

MICRO LOG

Company NEC OPERATING - KANSAS, LLC.

Well INDIA #1

Field RATTLESNAKE

County STAFFORD State KANSAS

Location: API #: 15-185-24126-0000

1100' FSL & 1100' FEL
NW - NW - SE - SE

SEC 3 TWP 24S RGE 14W

Permanent Datum GROUND LEVEL Elevation 1951

Log Measured From KELLY BUSHING 8' A.G.L.
Drilling Measured From KELLY BUSHING

Other Services
CDL/CNL/PE
DIL

Elevation

K.B. 1959
D.F. 1957
G.L. 1951

Date	1/4/23
Run Number	TWO
Depth Driller	4260
Depth Logger	4252
Bottom Logged Interval	4236
Top Log Interval	3000
Casing Driller	8 5/8"@223'
Casing Logger	223
Bit Size	7 7/8"
Type Fluid in Hole	CHEMICAL MUD
Density / Viscosity	9.3/46
pH / Fluid Loss	10.0/9.2
Source of Sample	FLOWLINE
Rm @ Meas. Temp	1.00@66F
Rmf @ Meas. Temp	.750@66F
Rmc @ Meas. Temp	1.20@66F
Source of Rmf / Rmc	MEASURED
Rm @ BHT	.559@118F
Time Circulation Stopped	4:5 HOURS
Time Logger on Bottom	8:30 P.M.
Maximum Recorded Temperature	118F
Equipment Number	8916
Location	HAYS, KANSAS
Recorded By	JEFF LUEBBERS
Witnessed By	PAT DEENIHAN

<<< Fold Here >>>

All interpretations are opinions based on inferences from electrical or other measurements and we cannot and do not guarantee the accuracy or correctness of any interpretation, and we shall not, except in the case of gross or willful negligence on our part, be liable or responsible for any loss, costs, damages, or expenses incurred or sustained by anyone resulting from any interpretation made by any of our officers, agents or employees. These interpretations are also subject to our general terms and conditions set out in our current Price Schedule.

Comments

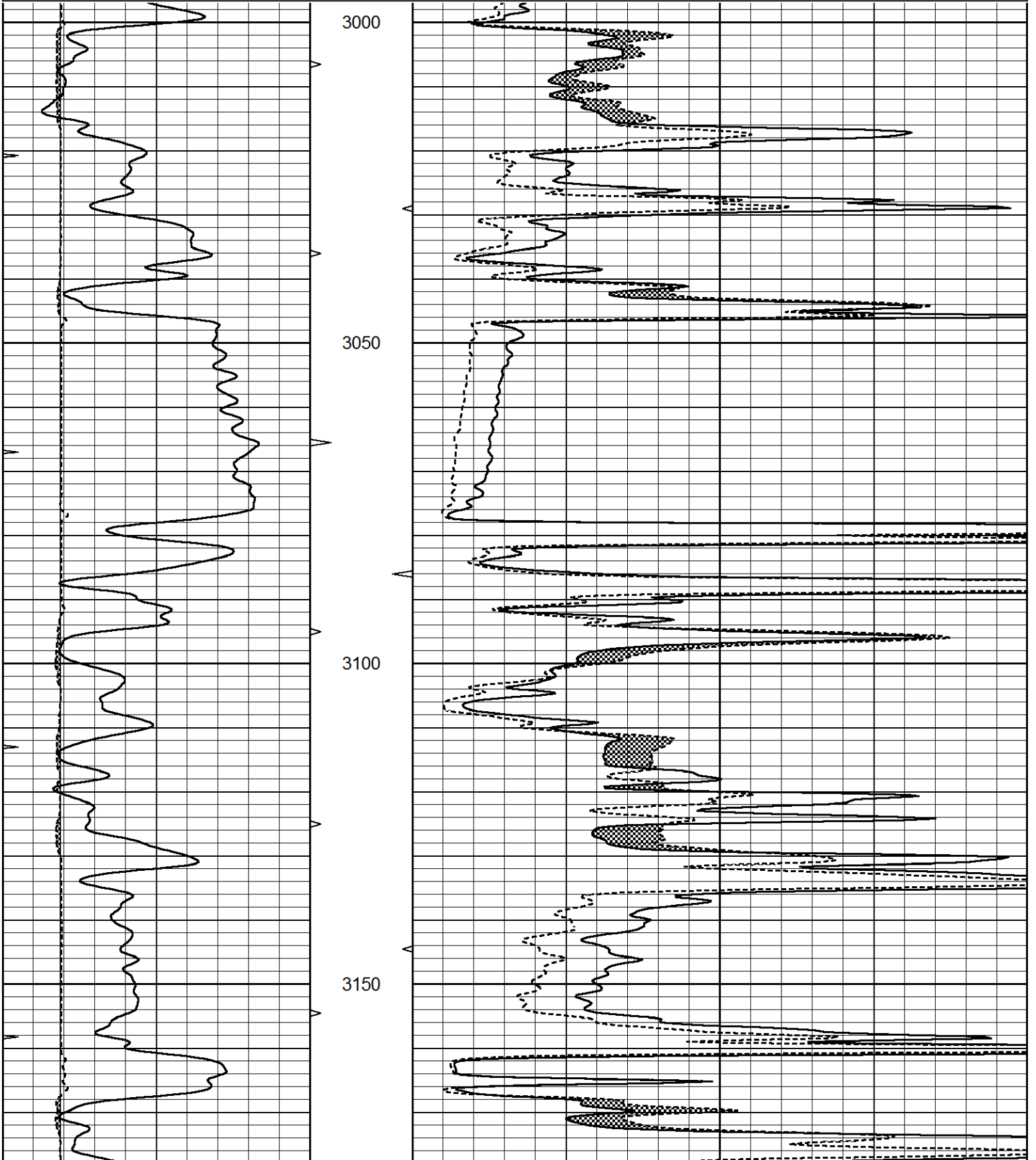
THANK YOU FOR USING ELI WIRELINE, HAYS, KS. (785) 628-6395
DIRECTIONS:
MACKSVILLE, KS., 5 E. ON HWY 50 TO "RD. 60", 2N., 1/2E., N. INTO

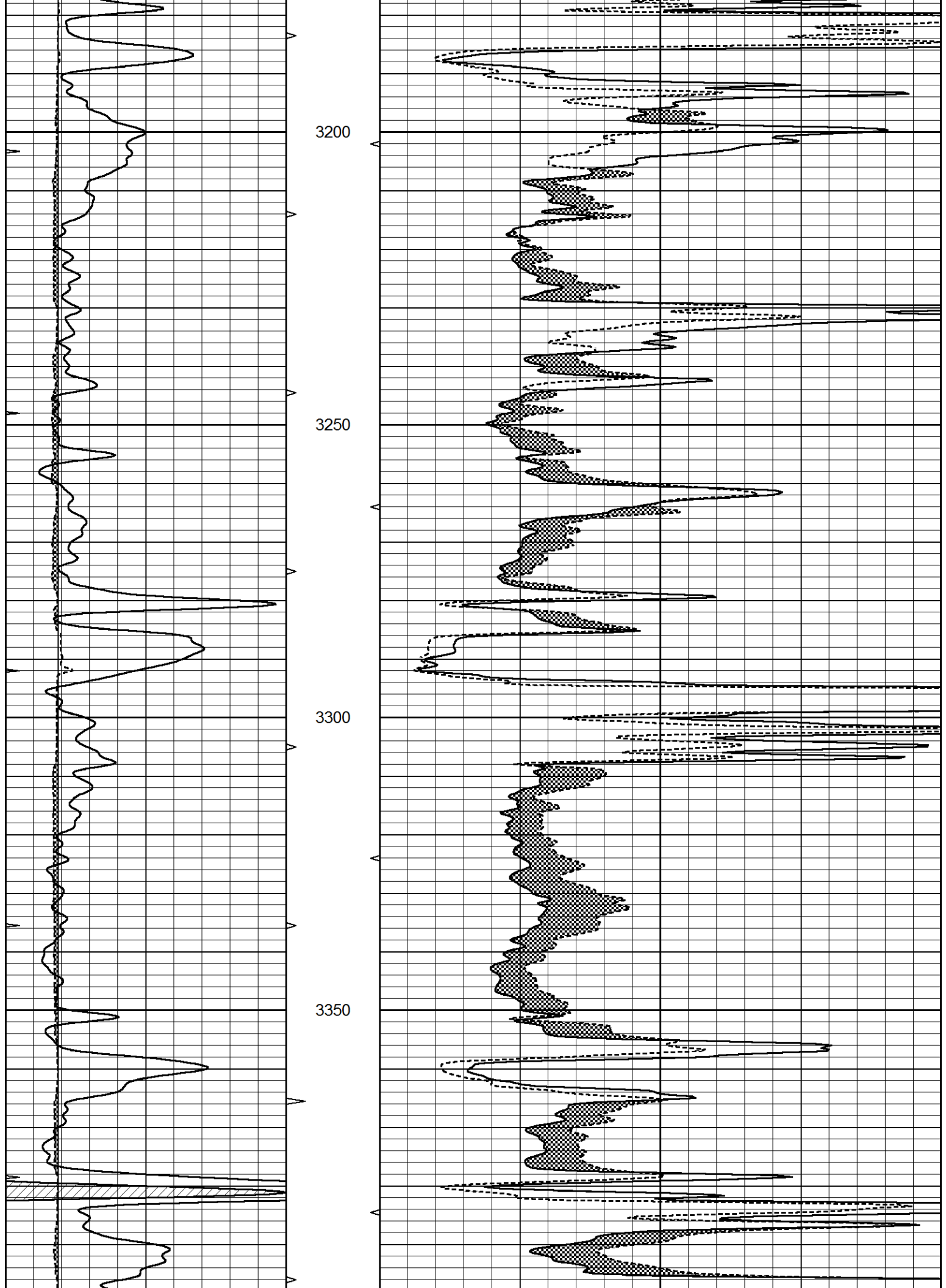


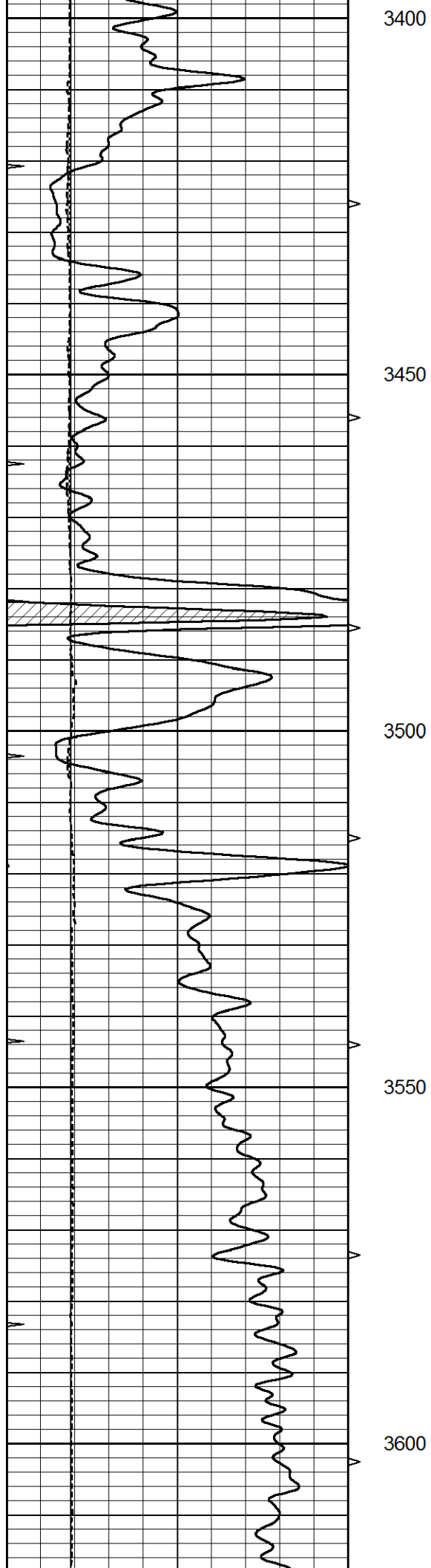
MAIN SECTION

Database File 7430pe.db
 Dataset Pathname pass9.3
 Presentation Format _micro
 Dataset Creation Wed Jan 04 21:24:31 2023
 Charted by Depth in Feet scaled 1:240

0	GAMMA RAY (GAPI)	150	ABHV	0	MEL1.5 (Ohm-m)	40
6	CALIPER (in)	16	10 (ft3)	0	MEL2.0 (Ohm-m)	40
0	MINMK	20	TBHV			
			0 (ft3)	10		







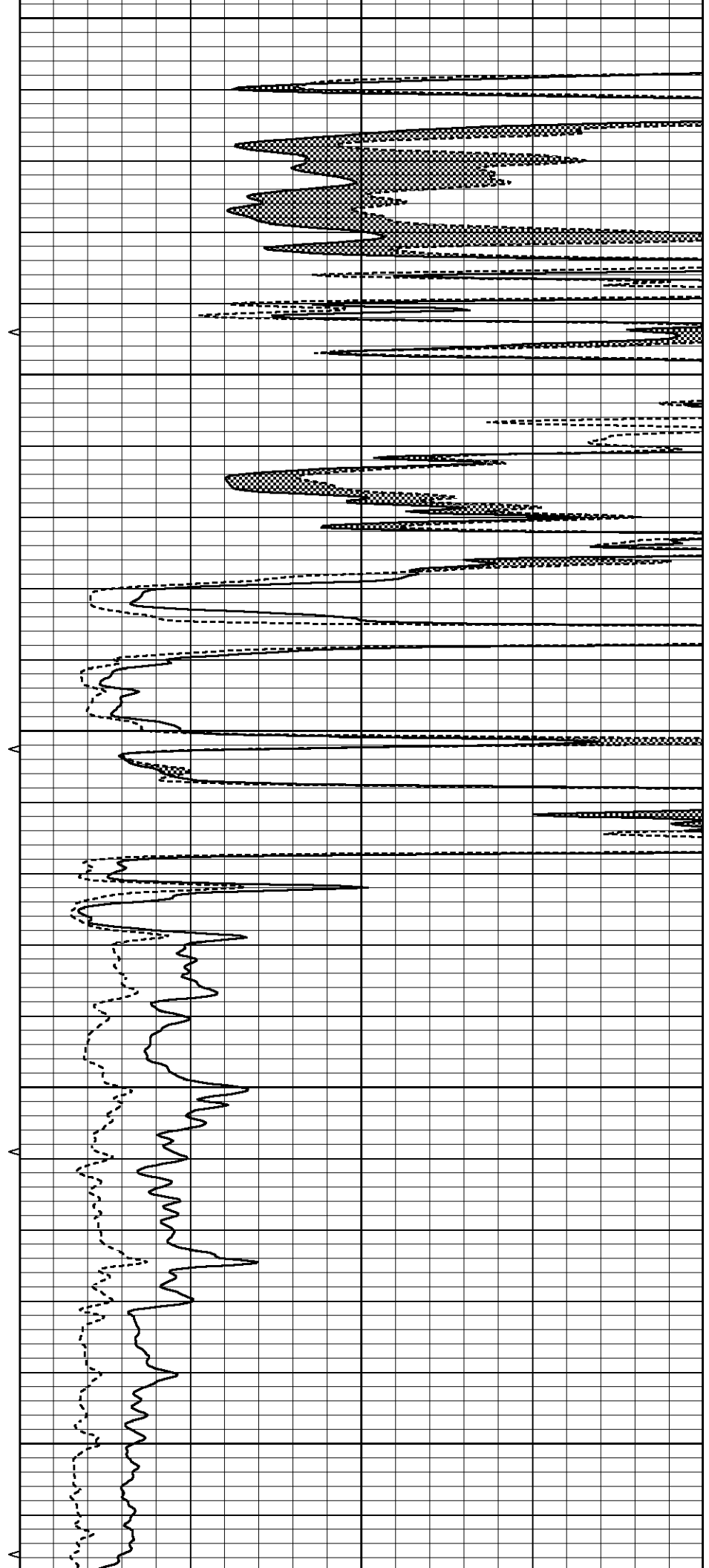
3400

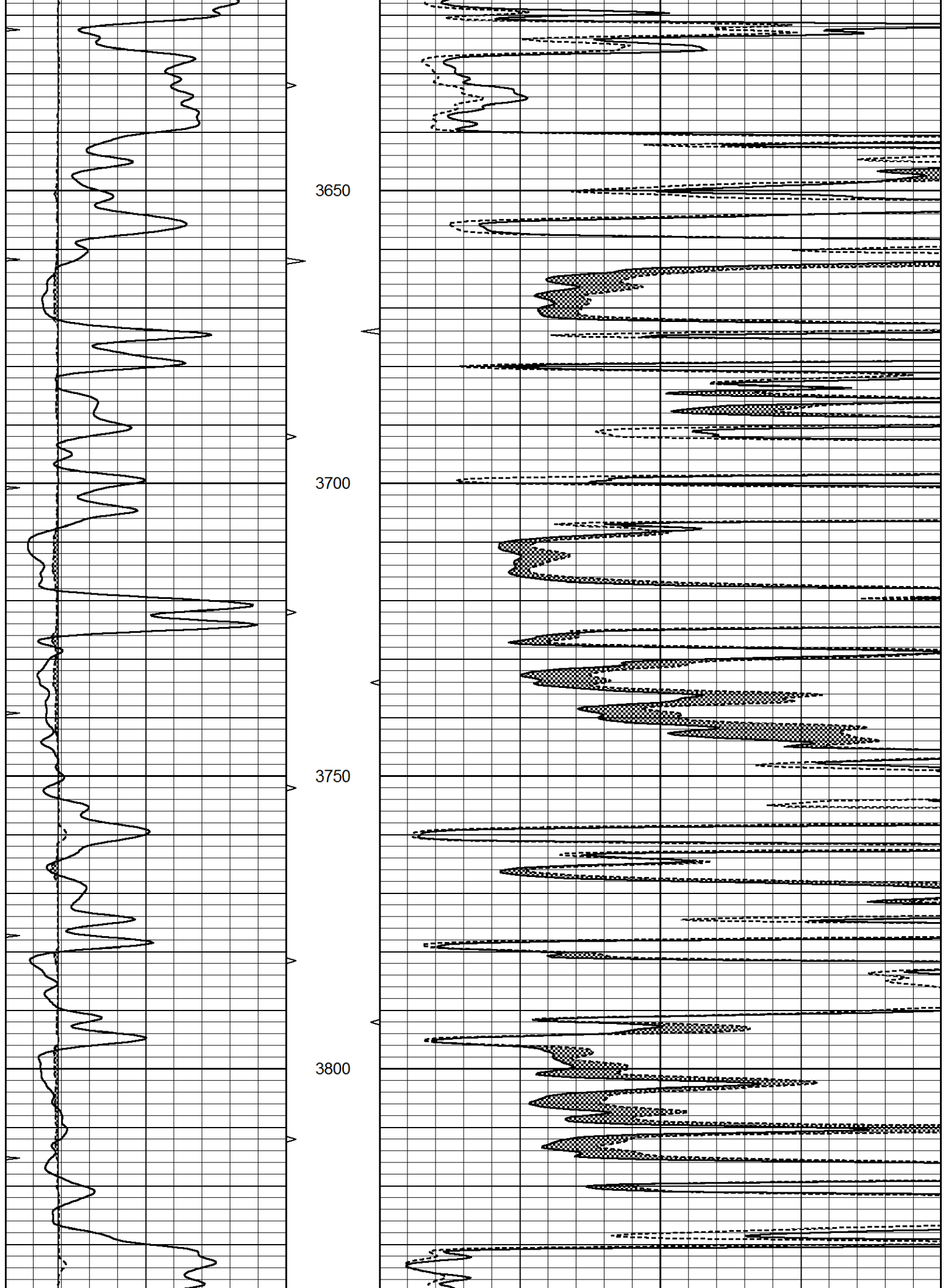
3450

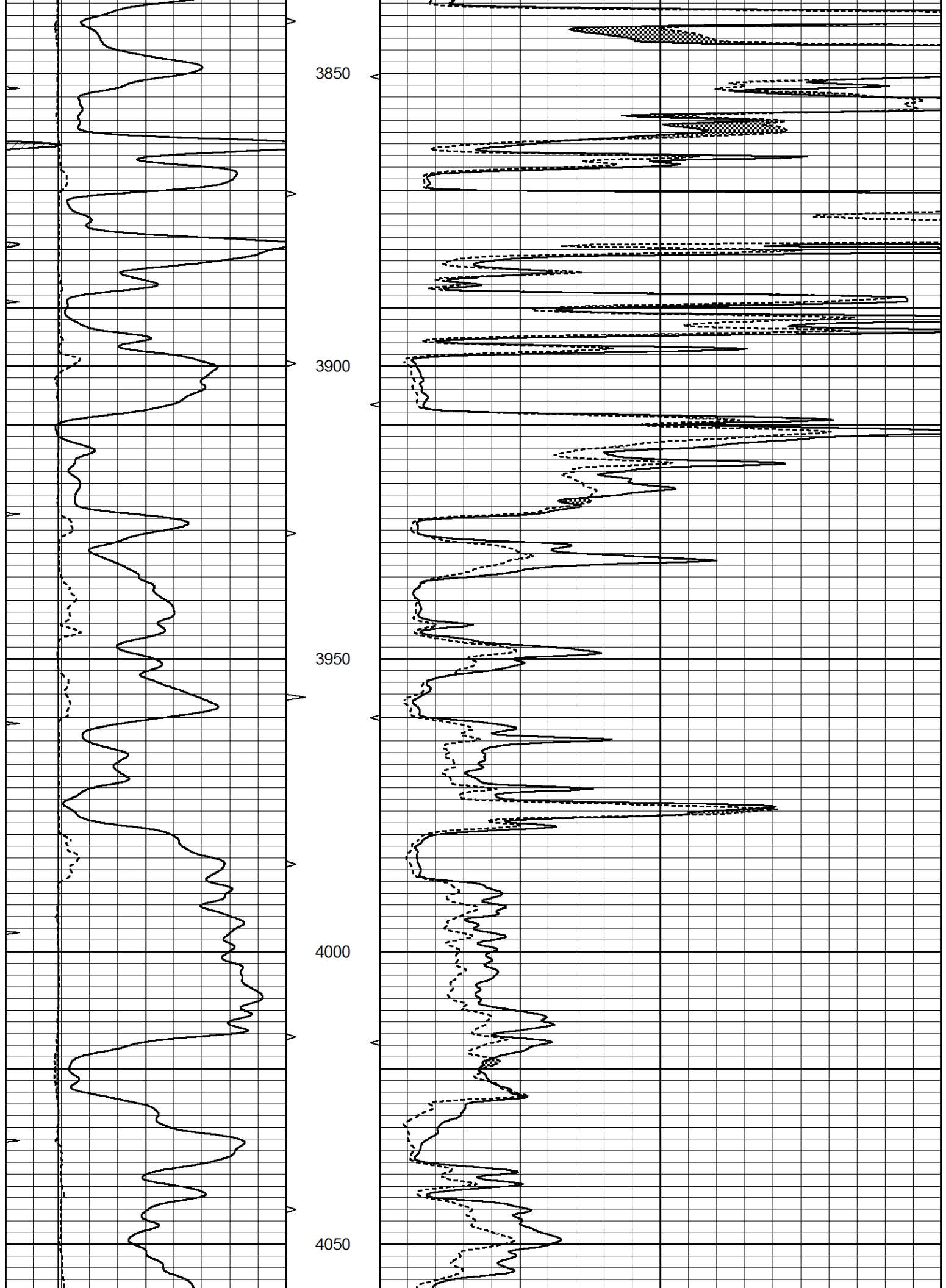
3500

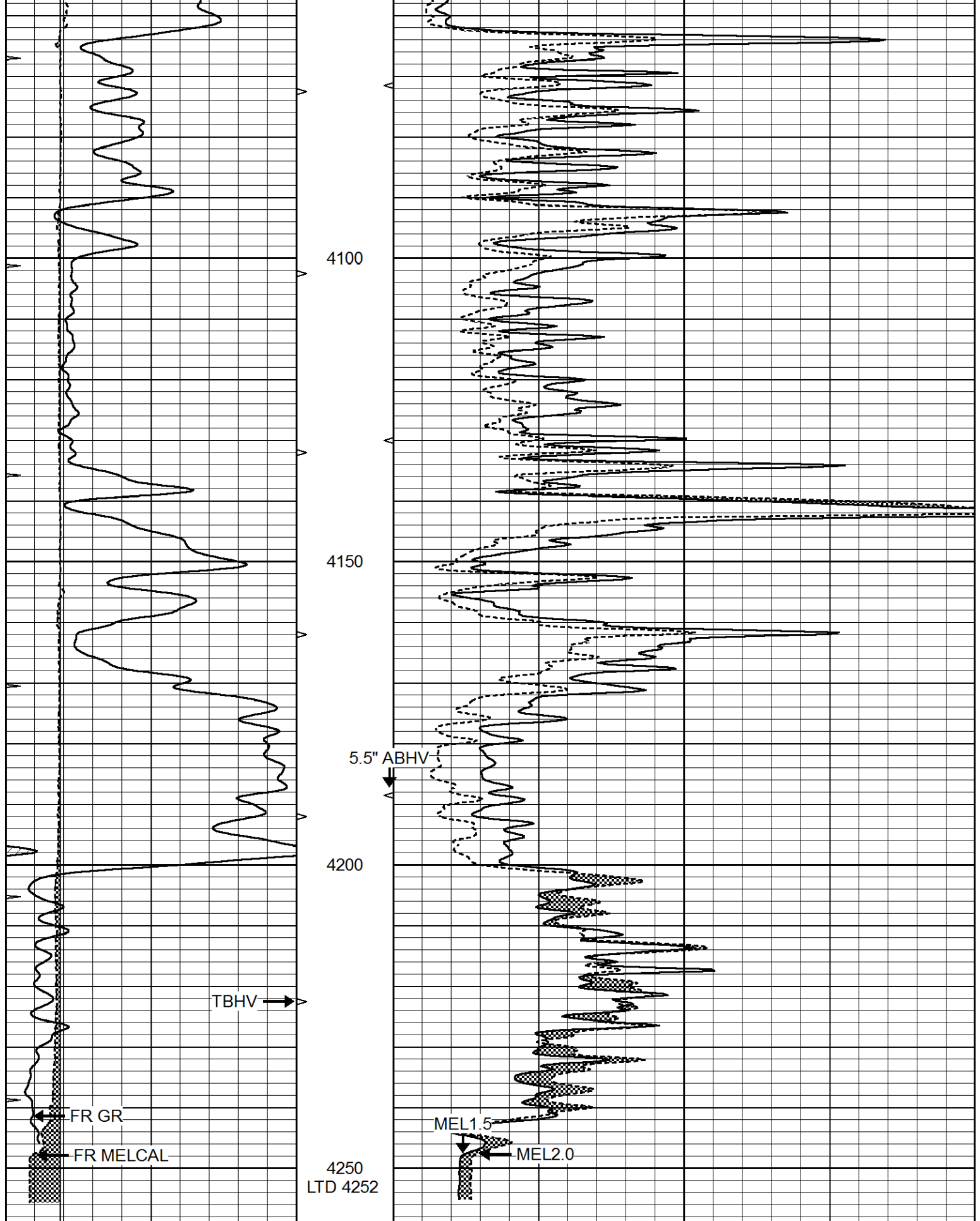
3550

3600









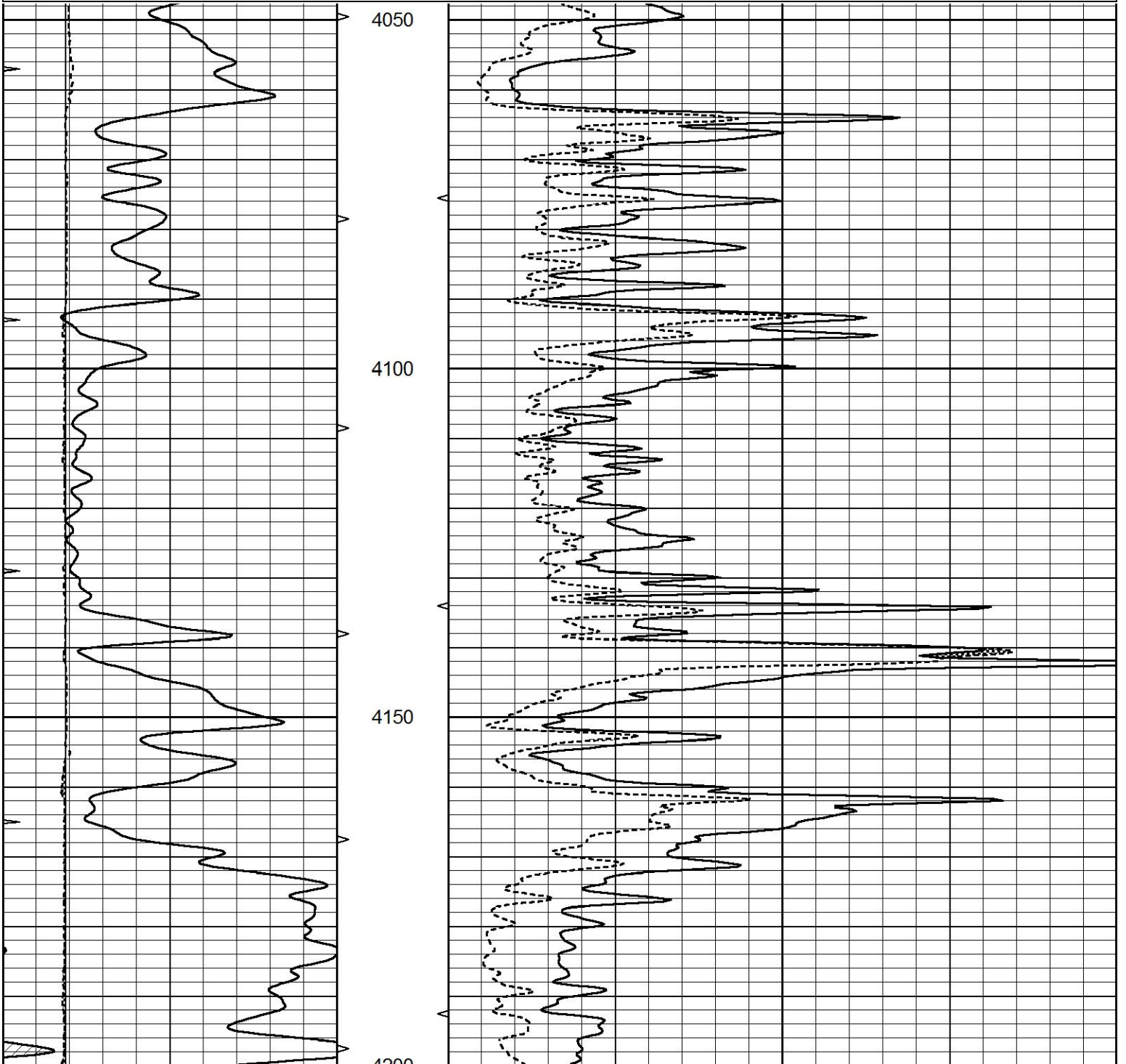
0	GAMMA RAY (GAPI)	150	ABHV	0	MEL1.5 (Ohm-m)	40
6	CALIPER (in)	16	10 (ft3)	0 0	MEL2.0 (Ohm-m)	40
0	MINMK	20	TBHV			
			0 (ft3)	10		

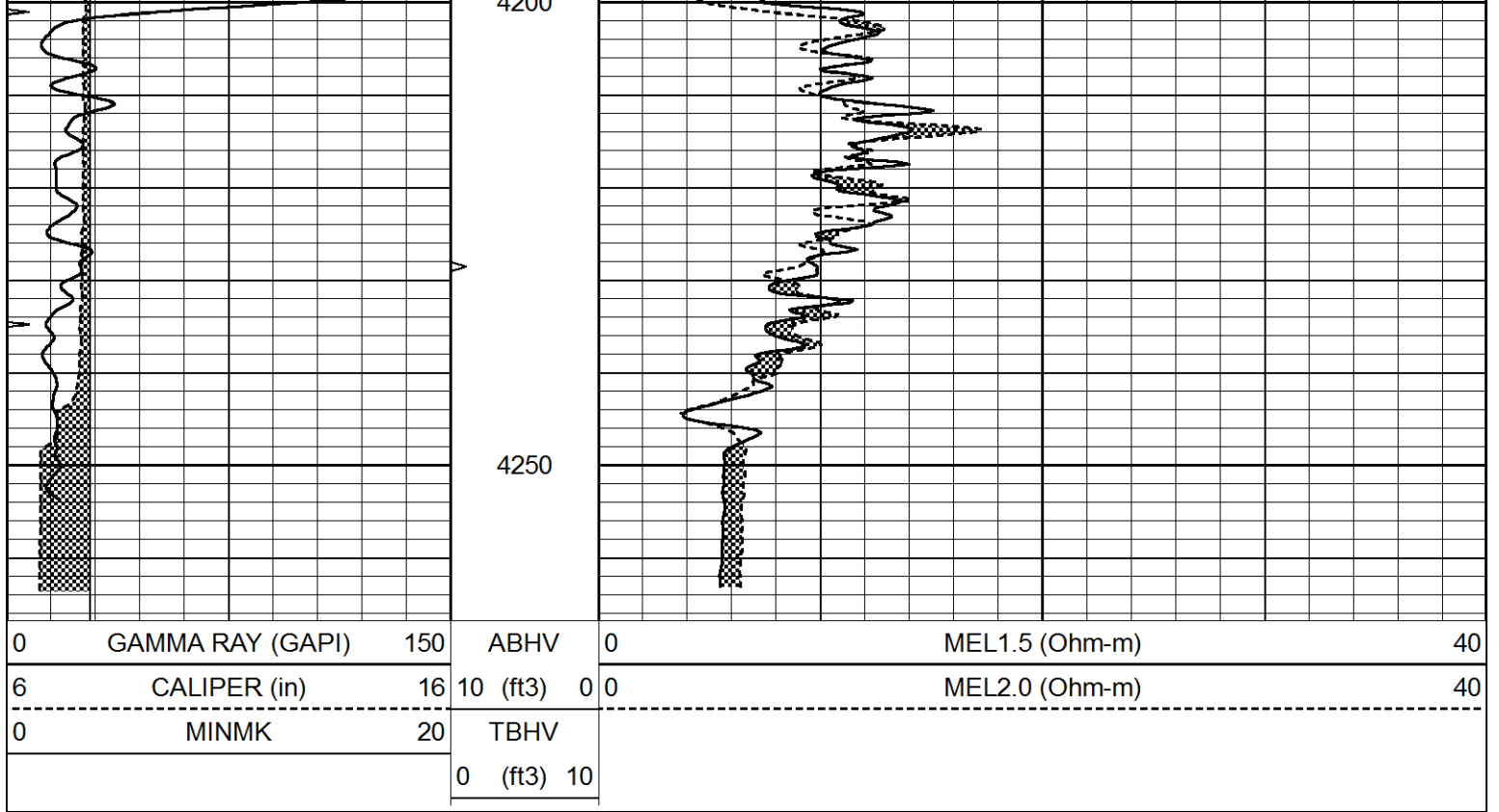


REPEAT SECTION

Database File 7430pe.db
 Dataset Pathname pass8.1
 Presentation Format _micro
 Dataset Creation Wed Jan 04 21:14:37 2023
 Charted by Depth in Feet scaled 1:240

0	GAMMA RAY (GAPI)	150	ABHV	0	MEL1.5 (Ohm-m)	40
6	CALIPER (in)	16	10 (ft3)	0	MEL2.0 (Ohm-m)	40
0	MINMK	20	TBHV			
			0 (ft3)	10		





Calibration Report

Database File 7430pe.db
 Dataset Pathname pass9.3
 Dataset Creation Wed Jan 04 21:24:31 2023

MICRO Calibration Report

Serial Number:	MICRO5	
Tool Model:	PROBE	
Performed:	Wed Jan 04 21:06:01 2023	
Caliper Calibration:	Gain=1.772	Offset=-0.949
References	Low Cal 8.000	High Cal 15.000
Readings	5.050	9.000
1.5" Calibration:	Gain=42.000	Offset=-0.500
References	Low Cal 0.000	High Cal 20.000
Readings	0.015	1.007
2" Calibration:	Gain=60.000	Offset=-1.000
References	Low Cal 0.000	High Cal 20.000
Readings	0.008	0.908

Gamma Ray Calibration Report

Serial Number:	GR5	
Tool Model:	OPEN	
Performed:	Mon Jan 02 04:02:59 2023	
Calibrator Value:	1.0	GAPI
Background Reading:	0.0	cps
Calibrator Reading:	1.0	cps

Sensitivity:

0.6000

GAPI/cps