



# TRIPLE COMBO LOG

Company NEC OPERATING - KANSAS, LLC.

Well INDIA #1

Field RATTLESNAKE

County STAFFORD State KANSAS

Location: API #: 15-185-24126-0000

1100' FSL & 1100' FEL  
NW - NW - SE - SE

Other Services  
CDL/CNL/PE  
DIL/MEI

SEC 3 TWP 24S RGE 14W

Elevation

Company NEC OPERATING - KANSAS, LLC.  
Well INDIA #1  
Field RATTLESNAKE  
County STAFFORD  
State KANSAS

Permanent Datum GROUND LEVEL Elevation 1951  
Log Measured From KELLY BUSHING 8' A.G.L.  
Drilling Measured From KELLY BUSHING

K.B. 1959  
D.F. 1957  
G.L. 1951

Date	1/4/23
Run Number	ONE
Depth Driller	4260
Depth Logger	4252
Bottom Logged Interval	4250
Top Log Interval	3000
Casing Driller	8 5/8"@223'
Casing Logger	223
Bit Size	7 7/8"
Type Fluid in Hole	CHEMICAL MUD
Density / Viscosity	9.3/46
pH / Fluid Loss	10.0/9.2
Source of Sample	FLOWLINE
Rm @ Meas. Temp	1.00@66F
Rmf @ Meas. Temp	.750@66F
Rmc @ Meas. Temp	1.20@66F
Source of Rmf / Rmc	MEASURED
Rm @ BHT	.559@118F
Time Circulation Stopped	3 HOURS
Time Logger on Bottom	6:30 P.M.
Maximum Recorded Temperature	118F
Equipment Number	8916
Location	HAYS, KANSAS
Recorded By	JEFF LUEBBERS
Witnessed By	PAT DEENIHAN

<<< Fold Here >>>

All interpretations are opinions based on inferences from electrical or other measurements and we cannot and do not guarantee the accuracy or correctness of any interpretation, and we shall not, except in the case of gross or willful negligence on our part, be liable or responsible for any loss, costs, damages, or expenses incurred or sustained by anyone resulting from any interpretation made by any of our officers, agents or employees. These interpretations are also subject to our general terms and conditions set out in our current Price Schedule.

### Comments

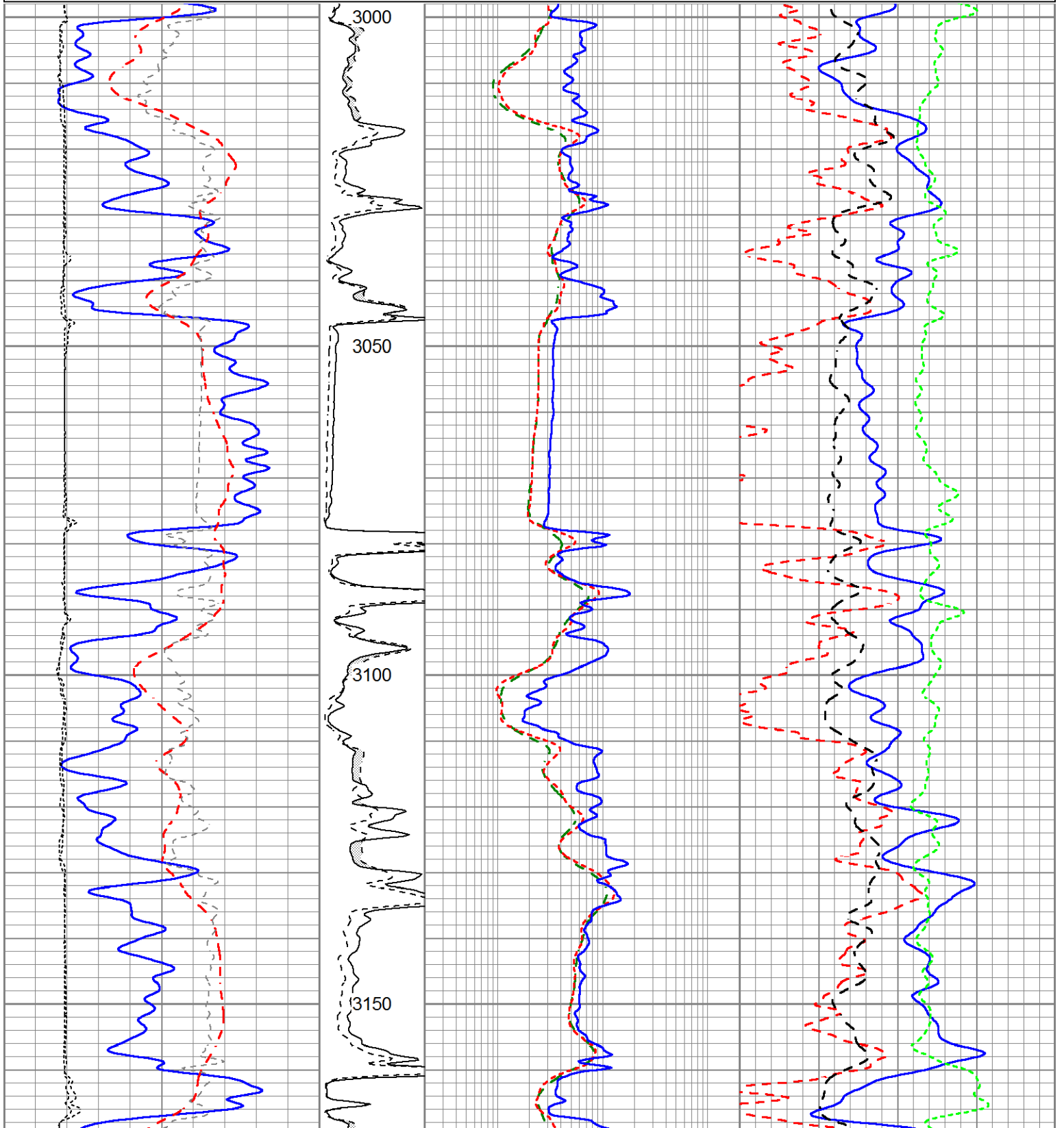
THANK YOU FOR USING ELI WIRELINE, HAYS, KS. (785) 628-6395  
DIRECTIONS:  
MACKSVILLE, KS., 5 E. ON HWY 50 TO "RD. 60", 2N., 1/2E., N. INTO

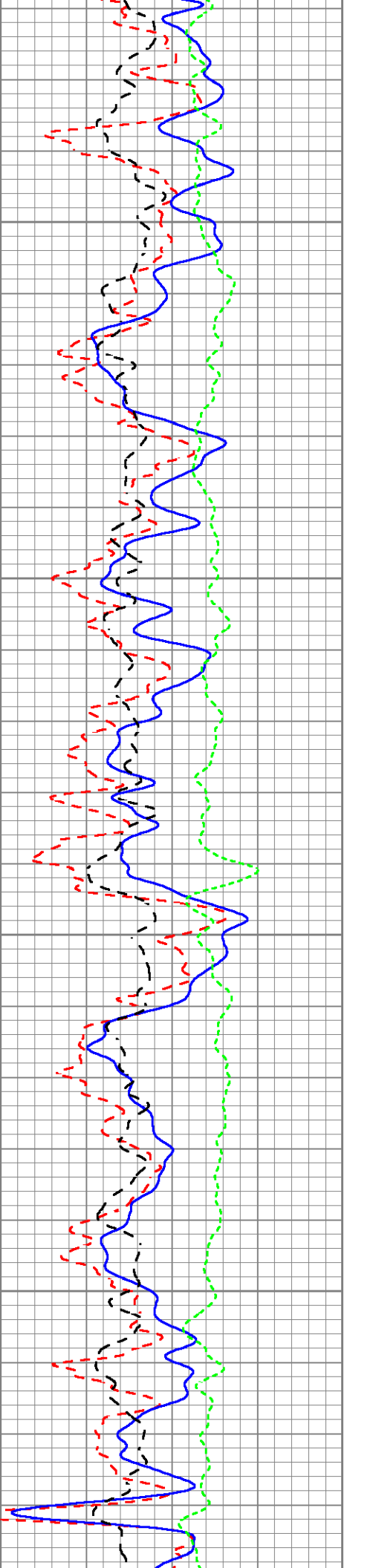
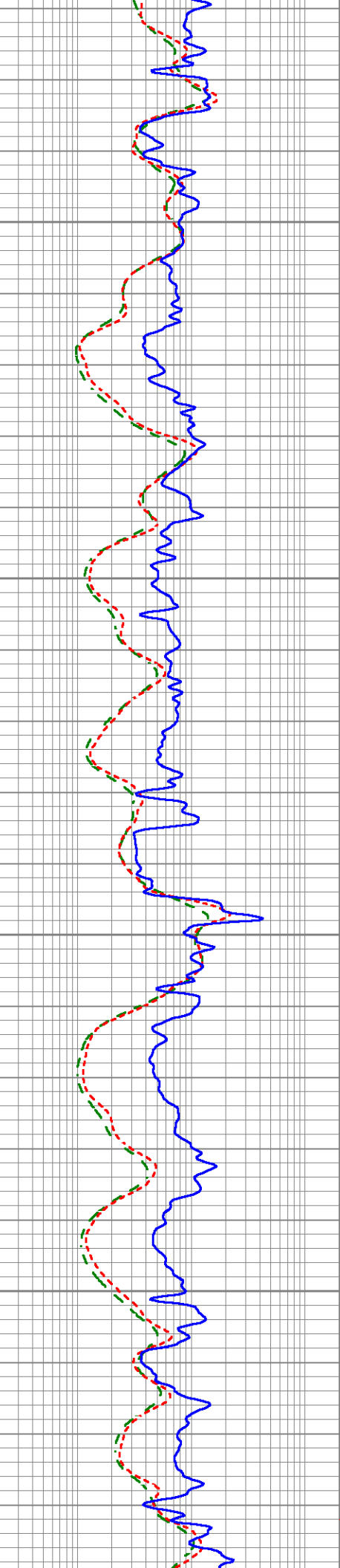
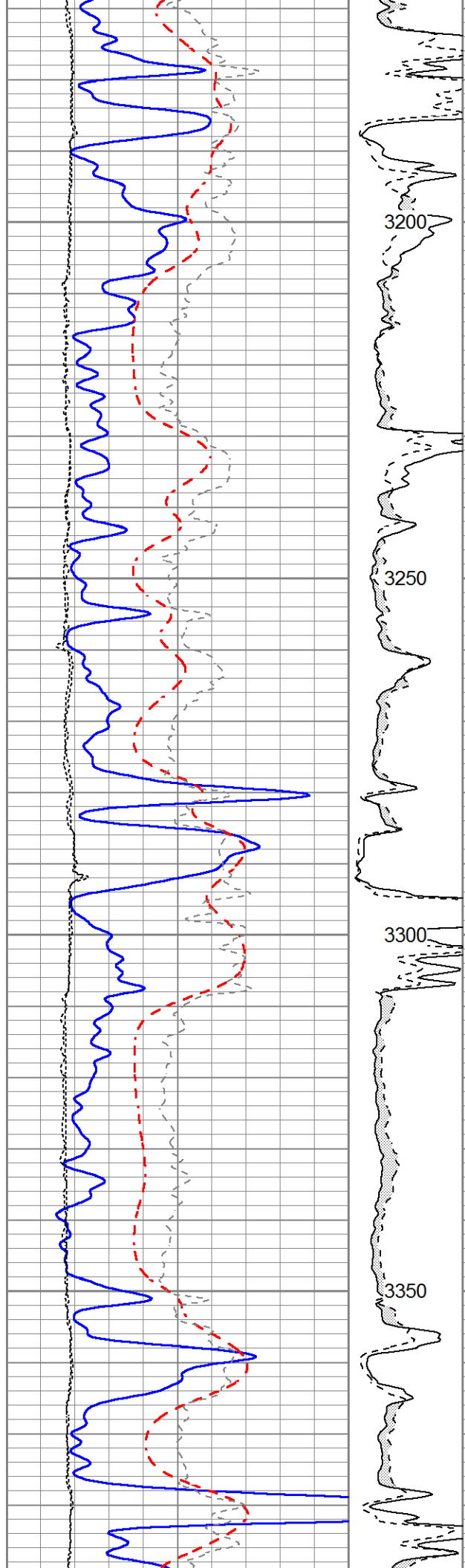


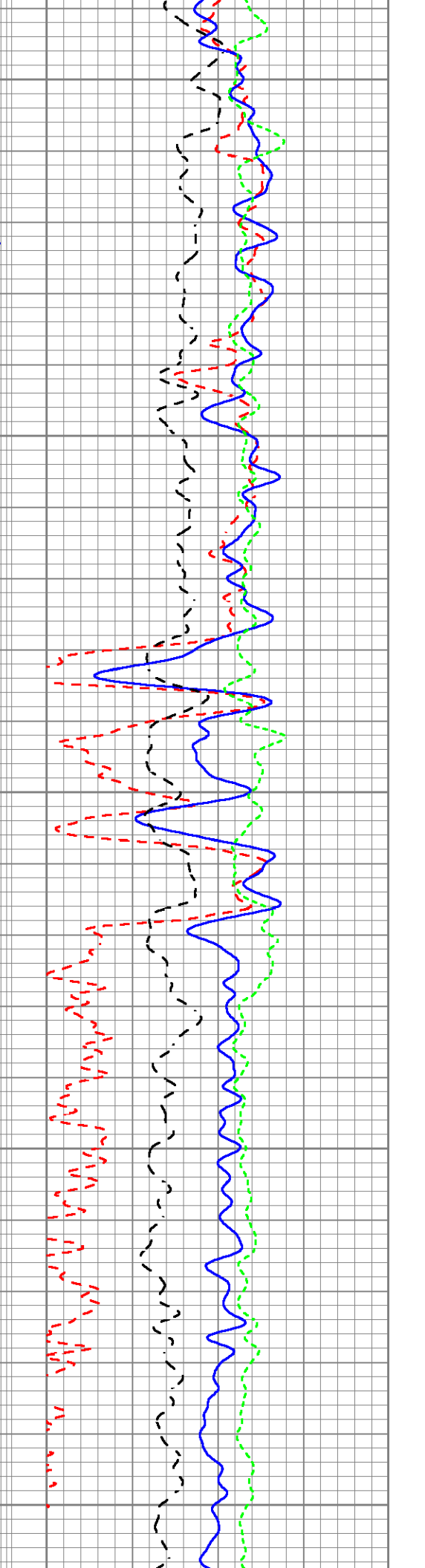
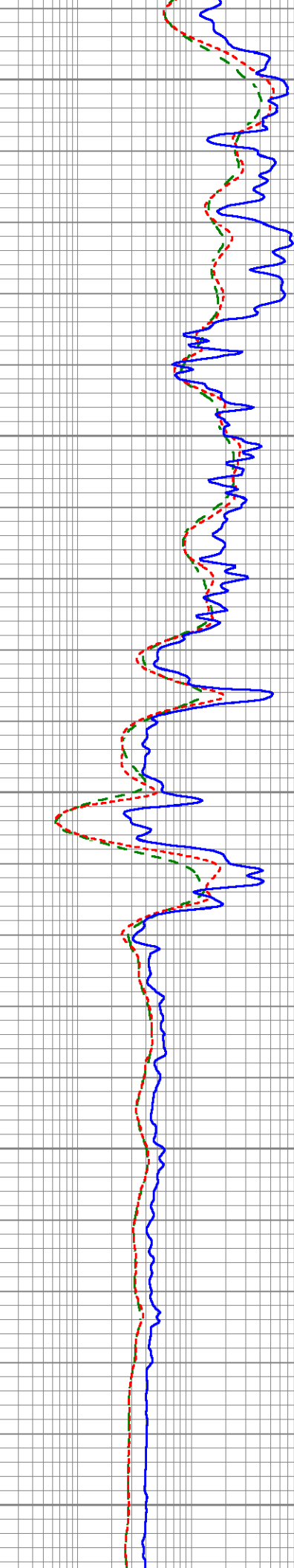
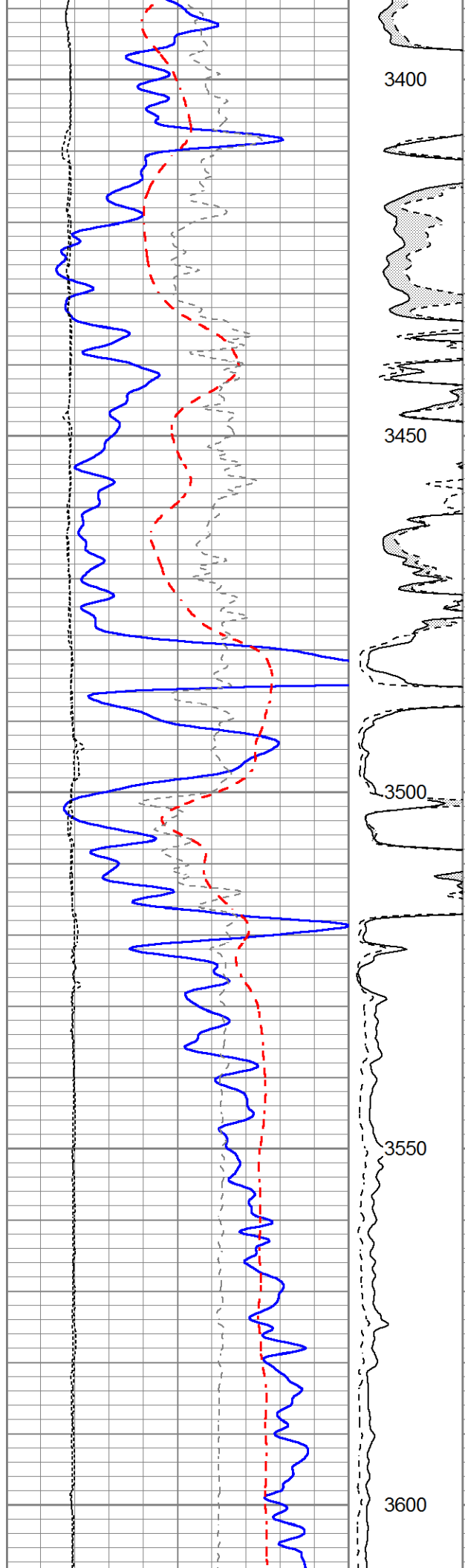
# MAIN SECTION

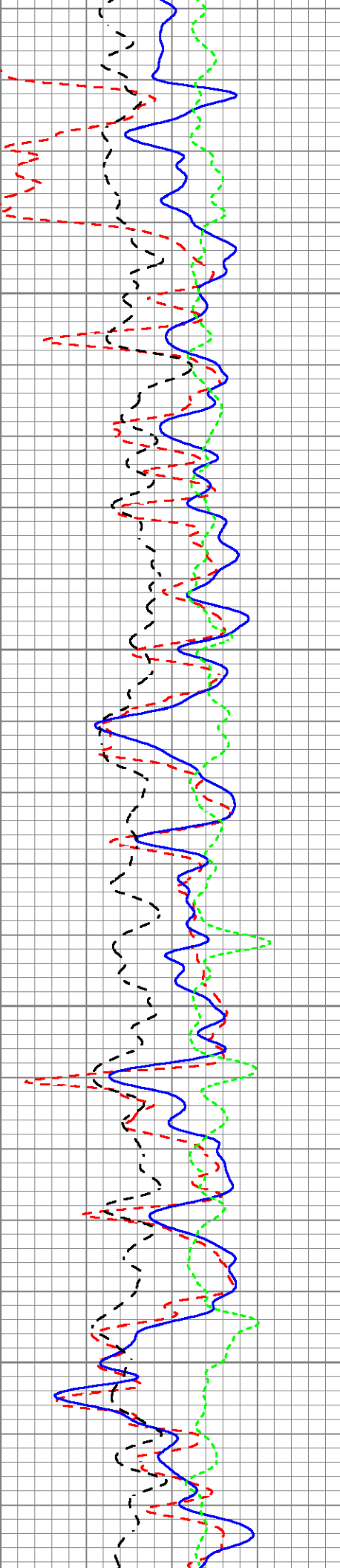
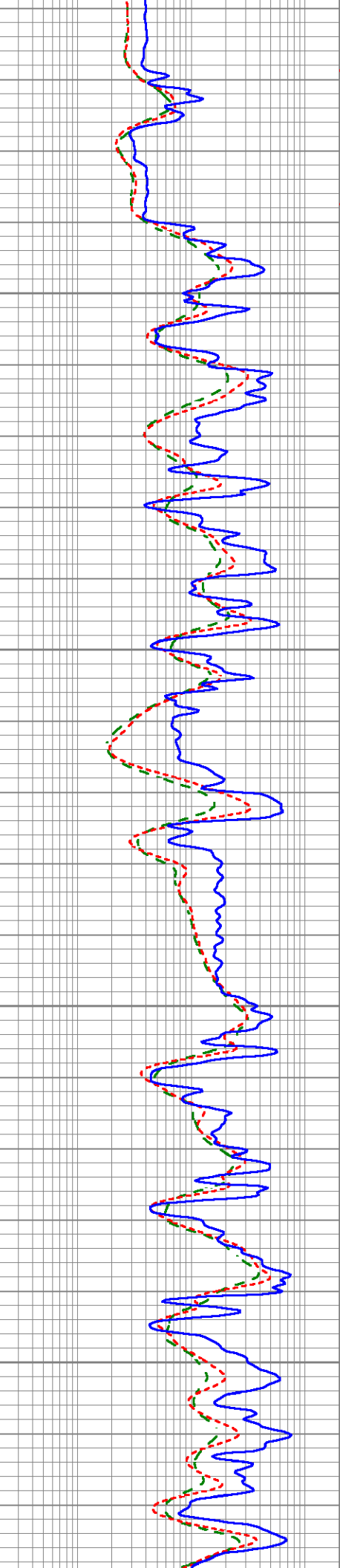
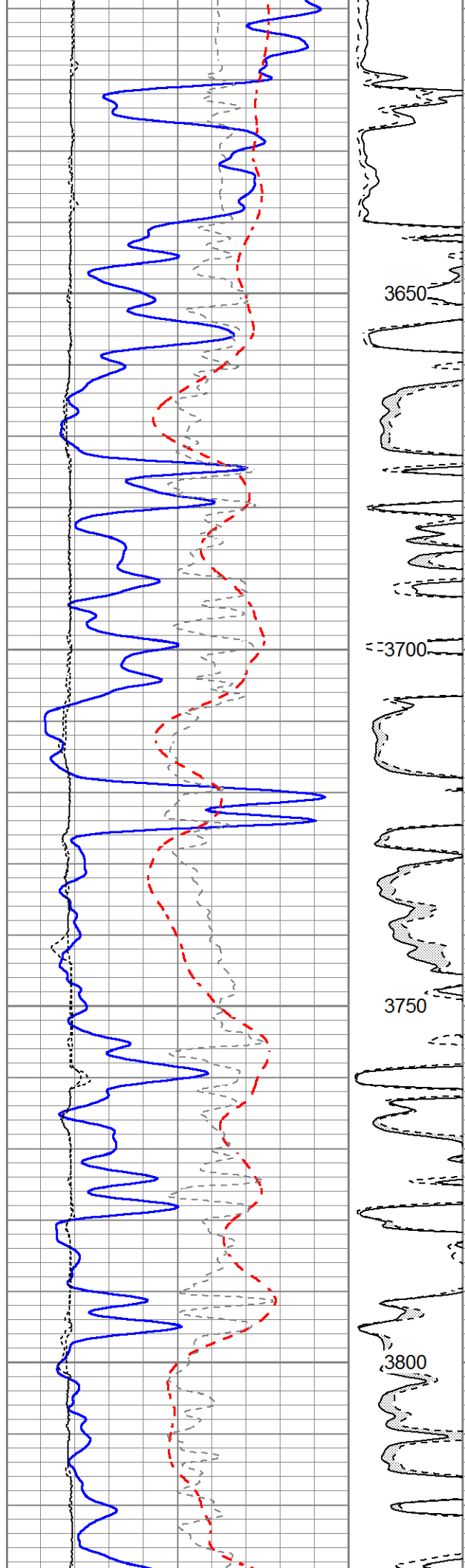
Database File 7430pe.db  
 Dataset Pathname pass6.1L  
 Presentation Format obrcompcol  
 Dataset Creation Wed Jan 04 21:33:43 2023  
 Charted by Depth in Feet scaled 1:240

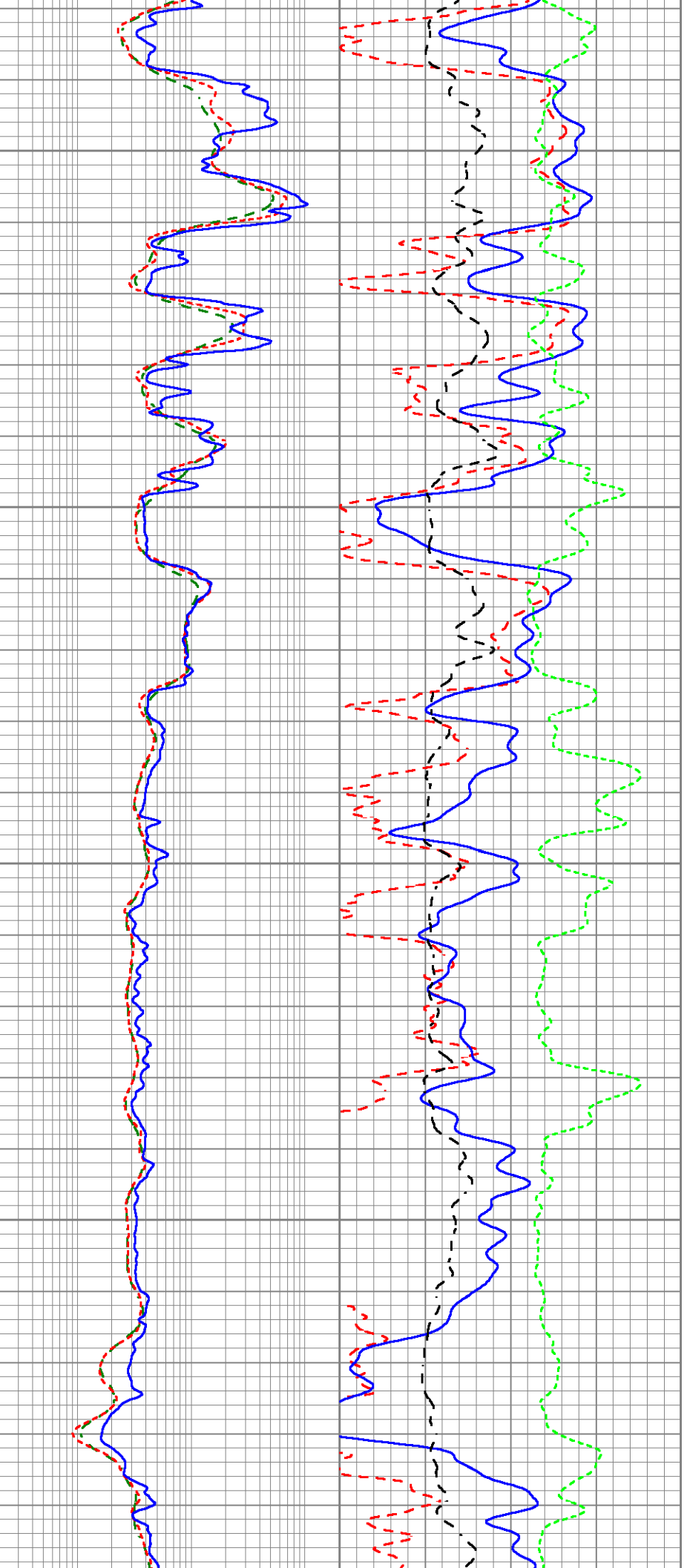
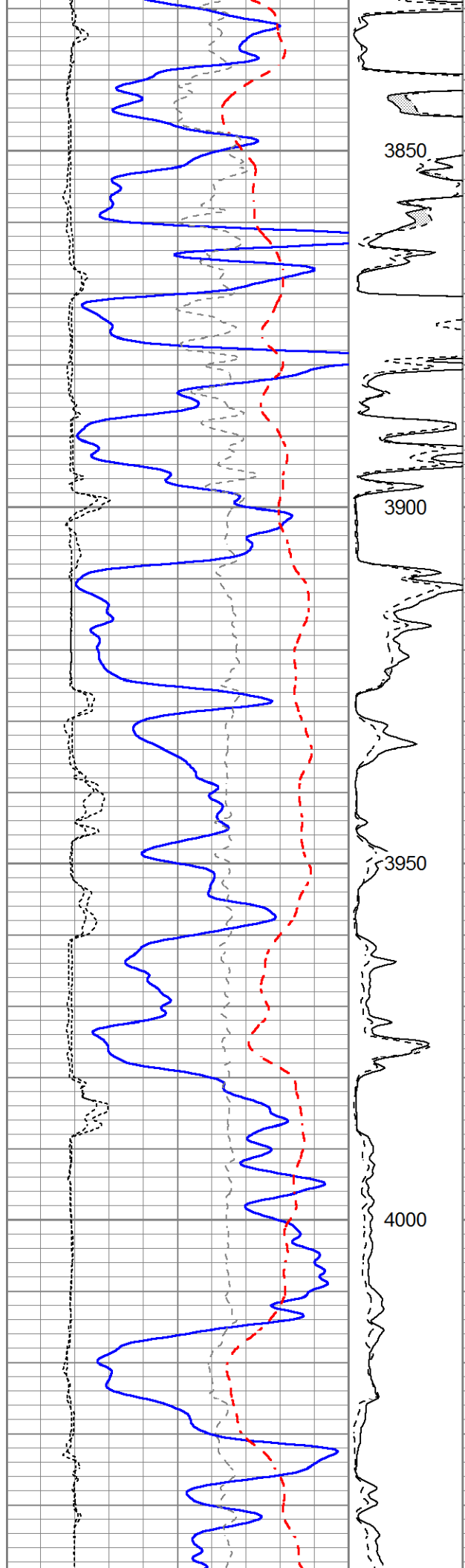
0	Gamma Ray (GAPI)	150	MEL15	0.2	Deep Resistivity (Ohm-m)	200	30	CN Porosity (pu)	-10	
-100	SP (mV)	100	(Ohm-m)	0.2	Medium Resistivity (Ohm-m)	200	30	Density Porosity (pu)	-10	
-200	RxoRt	100	0	40	0.2	Shallow Resistivity (Ohm-m)	200	0	PE	10
6	DCAL (in)	16	MEL20						RHOC	
6	MELCAL (in)	16	(Ohm-m)						-0.25 (g/cc)	0.25
			0	40						

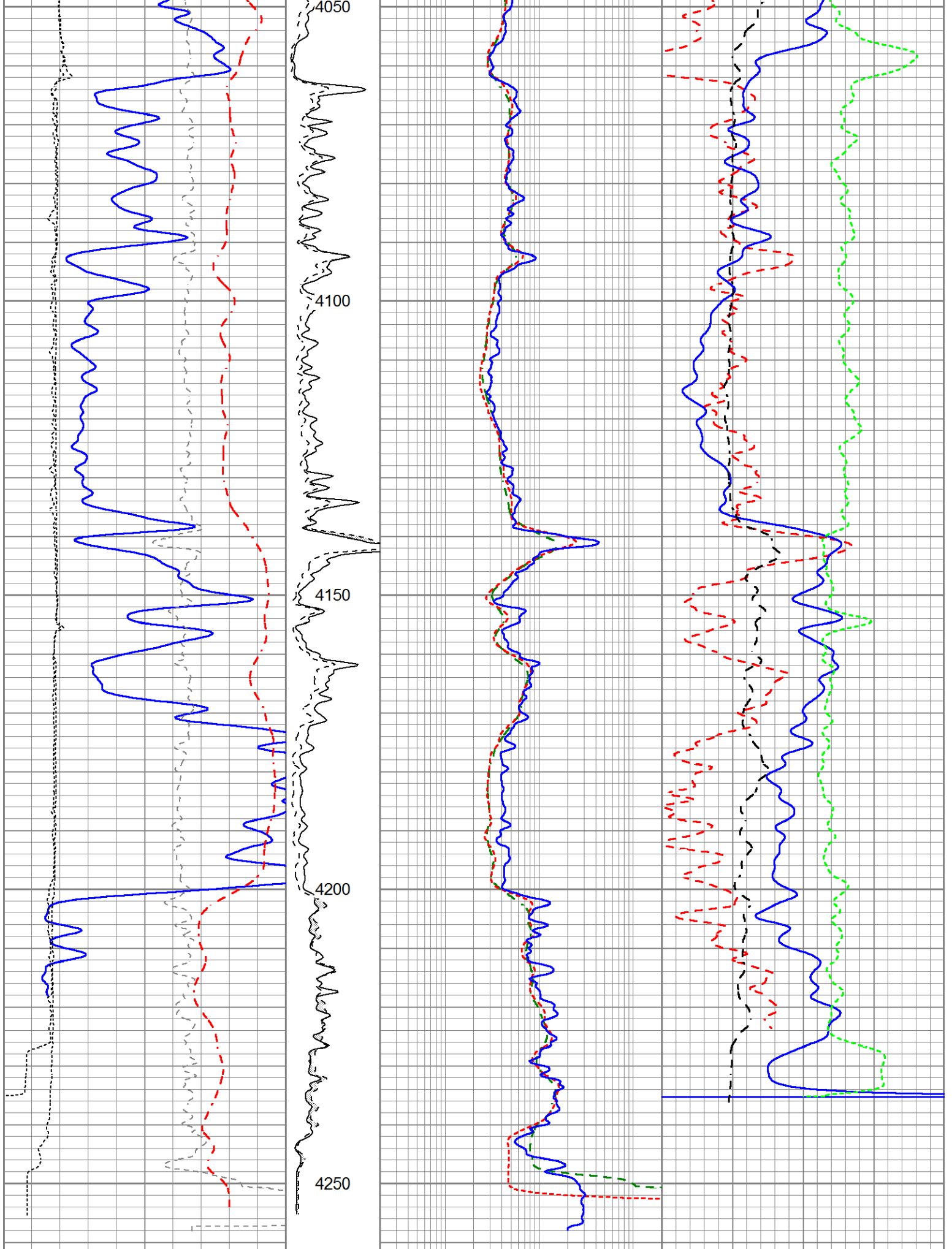












0	Gamma Ray (GAPI)	150	MEL15	0.2	Deep Resistivity (Ohm-m)	200	30	CN Porosity (pu)	-10
100	SP (mV)	100	(Ohm m)	0.2	Medium Resistivity (Ohm m)	200	30	Density Porosity (pu)	10

-100	SP (mV)	100	(Ohm-Fm)	0.2	Medium Resistivity (Ohm-Fm)	200	50	Density Porosity (pu)	-10
-200	RxoRt	100	0 40	0.2	Shallow Resistivity (Ohm-m)	200	0	PE	10
6	DCAL (in)	16	MEL20					RHOC	
6	MELCAL (in)	16	(Ohm-m)					-0.25 (g/cc)	0.25
			0 40						