



DUAL INDUCTION LOG

Company NEC OPERATING - KANSAS, LLC.

Well ELLIE #1

Field STRATTON

County TREGO State KANSAS

Company NEC OPERATING - KANSAS, LLC.
Well ELLIE #1
Field STRATTON
County TREGO
State KANSAS

Location: 2310' FSL & 1700' FWL
E/2 - NW - NE - SW
AP1 #: 15-195-23144-0000
SEC 18 TWP 11S RGE 21W
Permanent Datum GROUND LEVEL Elevation 2231
Log Measured From KELLY BUSHING 7' A.G.L.
Drilling Measured From KELLY BUSHING

Other Services
CDL/CNL/PE
MEL/SONIC
Elevation
K.B. 2238
D.F. 2236
G.L. 2231

Date	9/23/22
Run Number	ONE
Depth Driller	4100
Depth Logger	4163
Bottom Logged Interval	4161
Top Log Interval	00
Casing Driller	8 5/8"@254'
Casing Logger	264
Bit Size	7 7/8"
Type Fluid in Hole	CHEMICAL MUD
Density / Viscosity	9.3/58
pH / Fluid Loss	10.0/6.0
Source of Sample	FLOWLINE
Rm @ Meas. Temp	.850@76F
Rmf @ Meas. Temp	.638@76F
Rmc @ Meas. Temp	1.02@76F
Source of Rmf / Rmc	MEASUREMENT
Rm @ BHT	.552@117F
Time Circulation Stopped	2.5 HOURS
Time Logger on Bottom	6:00 P.M.
Maximum Recorded Temperature	117F
Equipment Number	922339
Location	HAYS, KANSAS
Recorded By	JEFF LUEBBERS
Witnessed By	SEAN DEENIHAN

<<< Fold Here >>>

All interpretations are opinions based on inferences from electrical or other measurements and we cannot and do not guarantee the accuracy or correctness of any interpretation, and we shall not, except in the case of gross or willful negligence on our part, be liable or responsible for any loss, costs, damages, or expenses incurred or sustained by anyone resulting from any interpretation made by any of our officers, agents or employees. These interpretations are also subject to our general terms and conditions set out in our current Price Schedule.

15-195-23144-0000

Comments

THANK YOU FOR USING ELI WIRELINE HAYS, KANSAS (785) 628-6395
DIRECTIONS
OGALLAH, KS. & I-70 EXIT, 7 1/2 N. TO "RD. D", 2E., ON EAST ACROSS FENCELINE, 1N. TO NEXT FENCELINE & E. INTO

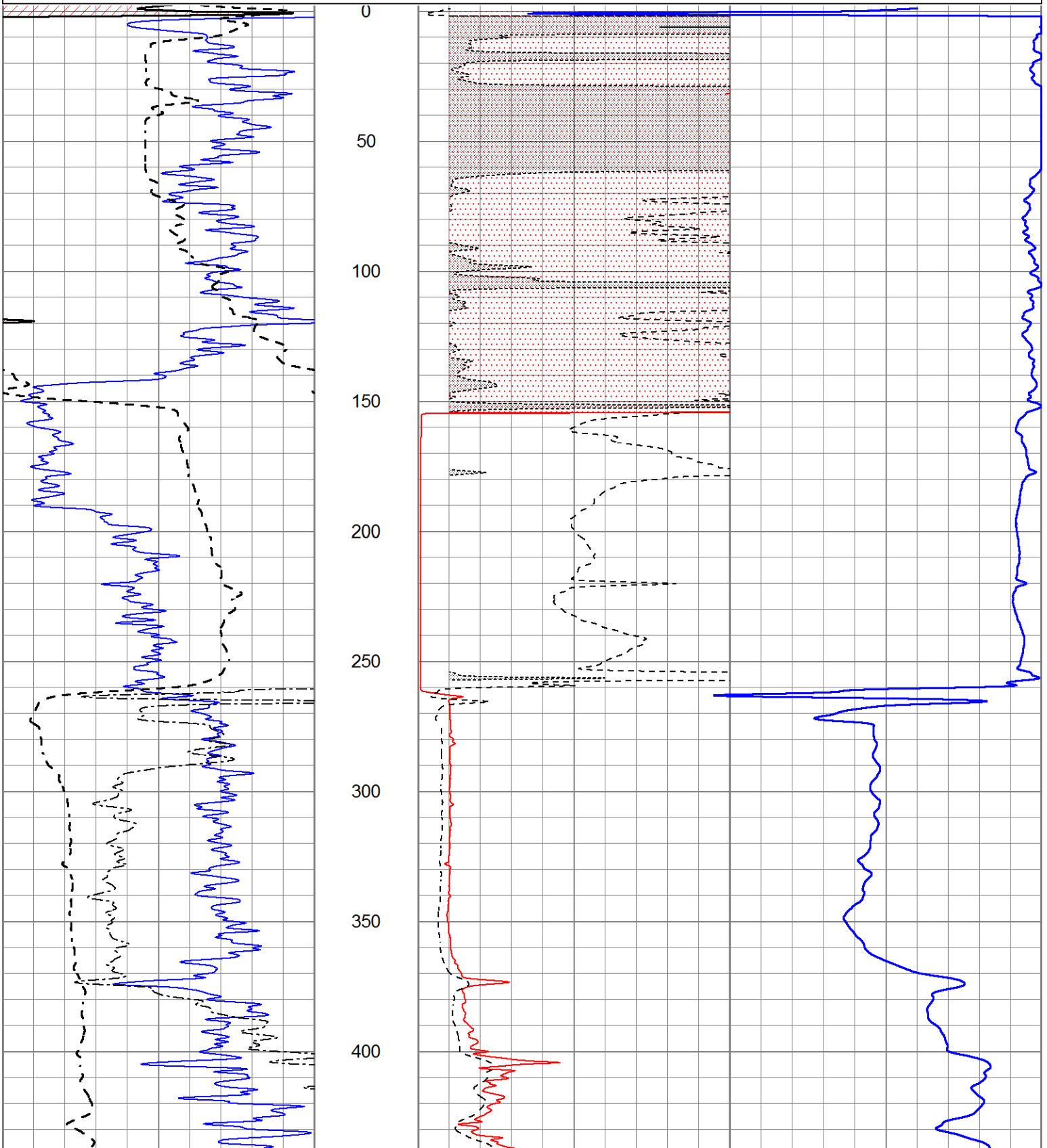


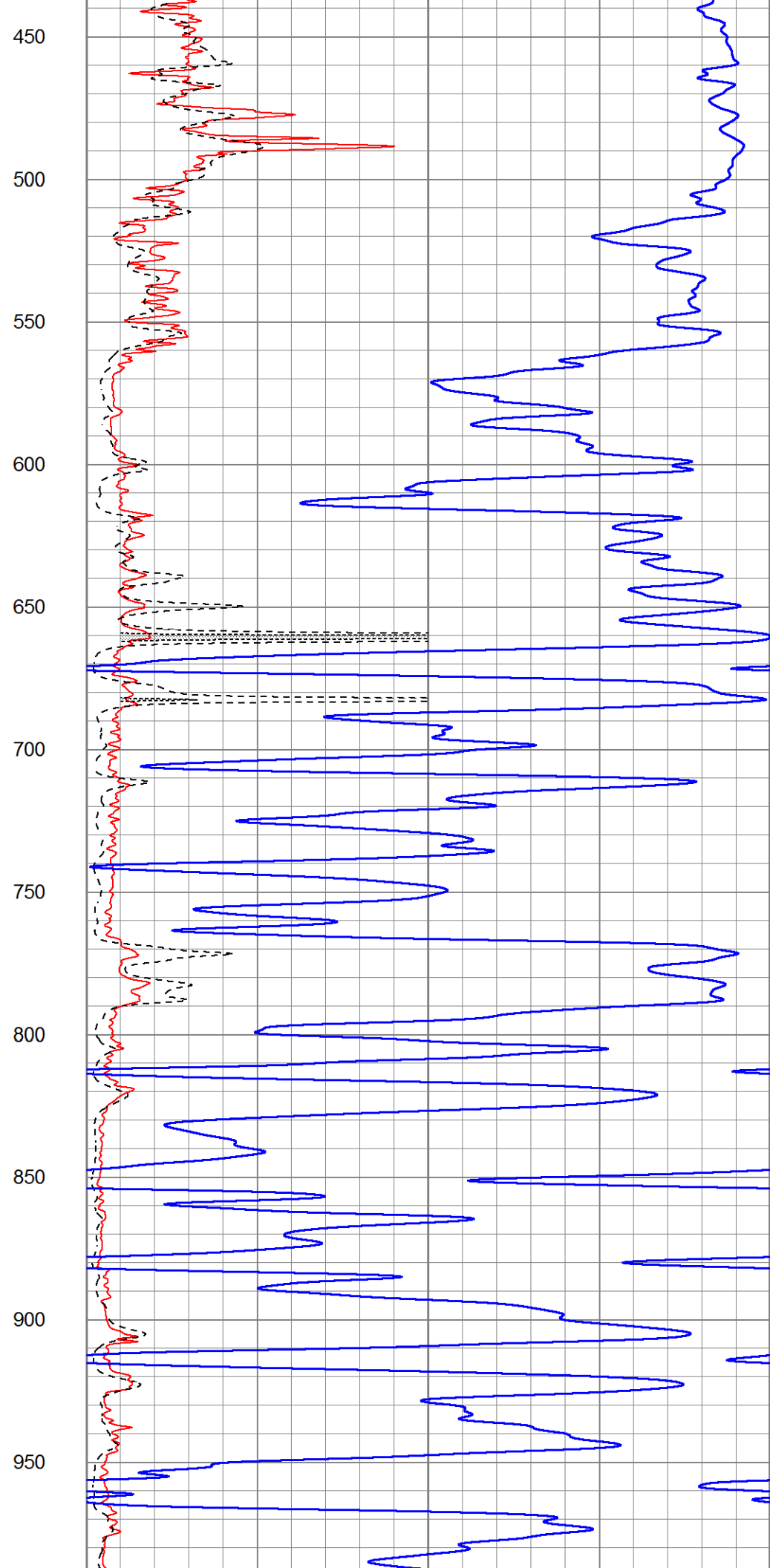
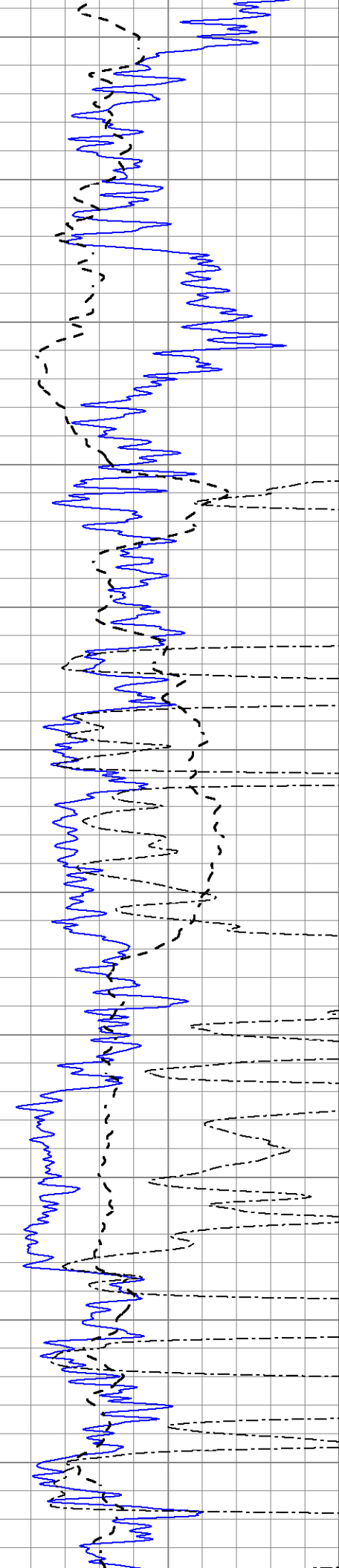
MAIN SECTION

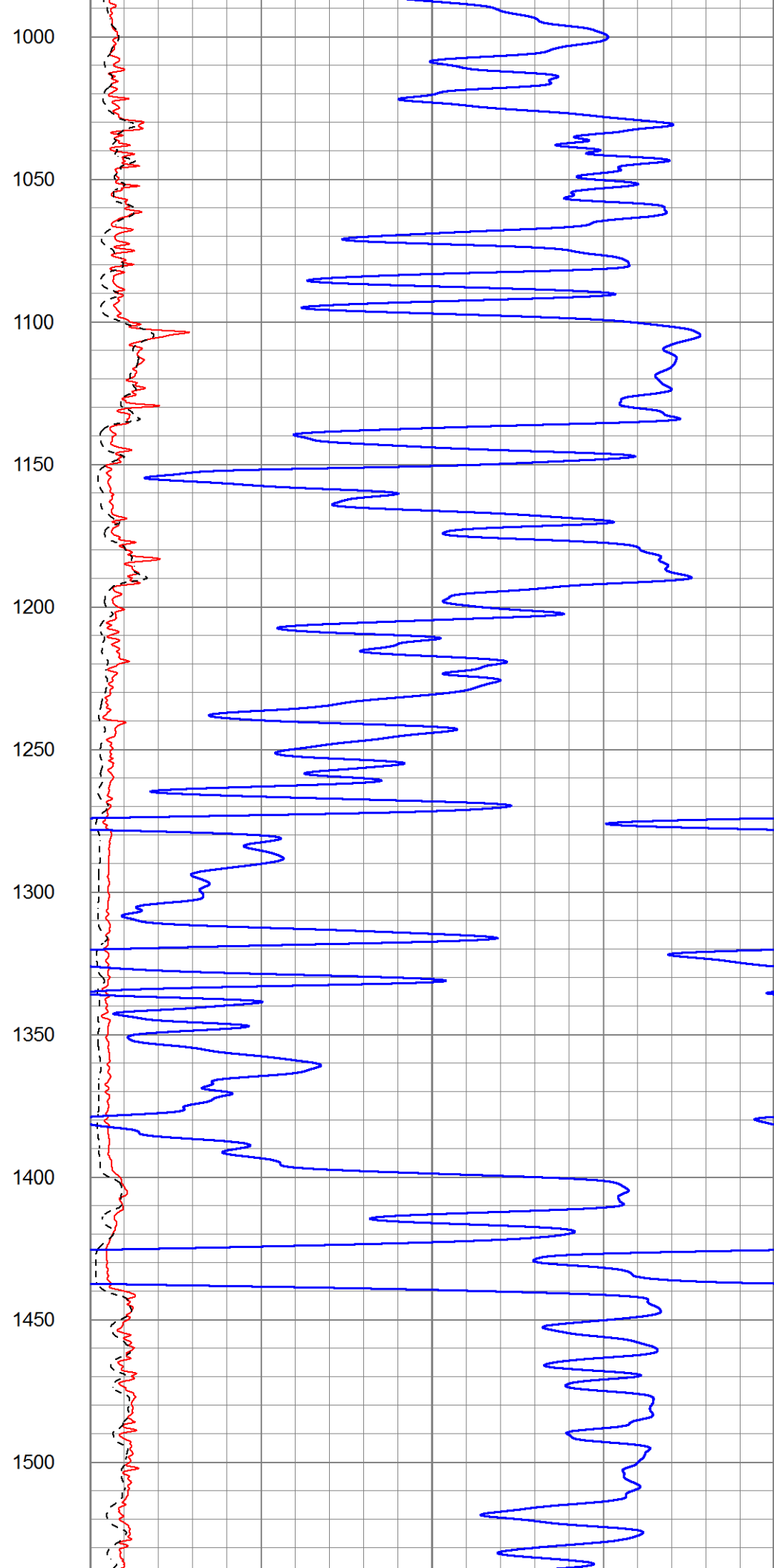
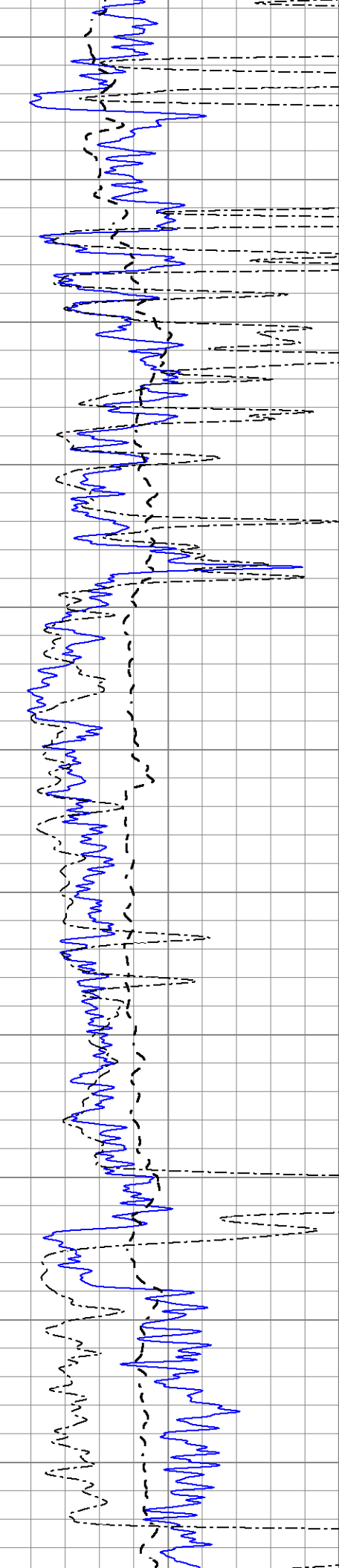
Database File 7081pe.db
 Dataset Pathname pass4.1M
 Presentation Format _dil2
 Dataset Creation Fri Sep 23 20:08:10 2022
 Charted by Depth in Feet scaled 1:600

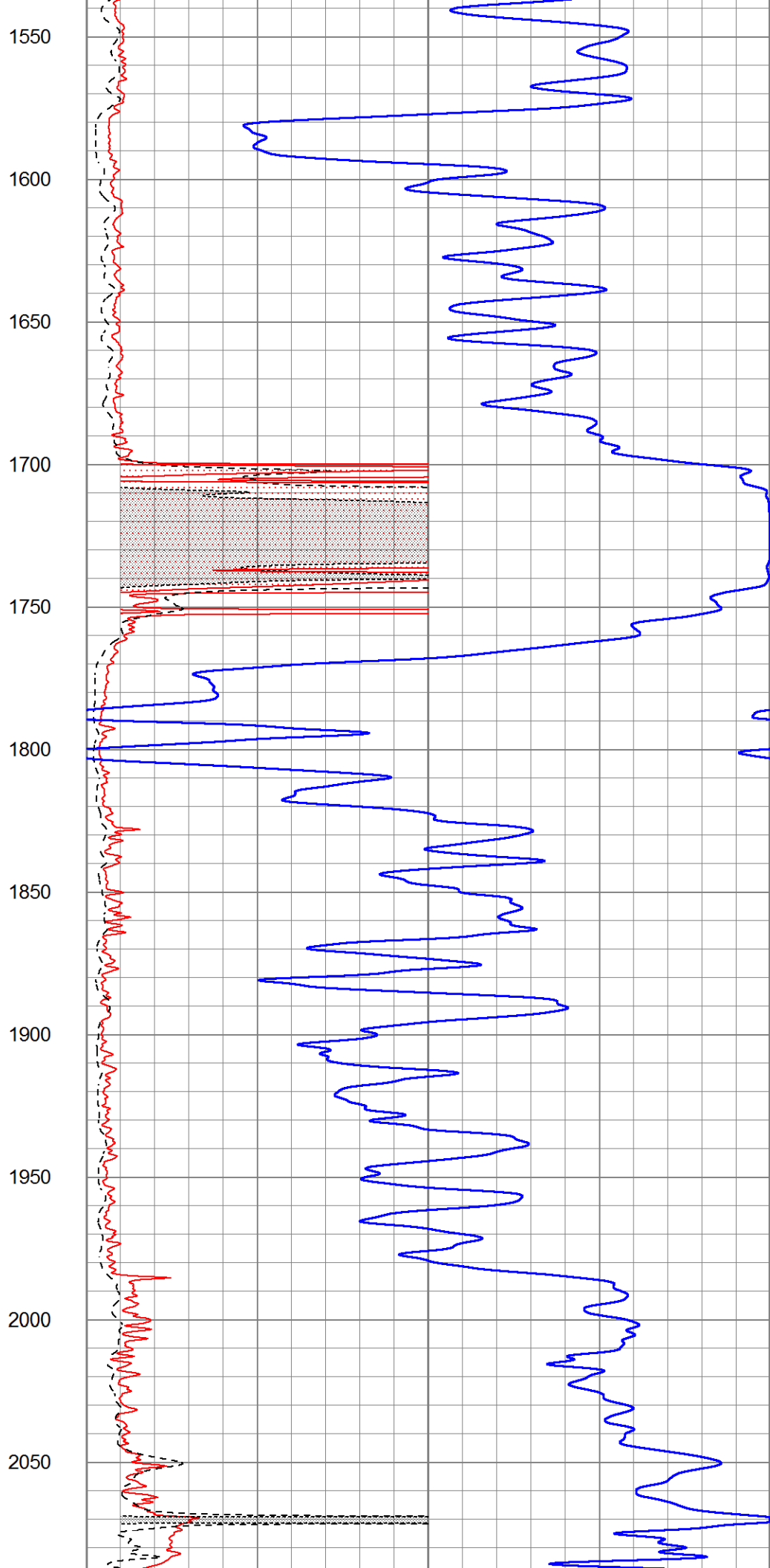
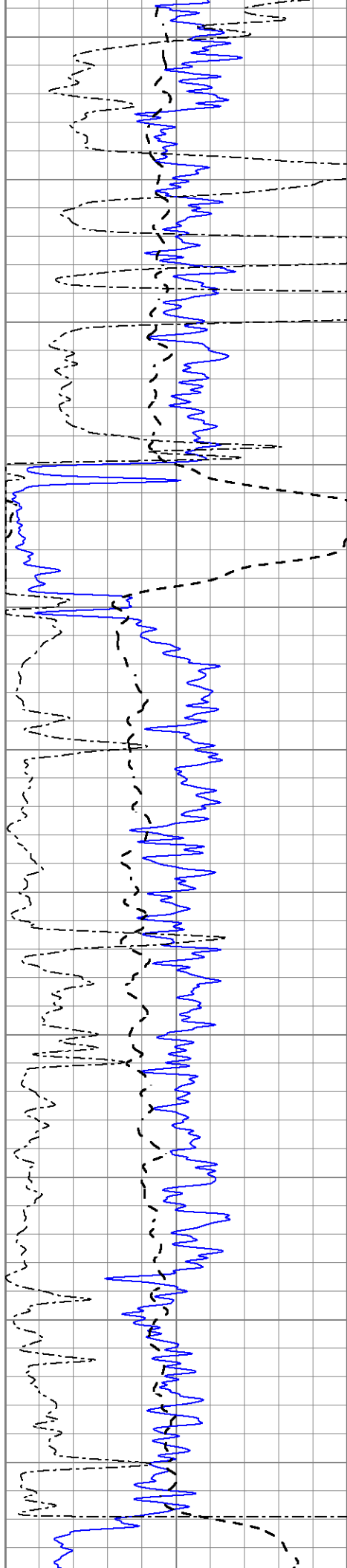
0	Gamma Ray (GAPI)	150
-100	SP (mV)	100
0	RWA (Ohm-m)	1

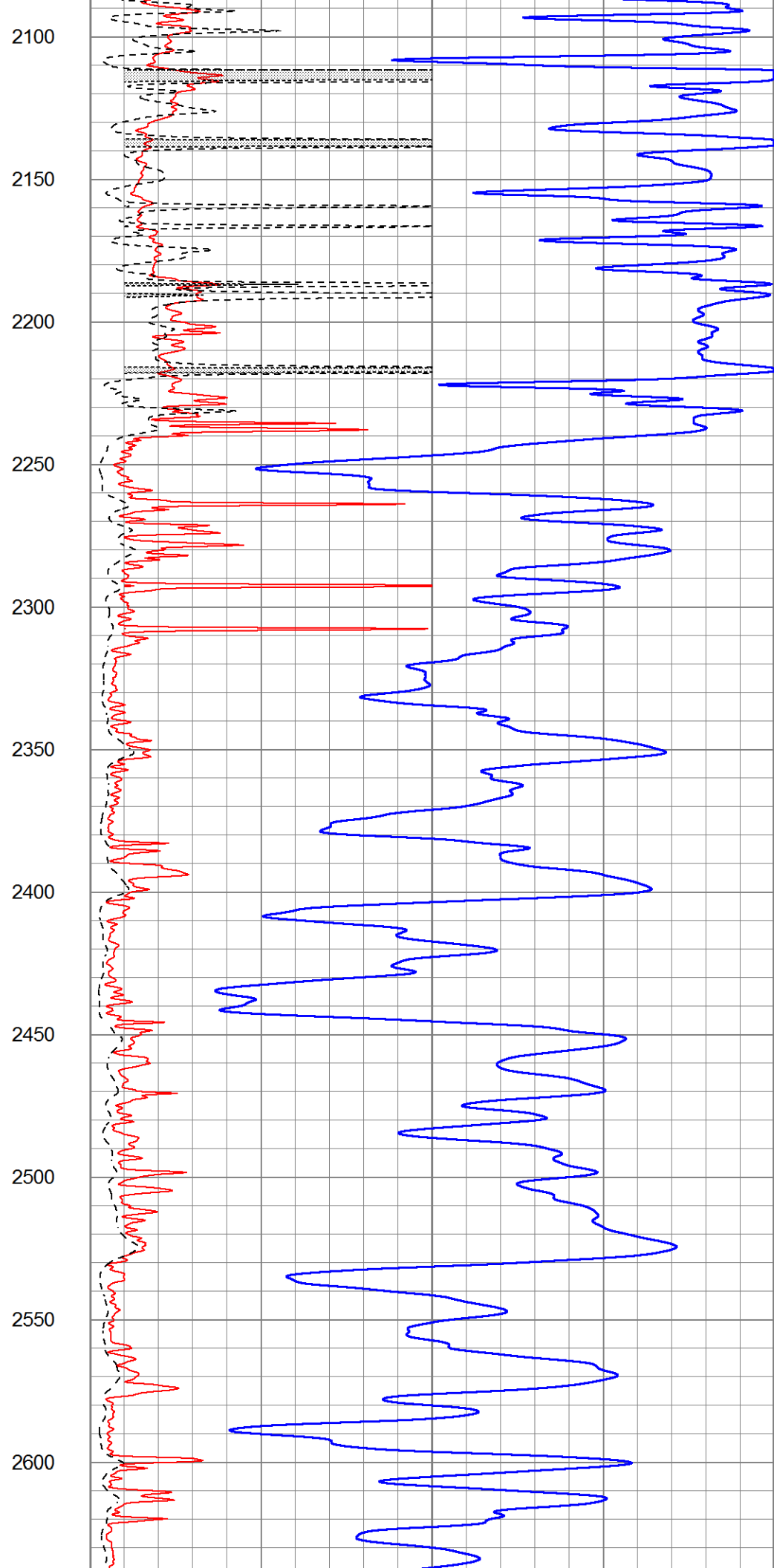
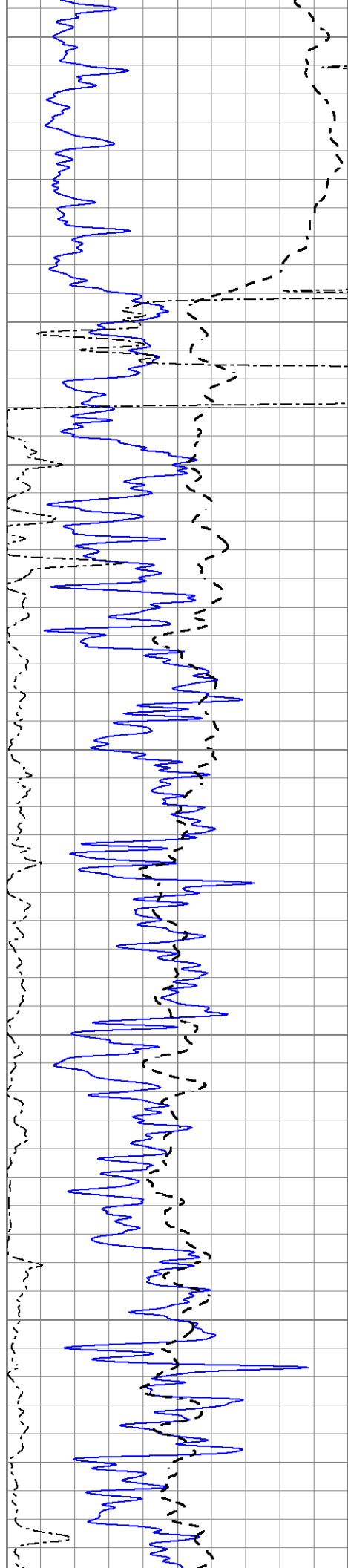
1000	CILD (mmho/m)	0
0	RLL3 (Ohm-m)	50
0	RILD (Ohm-m)	50
50	RILD X10 (Ohm-m)	500
50	RLL3 X10 (Ohm-m)	500

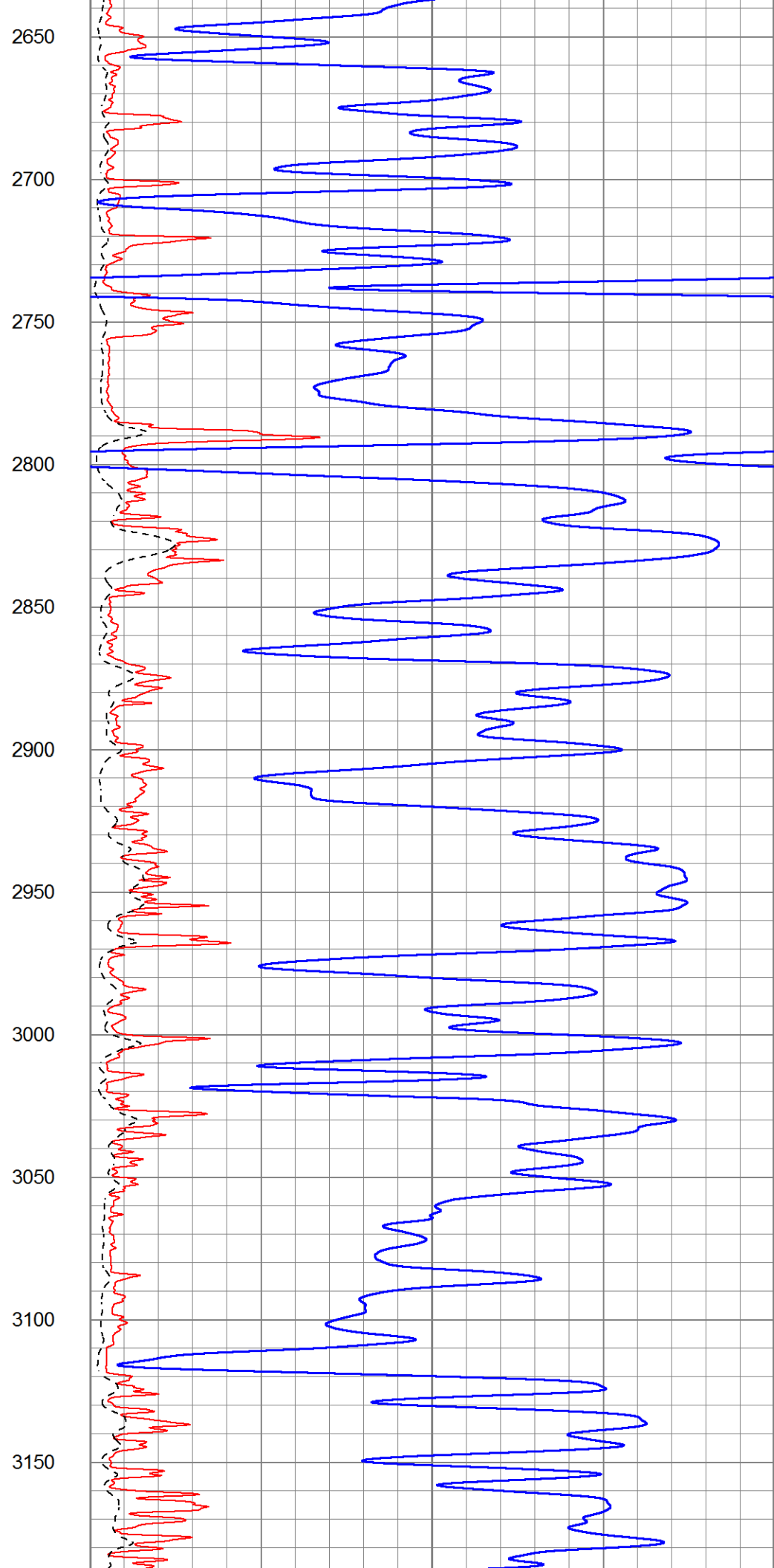
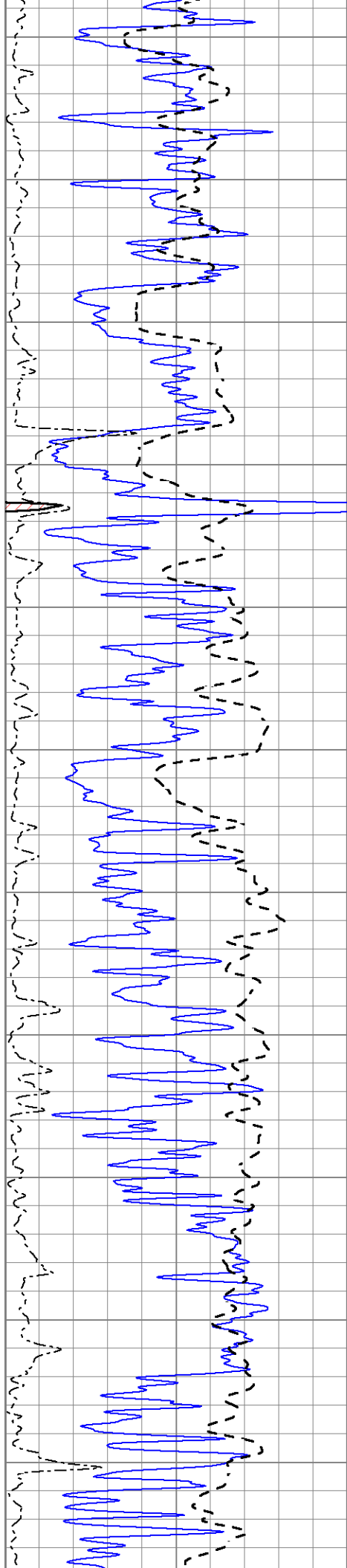


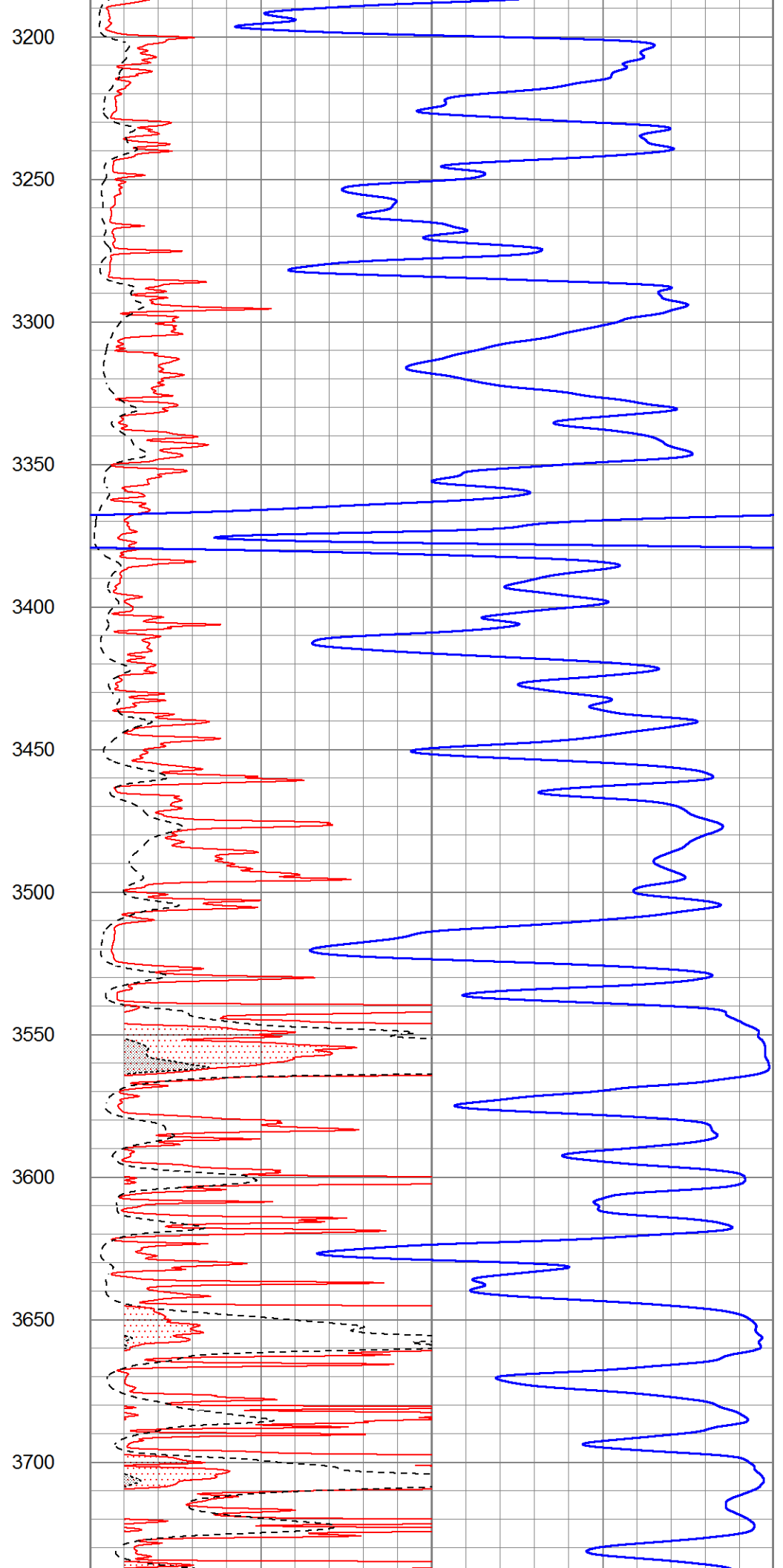
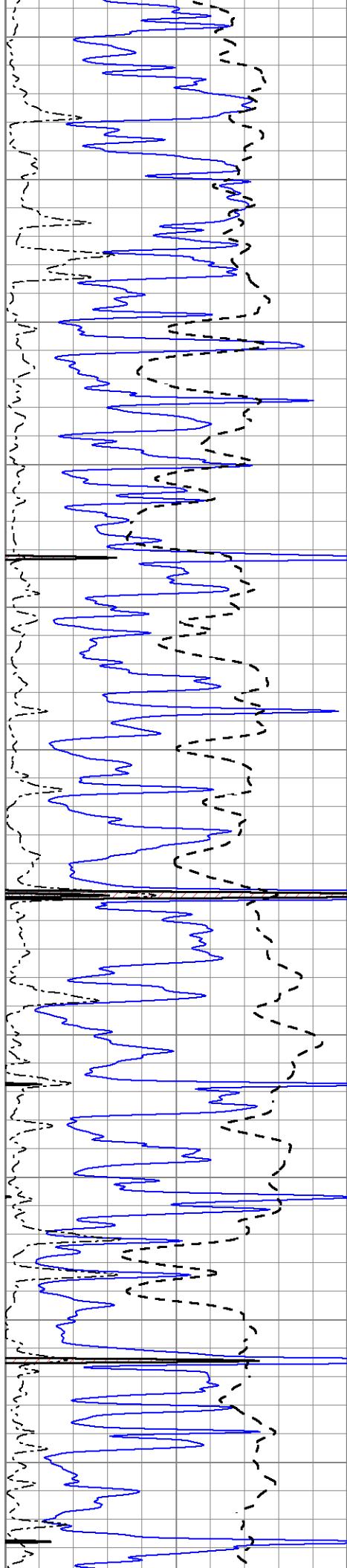


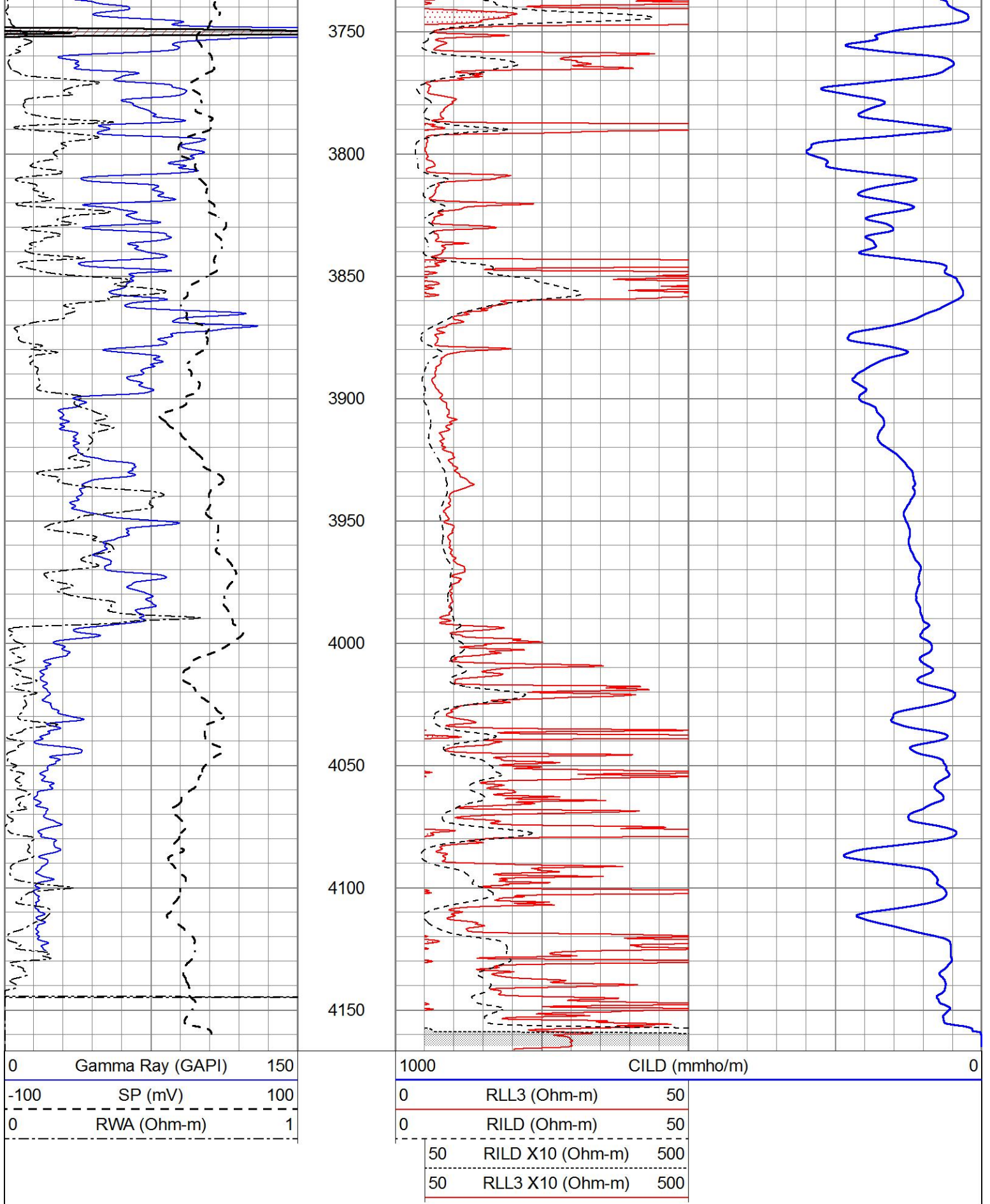










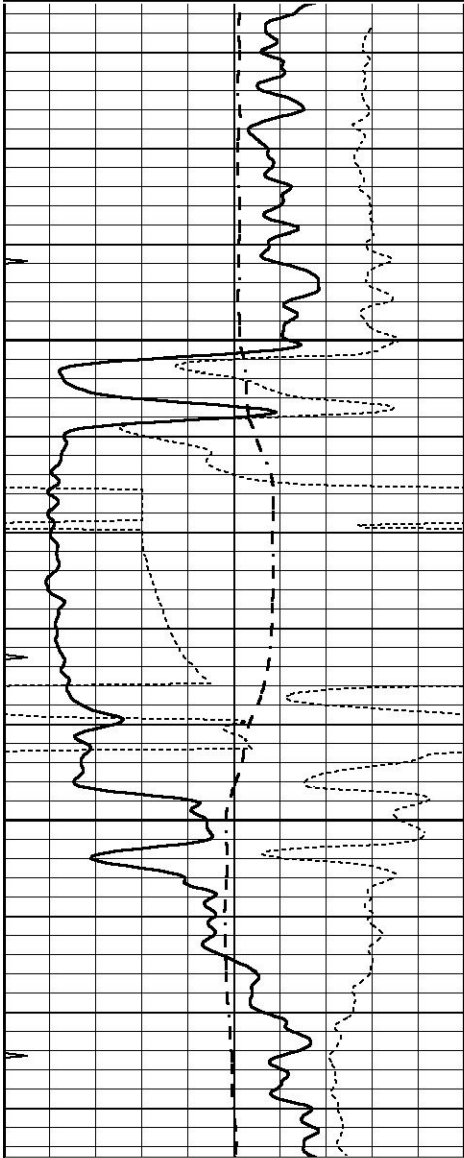


ANHYDRITE REPEAT

Database File 7081pe.db
 Dataset Pathname pass2.1A
 Presentation Format _dil
 Dataset Creation Fri Sep 23 18:23:27 2022
 Charted by Depth in Feet scaled 1:240

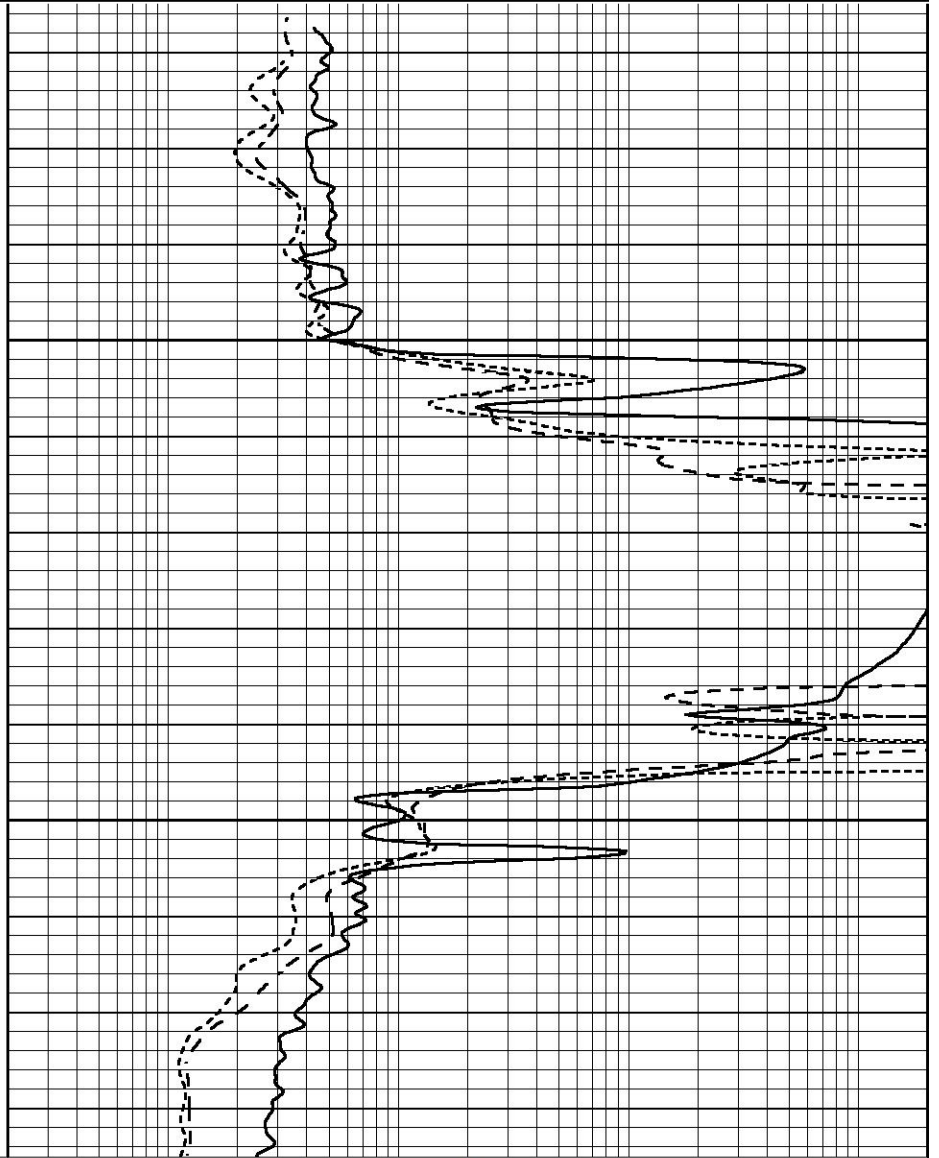
0	GAMMA RAY (GAPI)	150
-100	SP (mV)	100
-250	Rxo/Rt	50
0	MINMK	20

0.2	SHALLOW GUARD (Ohm-m)	2000
0.2	DEEP INDUCTION (Ohm-m)	2000
0.2	MEDIUM INDUCTION (Ohm-m)	2000



1700

1750



0	GAMMA RAY (GAPI)	150
-100	SP (mV)	100
-250	Rxo/Rt	50
0	MINMK	20

0.2	SHALLOW GUARD (Ohm-m)	2000
0.2	DEEP INDUCTION (Ohm-m)	2000
0.2	MEDIUM INDUCTION (Ohm-m)	2000

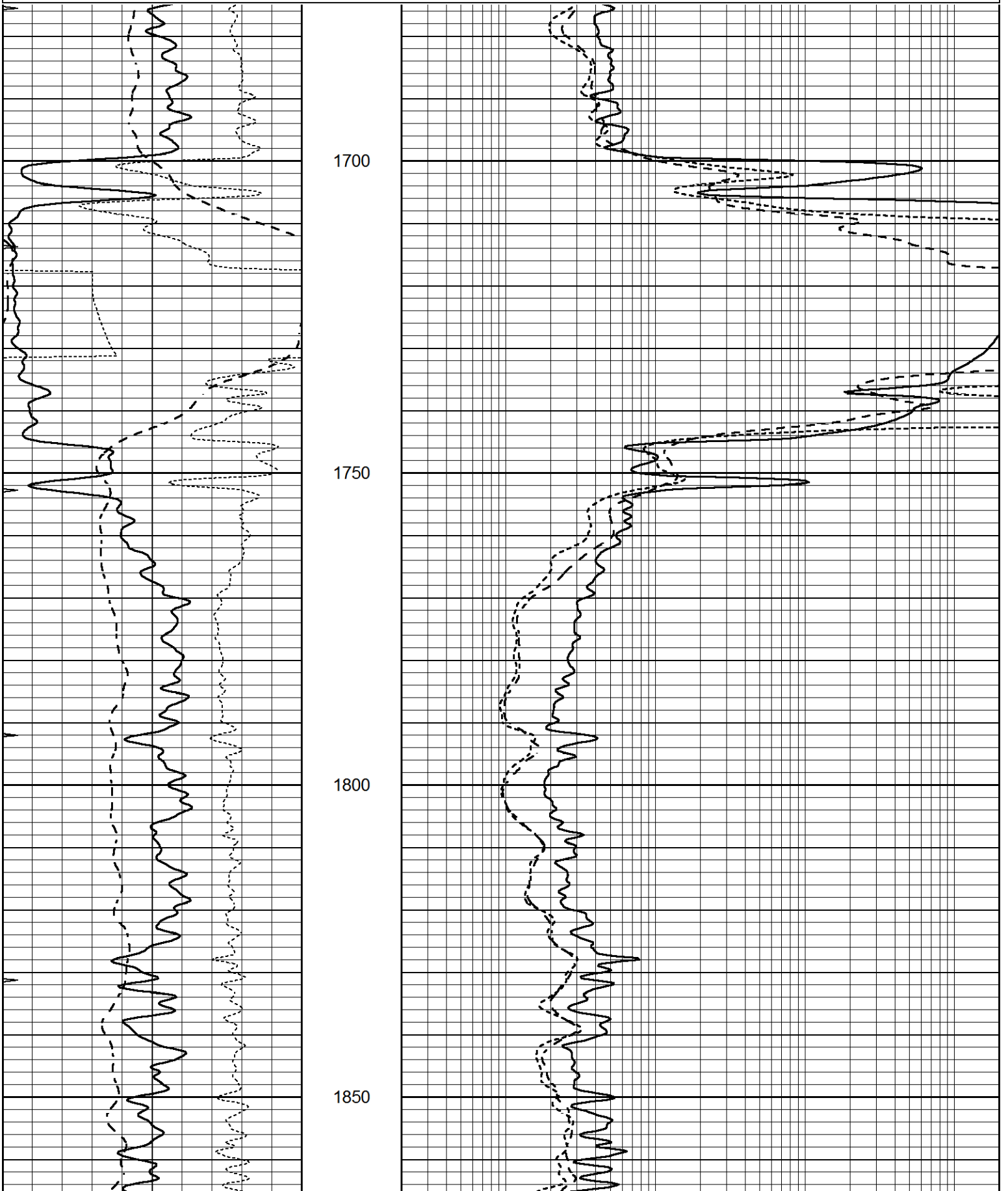


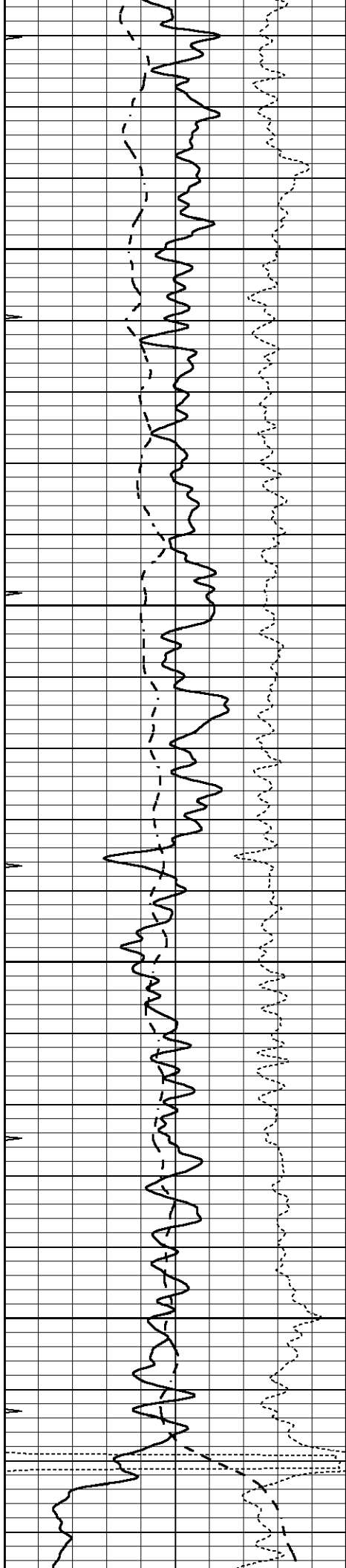
MAIN SECTION

Database File 7081pe.db
 Dataset Pathname pass4.1M
 Presentation Format dil

0	GAMMA RAY (GAPI)	150
-100	SP (mV)	100
-250	Rxo/Rt	50
0	MINMK	20

0.2	SHALLOW GUARD (Ohm-m)	2000
0.2	DEEP INDUCTION (Ohm-m)	2000
0.2	MEDIUM INDUCTION (Ohm-m)	2000



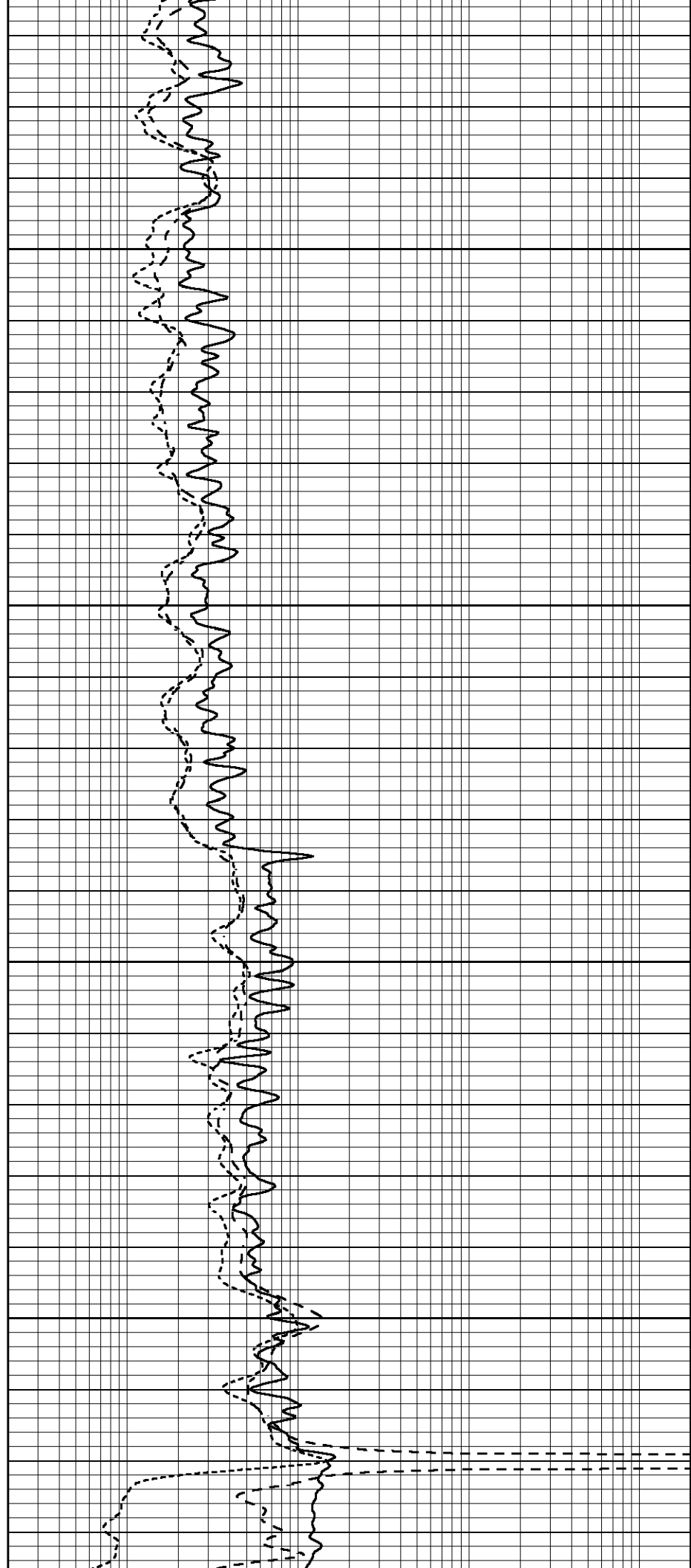


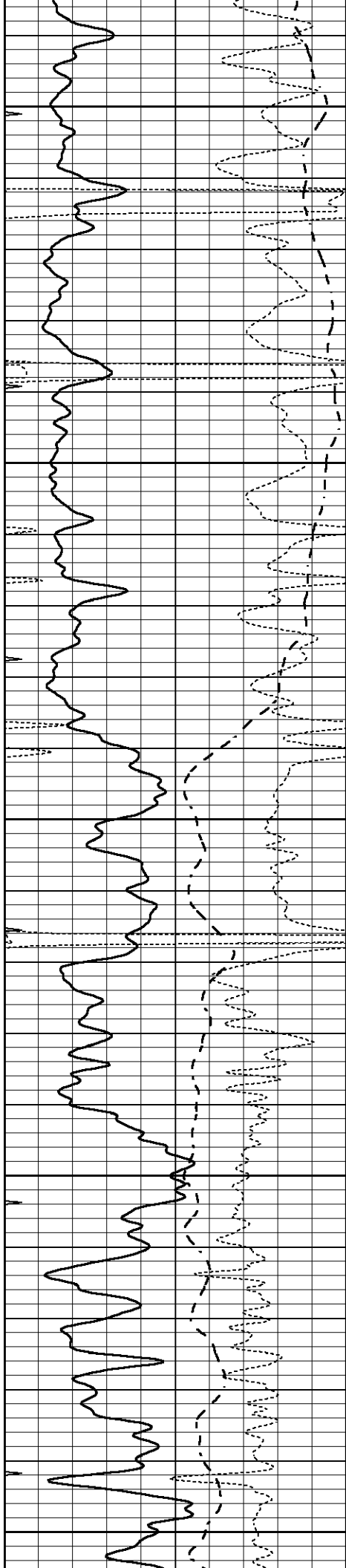
1900

1950

2000

2050





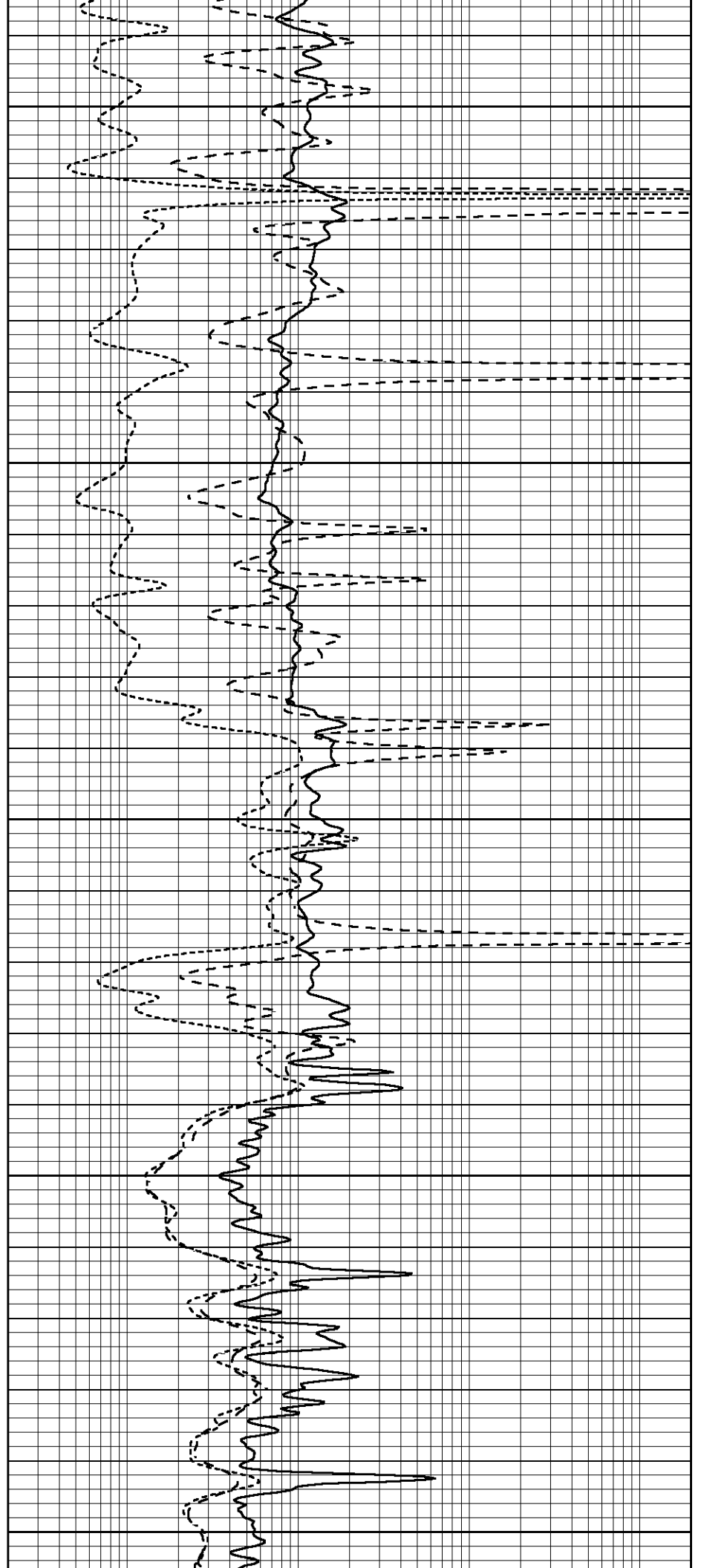
2100

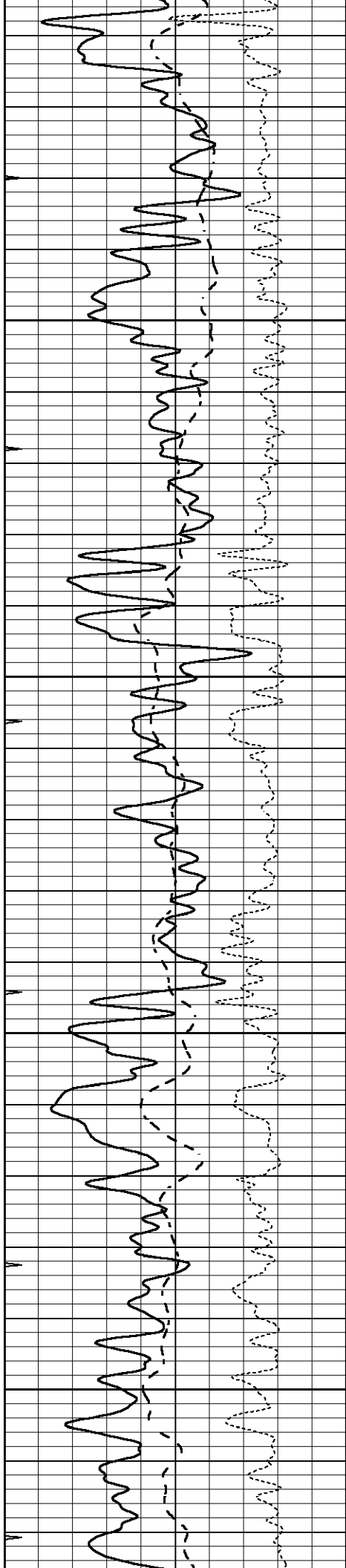
2150

2200

2250

2300



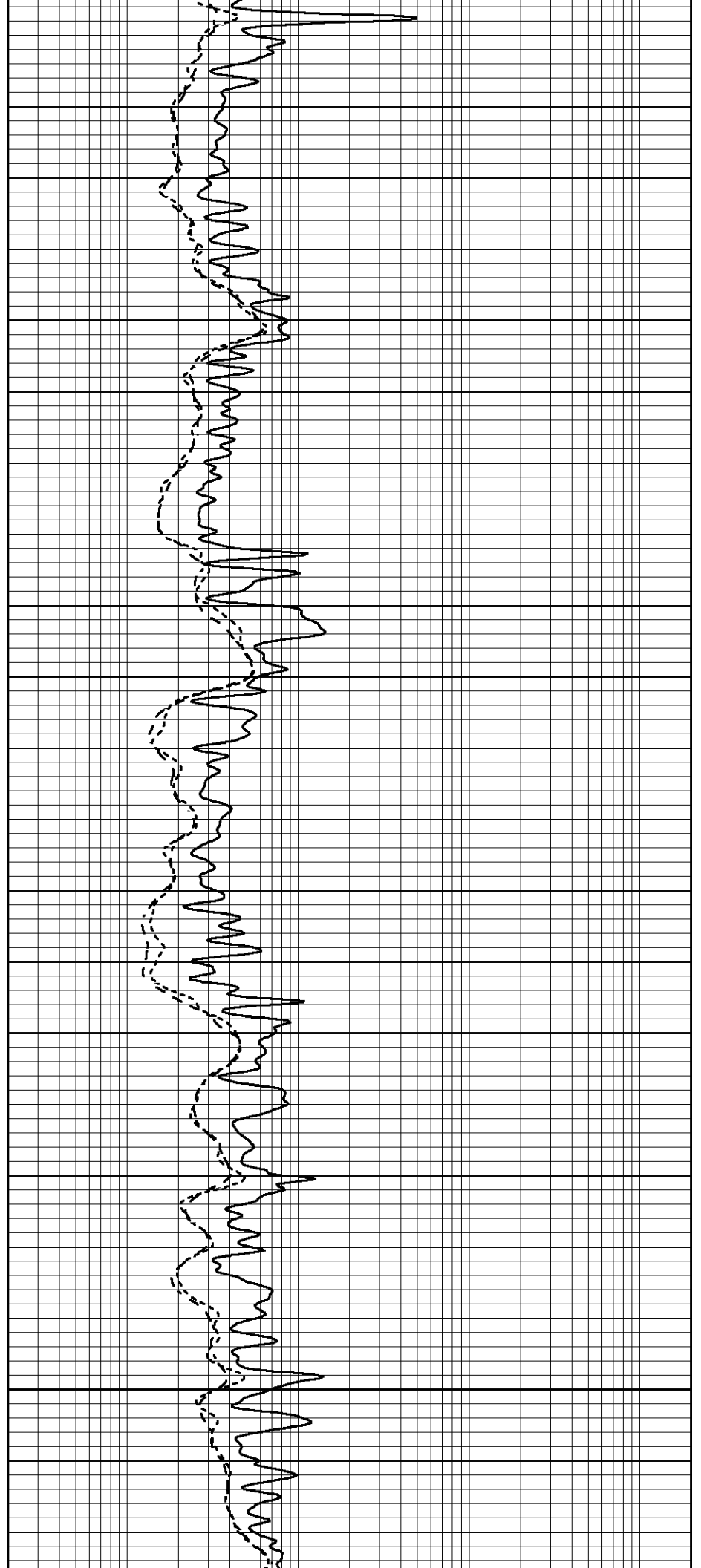


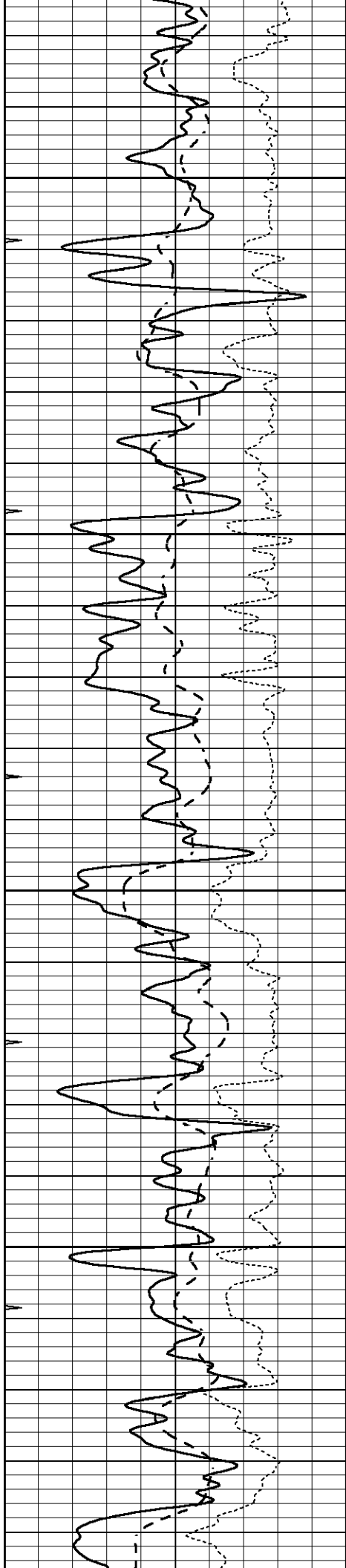
2350

2400

2450

2500



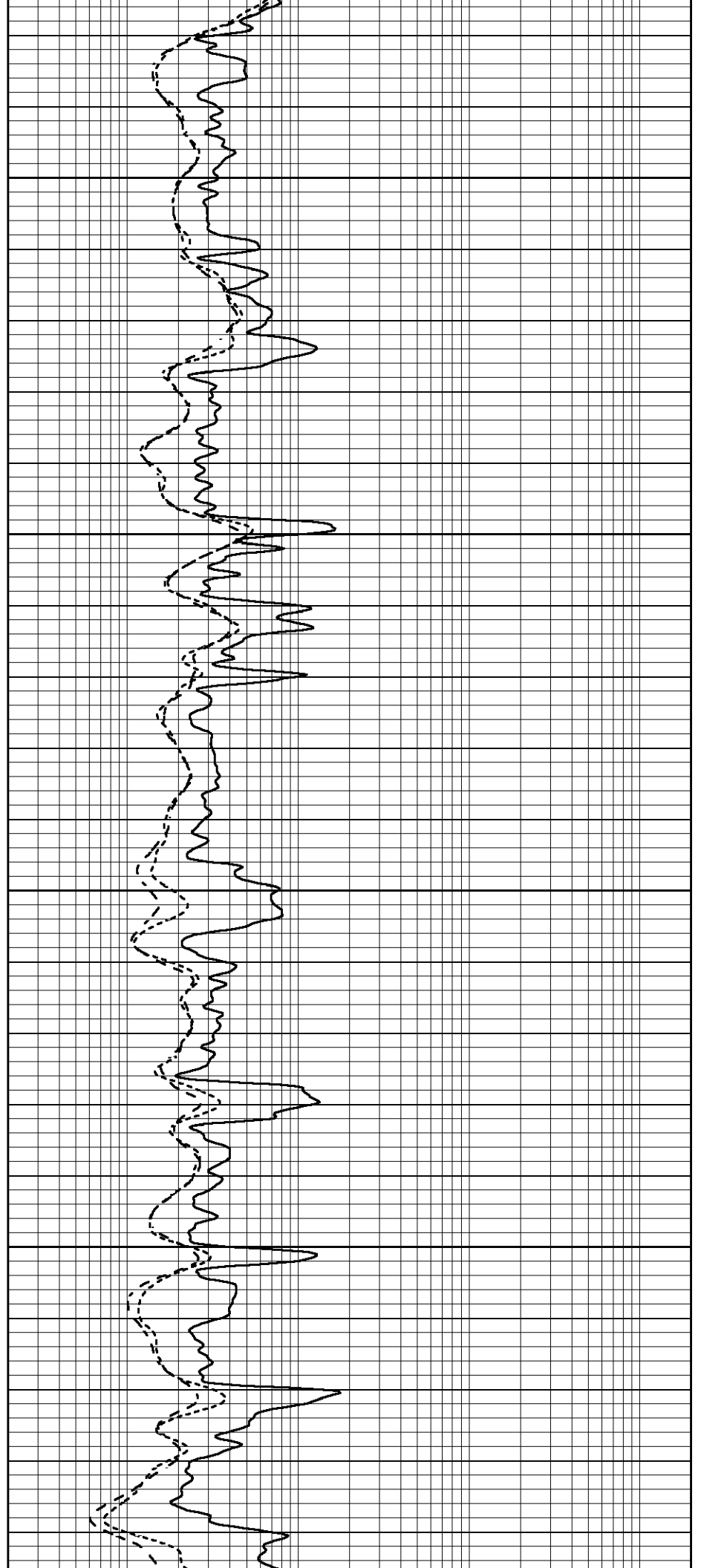


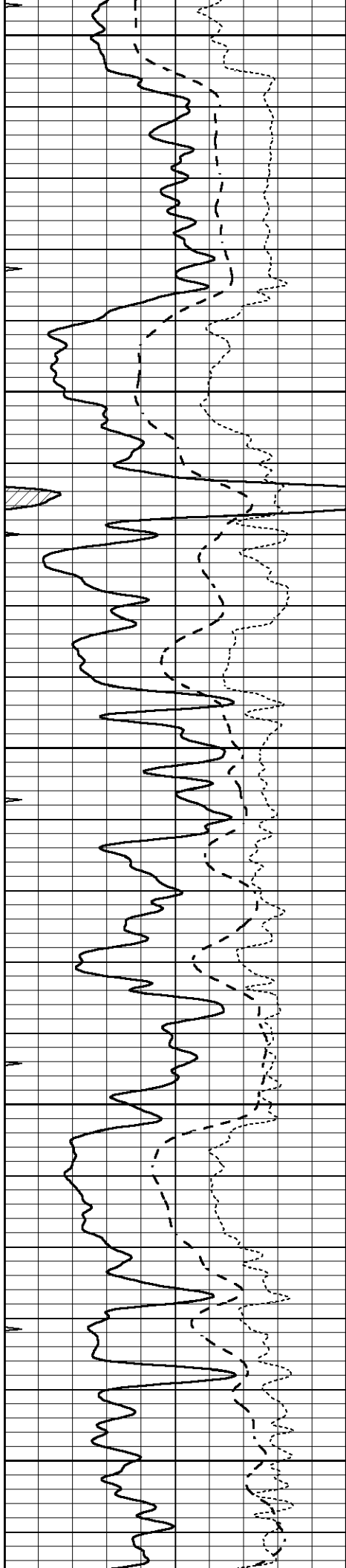
2550

2600

2650

2700





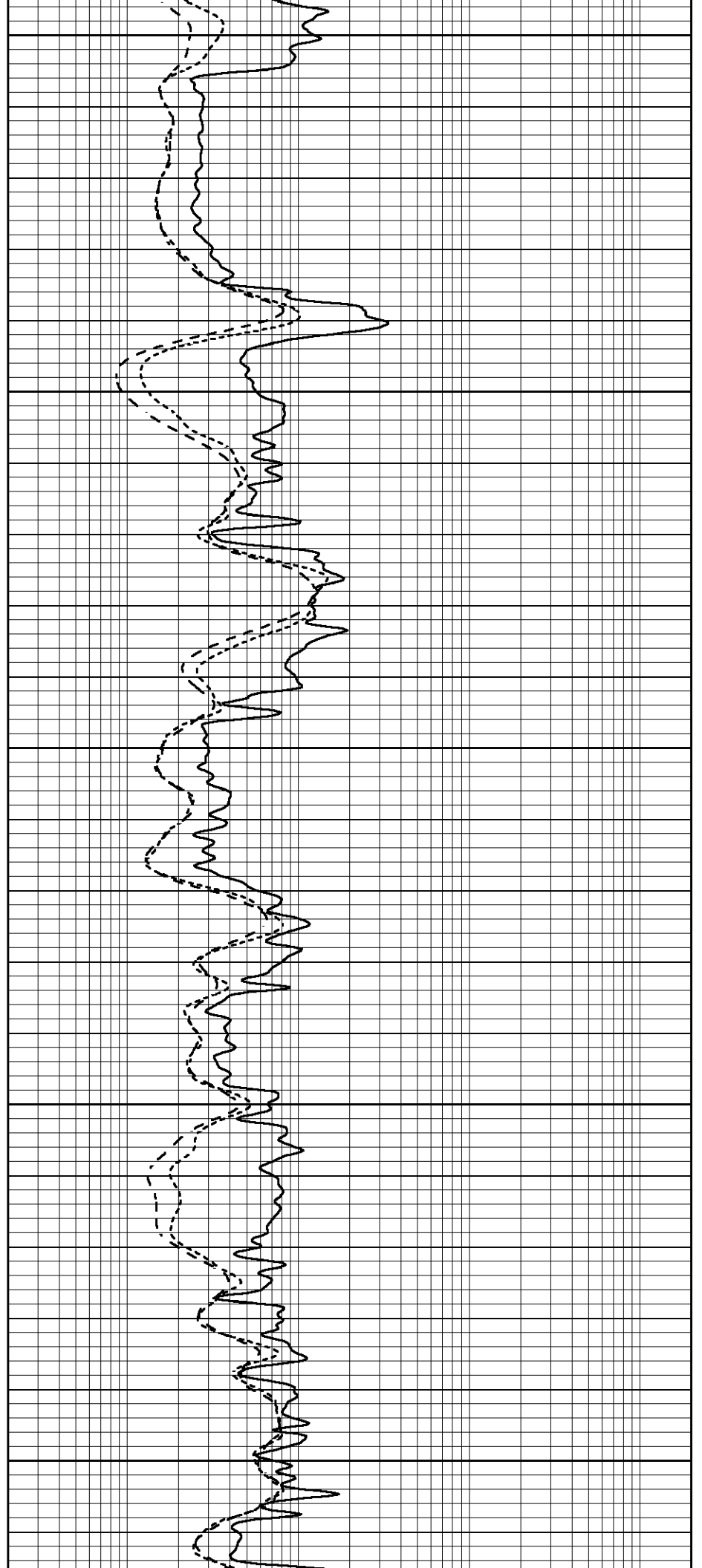
2750

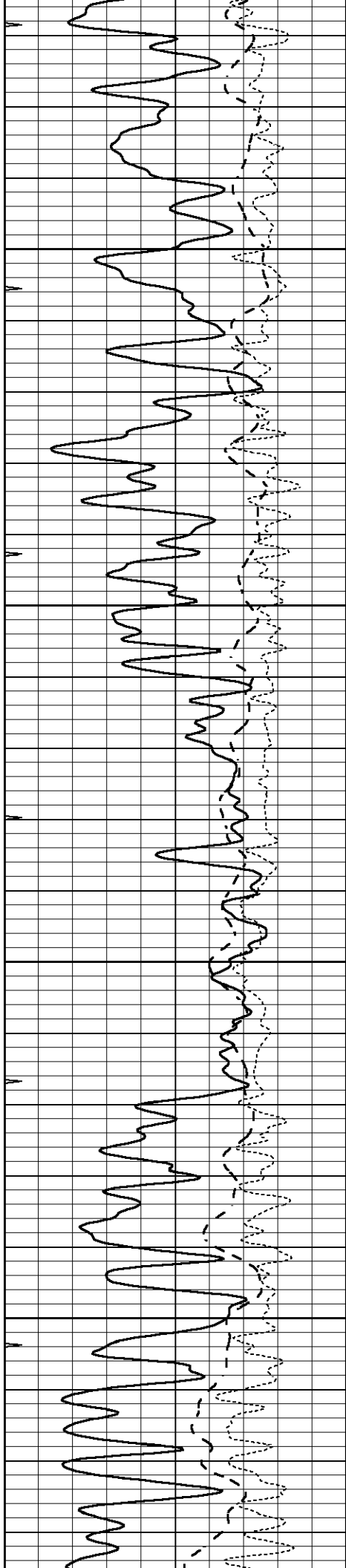
2800

2850

2900

2950



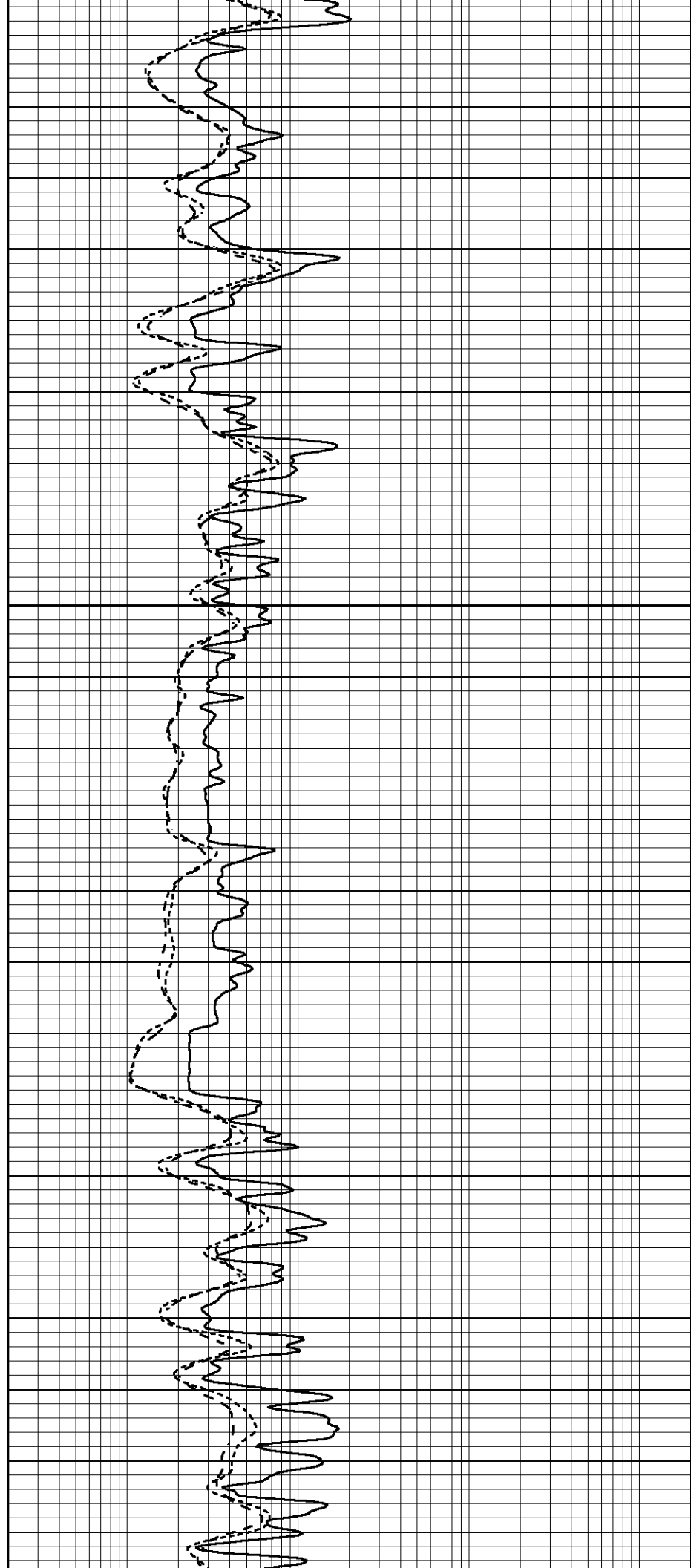


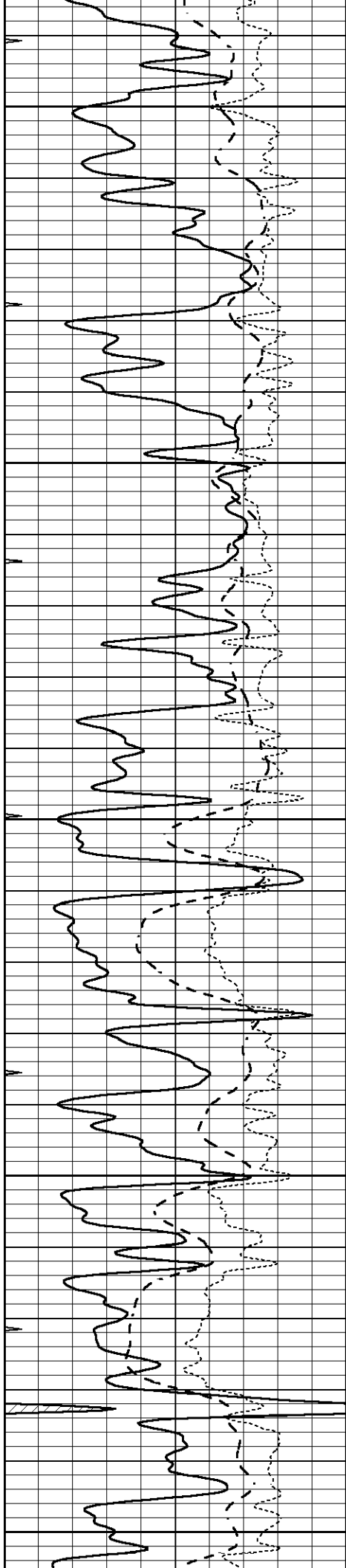
3000

3050

3100

3150





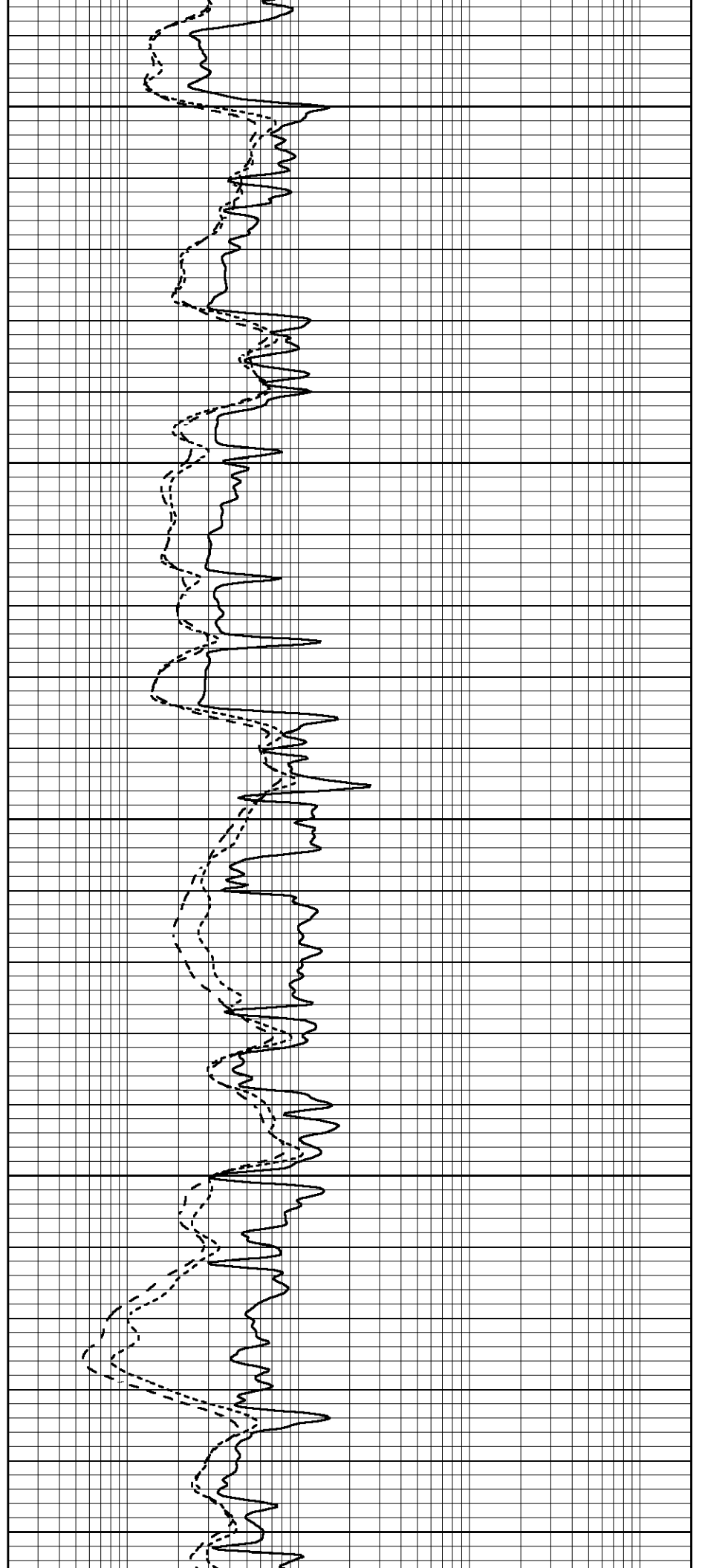
3200

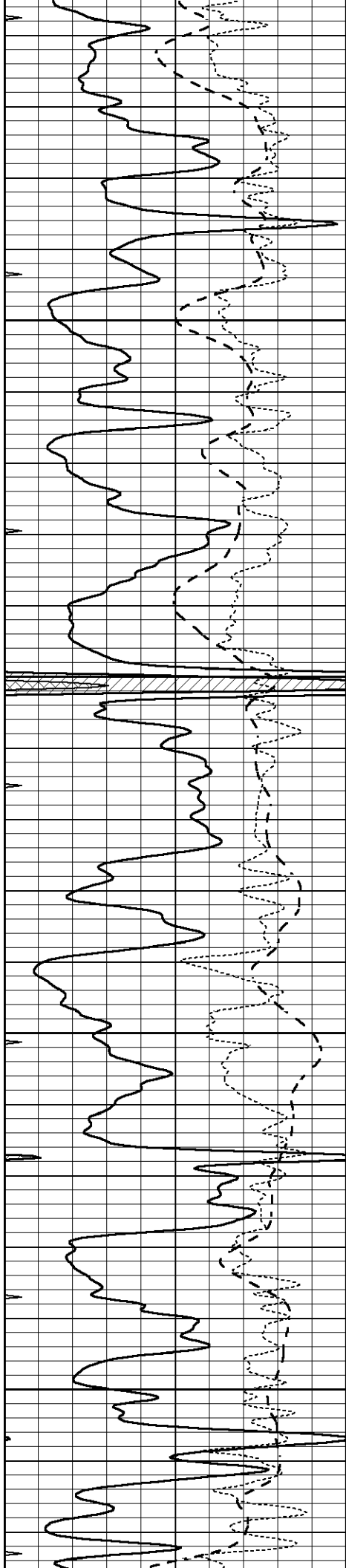
3250

3300

3350

3400



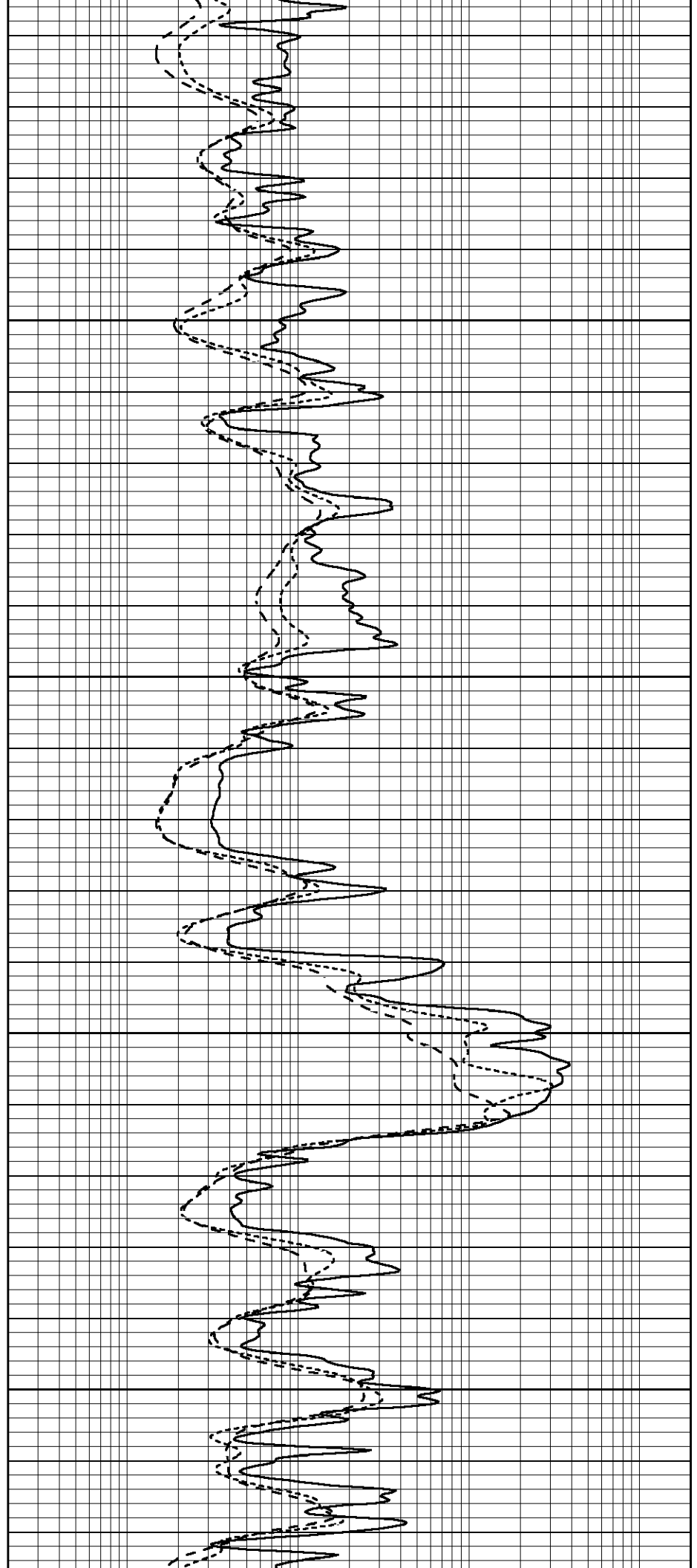


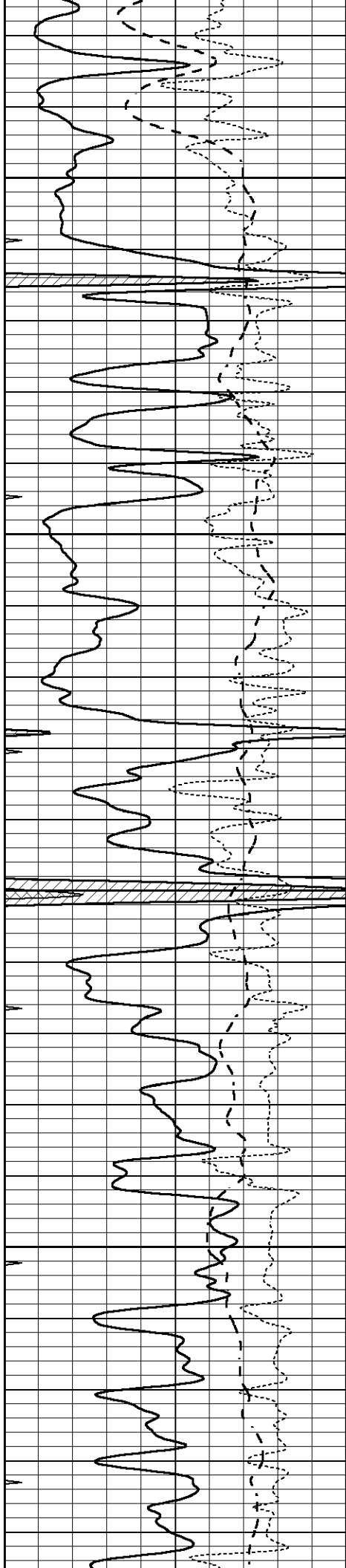
3450

3500

3550

3600



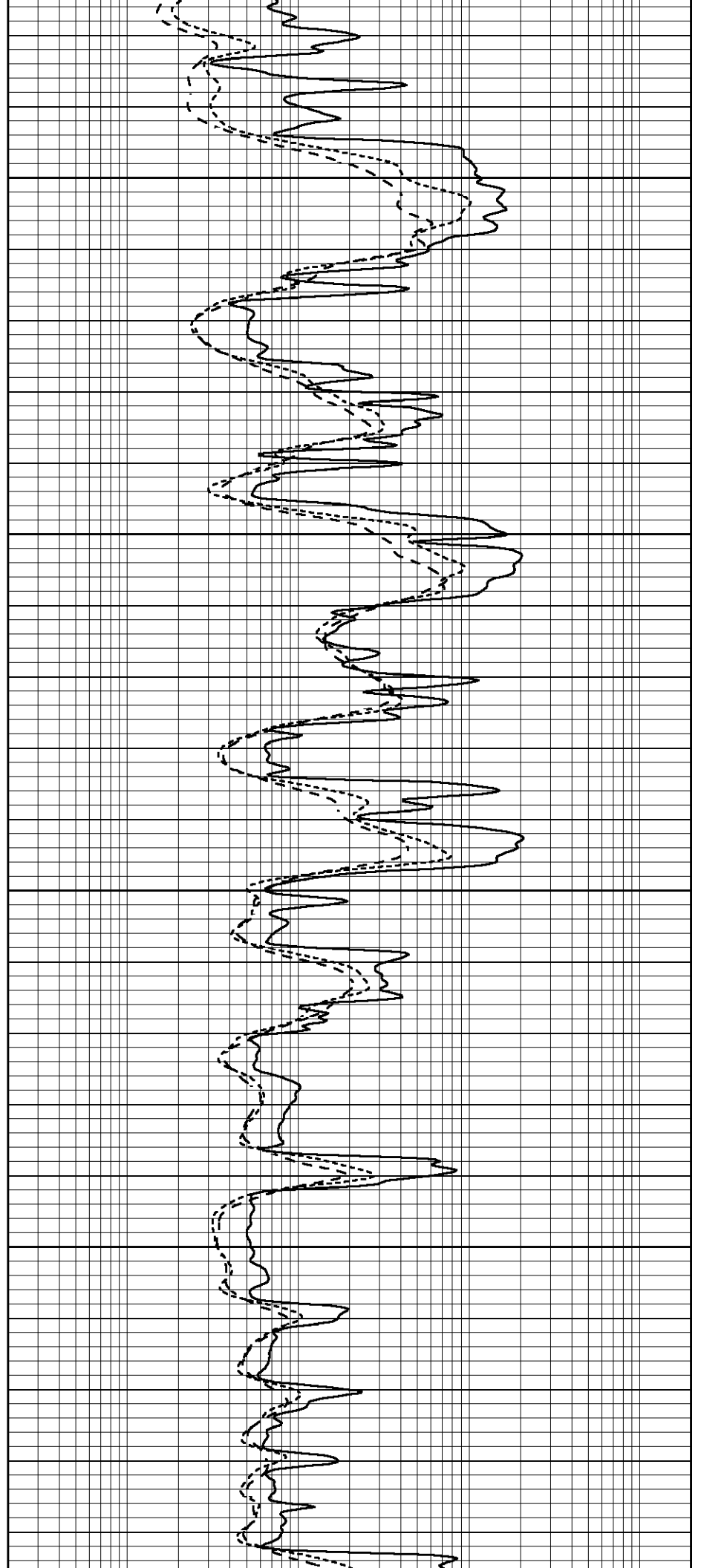


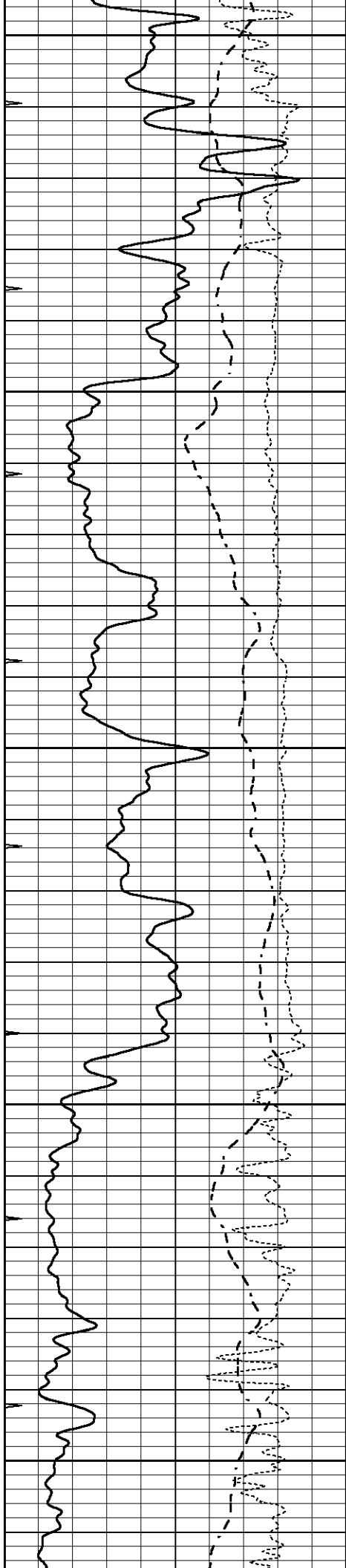
3650

3700

3750

3800





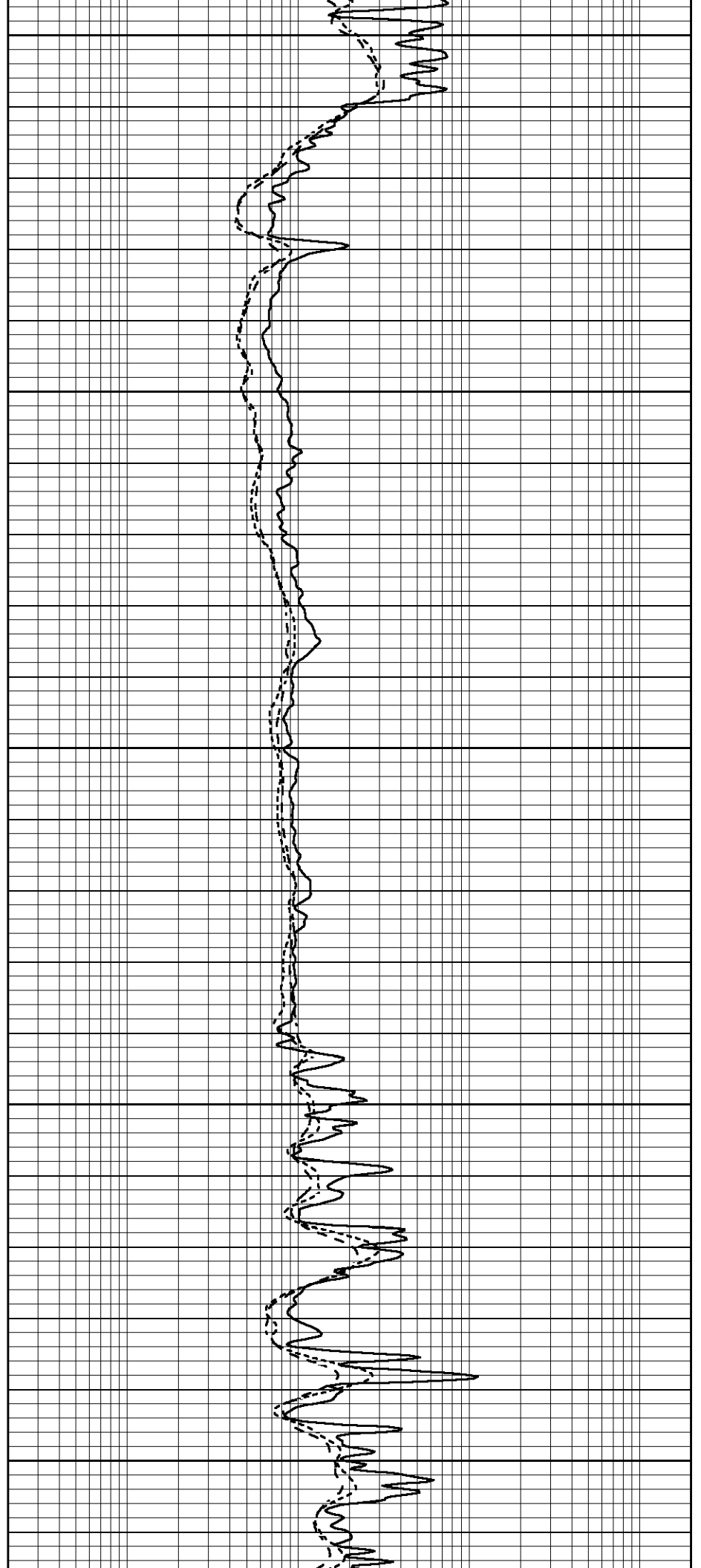
3850

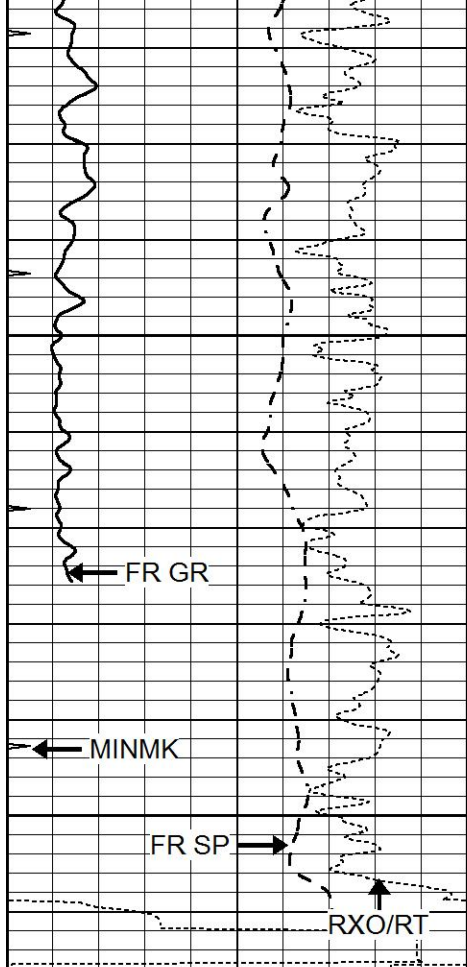
3900

3950

4000

4050



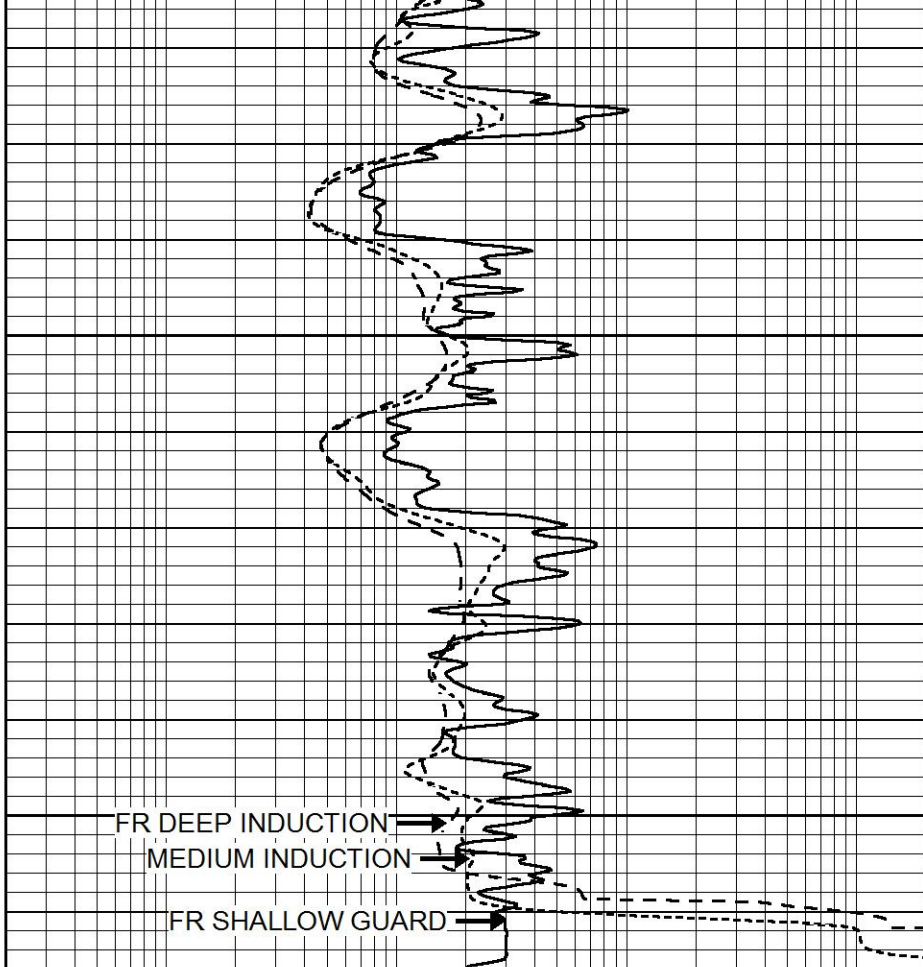


4100

4150

LTD 4163

0	GAMMA RAY (GAPI)	150
-100	SP (mV)	100
-250	Rxo/Rt	50
0	MINMK	20



0.2	SHALLOW GUARD (Ohm-m)	2000
0.2	DEEP INDUCTION (Ohm-m)	2000
0.2	MEDIUM INDUCTION (Ohm-m)	2000

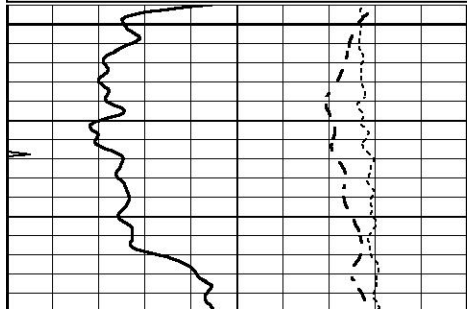


REPEAT SECTION

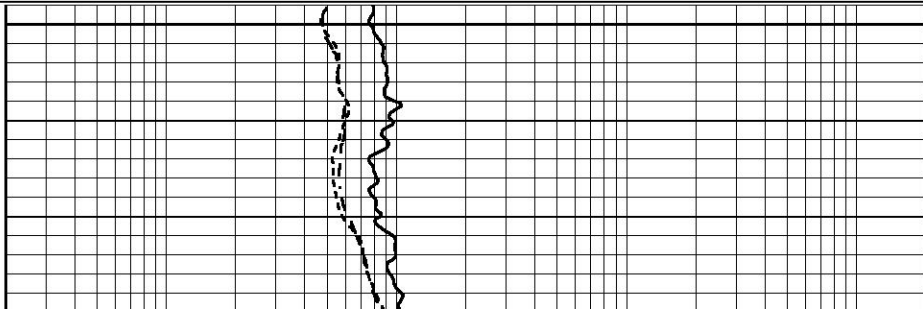
Database File 7081pe.db
 Dataset Pathname pass3.2R
 Presentation Format _dil
 Dataset Creation Fri Sep 23 18:57:33 2022
 Charted by Depth in Feet scaled 1:240

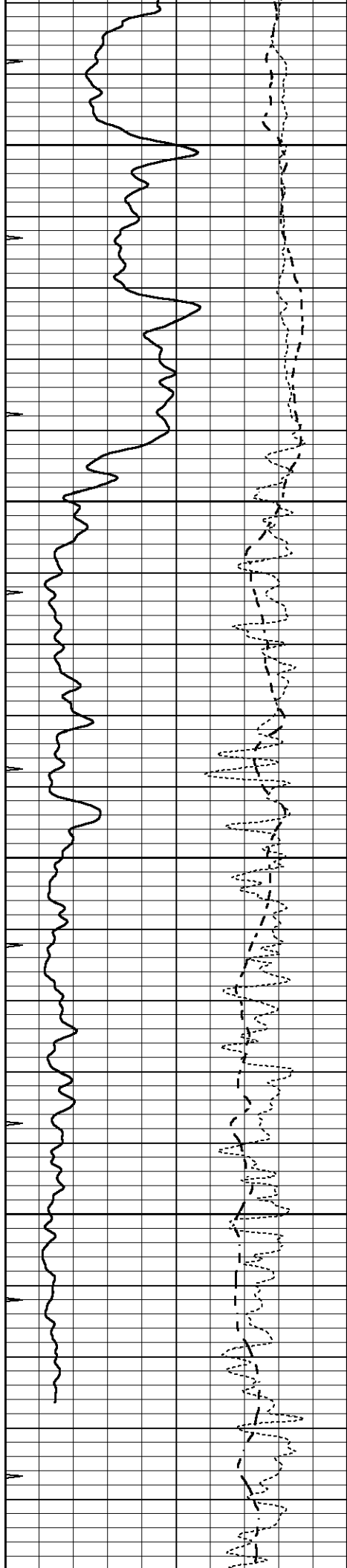
0	GAMMA RAY (GAPI)	150
-100	SP (mV)	100
-250	Rxo/Rt	50
0	MINMK	20

0.2	SHALLOW GUARD (Ohm-m)	2000
0.2	DEEP INDUCTION (Ohm-m)	2000
0.2	MEDIUM INDUCTION (Ohm-m)	2000



3900





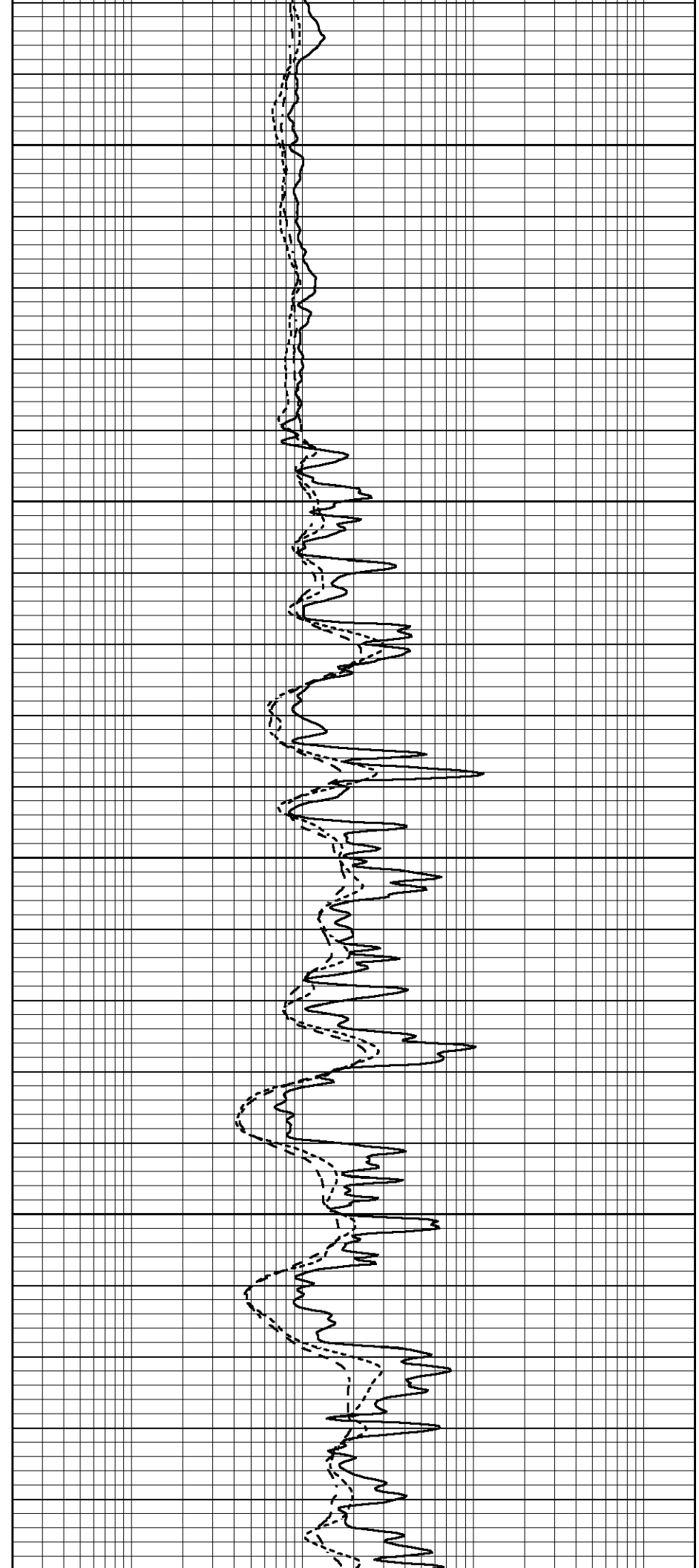
3950

4000

4050

4100

4150



Window 1	1154.2	10019.5	3137.9	2795.6	cps
Window 2	1054.4	8597.6	2733.4	2469.5	cps
Window 3	902.3	5241.4	1832.1	1719.3	cps
Window 4	251.9	261.1	255.8	252.9	cps
Long Space	0.0	7543.2	1679.0	1415.0	cps
Short Space	4.4	2049.3	1321.7	1116.8	cps
Rho		1.7100	2.5900	0.0000	g/cc
Pe		2.0000	2.7500	5.7900	

Rib Angle	: 43.7	Rib Slope	: 0.957	Density/Spine Ratio	: 0.562
Spine Angle	: 73.7	Spine Slope	: 3.426	Spine Intercept	: -17.2

Before Survey Verification

Performed Wed Dec 31 18:00:00 1969

Window 1	0.0	0.0	0.0	0.0	cps
Window 2	0.0	0.0	0.0	0.0	cps
Window 3	0.0	0.0	0.0	0.0	cps
Window 4	0.0	0.0	0.0	0.0	cps
Long Space	0.0	0.0	0.0	0.0	cps
Short Space	0.0	0.0	0.0	0.0	cps
Measured Rho		0.0000	0.0000	0.0000	g/cc
Measured Correction		0.0000	0.0000	0.0000	g/cc
Measured Pe			0.0000	0.0000	

After Survey Verification

Performed Wed Dec 31 18:00:00 1969

Window 1	0.0	0.0	0.0	0.0	cps
Window 2	0.0	0.0	0.0	0.0	cps
Window 3	0.0	0.0	0.0	0.0	cps
Window 4	0.0	0.0	0.0	0.0	cps
Long Space	0.0	0.0	0.0	0.0	cps
Short Space	0.0	0.0	0.0	0.0	cps
Measured Rho		0.0000	0.0000	0.0000	g/cc
Measured Correction		0.0000	0.0000	0.0000	g/cc
Measured Pe			0.0000	0.0000	

Compensated Neutron Calibration Report

Serial Number: 070808PMC
Tool Model: NABORS

PRE-SURVEY VERIFICATION

Detector	Readings	Measured	Target
Short Space	cps		
Long Space	cps	pu	pu

POST-SURVEY VERIFICATION

Detector	Readings	Measured	Target
Short Space	cps		
Long Space	cps	pu	pu

Gamma Ray Calibration Report

Serial Number: 070558
Tool Model: OPEN_GR
Performed: Wed Sep 21 20:51:29 2022

Calibrator Value:	1.0	GAPI
Background Reading:	0.0	cps
Calibrator Reading:	1.0	cps
Sensitivity:	0.3000	GAPI/cps