

SONIC
LOG



Company NEC OPERATING - KANSAS, LLC.
Well ELLIE #1
Field STRATTON
County TREGO State KANSAS

Location: 2310' FSL & 1700' FWL
E/2 - NW - NE - SW
API #: 15-195-23144-0000
SEC 18 TWP 11S RGE 21W
Permanent Datum GROUND LEVEL Elevation 2231
Log Measured From KELLY BUSHING 7' A.G.L.
Drilling Measured From KELLY BUSHING
Other Services
CDL/CNL/PE
DIL/MEI
Elevation
K.B. 2238
D.F. 2236
G.L. 2231

Date	9/23/22	
Run Number	TWO	
Depth Driller	4100	
Depth Logger	4163	
Bottom Logged Interval	4155	
Top Log Interval	200	
Casing Driller	8 5/8"@254'	
Casing Logger	264	
Bit Size	7 7/8"	
Type Fluid in Hole	CHEMICAL MUD	CHLORIDES 4,800 PPM
Density / Viscosity	9.3/58	
pH / Fluid Loss	10.0/6.0	
Source of Sample	FLOWLINE	
Rm @ Meas. Temp	.850@76F	
Rmf @ Meas. Temp	.638@76F	
Rmc @ Meas. Temp	1.02@76F	
Source of Rmf / Rmc	MEASUREMENT	
Rm @ BHT	.552@117F	
Time Circulation Stopped	4:5 HOURS	
Time Logger on Bottom	8:30 P.M.	
Maximum Recorded Temperature	117F	
Equipment Number	922339	
Location	HAYS, KANSAS	
Recorded By	JEFF LUEBBERS	
Witnessed By	SEAN DEENIHAN	

<<< Fold Here >>>

All interpretations are opinions based on inferences from electrical or other measurements and we cannot and do not guarantee the accuracy or correctness of any interpretation, and we shall not, except in the case of gross or willful negligence on our part, be liable or responsible for any loss, costs, damages, or expenses incurred or sustained by anyone resulting from any interpretation made by any of our officers, agents or employees. These interpretations are also subject to our general terms and conditions set out in our current Price Schedule.

15-195-23144-0000 Comments

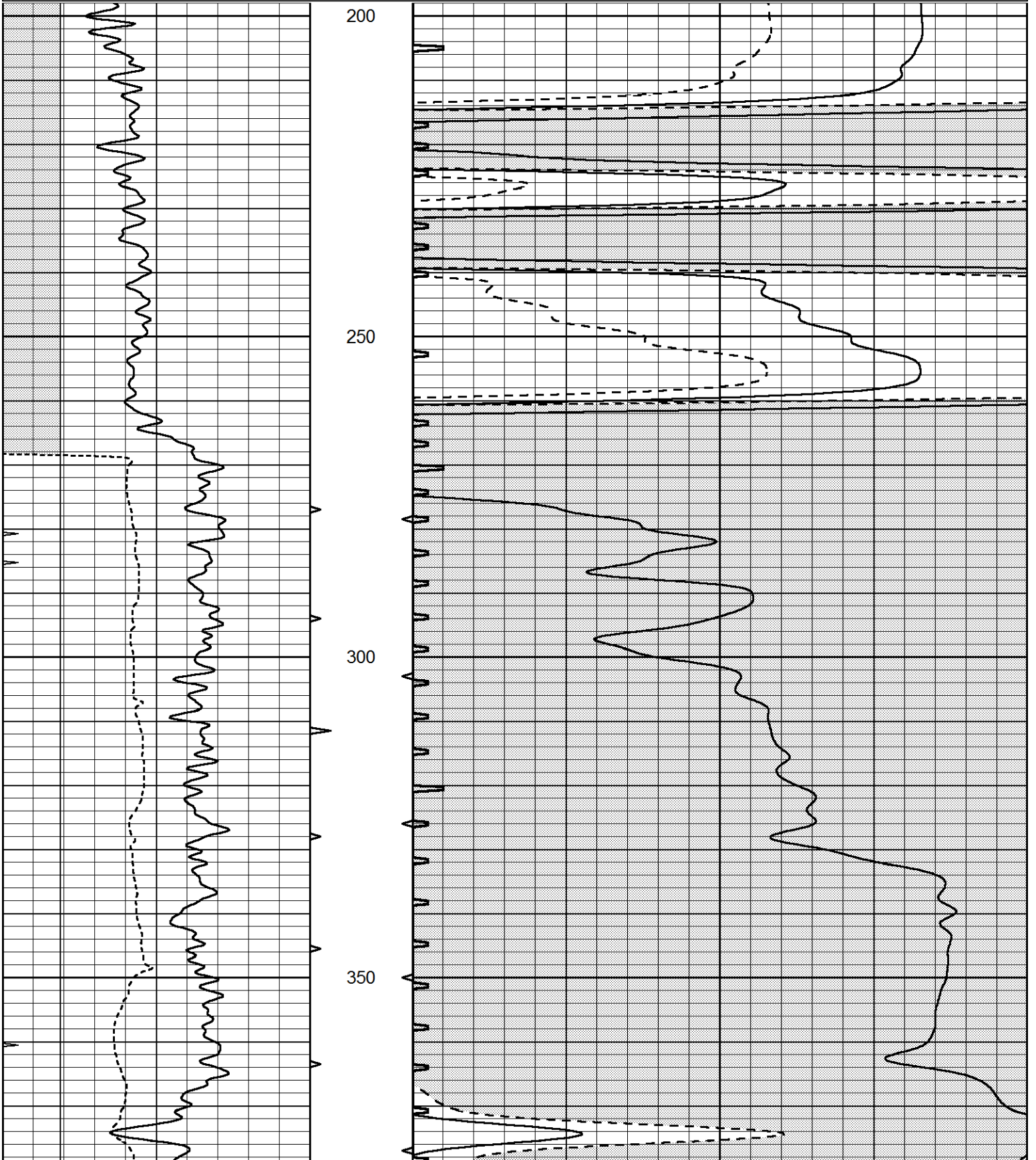
THANK YOU FOR USING ELI WIRELINE HAYS, KANSAS (785) 628-6395
DIRECTIONS
OGALLAH, KS. & I-70 EXIT, 7 1/2 N. TO "RD. D", 2E., ON EAST ACROSS FENCELINE, 1N. TO NEXT FENCELINE & E. INTO

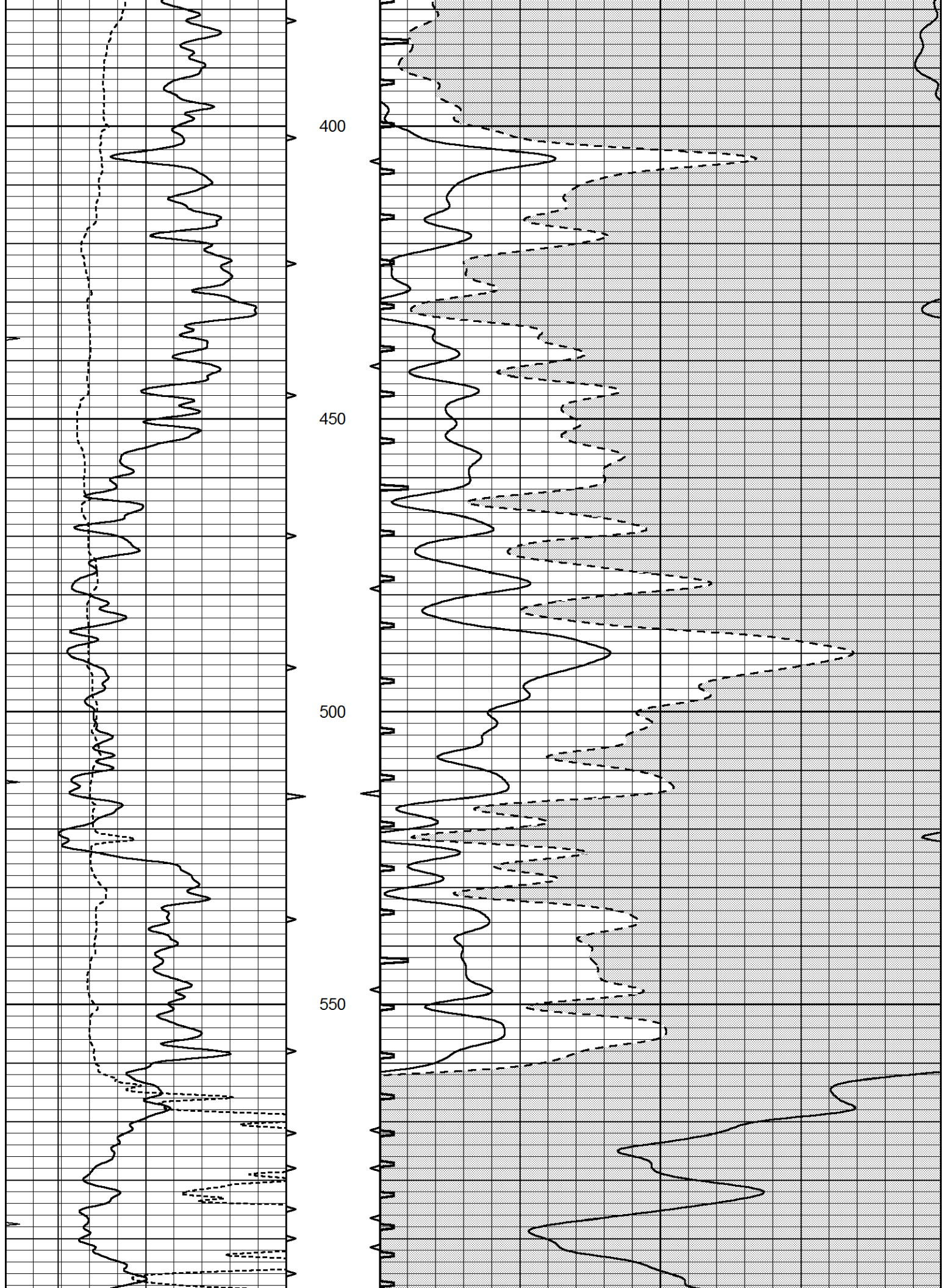


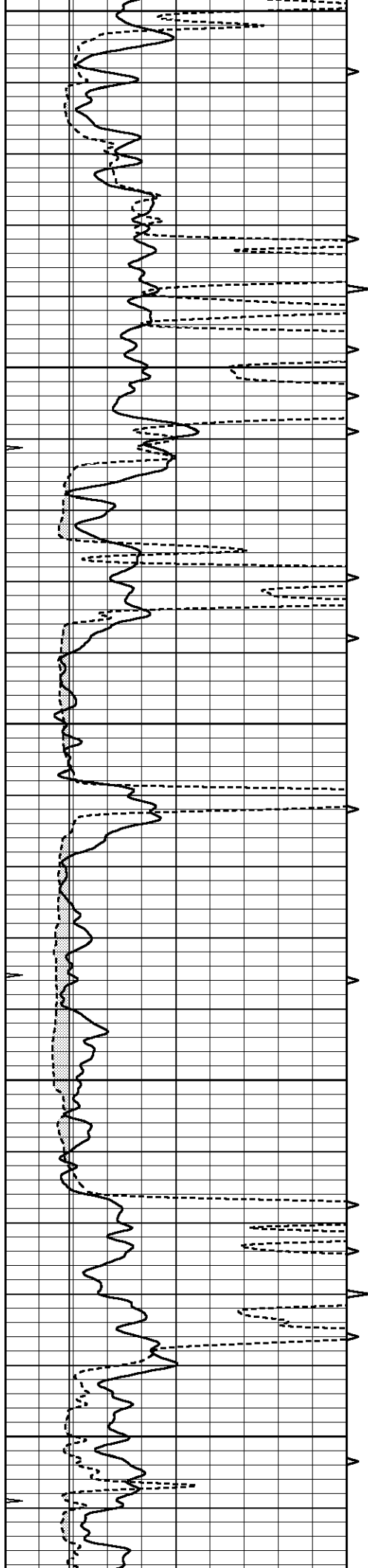
MAIN SECTION

Database File 7081pe.db
 Dataset Pathname pass7.7S
 Presentation Format slt
 Dataset Creation Fri Sep 23 22:18:26 2022
 Charted by Depth in Feet scaled 1:240

0	GAMMA RAY (GAPI)	150	ABHV	140	DELTA TIME (usec/ft)	40
6	CALIPER (in)	16	10 (ft3)	0	SONIC POROSITY (pu)	-10
0	MINMK	20	TBHV	0	ITT (msec)	20
			0 (ft3)	10		







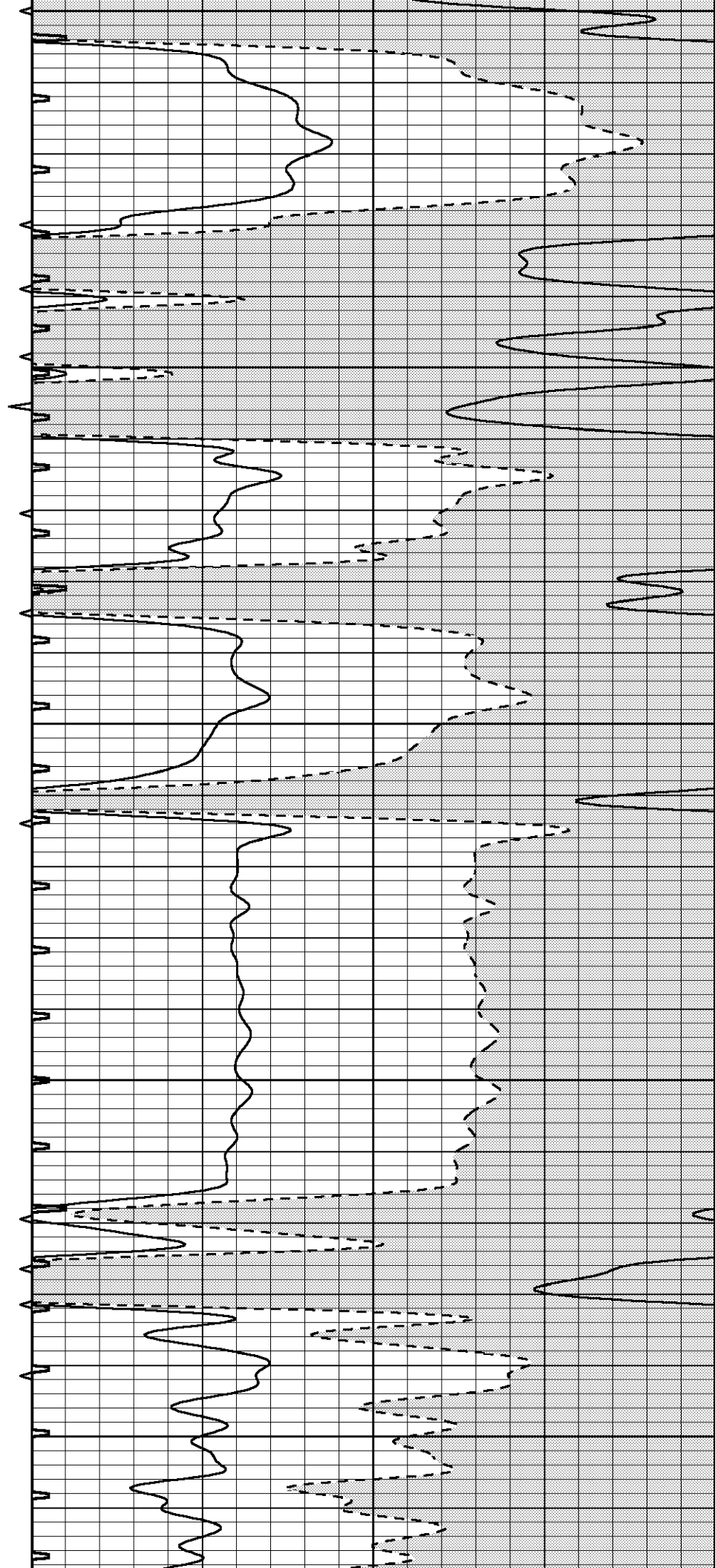
600

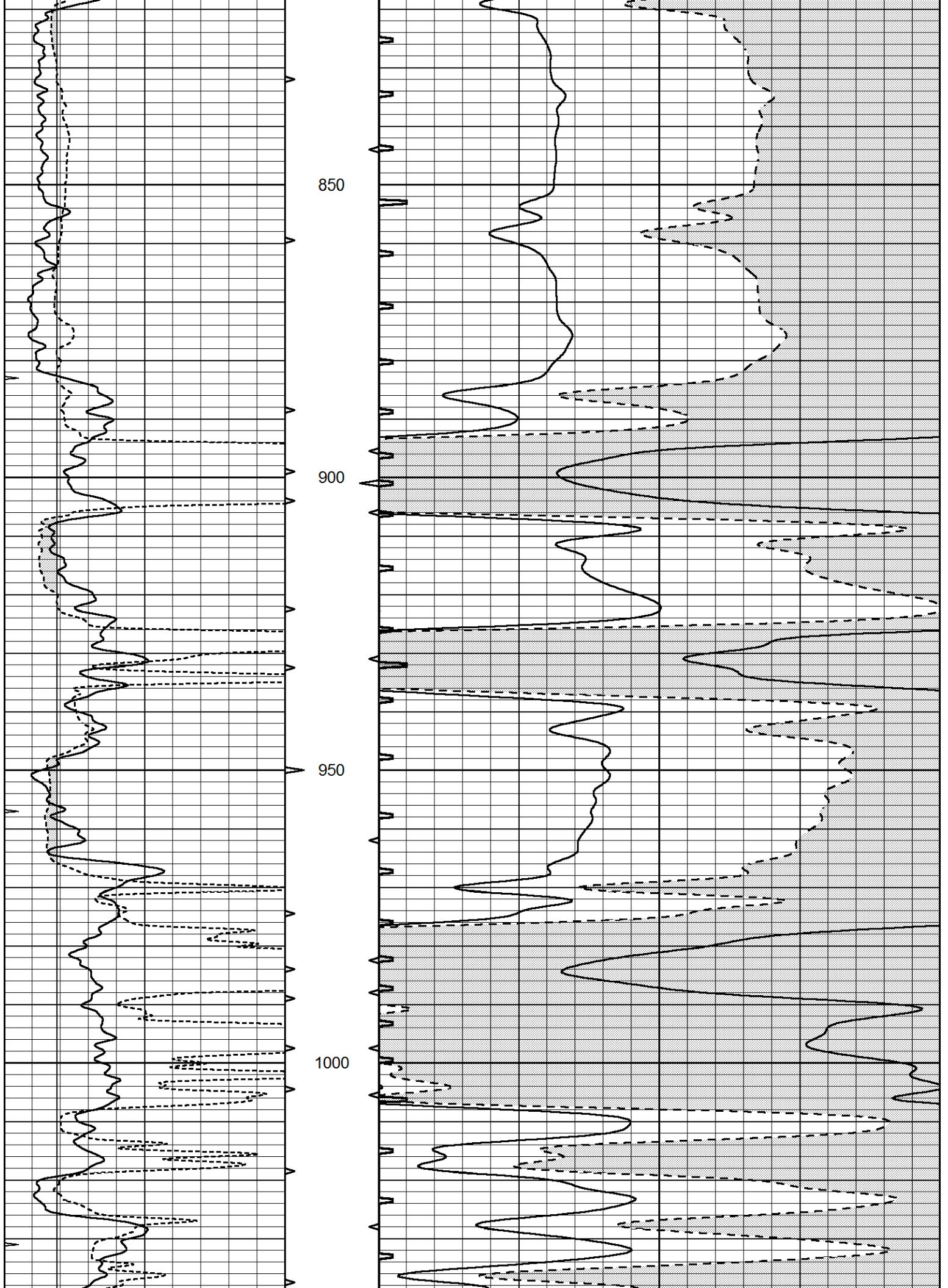
650

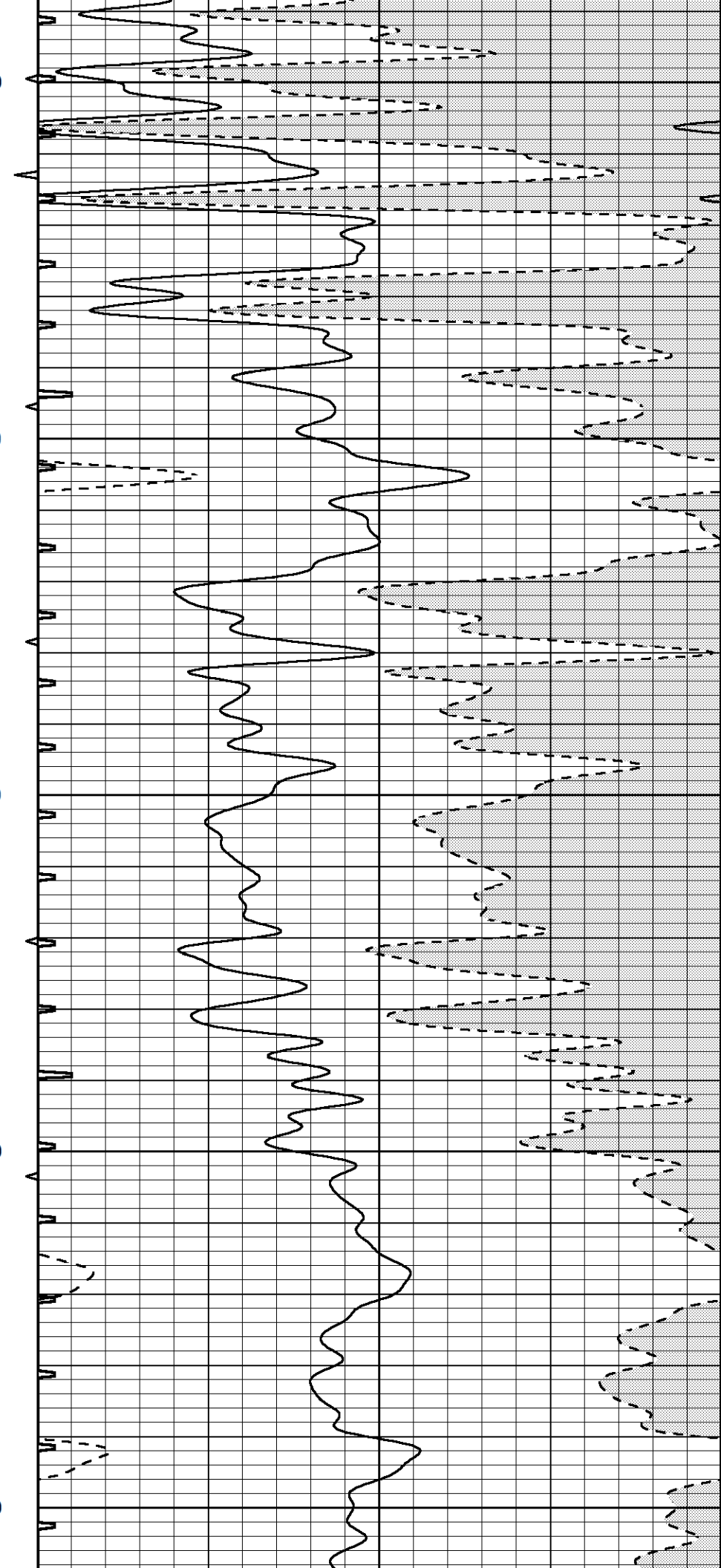
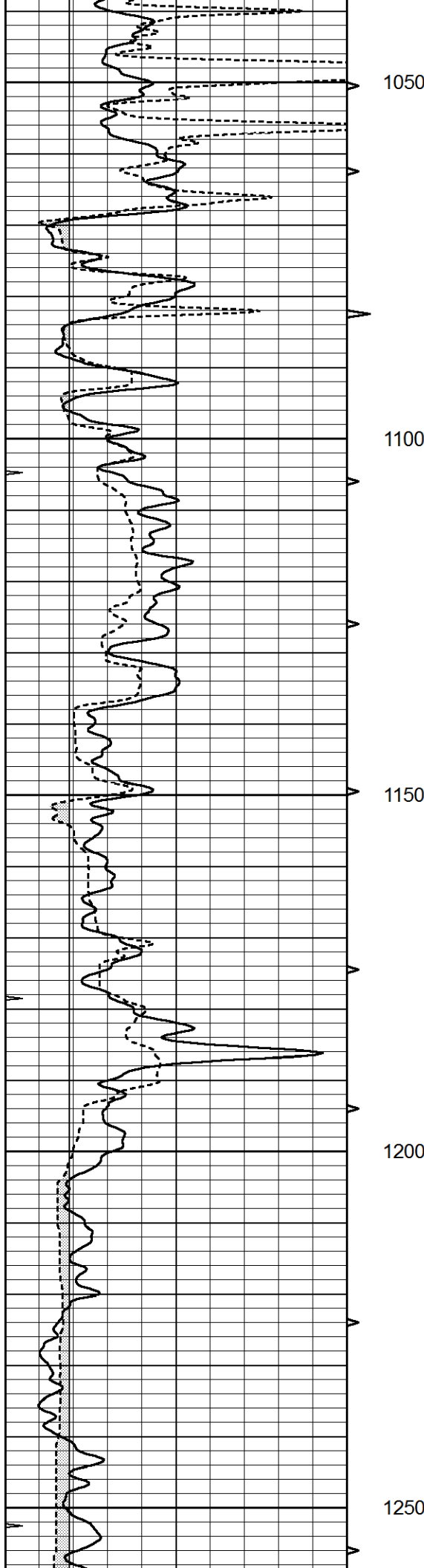
700

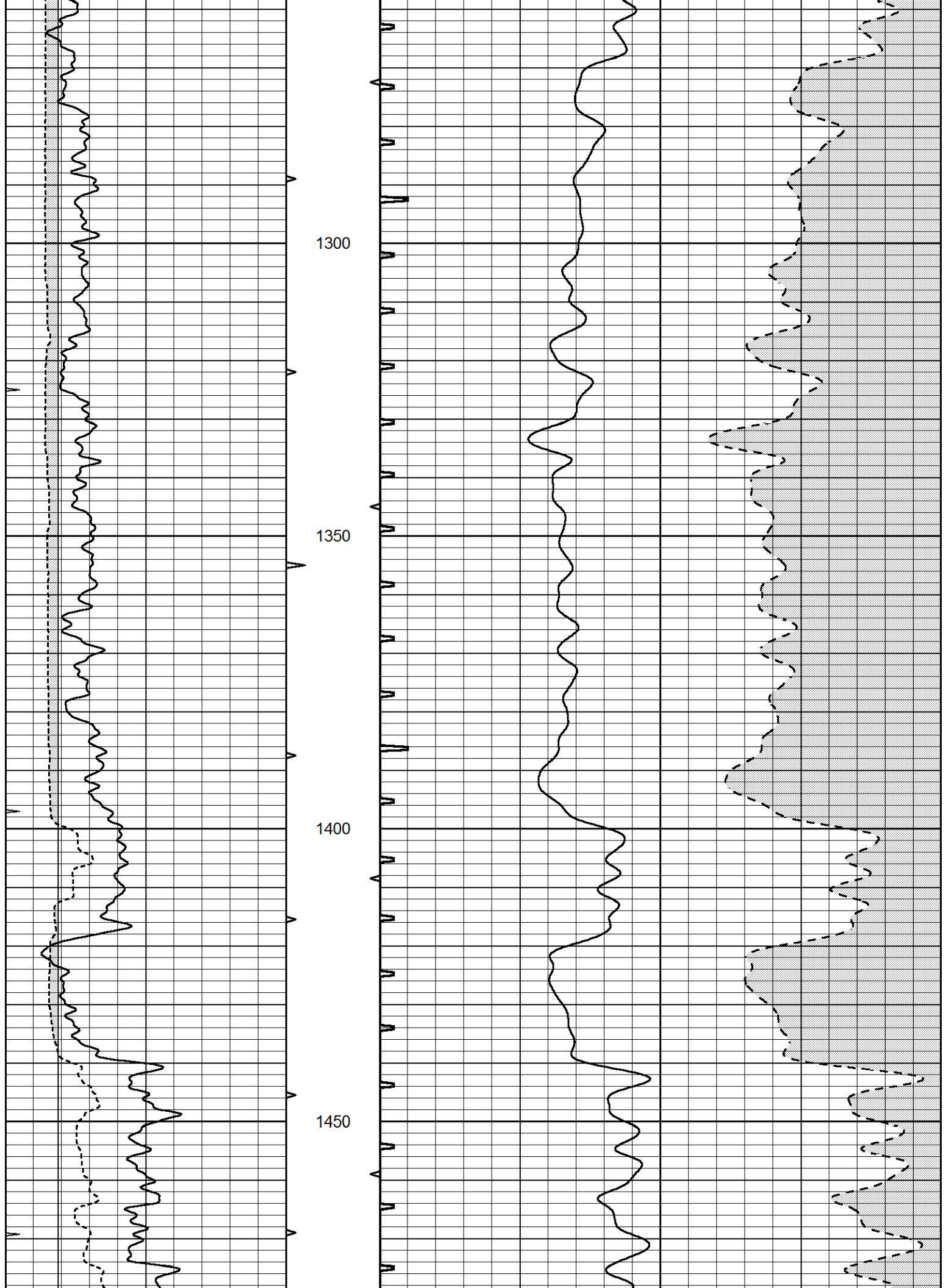
750

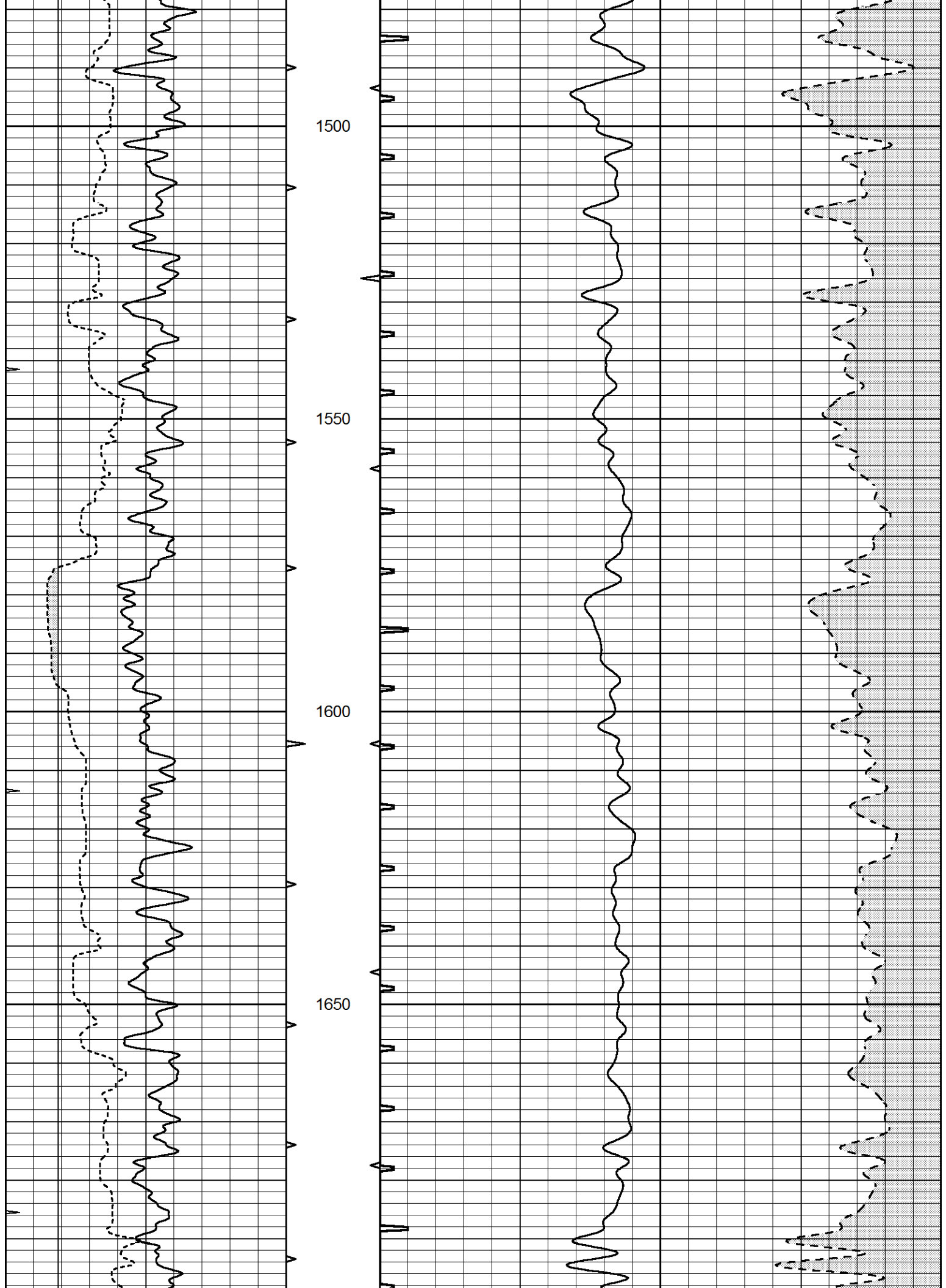
800

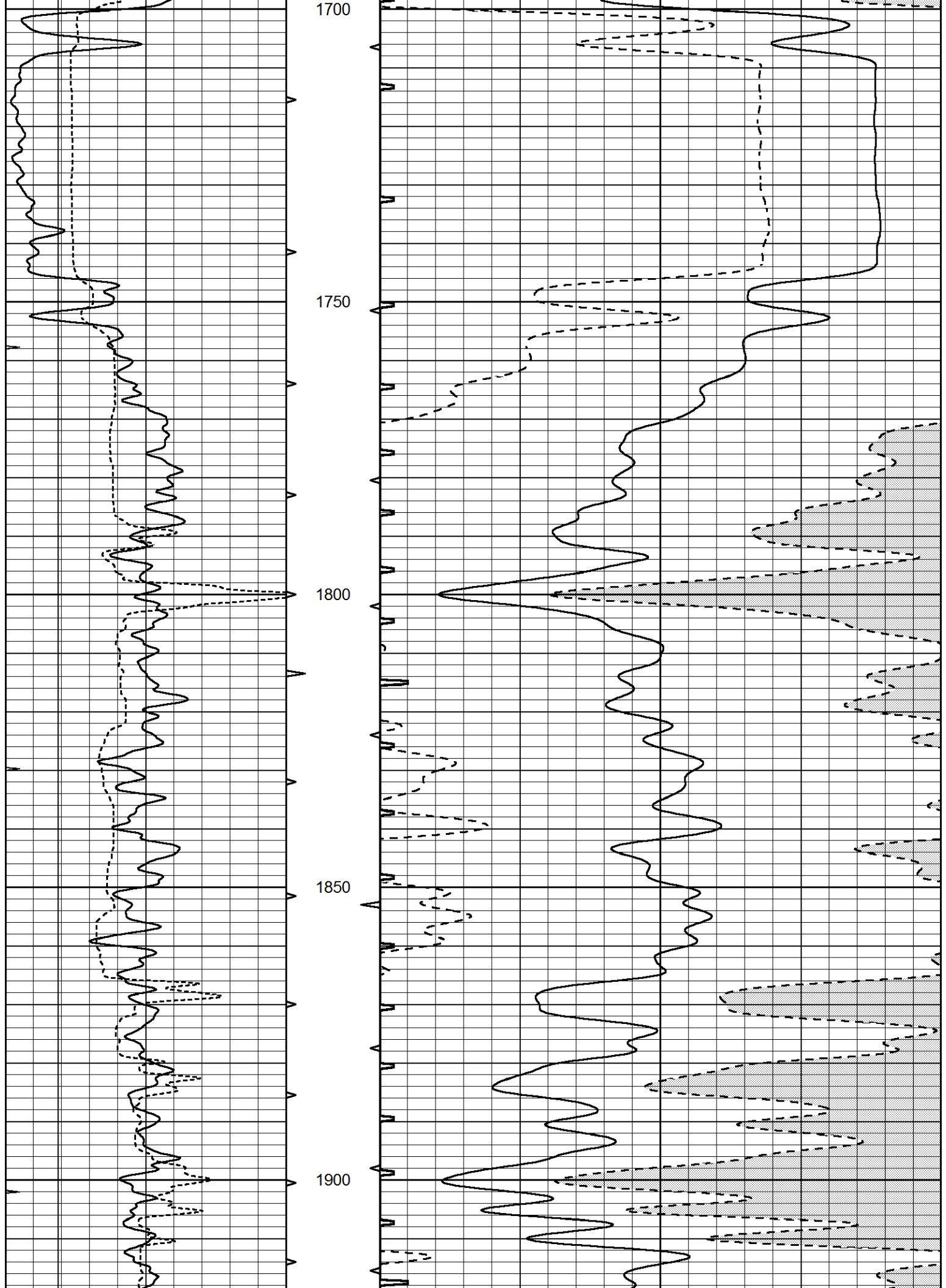


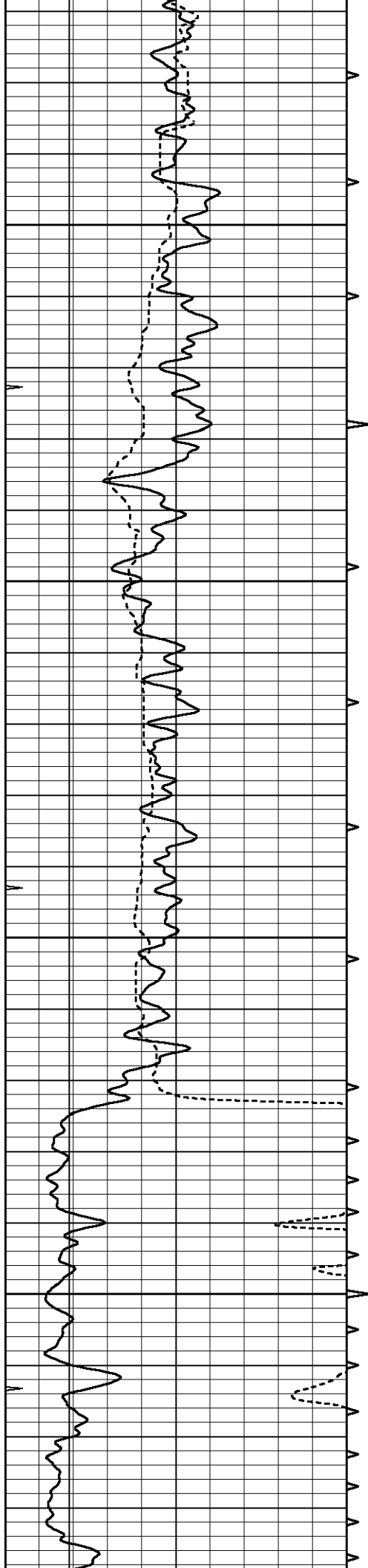










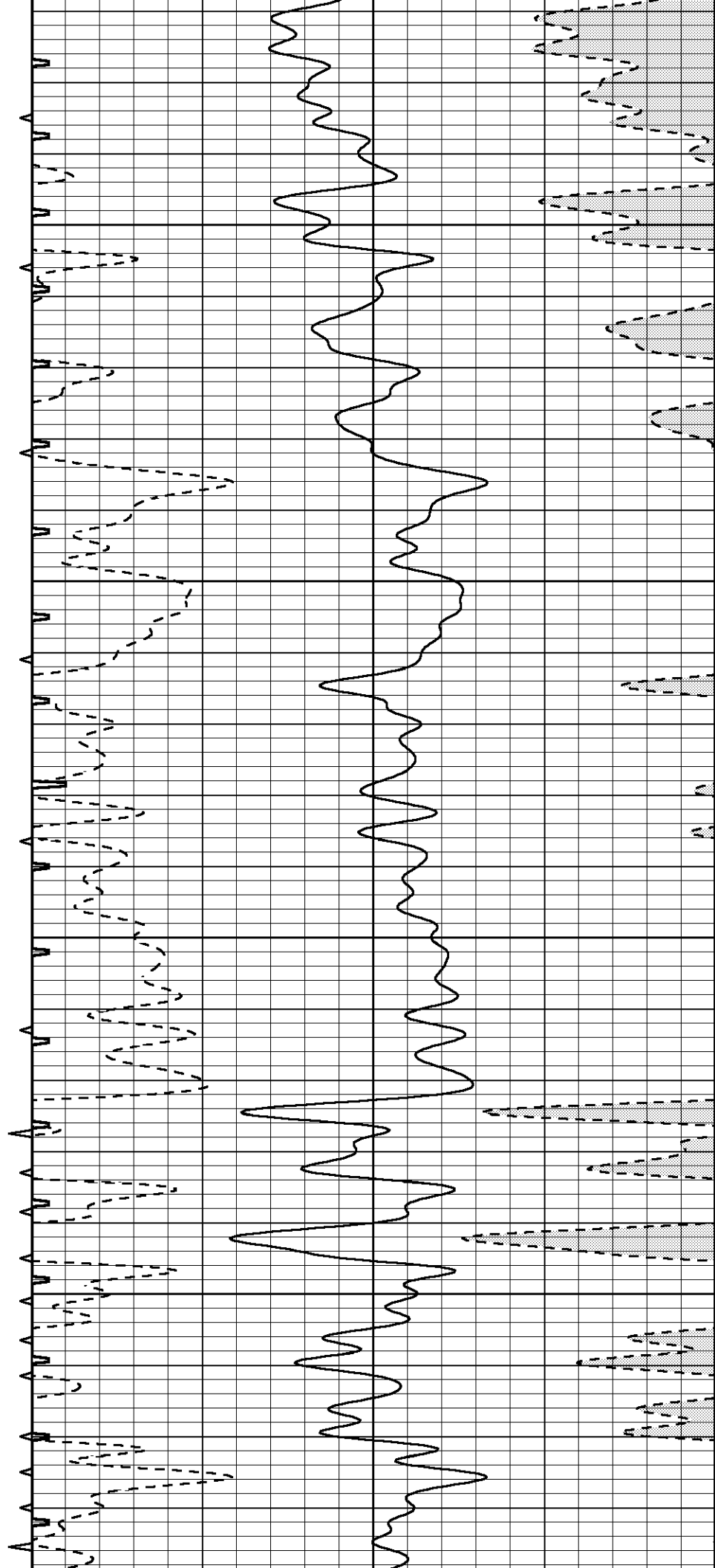


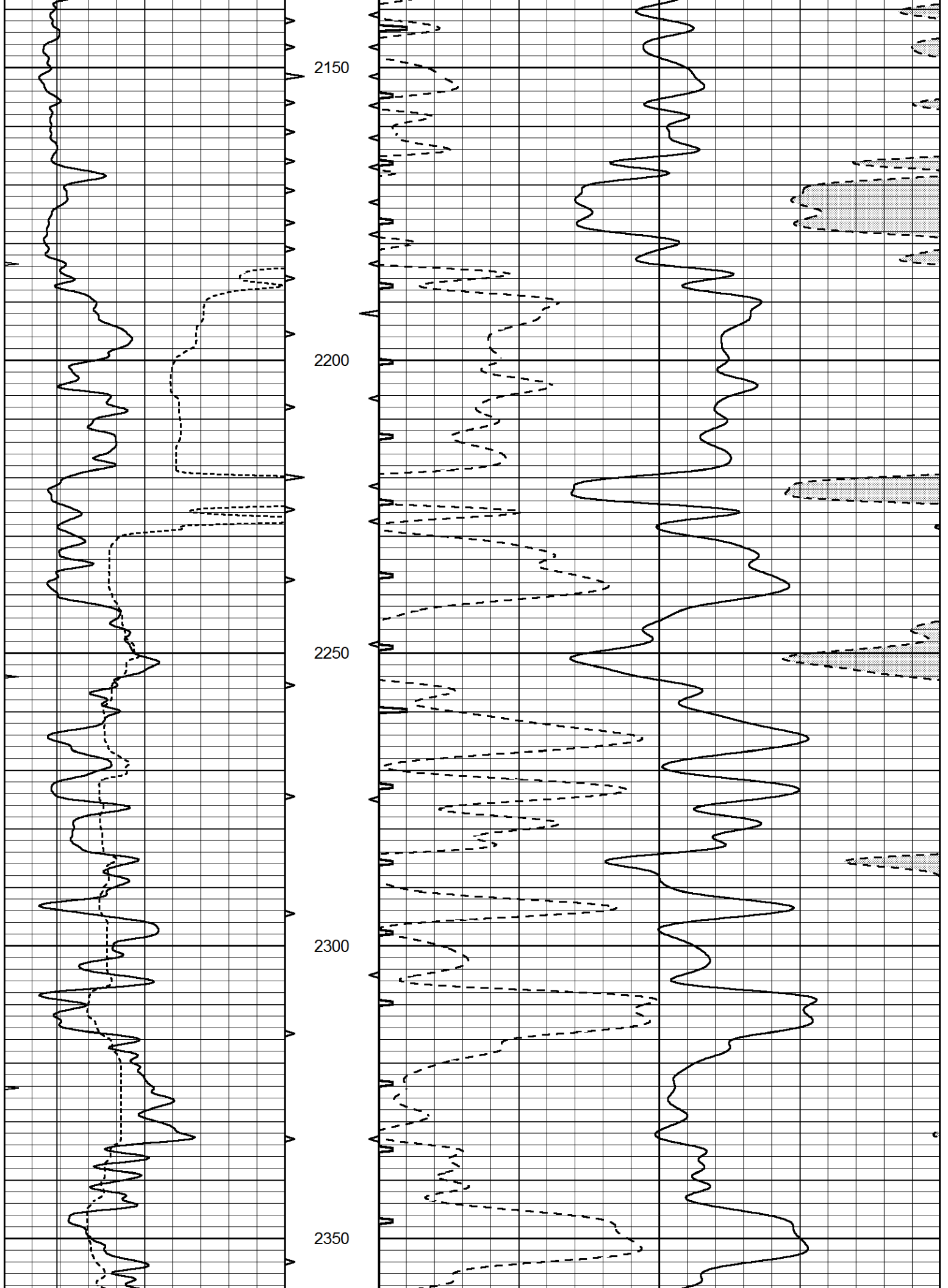
1950

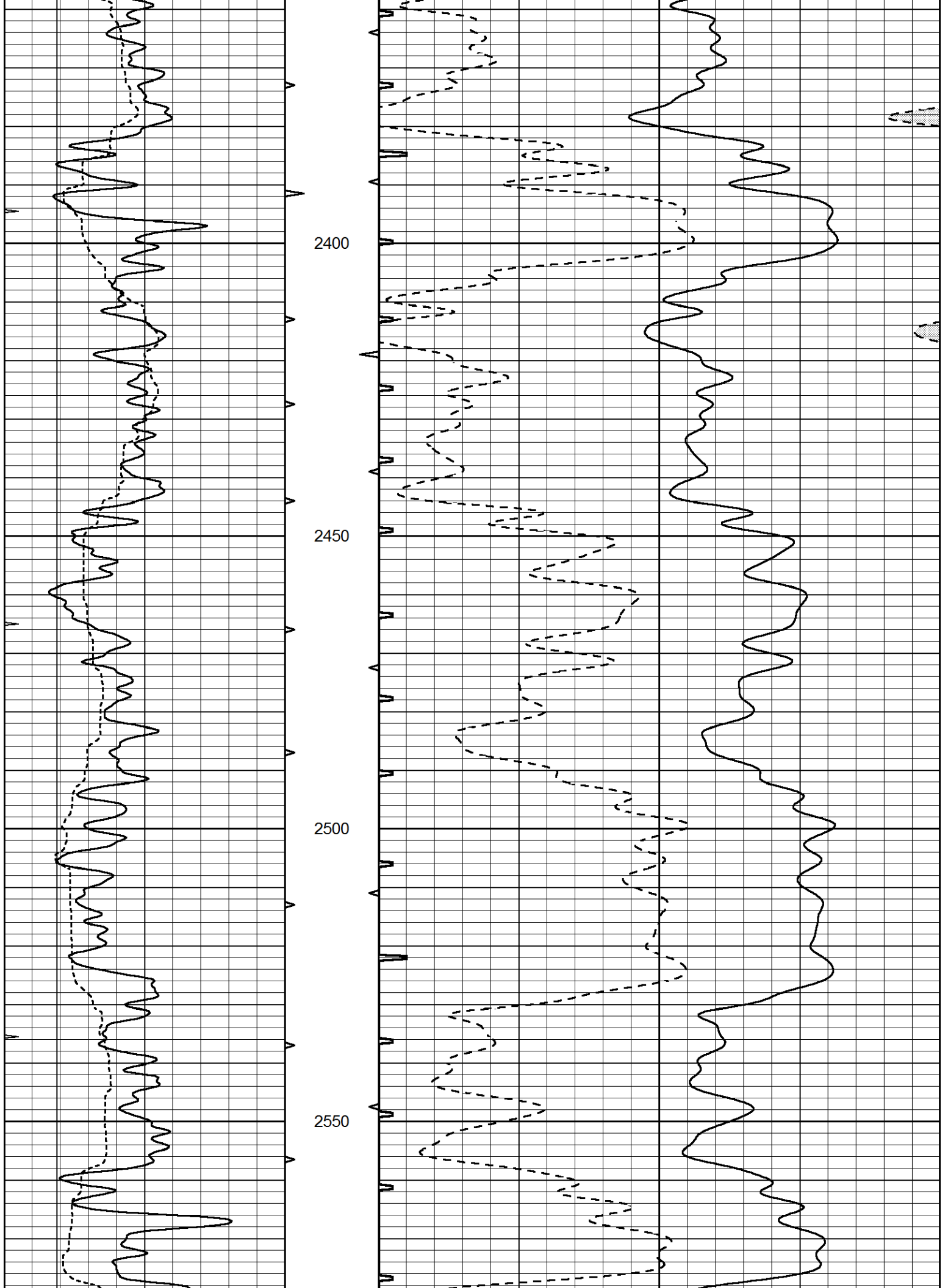
2000

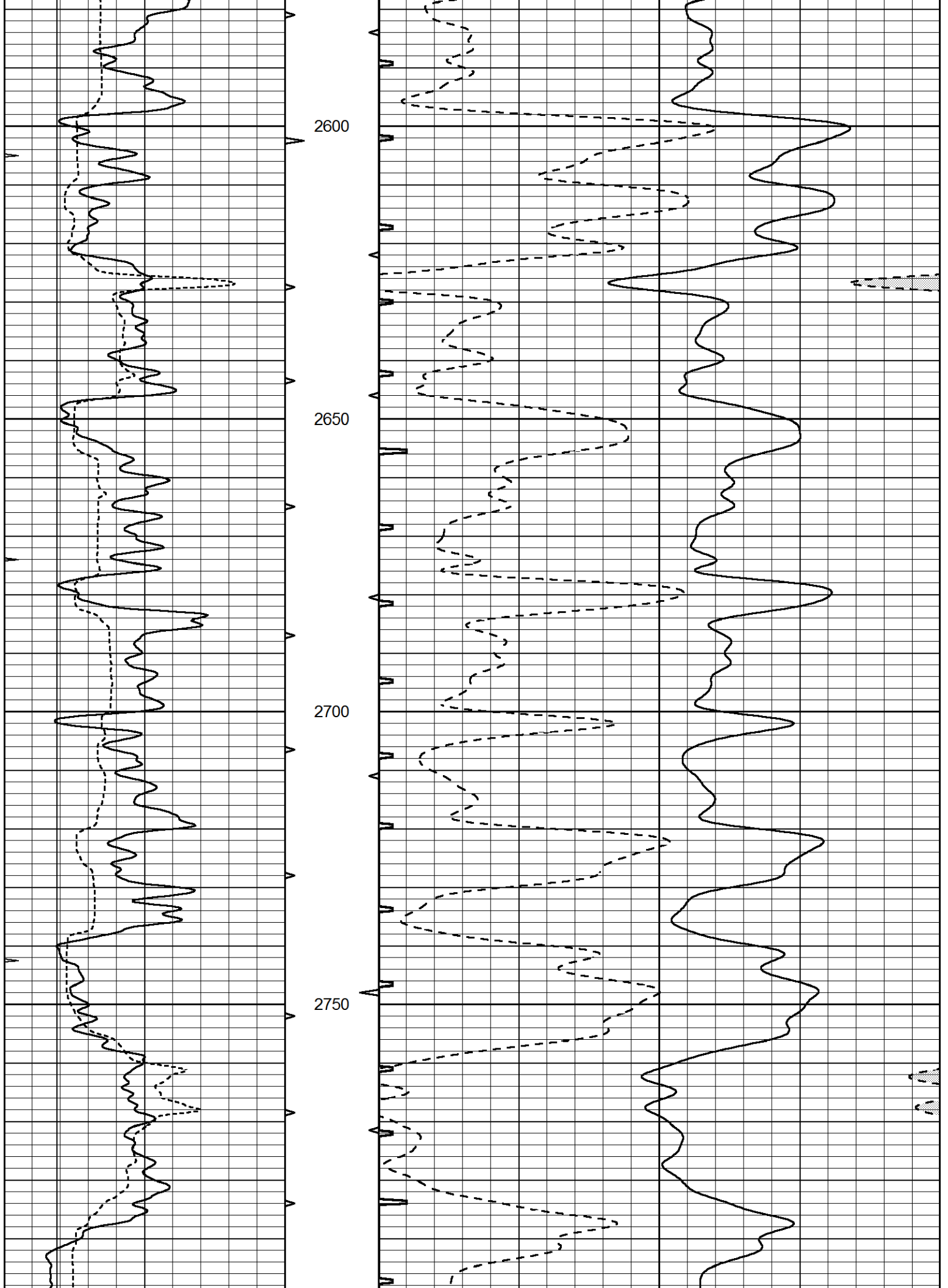
2050

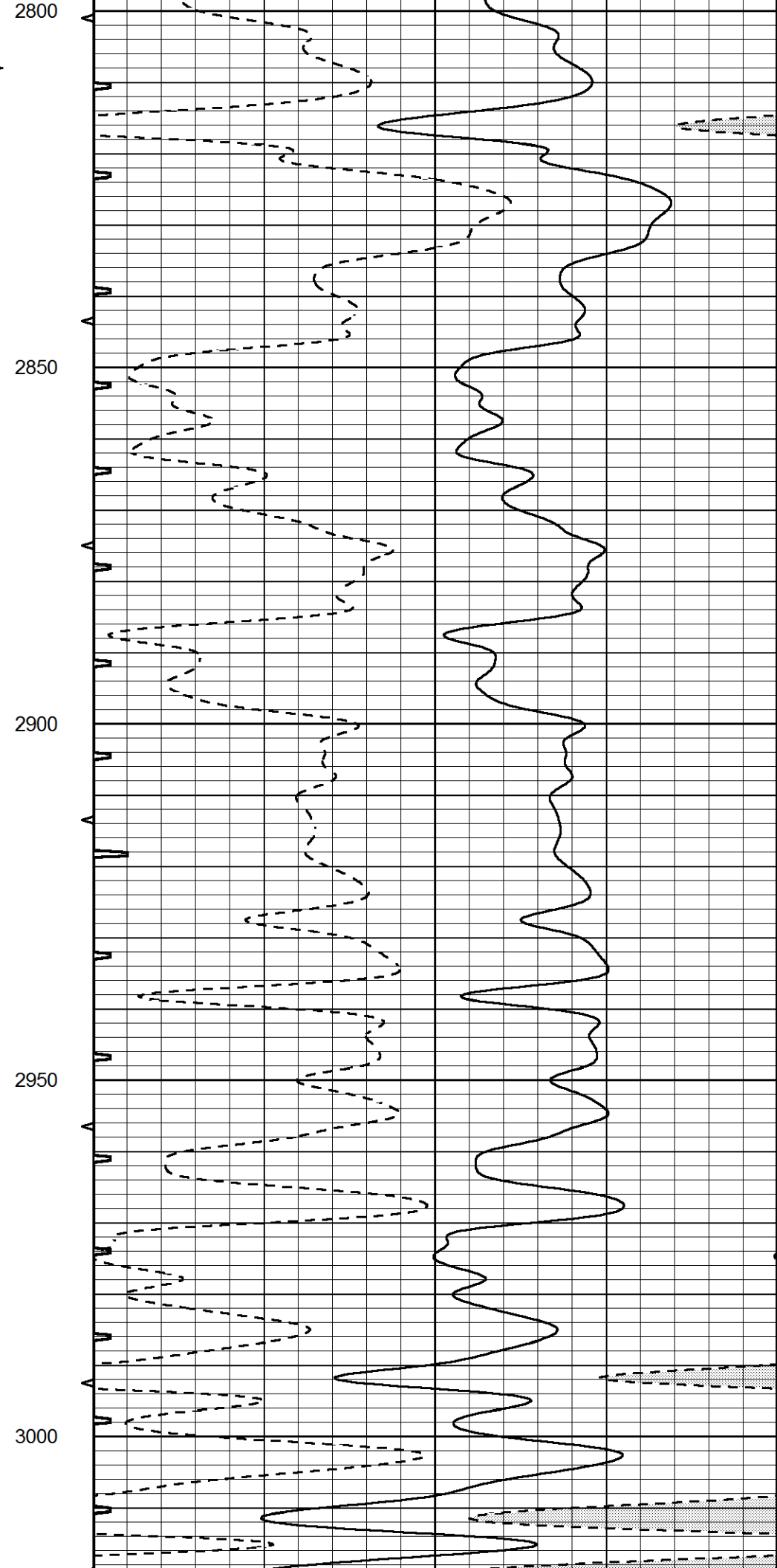
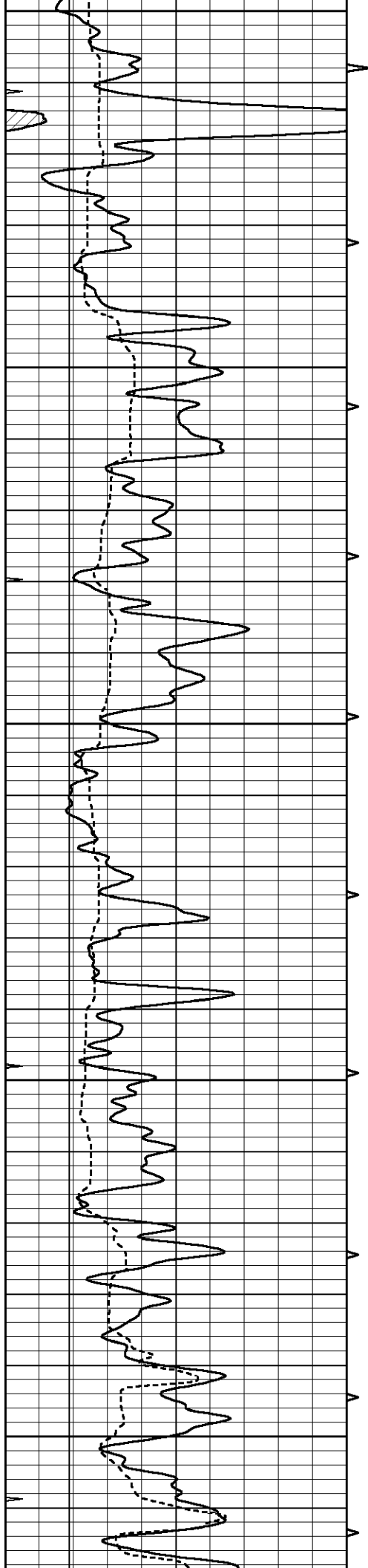
2100

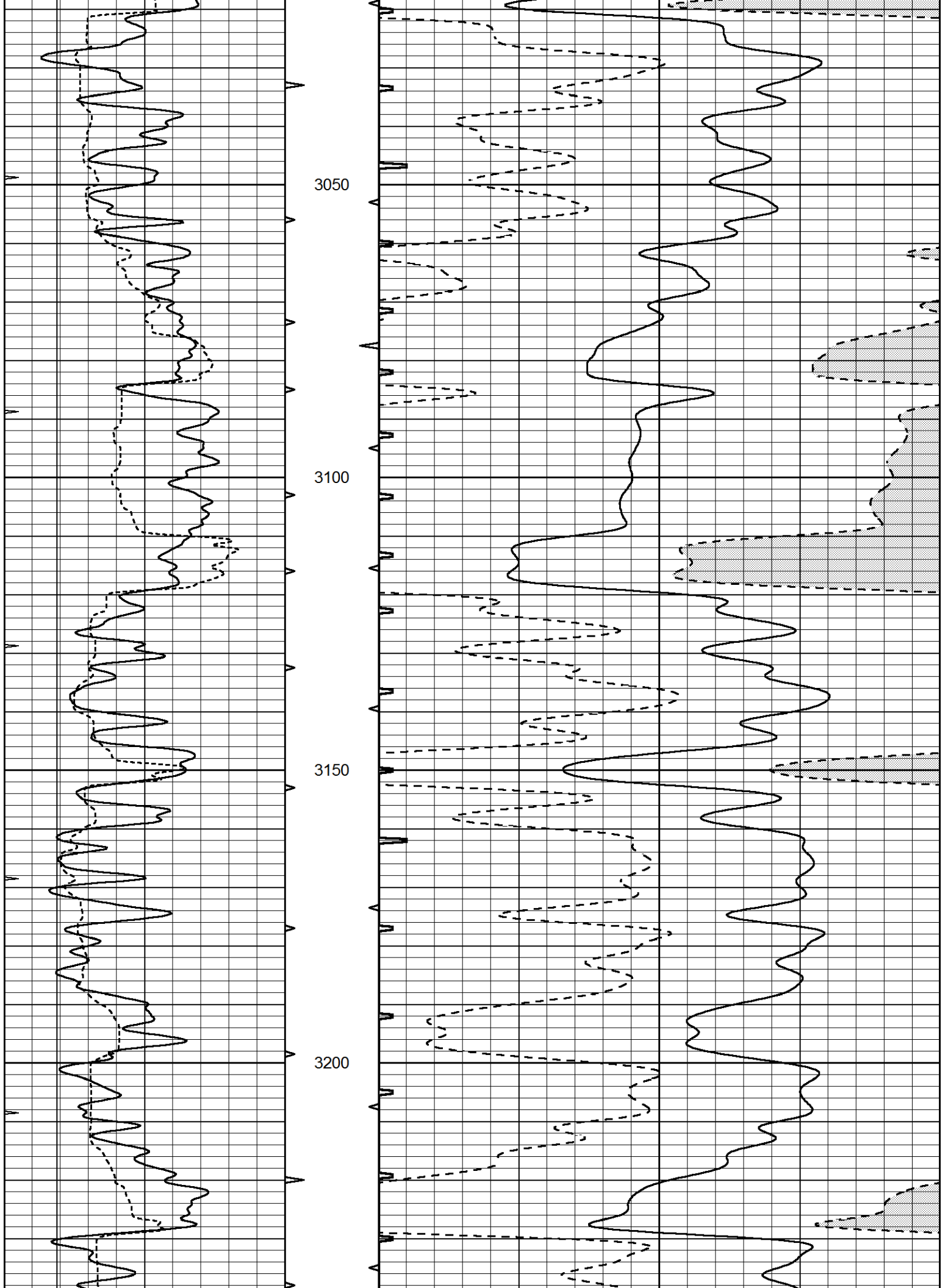


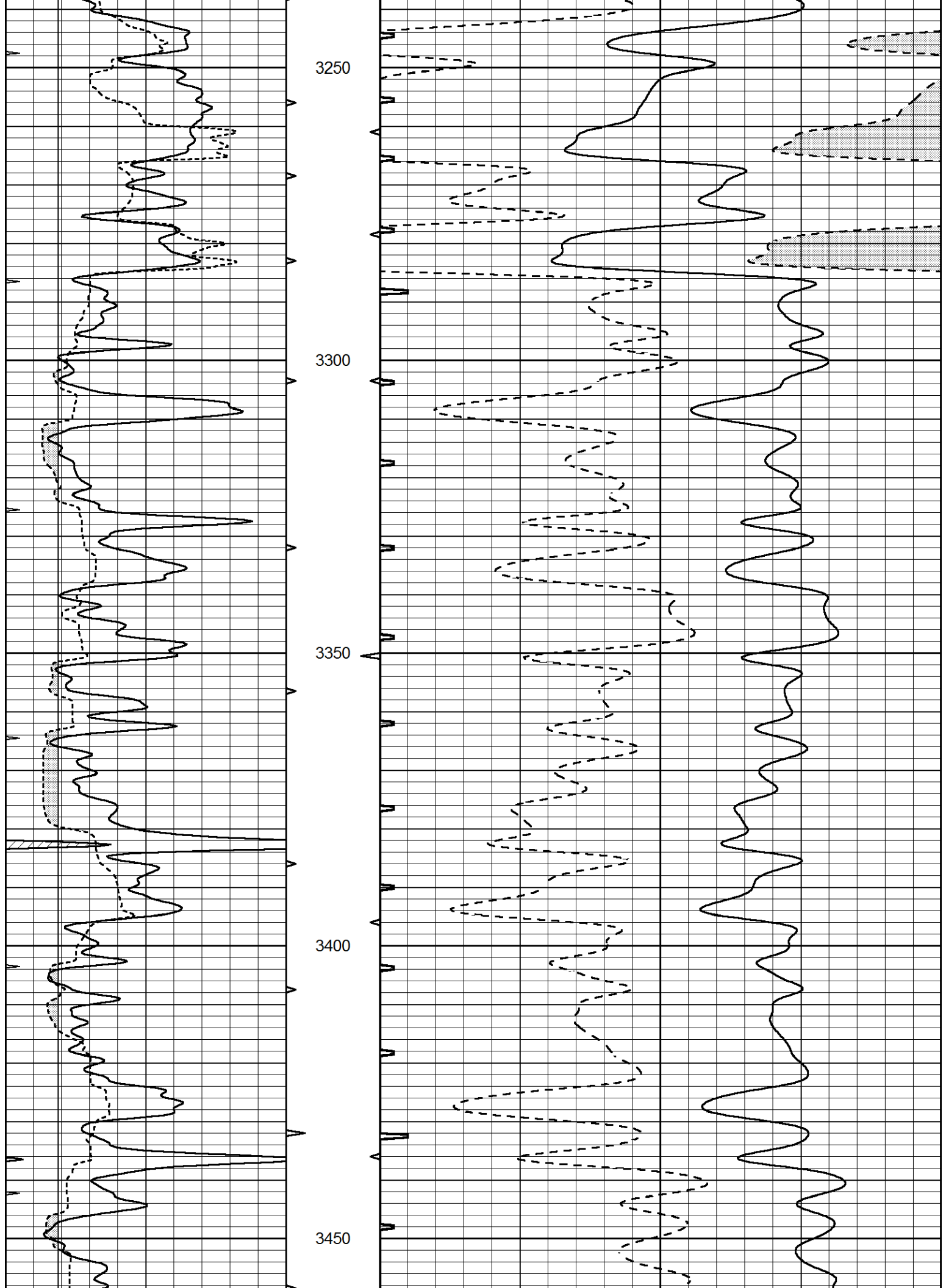


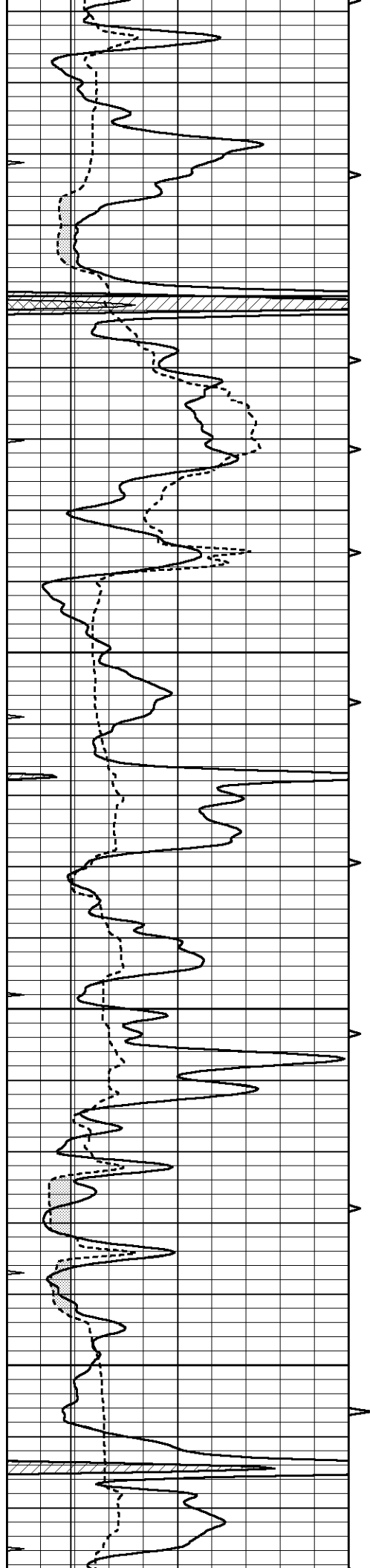










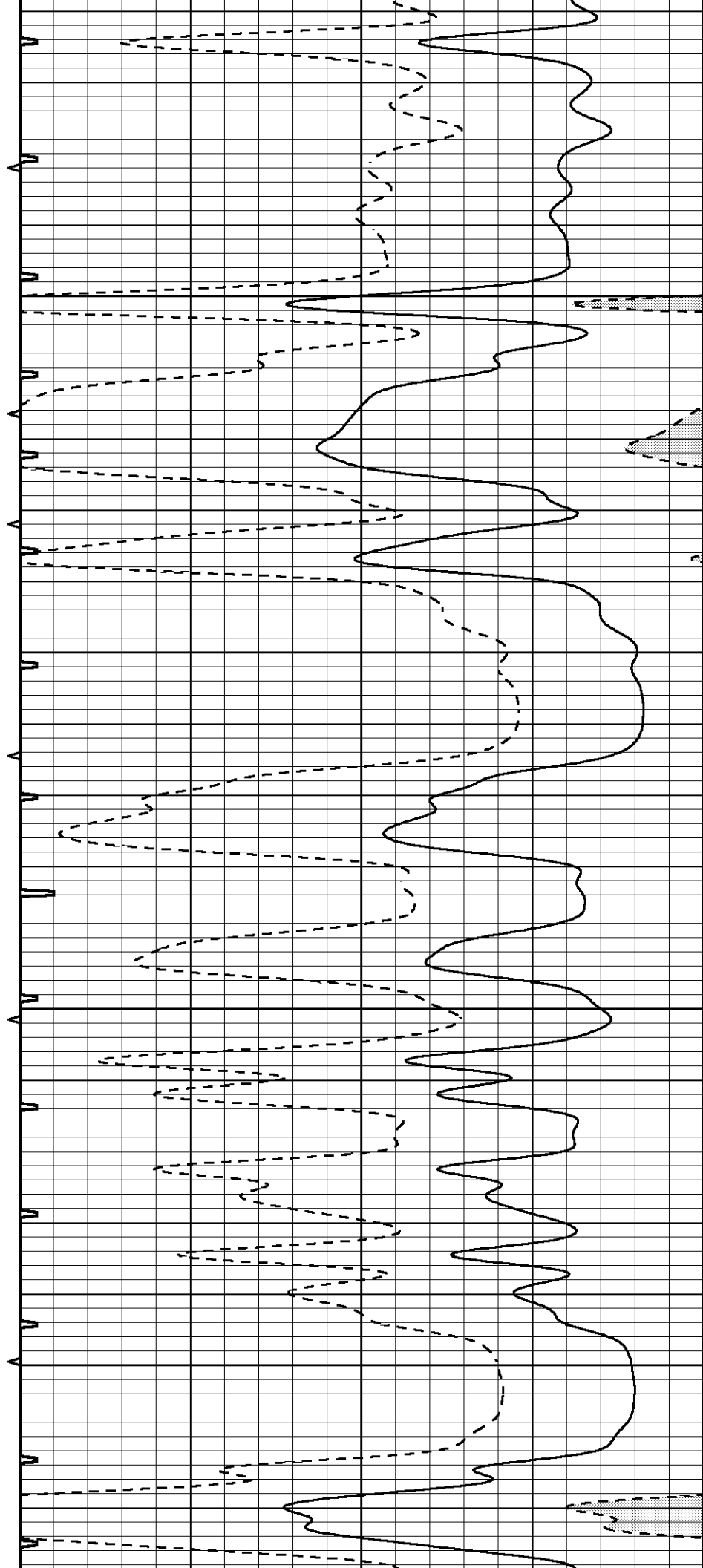


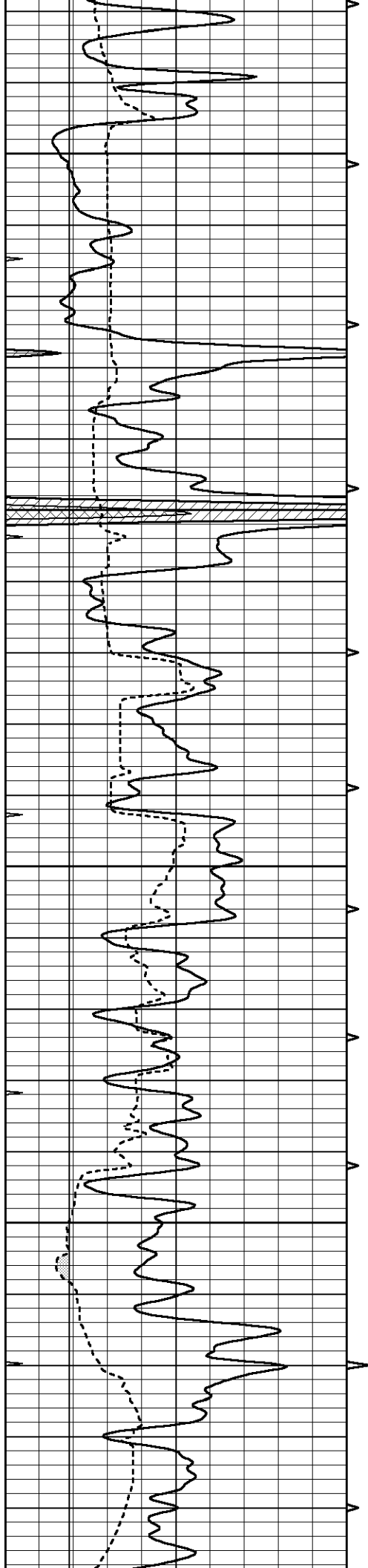
3500

3550

3600

3650



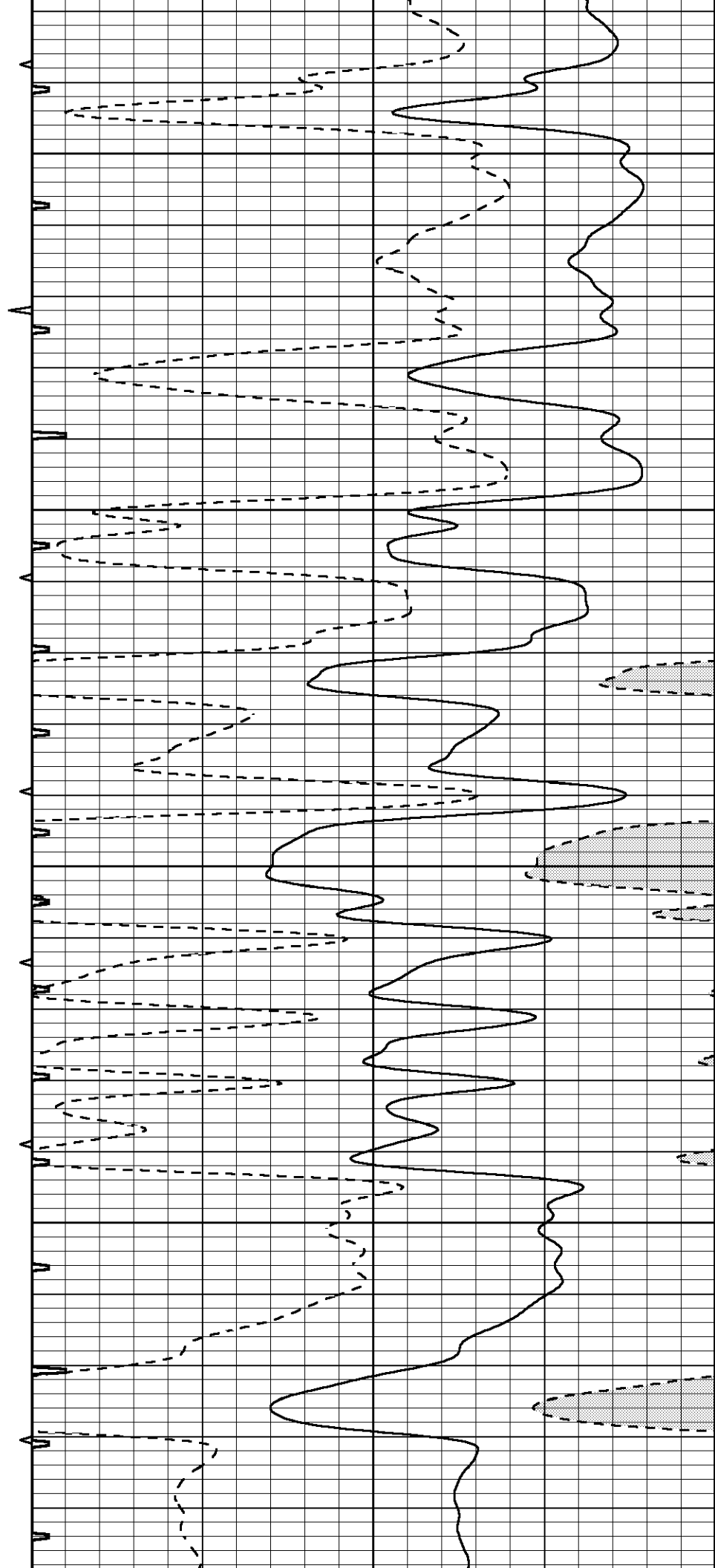


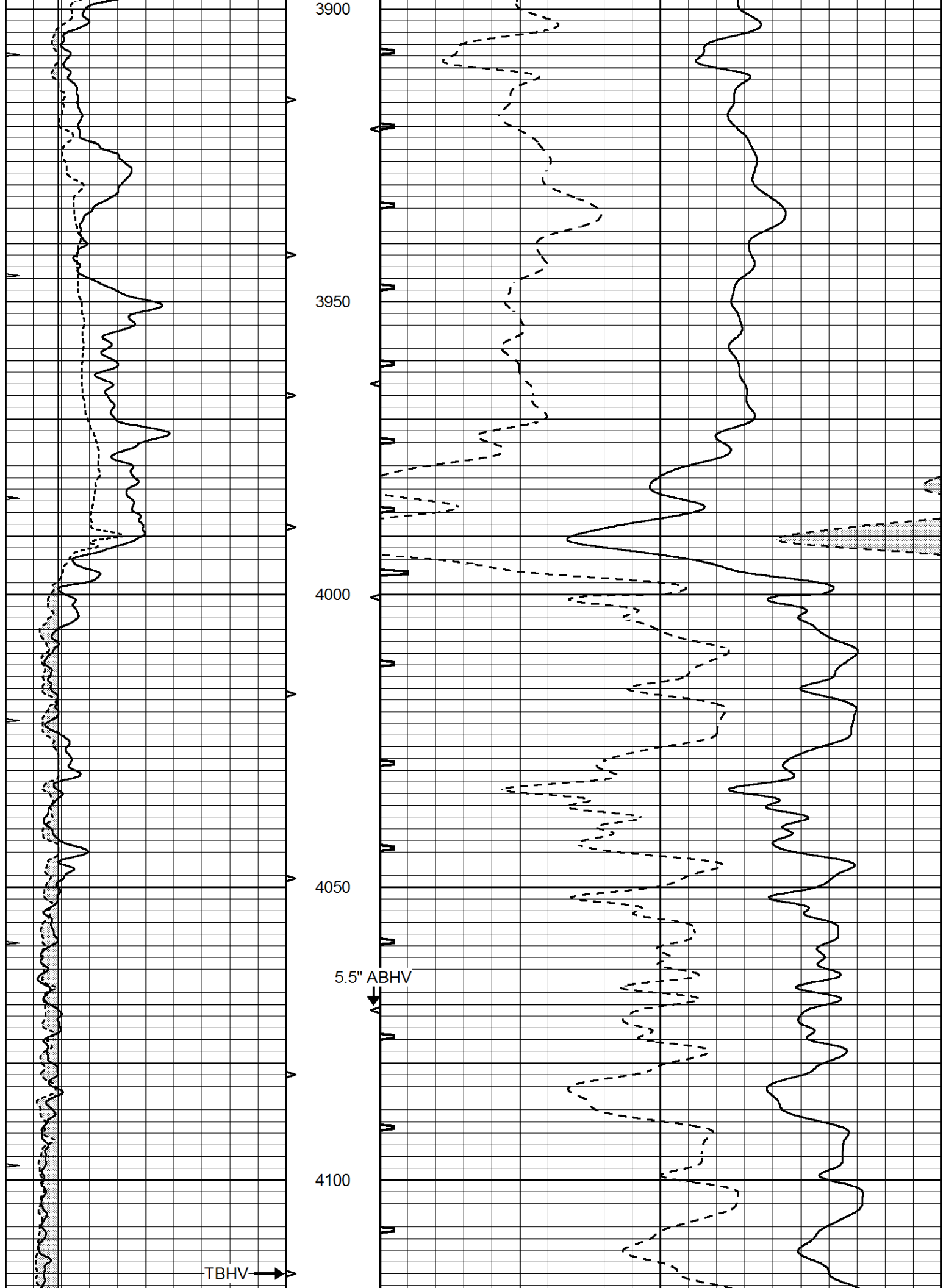
3700

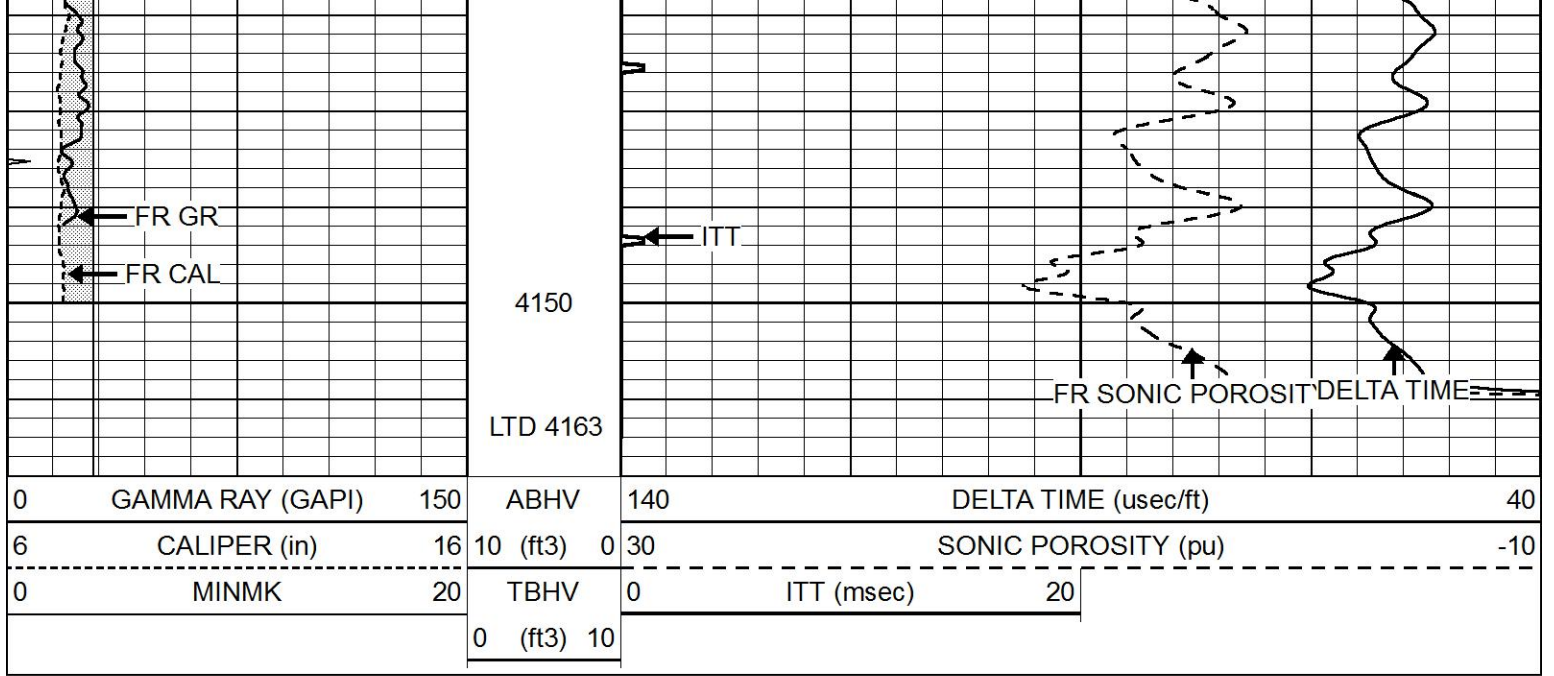
3750

3800

3850

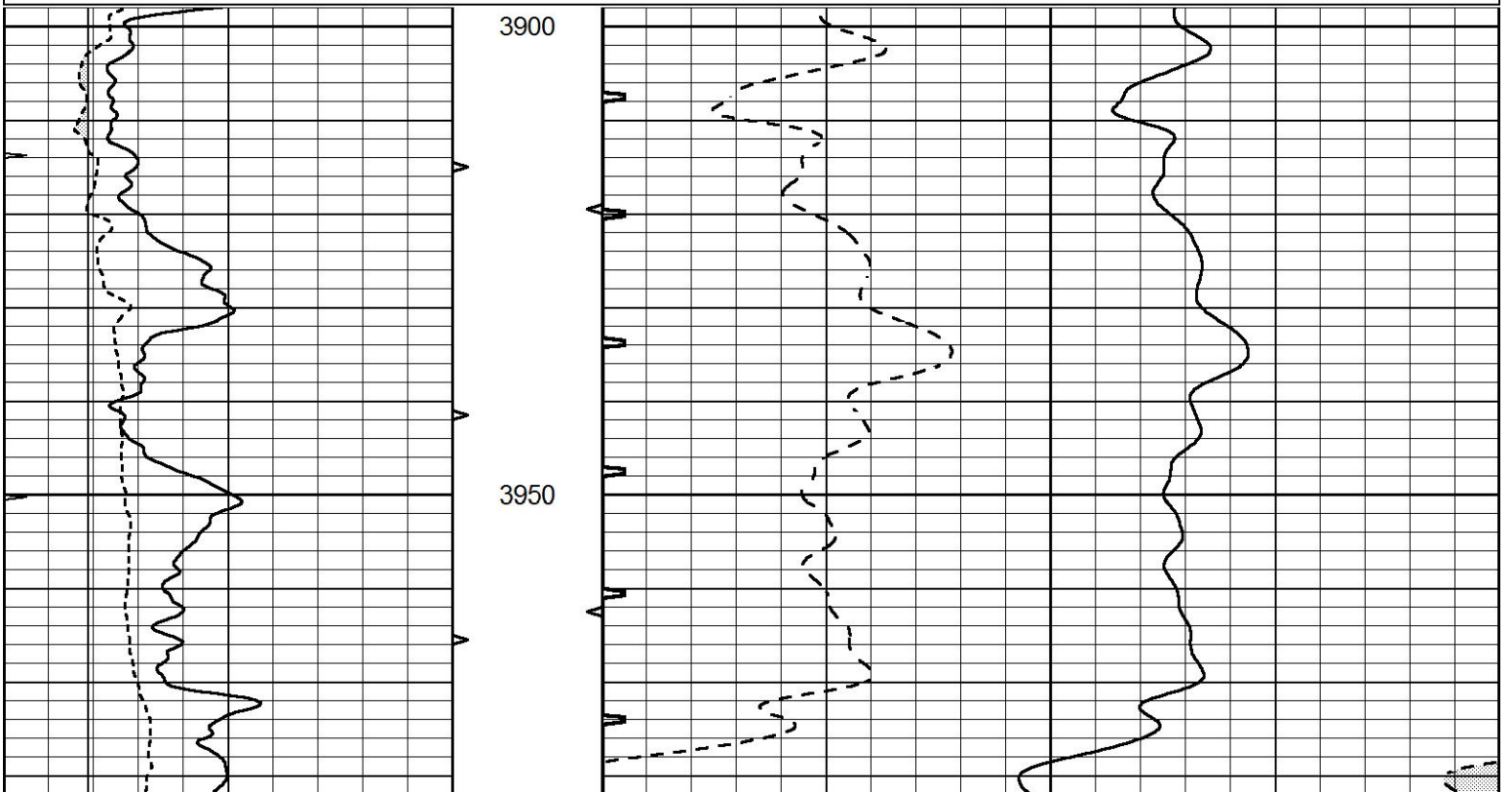
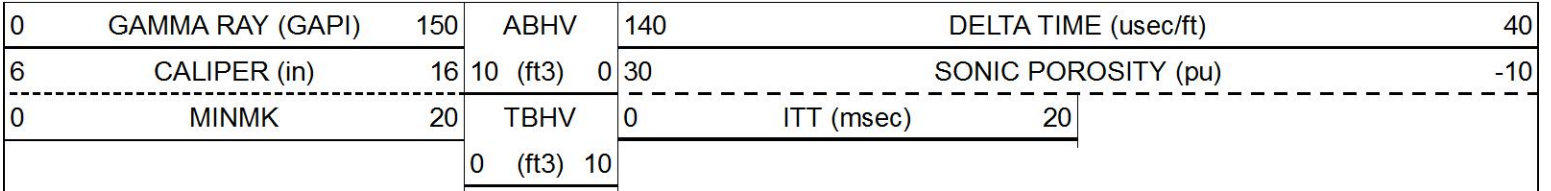


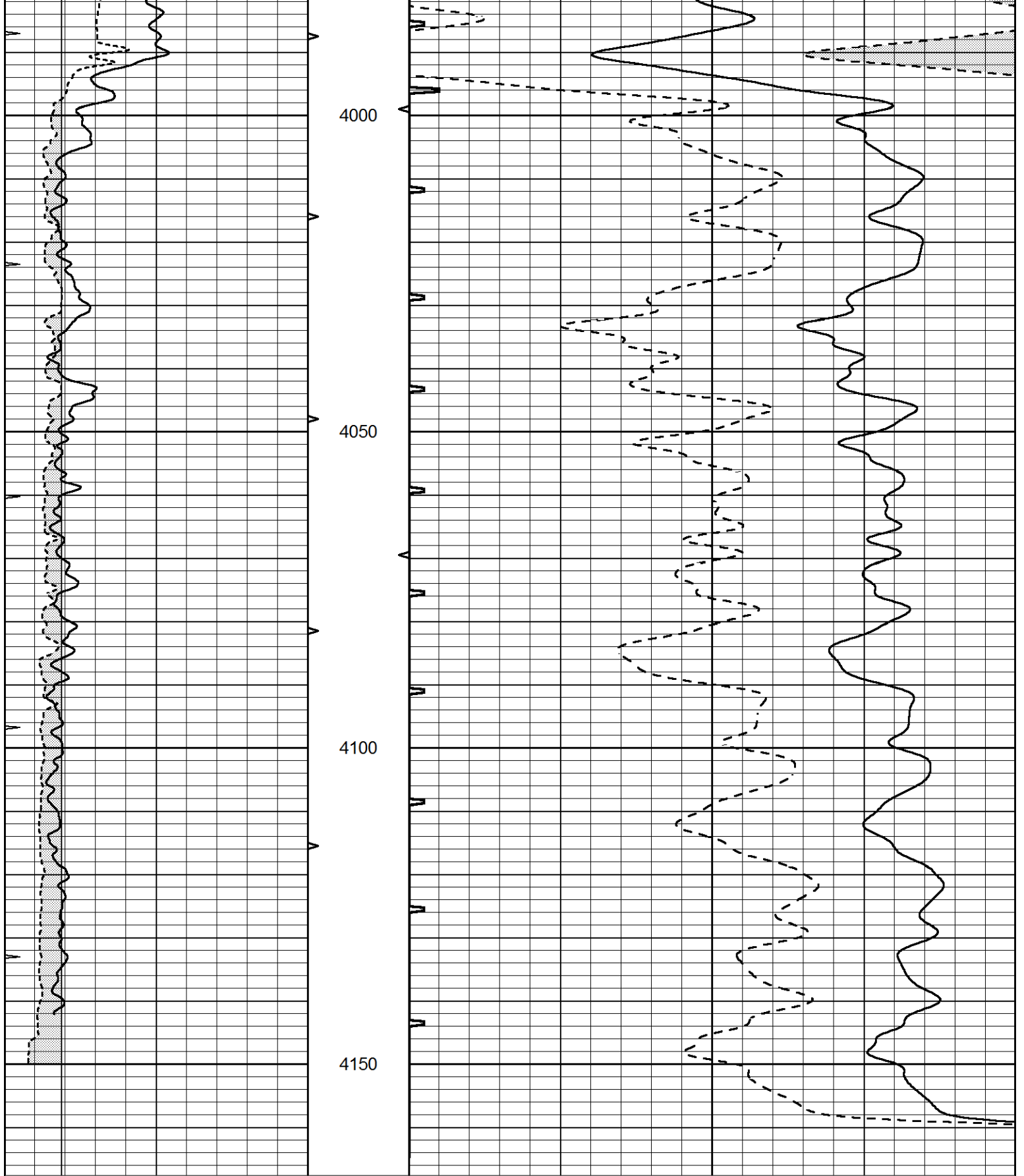




REPEAT SECTION

Database File 7081pe.db
 Dataset Pathname pass6.2
 Presentation Format slt
 Dataset Creation Fri Sep 23 21:36:30 2022
 Charted by Depth in Feet scaled 1:240





0	GAMMA RAY (GAPI)	150	ABHV	140	DELTA TIME (usec/ft)	40	
6	CALIPER (in)	16	10 (ft3)	0	30	SONIC POROSITY (pu)	-10
0	MINMK	20	TBHV	0	ITT (msec)	20	
			0 (ft3)	10			