



QUAD COMBO LOG

Company NEC OPERATING - KANSAS, LLC.

Well ELLIE #1

Field STRATTON

County TREGO State KANSAS

Company NEC OPERATING - KANSAS, LLC.  
Well ELLIE #1  
Field STRATTON  
County TREGO  
State KANSAS

Location: 2310' FSL & 1700' FWL  
E/2 - NW - NE - SW  
API #: 15-195-23144-0000  
SEC 18 TWP 11S RGE 21W  
Permanent Datum GROUND LEVEL Elevation 2231  
Log Measured From KELLY BUSHING 7' A.G.L.  
Drilling Measured From KELLY BUSHING  
Other Services  
CDL/CNL/PE  
DIL/MEL/SON  
Elevation  
K.B. 2238  
D.F. 2236  
G.L. 2231

|                              |               |
|------------------------------|---------------|
| Date                         | 9/23/22       |
| Run Number                   | ONE           |
| Depth Driller                | 4100          |
| Depth Logger                 | 4163          |
| Bottom Logged Interval       | 4161          |
| Top Log Interval             | 1700          |
| Casing Driller               | 8 5/8"@254'   |
| Casing Logger                | 264           |
| Bit Size                     | 7 7/8"        |
| Type Fluid in Hole           | CHEMICAL MUD  |
| Density / Viscosity          | 9.3/58        |
| pH / Fluid Loss              | 10.0/6.0      |
| Source of Sample             | FLOWLINE      |
| Rm @ Meas. Temp              | .850@76F      |
| Rmf @ Meas. Temp             | .638@76F      |
| Rmc @ Meas. Temp             | 1.02@76F      |
| Source of Rmf / Rmc          | MEASUREMENT   |
| Rm @ BHT                     | .552@117F     |
| Time Circulation Stopped     | 4.5 HOURS     |
| Time Logger on Bottom        | 8:30 P.M.     |
| Maximum Recorded Temperature | 117F          |
| Equipment Number             | 922339        |
| Location                     | HAYS, KANSAS  |
| Recorded By                  | JEFF LUEBBERS |
| Witnessed By                 | SEAN DEENIHAN |

<<< Fold Here >>>

All interpretations are opinions based on inferences from electrical or other measurements and we cannot and do not guarantee the accuracy or correctness of any interpretation, and we shall not, except in the case of gross or willful negligence on our part, be liable or responsible for any loss, costs, damages, or expenses incurred or sustained by anyone resulting from any interpretation made by any of our officers, agents or employees. These interpretations are also subject to our general terms and conditions set out in our current Price Schedule.

15-195-23144-0000 Comments

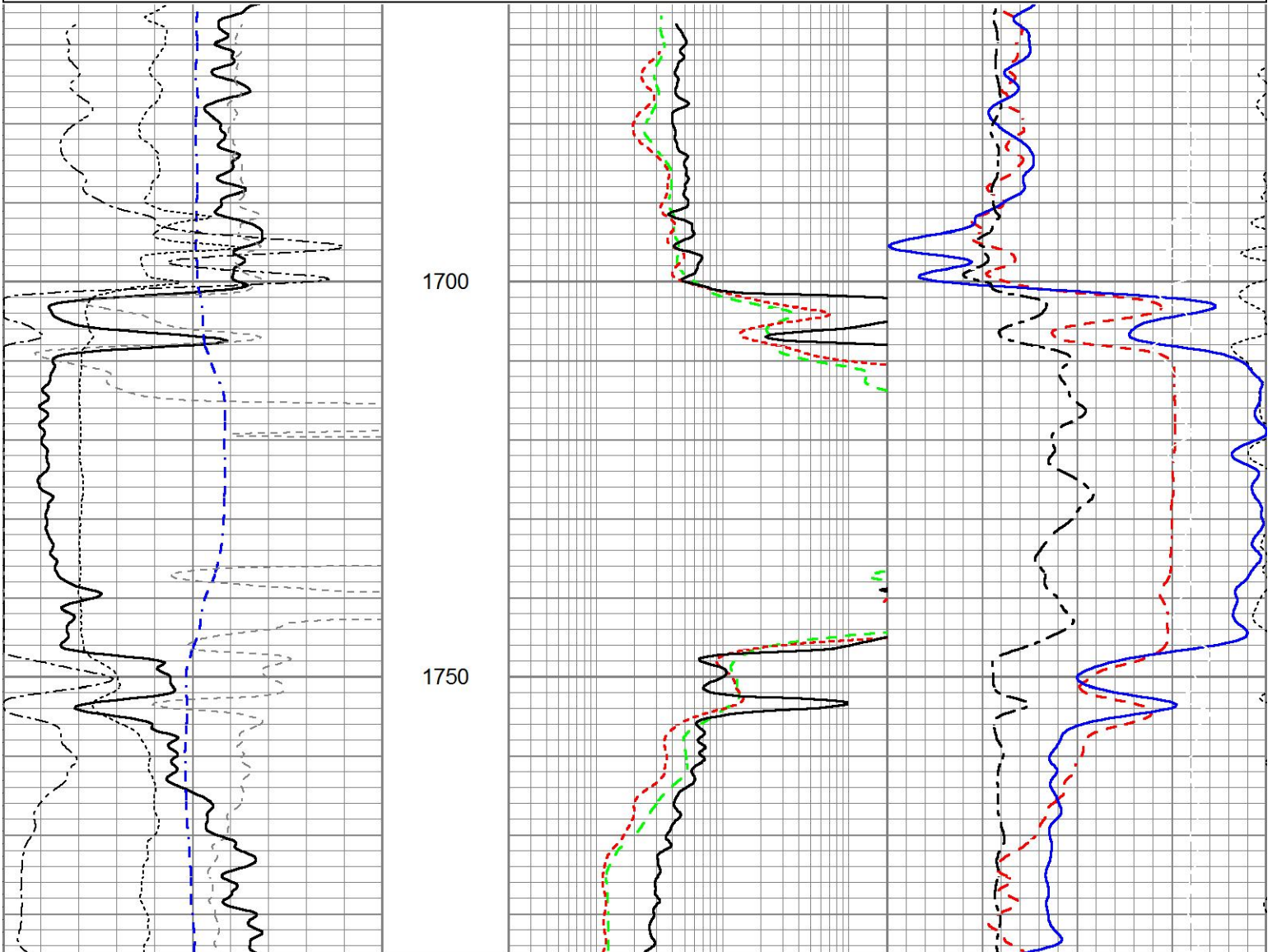
THANK YOU FOR USING ELI WIRELINE HAYS, KANSAS (785) 628-6395  
DIRECTIONS  
OGALLAH, KS. & I-70 EXIT, 7 1/2 N. TO "RD. D", 2E., ON EAST ACROSS FENCELINE, 1N. TO NEXT FENCELINE & E. INTO



ANHYDRITE REPEAT

Database File 7081pe.db  
 Dataset Pathname pass2.1A  
 Presentation Format obrcompnec  
 Dataset Creation Fri Sep 23 18:23:27 2022  
 Charted by Depth in Feet scaled 1:240

|      |                  |     |            |     |                             |     |    |                       |      |
|------|------------------|-----|------------|-----|-----------------------------|-----|----|-----------------------|------|
| 0    | Gamma Ray (GAPI) | 150 | TBHV (ft3) | 0.2 | Deep Resistivity (Ohm-m)    | 200 | 45 | CN Porosity (pu)      | -15  |
| -100 | SP (mV)          | 100 | ABHV (ft3) | 0.2 | Medium Resistivity (Ohm-m)  | 200 | 45 | Density Porosity (pu) | -15  |
| -200 | RxoRt            | 100 |            | 0.2 | Shallow Resistivity (Ohm-m) | 200 | 0  | PE                    | 10   |
| 6    | DCAL (in)        | 16  |            |     |                             |     |    | RHOC                  |      |
| 6    | MELCAL (Ohm-m)   | 16  |            |     |                             |     |    | -0.25 (g/cc)          | 0.25 |
| 0    | RWA (Ohm-m)      | 1   |            |     |                             |     |    |                       |      |



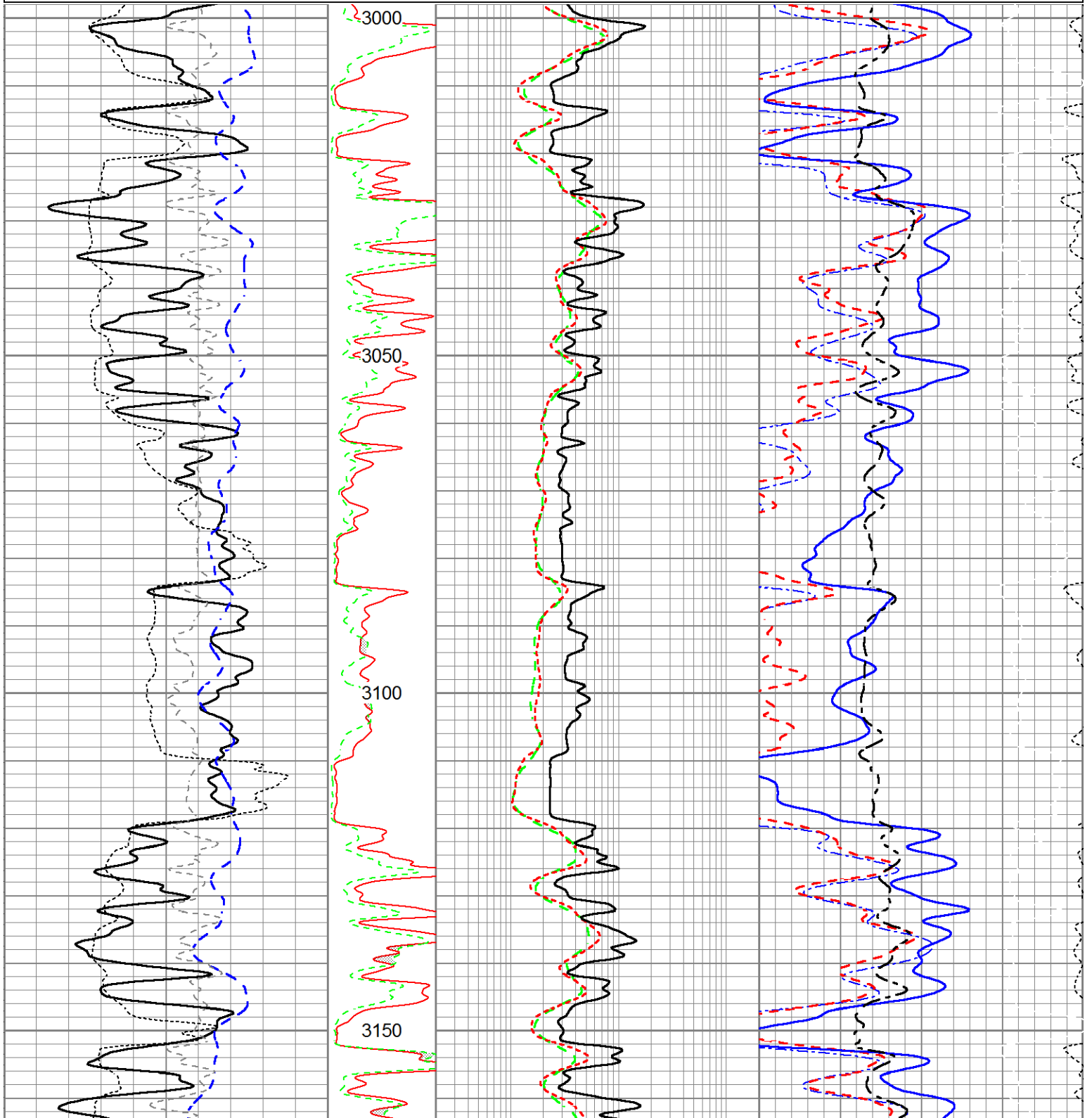
|      |                  |     |            |     |                             |     |    |                       |      |
|------|------------------|-----|------------|-----|-----------------------------|-----|----|-----------------------|------|
| 0    | Gamma Ray (GAPI) | 150 | TBHV (ft3) | 0.2 | Deep Resistivity (Ohm-m)    | 200 | 45 | CN Porosity (pu)      | -15  |
| -100 | SP (mV)          | 100 | ABHV (ft3) | 0.2 | Medium Resistivity (Ohm-m)  | 200 | 45 | Density Porosity (pu) | -15  |
| -200 | RxoRt            | 100 |            | 0.2 | Shallow Resistivity (Ohm-m) | 200 | 0  | PE                    | 10   |
| 6    | DCAL (in)        | 16  |            |     |                             |     |    | RHOC                  |      |
| 6    | MELCAL (Ohm-m)   | 16  |            |     |                             |     |    | -0.25 (g/cc)          | 0.25 |
| 0    | RWA (Ohm-m)      | 1   |            |     |                             |     |    |                       |      |

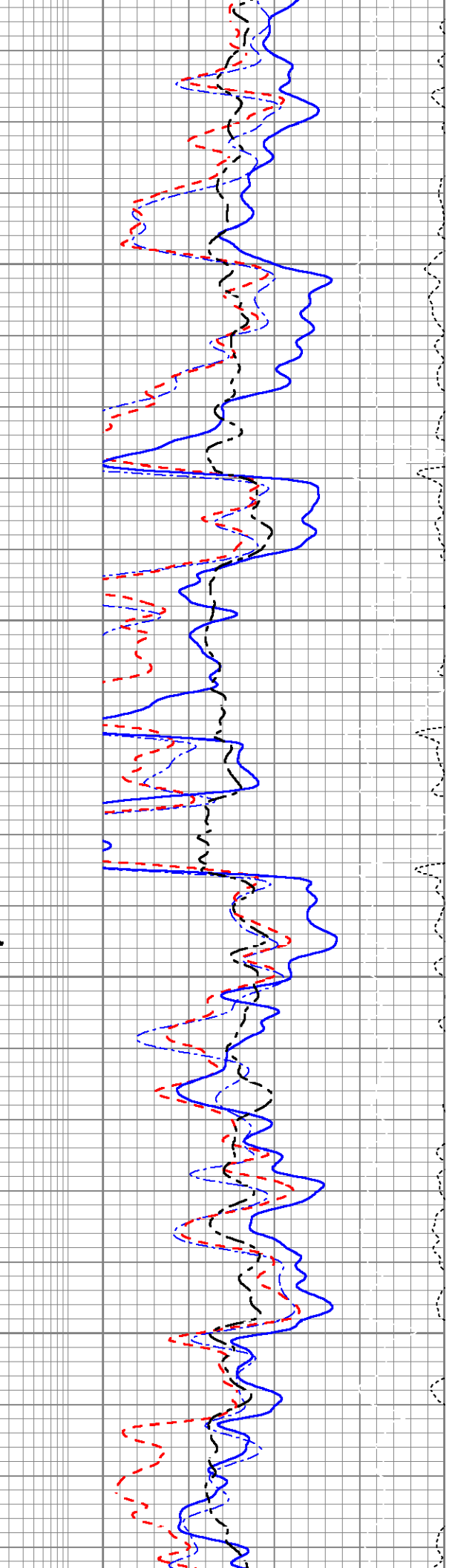
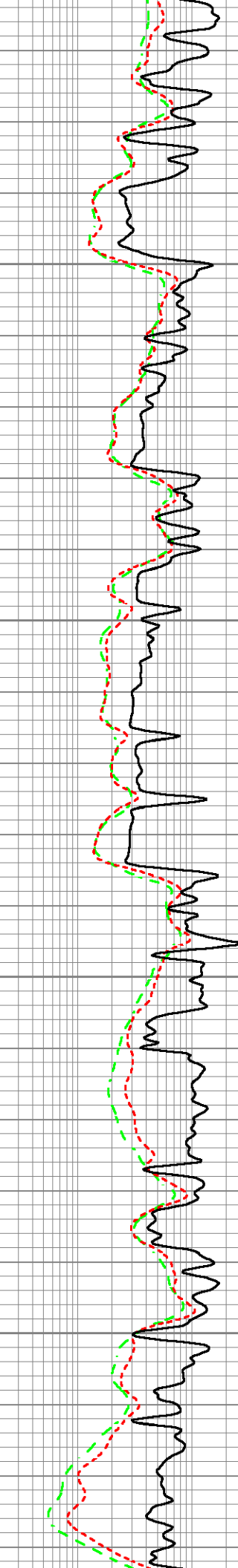
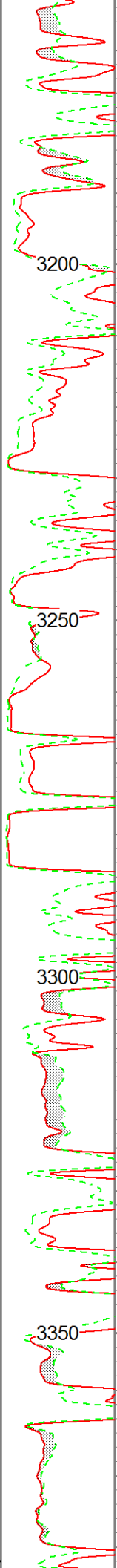
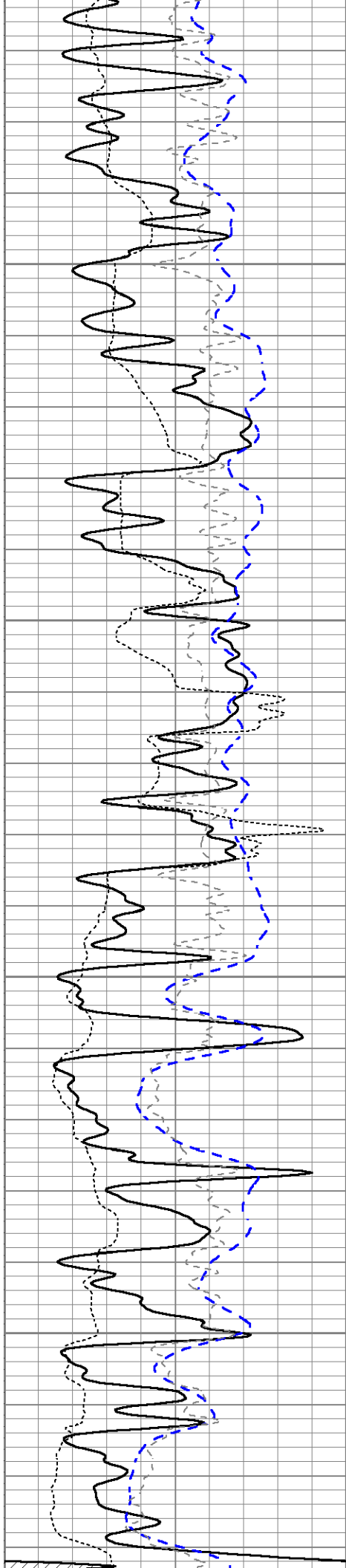


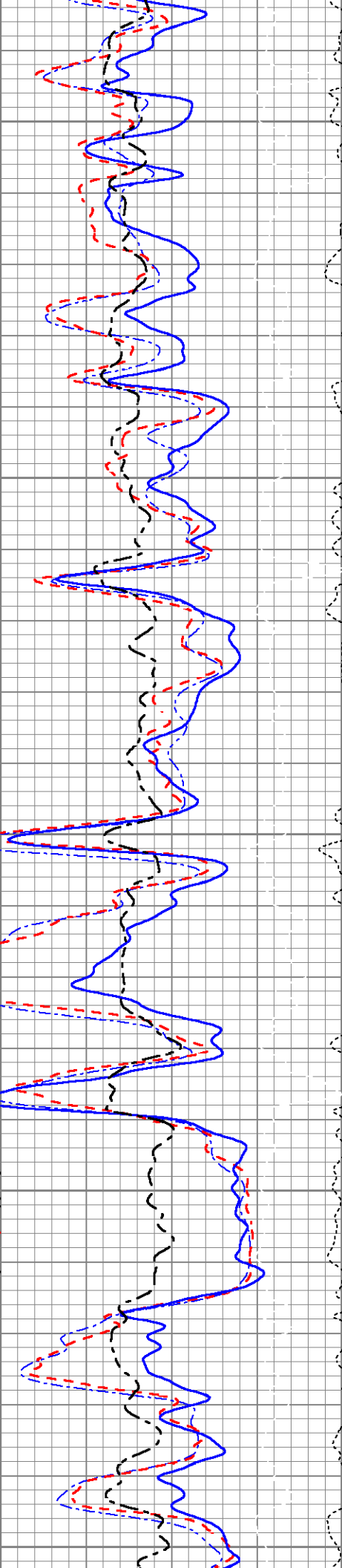
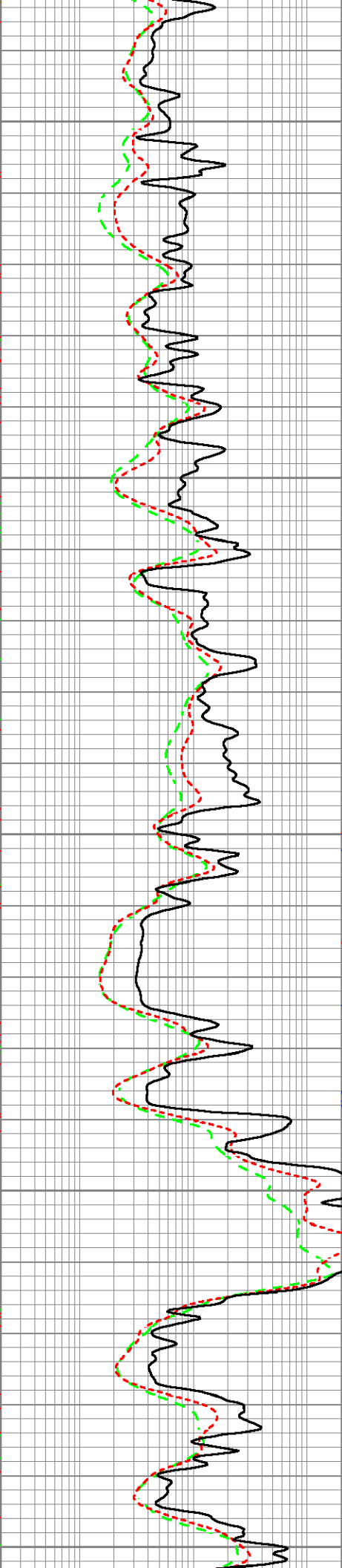
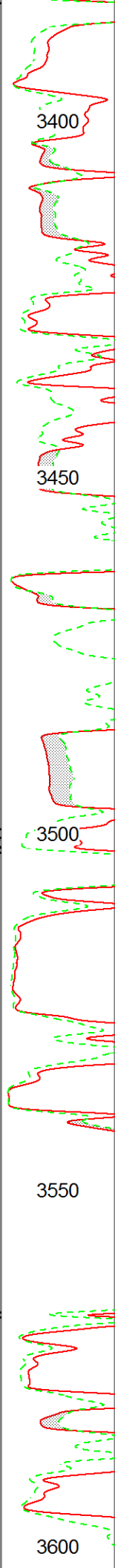
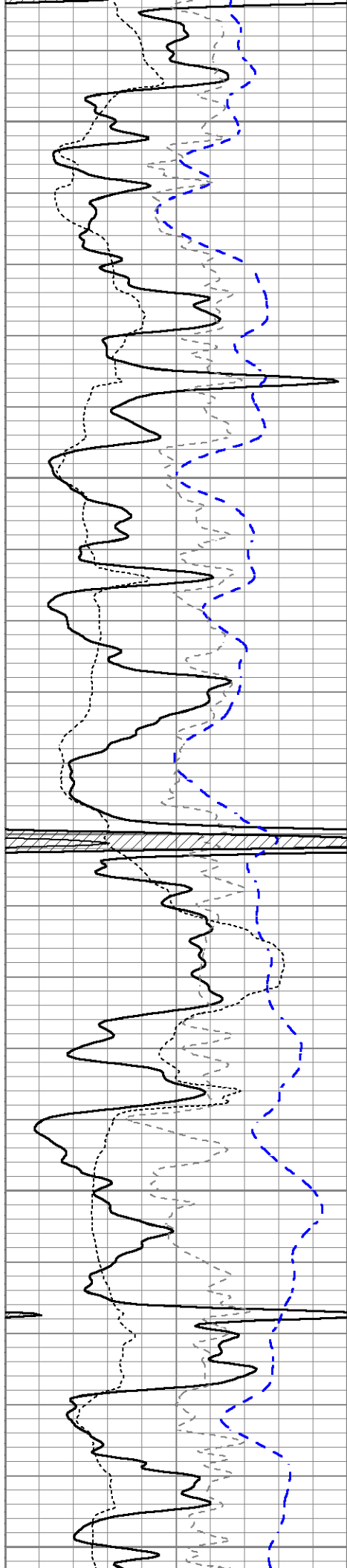
# MAIN SECTION

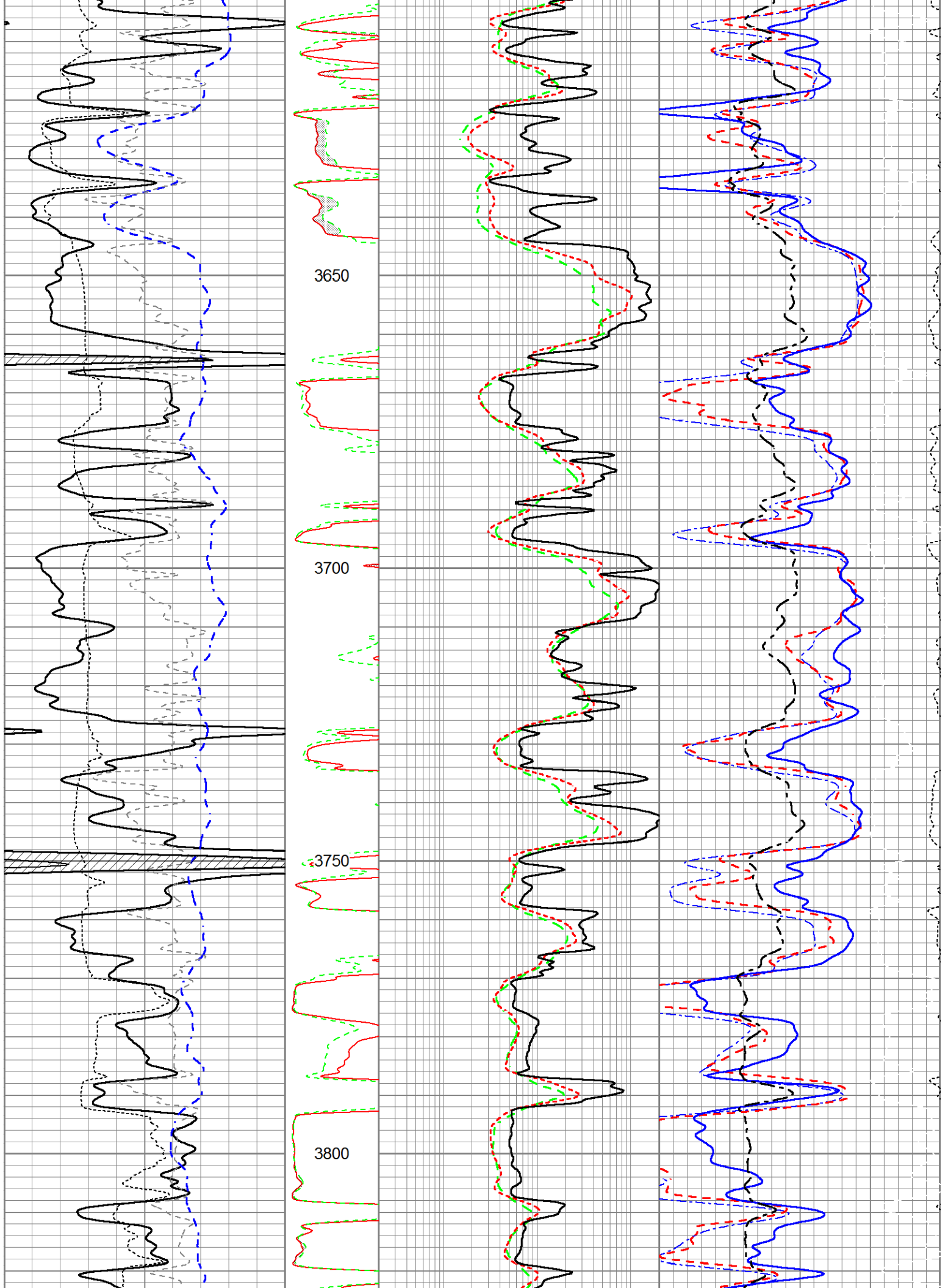
Database File 7081pe.db  
 Dataset Pathname pass4.1L  
 Presentation Format obrcomp  
 Dataset Creation Fri Sep 23 22:22:22 2022  
 Charted by Depth in Feet scaled 1:240

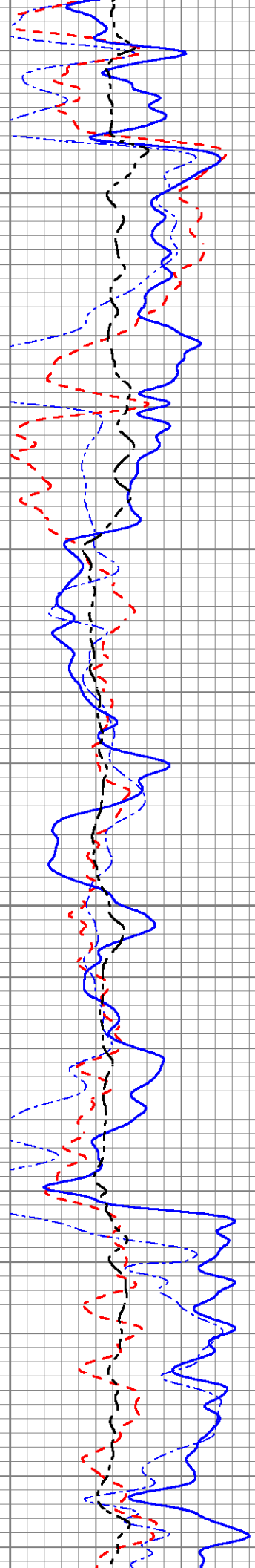
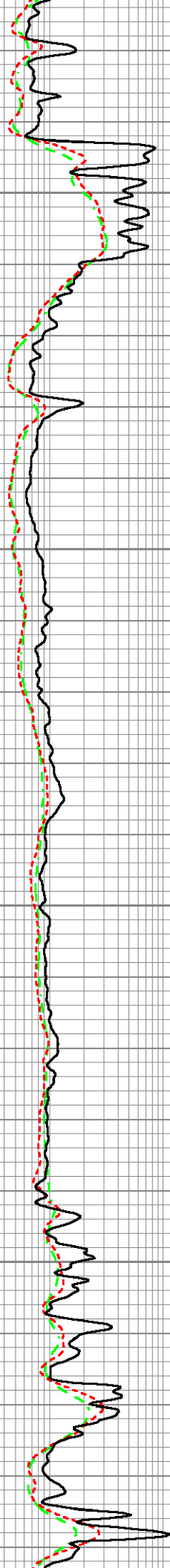
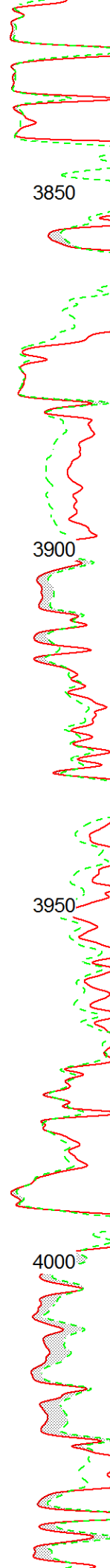
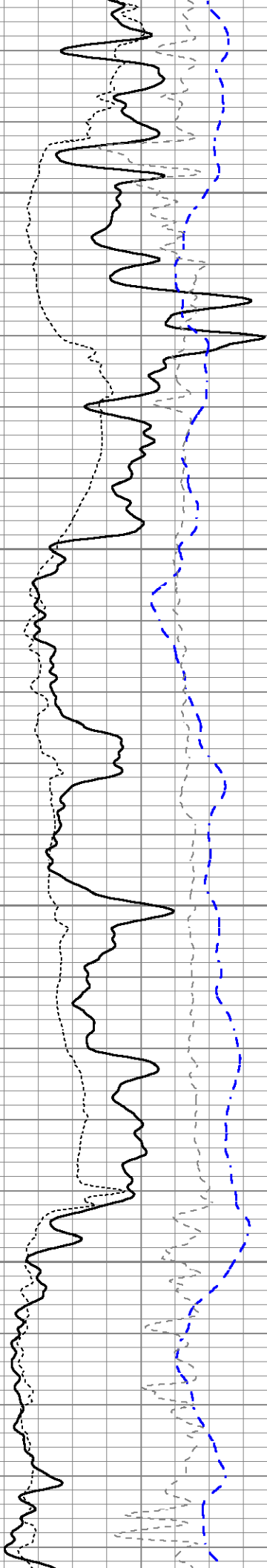
|      |                  |     |         |     |                             |     |    |                       |      |
|------|------------------|-----|---------|-----|-----------------------------|-----|----|-----------------------|------|
| 0    | Gamma Ray (GAPI) | 150 | MEL15   | 0.2 | Deep Resistivity (Ohm-m)    | 200 | 30 | Sonic Porosity (pu)   | -10  |
| -100 | SP (mV)          | 100 | (Ohm-m) | 0.2 | Medium Resistivity (Ohm-m)  | 200 | 30 | CN Porosity (pu)      | -10  |
| -200 | RxoRt            | 100 | 0 20    | 0.2 | Shallow Resistivity (Ohm-m) | 200 | 30 | Density Porosity (pu) | -10  |
| 6    | DCAL (in)        | 16  | MEL20   |     |                             |     | 0  | PE                    | 10   |
|      |                  |     | (Ohm-m) |     |                             |     |    |                       |      |
|      |                  |     | 0 20    |     |                             |     |    | RHOC                  |      |
|      |                  |     |         |     |                             |     |    | -0.25 (g/cc)          | 0.25 |

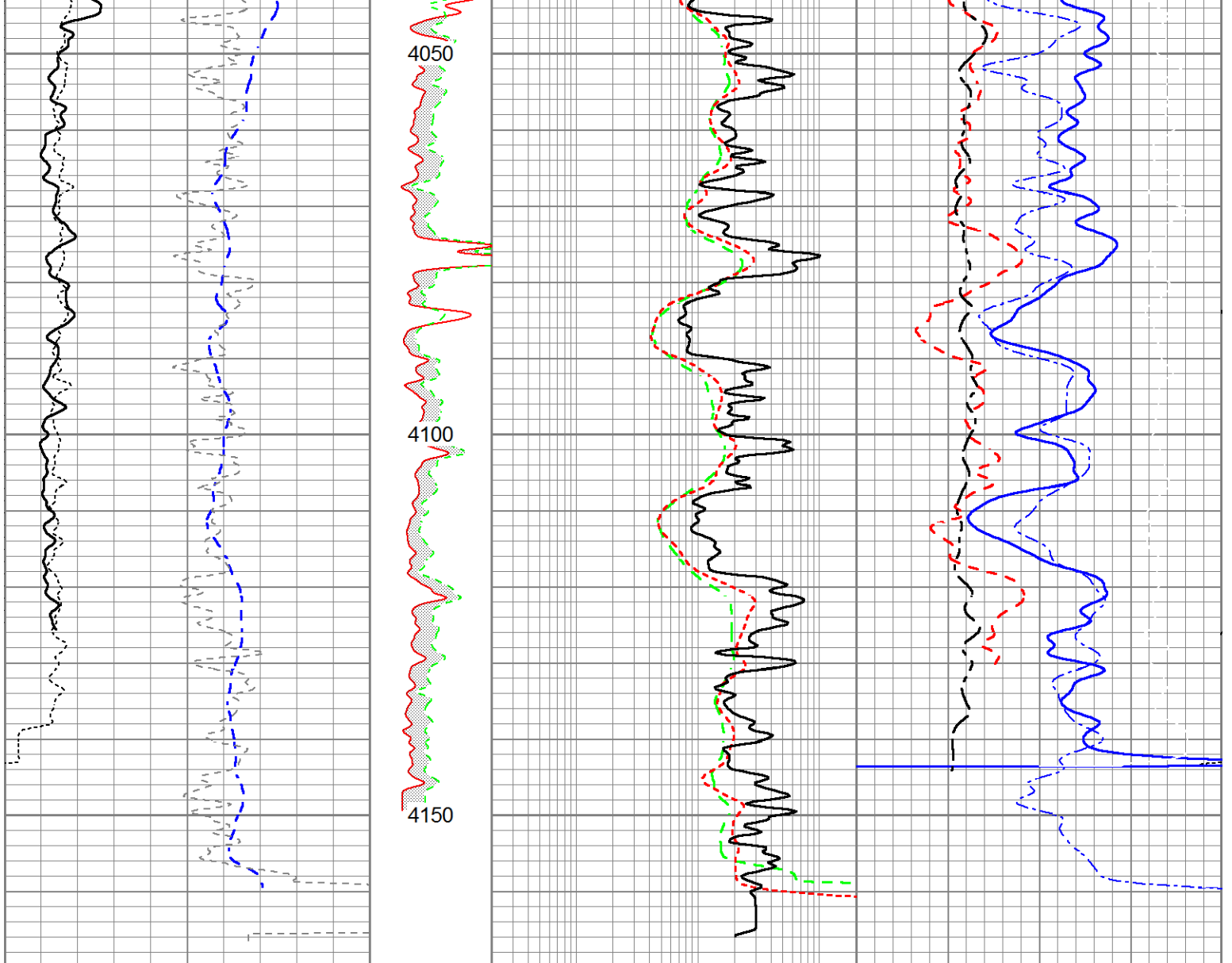












|      |                  |     |         |     |                            |                             |     |                     |                       |     |
|------|------------------|-----|---------|-----|----------------------------|-----------------------------|-----|---------------------|-----------------------|-----|
| 0    | Gamma Ray (GAPI) | 150 | MEL15   | 0.2 | Deep Resistivity (Ohm-m)   | 200                         | 30  | Sonic Porosity (pu) | -10                   |     |
| -100 | SP (mV)          | 100 | (Ohm-m) | 0.2 | Medium Resistivity (Ohm-m) | 200                         | 30  | CN Porosity (pu)    | -10                   |     |
| -200 | RxoRt            | 100 | 0       | 20  | 0.2                        | Shallow Resistivity (Ohm-m) | 200 | 30                  | Density Porosity (pu) | -10 |
| 6    | DCAL (in)        | 16  | MEL20   |     |                            |                             | 0   | PE                  | 10                    |     |
|      |                  |     | (Ohm-m) |     |                            |                             |     |                     |                       |     |
|      |                  |     | 0       | 20  |                            |                             |     |                     |                       |     |
|      |                  |     |         |     |                            |                             |     | RHOC                |                       |     |
|      |                  |     |         |     |                            |                             |     | -0.25 (g/cc)        | 0.25                  |     |