

MICRO LOG



Company NEC OPERATING - KANSAS, LLC.
 Well ELLIE #1
 Field STRATTON
 County TREGO State KANSAS

Location: 2310' FSL & 1700' FWL
 E/2 - NW - NE - SW
 API #: 15-195-23144-0000
 Permanent Datum GROUND LEVEL Elevation 2231
 Log Measured From KELLY BUSHING 7' A.G.L.
 Drilling Measured From KELLY BUSHING
 SEC 18 TWP 11S RGE 21W
 Other Services
 CDL/CNL/PE
 DIL/SONIC
 Elevation
 K.B. 2238
 D.F. 2236
 G.L. 2231

| | |
|------------------------------|---------------|
| Date | 9/23/22 |
| Run Number | TWO |
| Depth Driller | 4100 |
| Depth Logger | 4163 |
| Bottom Logged Interval | 4147 |
| Top Log Interval | 3000 |
| Casing Driller | 8 5/8"@254' |
| Casing Logger | 264 |
| Bit Size | 7 7/8" |
| Type Fluid in Hole | CHEMICAL MUD |
| Density / Viscosity | 9.3/58 |
| pH / Fluid Loss | 10.0/6.0 |
| Source of Sample | FLOWLINE |
| Rm @ Meas. Temp | .850@76F |
| Rmf @ Meas. Temp | .638@76F |
| Rmc @ Meas. Temp | 1.02@76F |
| Source of Rmf / Rmc | MEASUREMENT |
| Rm @ BHT | .552@117F |
| Time Circulation Stopped | 4:5 HOURS |
| Time Logger on Bottom | 8:30 P.M. |
| Maximum Recorded Temperature | 117F |
| Equipment Number | 922339 |
| Location | HAYS, KANSAS |
| Recorded By | JEFF LUEBBERS |
| Witnessed By | SEAN DEENIHAN |

<<< Fold Here >>>

All interpretations are opinions based on inferences from electrical or other measurements and we cannot and do not guarantee the accuracy or correctness of any interpretation, and we shall not, except in the case of gross or willful negligence on our part, be liable or responsible for any loss, costs, damages, or expenses incurred or sustained by anyone resulting from any interpretation made by any of our officers, agents or employees. These interpretations are also subject to our general terms and conditions set out in our current Price Schedule.

15-195-23144-0000 Comments

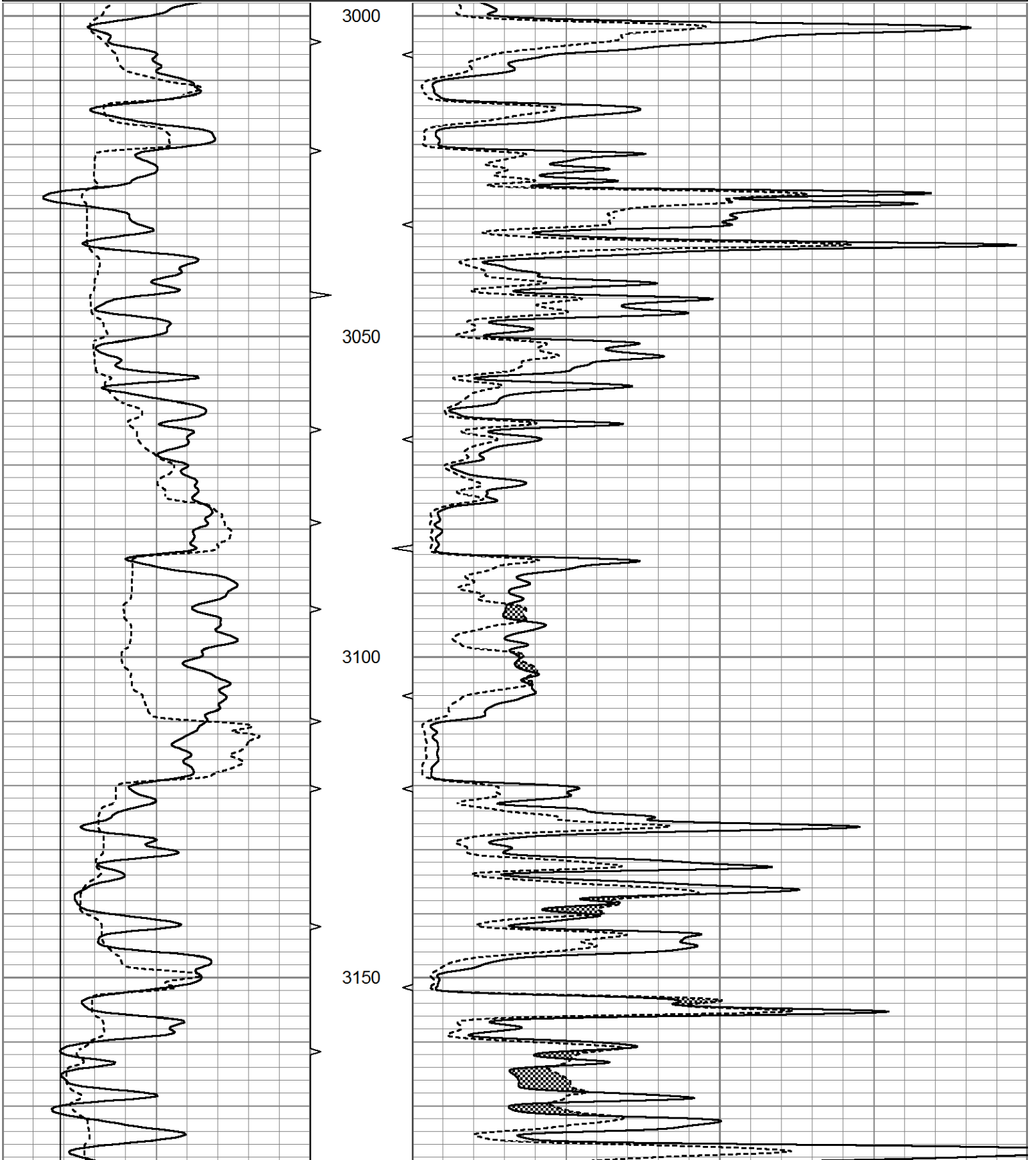
THANK YOU FOR USING ELI WIRELINE HAYS, KANSAS (785) 628-6395
 DIRECTIONS
 OGALLAH, KS. & I-70 EXIT, 7 1/2 N. TO "RD. D", 2E., ON EAST ACROSS FENCELINE, 1N. TO NEXT FENCELINE & E. INTO

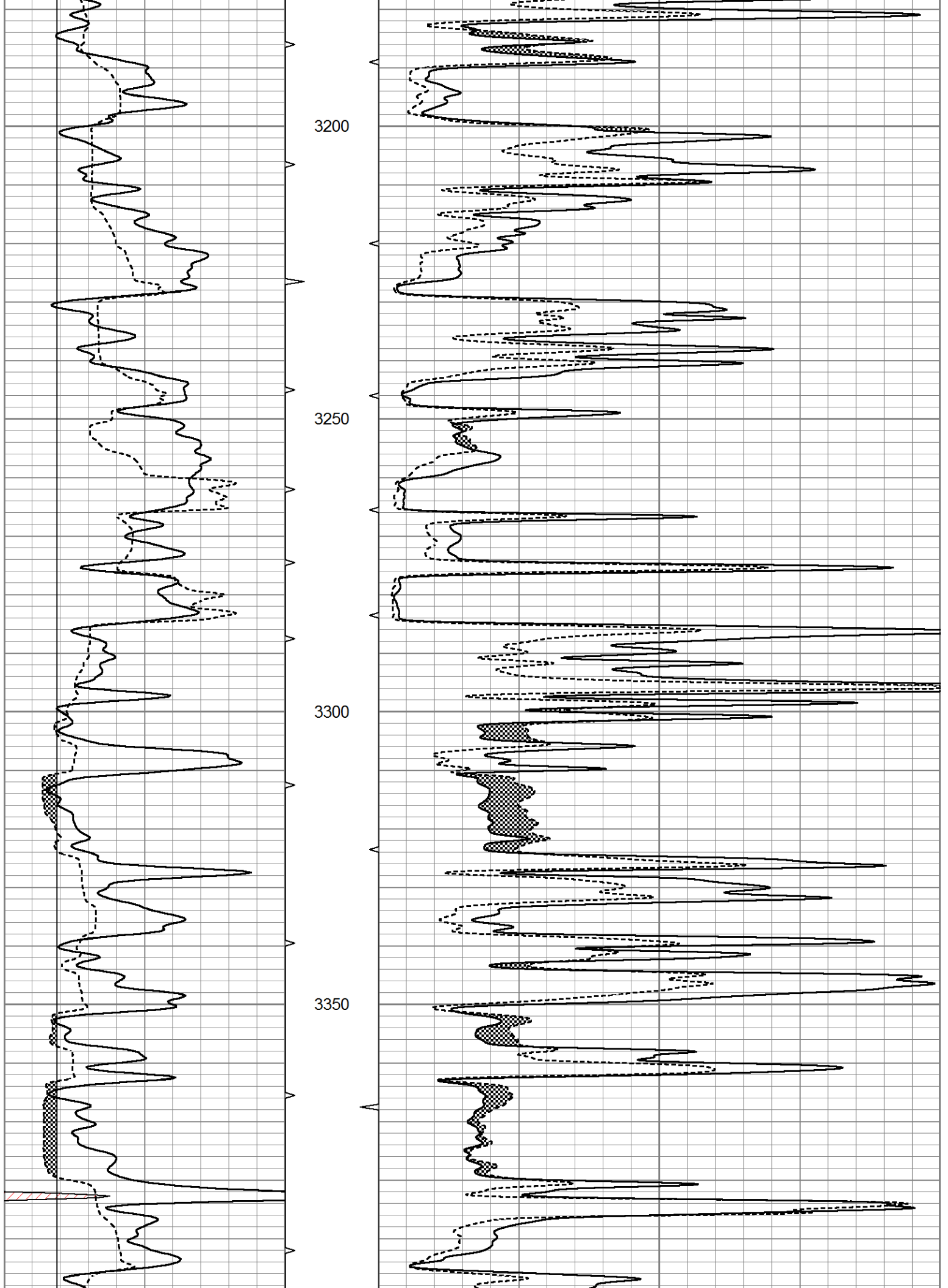


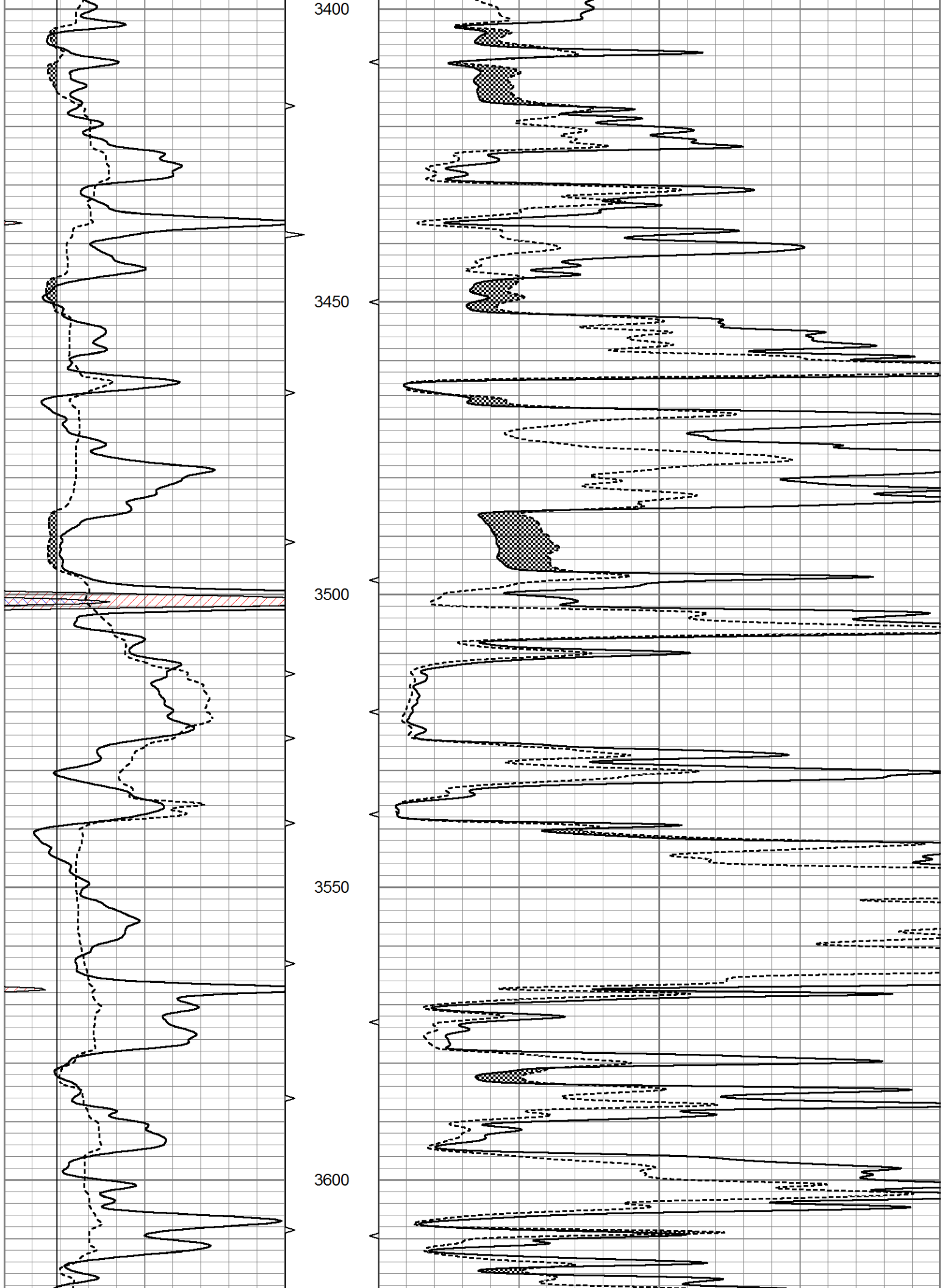
MAIN SECTION

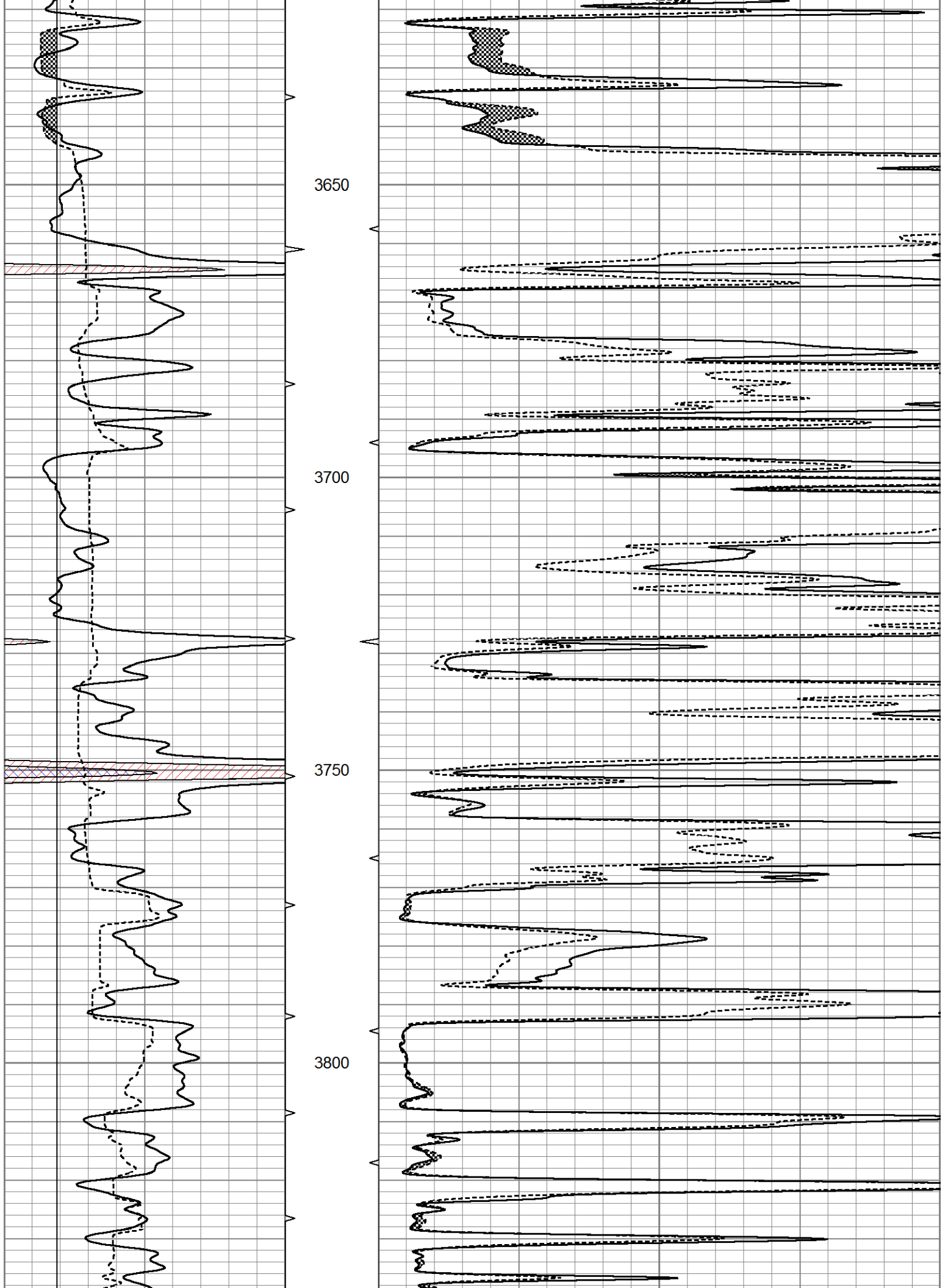
Database File 7081pe.db
 Dataset Pathname pass7.6
 Presentation Format micro
 Dataset Creation Fri Sep 23 21:28:20 2022
 Charted by Depth in Feet scaled 1:240

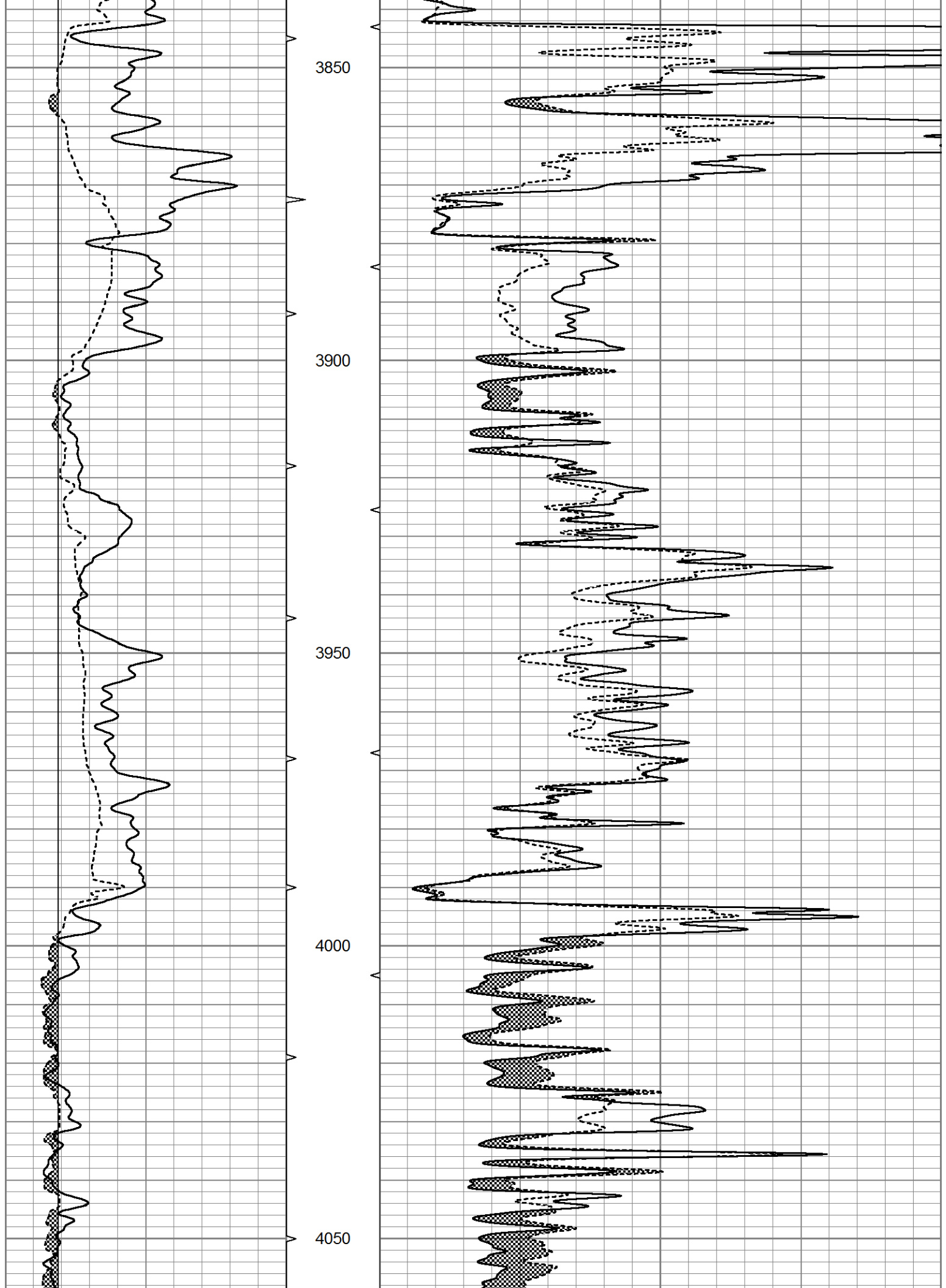
| | | | | | | |
|---|-------------|-----|----------|----|---------------|----|
| 0 | GR (GAPI) | 150 | ABHV | 0 | MEL20 (Ohm-m) | 40 |
| 6 | MELCAL (in) | 16 | 10 (ft3) | 0 | MEL15 (Ohm-m) | 40 |
| | | | ABHV | | | |
| | | | 0 (ft3) | 10 | | |

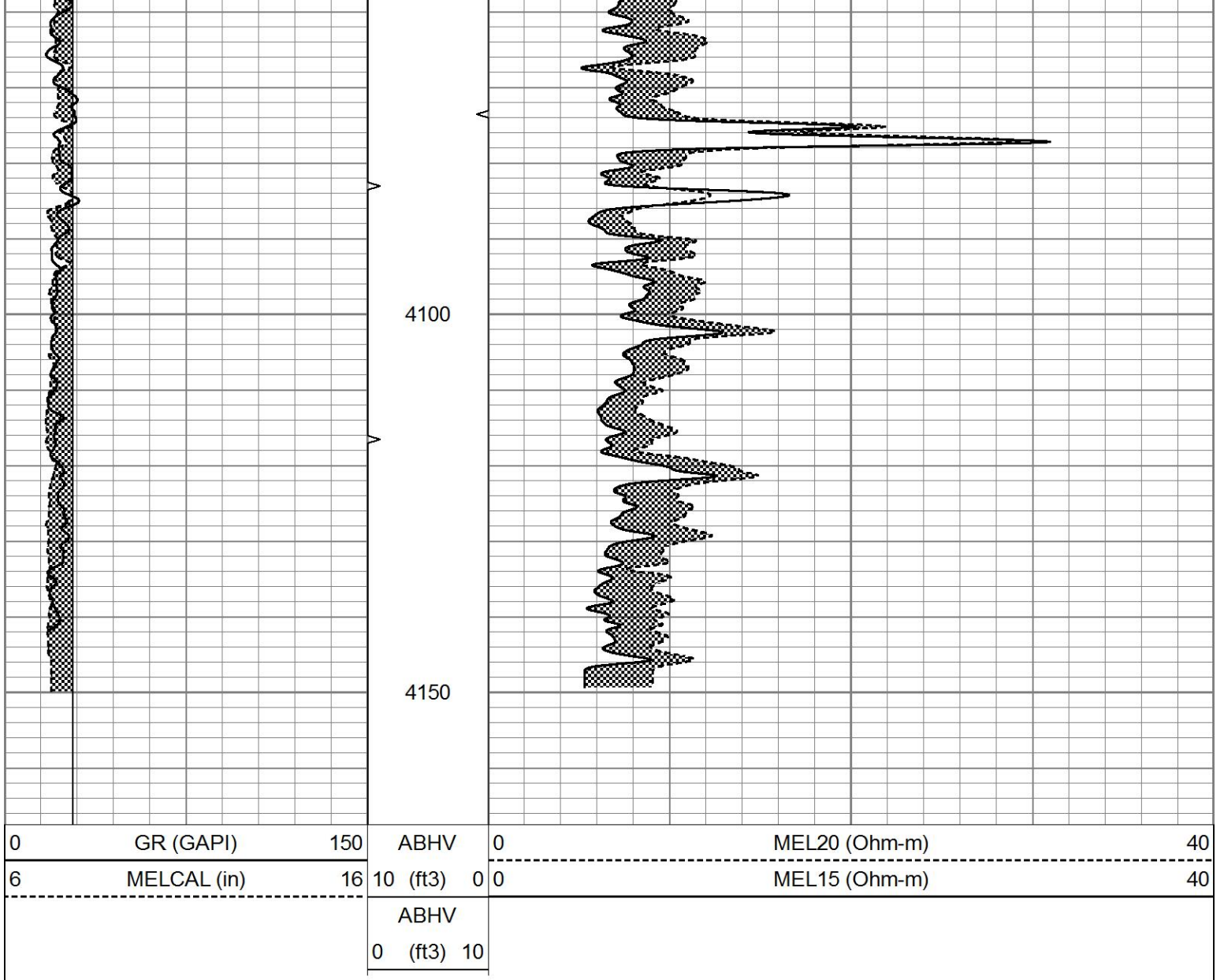








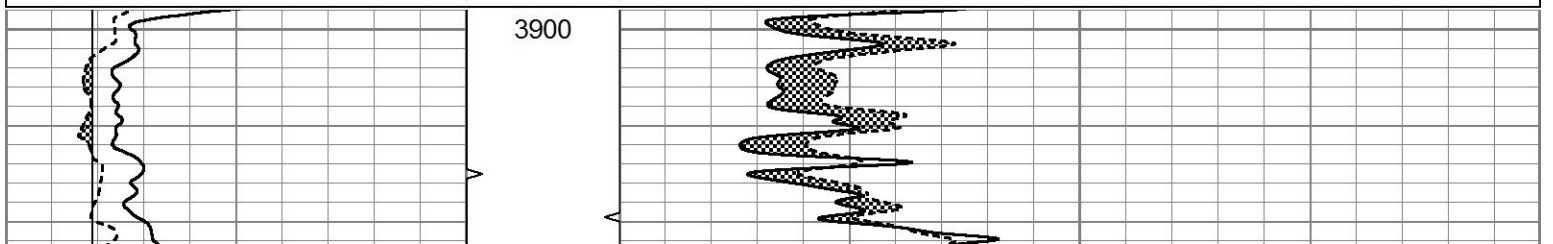


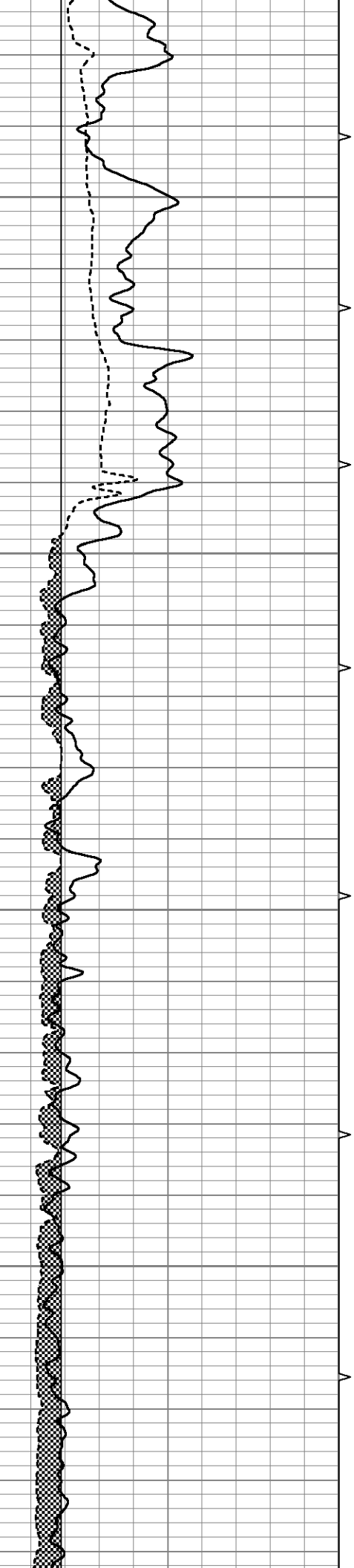


REPEAT SECTION

Database File 7081pe.db
 Dataset Pathname pass6.2
 Presentation Format micro
 Dataset Creation Fri Sep 23 21:36:30 2022
 Charted by Depth in Feet scaled 1:240

| | | | | | | |
|---|-------------|-----|----------|-----|---------------|----|
| 0 | GR (GAPI) | 150 | ABHV | 0 | MEL20 (Ohm-m) | 40 |
| 6 | MELCAL (in) | 16 | 10 (ft3) | 0 0 | MEL15 (Ohm-m) | 40 |
| | | | ABHV | | | |
| | | | 0 (ft3) | 10 | | |





3950

4000

4050

4100

