

**MIDWEST SURVEYS**  
 LOGGING - PERFORATING - CONSULTING SERVICES  
 P.O. Box 68, Osawatomie, KS 66064  
 913 / 755 - 2128

**GAMMA RAY / NEUTRON / CCL**

File No. Company **Jaxco Energy**  
 Well **Baker No. JX-20**

Field **Iola**  
 County **Allen** State **Kansas**

Location **10651 FSL & 3941 FEL**  
**NW-NE-SE-SE**

Other Services  
 Perforate

Sec. 5 Typ. 248 Rge. 18e  
 Permament Datum GL Elevation 992'  
 Log Measured From GL K.B. NA  
 Drilling Measured From GL D.F. NA  
 G.L. 992'

Date 09-2-2022  
 Run Number One  
 Depth Miller 1011.0  
 Depth Logger 1003.3  
 Bottom Logged Interval 1002.3  
 Top Log Interval 20.0  
 Fluid Level Full

Type Fluid Water  
 Density / Viscosity NA  
 Salinity - PPM Cl NA  
 Max. Recorded Temp NA  
 Estimated Cement Top NA  
 Equipment No. 107' Clearatomic  
 Recorded by Steve Winkisch  
 Witnessed by Jack Snyder

BORE-HOLE RECORD				CASING RECORD			
RUN	BIT	FROM	TO	SIZE	WGT	FROM	TO
One	9.875"	20.0	1011.0	7.00"	21#	0.0	20.00
Two	5.625"	20.0	1011.0	2.875"	6.5#	0.0	1003.95

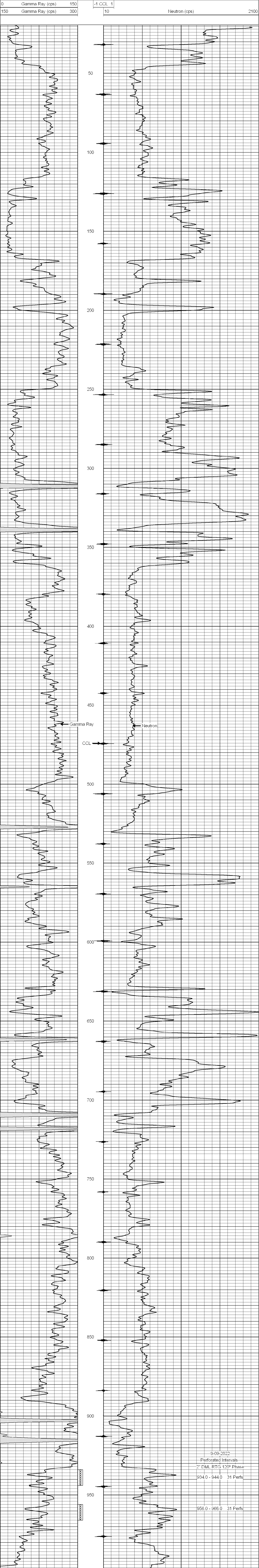
<<< Fold Here >>>

All interpretations are opinions based on inferences from electrical or other measurements and we cannot and do not guarantee the accuracy or correctness of any interpretation, and we shall not, except in the case of gross or willful negligence on our part, be liable or responsible for any loss, costs, damages, or expenses incurred or sustained by anyone resulting from any interpretation made by any of our officers, agents or employees. These interpretations are also subject to our general terms and conditions set out in our current Price Schedule.

Comments

Drilling Contractor :  
**EK Energy, LLC**

Database File: baker 20 jx.db  
 Dataset Pathname: pass1  
 Presentation Format: gr-n-ccl  
 Dataset Creation: Fri Sep 02 08:59:21 2022 by Log SCH 111116  
 Charted by: Depth in Feet scaled 1:240



9-09-2022  
 Perforated Intervals  
 2" DML RTG 120° Phase  
 934.0 - 944.0 31 Perfs  
 956.0 - 966.0 31 Perfs