

SONIC
LOG



Company L. D. DRILLING, INC.
Well #35-1 MIDDLETON
Field WHITNEY SOUTHWEST
County GOVE State KANSAS

Location: API #: 15-063-22423-0000
1466' FSL & 1868' FEL
SW - SE - NW - SE
SEC 35 TWP 15S RGE 27W
Permanent Datum GROUND LEVEL Elevation 2523
Log Measured From KELLY BUSHING 5' A.G.L.
Drilling Measured From KELLY BUSHING
Other Services
CDL/CNL
DIL/MEL
Elevation
K.B. 2528
D.F. 2526
G.L. 2523

Date	1/16/23
Run Number	TWO
Depth Driller	4517
Depth Logger	4518
Bottom Logged Interval	4510
Top Log Interval	300
Casing Driller	8 5/8"@306'
Casing Logger	306
Bit Size	7 7/8"
Type Fluid in Hole	CHEMICAL MUD
Density / Viscosity	9.4/49
pH / Fluid Loss	8.5/13.6
Source of Sample	FLOWLINE
Rm @ Meas. Temp	1.00@66F
Rmf @ Meas. Temp	.750@66F
Rmc @ Meas. Temp	1.20@66F
Source of Rmf / Rmc	MEASUREMENT
Rm @ BHT	.545@121F
Time Circulation Stopped	4 HOURS
Time Logger on Bottom	6.45 A.M.
Maximum Recorded Temperature	121F
Equipment Number	8916
Location	HAYS, KANSAS
Recorded By	JEFF LUEBBERS
Witnessed By	KIM SHOEMAKER

<<< Fold Here >>>

All interpretations are opinions based on inferences from electrical or other measurements and we cannot and do not guarantee the accuracy or correctness of any interpretation, and we shall not, except in the case of gross or willful negligence on our part, be liable or responsible for any loss, costs, damages, or expenses incurred or sustained by anyone resulting from any interpretation made by any of our officers, agents or employees. These interpretations are also subject to our general terms and conditions set out in our current Price Schedule.

Comments

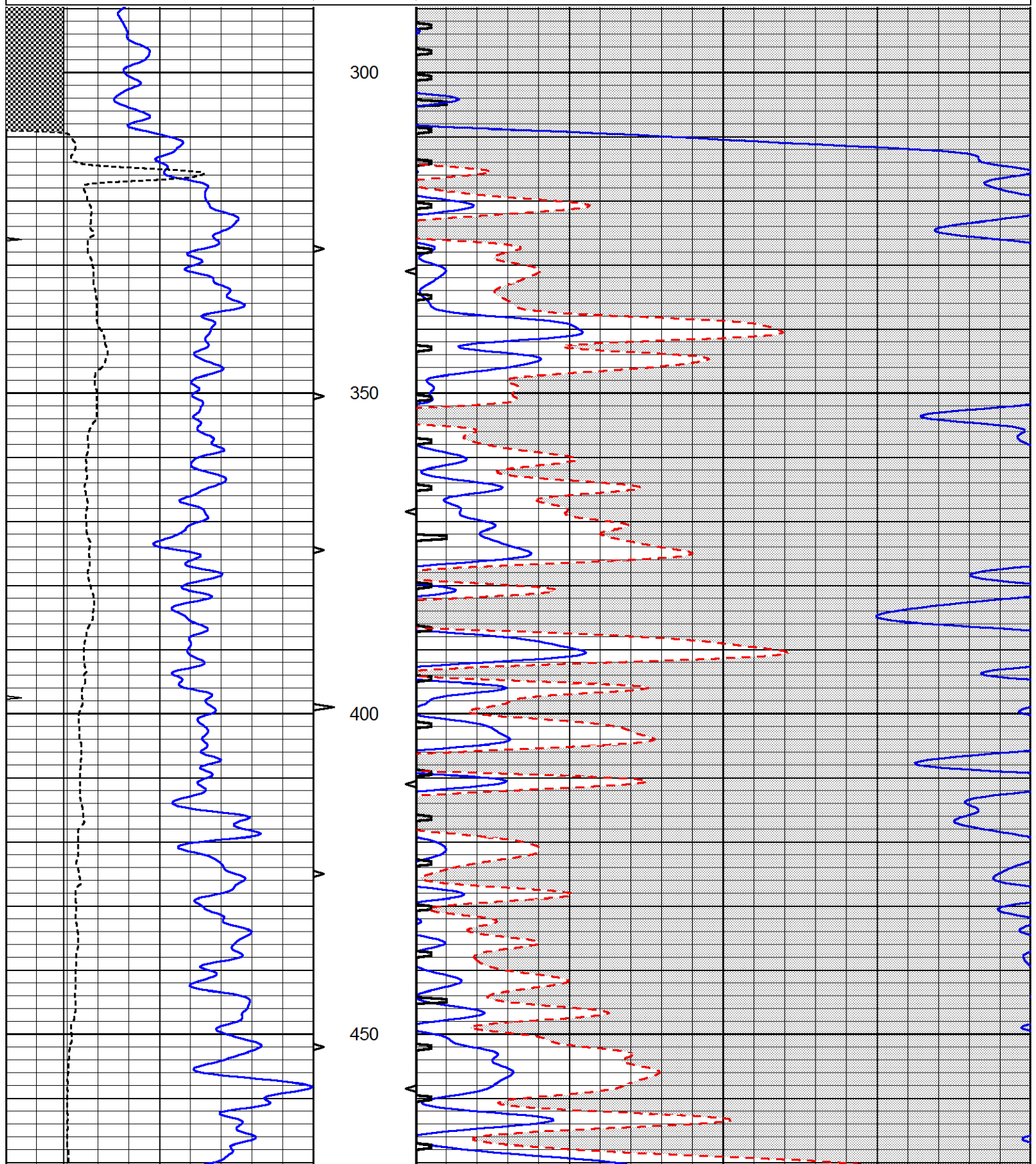
THANK YOU FOR USING ELI WIRELINE, HAYS, KS. (785) 628-6395
DIRECTIONS:
PENDENNIS, KS., (RED CHIEF RD. & HWY 4) 6N. TO "RD.C", 1 1/2E. TO CURVE, CONTINUE 1 MORE EAST THROUGH CATTLE GUARD ON TRAIL, TRAIL TURNS SOUTH 2 MORE MILES TO LOCATION

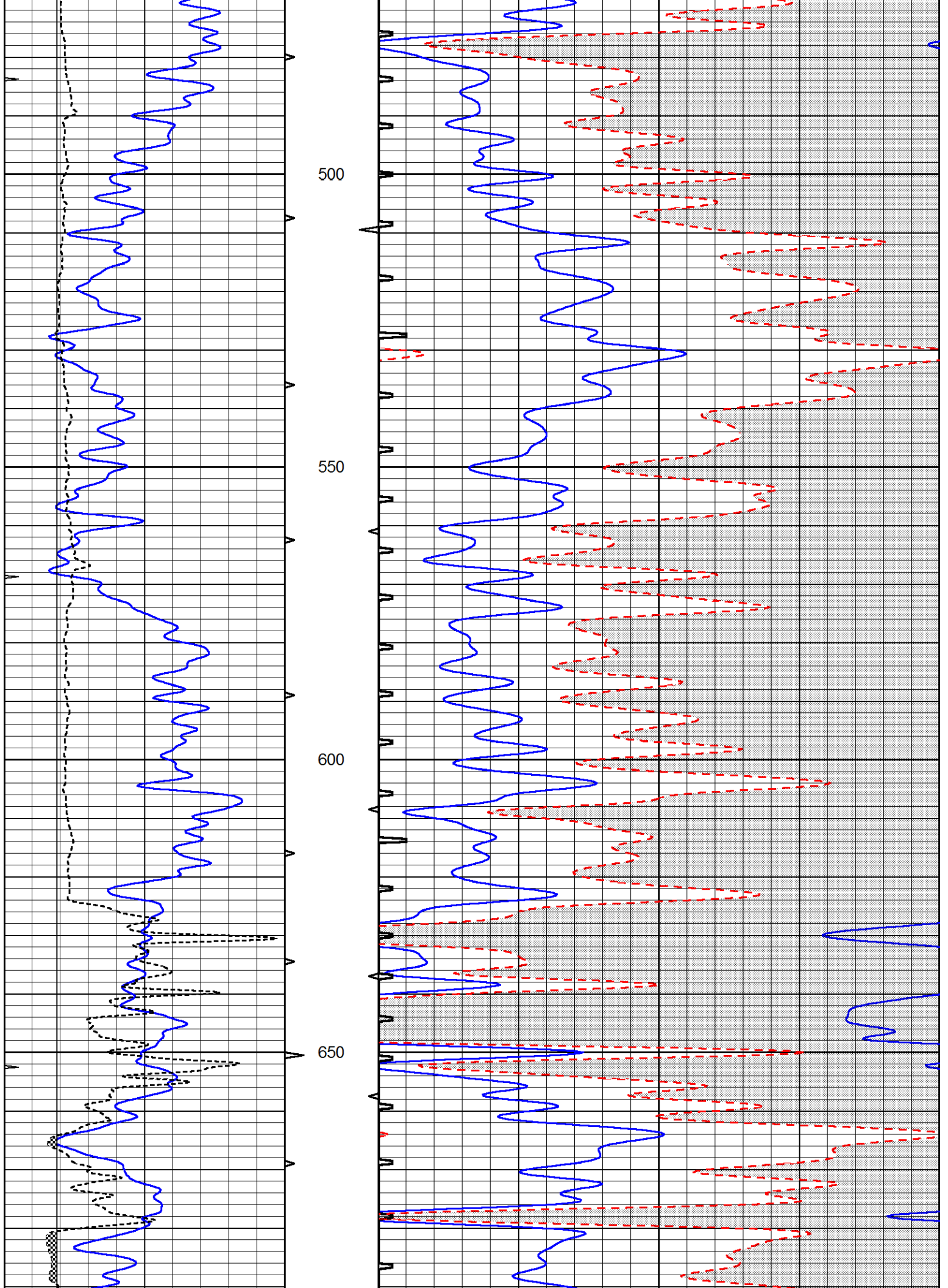


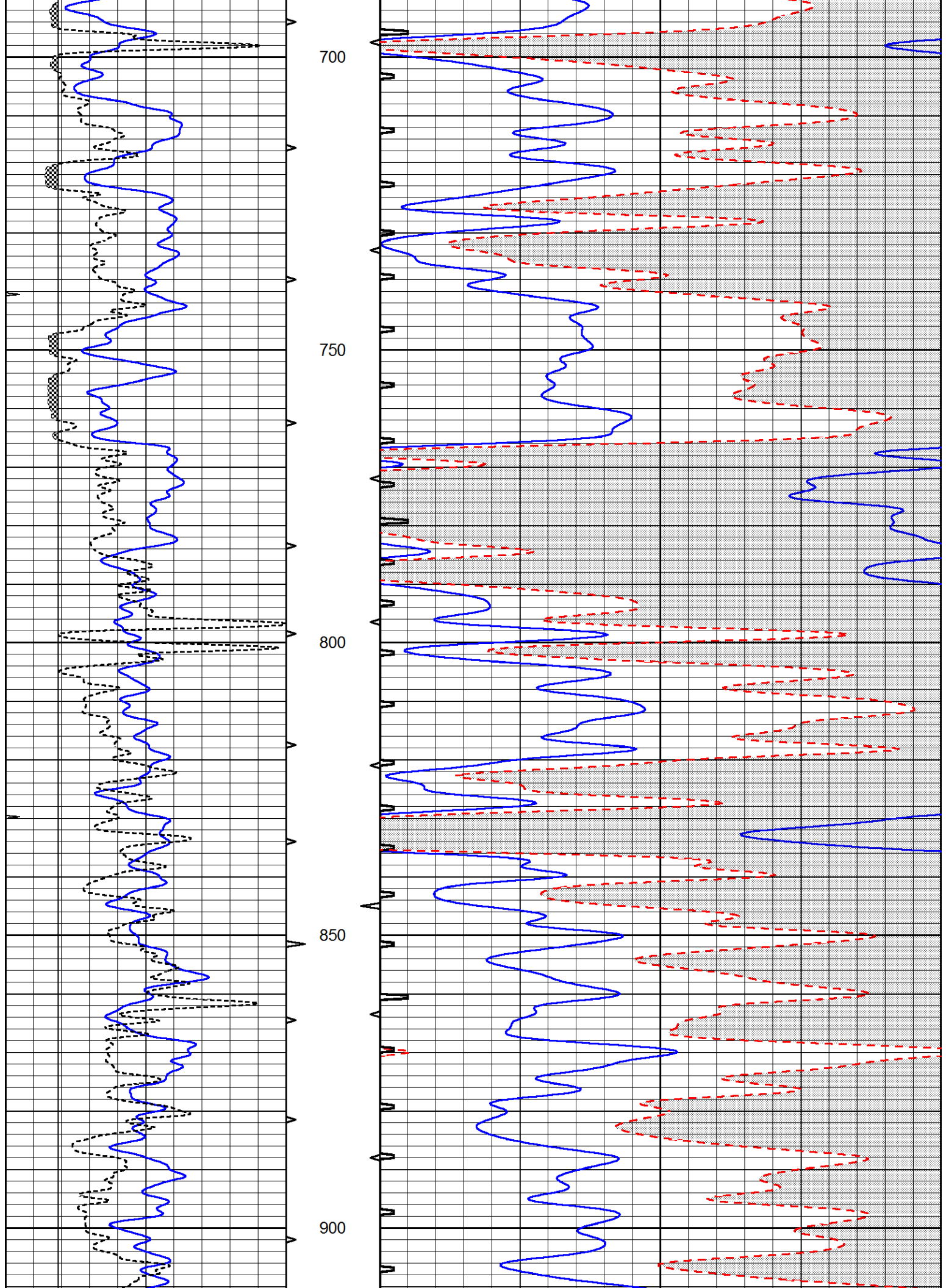
MAIN SECTION

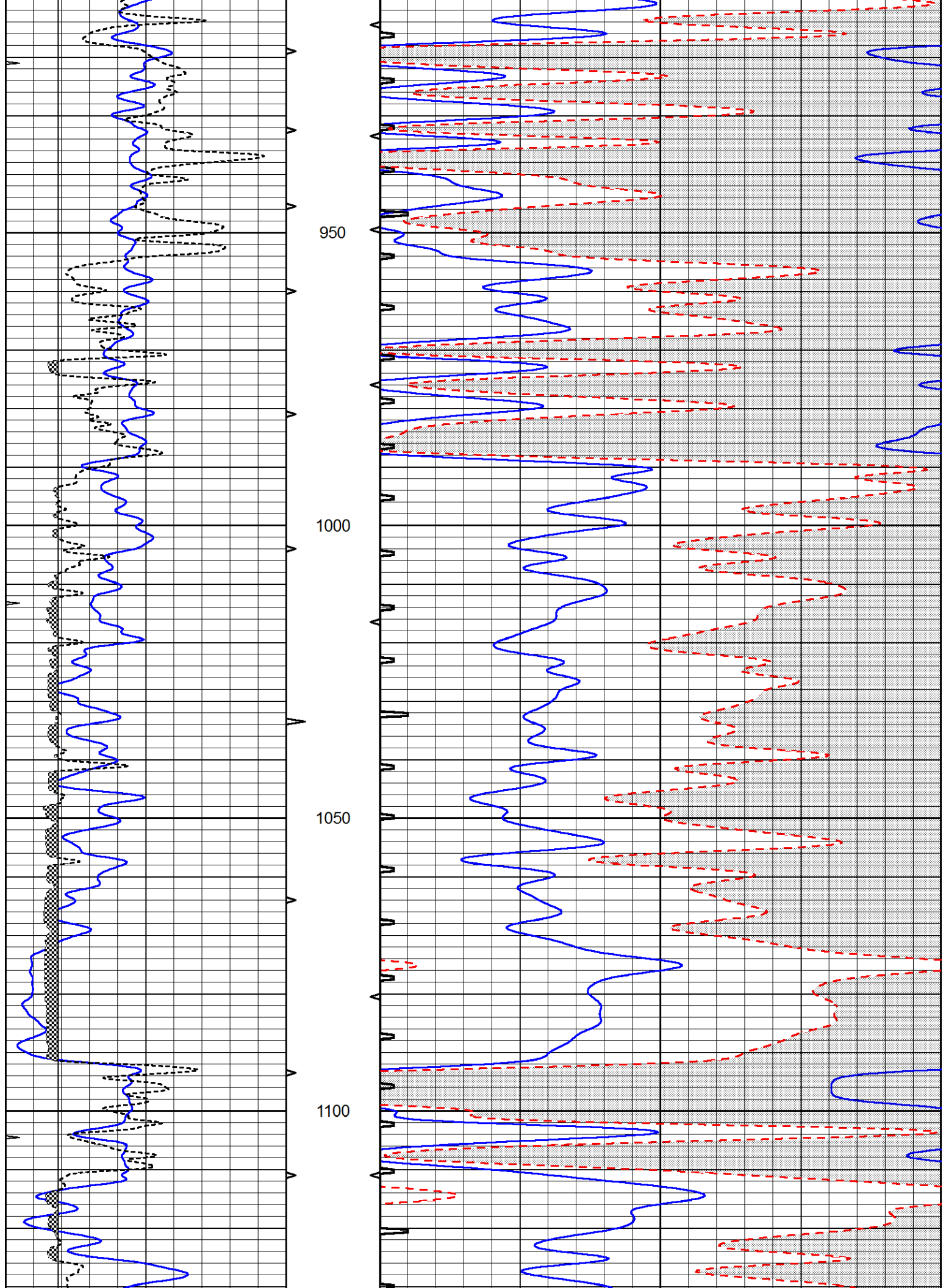
Database File 7439ddn.db
 Dataset Pathname pass6.2
 Presentation Format _slt
 Dataset Creation Mon Jan 16 08:22:43 2023
 Charted by Depth in Feet scaled 1:240

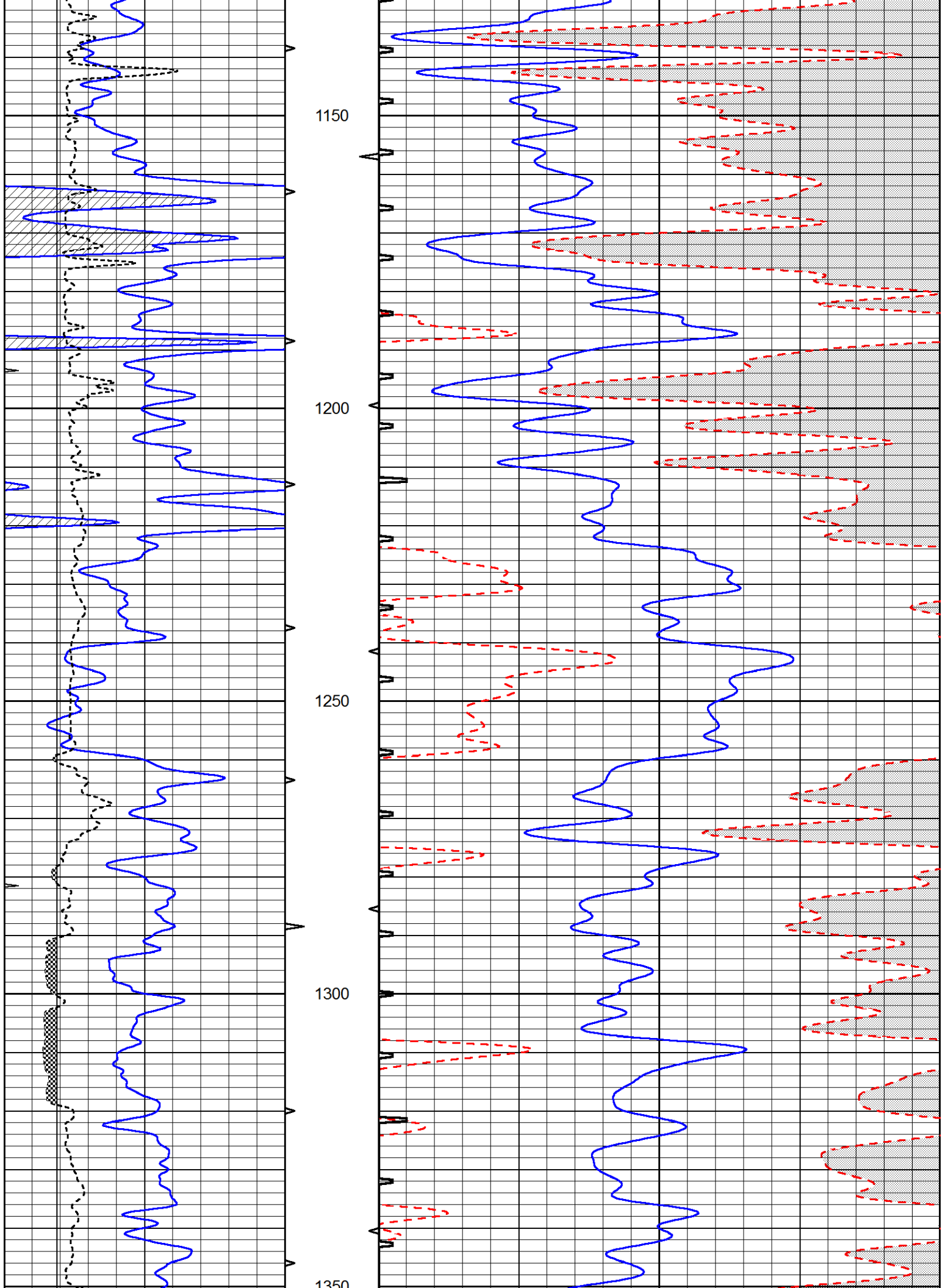
0	GAMMA RAY (GAPI)	150	ABHV	140	DELTA TIME (usec/ft)	40
0	MINMK	20	10 (ft3) 0	30	SONIC POROSITY (pu)	-10
6	MELCAL (in)	16	TBHV	0	ITT (msec)	20
			0 (ft3) 10			

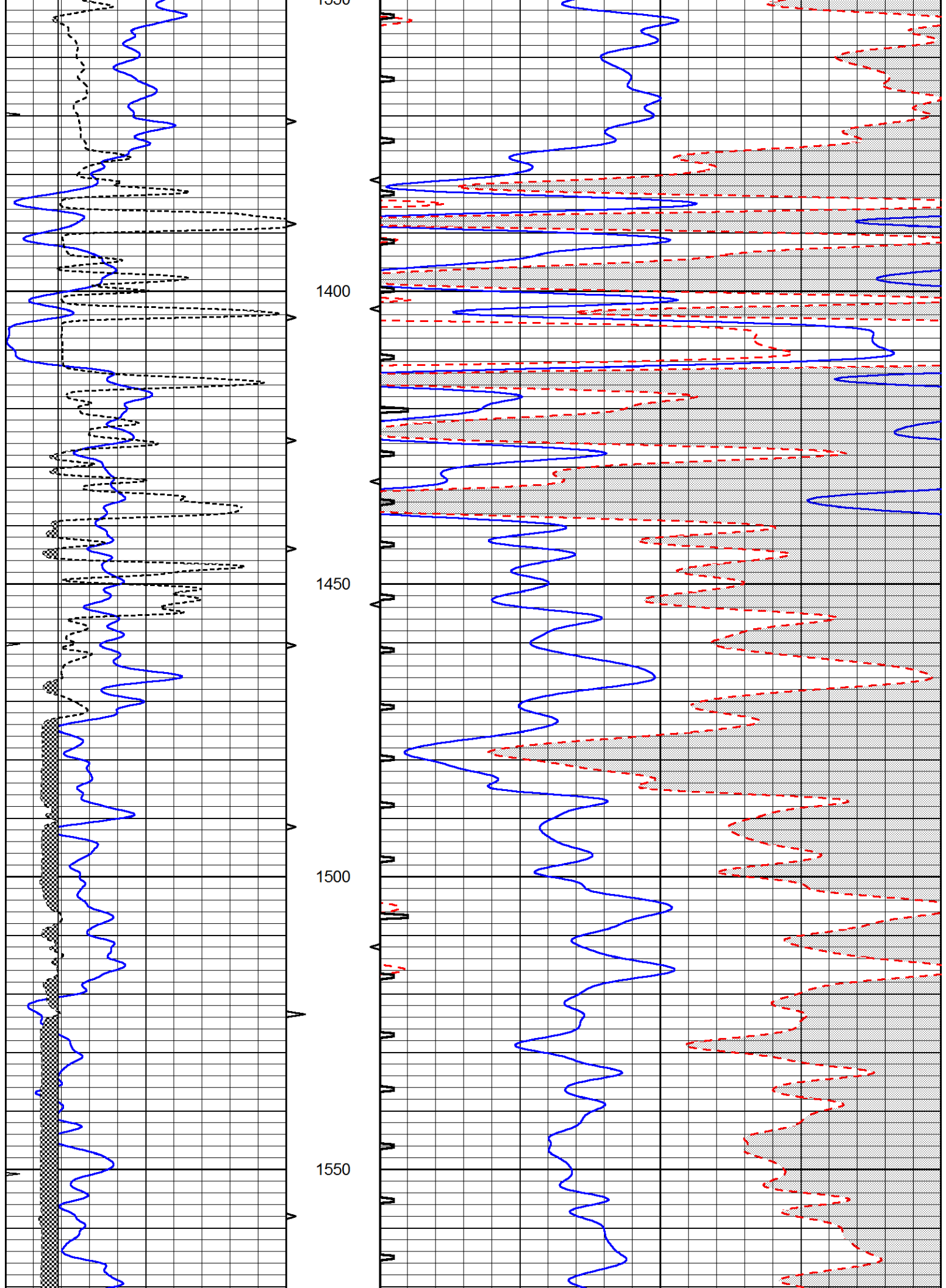


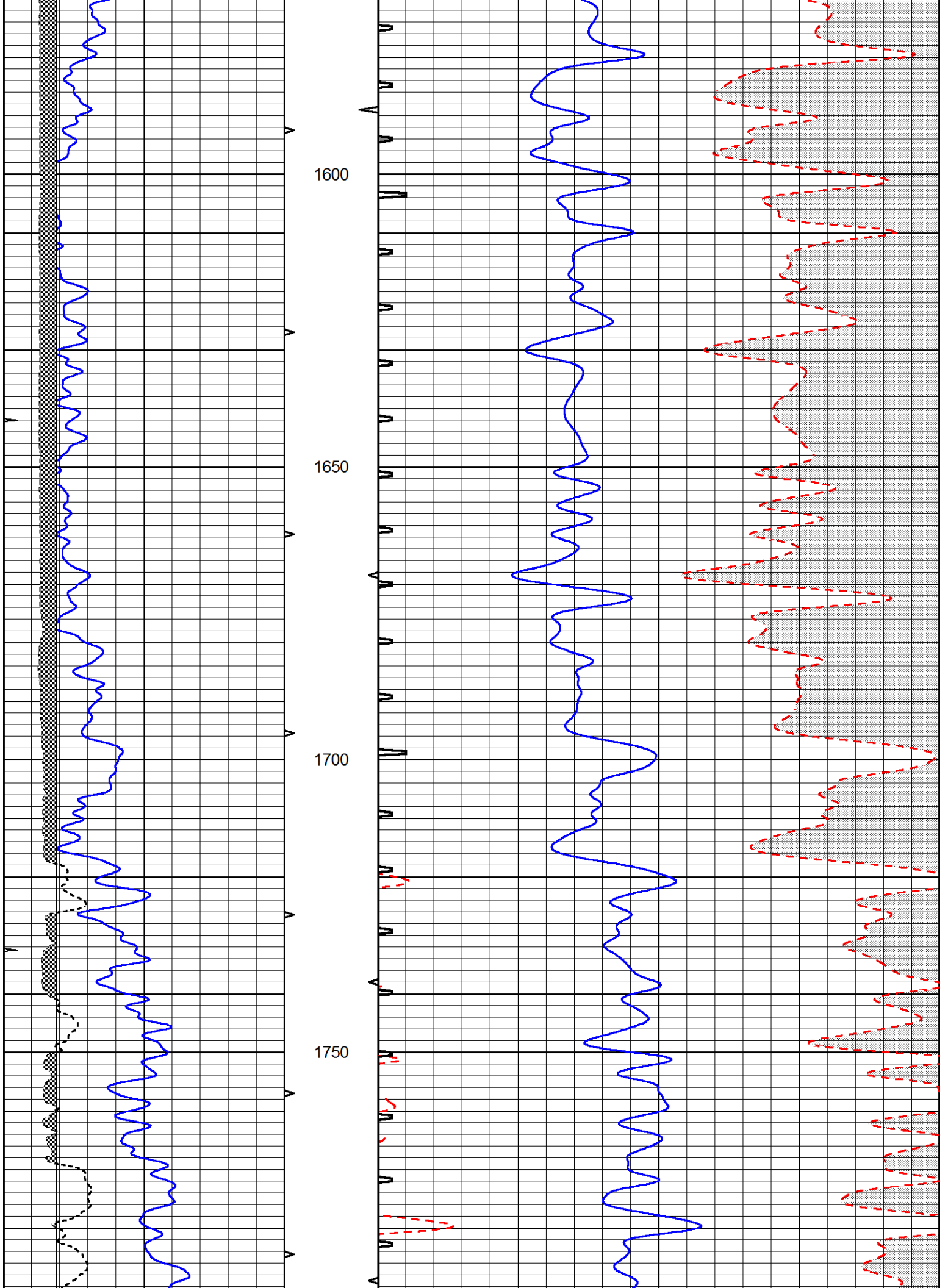


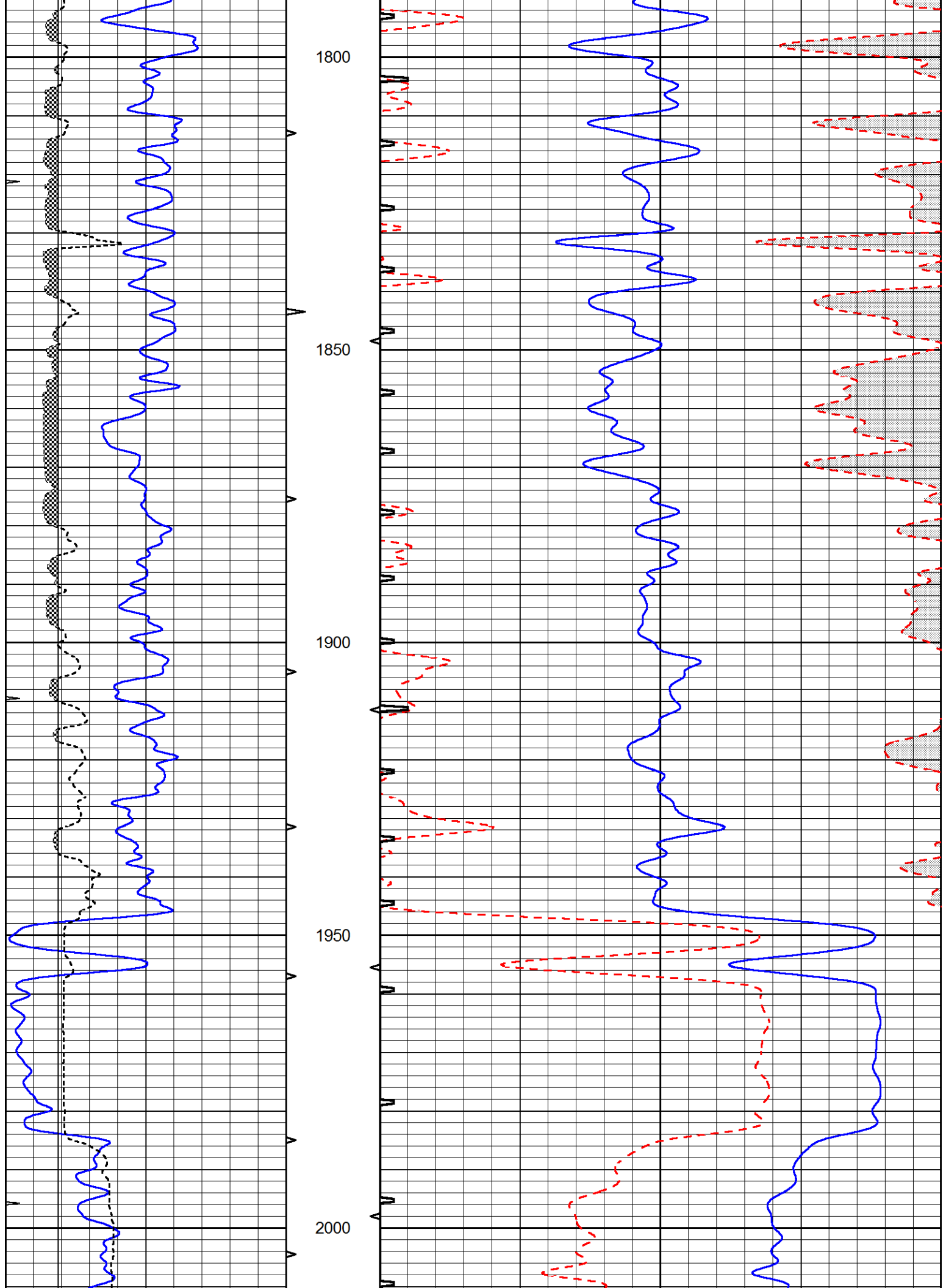


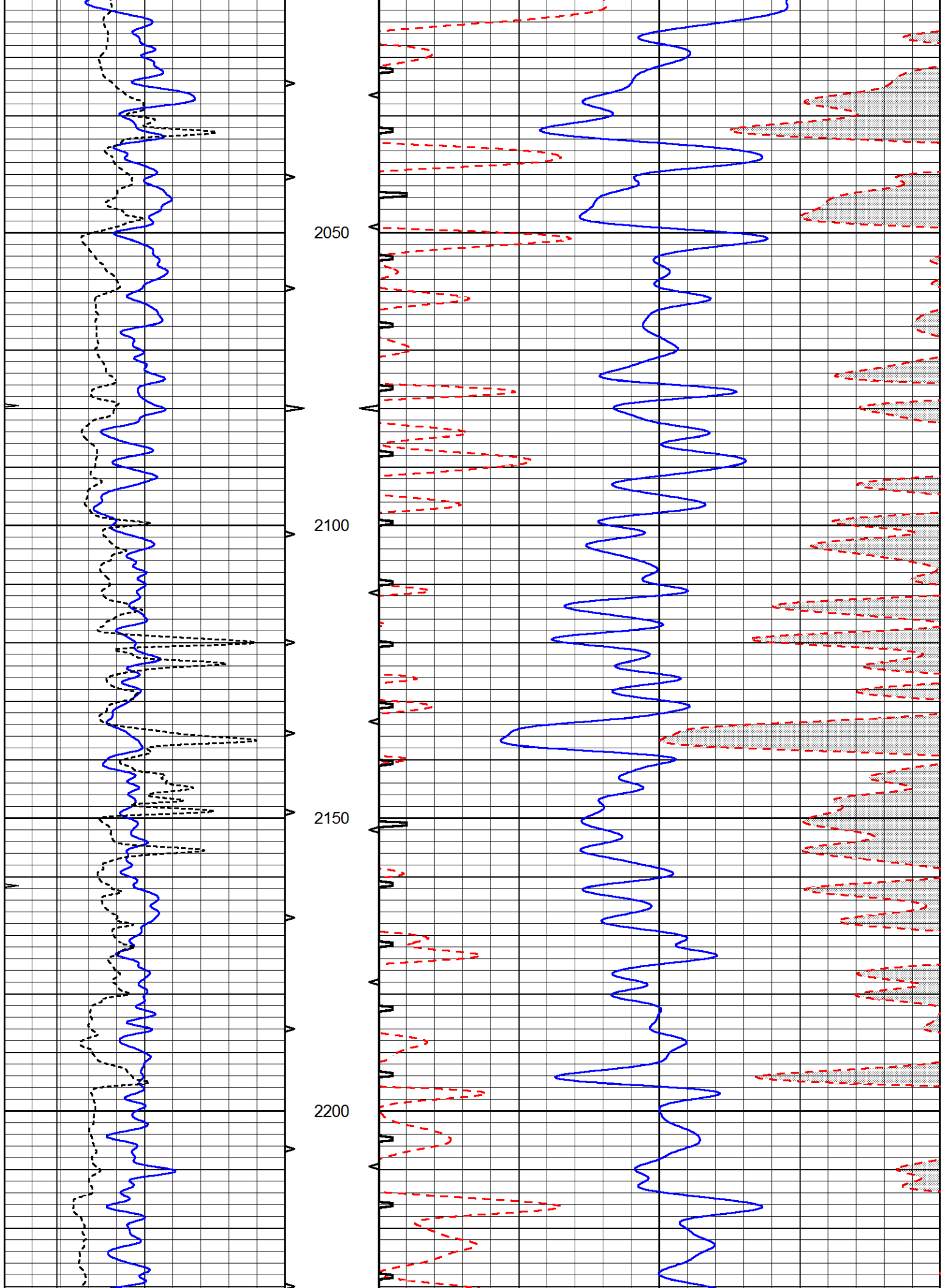


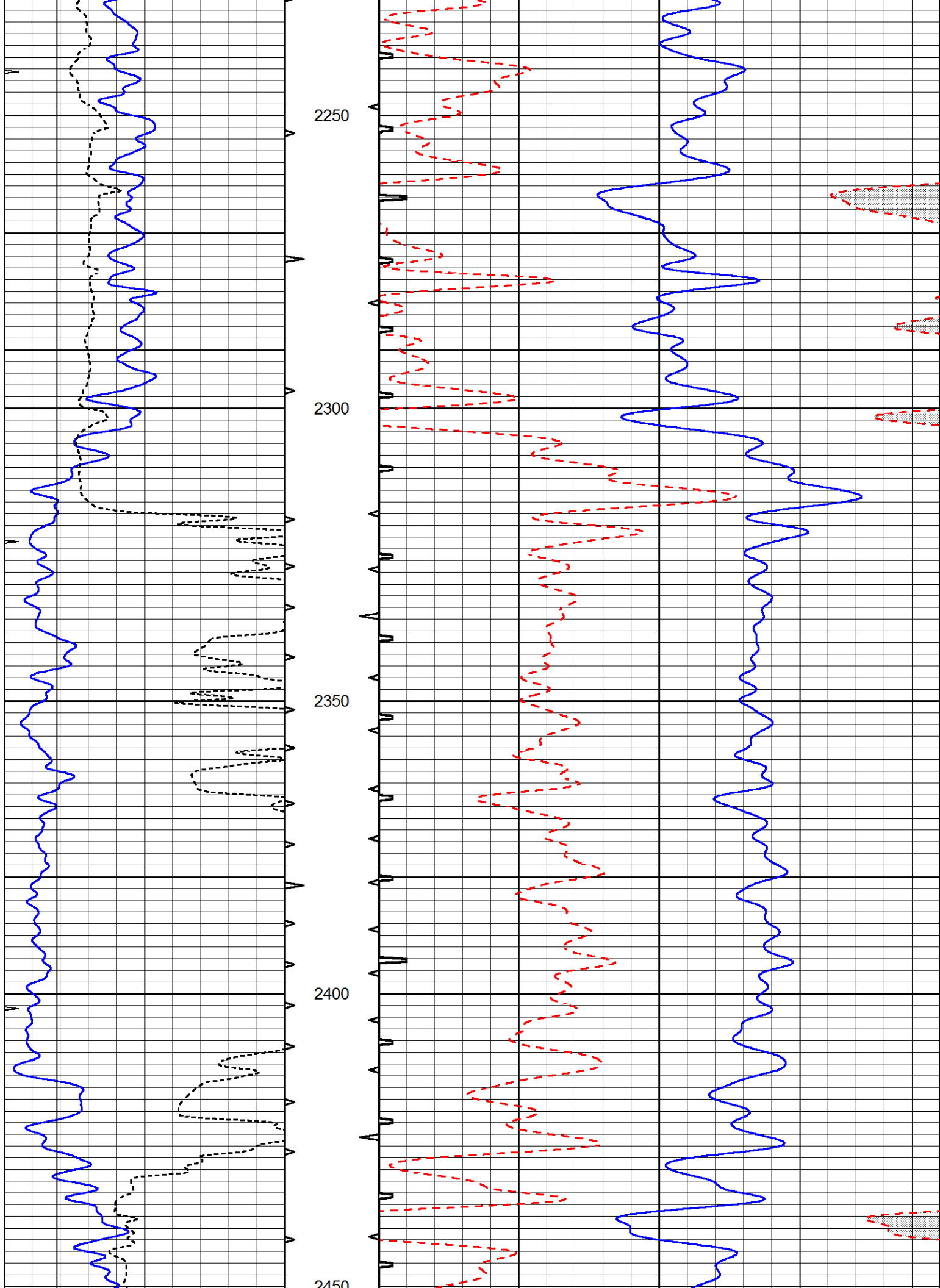


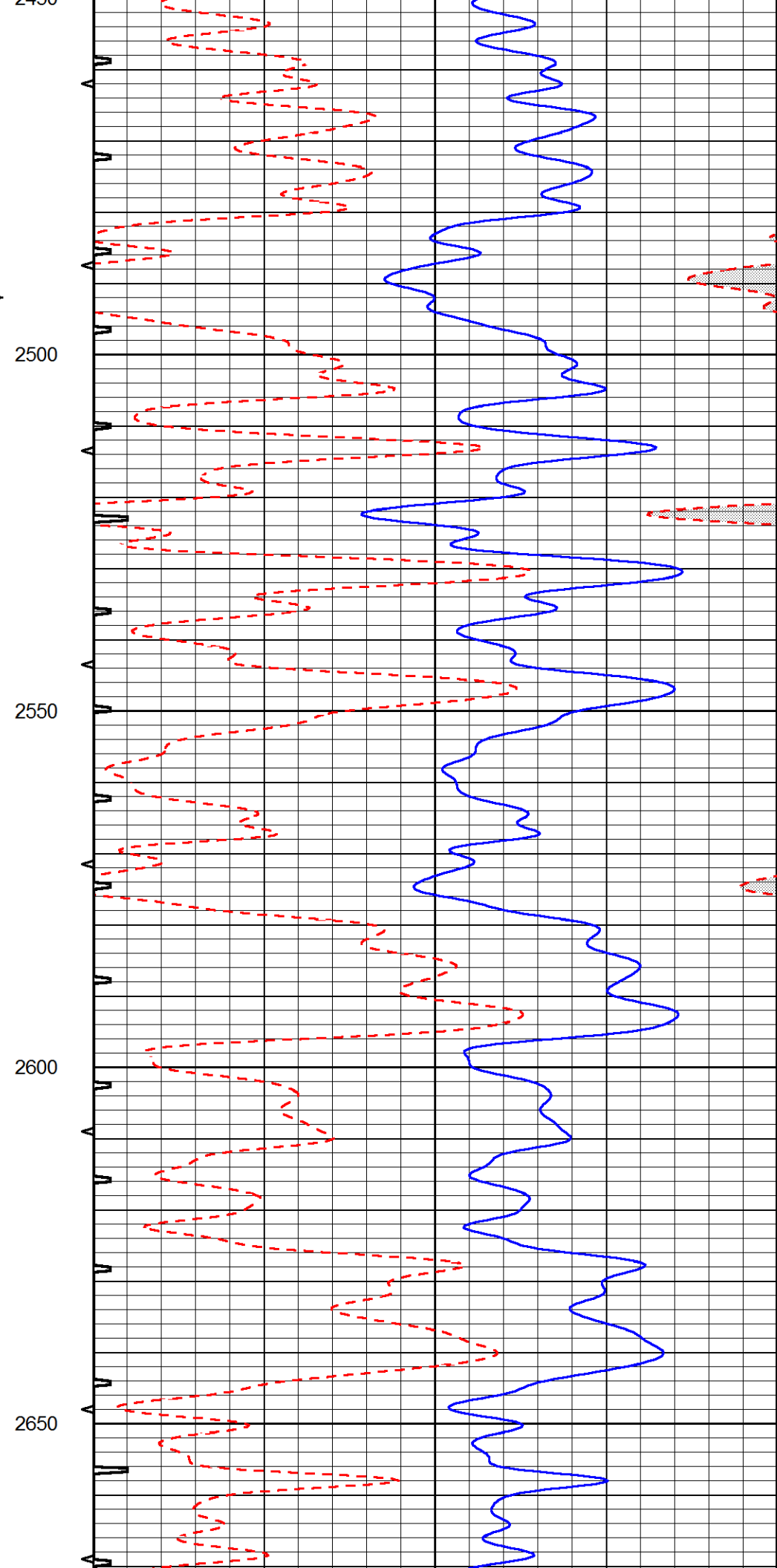
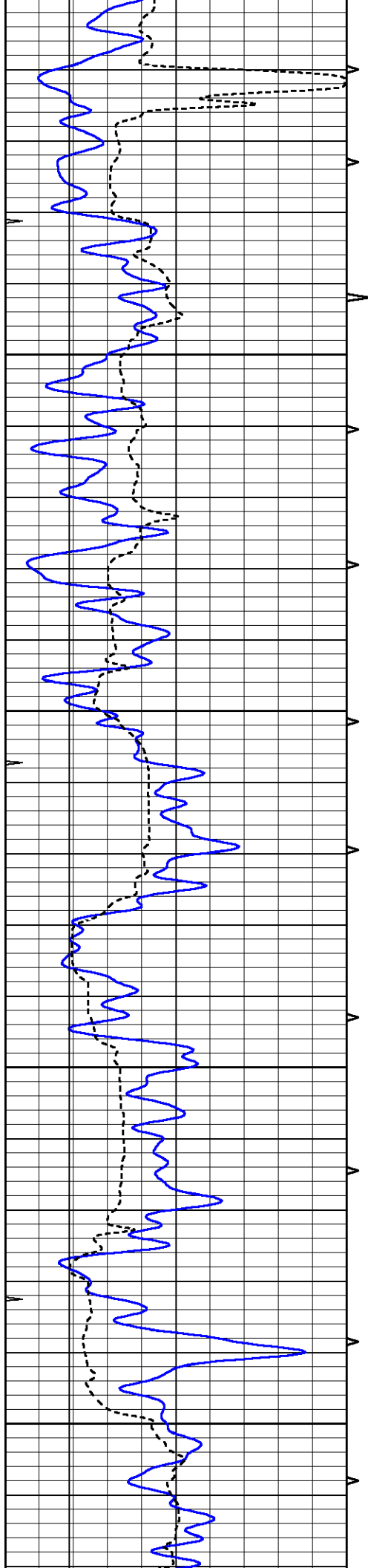


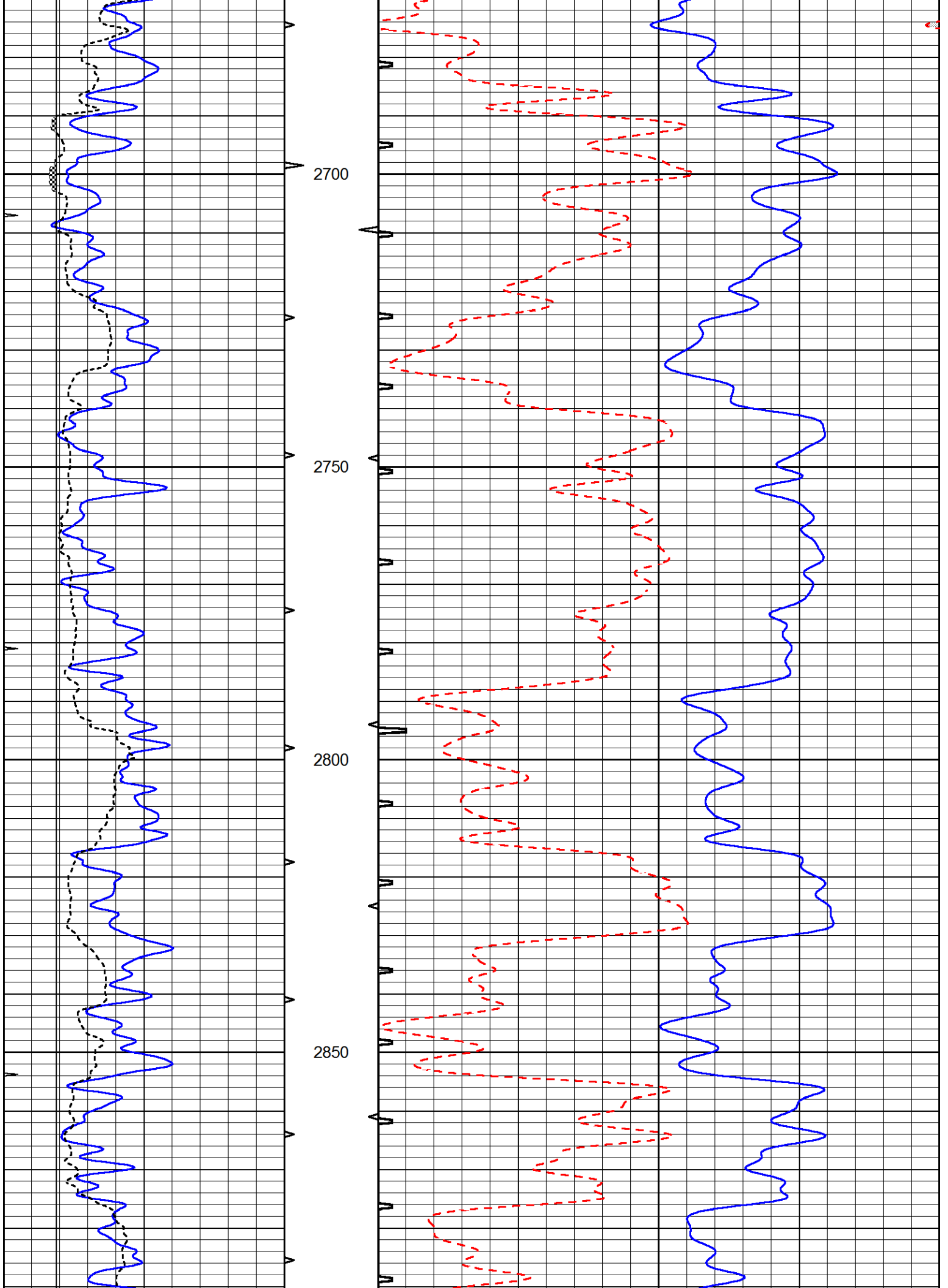


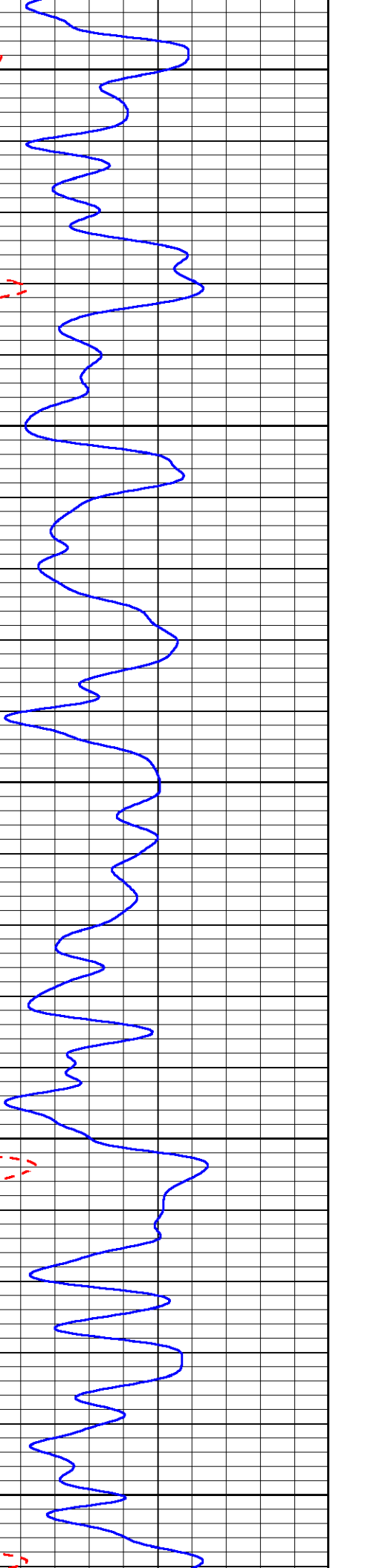
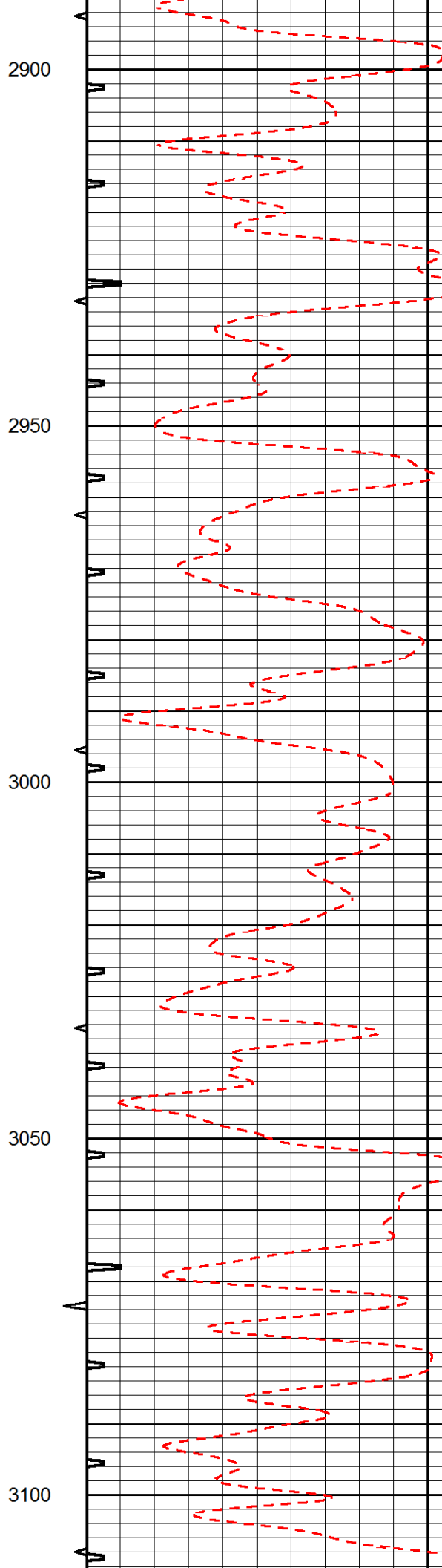
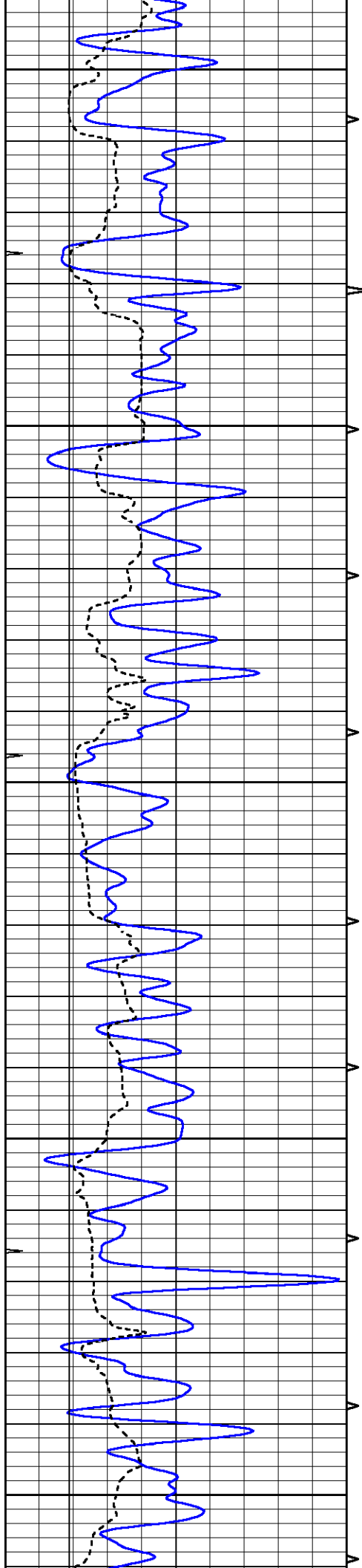


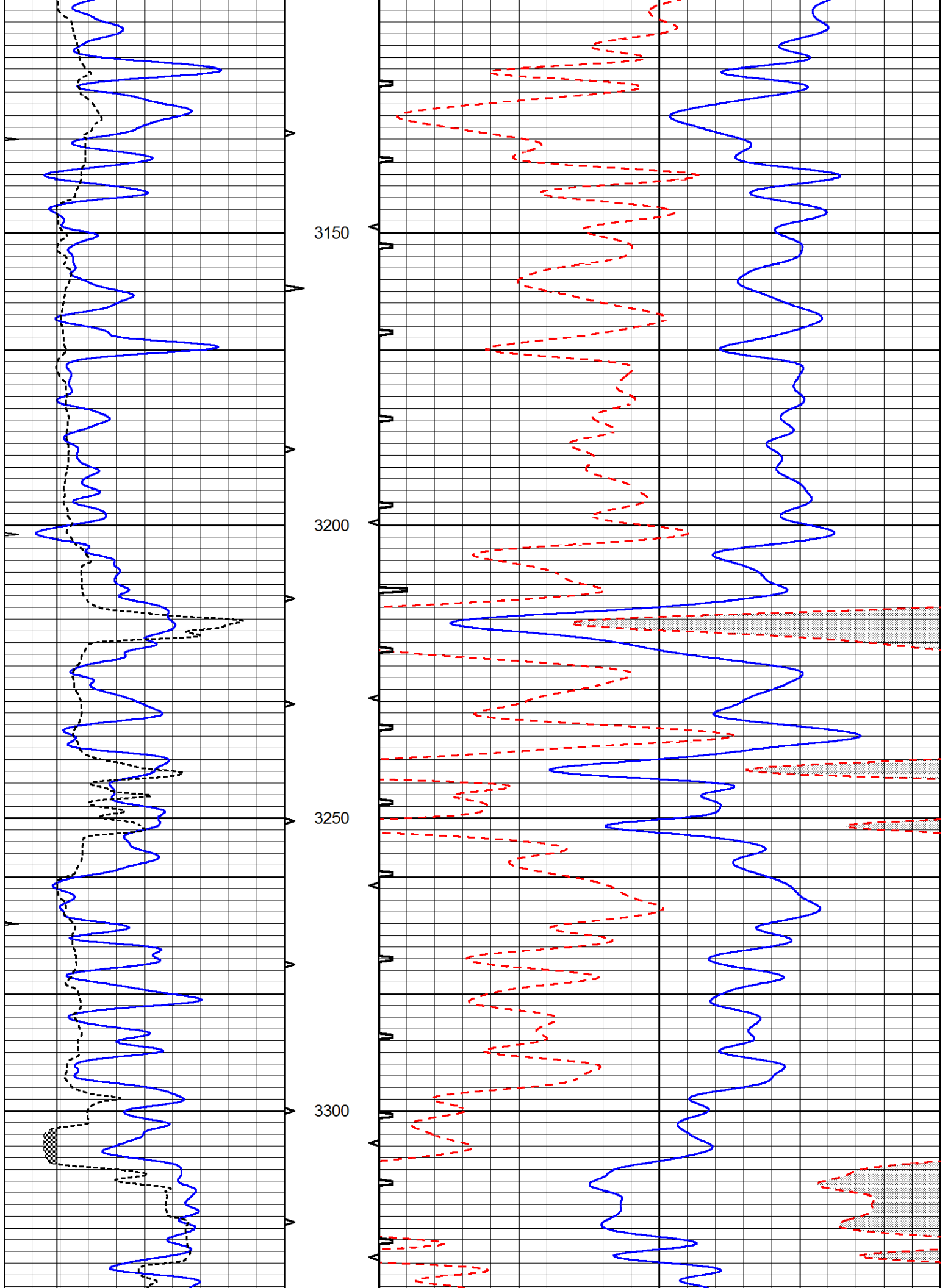


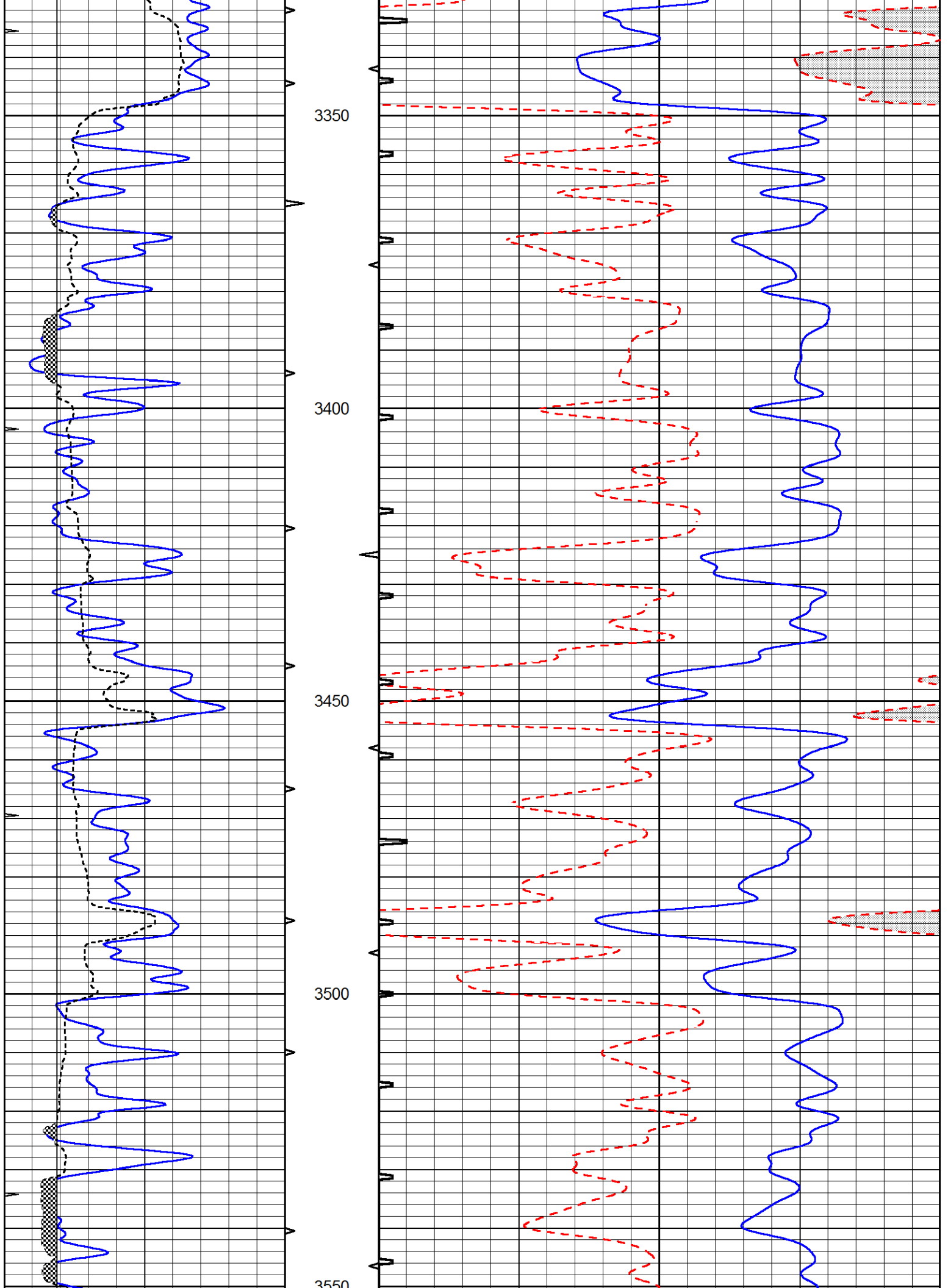


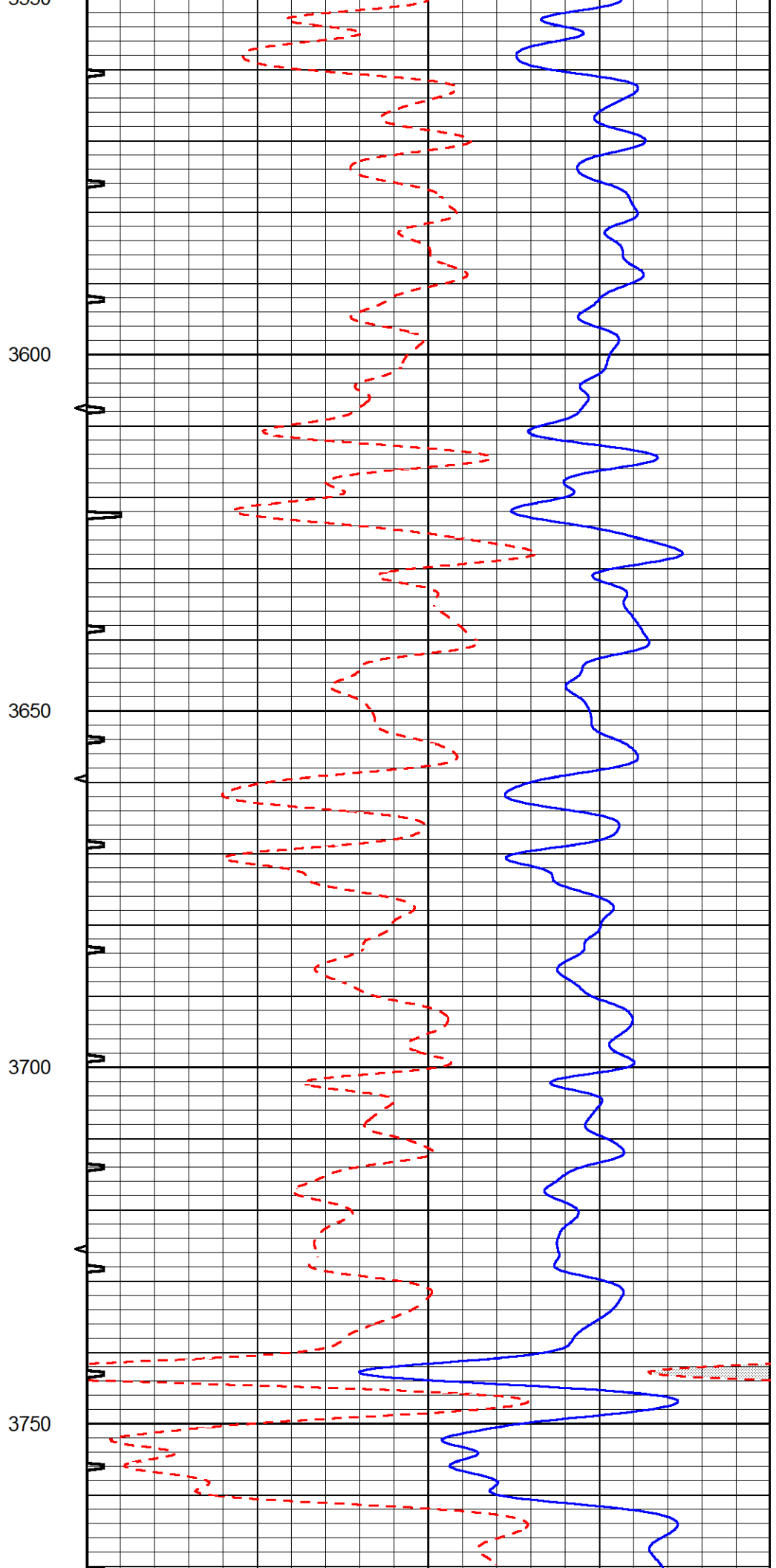
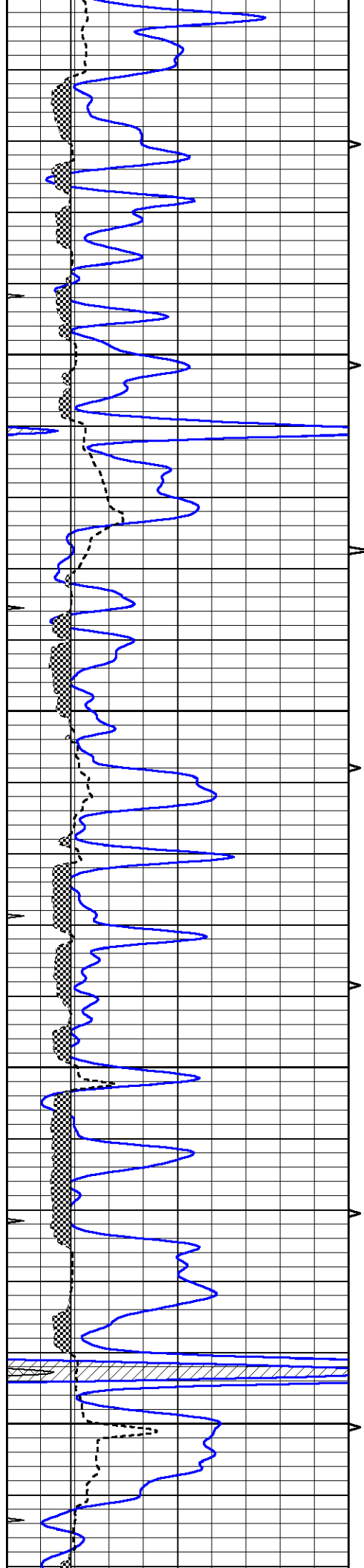


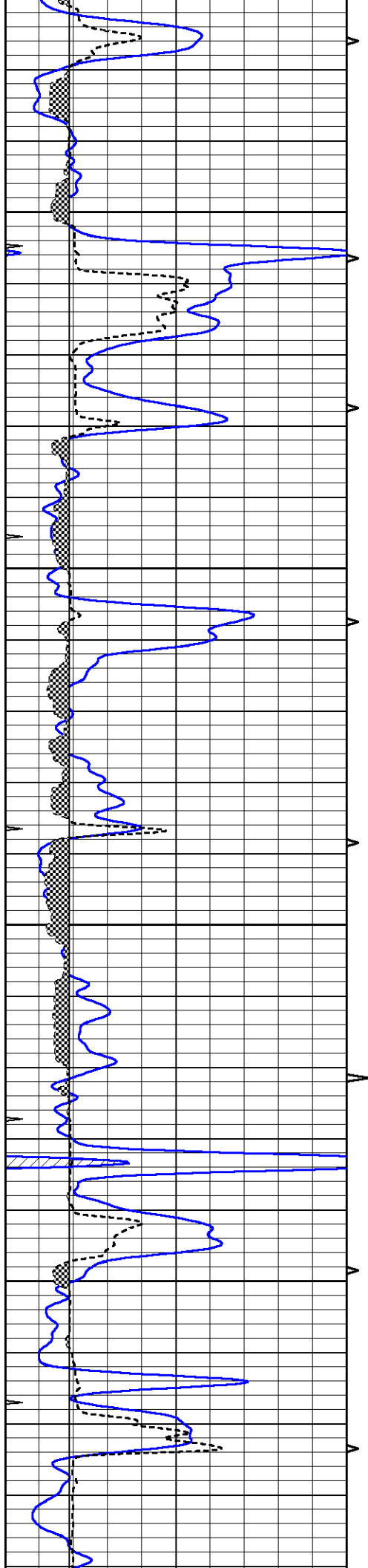










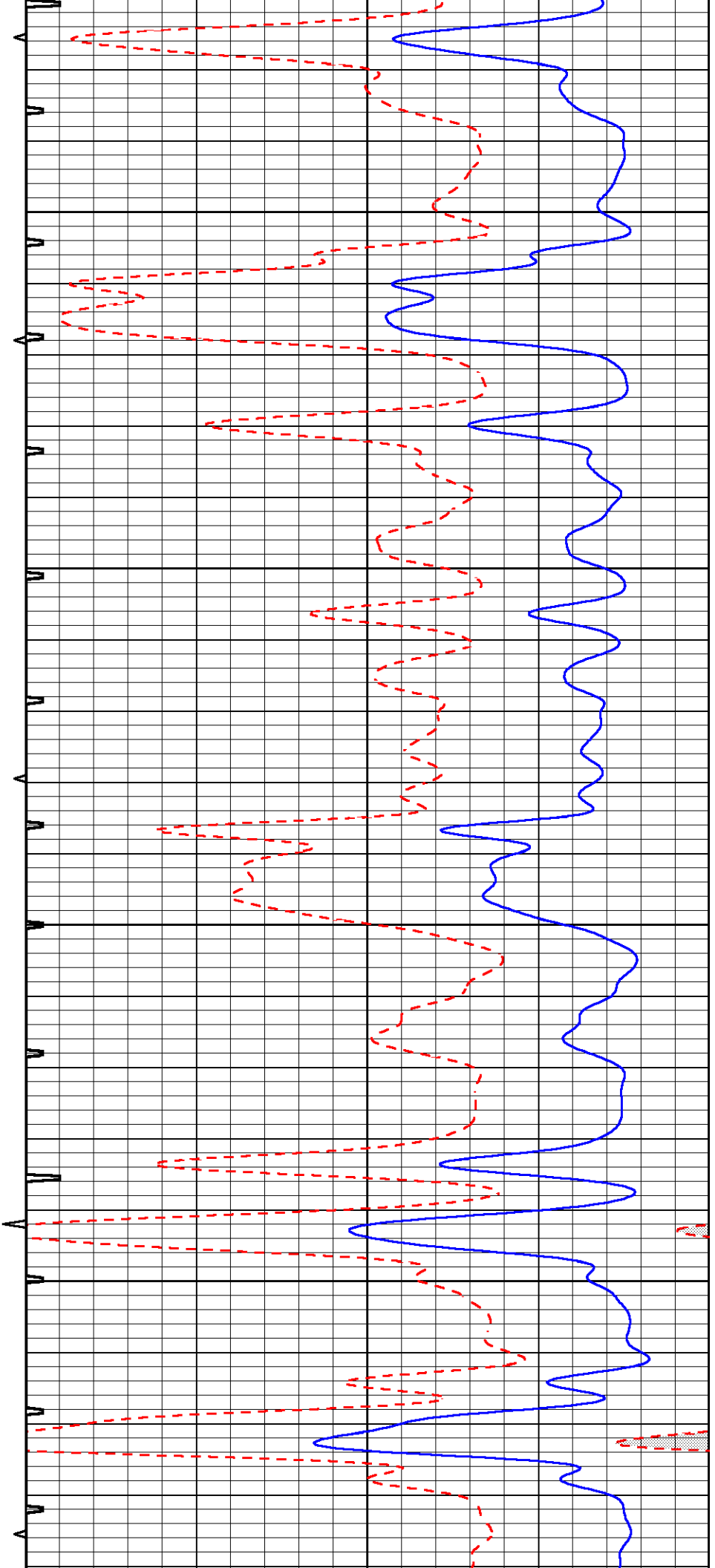


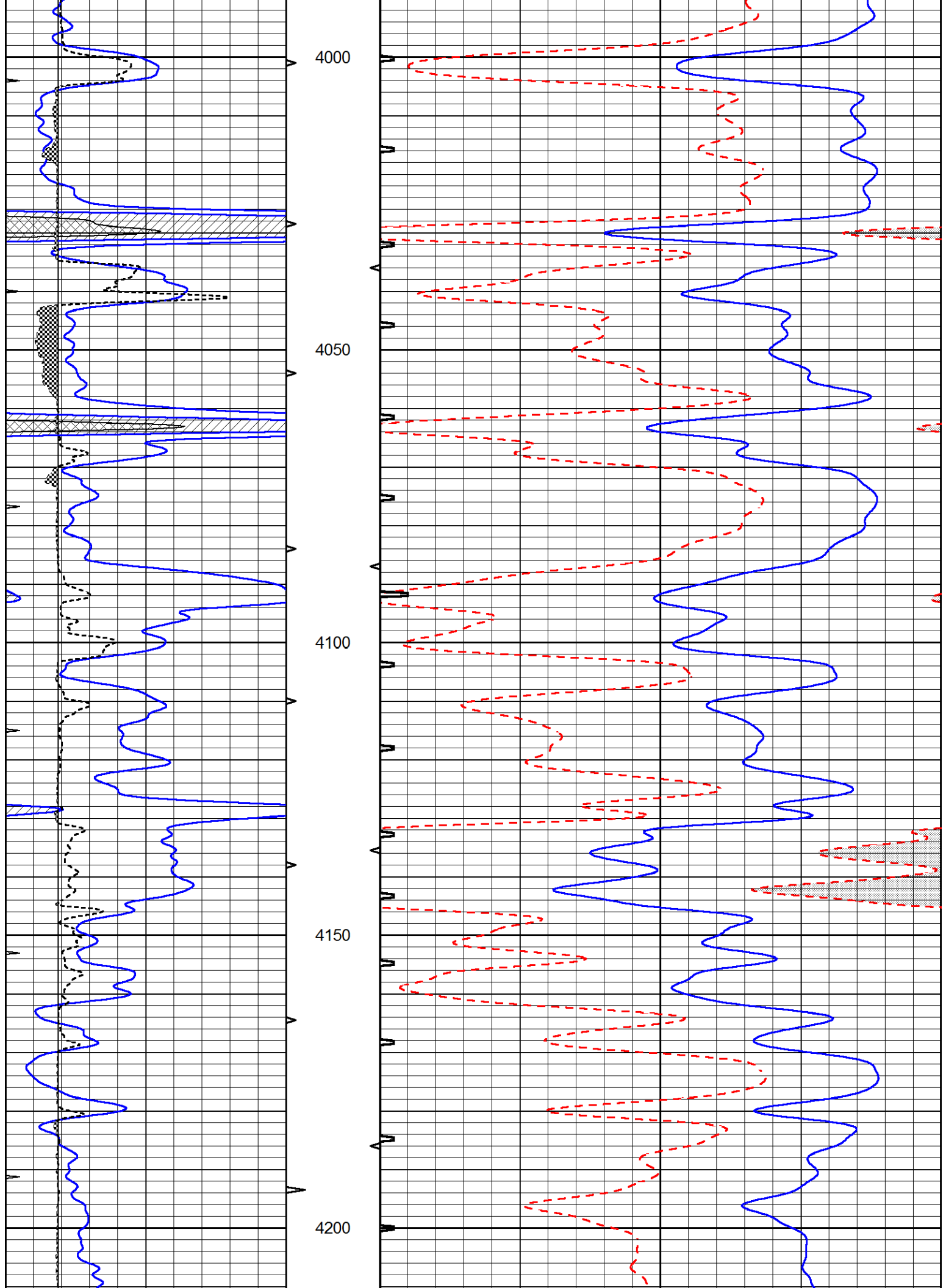
3800

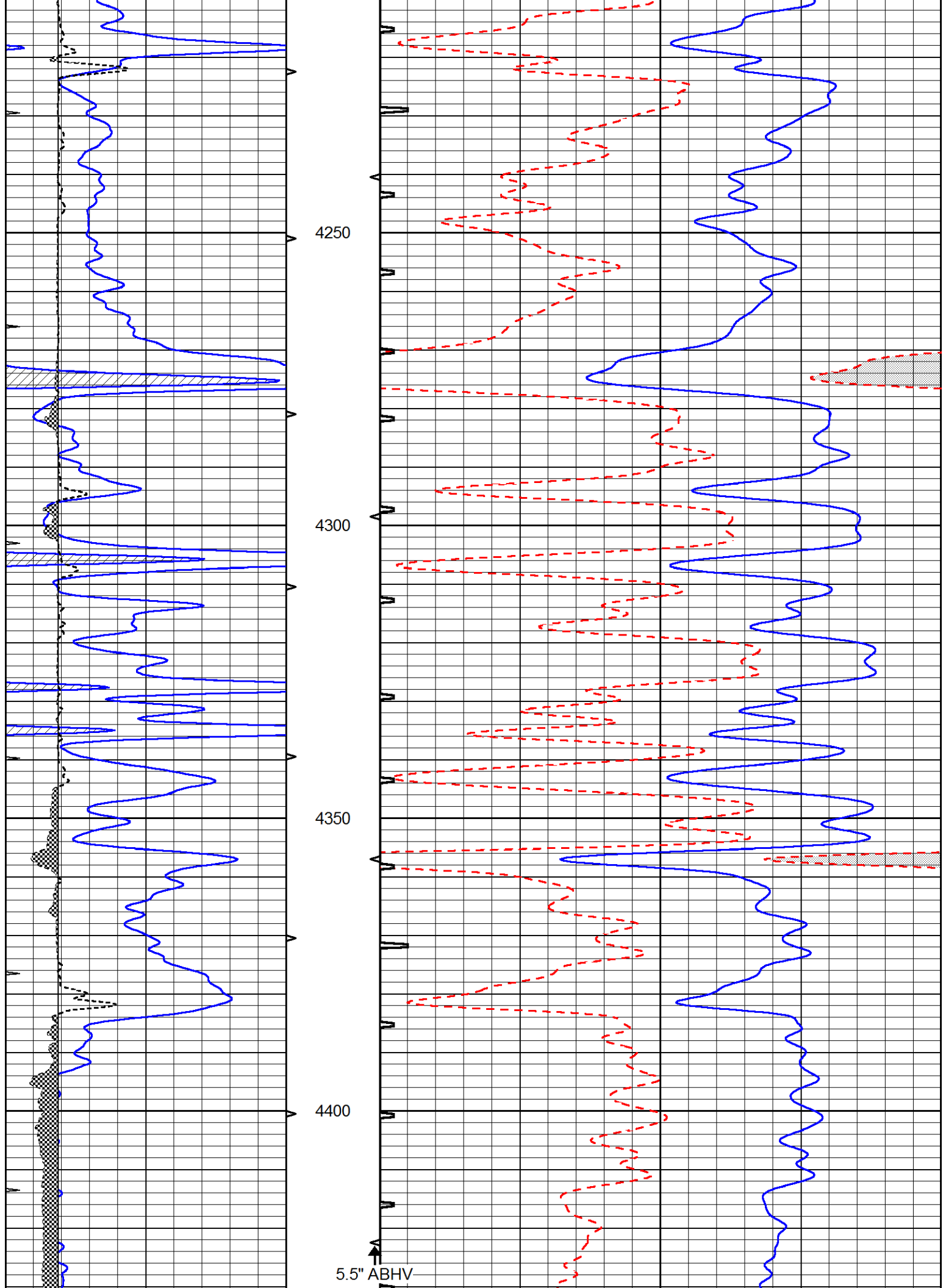
3850

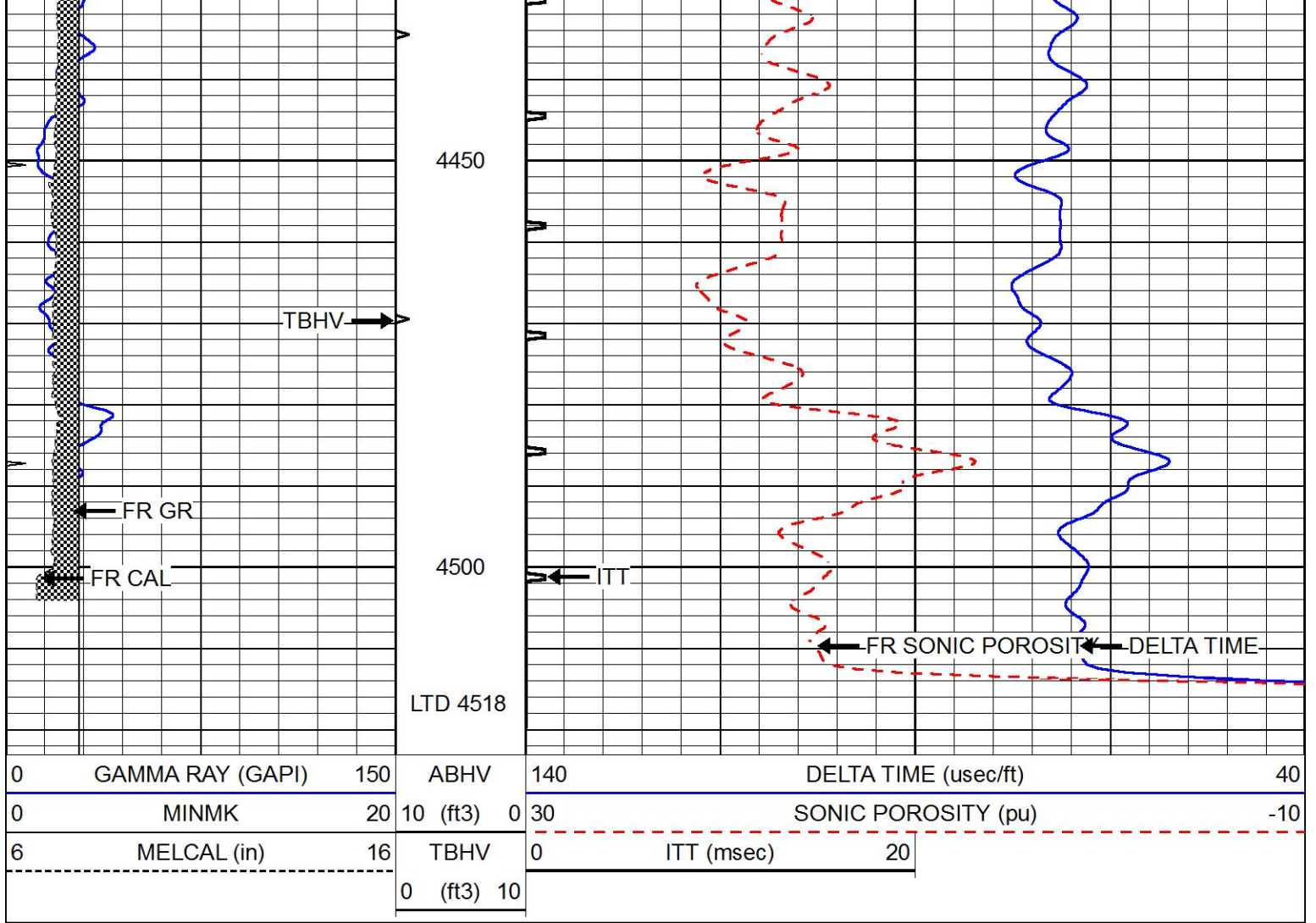
3900

3950





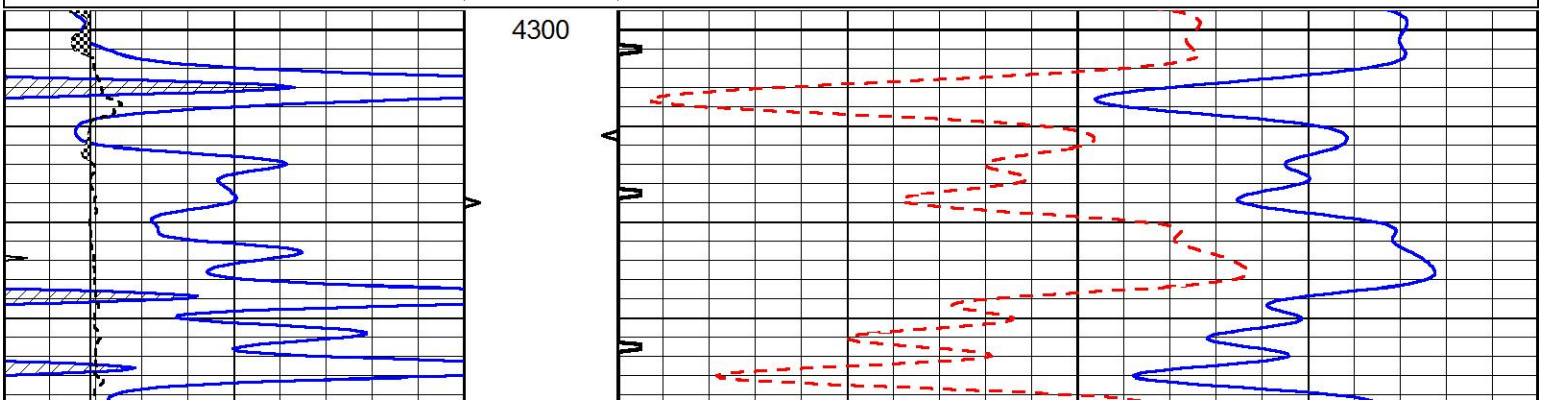


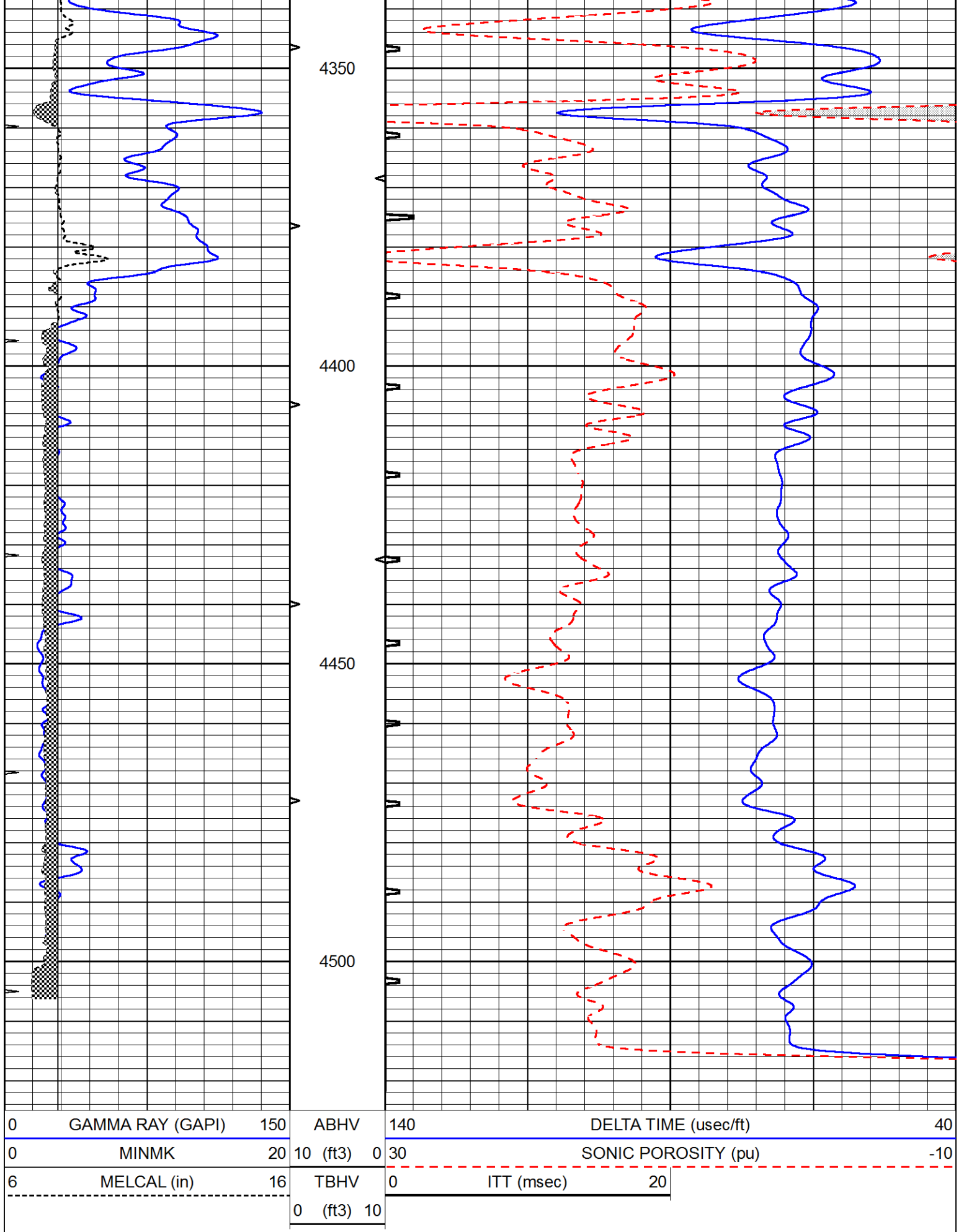


REPEAT SECTION

Database File 7439ddn.db
 Dataset Pathname pass5.3
 Presentation Format _slt
 Dataset Creation Mon Jan 16 07:18:02 2023
 Charted by Depth in Feet scaled 1:240

0	GAMMA RAY (GAPI)	150	ABHV	140	DELTA TIME (usec/ft)	40
0	MINMK	20	10 (ft3) 0	30	SONIC POROSITY (pu)	-10
6	MELCAL (in)	16	TBHV	0	ITT (msec)	20
			0 (ft3) 10			





0	GAMMA RAY (GAPI)	150	ABHV	140	DELTA TIME (u-sec/ft)	40	
0	MINMK	20	10 (ft3)	0	30	SONIC POROSITY (pu)	-10
6	MELCAL (in)	16	TBHV	0	ITT (msec)	20	
			0 (ft3)	10			