

MICRO LOG



Company L. D. DRILLING, INC.  
 Well #35-1 MIDDLETON  
 Field WHITNEY SOUTHWEST  
 County GOVE State KANSAS

Location: API #: 15-063-22423-0000  
 1466' FSL & 1868' FEL  
 SW - SE - NW - SE  
 SEC 35 TWP 15S RGE 27W  
 Permanent Datum GROUND LEVEL Elevation 2523  
 Log Measured From KELLY BUSHING 5' A.G.L.  
 Drilling Measured From KELLY BUSHING  
 Other Services CDL/CNL DIL/SONIC  
 Elevation K.B. 2528 D.F. 2526 G.L. 2523

|                              |               |
|------------------------------|---------------|
| Date                         | 1/16/23       |
| Run Number                   | TWO           |
| Depth Driller                | 4517          |
| Depth Logger                 | 4518          |
| Bottom Logged Interval       | 4502          |
| Top Log Interval             | 3600          |
| Casing Driller               | 8 5/8"@306'   |
| Casing Logger                | 306           |
| Bit Size                     | 7 7/8"        |
| Type Fluid in Hole           | CHEMICAL MUD  |
| Density / Viscosity          | 9.4/49        |
| pH / Fluid Loss              | 8.5/13.6      |
| Source of Sample             | FLOWLINE      |
| Rm @ Meas. Temp              | 1.00@66F      |
| Rmf @ Meas. Temp             | .750@66F      |
| Rmc @ Meas. Temp             | 1.20@66F      |
| Source of Rmf / Rmc          | MEASUREMENT   |
| Rm @ BHT                     | .545@121F     |
| Time Circulation Stopped     | 4 HOURS       |
| Time Logger on Bottom        | 6.45 A.M.     |
| Maximum Recorded Temperature | 121F          |
| Equipment Number             | 8916          |
| Location                     | HAYS, KANSAS  |
| Recorded By                  | JEFF LUEBBERS |
| Witnessed By                 | KIM SHOEMAKER |

<<< Fold Here >>>

All interpretations are opinions based on inferences from electrical or other measurements and we cannot and do not guarantee the accuracy or correctness of any interpretation, and we shall not, except in the case of gross or willful negligence on our part, be liable or responsible for any loss, costs, damages, or expenses incurred or sustained by anyone resulting from any interpretation made by any of our officers, agents or employees. These interpretations are also subject to our general terms and conditions set out in our current Price Schedule.

Comments

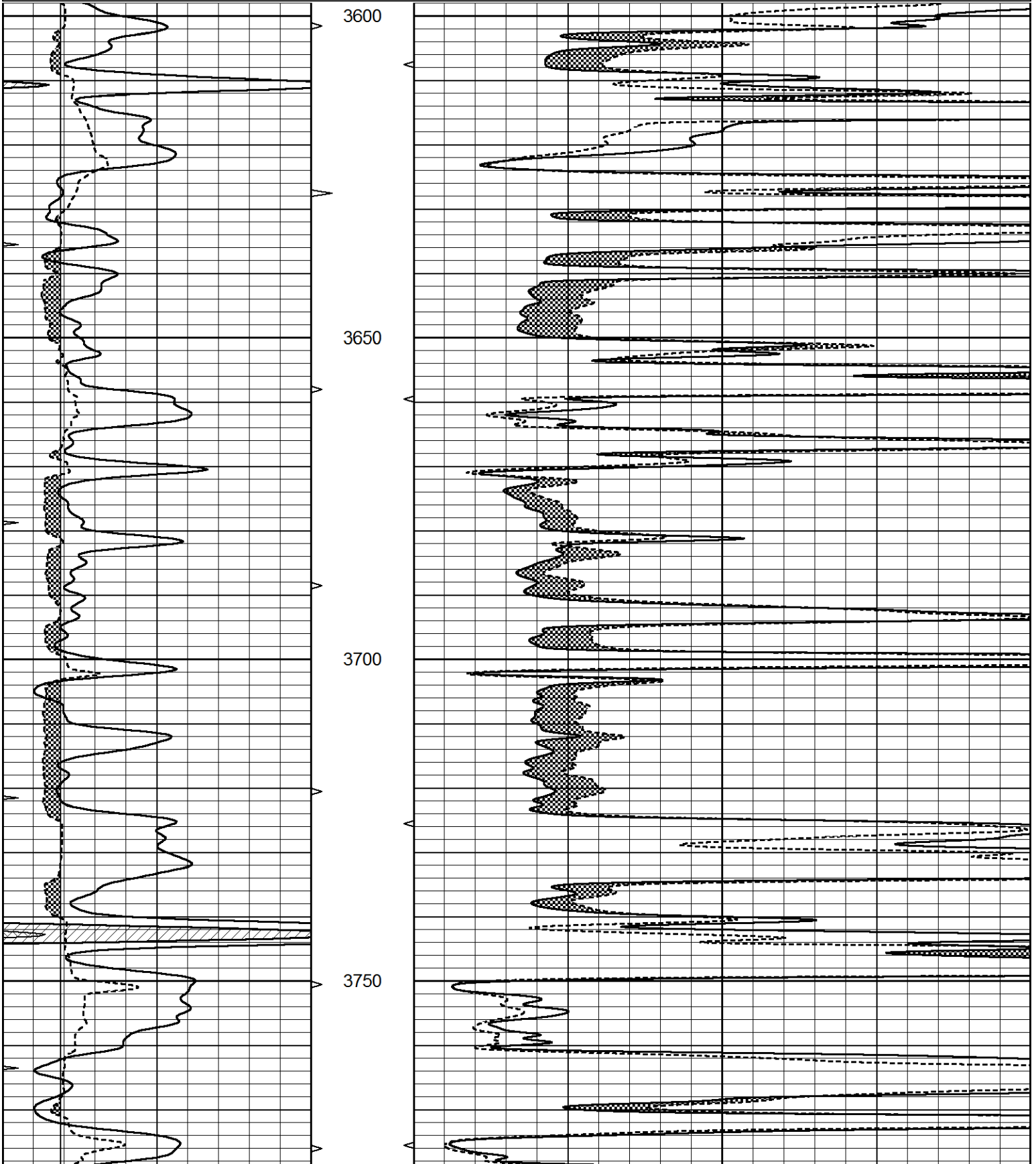
THANK YOU FOR USING ELI WIRELINE, HAYS, KS. (785) 628-6395  
 DIRECTIONS:  
 PENDENNIS, KS., (RED CHIEF RD. & HWY 4) 6N. TO "RD.C", 1 1/2E. TO CURVE, CONTINUE 1 MORE EAST THROUGH CATTLE GUARD ON TRAIL, TRAIL TURNS SOUTH 2 MORE MILES TO LOCATION

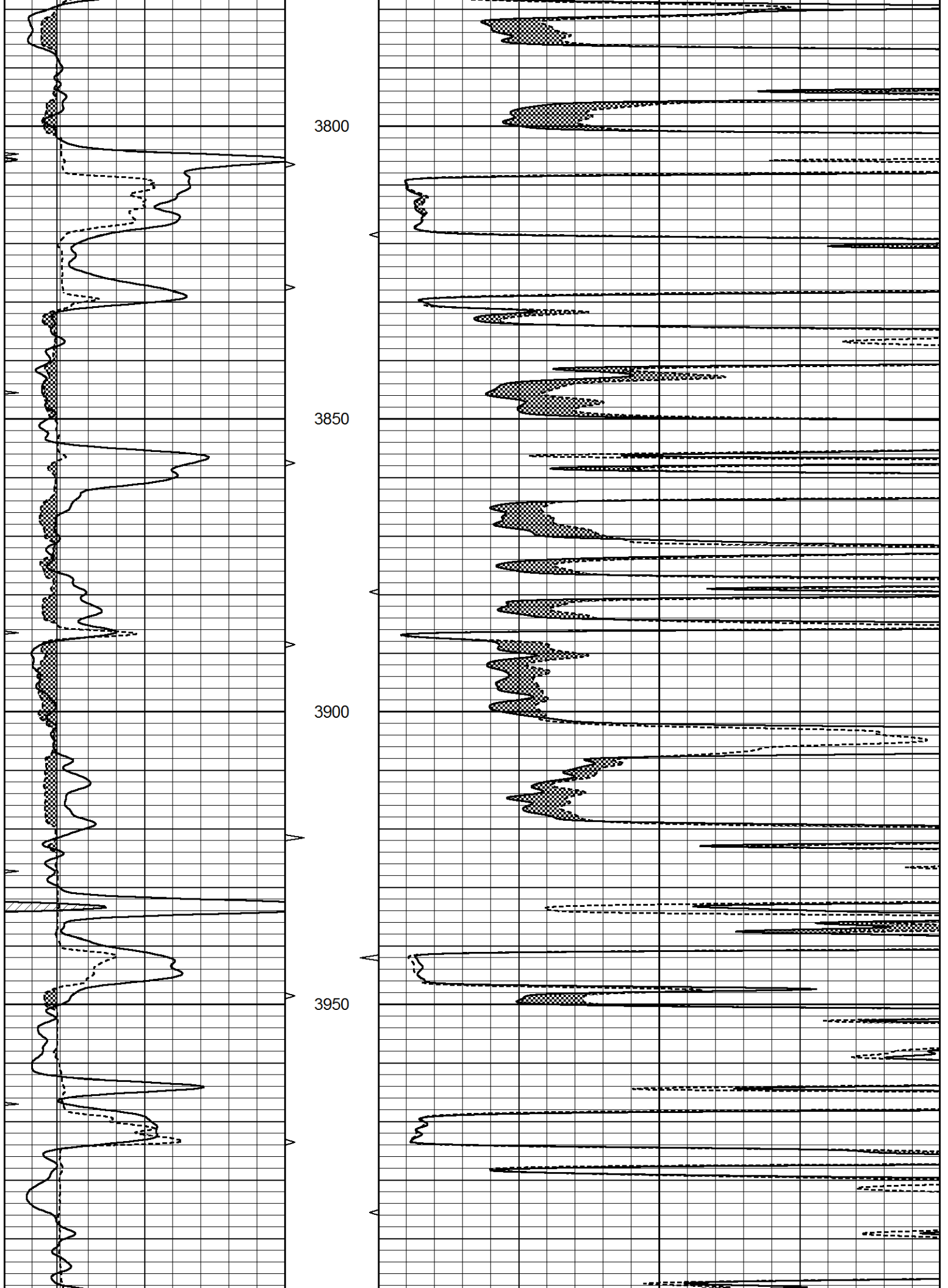


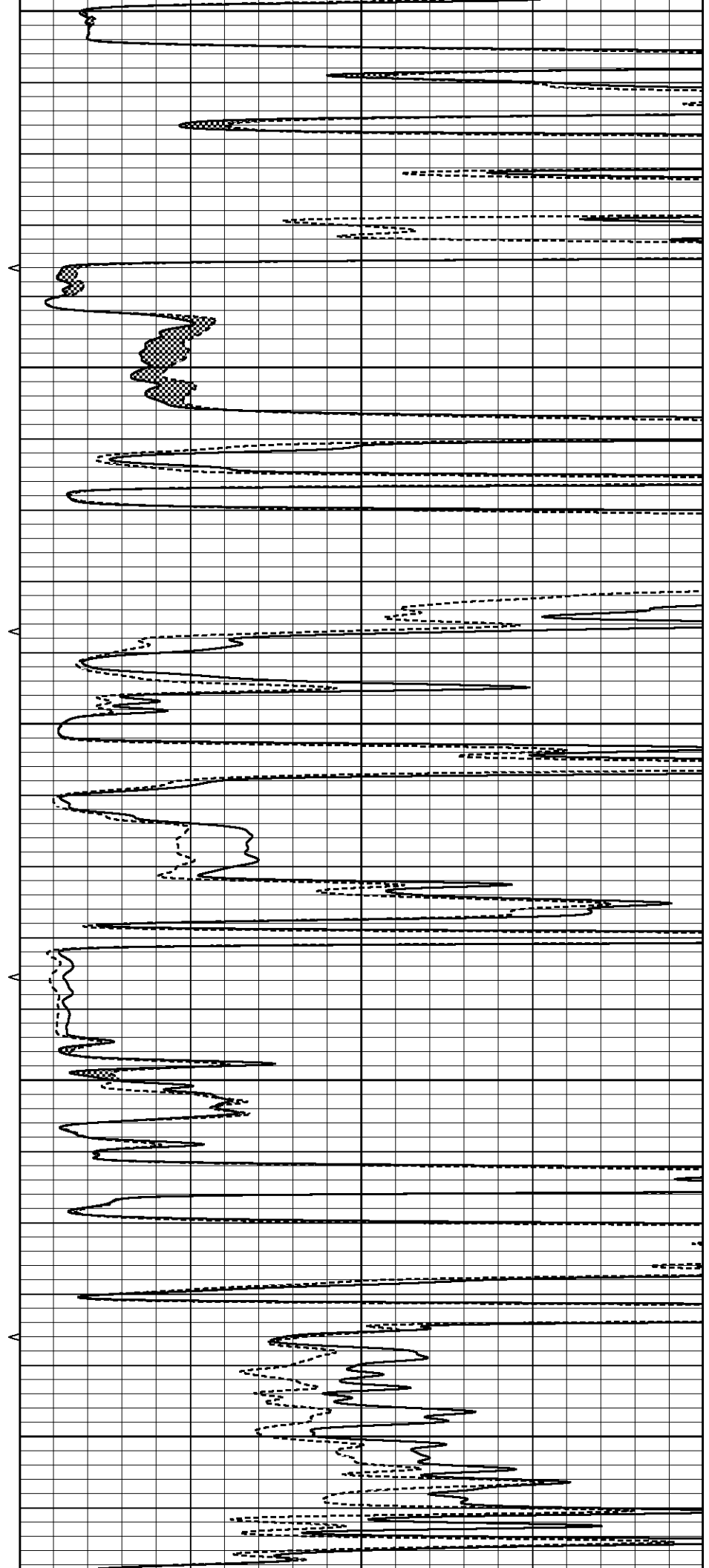
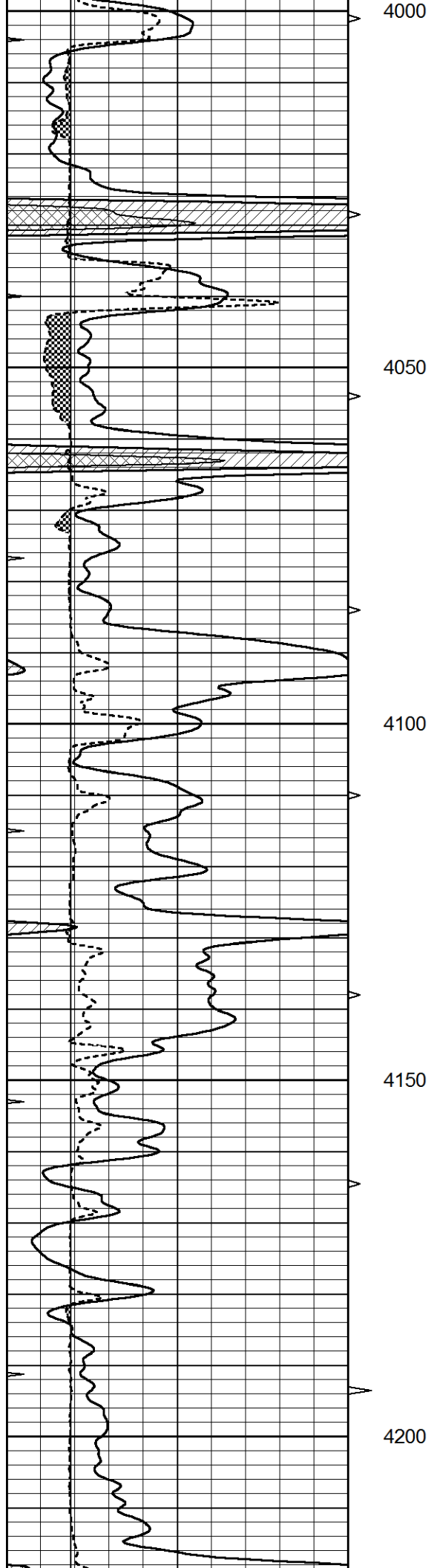
MAIN SECTION

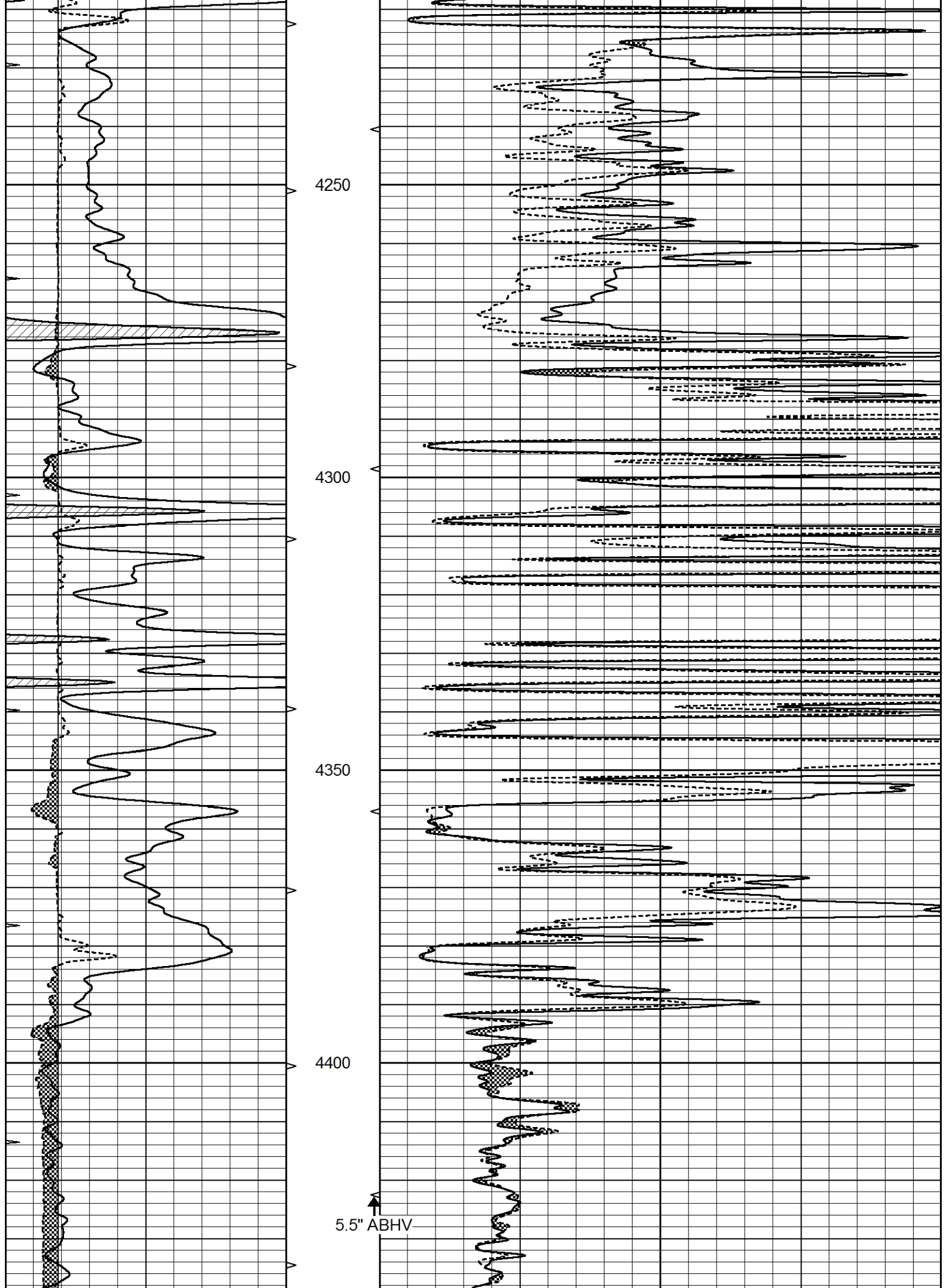
Database File 7439ddn.db  
 Dataset Pathname pass6.1  
 Presentation Format \_micro  
 Dataset Creation Mon Jan 16 07:42:57 2023  
 Charted by Depth in Feet scaled 1:240

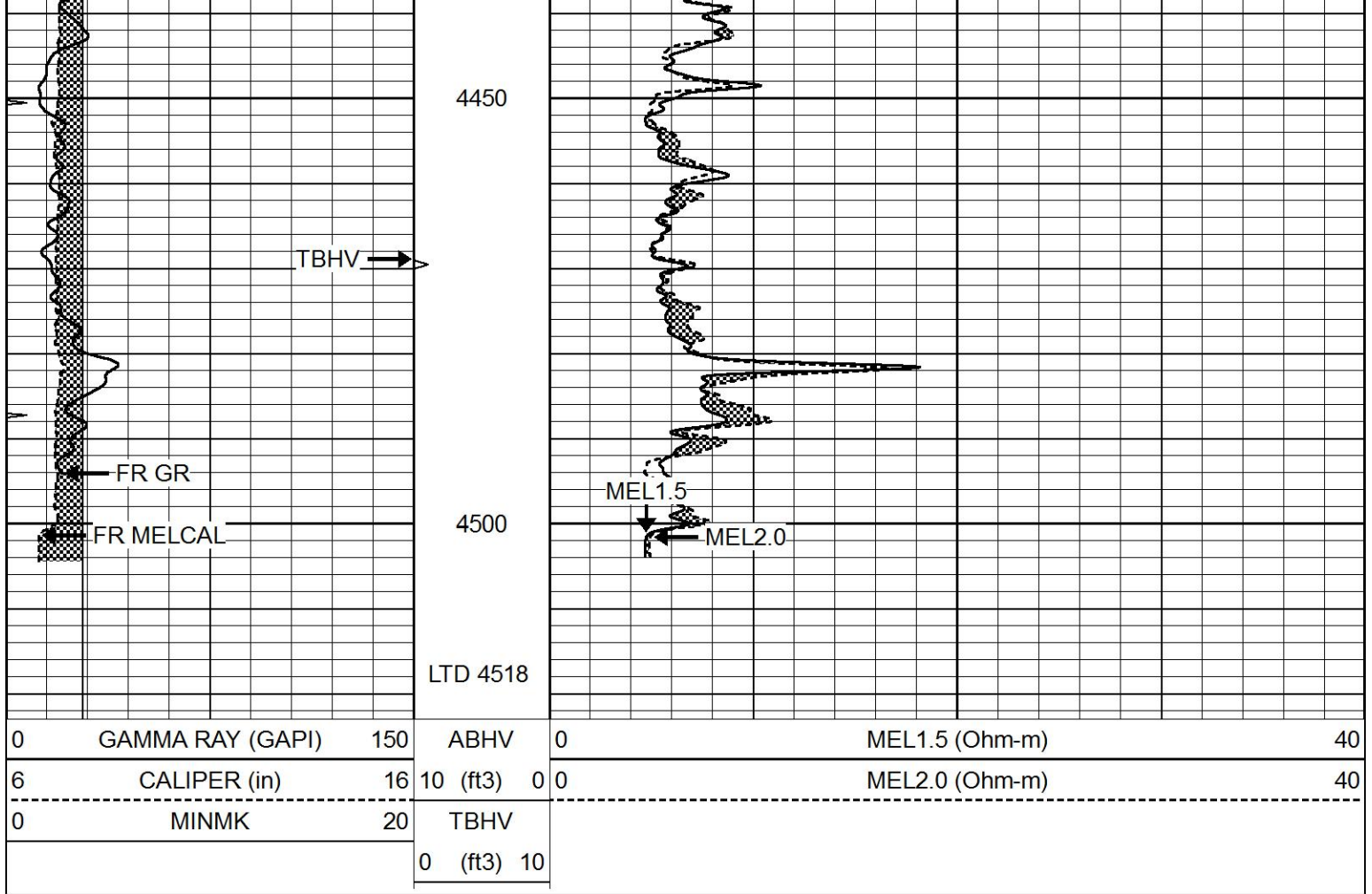
|   |                  |     |          |    |                |    |
|---|------------------|-----|----------|----|----------------|----|
| 0 | GAMMA RAY (GAPI) | 150 | ABHV     | 0  | MEL1.5 (Ohm-m) | 40 |
| 6 | CALIPER (in)     | 16  | 10 (ft3) | 0  | MEL2.0 (Ohm-m) | 40 |
| 0 | MINMK            | 20  | TBHV     |    |                |    |
|   |                  |     | 0 (ft3)  | 10 |                |    |







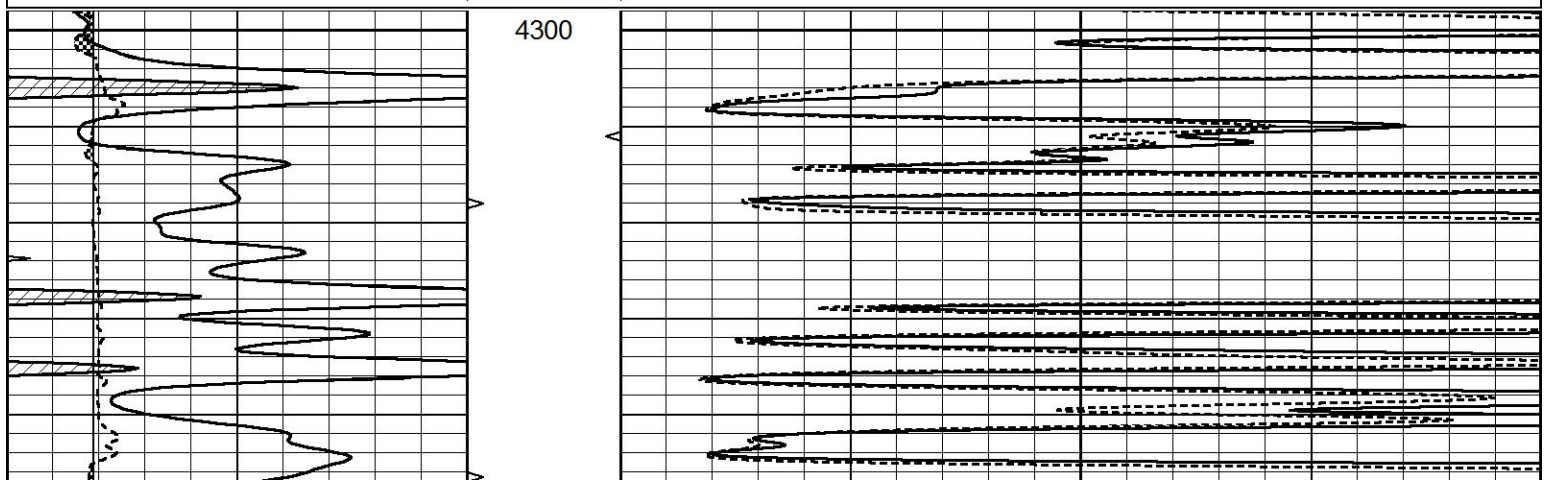


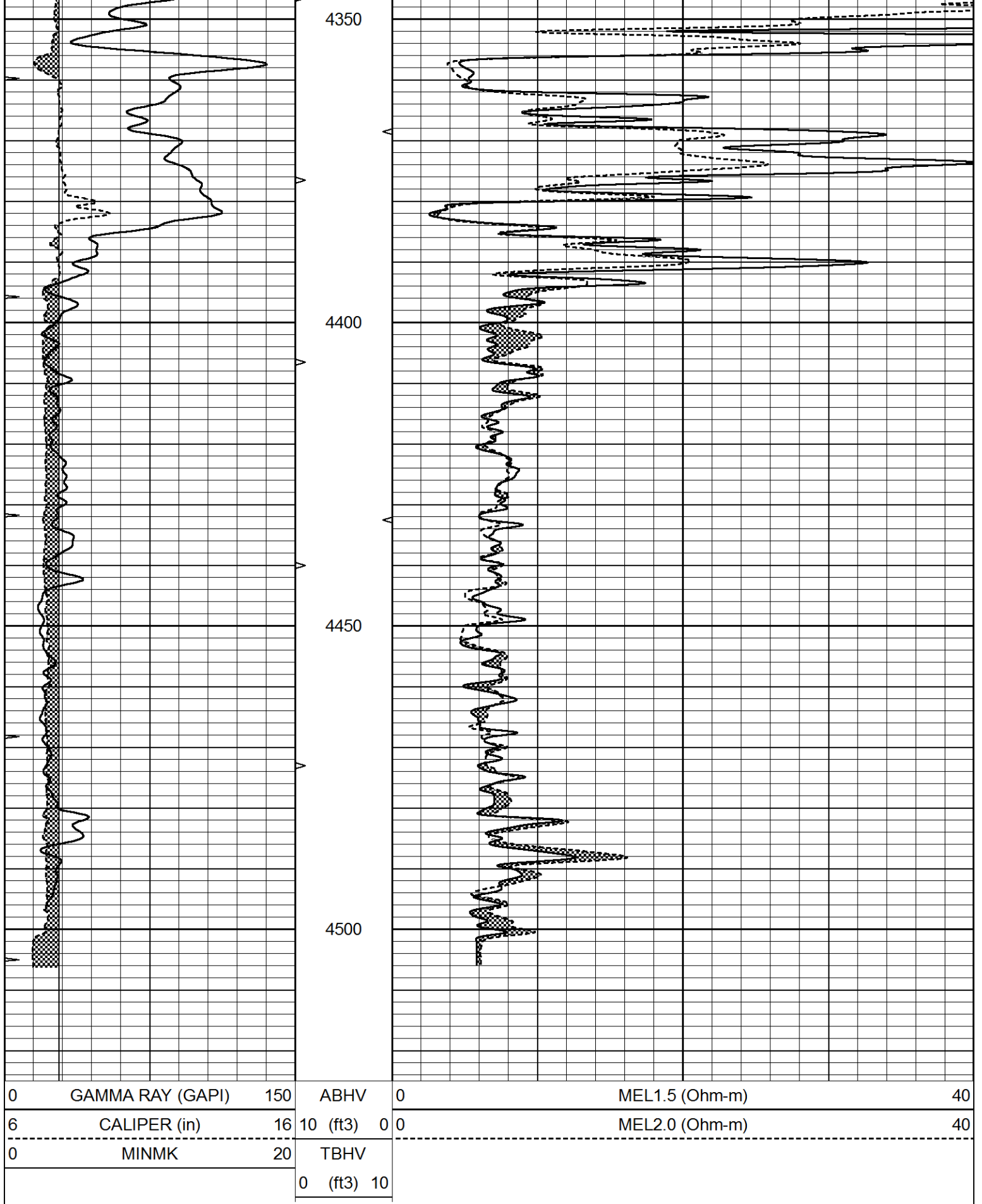


# REPEAT SECTION

Database File 7439ddn.db  
 Dataset Pathname pass5.3  
 Presentation Format \_micro  
 Dataset Creation Mon Jan 16 07:18:02 2023  
 Charted by Depth in Feet scaled 1:240

|   |                  |     |          |     |                |    |
|---|------------------|-----|----------|-----|----------------|----|
| 0 | GAMMA RAY (GAPI) | 150 | ABHV     | 0   | MEL1.5 (Ohm-m) | 40 |
| 6 | CALIPER (in)     | 16  | 10 (ft3) | 0 0 | MEL2.0 (Ohm-m) | 40 |
| 0 | MINMK            | 20  | TBHV     |     |                |    |
|   |                  |     | 0 (ft3)  | 10  |                |    |





Calibration Report

Database File 7439ddn.db  
 Dataset Pathname pass6.1  
 Dataset Creation Mon Jan 16 07:42:57 2023

MICRO Calibration Report

|                |                          |
|----------------|--------------------------|
| Serial Number: | MICRO5                   |
| Tool Model:    | PROBE                    |
| Performed:     | Mon Jan 16 07:14:20 2023 |

|                      |            |                |
|----------------------|------------|----------------|
| Caliper Calibration: | Gain=3.478 | Offset=-10.087 |
|                      | Low Cal    | High Cal       |
| References           | 8.000      | 16.000         |
| Readings             | 5.200      | 7.500          |

|                   |             |               |
|-------------------|-------------|---------------|
| 1.5" Calibration: | Gain=42.000 | Offset=-0.500 |
|                   | Low Cal     | High Cal      |
| References        | 0.000       | 20.000        |
| Readings          | 0.015       | 1.007         |

|                 |             |               |
|-----------------|-------------|---------------|
| 2" Calibration: | Gain=60.000 | Offset=-1.000 |
|                 | Low Cal     | High Cal      |
| References      | 0.000       | 20.000        |
| Readings        | 0.008       | 0.908         |

Gamma Ray Calibration Report

|                |                          |
|----------------|--------------------------|
| Serial Number: | GR5                      |
| Tool Model:    | OPEN                     |
| Performed:     | Mon Jan 16 07:08:59 2023 |

|                     |        |          |
|---------------------|--------|----------|
| Calibrator Value:   | 1.0    | GAPI     |
| Background Reading: | 0.0    | cps      |
| Calibrator Reading: | 1.0    | cps      |
| Sensitivity:        | 0.5800 | GAPI/cps |