



**COMPENSATED
DENSITY/NEUTRON
LOG**

Company L. D. DRILLING, INC.
Well #35-1 MIDDLETON
Field WHITNEY SOUTHWEST
County GOVE **State** KANSAS

Location: API #: 15-063-22423-0000
 1466' FSL & 1868' FEL
 SW - SE - NW - SE
 SEC 35 TWP 15S RGE 27W
Permanent Datum GROUND LEVEL Elevation 2523
Log Measured From KELLY BUSHING 5' A.G.L.
Drilling Measured From KELLY BUSHING
Other Services DILMEL SONIC
Elevation K.B. 2528
 D.F. 2526
 G.L. 2523

Date	1/16/23
Run Number	ONE
Depth Driller	4517
Depth Logger	4518
Bottom Logged Interval	4494
Top Log Interval	3600
Casing Driller	8 5/8"@306'
Casing Logger	306
Bit Size	7 7/8"
Type Fluid in Hole	CHEMICAL MUD
Density / Viscosity	9.4/49
pH / Fluid Loss	8.5/13.6
Source of Sample	FLOWLINE
Rm @ Meas. Temp	1.00@66F
Rmf @ Meas. Temp	.750@66F
Rmc @ Meas. Temp	1.20@66F
Source of Rmf / Rmc	MEASUREMENT
Rm @ BHT	.545@121F
Time Circulation Stopped	2.5 HOURS
Time Logger on Bottom	4:45 A.M.
Maximum Recorded Temperature	121F
Equipment Number	8916
Location	HAYS, KANSAS
Recorded By	JEFF LUEBBERS
Witnessed By	KIM SHOEMAKER

<<< Fold Here >>>

All interpretations are opinions based on inferences from electrical or other measurements and we cannot and do not guarantee the accuracy or correctness of any interpretation, and we shall not, except in the case of gross or willful negligence on our part, be liable or responsible for any loss, costs, damages, or expenses incurred or sustained by anyone resulting from any interpretation made by any of our officers, agents or employees. These interpretations are also subject to our general terms and conditions set out in our current Price Schedule.

Comments

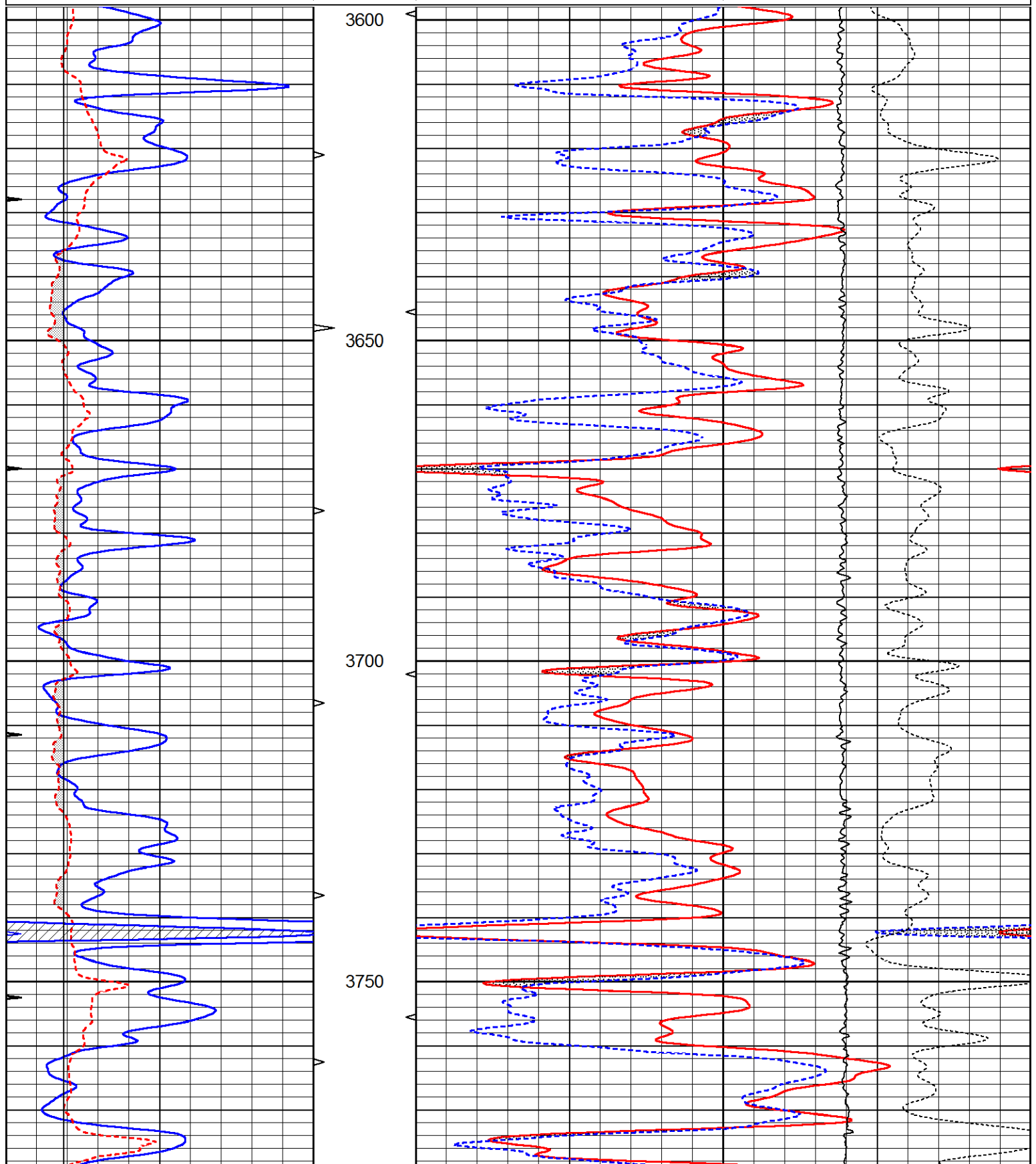
THANK YOU FOR USING ELI WIRELINE, HAYS, KS. (785) 628-6395
 DIRECTIONS:
 PENDENNIS, KS., (RED CHIEF RD. & HWY 4) 6N. TO "RD.C", 1 1/2E. TO CURVE, CONTINUE 1 MORE EAST THROUGH CATTLE GUARD ON TRAIL, TRAIL TURNS SOUTH 2 MORE MILES TO LOCATION

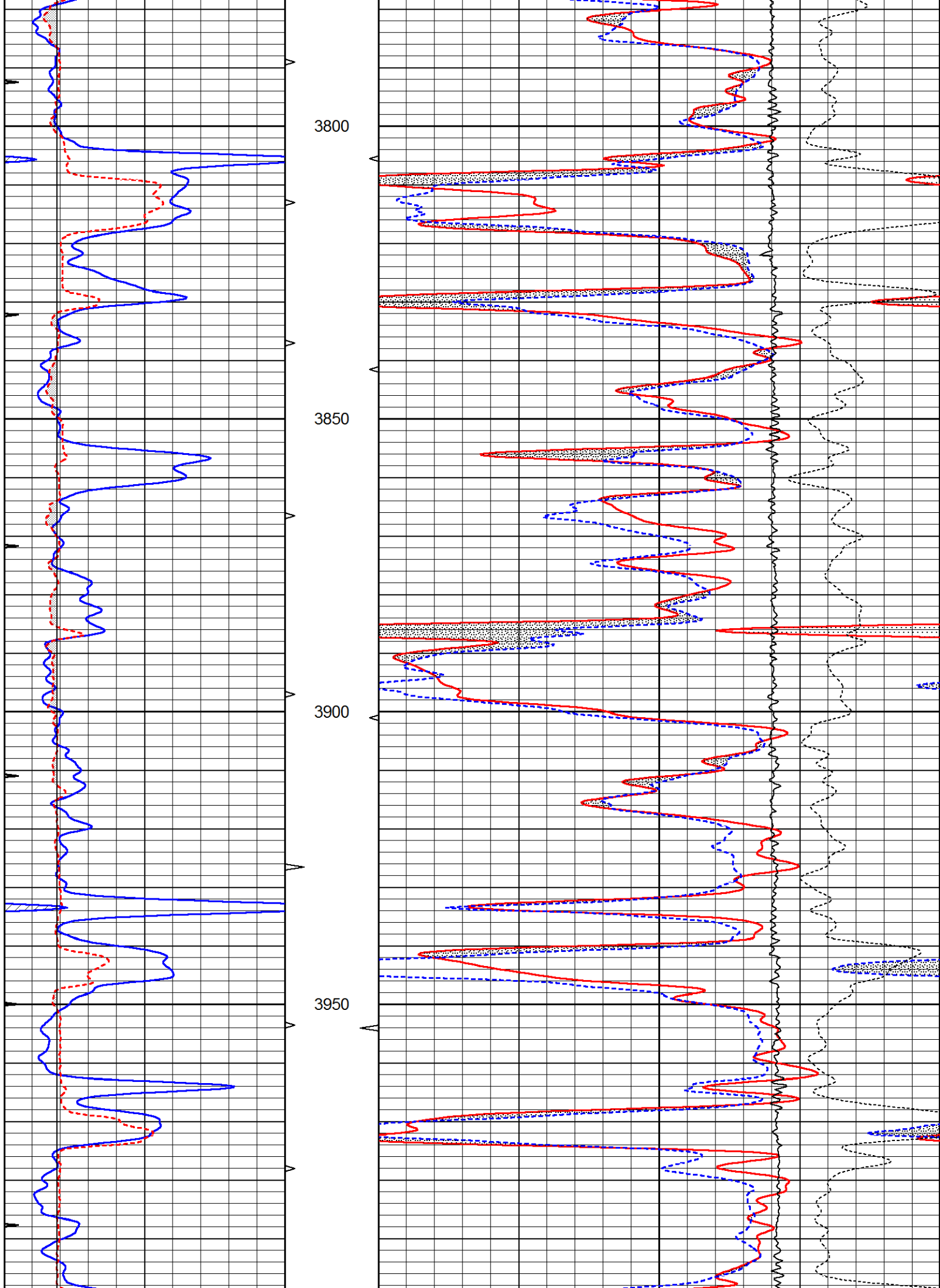


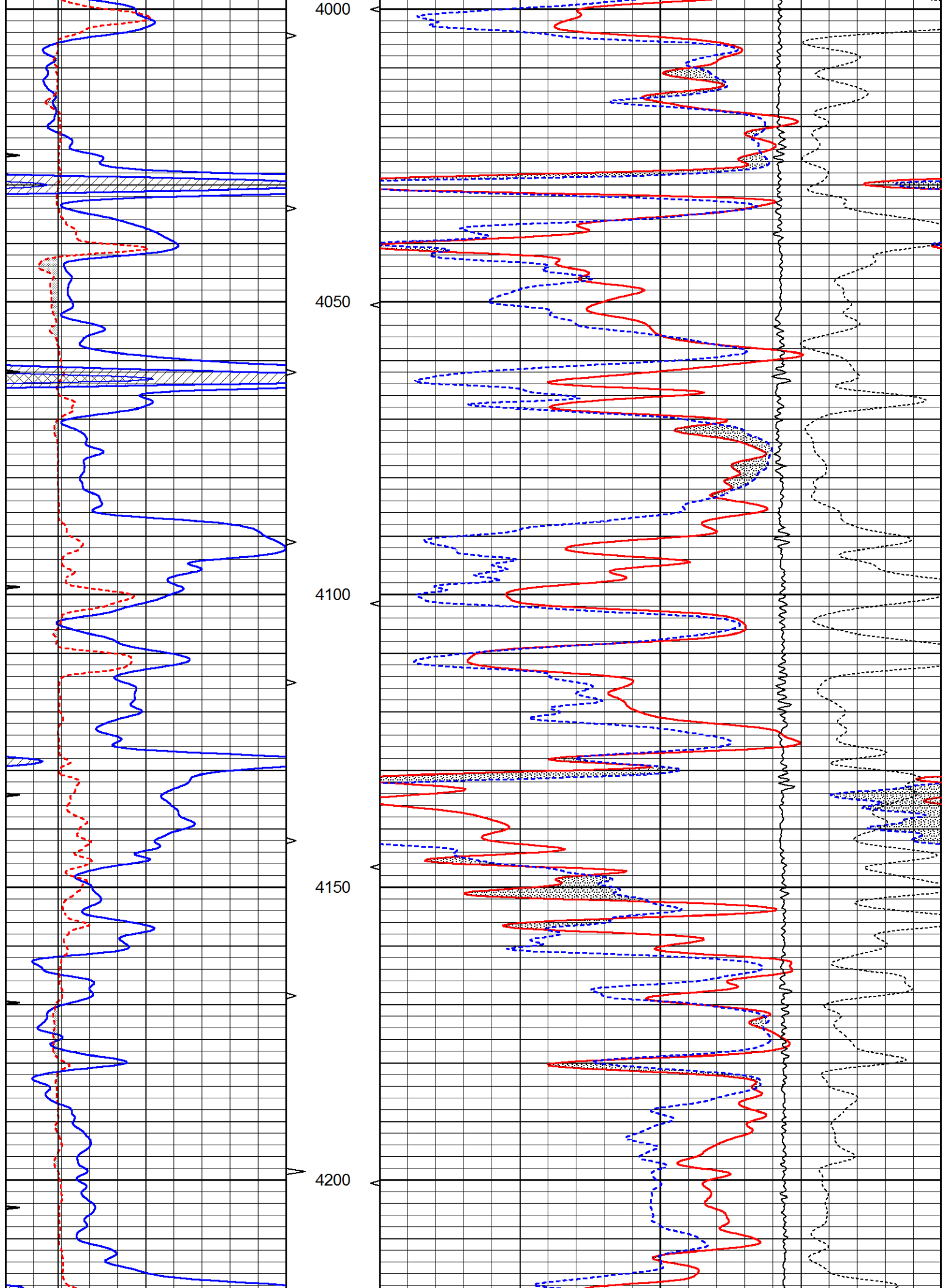
MAIN SECTION

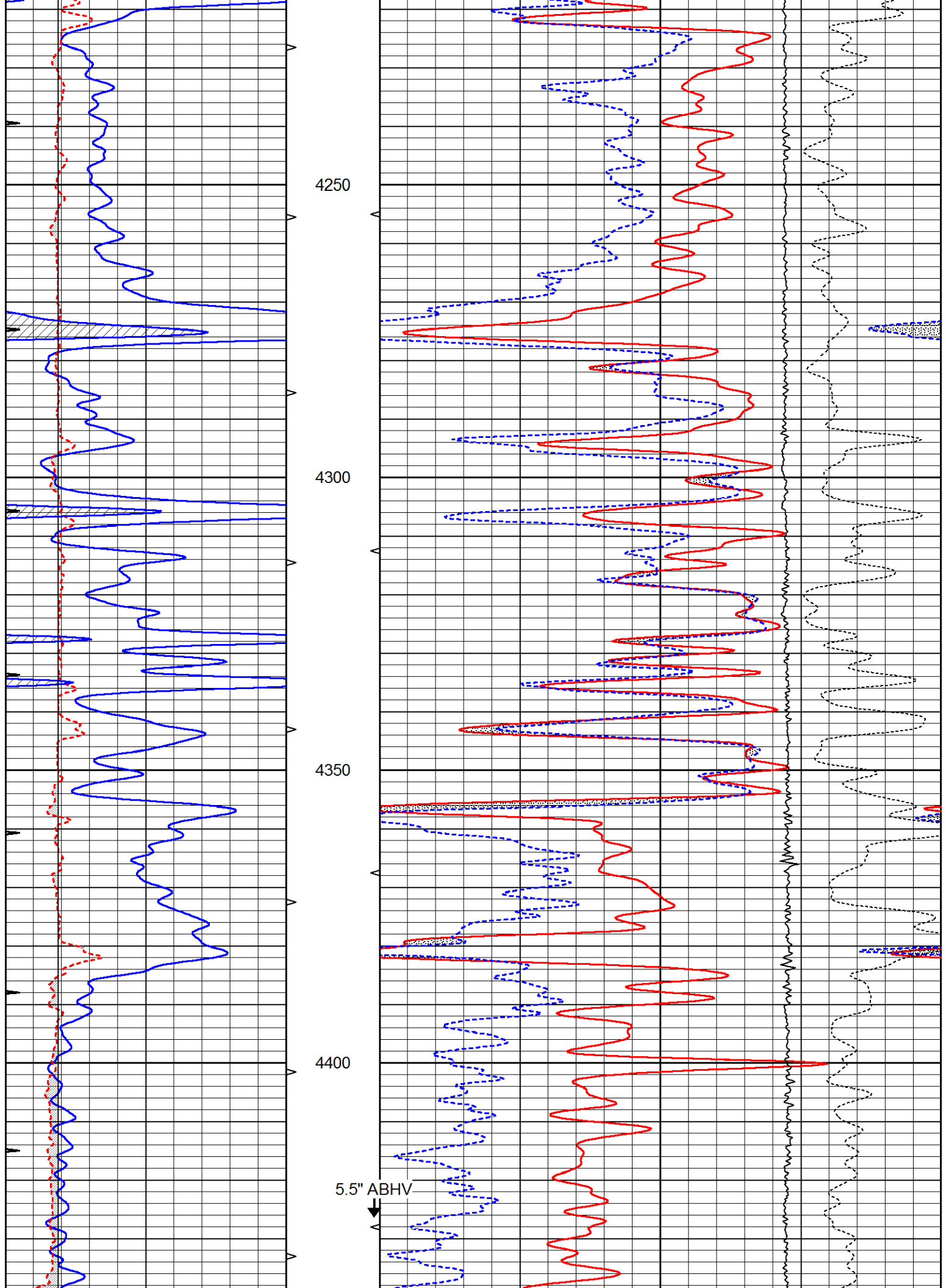
Database File 7439ddn.db
 Dataset Pathname pass3.1M
 Presentation Format den_neu
 Dataset Creation Mon Jan 16 06:26:14 2023
 Charted by Depth in Feet scaled 1:240

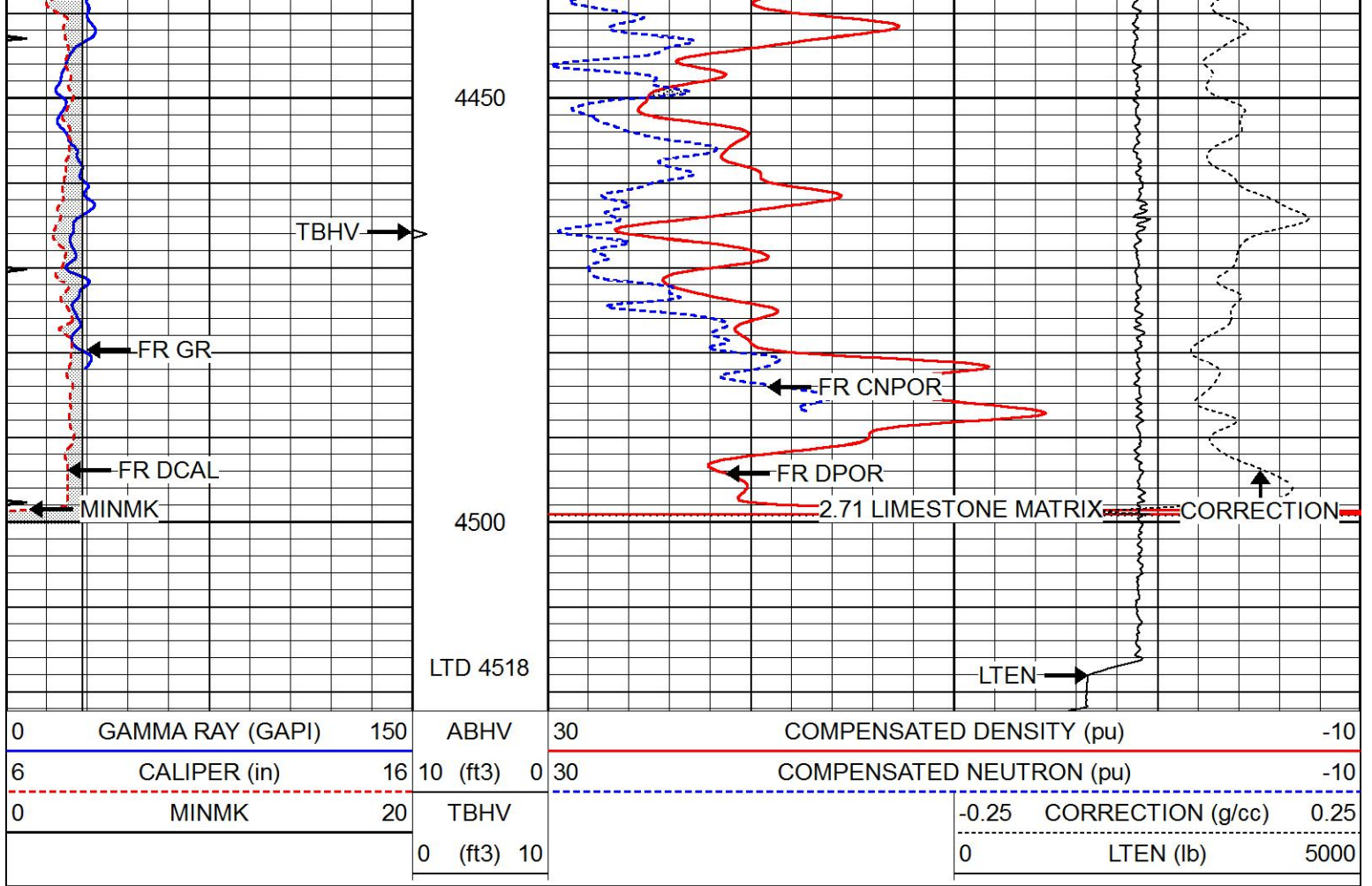
0	GAMMA RAY (GAPI)	150	ABHV	30	COMPENSATED DENSITY (pu)			-10	
6	CALIPER (in)	16	10 (ft3)	0	30	COMPENSATED NEUTRON (pu)			-10
0	MINMK	20	TBHV			-0.25	CORRECTION (g/cc)	0.25	
			0 (ft3)	10		0	LTEN (lb)	5000	







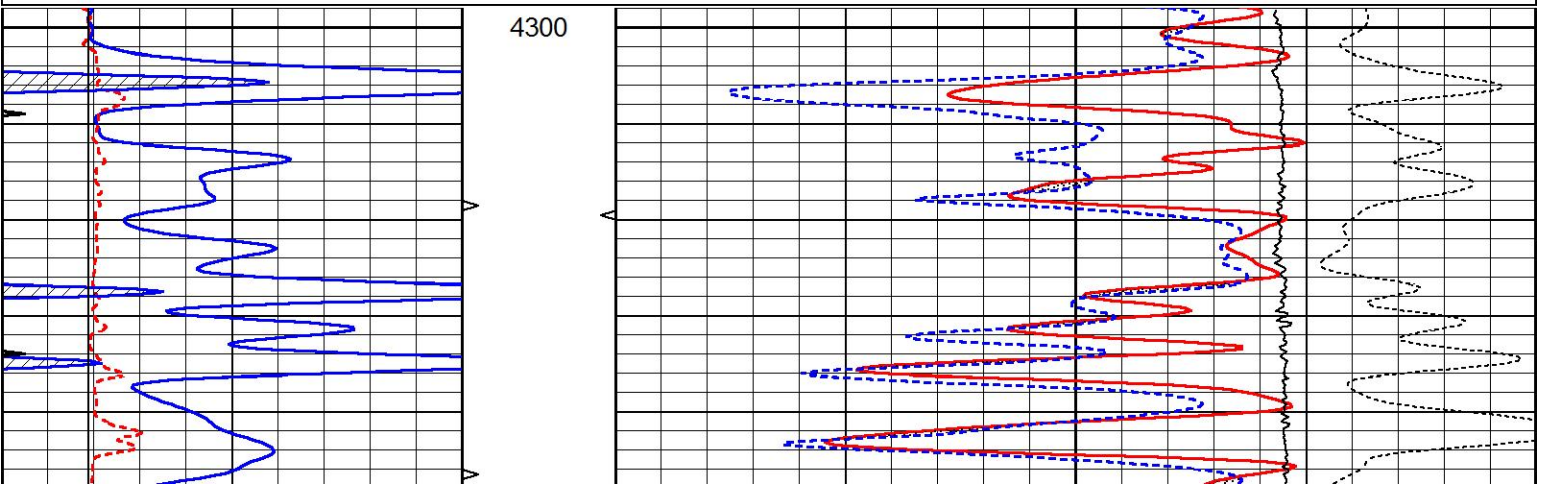


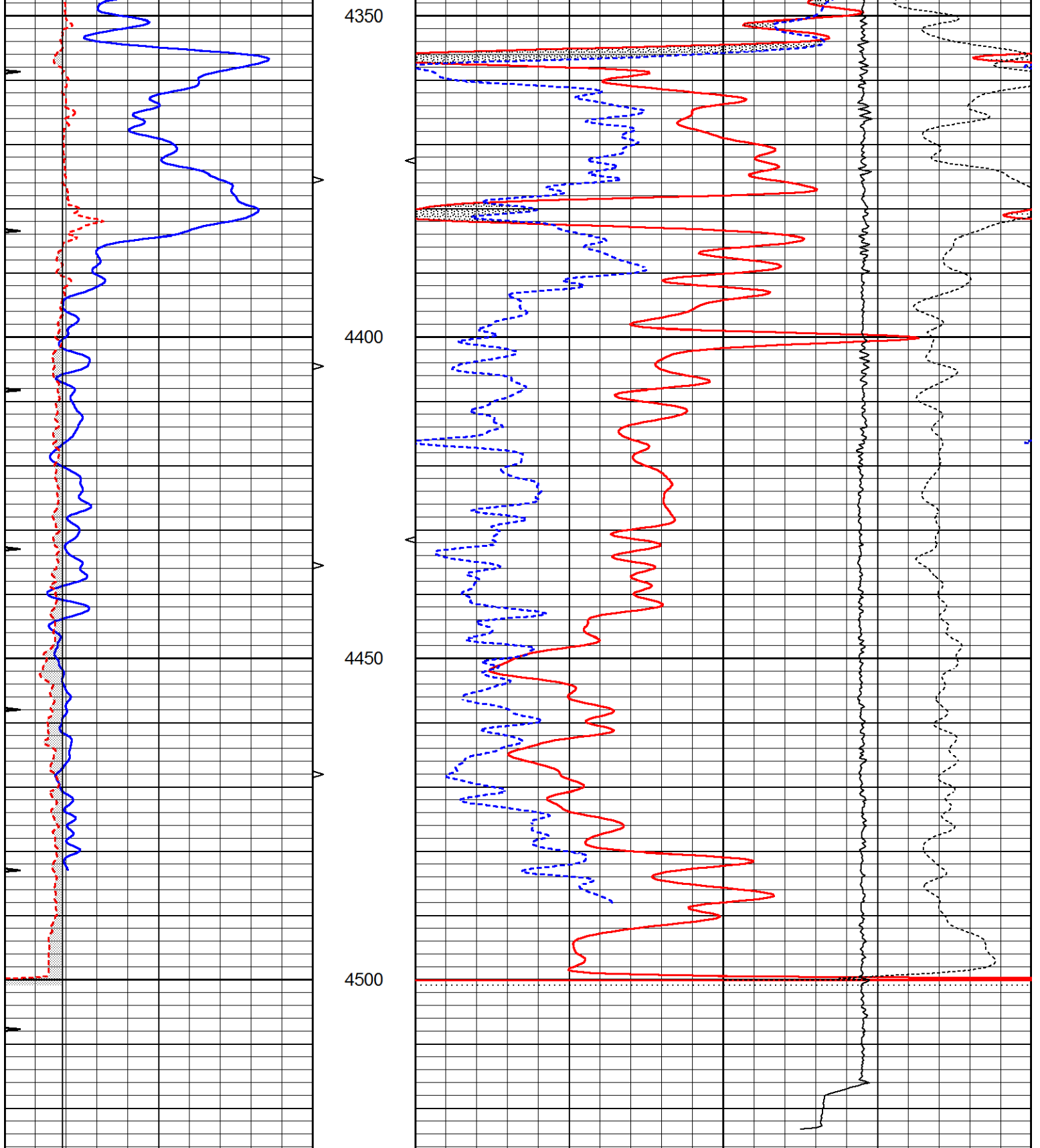


REPEAT SECTION

Database File 7439ddn.db
 Dataset Pathname pass2.1R
 Presentation Format den_neu
 Dataset Creation Mon Jan 16 05:33:56 2023
 Charted by Depth in Feet scaled 1:240

0	GAMMA RAY (GAPI)	150	ABHV	30	COMPENSATED DENSITY (pu)	-10	
6	CALIPER (in)	16	10 (ft3)	0 30	COMPENSATED NEUTRON (pu)	-10	
0	MINMK	20	TBHV		-0.25	CORRECTION (g/cc)	0.25
			0 (ft3)	10	0	LTEN (lb)	5000





0	GAMMA RAY (GAPI)	150	ABHV	30	COMPENSATED DENSITY (pu)	-10	
6	CALIPER (in)	16	10 (ft3)	0 30	COMPENSATED NEUTRON (pu)	-10	
0	MINMK	20	TBHV		-0.25 CORRECTION (g/cc)	0.25	
			0 (ft3)	10	0	LTEN (lb)	5000

Calibration Report

Database File 7439ddn.db
 Dataset Pathname pass3.1M
 Dataset Creation Mon Jan 16 06:26:14 2023

Dual Induction Calibration Report

Serial-Model:	PROBE8-DILG
Surface Cal Performed:	Mon Jan 16 05:41:53 2023
Downhole Cal Performed:	Mon Sep 10 14:28:38 2018
After Survey Verification Performed:	Mon Sep 10 14:28:40 2018

Surface Calibration

Readings				References			Results	
Loop:	Air	Loop		Air	Loop		m	b
Deep	0.015	0.648	V	0.000	400.000	mmho/m	620.000	-2.000
Medium	0.029	0.796	V	0.000	464.000	mmho/m	620.000	-10.000
Internal:	Zero	Cal		Zero	Cal		m	b
Deep	0.017	0.657	V	0.000	400.000	mmho/m	625.153	-10.619
Medium	0.016	0.757	V	0.000	464.000	mmho/m	625.992	-9.739

Downhole Calibration

Readings				References			Results	
	Zero	Cal		Zero	Cal		m'	b'
Deep	0.000	0.000	mmho/m	2.011	405.777	mmho/m	1.000	0.000
Medium	0.000	0.000	mmho/m	7.590	503.393	mmho/m	1.000	0.000
LL3		7.500	V		1500.000	Ohm-m		
		0.000	V		20.000	Ohm-m		
		-7.200	V		3800.000	mmho-m		

After Survey Verification

Readings				Targets			Results	
	Zero	Cal		Zero	Cal		m'	b'
Deep	0.000	0.000	mmho/m	0.000	0.000	mmho/m	0.000	0.000
Medium	0.000	0.000	mmho/m	0.000	0.000	mmho/m	0.000	0.000
LL3		1.000	Ohm-m		1.000	Ohm-m		
		0.000	Ohm-m		0.000	Ohm-m		
		1.000	mmho-m		1.000	mmho-m		

Litho Density Calibration Report
Serial: 004 Model: PRB

Master Calibration

Performed Fri Nov 04 15:19:59 2022

	Background	Magnesium	Aluminum	Aluminum+Fe	
Window 1	1153.2	7232.1	2536.8	2279.5	cps
Window 2	1055.6	6225.5	2222.3	2030.5	cps
Window 3	902.5	3849.3	1546.4	1462.0	cps
Window 4	254.4	258.2	253.1	253.9	cps
Long Space	0.0	5169.9	1166.7	974.9	cps
Short Space	4.7	1383.0	950.5	792.1	cps
Rho		1.7100	2.5900	0.0000	g/cc
Pe		2.0000	2.7500	5.7900	
Rib Angle	: 45.9	Rib Slope	: 1.031	Density/Spine Ratio	: 0.573
Spine Angle	: 75.9	Spine Slope	: 3.970	Spine Intercept	: -20.2

Before Survey Verification

Performed Wed Dec 31 18:00:00 1969

Window 1	0.0	0.0	0.0	0.0	cps
Window 2	0.0	0.0	0.0	0.0	cps

Window 3	0.0	0.0	0.0	0.0	cps
Window 4	0.0	0.0	0.0	0.0	cps
Long Space	0.0	0.0	0.0	0.0	cps
Short Space	0.0	0.0	0.0	0.0	cps
Measured Rho		0.0000	0.0000	0.0000	g/cc
Measured Correction		0.0000	0.0000	0.0000	g/cc
Measured Pe			0.0000	0.0000	

After Survey Verification			Performed Wed Dec 31 18:00:00 1969		
Window 1	0.0	0.0	0.0	0.0	cps
Window 2	0.0	0.0	0.0	0.0	cps
Window 3	0.0	0.0	0.0	0.0	cps
Window 4	0.0	0.0	0.0	0.0	cps
Long Space	0.0	0.0	0.0	0.0	cps
Short Space	0.0	0.0	0.0	0.0	cps
Measured Rho		0.0000	0.0000	0.0000	g/cc
Measured Correction		0.0000	0.0000	0.0000	g/cc
Measured Pe			0.0000	0.0000	

Compensated Neutron Calibration Report

Serial Number:	6I
Tool Model:	G

CALIBRATION						
	Detector	Readings		Target		Normalization
	Short Space	1.00	cps	1.00	cps	1.0000
	Long Space	1.00	cps	1.00	cps	1.0000

PRE-SURVEY VERIFICATION						
	Detector	Readings		Measured		Target
1)	Short Space		cps			
	Long Space		cps		pu	pu
2)	Short Space		cps			
	Long Space		cps		pu	
3)	Short Space		cps			
	Long Space		cps		pu	

POST-SURVEY VERIFICATION						
	Detector	Readings		Measured		Target
1)	Short Space		cps			
	Long Space		cps		pu	pu
2)	Short Space		cps			
	Long Space		cps		pu	pu
3)	Short Space		cps			
	Long Space		cps		pu	pu

Gamma Ray Calibration Report

Serial Number:	GR6
Tool Model:	OPEN
Performed:	Thu Jan 12 05:07:40 2023

Calibrator Value:	150.0	GAPI
Background Reading:	0.0	cps
Calibrator Reading:	276.0	cps
Sensitivity:	0.8500	GAPI/cps