



SONIC LOG

Company KNIGHTON OIL COMPANY, INC.
 Well SELLS-BORNEMAN #A-1
 Field UNNAMED
 County TREGO State KANSAS

Location: API #: 15-195-23142-0000
 1495' FNL & 2175' FWL
 NW-NE-SE-NW
 SEC 29 TWP 15S RGE 23W
 Permanent Datum GROUND LEVEL Elevation 2438
 Log Measured From KELLY BUSHING 8' A.G.L
 Drilling Measured From KELLY BUSHING
 Other Services CDL/CNL/PE DIL/MEL
 Elevation K.B. 2446 D.F. 2444 G.L. 2438

Date	7/9/22
Run Number	TWO
Depth Driller	4485
Depth Logger	4487
Bottom Logged Interval	4479
Top Log Interval	200
Casing Driller	8 5/8" @ 232
Casing Logger	232
Bit Size	7 7/8
Type Fluid in Hole	CHEMICAL MUD
Density / Viscosity	8.9/61
PH / Fluid Loss	10.5/8.0
Source of Sample	FLOWLINE
Rm @ Meas. Temp	1.20 @ 80F
Rmt @ Meas. Temp	.900 @ 80F
Rmc @ Meas. Temp	1.44 @ 80F
Source of Rmf / Rmc	MEASUREMENT
Rm @ BHT	.900 @ 120F
Time Circulation Stopped	4 HOURS
Time Logger on Bottom	1:00 P.M.
Maximum Recorded Temperature	120F
Equipment Number	3802
Location	HAYS, KANSAS
Recorded By	COLE ROBBEN
Witnessed By	CHRIS TOY

<<< Fold Here >>>

All interpretations are opinions based on inferences from electrical or other measurements and we cannot and do not guarantee the accuracy or correctness of any interpretation, and we shall not, except in the case of gross or willful negligence on our part, be liable or responsible for any loss, costs, damages, or expenses incurred or sustained by anyone resulting from any interpretation made by any of our officers, agents or employees. These interpretations are also subject to our general terms and conditions set out in our current Price Schedule.

Comments

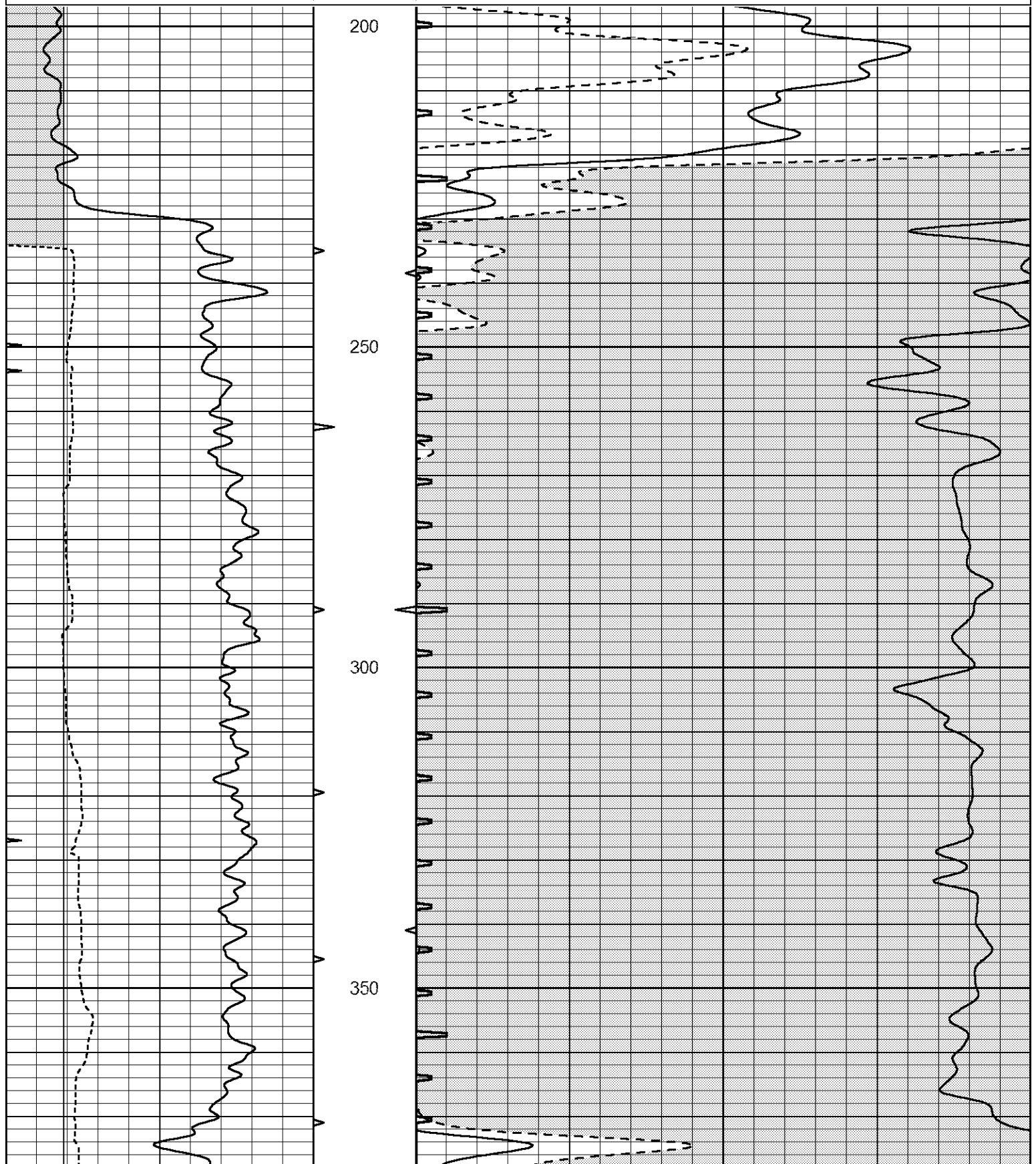
THANK YOU FOR USING ELI WIRELINE SERVICES, HAYS, KS. (785) 628-6395
 DIRECTIONS
 FROM WAKEENEY, KANSAS GO 19 MILES SOUTH ON HIGHWAY 283 TO ROAD CC,
 THEN 3/4 MILE WEST, 1/8 MILE SOUTH AND EAST INTO

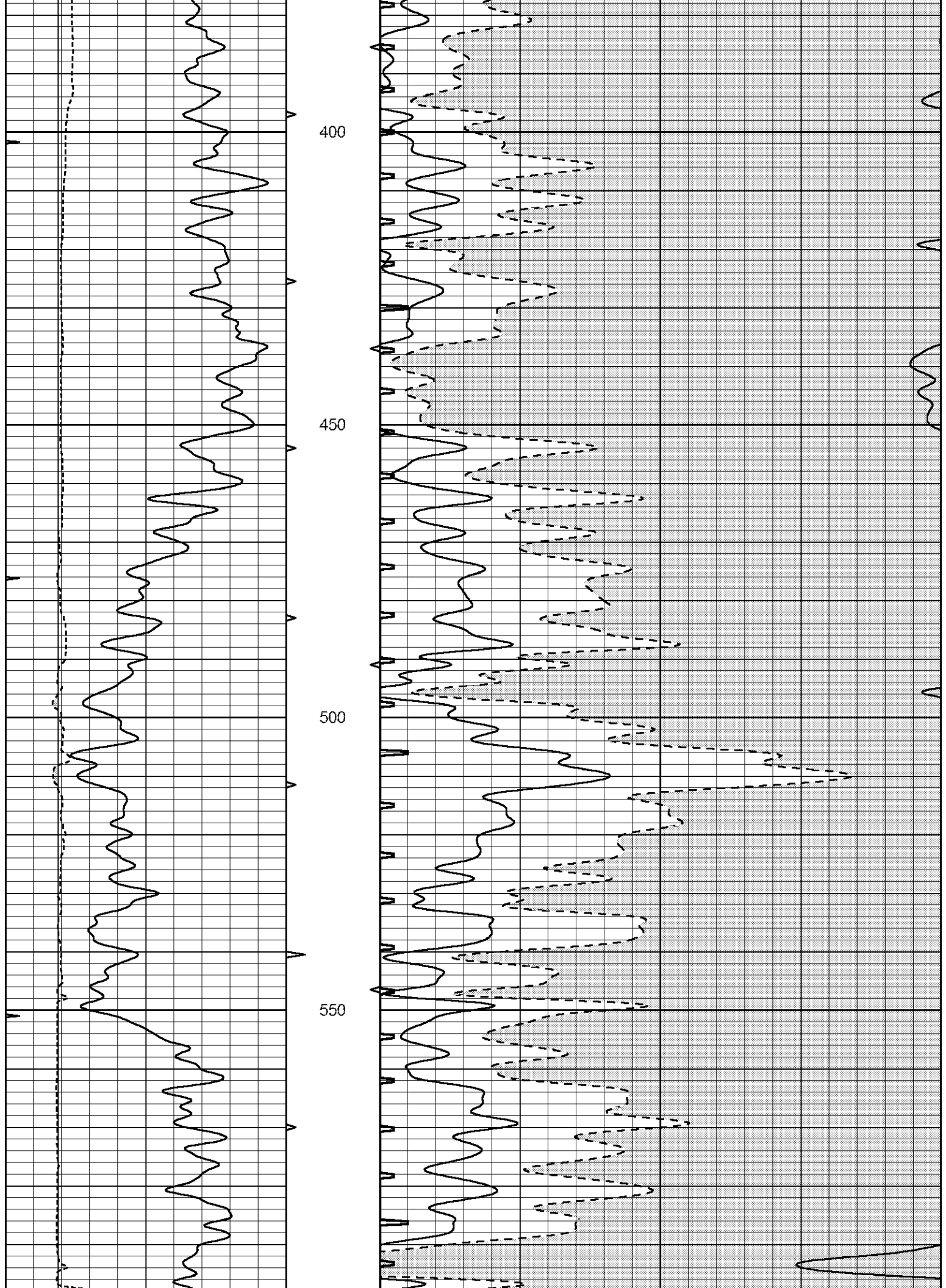


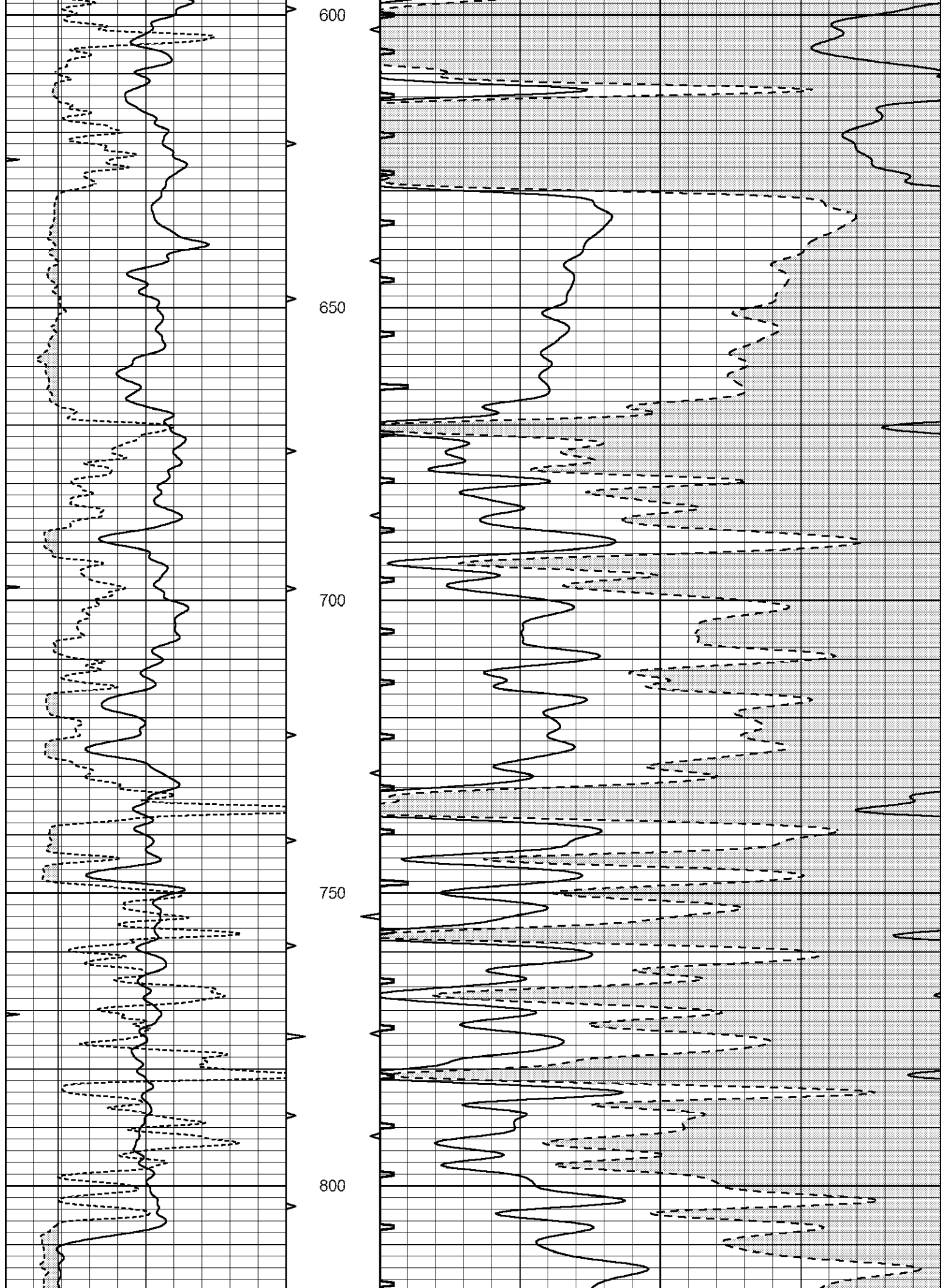
MAIN SECTION

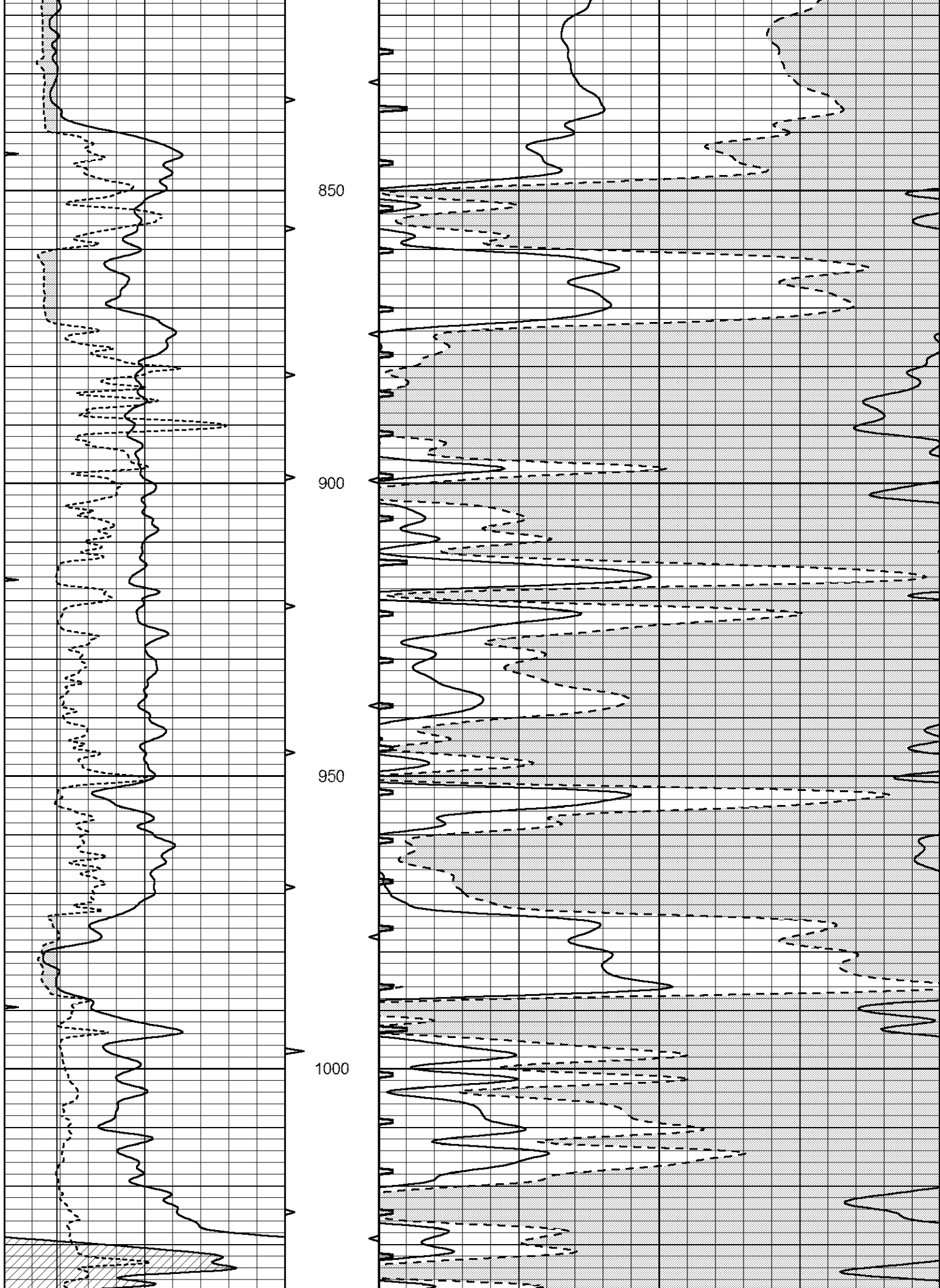
Database File 6754pe.db
 Dataset Pathname pass7M
 Presentation Format _slt
 Dataset Creation Sat Jul 09 14:43:26 2022
 Charted by Depth in Feet scaled 1:240

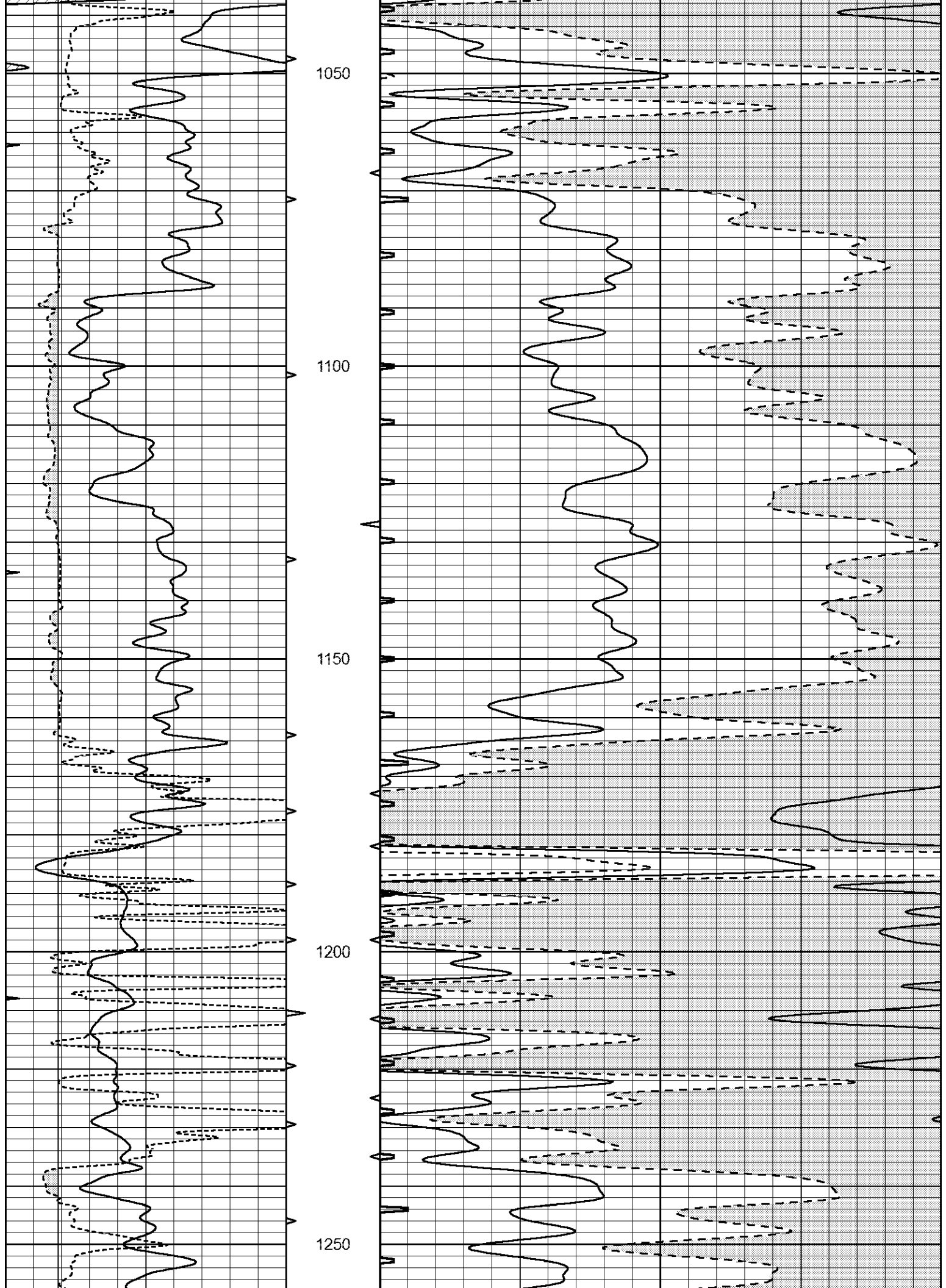
0	GAMMA RAY (GAPI)	150	ABHV	140	DELTA TIME (usec/ft)	40	
6	CALIPER (in)	16	10 (ft3)	0	30	SONIC POROSITY (pu)	-10
0	MINMK	20	TBHV	0	ITT (msec)	20	
			0 (ft3)	10			

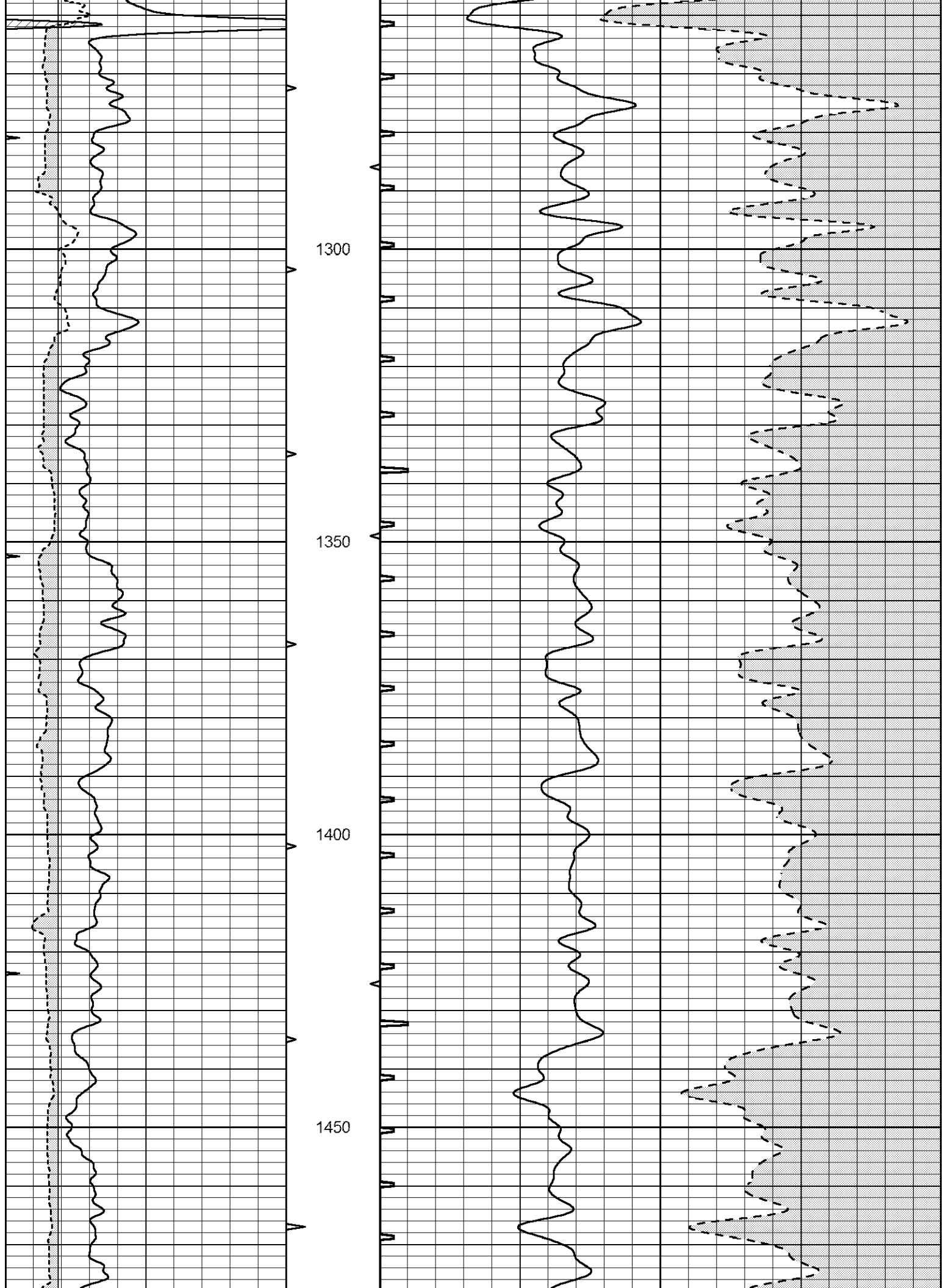


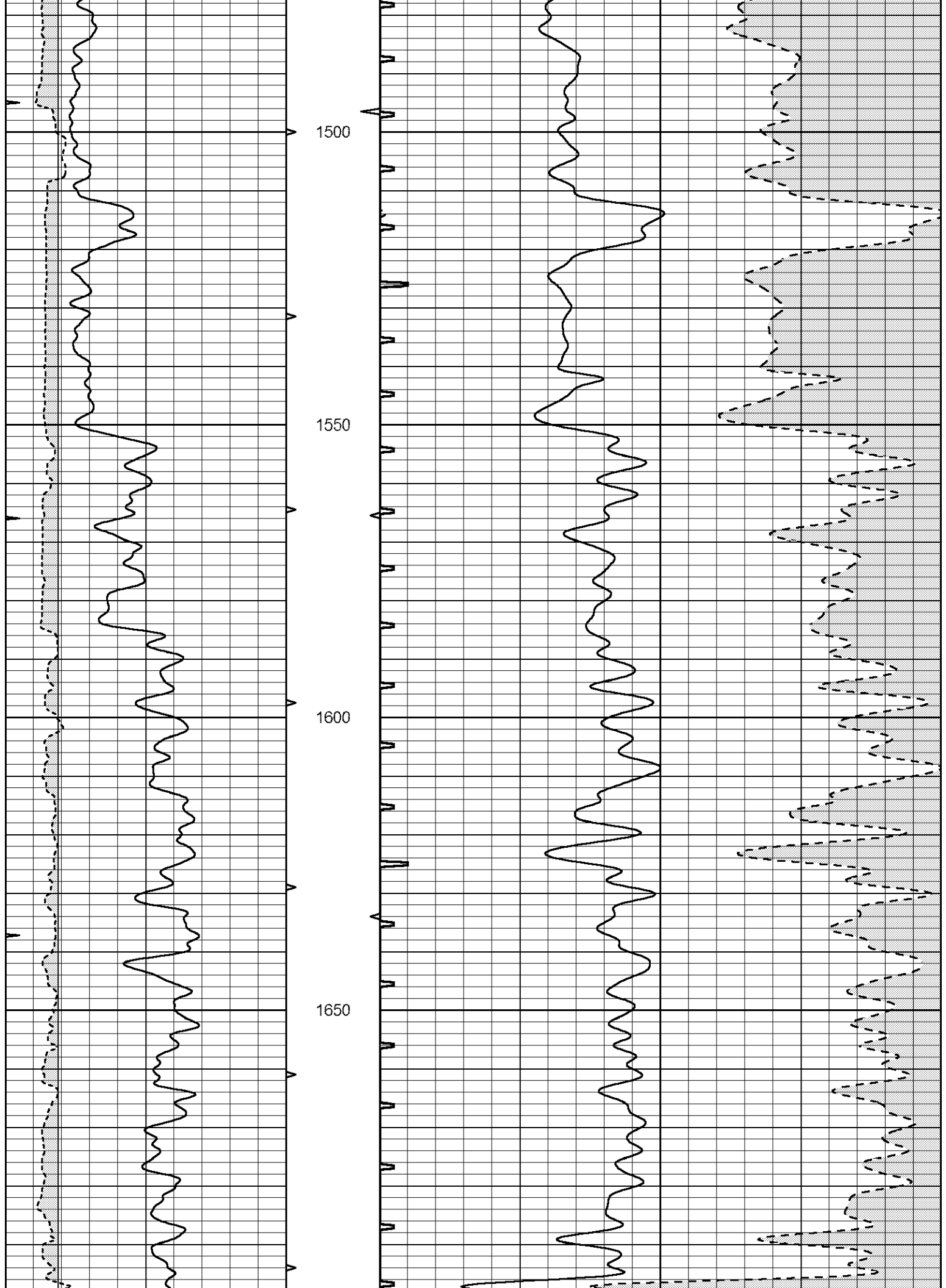


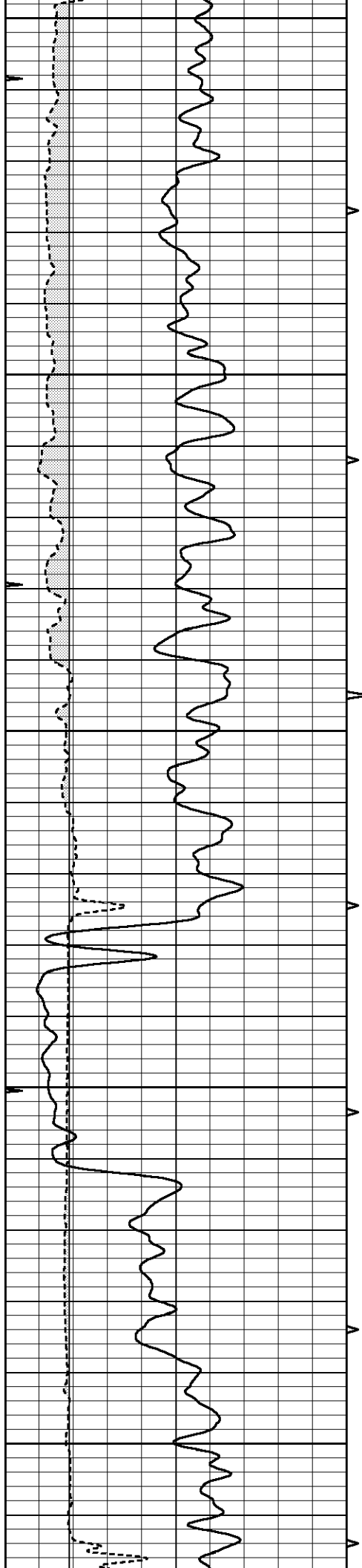












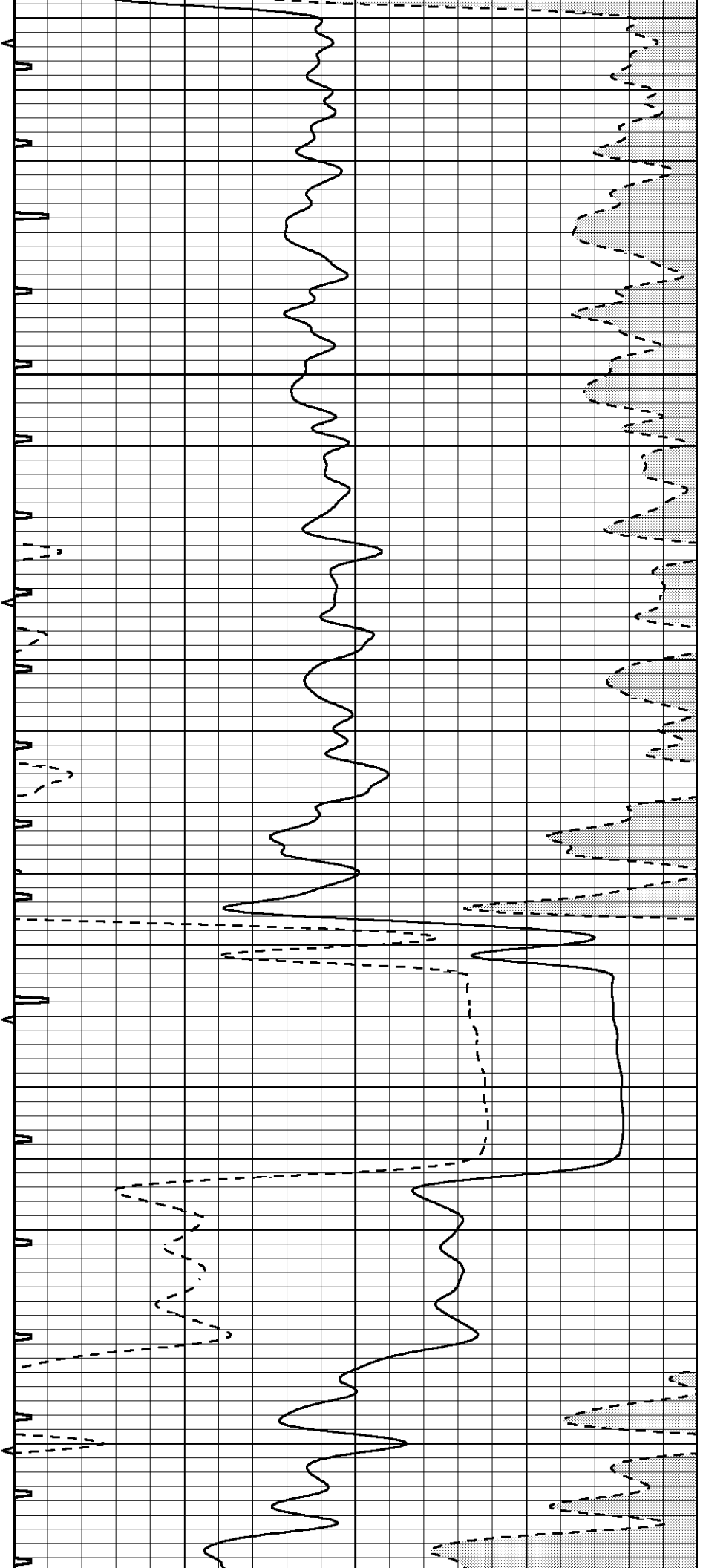
1700

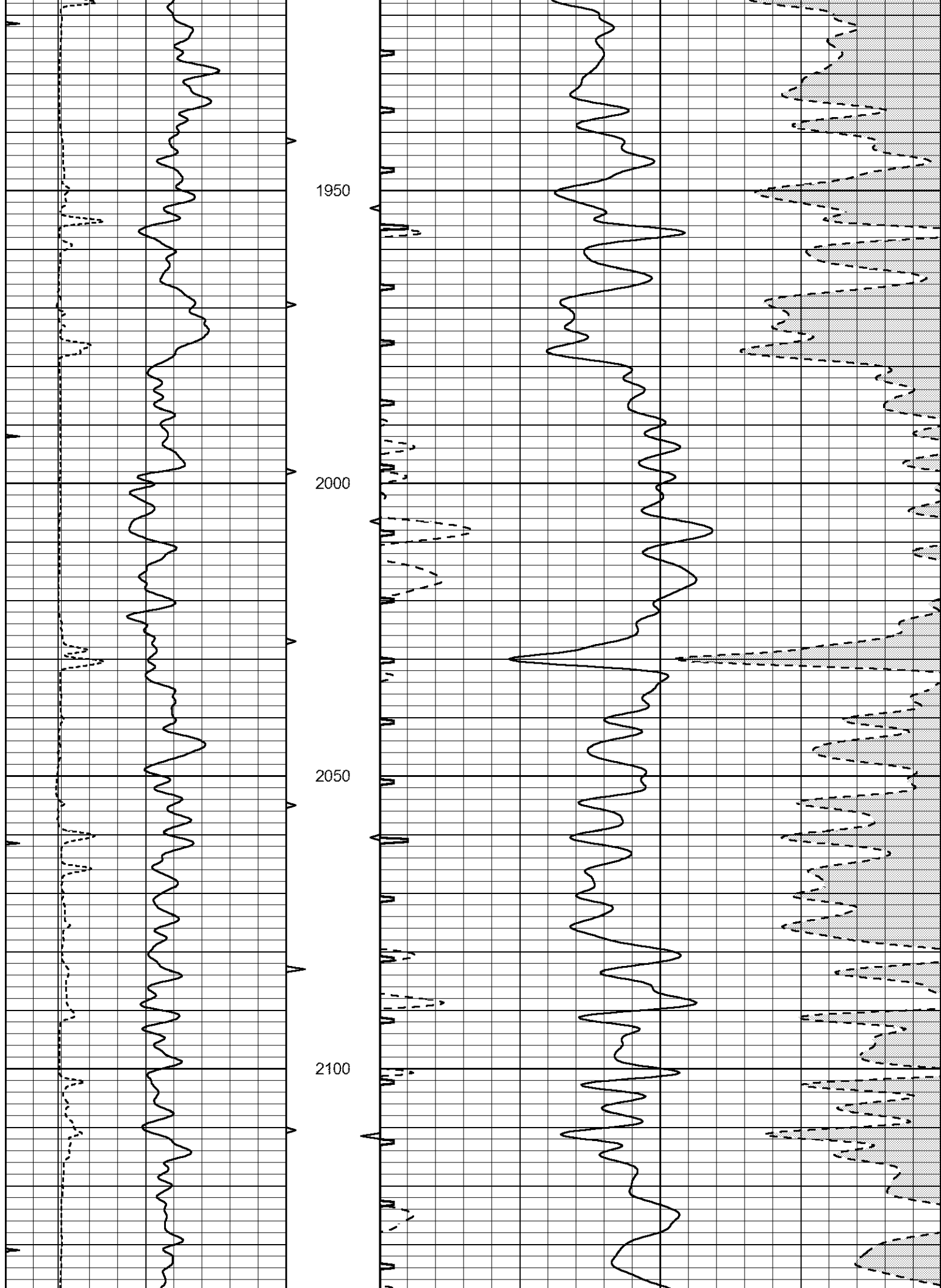
1750

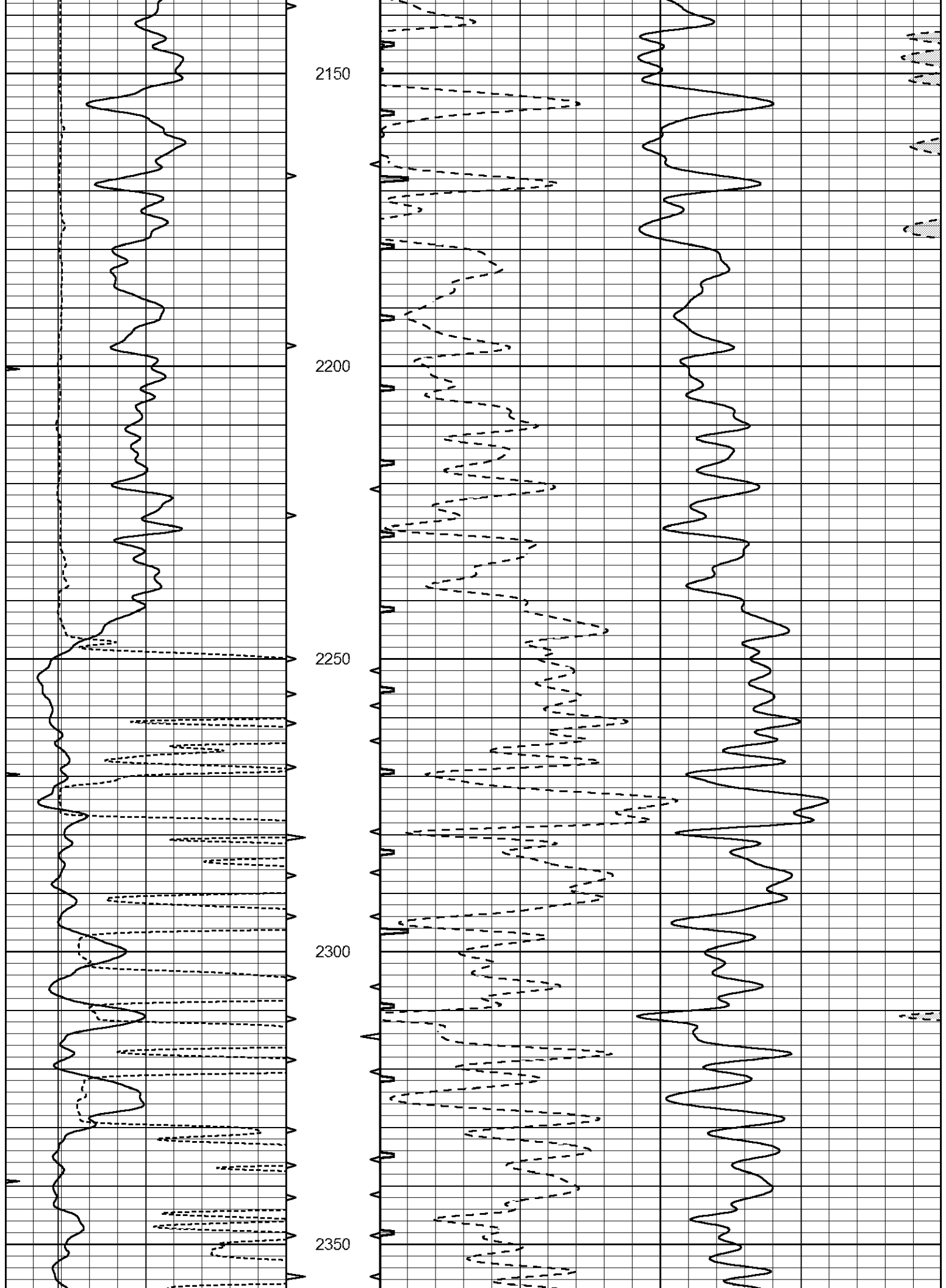
1800

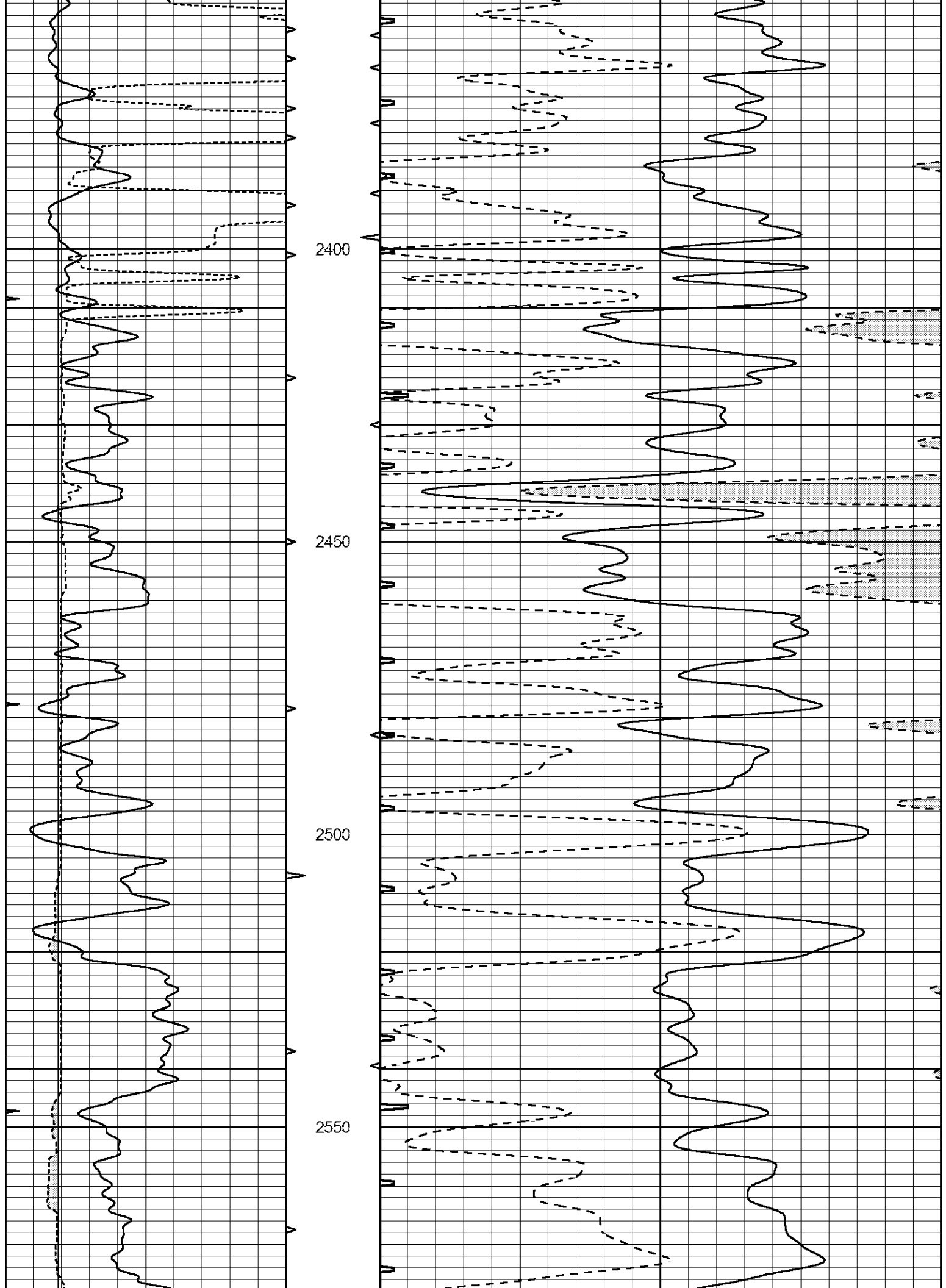
1850

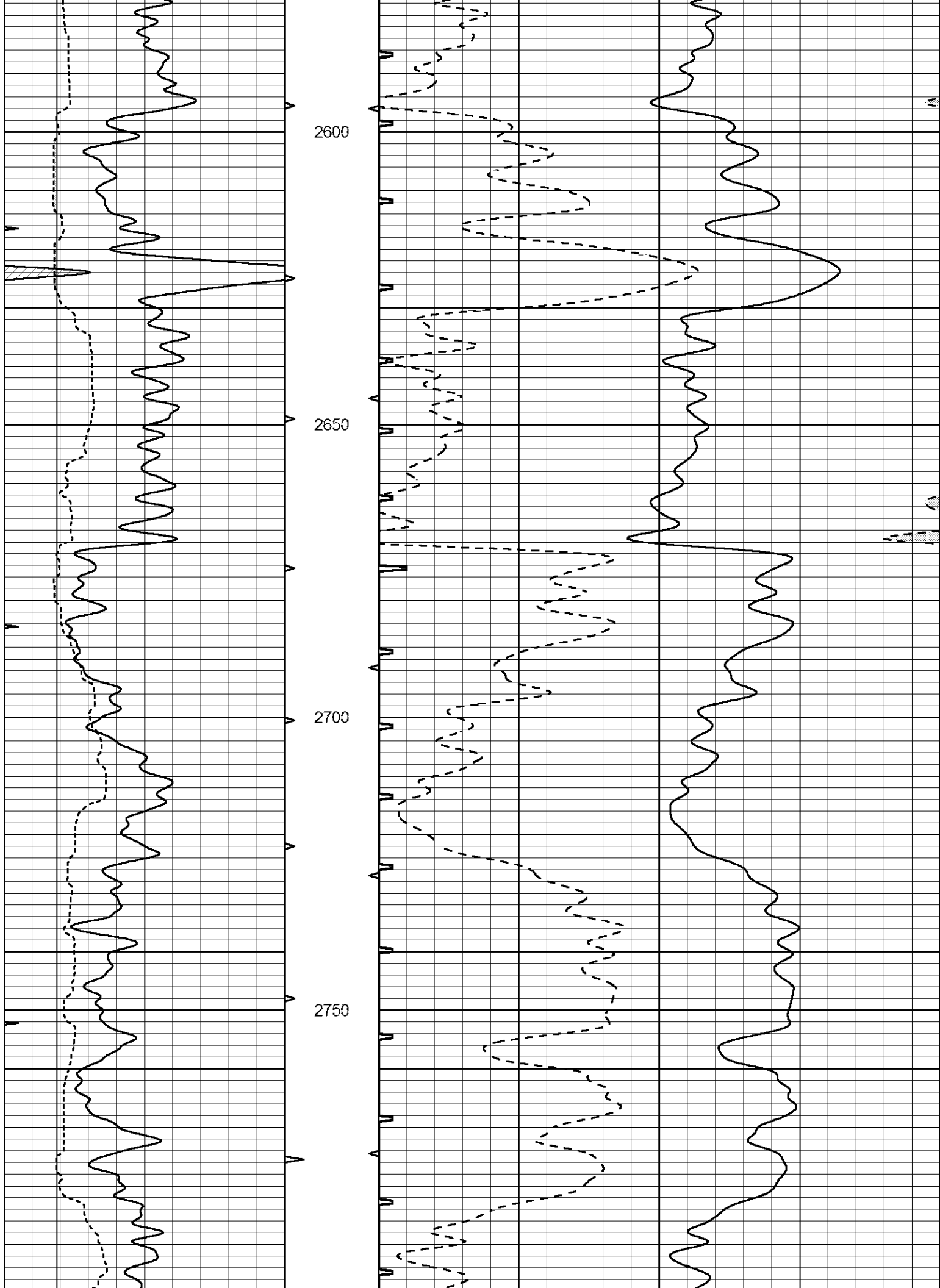
1900

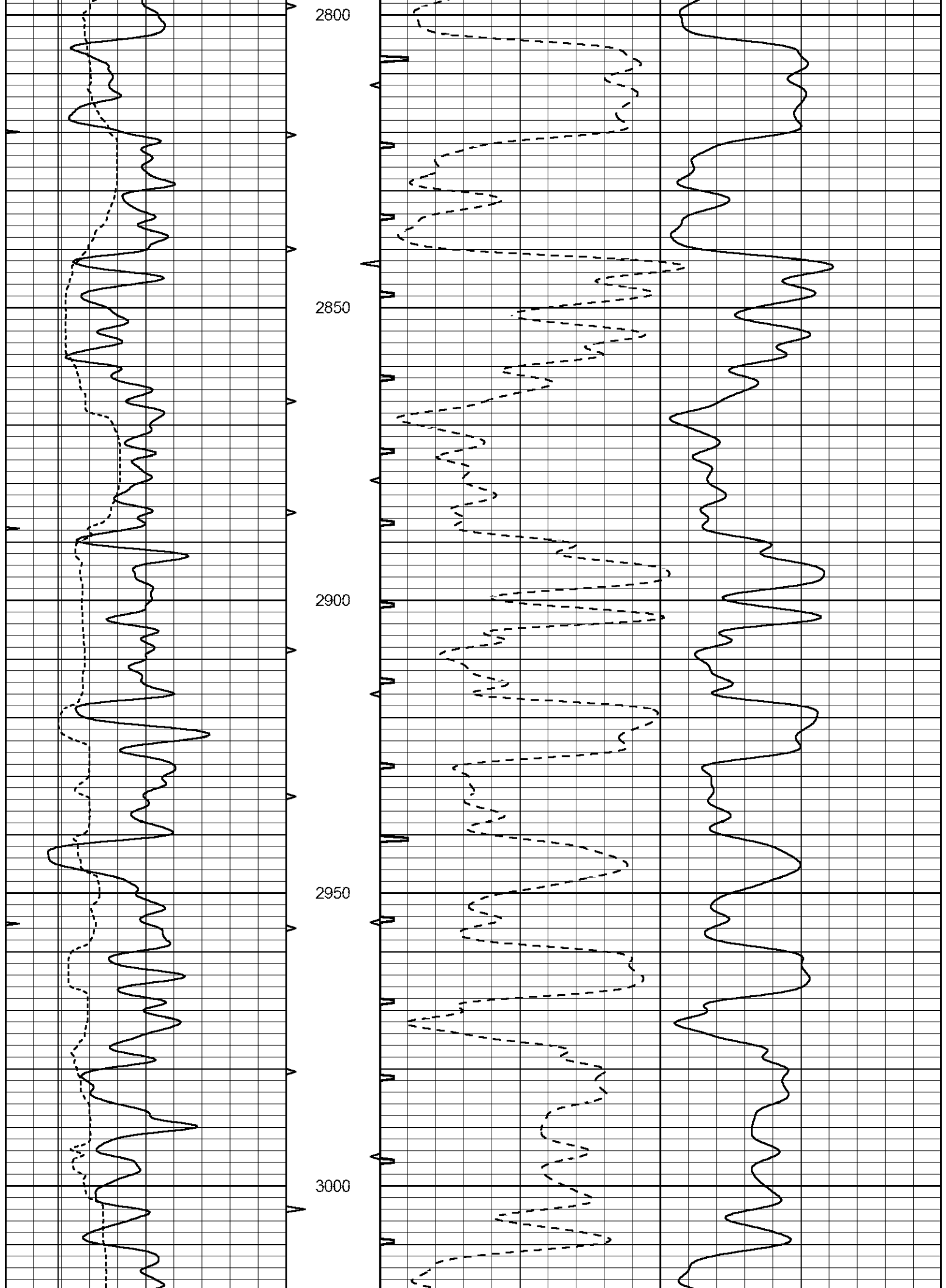


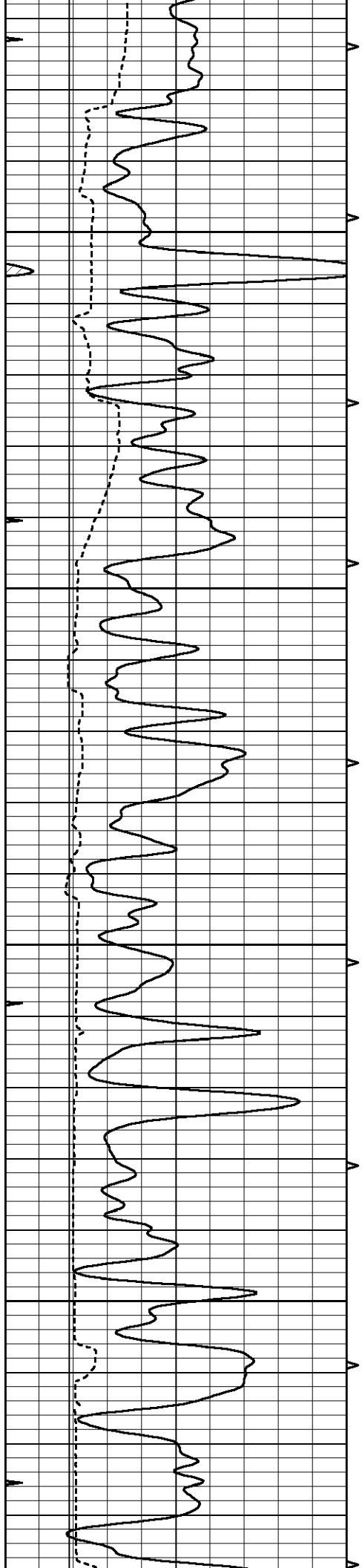










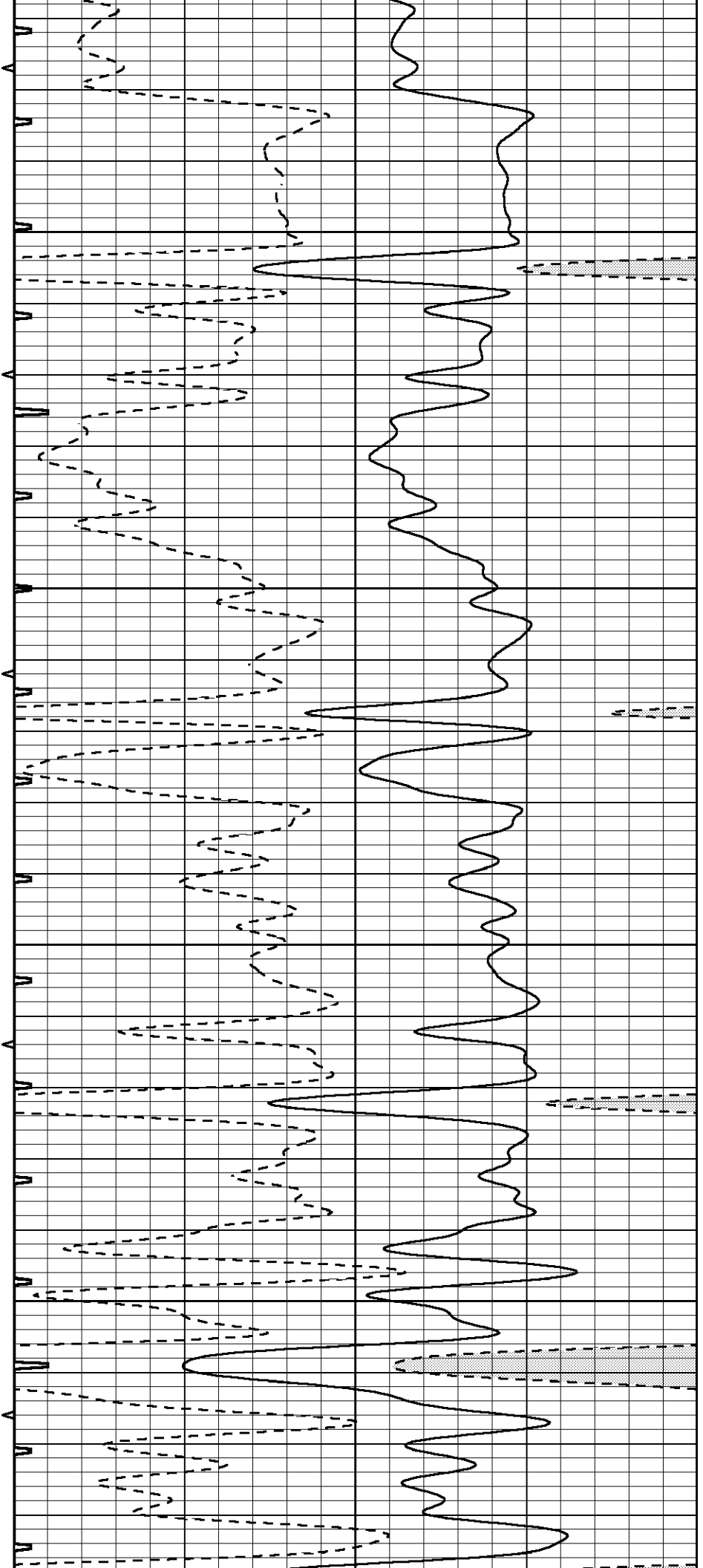


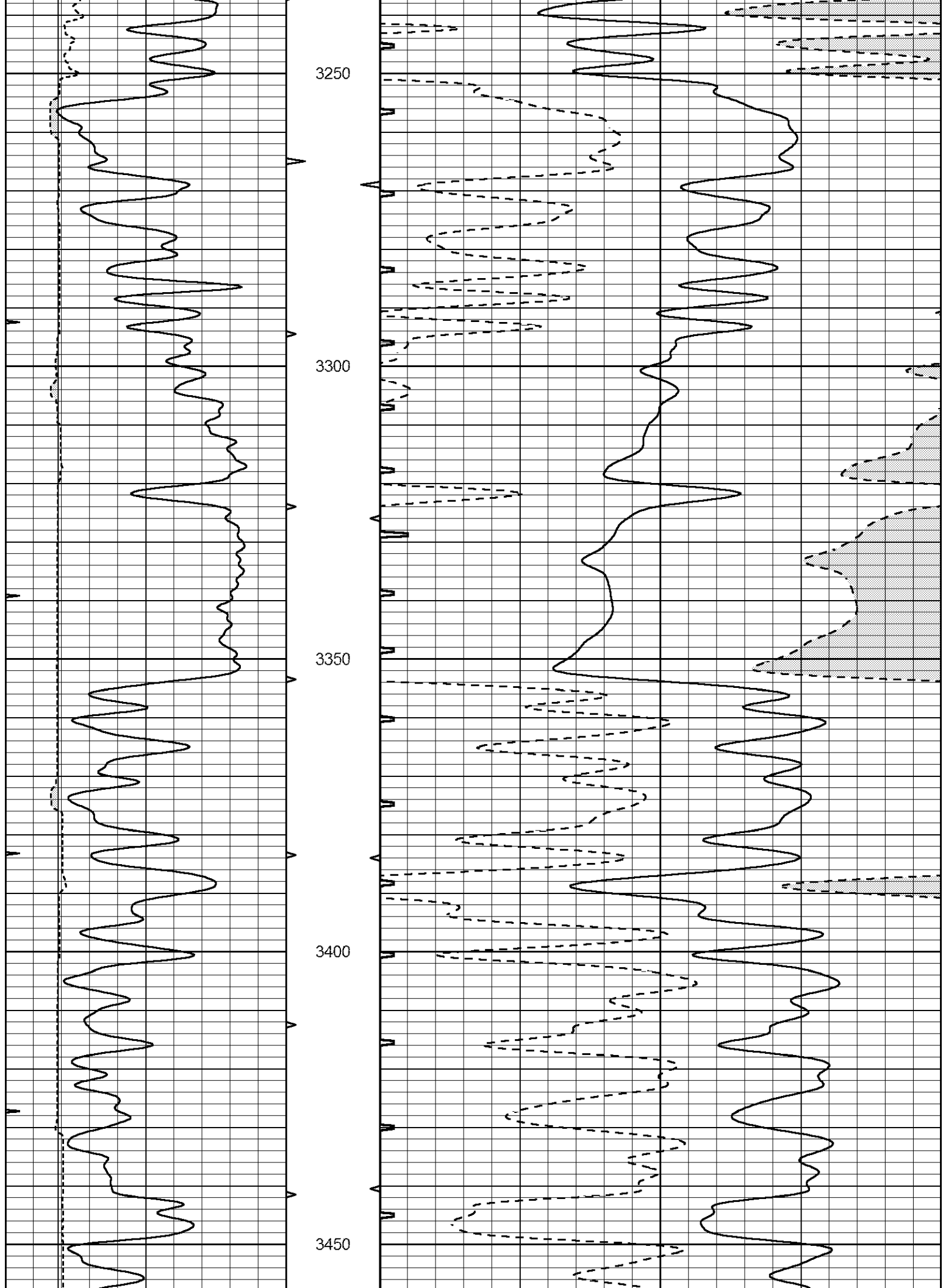
3050

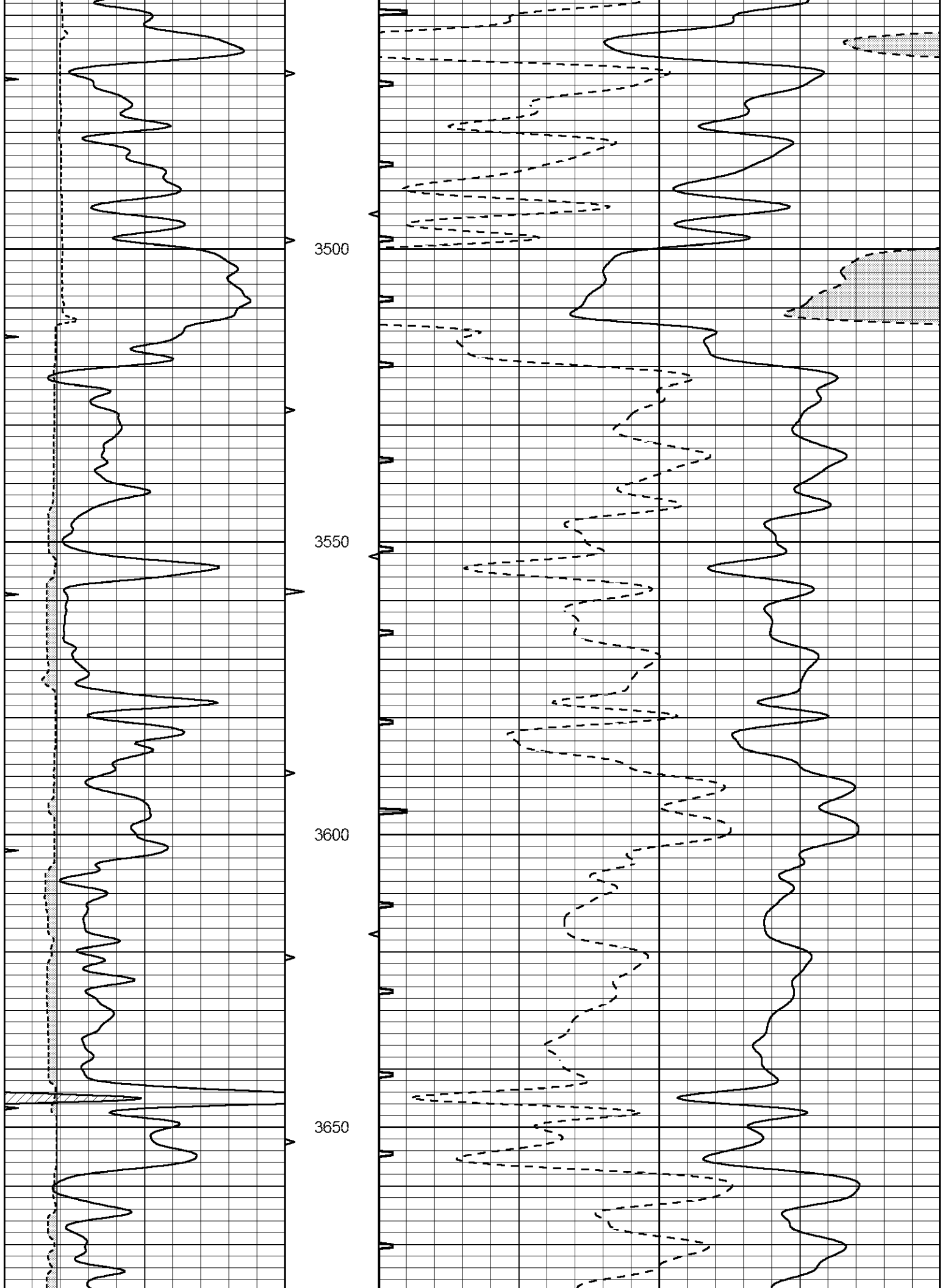
3100

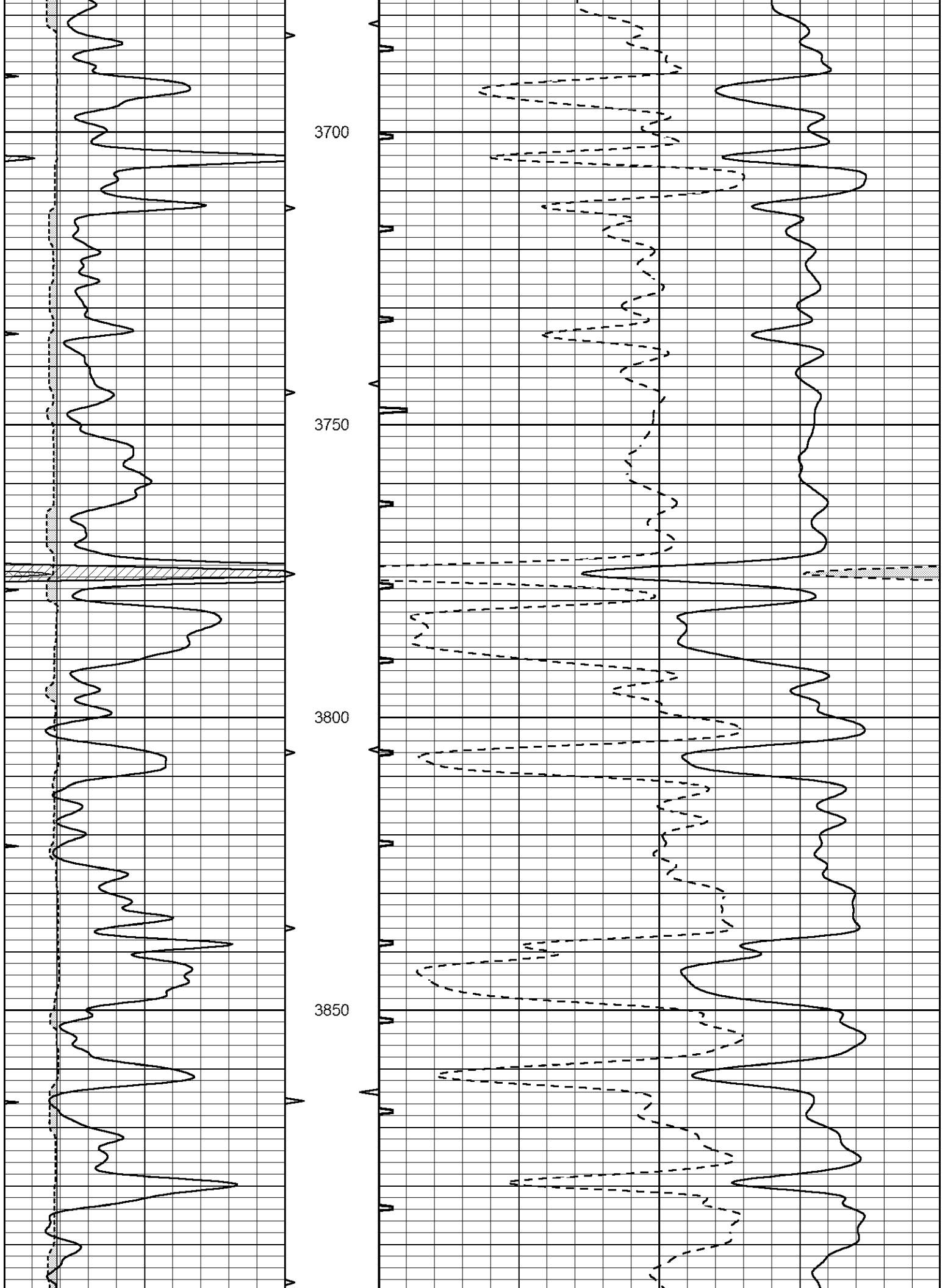
3150

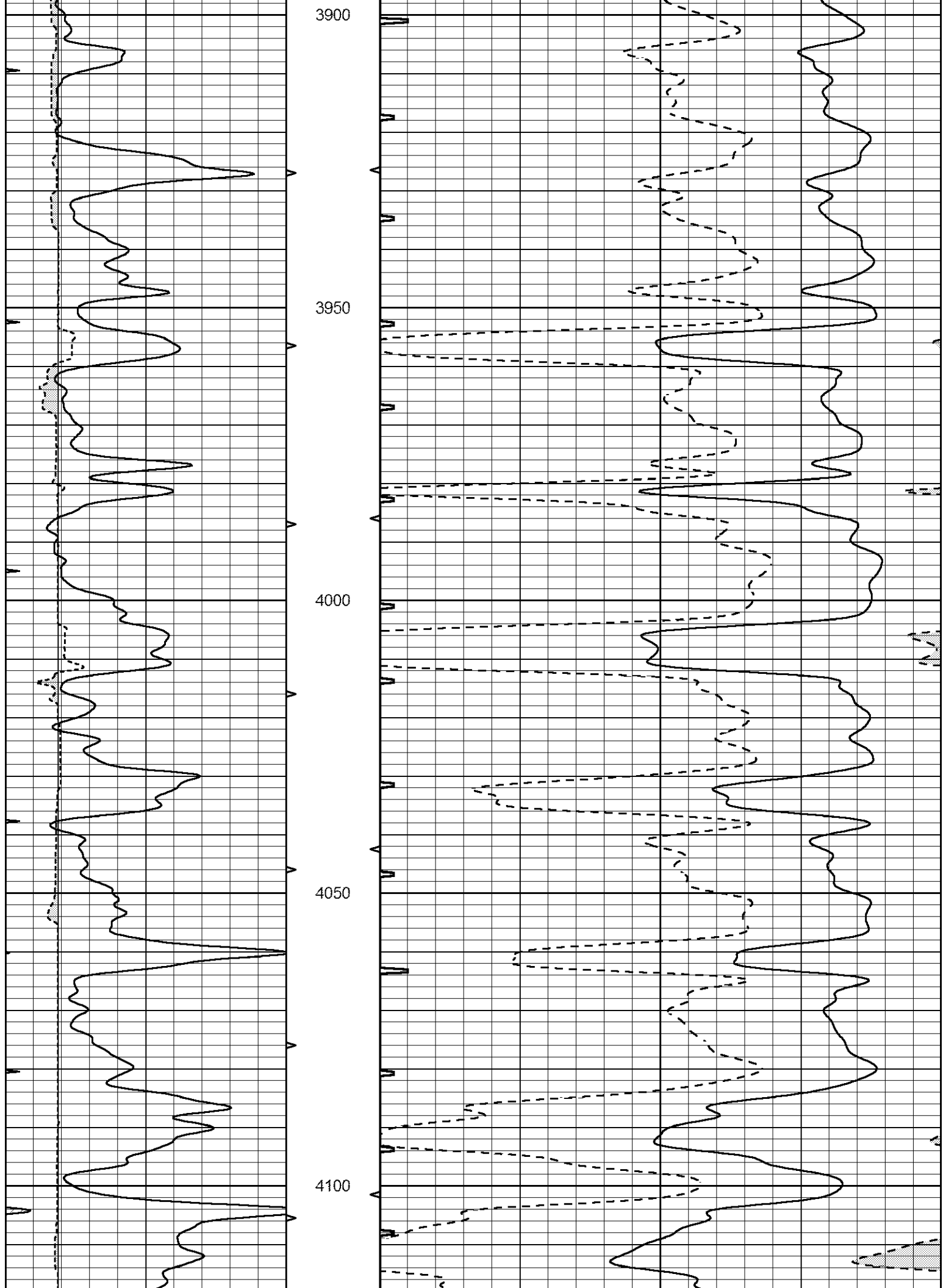
3200

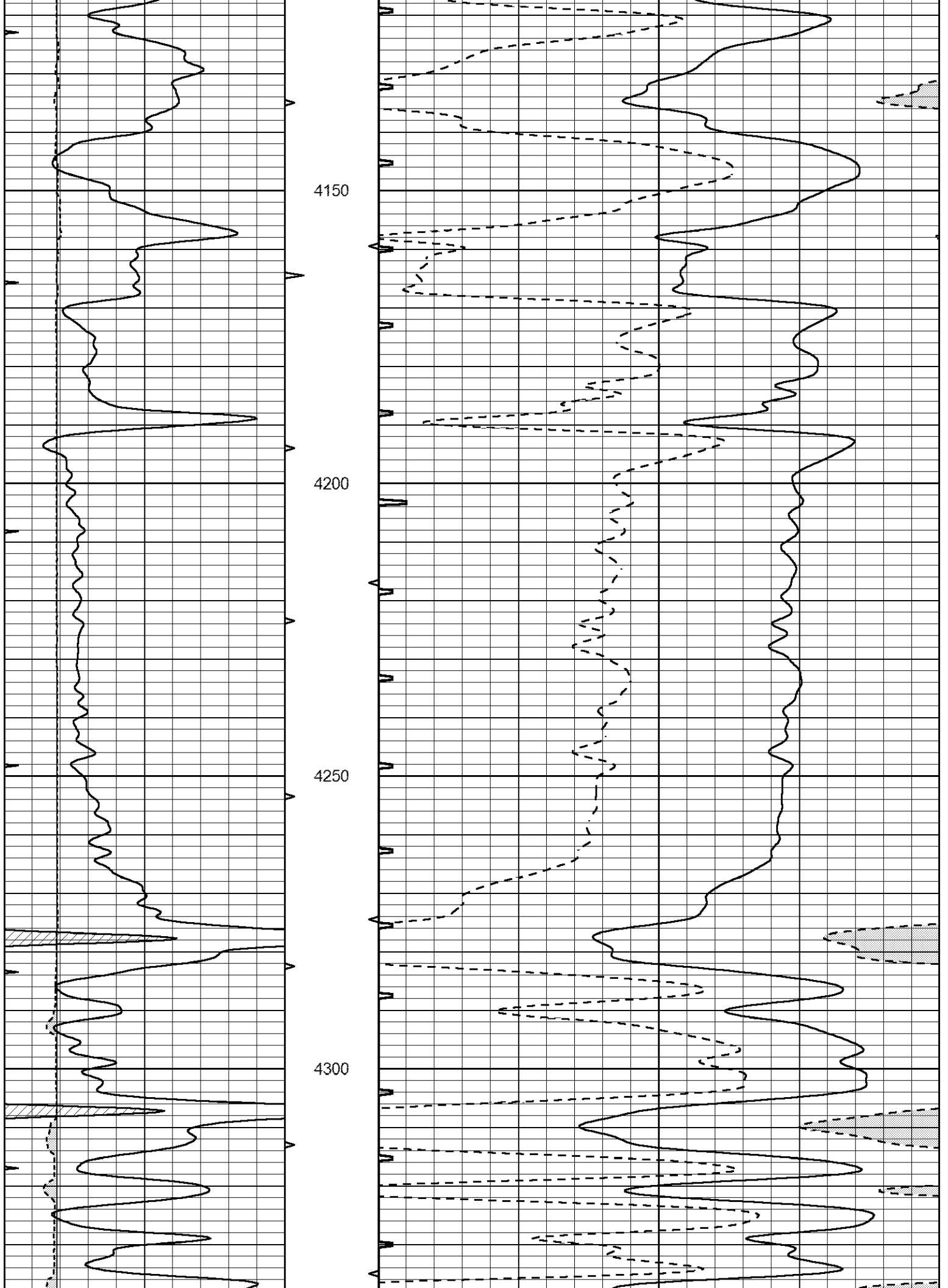


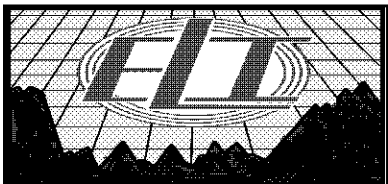
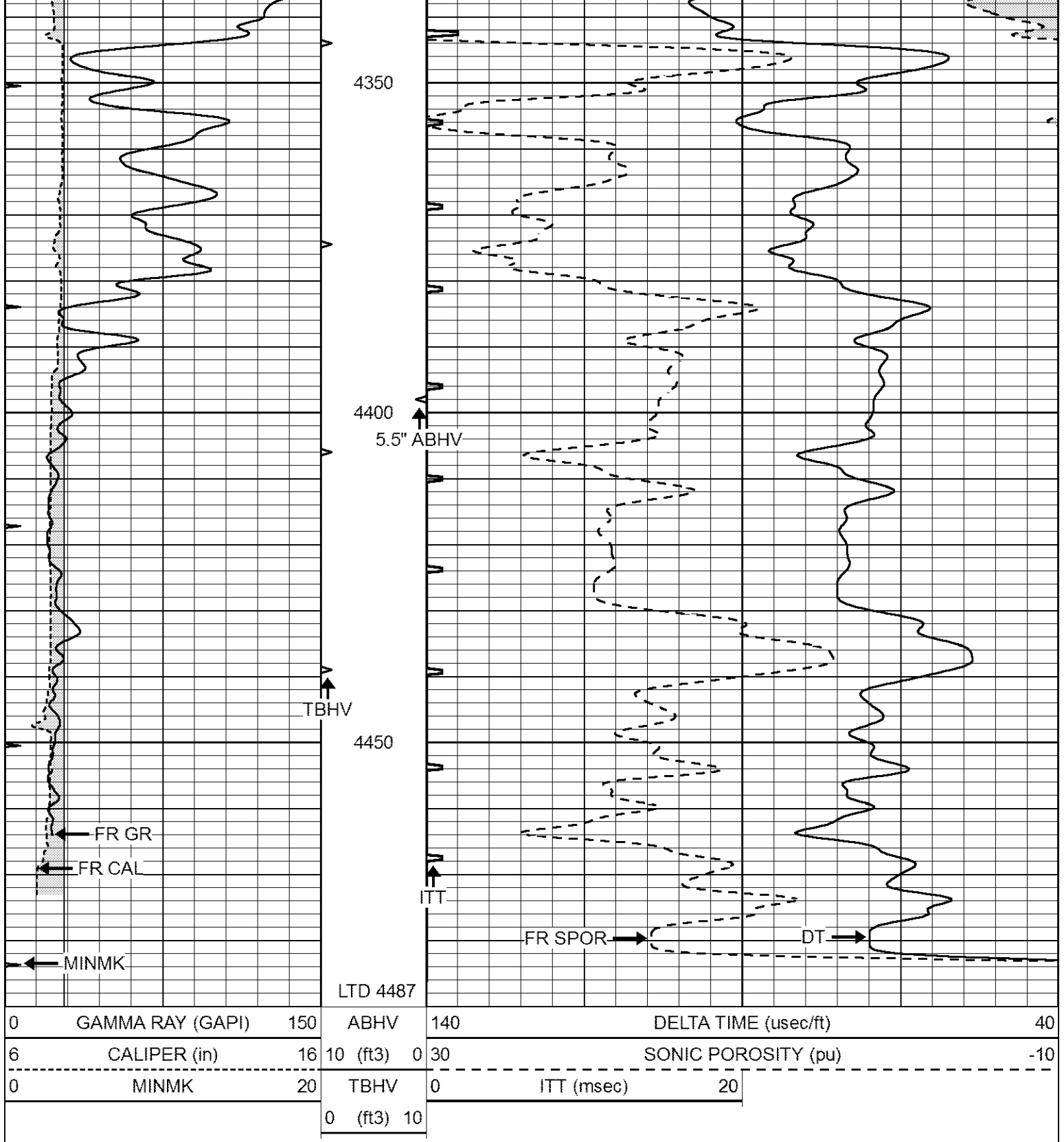








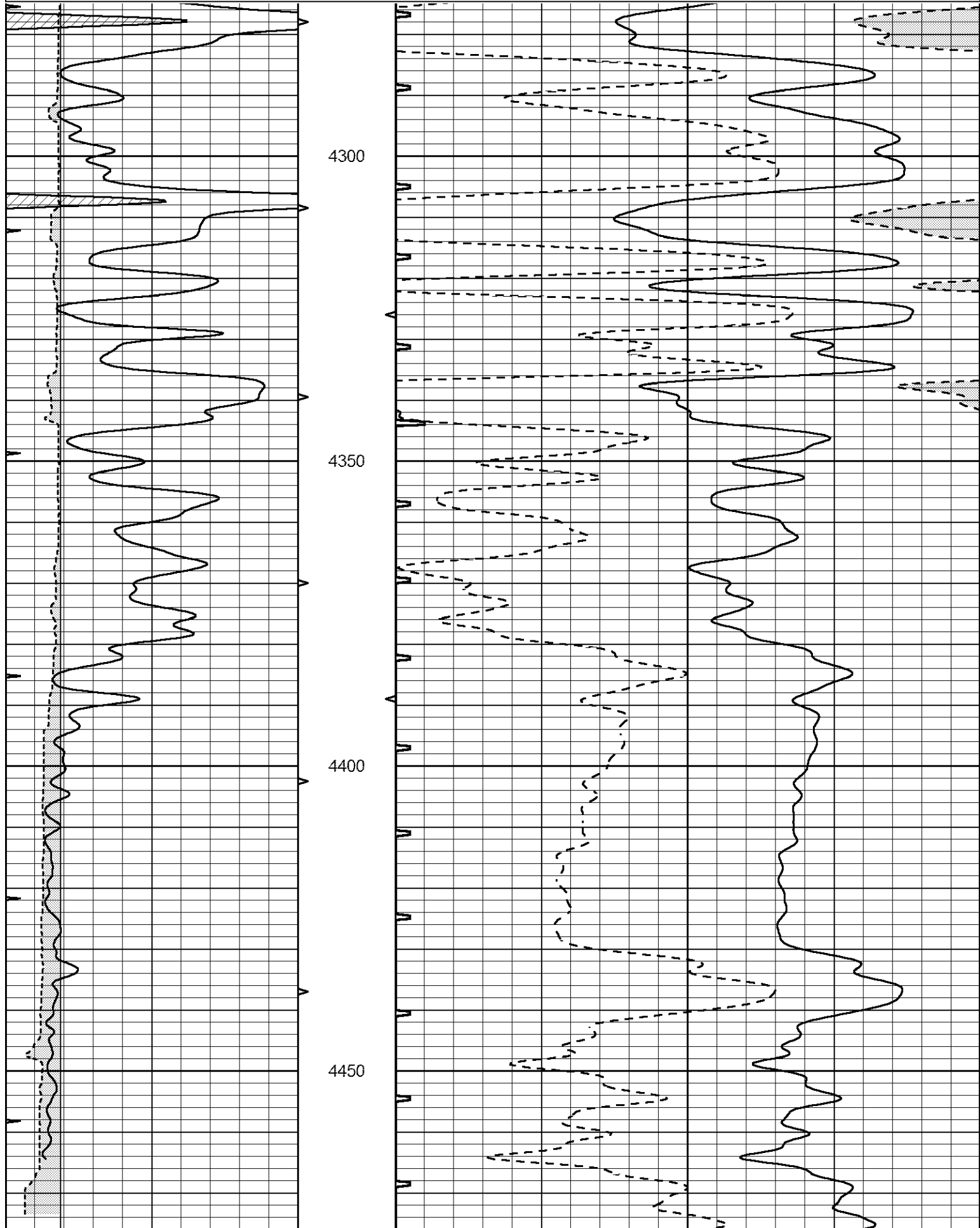


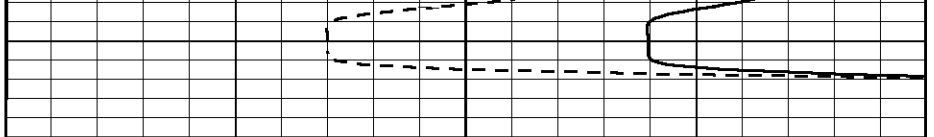
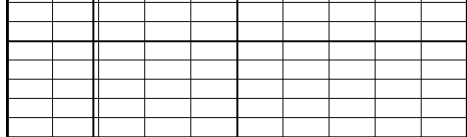


REPEAT SECTION

Database File 6754pe.db
 Dataset Pathname pass6R
 Presentation Format _slt
 Dataset Creation Sat Jul 09 14:04:32 2022
 Charted by Depth in Feet scaled 1:240

0	GAMMA RAY (GAPI)	150	ABHV	140	DELTA TIME (usec/ft)	40	
6	CALIPER (in)	16	10 (ft3)	0	30	SONIC POROSITY (pu)	-10
0	MINMK	20	TBHV	0	ITT (msec)	20	
			0 (ft3)	10			





0	GAMMA RAY (GAPI)	150	ABHV	140	DELTA TIME (usec/ft)	40
6	CALIPER (in)	16	10 (ft3) 0	30	SONIC POROSITY (pu)	-10
0	MINMK	20	TBHV	0	ITT (msec)	20
			0 (ft3) 10			