



**COMPENSATED  
DENSITY/NEUTRON  
PE LOG**

Company KNIGHTON OIL COMPANY, INC.  
Well SELLS-BORNEMAN #A-1  
Field UNNAMED  
County TREGO State KANSAS

Location: API #: 15-195-23142-0000  
1495' FNL & 2175' FWL  
NW-NE-SE-NW  
SEC 29 TWP 15S RGE 23W  
Permanent Datum GROUND LEVEL Elevation 2438  
Log Measured From KELLY BUSHING 8' A.G.L.  
Drilling Measured From KELLY BUSHING  
Other Services  
DILMEL  
SONIC  
Elevation  
K.B. 2446  
D.F. 2444  
G.L. 2438

Date	7/9/22		
Run Number	ONE		
Depth Driller	4485		
Depth Logger	4487		
Bottom Logged Interval	4463		
Top Log Interval	3300		
Casing Driller	8 5/8" @ 232		
Casing Logger	232		
Bit Size	7 7/8		
Type Fluid in Hole	CHEMICAL MUD	CHLORIDES 3500 PPM	
Density / Viscosity	8.9/61		
PH / Fluid Loss	10.5/8.0		
Source of Sample	FLOWLINE		
Rm @ Meas. Temp	1.20 @ 80F		
Rmt @ Meas. Temp	.900 @ 80F		
Rmc @ Meas. Temp	1.44 @ 80F		
Source of Rmf / Rmc	MEASUREMENT		
Rm @ BHT	.900 @ 120F		
Time Circulation Stopped	2 HOURS		
Time Logger on Bottom	11:00 A.M.		
Maximum Recorded Temperature	120F		
Equipment Number	3802		
Location	HAYS, KANSAS		
Recorded By	COLE ROBBEN		
Witnessed By	CHRIS TOY		

<<< Fold Here >>>

All interpretations are opinions based on inferences from electrical or other measurements and we cannot and do not guarantee the accuracy or correctness of any interpretation, and we shall not, except in the case of gross or willful negligence on our part, be liable or responsible for any loss, costs, damages, or expenses incurred or sustained by anyone resulting from any interpretation made by any of our officers, agents or employees. These interpretations are also subject to our general terms and conditions set out in our current Price Schedule.

Comments

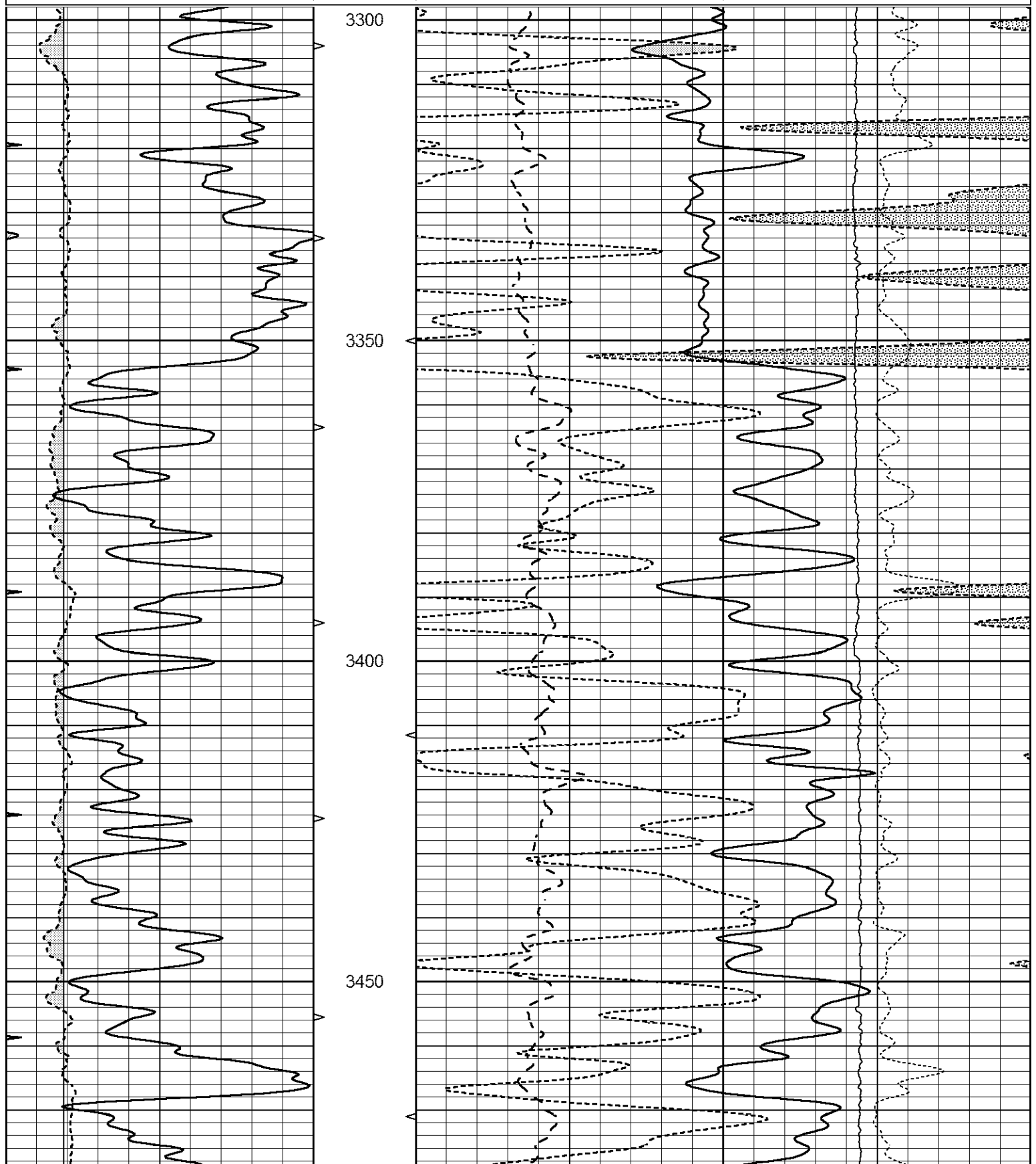
THANK YOU FOR USING ELI WIRELINE SERVICES, HAYS, KS. ( 785 ) 628-6395  
DIRECTIONS  
FROM WAKEENEY, KANSAS GO 19 MILES SOUTH ON HIGHWAY 283 TO ROAD CC,  
THEN 3/4 MILE WEST, 1/8 MILE SOUTH AND EAST INTO

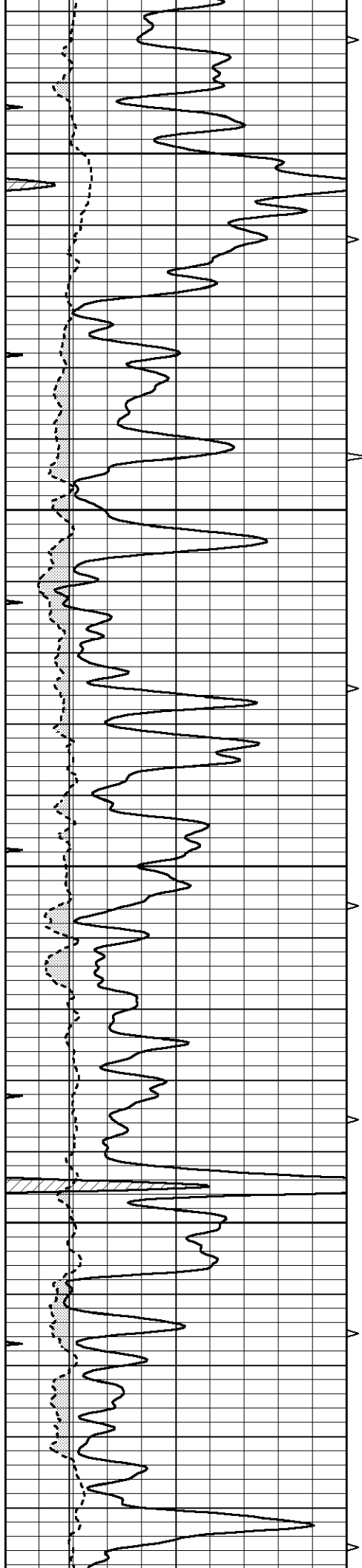


# MAIN SECTION

Database File 6754pe.db  
 Dataset Pathname pass4POR  
 Presentation Format \_ldt\_neu  
 Dataset Creation Sat Jul 09 12:32:06 2022  
 Charted by Depth in Feet scaled 1:240

0	GAMMA RAY (GAPI)	150	ABHV	30	COMPENSATED DENSITY (pu)		-10
6	CALIPER (in)	16	10 (ft3)	0	COMPENSATED NEUTRON (pu)		-10
0	MINMK	20	TBHV	0	PE	10	-0.25 CORRECTION (g/cc) 0.25
			0 (ft3)	10		0	LTEN (lb) 5000



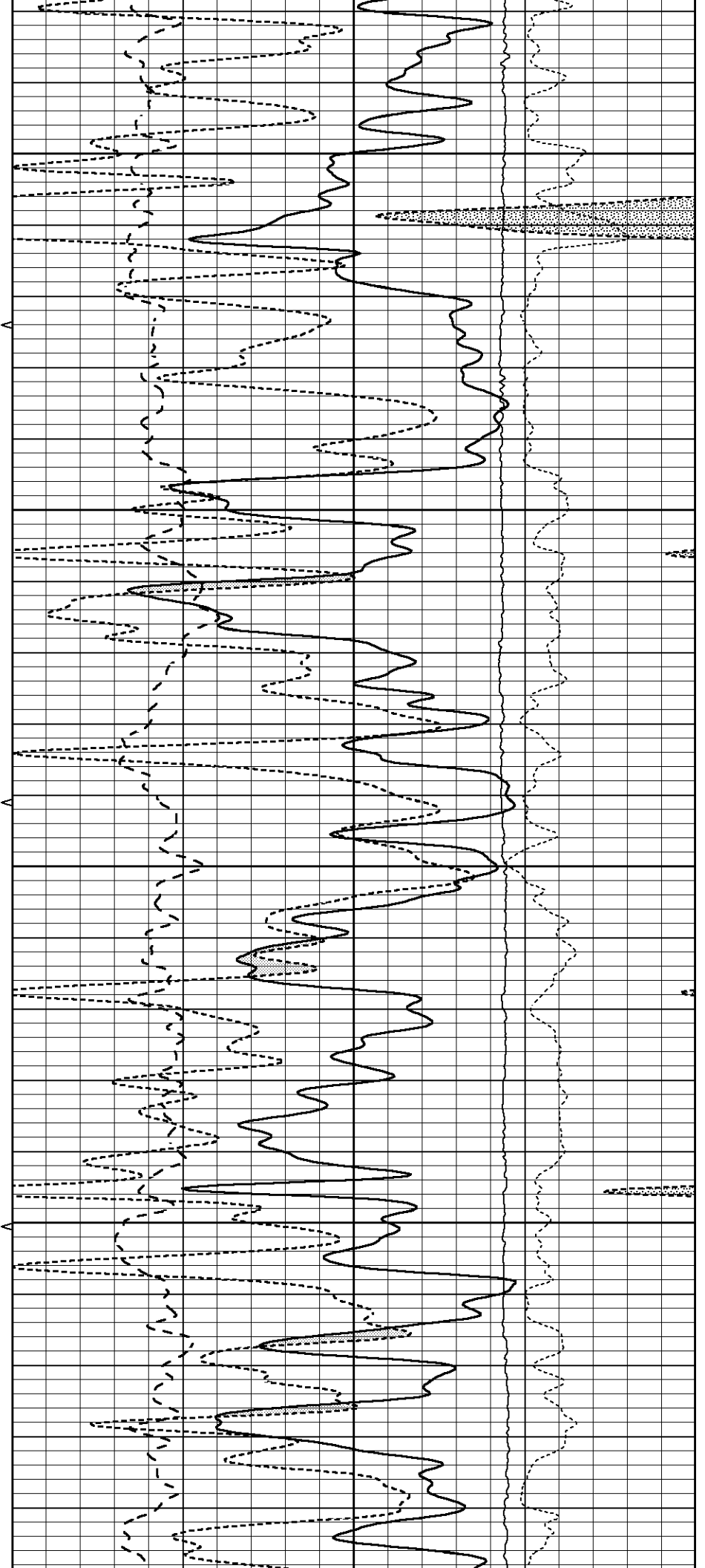


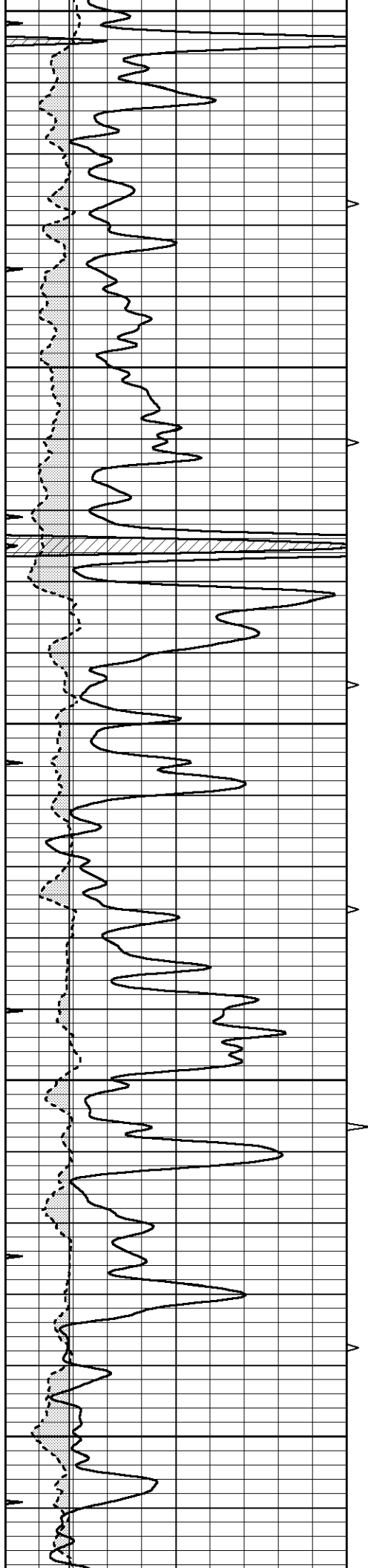
3500

3550

3600

3650





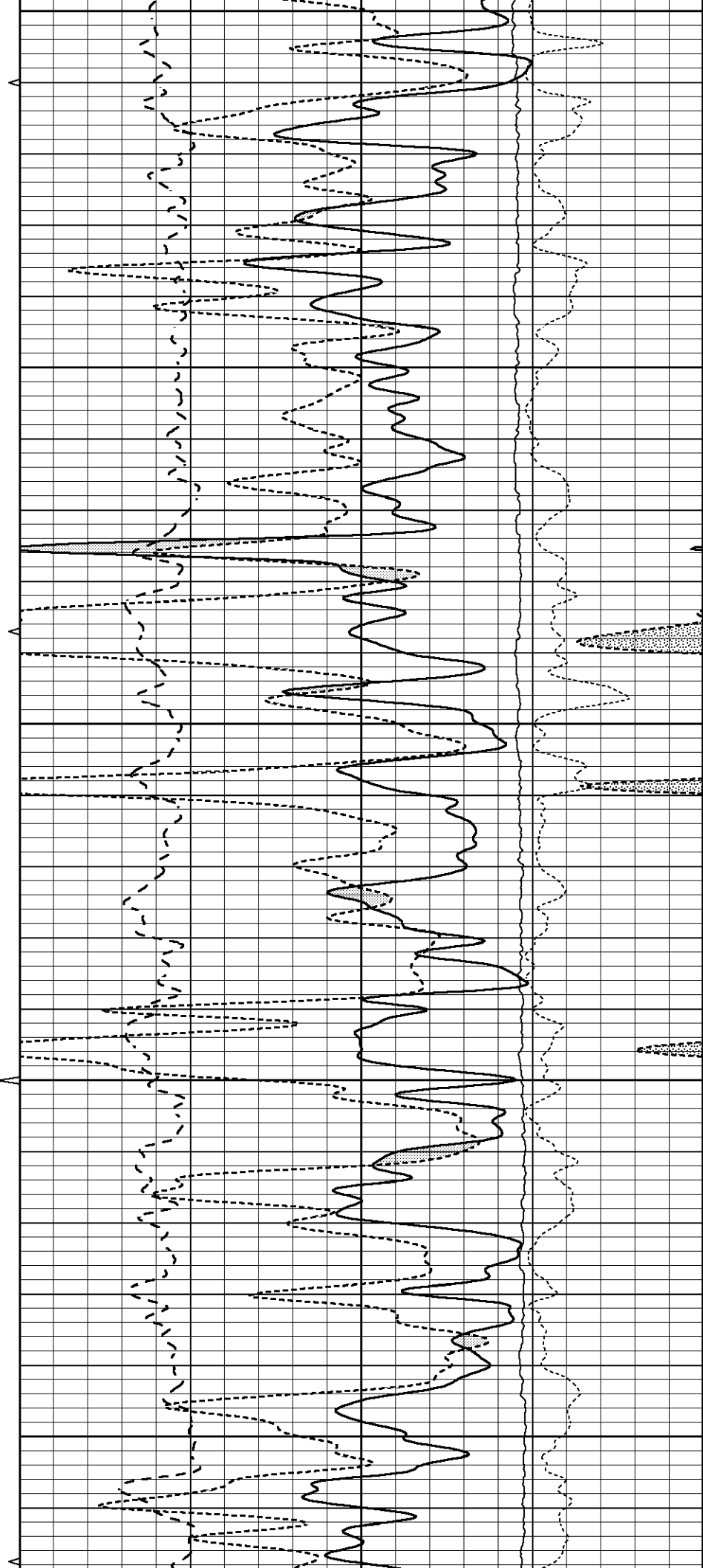
3700

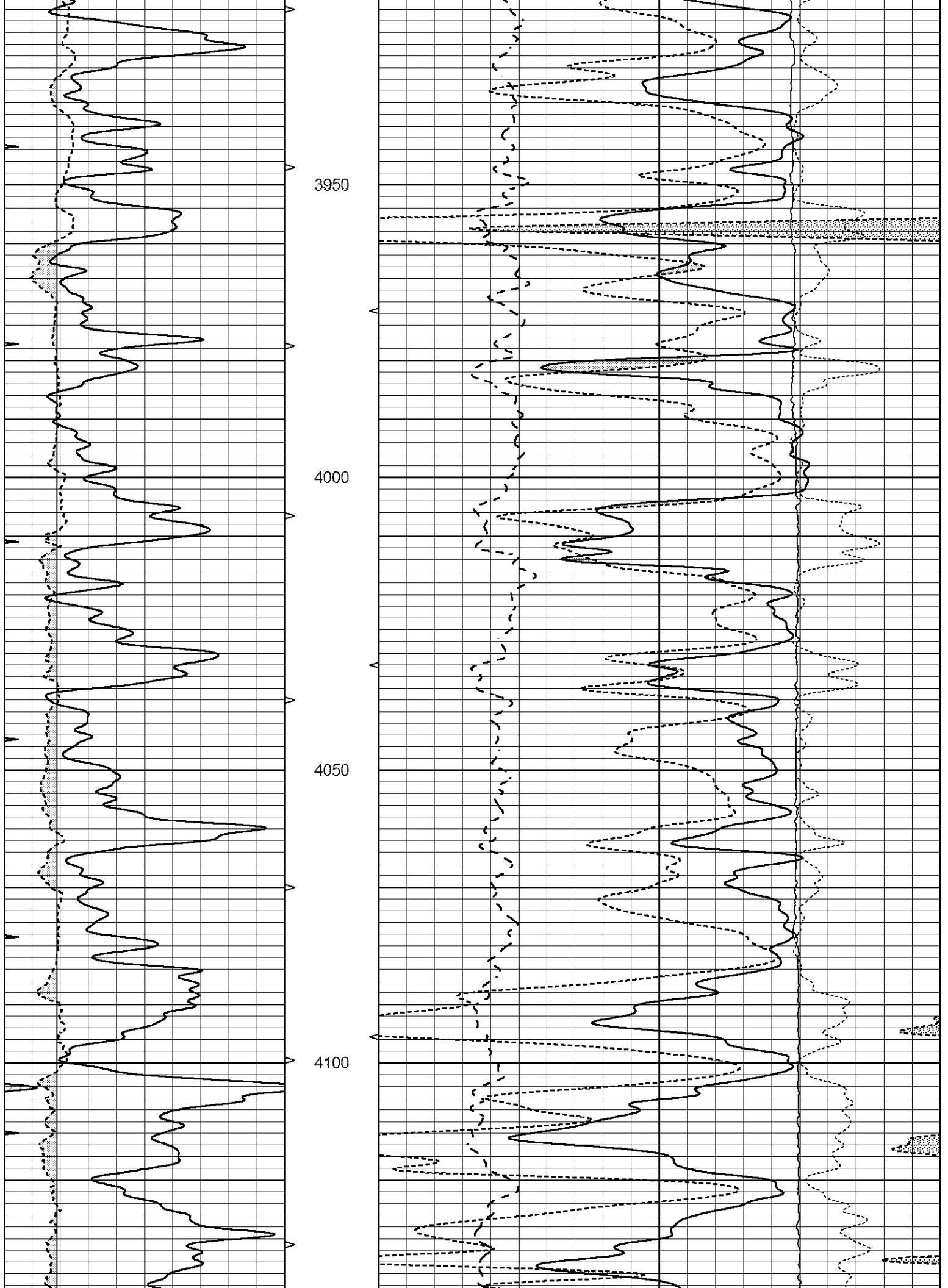
3750

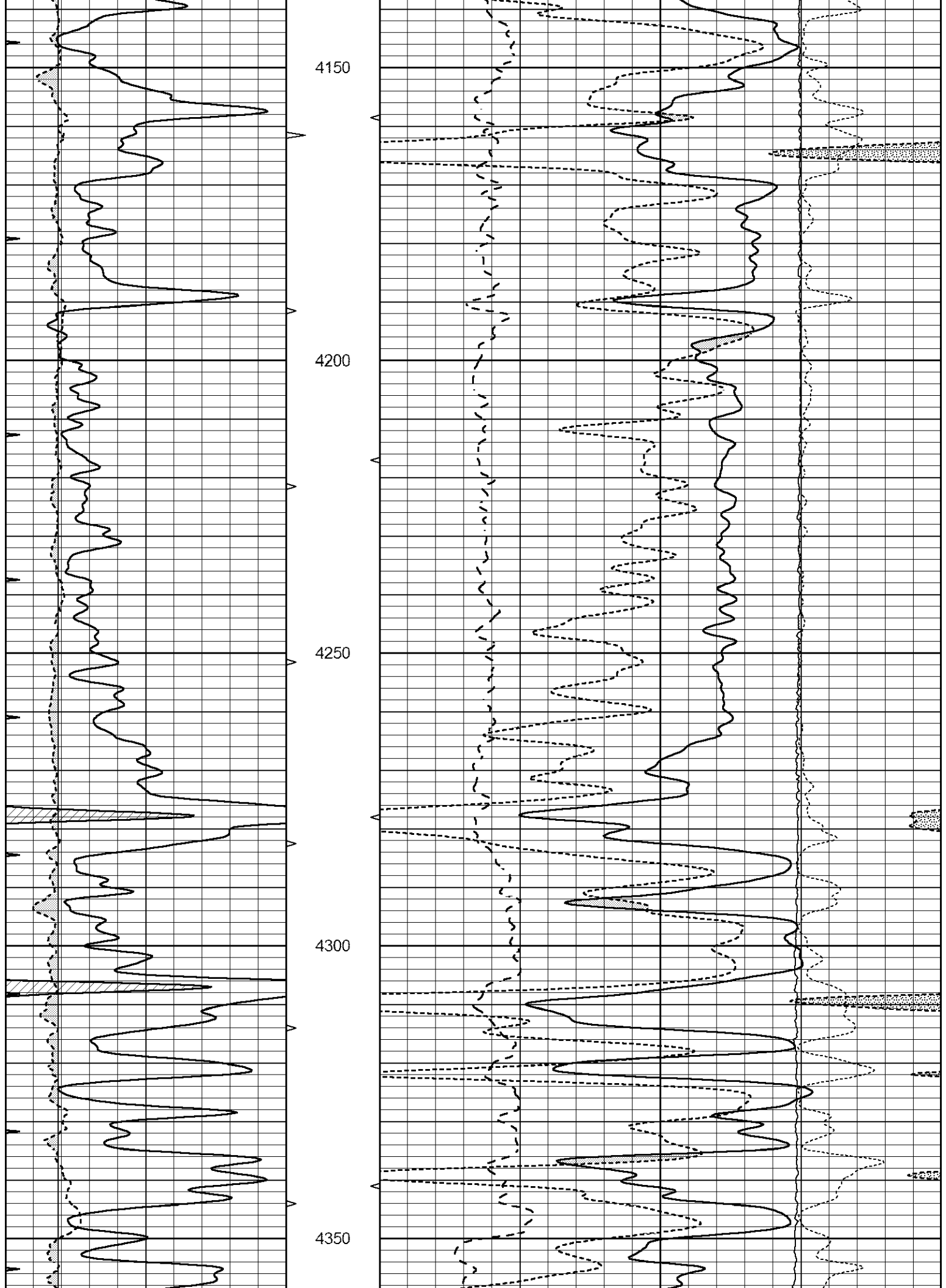
3800

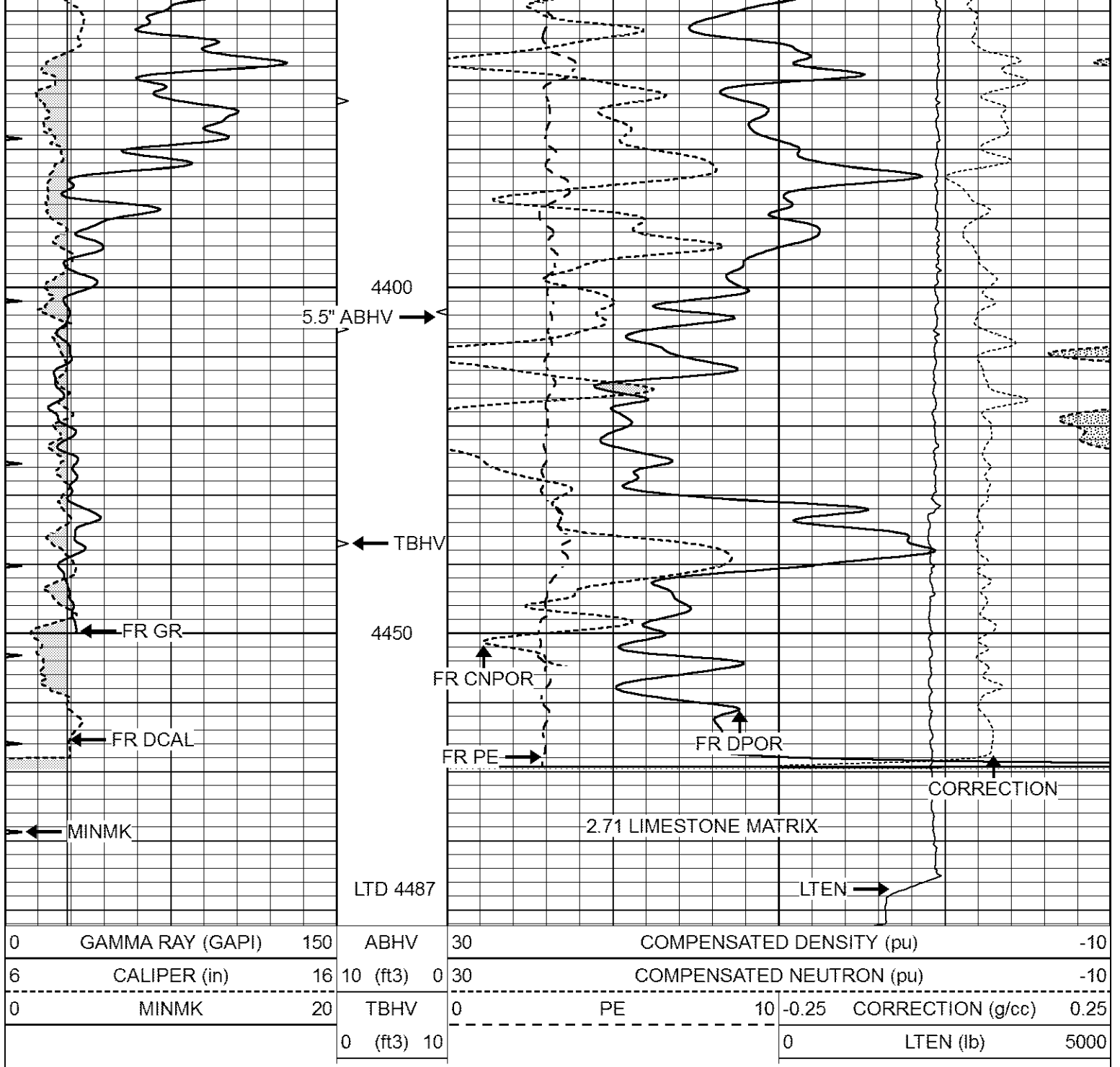
3850

3900





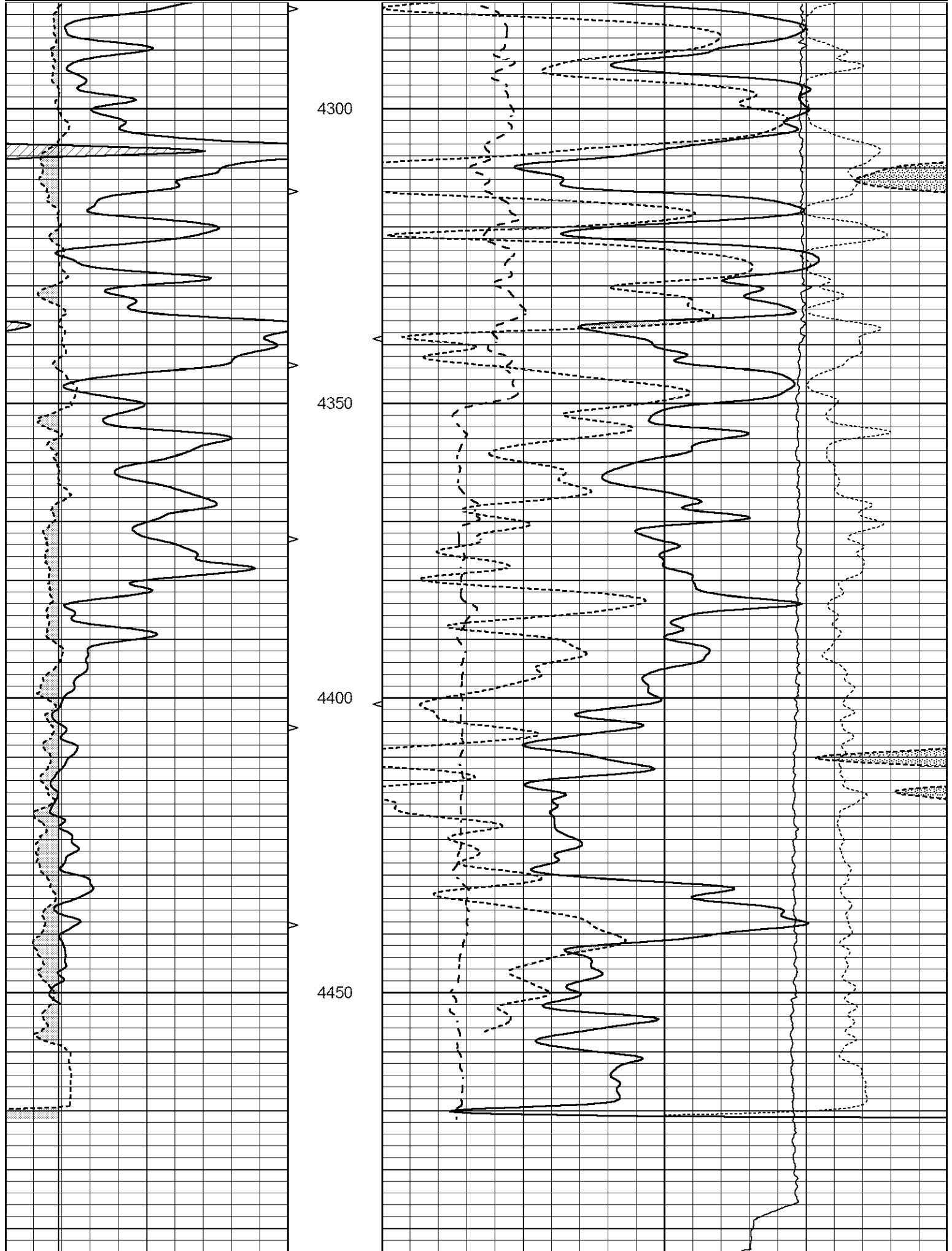




# REPEAT SECTION

Database File 6754pe.db  
 Dataset Pathname pass2R  
 Presentation Format \_ldt\_neu  
 Dataset Creation Sat Jul 09 12:49:42 2022  
 Charted by Depth in Feet scaled 1:240

0	GAMMA RAY (GAPI)	150	ABHV	30	COMPENSATED DENSITY (pu)	-10
6	CALIPER (in)	16	10 (ft3) 0	30	COMPENSATED NEUTRON (pu)	-10
			TBHV	0	PE	10 -0.25 CORRECTION (g/cc) 0.25
			0 (ft3) 10			0 LTEN (lb) 5000



0	GAMMA RAY (GAPI)	150	ABHV	30	COMPENSATED DENSITY (pu)	-10
6	CAI LPER (in)	16	10 (#3)	0 30	COMPENSATED NEUTRON (pu)	-10



Rib Angle : 45.1  
Spine Angle : 75.1

Rib Slope : 1.003  
Spine Slope : 3.752

Density/Spine Ratio : 0.575  
Spine Intercept : -24.0

Before Survey Verification

Performed Wed Dec 31 18:00:00 1969

Window 1	0.0	0.0	0.0	0.0	cps
Window 2	0.0	0.0	0.0	0.0	cps
Window 3	0.0	0.0	0.0	0.0	cps
Window 4	0.0	0.0	0.0	0.0	cps
Long Space	0.0	0.0	0.0	0.0	cps
Short Space	0.0	0.0	0.0	0.0	cps
Measured Rho		0.0000	0.0000	0.0000	g/cc
Measured Correction		0.0000	0.0000	0.0000	g/cc
Measured Pe			0.0000	0.0000	

After Survey Verification

Performed Wed Dec 31 18:00:00 1969

Window 1	0.0	0.0	0.0	0.0	cps
Window 2	0.0	0.0	0.0	0.0	cps
Window 3	0.0	0.0	0.0	0.0	cps
Window 4	0.0	0.0	0.0	0.0	cps
Long Space	0.0	0.0	0.0	0.0	cps
Short Space	0.0	0.0	0.0	0.0	cps
Measured Rho		0.0000	0.0000	0.0000	g/cc
Measured Correction		0.0000	0.0000	0.0000	g/cc
Measured Pe			0.0000	0.0000	

Compensated Neutron Calibration Report

Serial Number: 080621PMC  
Tool Model: NABORS

PRE-SURVEY VERIFICATION

Detector	Readings	Measured	Target
Short Space	cps		
Long Space	cps	pu	pu

POST-SURVEY VERIFICATION

Detector	Readings	Measured	Target
Short Space	cps		
Long Space	cps	pu	pu

Gamma Ray Calibration Report

Serial Number: 7  
Tool Model: Probe1  
Performed: Thu May 26 08:56:46 2022

Calibrator Value: 1.0 GAPI

Background Reading: 0.0 cps  
Calibrator Reading: 1.0 cps

Sensitivity: 0.5500 GAPI/cps