



MIDWEST SURVEYS
 LOGGING - PERFORATING - CONSULTING SERVICES
 P.O. Box 68, Osawatomie, KS 68064
 913 / 765 - 2128

GAMMA RAY / NEUTRON / CCL

File No. _____

Company **Altavista Energy, Inc.**

Well **Marjorie Crofts No. 1-15**

Field **Unnamed**

County **Coffey** State **Kansas**

Location **495' FSL & 3175' FEL**

Other Services **Perforate**

Sec. **14** Twp. **22s** Rge. **18e** Elevation
 Permament Datum **GL** Log Measured From **GL** K/B **NA**
 Drilling Measured From **GL** D/F **NA** G/L **1029'**

Date **11-22-2022**

Run Number **One**

Depth Driller **1046.0**

Depth Logger **1047.0**

Bottom Logged Interval **1046.0**

Top Log Interval **20.0**

Fluid Level **Full**

Type Fluid **Water**

Density / Viscosity **NA**

Salinity - PPM Cl **NA**

Max. Recorded Temp **NA**

Estimated Cement Top **NA**

Equipment No. **107** Location **Oswatimie**

Recorded By **Steve Windisch**

Witnessed By **Doug Evans**

BOREHOLE RECORD				CASINGS RECORD			
Run No.	BIT	FROM	TO	SIZE	WGT	FROM	TO
One	9.875"	50.0	50.0	7.00"	21.0#	0.0	50.00
Two	5.875"	50.0	1046.0	2.875"	6.5#	0.0	1080.50
				Battle	Set	At	1053.75

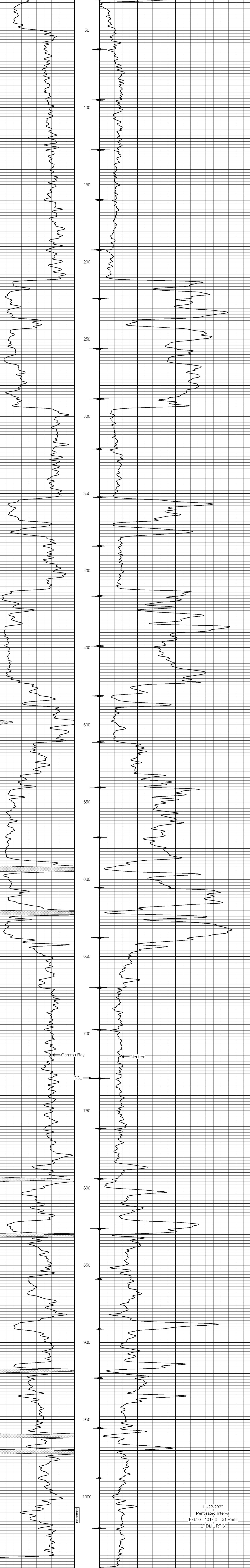
<<< Fold Here >>>

All interpretations are opinions based on inferences from electrical or other measurements and we cannot and do not guarantee the accuracy or correctness of any interpretation, and we shall not, except in the case of gross or willful negligence on our part, be liable or responsible for any loss, costs, damages, or expenses incurred or sustained by anyone resulting from any interpretation made by any of our officers, agents or employees. These interpretations are also subject to our general terms and conditions set out in our current Price Schedule.

Comments

Drilling Contractor :
McGown Drilling, Inc.

Database File: m crofts 5i.db
 Dataset Pathname: pass1
 Presentation Format: gr-n-ccl
 Dataset Creation: Tue Nov 22 11:41:50 2022 by Log SCH 111116
 Charted by: Depth in Feet scaled 1:240



11-22-2022
 Perforated Interval
 1007.0 - 1017.0 31 Perfs
 2" DML RTG