



**COMPENSATED
DENSITY/NEUTRON
PE LOG**

Company ANCHOR BAY PETROLEUM, LLC.
Well RANKIN #2
Field SAUER
County ELLIS
State KANSAS

Company ANCHOR BAY PETROLEUM, LLC.
Well RANKIN #2
Field SAUER
County ELLIS State KANSAS

Location: API #: 15-051-27033-0000
3623' FSL & 2310' FEL
S/2 - NW - SW - NE
SEC 33 TWP 13S RGE 20W
Permanent Datum GROUND LEVEL Elevation 2249
Log Measured From KELLY BUSHING 5' A.G.L.
Drilling Measured From KELLY BUSHING
Other Services DILMEL
Elevation
K.B. 2254
D.F. 2252
G.L. 2249

Date	7/6/22
Run Number	ONE
Depth Driller	3940
Depth Logger	3940
Bottom Logged Interval	3916
Top Log Interval	3000
Casing Driller	8 5/8" @ 220'
Casing Logger	220
Bit Size	7 7/8"
Type Fluid in Hole	CHEMICAL MUD
Density / Viscosity	9.4/60
pH / Fluid Loss	10.0/6.8
Source of Sample	FLOWLINE
Rm @ Meas. Temp	.800 @ 90F
Rmf @ Meas. Temp	.600 @ 90F
Rmc @ Meas. Temp	.960 @ 90F
Source of Rmf / Rmc	MEASURED
Rm @ BHT	.626 @ 115F
Time Circulation Stopped	2 HOURS
Time Logger on Bottom	6:30 P.M.
Maximum Recorded Temperature	115F
Equipment Number	8916
Location	HAYS, KANSAS
Recorded By	JEFF LUEBBERS
Witnessed By	ED GLASSMAN

<<< Fold Here >>>

All interpretations are opinions based on inferences from electrical or other measurements and we cannot and do not guarantee the accuracy or correctness of any interpretation, and we shall not, except in the case of gross or willful negligence on our part, be liable or responsible for any loss, costs, damages, or expenses incurred or sustained by anyone resulting from any interpretation made by any of our officers, agents or employees. These interpretations are also subject to our general terms and conditions set out in our current Price Schedule.

Comments

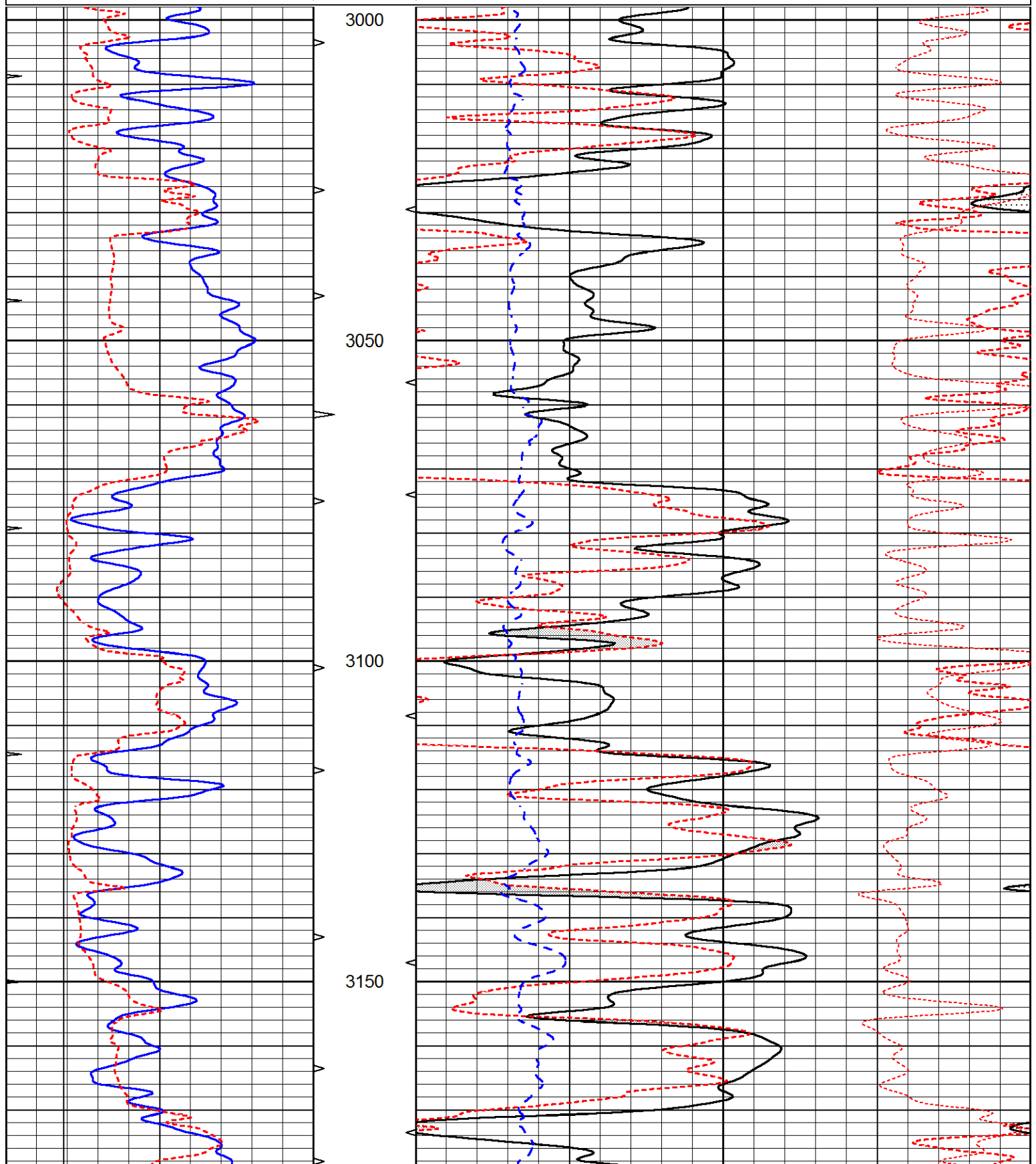
THANK YOU FOR USING ELI WIRELINE, HAYS, KS. (785) 628-6395
DIRECTIONS:
ELLIS, KS., 4S. ON BLKTOP TO "AIRBASE RD.", 1/2E., S. INTO

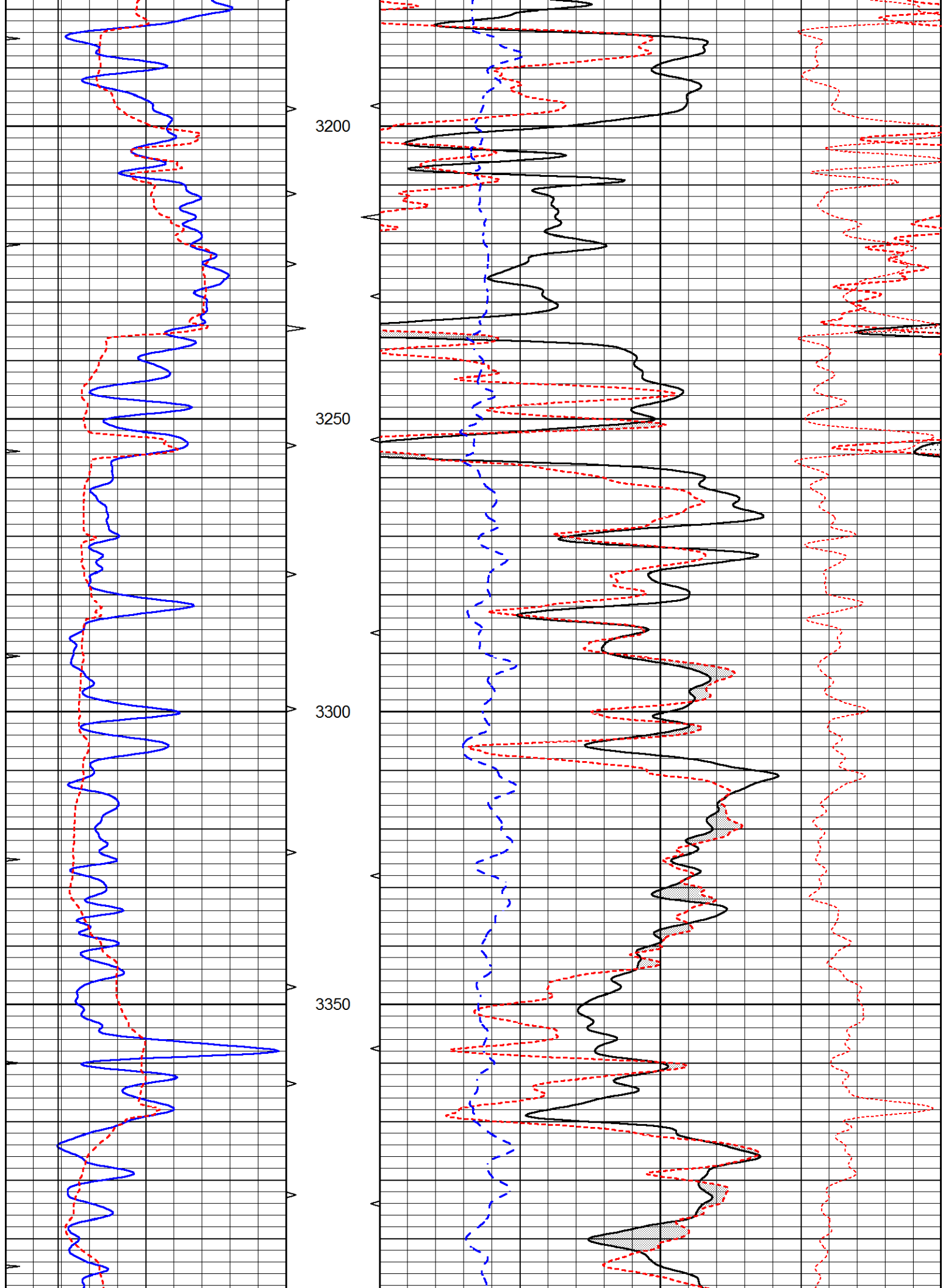


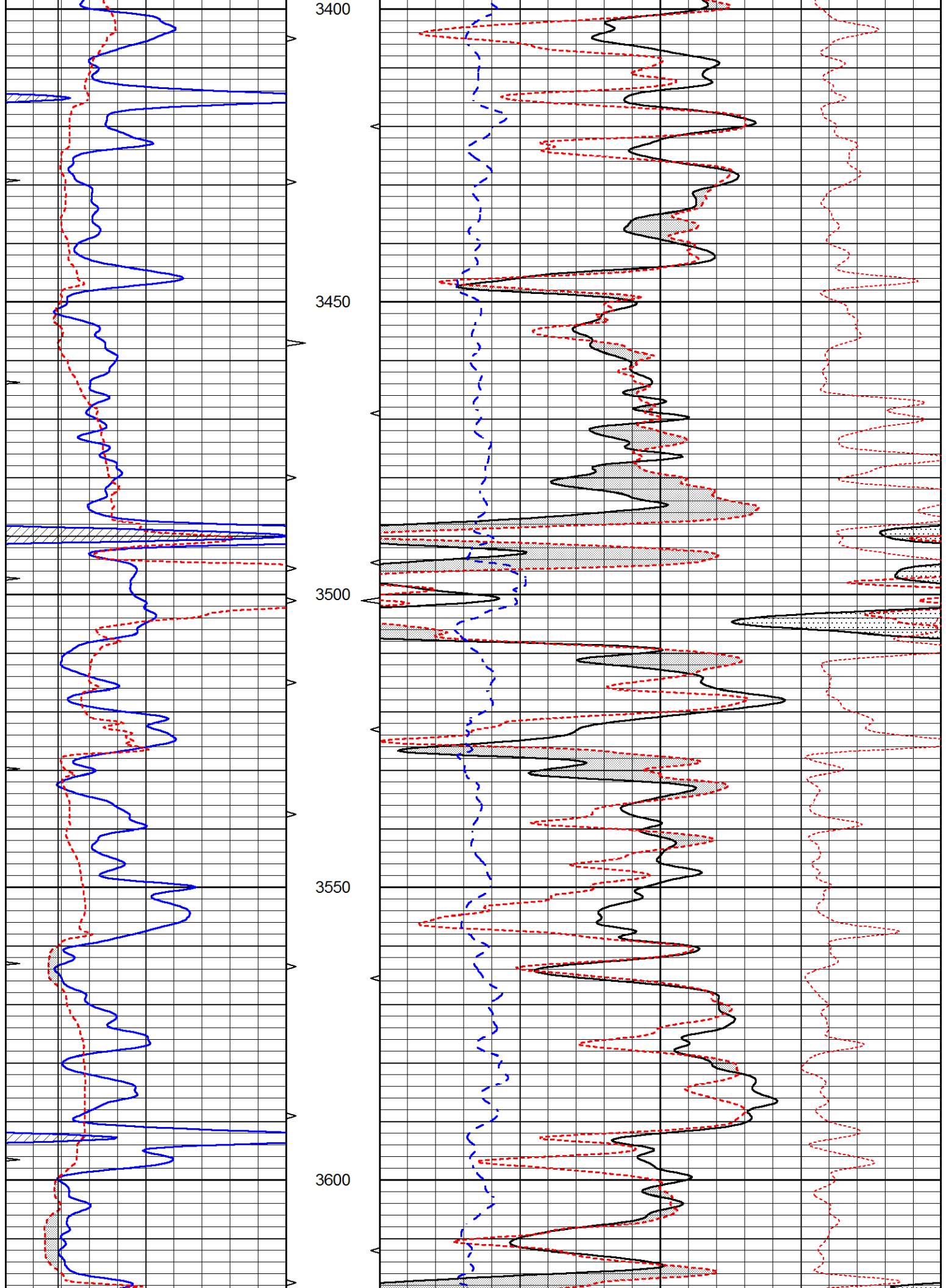
MAIN SECTION

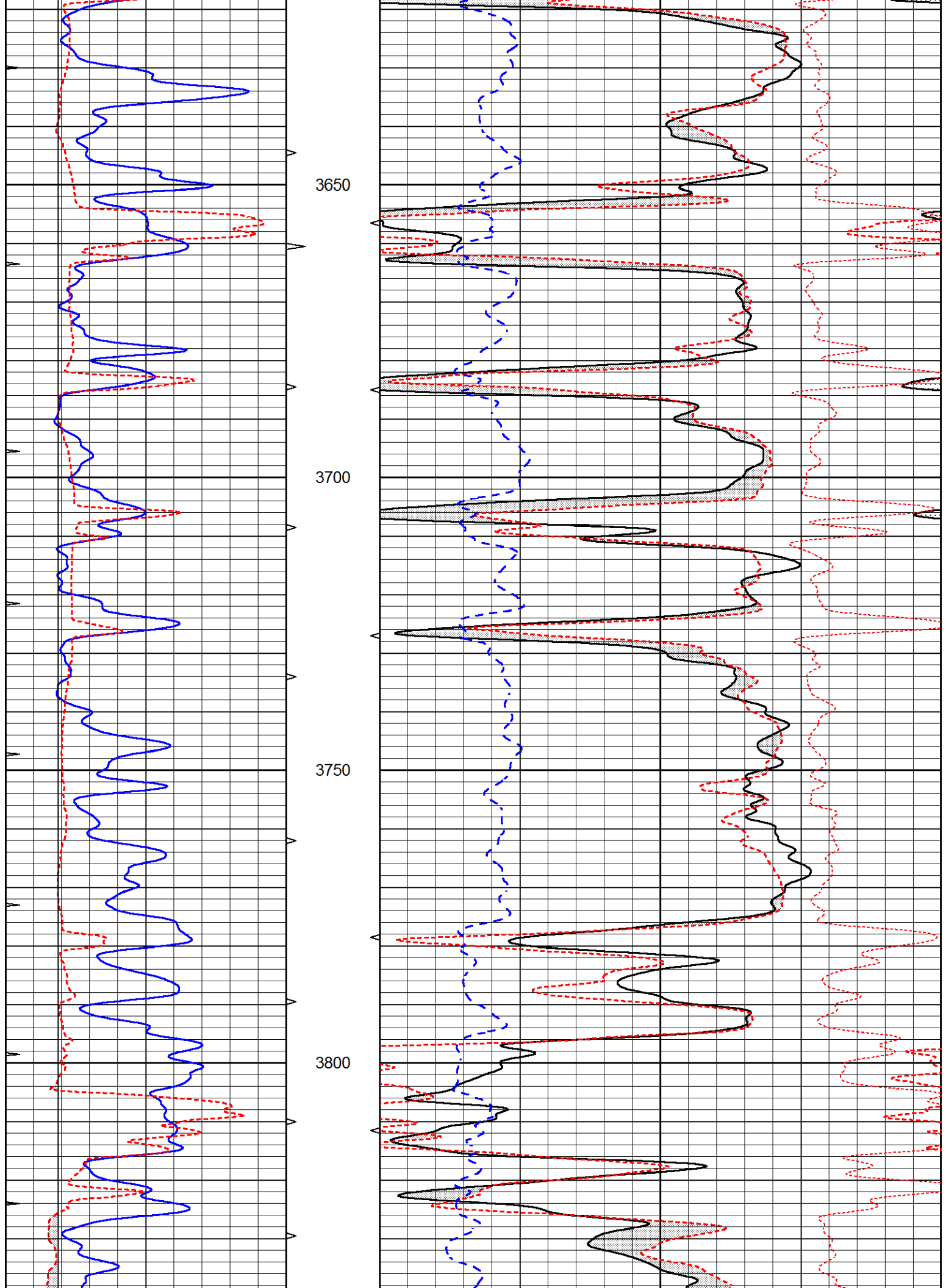
Database File 6706pe.db
 Dataset Pathname pass3.1M
 Presentation Format _ldt_neu
 Dataset Creation Wed Jul 06 20:26:36 2022
 Charted by Depth in Feet scaled 1:240

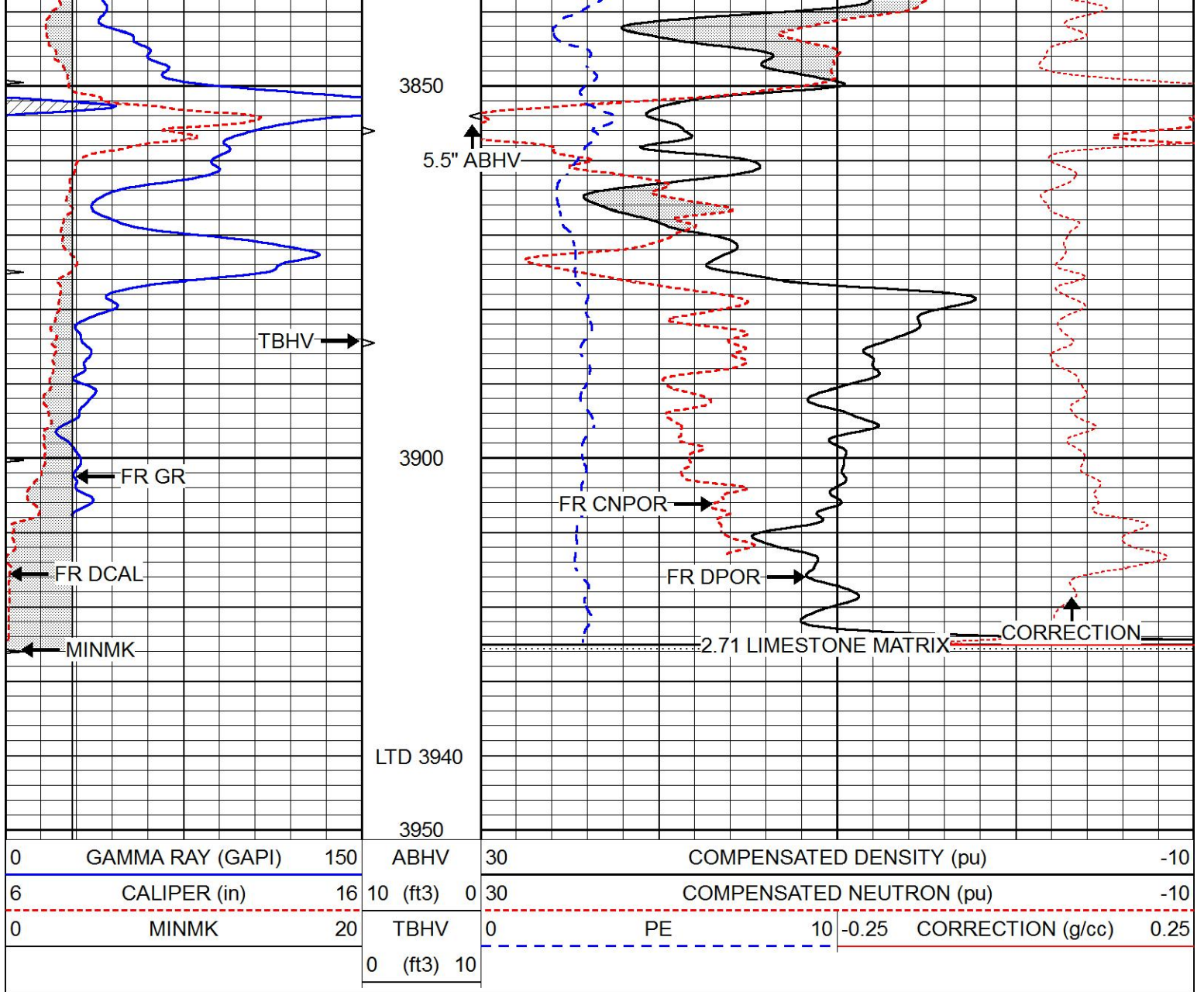
0	GAMMA RAY (GAPI)	150	ABHV	30	COMPENSATED DENSITY (pu)		-10
6	CALIPER (in)	16	10 (ft3)	0	COMPENSATED NEUTRON (pu)		-10
0	MINMK	20	TBHV	0	PE	10	-0.25
			0 (ft3)	10	CORRECTION (g/cc)		0.25







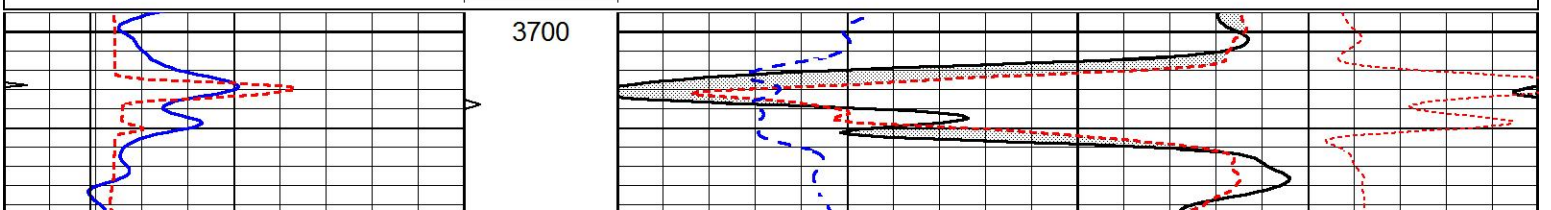


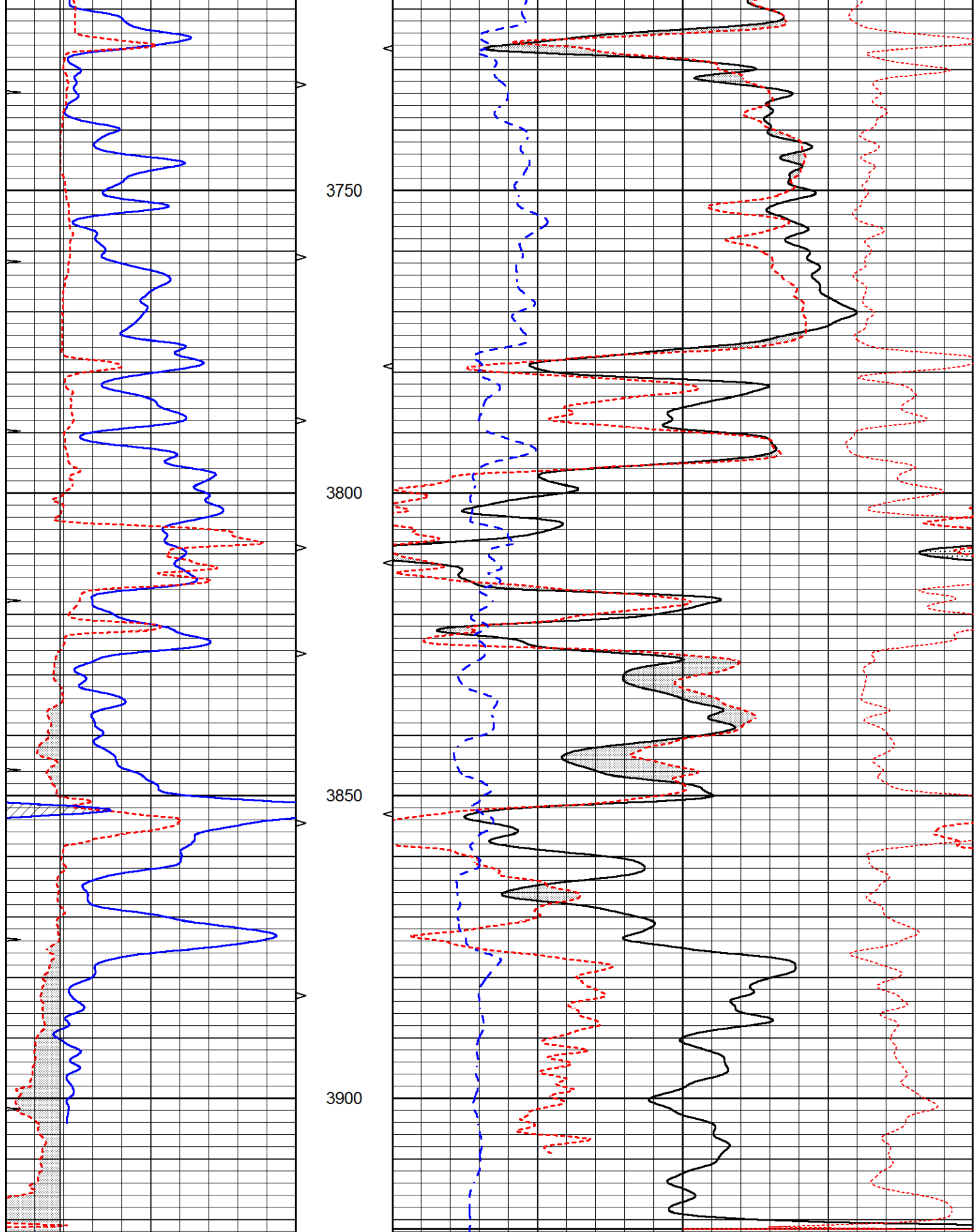


REPEAT SECTION

Database File 6706pe.db
 Dataset Pathname pass2.1R
 Presentation Format _ldt_neu
 Dataset Creation Wed Jul 06 20:02:07 2022
 Charted by Depth in Feet scaled 1:240

0	GAMMA RAY (GAPI)	150	ABHV	30	COMPENSATED DENSITY (pu)	-10			
6	CALIPER (in)	16	10 (ft3)	0	30	COMPENSATED NEUTRON (pu)	-10		
0	MINMK	20	TBHV	0	PE	10	-0.25	CORRECTION (g/cc)	0.25
			0 (ft3)	10					





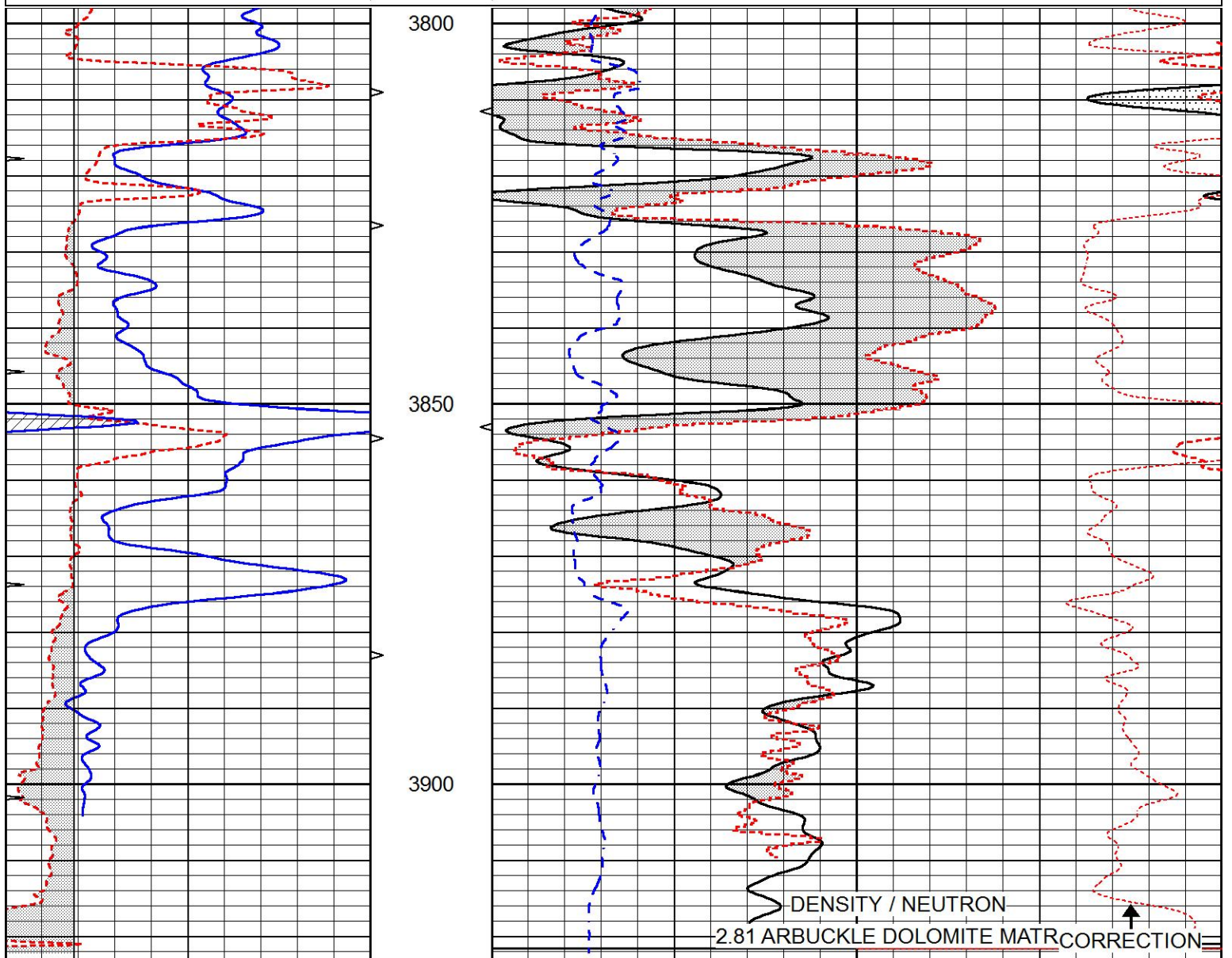
0	GAMMA RAY (GAPI)	150	ABHV	30	COMPENSATED DENSITY (pu)			-10	
6	CALIPER (in)	16	10 (ft3)	0	30	COMPENSATED NEUTRON (pu)			-10
0	MINMK	20	TBHV	0	PE	10	-0.25	CORRECTION (g/cc)	0.25
			0 (ft3)	10					



DOLOMITE MATRIX

Database File 6706pe.db
 Dataset Pathname pass2.2D
 Presentation Format _ldt_neu
 Dataset Creation Wed Jul 06 20:10:51 2022
 Charted by Depth in Feet scaled 1:240

0	GAMMA RAY (GAPI)	150	ABHV	30	COMPENSATED DENSITY (pu)			-10	
6	CALIPER (in)	16	10 (ft3)	0	30	COMPENSATED NEUTRON (pu)			-10
0	MINMK	20	TBHV	0	PE	10	-0.25	CORRECTION (g/cc)	0.25
			0 (ft3)	10					



0	GAMMA RAY (GAPI)	150	ABHV	30	COMPENSATED DENSITY (pu)				-10	
6	CALIPER (in)	16	10 (ft3)	0	30	COMPENSATED NEUTRON (pu)				-10
0	MINMK	20	TBHV	0	PE	10	-0.25	CORRECTION (g/cc)	0.25	
			0 (ft3)	10						

Calibration Report

Database File 6706pe.db
 Dataset Pathname pass3.1M
 Dataset Creation Wed Jul 06 20:26:36 2022

Dual Induction Calibration Report

Serial-Model: PROBE8-DILG
 Surface Cal Performed: Wed Jul 06 19:19:08 2022
 Downhole Cal Performed: Mon Sep 10 14:28:38 2018
 After Survey Verification Performed: Mon Sep 10 14:28:40 2018

Surface Calibration

Loop:	Readings				References			Results	
	Air	Loop			Air	Loop		m	b
Deep	0.015	0.648	V	0.000	400.000	mmho/m	620.000	5.000	
Medium	0.029	0.796	V	0.000	464.000	mmho/m	600.000	-11.000	
Internal:	Zero	Cal		Zero	Cal		m	b	
Deep	0.017	0.657	V	0.000	400.000	mmho/m	625.153	-10.619	
Medium	0.016	0.757	V	0.000	464.000	mmho/m	625.992	-9.739	

Downhole Calibration

	Readings				References			Results	
	Zero	Cal			Zero	Cal		m'	b'
Deep	0.000	0.000	mmho/m	2.011	405.777	mmho/m	1.000	0.000	
Medium	0.000	0.000	mmho/m	7.590	503.393	mmho/m	1.000	0.000	
LL3		7.500	V		1500.000	Ohm-m			
		0.000	V		20.000	Ohm-m			
		-7.200	V		3800.000	mmho-m			

After Survey Verification

	Readings				Targets			Results	
	Zero	Cal			Zero	Cal		m'	b'
Deep	0.000	0.000	mmho/m	0.000	0.000	mmho/m	0.000	0.000	
Medium	0.000	0.000	mmho/m	0.000	0.000	mmho/m	0.000	0.000	
LL3		1.000	Ohm-m		1.000	Ohm-m			
		0.000	Ohm-m		0.000	Ohm-m			
		1.000	mmho-m		1.000	mmho-m			

Litho Density Calibration Report

Serial: 002N Model: PRB

Master Calibration

Performed Tue Mar 10 15:08:00 2020

	Background	Magnesium	Aluminum	Aluminum+Fe	
Window 1	780.1	6981.9	2088.6	1871.2	cps
Window 2	718.6	5898.2	1813.8	1664.1	cps
Window 3	580.0	2989.5	1088.0	1039.1	cps
Window 4	172.8	175.7	175.3	173.5	cps
Long Space	0.0	5179.6	1095.2	945.5	cps
Short Space	1.1	1228.6	821.2	690.4	cps
Rho		1.7100	2.5900	0.0000	g/cc
Pe		2.0000	2.7500	5.7900	

Rib Angle : 45.5 Rib Slope : 1.016 Density/Spine Ratio : 0.548
 Spine Angle : 75.5 Spine Slope : 3.857 Spine Intercept : -18.9

Before Survey Verification

Performed Wed Dec 31 18:00:00 1969

	Background	Magnesium	Aluminum	Aluminum+Fe	
Window 1	0.0	0.0	0.0	0.0	cps
Window 2	0.0	0.0	0.0	0.0	cps
Window 3	0.0	0.0	0.0	0.0	cps
Window 4	0.0	0.0	0.0	0.0	cps
Long Space	0.0	0.0	0.0	0.0	cps
Short Space	0.0	0.0	0.0	0.0	cps
Measured Rho		0.0000	0.0000	0.0000	g/cc
Measured Correction		0.0000	0.0000	0.0000	g/cc
Measured Pe			0.0000	0.0000	

After Survey Verification

Performed Wed Dec 31 18:00:00 1969

	Background	Magnesium	Aluminum	Aluminum+Fe	
Window 1	0.0	0.0	0.0	0.0	cps
Window 2	0.0	0.0	0.0	0.0	cps
Window 3	0.0	0.0	0.0	0.0	cps
Window 4	0.0	0.0	0.0	0.0	cps
Long Space	0.0	0.0	0.0	0.0	cps
Short Space	0.0	0.0	0.0	0.0	cps
Measured Rho		0.0000	0.0000	0.0000	g/cc
Measured Correction		0.0000	0.0000	0.0000	g/cc
Measured Pe			0.0000	0.0000	

Compensated Neutron Calibration Report

Serial Number: 6I
 Tool Model: G

CALIBRATION

Detector	Readings	Target	Normalization
Short Space	1.00 cps	1.00 cps	1.0000
Long Space	1.00 cps	1.00 cps	1.0000

PRE-SURVEY VERIFICATION

	Detector	Readings	Measured	Target
1)	Short Space	cps		
	Long Space	cps	pu	pu
2)	Short Space	cps		
	Long Space	cps	pu	
3)	Short Space	cps		

Long Space

cps

pu

POST-SURVEY VERIFICATION

	Detector	Readings	Measured	Target
1)	Short Space	cps		
	Long Space	cps	pu	pu
2)	Short Space	cps		
	Long Space	cps	pu	pu
3)	Short Space	cps		
	Long Space	cps	pu	pu

Gamma Ray Calibration Report

Serial Number:	GR6	
Tool Model:	OPEN	
Performed:	Mon Jun 20 01:31:16 2022	
Calibrator Value:	150.0	GAPI
Background Reading:	0.0	cps
Calibrator Reading:	276.0	cps
Sensitivity:	0.8500	GAPI/cps