

MICRO LOG



Company ANCHOR BAY PETROLEUM, LLC.
 Well RANKIN #2
 Field SAUER
 County ELLIS State KANSAS

Location: API #: 15-051-27033-0000
 3623' FSL & 2310' FEL
 S/2 - NW - SW - NE
 SEC 33 TWP 13S RGE 20W
 Permanent Datum GROUND LEVEL Elevation 2249
 Log Measured From KELLY BUSHING 5' A.G.L.
 Drilling Measured From KELLY BUSHING
 Other Services CDL/CNL/PE DIL
 Elevation K.B. 2254
 D.F. 2252
 G.L. 2249

Date	7/6/22		
Run Number	TWO		
Depth Driller	3940		
Depth Logger	3940		
Bottom Logged Interval	3938		
Top Log Interval	3000		
Casing Driller	8 5/8" @ 220'		
Casing Logger	220		
Bit Size	7 7/8"		
Type Fluid in Hole	CHEMICAL MUD	CHLORIDES: 5,400 PPM	
Density / Viscosity	9.4/60		
pH / Fluid Loss	10.0/6.8		
Source of Sample	FLOWLINE		
Rm @ Meas. Temp	.800 @ 90F		
Rmf @ Meas. Temp	.600 @ 90F		
Rmc @ Meas. Temp	.960 @ 90F		
Source of Rmf / Rmc	MEASURED		
Rm @ BHT	.626 @ 115F		
Time Circulation Stopped	3.5 HOURS		
Time Logger on Bottom	8:30 P.M.		
Maximum Recorded Temperature	115F		
Equipment Number	8916		
Location	HAYS, KANSAS		
Recorded By	JEFF LUEBBERS		
Witnessed By	ED GLASSMAN		

<<< Fold Here >>>

All interpretations are opinions based on inferences from electrical or other measurements and we cannot and do not guarantee the accuracy or correctness of any interpretation, and we shall not, except in the case of gross or willful negligence on our part, be liable or responsible for any loss, costs, damages, or expenses incurred or sustained by anyone resulting from any interpretation made by any of our officers, agents or employees. These interpretations are also subject to our general terms and conditions set out in our current Price Schedule.

Comments

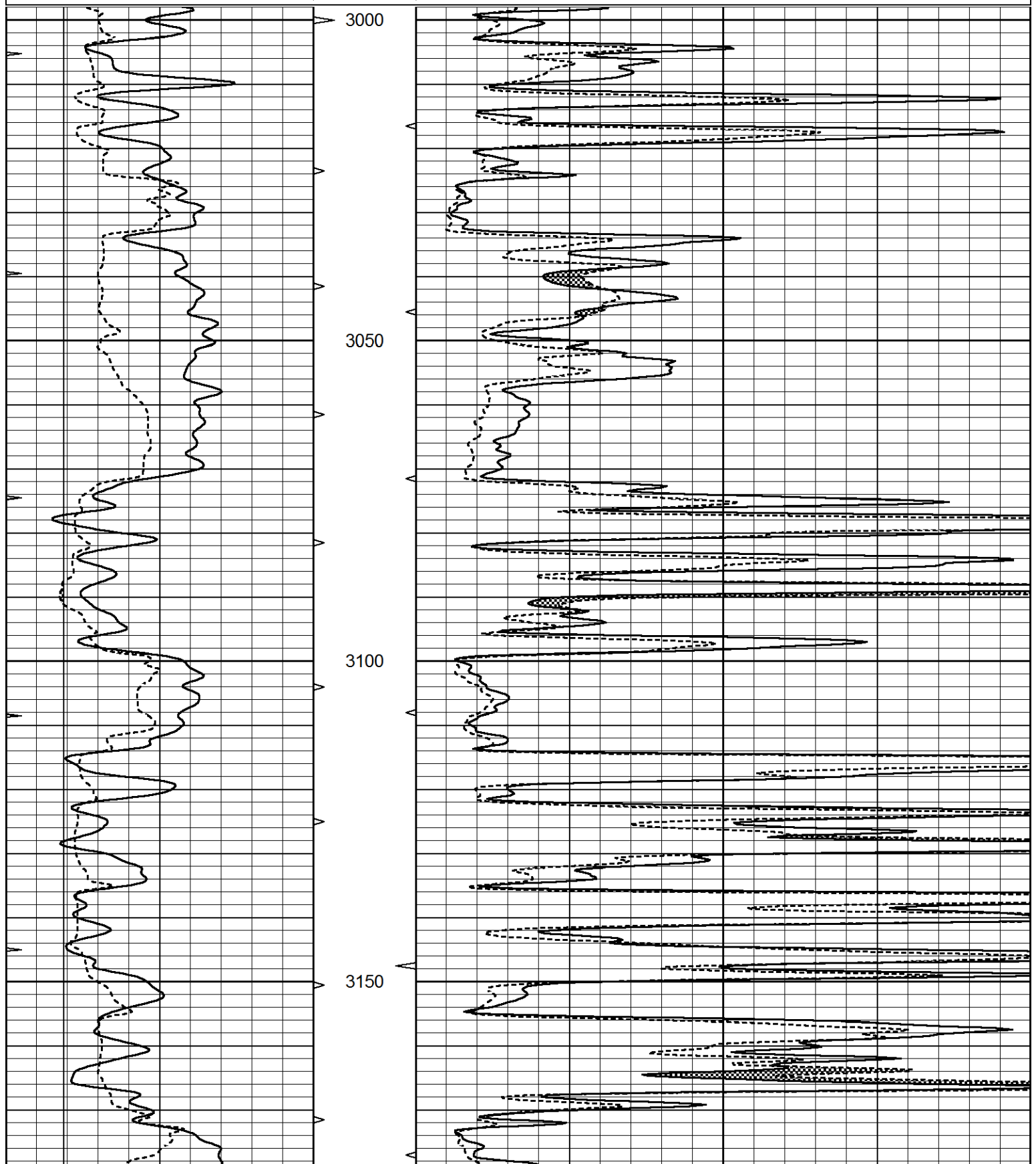
THANK YOU FOR USING ELI WIRELINE, HAYS, KS. (785) 628-6395
 DIRECTIONS:
 ELLIS, KS., 4S. ON BLKTOP TO "AIRBASE RD.", 1/2E., S. INTO

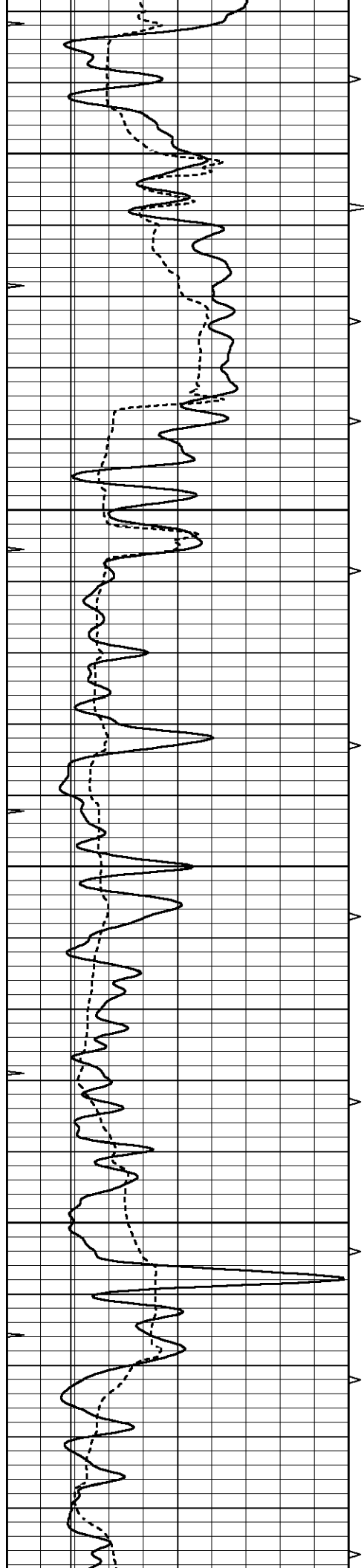


MAIN SECTION

Database File 6706pe.db
 Dataset Pathname pass6.5
 Presentation Format _micro
 Dataset Creation Wed Jul 06 21:51:31 2022
 Charted by Depth in Feet scaled 1:240

0	GAMMA RAY (GAPI)	150	ABHV	0	MEL1.5 (Ohm-m)	40
6	CALIPER (in)	16	10 (ft3)	0	MEL2.0 (Ohm-m)	40
0	MINMK	20	TBHV			
			0 (ft3)	10		



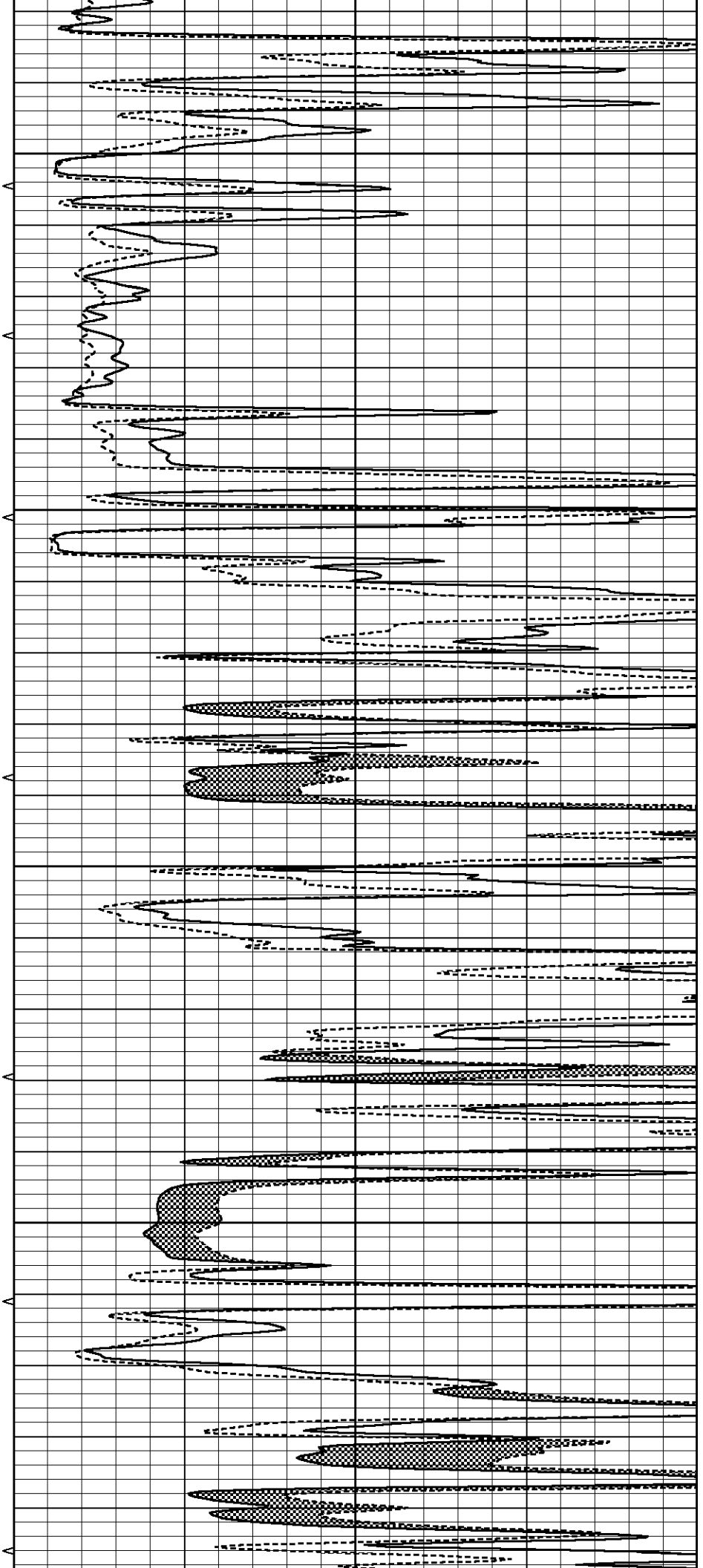


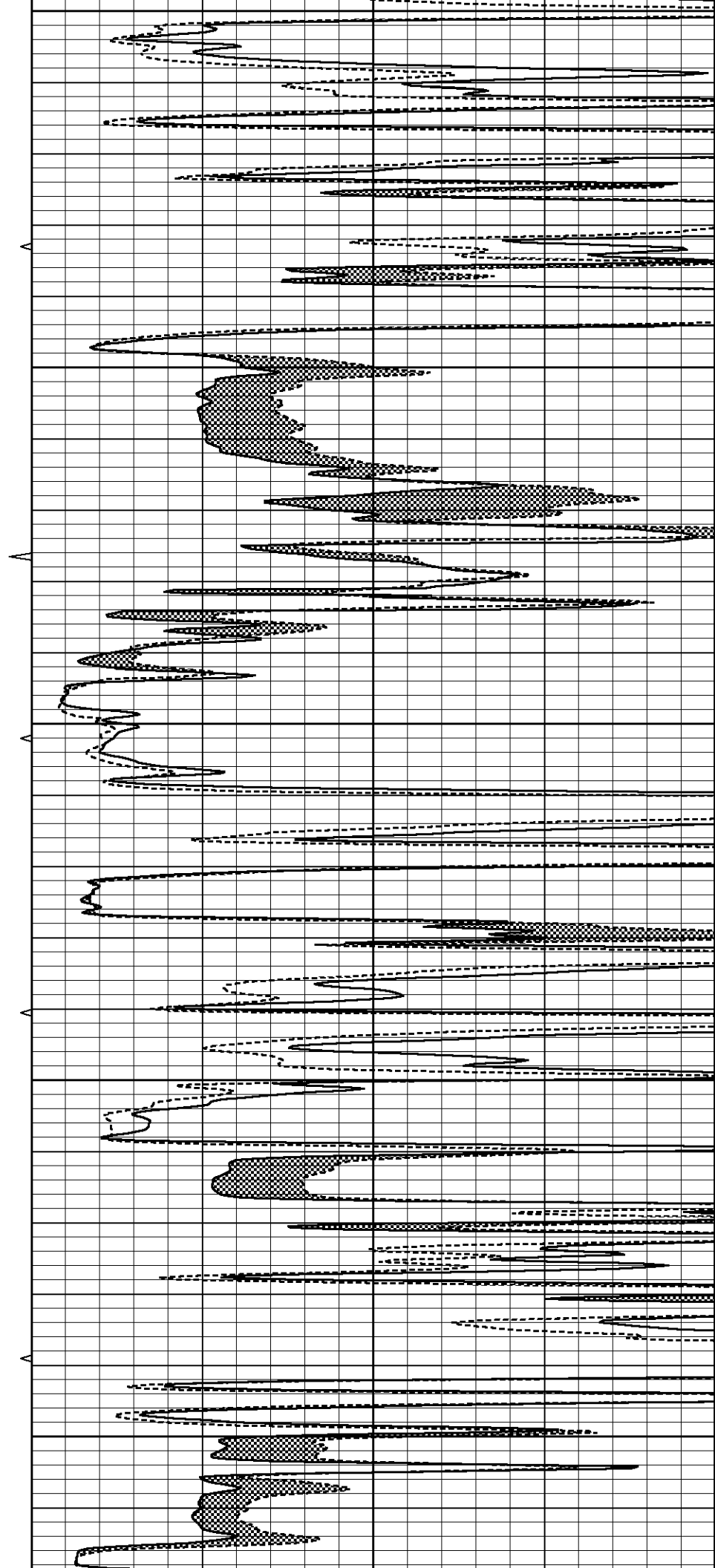
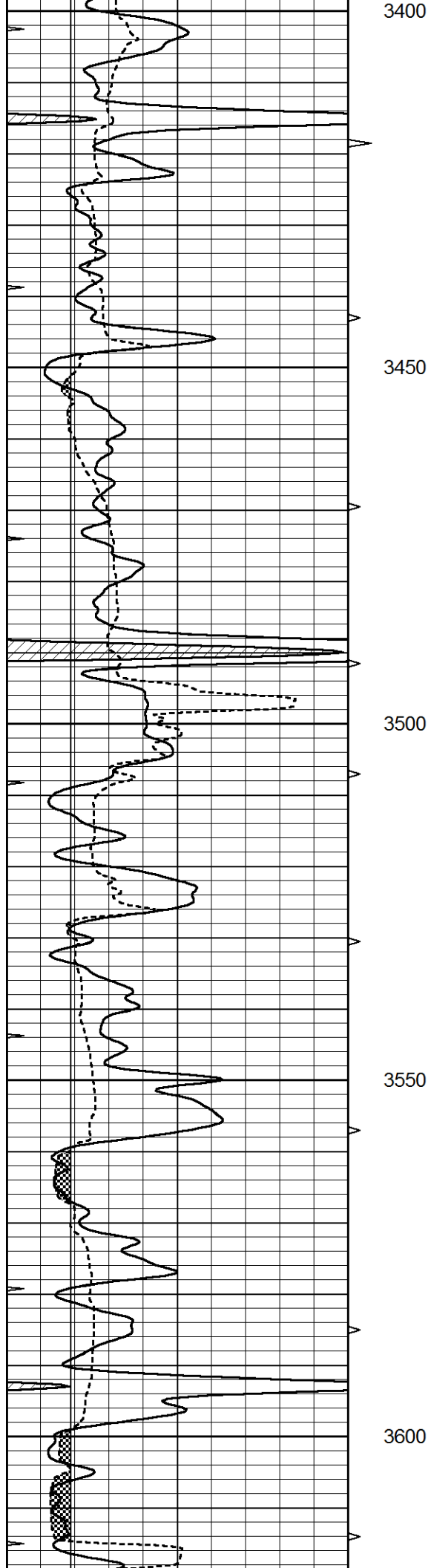
3200

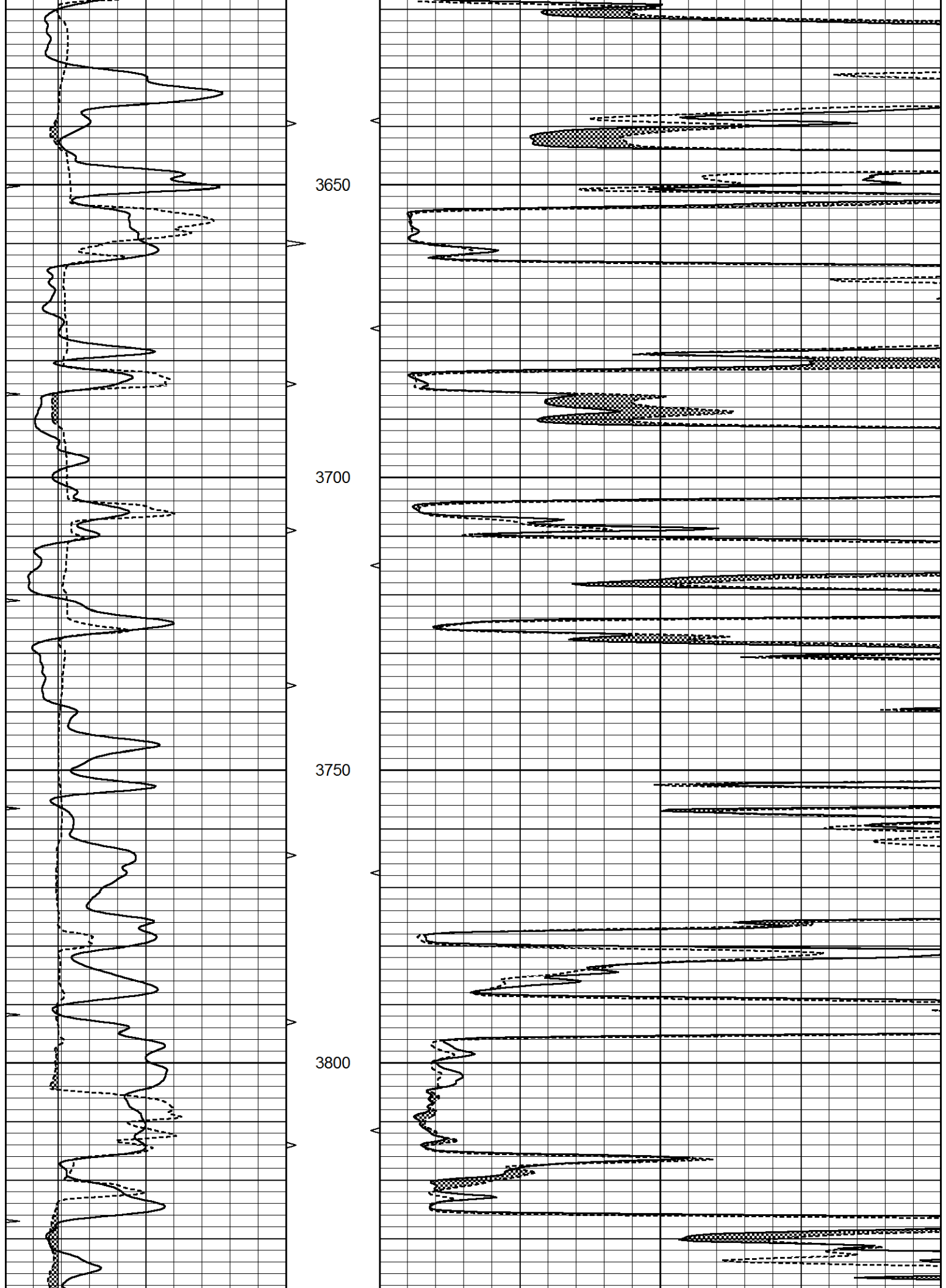
3250

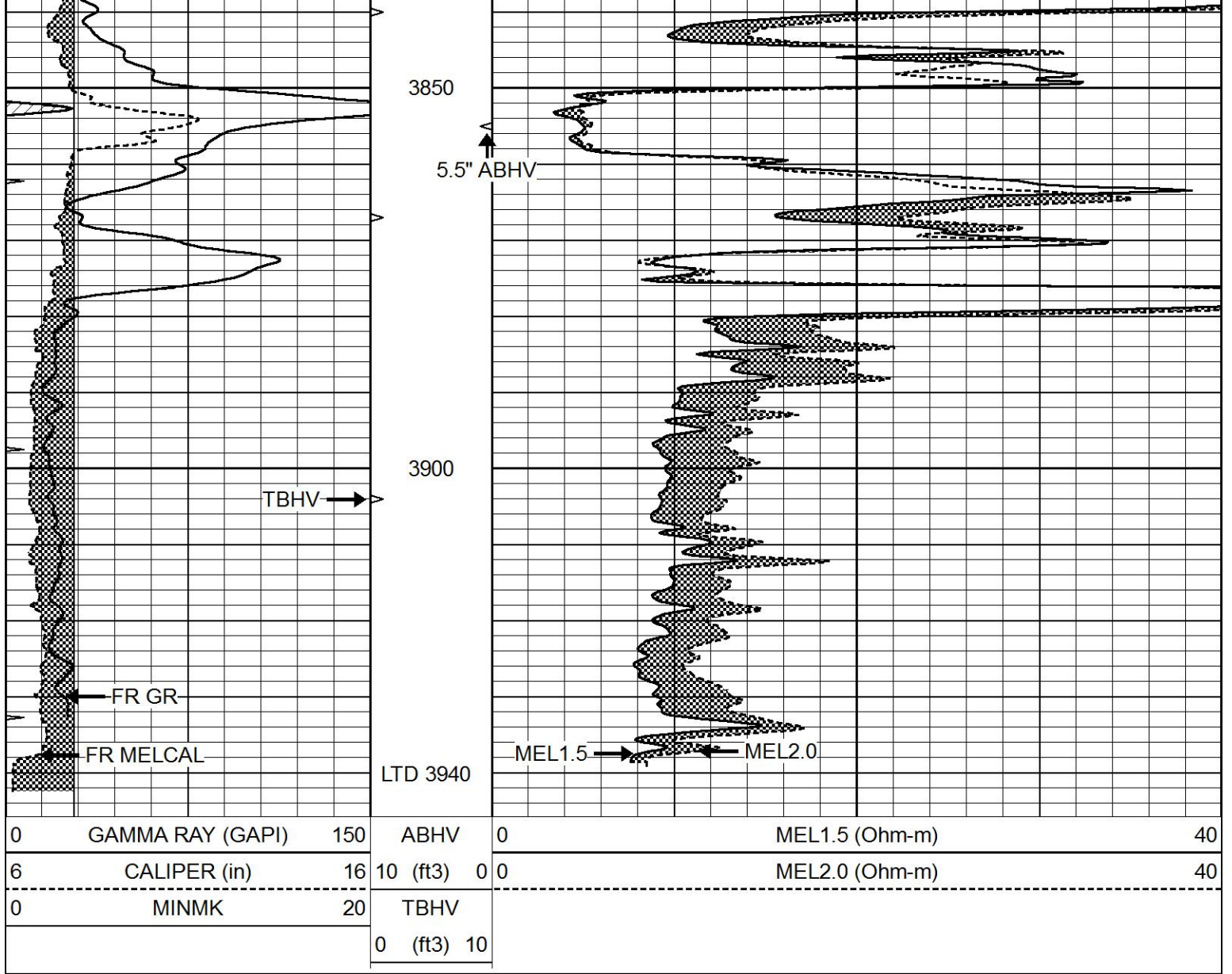
3300

3350





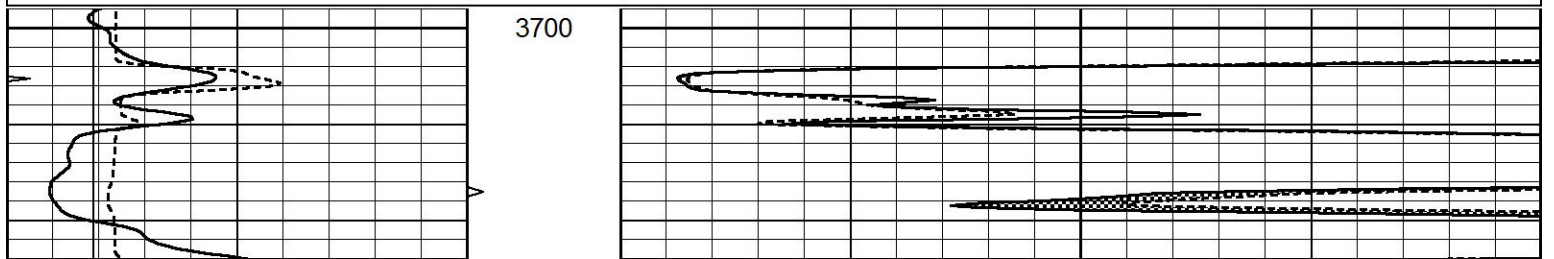


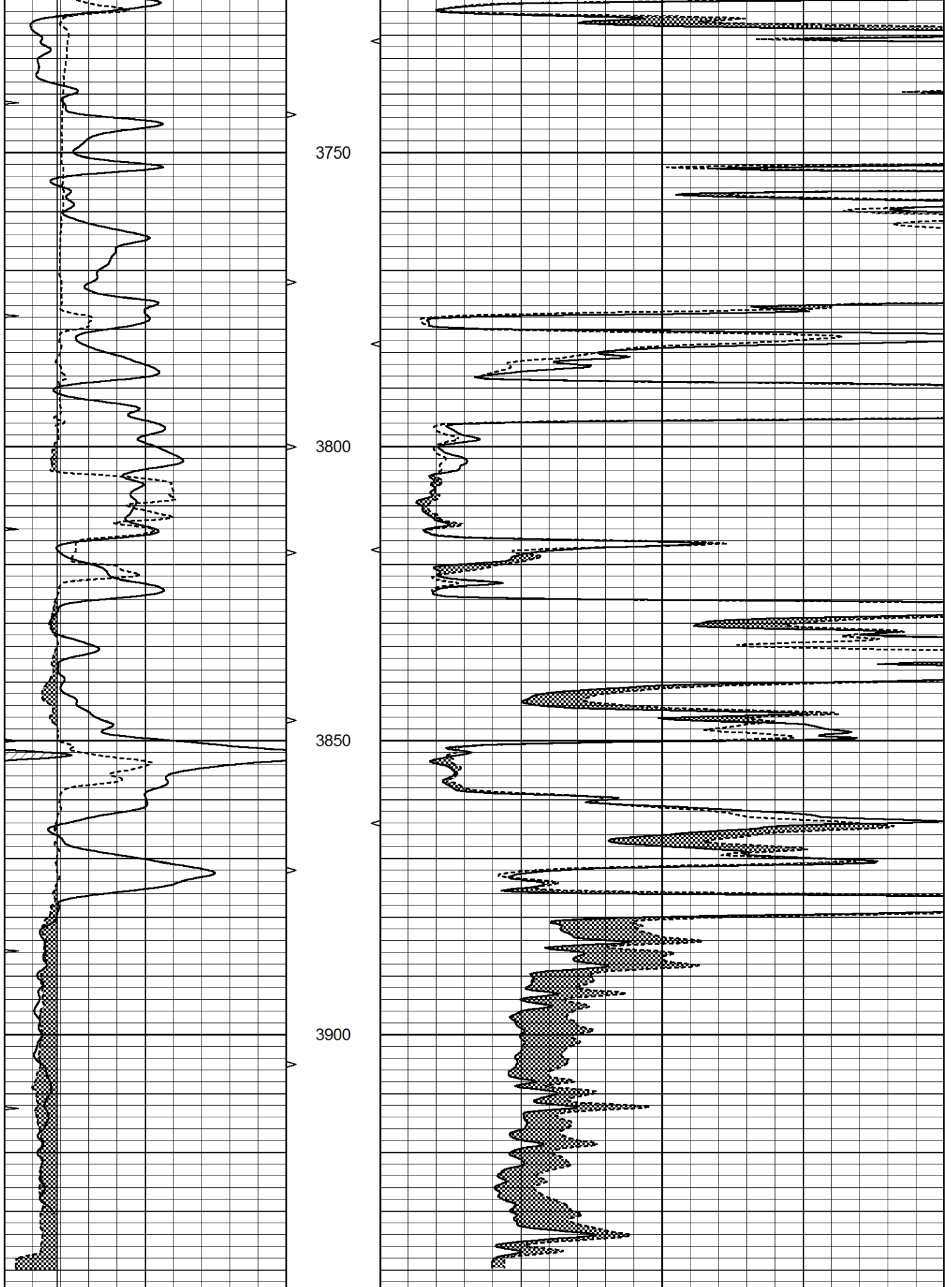


REPEAT SECTION

Database File 6706pe.db
 Dataset Pathname pass5.4
 Presentation Format _micro
 Dataset Creation Wed Jul 06 21:54:35 2022
 Charted by Depth in Feet scaled 1:240

0	GAMMA RAY (GAPI)	150	ABHV	0	MEL1.5 (Ohm-m)	40
6	CALIPER (in)	16	10 (ft3) 0	0	MEL2.0 (Ohm-m)	40
0	MINMK	20	TBHV			
			0 (ft3) 10			





0	GAMMA RAY (GAPI)	150	ABHV	0	MEL1.5 (Ohm-m)	40
6	CALIPER (in)	16	10 (ft3)	0	MEL2.0 (Ohm-m)	40
0	MINMK	20	TBHV			
			0 (ft3)	10		

Calibration Report

Database File 6706pe.db
Dataset Pathname pass6.5
Dataset Creation Wed Jul 06 21:51:31 2022

MICRO Calibration Report

Serial Number: MICRO6
Tool Model: PROBE
Performed: Wed Jul 06 21:29:21 2022

Caliper Calibration: Gain=4.706 Offset=1.882

	Low Cal	High Cal
References	8.000	16.000
Readings	1.300	3.000

1.5" Calibration: Gain=46.000 Offset=0.000

	Low Cal	High Cal
References	0.000	20.000
Readings	0.002	0.624

2" Calibration: Gain=58.000 Offset=-0.500

	Low Cal	High Cal
References	0.000	20.000
Readings	0.006	0.468

Gamma Ray Calibration Report

Serial Number: GR5
Tool Model: OPEN
Performed: Sun Jul 03 15:33:05 2022

Calibrator Value: 1.0 GAPI

Background Reading: 0.0 cps
Calibrator Reading: 1.0 cps

Sensitivity: 0.5600 GAPI/cps