



**MICRO  
LOG**

Company DOWNING-NELSON OIL COMPANY, INC.  
 Well VELMA "B" #2-14  
 Field COTTON EAST  
 County TREGO  
 State KANSAS

Company DOWNING-NELSON OIL COMPANY, INC.  
 Well VELMA "B" #2-14  
 Field COTTON EAST  
 County TREGO State KANSAS

Location: API #: 15-195-23149-0000  
 2000' FSL & 480' FEL  
 SW - NE - NE - SE  
 SEC 14 TWP 12S RGE 21W  
 Permanent Datum GROUND LEVEL Elevation 2302  
 Log Measured From KELLY BUSHING 8' A.G.L  
 Drilling Measured From KELLY BUSHING  
 Other Services  
 CDL/CNL  
 DIL  
 Elevation  
 K.B. 2310  
 D.F. 2308  
 G.L. 2302

Date	10/14/22		
Run Number	TWO		
Depth Driller	4085		
Depth Logger	4085		
Bottom Logged Interval	4083		
Top Log Interval	3250		
Casing Driller	8 5/8" @ 221		
Casing Logger	221		
Bit Size	7 7/8		
Type Fluid in Hole	CHEMICAL MUD	CHLORIDES 5.000 PPM	
Density / Viscosity	9.2/56		
pH / Fluid Loss	10.5/8.8		
Source of Sample	FLOWLINE		
Rm @ Meas. Temp	1.10 @ 80F		
Rmt @ Meas. Temp	.825 @ 80F		
Rmc @ Meas. Temp	1.32 @ 80F		
Source of Rmf / Rmc	MEASUREMENT		
Rm @ BHT	.752 @ 117F		
Time Circulation Stopped	4 HOURS		
Time Logger on Bottom	9:30 A.M.		
Maximum Recorded Temperature	117F		
Equipment Number	3802		
Location	HAYS, KANSAS		
Recorded By	COLE ROBBEN		
Witnessed By	MARC DOWNING		

<<< Fold Here >>>

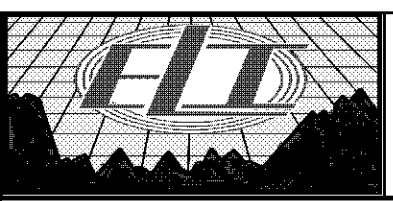
All interpretations are opinions based on inferences from electrical or other measurements and we cannot and do not guarantee the accuracy or correctness of any interpretation, and we shall not, except in the case of gross or willful negligence on our part, be liable or responsible for any loss, costs, damages, or expenses incurred or sustained by anyone resulting from any interpretation made by any of our officers, agents or employees. These interpretations are also subject to our general terms and conditions set out in our current Price Schedule.

**Comments**

THANK YOU FOR USING ELI WIRELINE SERVICES, HAYS, KS. ( 785 ) 628-6395

**DIRECTIONS:**

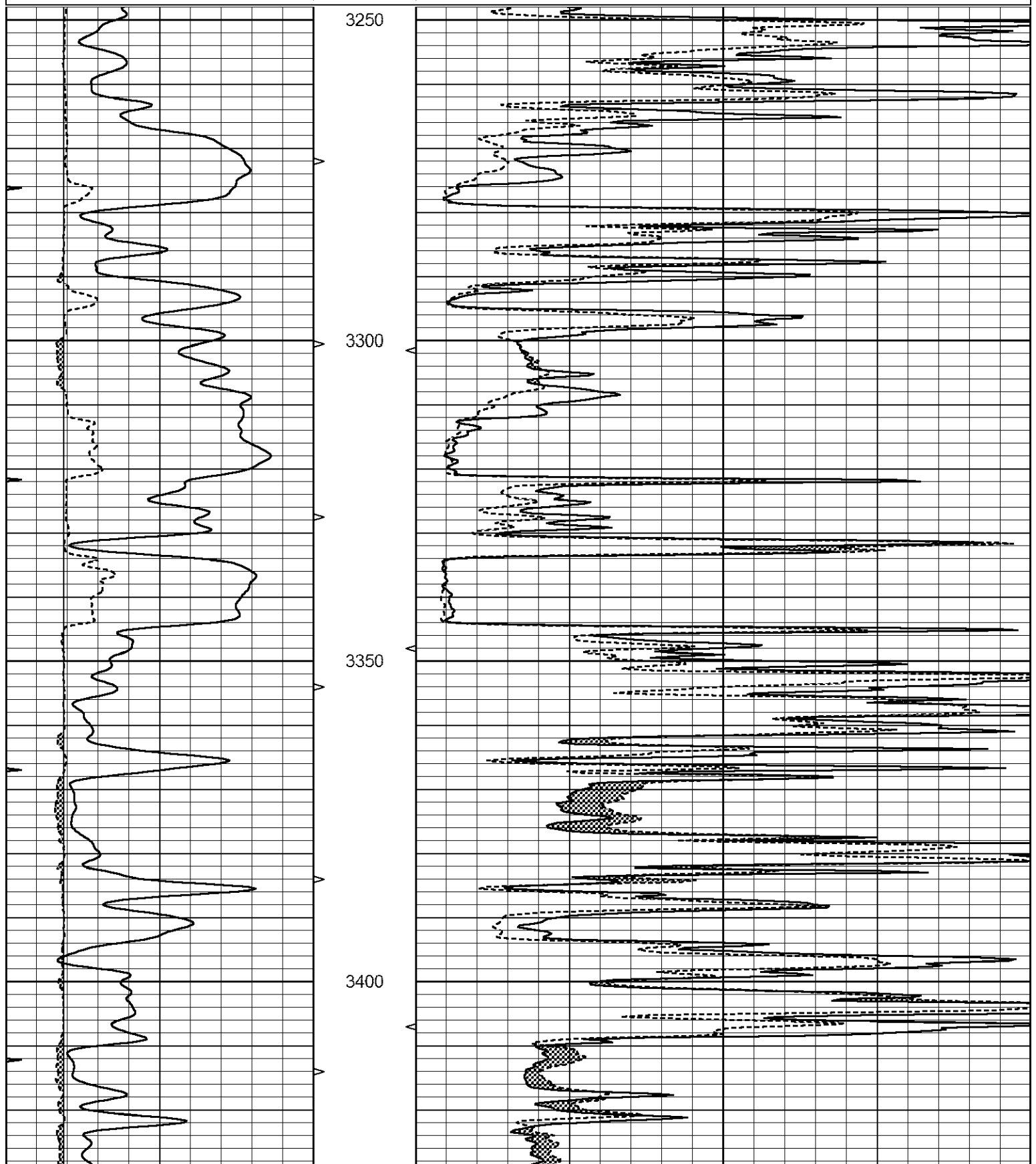
NORTH OF ELLIS, KANSAS TO CURVE, WEST AT CURVE TO 400 AVENUE, NORTH 1.5 MILES,  
 WEST INTO

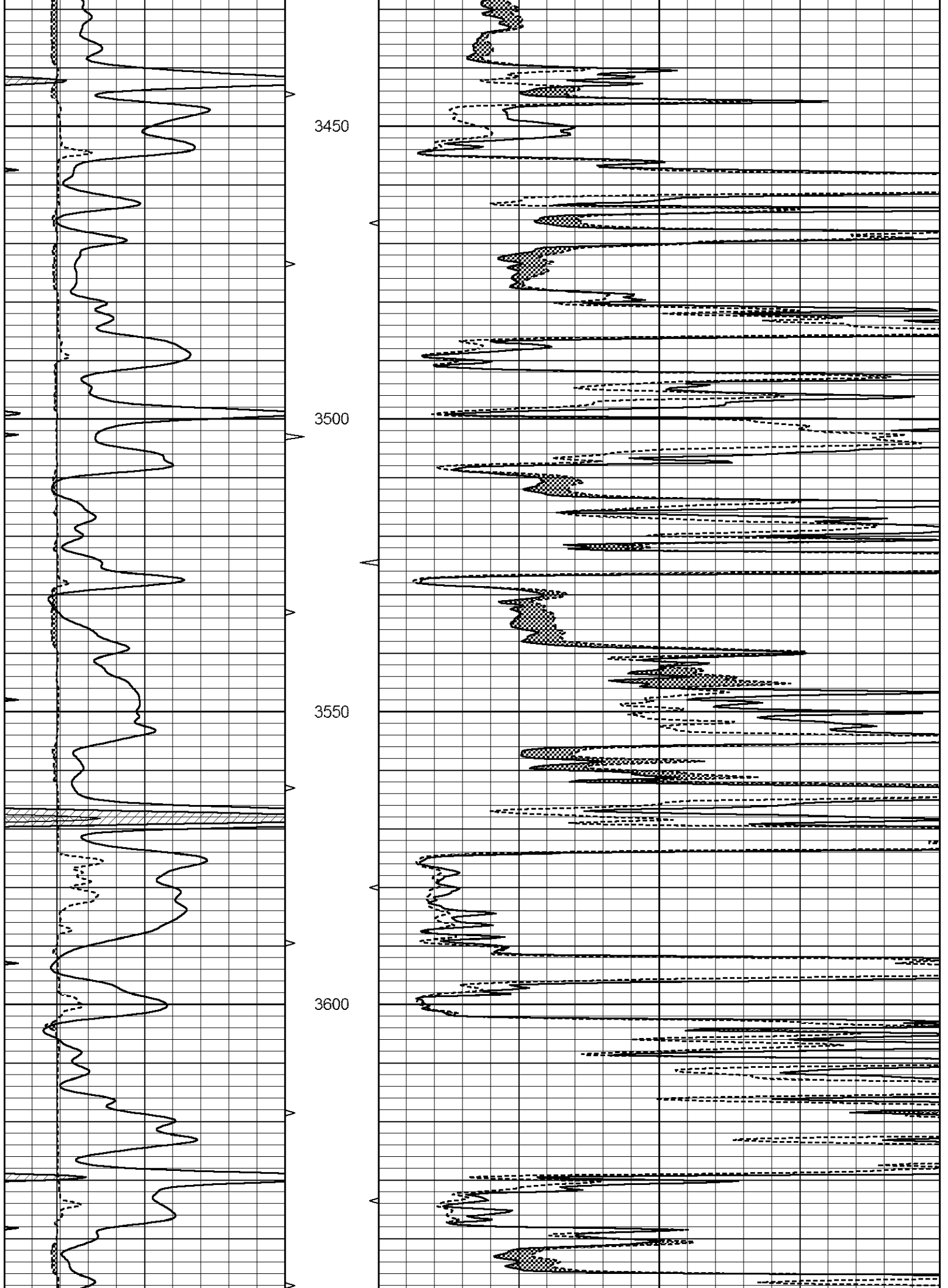


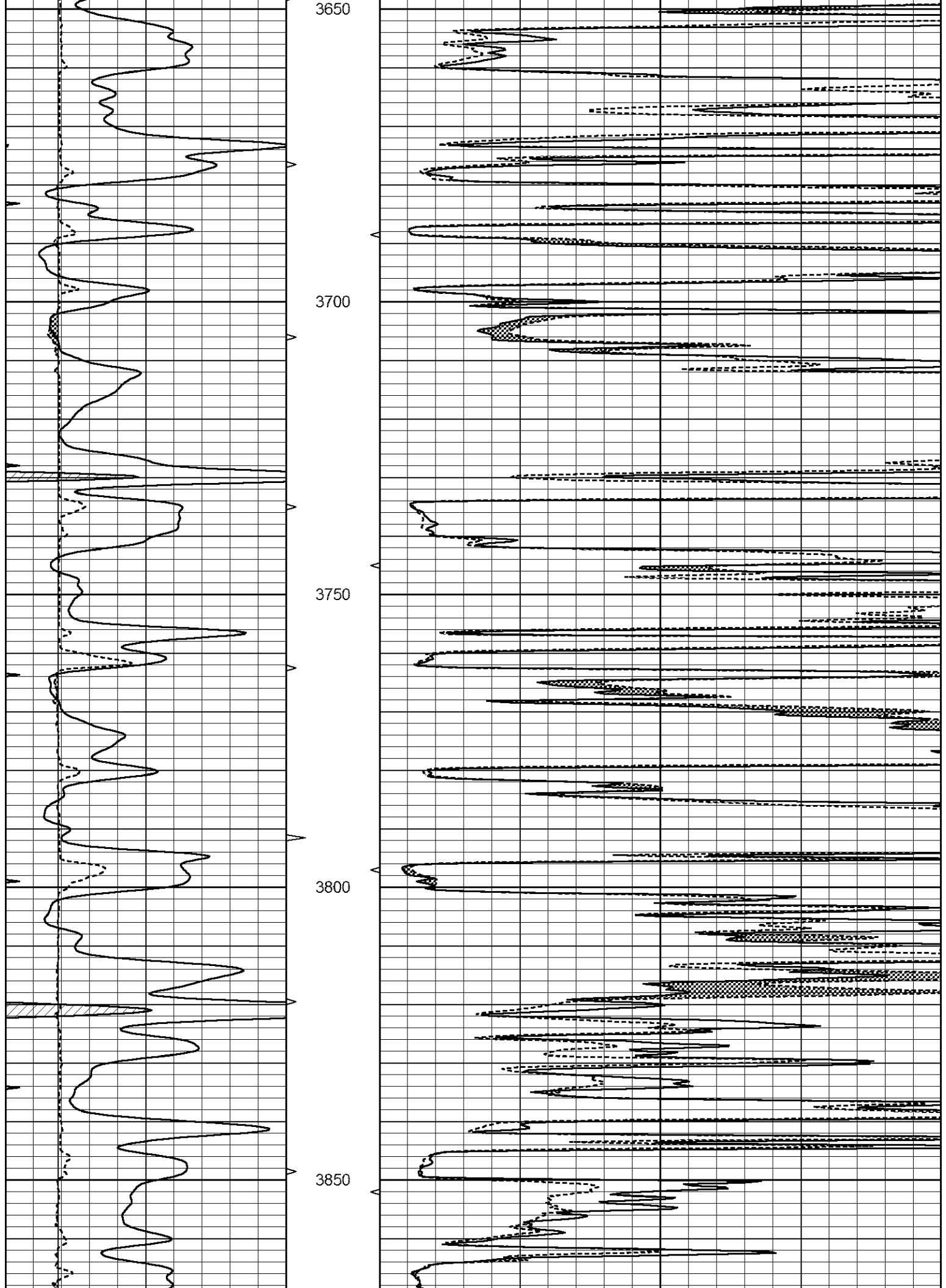
**MAIN SECTION**

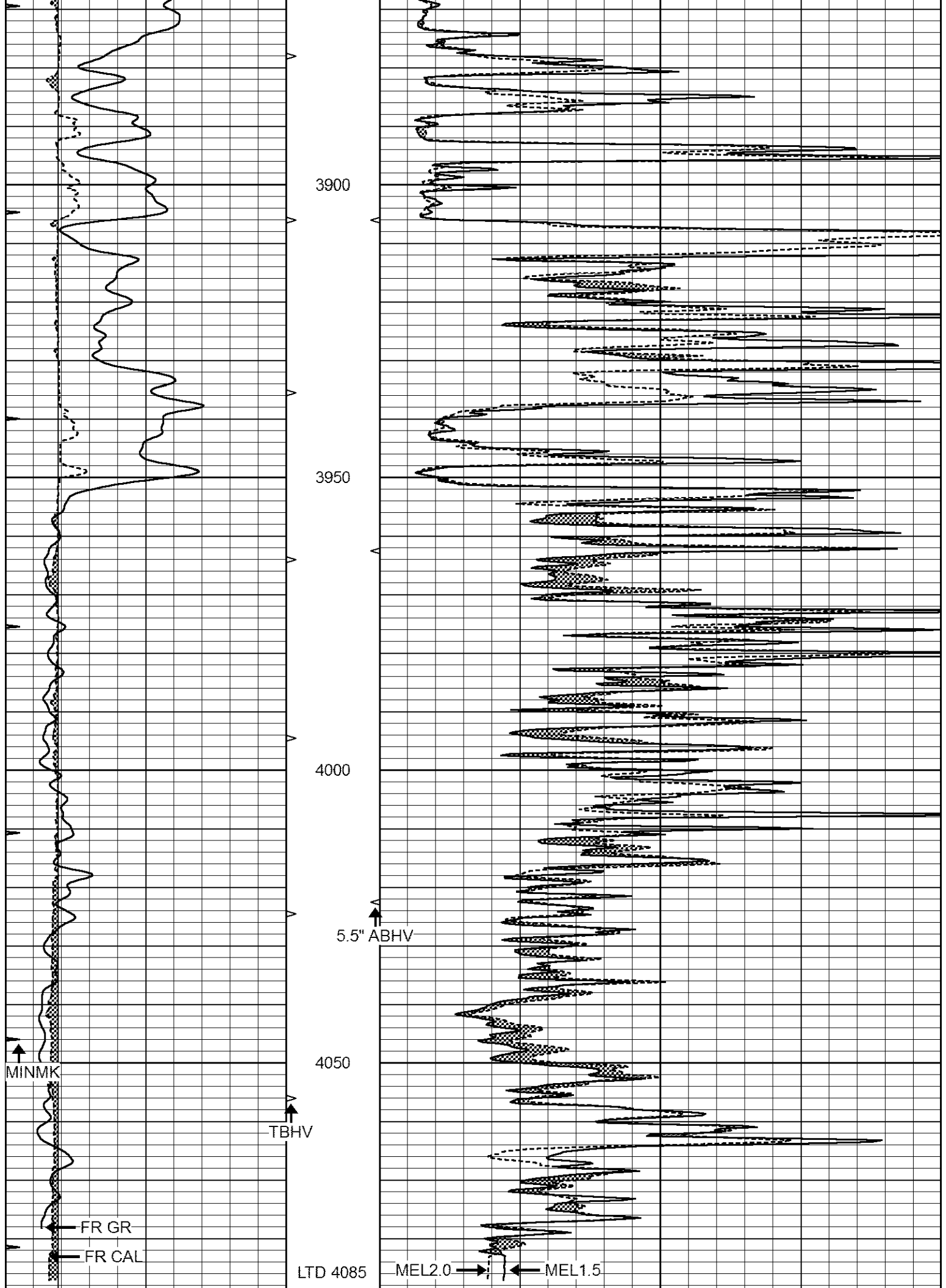
Database File 7233ddn.db  
 Dataset Pathname pass9M  
 Presentation Format \_micro  
 Dataset Creation Fri Oct 14 09:58:04 2022  
 Charted by Depth in Feet scaled 1:240

0	GAMMA RAY (GAPI)	150	ABHV	0	MEL1.5 (Ohm-m)	40
6	CALIPER (in)	16	10 (ft3)	0	MEL2.0 (Ohm-m)	40
0	MINMK	20	TBHV			
			0 (ft3)	10		

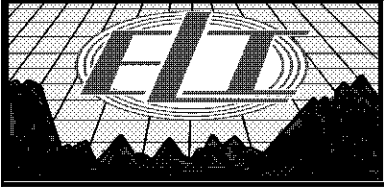








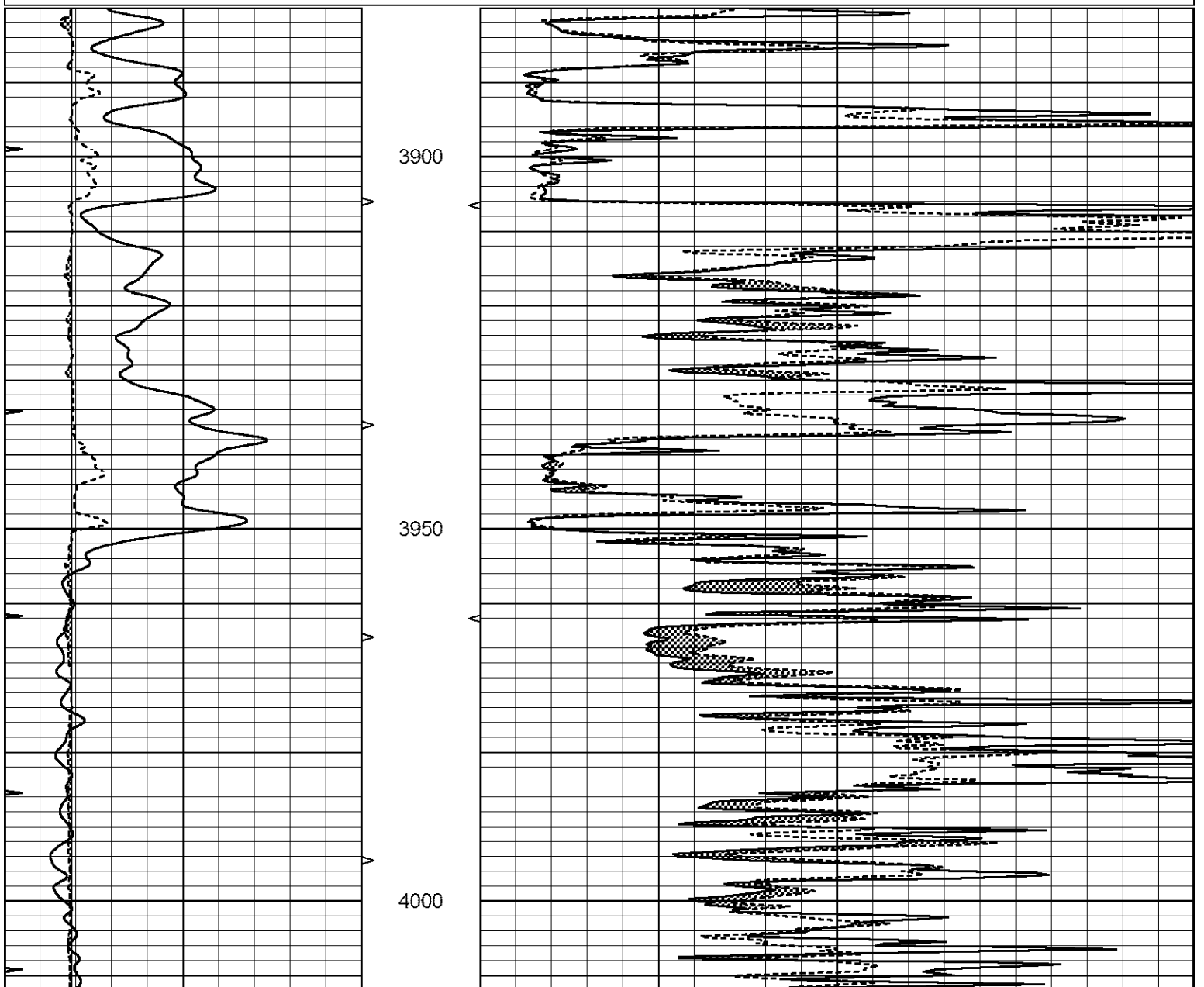
0	GAMMA RAY (GAPI)	150	ABHV	0	MEL1.5 (Ohm-m)	40
6	CALIPER (in)	16	10 (ft3)	0 0	MEL2.0 (Ohm-m)	40
0	MINMK	20	TBHV			
			0 (ft3)	10		

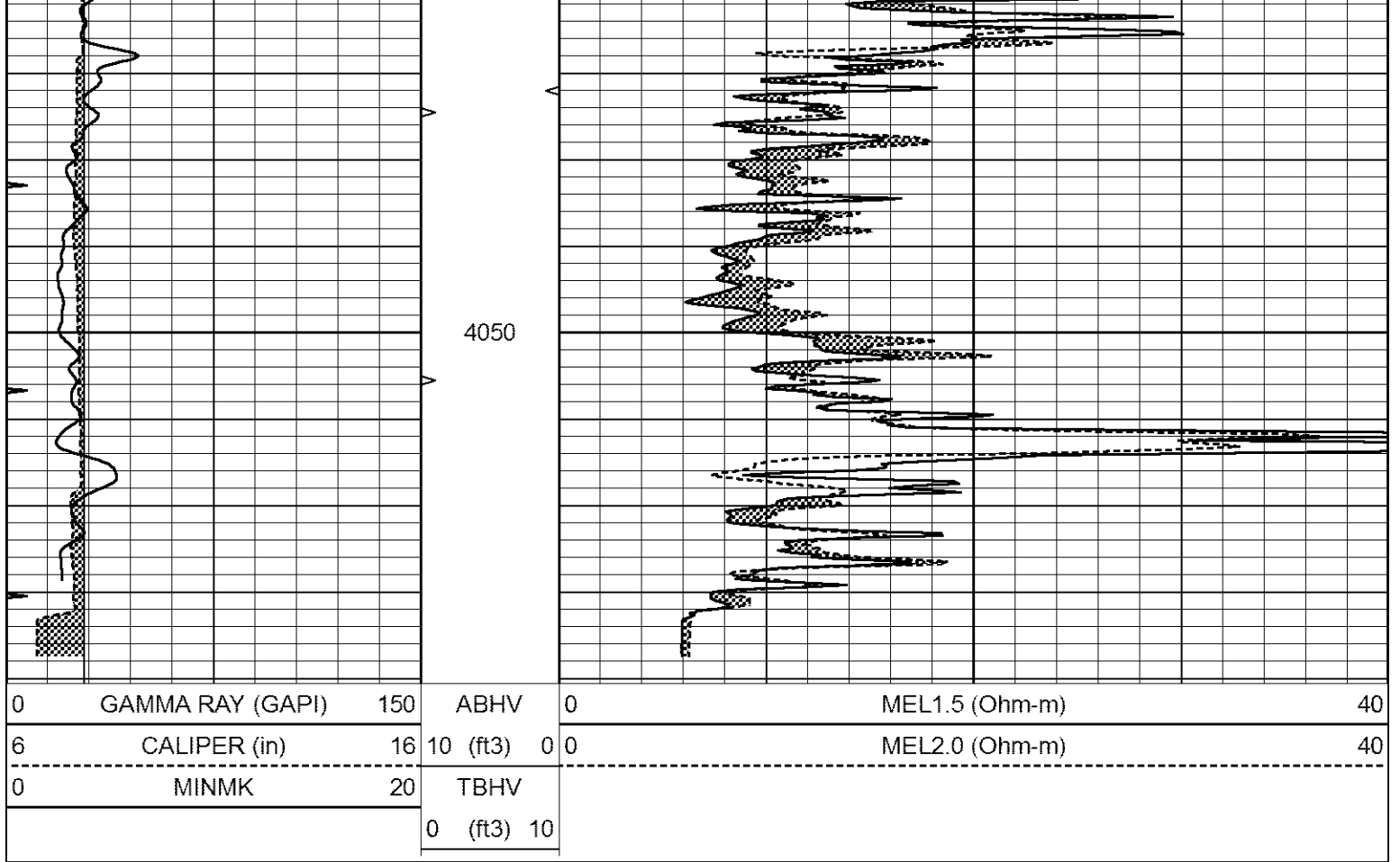


# REPEAT SECTION

Database File 7233ddn.db  
 Dataset Pathname pass8R  
 Presentation Format \_micro  
 Dataset Creation Fri Oct 14 09:50:32 2022  
 Charted by Depth in Feet scaled 1:240

0	GAMMA RAY (GAPI)	150	ABHV	0	MEL1.5 (Ohm-m)	40
6	CALIPER (in)	16	10 (ft3)	0 0	MEL2.0 (Ohm-m)	40
0	MINMK	20	TBHV			
			0 (ft3)	10		





**Calibration Report**

Database File      7233ddn.db  
 Dataset Pathname    pass9M  
 Dataset Creation    Fri Oct 14 09:58:04 2022

**MICRO\_USR Calibration Report**

Serial Number:	070910	
Tool Model:	ProbeL	
Performed:	Fri Oct 14 09:27:21 2022	
Caliper Calibration:	Gain=7.212	Offset=1.800
References	Low Cal 8.000	High Cal 14.000
Readings	0.725	1.557
1.5" Calibration:	Gain=38.000	Offset=0.000
References	Low Cal 0.000	High Cal 20.000
Readings	0.004	1.335
2" Calibration:	Gain=45.000	Offset=0.000
References	Low Cal 0.000	High Cal 20.000
Readings	0.004	1.029

**Microlog Calibration Report**

Serial-Model:                      070910-ProbeL  
 Performed:                        (Not Performed)

Readings	References	Results
----------	------------	---------

