



**SONIC  
LOG**

Company Scout Energy Partners  
Well Mueller #1-6 ATU-353X  
Field Hugoton-Panoma  
County Stevens  
State KS

Company Scout Energy Partners  
Well Mueller #1-6 ATU-353X  
Field Hugoton-Panoma  
County Stevens State KS

Location: API #: 15-189-22869  
SE/SE/SE/SE  
222' FSL & 247' FEL  
Permanent Datum Ground Level Elevation 3029'  
Log Measured From KB 5' AGL  
Drilling Measured From KB  
Other Services  
LITHO  
DIL  
Elevation  
K.B. 3034'  
D.F. 3033'  
G.L. 3029'

Date	9/4/22
Run Number	TWO
Depth Driller	3273'
Depth Logger	3270'
Bottom Logged Interval	3261'
Top Log Interval	Surface
Casing Driller	8 5/8" @ 676'
Casing Logger	676'
Bit Size	7 7/8"
Type Fluid in Hole	Chemical
Density / Viscosity	8.8/44
pH / Fluid Loss	9.5/8.4
Source of Sample	Pit
Rm @ Meas. Temp	1.85@70degf
Rmf @ Meas. Temp	1.39@70degf
Rmc @ Meas. Temp	2.22@70degf
Source of Rmf / Rmc	Calculated
Rm @ BHT	1.33@97degf
Time Circulation Stopped	11:00 P.M.
Time Logger on Bottom	5:00 A.M.
Maximum Recorded Temperature	97degf
Equipment Number	T605
Location	Hays, KS
Recorded By	Casey Patterson
Witnessed By	Jordan Noret
	Omar Peinado

<<< Fold Here >>>

All interpretations are opinions based on inferences from electrical or other measurements and we cannot and do not guarantee the accuracy or correctness of any interpretation, and we shall not, except in the case of gross or willful negligence on our part, be liable or responsible for any loss, costs, damages, or expenses incurred or sustained by anyone resulting from any interpretation made by any of our officers, agents or employees. These interpretations are also subject to our general terms and conditions set out in our current Price Schedule.

**Comments**

Hugoton,KS Hwy 51 East 8 mi to Rd20 .,  
250 feet North on Rd 20, West Into Location

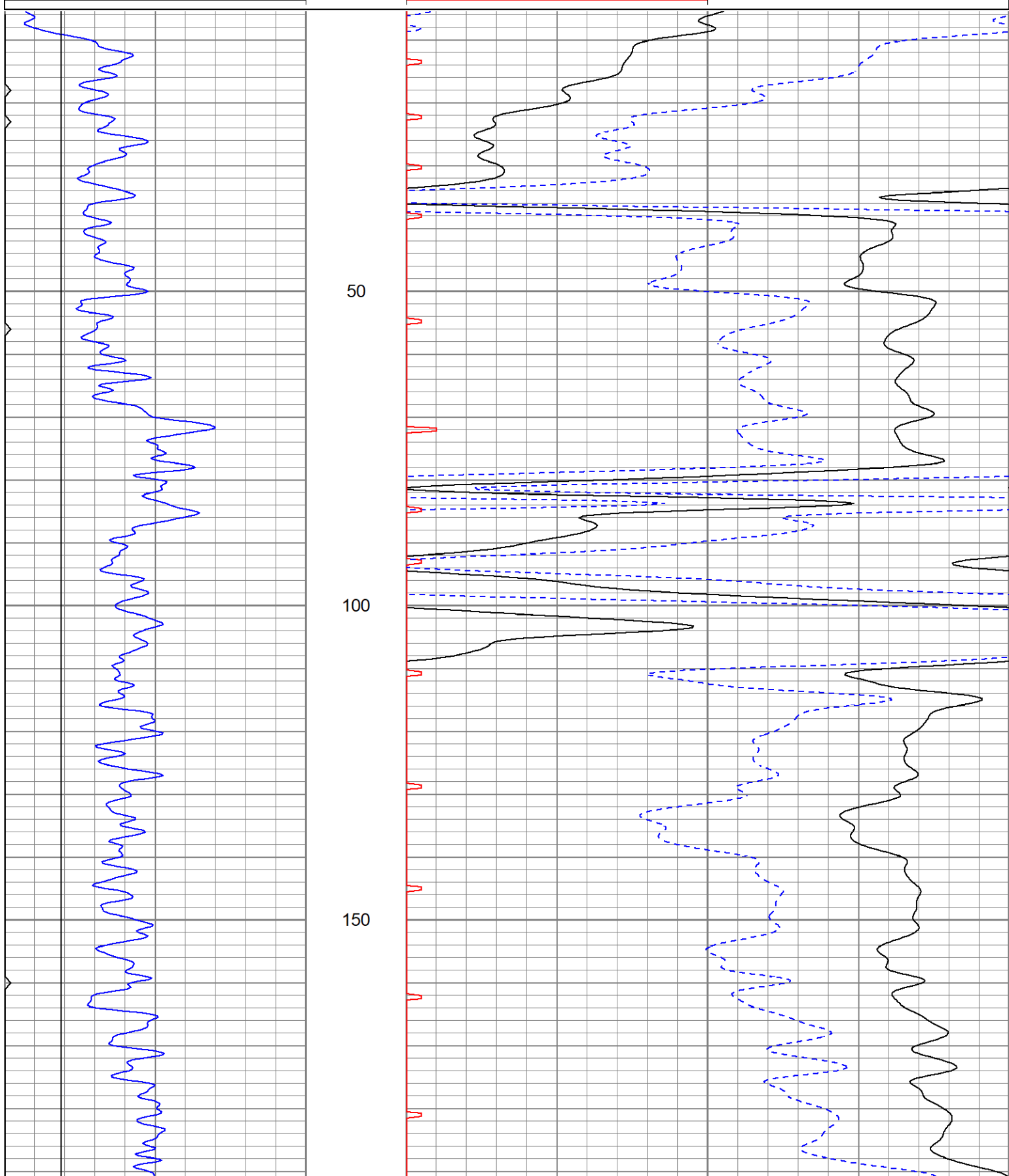
Thank You for using Gemini Wireline LLC  
785-625-1182

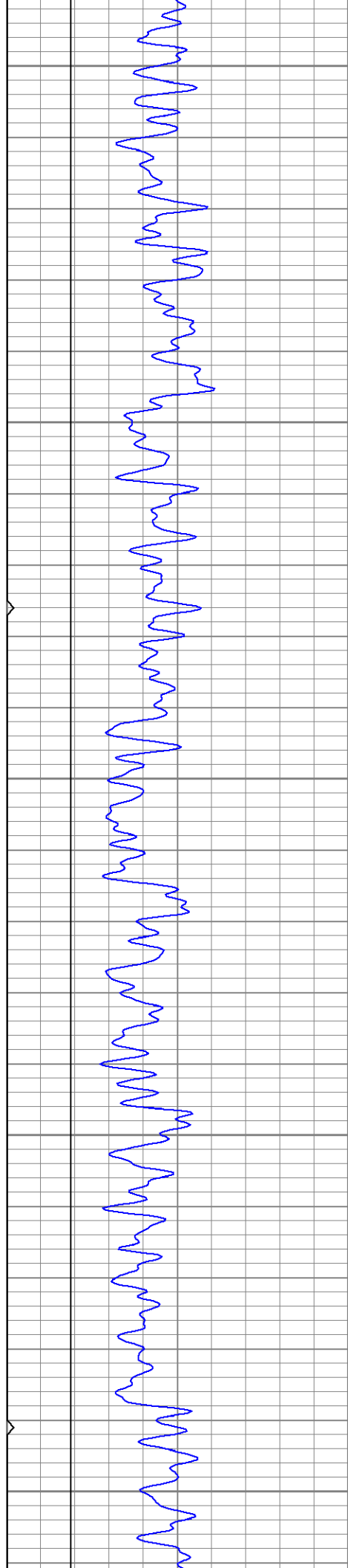


**MAIN PASS**

Database File semueller#1-6-atu-353xoh.db  
 Dataset Pathname pass4  
 Presentation Format kbc  
 Dataset Creation Sun Sep 04 05:10:23 2022  
 Charted by Depth in Feet scaled 1:240

0	GR (GAPI)	150	140	DT (usec/ft)	40
6	BOREID (in)	16	30	SPOR (pu)	-10
0	MINMK	50	0	ITT (msec)	20





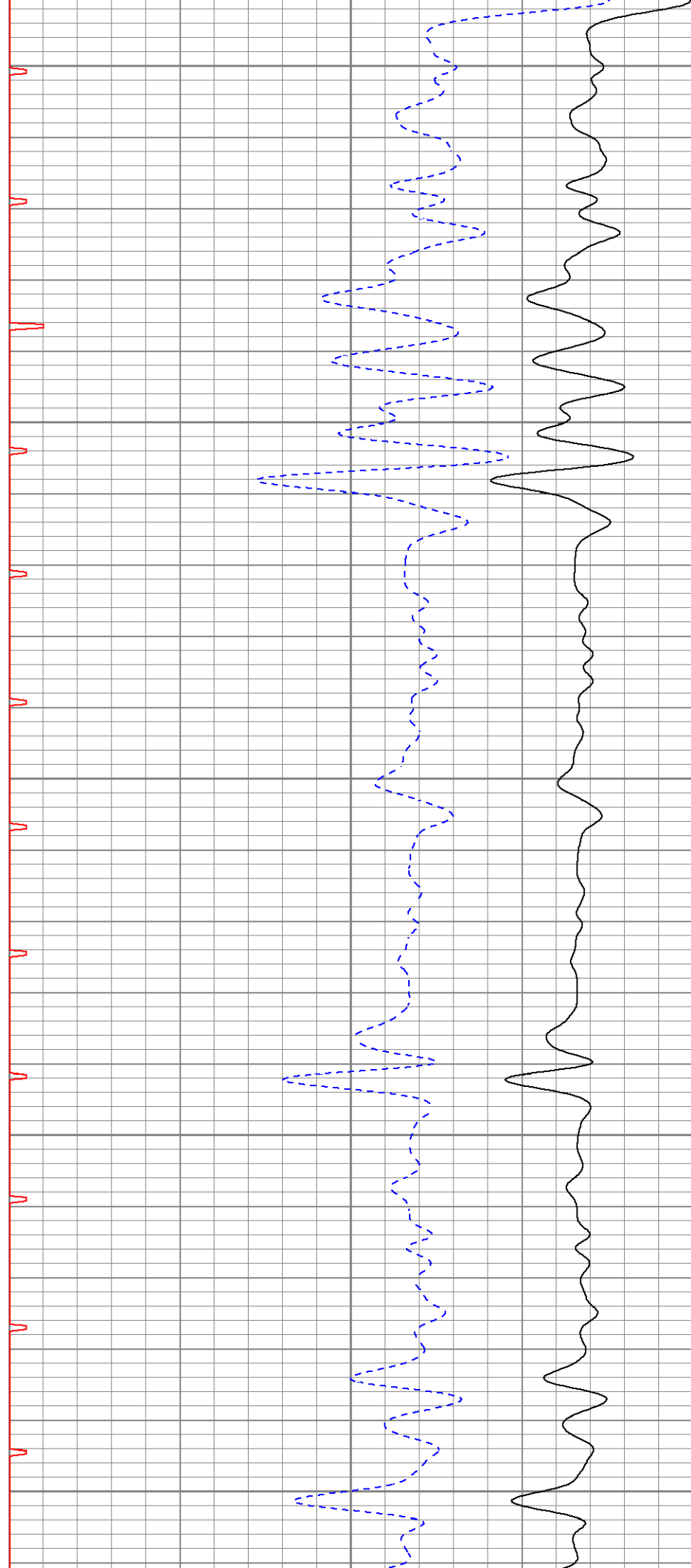
200

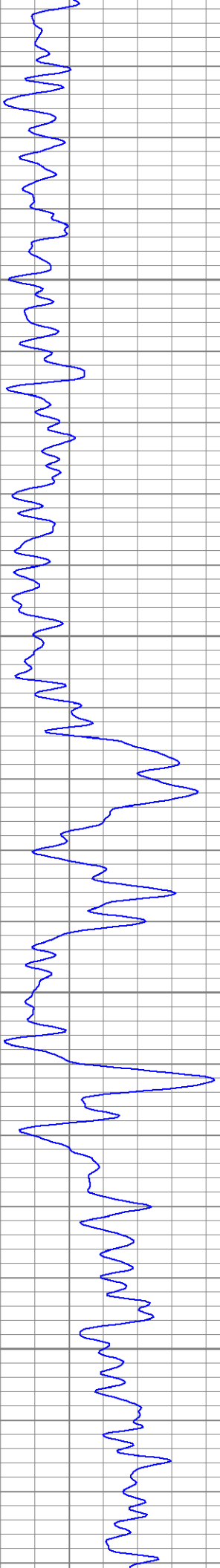
250

300

350

400



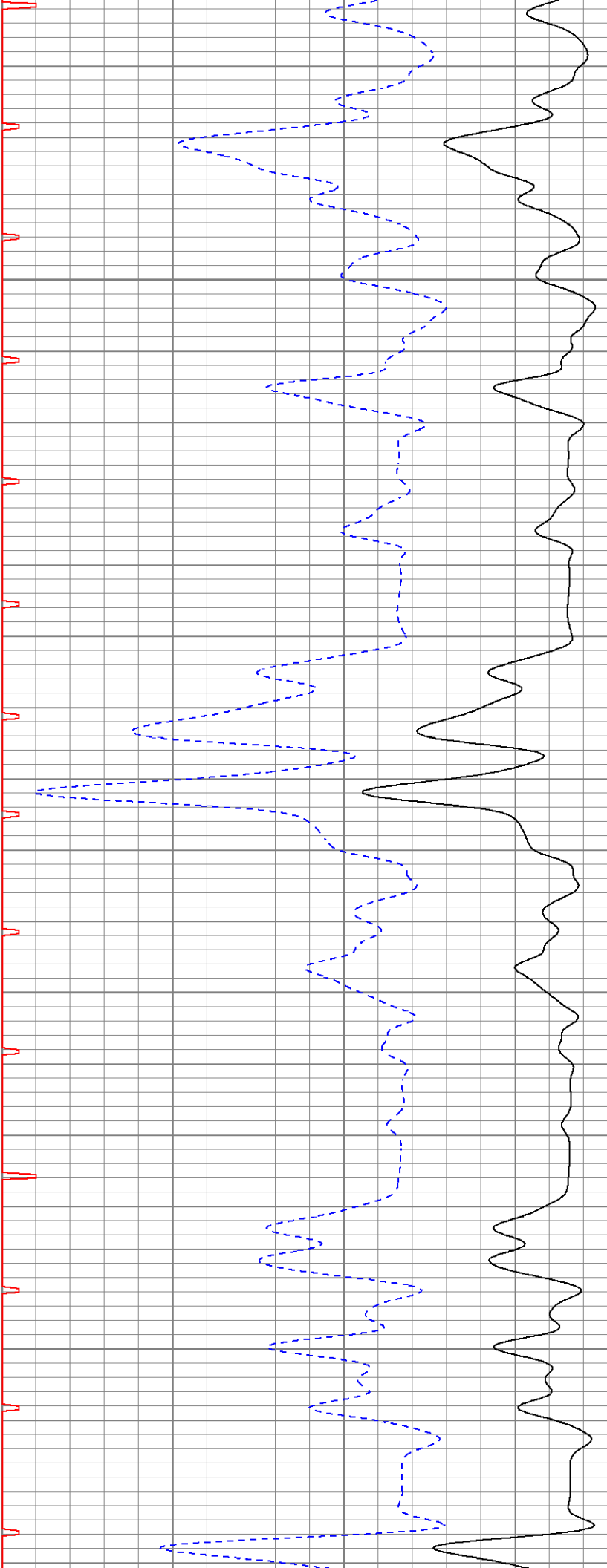


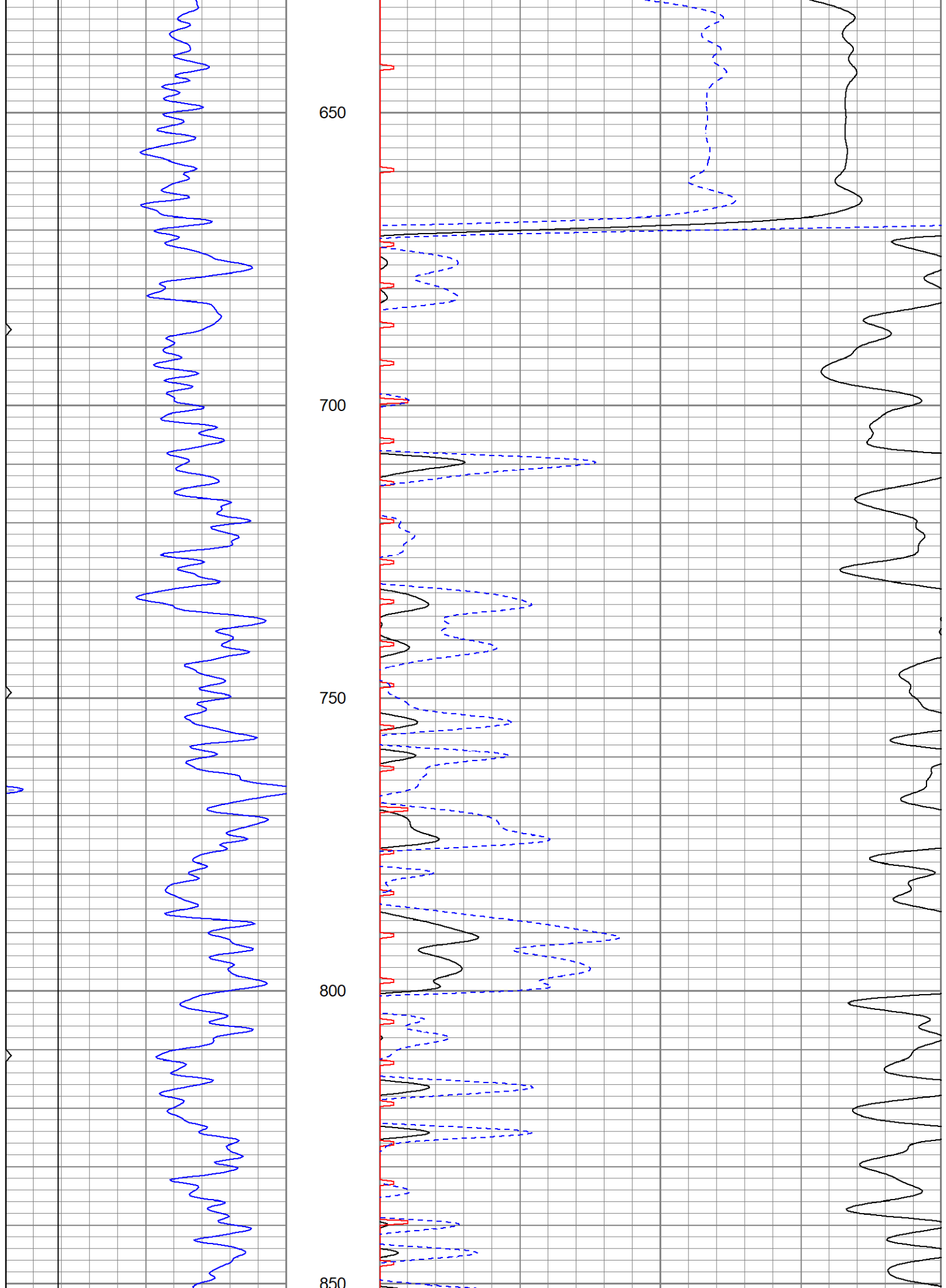
450

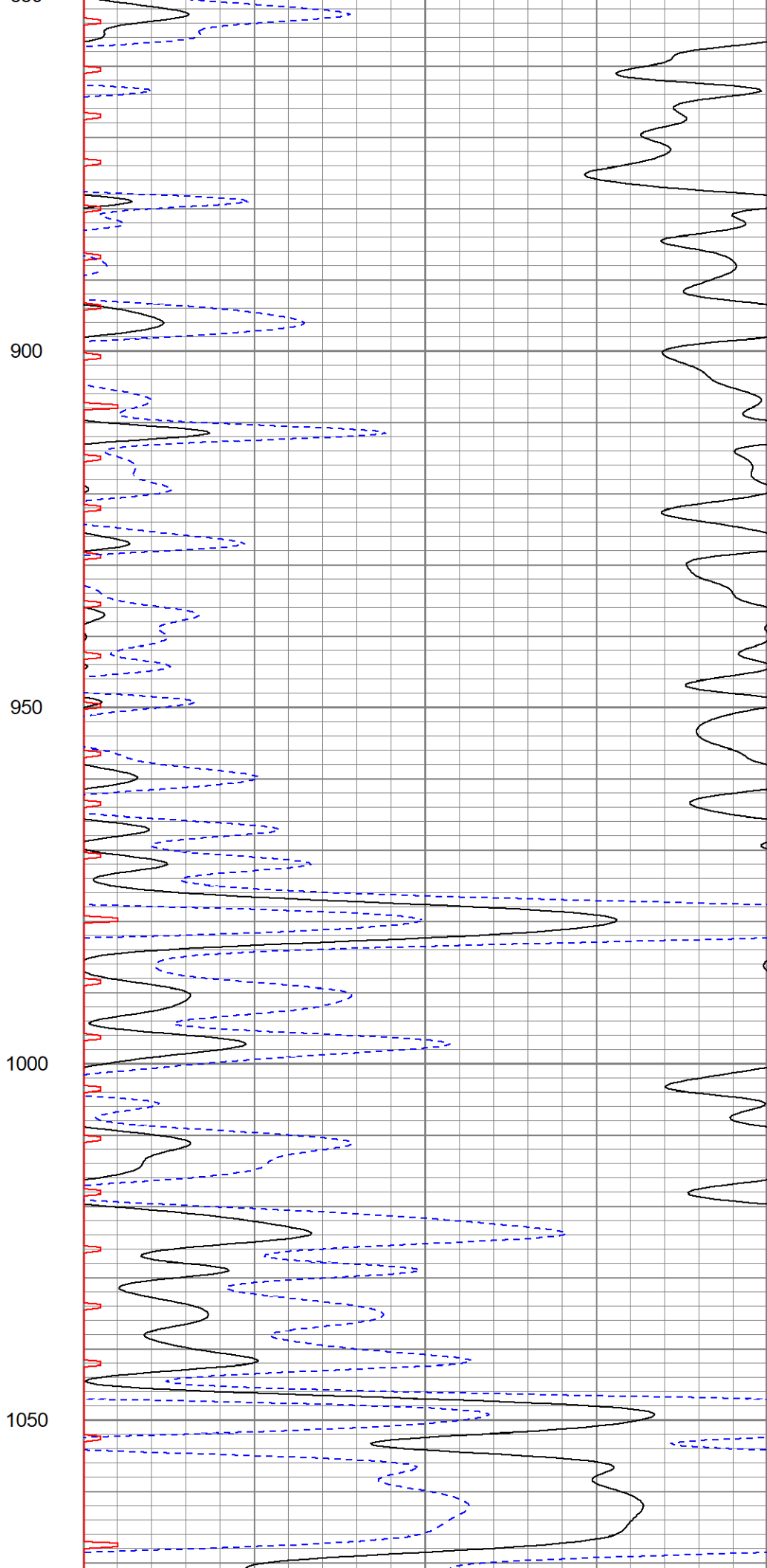
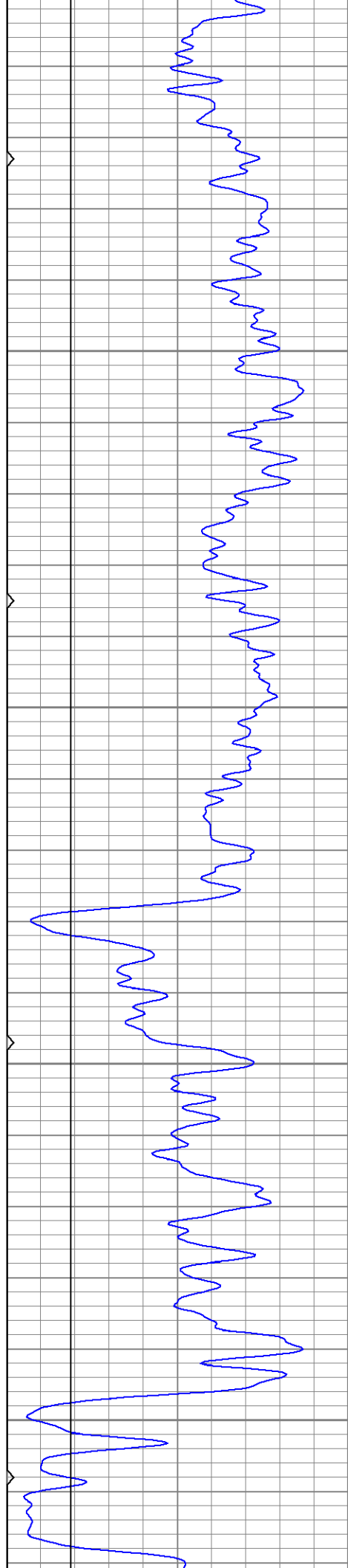
500

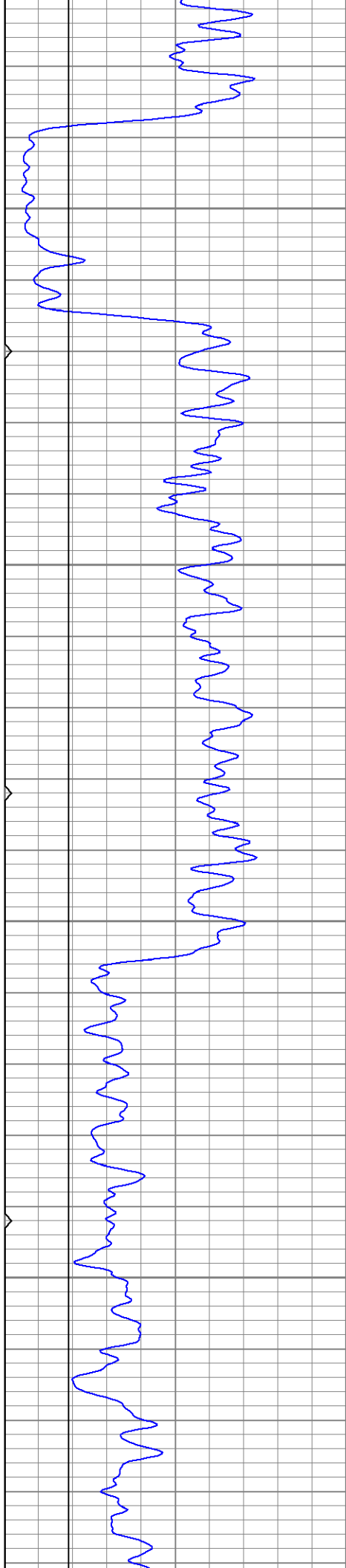
550

600







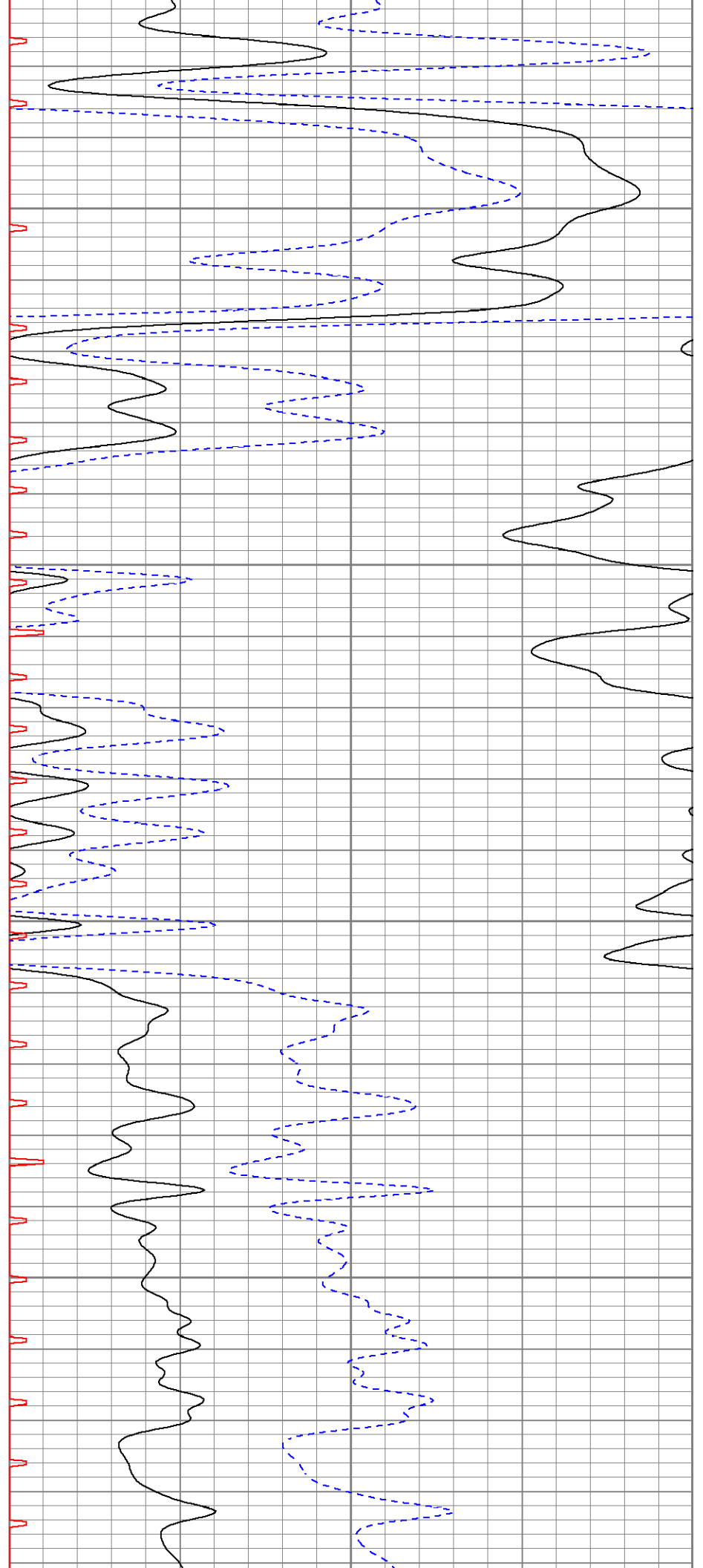


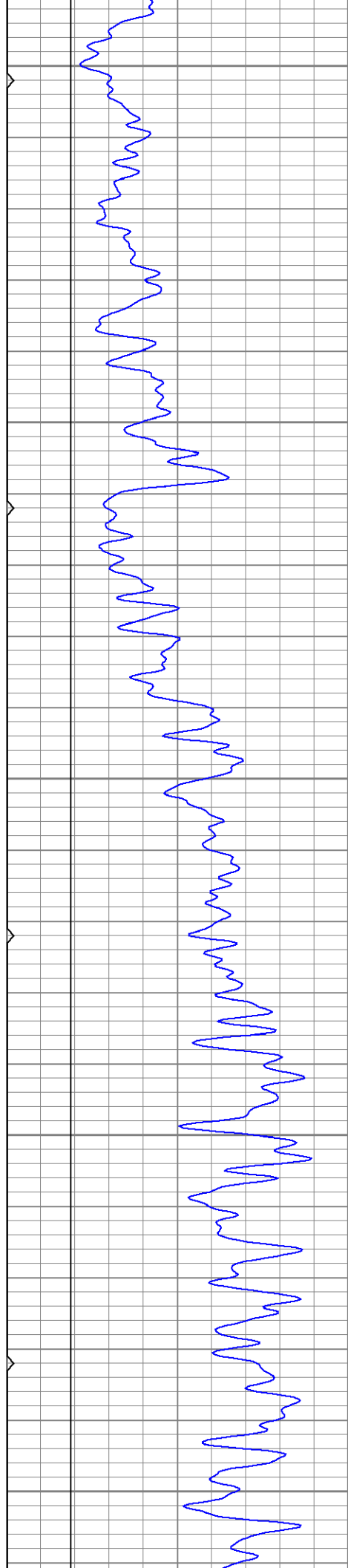
1100

1150

1200

1250





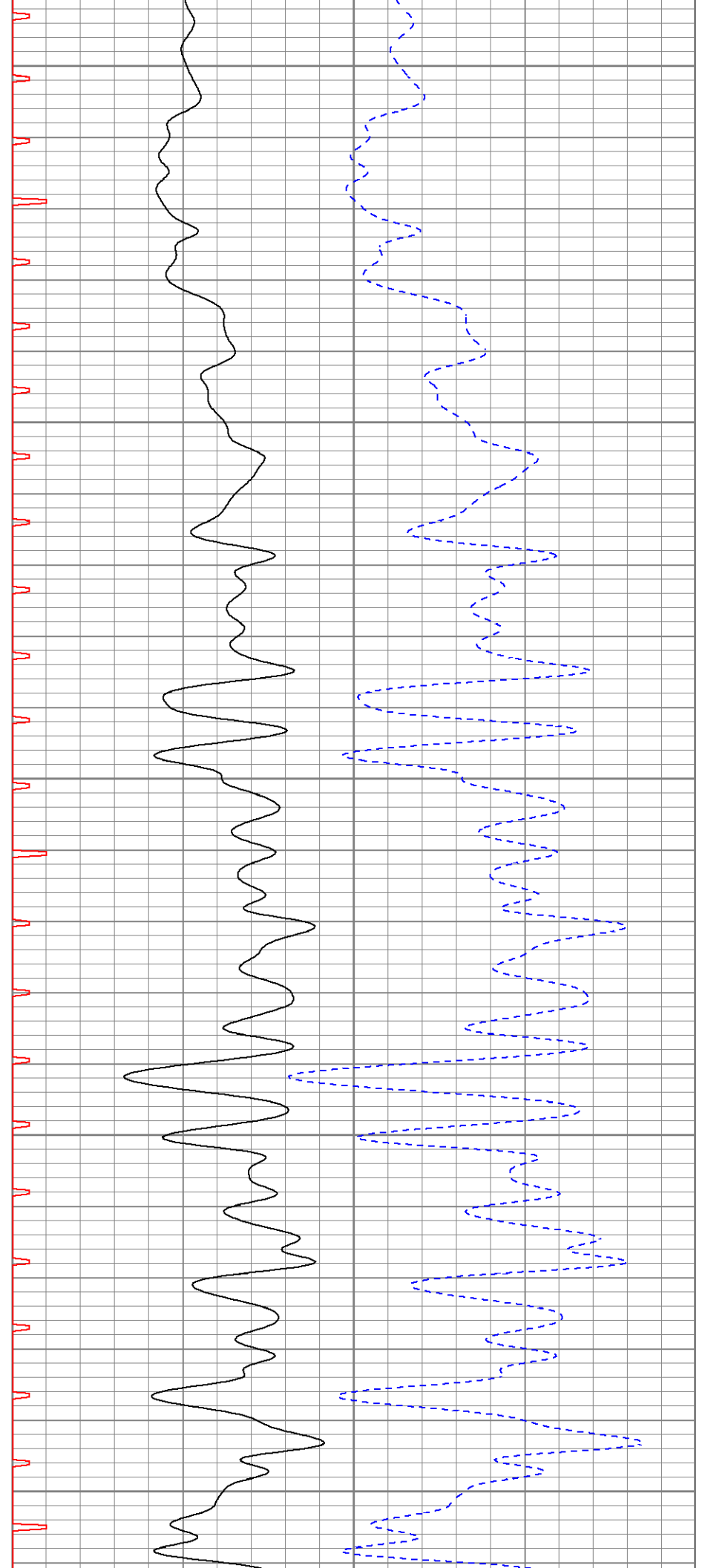
1300

1350

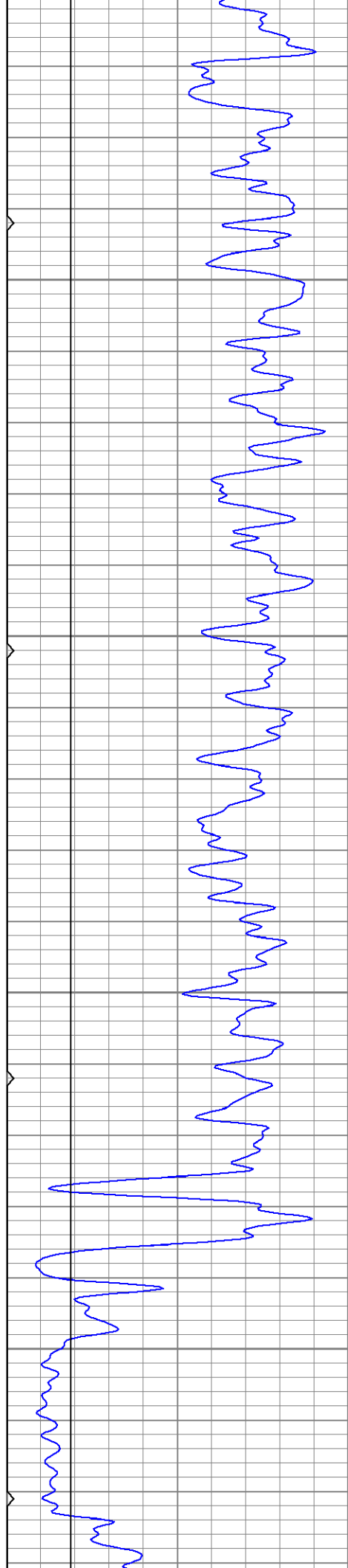
1400

1450

1500





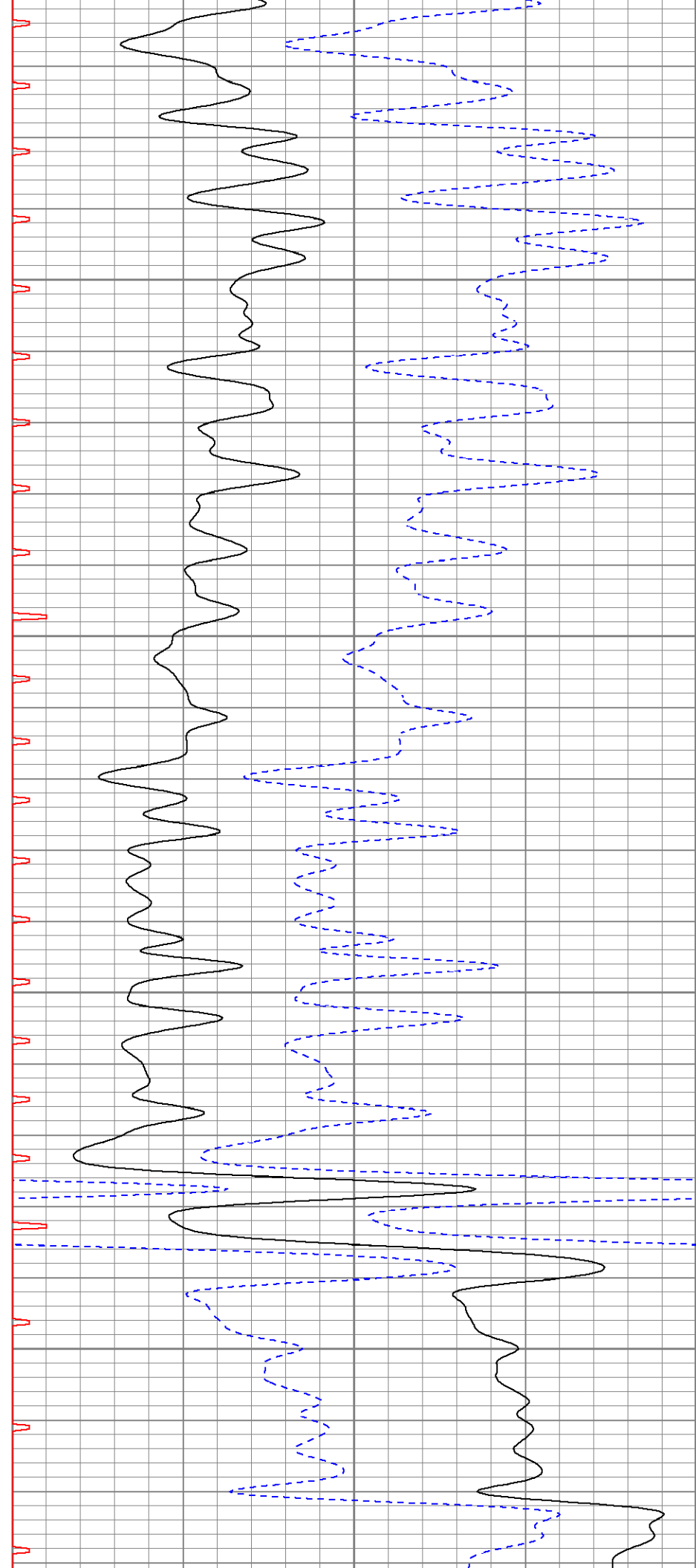


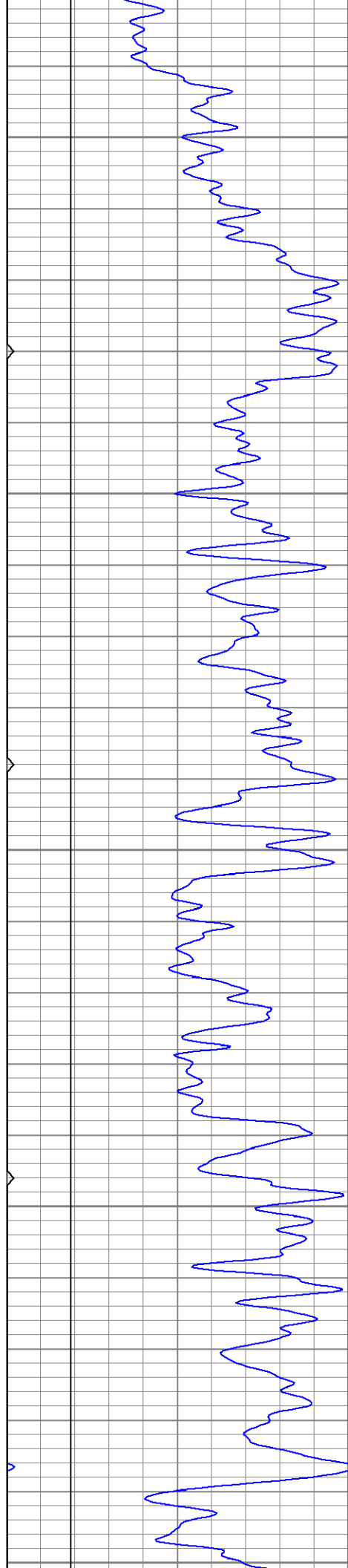
1550

1600

1650

1700





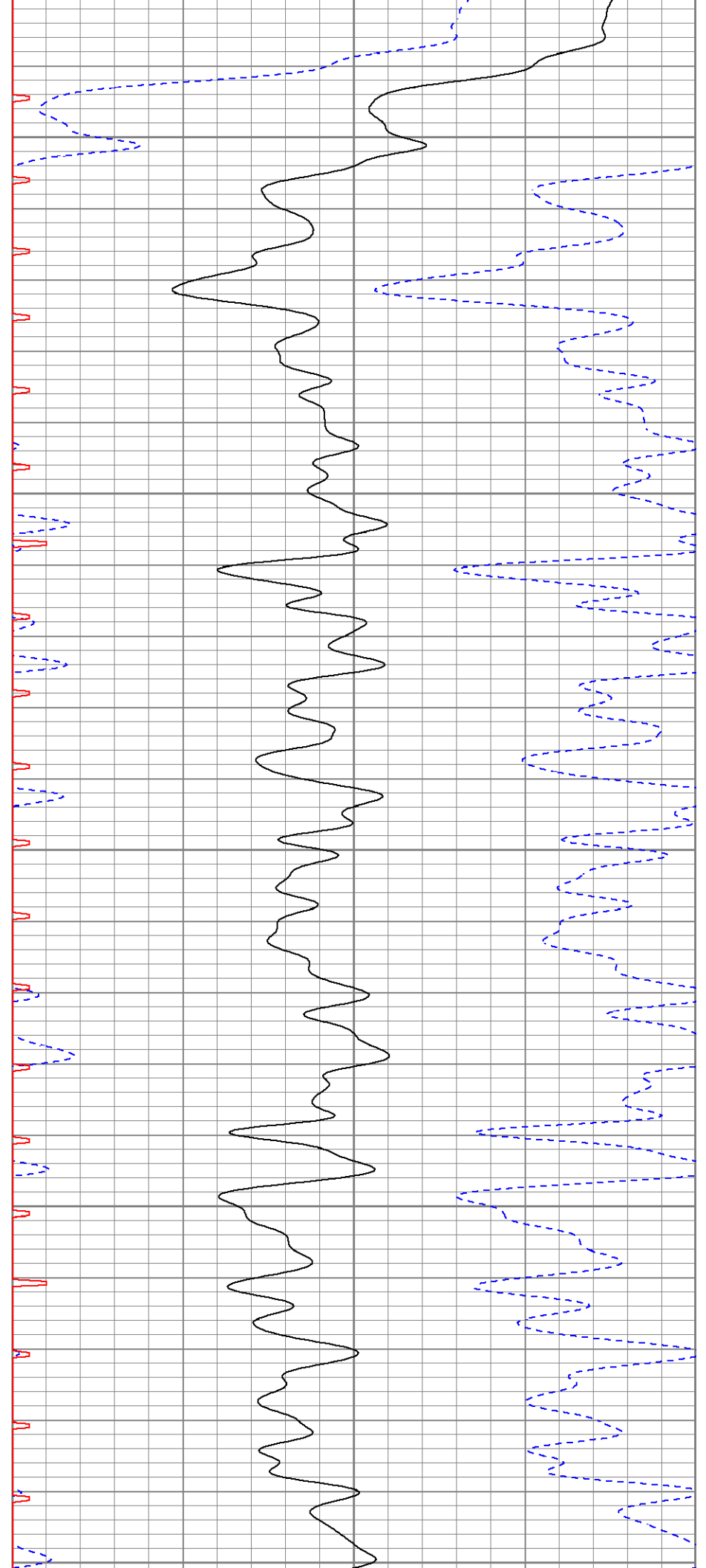
1750

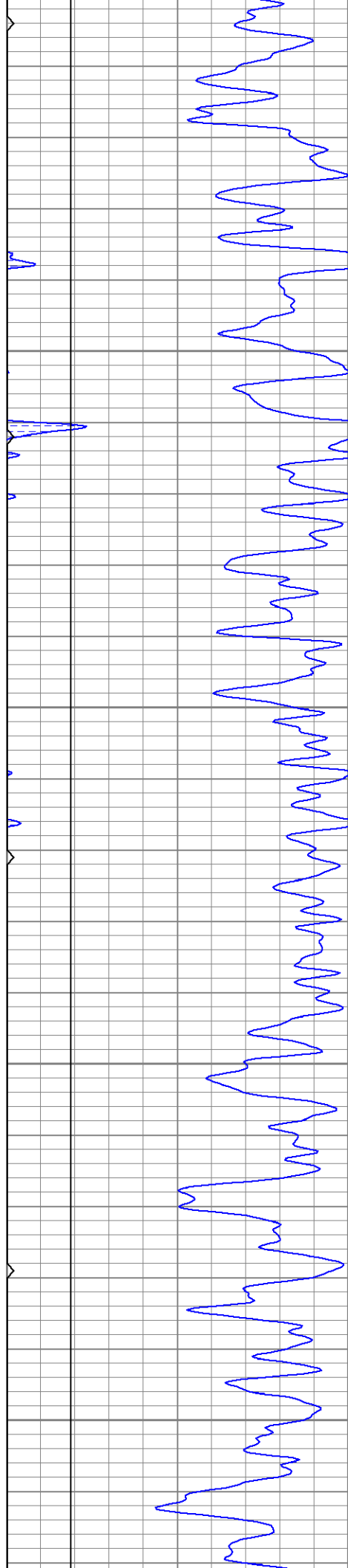
1800

1850

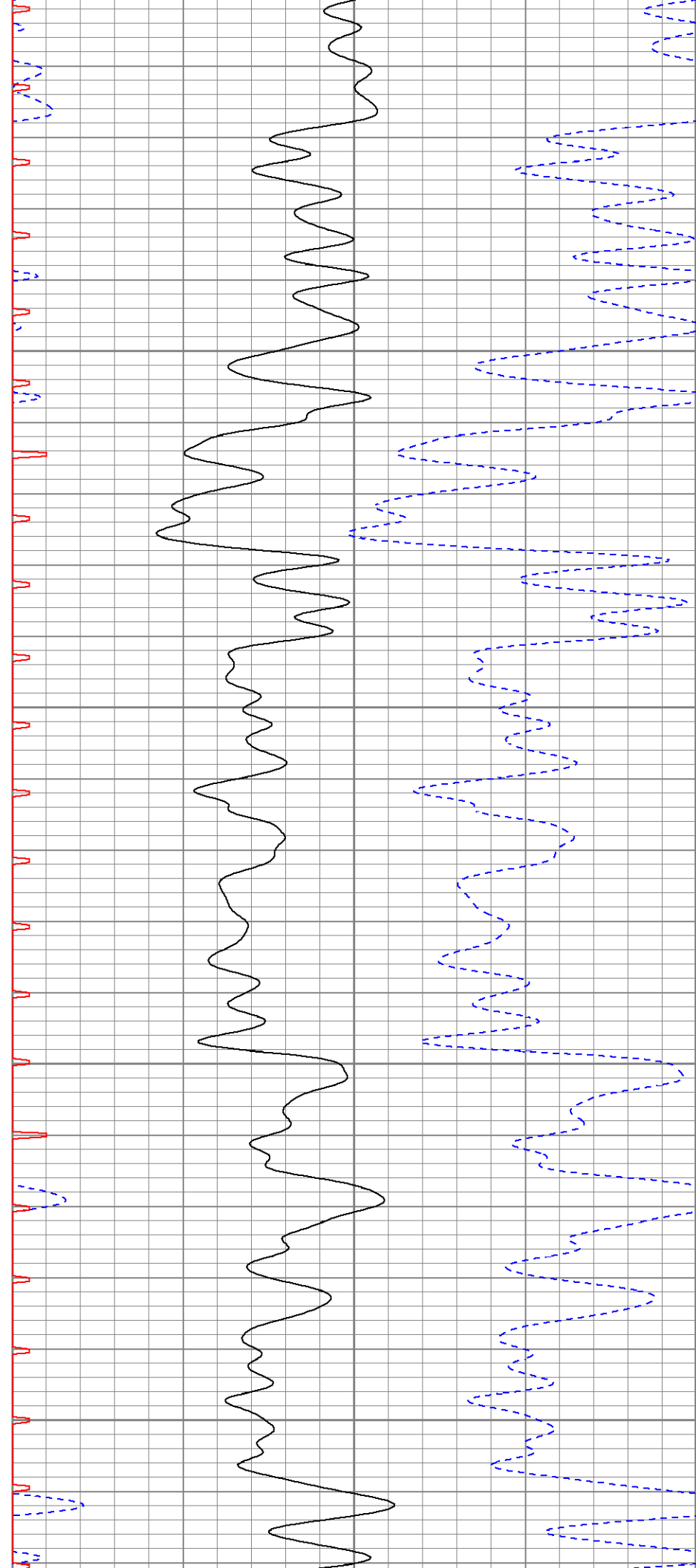
1900

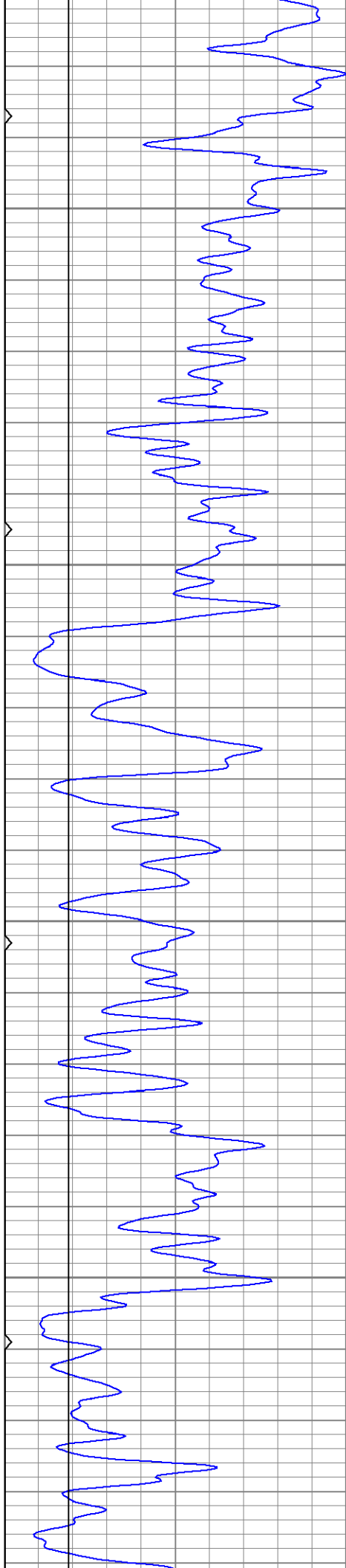
1950





2000  
2050  
2100  
2150



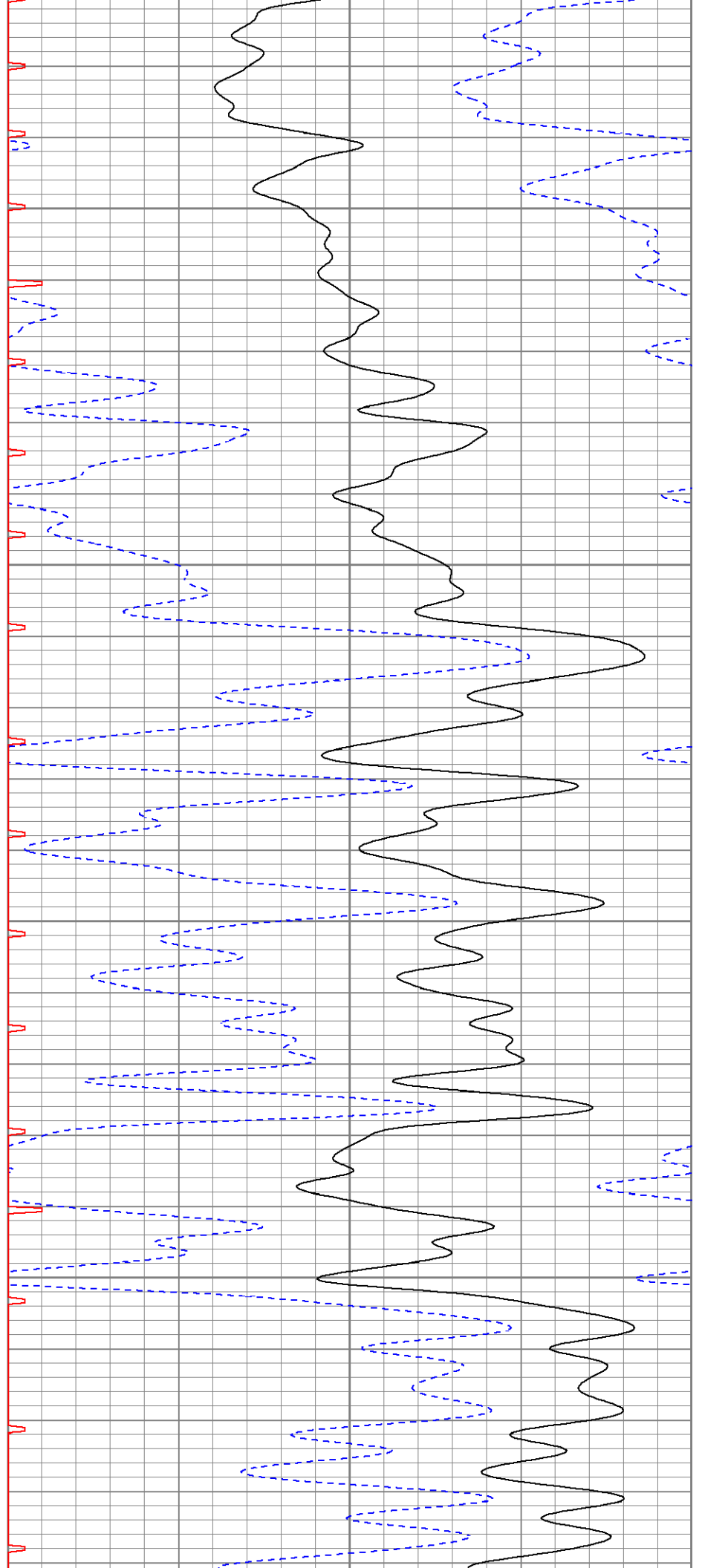


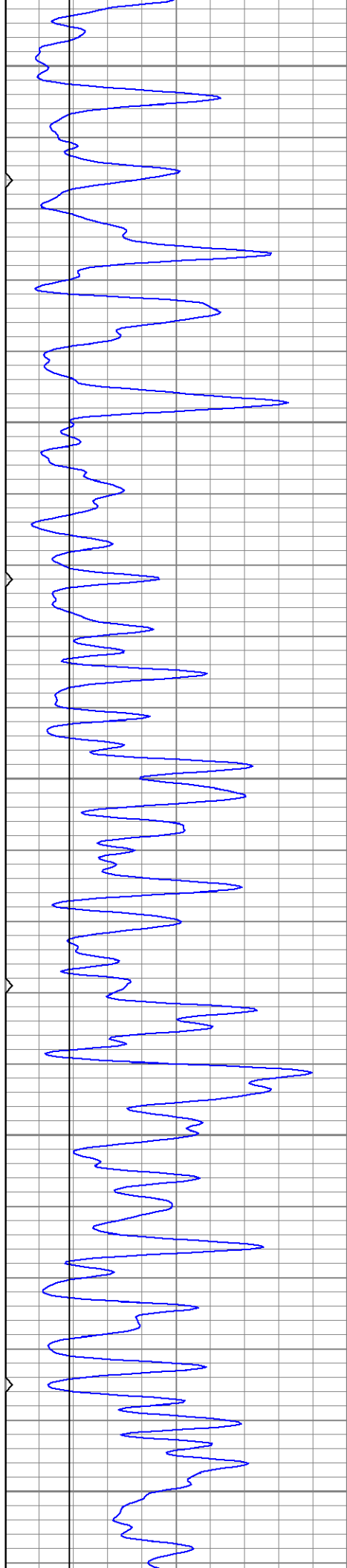
2200

2250

2300

2350





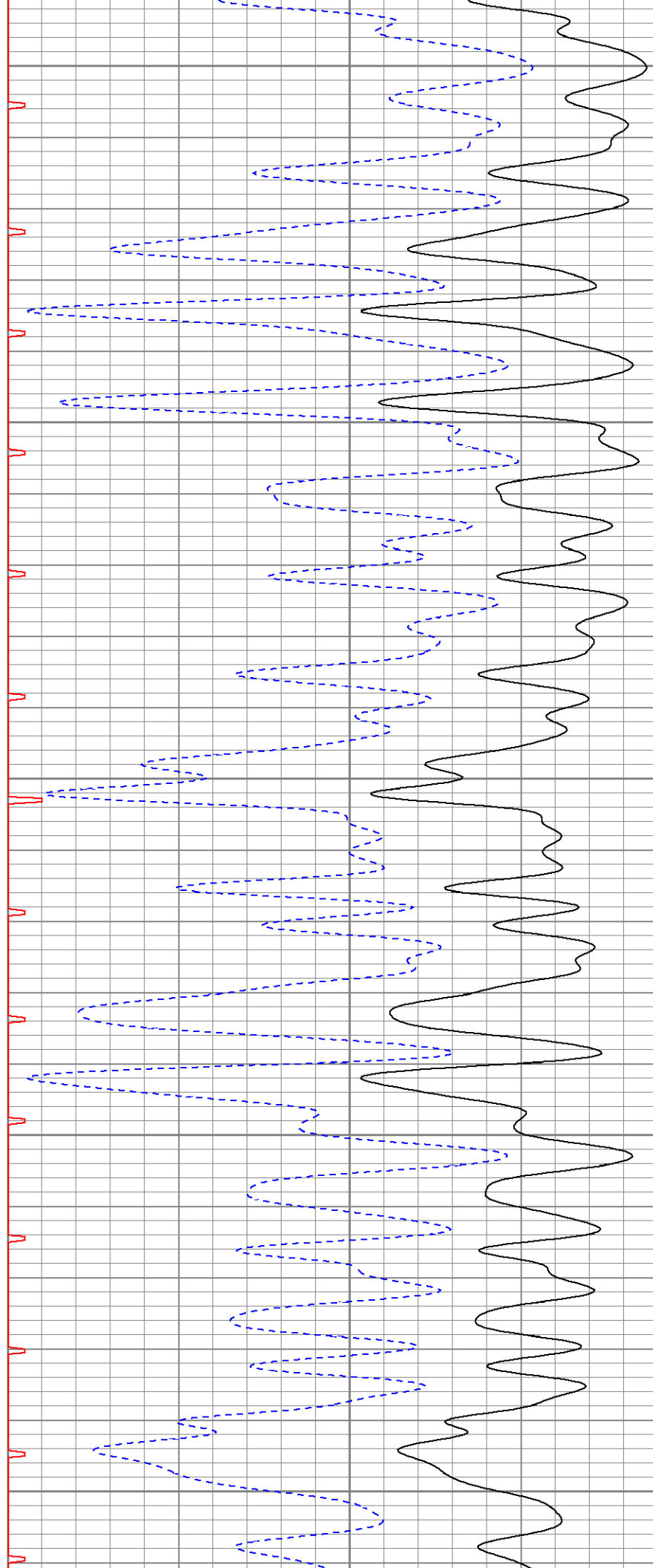
2400

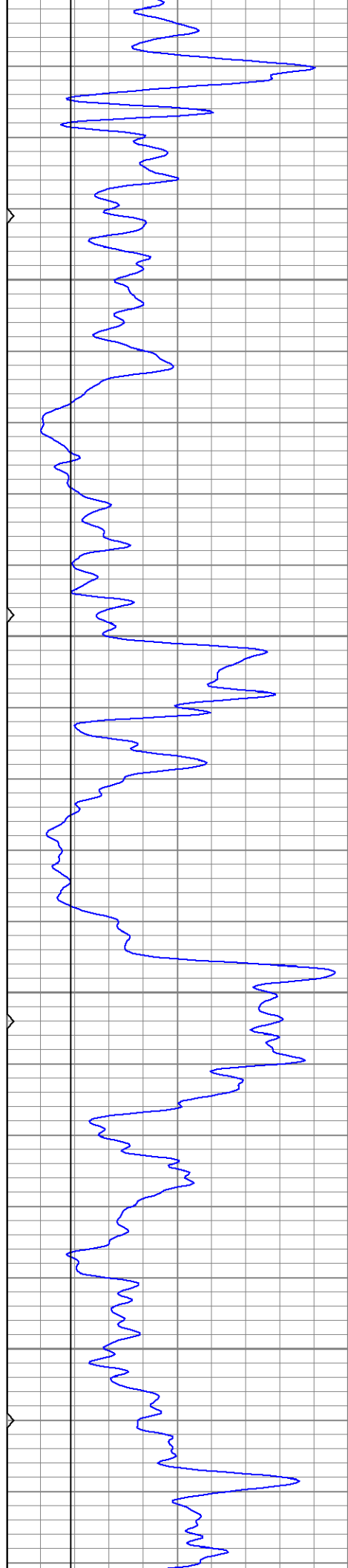
2450

2500

2550

2600



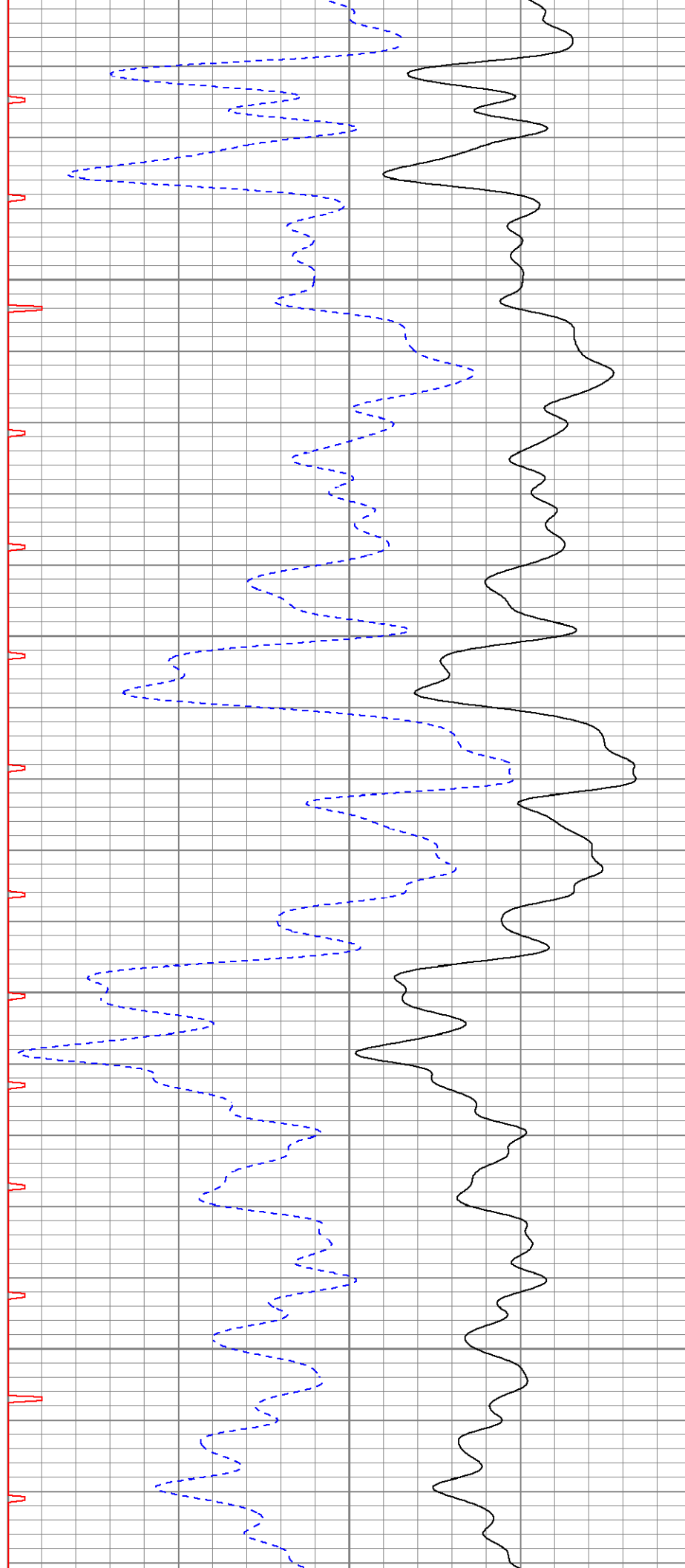


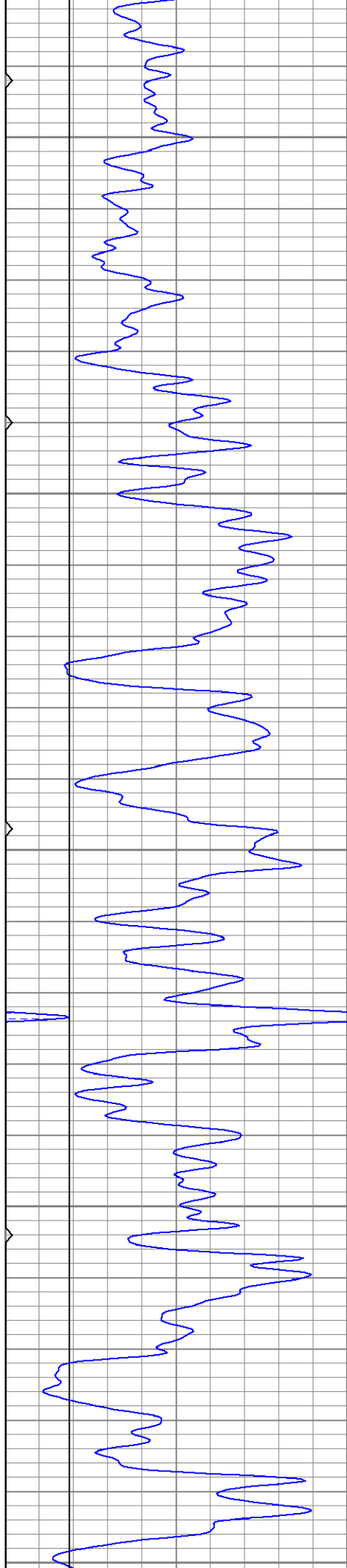
2650

2700

2750

2800





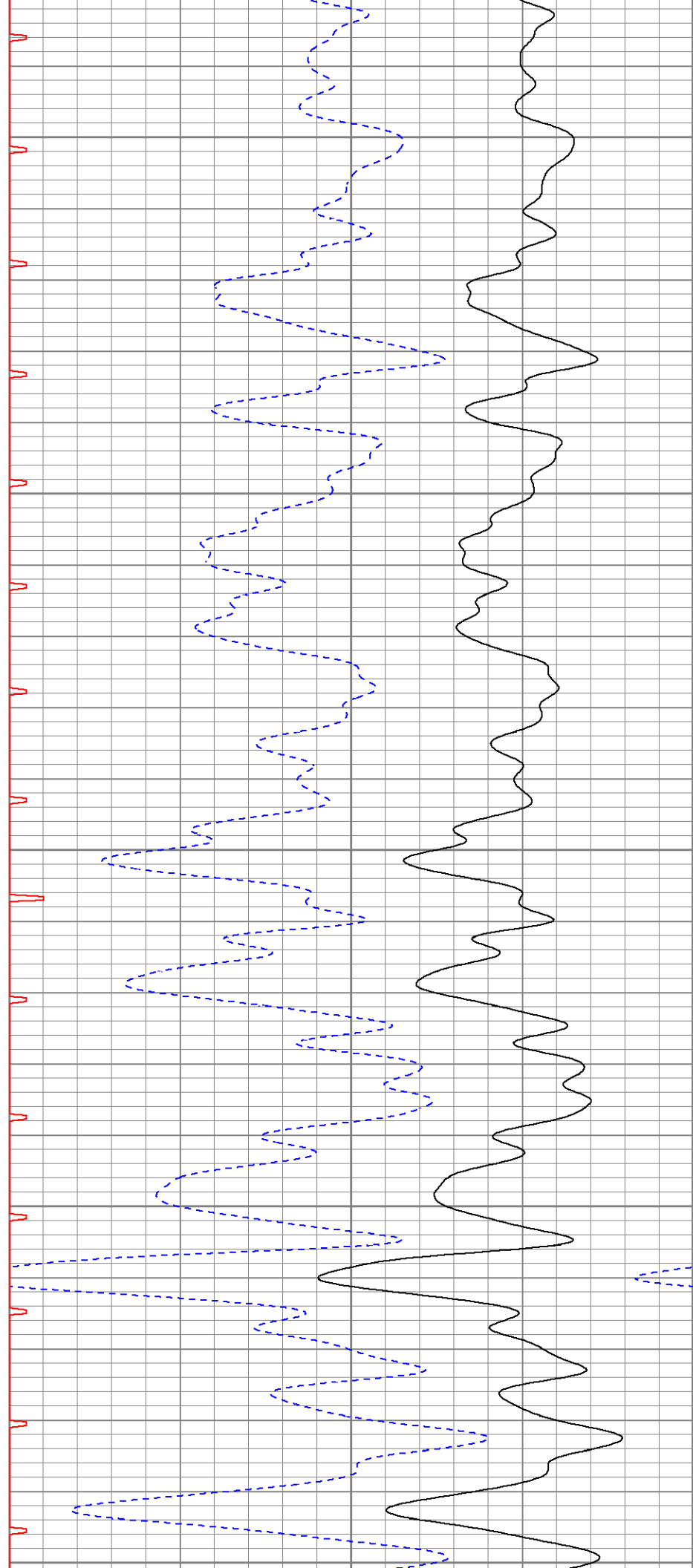
2850

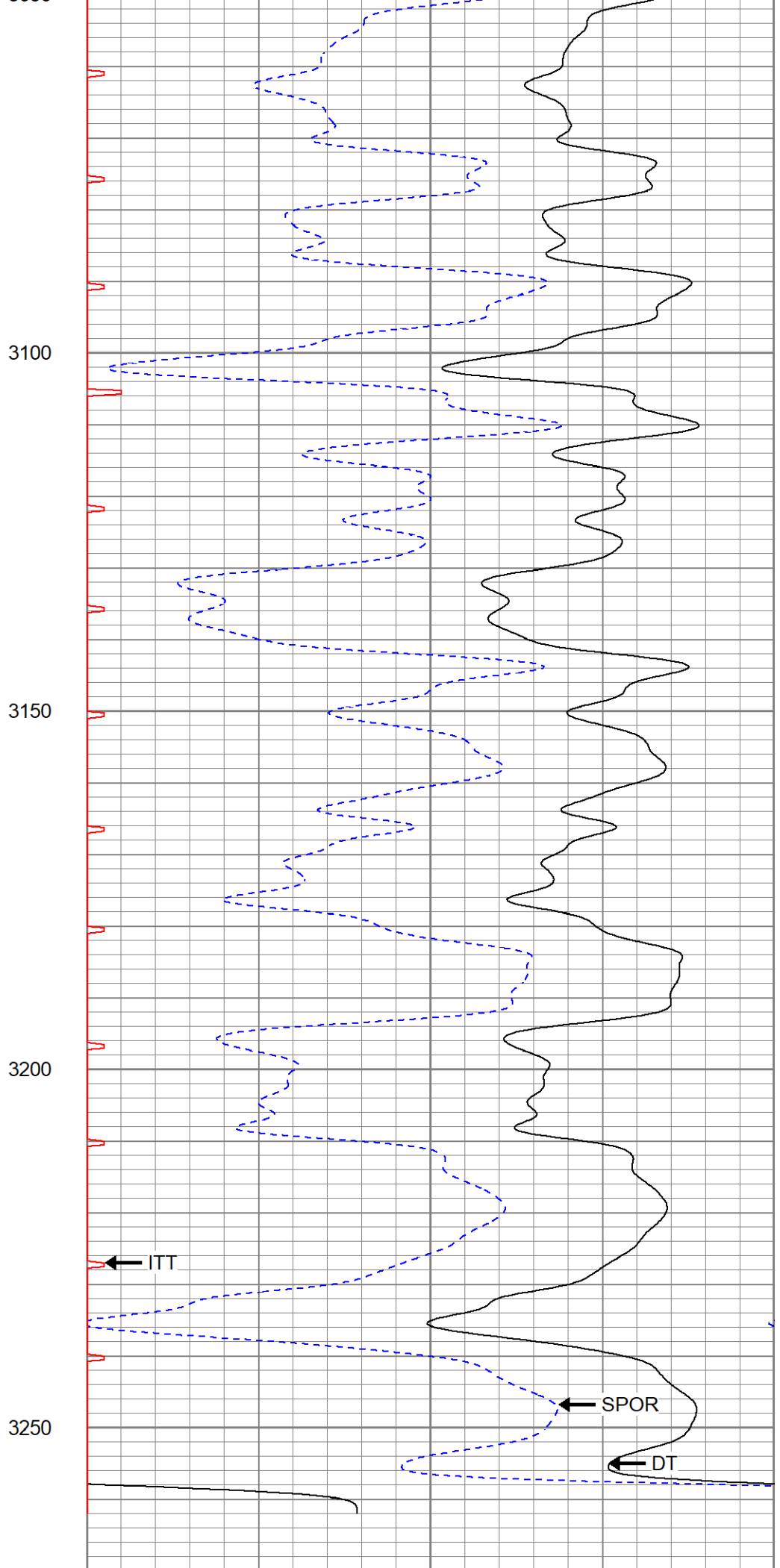
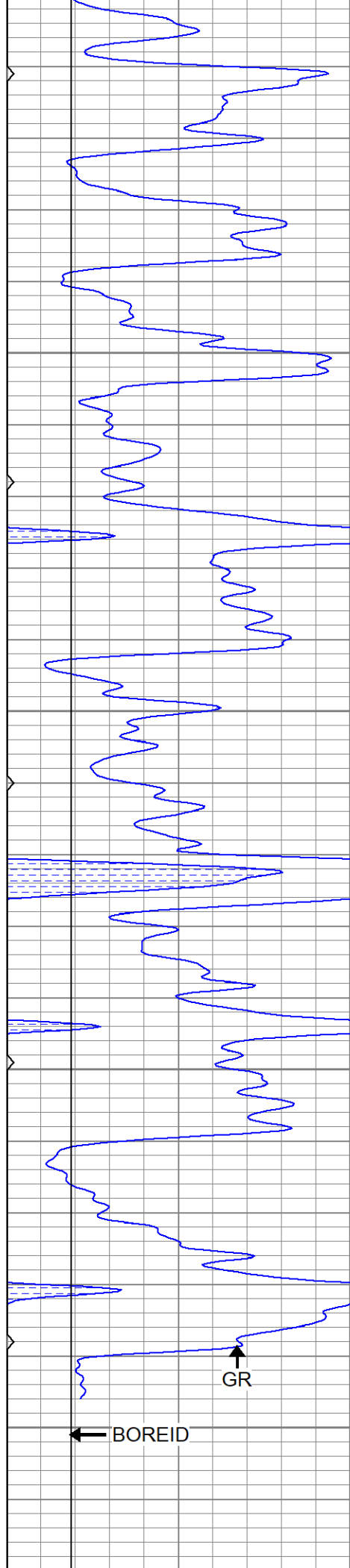
2900

2950

3000

3050







0	GR (GAPI)	150
6	BOREID (in)	16
0	MINMK	50

140	DT (usec/ft)	40
30	SPOR (pu)	-10
0	ITT (msec)	20

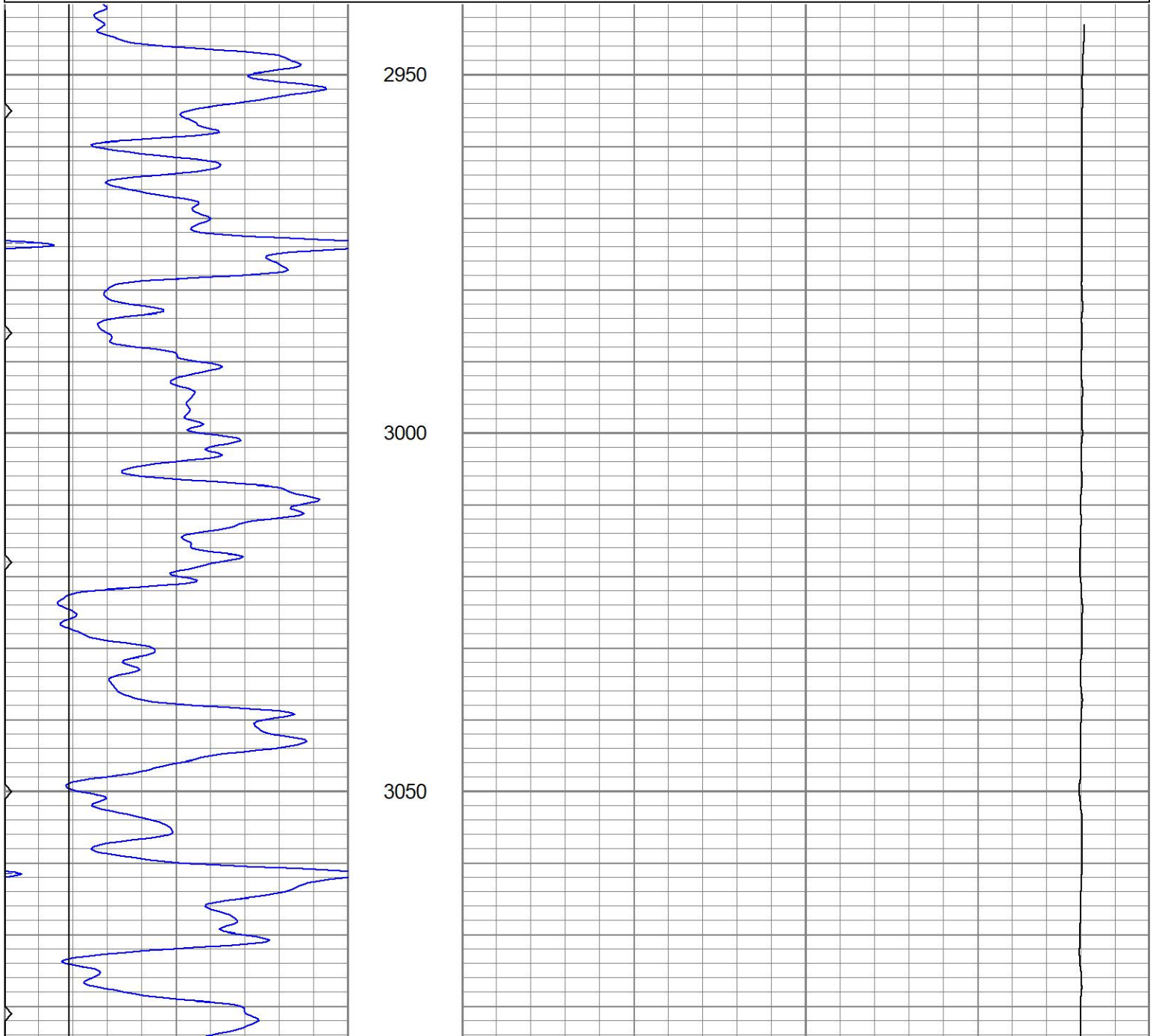


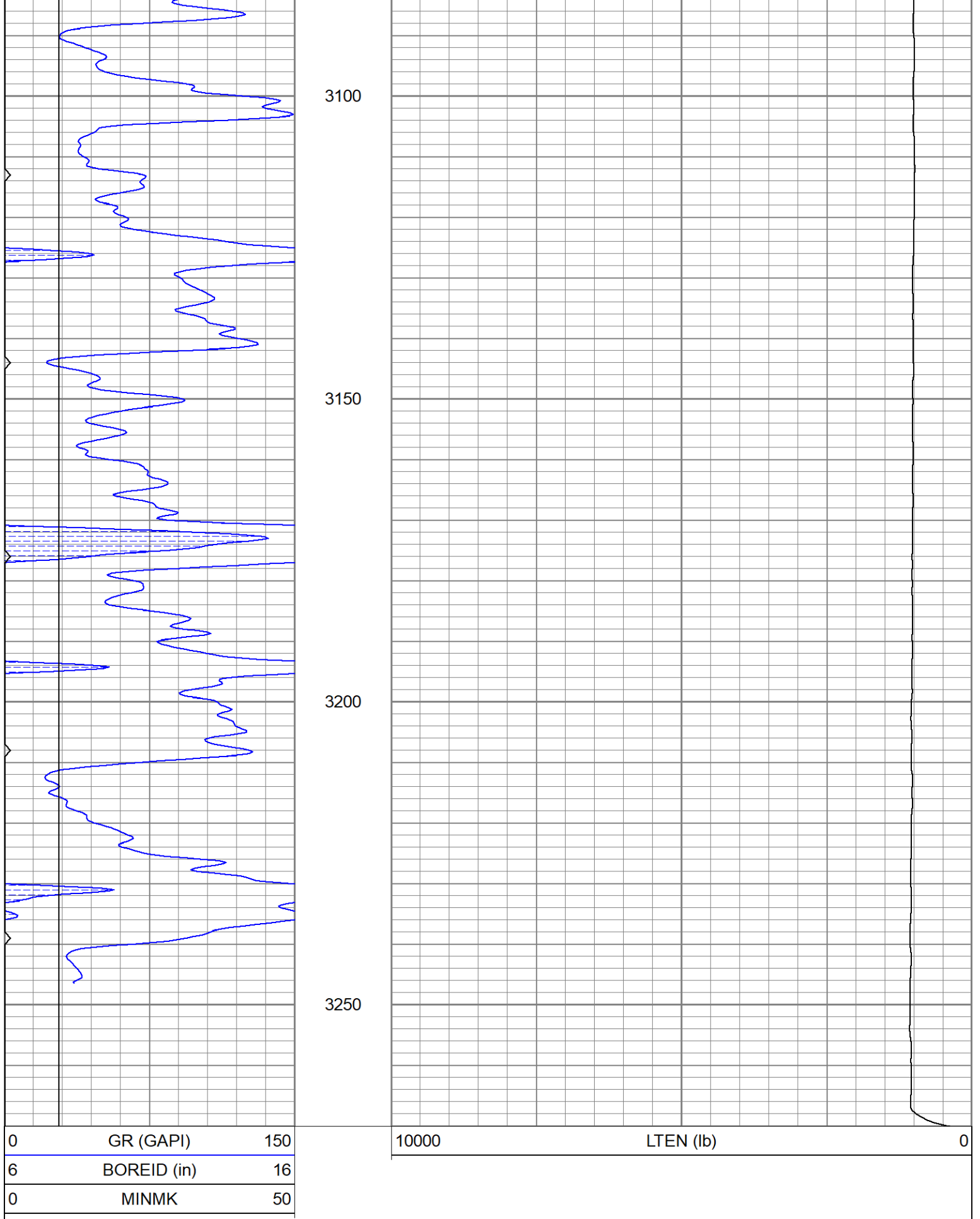
# REPEAT SECTION

Database File      semueller#1-6-atu-353xoh.db  
 Dataset Pathname   pass3.1  
 Presentation Format   kbc  
 Dataset Creation    Sun Sep 04 05:11:00 2022  
 Charted by          Depth in Feet scaled 1:240

0	GR (GAPI)	150
6	BOREID (in)	16
0	MINMK	50

10000	LTEN (lb)	0
-------	-----------	---





Calibration Report

Database File      semueller#1-6-atu-353xoh.db  
 Dataset Pathname   pass4  
 Dataset Creation    Sun Sep 04 05:10:23 2022

Gamma Ray Calibration Report

Serial Number: 2001  
 Tool Model: OH  
 Performed: Wed Jun 15 13:37:15 2022

Calibrator Value: 1.0 GAPI

Background Reading: 0.0 cps  
 Calibrator Reading: 1.0 cps

Sensitivity: 0.8200 GAPI/cps

Sensor	Offset (ft)	Schematic	Description	Length (ft)	O.D. (in)	Weight (lb)
GR	21.38		CHD-STD	0.50	1.69	1.00
			GR-OH (2001) 2001	3.56	3.25	40.00
WVF4	14.25		SLT-G (372) Sonic	15.71	3.50	250.00
WVF3	13.25					
WVF2	10.25					
WVF1	9.25		CENT-OHlong Open Hole long Centralizer	4.50	3.50	50.00

Dataset: semueller#1-6-atu-353xoh.db: field/well/run1/pass4  
 Total length: 24.27 ft  
 Total weight: 341.00 lb  
 O.D.: 3.50 in