

MICRO
LOG



Company MULL DRILLING COMPANY, INC.
Well FUNK #1-7
Field LANGER
County NESS State KANSAS

Location: API #: 15-135-26173-0000
307' FSL & 1606' FWL
SW - SE - SW
SEC 7 TWP 18S RGE 22W
Permanent Datum GROUND LEVEL Elevation 2227
Log Measured From KELLY BUSHING 8' A.G.L.
Drilling Measured From KELLY BUSHING
Other Services
CDL/CNL/PE
DIL/SONIC
Elevation
K.B. 2235
D.F. 2233
G.L. 2227

Date	5/25/22		
Run Number	TWO		
Depth Driller	4330		
Depth Logger	4326		
Bottom Logged Interval	4310		
Top Log Interval	3500		
Casing Driller	8 5/8"@266'		
Casing Logger	266		
Bit Size	7 7/8"		
Type Fluid in Hole	CHEMICAL MUD	CHLORIDES: 1,800 PPM	
Density / Viscosity	9.3/51		
pH / Fluid Loss	11.0/6.0		
Source of Sample	FLOWLINE		
Rm @ Meas. Temp	1.20@70F		
Rmf @ Meas. Temp	.900@70F		
Rmc @ Meas. Temp	1.44@70F		
Source of Rmf / Rmc	MEASURED		
Rm @ BHT	.706@119F		
Time Circulation Stopped	4.5 HOURS		
Time Logger on Bottom	4:15 P.M.		
Maximum Recorded Temperature	119F		
Equipment Number	8916		
Location	HAYS, KANSAS		
Recorded By	JEFF LUEBBERS		
Witnessed By	PHIL ASKEY		

<<< Fold Here >>>

All interpretations are opinions based on inferences from electrical or other measurements and we cannot and do not guarantee the accuracy or correctness of any interpretation, and we shall not, except in the case of gross or willful negligence on our part, be liable or responsible for any loss, costs, damages, or expenses incurred or sustained by anyone resulting from any interpretation made by any of our officers, agents or employees. These interpretations are also subject to our general terms and conditions set out in our current Price Schedule.

Comments

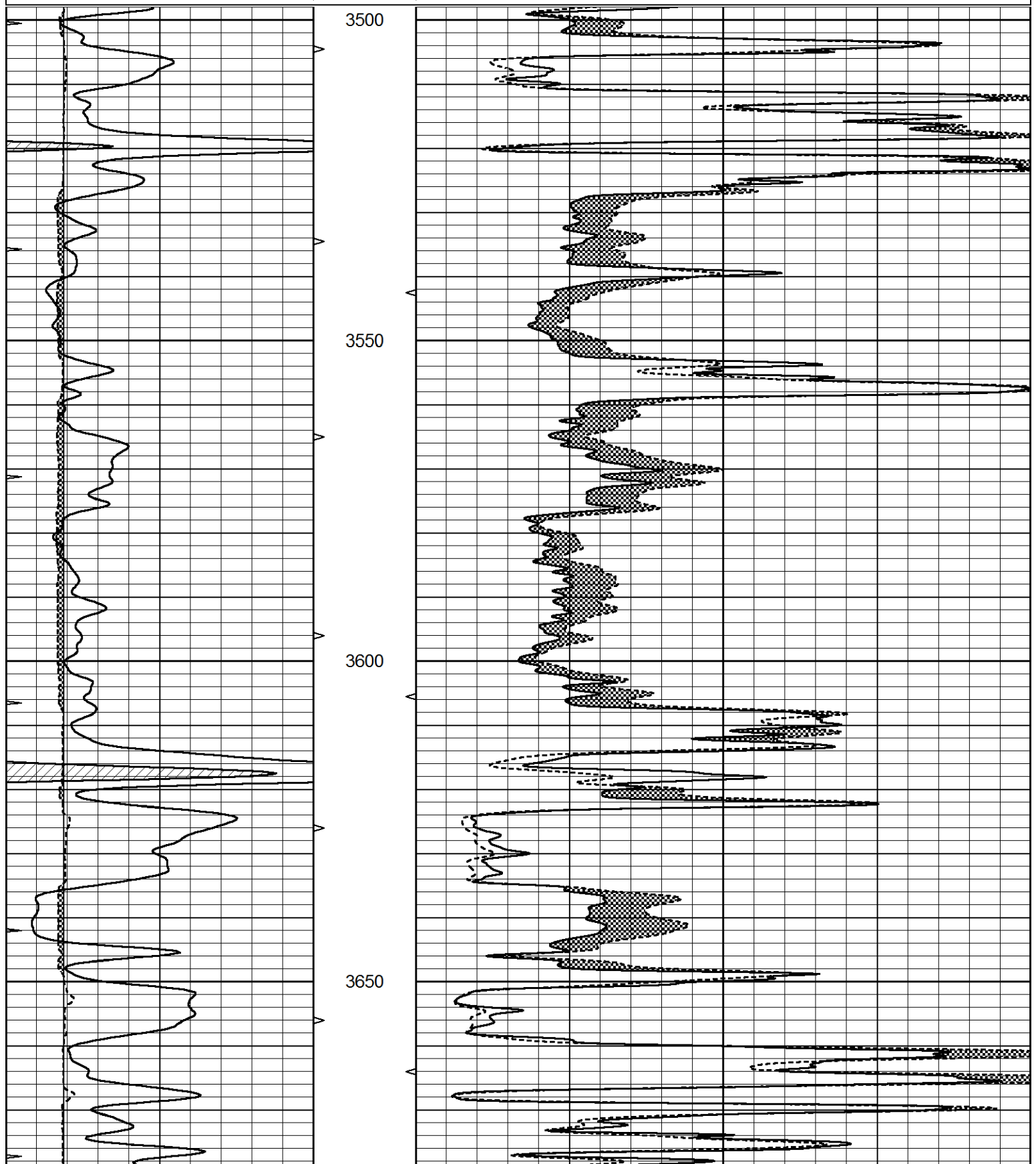
THANK YOU FOR USING ELI WIRELINE, HAYS, KS. (785) 628-6395
DIRECTIONS:
BAZINE, KS., 6W. ON HWY 96 TO "RD. X", 3 1/2N. TO TANK BATTERY, 1/2E. ON LEASE RD., THEN
BACK S. PAST PUMPING UNIT

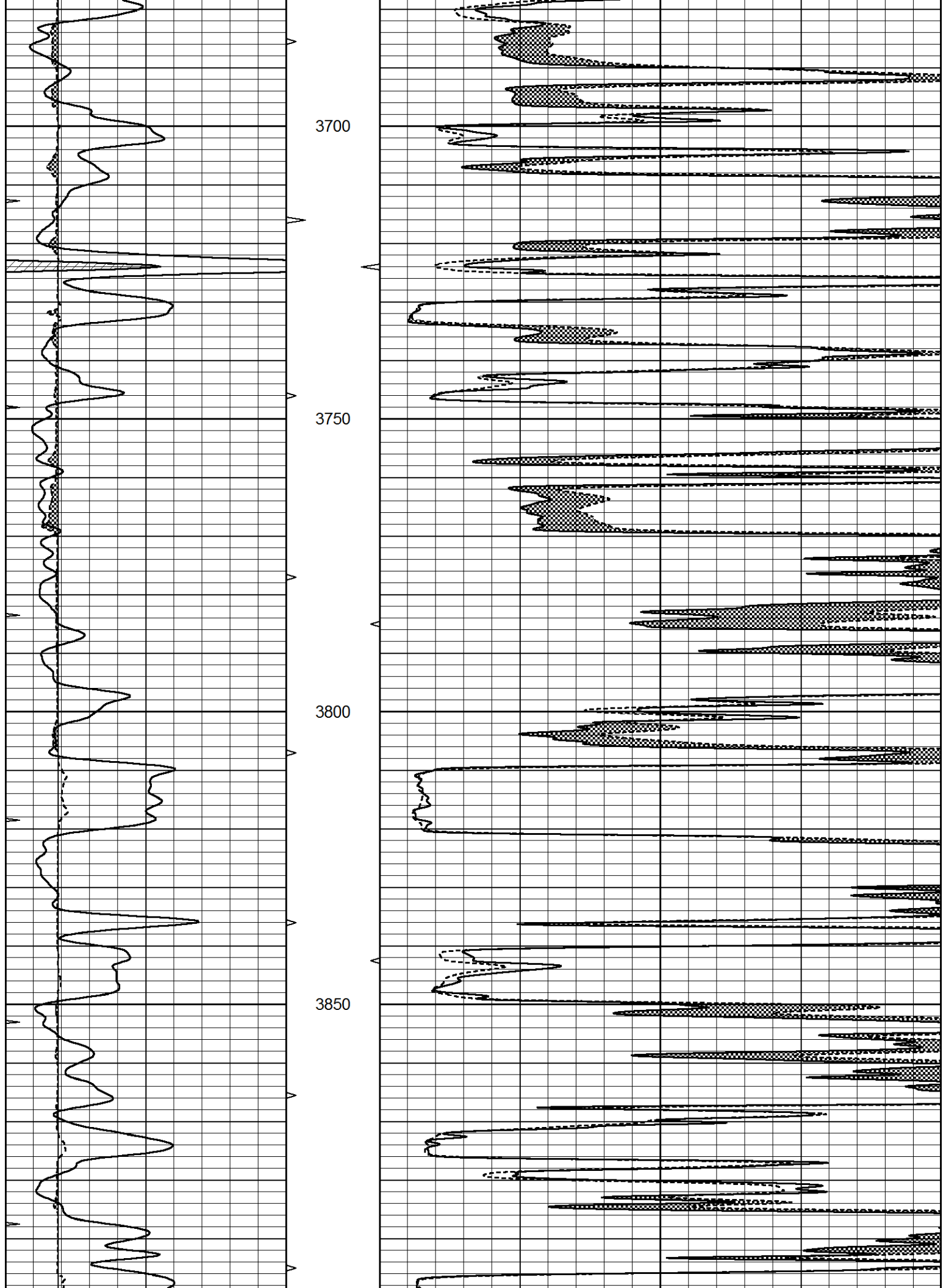


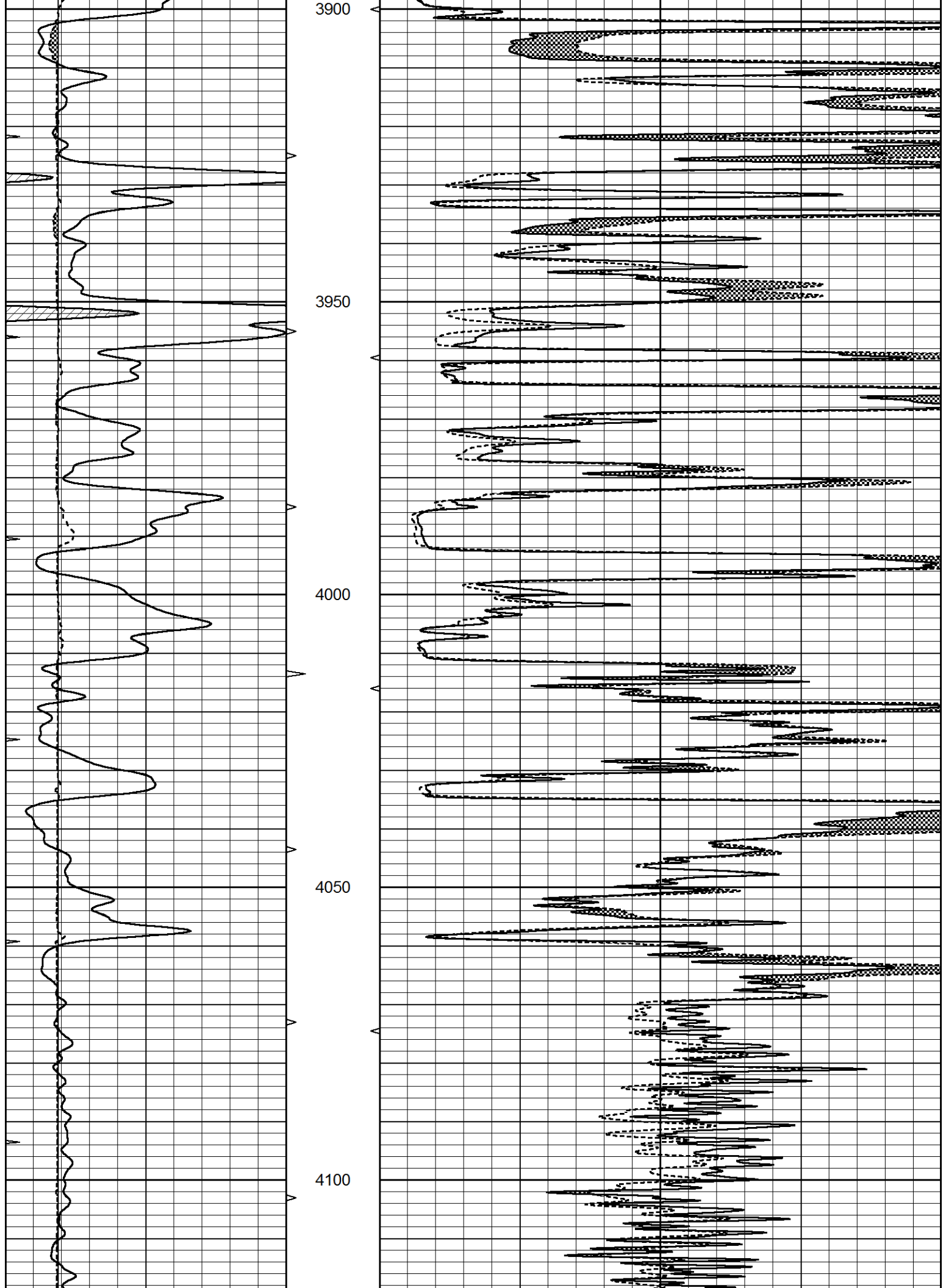
MAIN SECTION

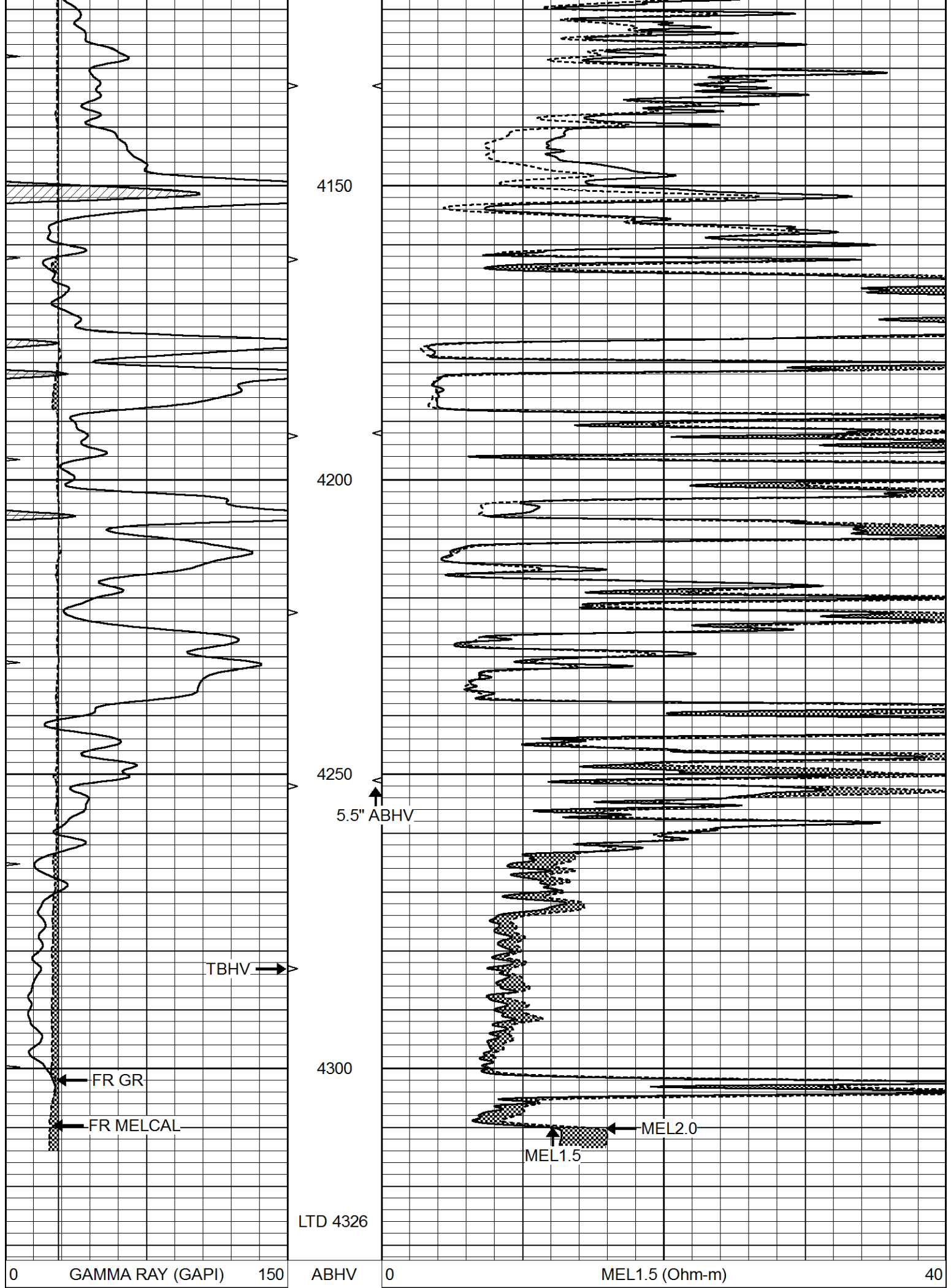
Database File 6556pe.db
 Dataset Pathname pass7.3
 Presentation Format _micro
 Dataset Creation Wed May 25 17:17:21 2022
 Charted by Depth in Feet scaled 1:240

0	GAMMA RAY (GAPI)	150	ABHV	0	MEL1.5 (Ohm-m)	40
6	CALIPER (in)	16	10 (ft3)	0	MEL2.0 (Ohm-m)	40
0	MINMK	20	TBHV			
			0 (ft3)	10		









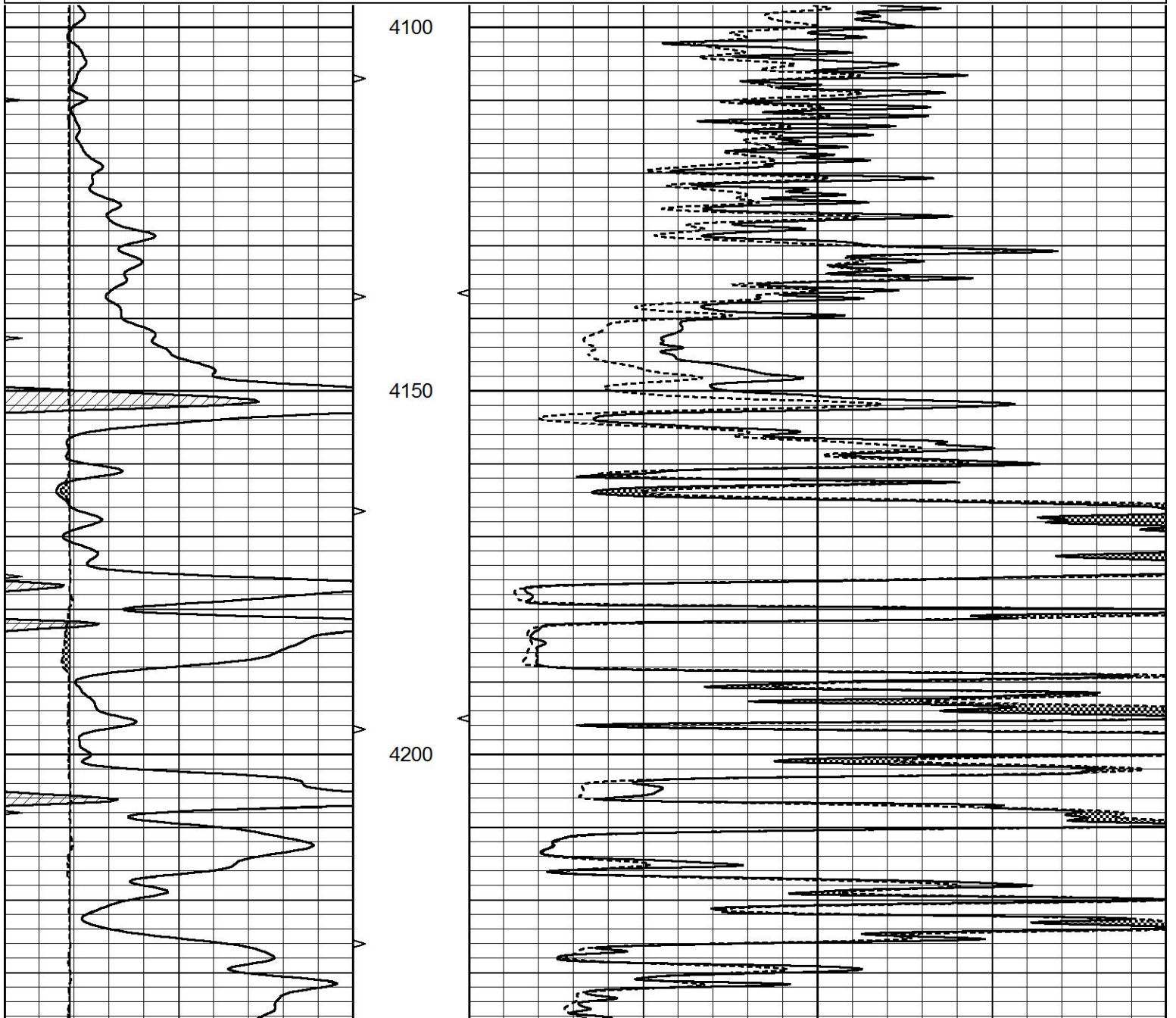
6	CALIPER (in)	16	10 (ft3)	0 0	MEL2.0 (Ohm-m)	40
0	MINMK	20	TBHV			
			0 (ft3)	10		

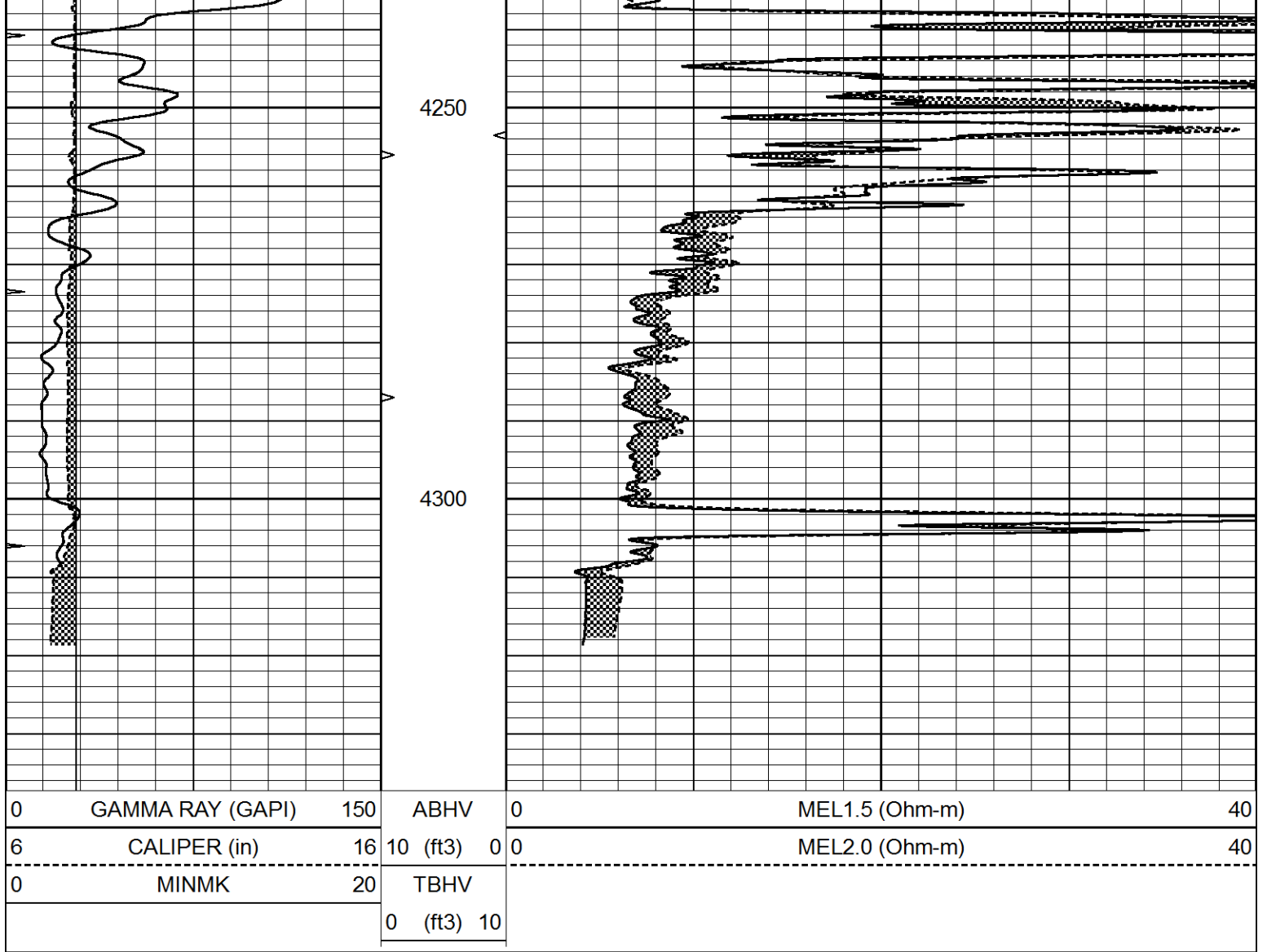


REPEAT SECTION

Database File 6556pe.db
 Dataset Pathname pass6.4
 Presentation Format _micro
 Dataset Creation Wed May 25 17:20:59 2022
 Charted by Depth in Feet scaled 1:240

0	GAMMA RAY (GAPI)	150	ABHV	0	MEL1.5 (Ohm-m)	40
6	CALIPER (in)	16	10 (ft3)	0 0	MEL2.0 (Ohm-m)	40
0	MINMK	20	TBHV			
			0 (ft3)	10		





Calibration Report

Database File 6556pe.db
 Dataset Pathname pass7.3
 Dataset Creation Wed May 25 17:17:21 2022

MICRO Calibration Report

Serial Number: MICRO6
 Tool Model: PROBE
 Performed: Wed May 25 16:39:43 2022

Caliper Calibration: Gain=2.827 Offset=4.466

References	Low Cal	High Cal
Readings	8.000	16.000
	1.250	4.080

1.5" Calibration: Gain=32.000 Offset=0.500

References	Low Cal	High Cal
Readings	0.000	20.000
	0.002	0.624

2" Calibration: Gain=40.000 Offset=0.000

References	Low Cal	High Cal
Readings	0.000	20.000
	0.006	0.468

Gamma Ray Calibration Report

Serial Number:	GR5	
Tool Model:	OPEN	
Performed:	Tue May 24 18:19:51 2022	
Calibrator Value:	1.0	GAPI
Background Reading:	0.0	cps
Calibrator Reading:	1.0	cps
Sensitivity:	0.5400	GAPI/cps