

# SONIC LOG



Company MULL DRILLING COMPANY, INC.  
 Well FUNK #1-7  
 Field LANGER  
 County NESS State KANSAS

Location: API #: 15-135-26173-0000  
 307' FSL & 1606' FWL  
 SW - SE - SW  
 SEC 7 TWP 18S RGE 22W  
 Permanent Datum GROUND LEVEL Elevation 2227  
 Log Measured From KELLY BUSHING 8' A.G.L.  
 Drilling Measured From KELLY BUSHING  
 Other Services CDL/CNL/PE DIL/MEL  
 Elevation K.B. 2235 D.F. 2233 G.L. 2227

Date	5/25/22
Run Number	TWO
Depth Driller	4330
Depth Logger	4326
Bottom Logged Interval	4318
Top Log Interval	200
Casing Driller	8 5/8"@266'
Casing Logger	266
Bit Size	7 7/8"
Type Fluid in Hole	CHEMICAL MUD
Density / Viscosity	9.3/51
pH / Fluid Loss	11.0/6.0
Source of Sample	FLOWLINE
Rm @ Meas. Temp	1.20@70F
Rmf @ Meas. Temp	.900@70F
Rmc @ Meas. Temp	1.44@70F
Source of Rmf / Rmc	MEASURED
Rm @ BHT	.706@119F
Time Circulation Stopped	4:5 HOURS
Time Logger on Bottom	4:15 P.M.
Maximum Recorded Temperature	119F
Equipment Number	8916
Location	HAYS, KANSAS
Recorded By	JEFF LUEBBERS
Witnessed By	PHIL ASKEY

<<< Fold Here >>>

All interpretations are opinions based on inferences from electrical or other measurements and we cannot and do not guarantee the accuracy or correctness of any interpretation, and we shall not, except in the case of gross or willful negligence on our part, be liable or responsible for any loss, costs, damages, or expenses incurred or sustained by anyone resulting from any interpretation made by any of our officers, agents or employees. These interpretations are also subject to our general terms and conditions set out in our current Price Schedule.

### Comments

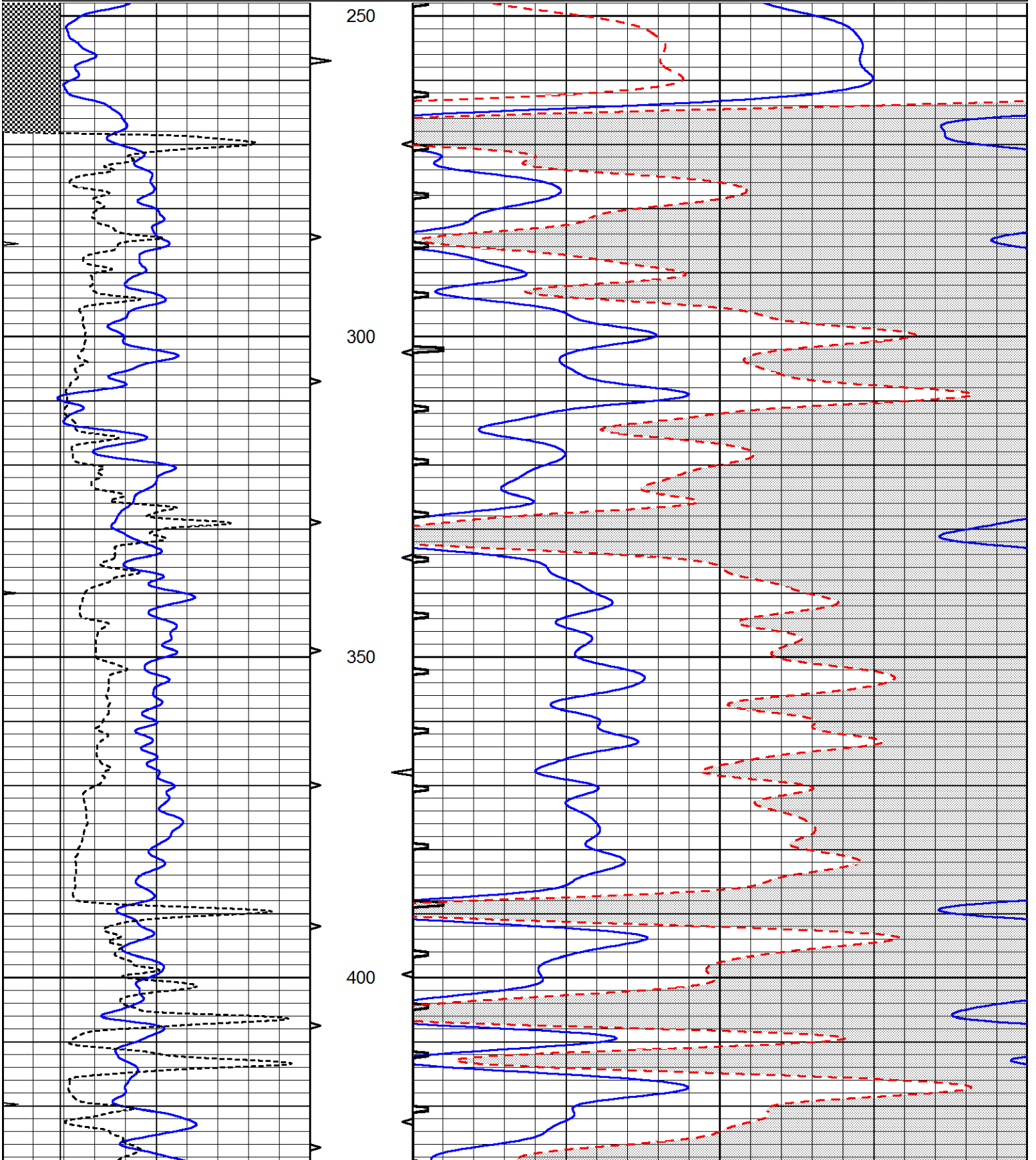
THANK YOU FOR USING ELI WIRELINE, HAYS, KS. (785) 628-6395  
 DIRECTIONS:  
 BAZINE, KS., 6W. ON HWY 96 TO "RD. X", 3 1/2N. TO TANK BATTERY, 1/2E. ON LEASE RD., THEN  
 BACK S. PAST PUMPING UNIT

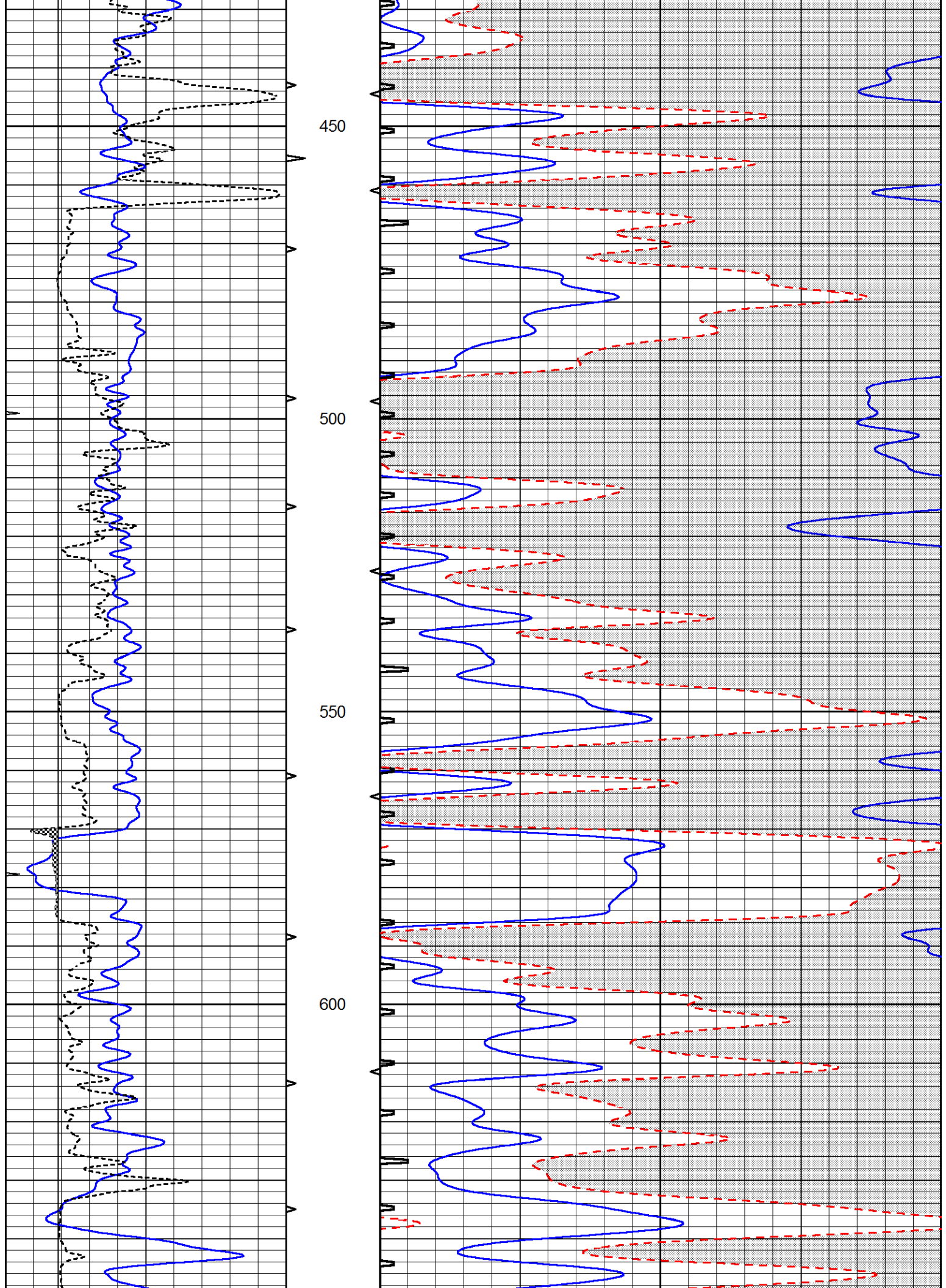


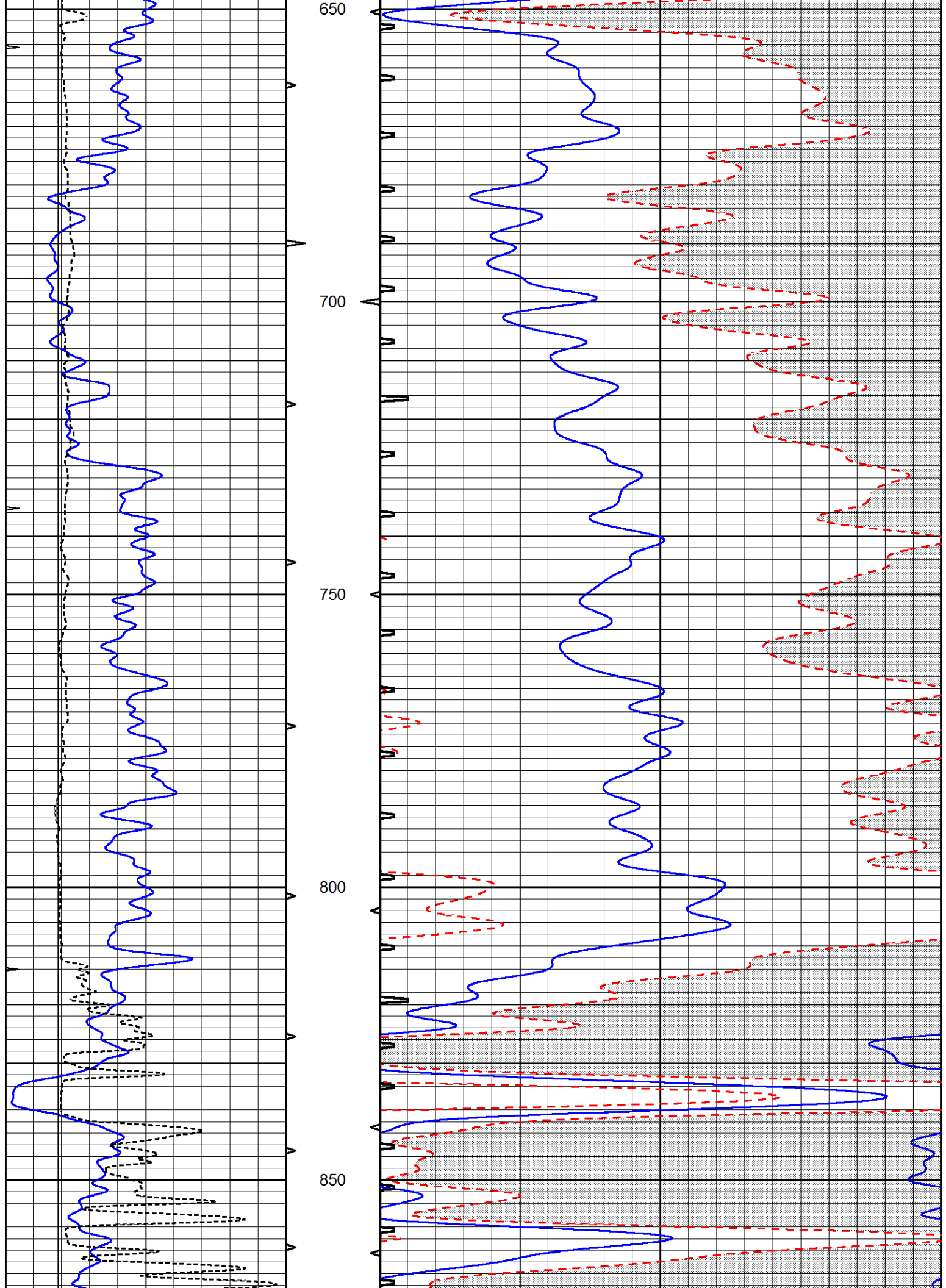
# MAIN SECTION

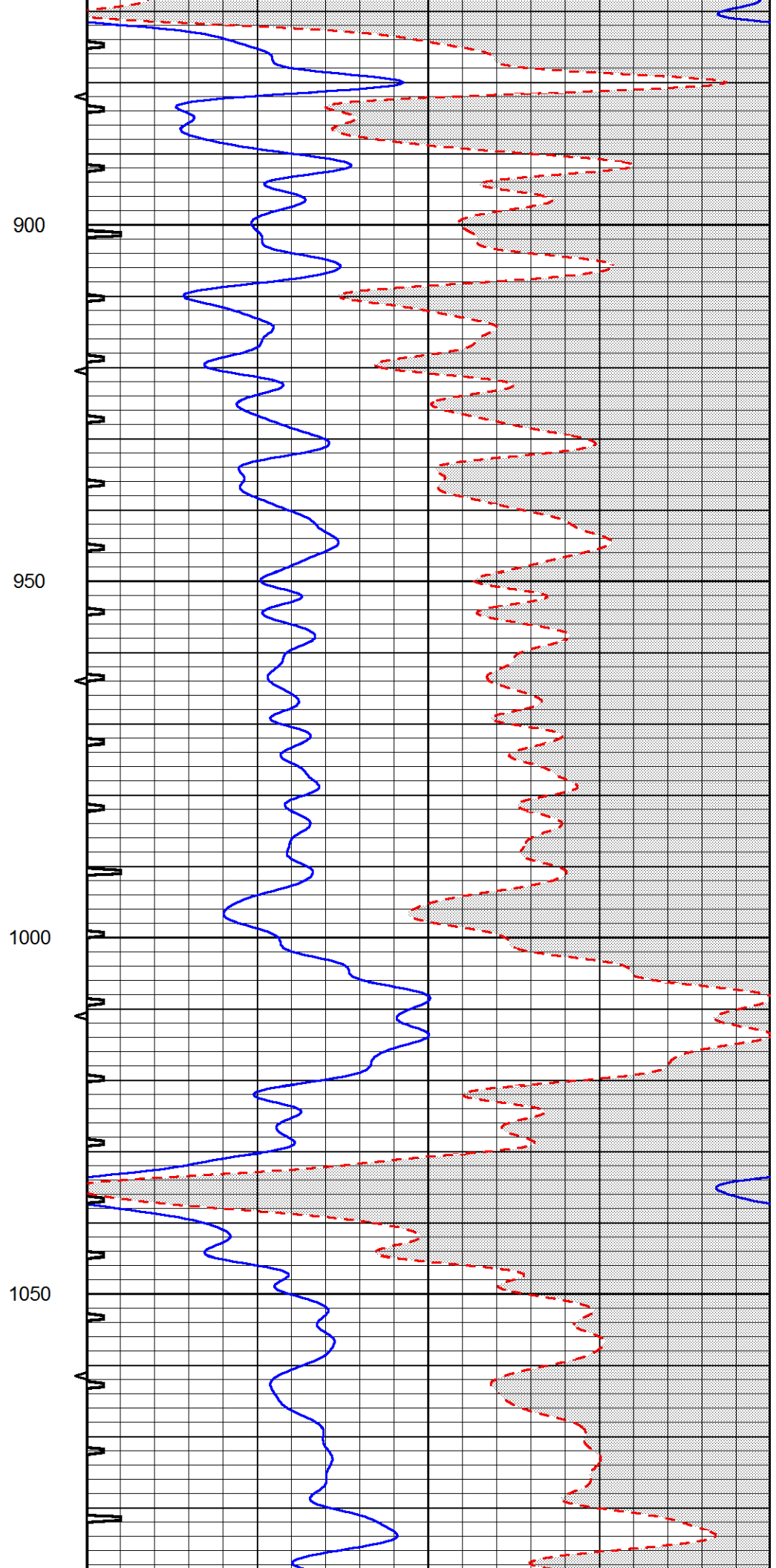
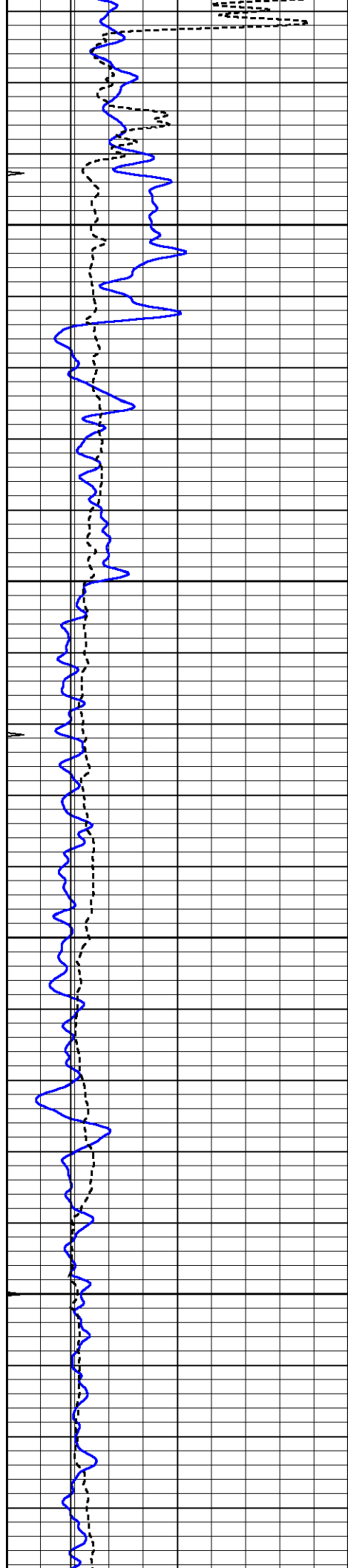
Database File 6556pe.db  
 Dataset Pathname pass7.1M  
 Presentation Format \_slt  
 Dataset Creation Wed May 25 18:08:22 2022  
 Charted by Depth in Feet scaled 1:240

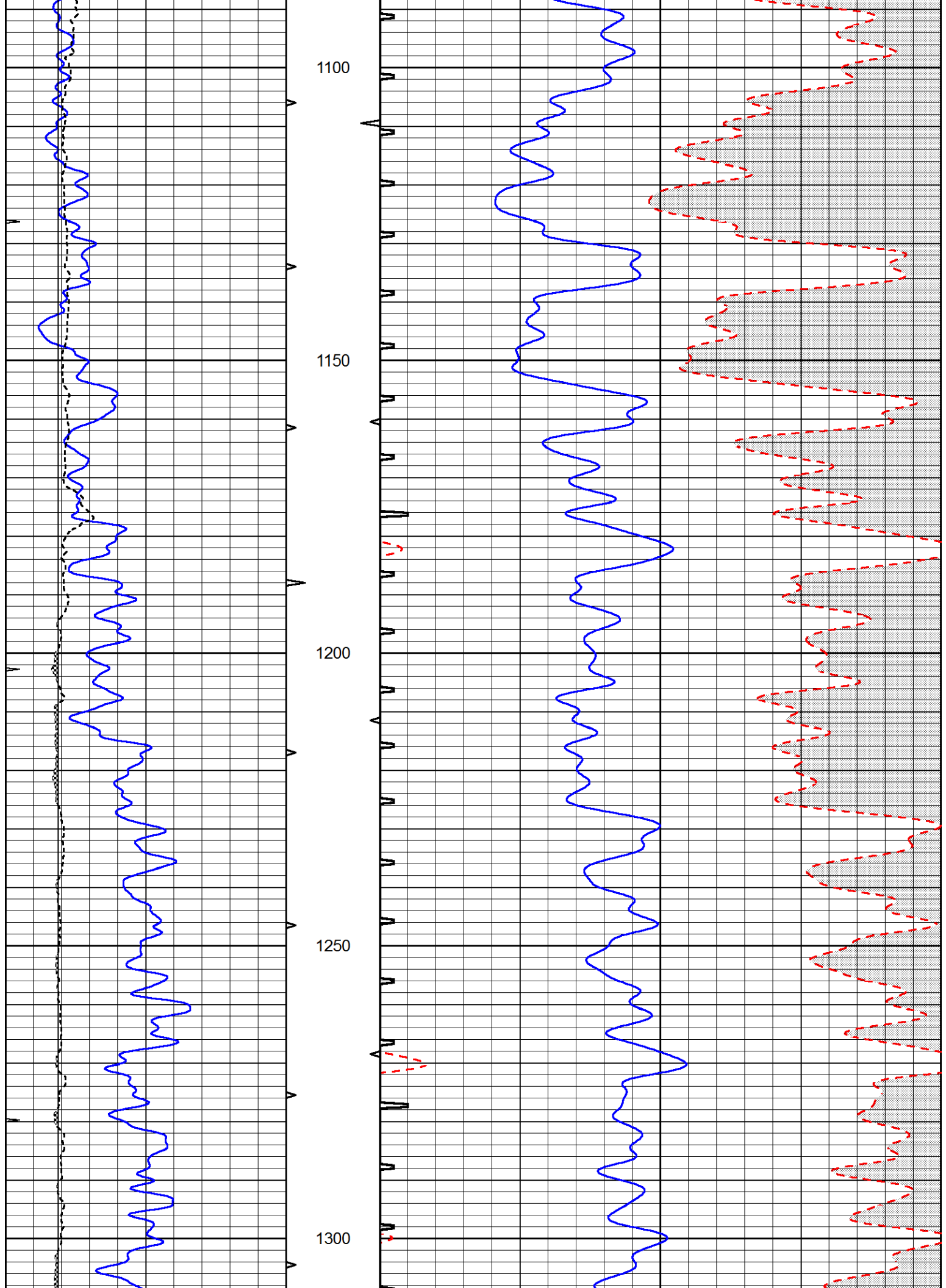
0	GAMMA RAY (GAPI)	150	ABHV	140	DELTA TIME (usec/ft)	40
0	MINMK	20	10 (ft3) 0	30	SONIC POROSITY (pu)	-10
6	MELCAL (in)	16	TBHV	0	ITT (msec)	20
			0 (ft3) 10			

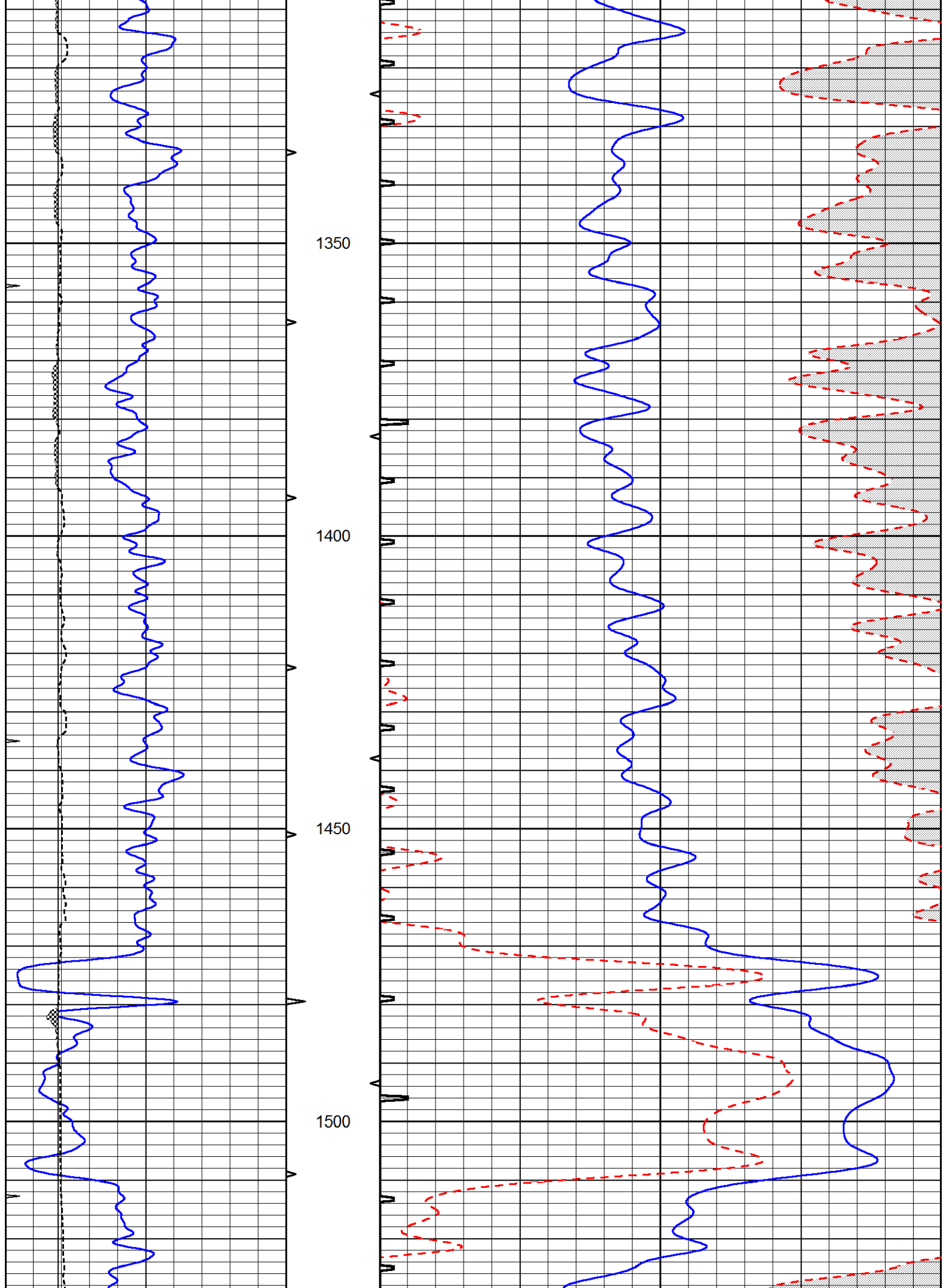


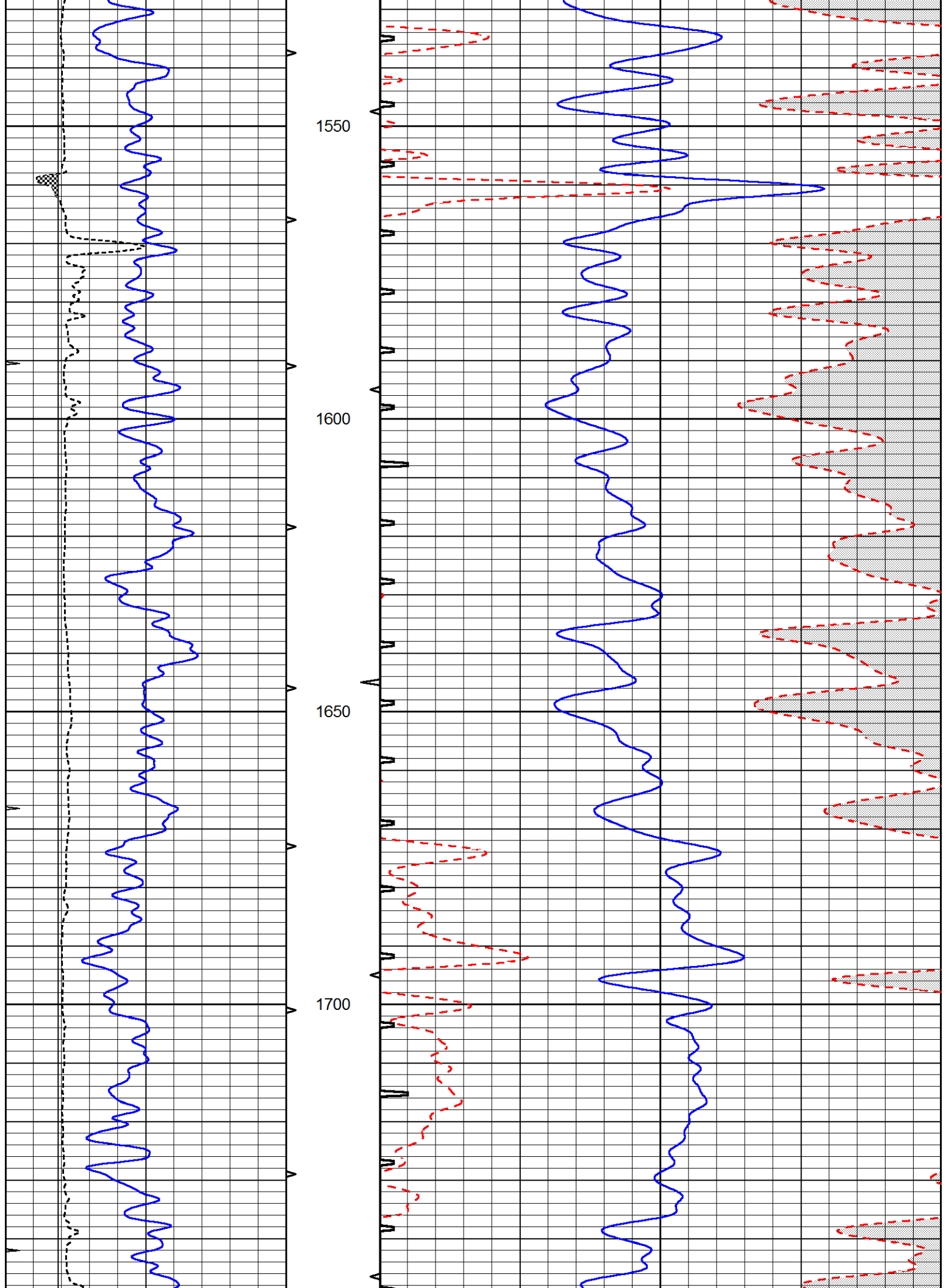


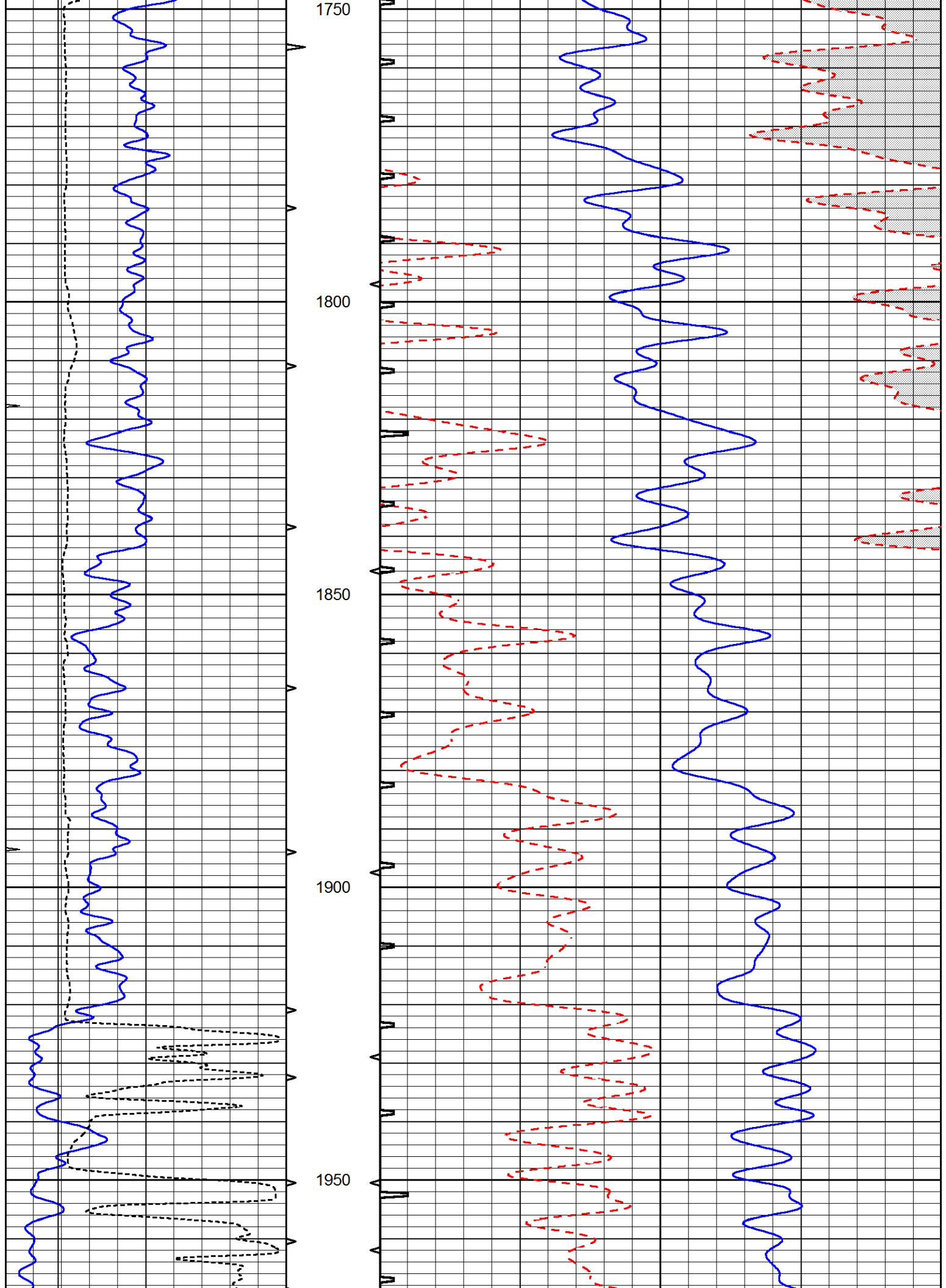


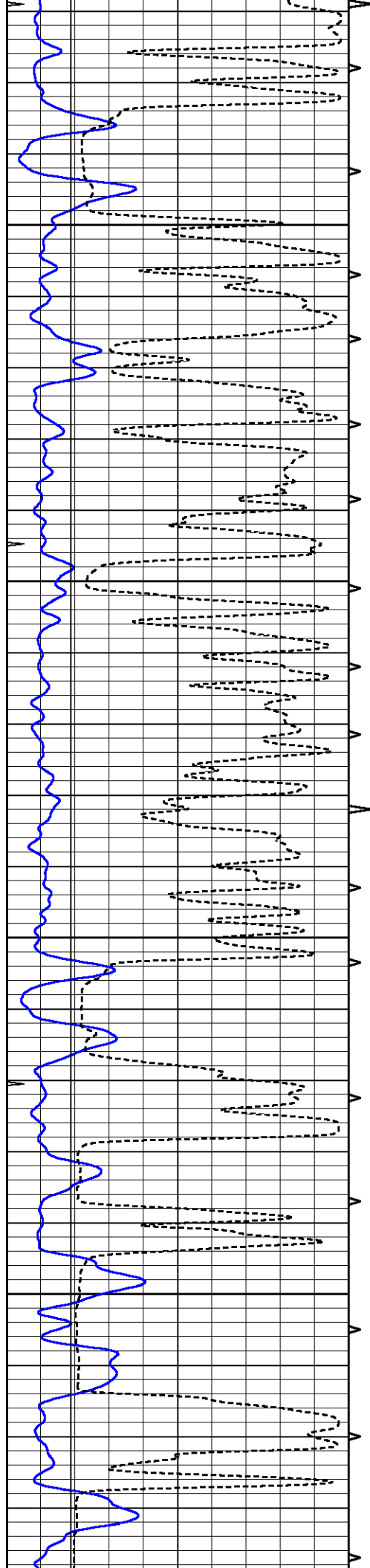










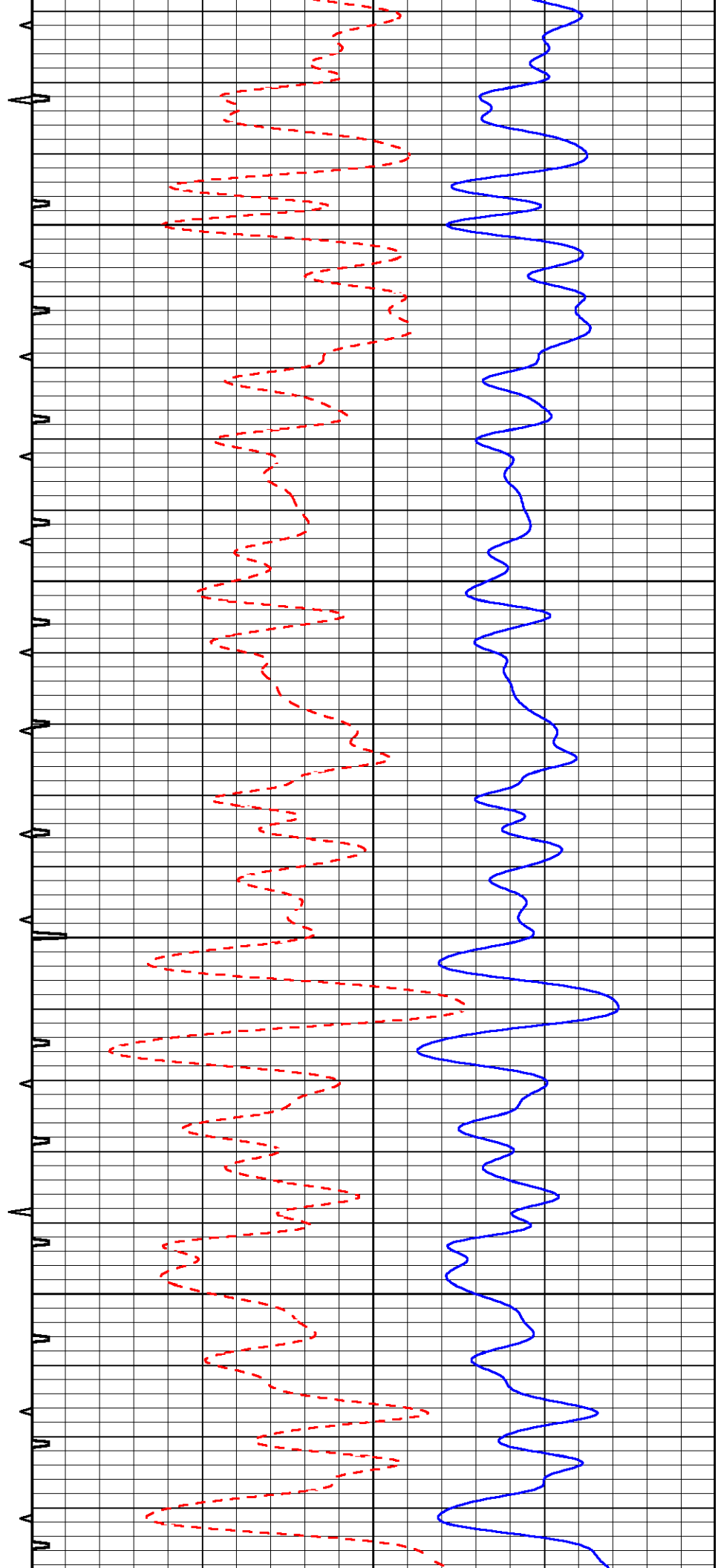


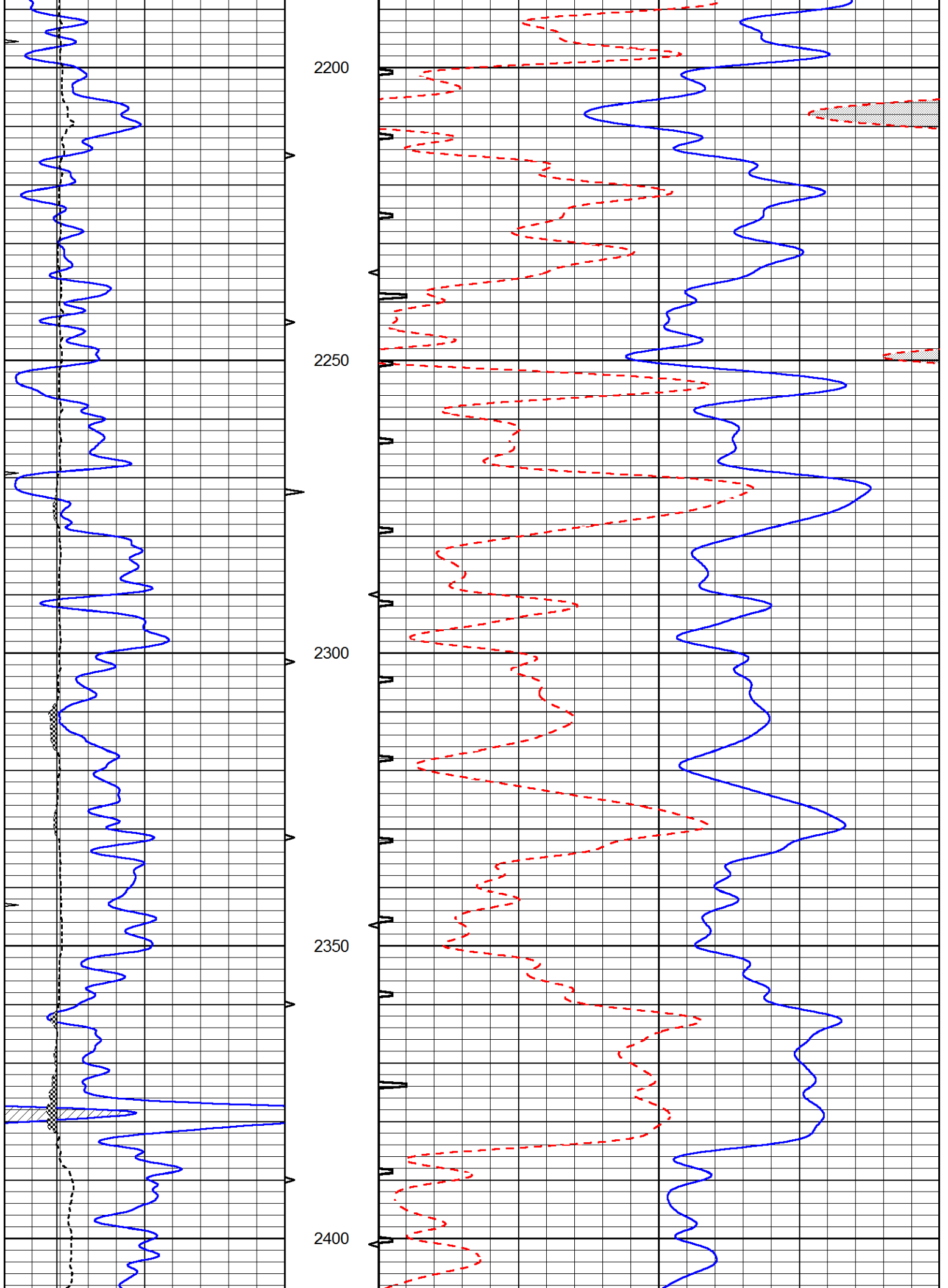
2000

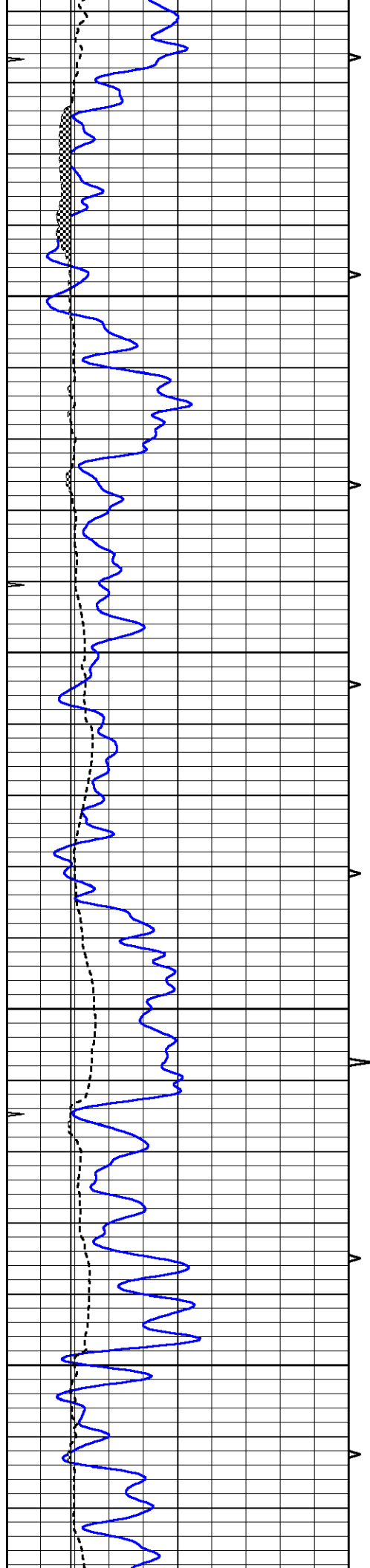
2050

2100

2150





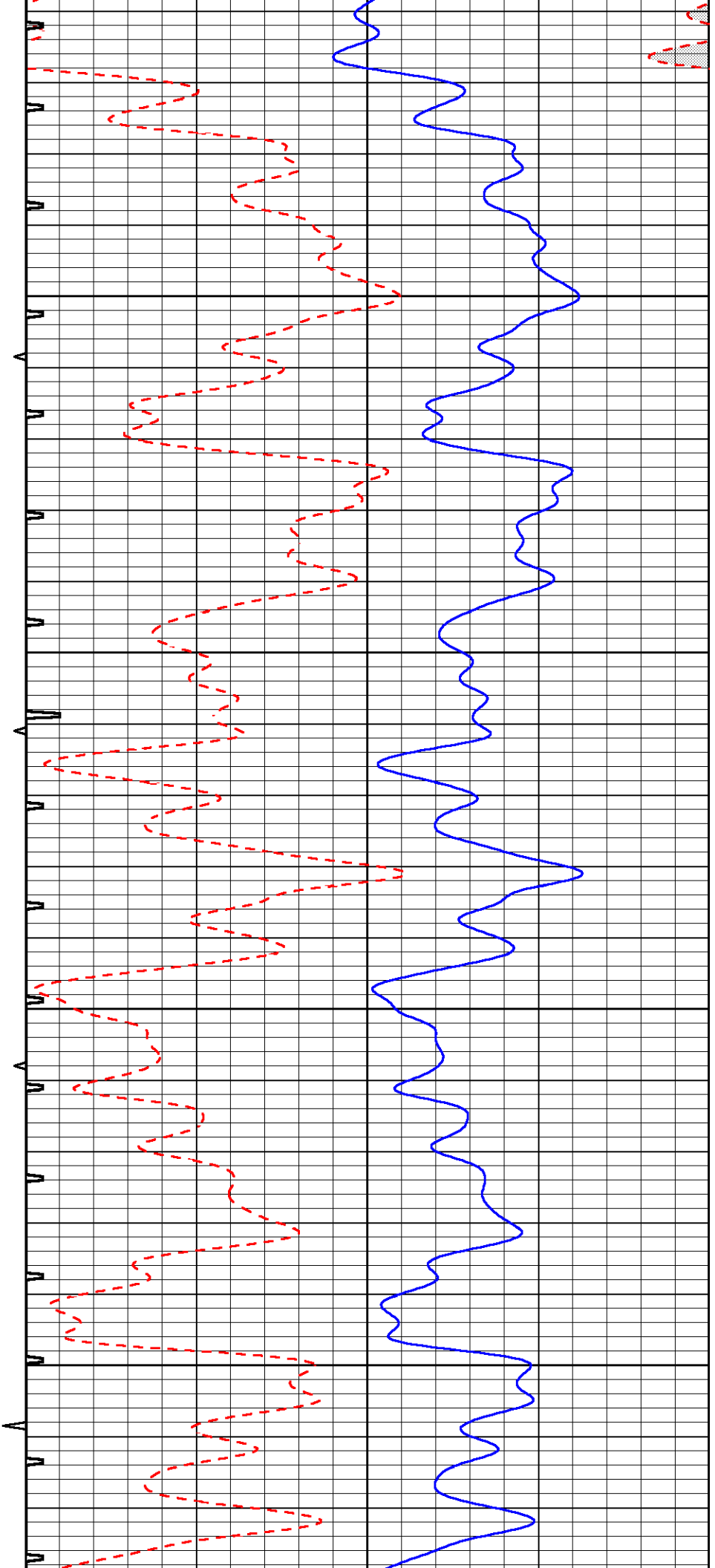


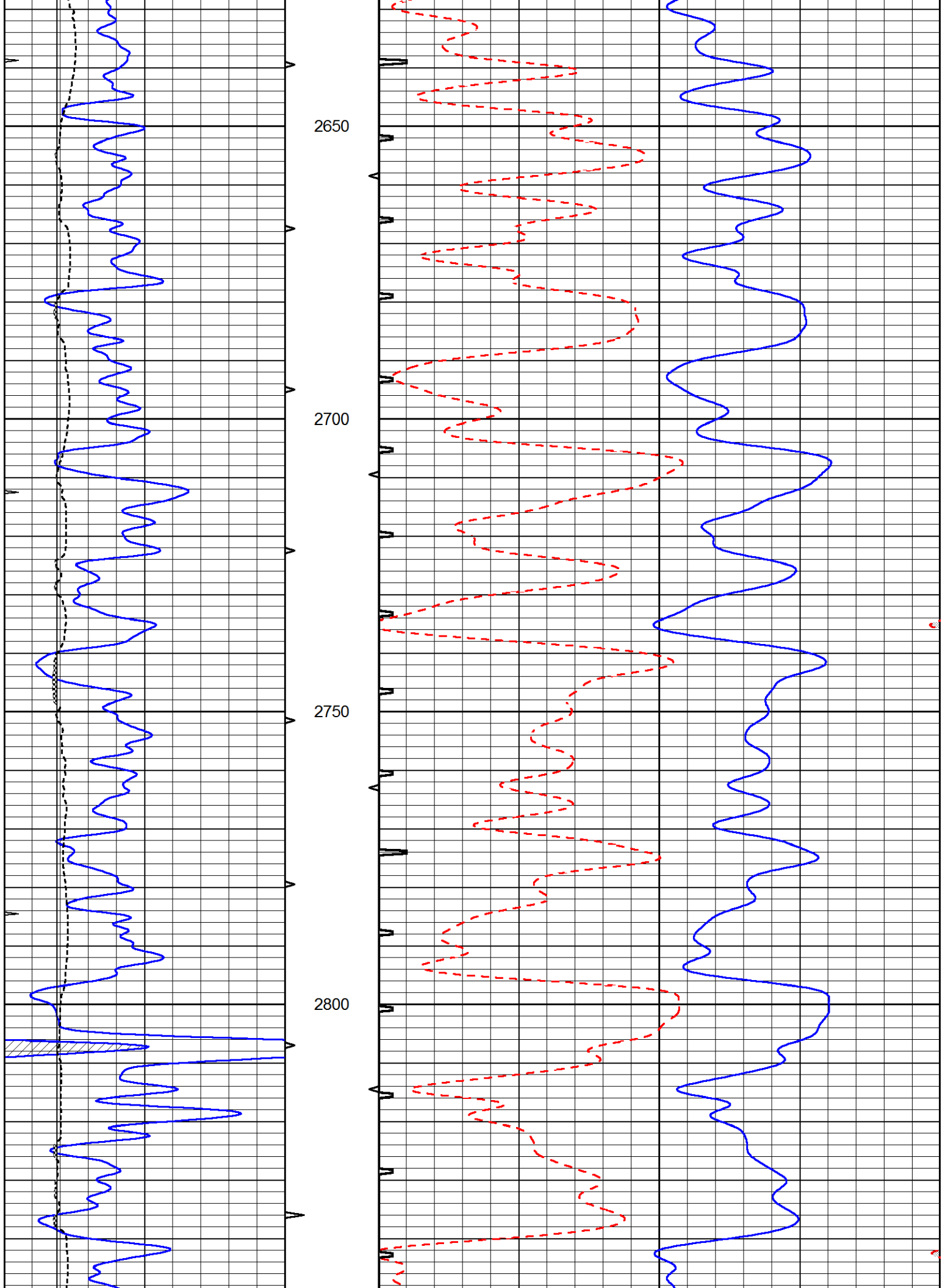
2450

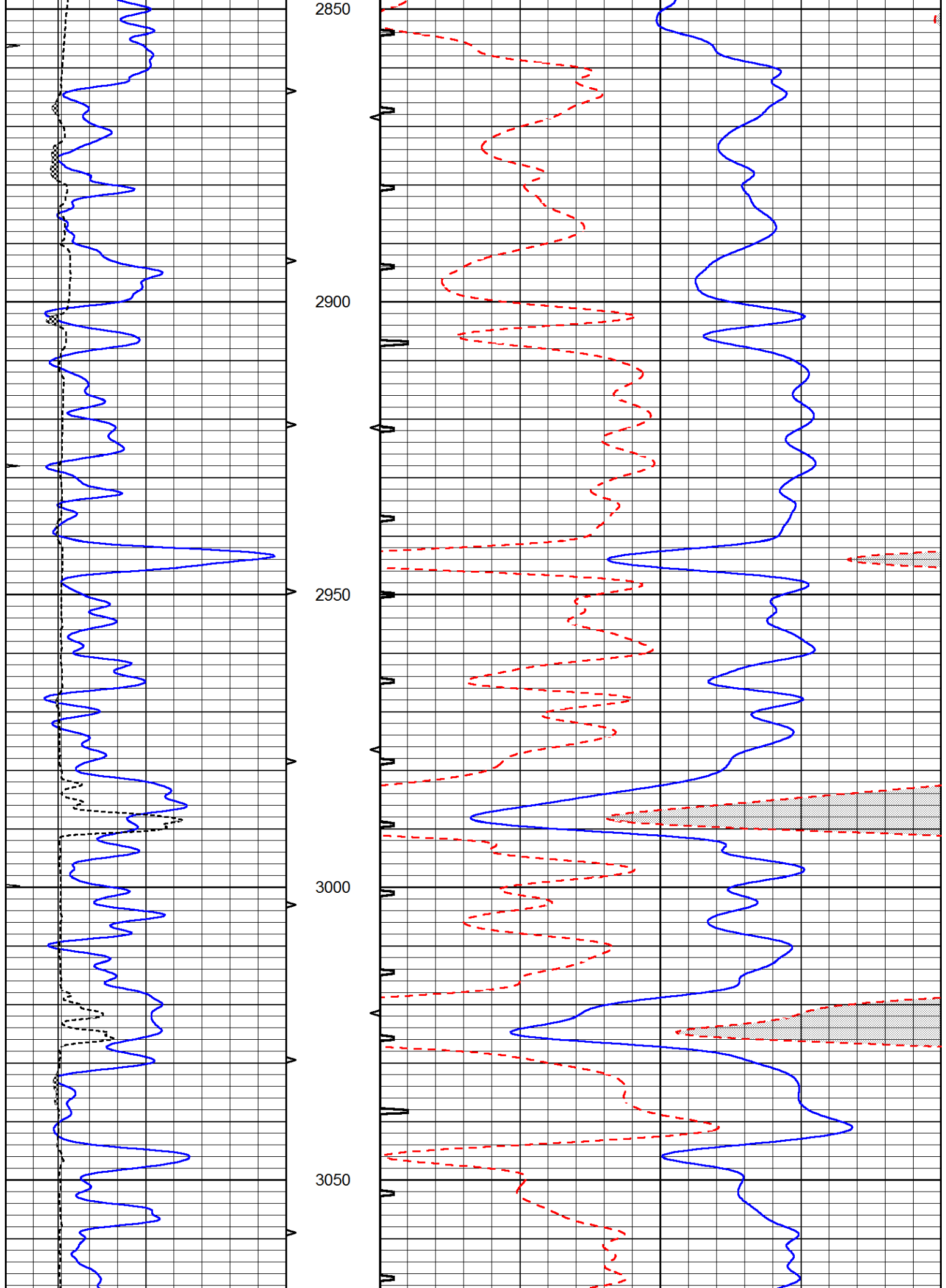
2500

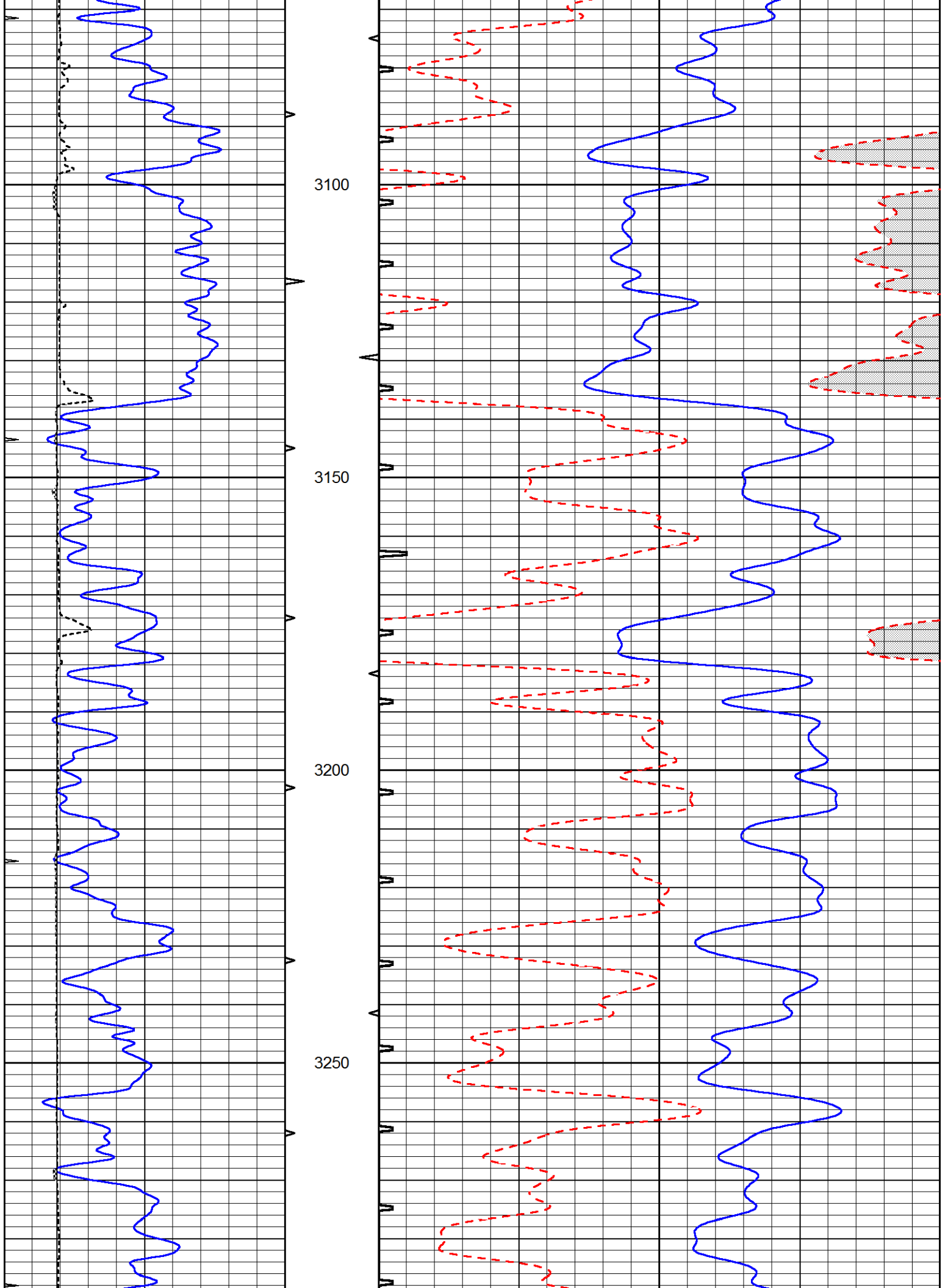
2550

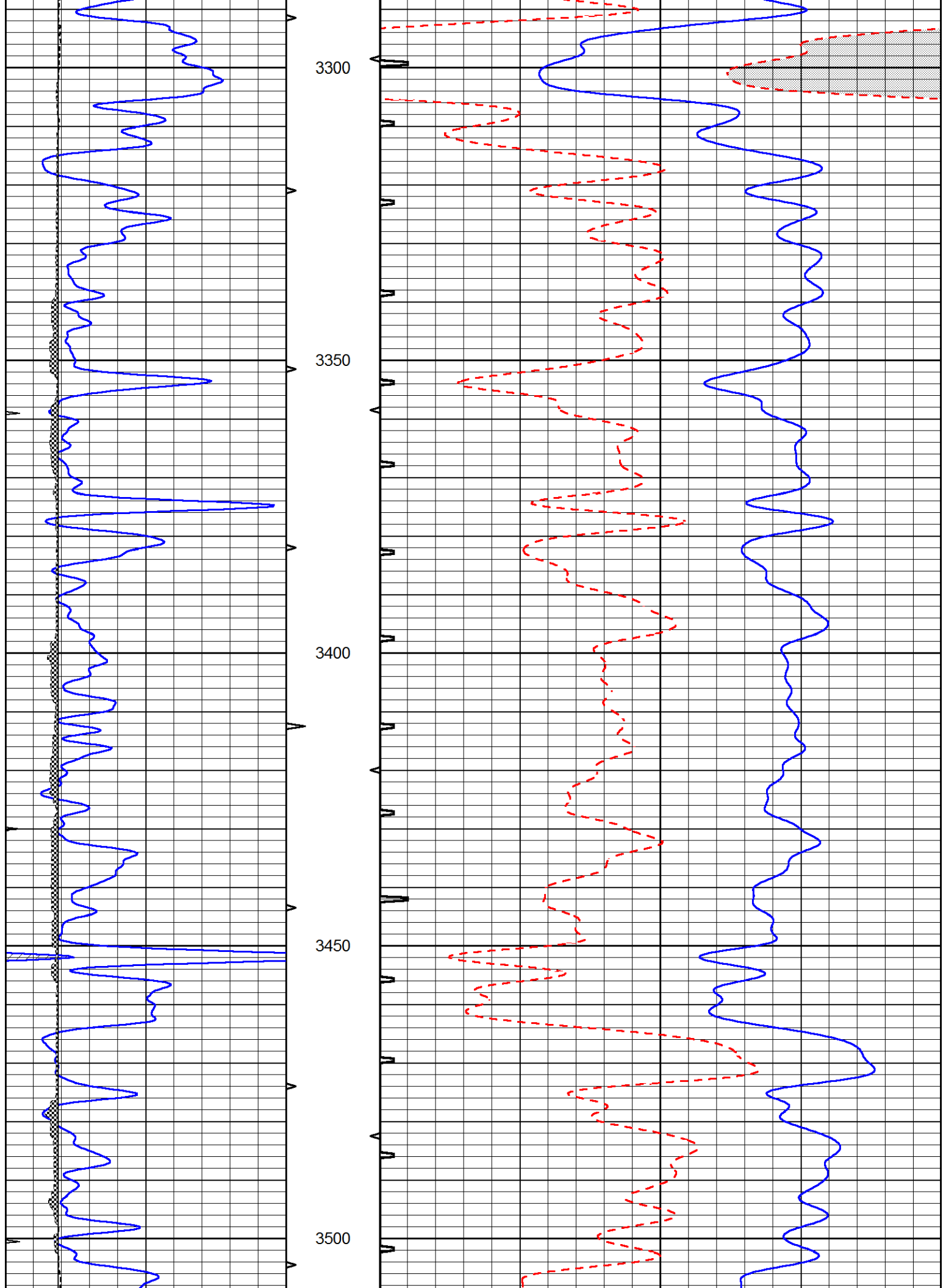
2600

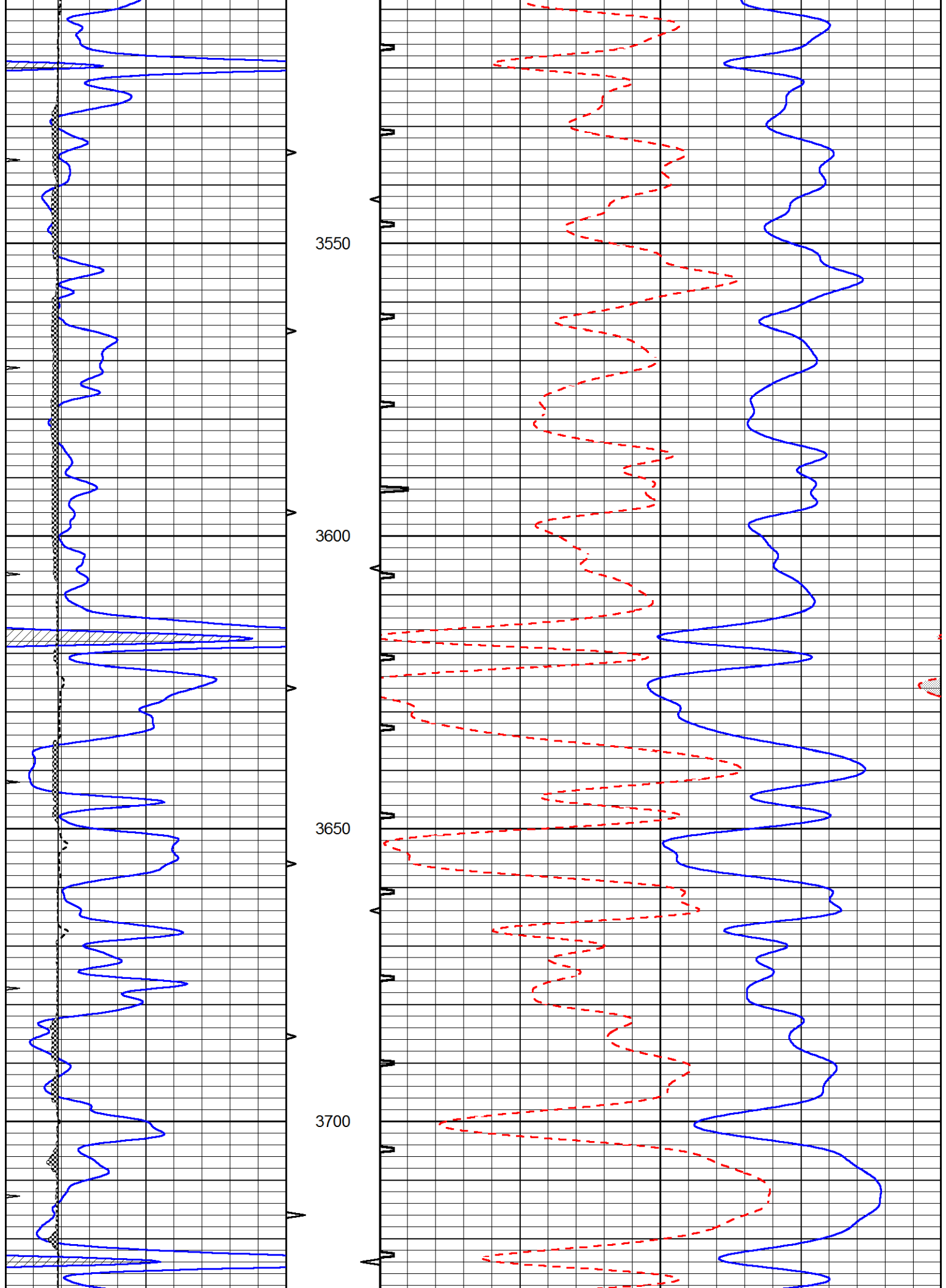


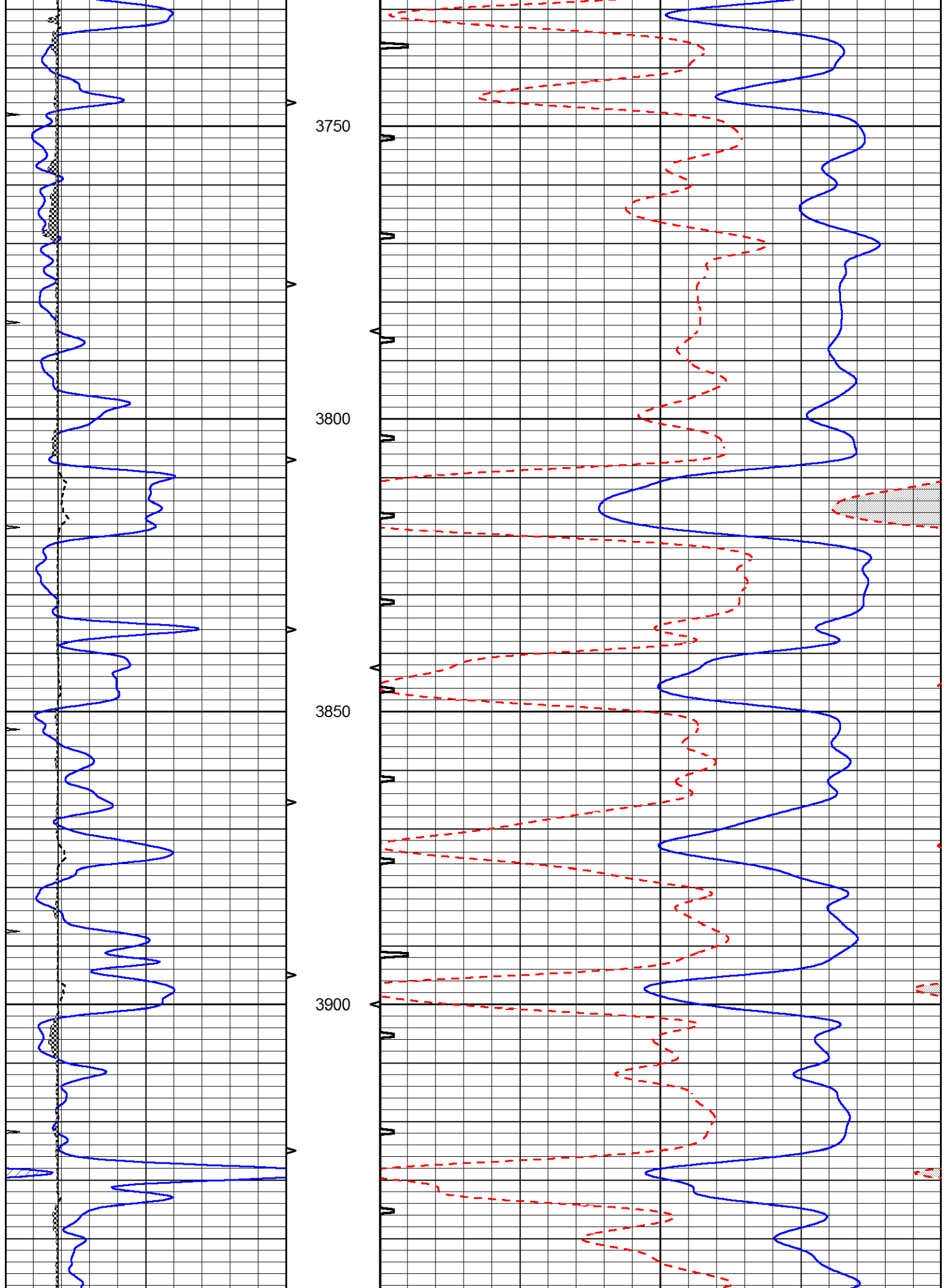


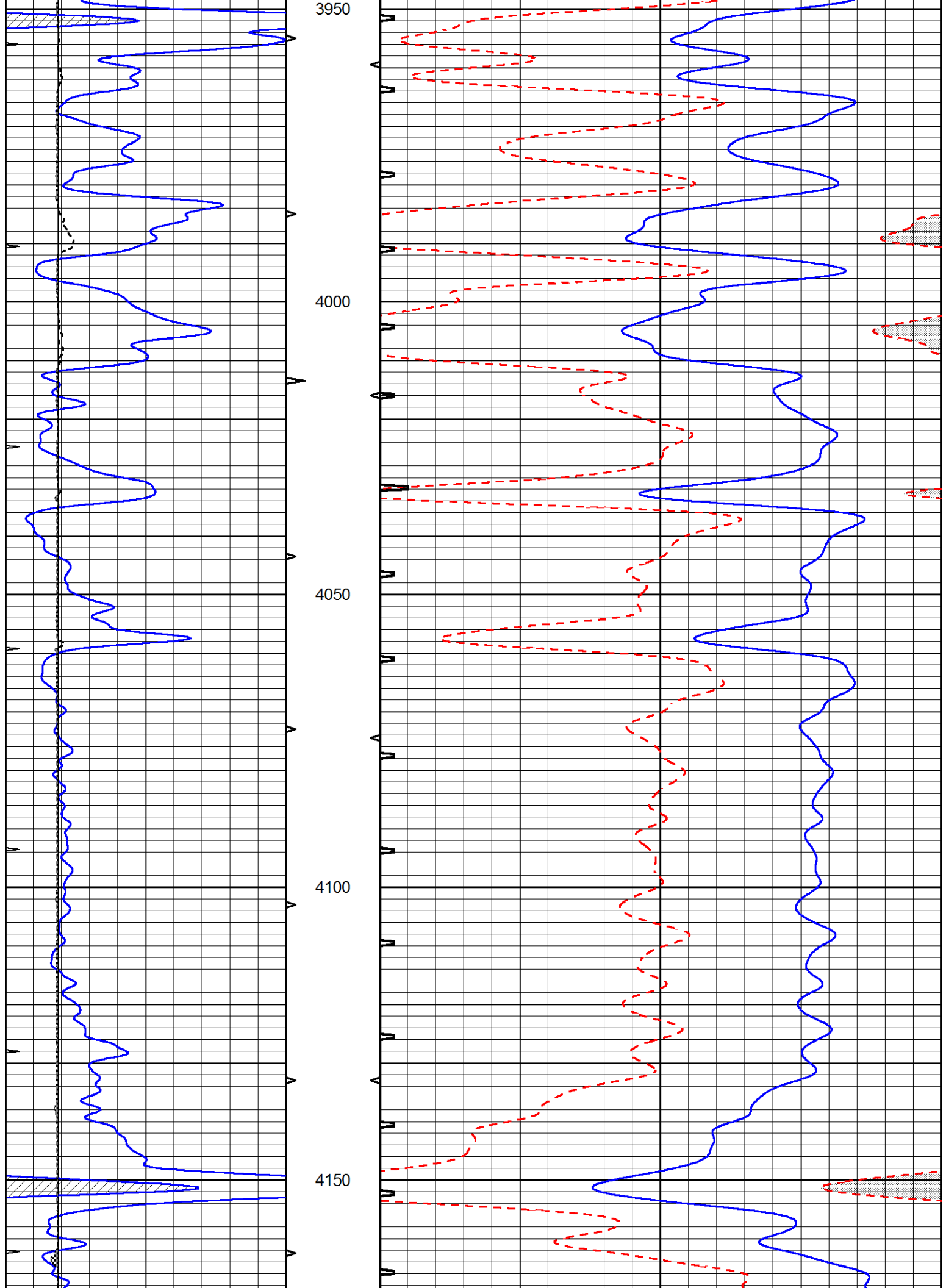


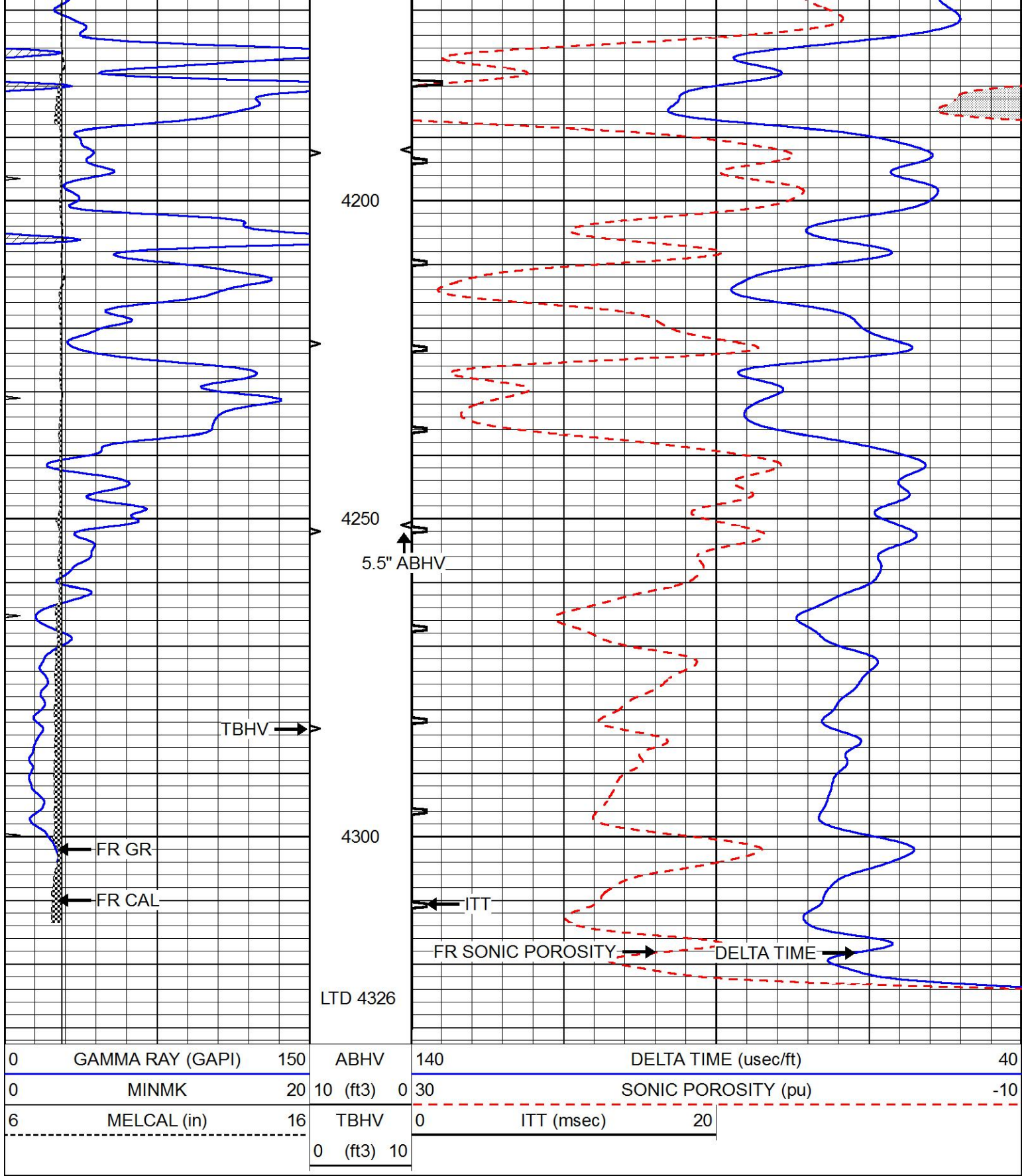












# REPEAT SECTION

0	GAMMA RAY (GAPI)	150	ABHV	140	DELTA TIME (usec/ft)	40
0	MINMK	20	10 (ft3)	0 30	SONIC POROSITY (pu)	-10
6	MELCAL (in)	16	TBHV	0	ITT (msec)	20
			0 (ft3)	10		

