

MIDWEST SURVEYS
 LOGGING - PERFORATING - CONSULTING SERVICES
 P.O. Box 68, Osawatomie, KS 66064
 913 / 755 - 2128

GAMMA RAY / NEUTRON / CCL

File No. _____

Company **Altavista Energy, Inc.**
 Well **Alexander East No. A-11**
 Field **Vernon**
 County **Woodson** State **Kansas**

Location **1365' FSU & 161' FEL**
SE-SE-N-E-SE

Other Services
 Perforate

Sec. 2
 Permanent Datum
 Log Measured From
 Drilling Measured From

Date **07-13-2022**
 Run Number **One**
 Depth Driller **1122.0**
 Depth Logger **1093.0**
 Bottom Logged Interval **1093.0**
 Top Log Interval **20.0**
 Fluid Level **Full**

Type Fluid **Water**
 Density / Viscosity **NA**
 Salinity / PPM Cl **NA**
 Max Recorded Temp **NA**
 Estimated Cement Top **0.0**
 Equipment No. **107** Location **Oswatimie**
 Recorded By **Steve Windisch**
 Witnessed By **Doug Evans**

BOREHOLE RECORD				CASINGS RECORD			
Run	BIT	FROM	TO	SIZE	WT	FROM	TO
One	9.875"	0.0	40.0	7.00"	210#	0.0	40.00
Two	5.875"	40.0	1122.0	2.875"	6.5#	0.0	1100.25
				Barite	Set	At	1099.25

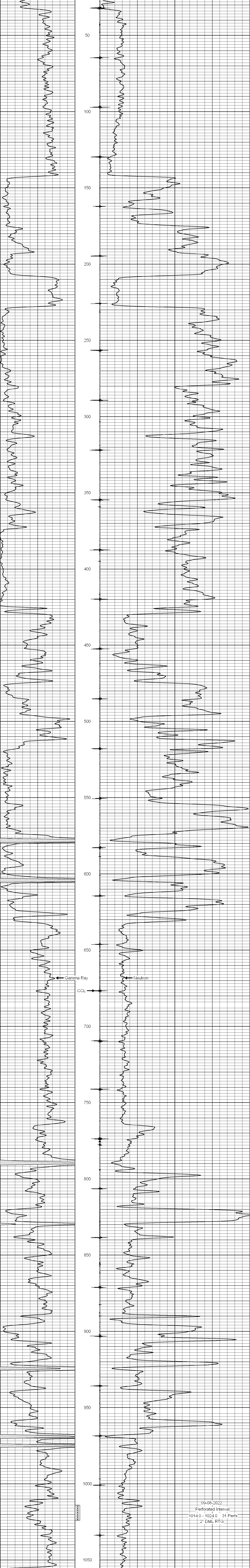
<<< Fold Here >>>

All interpretations are opinions based on inferences from electrical or other measurements and we cannot and do not guarantee the accuracy or correctness of any interpretation, and we shall not, except in the case of gross or willful negligence on our part, be liable or responsible for any loss, costs, damages, or expenses incurred or sustained by anyone resulting from any interpretation made by any of our officers, agents or employees. These interpretations are also subject to our general terms and conditions set out in our current Price Schedule.

Comments

Drilling Contractor :
McGown Drilling, Inc.

Database File: alexander east 11a.db
 Dataset Pathname: pass1
 Presentation Format: gr-n-ccl
 Dataset Creation: Wed Jul 13 13:09:22 2022 by Log SCH 111116
 Charted by:



09-08-2022
 Perforated Interval
 1014.0 - 1024.0, 31 Perfs.
 2" DML RTG