



MIDWEST SURVEYS
 LOGGING - PERFORATING - CONSULTING SERVICES
 P.O. Box 68, Osawatomie, KS 66064
 913 / 755 - 2128

GAMMA RAY / NEUTRON / CCL

File No.

Company **HB Energy, LLC**
 Well **Fasolino No. HB-6**
 Field **Prairie Center**
 County **Johnson** State **Kansas**

Location **660 FSL & 2830 FEL**
E/2-E/2-SE-SW

Other Services
 Perforate

Sec. 4
 Permanent Datum
 Log Measured From
 Drilling Measured From

Typ. 14S
 Ege. 22e
 Elevation 1000'

Date 09-07-2022
 Run Number One
 Depth Logger 917.0
 Bottom Logged Interval 897.7
 Top Log Interval 20.0
 Fluid Level Full

BORE-HOLE RECORD		CASING RECORD					
NO.	BIT	TO	FROM	TO	FROM	TO	FROM
One	9.875"	0.0	7.00"	20.0	21.0#	20.0	20.0
Two	5.785"	20.0	917.0	2.875"	6.5#	0.0	903.0

Type Fluid		Density / Viscosity		Salinity - PPM Cl		Max. Recorded Temp	
	Water		NA		NA		NA
			NA		NA		NA

Estimated Cement Top
 Equipment No. Location
 Recorded By
 Witnessed By

Isaac Burbank

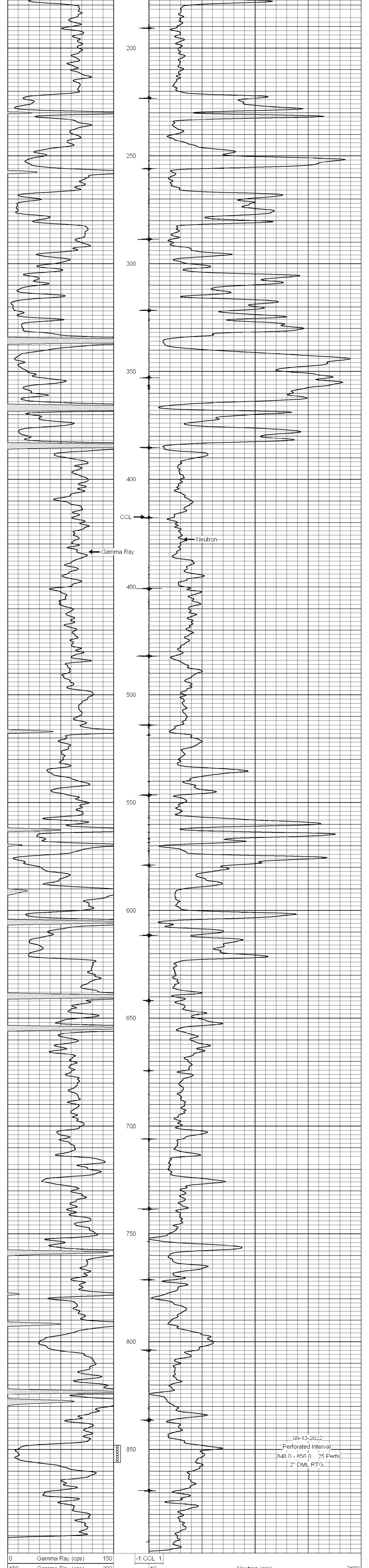
<<< Fold Here >>>

All interpretations are opinions based on inferences from electrical or other measurements and we cannot and do not guarantee the accuracy or correctness of any interpretation, and we shall not, except in the case of gross or willful negligence on our part, be liable or responsible for any loss, costs, damages, or expenses incurred or sustained by anyone resulting from any interpretation made by any of our officers, agents or employees. These interpretations are also subject to our general terms and conditions set out in our current Price Schedule.

Comments

Drilling Contractor :
 Utah Oil, LLC

Database File: fasolino 6 hb.db
 Dataset Pathname: pass1
 Presentation Format: gr-n-ccl
 Dataset Creation: Wed Sep 07 10:24:05 2022 by Log SCH 111116
 Charted by: Depth in Feet scaled 1:240



09-13-2022
 Perforated Interval
 848.0 - 856.0 25 Perfs.
 2" DML RTG