



LITHO DENSITY  
NEUTRON  
LOG

Company	SCOUT ENERGY PARTNERS	Company	SCOUT ENERGY PARTNERS
Well	COLLINGWOOD B-4 ATU-444	Well	COLLINGWOOD B-4 ATU-444
Field	HUGOTON-PANOMA	Field	HUGOTON-PANOMA
County	STANTON	County	STANTON
State	KS	State	KS
Location:	API #: 15-187-21355		Other Services
	NENE/ENE 170' FNL & 230' FEL		DIL SON
Permanent Datum	SEC 28 TWP 30S RGE 39W	Elevation	3194
Log Measured From	Ground Level	Elevation	3194
Drilling Measured From	KB 5' AGL	Elevation	3199
	KB	Elevation	3197
		Elevation	G.L. 3194

Date	7/23/22
Run Number	One
Depth Driller	2951
Depth Logger	2951
Bottom Logged Interval	2931
Top Log Interval	600
Casing Driller	8 5/8" @ 614'
Casing Logger	614
Bit Size	7 7/8"
Type Fluid in Hole	Chemical
Density / Viscosity	9.3/38
pH / Fluid Loss	9.0/7.2
Source of Sample	Pit
Rm @ Meas. Temp	.85@70degf
Rmf @ Meas. Temp	.64@70degf
Rmc @ Meas. Temp	1.02@70degf
Source of Rmf / Rmc	Calculated
Rm @ BHT	.60@98degf
Time Circulation Stopped	1:00 A.M.
Time Logger on Bottom	3:30 A.M.
Maximum Recorded Temperature	98degf
Equipment Number	T605
Location	Hays, KS
Recorded By	GUS PFANENSTIEL
Witnessed By	JORDAN NORET

<<< Fold Here >>>

All interpretations are opinions based on inferences from electrical or other measurements and we cannot and do not guarantee the accuracy or correctness of any interpretation, and we shall not, except in the case of gross or willful negligence on our part, be liable or responsible for any loss, costs, damages, or expenses incurred or sustained by anyone resulting from any interpretation made by any of our officers, agents or employees. These interpretations are also subject to our general terms and conditions set out in our current Price Schedule.

Comments

BIG BOW SOUTH TO 23 RD. 1 WEST.

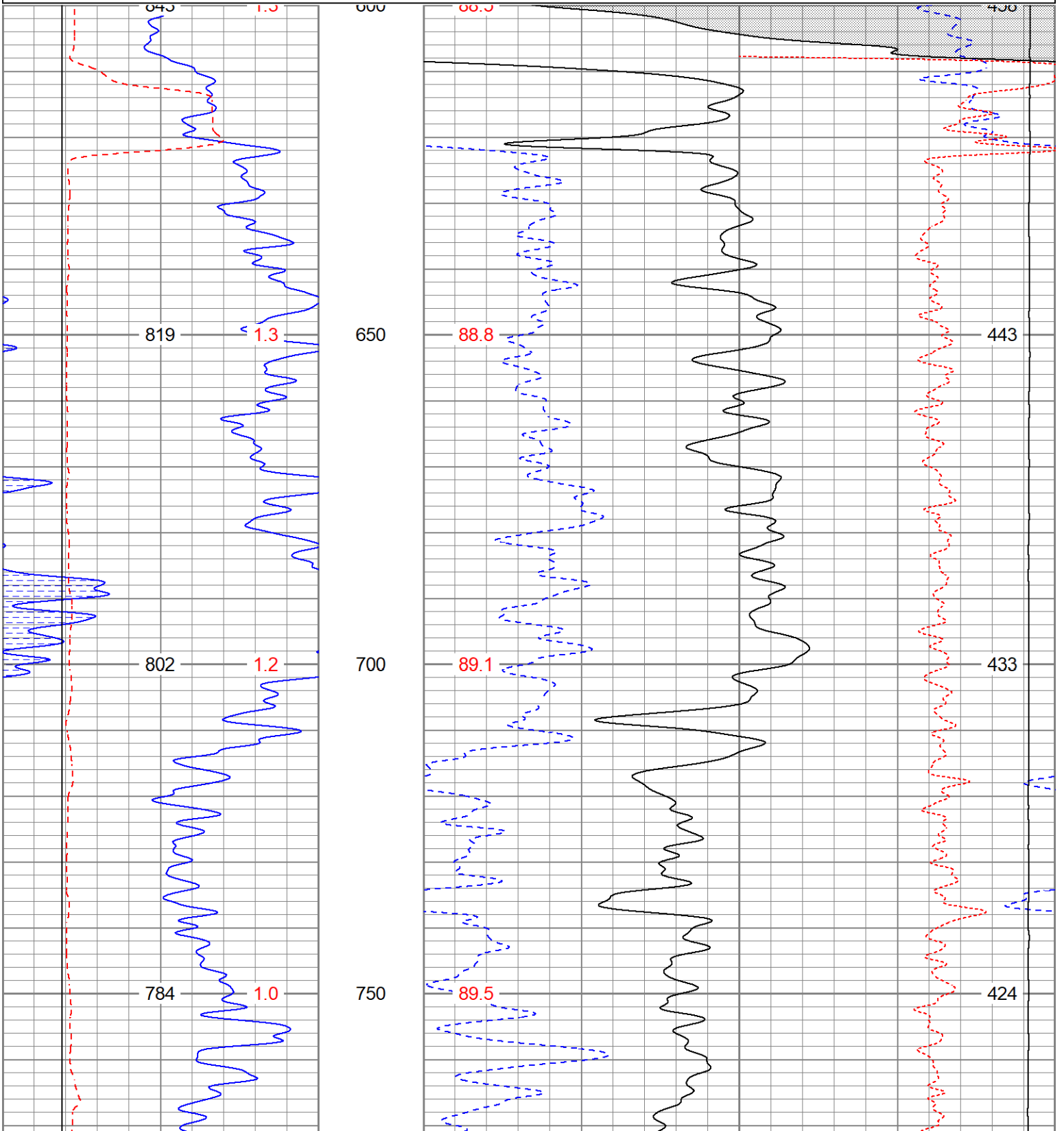
Thank You for using Gemini Wireline LLC  
785-625-1182

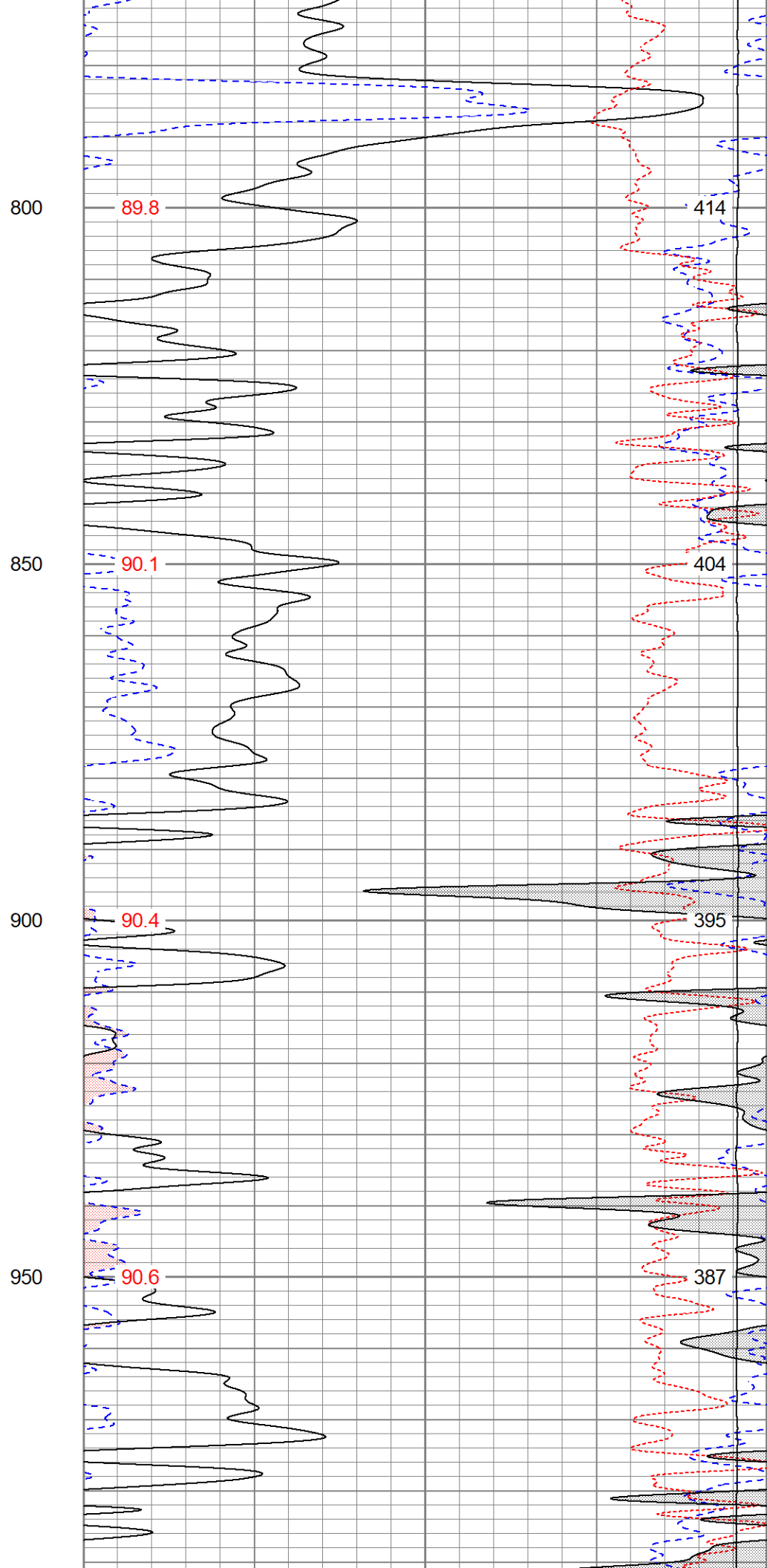
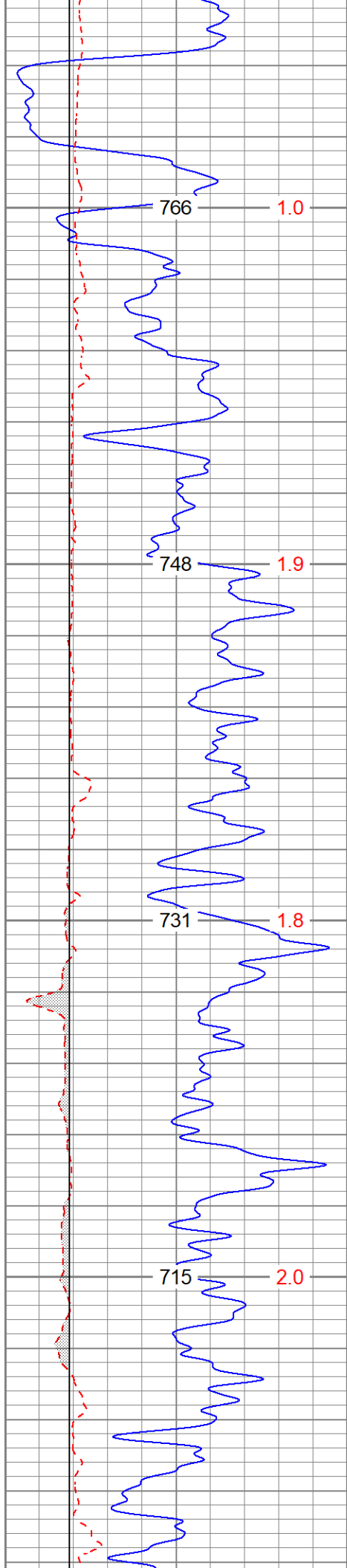


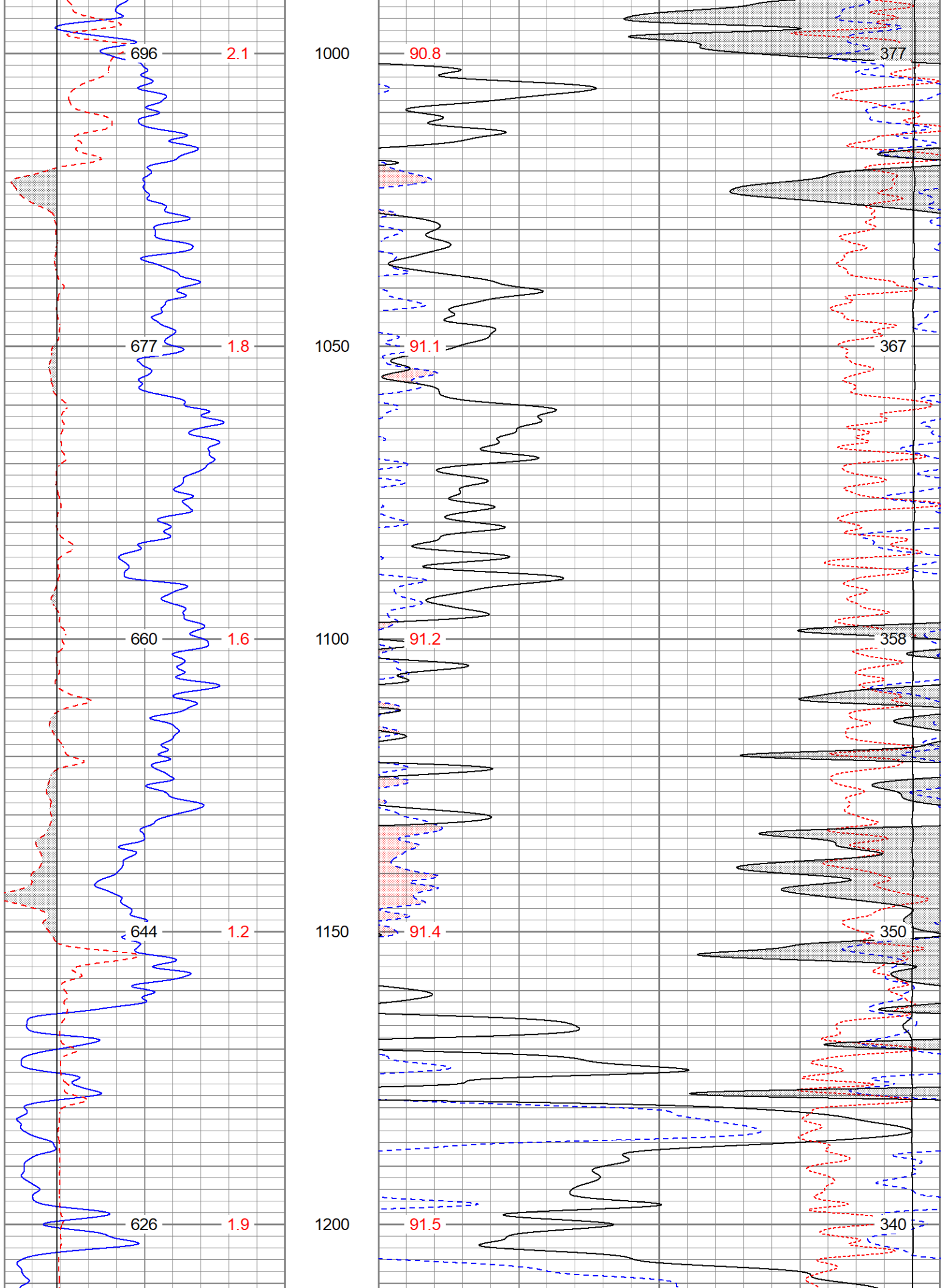
MAIN PASS

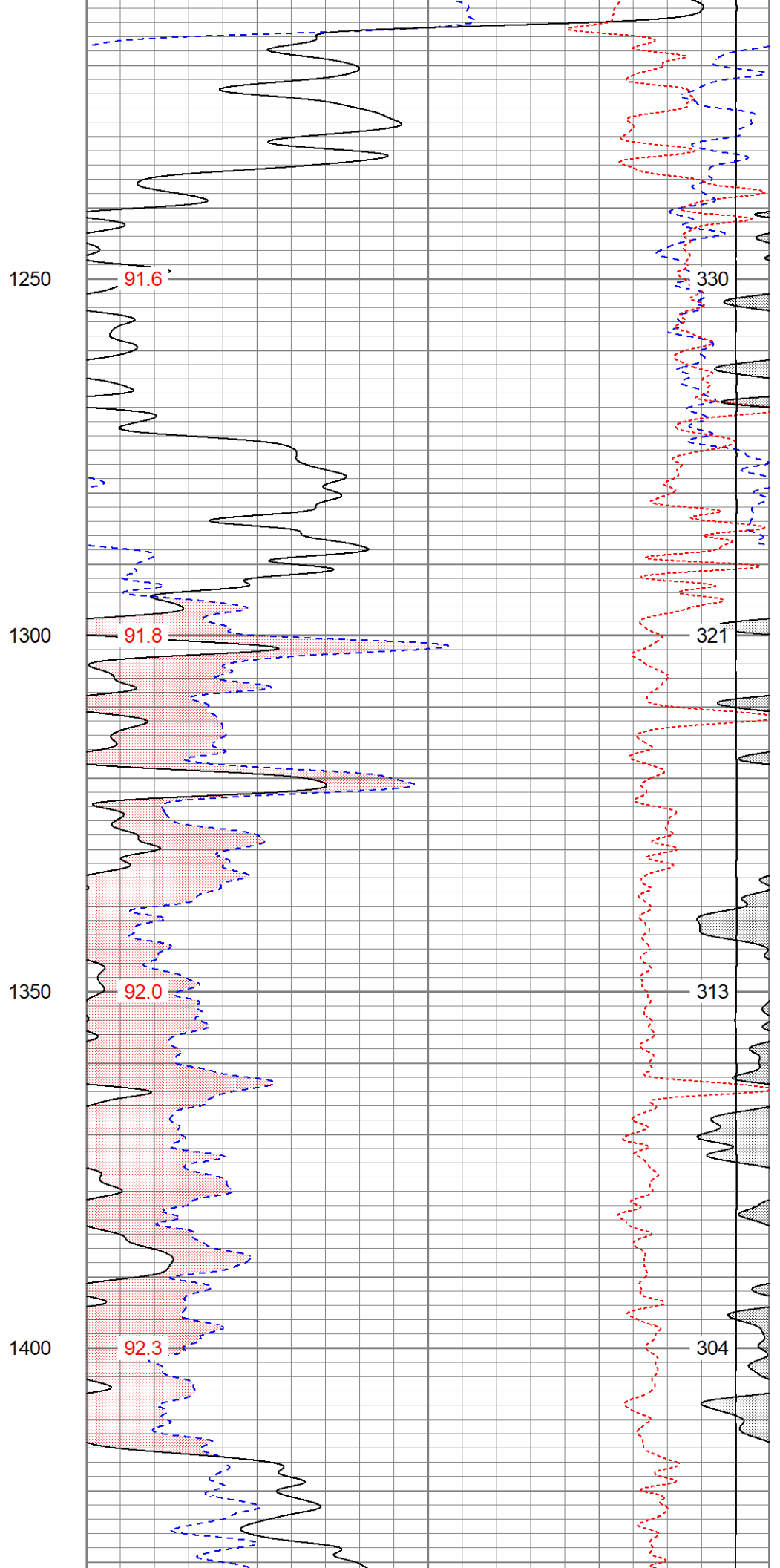
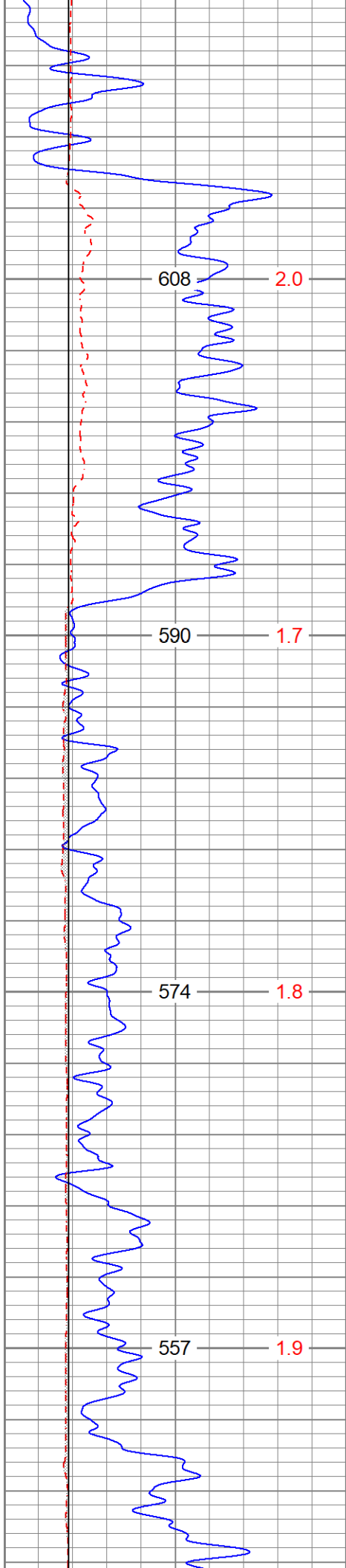
Database File      secollingwoodb4atu444oh.db  
 Dataset Pathname    pass4.1  
 Presentation Format   digital\_kcdnl  
 Dataset Creation     Sat Jul 23 05:42:26 2022  
 Charted by            Depth in Feet scaled 1:240

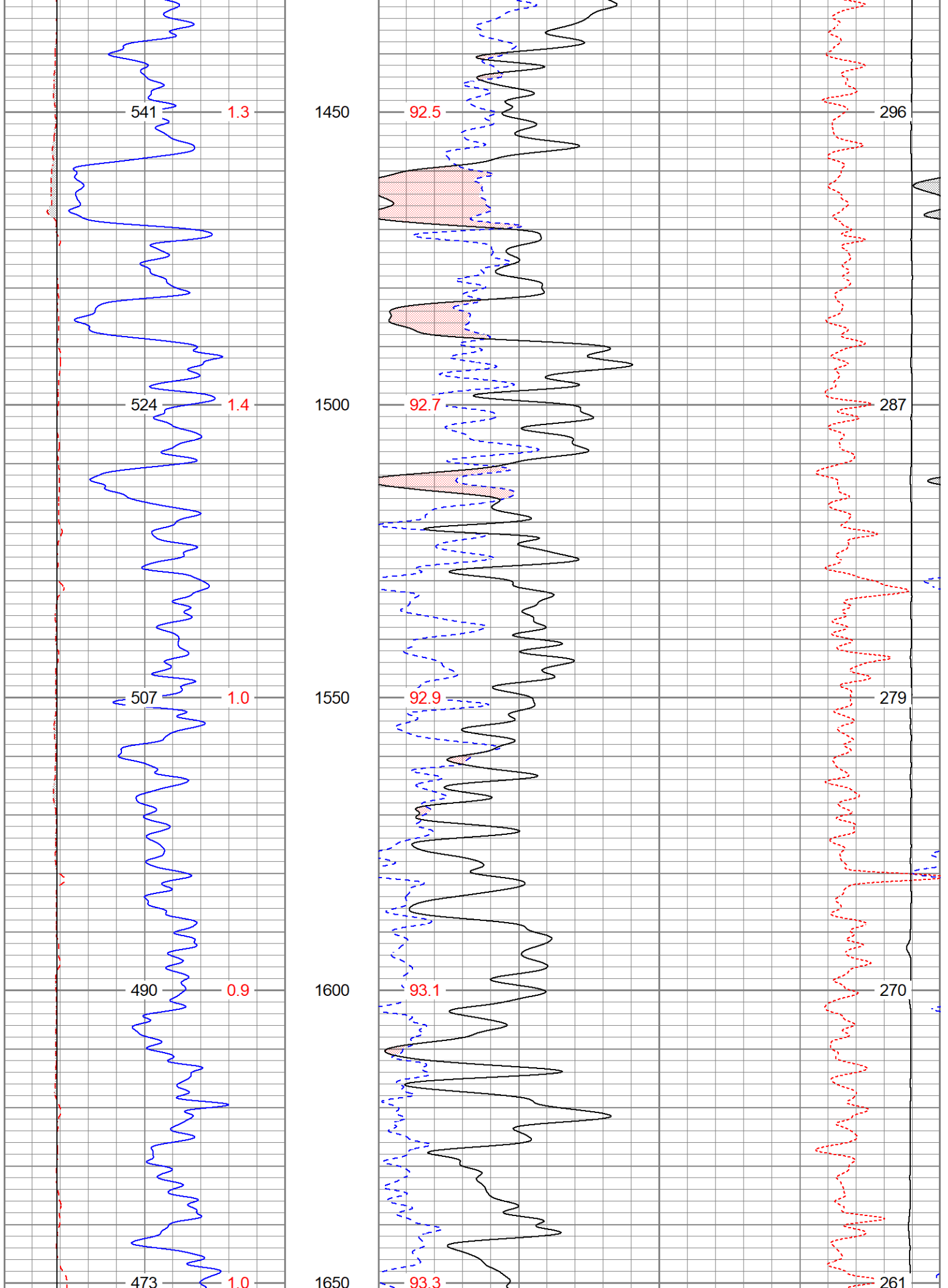
0	GR (GAPI)	150	30	NPOR (pu)	-10
6	DCAL (in)	16	30	DPOR (pu)	-10
6	BOREID (in)	16	70	DPOR (pu)	30
	TBHV (ft3)	DEVI (deg)	TEMP (degF)	-0.25	RHOC (g/cc) 0.25
				8000	LTEN (lb) 0
					ABHV (ft3)

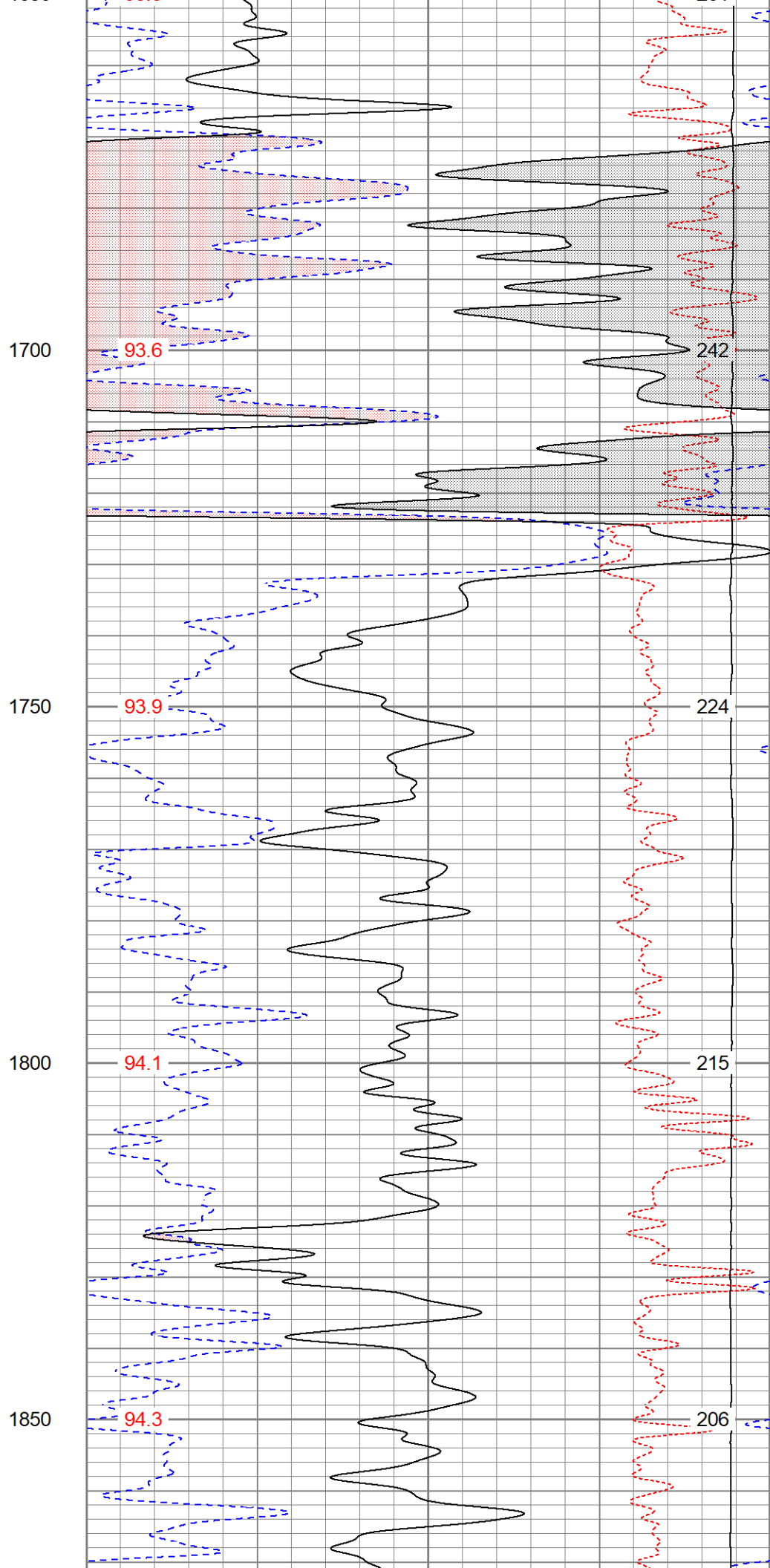
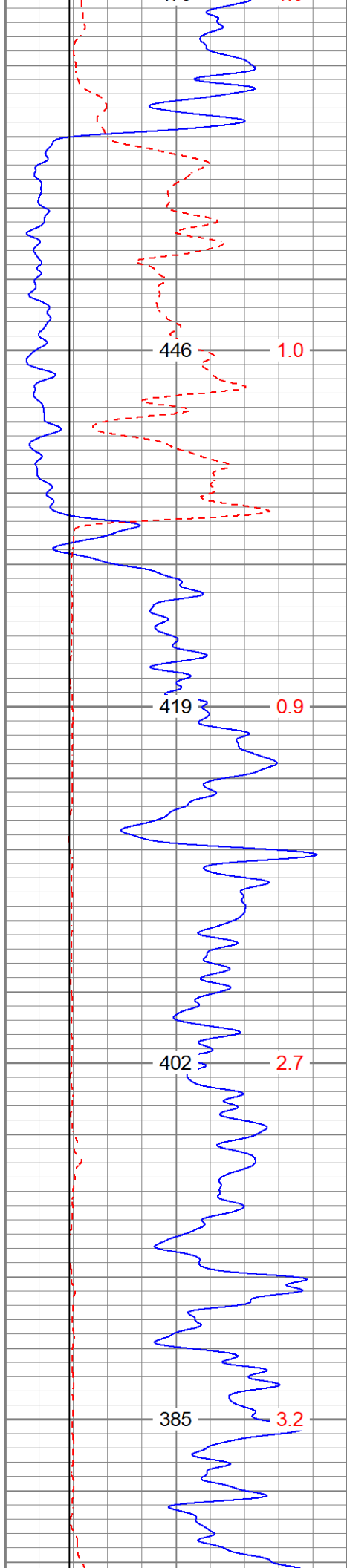


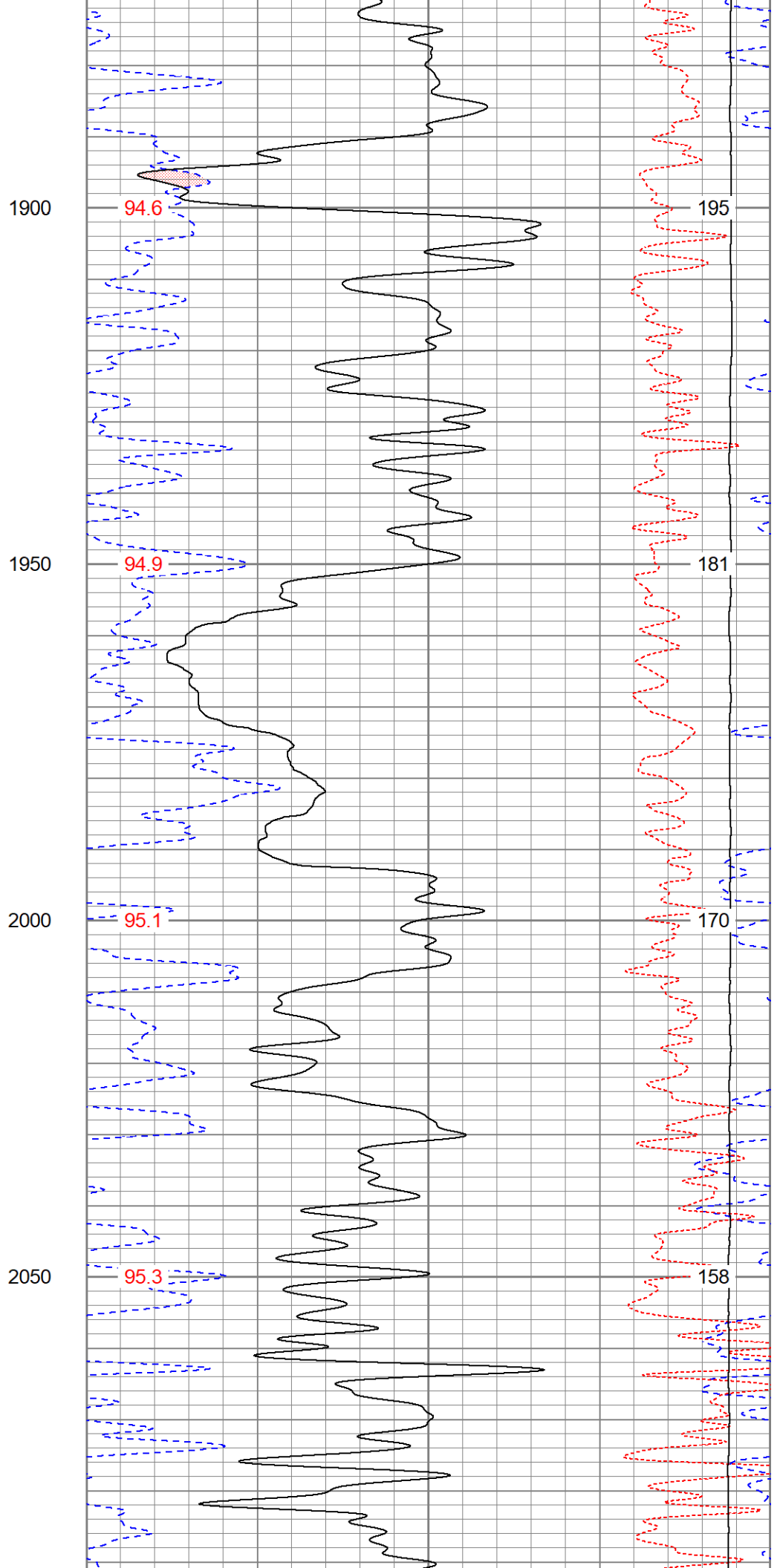
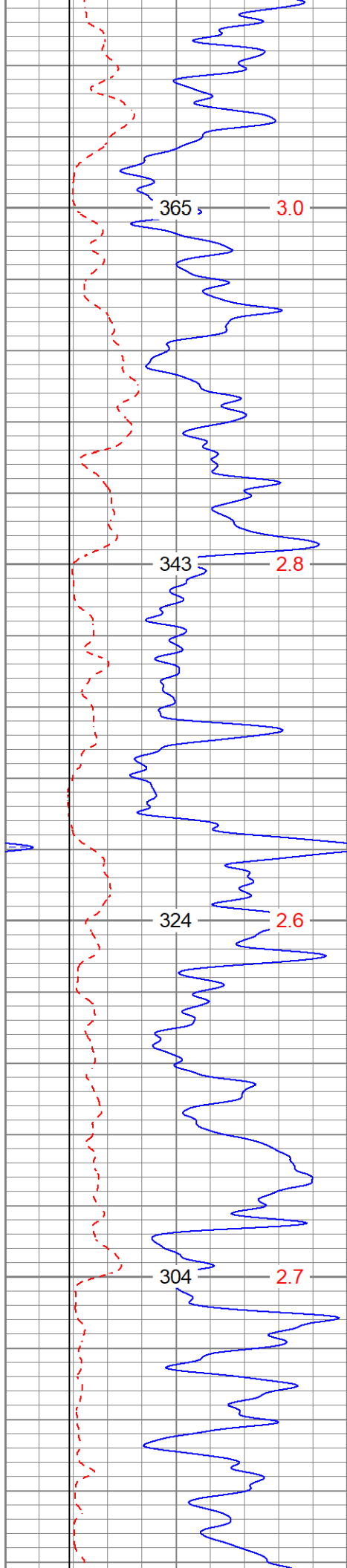


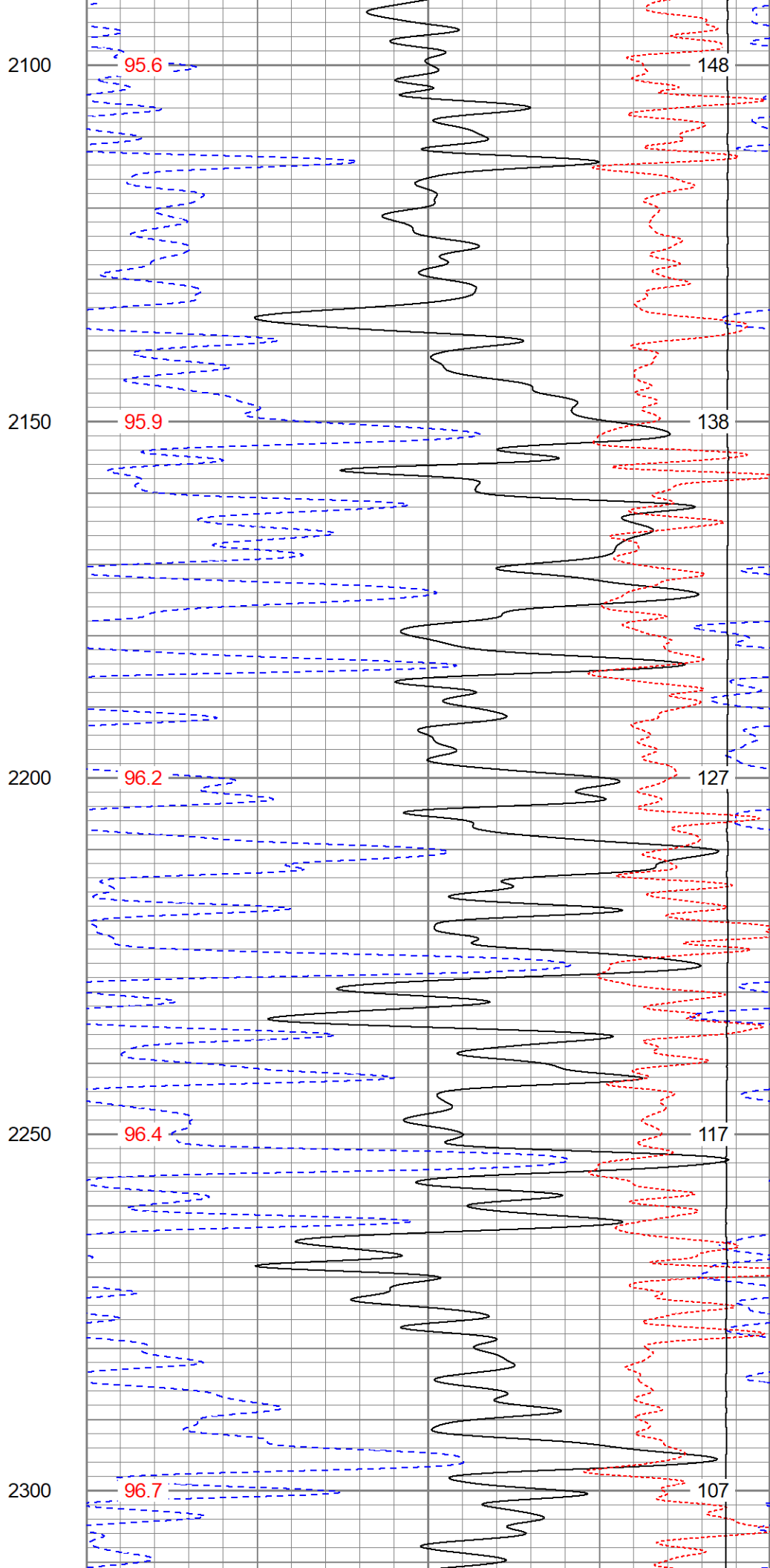
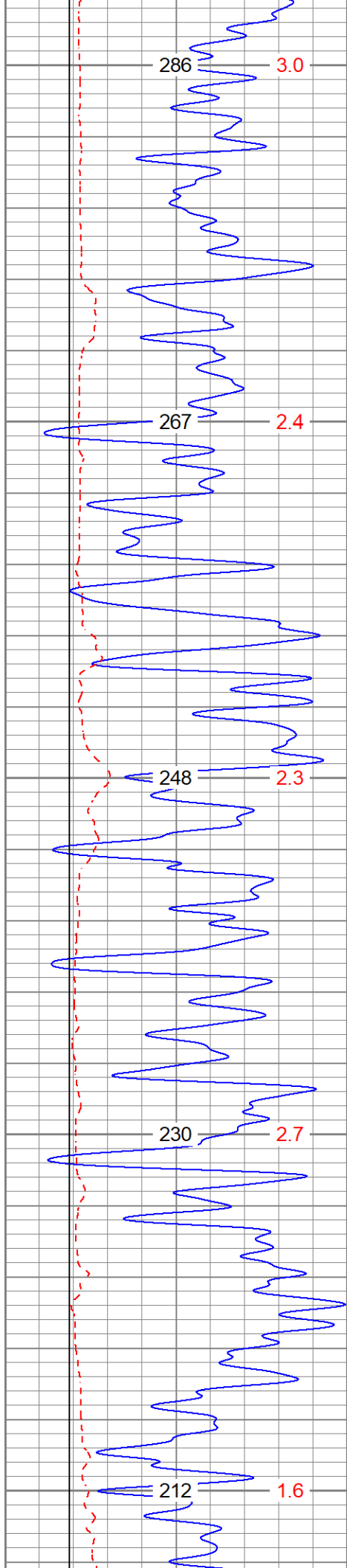




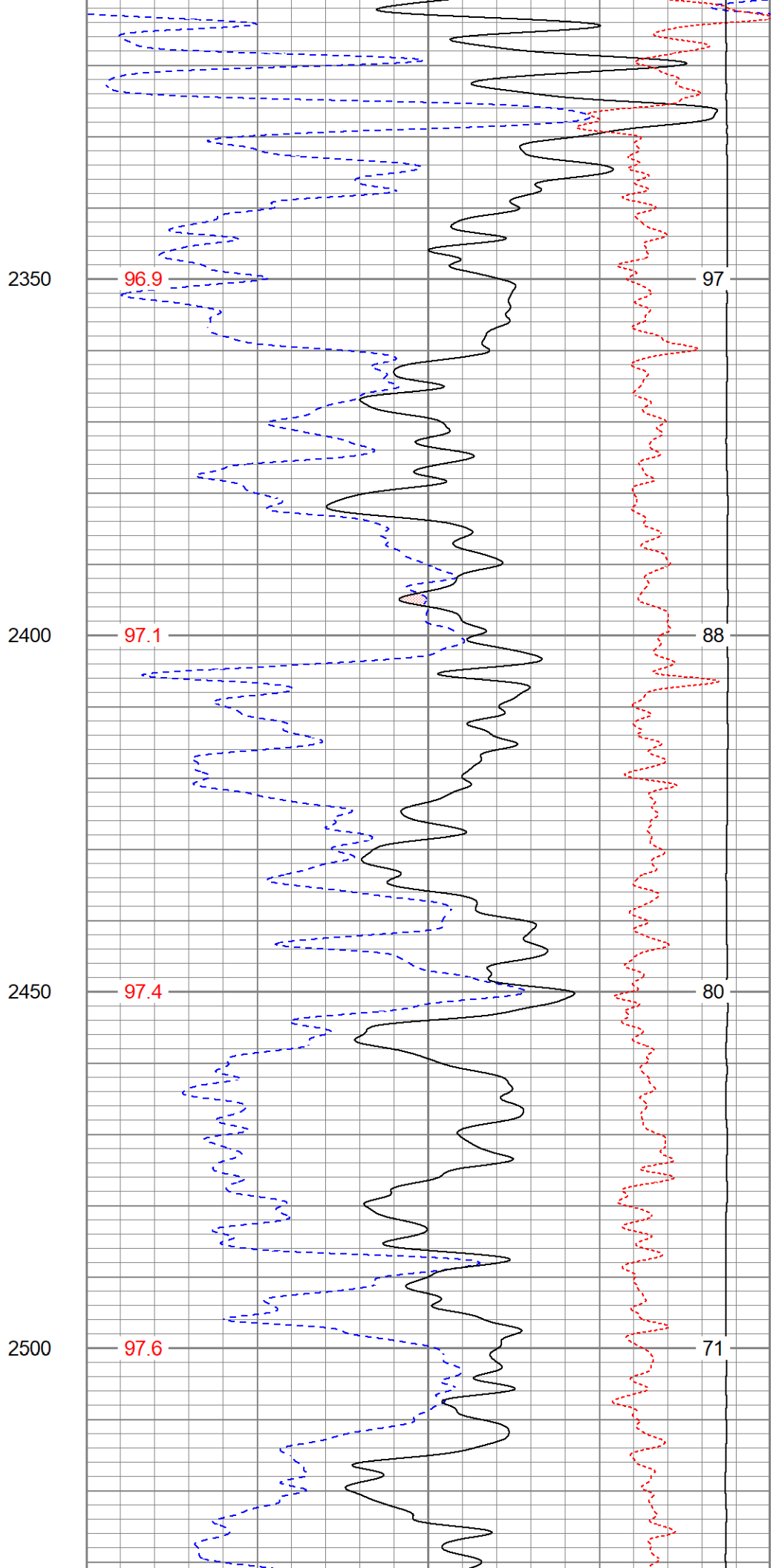
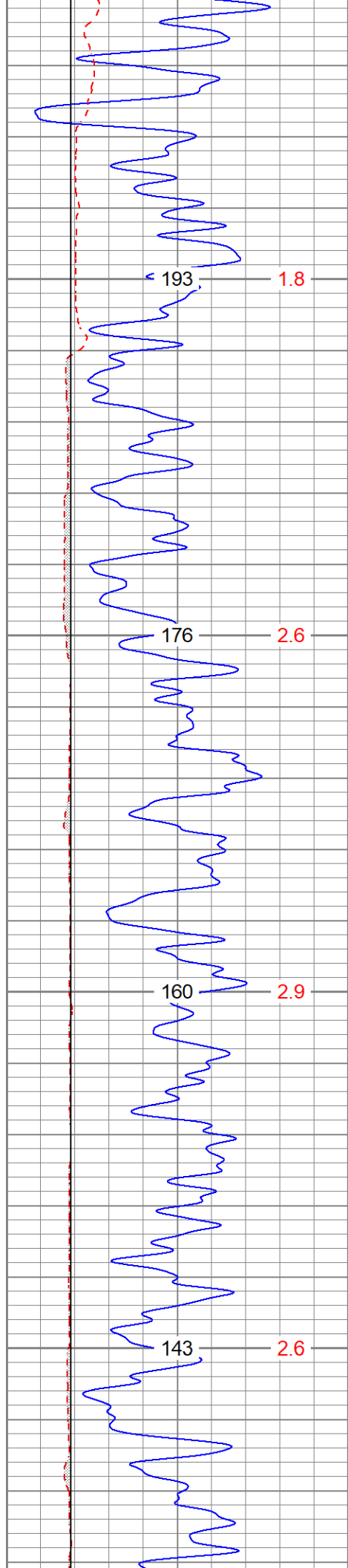


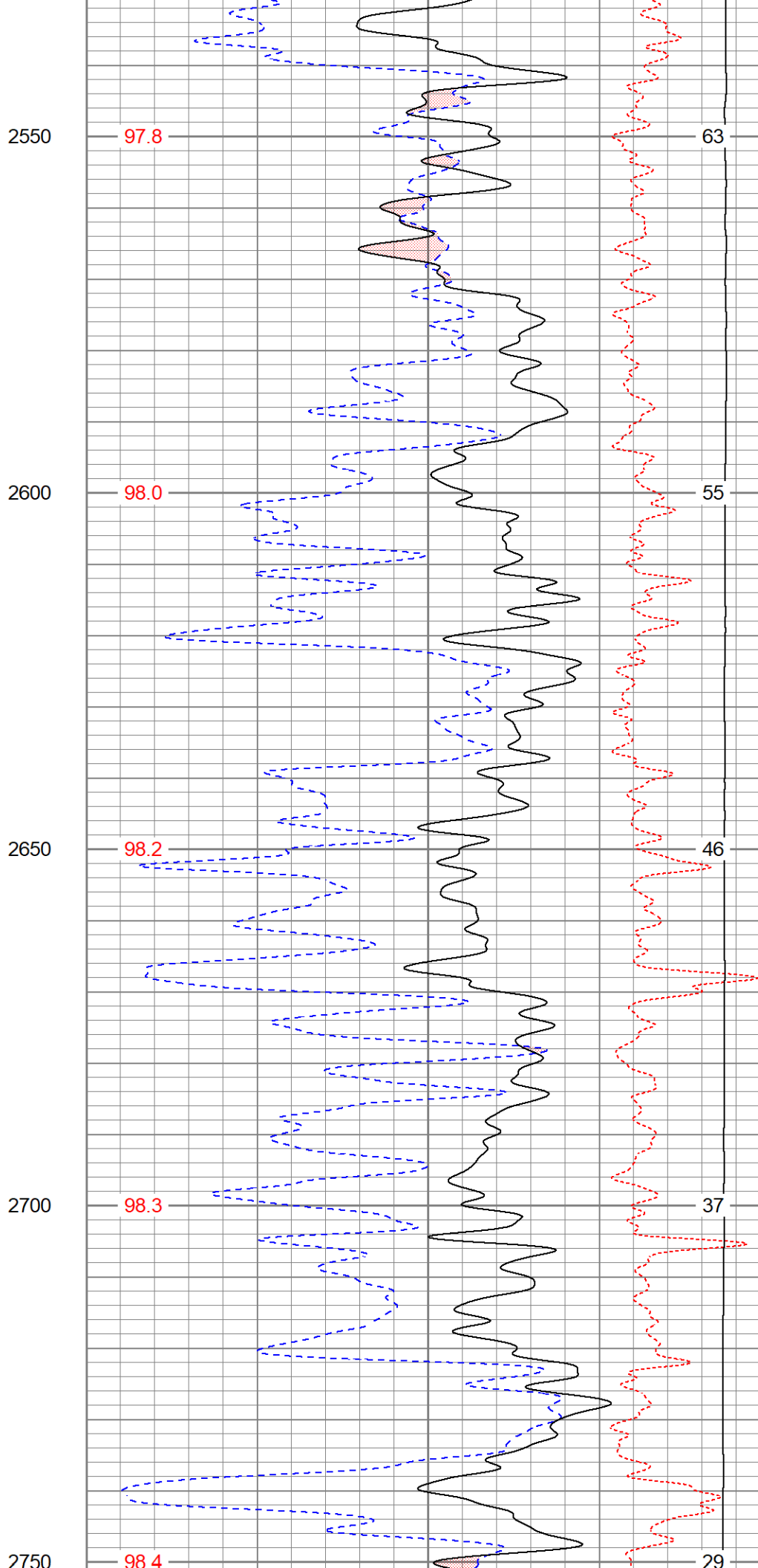
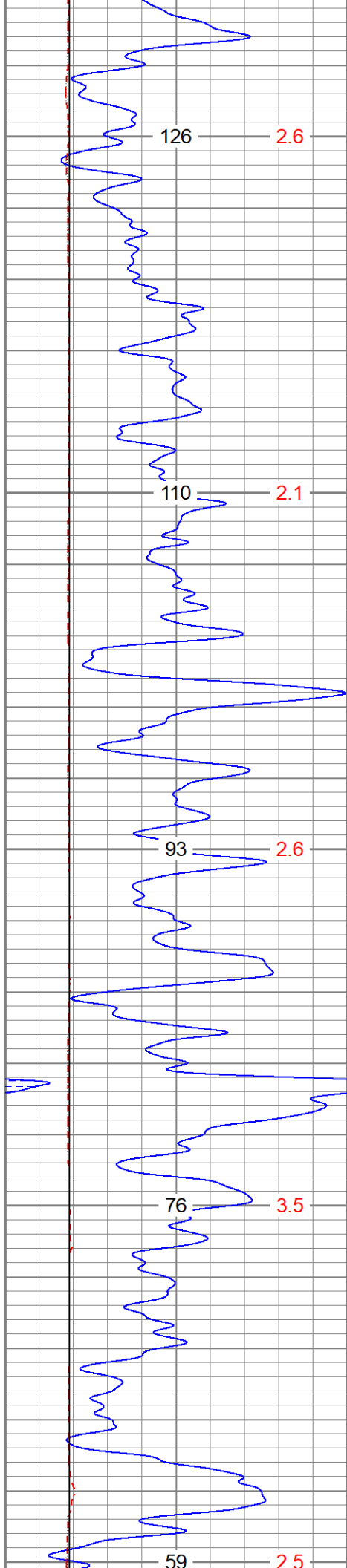


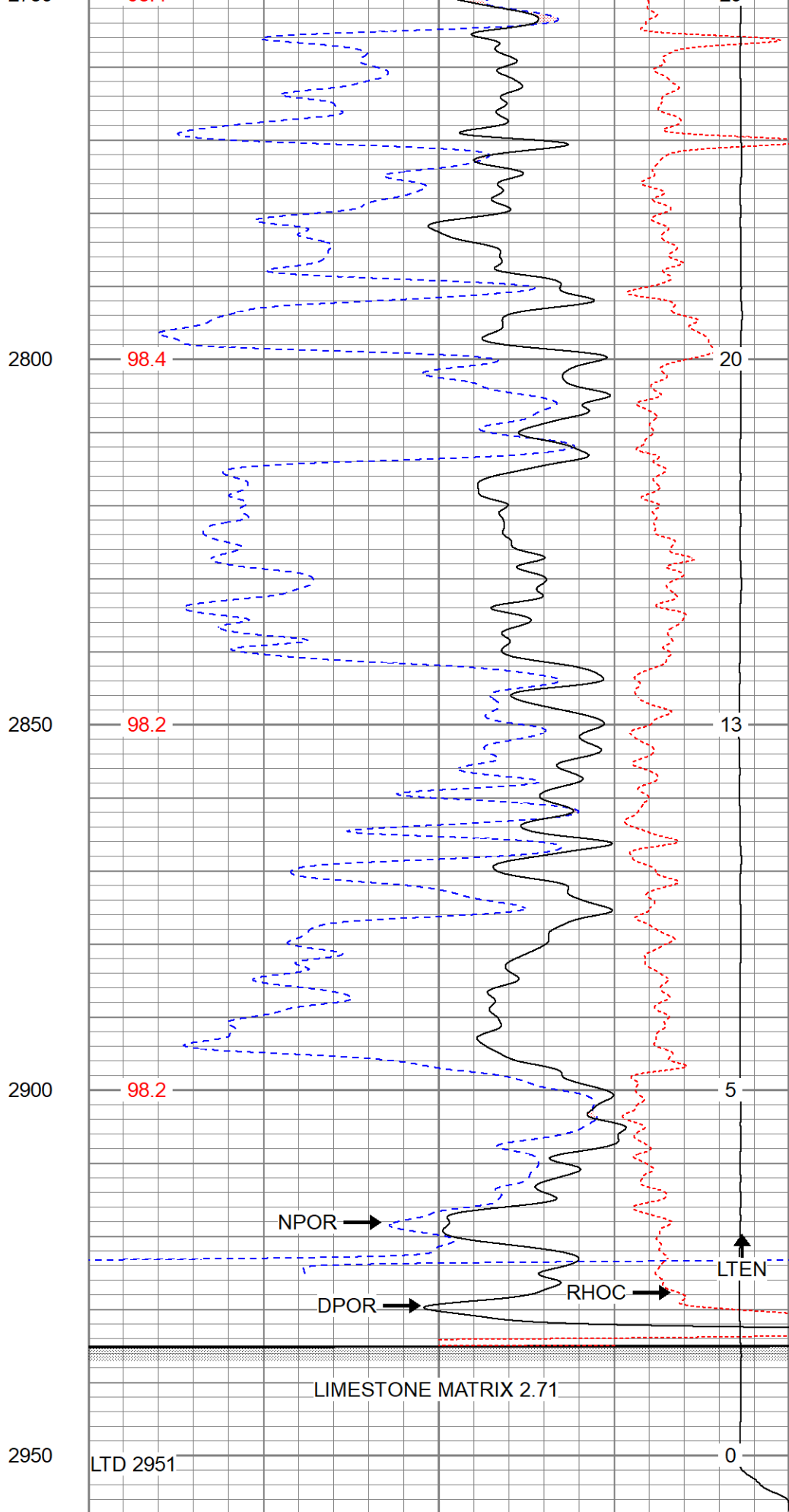
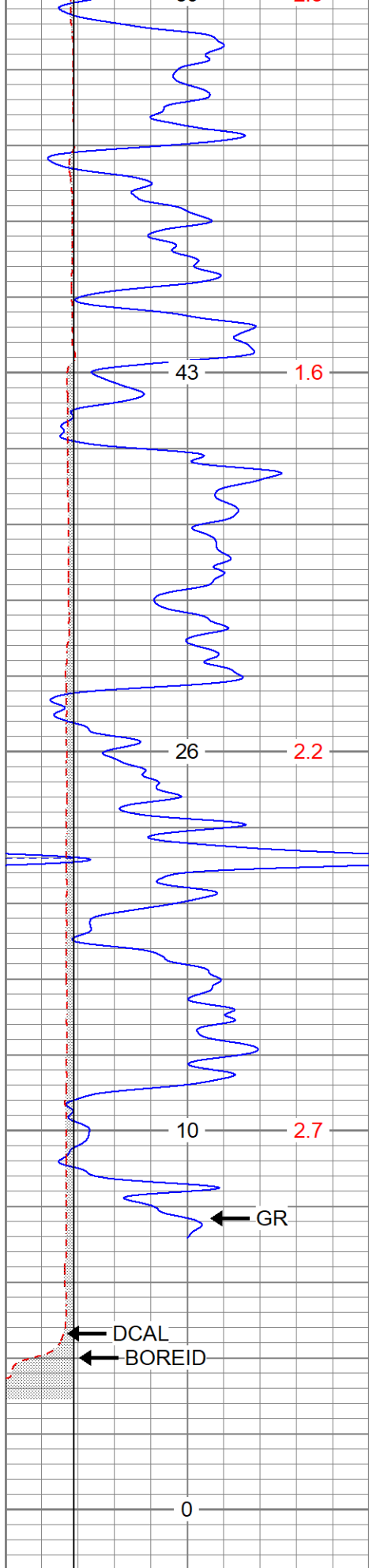




148  
138  
127  
117  
107







0	GR (GAPI)	150
6	DCAL (in)	16
6	BOREID (in)	16

30	NPOR (pu)	-10
30	DPOR (pu)	-10
70	DPOR (pu)	30

TBHV (ft3)	DEVI (deg)
------------	------------

TEMP (degF)
----------------

-0.25	RHOC (g/cc)	0.25
8000	LTEN (lb)	0

ABHV (ft3)



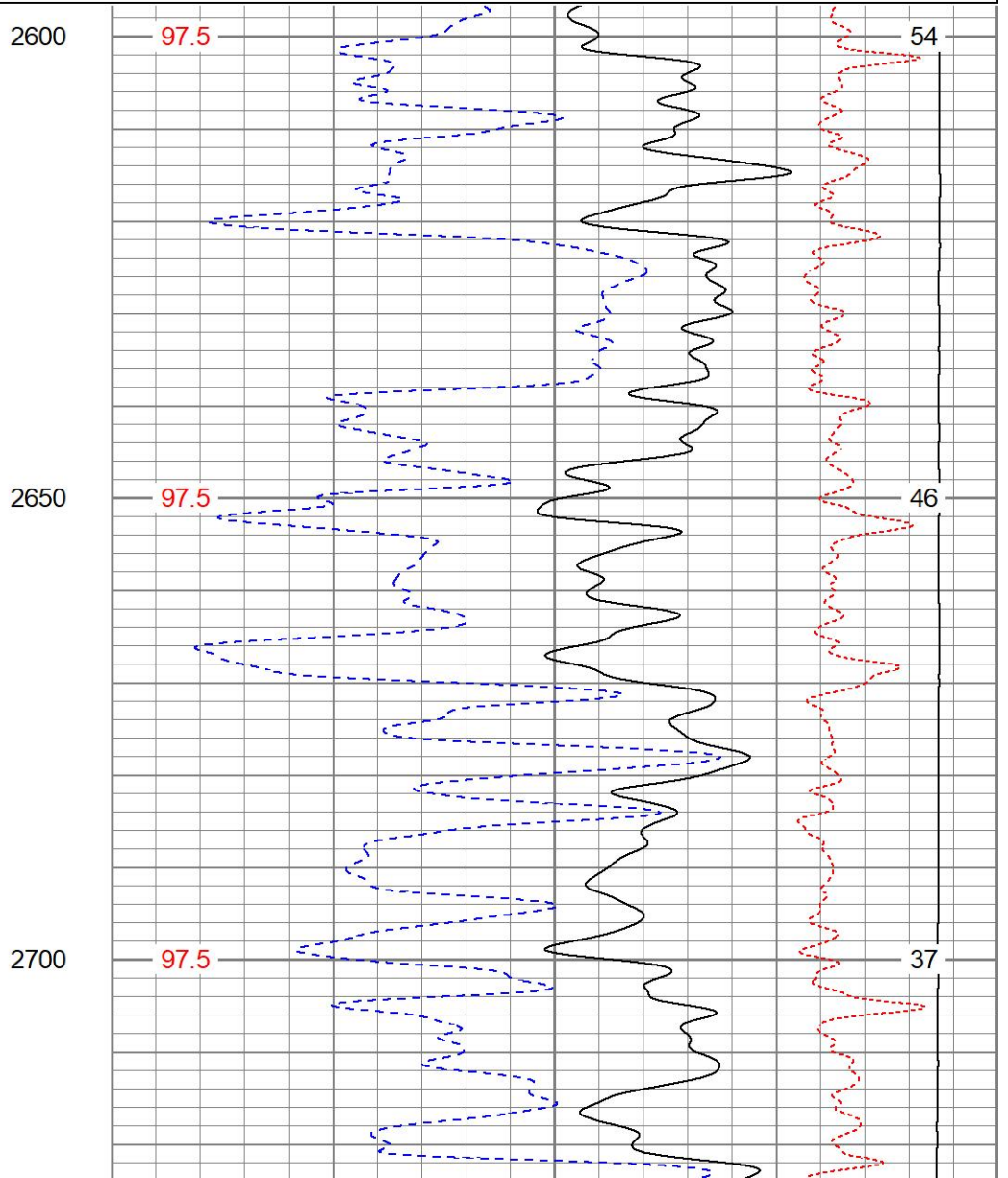
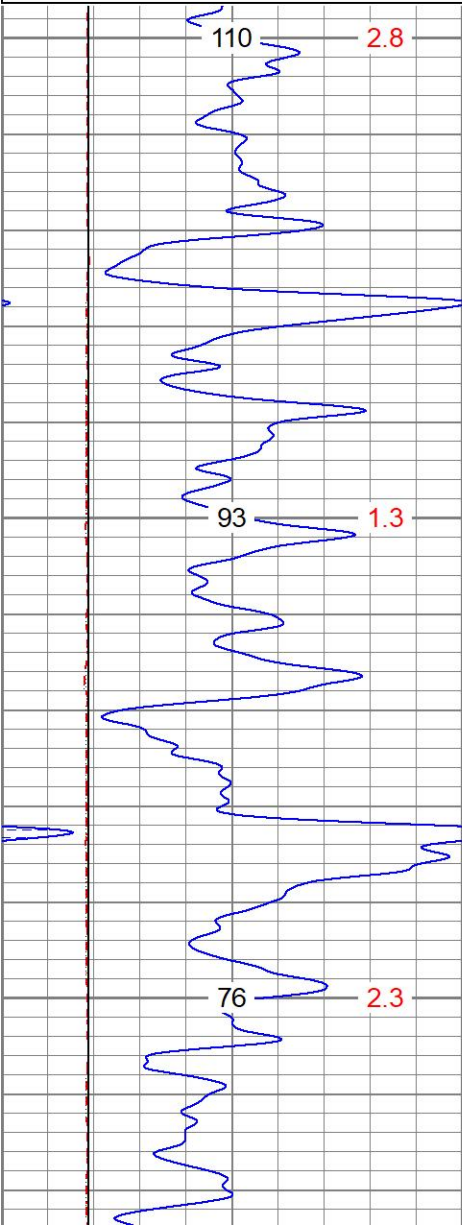
# REPEAT SECTION

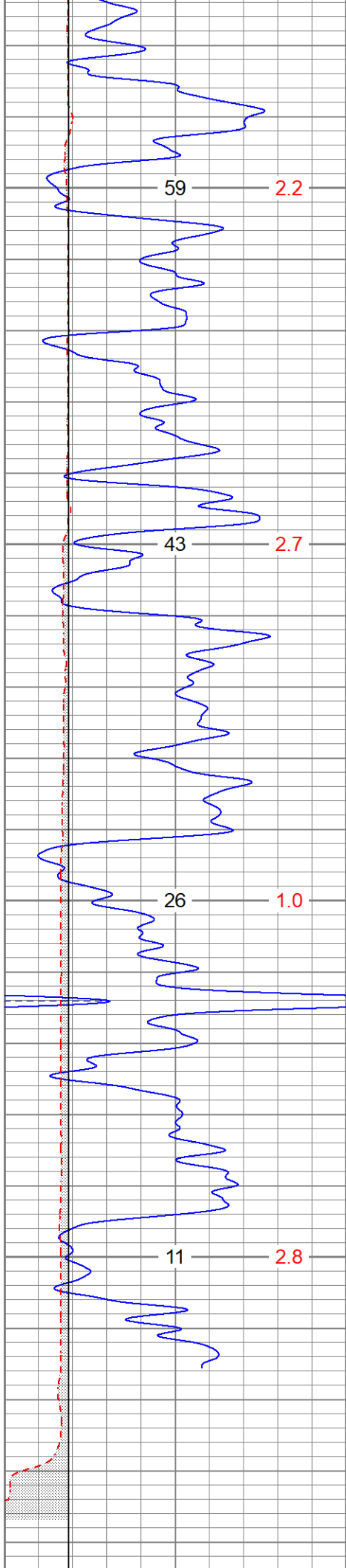
Database File      secollingwoodb4atu444oh.db  
 Dataset Pathname    pass3.1  
 Presentation Format   digital\_kcdnl  
 Dataset Creation     Sat Jul 23 05:45:18 2022  
 Charted by            Depth in Feet scaled 1:240

0	GR (GAPI)	150
6	DCAL (in)	16
6	BOREID (in)	16
	TBHV (ft3)	DEVI (deg)

30	NPOR (pu)	-10
30	DPOR (pu)	-10
70	DPOR (pu)	30

TEMP (degF)	-0.25	RHOC (g/cc)	0.25
	8000	LTEN (lb)	0
			ABHV (ft3)





2750

97.3

29

2800

96.9

20

2850

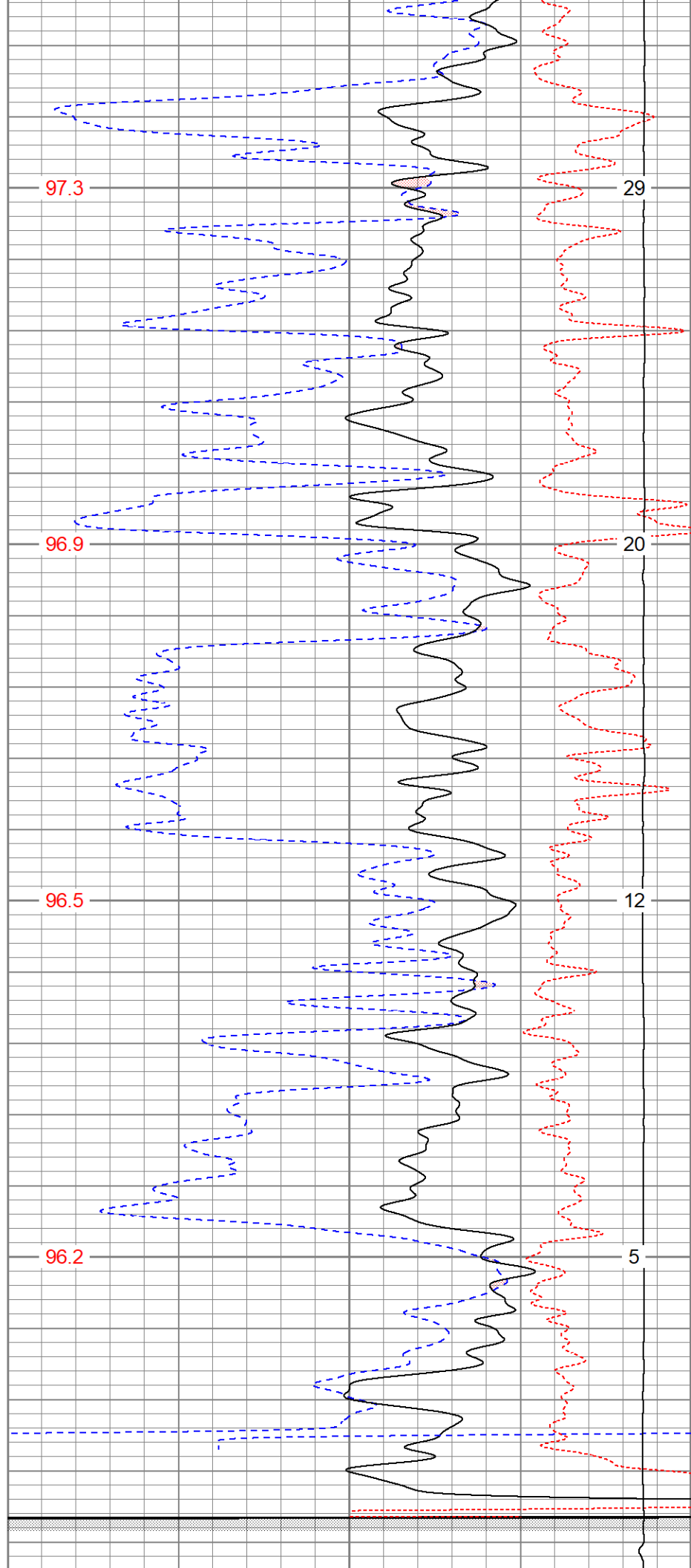
96.5

12

2900

96.2

5



0		2950	0			
0	GR (GAPI)	150	30	NPOR (pu)	-10	
6	DCAL (in)	16	30	DPOR (pu)	-10	
6	BOREID (in)	16	70	DPOR (pu)	30	
	TBHV (ft3)	DEVI (deg)	TEMP (degF)	-0.25	RHOC (g/cc)	0.25
				8000	LTEN (lb)	0
						ABHV (ft3)

### Calibration Report

Database File secollingwoodb4atu444oh.db  
Dataset Pathname pass3.1  
Dataset Creation Sat Jul 23 05:45:18 2022

### Dual Induction Calibration Report

Serial-Model: 1842-ADM  
Surface Cal Performed: Mon Sep 20 22:00:42 2021  
Downhole Cal Performed: Mon Sep 20 22:00:24 2021  
After Survey Verification Performed: Mon Sep 20 22:05:52 2021

#### Surface Calibration

Loop:	Readings				References			Results	
	Air	Loop			Air	Loop		m	b
Deep	0.018	0.672	V	0.000	350.000	mmho/m	535.475	-9.896	
Medium	0.003	0.769	V	0.000	400.000	mmho/m	522.607	-1.745	
Internal:	Zero	Cal		Zero	Cal		m	b	
Deep	0.018	0.672	V	0.000	350.000	mmho/m	535.240	-9.549	
Medium	0.003	0.768	V	0.000	550.000	mmho/m	718.637	-2.088	

#### Downhole Calibration

Internal:	Readings				References			Results	
	Zero	Cal			Zero	Cal		m	b
Deep	-0.219	349.905	mmho/m	-0.343	349.810	mmho/m	1.000	-3.124	
Medium	-0.118	399.722	mmho/m	-0.226	399.745	mmho/m	1.000	-3.108	
Shallow	2.536	0.025	V	500.000	2.000	Ohm-m	180.330	-1.504	

#### After Survey Verification

Internal:	Readings				Targets			Results	
	Zero	Cal			Zero	Cal		m'	b'
Deep	0.000	0.000	mmho/m	-0.219	349.905	mmho/m	1.000	-3.124	
Medium	0.000	0.000	mmho/m	-0.118	399.722	mmho/m	1.000	-3.108	
Shallow	0.000	0.000	Ohm-m	500.000	2.000	Ohm-m	1.000	0.000	

### Neutron Calibration Report

Serial Number: AD5139  
Tool Model: ADMY5139  
Performed: (Not Performed)

Calibrator Value: 1 NAPI

Calibrator Reading:	1	cps
Sensitivity:	1	NAPI/cps

Temperature Calibration Report

Serial Number:	WithMC			
Tool Model:	WMC			
Performed:	Fri Apr 19 12:15:04 2019			
		Reference		Reading
Low Reference:	0.00	degF	0.00	degF
High Reference:	1.00	degF	1.00	degF
Gain:	1.00			
Offset:	0.00			
Delta Spacing	1			

Inclinometer Calibration Report

Performed:	Wed May 5 19:20:48 2021				
	Low Read.	High Read.	Low Ref.	High Ref.	
X Accelerometer	205.00	1843.00	-1.00	1.00	gee
Y Accelerometer	205.00	1843.00	-1.00	1.00	gee
Z Accelerometer					gee

Gamma Ray Calibration Report

Serial Number:	WithMC	
Tool Model:	WMC	
Performed:	Wed Jun 15 11:53:49 2022	
Calibrator Value:	1.0	GAPI
Background Reading:	0.0	cps
Calibrator Reading:	1.0	cps
Sensitivity:	1.1000	GAPI/cps