



**COMPENSATED  
DENSITY/NEUTRON  
LOG**

Company PALOMINO PETROLEUM, INC.  
Well KELLY CRIST #3  
Field UNNAMED  
County SCOTT State KANSAS

Location: API #: 15-171-21287-0000  
NW-NW-NW-NE  
181' FNL & 244' FEL  
SEC 28 TWP 20S RGE 34W  
Permanent Datum GROUND LEVEL Elevation 3079  
Log Measured From KELLY BUSHING 10' A.G.L.  
Drilling Measured From KELLY BUSHING  
Elevation  
K.B. 3090  
D.F. 3088  
G.L. 3079

Date	5/6/22	
Run Number	ONE	
Depth Driller	5015	
Depth Logger	5015	
Bottom Logged Interval	4991	
Top Log Interval	3700	
Casing Driller	8 5/8" @ 227'	
Casing Logger	227	
Bit Size	7 7/8"	
Type Fluid in Hole	CHEMICAL MUD	CHLORIDES: 6,700 PPM
Density / Viscosity	9.5/62	
pH / Fluid Loss	9.0/9.6	
Source of Sample	FLOWLINE	
Rm @ Meas. Temp	.650 @ 65F	
Rmf @ Meas. Temp	.488 @ 65F	
Rmc @ Meas. Temp	.780 @ 65F	
Source of Rmf / Rmc	MEASURED	
Rm @ BHT	.338 @ 125F	
Time Circulation Stopped	3 HOURS	
Time Logger on Bottom	3:30 P.M.	
Maximum Recorded Temperature	125F	
Equipment Number	8916	
Location	HAYS, KANSAS	
Recorded By	JEFF LUEBBERS	COLE ROBBEN
Witnessed By	RYAN SEIB	

<<< Fold Here >>>

All interpretations are opinions based on inferences from electrical or other measurements and we cannot and do not guarantee the accuracy or correctness of any interpretation, and we shall not, except in the case of gross or willful negligence on our part, be liable or responsible for any loss, costs, damages, or expenses incurred or sustained by anyone resulting from any interpretation made by any of our officers, agents or employees. These interpretations are also subject to our general terms and conditions set out in our current Price Schedule.

Comments

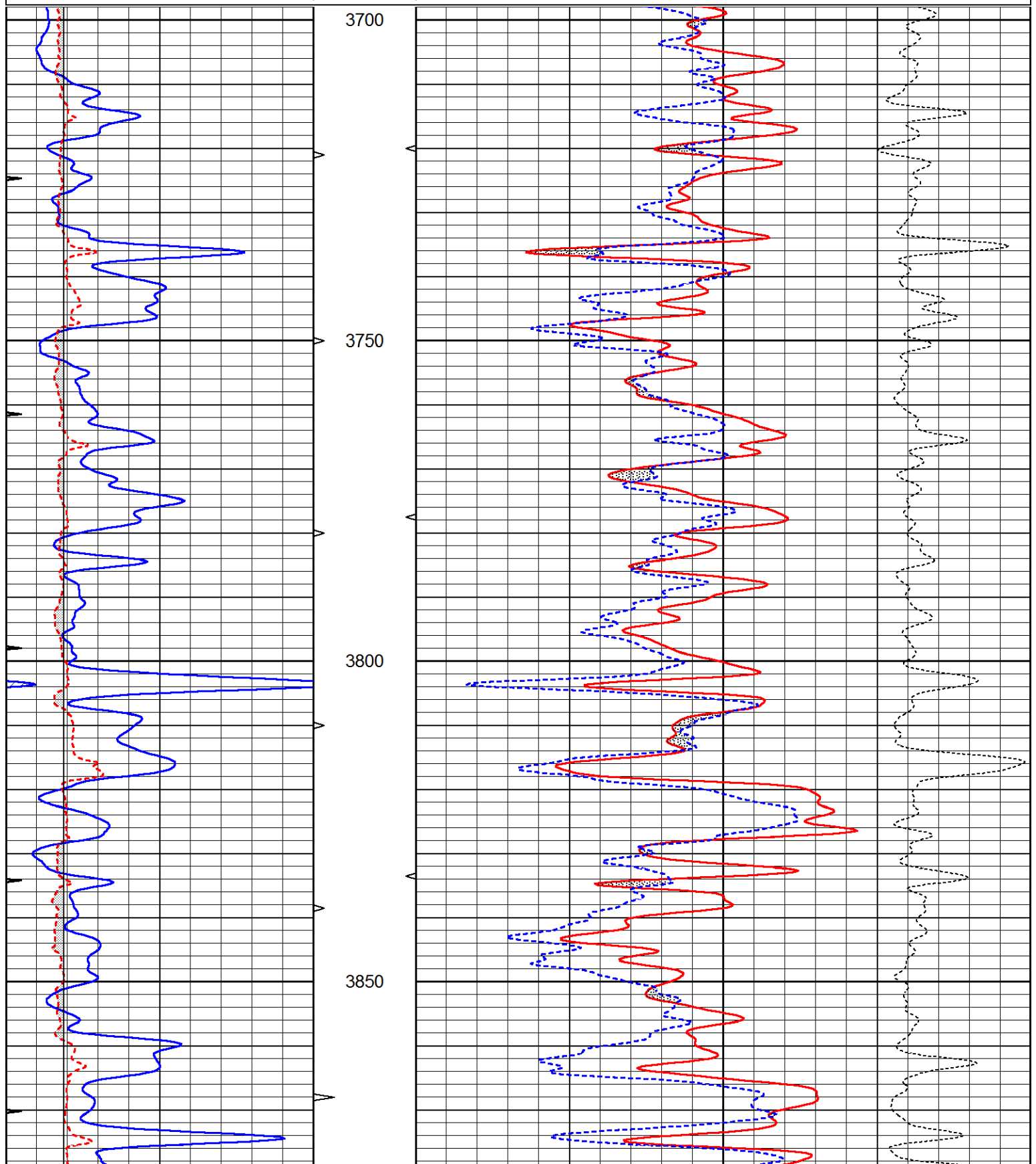
THANK YOU FOR USING ELI WIRELINE, HAYS, KS. (785) 628-6395  
DIRECTIONS:  
SCOTT CITY, KANSAS. 10 MILES SOUTH TO RD. 40, 9 MILES WEST TO  
CHEROKEE RD, 2 MILES SOUTH, 1/2 WEST, SOUTH INTO

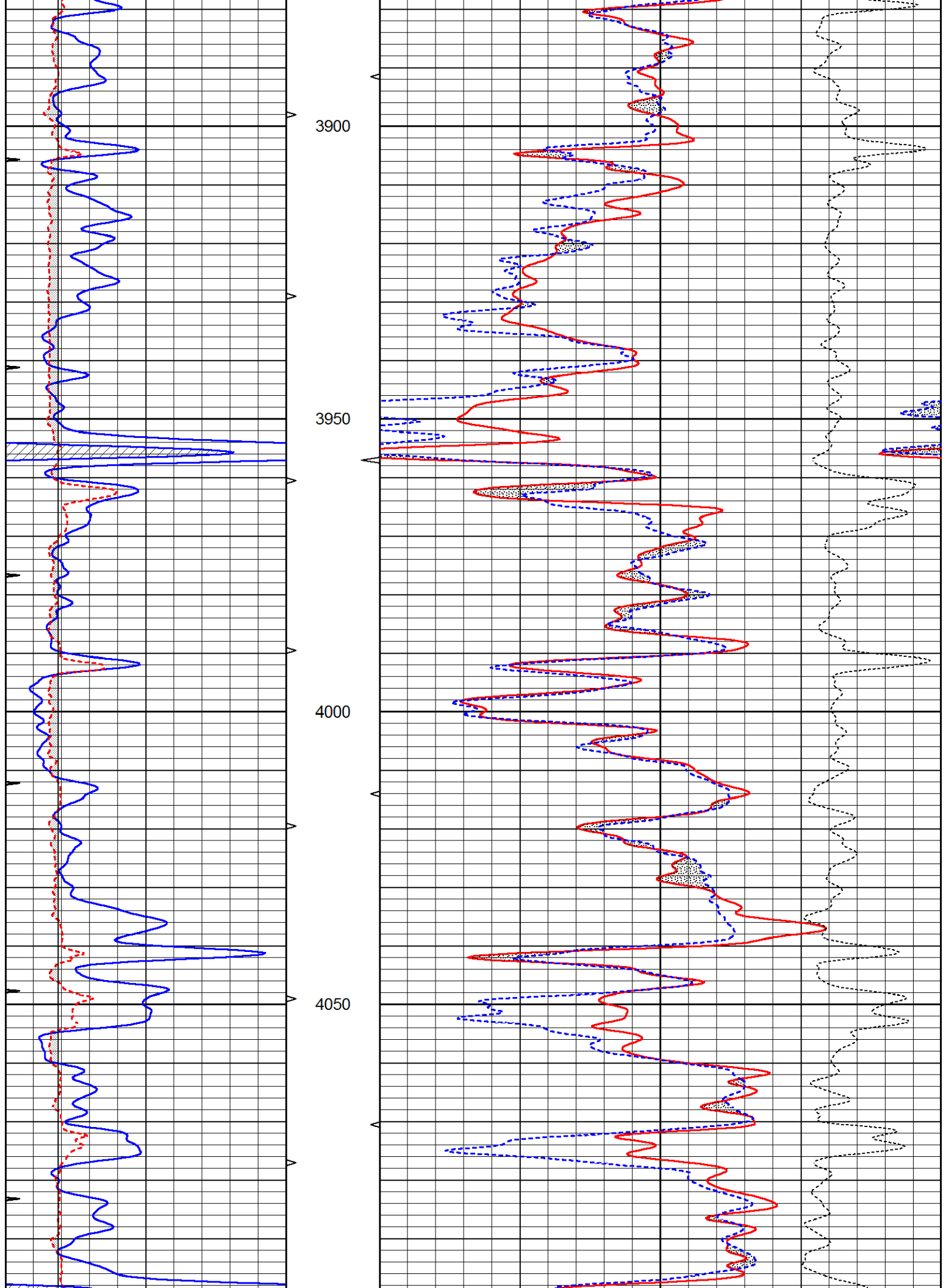


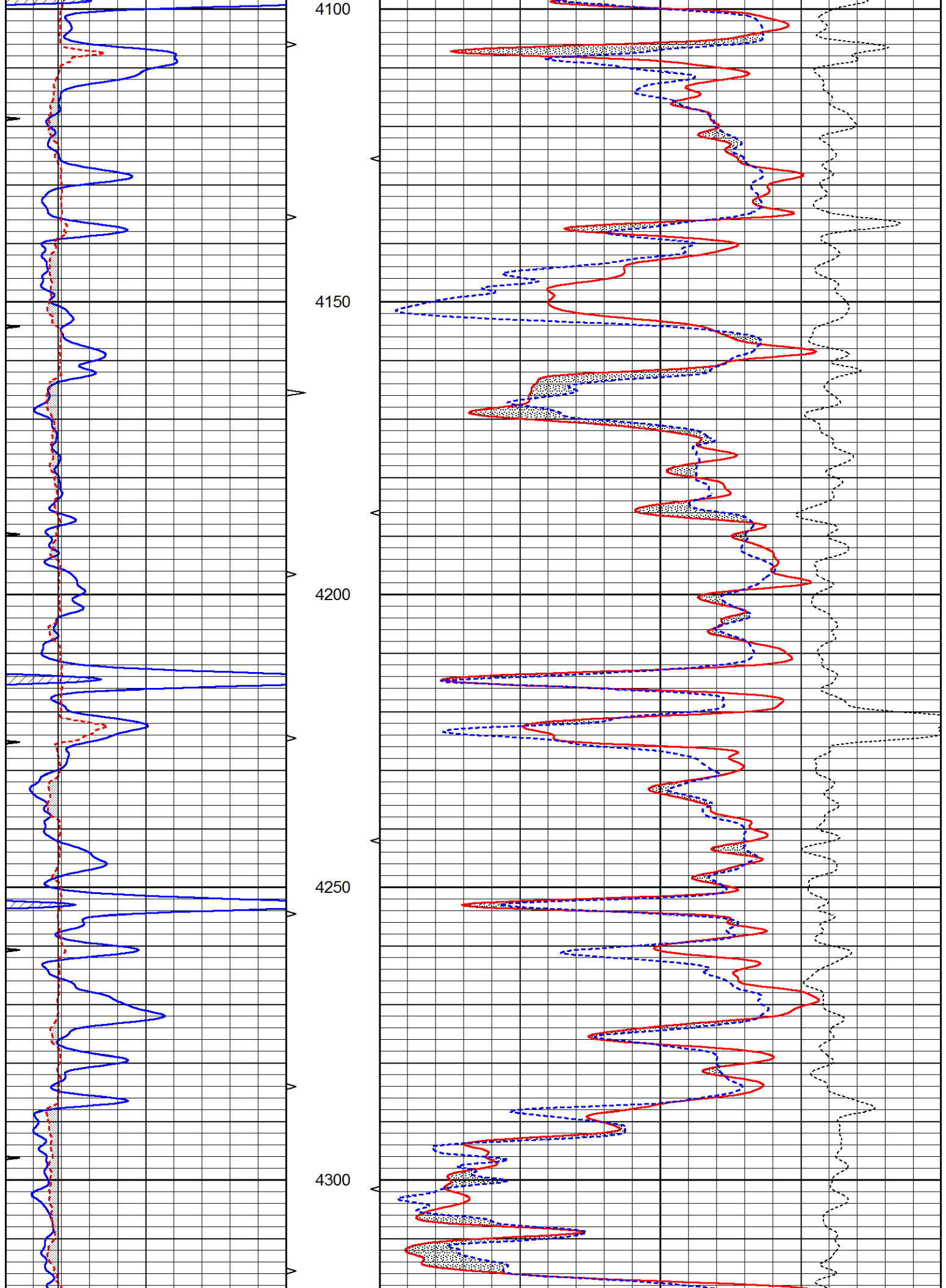
# MAIN SECTION

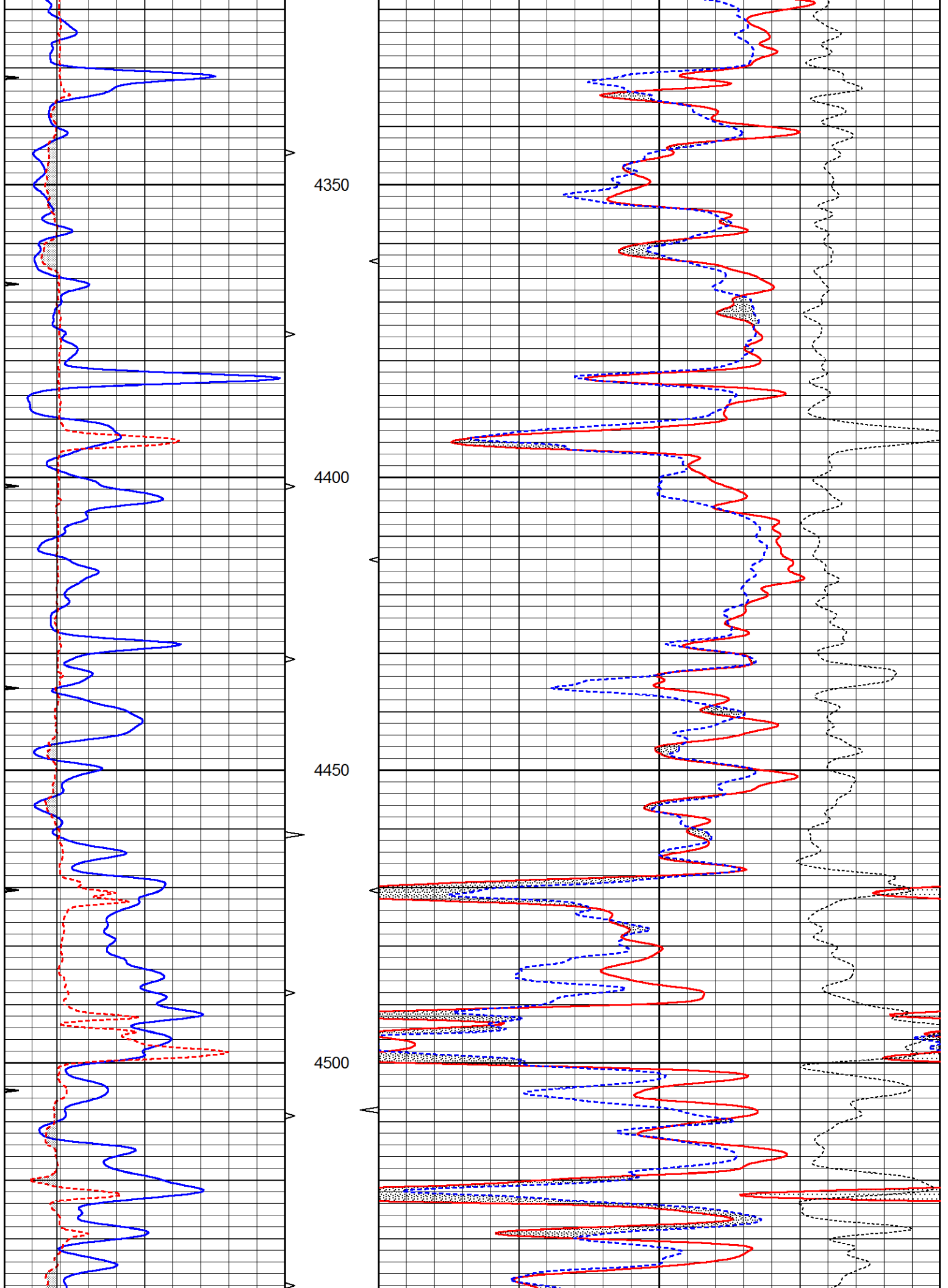
Database File 5899ddn.db  
 Dataset Pathname pass3.6M  
 Presentation Format den\_neu  
 Dataset Creation Fri May 06 17:27:27 2022  
 Charted by Depth in Feet scaled 1:240

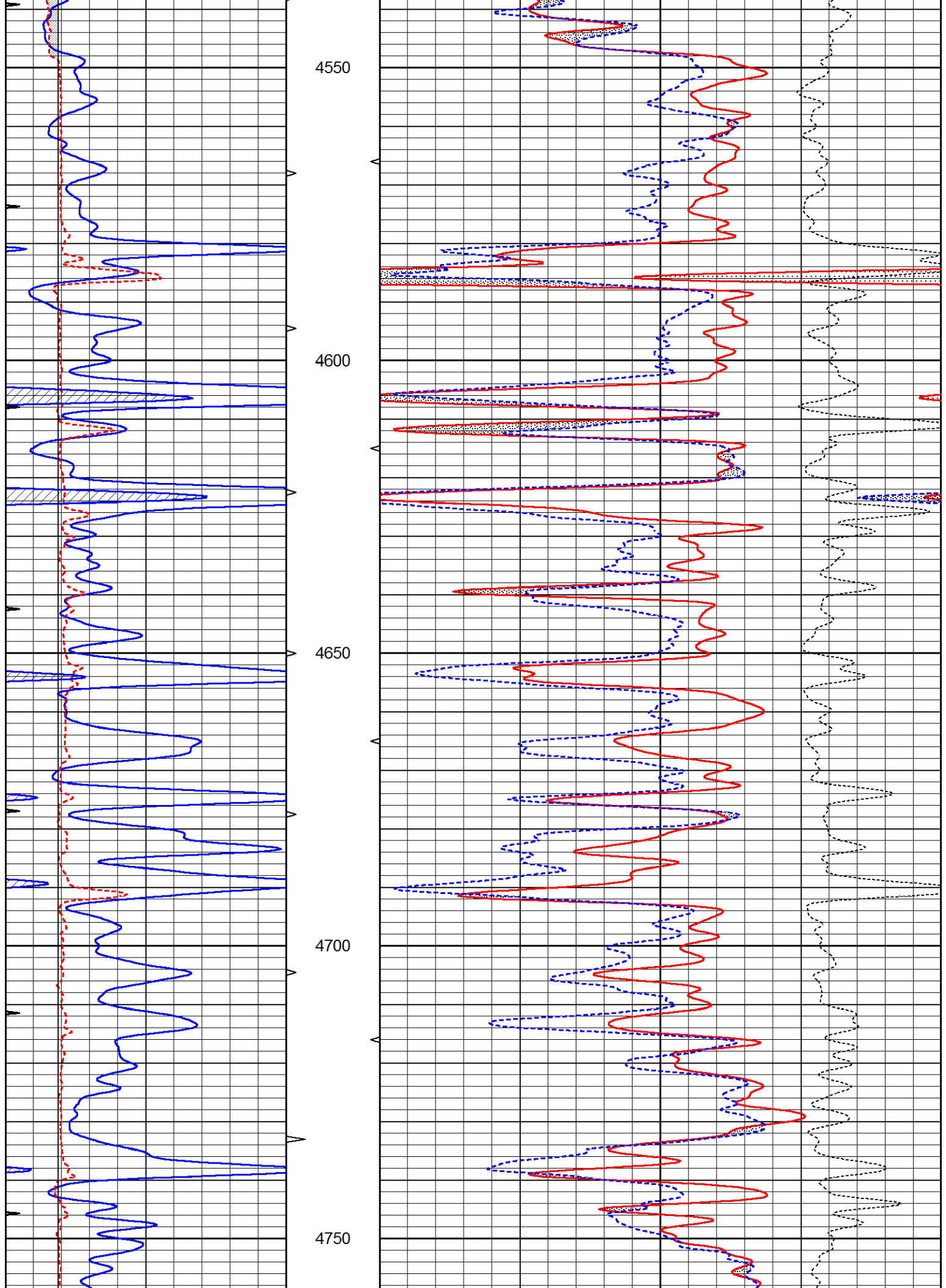
0	GAMMA RAY (GAPI)	150	ABHV	30	COMPENSATED DENSITY (pu)	-10
6	CALIPER (in)	16	10 (ft3)	0	COMPENSATED NEUTRON (pu)	-10
0	MINMK	20	TBHV		-0.25 CORRECTION (g/cc)	0.25
			0 (ft3)	10		

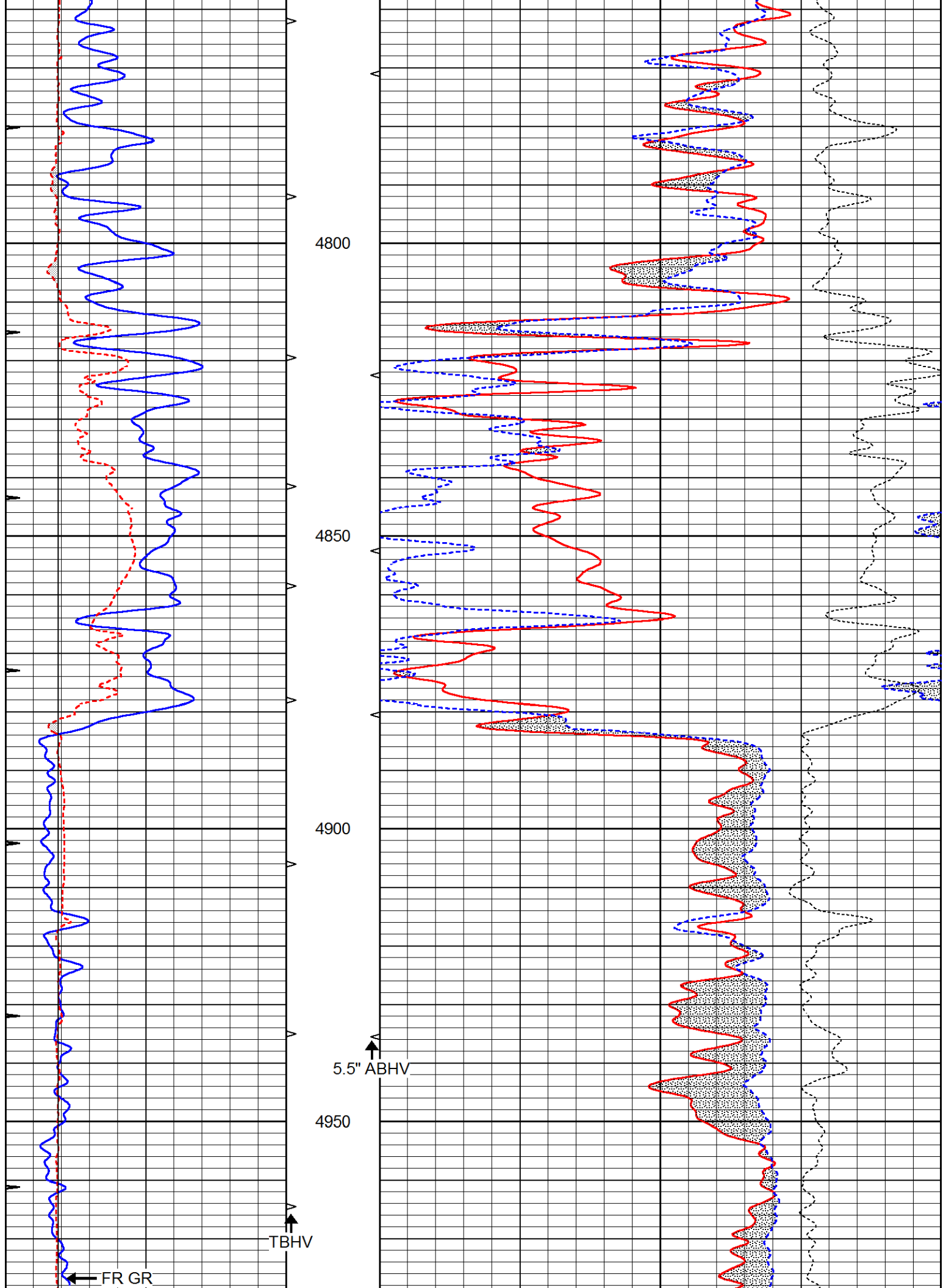


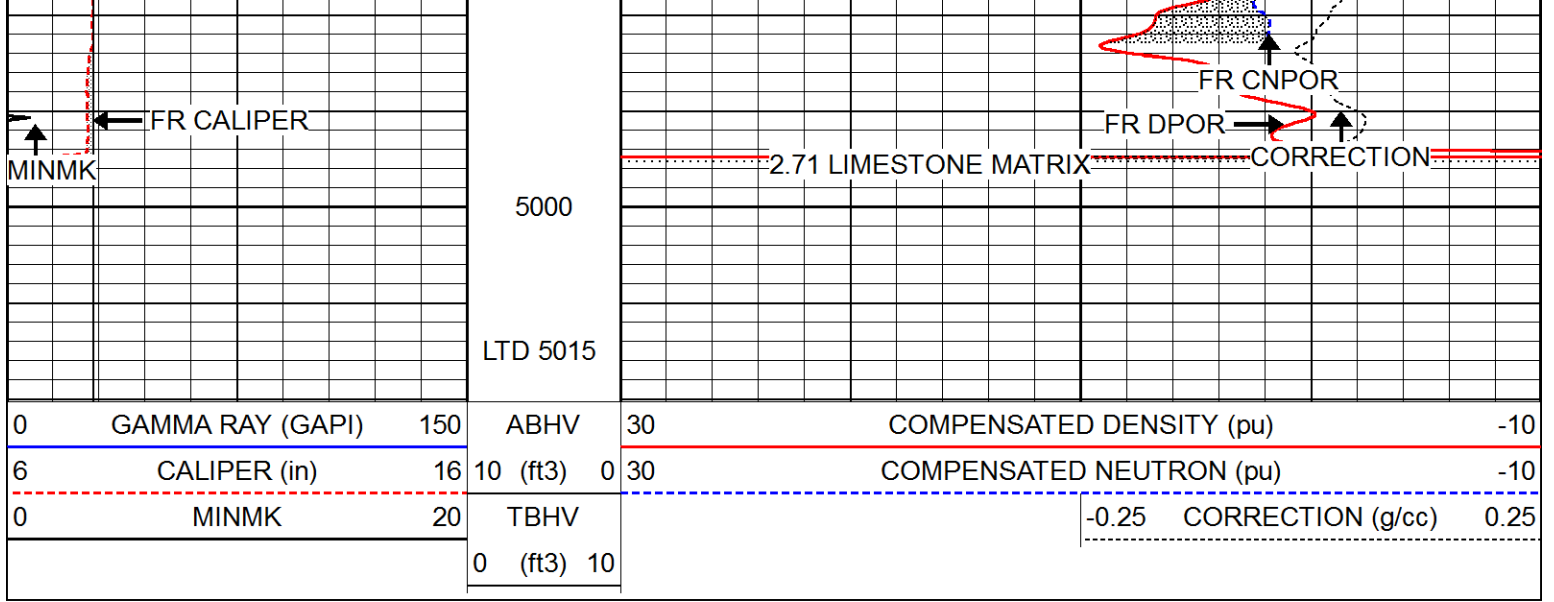






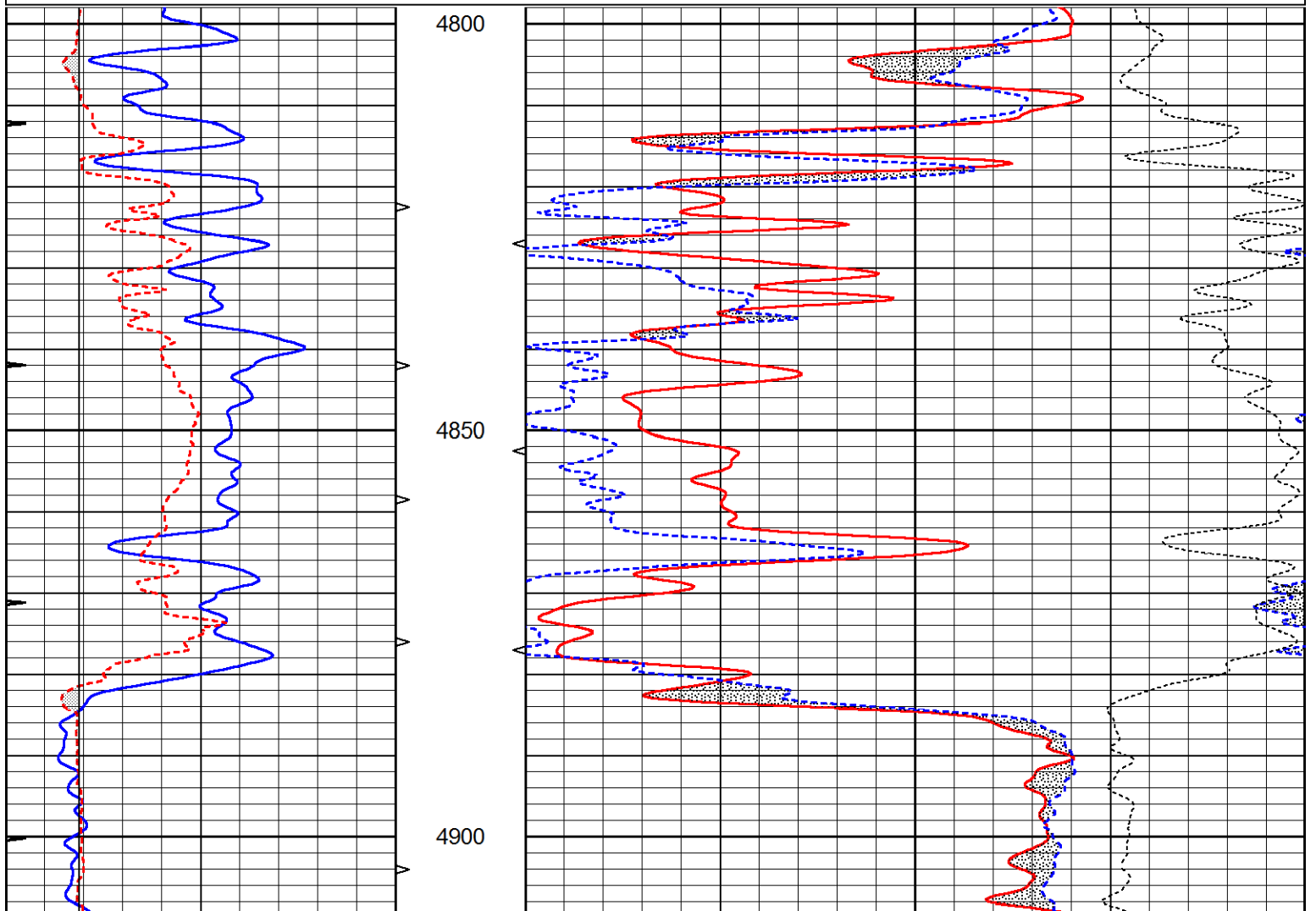


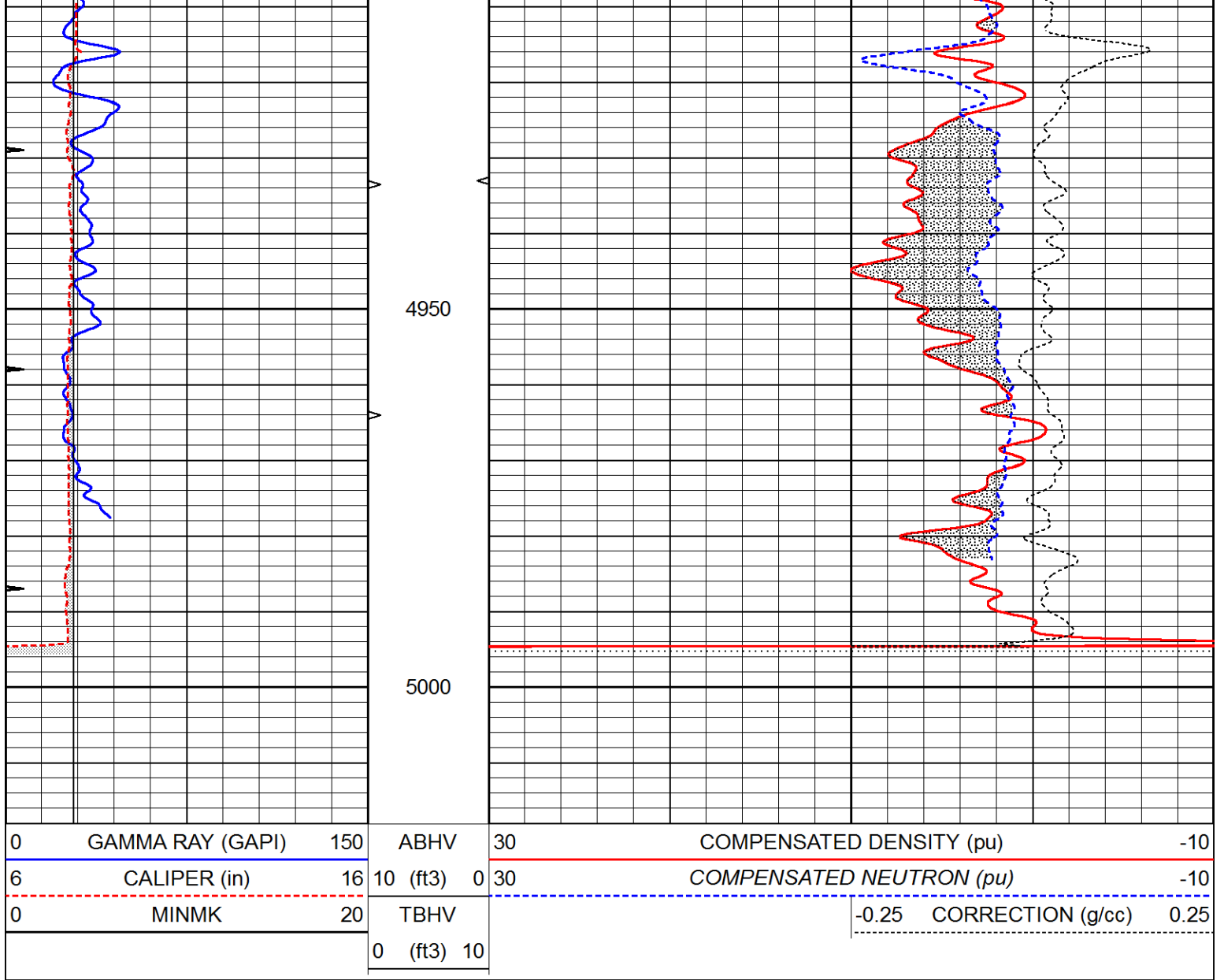




Database File 5899ddn.db  
 Dataset Pathname pass2.6R  
 Presentation Format den\_neu  
 Dataset Creation Fri May 06 17:19:04 2022  
 Charted by Depth in Feet scaled 1:240

0	GAMMA RAY (GAPI)	150	ABHV	30	COMPENSATED DENSITY (pu)	-10
6	CALIPER (in)	16	10 (ft3)	0 30	COMPENSATED NEUTRON (pu)	-10
0	MINMK	20	TBHV		-0.25 CORRECTION (g/cc)	0.25
			0 (ft3)	10		





### Calibration Report

Database File 5899ddn.db  
 Dataset Pathname pass3.6M  
 Dataset Creation Fri May 06 17:27:27 2022

### Dual Induction Calibration Report

Serial-Model: PROBE8-DILG  
 Surface Cal Performed: Fri May 06 15:03:38 2022  
 Downhole Cal Performed: Mon Sep 10 14:28:38 2018  
 After Survey Verification Performed: Mon Sep 10 14:28:40 2018

#### Surface Calibration

Loop:	Readings				References		Results	
	Air	Loop			Air	Loop	m	b
Deep	0.015	0.648	V	0.000	400.000	mmho/m	600.000	2.000
Medium	0.029	0.796	V	0.000	464.000	mmho/m	590.000	-10.000
Internal:	Zero	Cal		Zero	Cal		m	b
Deep	0.017	0.657	V	0.000	400.000	mmho/m	625.153	-10.619
Medium	0.016	0.757	V	0.000	464.000	mmho/m	625.992	-9.739

#### Downhole Calibration

	Readings			References			Results	
	Zero	Cal		Zero	Cal		m'	b'
Deep	0.000	0.000	mmho/m	2.011	405.777	mmho/m	1.000	0.000
Medium	0.000	0.000	mmho/m	7.590	503.393	mmho/m	1.000	0.000
LL3		7.500	V		1500.000	Ohm-m		
		0.000	V		20.000	Ohm-m		
		-7.200	V		3800.000	mmho-m		

After Survey Verification								
	Readings			Targets			Results	
	Zero	Cal		Zero	Cal		m'	b'
Deep	0.000	0.000	mmho/m	0.000	0.000	mmho/m	0.000	0.000
Medium	0.000	0.000	mmho/m	0.000	0.000	mmho/m	0.000	0.000
LL3		1.000	Ohm-m		1.000	Ohm-m		
		0.000	Ohm-m		0.000	Ohm-m		
		1.000	mmho-m		1.000	mmho-m		

Litho Density Calibration Report  
Serial: 002N      Model: PRB

Master Calibration		Performed Tue Mar 10 15:08:00 2020					
	Background	Magnesium	Aluminum	Aluminum+Fe			
Window 1	780.1	6981.9	2088.6	1871.2			cps
Window 2	718.6	5898.2	1813.8	1664.1			cps
Window 3	580.0	2989.5	1088.0	1039.1			cps
Window 4	172.8	175.7	175.3	173.5			cps
Long Space	0.0	5179.6	1095.2	945.5			cps
Short Space	1.1	1228.6	821.2	690.4			cps
Rho		1.7100	2.5900	0.0000			g/cc
Pe		2.0000	2.7500	5.7900			
Rib Angle	: 45.5	Rib Slope	: 1.016	Density/Spine Ratio			: 0.548
Spine Angle	: 75.5	Spine Slope	: 3.857	Spine Intercept			: -18.9

Before Survey Verification		Performed Wed Dec 31 18:00:00 1969					
	Background	Magnesium	Aluminum	Aluminum+Fe			
Window 1	0.0	0.0	0.0	0.0			cps
Window 2	0.0	0.0	0.0	0.0			cps
Window 3	0.0	0.0	0.0	0.0			cps
Window 4	0.0	0.0	0.0	0.0			cps
Long Space	0.0	0.0	0.0	0.0			cps
Short Space	0.0	0.0	0.0	0.0			cps
Measured Rho		0.0000	0.0000	0.0000			g/cc
Measured Correction		0.0000	0.0000	0.0000			g/cc
Measured Pe			0.0000	0.0000			

After Survey Verification		Performed Wed Dec 31 18:00:00 1969					
	Background	Magnesium	Aluminum	Aluminum+Fe			
Window 1	0.0	0.0	0.0	0.0			cps
Window 2	0.0	0.0	0.0	0.0			cps
Window 3	0.0	0.0	0.0	0.0			cps
Window 4	0.0	0.0	0.0	0.0			cps
Long Space	0.0	0.0	0.0	0.0			cps
Short Space	0.0	0.0	0.0	0.0			cps
Measured Rho		0.0000	0.0000	0.0000			g/cc
Measured Correction		0.0000	0.0000	0.0000			g/cc
Measured Pe			0.0000	0.0000			

## Compensated Neutron Calibration Report

Serial Number: 6I  
Tool Model: G

## CALIBRATION

Detector	Readings	Target	Normalization
Short Space	1.00 cps	1.00 cps	1.0000
Long Space	1.00 cps	1.00 cps	1.0000

## PRE-SURVEY VERIFICATION

	Detector	Readings	Measured	Target
1)	Short Space	cps		
	Long Space	cps	pu	pu
2)	Short Space	cps		
	Long Space	cps	pu	
3)	Short Space	cps		
	Long Space	cps	pu	

## POST-SURVEY VERIFICATION

	Detector	Readings	Measured	Target
1)	Short Space	cps		
	Long Space	cps	pu	pu
2)	Short Space	cps		
	Long Space	cps	pu	pu
3)	Short Space	cps		
	Long Space	cps	pu	pu

## Gamma Ray Calibration Report

Serial Number: GR6  
Tool Model: OPEN  
Performed: Thu May 05 16:17:57 2022

Calibrator Value: 150.0 GAPI

Background Reading: 0.0 cps  
Calibrator Reading: 276.0 cps

Sensitivity: 0.7500 GAPI/cps