

MICRO LOG



Company PALOMINO PETROLEUM, INC.
 Well KELLY CRIST #3
 Field UNNAMED
 County SCOTT State KANSAS

Location: API #: 15-171-21287-0000
 NW-NW-NW-NE
 181' FNL & 2441' FEL
 SEC 28 TWP 20S RGE 34W
 Permanent Datum GROUND LEVEL Elevation 3079
 Log Measured From KELLY BUSHING 10' A.G.L.
 Drilling Measured From KELLY BUSHING
 Other Services CDL/CNL DIL
 Elevation K.B. 3090 D.F. 3088 G.L. 3079

Date	5/6/22
Run Number	TWO
Depth Driller	5015
Depth Logger	5015
Bottom Logged Interval	5013
Top Log Interval	3700
Casing Driller	8 5/8" @ 227'
Casing Logger	227
Bit Size	7 7/8"
Type Fluid in Hole	CHEMICAL MUD
Density / Viscosity	9.5/62
pH / Fluid Loss	9.0/9.6
Source of Sample	FLOWLINE
Rm @ Meas. Temp	.650 @ 65F
Rmf @ Meas. Temp	.488 @ 65F
Rmc @ Meas. Temp	.780 @ 65F
Source of Rmf / Rmc	MEASURED
Rm @ BHT	.338 @ 125F
Time Circulation Stopped	5 HOURS
Time Logger on Bottom	5:30 P.M.
Maximum Recorded Temperature	125F
Equipment Number	8916
Location	HAYS, KANSAS
Recorded By	JEFF LUEBBERS
Witnessed By	RYAN SEIB
	COLE ROBBEN

<<< Fold Here >>>

All interpretations are opinions based on inferences from electrical or other measurements and we cannot and do not guarantee the accuracy or correctness of any interpretation, and we shall not, except in the case of gross or willful negligence on our part, be liable or responsible for any loss, costs, damages, or expenses incurred or sustained by anyone resulting from any interpretation made by any of our officers, agents or employees. These interpretations are also subject to our general terms and conditions set out in our current Price Schedule.

Comments

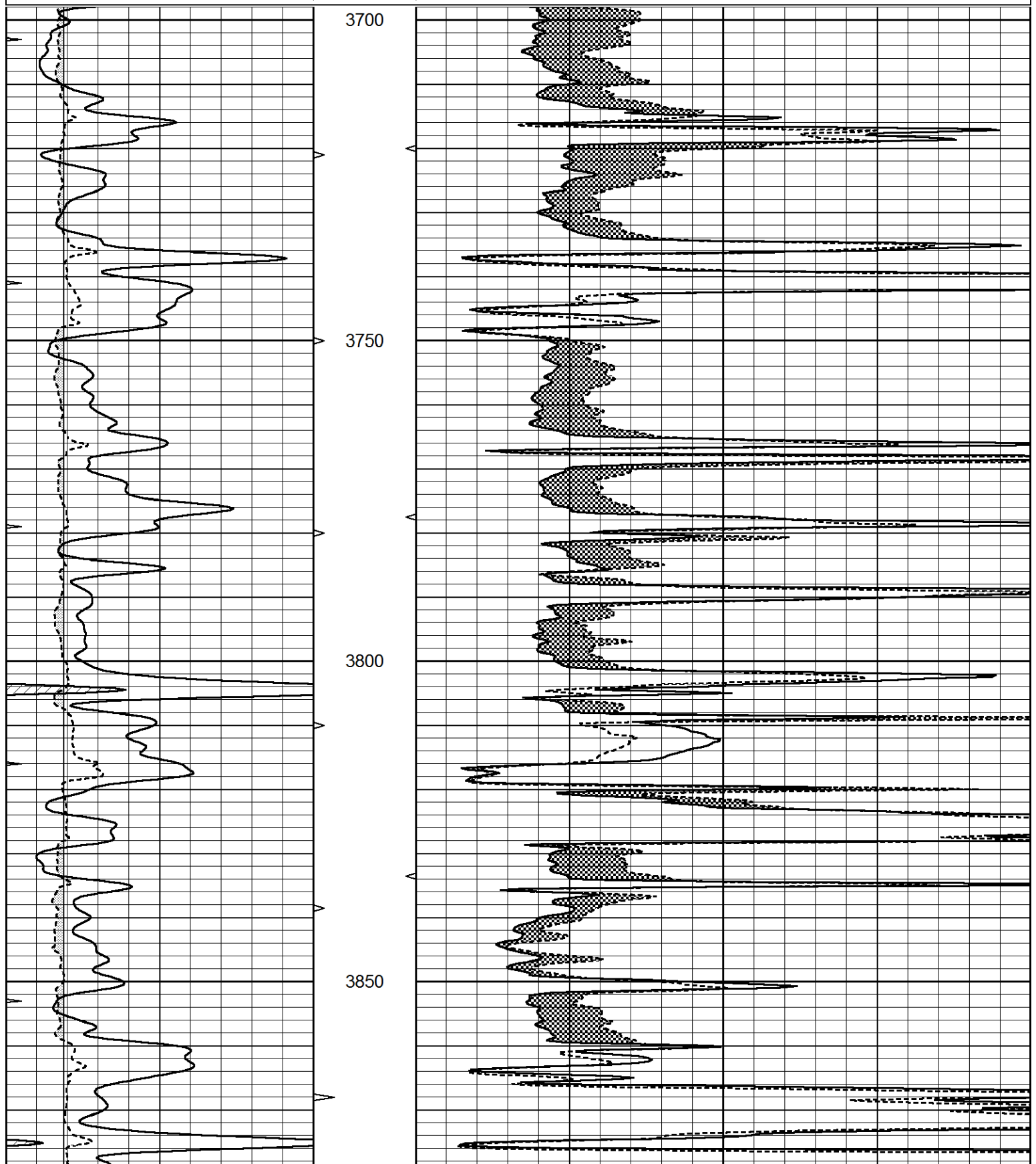
THANK YOU FOR USING ELI WIRELINE, HAYS, KS. (785) 628-6395
 DIRECTIONS:
 SCOTT CITY, KANSAS. 10 MILES SOUTH TO RD. 40, 9 MILES WEST TO
 CHEROKEE RD, 2 MILES SOUTH, 1/2 WEST, SOUTH INTO

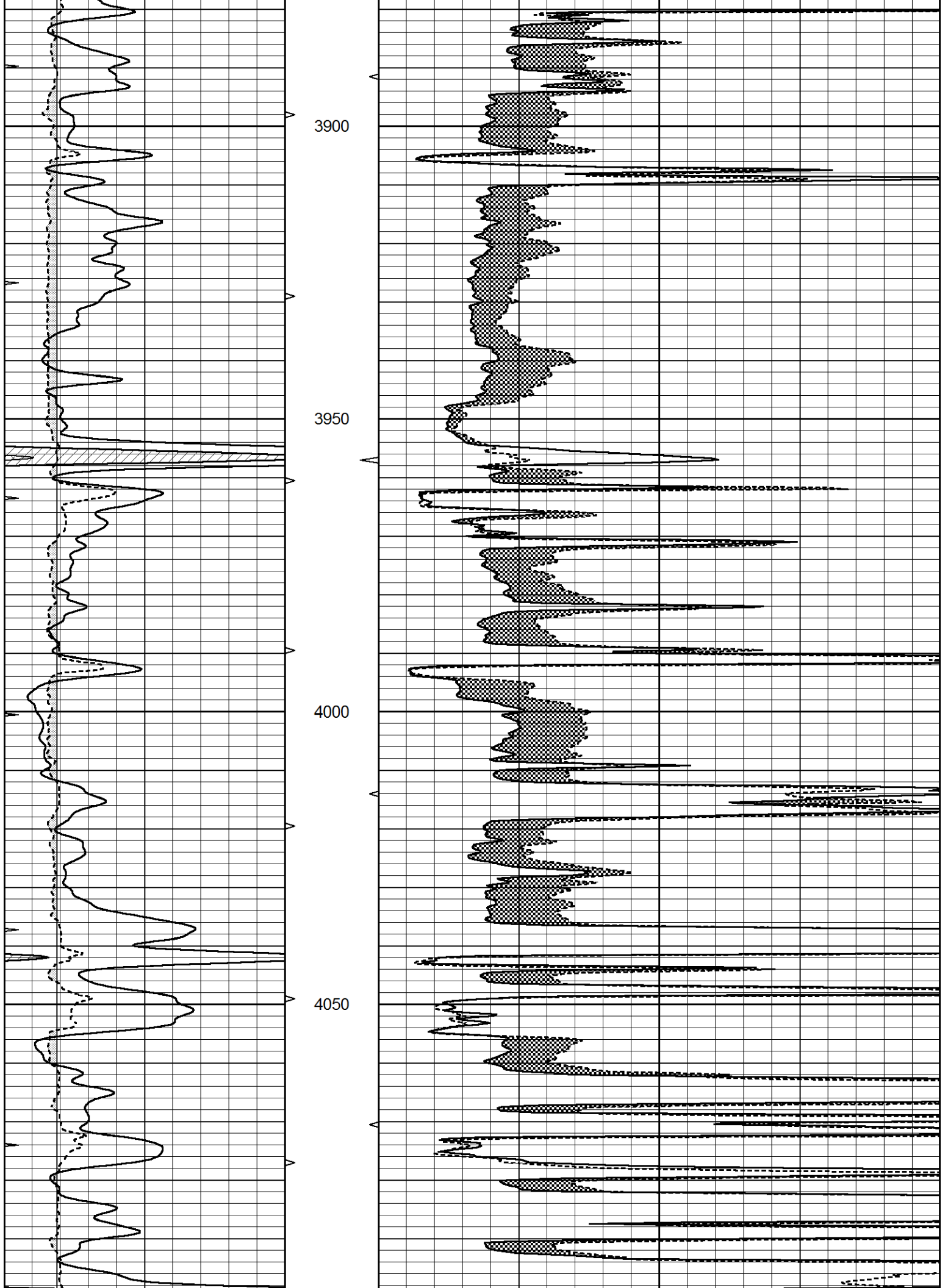


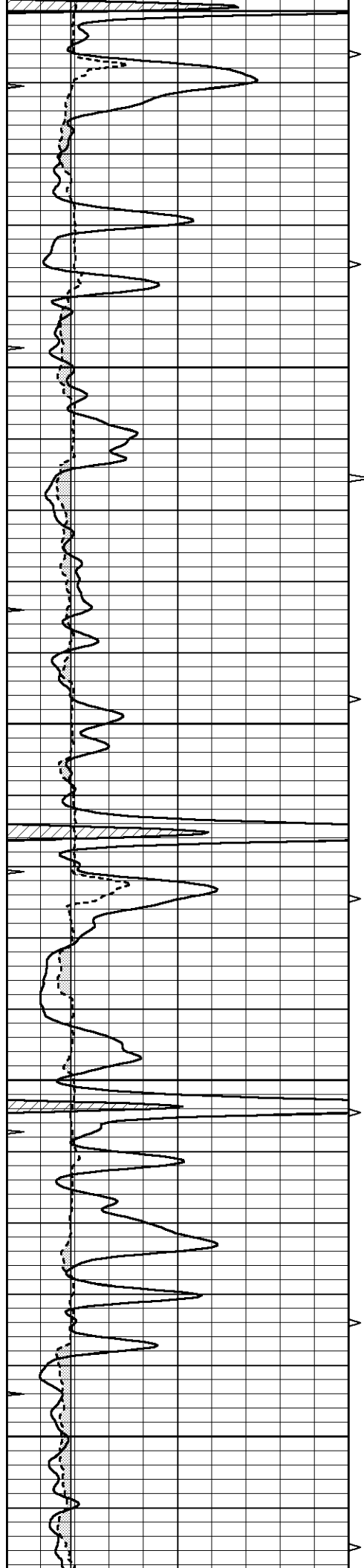
MAIN SECTION

Database File 5899ddn.db
 Dataset Pathname pass6.3M
 Presentation Format _micro
 Dataset Creation Fri May 06 18:42:13 2022
 Charted by Depth in Feet scaled 1:240

0	GAMMA RAY (GAPI)	150	ABHV	0	MEL1.5 (Ohm-m)	40
6	CALIPER (in)	16	10 (ft3)	0	MEL2.0 (Ohm-m)	40
0	MINMK	20	TBHV			
			0 (ft3)	10		







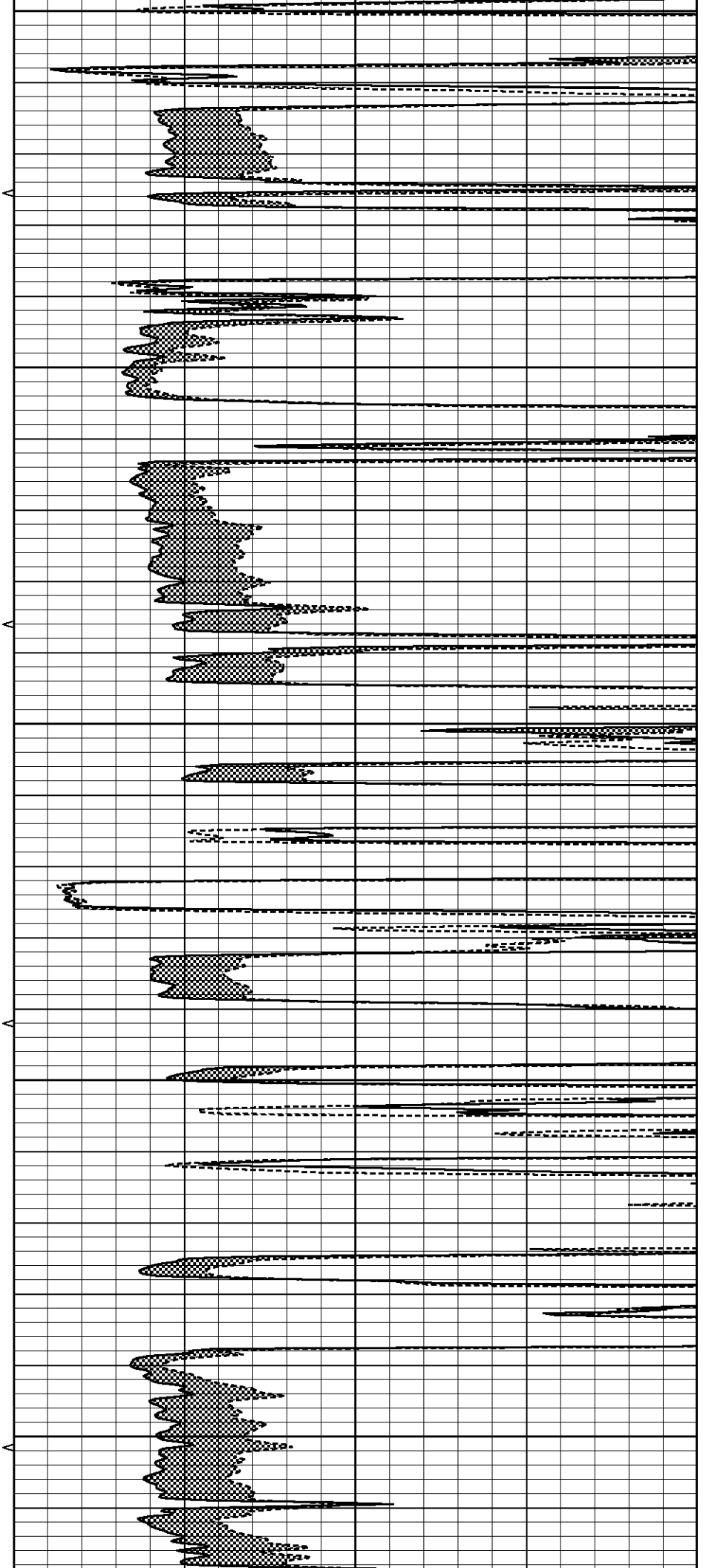
4100

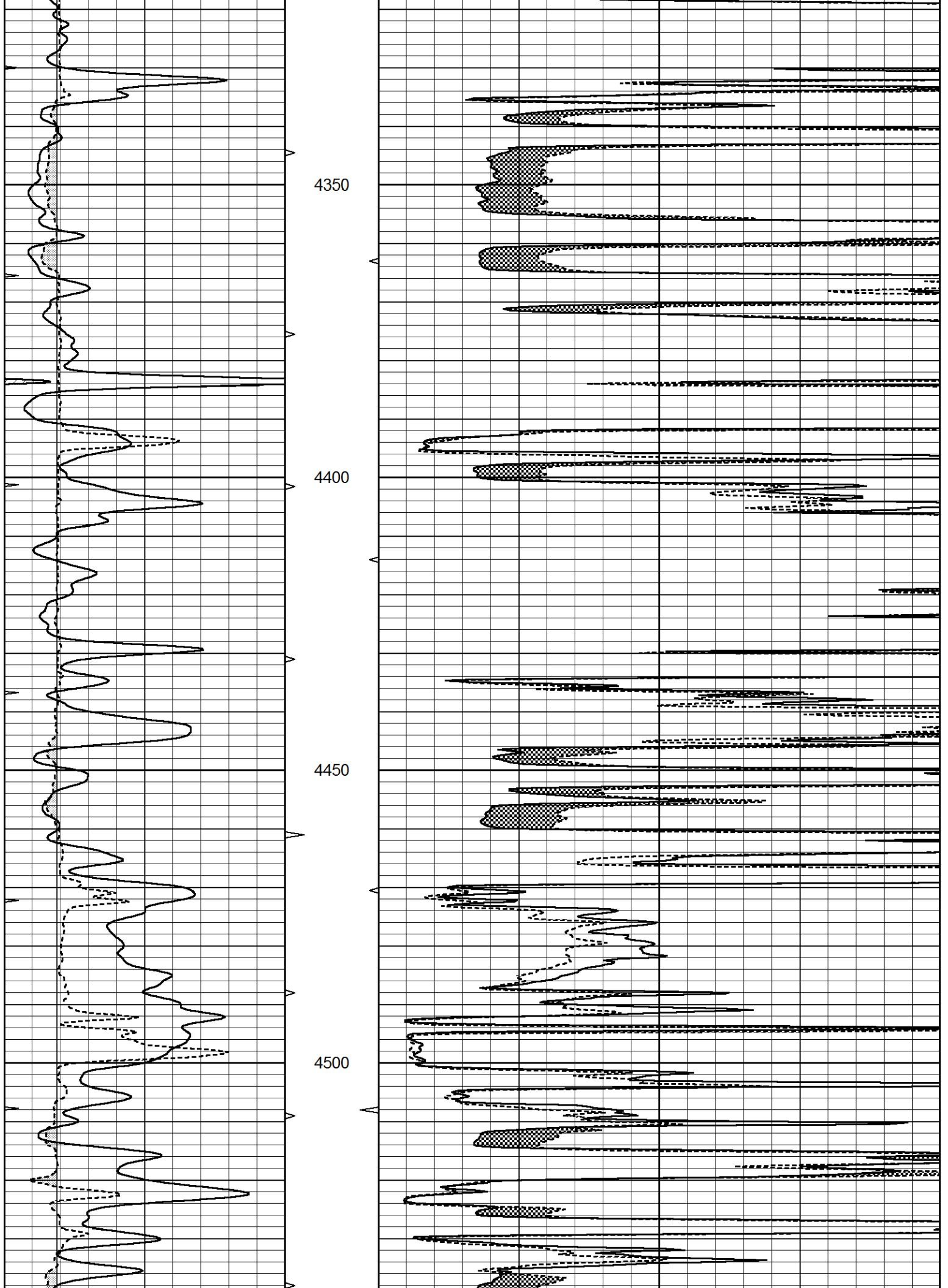
4150

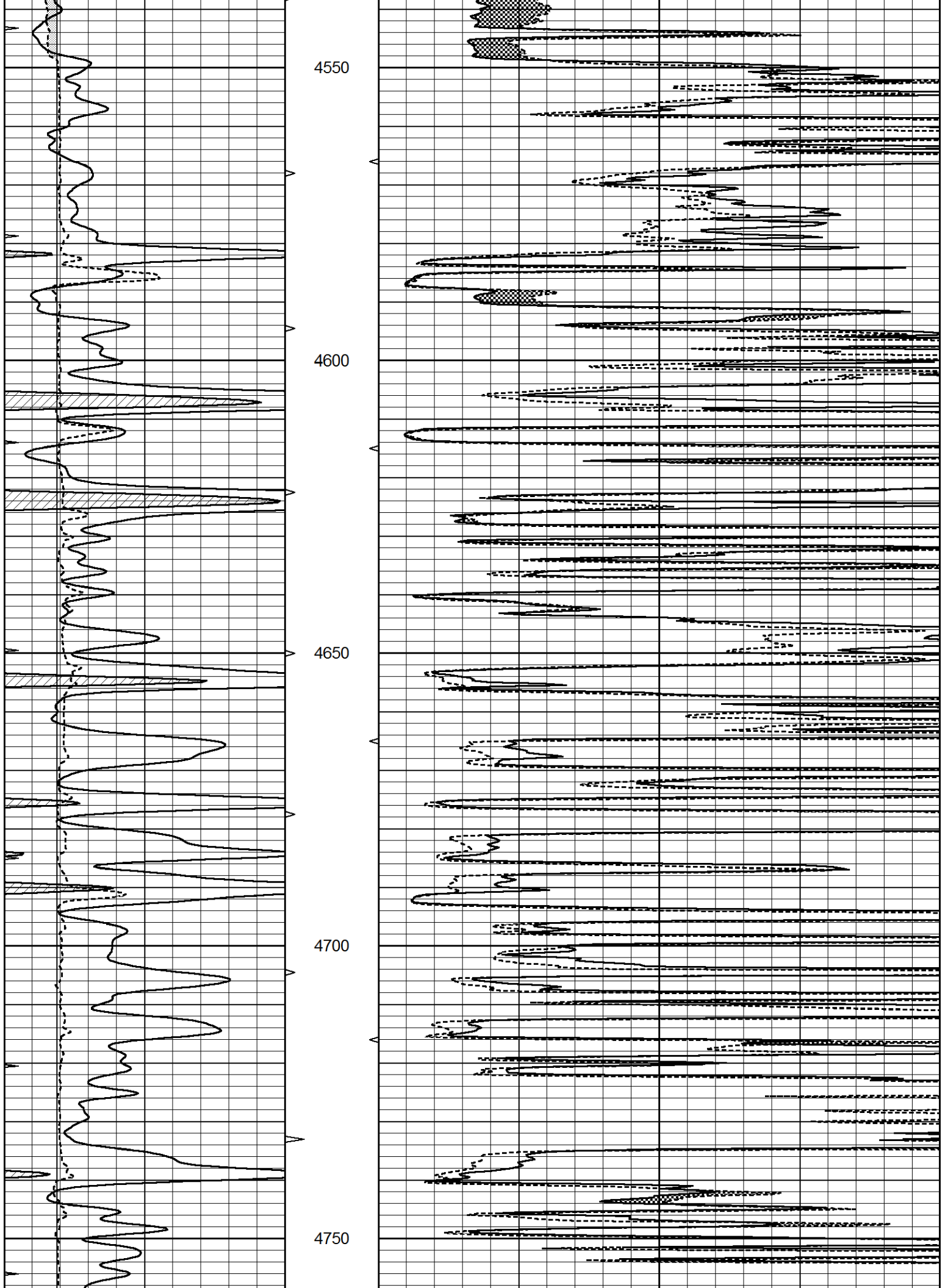
4200

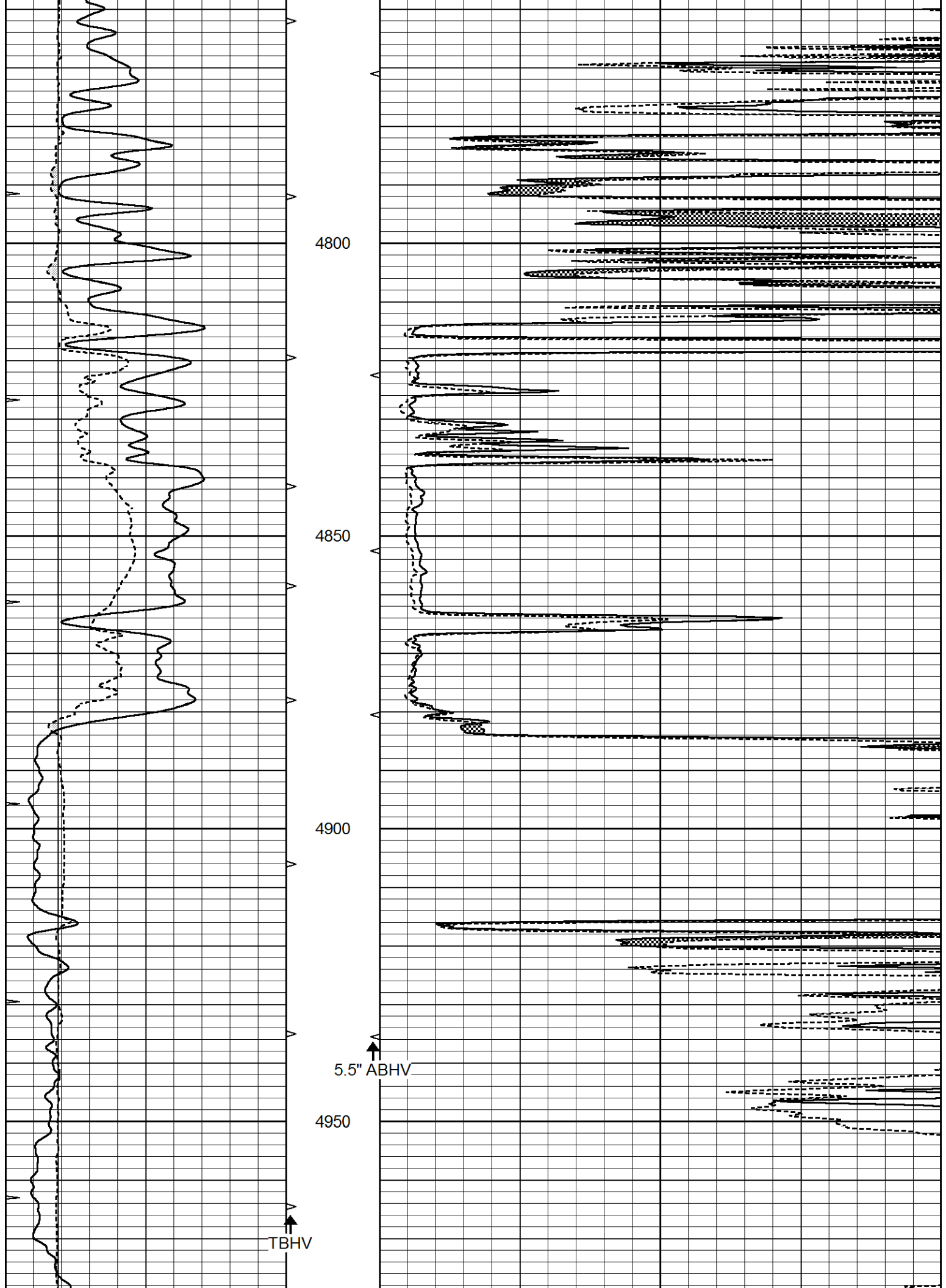
4250

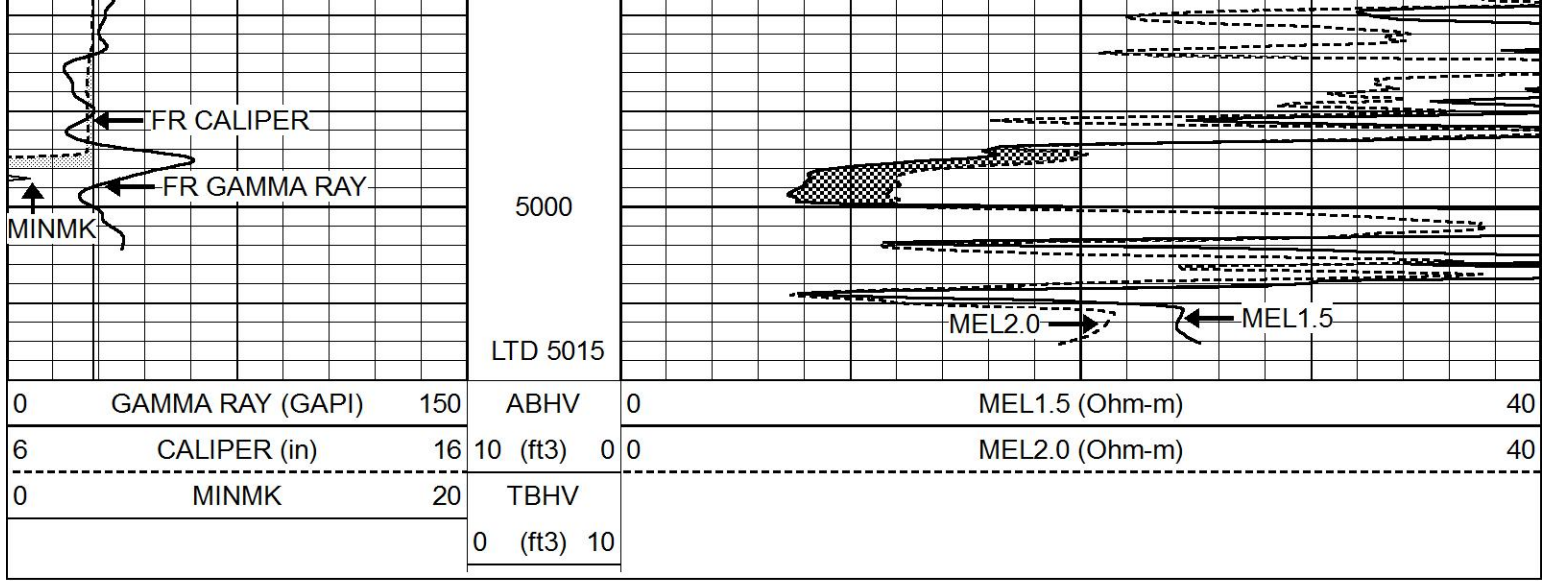
4300







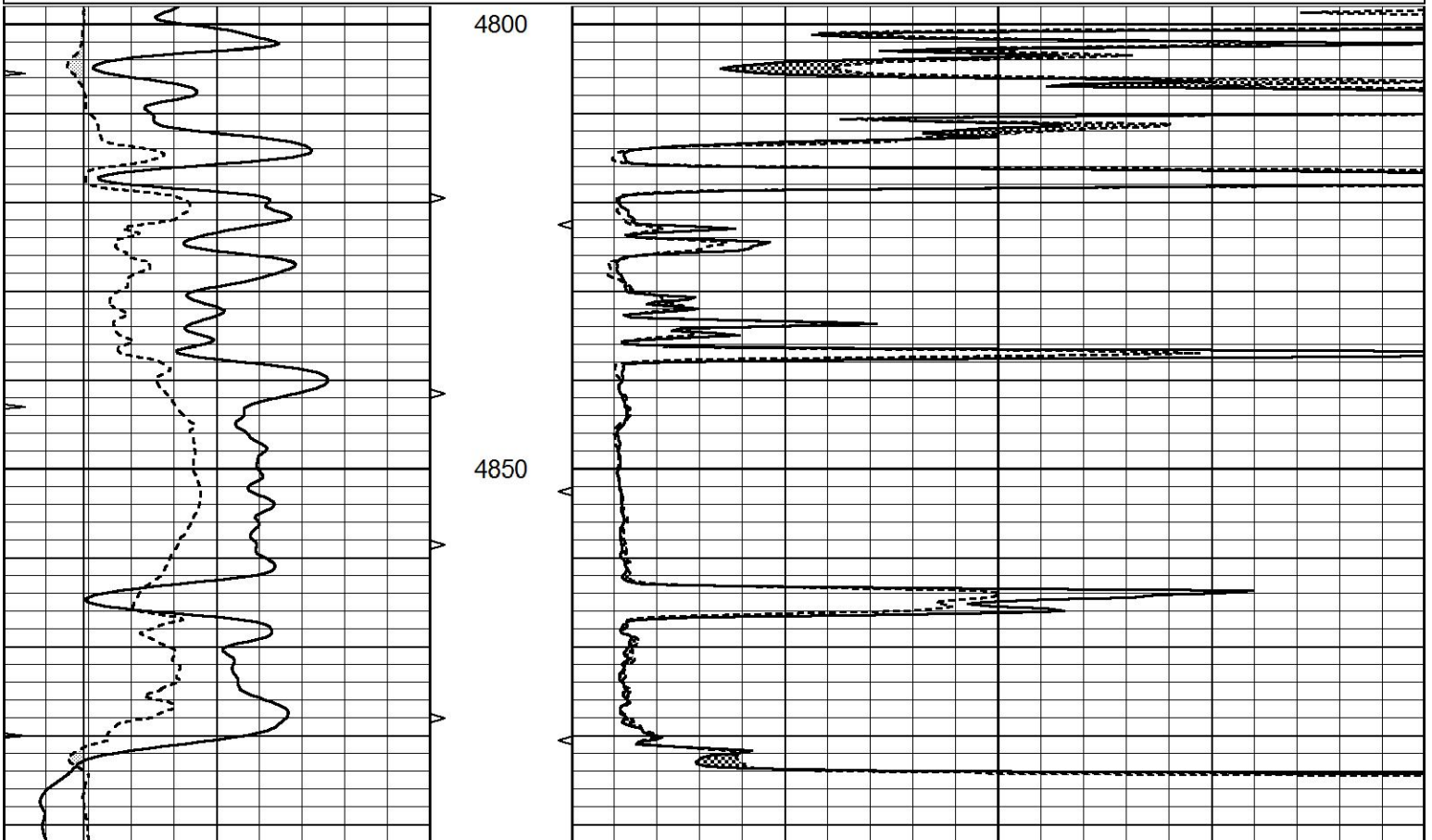


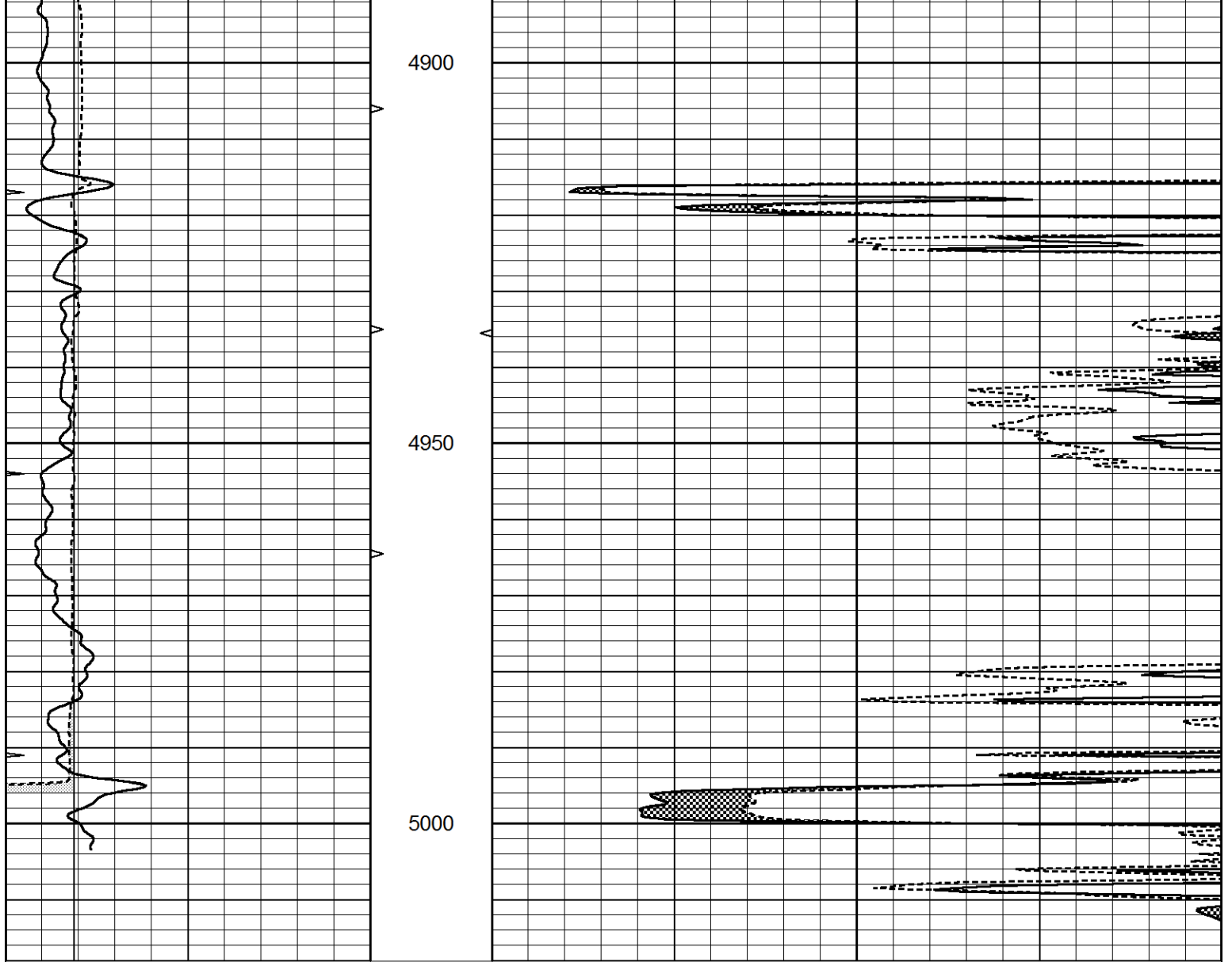


REPEAT SECTION

Database File 5899ddn.db
 Dataset Pathname pass5.4R
 Presentation Format _micro
 Dataset Creation Fri May 06 18:07:02 2022
 Charted by Depth in Feet scaled 1:240

0	GAMMA RAY (GAPI)	150	ABHV	0	MEL1.5 (Ohm-m)	40
6	CALIPER (in)	16	10 (ft3)	0	MEL2.0 (Ohm-m)	40
0	MINMK	20	TBHV			
			0 (ft3)	10		





0	GAMMA RAY (GAPI)	150	ABHV	0	MEL1.5 (Ohm-m)	40
6	CALIPER (in)	16	10 (ft3)	0	MEL2.0 (Ohm-m)	40
0	MINMK	20	TBHV			
			0 (ft3)	10		

Calibration Report

Database File 5899ddn.db
 Dataset Pathname pass6.3M
 Dataset Creation Fri May 06 18:42:13 2022

MICRO Calibration Report

Serial Number: MICRO5
 Tool Model: PROBE
 Performed: Fri Aug 09 14:18:04 2019

Caliper Calibration: Gain=3.843 Offset=-10.132

References Low Cal High Cal
 Readings 7.000 15.000
 4.458 6.539

1.5" Calibration: Gain=45.159 Offset=-0.295

References Low Cal High Cal
 Readings 0.000 20.000

References	0.000	20.000
Readings	0.015	1.007

2" Calibration:	Gain=70.000	Offset=-0.888
-----------------	-------------	---------------

	Low Cal	High Cal
References	0.000	20.000
Readings	0.008	0.908

Gamma Ray Calibration Report

Serial Number:	GR5	
Tool Model:	OPEN	
Performed:	Thu May 05 21:32:03 2022	
Calibrator Value:	1.0	GAPI
Background Reading:	0.0	cps
Calibrator Reading:	1.0	cps
Sensitivity:	0.6000	GAPI/cps