



# DUAL INDUCTION LOG

Company PALOMINO PETROLEUM, INC.

Well KELLY CRIST #3

Field UNNAMED

County SCOTT State KANSAS

Location: API #: 15-171-21287-0000

NW-NW-NW-NE  
181' FNL & 244' FEL

SEC 28 TWP 20S RGE 34W

Permanent Datum GROUND LEVEL Elevation 3079

Log Measured From KELLY BUSHING 10' A.G.L.  
Drilling Measured From KELLY BUSHING

Other Services  
CDL/CNL  
MEL

Elevation

K.B. 3090  
D.F. 3088  
G.L. 3079

Date	5/6/22
Run Number	ONE
Depth Driller	5015
Depth Logger	5015
Bottom Logged Interval	5013
Top Log Interval	00
Casing Driller	8 5/8" @ 227'
Casing Logger	227
Bit Size	7 7/8"
Type Fluid in Hole	CHEMICAL MUD
Density / Viscosity	9.5/62
pH / Fluid Loss	9.0/9.6
Source of Sample	FLOWLINE
Rm @ Meas. Temp	.650 @ 65F
Rmf @ Meas. Temp	.488 @ 65F
Rmc @ Meas. Temp	.780 @ 65F
Source of Rmf / Rmc	MEASURED
Rm @ BHT	.338 @ 125F
Time Circulation Stopped	3 HOURS
Time Logger on Bottom	3:30 P.M.
Maximum Recorded Temperature	125F
Equipment Number	8916
Location	HAYS, KANSAS
Recorded By	JEFF LUEBBERS
Witnessed By	RYAN SEIB
	COLE ROBBEN

<<< Fold Here >>>

All interpretations are opinions based on inferences from electrical or other measurements and we cannot and do not guarantee the accuracy or correctness of any interpretation, and we shall not, except in the case of gross or willful negligence on our part, be liable or responsible for any loss, costs, damages, or expenses incurred or sustained by anyone resulting from any interpretation made by any of our officers, agents or employees. These interpretations are also subject to our general terms and conditions set out in our current Price Schedule.

### Comments

THANK YOU FOR USING ELI WIRELINE, HAYS, KS. (785) 628-6395  
DIRECTIONS:  
SCOTT CITY, KANSAS. 10 MILES SOUTH TO RD. 40, 9 MILES WEST TO  
CHEROKEE RD, 2 MILES SOUTH, 1/2 WEST, SOUTH INTO

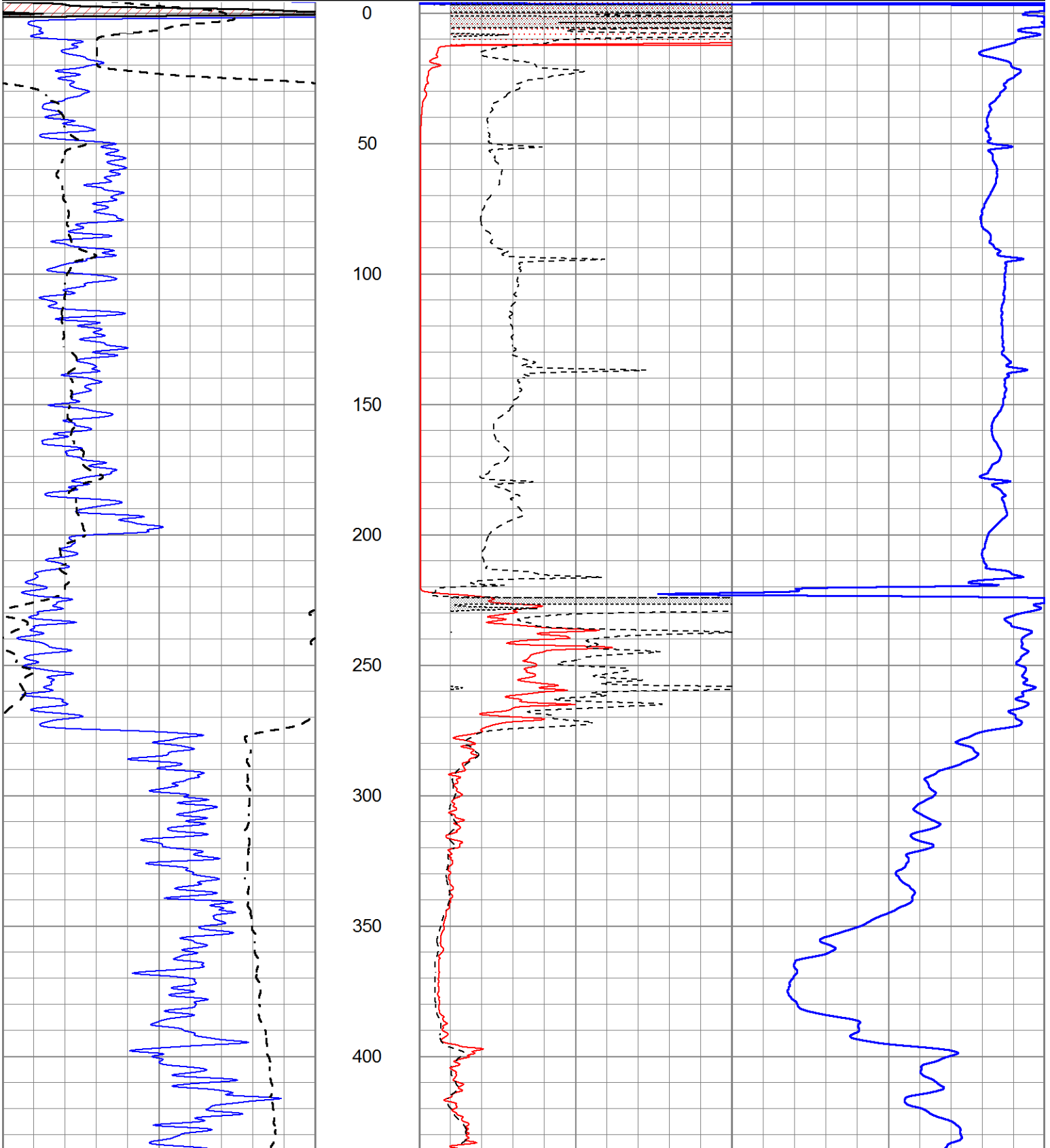


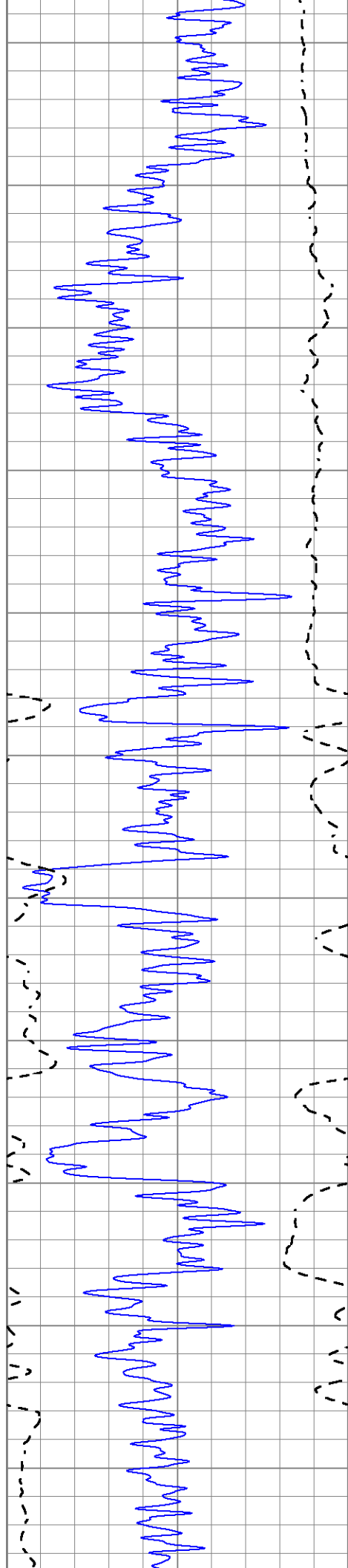
# MAIN SECTION

Database File 5899ddn.db  
 Dataset Pathname pass3.4  
 Presentation Format \_dil2  
 Dataset Creation Fri May 06 16:56:39 2022  
 Charted by Depth in Feet scaled 1:600

0	Gamma Ray (GAPI)	150
-100	SP (mV)	100

1000	CILD (mmho/m)	0
0	RLL3 (Ohm-m)	50
0	RILD (Ohm-m)	50
50	RILD X10 (Ohm-m)	500
50	RLL3 X10 (Ohm-m)	500





450

500

550

600

650

700

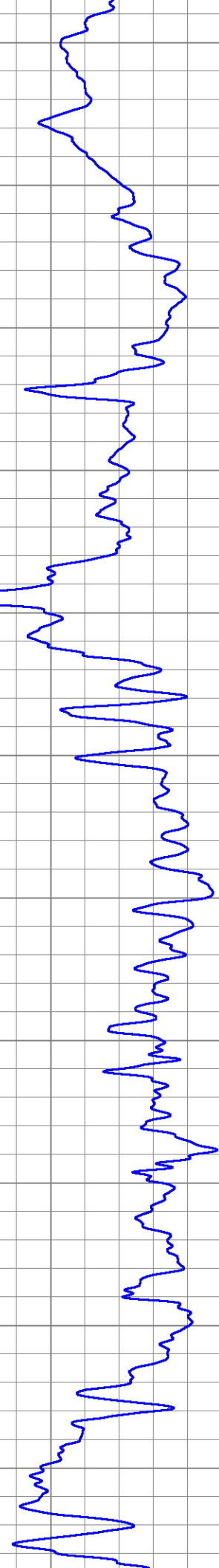
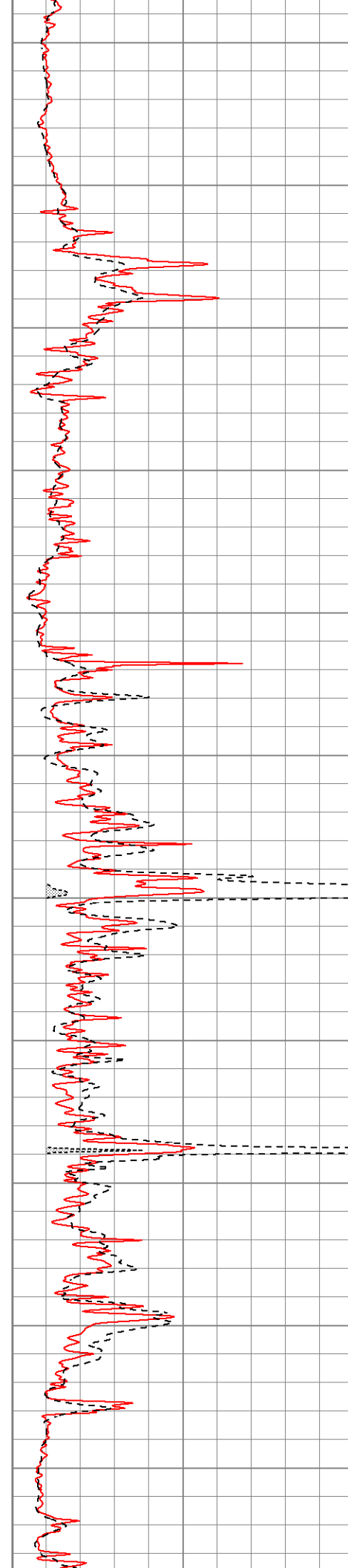
750

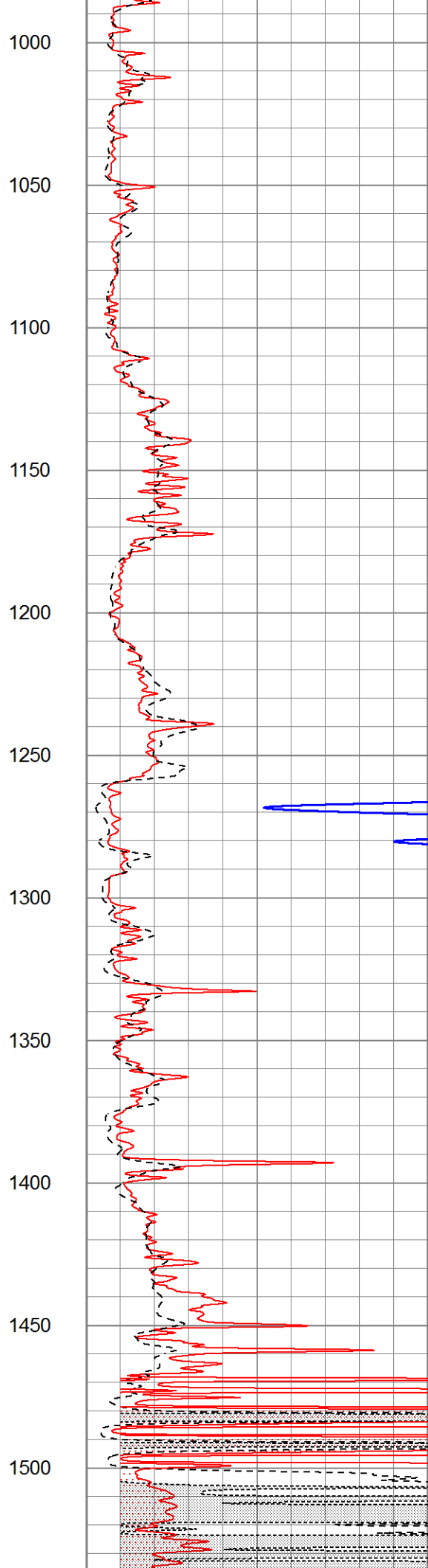
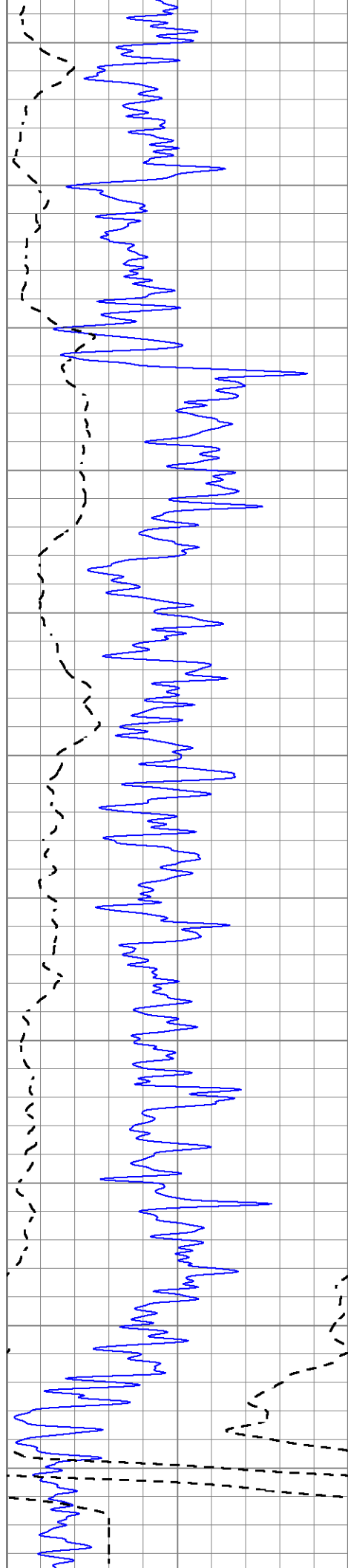
800

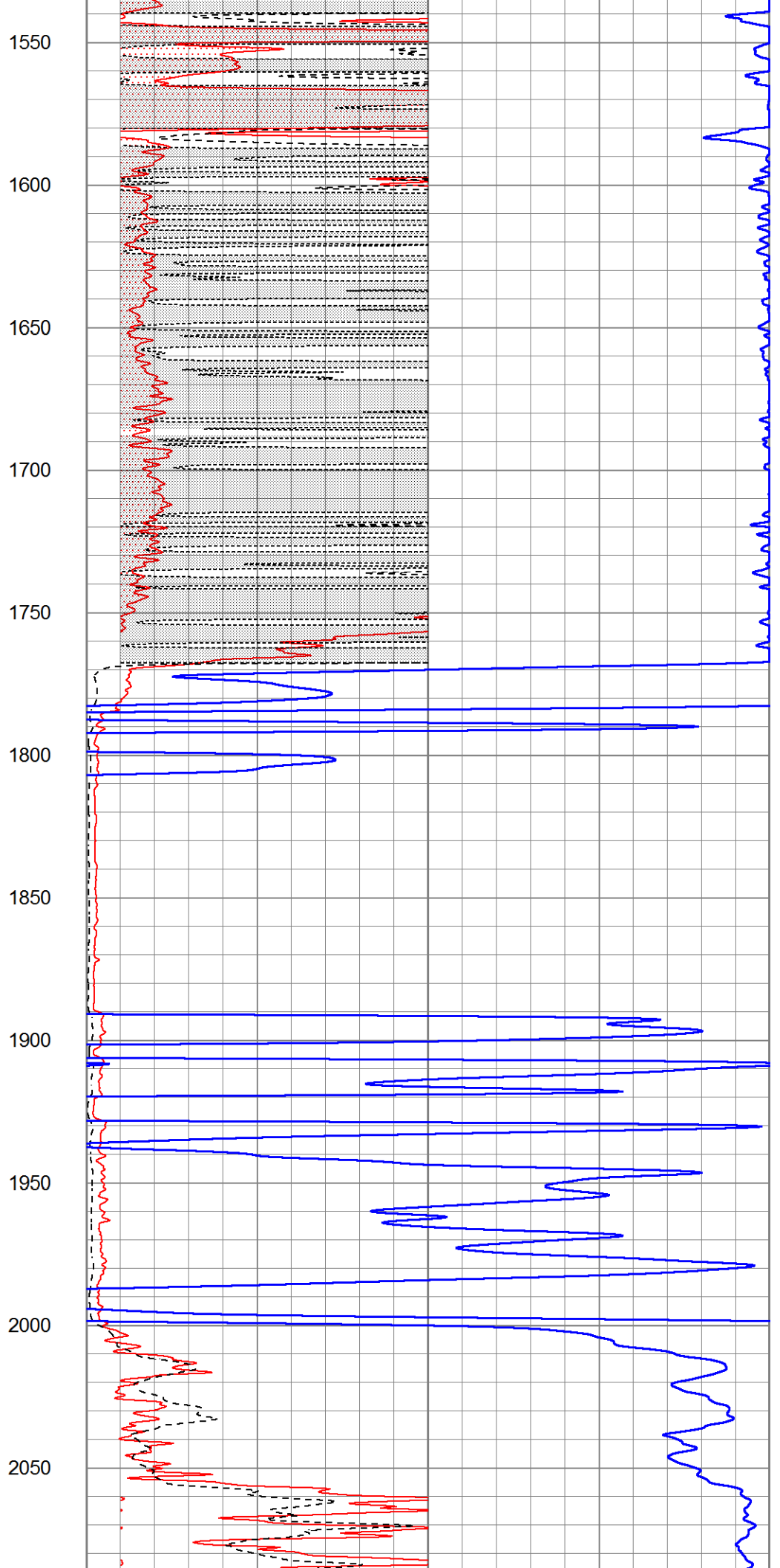
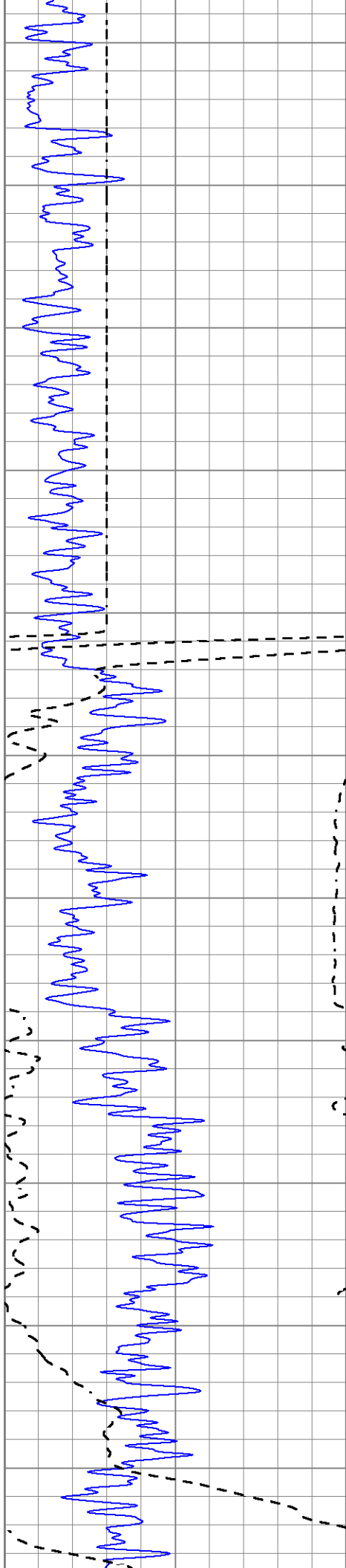
850

900

950







1550

1600

1650

1700

1750

1800

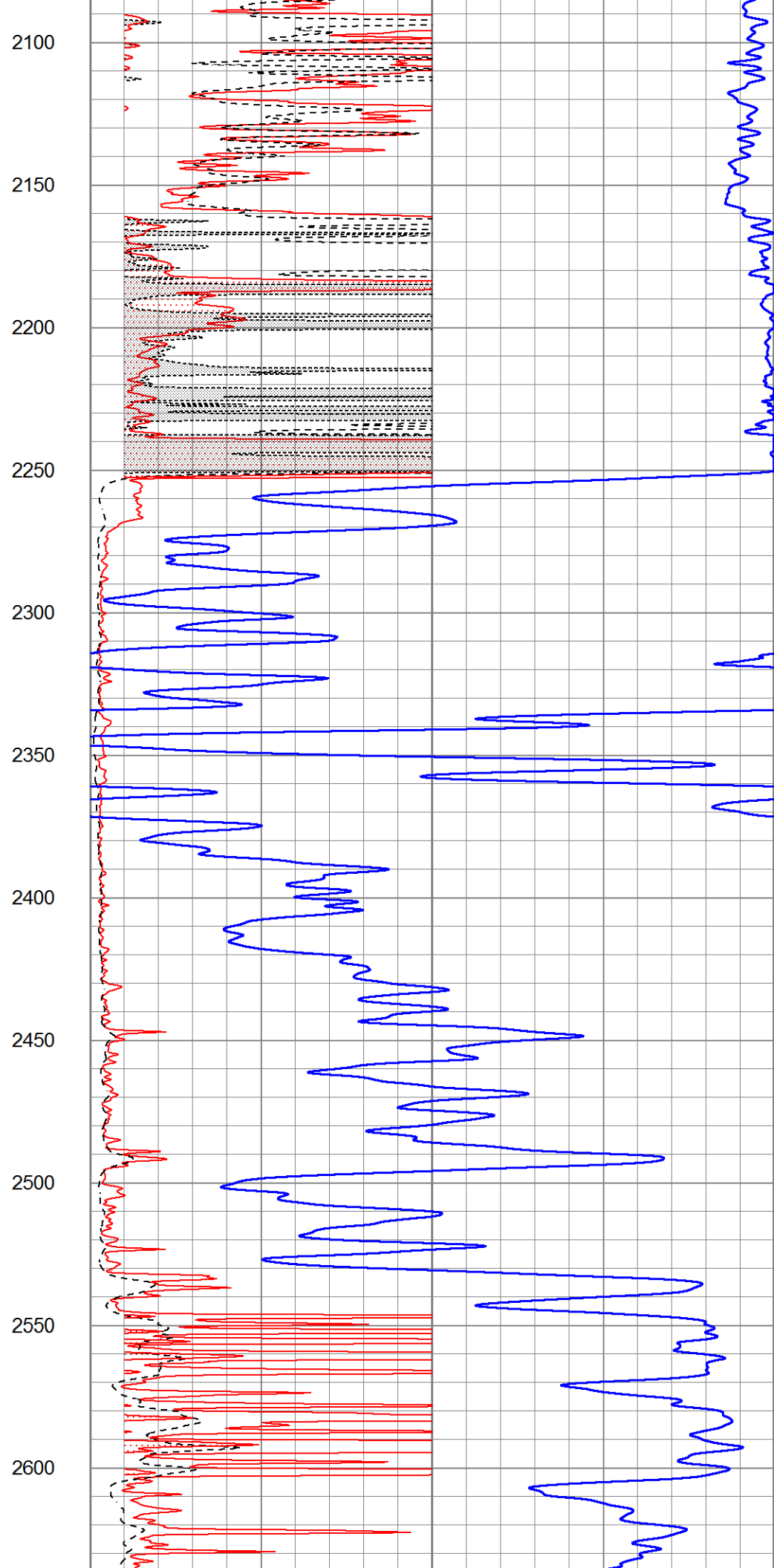
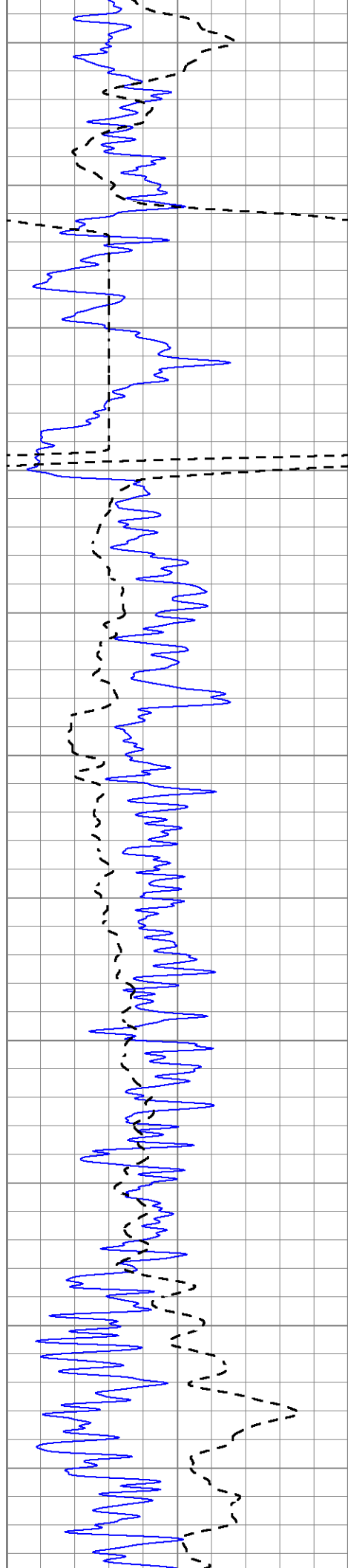
1850

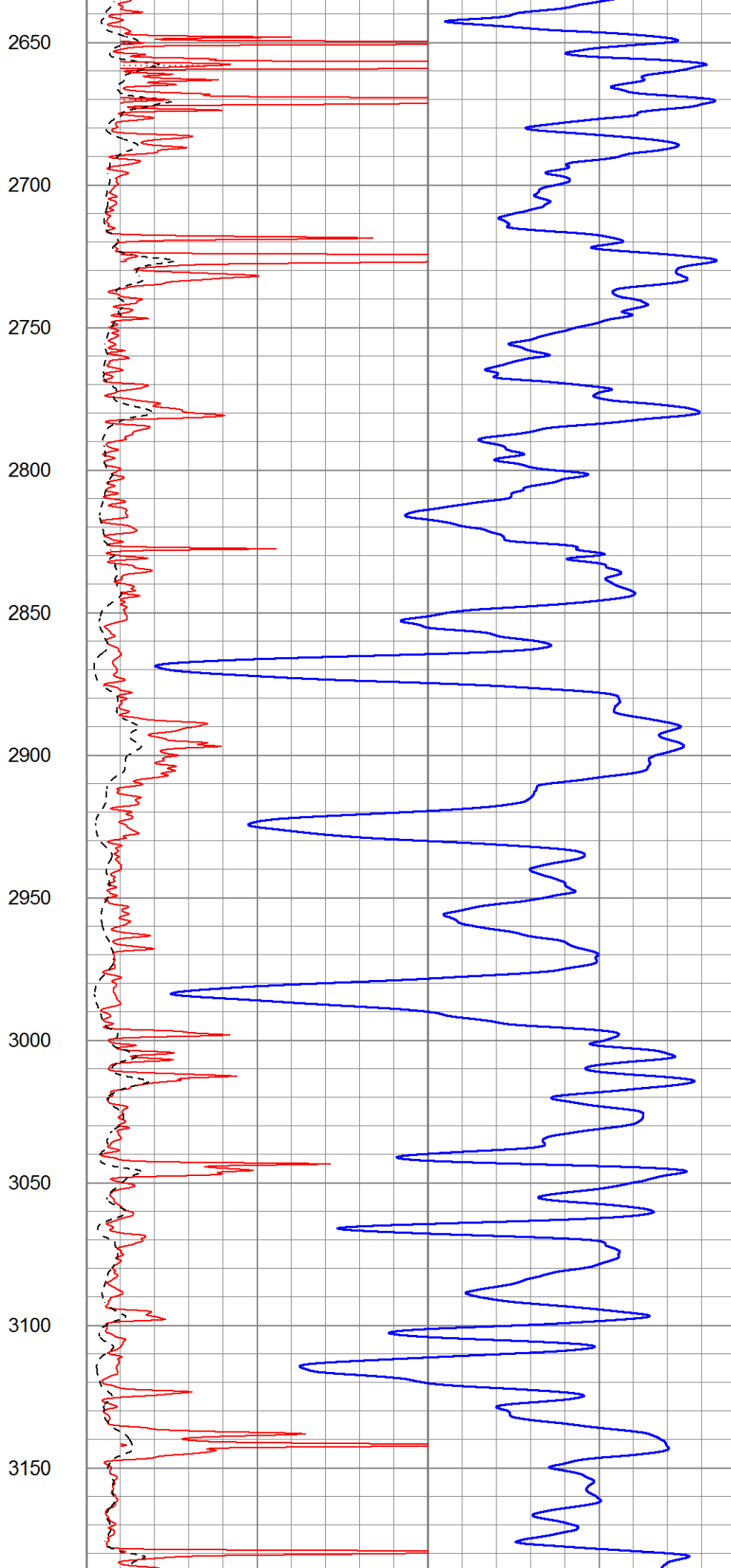
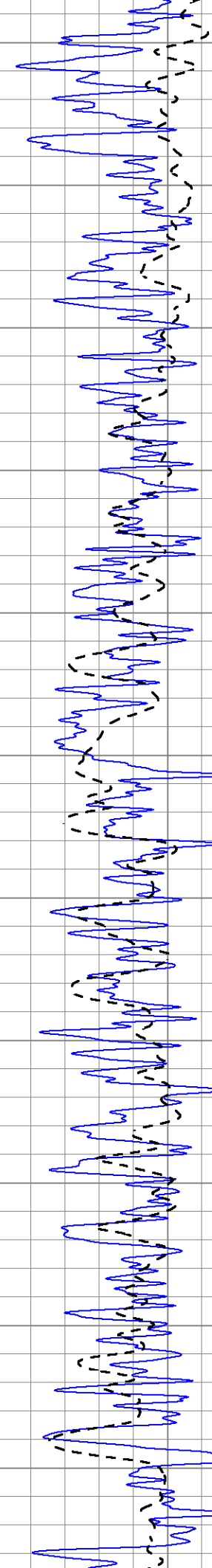
1900

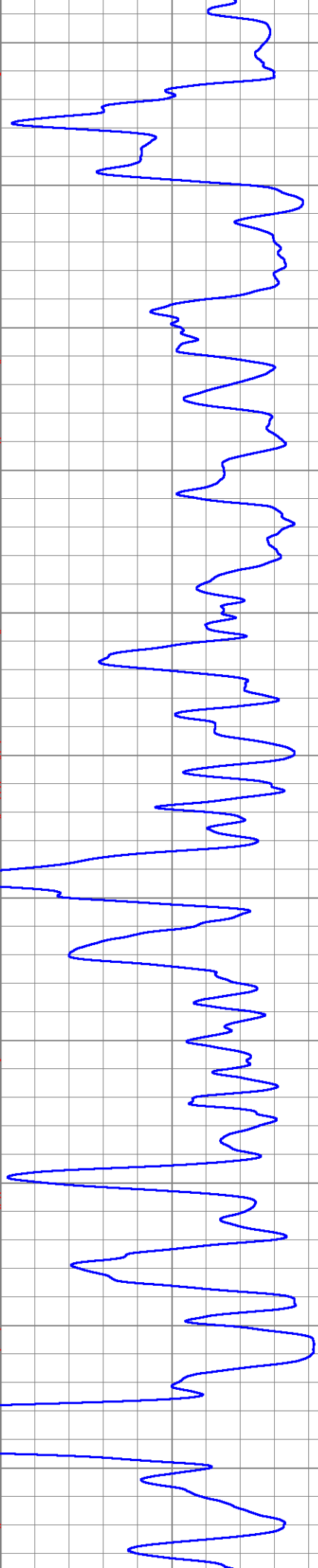
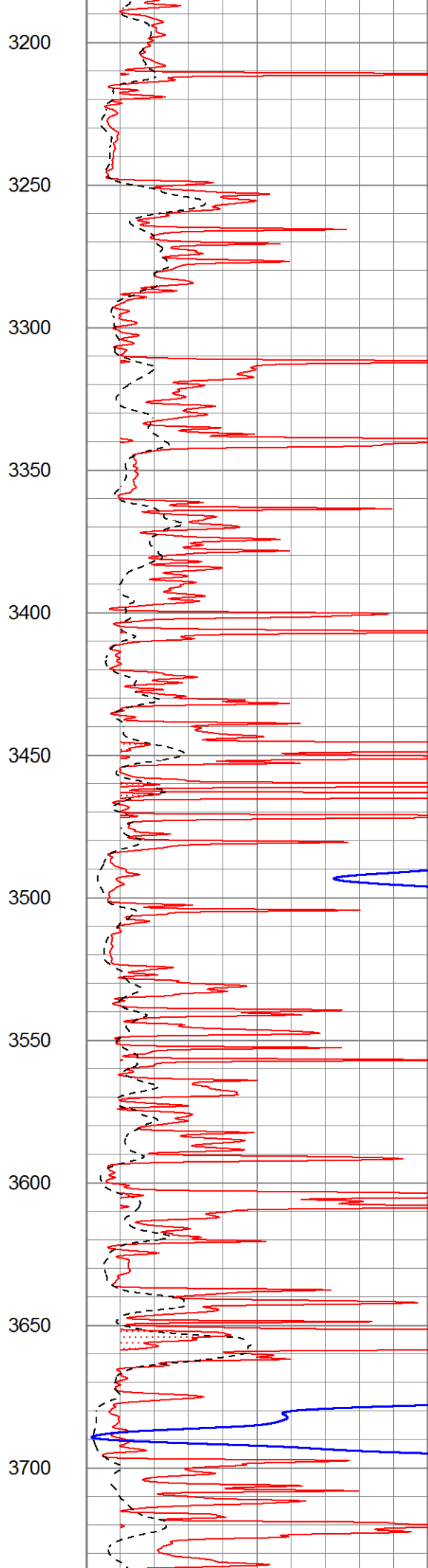
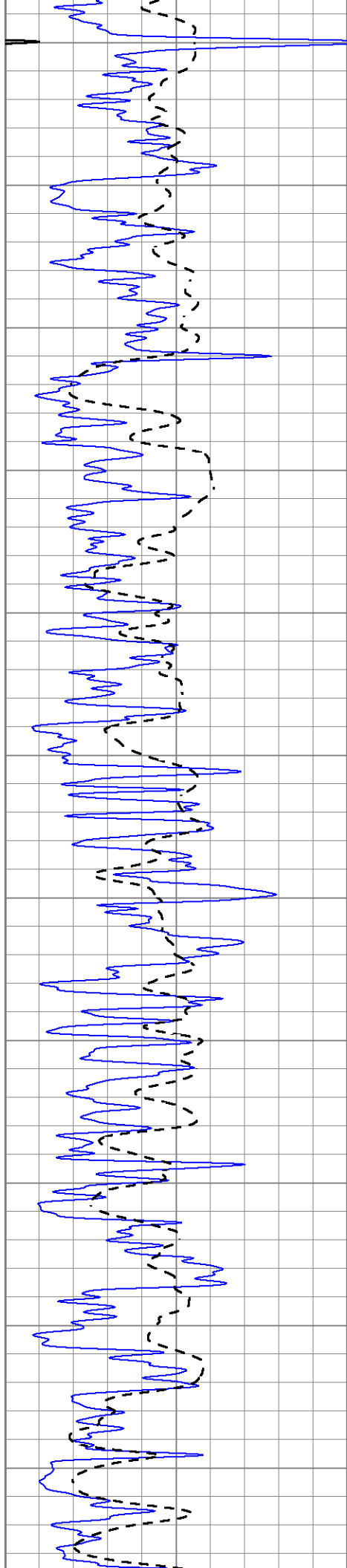
1950

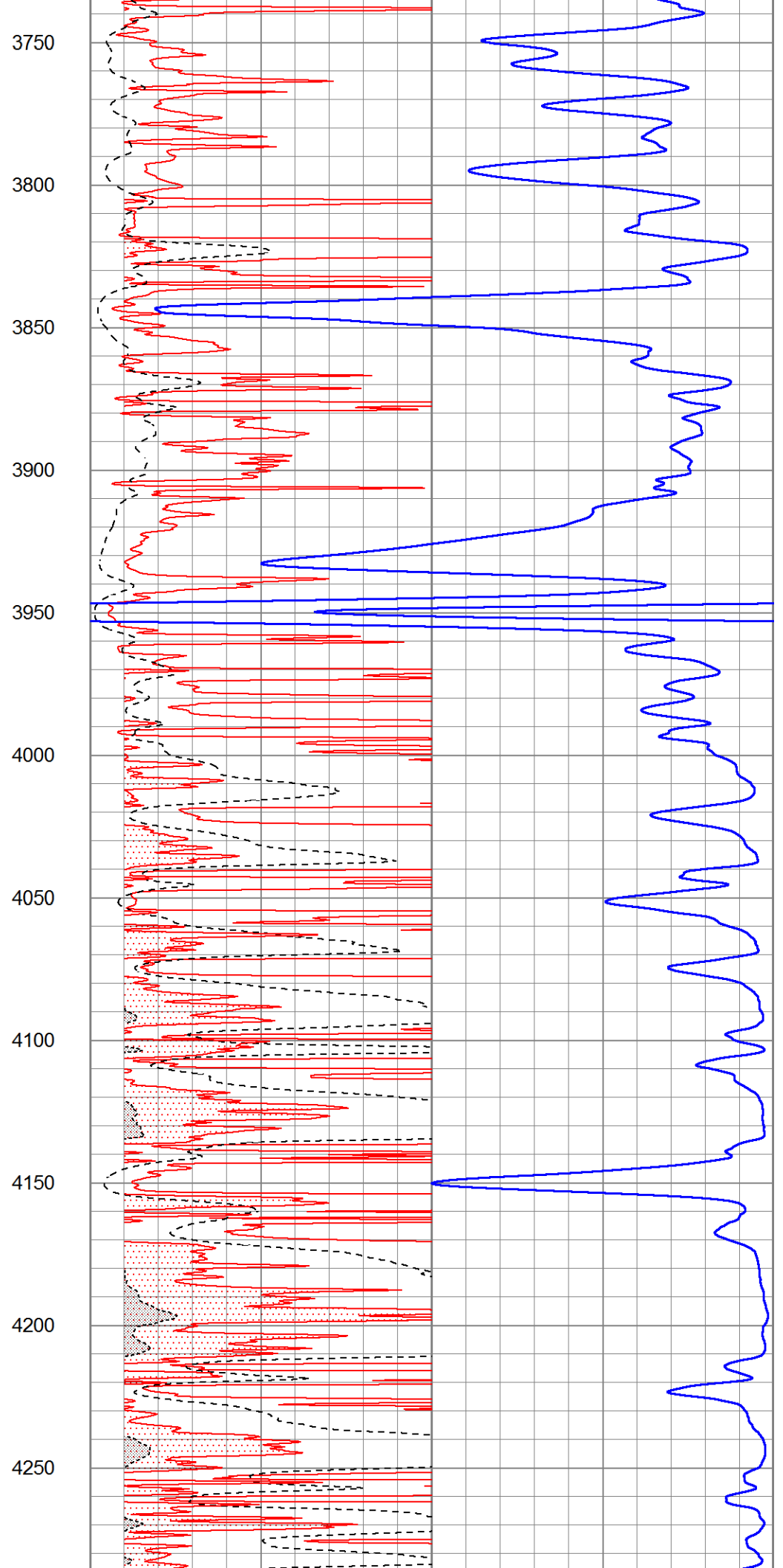
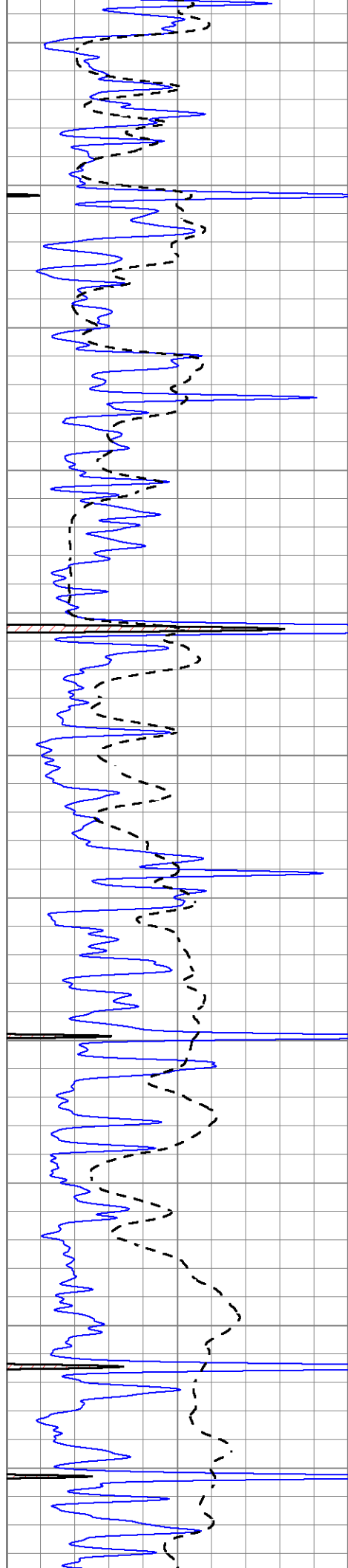
2000

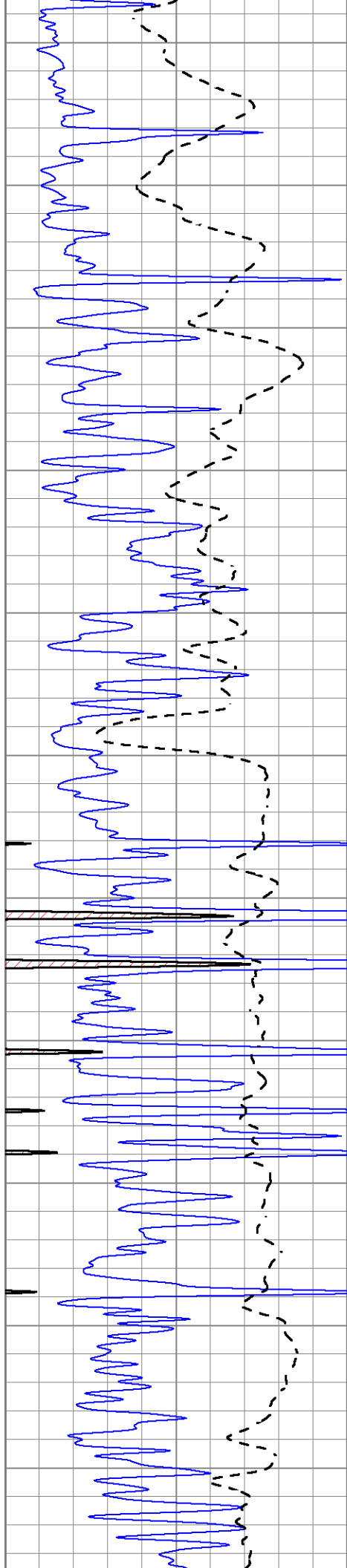
2050











4300

4350

4400

4450

4500

4550

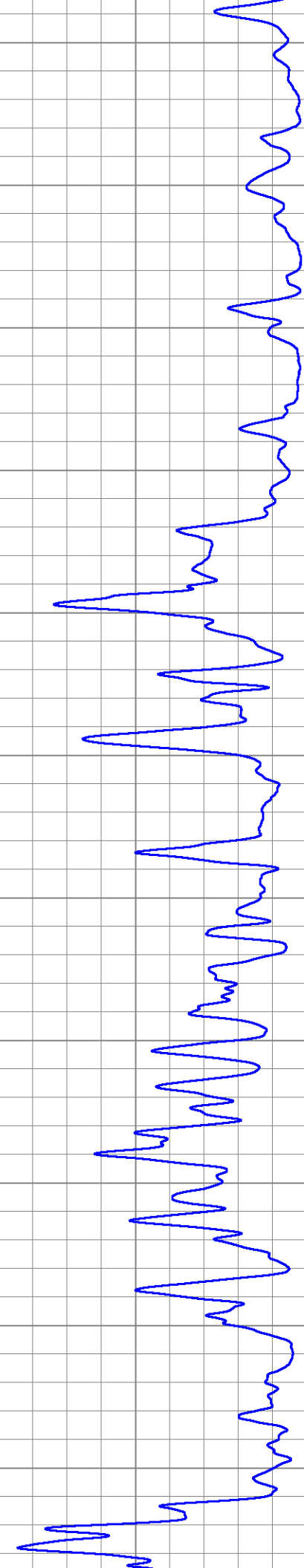
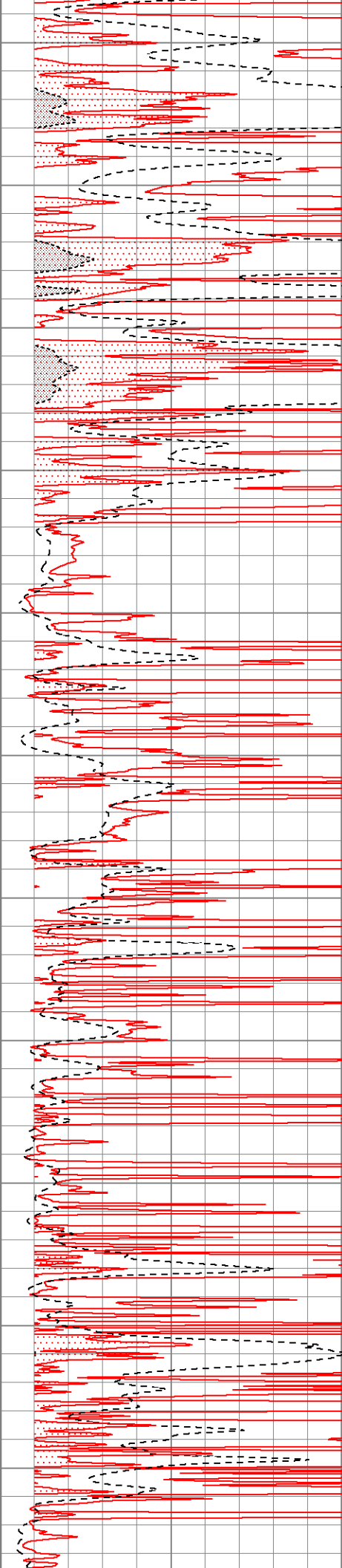
4600

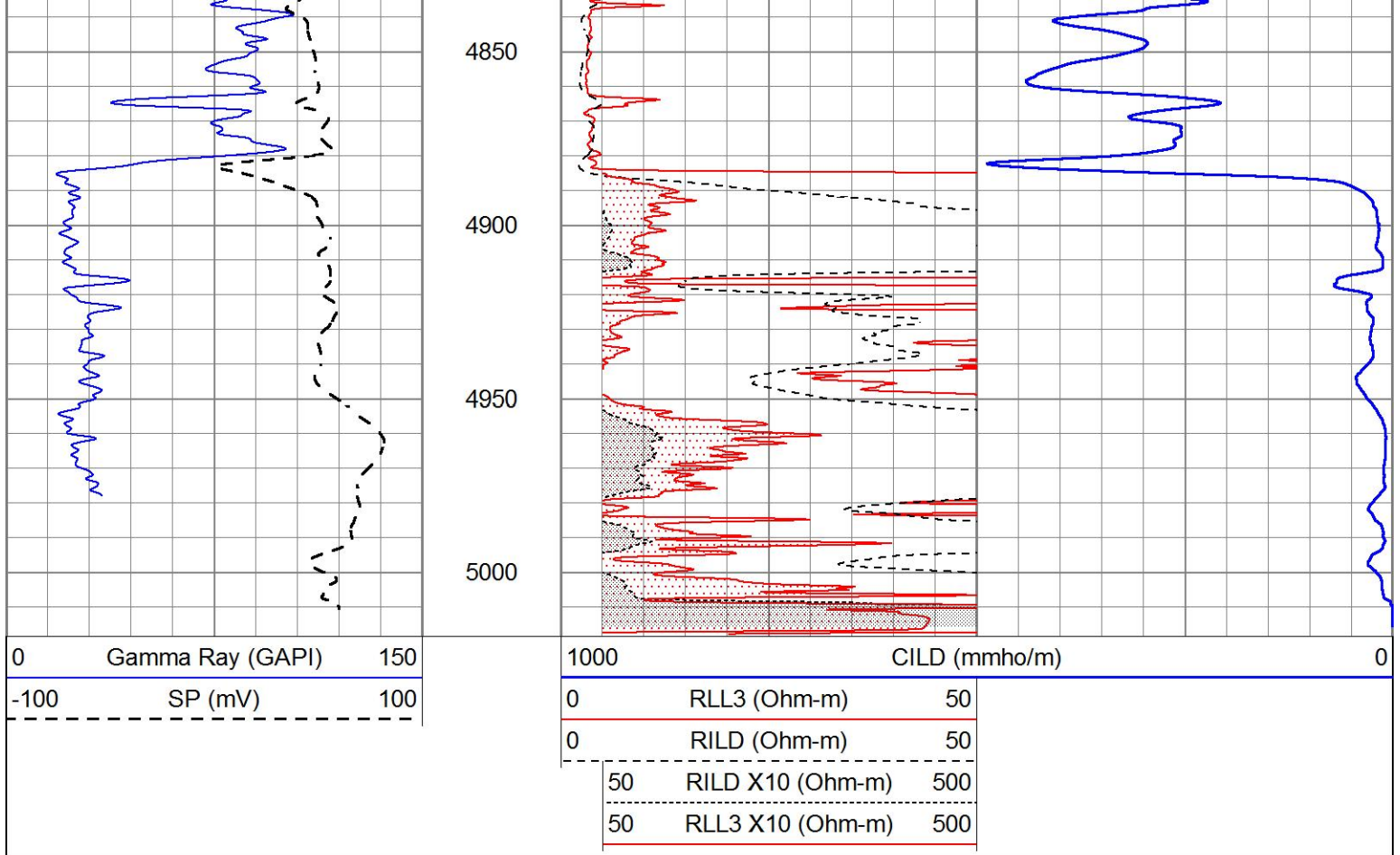
4650

4700

4750

4800



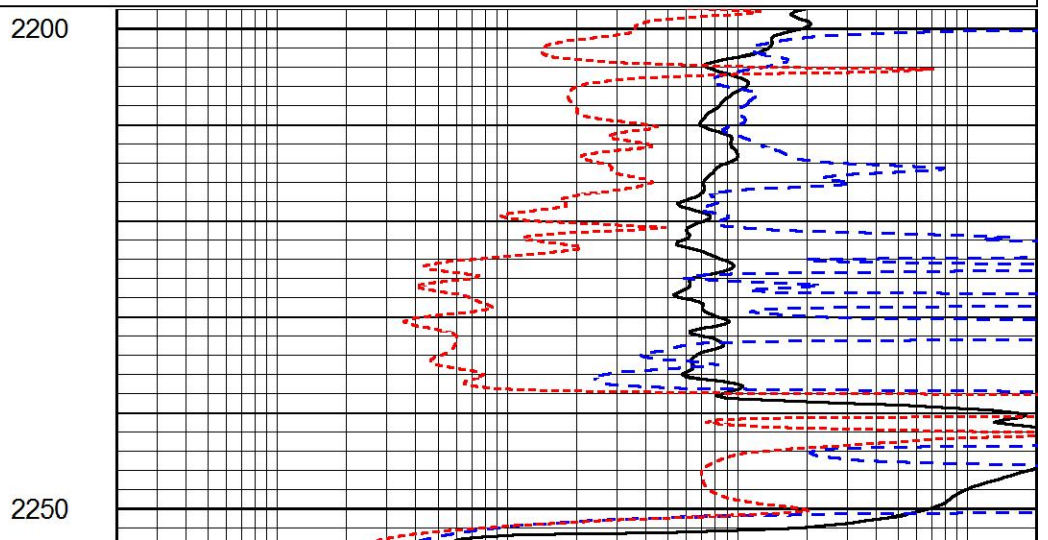
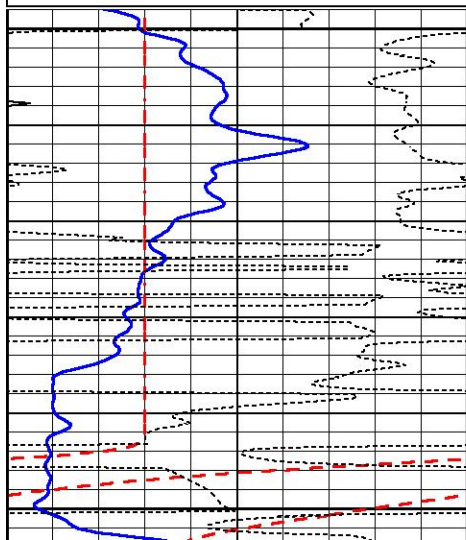


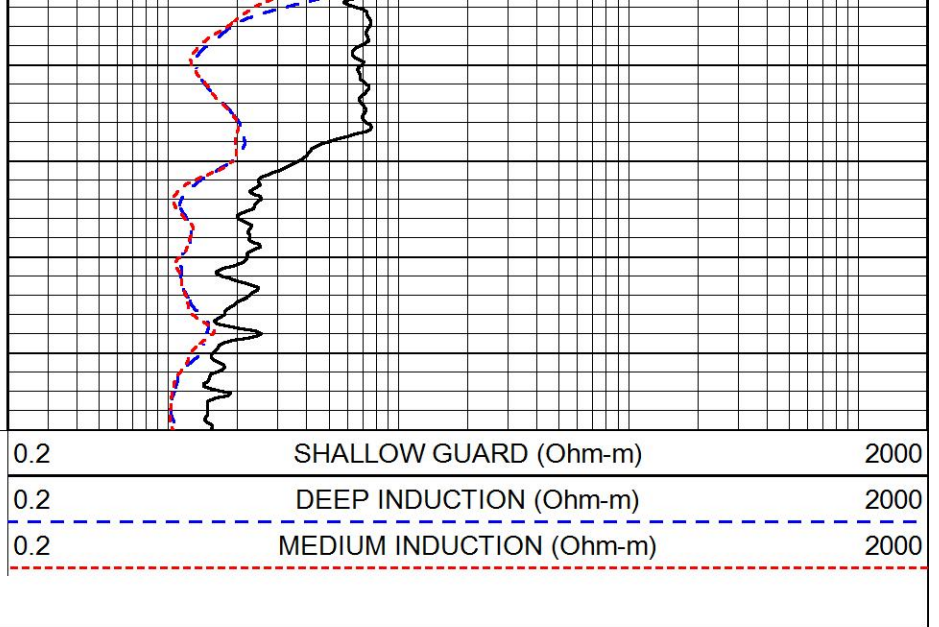
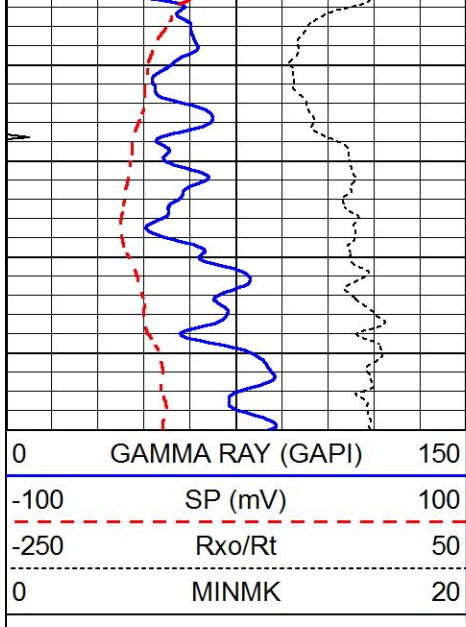
# ANHYDRITE

Database File 5899ddn.db  
 Dataset Pathname pass3.1A  
 Presentation Format \_dil  
 Dataset Creation Fri May 06 17:11:11 2022  
 Charted by Depth in Feet scaled 1:240

0	GAMMA RAY (GAPI)	150
-100	SP (mV)	100
-250	Rxo/Rt	50
0	MINMK	20

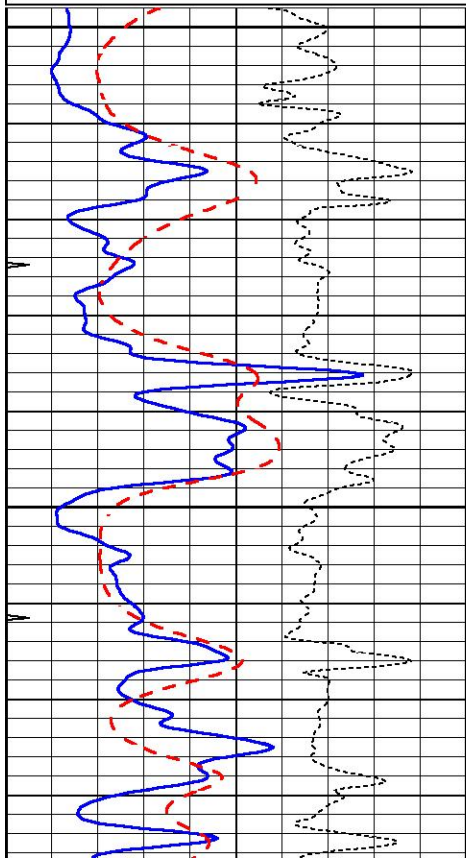
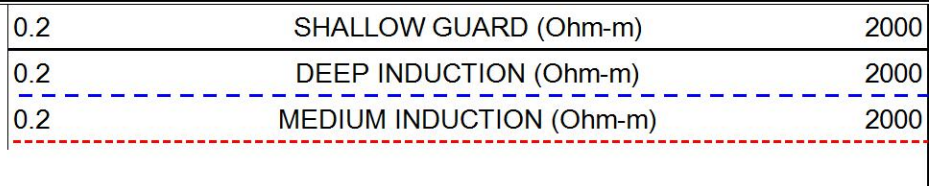
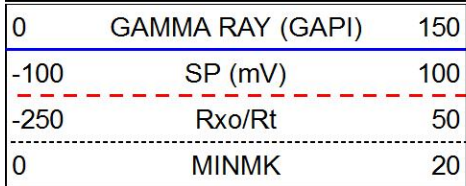
0.2	SHALLOW GUARD (Ohm-m)	2000
0.2	DEEP INDUCTION (Ohm-m)	2000
0.2	MEDIUM INDUCTION (Ohm-m)	2000





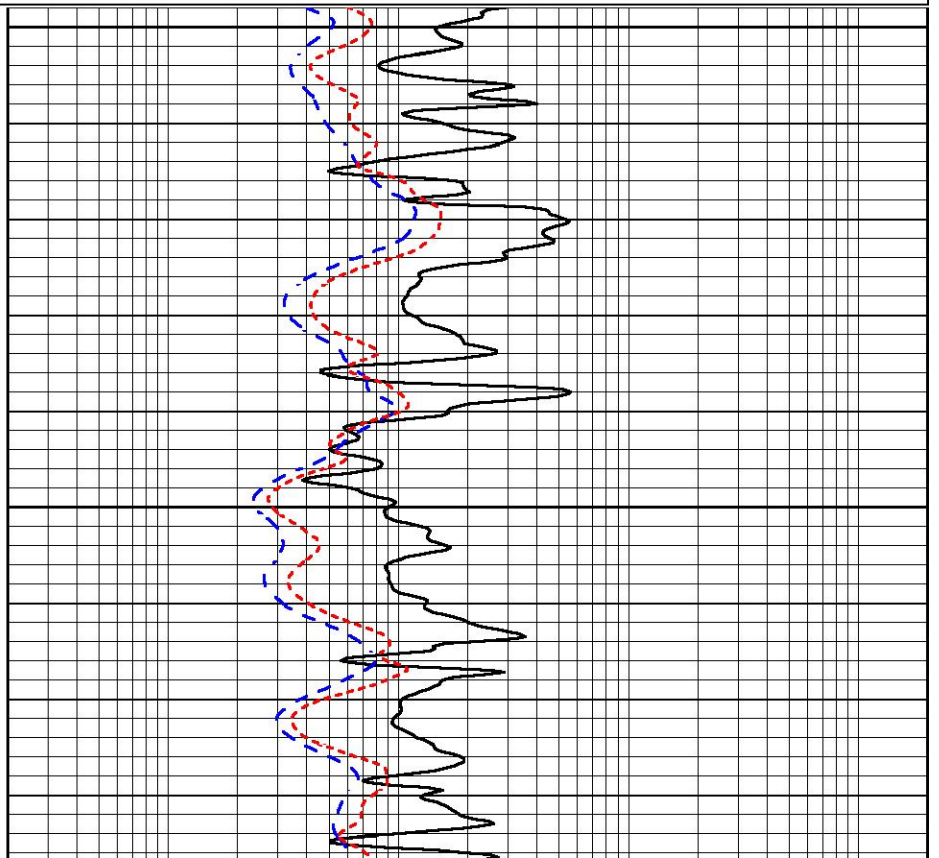
# MAIN SECTION

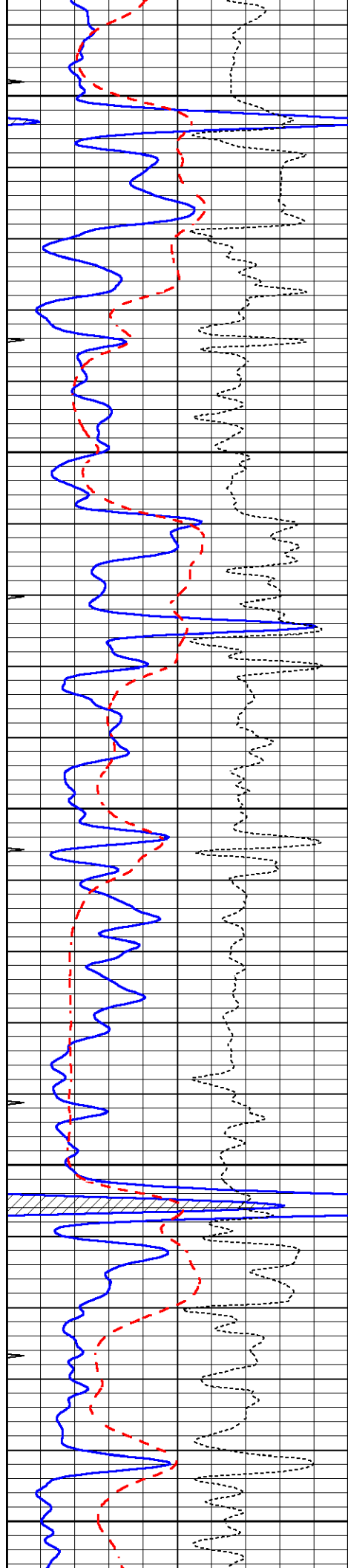
Database File 5899ddn.db  
 Dataset Pathname pass3.4  
 Presentation Format \_dil  
 Dataset Creation Fri May 06 16:56:39 2022  
 Charted by Depth in Feet scaled 1:240



3700

3750





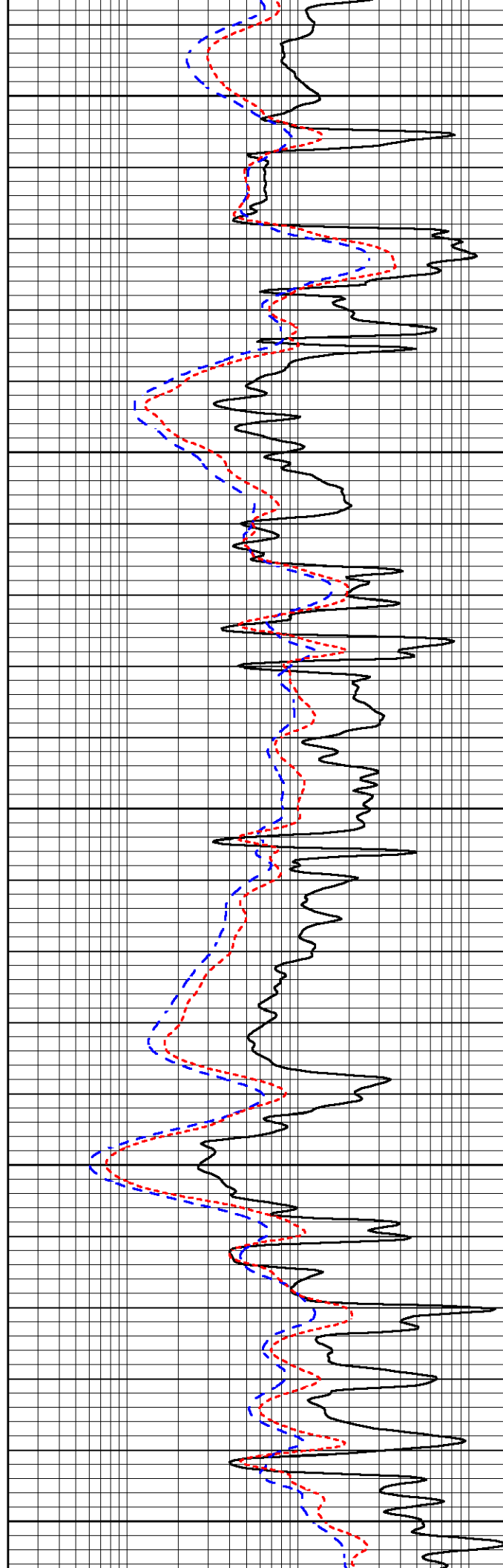
3800

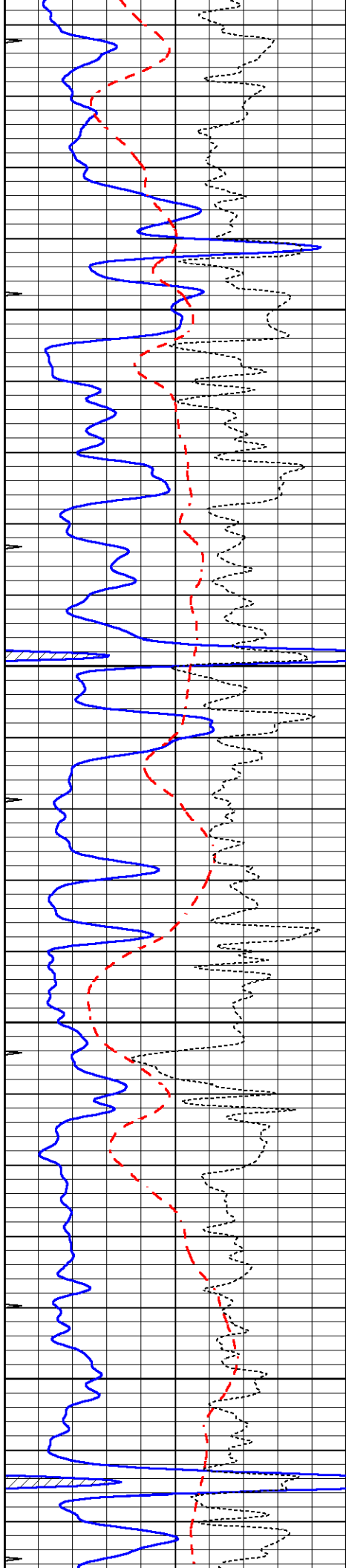
3850

3900

3950

4000



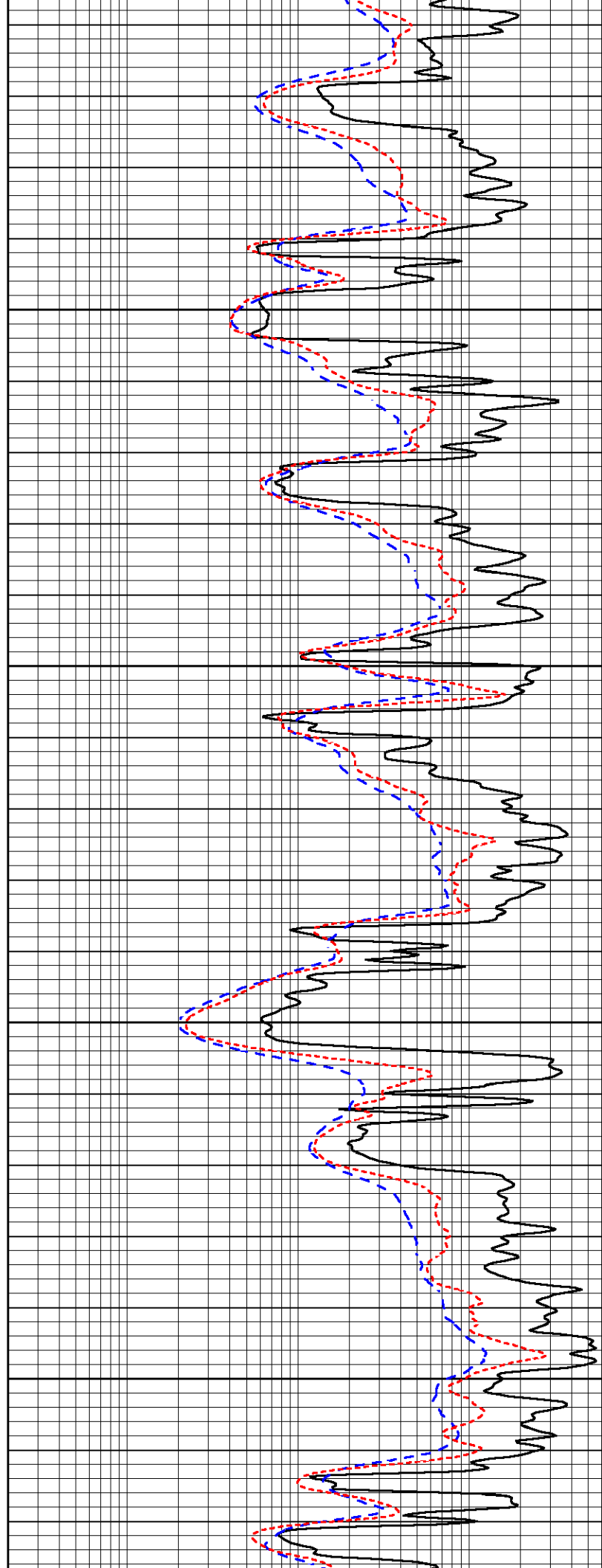


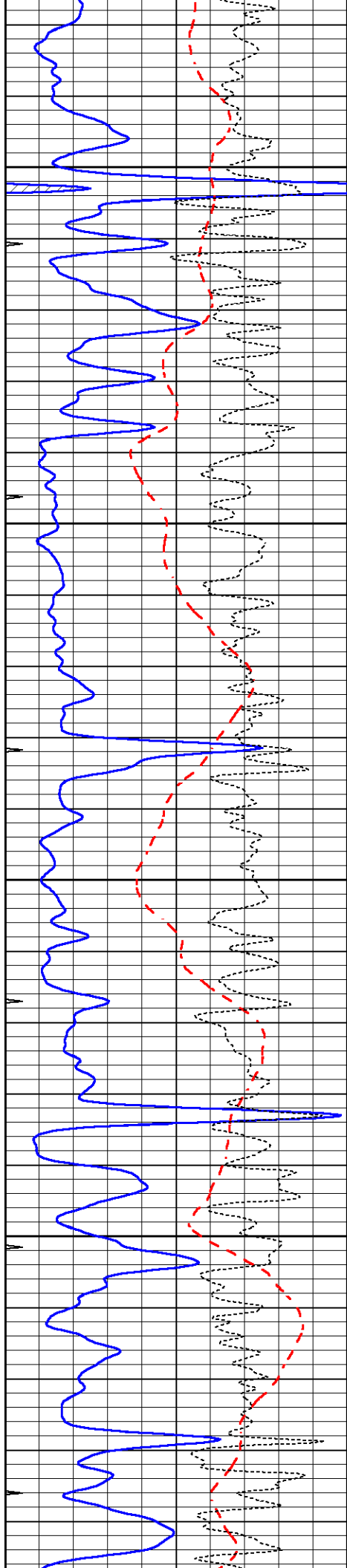
4050

4100

4150

4200



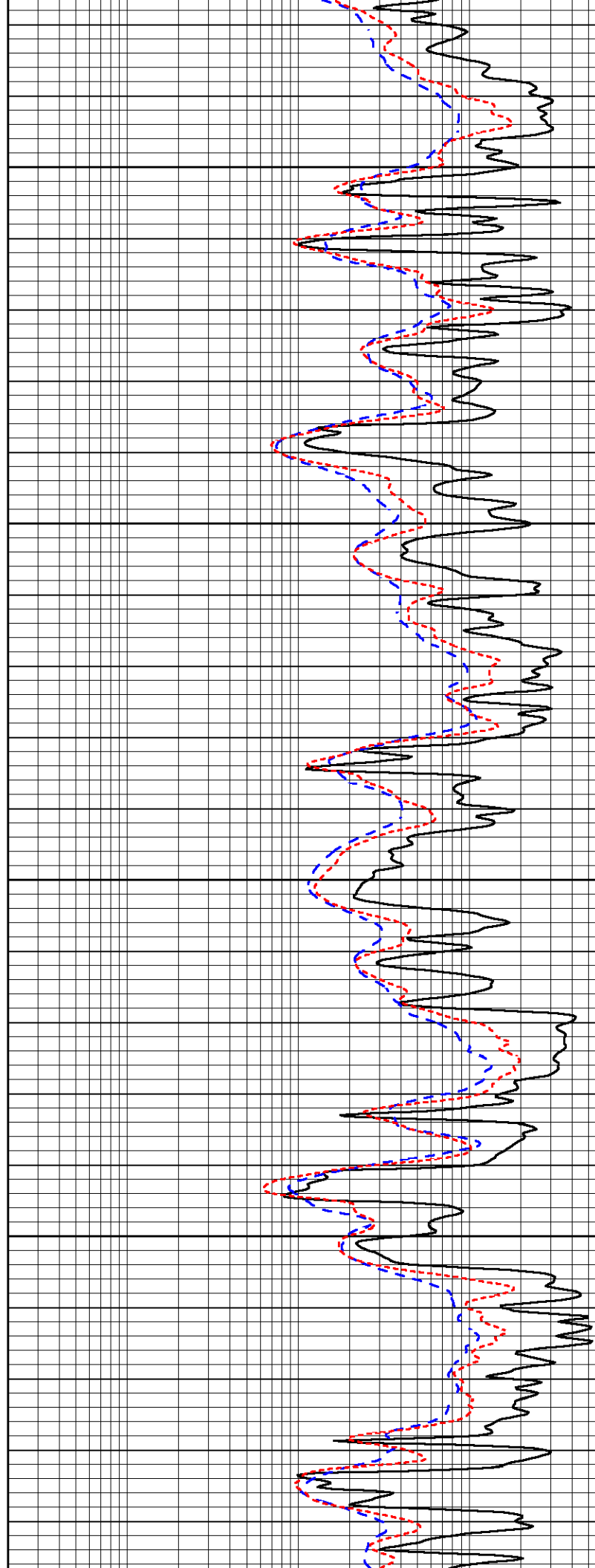


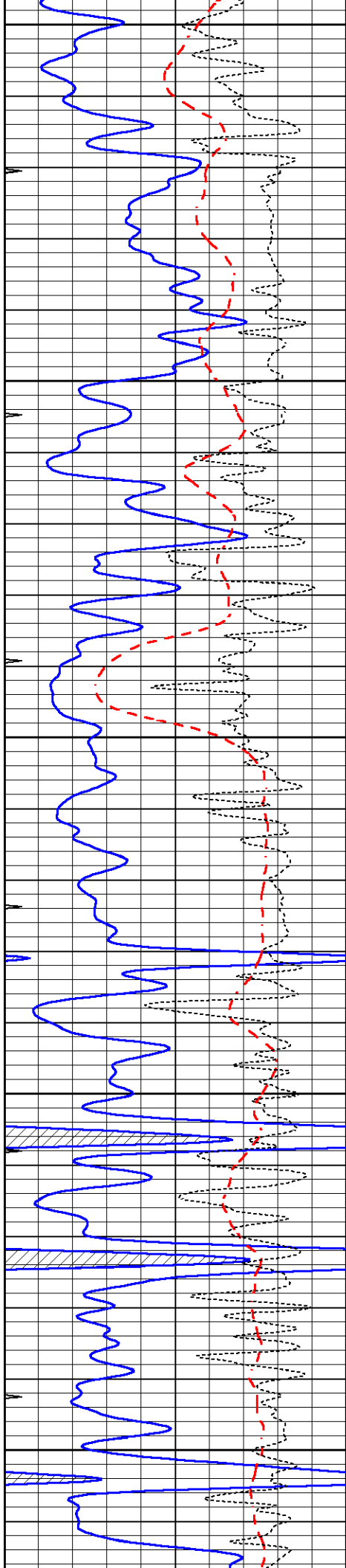
4250

4300

4350

4400





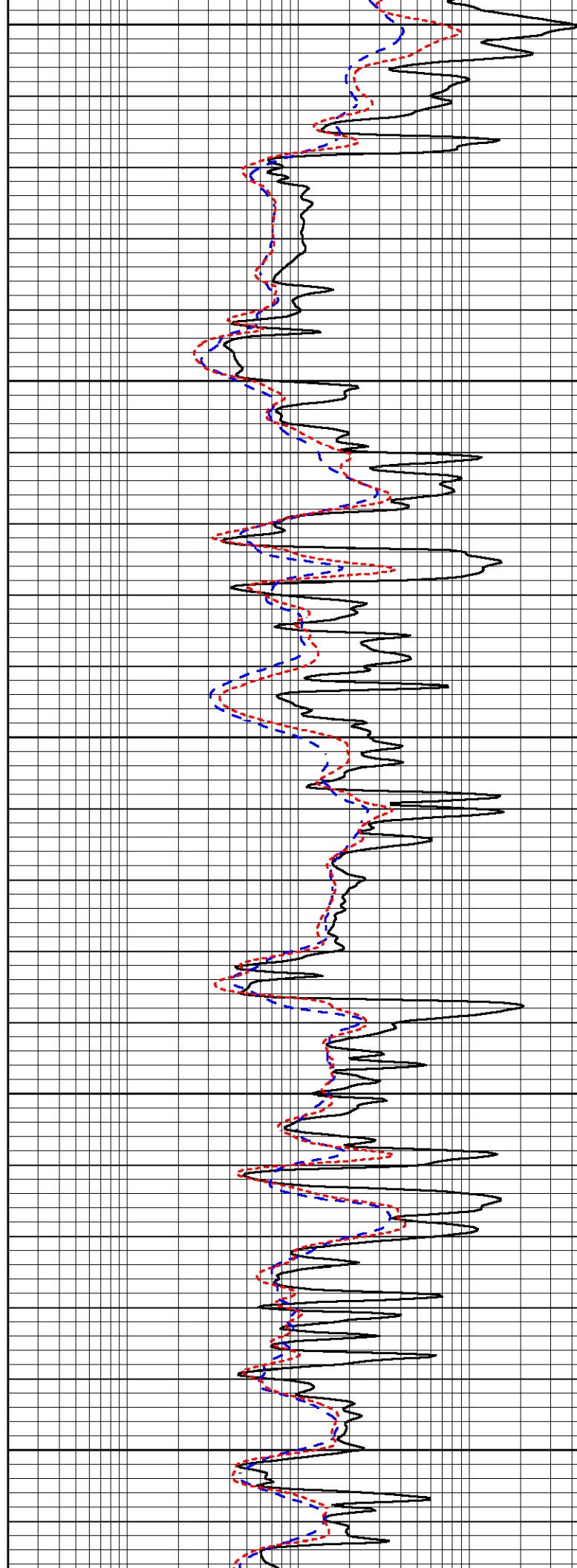
4450

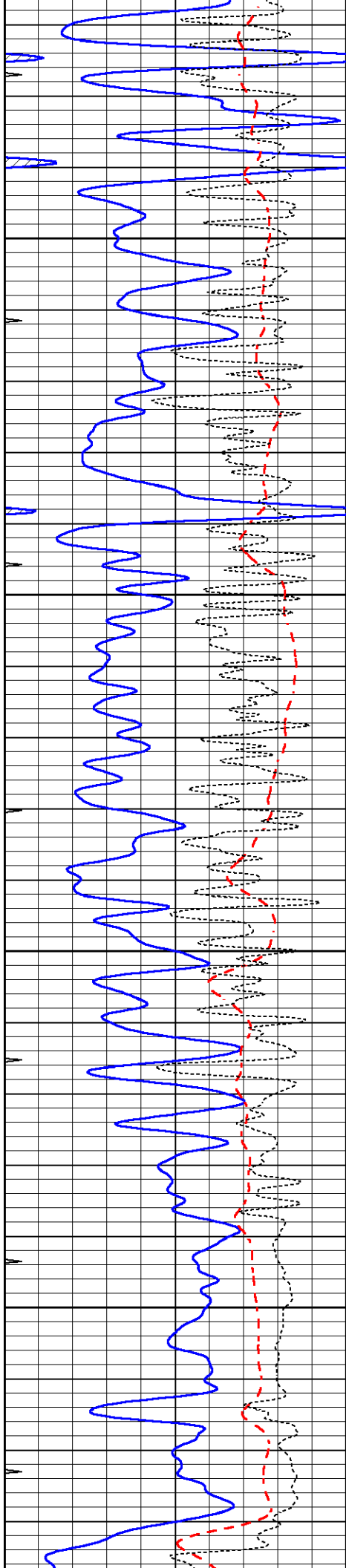
4500

4550

4600

4650



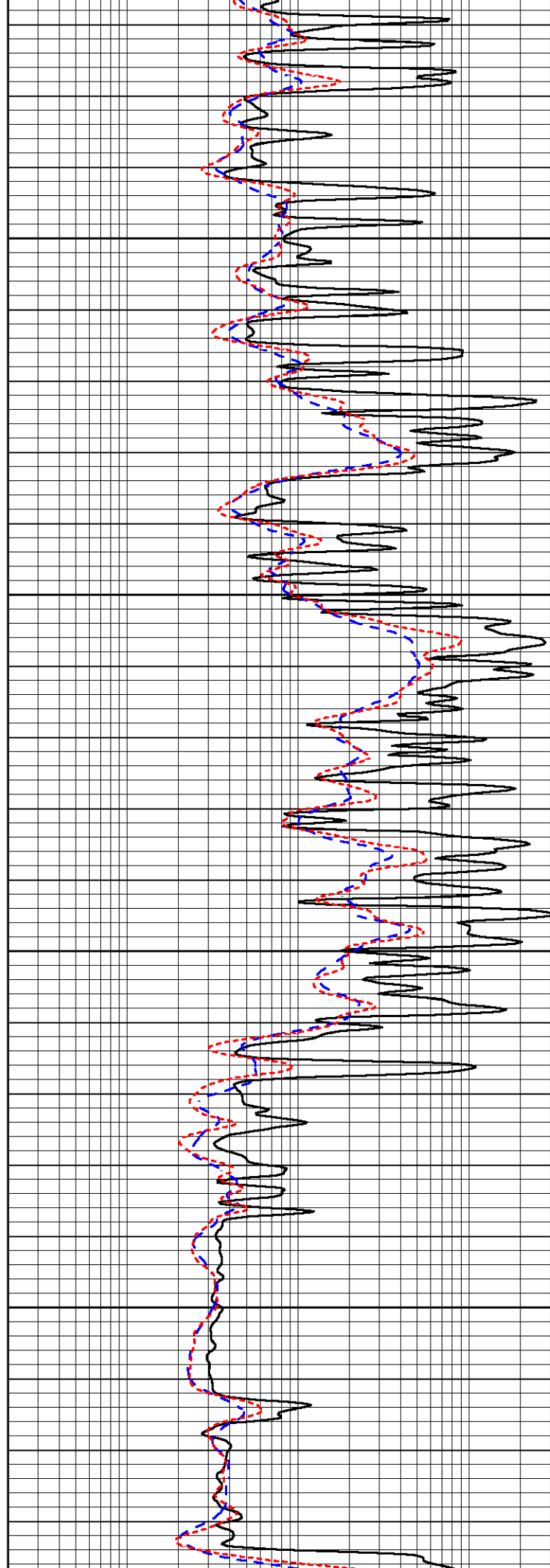


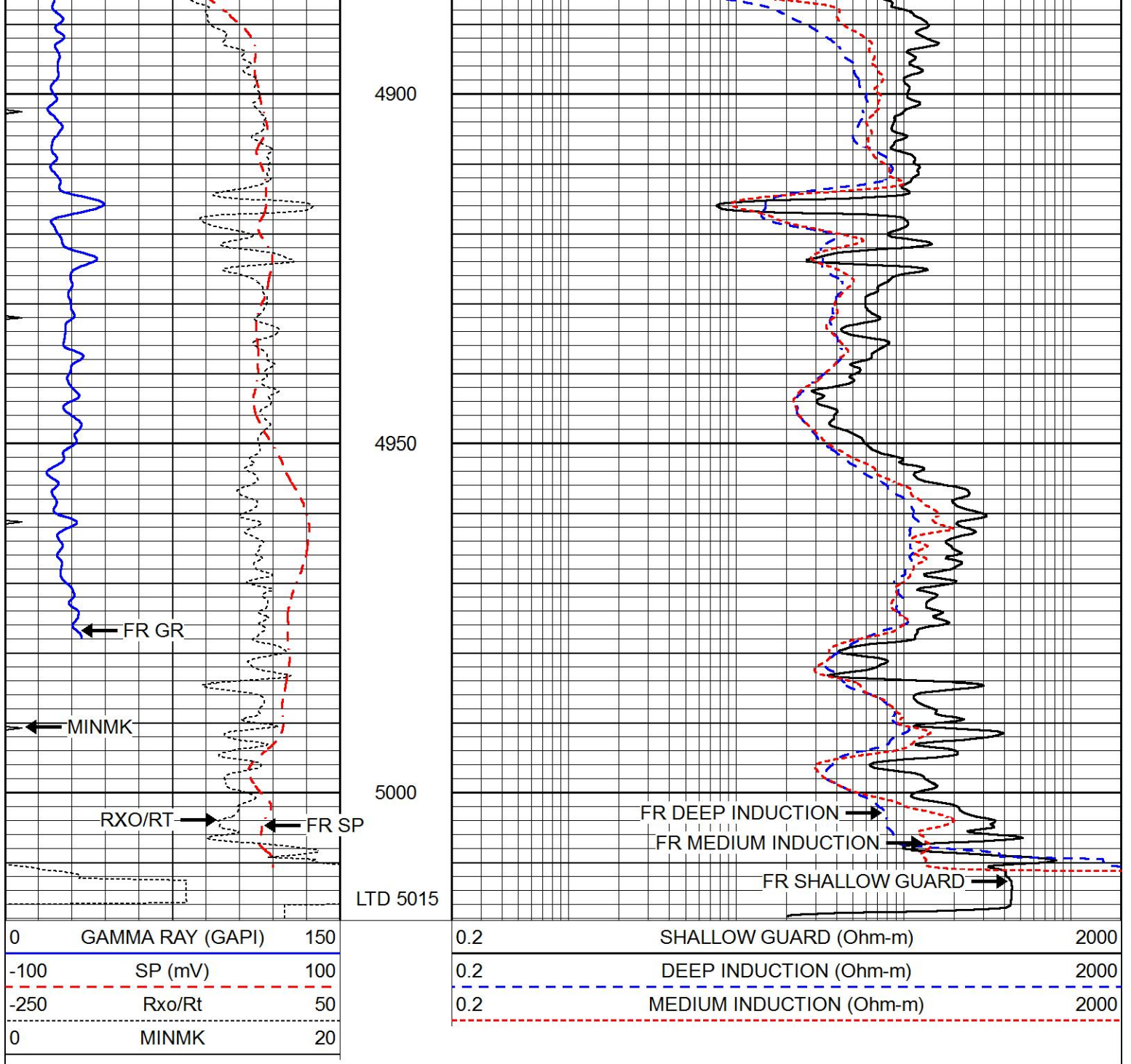
4700

4750

4800

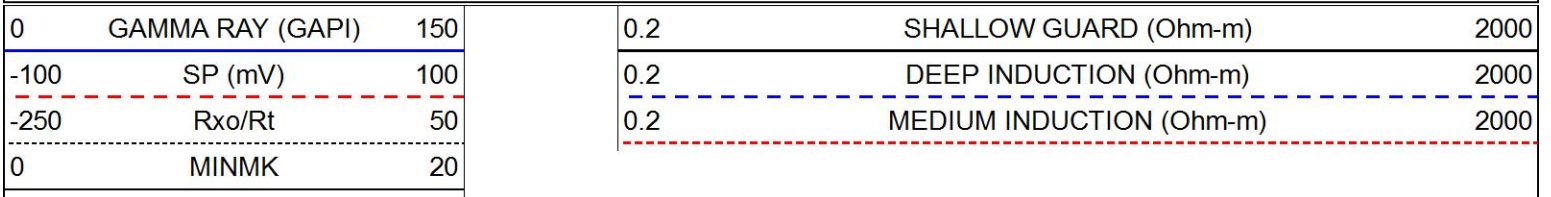
4850

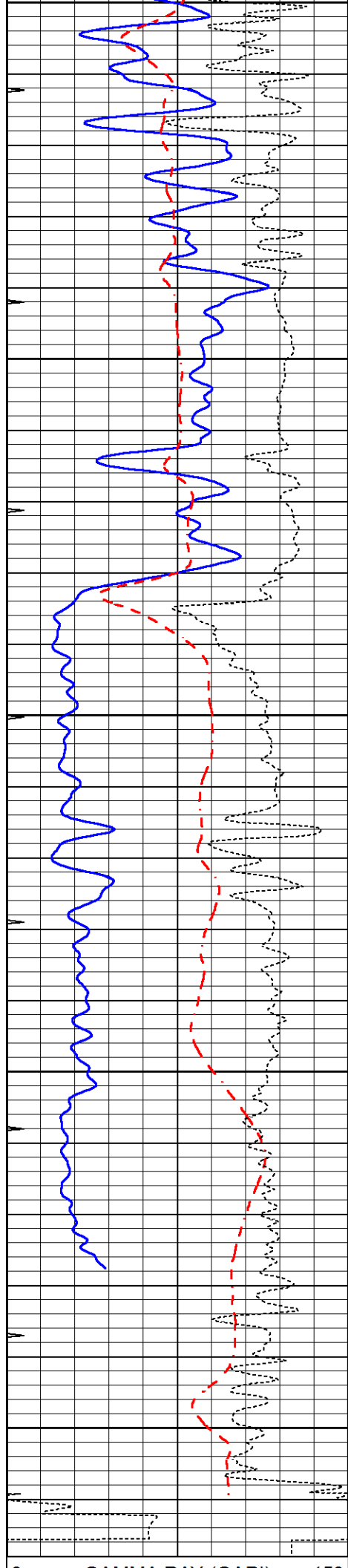




# REPEAT SECTION

Database File 5899ddn.db  
 Dataset Pathname pass2.4  
 Presentation Format \_dil  
 Dataset Creation Fri May 06 16:37:55 2022  
 Charted by Depth in Feet scaled 1:240





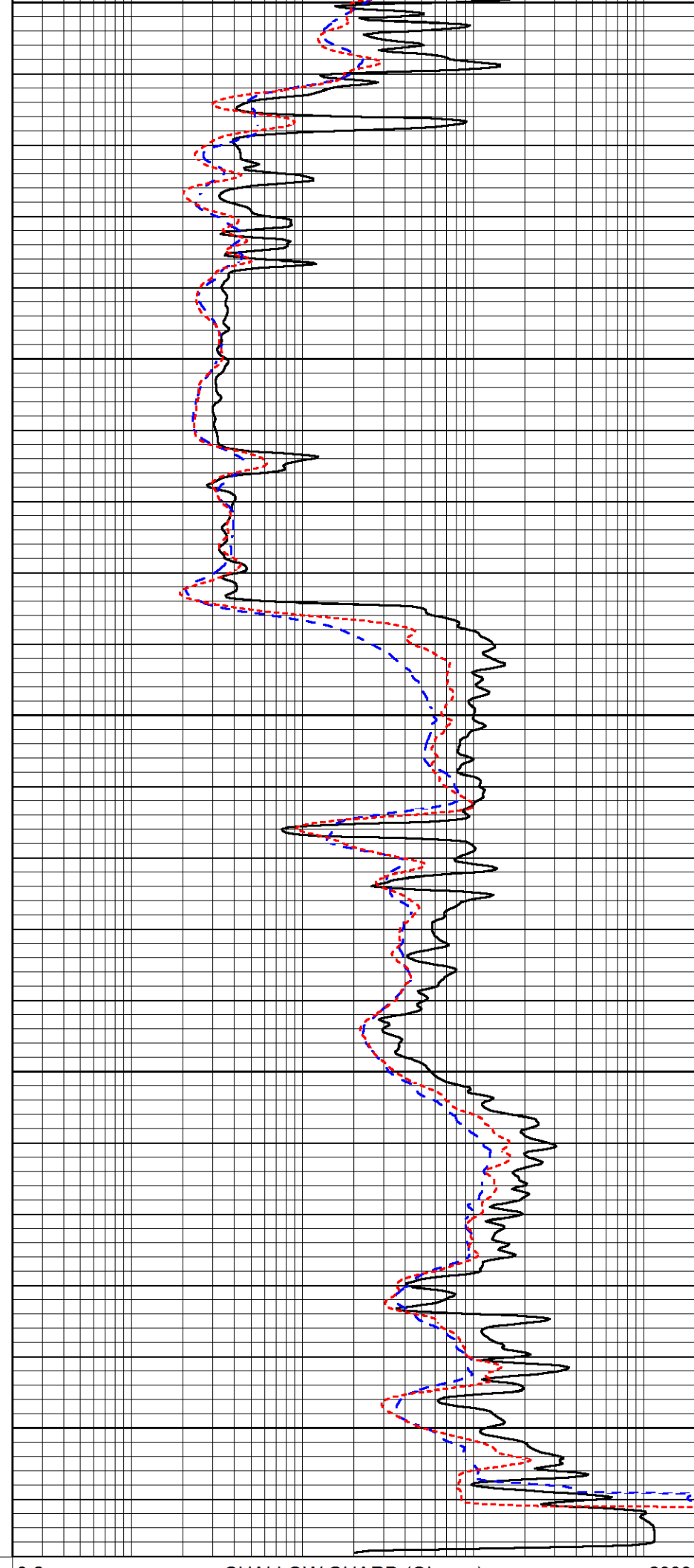
4800

4850

4900

4950

5000



4800

4850

4900

4950

5000

GAMMA RAY (GAPI)	150
-100 SP (mV)	100
-250 Rxo/Rt	50
0 MINMK	20

0.2	SHALLOW GUARD (Ohm-m)	2000
0.2	DEEP INDUCTION (Ohm-m)	2000
0.2	MEDIUM INDUCTION (Ohm-m)	2000

Calibration Report

Database File 5899ddn.db  
 Dataset Pathname pass3.4  
 Dataset Creation Fri May 06 16:56:39 2022

Dual Induction Calibration Report

Serial-Model: PROBE8-DILG  
 Surface Cal Performed: Fri May 06 15:03:38 2022  
 Downhole Cal Performed: Mon Sep 10 14:28:38 2018  
 After Survey Verification Performed: Mon Sep 10 14:28:40 2018

Surface Calibration

Loop:	Readings			References			Results	
	Air	Loop		Air	Loop		m	b
Deep	0.015	0.648	V	0.000	400.000	mmho/m	600.000	2.000
Medium	0.029	0.796	V	0.000	464.000	mmho/m	590.000	-10.000
Internal:	Zero	Cal		Zero	Cal		m	b
Deep	0.017	0.657	V	0.000	400.000	mmho/m	625.153	-10.619
Medium	0.016	0.757	V	0.000	464.000	mmho/m	625.992	-9.739

Downhole Calibration

	Readings			References			Results	
	Zero	Cal		Zero	Cal		m'	b'
Deep	0.000	0.000	mmho/m	2.011	405.777	mmho/m	1.000	0.000
Medium	0.000	0.000	mmho/m	7.590	503.393	mmho/m	1.000	0.000
LL3		7.500	V		1500.000	Ohm-m		
		0.000	V		20.000	Ohm-m		
		-7.200	V		3800.000	mmho-m		

After Survey Verification

	Readings			Targets			Results	
	Zero	Cal		Zero	Cal		m'	b'
Deep	0.000	0.000	mmho/m	0.000	0.000	mmho/m	0.000	0.000
Medium	0.000	0.000	mmho/m	0.000	0.000	mmho/m	0.000	0.000
LL3		1.000	Ohm-m		1.000	Ohm-m		
		0.000	Ohm-m		0.000	Ohm-m		
		1.000	mmho-m		1.000	mmho-m		

Litho Density Calibration Report  
 Serial: 002N Model: PRB

Master Calibration

Performed Tue Mar 10 15:08:00 2020

	Background	Magnesium	Aluminum	Aluminum+Fe	
Window 1	780.1	6981.9	2088.6	1871.2	cps
Window 2	718.6	5898.2	1813.8	1664.1	cps
Window 3	580.0	2989.5	1088.0	1039.1	cps
Window 4	172.8	175.7	175.3	173.5	cps
Long Space	0.0	5179.6	1095.2	945.5	cps
Short Space	1.1	1228.6	821.2	690.4	cps
Phi		1.7100	2.5000	0.0000	c/cp

Rho 1.7100  
 Pe 2.0000 2.7500 0.0000 5.7900 g/cc

Rib Angle : 45.5 Rib Slope : 1.016 Density/Spine Ratio : 0.548  
 Spine Angle : 75.5 Spine Slope : 3.857 Spine Intercept : -18.9

Before Survey Verification

Performed Wed Dec 31 18:00:00 1969

Window 1	0.0	0.0	0.0	0.0	cps
Window 2	0.0	0.0	0.0	0.0	cps
Window 3	0.0	0.0	0.0	0.0	cps
Window 4	0.0	0.0	0.0	0.0	cps
Long Space	0.0	0.0	0.0	0.0	cps
Short Space	0.0	0.0	0.0	0.0	cps
Measured Rho		0.0000	0.0000	0.0000	g/cc
Measured Correction		0.0000	0.0000	0.0000	g/cc
Measured Pe			0.0000	0.0000	

After Survey Verification

Performed Wed Dec 31 18:00:00 1969

Window 1	0.0	0.0	0.0	0.0	cps
Window 2	0.0	0.0	0.0	0.0	cps
Window 3	0.0	0.0	0.0	0.0	cps
Window 4	0.0	0.0	0.0	0.0	cps
Long Space	0.0	0.0	0.0	0.0	cps
Short Space	0.0	0.0	0.0	0.0	cps
Measured Rho		0.0000	0.0000	0.0000	g/cc
Measured Correction		0.0000	0.0000	0.0000	g/cc
Measured Pe			0.0000	0.0000	

Compensated Neutron Calibration Report

Serial Number: 61  
 Tool Model: G

CALIBRATION

Detector	Readings	Target	Normalization
Short Space	1.00 cps	1.00 cps	1.0000
Long Space	1.00 cps	1.00 cps	1.0000

PRE-SURVEY VERIFICATION

Detector	Readings	Measured	Target
1) Short Space	cps		
Long Space	cps	pu	pu
2) Short Space	cps		
Long Space	cps	pu	
3) Short Space	cps		
Long Space	cps	pu	

POST-SURVEY VERIFICATION

Detector	Readings	Measured	Target
1) Short Space	cps		
Long Space	cps	pu	pu

2)	Short Space	cps		
	Long Space	cps	pu	pu
3)	Short Space	cps		
	Long Space	cps	pu	pu

Gamma Ray Calibration Report

Serial Number:	GR6		
Tool Model:	OPEN		
Performed:	Thu May 05 16:17:57 2022		
Calibrator Value:	150.0	GAPI	
Background Reading:	0.0	cps	
Calibrator Reading:	276.0	cps	
Sensitivity:	0.7500	GAPI/cps	