



MIDWEST WIRELINE

DUAL INDUCTION LOG

Company **Iconic Oil & Gas LLC**
 Well **Tarman #2**
 Field **Byerly**
 County **Greeley** State **Kansas**

Company **Iconic Oil & Gas LLC**
 Well **Tarman #2**
 Field **Byerly**
 County **Greeley**
 State **Kansas**

Location: **API #: 15-071-20902-00-00**
1320 FSL & 1320 FEL
SEC 34 TWP 16S RGE 40W
 Permanent Datum **Ground Level** Elevation **3645**
 Log Measured From **Kelly Bushing**
 Drilling Measured From **Kelly Bushing**
 Other Services **CNL/CDL**
 Elevation **3645**
 K.B. **3656**
 D.F. **3645**
 G.L.

Date	8/15/2022
Run Number	One
Depth Driller	3095
Depth Logger	3095
Bottom Logged Interval	3094
Top Log Interval	300
Casing Driller	8.625 @ 311
Casing Logger	307
Bit Size	7.875
Type Fluid in Hole	Chemical
Salinity, ppm CL	8000
Density / Viscosity	8.9 48
pH / Fluid Loss	9.5 9.6
Source of Sample	Flowline
Rm @ Meas. Temp	0.6 @ 76
Rmt @ Meas. Temp	0.45 @ 76
Rmc @ Meas. Temp	0.81 @ 76
Source of Rmf / Rmc	Charts
Rm @ BHT	0.43 @ 107
Operating Rig Time	2.5 Hours
Max Rec. Temp. F	107
Equipment Number	P-24
Location	Hays
Recorded By	T. Martin
Witnessed By	Ray Velasquez

<<< Fold Here >>>

All interpretations are opinions based on inferences from electrical or other measurements and Midwest Wireline LLC cannot and does not guarantee the accuracy or correctness of any interpretation, and Midwest Wireline LLC will not be liable or responsible for any loss, costs, damages, or expenses incurred or sustained by anyone resulting from any interpretation made by any of our officers, agents or employees.

Comments

N/A DENOTES NOT AVAILABLE OR NON-APPLICABLE.

Tribune, KS, ~11 N to F Rd,
 2 E, S past pens and W

Log Measured From: **Kelly Bushing** 11 Ft. Above Permanent Datum

THANK YOU FOR USING MIDWEST WIRELINE LLC
 785-625-3858

Your Midwest Wireline Crew		This Log Record Was Witnessed By	
Engineer: T. Martin	Operator:	Primary Witness: Ray Velasquez	Secondary Witness:
Operator:	Operator:	Secondary Witness:	Secondary Witness:
Operator:		Secondary Witness:	

Core	Offset (ft)	Depth	Description	Length (ft)	O.D. (in)	Weight (lb)
------	-------------	-------	-------------	-------------	-----------	-------------

Sensor	Offset (ft)	Schematic	Description	Length (ft)	O.D. (in)	Weight (lb)
GR	32.75		GR-M&W (106)	3.00	3.50	50.00
CNLSC CNSSC	29.65 28.90		CNT-M&W (207-MW)	5.00	3.50	100.00
LSD DCAL SSD	20.60 20.58 20.10		CDL-M&W (302-02)	8.50	4.00	250.00
RLL3F RLL3	15.50 15.50		DIL-M&W (502 HT)	18.25	3.50	220.00
CILD	8.33					
CILM	4.50					
SP	0.20					

Dataset: iconic_tarman #2.db: field/well/Stack/pass3.1
 Total length: 34.75 ft
 Total weight: 620.00 lb
 O.D.: 4.00 in

Log Variables

DatabaseC:\ProgramData\Warrior\Data\iconic_tarman #2.db
 Dataset field/well/Stack/pass3.111/_vars_

Top - Bottom

A	BOREID in	BOTTEMP degF	CASEOD in	CASETHCK in	FLUIDDEN g/cc	M	MATRXDEN g/cc
1	7.875	107	4.5	0	1	2	2.71
NPORSEL	PERFS	SNDERR mmho/m	SNDERRM mmho/m	SPSHIFT mV	SRFTEMP degF	SZCOR	TDEPTH ft
Limestone	0	0	0	30	100	Off	3095

Variable Description

A : Cement Factor (a)
 BOREID : Borehole I.D.
 BOTTEMP : Bottom Hole Temperature
 CASEOD : Casing O.D.
 CASETHCK : Casing Thickness
 FLUIDDEN : Fluid Density
 M : Cement Exp (m)
 MATRXDEN : Matrix Density

NPORSEL : Neutron Porosity Curve Select
 PERFS : Perforation Flag
 SNDERR : Deep Sonde Error Correction
 SNDERRM : Medium Sonde Error Correction
 SPSHIFT : S.P. Baseline Offset
 SRFTEMP : Surface Temperature
 SZCOR : CN Size Cor. ?
 TDEPTH : Total Depth

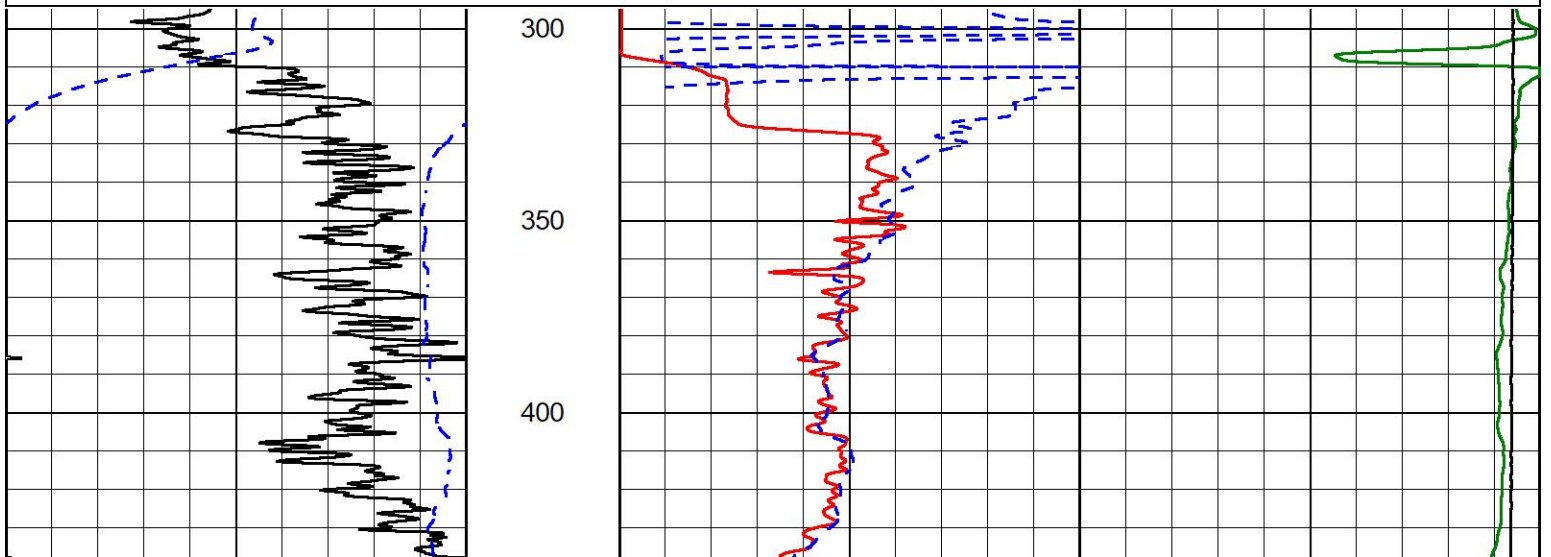


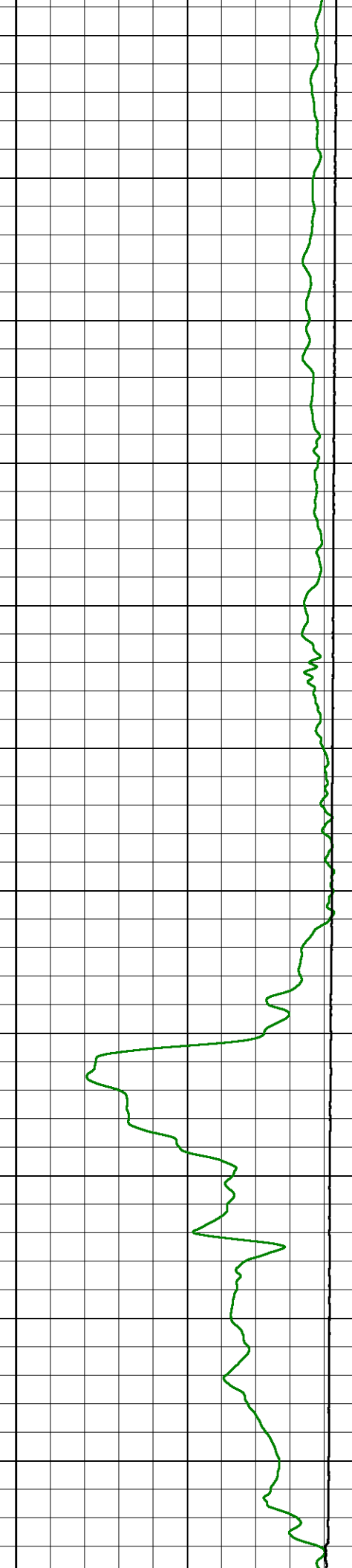
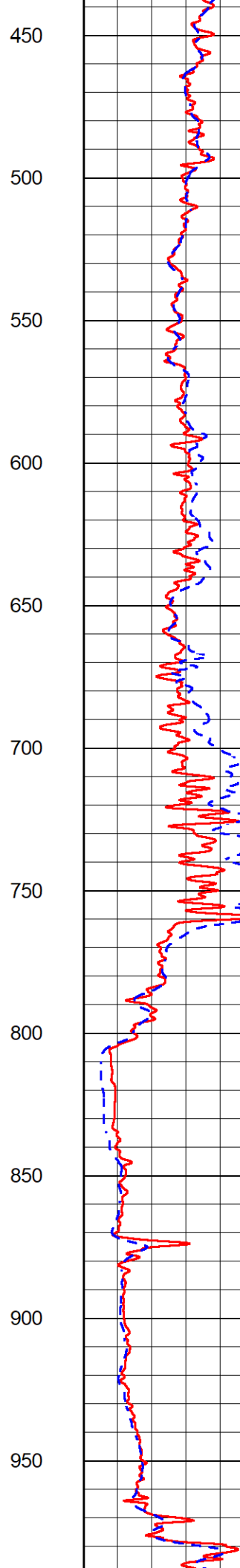
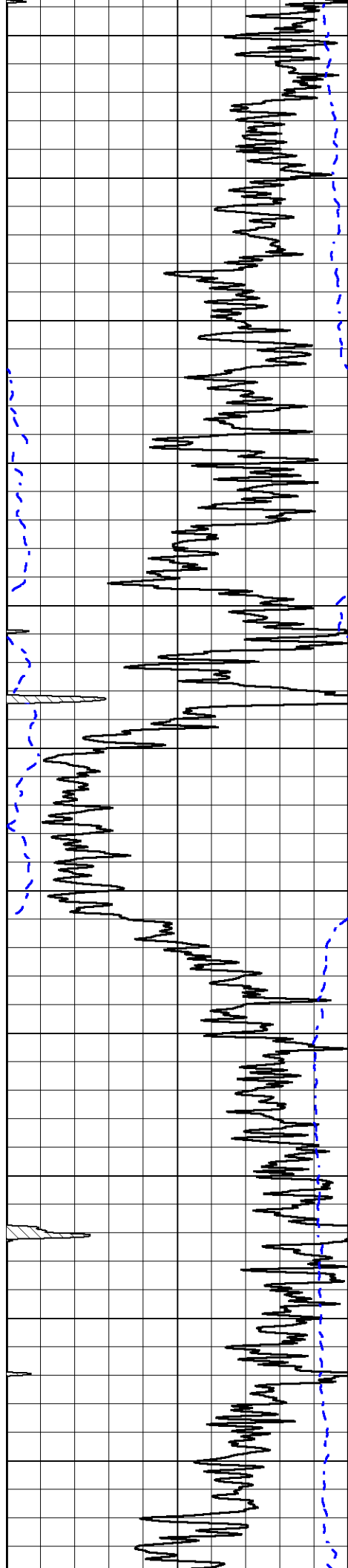
2" SCALE RESISTIVITY

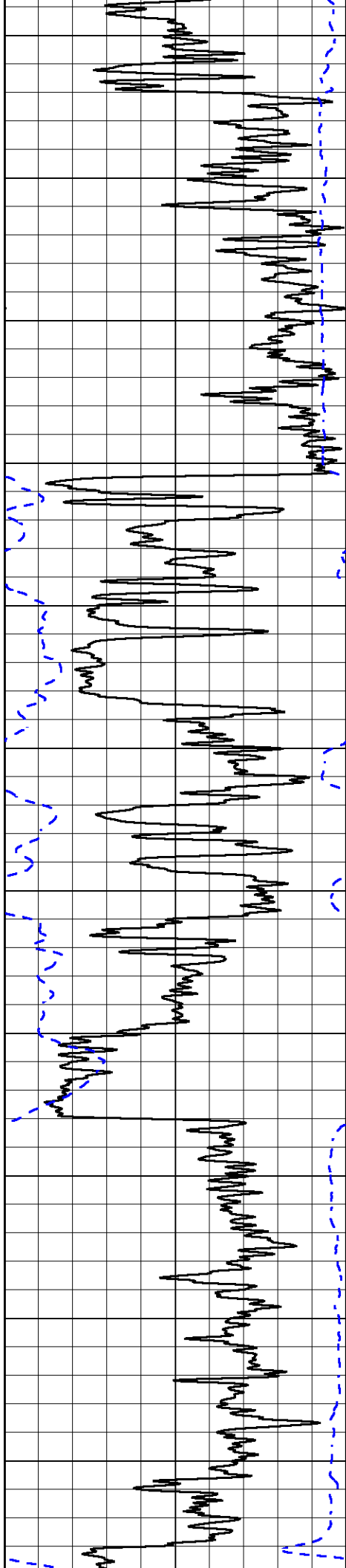
MAIN PASS

Database File iconic_tarman #2.db
 Dataset Pathname Stack/pass3.2
 Presentation Format _dil2in
 Dataset Creation Mon Aug 15 19:57:03 2022
 Charted by Depth in Feet scaled 1:600

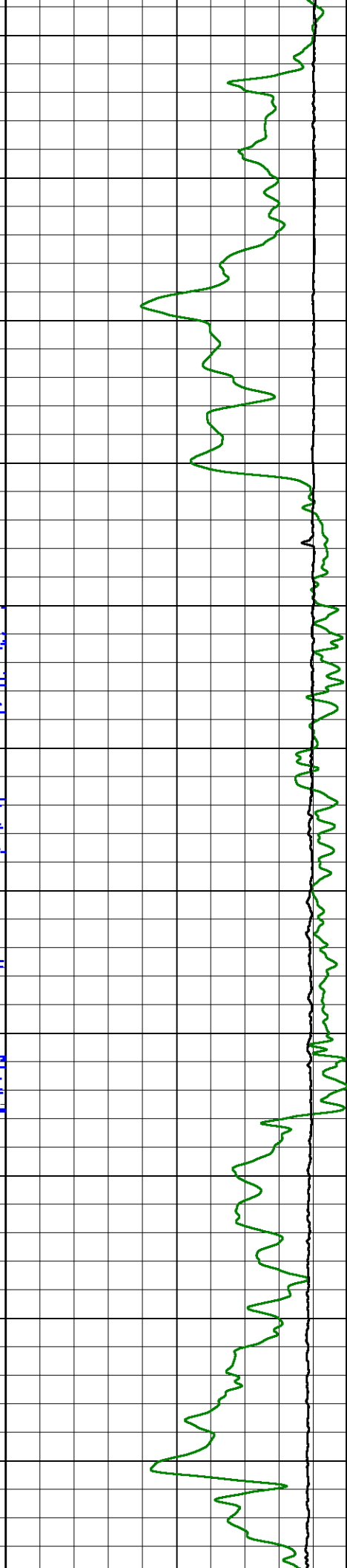
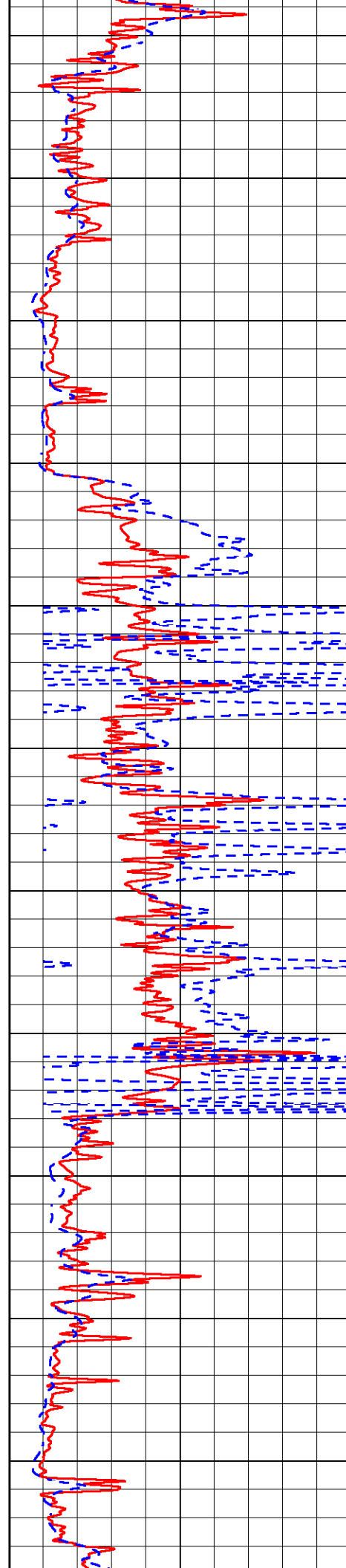
0	Gamma Ray (GAPI)	150	1000	Conductivity (mmho/m)	0
-200	SP (mV)	0	15000	Line Tension (lb)	0
		0	Shallow Resistivity (Ohm-m)	50	
		0	Deep Resistivity (Ohm-m)	50	
		Shallow Resistivity			
		50	(Ohm-m)	200	
		50	Deep Resistivity (Ohm-m)	200	

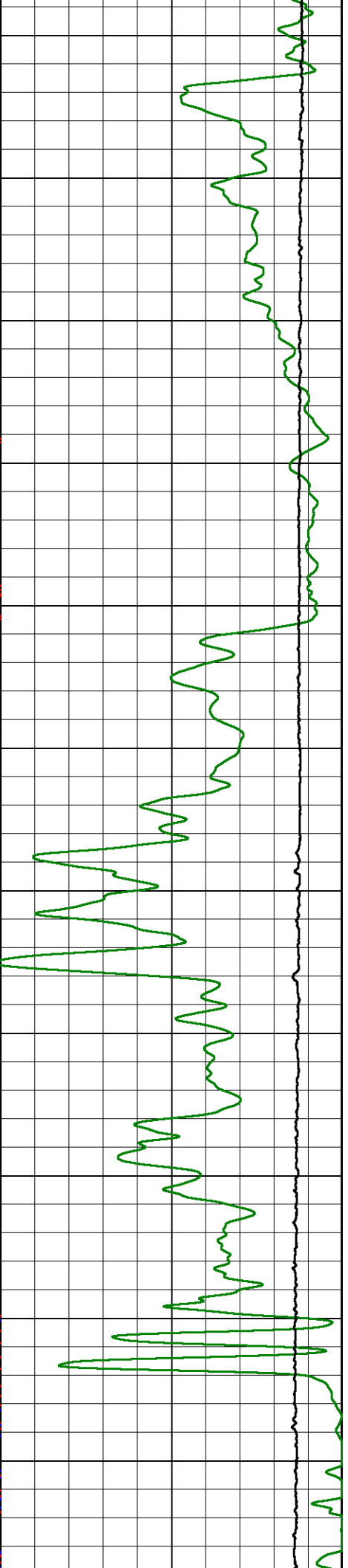
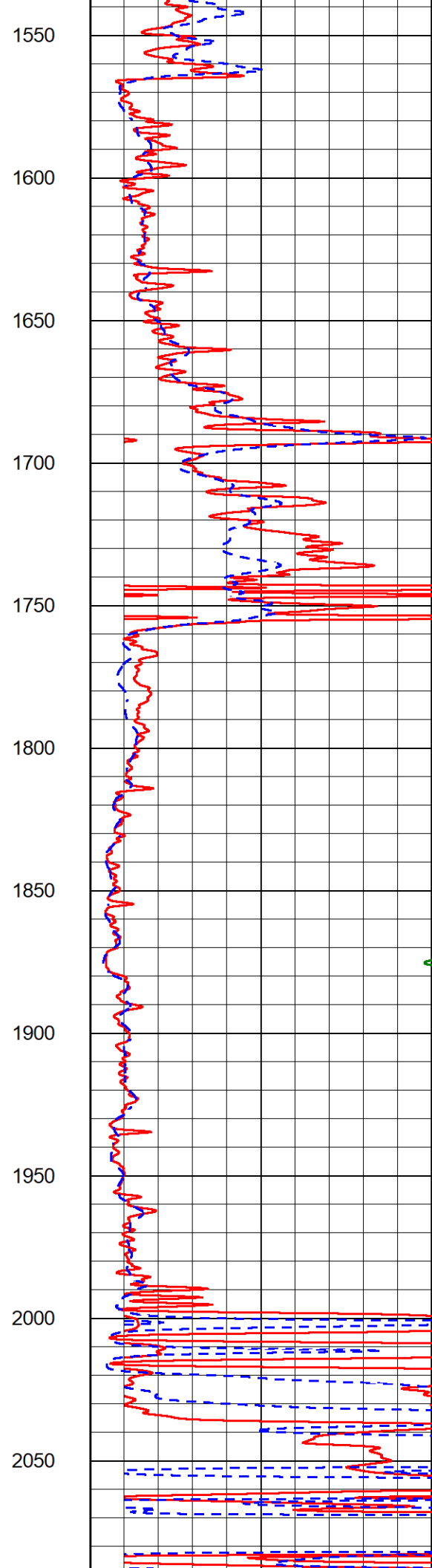
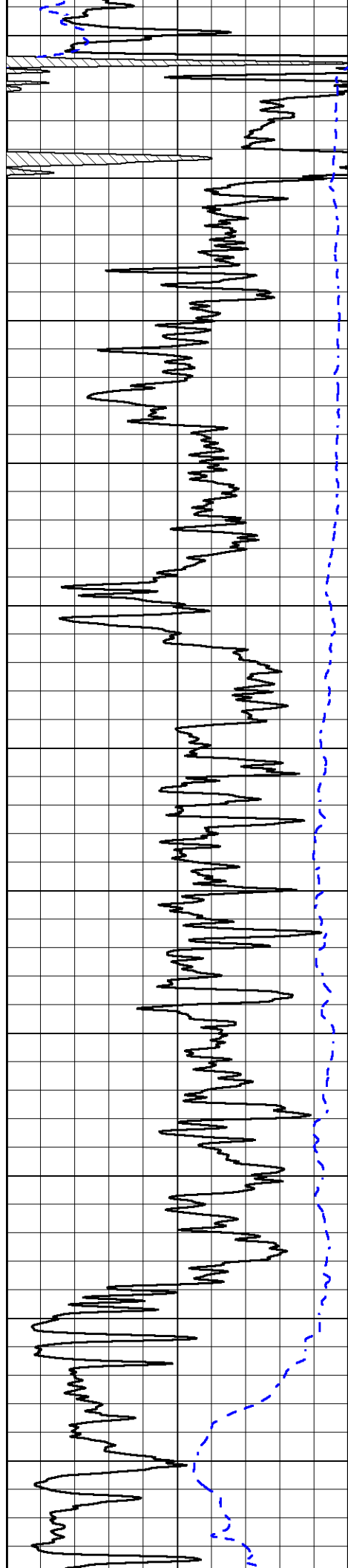


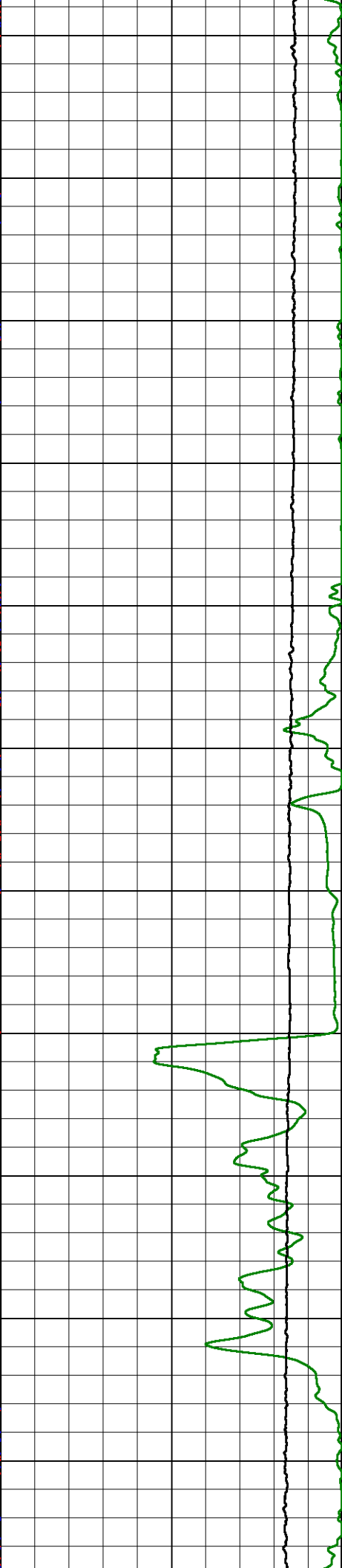
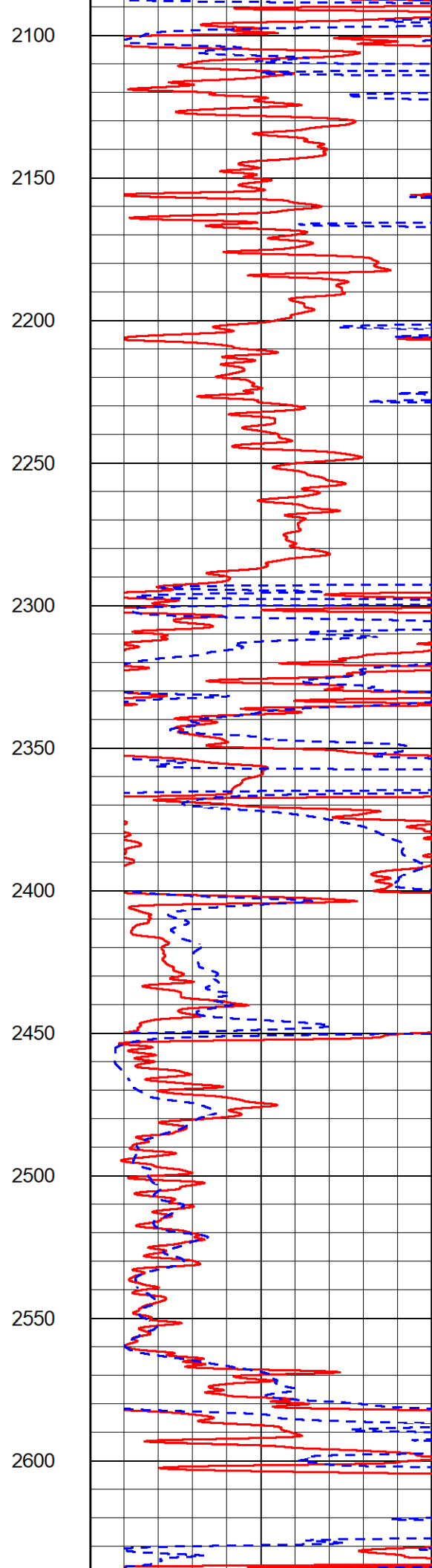
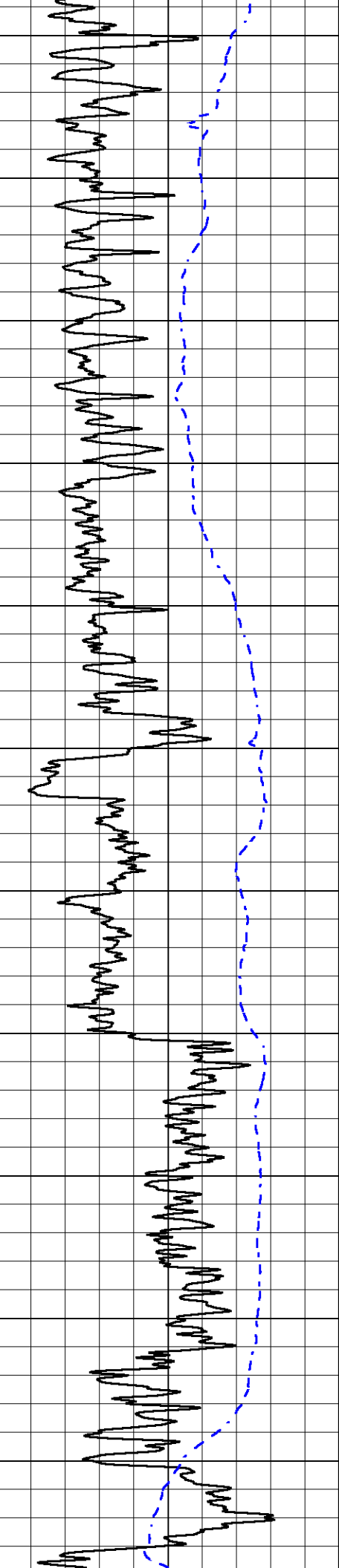


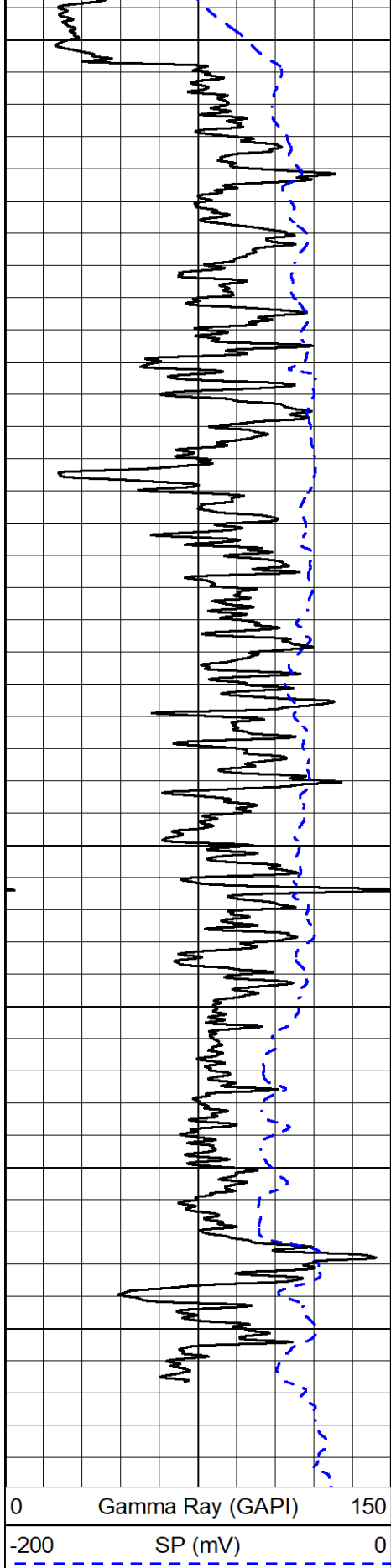


1000
1050
1100
1150
1200
1250
1300
1350
1400
1450
1500

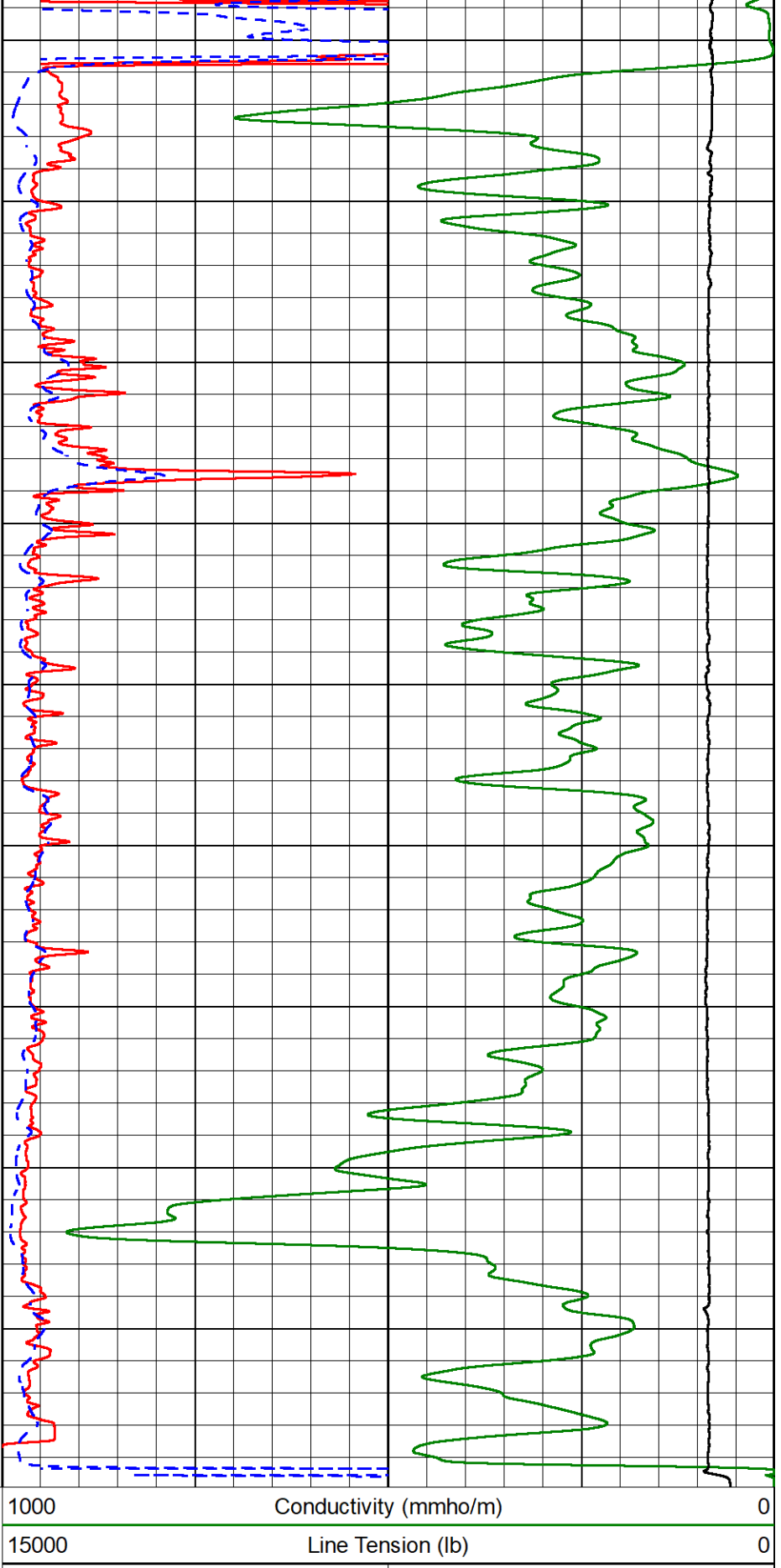








2650
2700
2750
2800
2850
2900
2950
3000
3050
3100



0	Shallow Resistivity (Ohm-m)	50
0	Deep Resistivity (Ohm-m)	50
Shallow Resistivity		
50	(Ohm-m)	200
50	Deep Resistivity (Ohm-m)	200



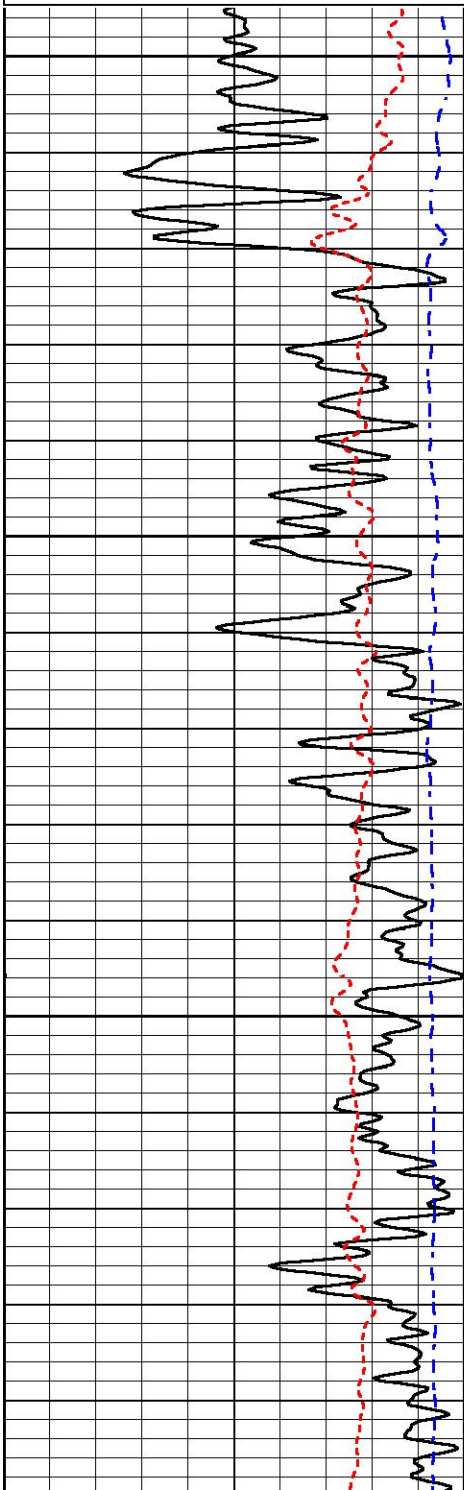
DETAIL SECTION

MAIN PASS

Database File iconic_tarman #2.db
 Dataset Pathname Stack/pass3.1
 Presentation Format _dil
 Dataset Creation Mon Aug 15 19:57:11 2022
 Charted by Depth in Feet scaled 1:240

0	Gamma Ray (GAPI)	150
-160	RXORT	40
-200	SP (mV)	0

0.2	Deep Resistivity (Ohm-m)	2000
0.2	Medium Resistivity (Ohm-m)	2000
0.2	RLL3 (Ohm-m)	2000
10000	Line Tension (lb)	0

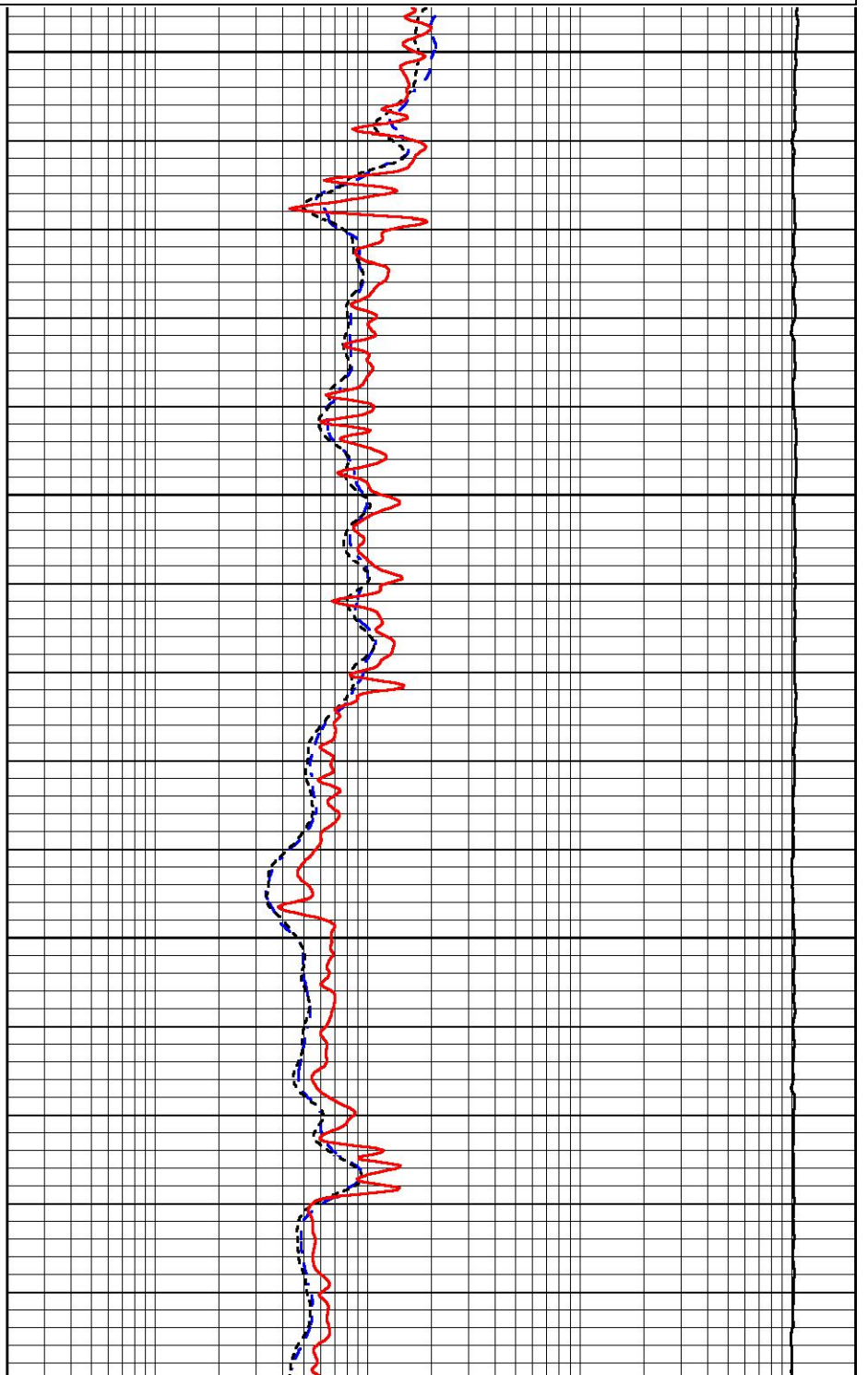


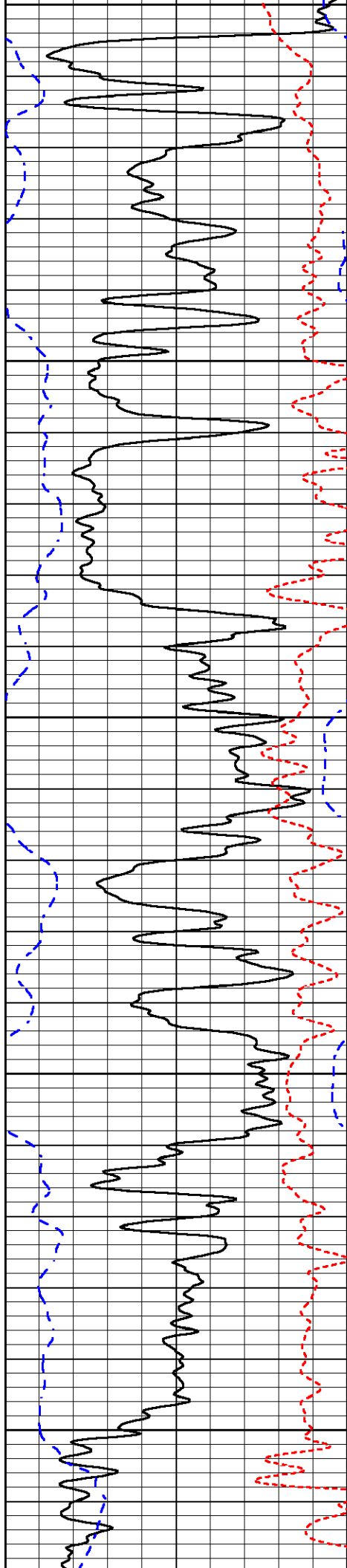
1000

1050

1100

1150





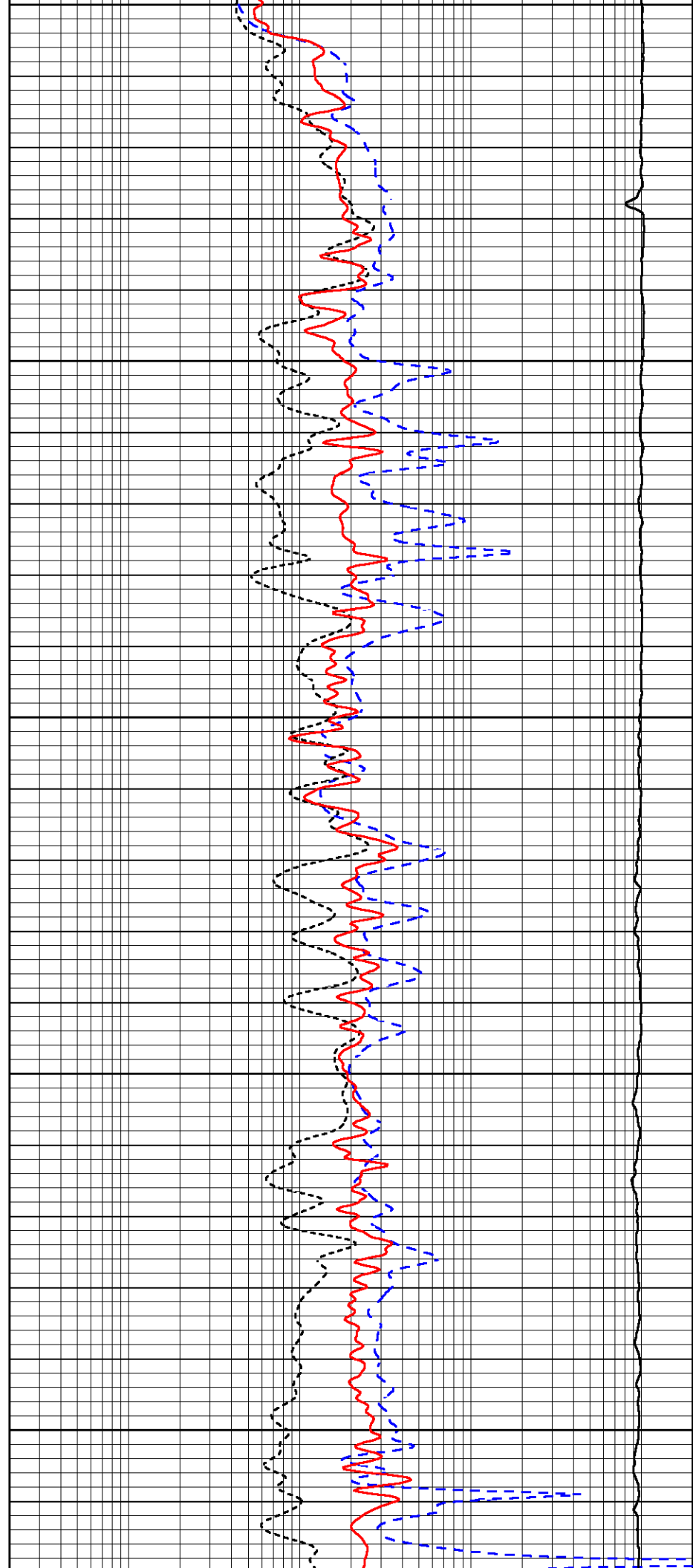
1150

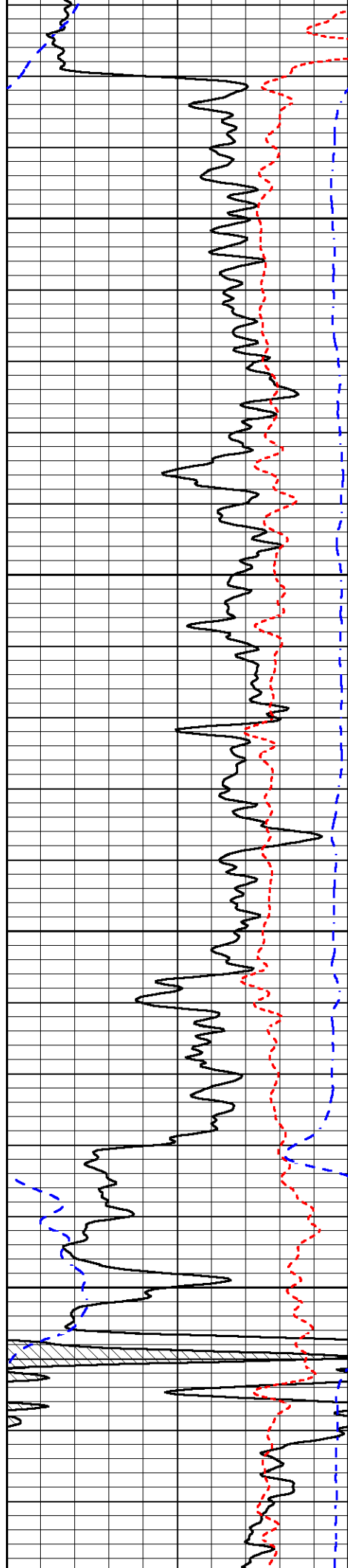
1200

1250

1300

1350



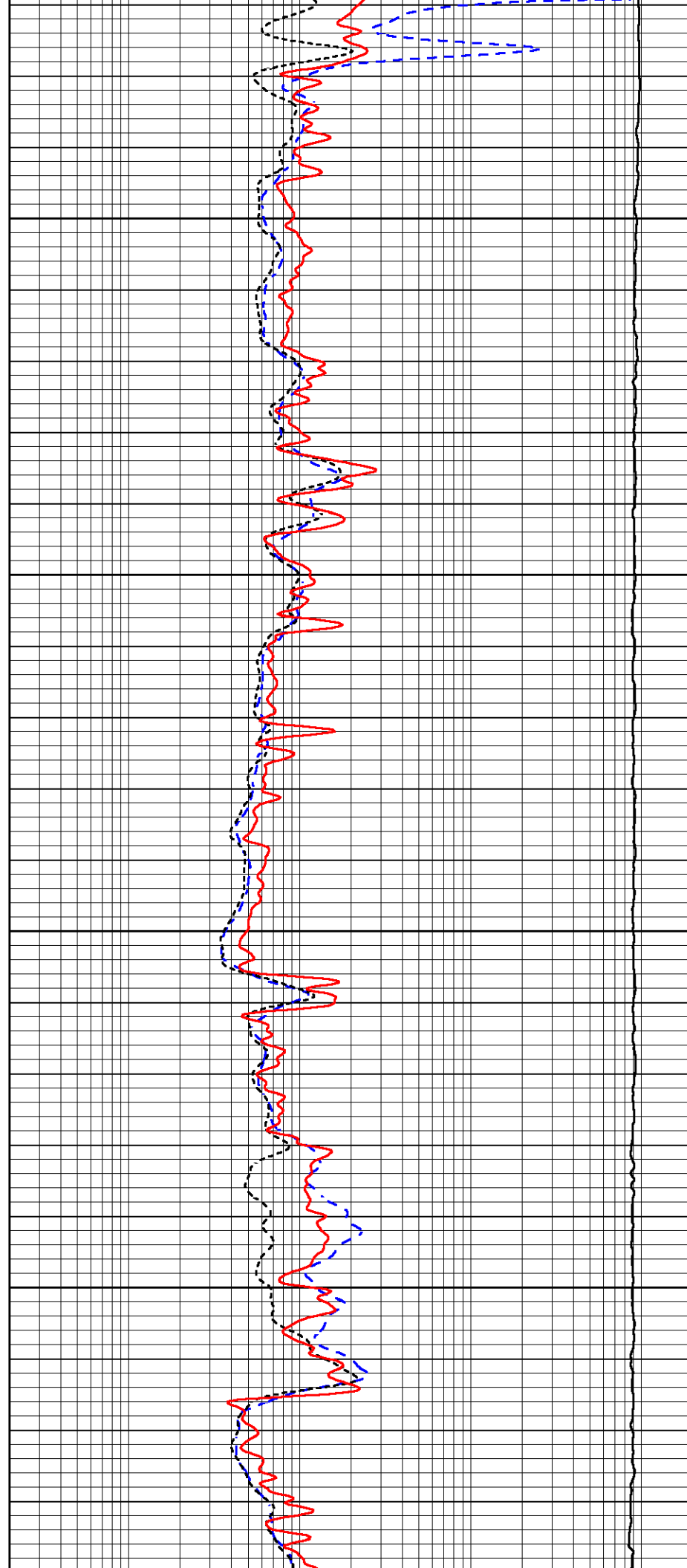


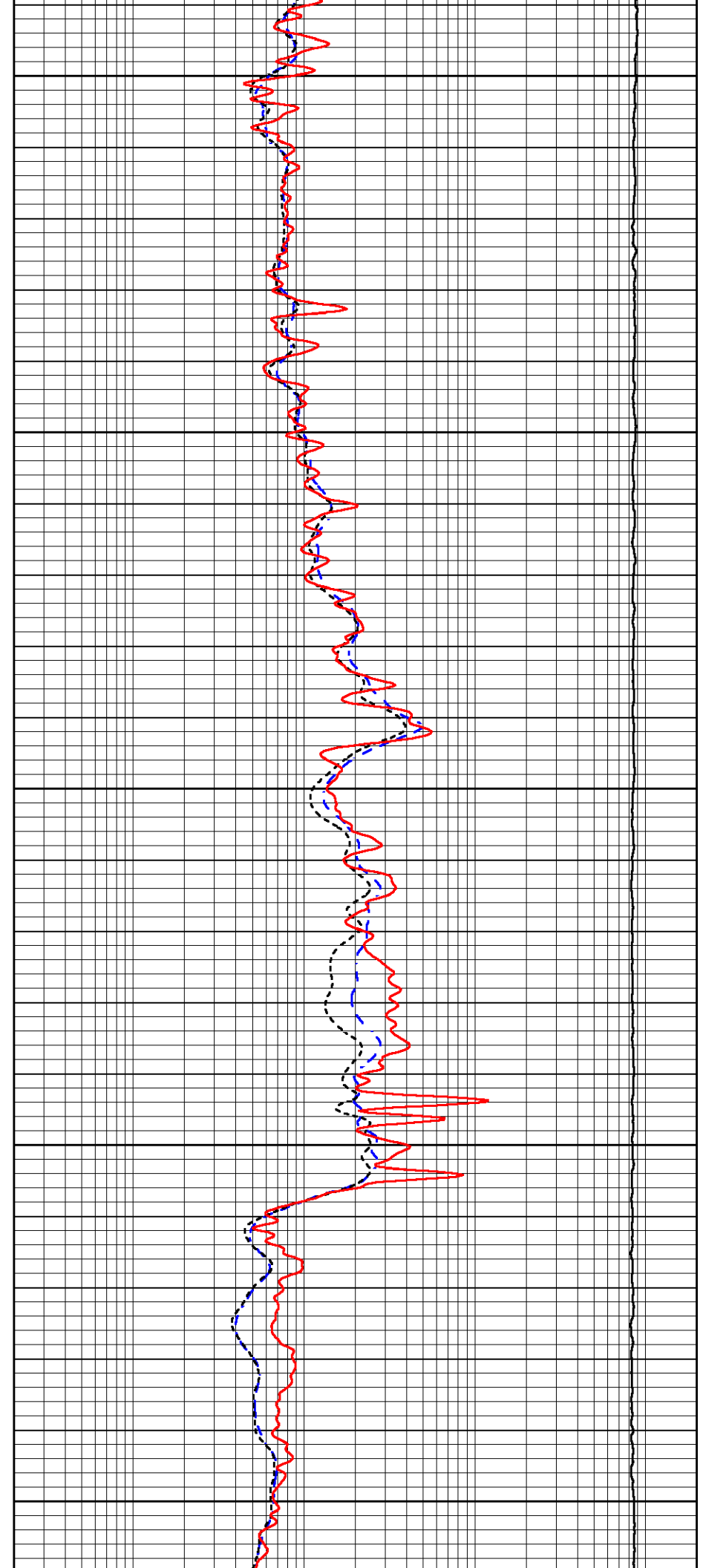
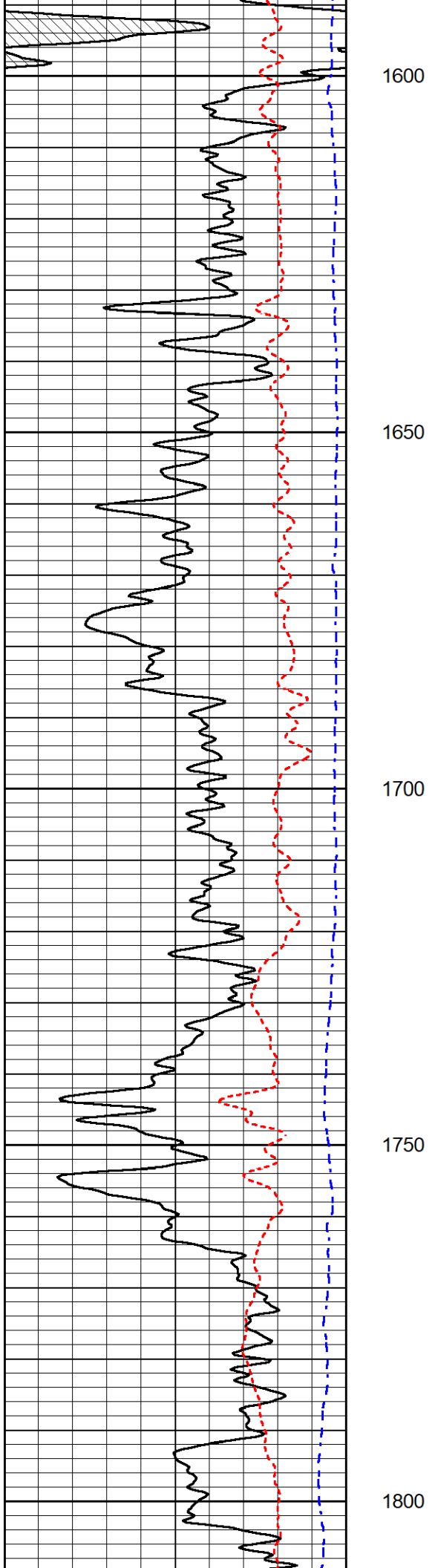
1400

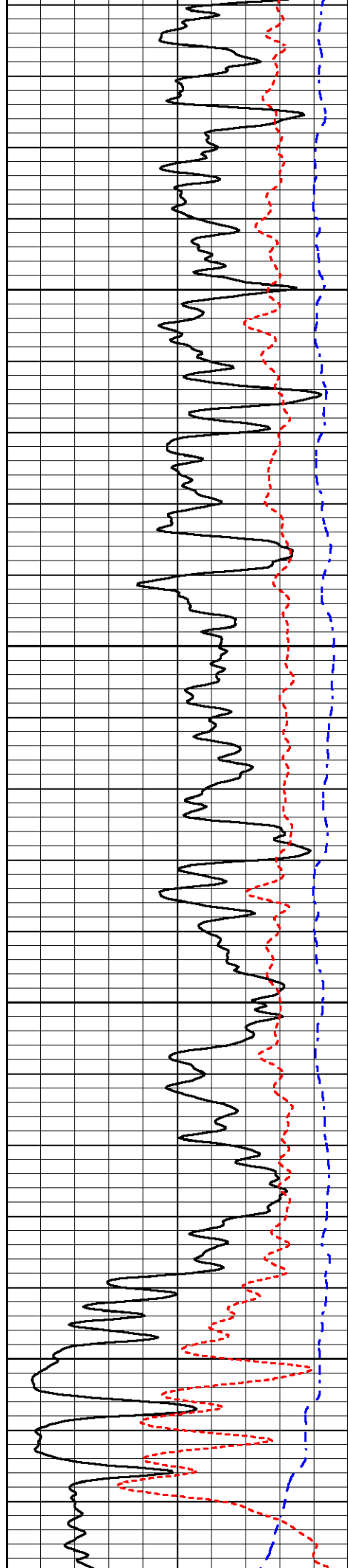
1450

1500

1550





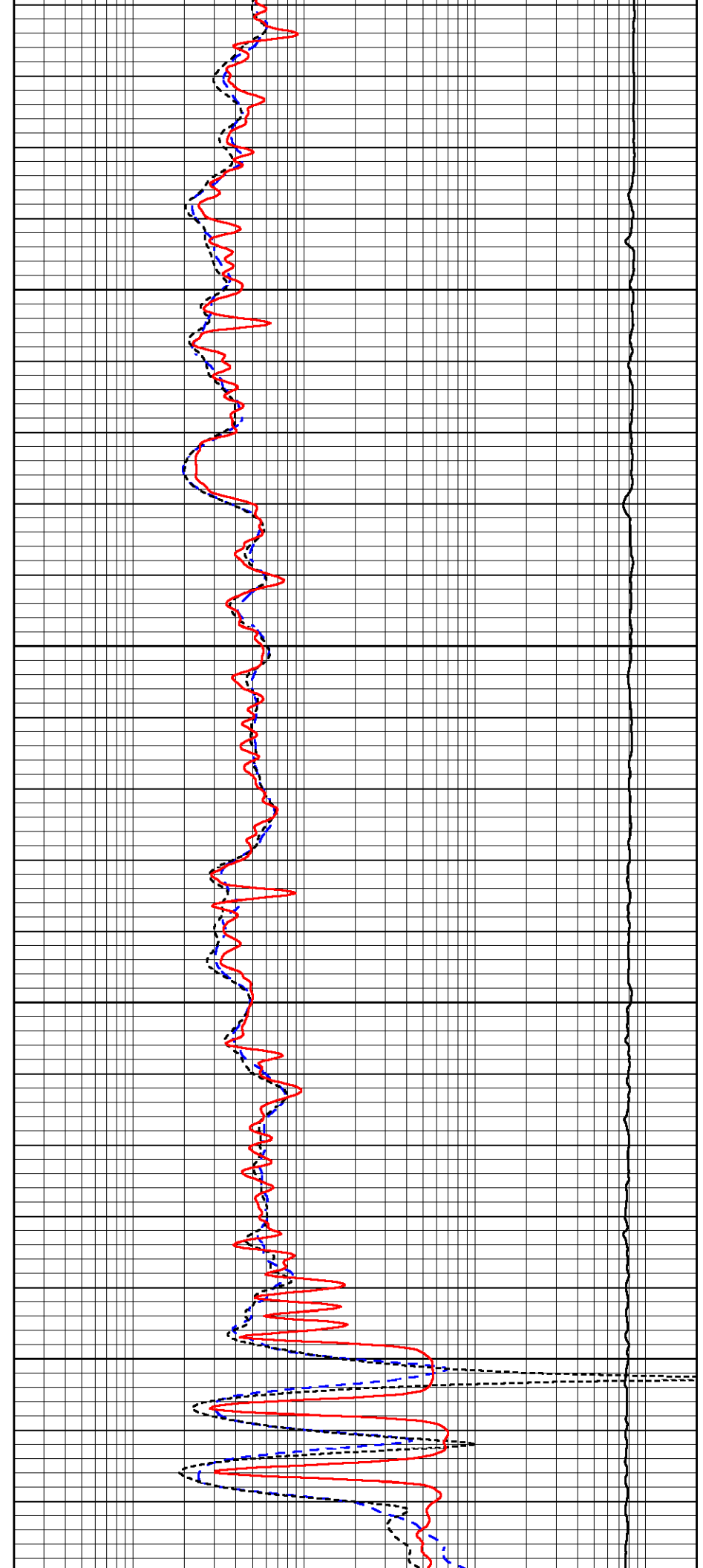


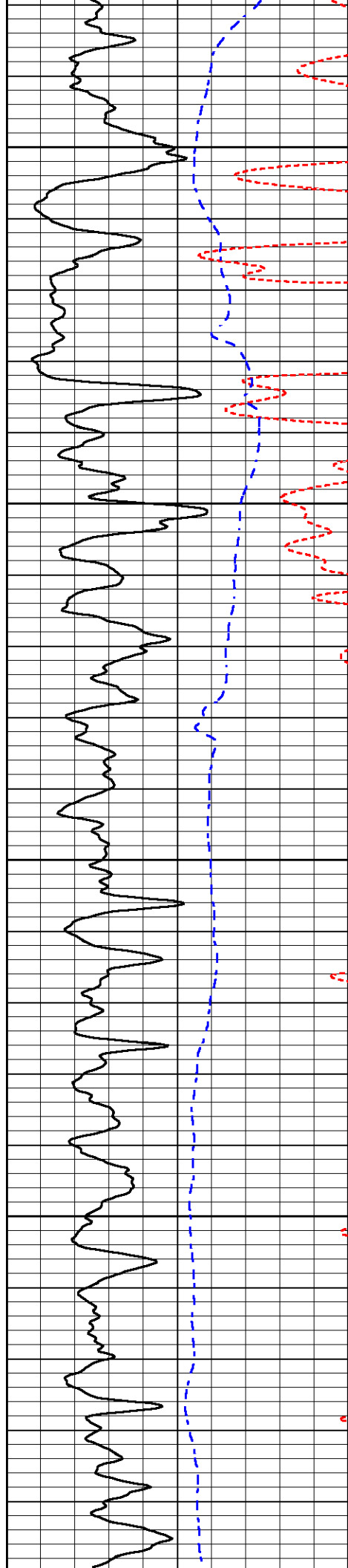
1850

1900

1950

2000





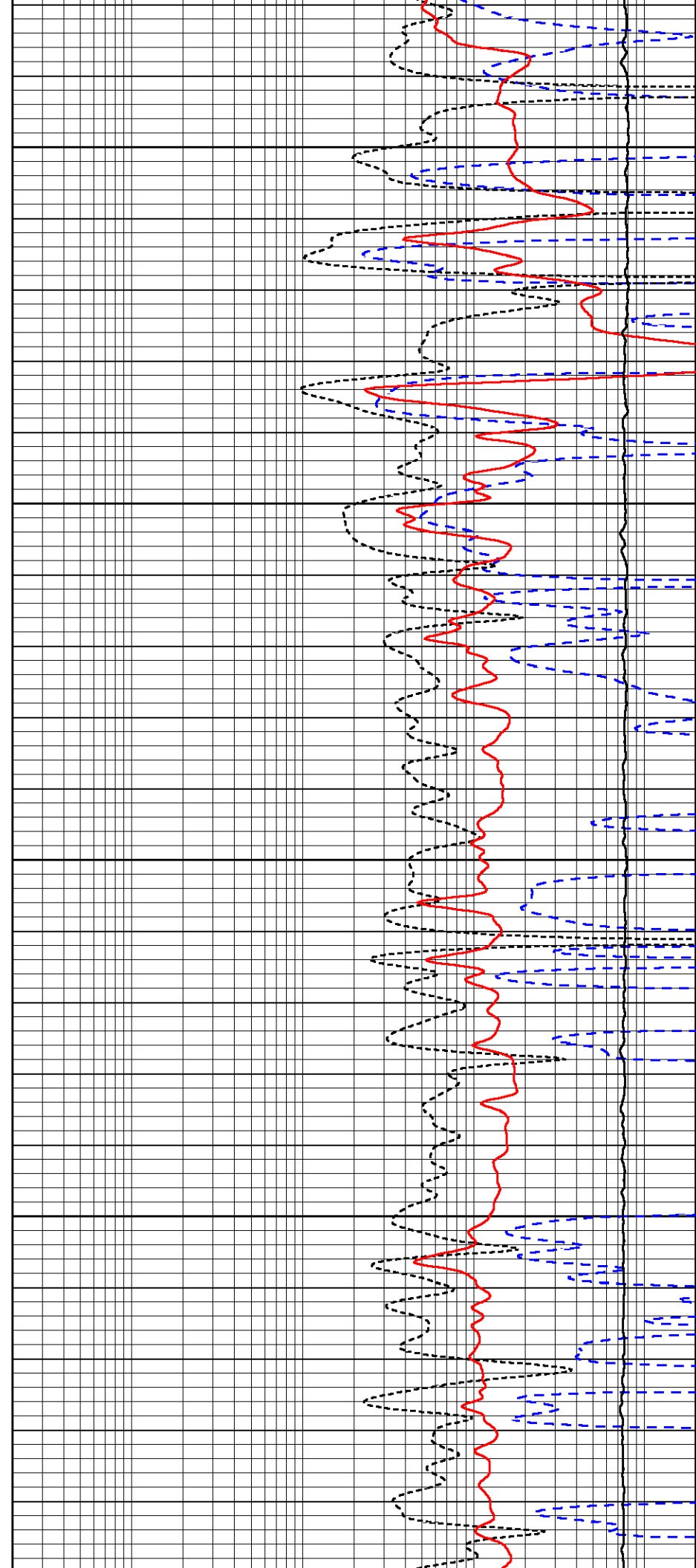
2050

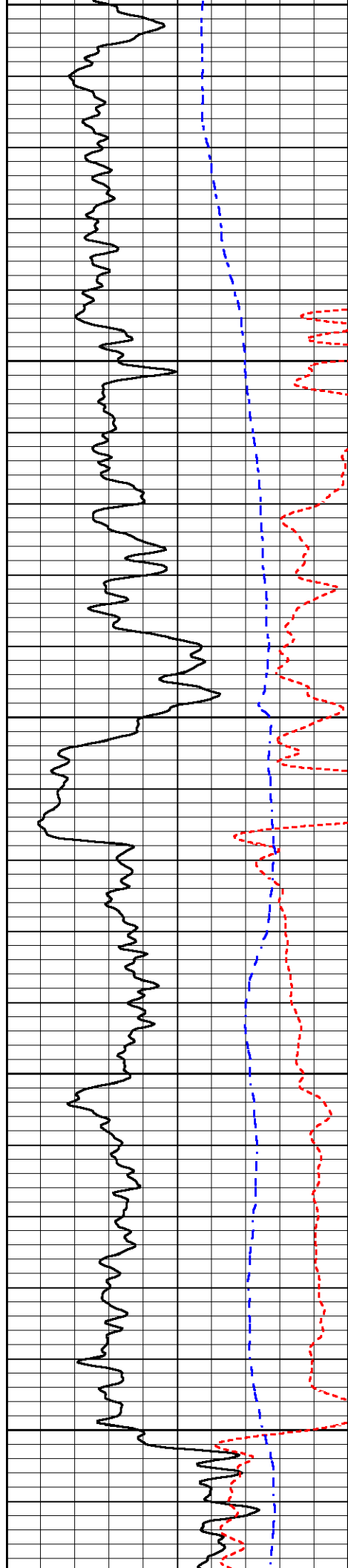
2100

2150

2200

2250





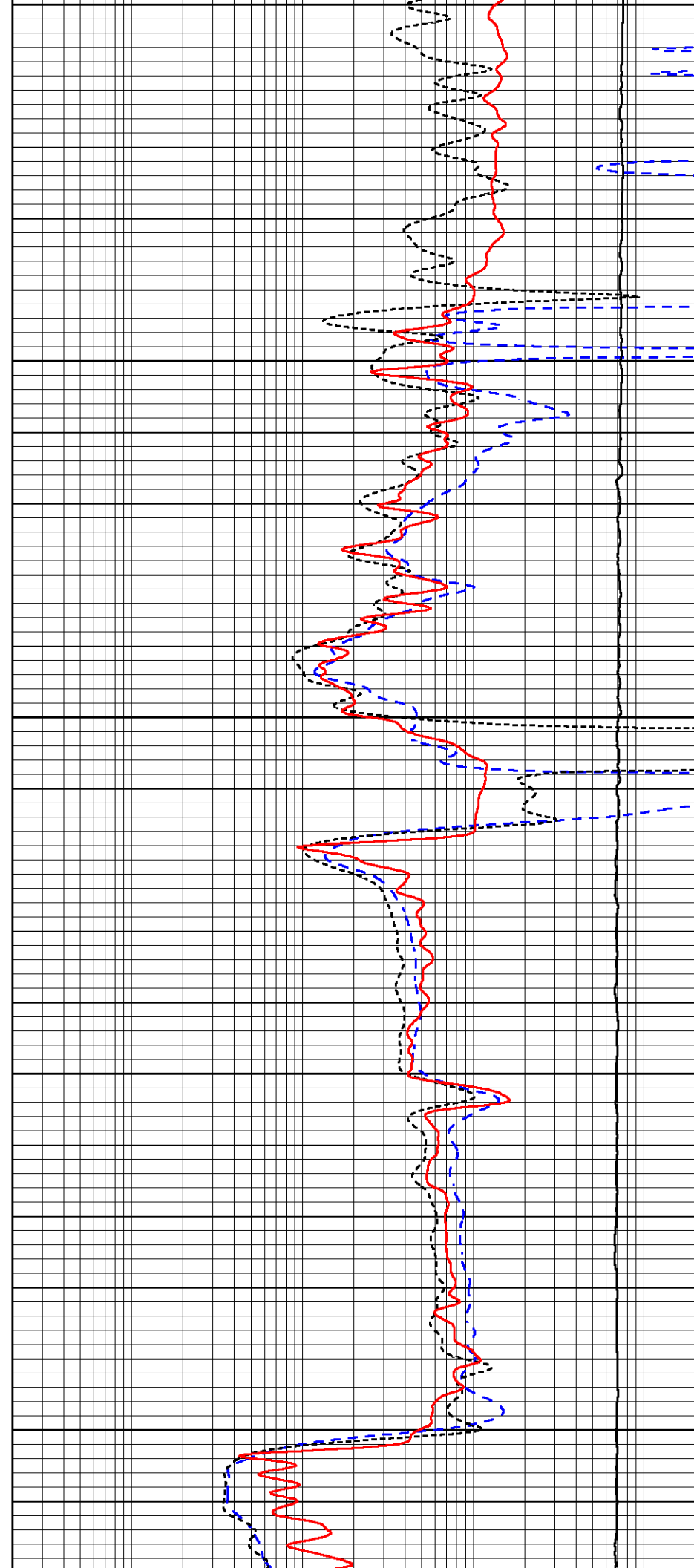
2250

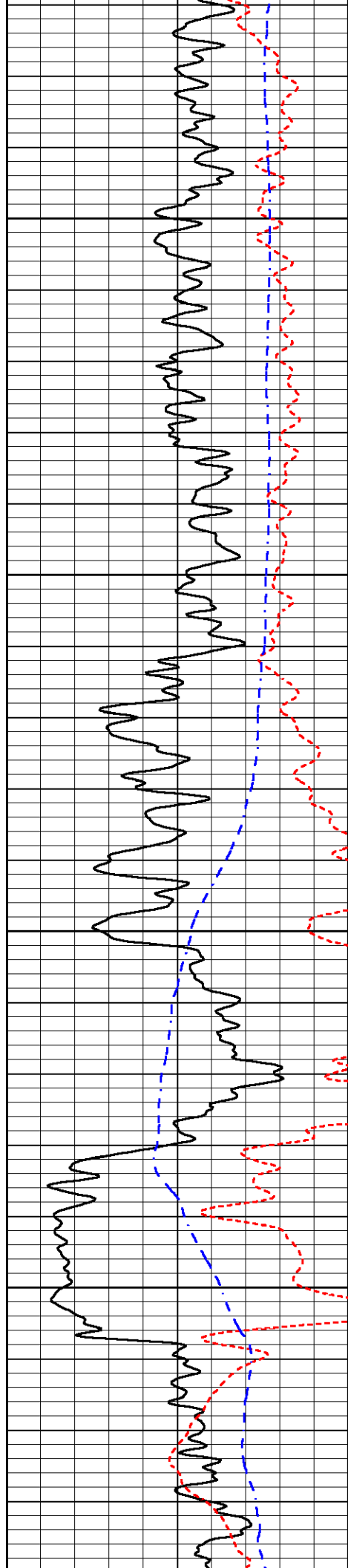
2300

2350

2400

2450



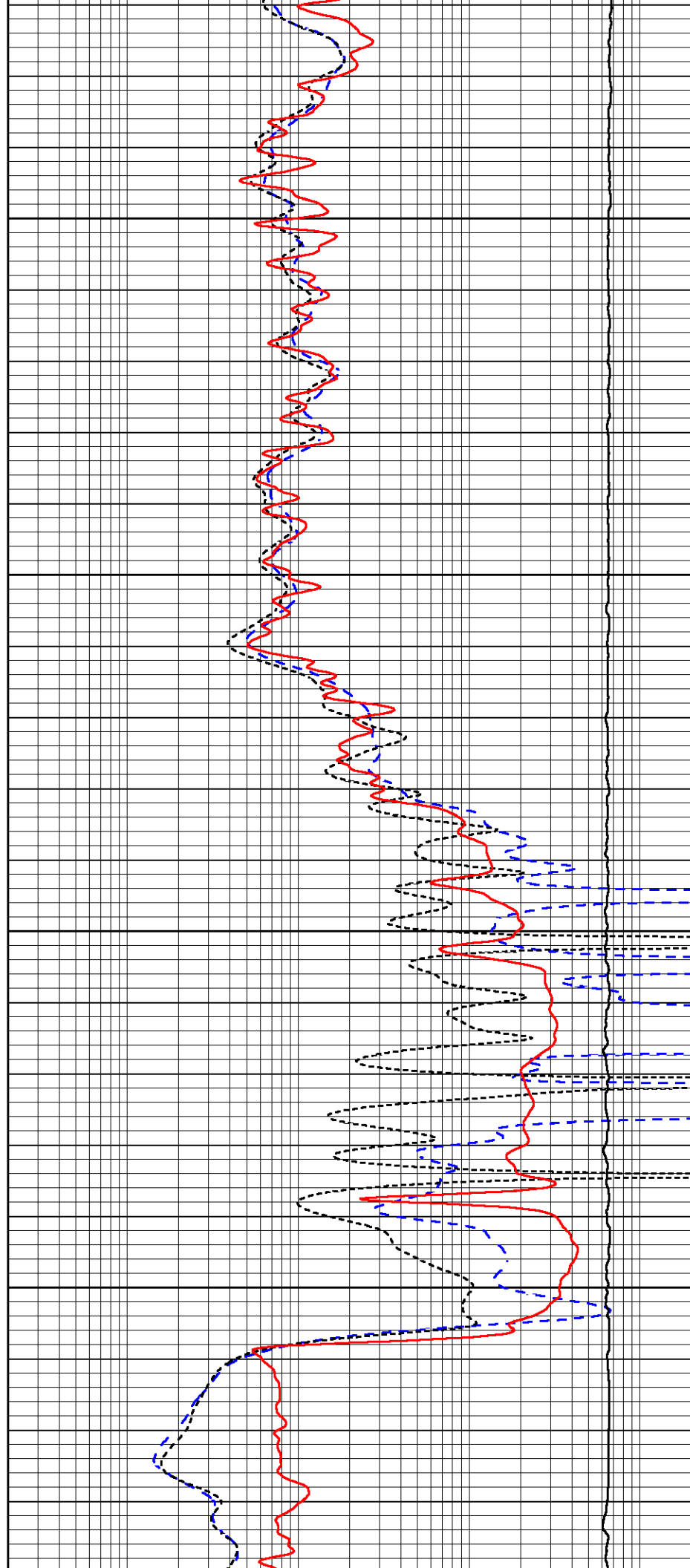


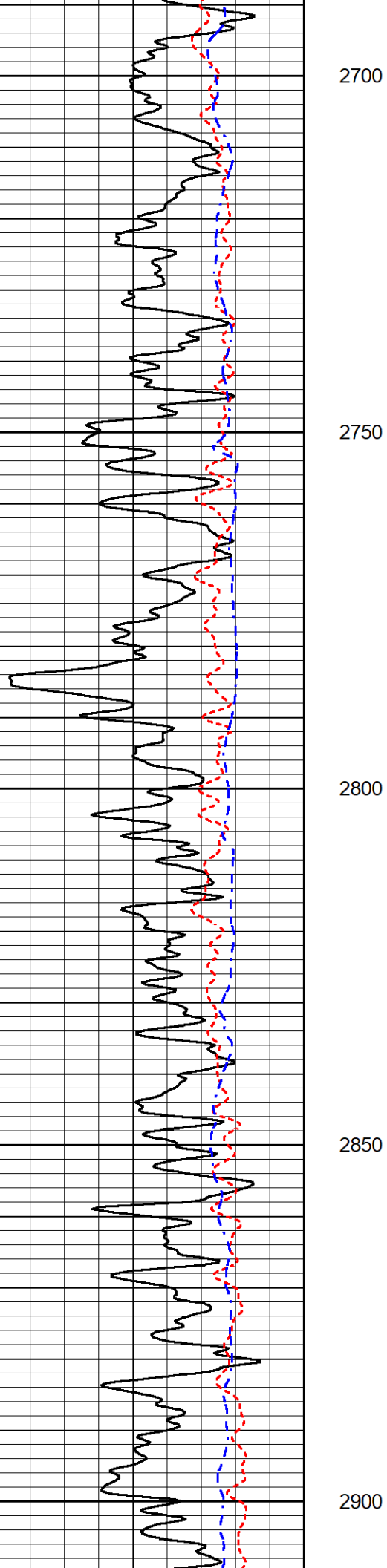
2500

2550

2600

2650





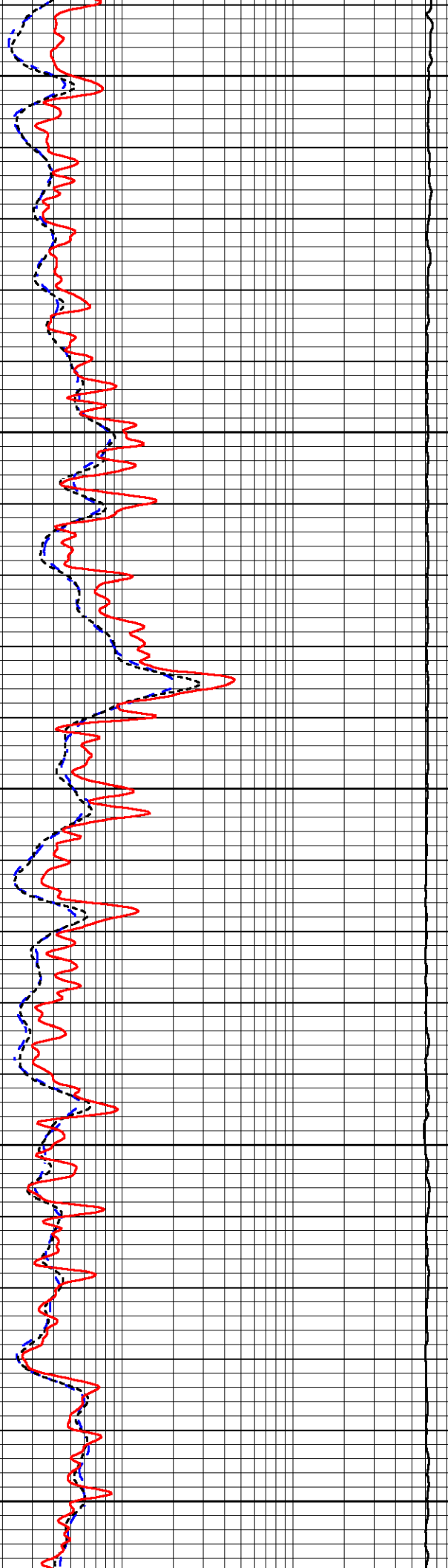
2700

2750

2800

2850

2900



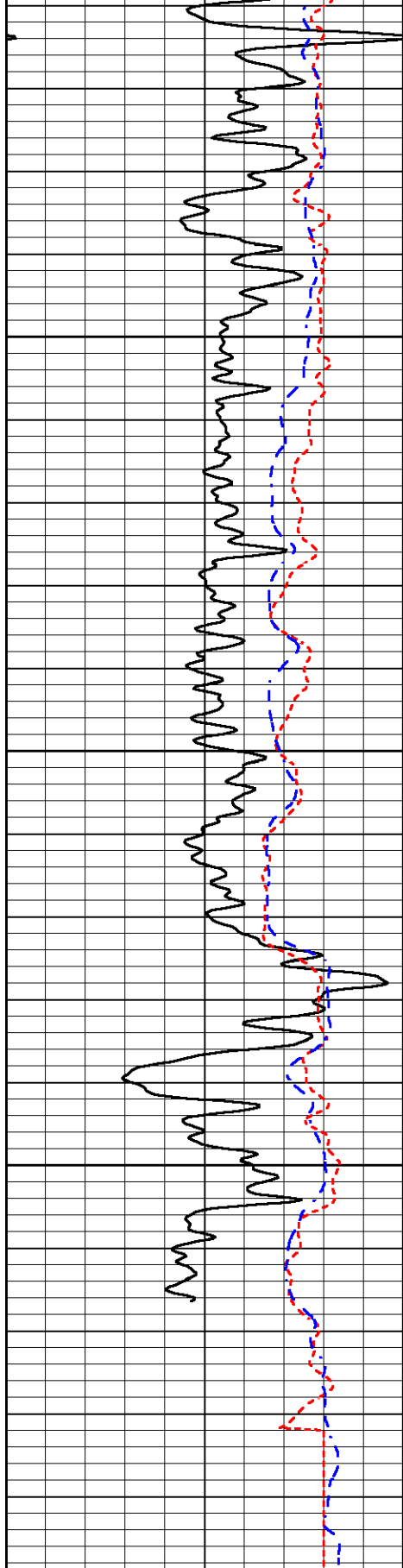
2700

2750

2800

2850

2900

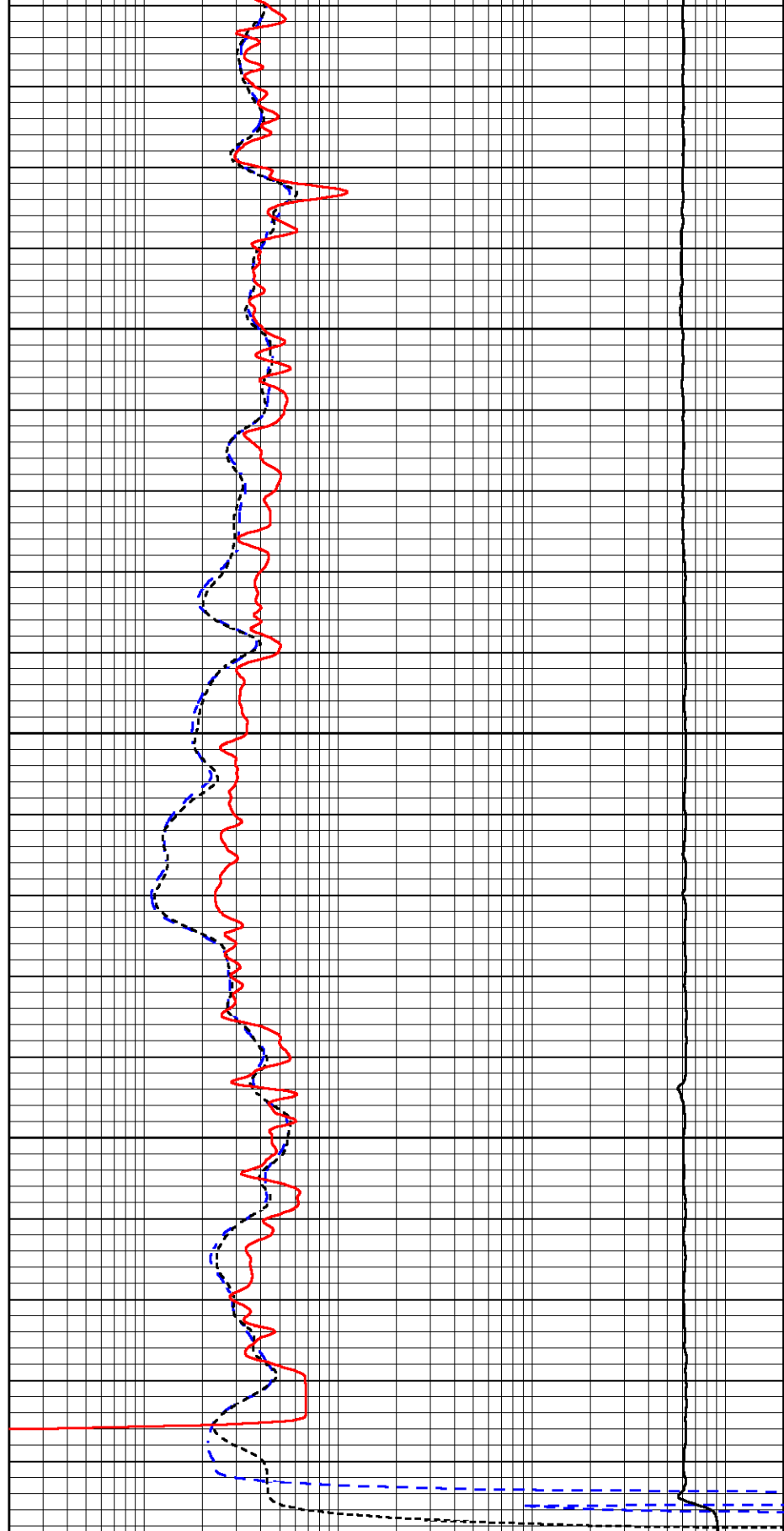


0	Gamma Ray (GAPI)	150
-160	RXORT	40
-200	SP (mV)	0

2950

3000

3050



0.2	Deep Resistivity (Ohm-m)	2000
0.2	Medium Resistivity (Ohm-m)	2000
0.2	RLL3 (Ohm-m)	2000
10000	Line Tension (lb)	0

REPEAT SECTION



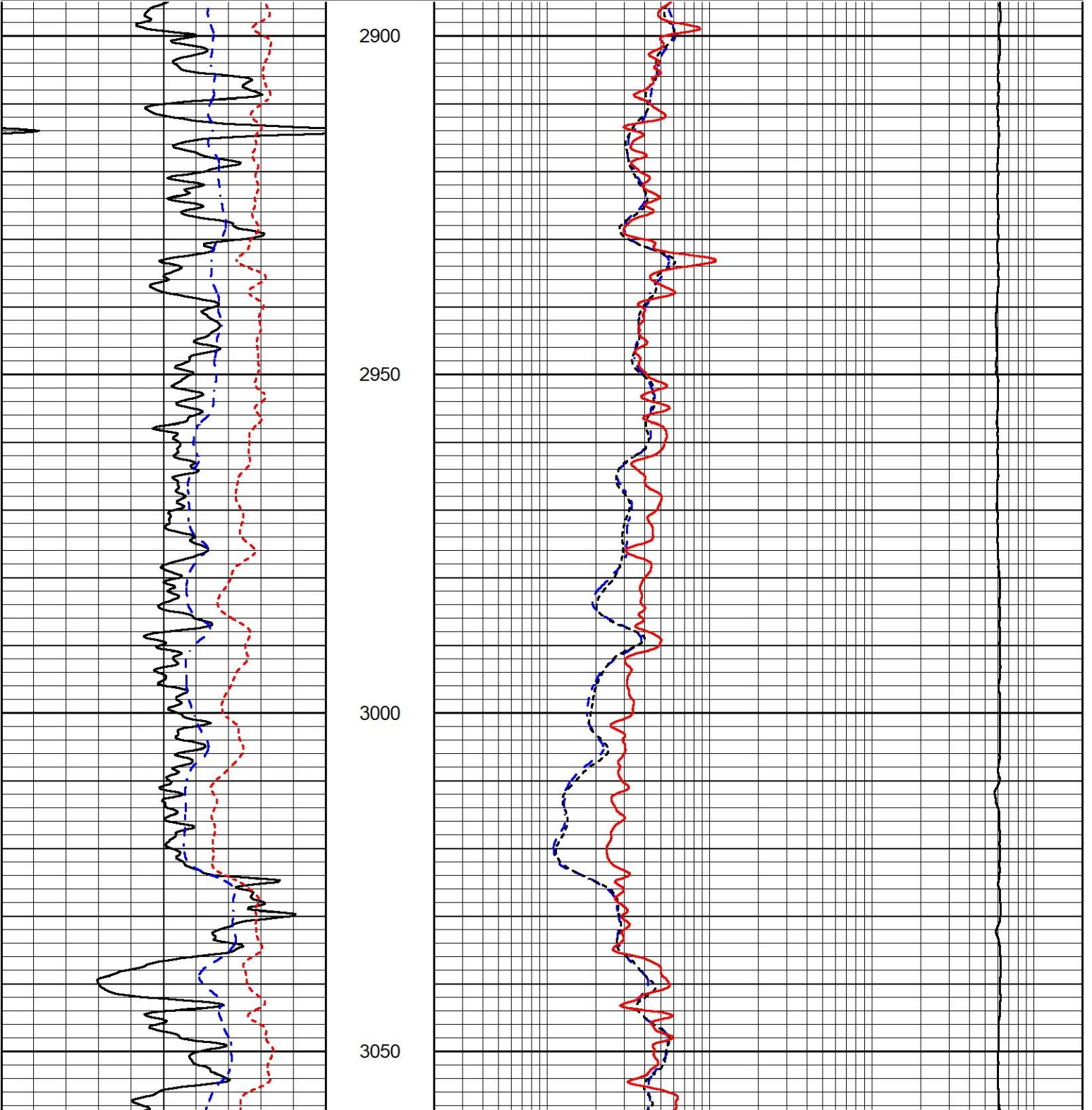
REPEAT SECTION

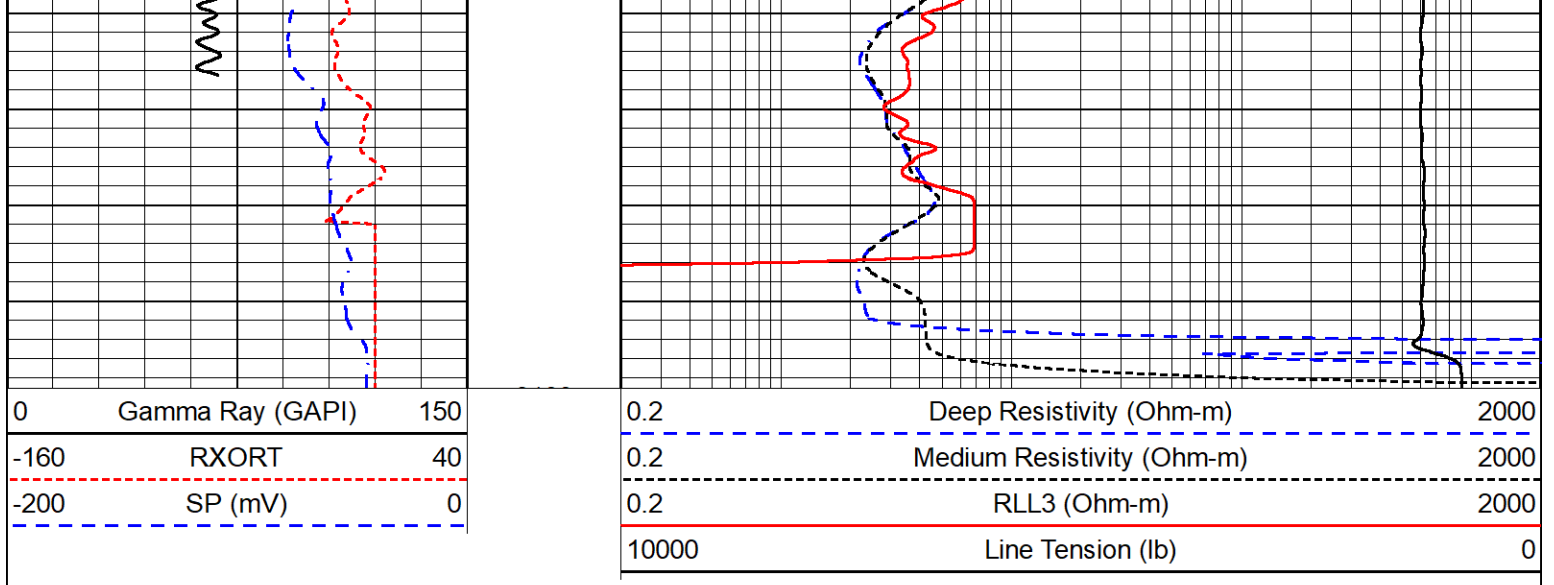
REPEAT PASS

Database File iconic_tarman #2.db
 Dataset Pathname Stack/pass2.1
 Presentation Format _dil
 Dataset Creation Mon Aug 15 19:29:12 2022
 Charted by Depth in Feet scaled 1:240

0	Gamma Ray (GAPI)	150
-160	RXORT	40
-200	SP (mV)	0

0.2	Deep Resistivity (Ohm-m)	2000
0.2	Medium Resistivity (Ohm-m)	2000
0.2	RLL3 (Ohm-m)	2000
10000	Line Tension (lb)	0





Calibration Report

Database File iconic_tarman #2.db
 Dataset Pathname Stack/pass3.1
 Dataset Creation Mon Aug 15 19:57:11 2022

Dual Induction Calibration Report

Serial-Model: 502 HT-M&W
 Surface Cal Performed: Sun Jul 24 22:38:00 2022

Loop:	Readings		References			Results	
	Air	Loop	Air	Loop	mmho/m	m	b
Deep	83.639	487.104	0.000	255.800	mmho/m	0.454	-32.000
Medium	113.335	1585.690	0.000	255.800	mmho/m	0.350	-7.000

Compensated Density Calibration Report

Serial-Model: 302-02-M&W
 Source #: 20762B
 Master Calibration Performed: Wed Jun 22 01:19:51 2022

Master Calibration

	Density		Far Detector	Near Detector	
Magnesium	1.755	g/cc	4422.04	6163.44	cps
Aluminum	2.665	g/cc	835.14	3912.91	cps
Spine Angle = 74.75			Density/Spine Ratio = 0.527		
	Size		Reading		
Small Ring	8.00	in	0.53		
Large Ring	30.00	in	0.60		

Compensated Neutron Calibration Report

Serial Number: 207-MW
 Tool Model: M&W

CALIBRATION

Detector	Readings	Target	Normalization
Short Space	6240.00 cps	1000.00 cps	1.6025
Long Space	460.00 cps	1000.00 cps	1.9500

PRE-SURVEY VERIFICATION

	Detector	Readings	Measured	Target
1)	Short Space	cps		
	Long Space	cps	pu	pu
2)	Short Space	cps		
	Long Space	cps	pu	
3)	Short Space	cps		
	Long Space	cps	pu	

POST-SURVEY VERIFICATION

	Detector	Readings	Measured	Target
1)	Short Space	cps		
	Long Space	cps	pu	pu
2)	Short Space	cps		
	Long Space	cps	pu	pu
3)	Short Space	cps		
	Long Space	cps	pu	pu

Gamma Ray Calibration Report

Serial Number:	106	
Tool Model:	M&W	
Performed:	Fri Dec 3 15:10:46 2021	
Calibrator Value:	500.0	GAPI
Background Reading:	24.0	cps
Calibrator Reading:	637.0	cps
Sensitivity:	0.5500	GAPI/cps



Company	Iconic Oil & Gas LLC
Well	Tarman #2
Field	Byerly
County	Greeley
State	Kansas