



MIDWEST WIRELINE

# DUAL COMP POROSITY LOG

Company: Iconic Oil & Gas LLC  
 Well: Tarman #2  
 Field: Byerly  
 County: Greeley  
 State: Kansas

Company: Iconic Oil & Gas LLC  
 Well: Tarman #2  
 Field: Byerly  
 County: Greeley  
 State: Kansas

Location: 1320 FSL & 1320 FEL  
 SEC 34 TWP 16S RGE 40W  
 Permanent Datum: Ground Level Elevation 3645  
 Log Measured From: Kelly Bushing  
 Drilling Measured From: Kelly Bushing  
 Other Services: DIL  
 K.B. 3656  
 D.F. G.L. 3645

Date	8/15/2022						
Run Number	One						
Type Log	CNL/CDL						
Depth Driller	3095						
Depth Logger	3095						
Bottom Logged Interval	3067						
Top Logged Interval	1000						
Type Fluid In Hole	Chemical						
Salinity, PPM CL	8000						
Density	8.9						
Level	Full						
Max. Rec. Temp. F	107						
Operating Rig Time	2.5 Hours						
Equipment -- Location	P-24 Hays						
Recorded By	T. Martin						
Witnessed By	Ray Velasquez						
Borehole Record							
Run No.	Bit	From	To	Size	Wgt.	From	To
One	12.25	00	311	8.625	23	00	311
Two	7.875	311	TD				
Casing Record							

<<< Fold Here >>>

All interpretations are opinions based on inferences from electrical or other measurements and Midwest Wireline Services, LLC cannot and does not guarantee the accuracy or correctness of any interpretation, and Midwest Wireline Services, LLC will not be liable or responsible for any loss, costs, damages, or expenses incurred or sustained by anyone resulting from any interpretation made by any of our officers, agents or employees.

Comments

N/A DENOTES NOT AVAILABLE OR NON-APPLICABLE.

Tribune, KS, ~11 N to F Rd,  
 2 E, S past pens and W

Log Measured From: Kelly Bushing 11 Ft. Above Permanent Datum

THANK YOU FOR USING MIDWEST WIRELINE LLC  
 785-625-3858

Your Midwest Wireline Crew

Engineer: T. Martin  
 Operator:  
 Operator:  
 Operator:

This Log Record Was Witnessed By

Primary Witness: Ray Velasquez  
 Secondary Witness:  
 Secondary Witness:  
 Secondary Witness:

Sensor	Offset (ft)	Schematic	Description	Length (ft)	O.D. (in)	Weight (lb)
GR	32.75		GR-M&W (106)	3.00	3.50	50.00
CNLSC CNSSC	29.65 28.90		CNT-M&W (207-MW)	5.00	3.50	100.00
LSD DCAL SSD	20.60 20.58 20.10		CDL-M&W (302-02)	8.50	4.00	250.00
RLL3F RLL3	15.50 15.50		DIL-M&W (502 HT)	18.25	3.50	220.00
CILD	8.33					
CILM	4.50					
SP	0.20					

Dataset: iconic\_tarman #2.db: field/well/Stack/pass3.1  
 Total length: 34.75 ft  
 Total weight: 620.00 lb  
 O.D.: 4.00 in

# Log Variables

DatabaseC:\ProgramData\Warrior\Data\iconic\_tarman #2.db  
 Dataset field/well/Stack/pass3.111/\_vars\_

## Top - Bottom

A	BOREID in	BOTTEMP degF	CASEOD in	CASETHCK in	FLUIDDEN g/cc	M	MATRXDEN g/cc
1	7.875	107	4.5	0	1	2	2.71
NPORSEL	PERFS	SNDERR mmho/m	SNDERRM mmho/m	SPSHIFT mV	SRFTEMP degF	SZCOR	TDEPTH ft
Limestone	0	0	0	30	100	Off	3095

## Variable Description

A : Cement Factor (a)  
 BOREID : Borehole I.D.  
 BOTTEMP : Bottom Hole Temperature  
 CASEOD : Casing O.D.  
 CASETHCK : Casing Thickness  
 FLUIDDEN : Fluid Density  
 M : Cement Exp (m)  
 MATRXDEN : Matrix Density

NPORSEL : Neutron Porosity Curve Select  
 PERFS : Perforation Flag  
 SNDERR : Deep Sonde Error Correction  
 SNDERRM : Medium Sonde Error Correction  
 SPSHIFT : S.P. Baseline Offset  
 SRFTEMP : Surface Temperature  
 SZCOR : CN Size Cor. ?  
 TDEPTH : Total Depth

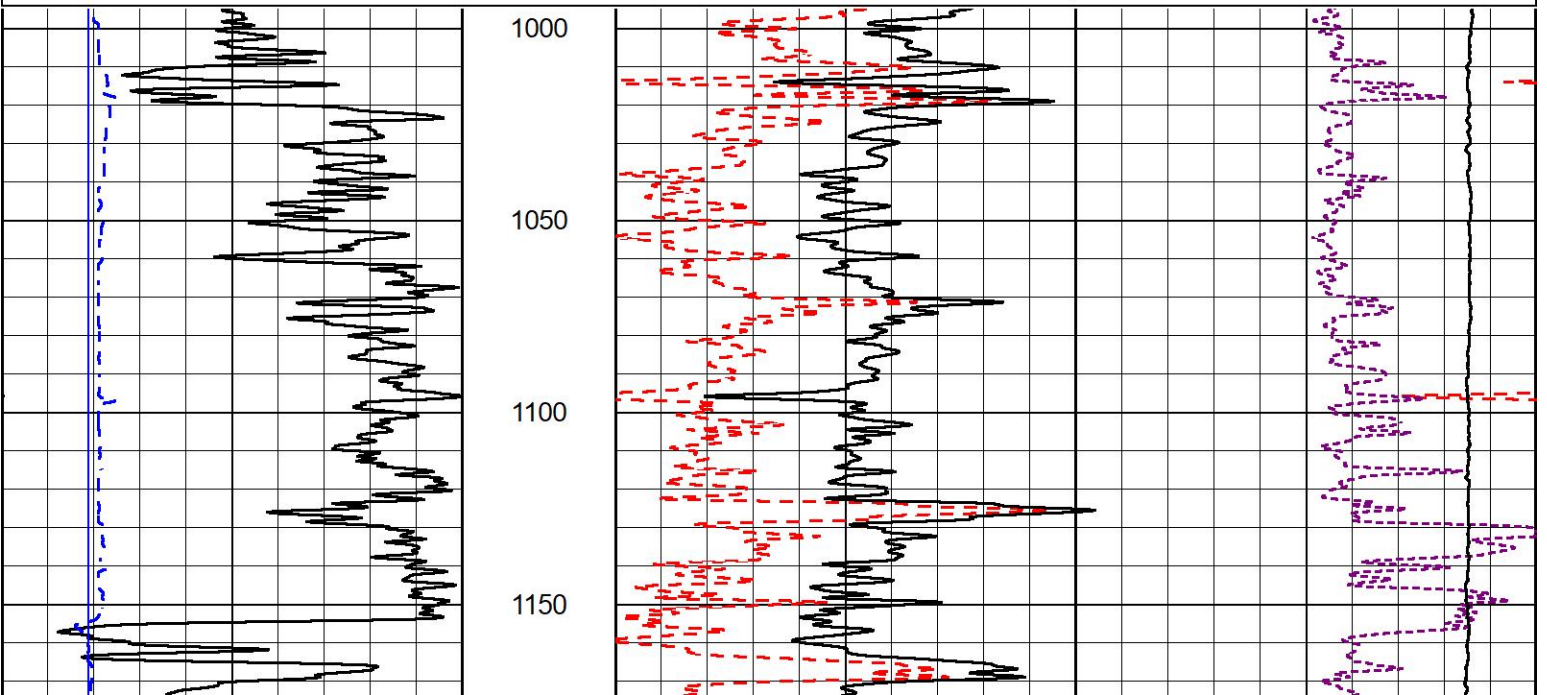


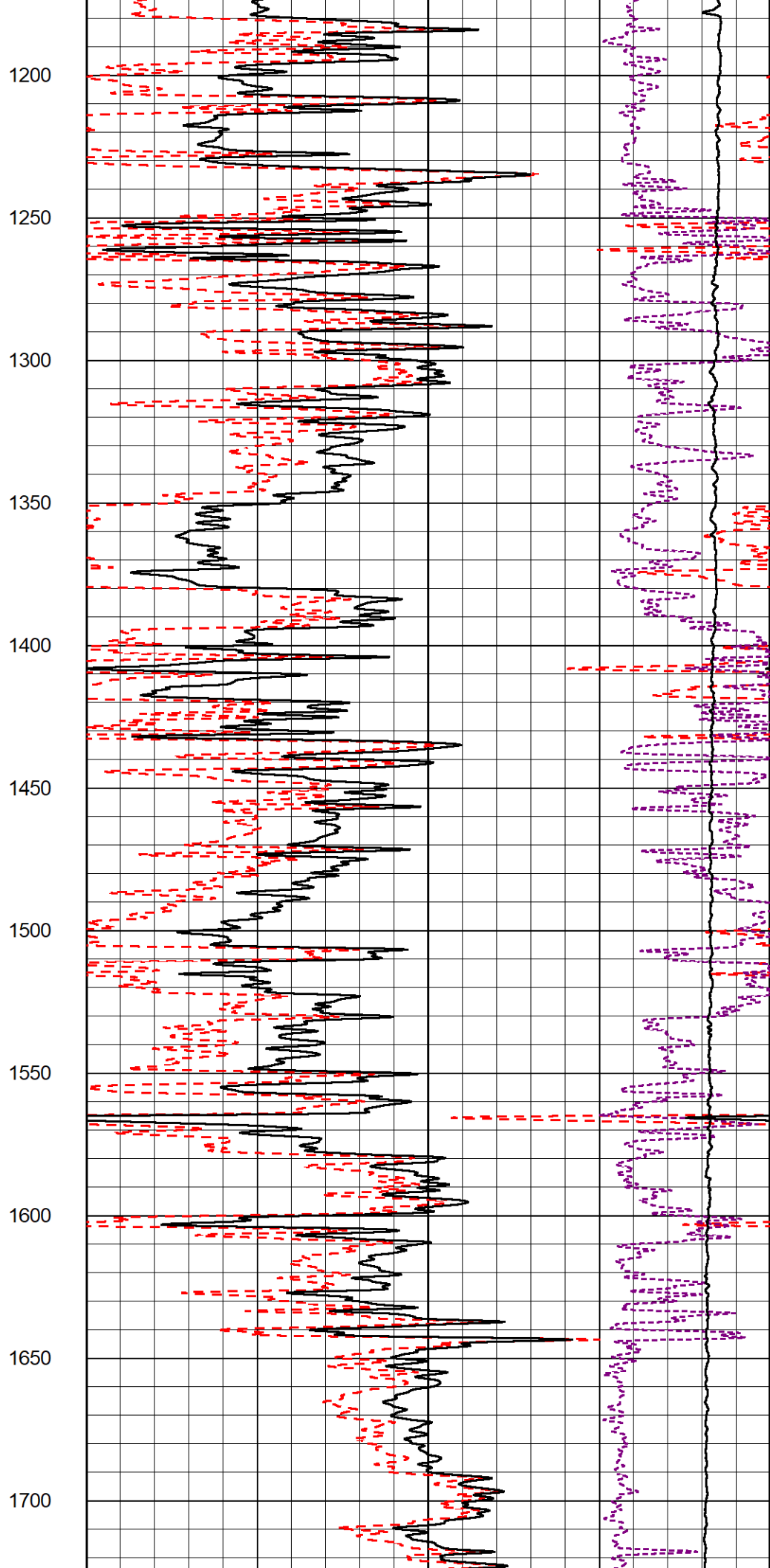
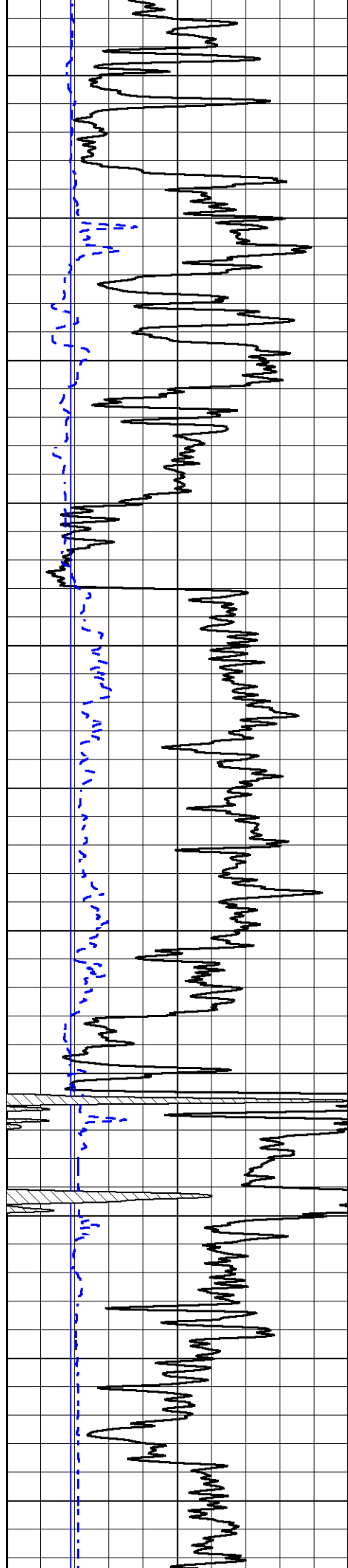
## 2" SCALE BULK DENSITY

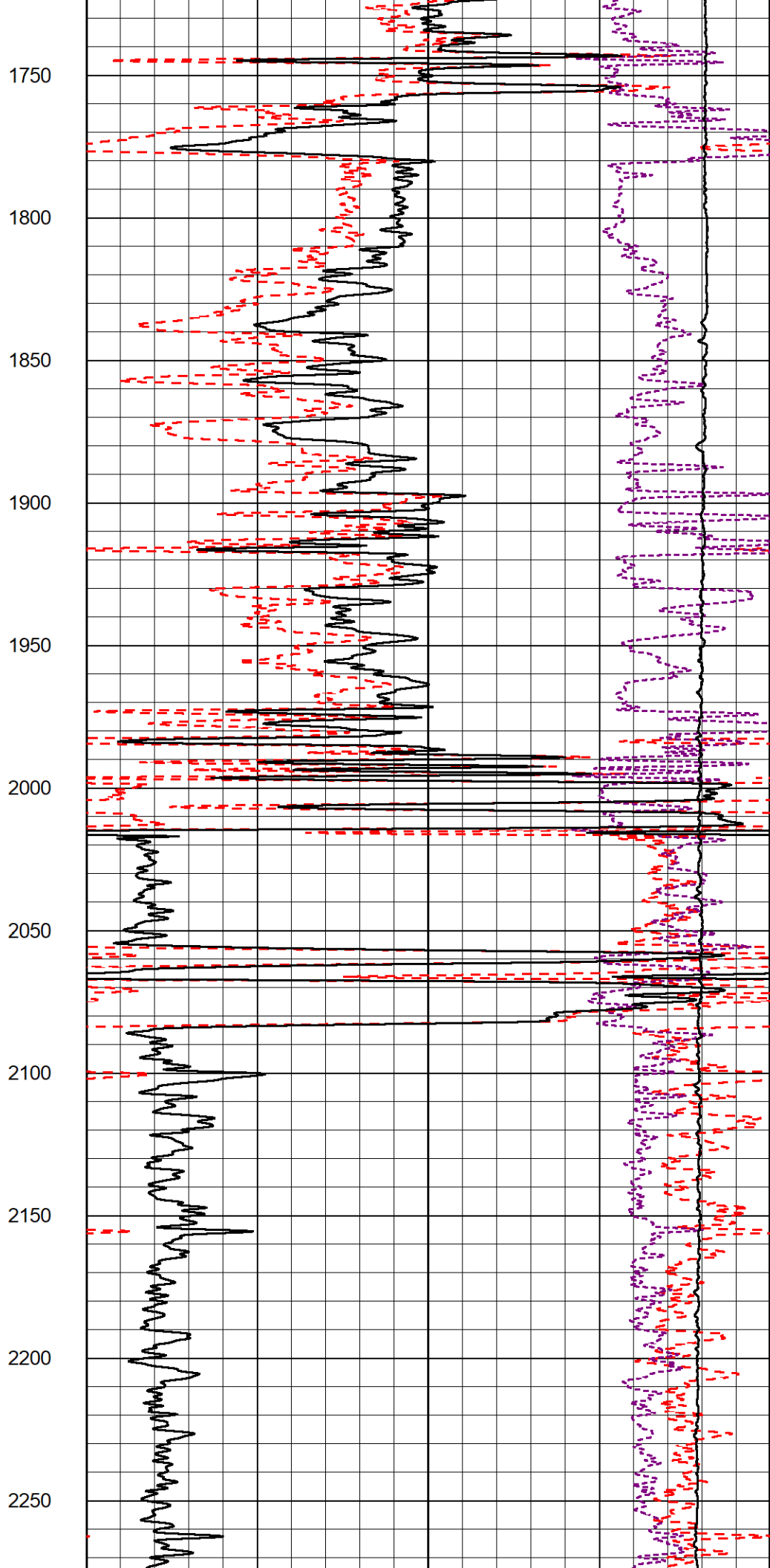
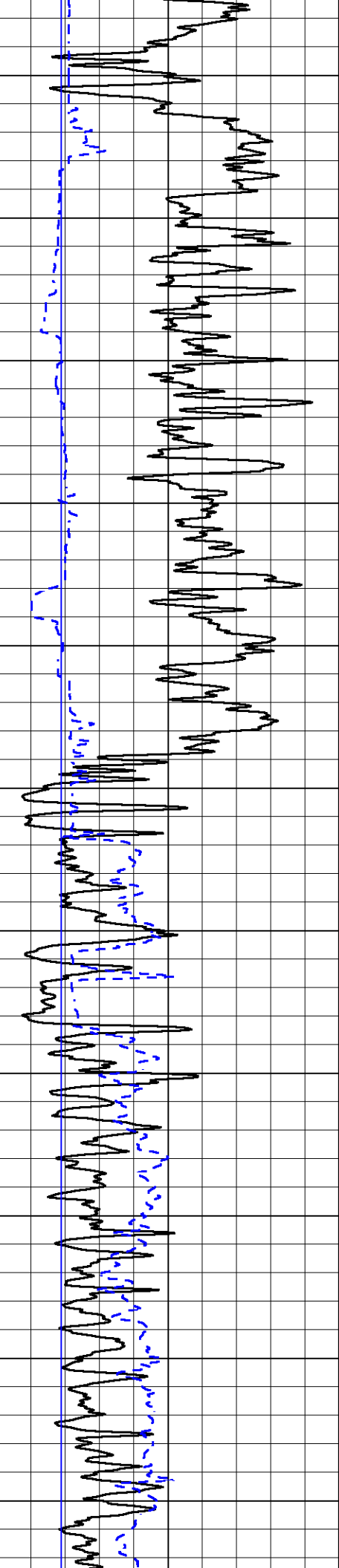
### MAIN PASS

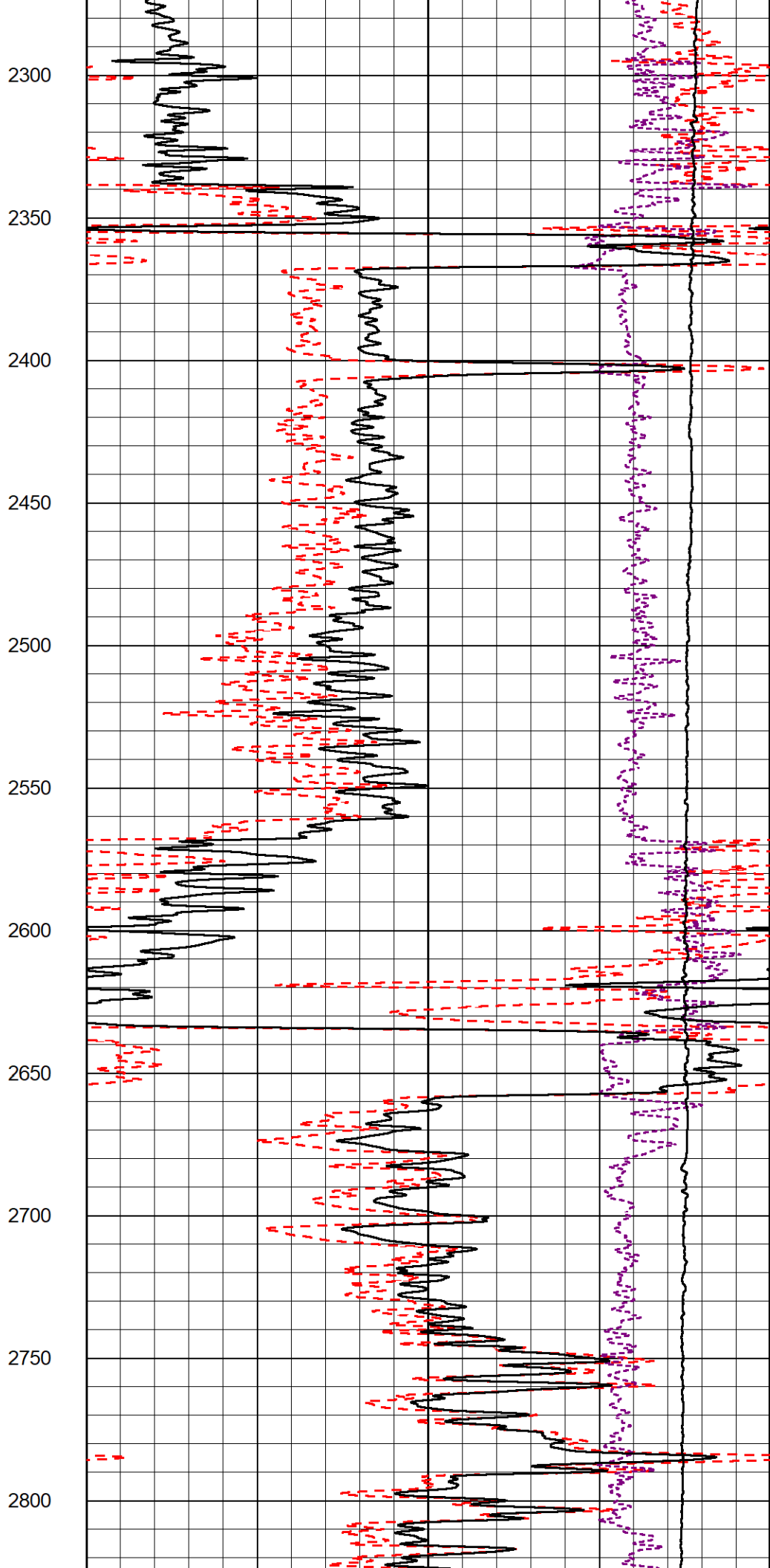
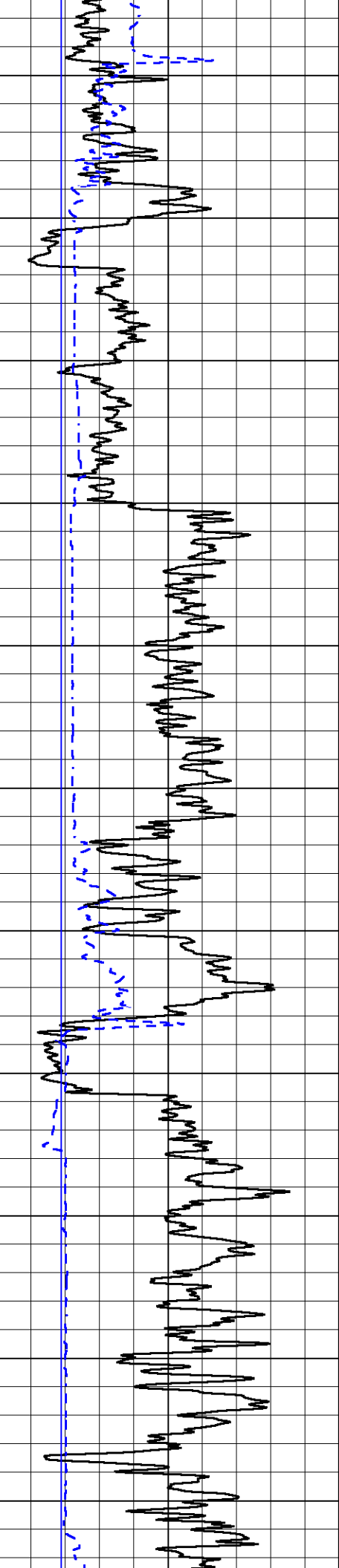
Database File iconic\_tarman #2.db  
 Dataset Pathname Stack/pass3.3  
 Presentation Format \_cdl  
 Dataset Creation Mon Aug 15 19:49:10 2022  
 Charted by Depth in Feet scaled 1:600

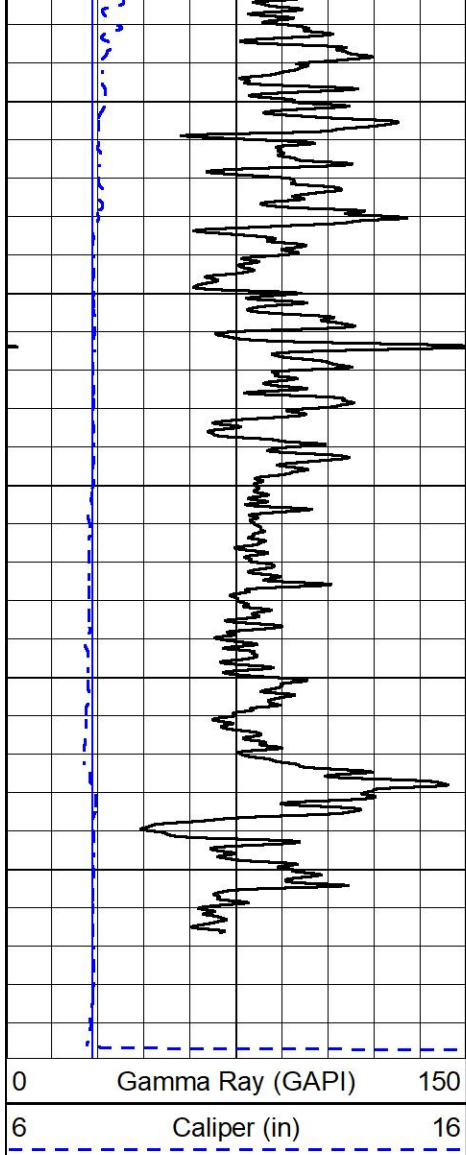
0	Gamma Ray (GAPI)	150	30	Compensated Density (pu)	-10	
6	Caliper (in)	16	2	Bulk Density (g/cc)	3	
			10000	Line Tension (lb)	0	
				-0.25	Correction (g/cc)	0.25



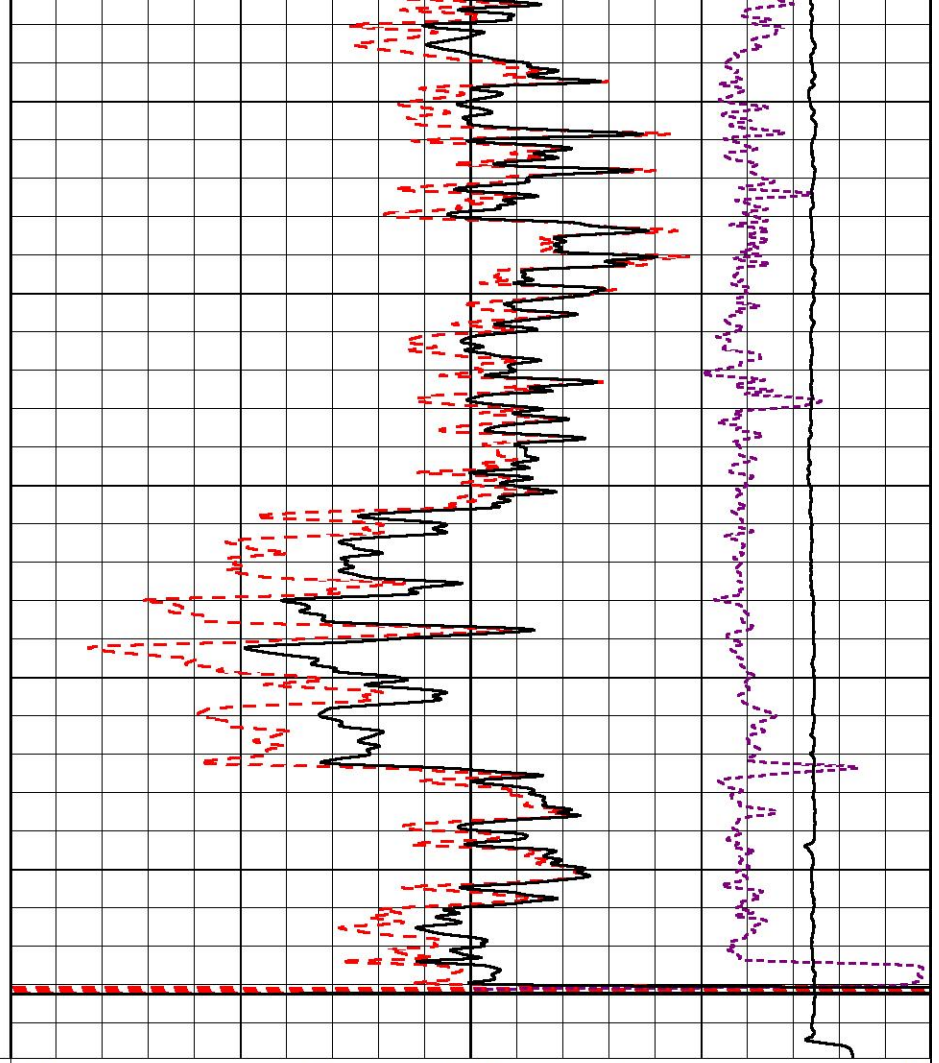








2850  
2900  
2950  
3000  
3050  
3100



30 Compensated Density (pu) -10  
 2 Bulk Density (g/cc) 3  
 10000 Line Tension (lb) 0  
 -0.25 Correction (g/cc) 0.25

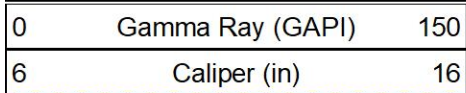


MIDWEST WIRELINE

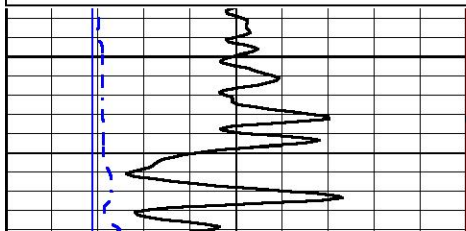
## DETAIL SECTION

### MAIN PASS

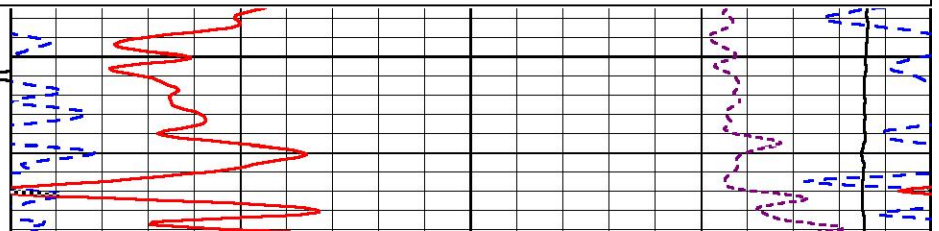
Database File iconic\_tarman #2.db  
 Dataset Pathname Stack/pass3.1  
 Presentation Format \_CNDLS~1  
 Dataset Creation Mon Aug 15 19:57:11 2022  
 Charted by Depth in Feet scaled 1:240

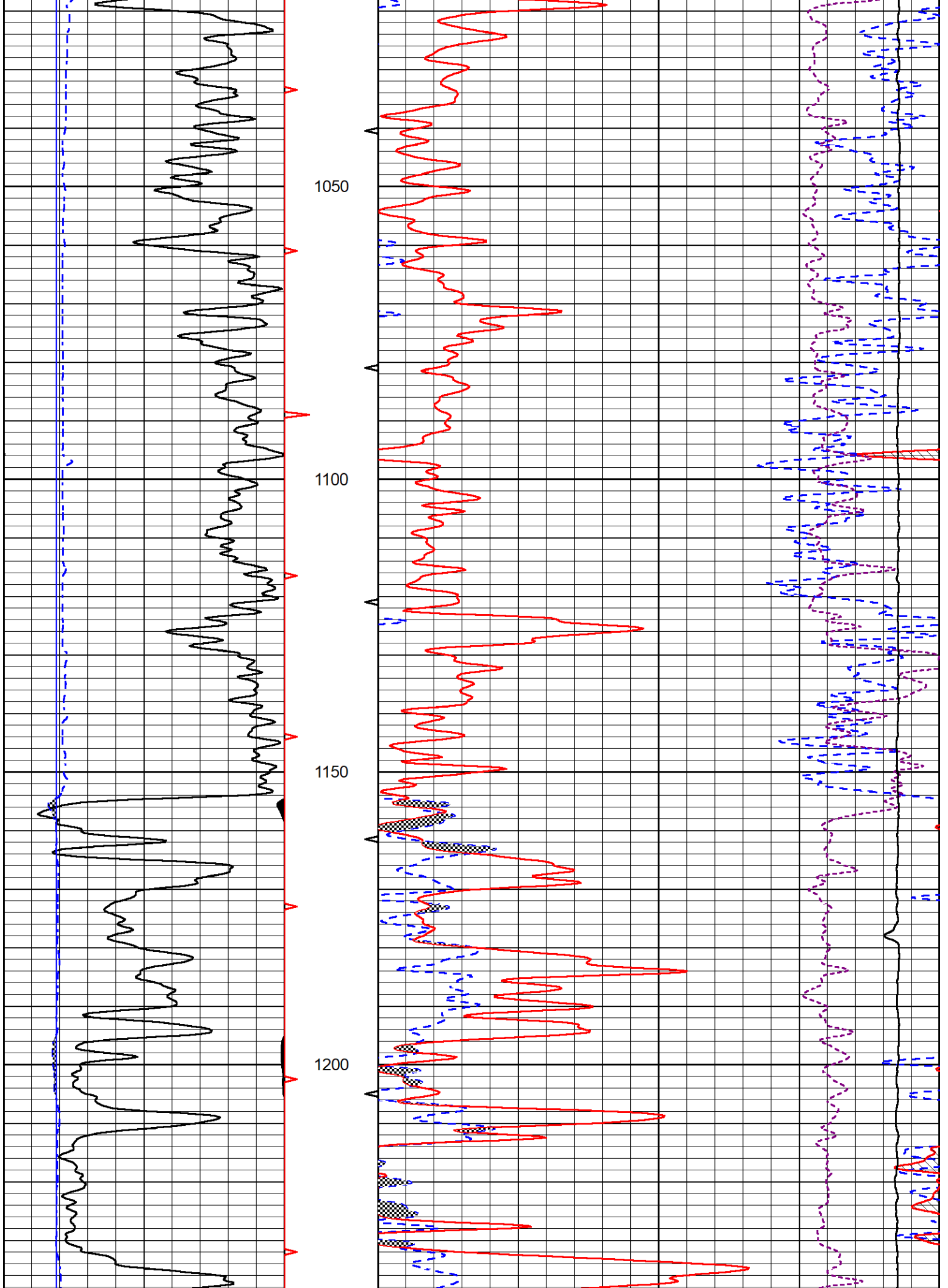


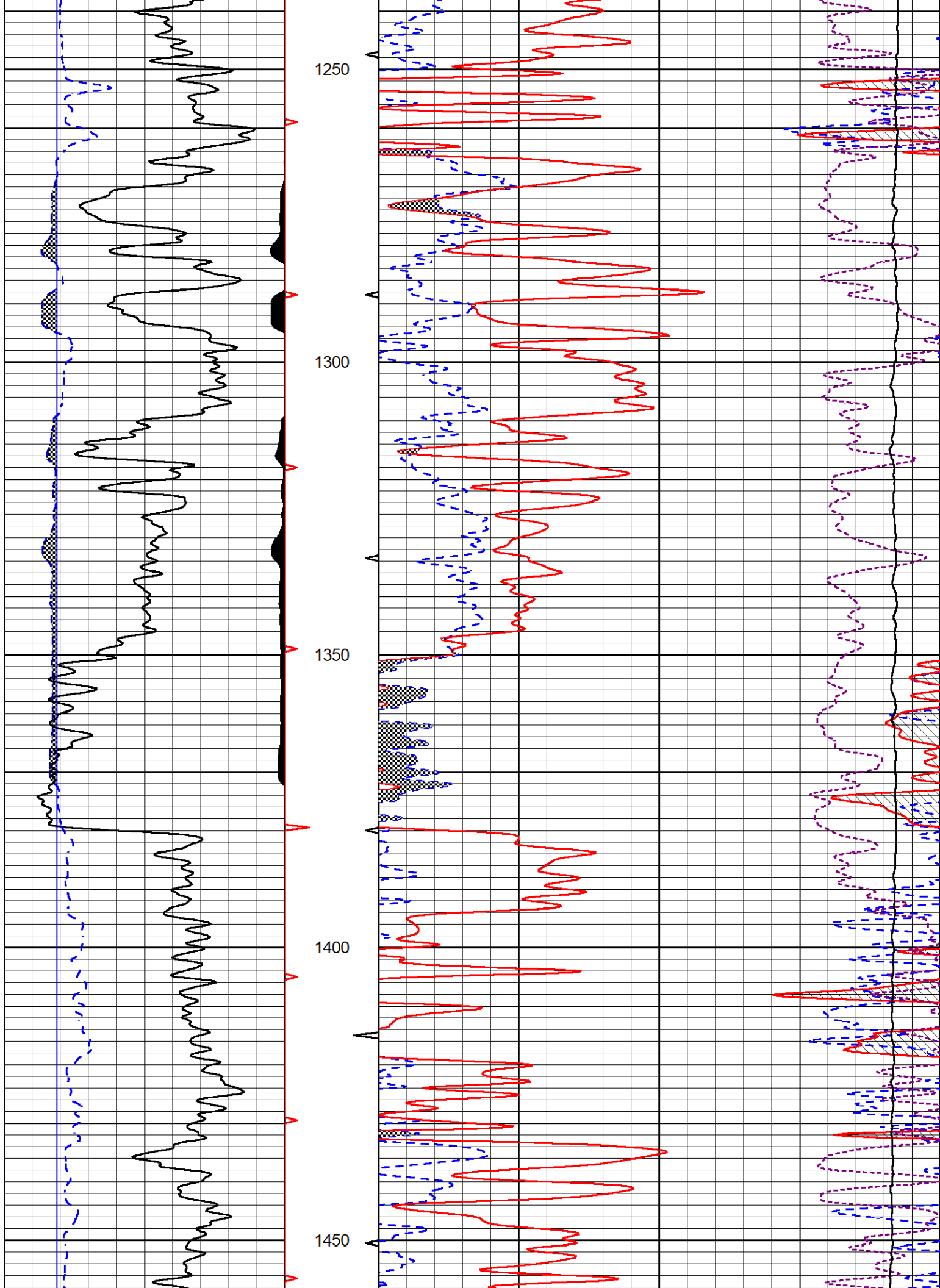
30 Compensated Neutron (pu) -10  
 30 Compensated Density (pu) -10  
 10000 Line Tension (lb) 0  
 -0.25 Correction (g/cc) 0.25

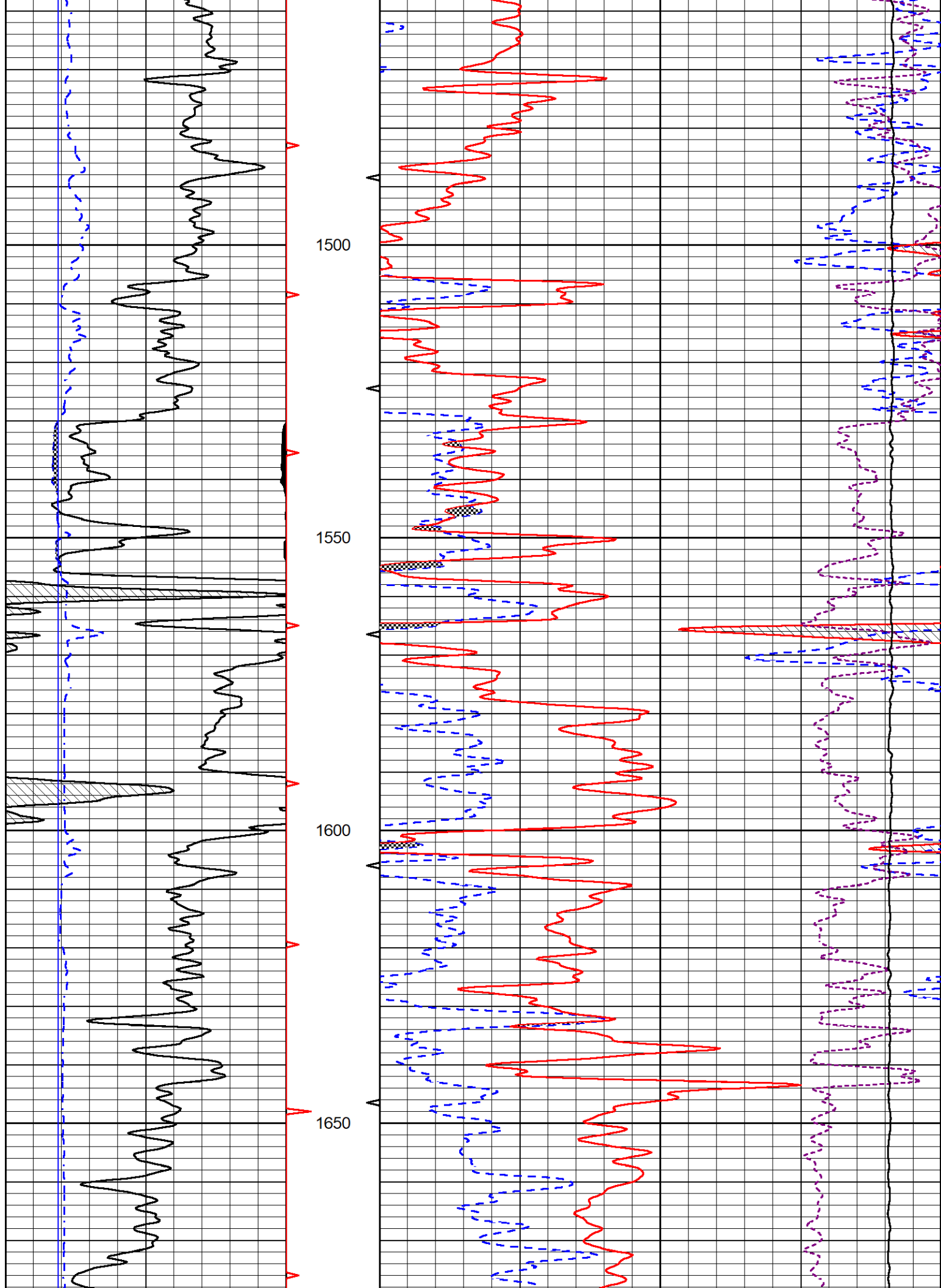


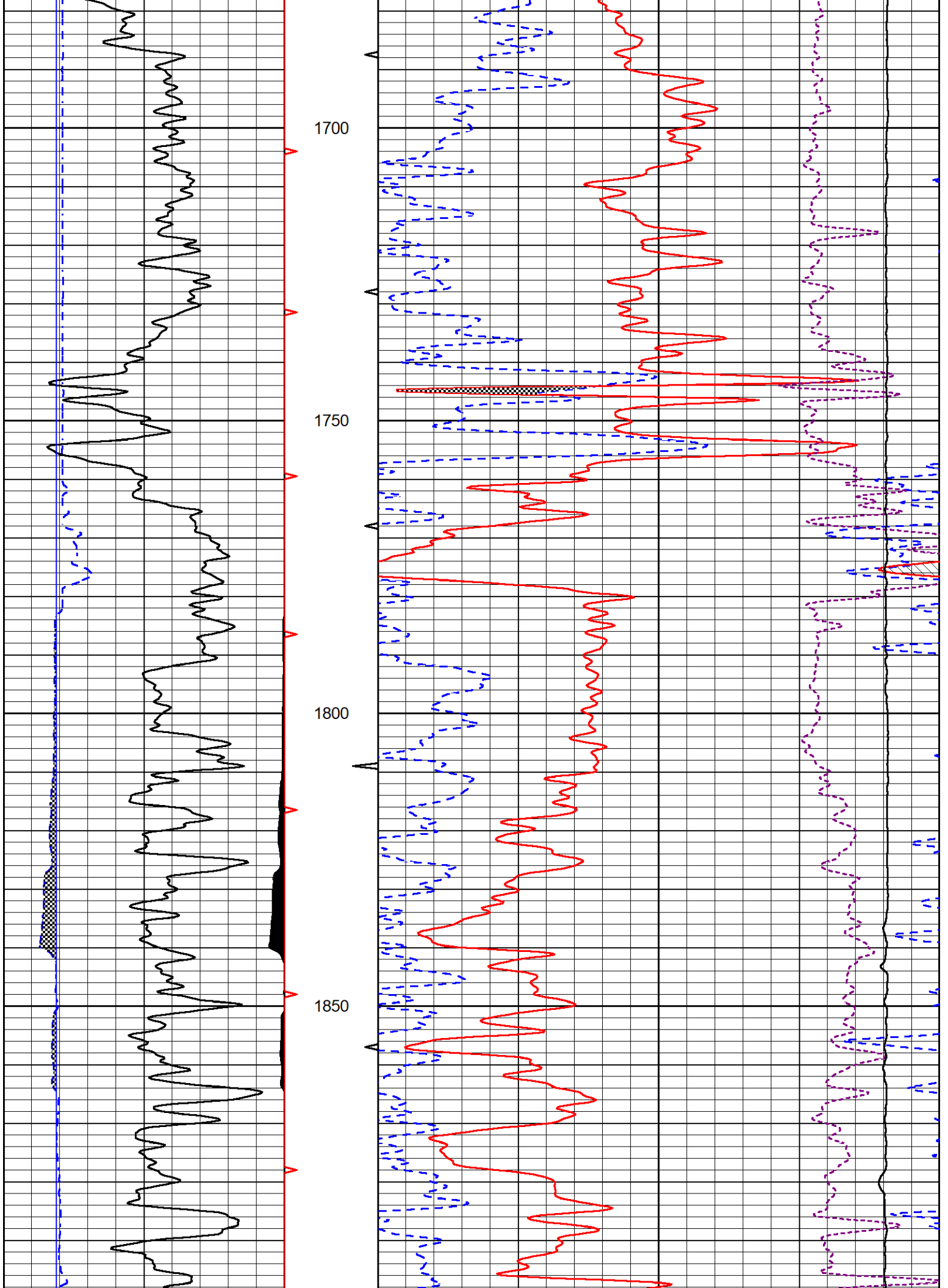
1000

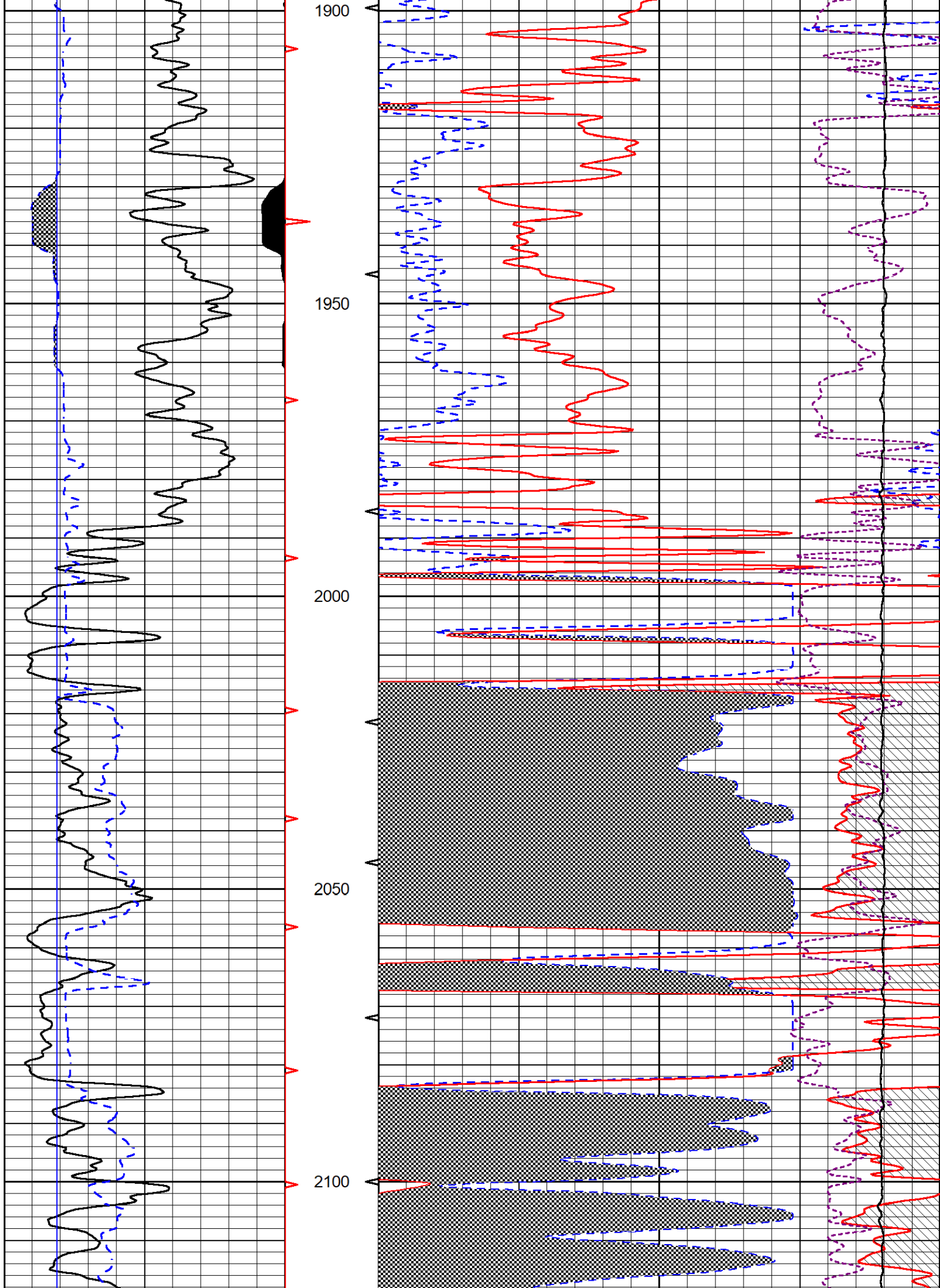


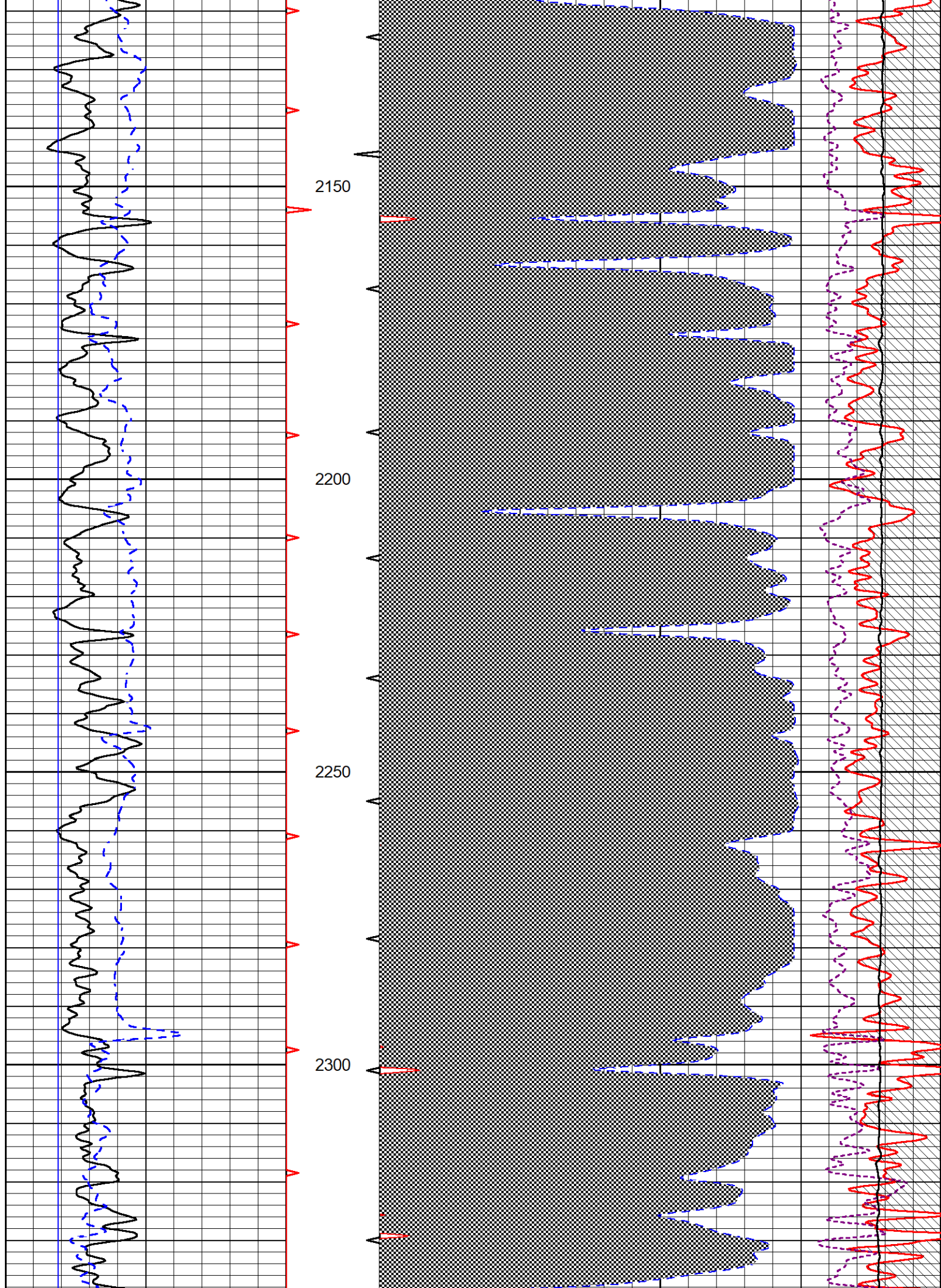


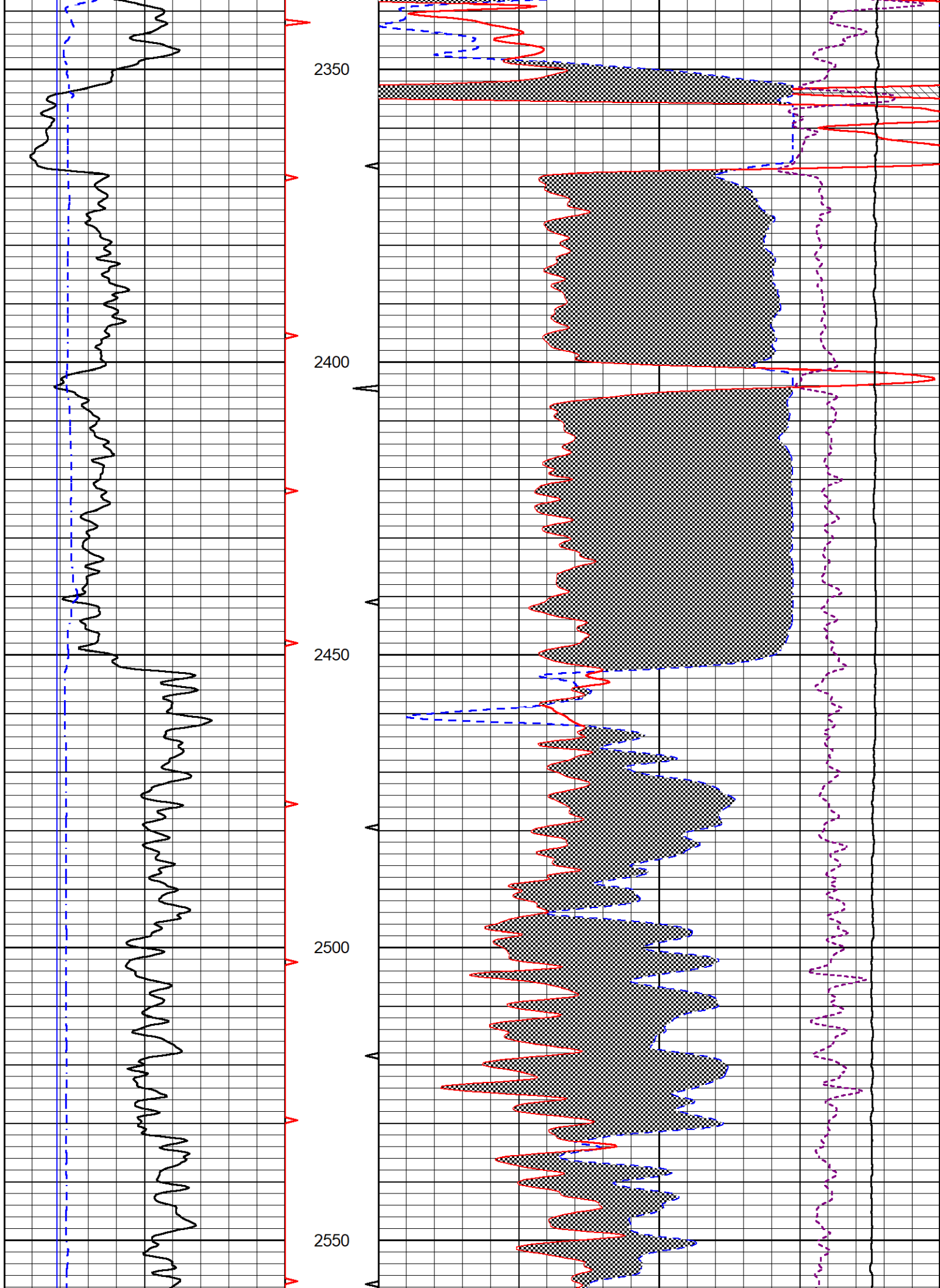


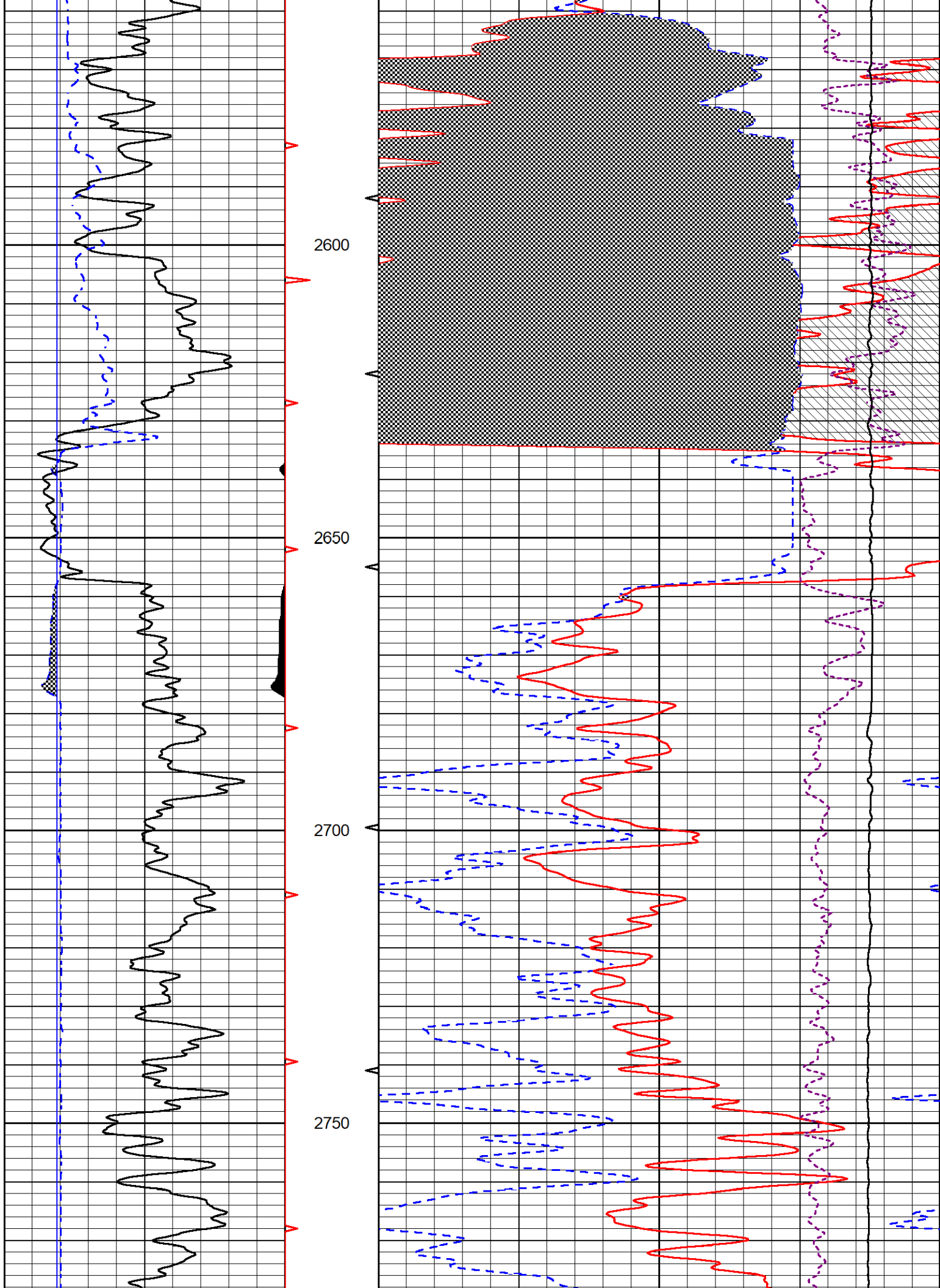


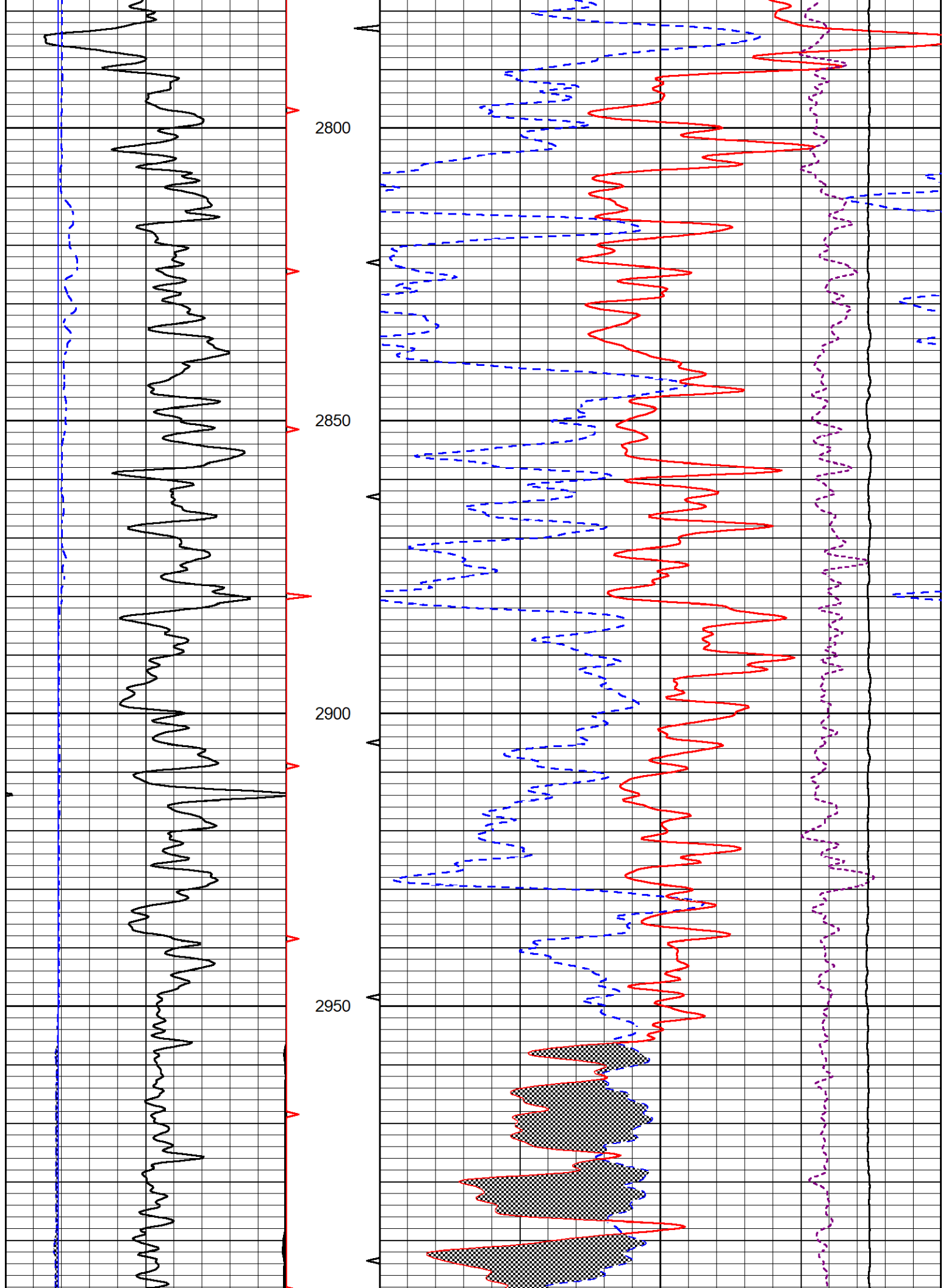


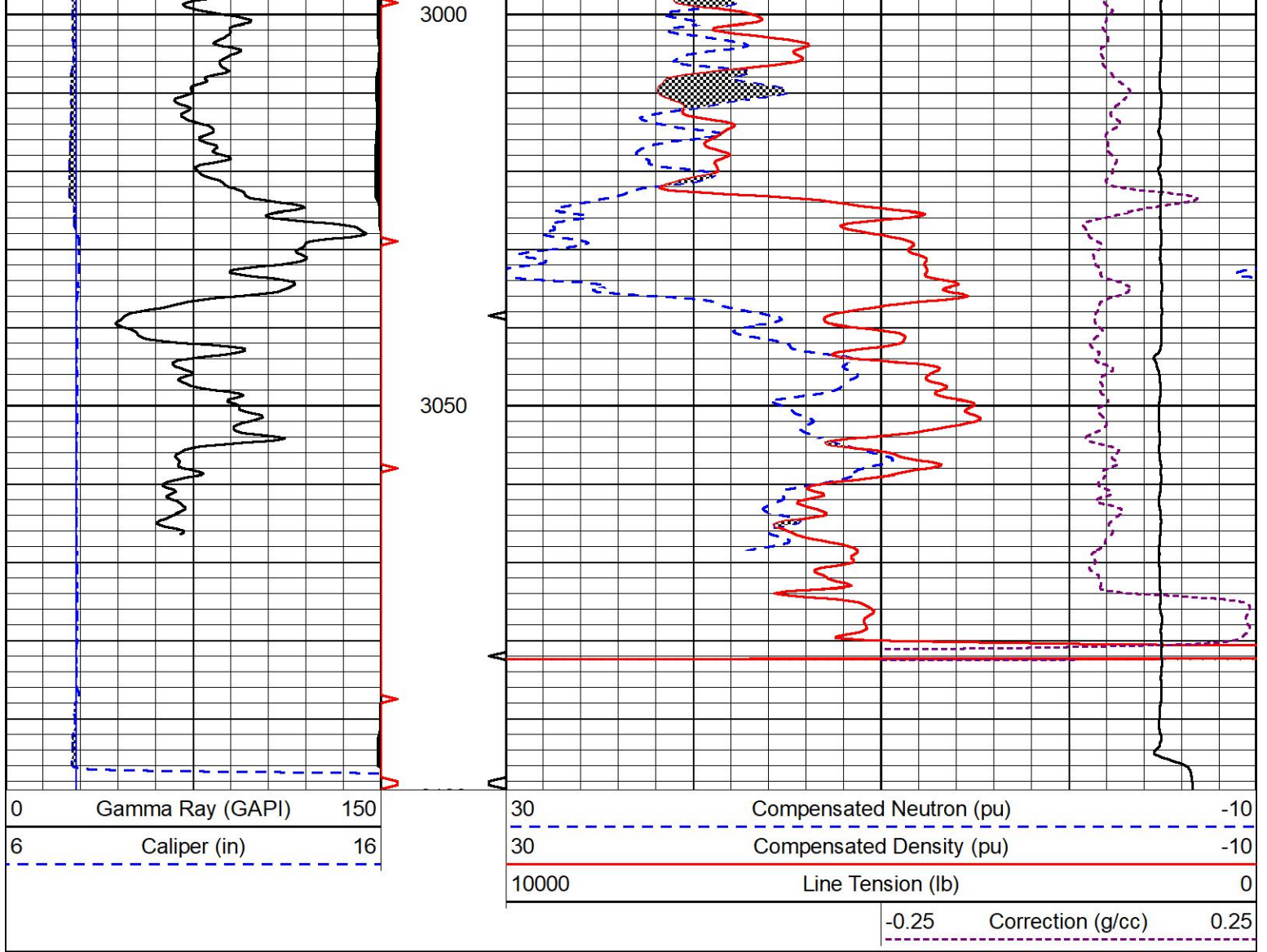








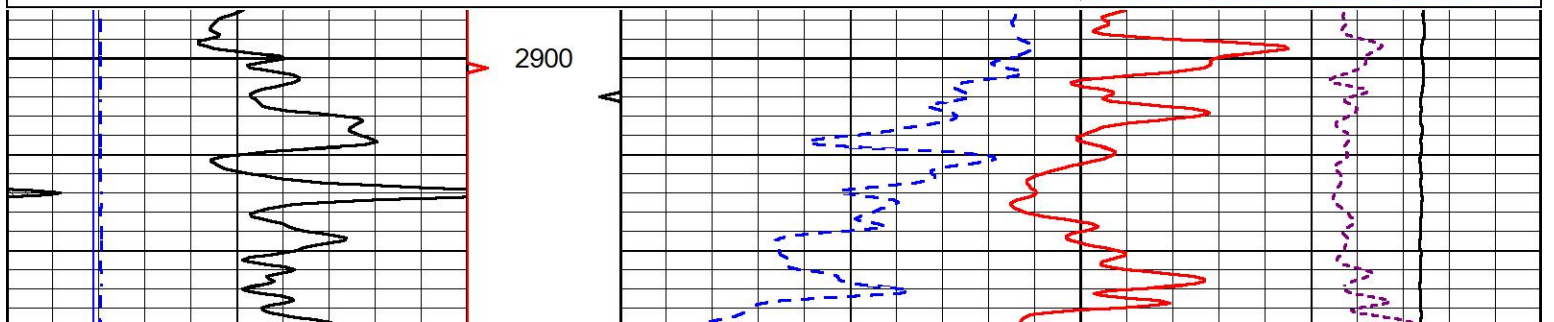
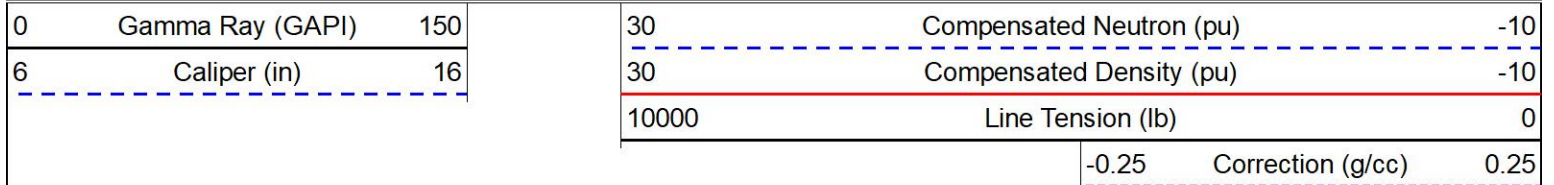


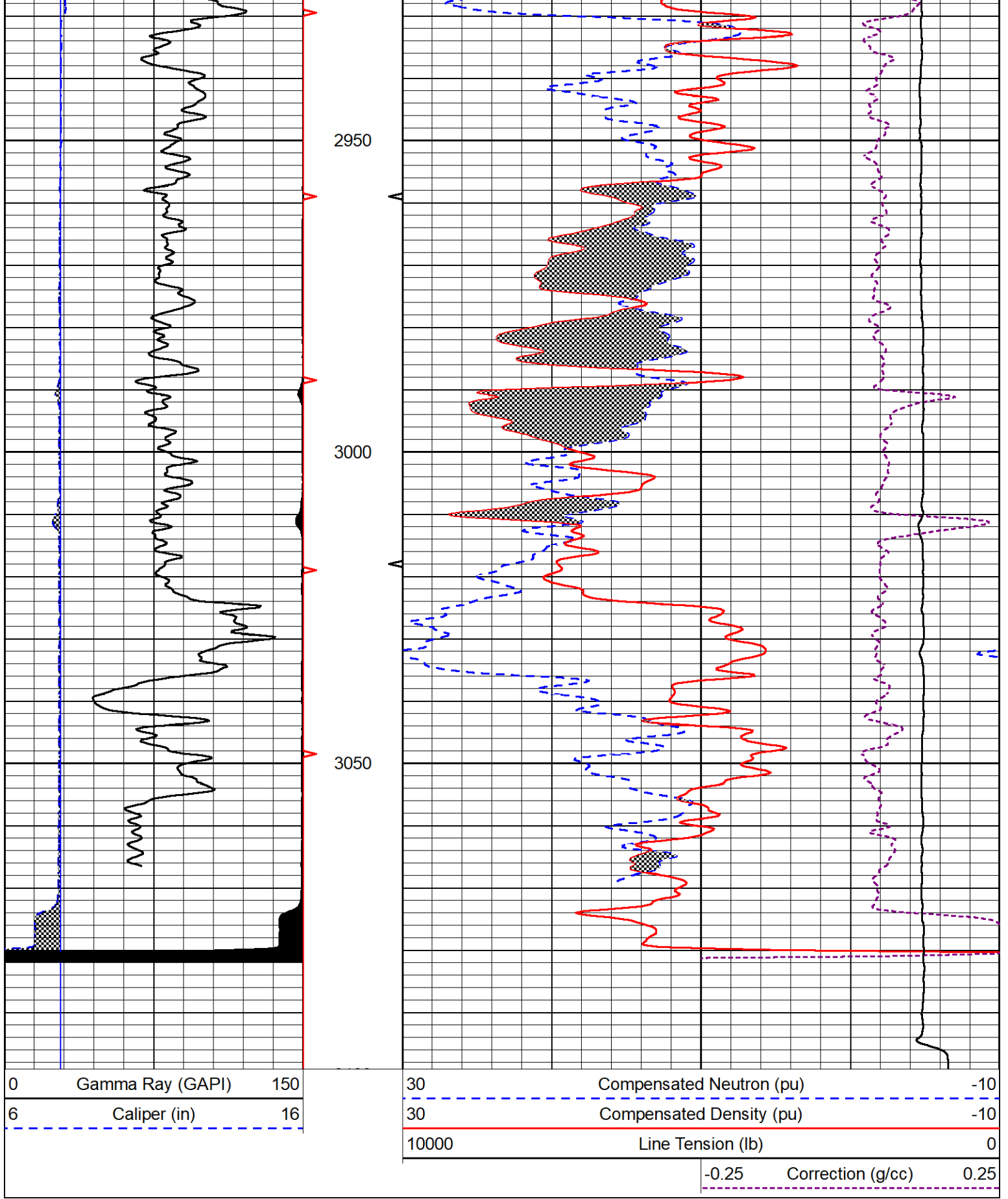


## REPEAT SECTION

### REPEAT PASS

Database File      iconic\_tarman #2.db  
 Dataset Pathname    Stack/pass2.1  
 Presentation Format    \_CNDLS~1  
 Dataset Creation    Mon Aug 15 19:29:12 2022  
 Charted by          Depth in Feet scaled 1:240





### Calibration Report

Database File      iconic\_tarman #2.db  
 Dataset Pathname   Stack/pass3.1  
 Dataset Creation    Mon Aug 15 19:57:11 2022

Serial-Model:  
Surface Cal Performed:

502 HT-M&W  
Sun Jul 24 22:38:00 2022

Loop:	Readings		References			Results	
	Air	Loop	Air	Loop		m	b
Deep	83.639	487.104	0.000	255.800	mmho/m	0.454	-32.000
Medium	113.335	1585.690	0.000	255.800	mmho/m	0.350	-7.000

Compensated Density Calibration Report

Serial-Model:  
Source #:  
Master Calibration Performed:

302-02-M&W  
20762B  
Wed Jun 22 01:19:51 2022

Master Calibration

	Density		Far Detector	Near Detector	
Magnesium	1.755	g/cc	4422.04	6163.44	cps
Aluminum	2.665	g/cc	835.14	3912.91	cps
Spine Angle = 74.75			Density/Spine Ratio = 0.527		
	Size		Reading		
Small Ring	8.00	in	0.53		
Large Ring	30.00	in	0.60		

Compensated Neutron Calibration Report

Serial Number:  
Tool Model:

207-MW  
M&W

CALIBRATION

Detector	Readings	Target	Normalization
Short Space	6240.00 cps	1000.00 cps	1.6025
Long Space	460.00 cps	1000.00 cps	1.9500

PRE-SURVEY VERIFICATION

Detector	Readings	Measured	Target
1) Short Space	cps		
Long Space	cps	pu	pu
2) Short Space	cps		
Long Space	cps	pu	
3) Short Space	cps		
Long Space	cps	pu	

POST-SURVEY VERIFICATION

Detector	Readings	Measured	Target
1) Short Space	cps		
Long Space	cps	pu	pu
2) Short Space	cps		

	Long Space	cps	pu	pu
3)	Short Space	cps		
	Long Space	cps	pu	pu

**Gamma Ray Calibration Report**

Serial Number:	106		
Tool Model:	M&W		
Performed:	Fri Dec 3 15:10:46 2021		
Calibrator Value:	500.0	GAPI	
Background Reading:	24.0	cps	
Calibrator Reading:	637.0	cps	
Sensitivity:	0.5500	GAPI/cps	

 <p><b>MIDWEST WIRELINE</b></p>	<b>Company</b>	Iconic Oil & Gas LLC
	<b>Well</b>	Tarman #2
	<b>Field</b>	Byerly
	<b>County</b>	Greeley
	<b>State</b>	Kansas