

MIDWEST SURVEYS
 LOGGING - PERFORATING - CONSULTING SERVICES
 P.O. Box 688, Osawatomie, KS 66064
 913 / 755 - 2128

GAMMA RAY / NEUTRON / CCL

File No.

Company **Bobcat Oilfield Services, Inc.**

Well **Stainbrook No. 32W-14**

Field **LaCygne - Cadmus**

County **Linn** State **Kansas**

Location **2970' FSL & 2640' FEL**

S/2-S/2-N/2

API # 15-107-25,002

Sec. 9	Twp. 20S	Rge. 23E	Elevation
Permanent Datum	GL	Elevation	NA
Log Measured From	GL	D.F.	NA
Drilling Measured From	GL	G.L.	NA

Date 09-25-2014

Run Number One

Depth Driller 351.0

Depth Logger 347.5

Bottom Logged Interval 346.5

Top Log Interval 20.0

Fluid Level Full

Type Fluid	Water
Density / Viscosity	NA
Salinity - PPM Cl	NA
Max Recorded Temp	NA
Estimated Cement Top	0.0
Equipment No.	102
Location	Osawatomie
Recorded By	Gary Windisch
Witnessed By	Bob Eberhart

BORE-HOLE RECORD				CASING RECORD			
Run	BIT	FROM	TO	SIZE	WGT.	FROM	TO
One	8.75"	0.0	20.0	6.00"	15.0 #	0.0	20.0
Two	5.625"	20.0	351.0	2.875"	6.5 #	0.0	348.0

<<< Fold Here >>>

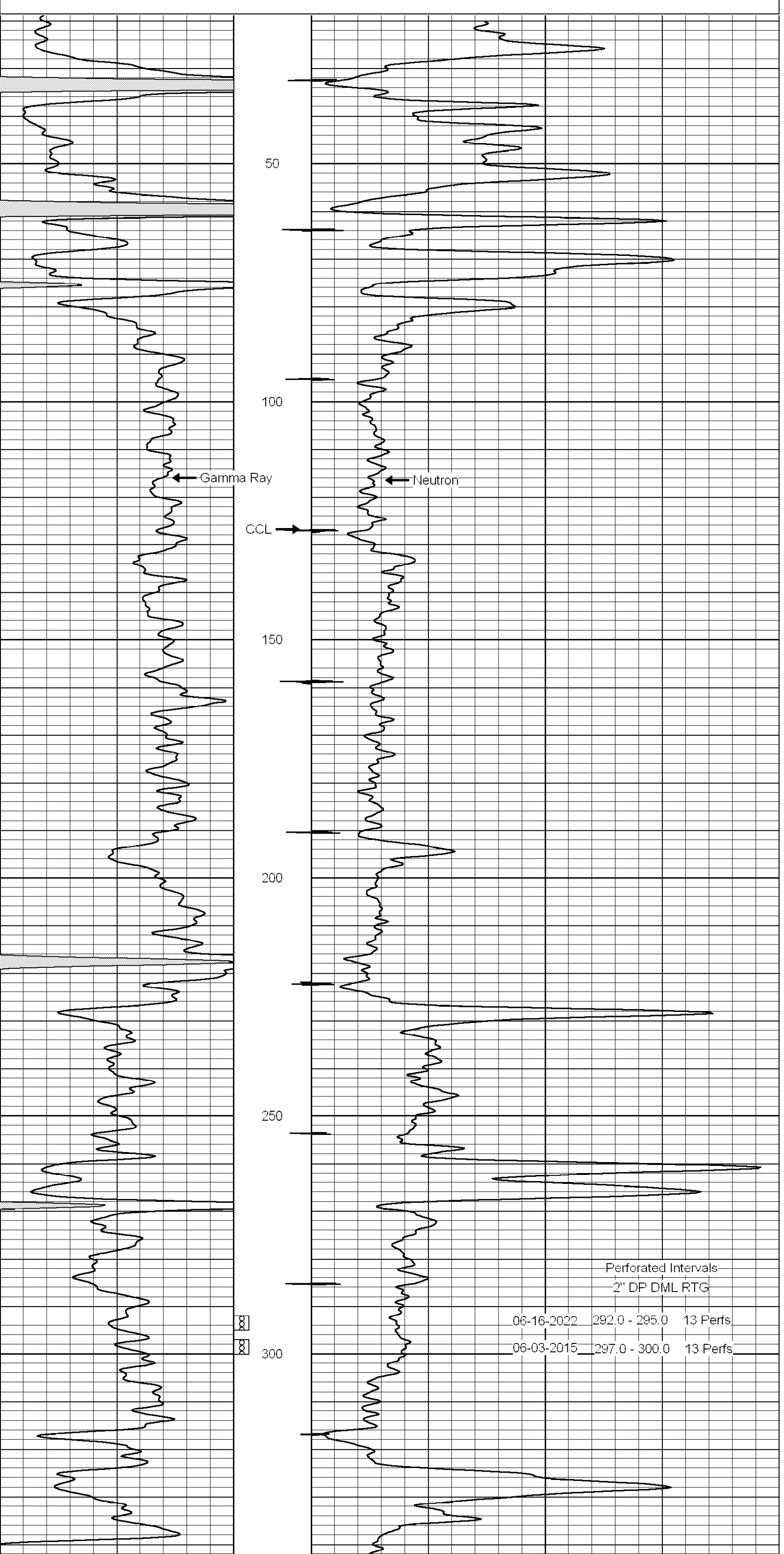
All interpretations are opinions based on inferences from electrical or other measurements and we cannot and do not guarantee the accuracy or correctness of any interpretation, and we shall not, except in the case of gross or willful negligence on our part, be liable or responsible for any loss, costs, damages, or expenses incurred or sustained by anyone resulting from any interpretation made by any of our officers, agents or employees. These interpretations are also subject to our general terms and conditions set out in our current Price Schedule.

Comments

Drilling Contractor :
 Dale Jackson Production Company

Database File: stainbrook32w-14.db
 Dataset Pathname: pass1
 Presentation Format: gr-n-ccl
 Dataset Creation: Mon Aug 25 15:07:35 2014 by Log SCH 111116
 Charted by: Depth in Feet scaled 1:240

0	Gamma Ray (cps)	150	-1 CCL 1	100	Neutron (cps)	1900
150	Gamma Ray (cps)	300				



0	Gamma Ray (cps)	150	-1 CCL 1	100	Neutron (cps)	1900
150	Gamma Ray (cps)	300				