



FRAC FINDER LOG

Company	DEUTSCH OIL CO.	Company	DEUTSCH OIL CO.
Well	HETRICK-HOWELL#1-24	Well	HETRICK-HOWELL#1-24
Field	LELA	Field	LELA
County	PRATT	County	PRATT
State	KANSAS	State	KANSAS
Location:	API # : 15-151-22536-0000 1980' FSL & 2970' FEL	Other Services CDL/CNL ML/DIL	
Permanent Datum	SEC 24 TWP 26S RGE 12W	Elevation	
Log Measured From	GROUND LEVEL Elevation 1861	K.B. 1874	
Drilling Measured From	KELLY BUSHING 13' A.G.L. KELLY BUSHING	D.F. 1872	
		G.L. 1861	
Date	08/15/21		
Run Number	TWO		
Depth Driller	4180		
Depth Logger	4179		
Bottom Logged Interval	4170		
Top Log Interval	3800		
Casing Driller	8 5/8" @ 277		
Casing Logger	277		
Bit Size	7 7/8"		
Type Fluid in Hole	CHEMICAL MUD		
Density / Viscosity	9.3/64		
pH / Fluid Loss	11.0/8.8		
Source of Sample	FLOWLINE		
Rm @ Meas. Temp	.5@ 70F		
Rmf @ Meas. Temp	.38@ 70F		
Rmc @ Meas. Temp	.60 @ 70F		
Source of Rmf / Rmc	MEASURED		
Rm @ BHT	.29@ 117F		
Time Circulation Stopped	2 HOURS		
Time Logger on Bottom	////		
Maximum Recorded Temperature	117F		
Equipment Number	1523		
Location	HAYS, KANSAS		
Recorded By	GUS PFANENSTIEL		
Witnessed By	AARON YOUNG		

<<< Fold Here >>>

All interpretations are opinions based on inferences from electrical or other measurements and we cannot and do not guarantee the accuracy or correctness of any interpretation, and we shall not, except in the case of gross or willful negligence on our part, be liable or responsible for any loss, costs, damages, or expenses incurred or sustained by anyone resulting from any interpretation made by any of our officers, agents or employees. These interpretations are also subject to our general terms and conditions set out in our current Price Schedule.

Comments

THANK YOU FOR USING ELI WIRELINE, HAYS, KS. (785) 628-6395

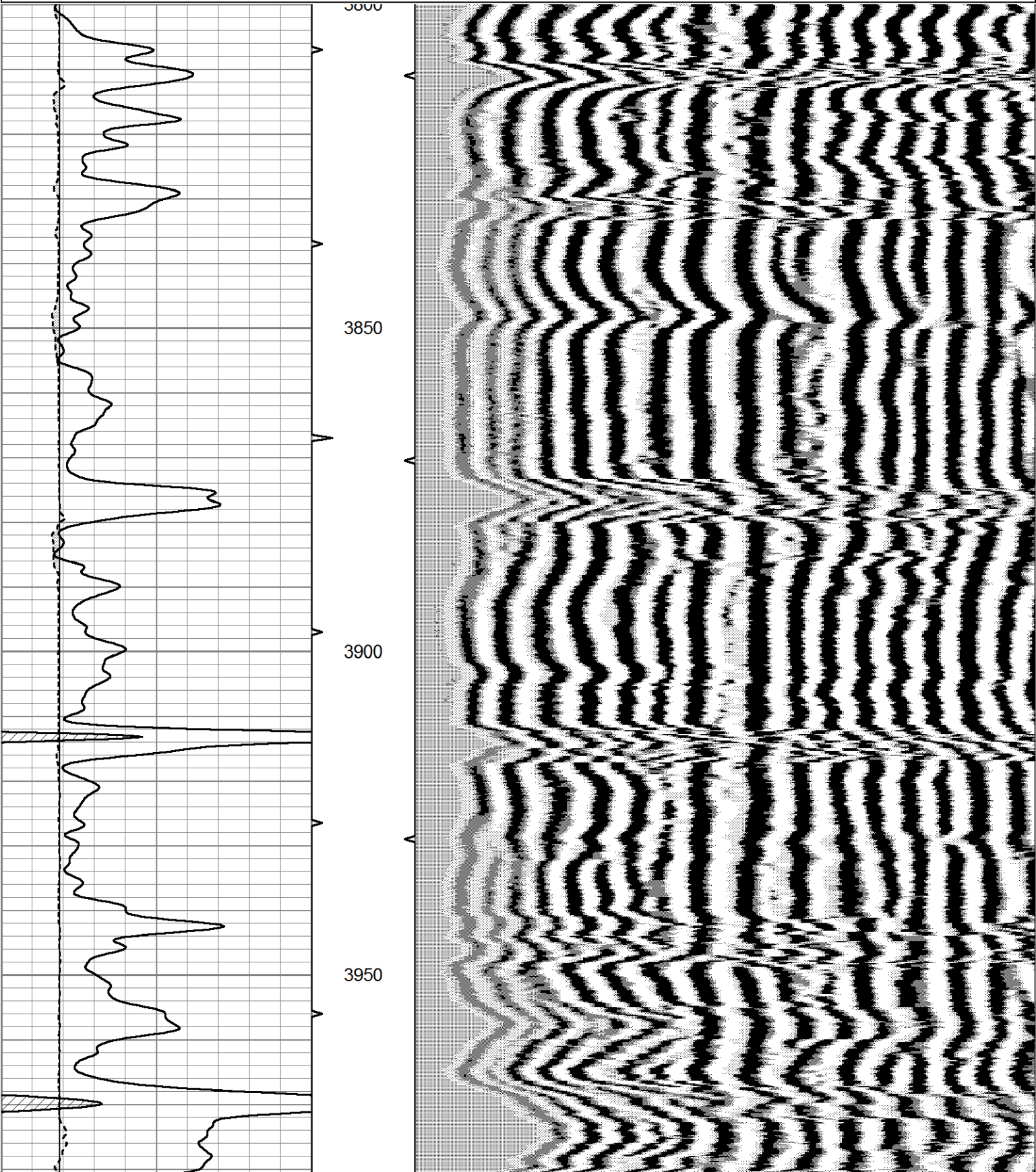
DIRECTIONS:PRESTON WEST 2 MILES ON NE 80 TH, NORTH 1/4
EAST INTO.

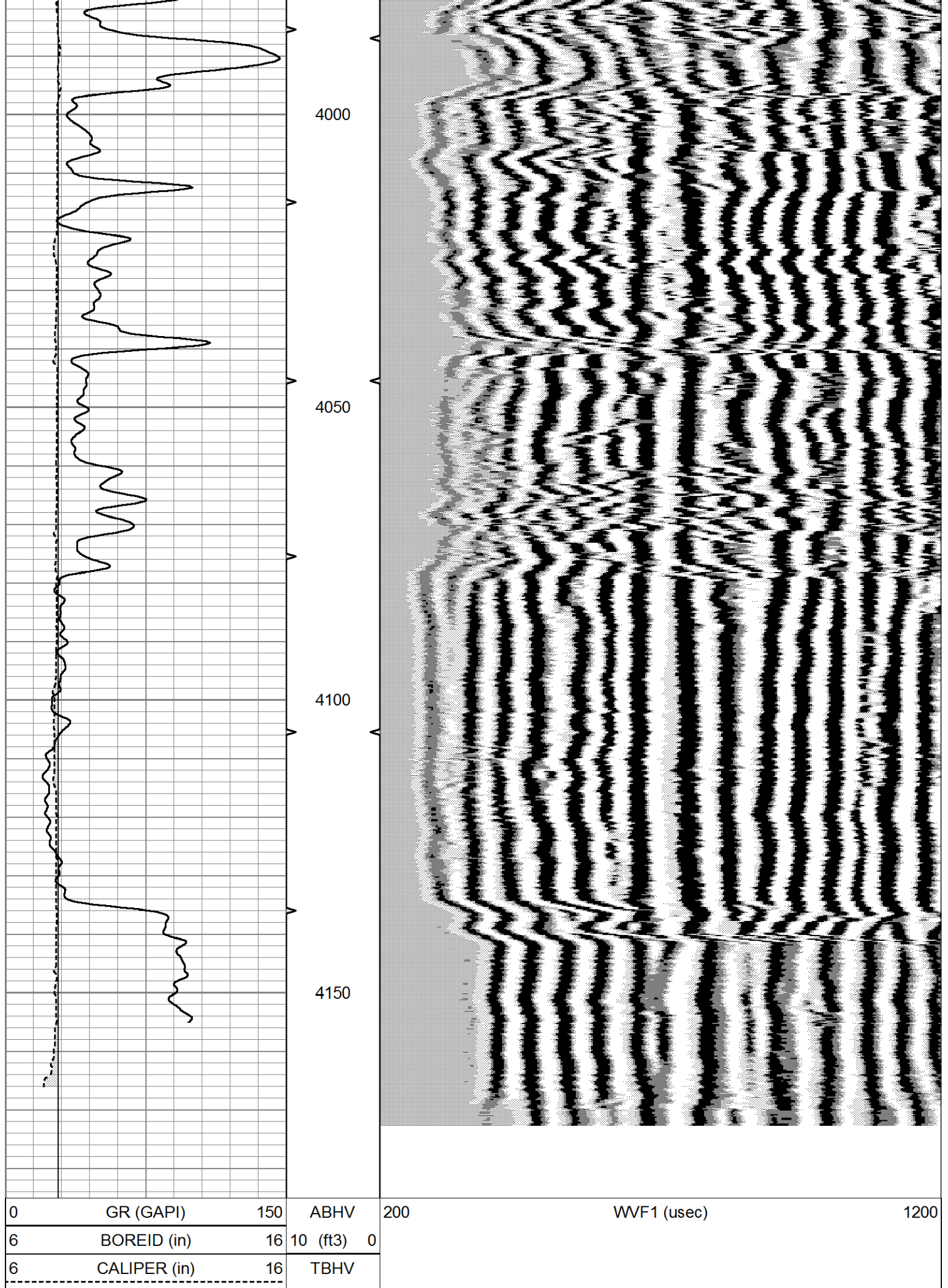


MAIN PASS

Database File	5615pe.db
Dataset Pathname	pass7.1
Presentation Format	frac
Dataset Creation	Sun Aug 15 16:45:11 2021
Charted by	Depth in Feet scaled 1:240

0	GR (GAPI)	150	ABHV	200	WVF1 (usec)	1200
6	BOREID (in)	16	10 (ft3)	0		
6	CALIPER (in)	16	TBHV			
			0 (ft3)	10		





0 (ft3) 10
