



MIDWEST WIRELINE

DUAL COMP POROSITY LOG

Company Pioneer Oil Company, Inc.
 Well Schamberger Sheep Head Unit #1-7
 Field
 County Sheridan
 State Kansas

Company Pioneer Oil Company, Inc.
 Well Schamberger Sheep Head Unit #1-7
 Field
 County Sheridan State Kansas

Location: API #: 15-179-21478-00-00
 NE SE SE NE
 2207 FNL & 109 FEL
 SEC 7 TWP 9S RGE 28W
 Permanent Datum Ground Level Elevation 2800
 Log Measured From Kelly Bushing
 Drilling Measured From Kelly Bushing
 Other Services
 DIL
 MEL/BHCS
 K.B. 2808
 D.F.
 G.L. 2800

Date	4/9/2022						
Run Number	One						
Type Log	CNL/CDL						
Depth Driller	4245						
Depth Logger	4249						
Bottom Logged Interval	4228						
Top Logged Interval	3200						
Type Fluid In Hole	Chemical						
Salinity, PPM CL	3400						
Density	9.5						
Level	Full						
Max. Rec. Temp. F	118						
Operating Rig Time	4.5 Hours						
Equipment -- Location	P-24 Hays						
Recorded By	T. Martin						
Witnessed By	Jim Musgrove						
Borehole Record							
Run No.	Bit	From	To	Size	Wgt.	From	To
One	12.25	00	271	8.625	23	00	271
Two	7.875	271	TD				
Casing Record							

<<< Fold Here >>>

All interpretations are opinions based on inferences from electrical or other measurements and Midwest Wireline Services, LLC cannot and does not guarantee the accuracy or correctness of any interpretation, and Midwest Wireline Services, LLC will not be liable or responsible for any loss, costs, damages, or expenses incurred or sustained by anyone resulting from any interpretation made by any of our officers, agents or employees.

Comments

N/A DENOTES NOT AVAILABLE OR NON-APPLICABLE.

Hoxie, KS, 3.5 S to Rd 45 S,
 2 W to Rd 20 W, 1 S, W into

Log Measured From: Kelly Bushing 8 Ft. Above Permanent Datum

THANK YOU FOR USING MIDWEST WIRELINE LLC
 785-625-3858

Your Midwest Wireline Crew		This Log Record Was Witnessed By	
Engineer: T. Martin	Operator:	Primary Witness: Jim Musgrove	Secondary Witness:
Operator:	Operator:	Secondary Witness:	Secondary Witness:
Operator:		Secondary Witness:	

Sensor	Offset (ft)	Schematic	Description	Length (ft)	O.D. (in)	Weight (lb)
GR	32.75		GR-M&W (101)	3.00	3.50	50.00
CNLSC CNSSC	29.65 28.90		CNT-M&W (207-MW)	5.00	3.50	100.00
LSD DCAL SSD	20.60 20.58 20.10		CDL-M&W (301-01)	8.50	4.00	250.00
RLL3F RLL3	15.50 15.50		DIL-M&W (502 HT)	18.25	3.50	220.00
CILD	8.33		CILM	4.50		
SP	0.20					

Dataset: pioneer_schamberger sheep head unit #1-7.db: field/well/Stack/pass3.1
 Total length: 34.75 ft
 Total weight: 620.00 lb
 O.D.: 4.00 in

Log Variables

DatabaseC:\ProgramData\Warrior\Data\pioneer_schamberger sheep head unit #1-7.db
 Dataset field/well/Stack/pass3.1/_vars_

Top - Bottom

A	BOREID in	BOTTEMP degF	CASEOD in	CASETHCK in	FLUIDDEN g/cc	M	MATRXDEN g/cc
1	7.875	118	5.5	0	1	2	2.71
NPORSEL	PERFS	SNDERR mmho/m	SNDERRM mmho/m	SPSHIFT mV	SRFTEMP degF	SZCOR	TDEPTH ft
Limestone	0	0	0	-240	50	Off	4249

Variable Description

A : Cement Factor (a)
 BOREID : Borehole I.D.
 BOTTEMP : Bottom Hole Temperature
 CASEOD : Casing O.D.
 CASETHCK : Casing Thickness
 FLUIDDEN : Fluid Density
 M : Cement Exp (m)
 MATRXDEN : Matrix Density

NPORSEL : Neutron Porosity Curve Select
 PERFS : Perforation Flag
 SNDERR : Deep Sonde Error Correction
 SNDERRM : Medium Sonde Error Correction
 SPSHIFT : S.P. Baseline Offset
 SRFTEMP : Surface Temperature
 SZCOR : CN Size Cor. ?
 TDEPTH : Total Depth

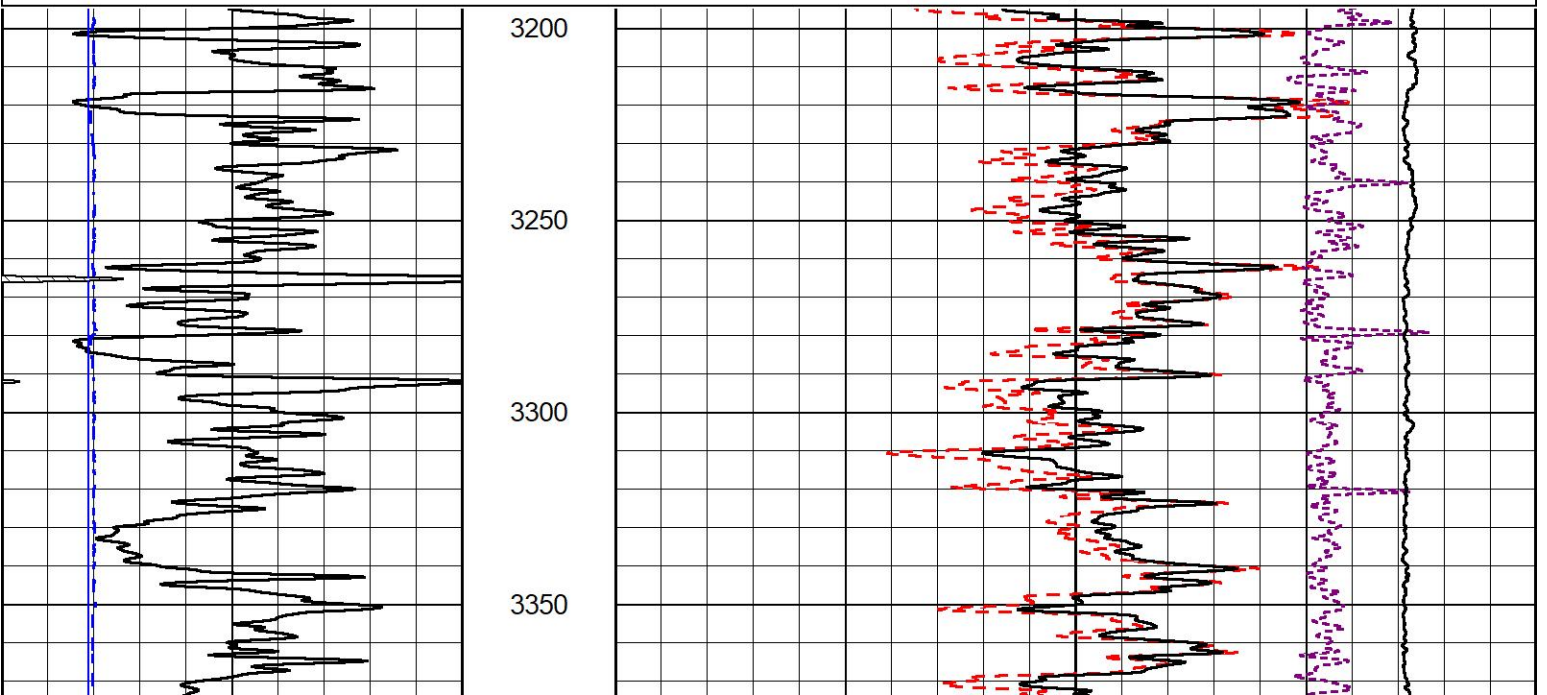


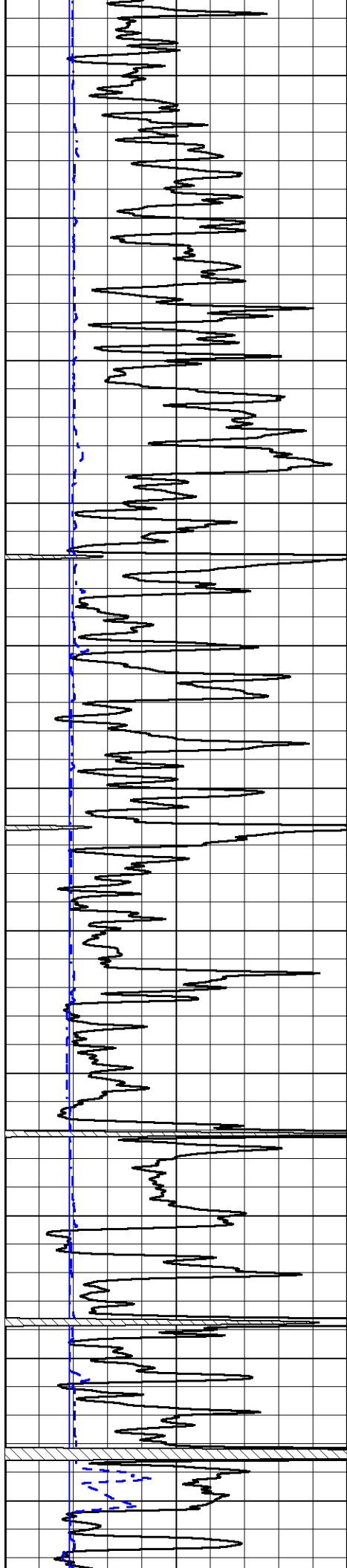
2" SCALE BULK DENSITY

MAIN PASS

Database File pioneer_schamberger sheep head unit #1-7.db
 Dataset Pathname Stack/pass3.3
 Presentation Format _cdl
 Dataset Creation Sat Apr 09 02:20:39 2022
 Charted by Depth in Feet scaled 1:600

0	Gamma Ray (GAPI)	150	30	Compensated Density (pu)	-10
6	Caliper (in)	16	2	Bulk Density (g/cc)	3
			10000	Line Tension (lb)	0
				-0.25 Correction (g/cc)	0.25





3400

3450

3500

3550

3600

3650

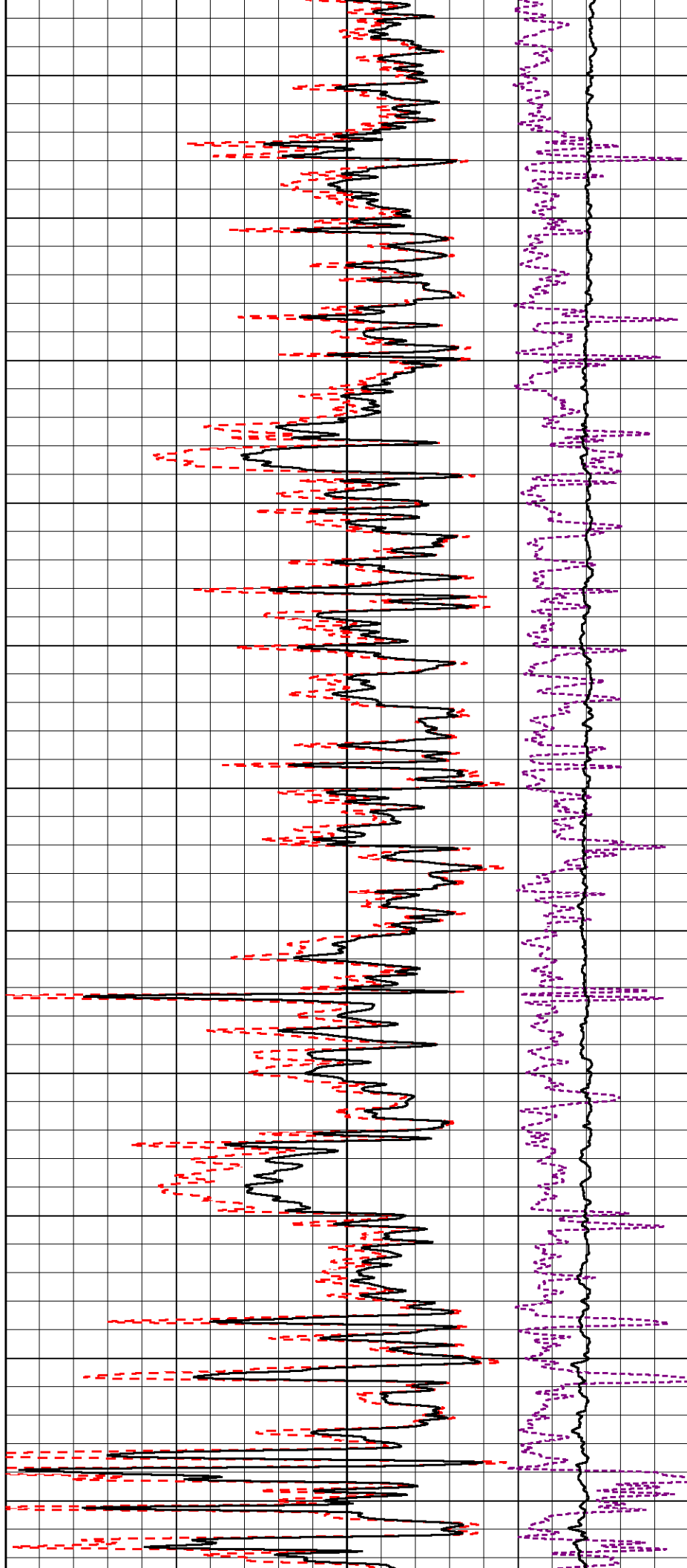
3700

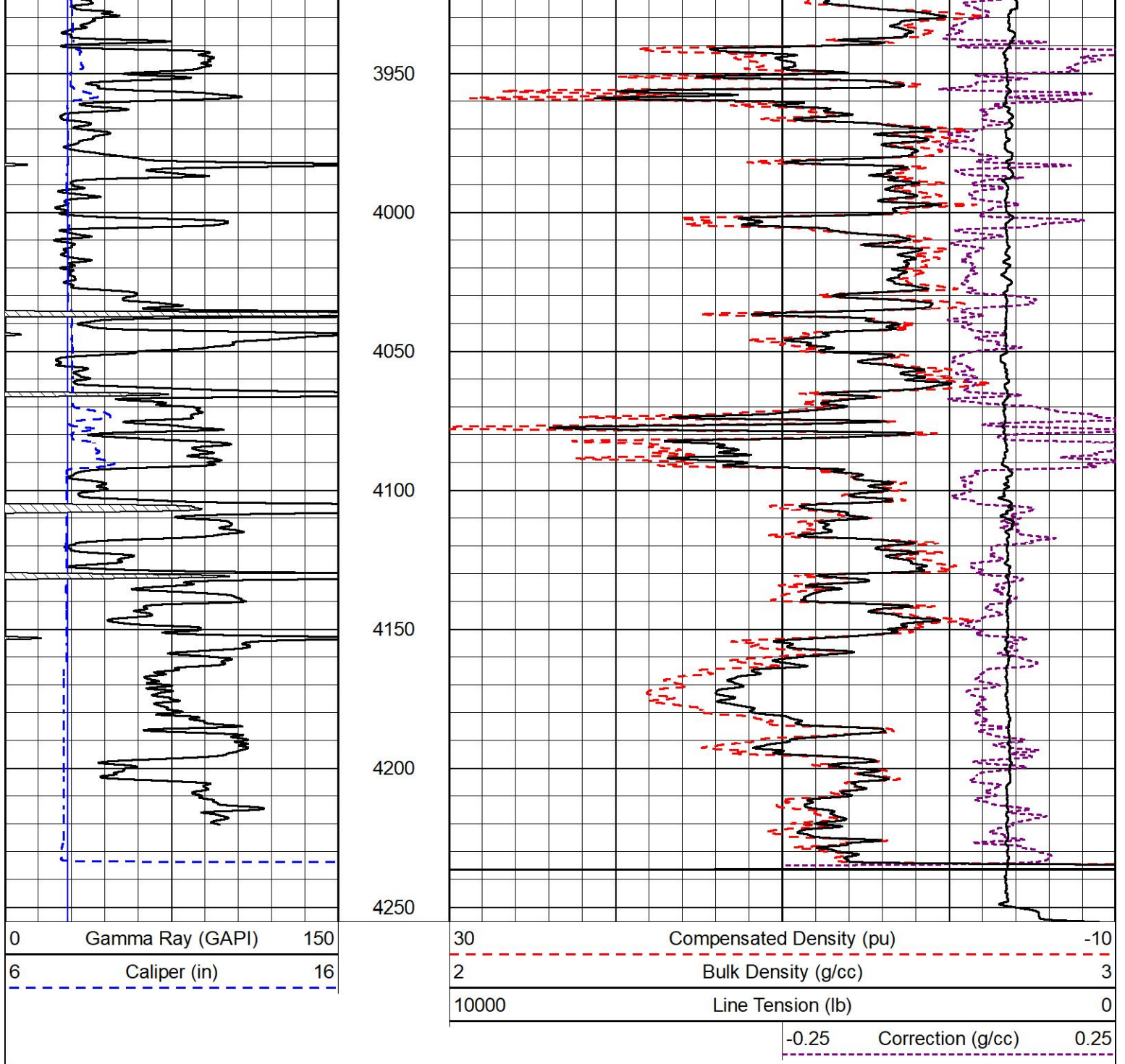
3750

3800

3850

3900

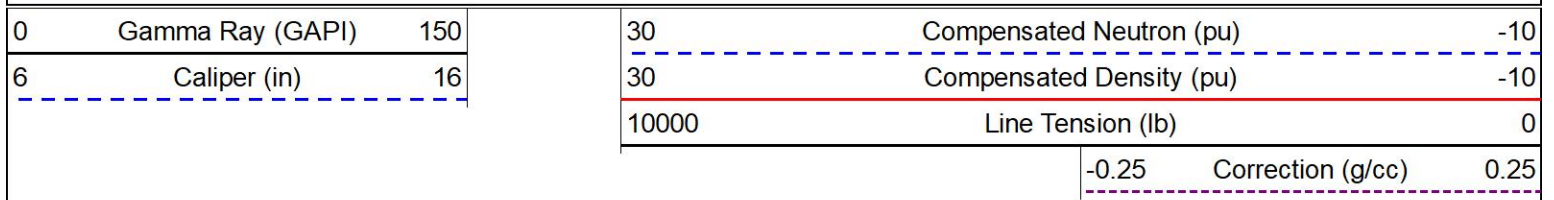


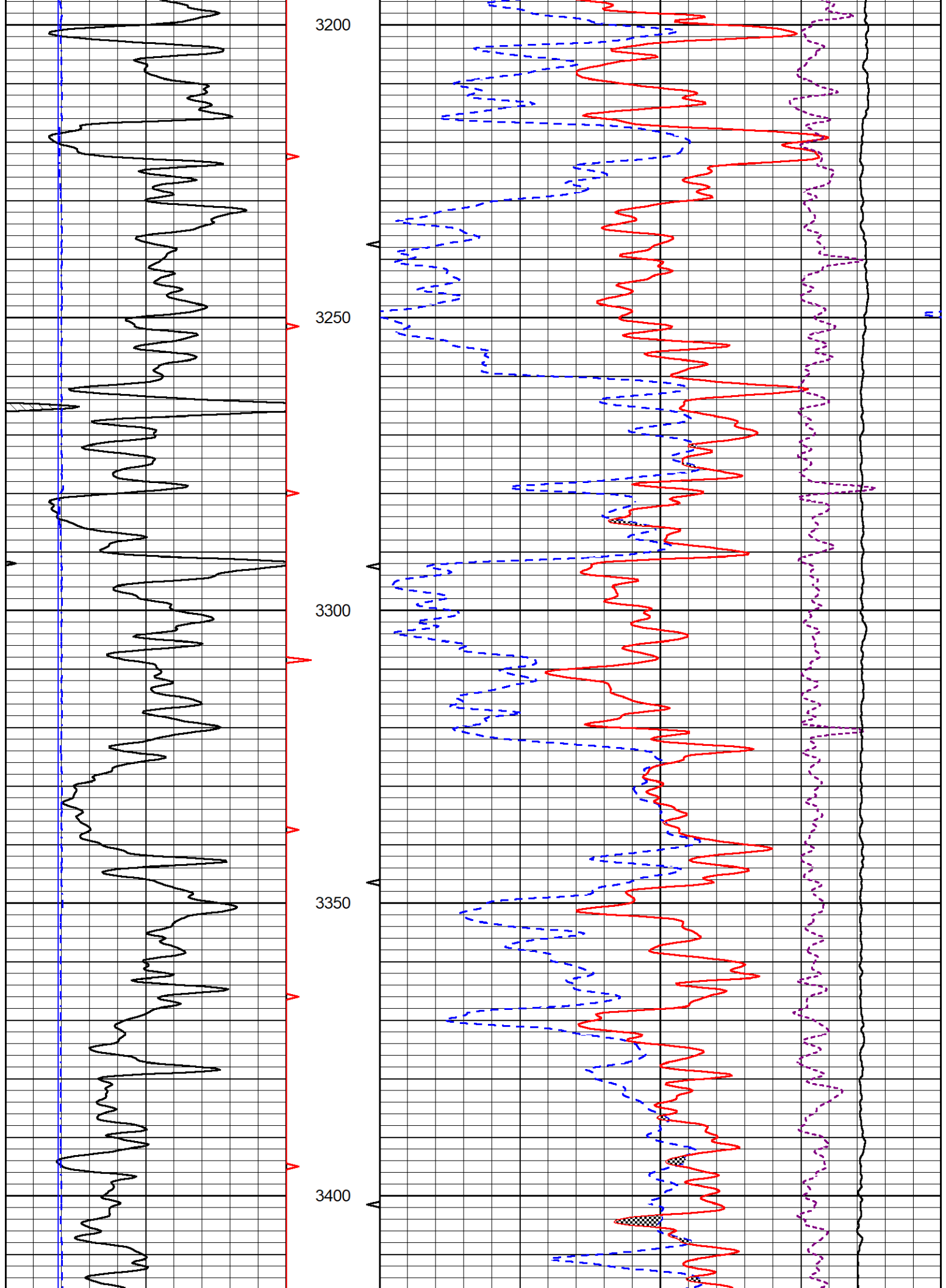


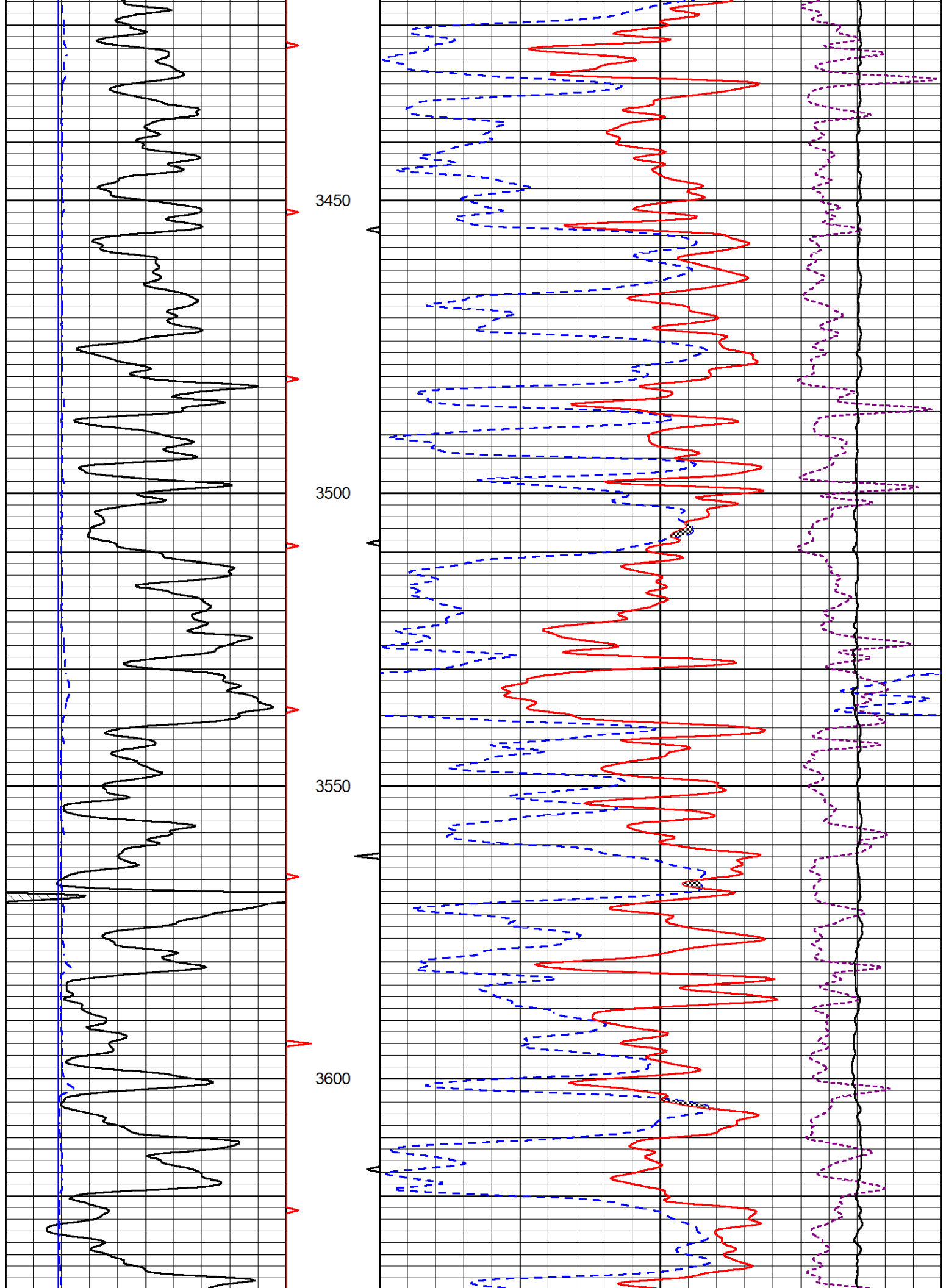
DETAIL SECTION

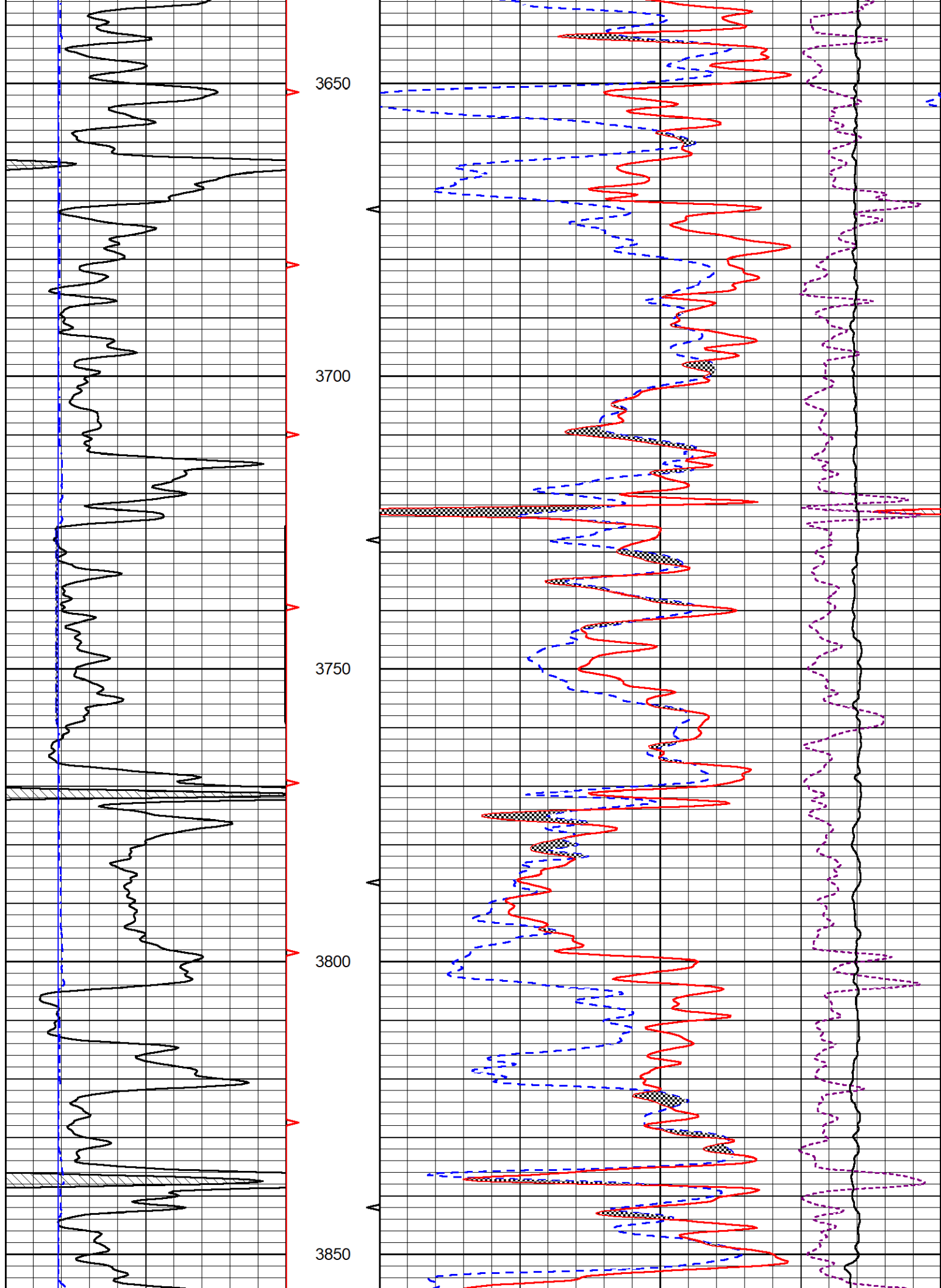
MAIN PASS

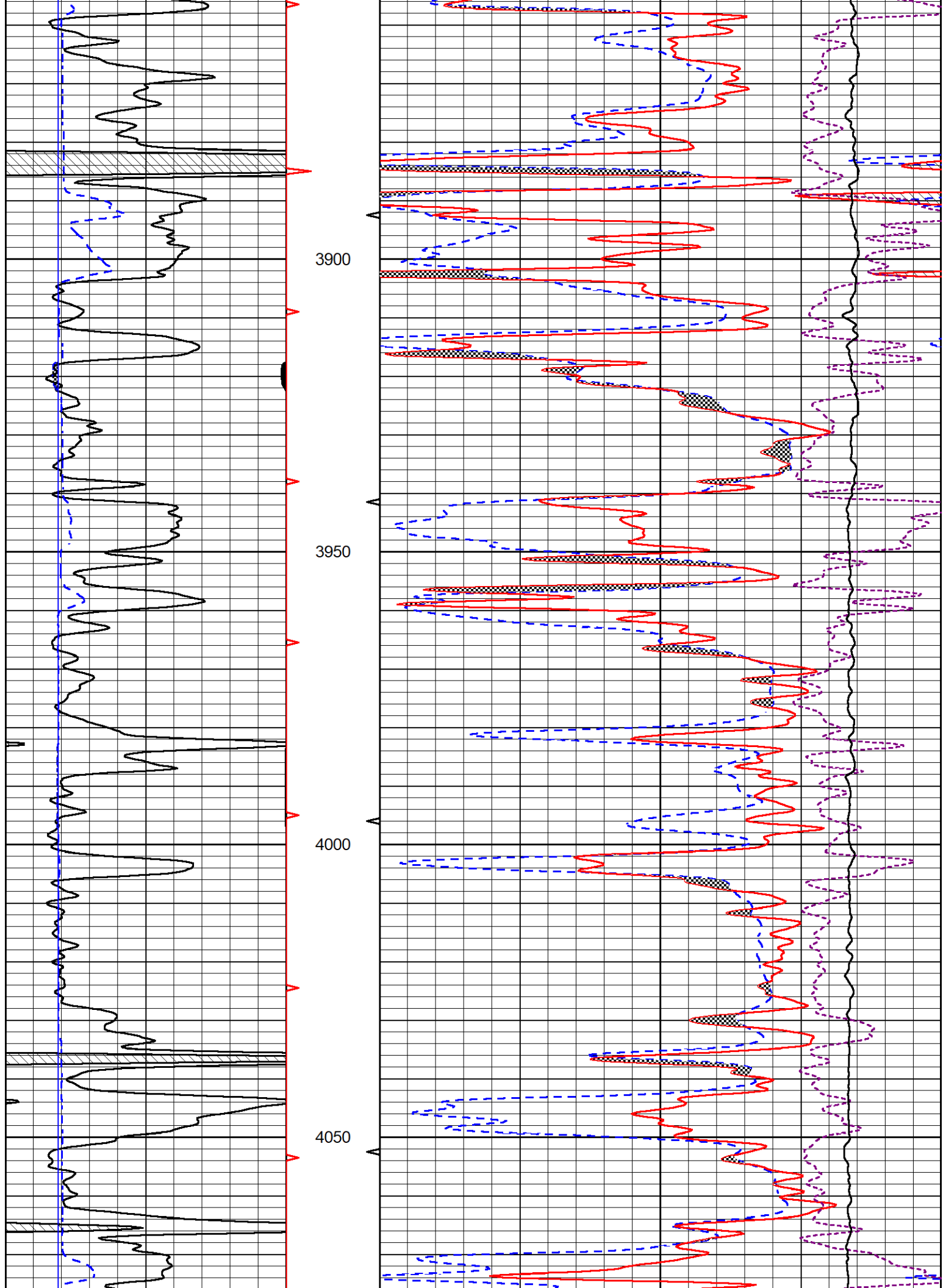
Database File pioneer_schamberger sheep head unit #1-7.db
 Dataset Pathname Stack/pass3.1
 Presentation Format _CNDLS~1
 Dataset Creation Sat Apr 09 02:58:47 2022
 Charted by Depth in Feet scaled 1:240

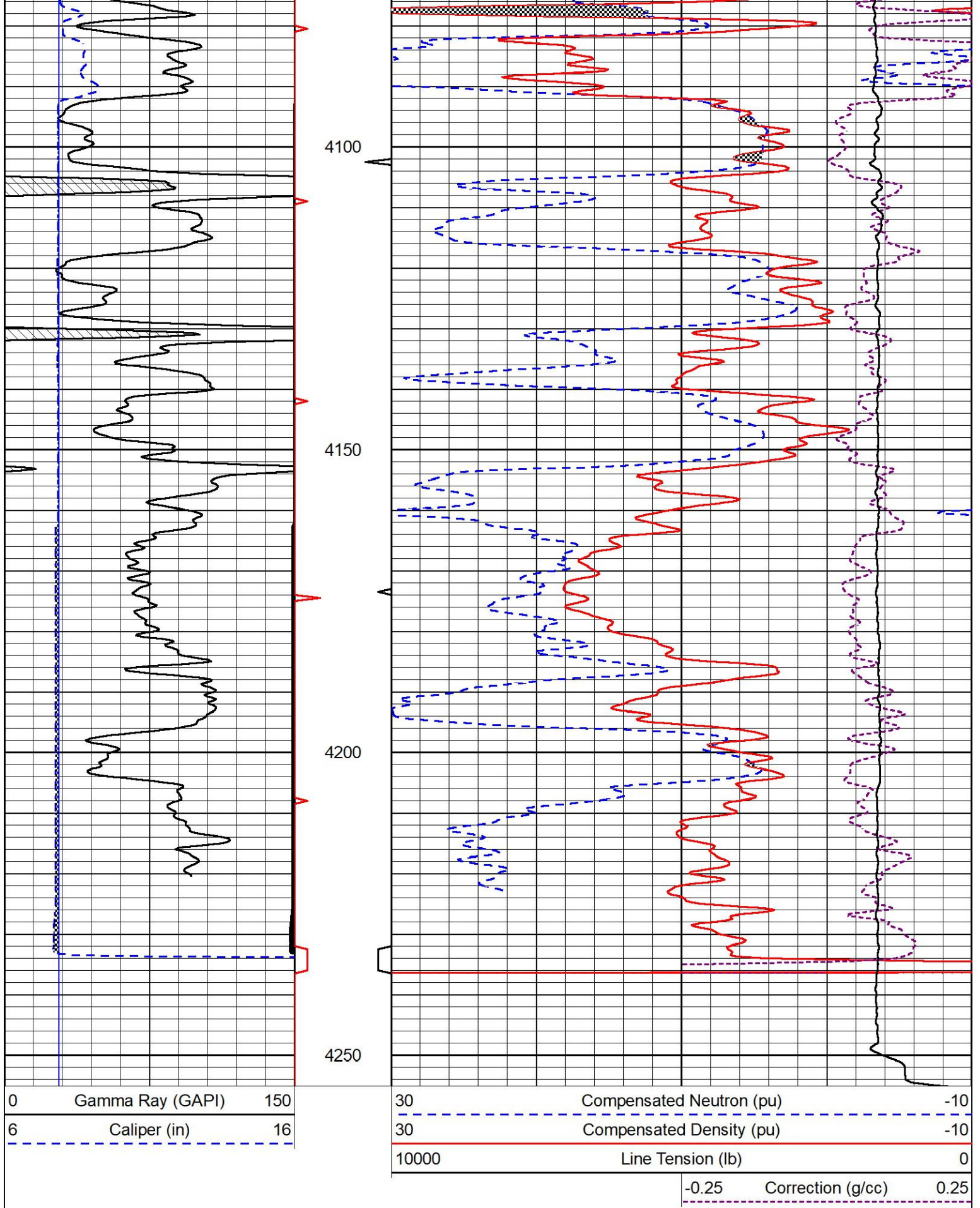












REPEAT SECTION

REPEAT PASS

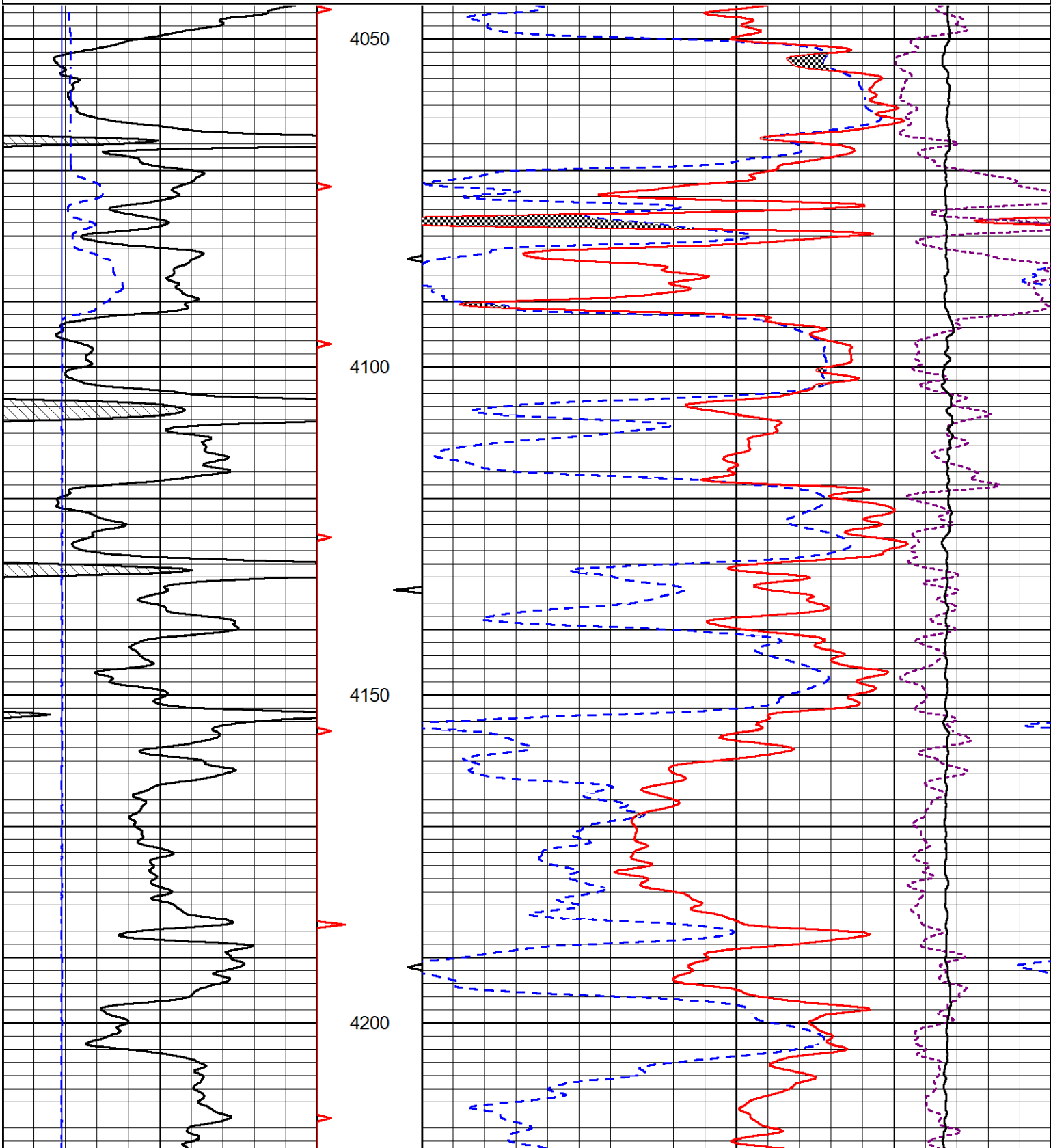


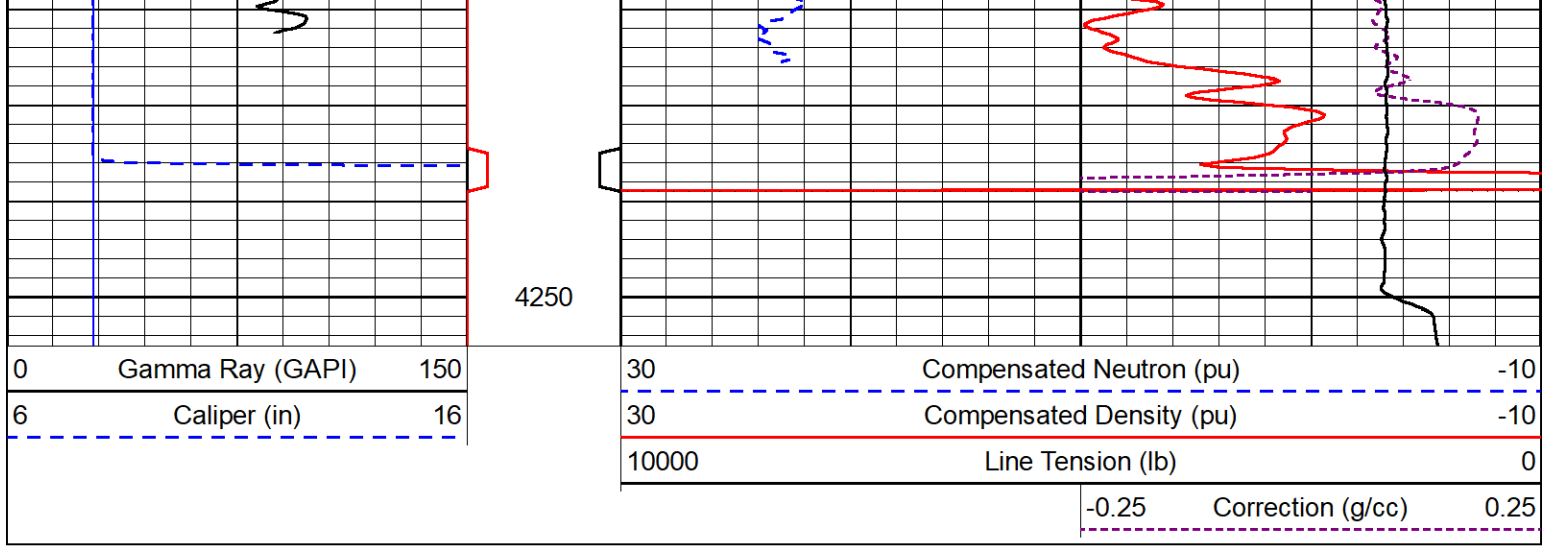
Database File pioneer_schamberger sheep head unit #1-7.db
 Dataset Pathname Stack/pass2.1
 Presentation Format _CNDLS~1
 Dataset Creation Sat Apr 09 02:16:18 2022
 Charted by Depth in Feet scaled 1:240

0	Gamma Ray (GAPI)	150
6	Caliper (in)	16

30	Compensated Neutron (pu)	-10
30	Compensated Density (pu)	-10
10000	Line Tension (lb)	0

-0.25	Correction (g/cc)	0.25
-------	-------------------	------





Calibration Report

Database File: pioneer_schamberger sheep head unit #1-7.db
 Dataset Pathname: Stack/pass3.1
 Dataset Creation: Sat Apr 09 02:58:47 2022

Dual Induction Calibration Report

Serial-Model: 502 HT-M&W
 Surface Cal Performed: Wed Feb 9 17:39:00 2022

Loop:	Readings		References			Results	
	Air	Loop	Air	Loop		m	b
Deep	83.639	487.104	0.000	183.000	mmho/m	0.454	-34.000
Medium	113.335	1585.690	0.000	442.000	mmho/m	0.350	-10.000

Compensated Density Calibration Report

Serial-Model: 301-01-M&W
 Source #: 20762B
 Master Calibration Performed: Thu Feb 3 00:43:14 2022

Master Calibration

	Density		Far Detector	Near Detector	
Magnesium	1.755	g/cc	3559.05	2566.81	cps
Aluminum	2.675	g/cc	664.63	1636.12	cps
Spine Angle = 74.98			Density/Spine Ratio = 0.530		
	Size		Reading		
Small Ring	8.00	in	1.16		
Large Ring	13.00	in	1.02		

Compensated Neutron Calibration Report

Serial-Model: 207-MW-M&W
 Source #: 100046B
 Master Calibration Performed: Mon Nov 29 15:06:24 2021

Master Calibration

Detector	Readings	Target	Normalization
Short Space	6240.00 cps	1000.00 cps	1.6025
Long Space	460.00 cps	1000.00 cps	1.9500

Gamma Ray Calibration Report

Serial Number:	101	
Tool Model:	M&W	
Performed:	Mon Jan 24 19:14:46 2022	
Calibrator Value:	500.0	GAPI
Background Reading:	24.0	cps
Calibrator Reading:	637.0	cps
Sensitivity:	0.5500	GAPI/cps



Company	Pioneer Oil Company, Inc.
Well	Schamberger Sheep Head Unit #1-7
Field	
County	Sheridan
State	Kansas