

MICRO
LOG



Company BLACKHAWK PRODUCTION, CO.
Well SANDERS #11
Field TOULON
County ELLIS State KANSAS

Location: 1170' FNL & 330' FWL
API #: 15-051-27011-0000
Permanent Datum GROUND LEVEL Elevation 2010
Log Measured From KELLY BUSHING 8' A.G.L.
Drilling Measured From KELLY BUSHING
Elevation
K.B. 2018
D.F. 2016
G.L. 2010

Date	8/26/21
Run Number	TWO
Depth Driller	3630
Depth Logger	3631
Bottom Logged Interval	3629
Top Log Interval	2850
Casing Driller	8 5/8" @ 1225
Casing Logger	1225
Bit Size	7 7/8"
Type Fluid in Hole	CHEMICAL MUD
Density / Viscosity	9.0/56
pH / Fluid Loss	10.4/8.6
Source of Sample	FLOWLINE
Rm @ Meas. Temp	.5@ 70F
Rmf @ Meas. Temp	.38@ 70F
Rmc @ Meas. Temp	.60 @ 70F
Source of Rmf / Rmc	MEASURED
Rm @ BHT	.30@ 113F
Time Circulation Stopped	2 HOURS
Time Logger on Bottom	////
Maximum Recorded Temperature	113F
Equipment Number	1523
Location	HAYS, KANSAS
Recorded By	GUS PFANENSTIEL
Witnessed By	JASON T ALM

<<< Fold Here >>>

All interpretations are opinions based on inferences from electrical or other measurements and we cannot and do not guarantee the accuracy or correctness of any interpretation, and we shall not, except in the case of gross or willful negligence on our part, be liable or responsible for any loss, costs, damages, or expenses incurred or sustained by anyone resulting from any interpretation made by any of our officers, agents or employees. These interpretations are also subject to our general terms and conditions set out in our current Price Schedule.

Comments

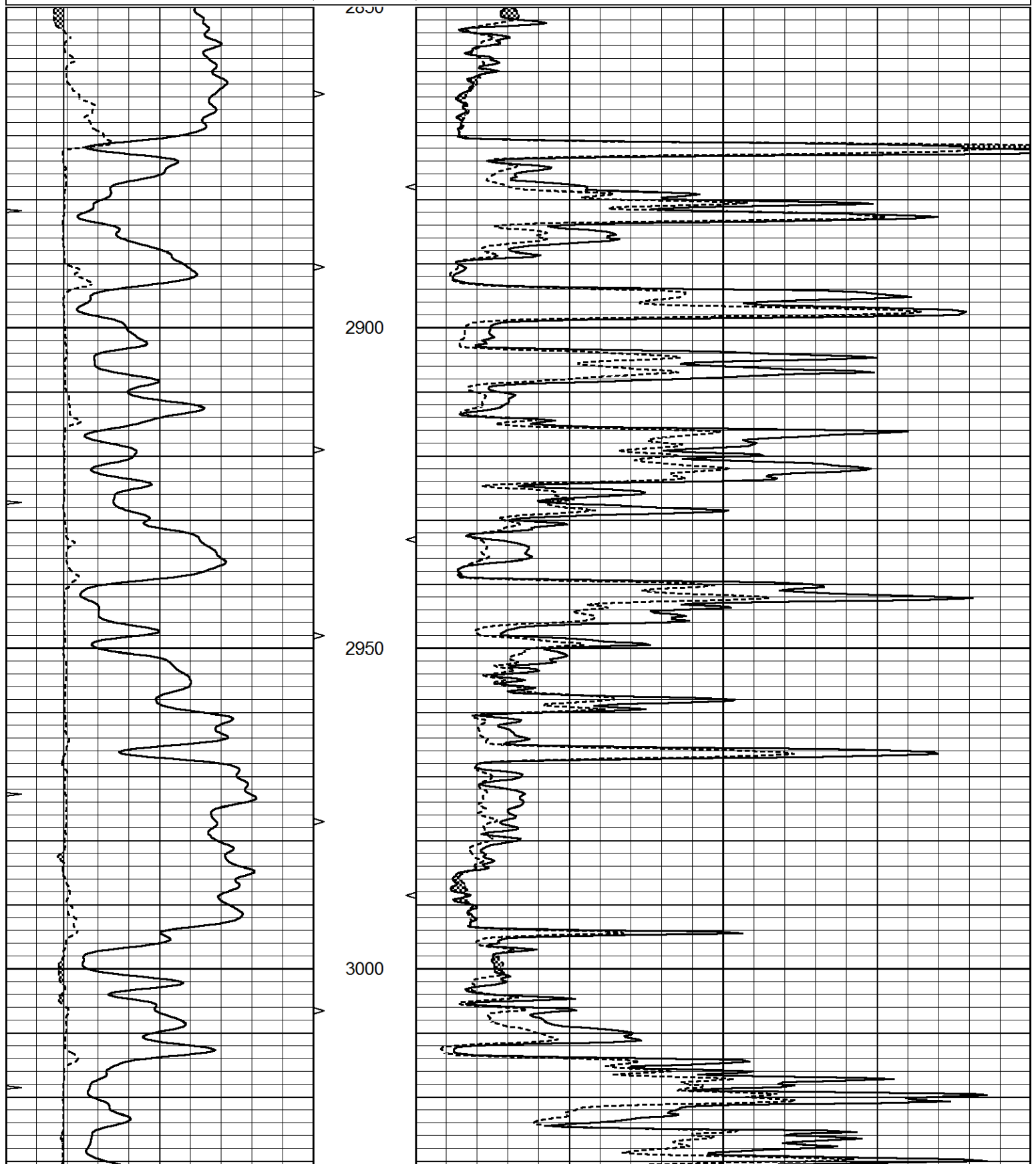
THANK YOU FOR USING ELI WIRELINE, HAYS, KS. (785) 628-6395
DIRECTIONS: TOULON EAST 2 MILES, NORTH 3/4 MILE, EAST INTO.

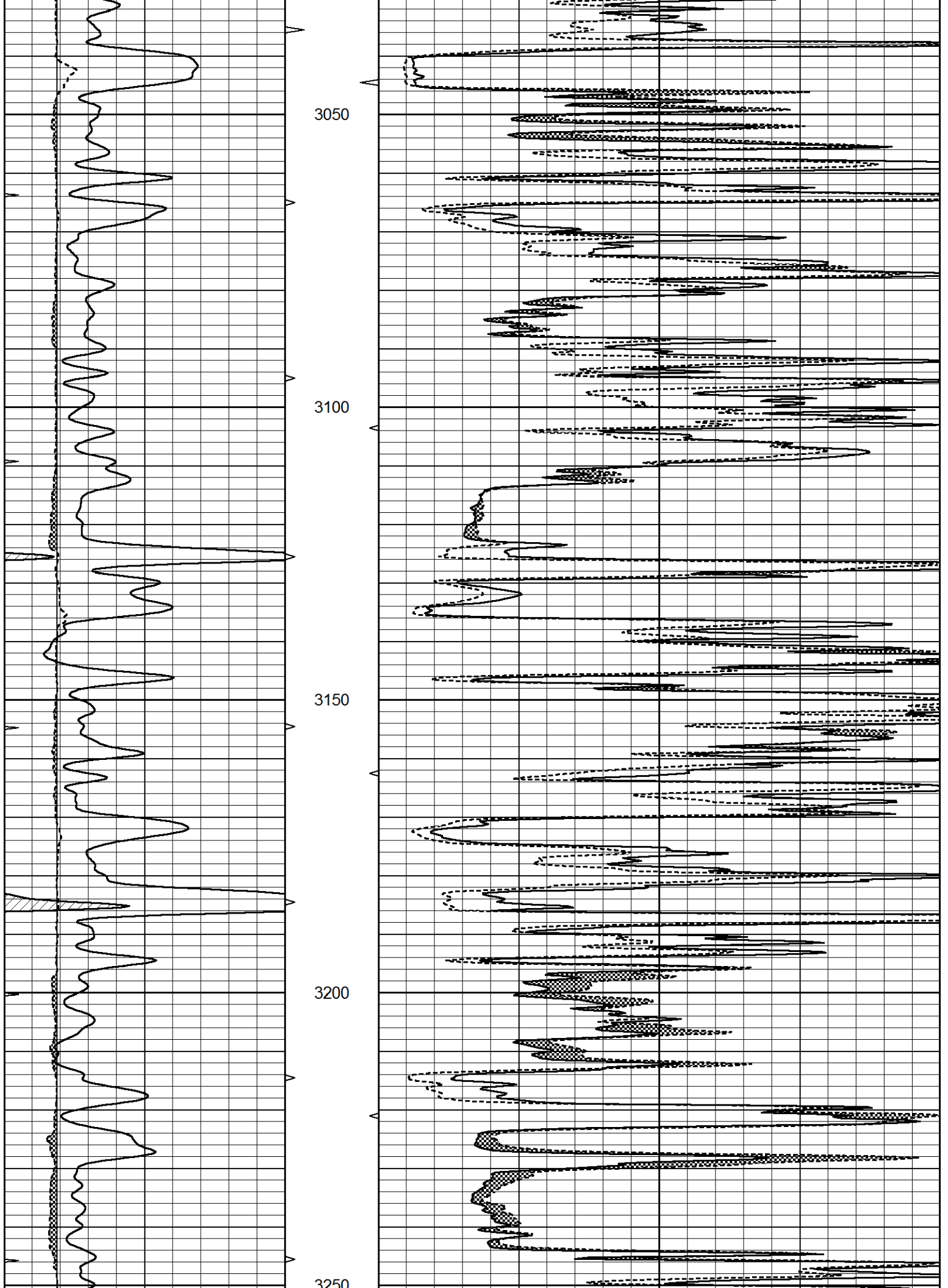


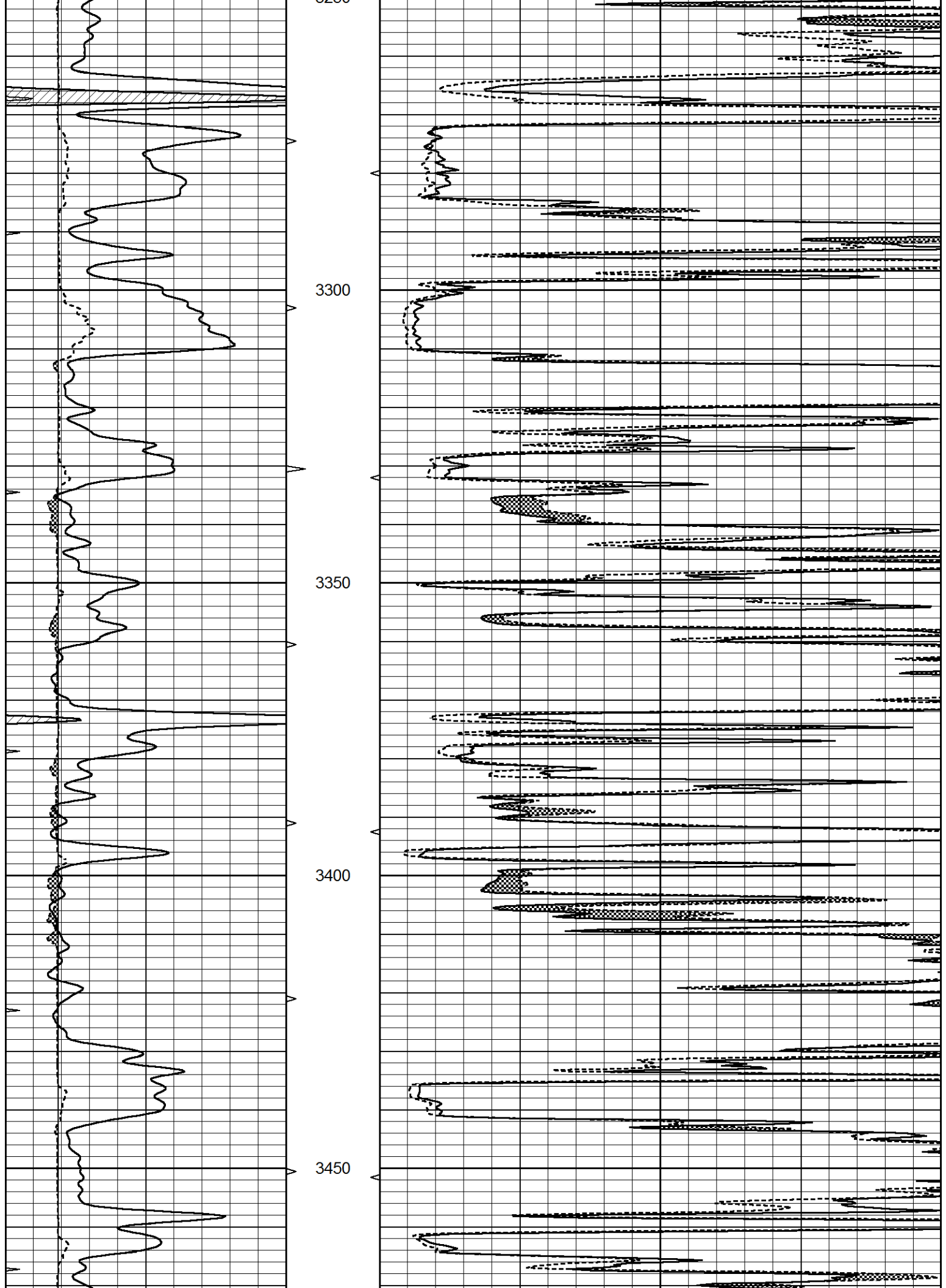
MAIN PASS

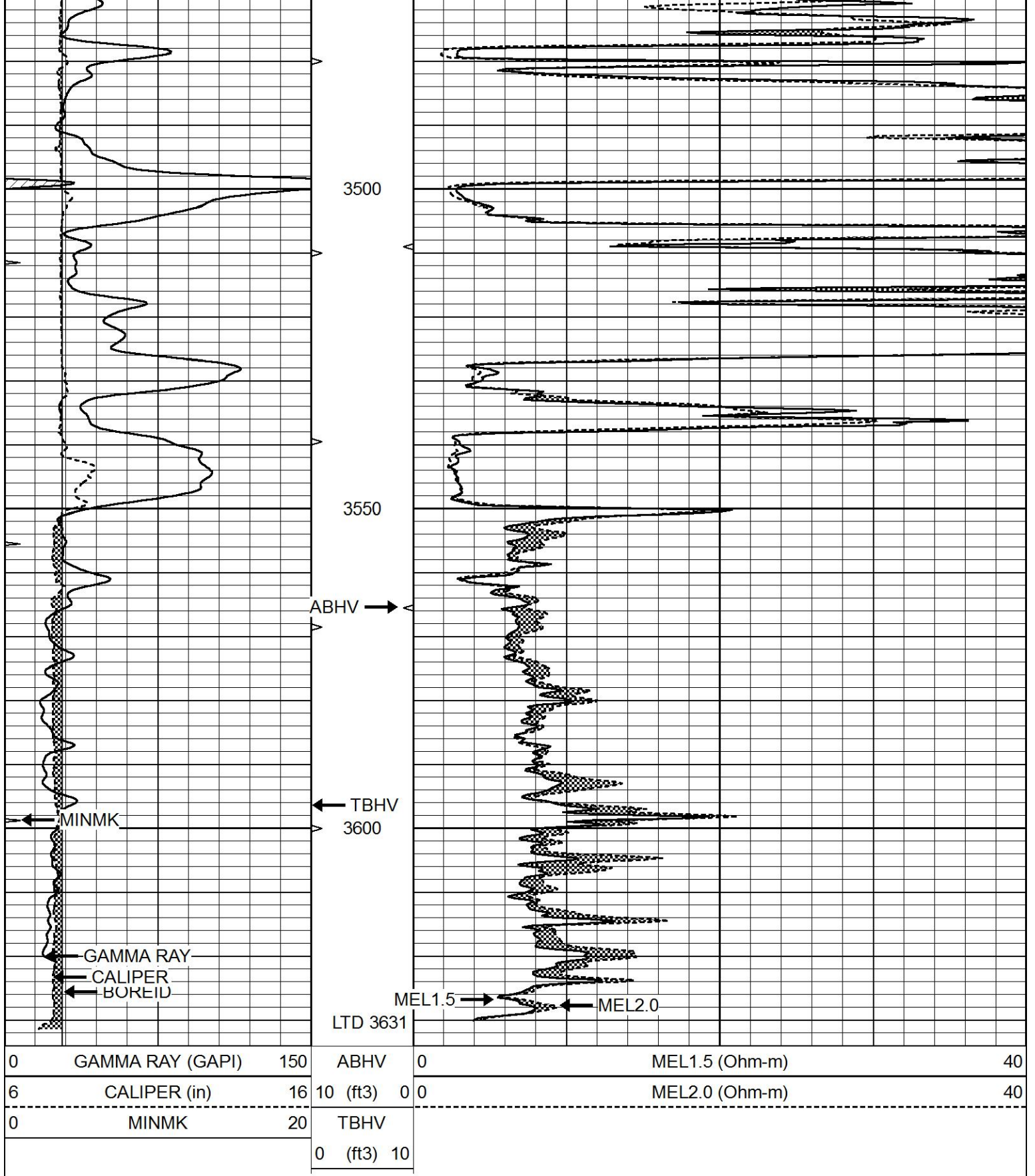
Database File 5618ddn.db
 Dataset Pathname pass5.1
 Presentation Format _micro
 Dataset Creation Thu Aug 26 14:08:39 2021
 Charted by Depth in Feet scaled 1:240

0	GAMMA RAY (GAPI)	150	ABHV	0	MEL1.5 (Ohm-m)	40
6	CALIPER (in)	16	10 (ft3)	0	MEL2.0 (Ohm-m)	40
0	MINMK	20	TBHV			
			0 (ft3)	10		



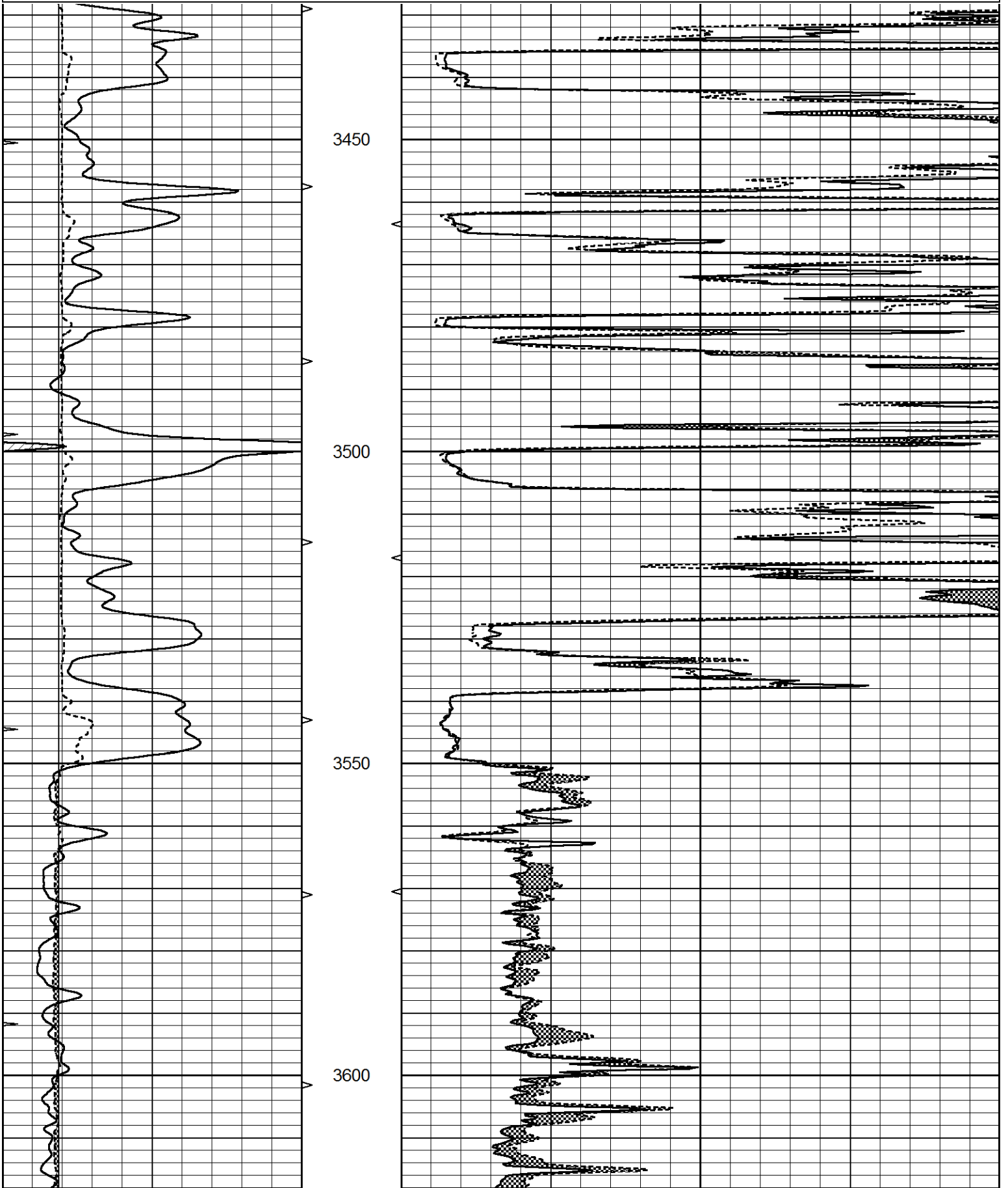






REPEAT SECTION

0	GAMMA RAY (GAPI)	150	ABHV	0	MEL1.5 (Ohm-m)	40
6	CALIPER (in)	16	10 (ft3)	0	MEL2.0 (Ohm-m)	40
0	MINMK	20	TBHV			
			0 (ft3)	10		



0	GAMMA RAY (GAPI)	150	ABHV	0	MEL1.5 (Ohm-m)	40
6	CALIPER (in)	16	10 (ft3) 0	0	MEL2.0 (Ohm-m)	40
0	MINMK	20	TBHV			
			0 (ft3) 10			

Calibration Report

Database File 5618ddn.db
Dataset Pathname pass4.1
Dataset Creation Thu Aug 26 14:05:17 2021

MICRO Calibration Report

Serial Number:	Micro1	
Tool Model:	ProbeL	
Performed:	Thu Aug 05 13:03:33 2021	
 Caliper Calibration:	Gain=2.815	Offset=4.552
	Low Cal	High Cal
References	8.500	13.500
Readings	0.887	2.663
 1.5" Calibration:	Gain=36.134	Offset=1.000
	Low Cal	High Cal
References	0.000	20.000
Readings	0.004	0.832
 2" Calibration:	Gain=38.000	Offset=1.200
	Low Cal	High Cal
References	0.000	20.000
Readings	0.022	0.793

Gamma Ray Calibration Report

Serial Number:	GR5	
Tool Model:	OPEN	
Performed:	Thu Jul 30 23:16:16 2020	
 Calibrator Value:	1.0	GAPI
Background Reading:	0.0	cps
Calibrator Reading:	1.0	cps
 Sensitivity:	0.6000	GAPI/cps