

MICRO
LOG



Company PHILLIPS EXPLORATION COMPANY L.C.
Well GEYER #3-34
Field SALINE VALLEY
County GRAHAM State KANSAS

Location: 330' FSL & 330' FEL
API #: 15-065-24208-0000
SEC 34 TWP 10S RGE 24W
Permanent Datum GROUND LEVEL Elevation 2360
Log Measured From KELLY BUSHING 5' A.G.L.
Drilling Measured From KELLY BUSHING
Elevation
K.B. 2365
D.F. 2363
G.L. 2360

Date	11/04/20
Run Number	TWO
Depth Driller	4000
Depth Logger	3999
Bottom Logged Interval	3997
Top Log Interval	3350
Casing Driller	8 5/8" @ 210
Casing Logger	210
Bit Size	7 7/8"
Type Fluid in Hole	CHEMICAL MUD
Density / Viscosity	9.1/62
pH / Fluid Loss	11.0/5.4
Source of Sample	FLOWLINE
Rm @ Meas. Temp	1.4 @ 60F
Rmf @ Meas. Temp	1.05 @ 60F
Rmc @ Meas. Temp	1.72 @ 60F
Source of Rmf / Rmc	MEASURED
Rm @ BHT	.72 @ 116F
Time Circulation Stopped	2 HOURS
Time Logger on Bottom	////
Maximum Recorded Temperature	116F
Equipment Number	1523
Location	HAYS, KANSAS
Recorded By	GUS PFANENSTIEL
Witnessed By	PAT DEENIHAN

<<< Fold Here >>>

All interpretations are opinions based on inferences from electrical or other measurements and we cannot and do not guarantee the accuracy or correctness of any interpretation, and we shall not, except in the case of gross or willful negligence on our part, be liable or responsible for any loss, costs, damages, or expenses incurred or sustained by anyone resulting from any interpretation made by any of our officers, agents or employees. These interpretations are also subject to our general terms and conditions set out in our current Price Schedule.

Comments

THANK YOU FOR USING ELI WIRELINE, HAYS, KS. (785) 628-6395

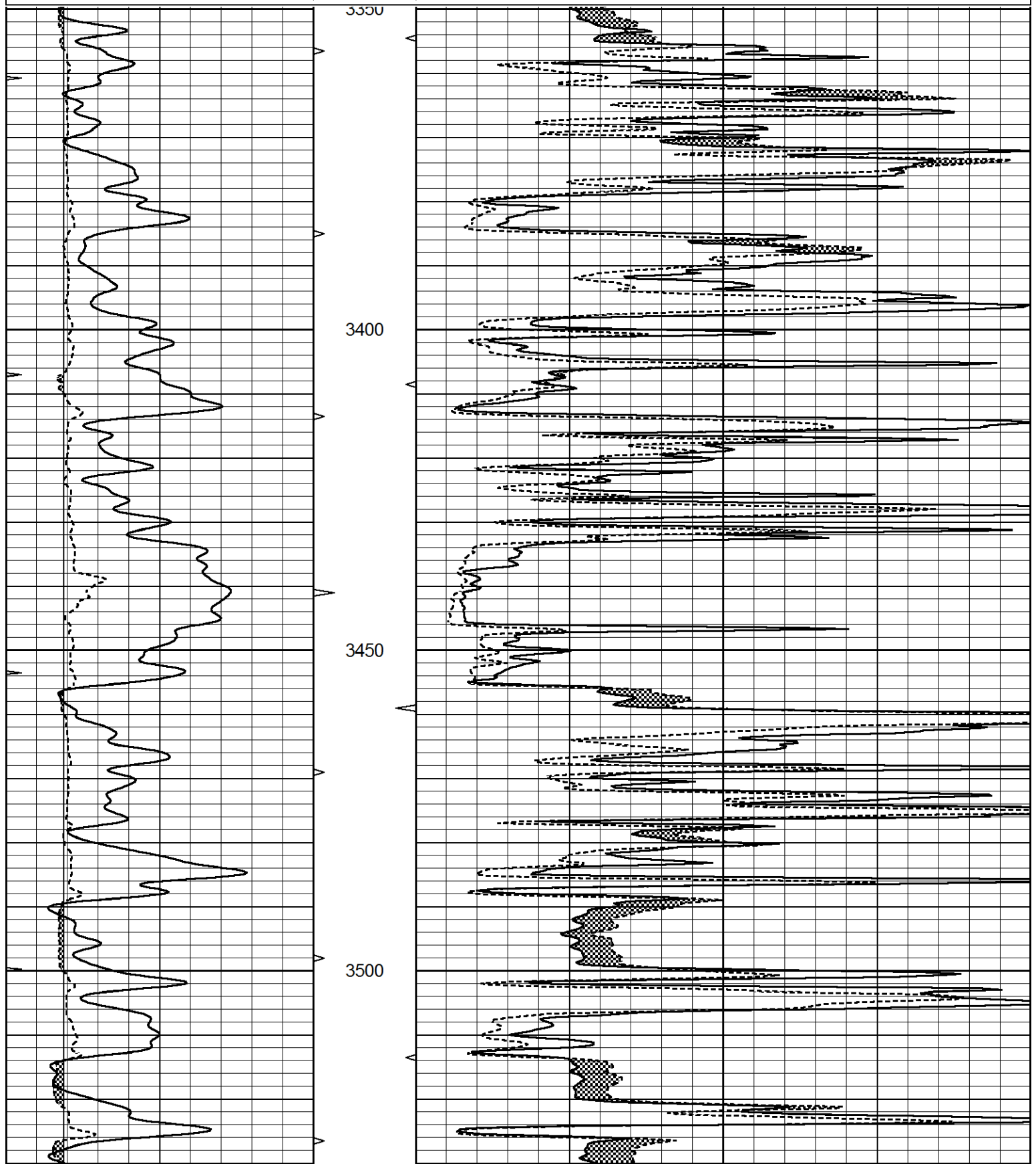
DIRECTIONS: WAKEENEY NORTH TO B RD.
6 WEST TO 200 RD., NORTH TO ROAD A, EAST 1/8, NORTH INTO.

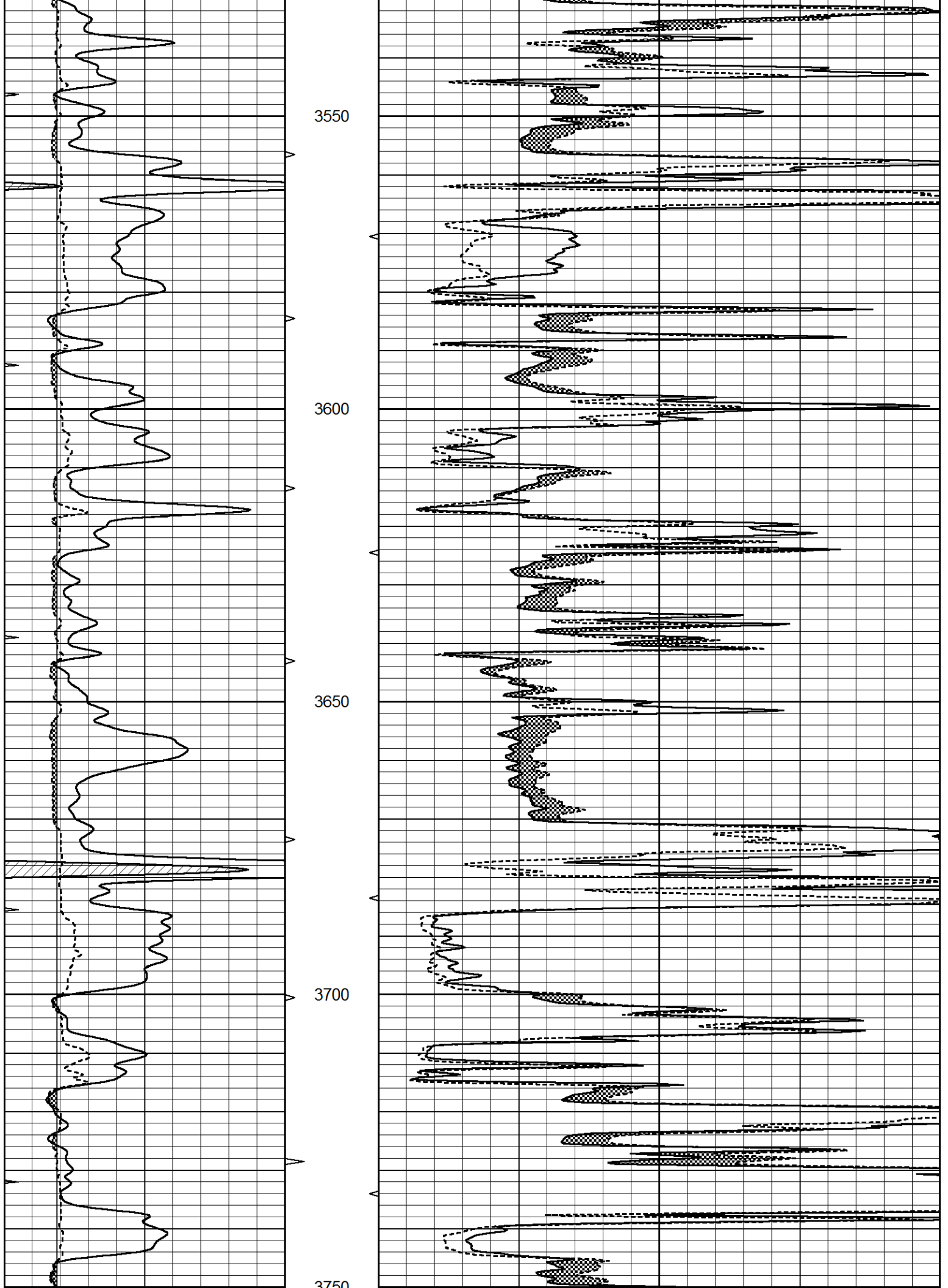


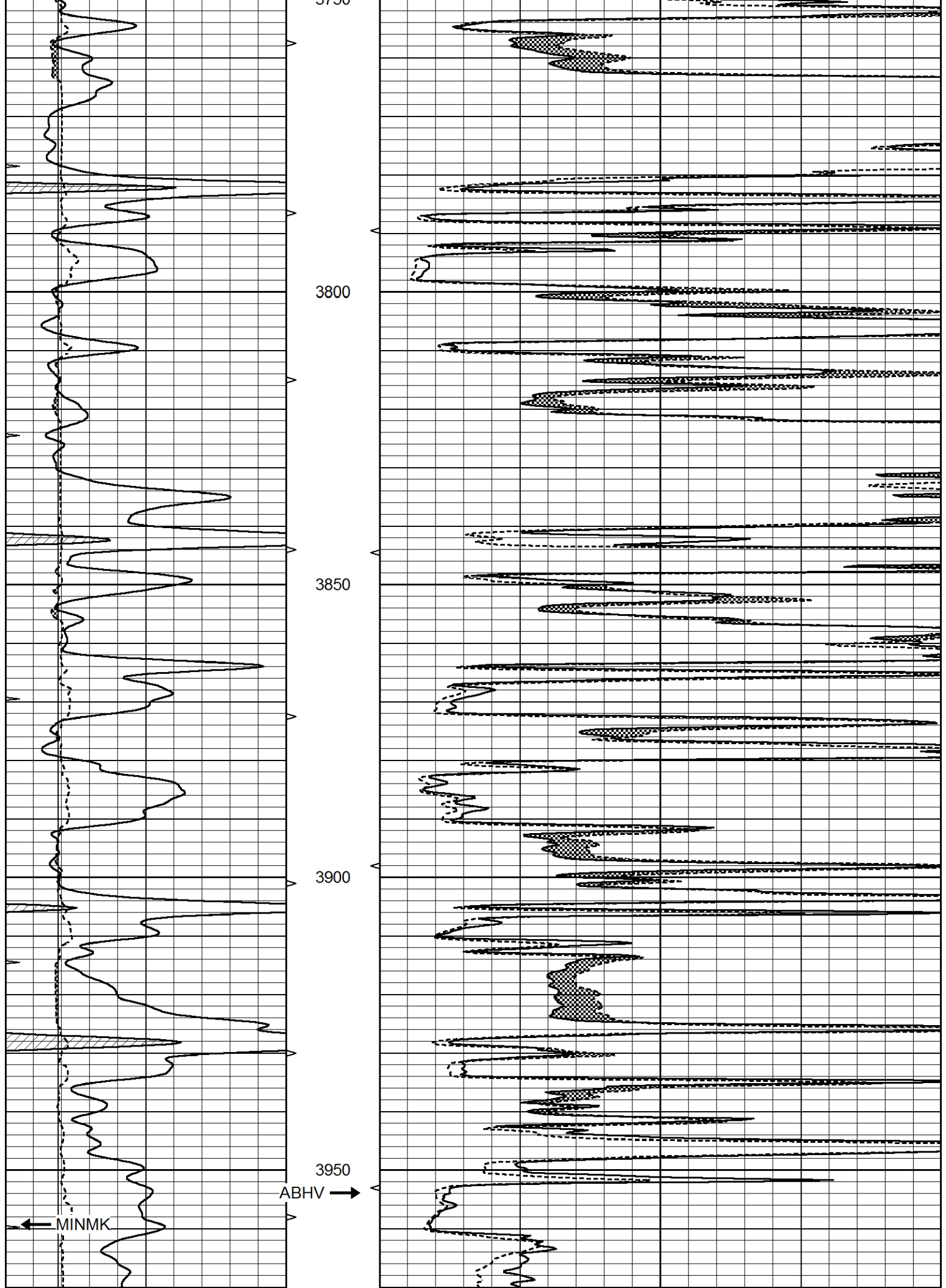
MAIN PASS

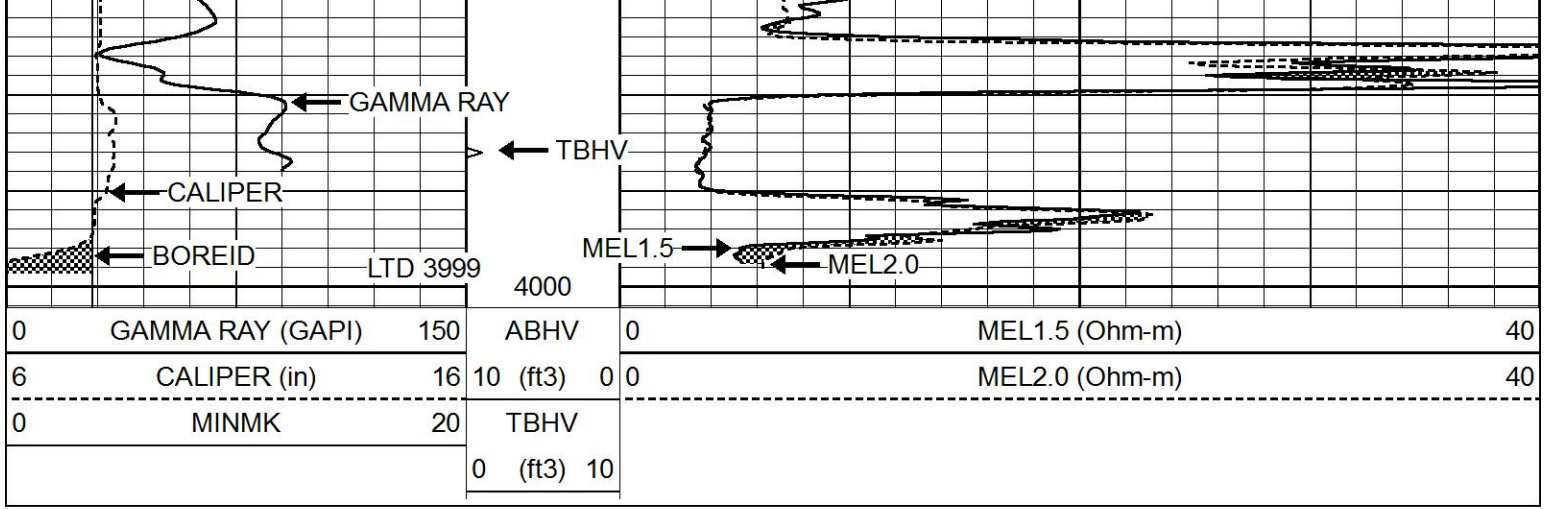
Database File 5889.db
 Dataset Pathname pass5
 Presentation Format _micro
 Dataset Creation Thu Nov 04 05:47:34 2021
 Charted by Depth in Feet scaled 1:240

0	GAMMA RAY (GAPI)	150	ABHV	0	MEL1.5 (Ohm-m)	40
6	CALIPER (in)	16	10 (ft3)	0	MEL2.0 (Ohm-m)	40
0	MINMK	20	TBHV			
			0 (ft3)	10		





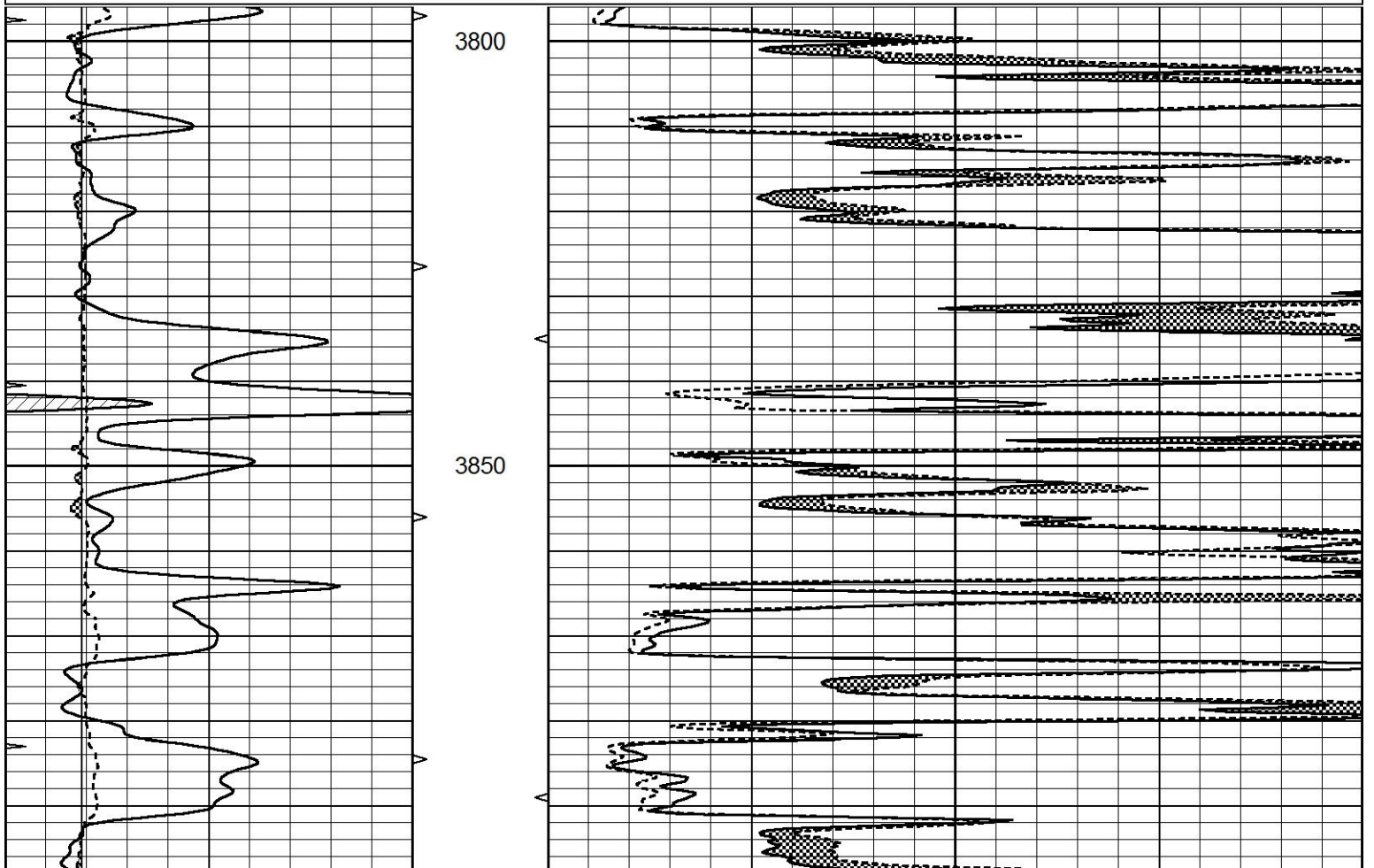


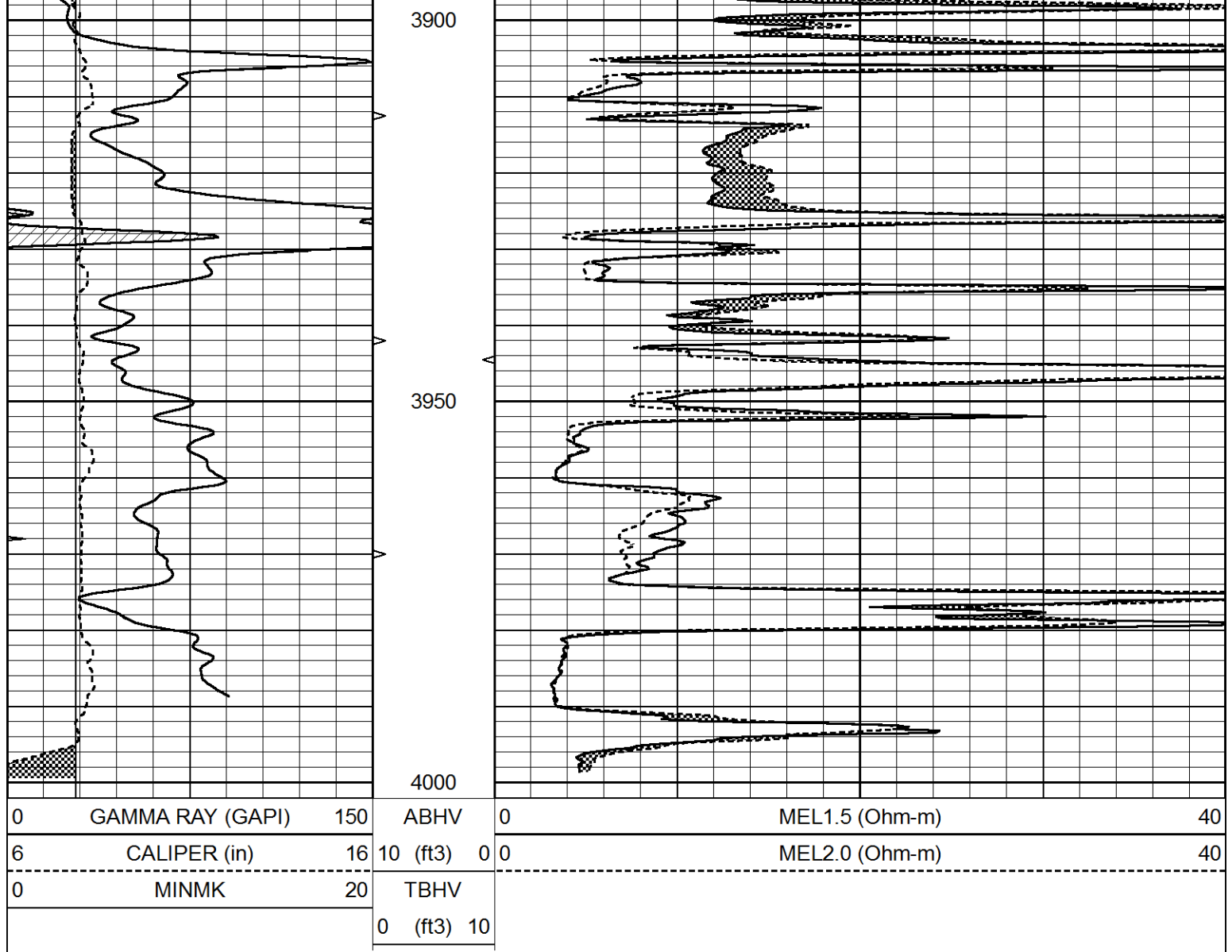


REPEAT SECTION

Database File 5889.db
 Dataset Pathname pass4.1
 Presentation Format _micro
 Dataset Creation Thu Nov 04 06:00:19 2021
 Charted by Depth in Feet scaled 1:240

0	GAMMA RAY (GAPI)	150	ABHV	0	MEL1.5 (Ohm-m)	40
6	CALIPER (in)	16	10 (ft3)	0	MEL2.0 (Ohm-m)	40
0	MINMK	20	TBHV			
			0 (ft3)	10		





Calibration Report

Database File 5889.db
 Dataset Pathname pass4.1
 Dataset Creation Thu Nov 04 06:00:19 2021

MICRO Calibration Report

Serial Number:	Micro1	
Tool Model:	ProbeL	
Performed:	Tue Oct 26 10:40:04 2021	
Caliper Calibration:	Gain=3.675	Offset=3.505
References	Low Cal 8.500	High Cal 13.500
Readings	1.196	2.557
1.5" Calibration:	Gain=36.134	Offset=0.000
References	Low Cal 0.000	High Cal 20.000
Readings	0.004	0.832
2" Calibration:	Gain=38.000	Offset=0.000
References	Low Cal 0.000	High Cal 20.000
Readings	0.000	0.788

Readings

0.022

0.793

Gamma Ray Calibration Report

Serial Number:	GR5	
Tool Model:	OPEN	
Performed:	Fri Oct 01 08:18:05 2021	
Calibrator Value:	1.0	GAPI
Background Reading:	0.0	cps
Calibrator Reading:	1.0	cps
Sensitivity:	0.7000	GAPI/cps