



CHANUTE, KANSAS

GAMMA RAY NEUTRON COMPLETION LOG

Company LAYMON OIL II, LLC
 Well CARL #4-21
 Field VERNON
 County WOODSON
 State KS

Location: 67° FSL 2819' FEL
 AP# : 15-207-29828-00-00
 Other Services

Permanent Datum SEC 5 TWP 24 RGE 16
 Log Measured From GL Elevation 1053
 Drilling Measured From GL Elevation 1053

Date 11-9-21
 Run Number 1 NW
 Depth Driller 1107.2

Top Log Interval 0
 Bottom Log Interval 1107.2
 Fluid Level SLURF

Type Fluid WATER
 Production Casing 2 7/8" @ TD
 Max. Recorded Temp @
 Estimated Cement Top @
 Calculated Cement Top @

Amount & Type Cement
 Amount & Type Admix
 Drilling Contractor
 Equipment Number 109

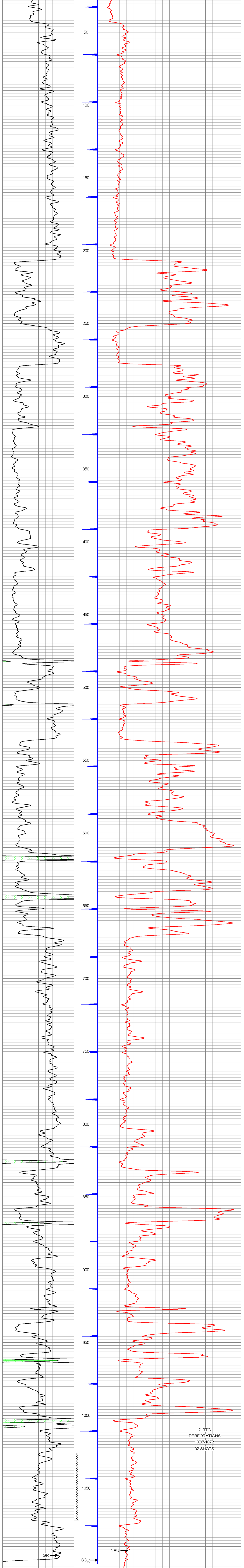
Location
 Recorded By DEREK SHAW
 Witnessed By THAO TRAHAN

<<< Fold Here >>>

All interpretations are opinions based on inferences from electrical or other measurements and we cannot and do not guarantee the accuracy or correctness of any interpretation, and we shall not, except in the case of gross or willful negligence on our part, be liable or responsible for any loss, costs, damages, or expenses incurred or sustained by anyone resulting from any interpretation made by any of our officers, agents or employees. These interpretations are also subject to our general terms and conditions set out in our current Price Schedule.

Comments

Database File: carl #4-21.db
 Dataset Pathname: pass1
 Presentation Format: gr-n-cc
 Dataset Creation: Tue Nov 09 15:08:44 2021 by Log Std Casedhole 09061
 Charted by: Depth in Feet scaled 1:240



150 gr 300 3 CCL 05 200 NEU (cps) 2100
 0 GR 150



Company LAYMON OIL II, LLC
 Well CARL #4-21
 Field VERNON
 County WOODSON SEC.5 TWP.24 RGE.16
 State KS Date 11-9-21