

Log Variables

DatabaseC:\ProgramData\Warrior\Data\brehm_seib_2_27.db
 Dataset field/well/stackml/pass4.1/_vars_

Top - Bottom

A	BOREID in	BOTTEMP degF	CASEOD in	CASETHCK in	FLUIDDEN g/cc	M	MATRXDEN g/cc
1	7.875	115	5.5	0	1	2	2.71
NPORSEL	PERFS	SNDERR mmho/m	SNDERRM mmho/m	SPSHIFT mV	SRFTEMP degF	SZCOR	TDEPTH ft
Limestone	0	0	0	600	50	Off	4432

Sensor	Offset (ft)	Schematic	Description	Length (ft)	O.D. (in)	Weight (lb)
GR	40.33		GR-M&W (103)	3.00	3.50	50.00
CNLSC CNSSC	37.23 36.48		CNT-M&W (210)	5.00	3.50	100.00
LSD DCAL SSD	28.18 28.17 27.68		CDL-M&W (303-03)	8.50	4.00	250.00
MCAL MI MN	19.58 19.58 19.58		ML-PSI STKBL ML (402)	7.58	4.00	65.00
RLL3F RLL3	15.50 15.50		DIL-M&W (504 HT)	18.25	3.50	220.00
CILD	8.33					

CILM 4.50

SP 0.20

Dataset: brehm_seib_2_27.db: field/well/stackml/pass4.1
 Total length: 42.33 ft
 Total weight: 685.00 lb
 O.D.: 4.00 in



MIDWEST WIRELINE

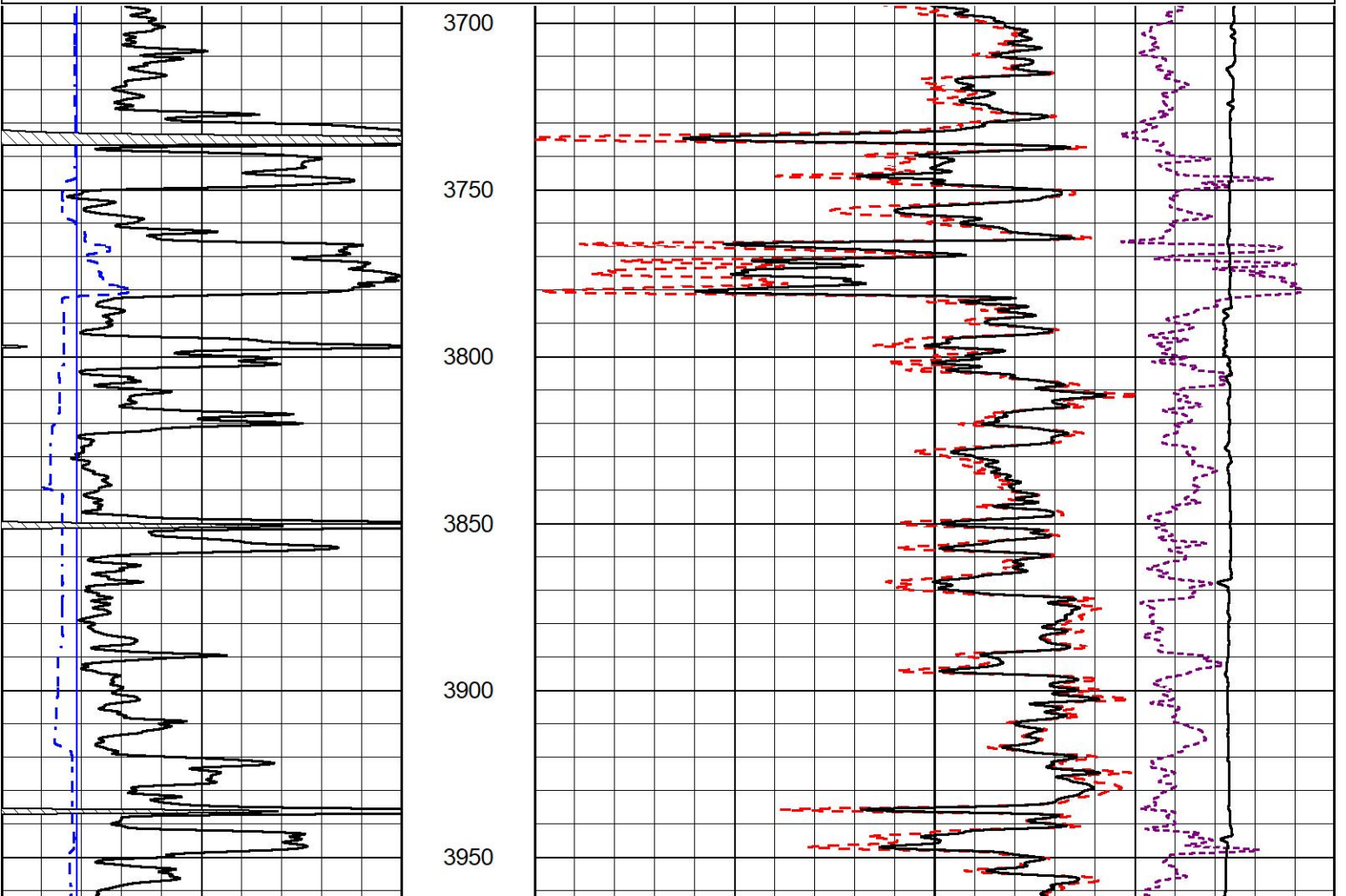
2" SCALE BULK DENSITY

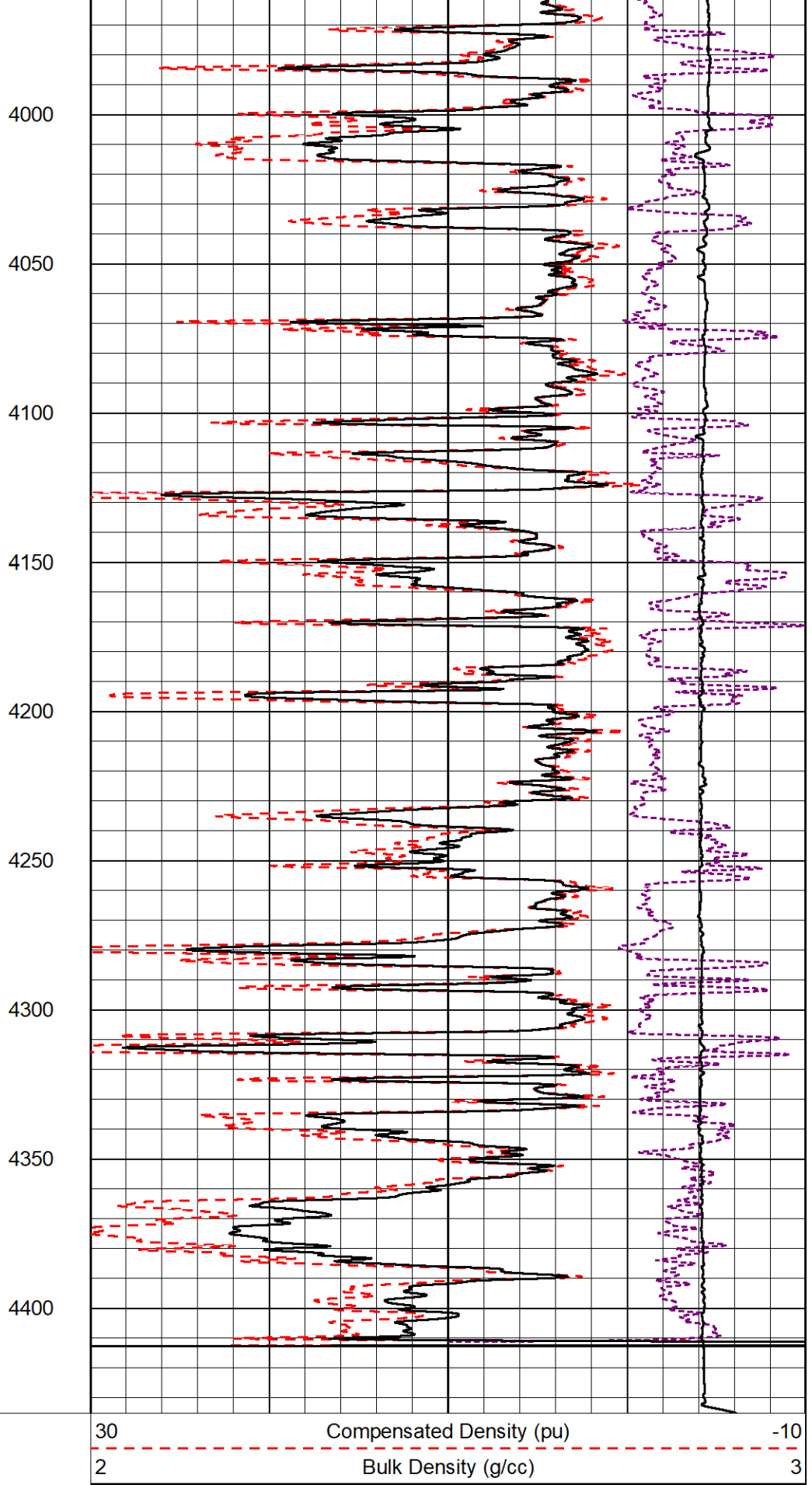
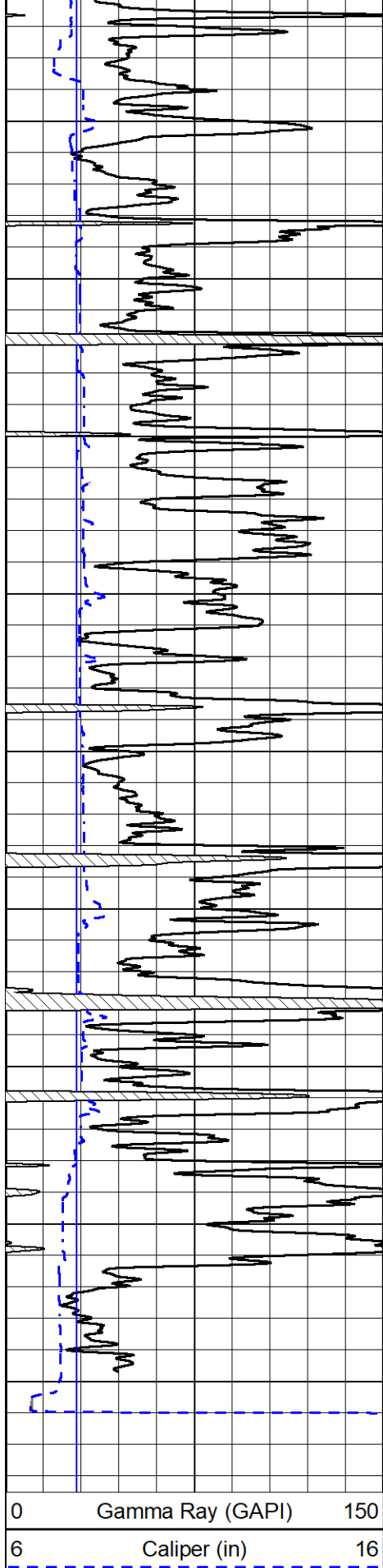
MAIN PASS

Database File brehm_seib_2_27.db
 Dataset Pathname stackml/pass3.1
 Presentation Format _cdl
 Dataset Creation Fri Jan 07 18:26:36 2022
 Charted by Depth in Feet scaled 1:600

0	Gamma Ray (GAPI)	150
6	Caliper (in)	16

30	Compensated Density (pu)	-10
2	Bulk Density (g/cc)	3
15000	Line Tension (lb)	0
-0.25	Correction (g/cc)	0.25





0	Gamma Ray (GAPI)	150
6	Caliper (in)	16

30	Compensated Density (pu)	-10
2	Bulk Density (g/cc)	3
15000	Line Tension (lb)	0
-0.25	Correction (g/cc)	0.25

DETAIL SECTION



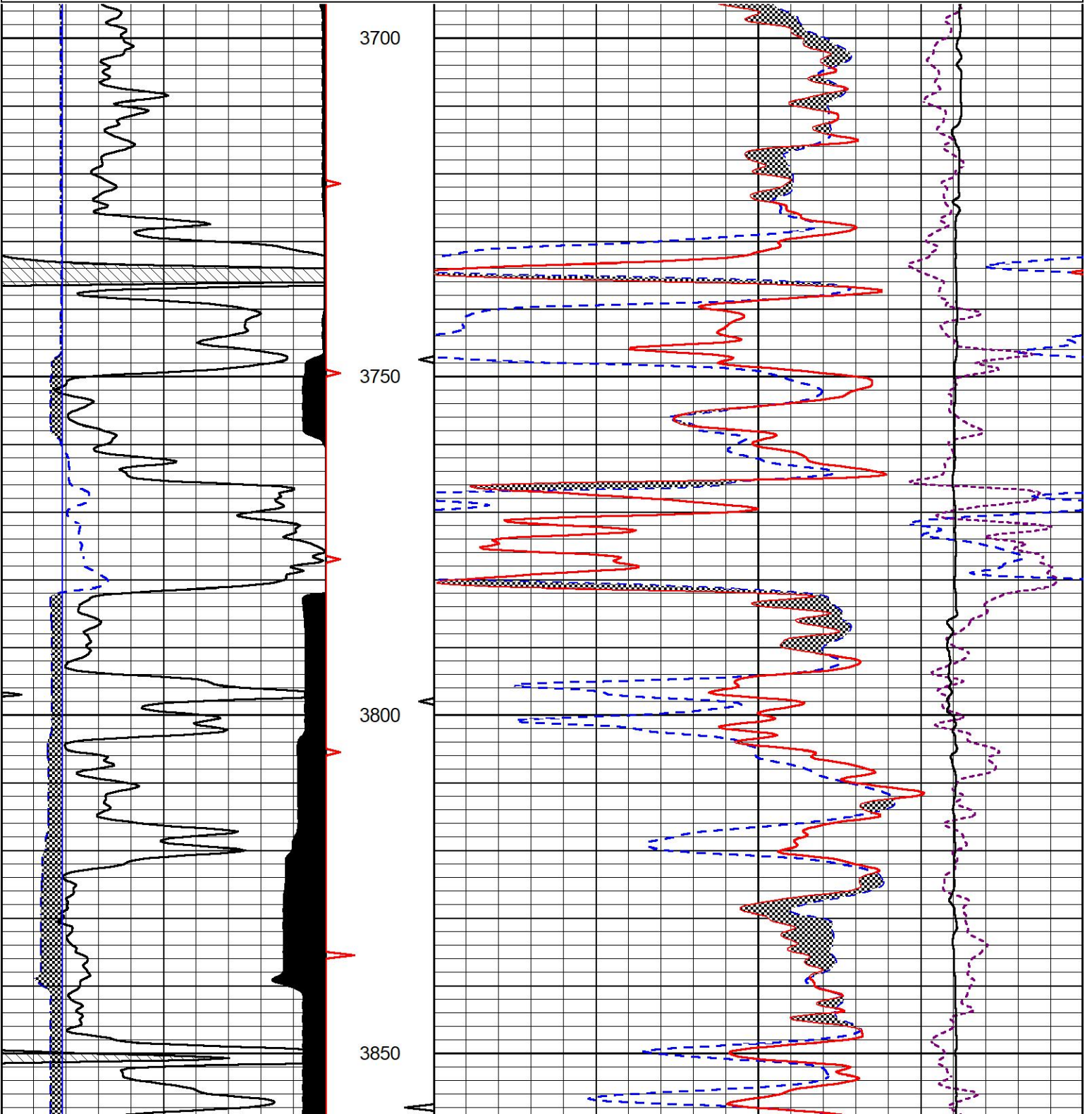
DETAIL SECTION

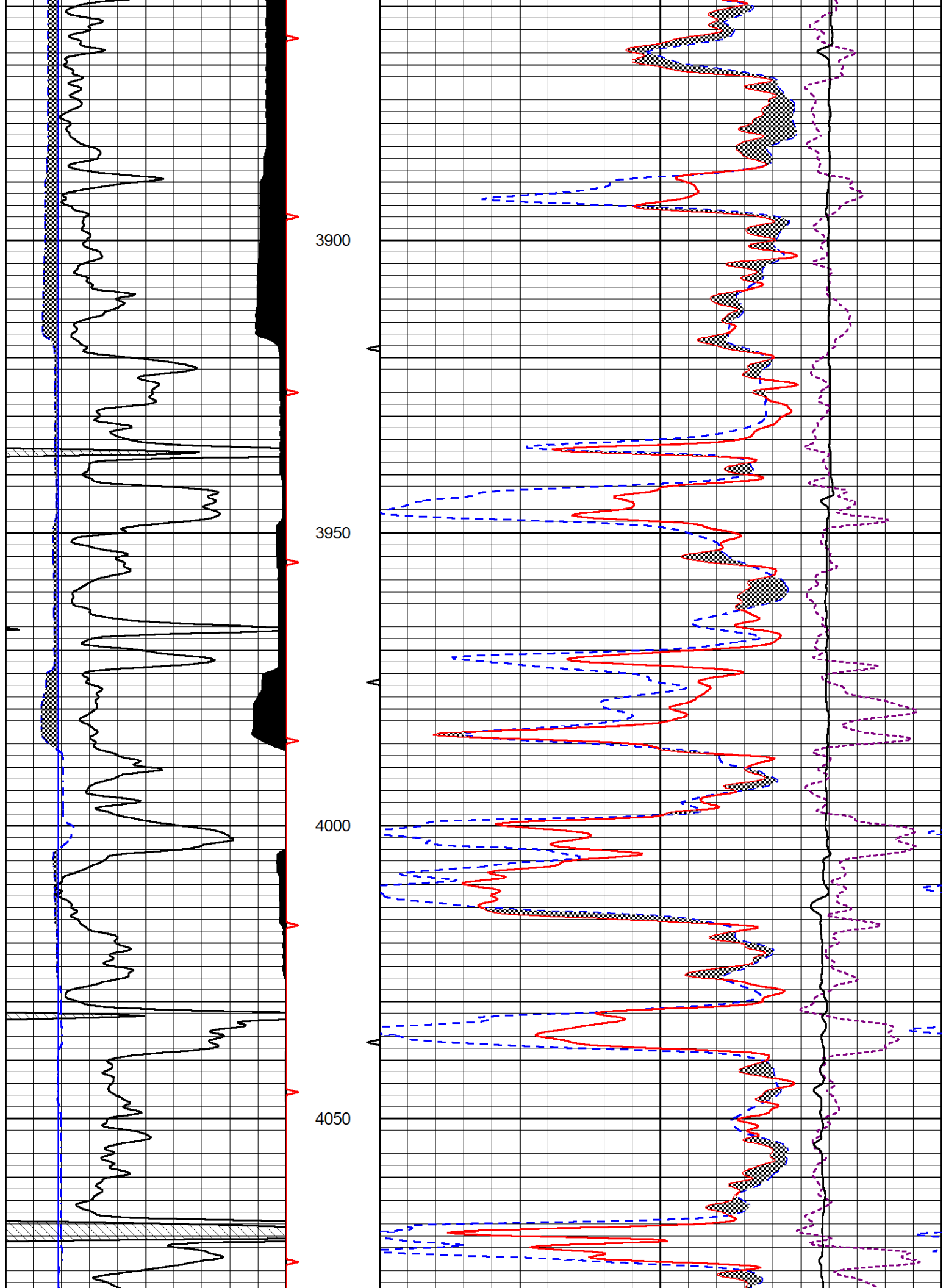
MAIN PASS

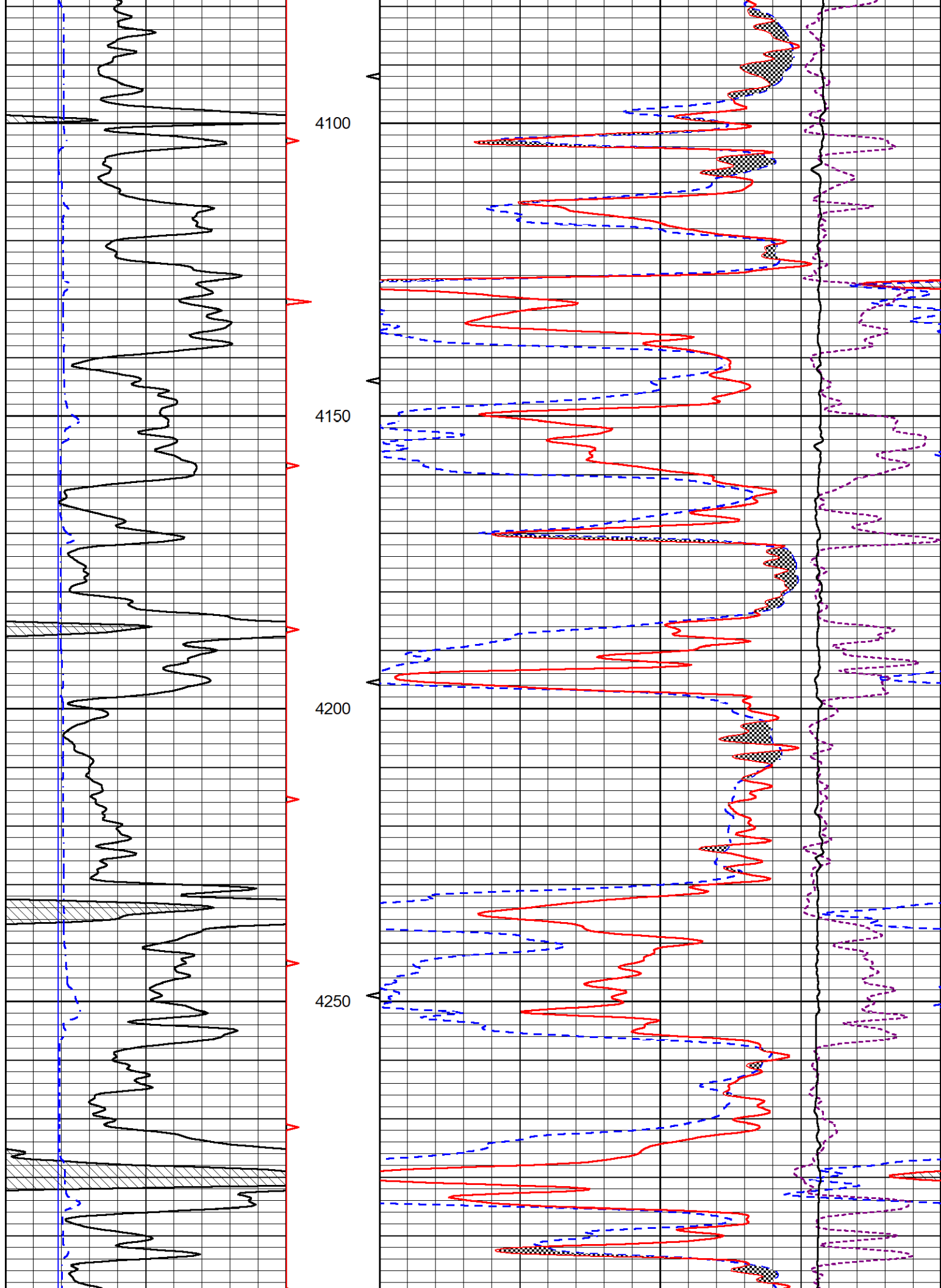
Database File brehm_seib_2_27.db
 Dataset Pathname stackml/pass4.1
 Presentation Format _CNDLS~1
 Dataset Creation Fri Jan 07 18:28:22 2022
 Charted by Depth in Feet scaled 1:240

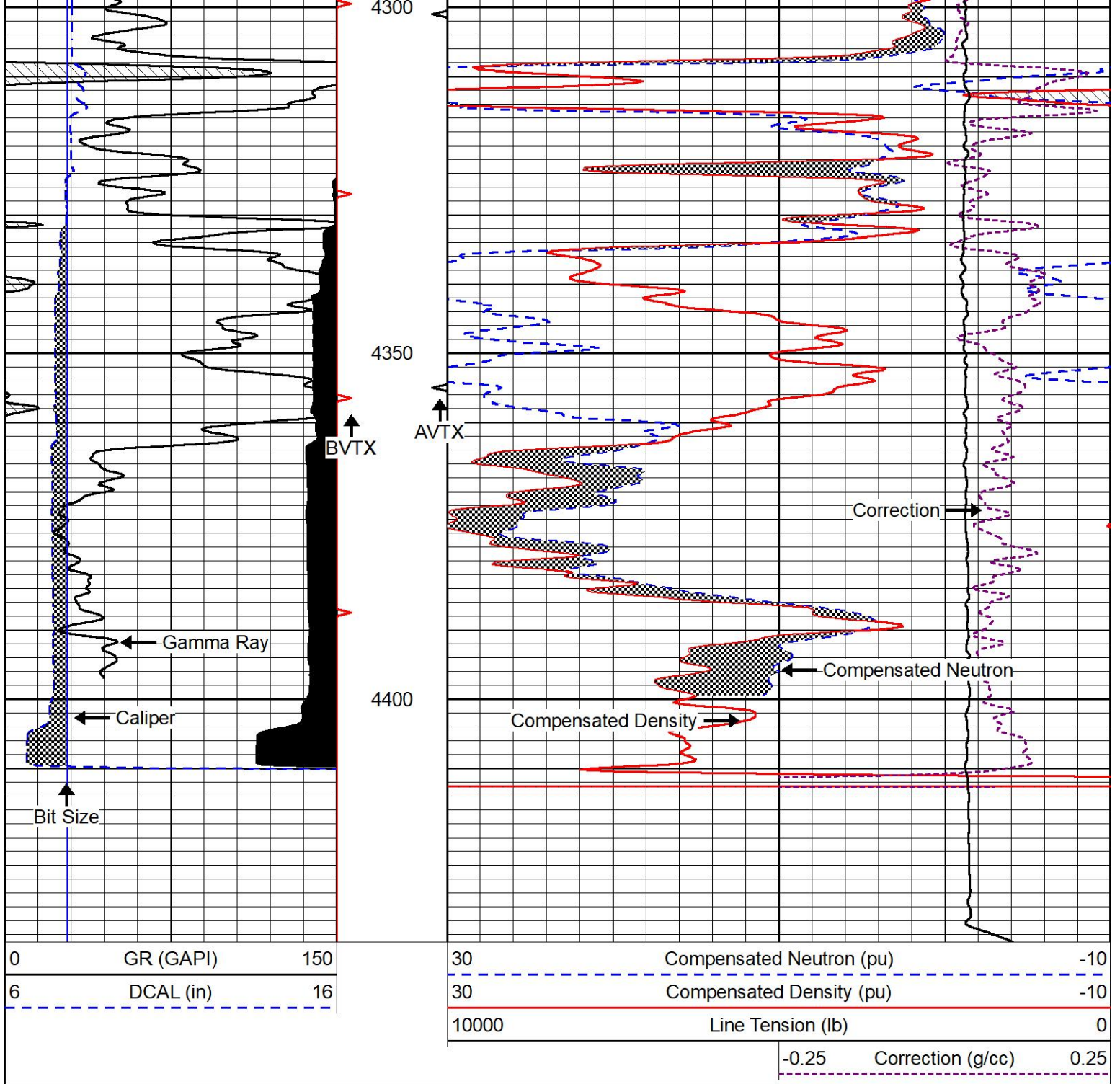
0	GR (GAPI)	150
6	DCAL (in)	16

30	Compensated Neutron (pu)	-10
30	Compensated Density (pu)	-10
10000	Line Tension (lb)	0
-0.25	Correction (g/cc)	0.25







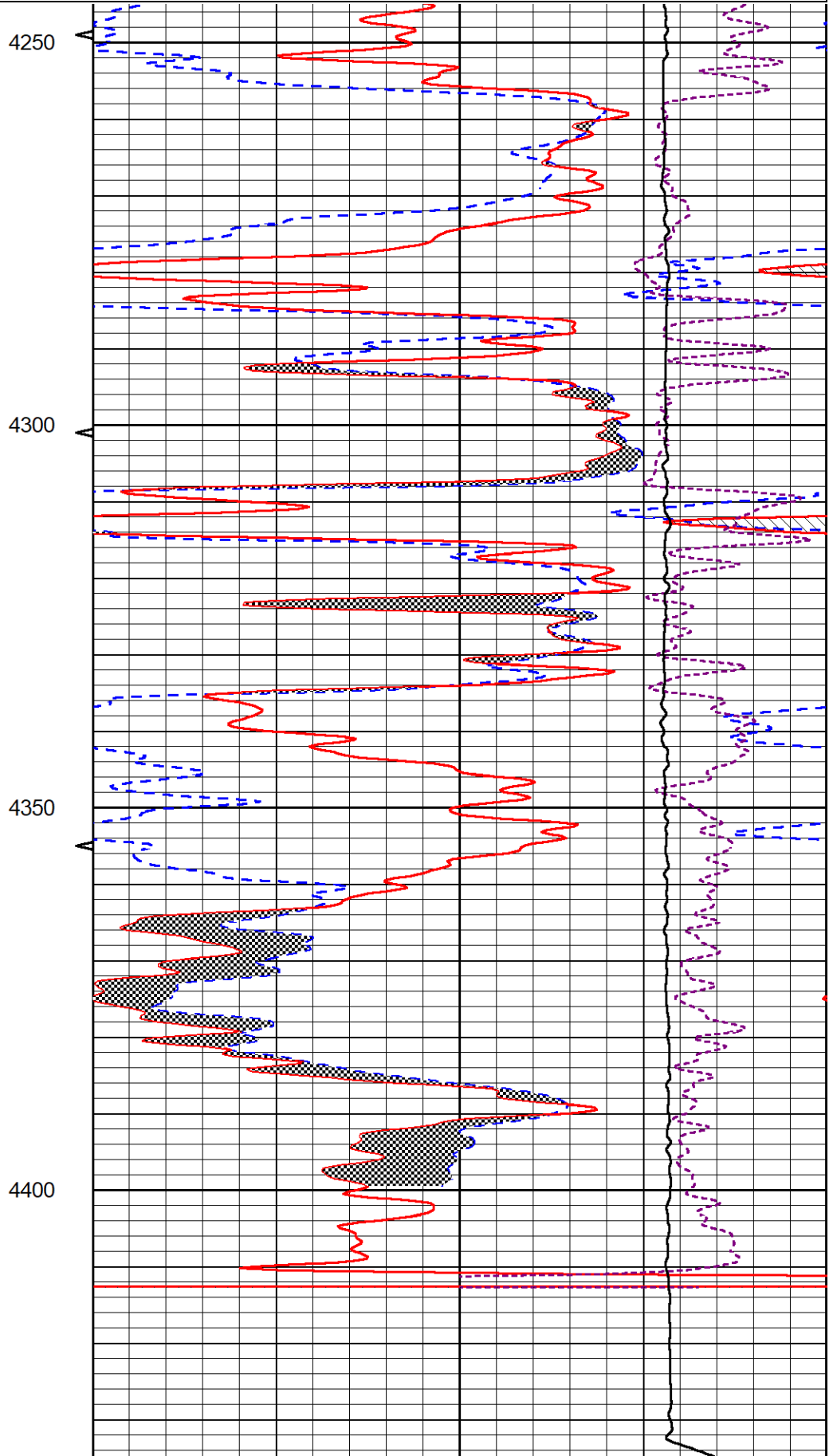
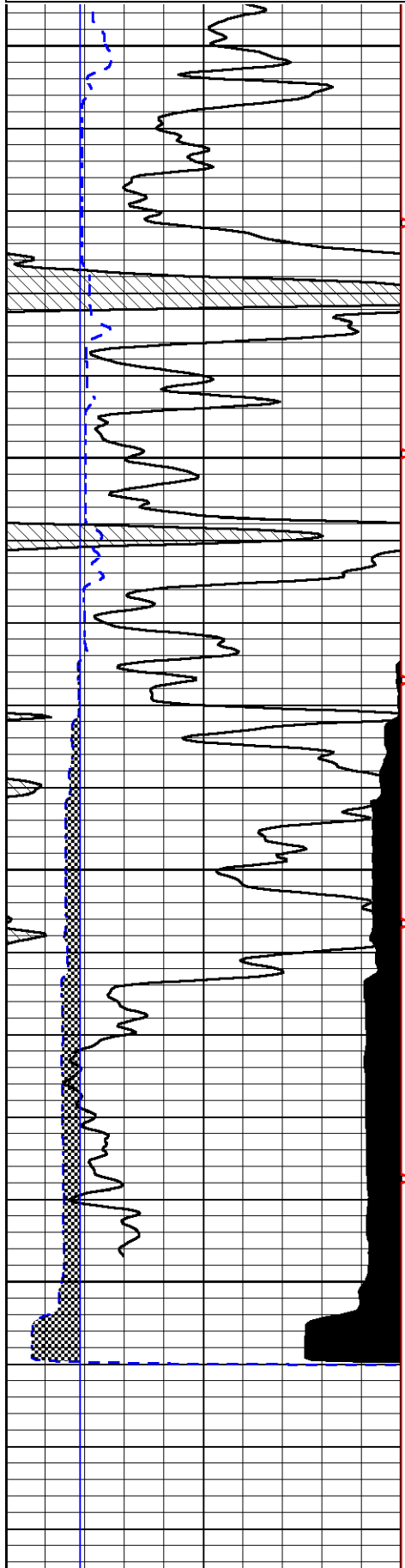


REPEAT SECTION

REPEAT PASS

Database File brehm_seib_2_27.db
 Dataset Pathname stackml/pass2.1
 Presentation Format _CNDLS~1
 Dataset Creation Fri Jan 07 18:27:04 2022
 Charted by Depth in Feet scaled 1:240

0	GR (GAPI)	150	30	Compensated Neutron (pu)	-10	
6	DCAL (in)	16	30	Compensated Density (pu)	-10	
			10000	Line Tension (lb)	0	
				-0.25	Correction (g/cc)	0.25



0	GR (GAPI)	150
6	DCAL (in)	16

30	Compensated Neutron (pu)	-10
30	Compensated Density (pu)	-10
10000	Line Tension (lb)	0
-0.25	Correction (g/cc)	0.25

Calibration Report

Database File brehm_seib_2_27.db
 Dataset Pathname stackml/pass4.1
 Dataset Creation Fri Jan 07 18:28:22 2022

Dual Induction Calibration Report

Serial-Model: 504 HT-M&W
 Surface Cal Performed: Thu Dec 16 22:32:49 2021

Loop:	Readings		References			Results	
	Air	Loop	Air	Loop		m	b
Deep	178.615	710.235	0.000	255.800	mmho/m	0.650	-19.000
Medium	161.982	1441.110	0.000	255.800	mmho/m	0.450	-45.500

Microlog Calibration Report

Serial-Model: 402-PSI STKBL ML
 Performed: Thu Dec 16 22:29:48 2021

	Readings		References			Results	
	Zero	Cal	Zero	Cal		m	b
Normal	0.0037	0.0043	0.0000	10.0000	Ohm-m	23000.0000	-1.0000
Inverse	0.1208	0.0013	0.0000	10.0000	Ohm-m	20000.0000	0.0000
Caliper	1.0020	1.0834	5.5000	16.5000	in	135.1520	-131.2000

Compensated Density Calibration Report

Serial-Model: 303-03-M&W
 Source #: 21170B
 Master Calibration Performed: Thu Dec 16 23:28:34 2021

Master Calibration

	Density		Far Detector	Near Detector	
Magnesium	1.755	g/cc	3841.78	5151.73	cps
Aluminum	2.670	g/cc	700.98	3068.49	cps
Spine Angle = 73.06			Density/Spine Ratio = 0.515		
	Size		Reading		
Small Ring	4.00	in	1.17		
Large Ring	14.00	in	1.05		

Compensated Neutron Calibration Report

Serial-Model: 210-M&W
 Source #: N-1238
 Master Calibration Performed: Fri Dec 3 09:16:24 2021

Master Calibration

Detector	Readings	Target	Normalization
Short Space	6240.00 cps	1000.00 cps	1.6025
Long Space	460.00 cps	1000.00 cps	1.9500

Gamma Ray Calibration Report

Serial Number:	103	
Tool Model:	M&W	
Performed:	Fri Dec 3 12:13:24 2021	
Calibrator Value:	500.0	GAPI
Background Reading:	28.0	cps
Calibrator Reading:	986.0	cps
Sensitivity:	0.5700	GAPI/cps



Company	Brehm Asset Management LLC
Well	SEIB #2-27
Field	SEIB
County	Ness
State	Kansas