

MICRO  
LOG



Company TRIPLE CROWN OPERATING, LLC.  
Well HARTING #1-9  
Field UNNAMED  
County HODGEMAN State KANSAS

Location: API #: 15-083-21991-0000  
335' FNL & 2054' FWL  
SEC 9 TWP 21S RGE 21W  
Permanent Datum GROUND LEVEL Elevation 2179  
Log Measured From KELLY BUSHING 5' A.G.L.  
Drilling Measured From KELLY BUSHING  
Other Services CDL/CNL DIL  
Elevation K.B: 2184 D.F: 2182 G.L: 2179

Date	08/05/21
Run Number	TWO
Depth Driller	4420
Depth Logger	4418
Bottom Logged Interval	4416
Top Log Interval	3500
Casing Driller	8 5/8" @ 1349
Casing Logger	1349
Bit Size	7 7/8"
Type Fluid in Hole	CHEMICAL MUD
Density / Viscosity	9.4/48
pH / Fluid Loss	9.5/8.8
Source of Sample	FLOWLINE
Rm @ Meas. Temp	.4@ 70F
Rmf @ Meas. Temp	.30@ 70F
Rmc @ Meas. Temp	.48 @ 70F
Source of Rmf / Rmc	MEASURED
Rm @ BHT	.23@ 120F
Time Circulation Stopped	2 HOURS
Time Logger on Bottom	////
Maximum Recorded Temperature	120F
Equipment Number	1523
Location	HAYS, KANSAS
Recorded By	GUS PFANENSTIEL
Witnessed By	SEAN DEENIHAN
	CHRIS JOHNSON

<<< Fold Here >>>

All interpretations are opinions based on inferences from electrical or other measurements and we cannot and do not guarantee the accuracy or correctness of any interpretation, and we shall not, except in the case of gross or willful negligence on our part, be liable or responsible for any loss, costs, damages, or expenses incurred or sustained by anyone resulting from any interpretation made by any of our officers, agents or employees. These interpretations are also subject to our general terms and conditions set out in our current Price Schedule.

Comments

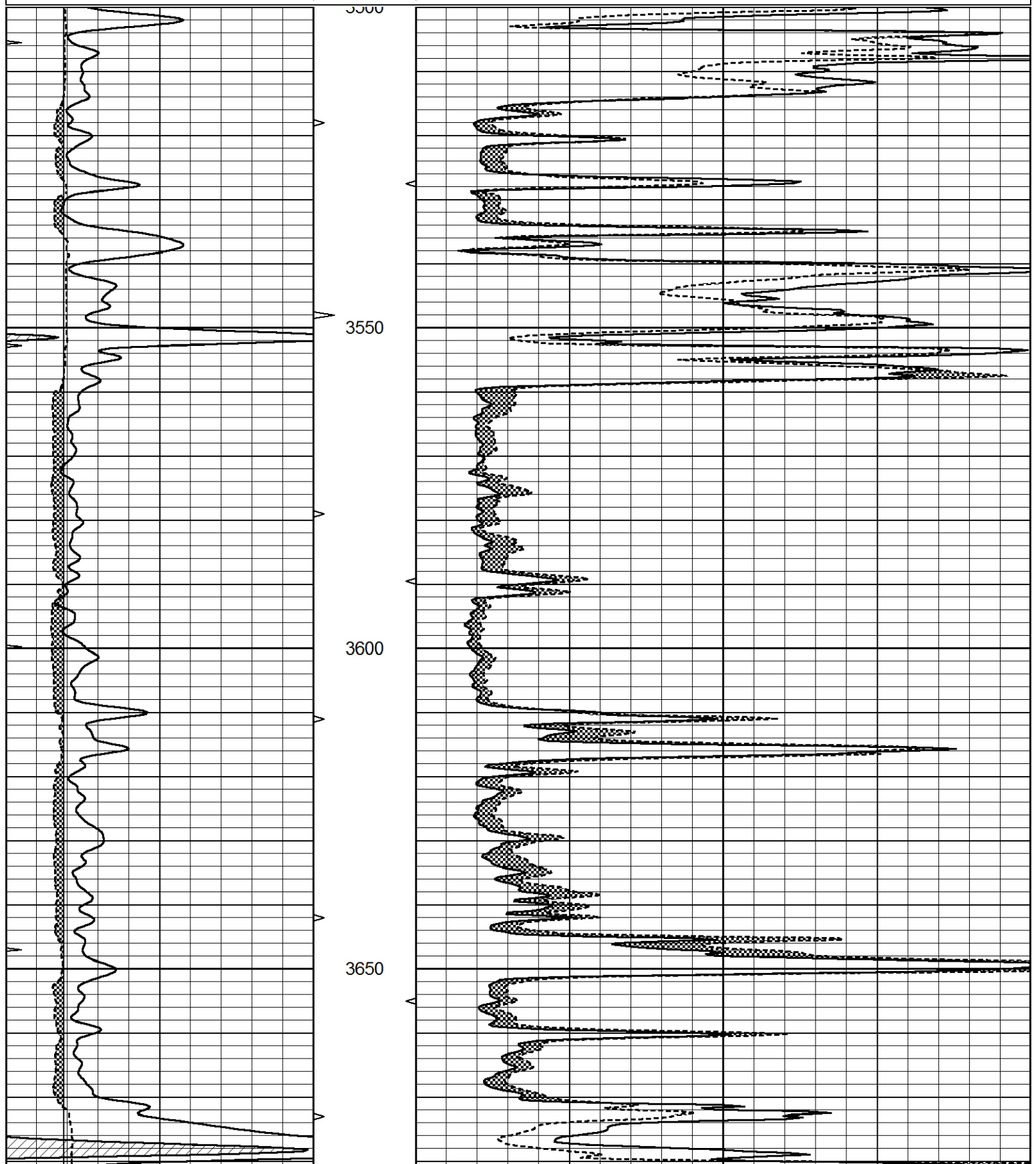
THANK YOU FOR USING ELI WIRELINE, HAYS, KS. (785) 628-6395  
DIRECTIONS: EAST OF BAZINE TO GG RD. SOUTH 14 MILES,  
TO RD X, EAST 1/2 MILE, SOUTH INTO.

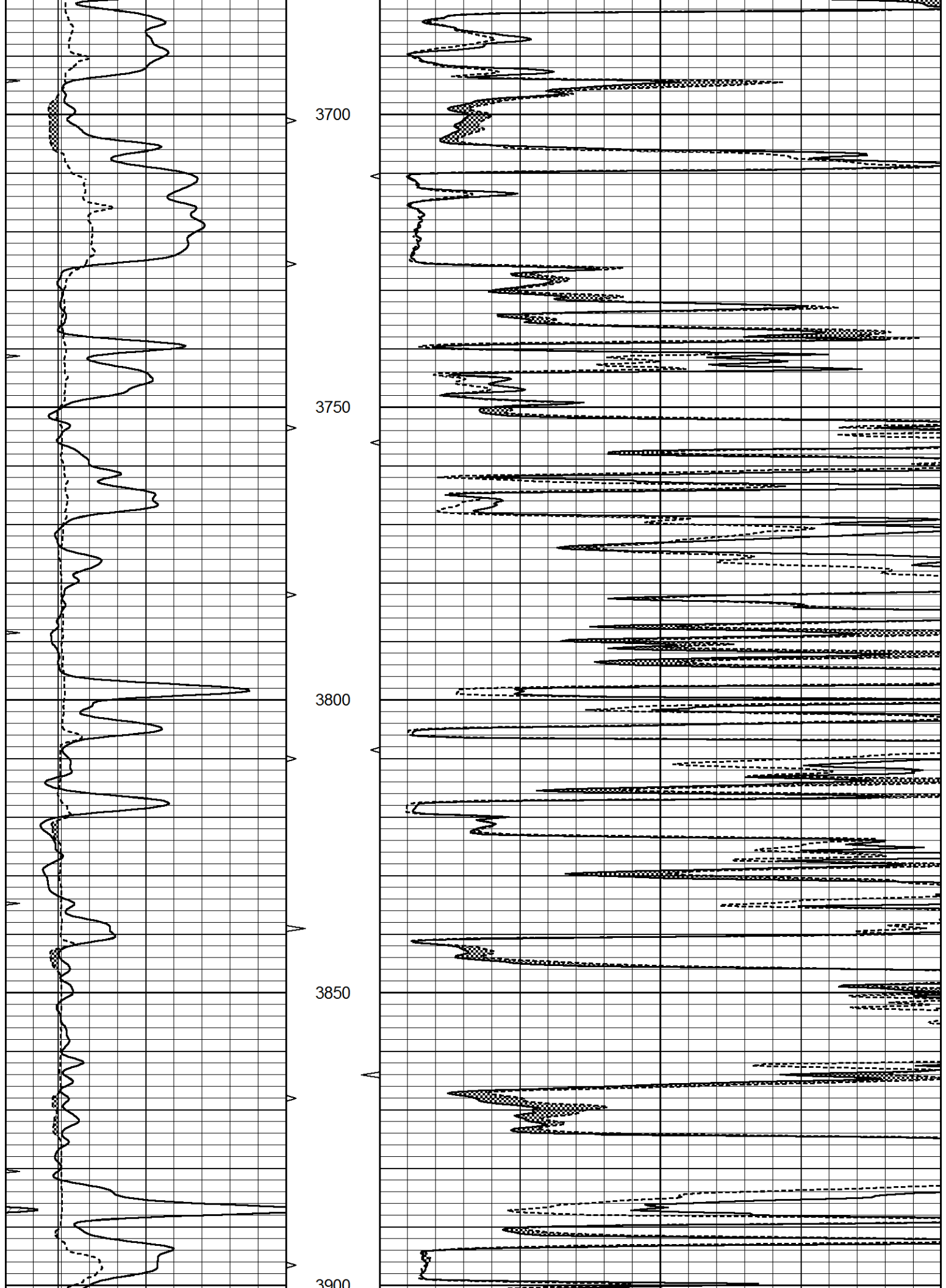


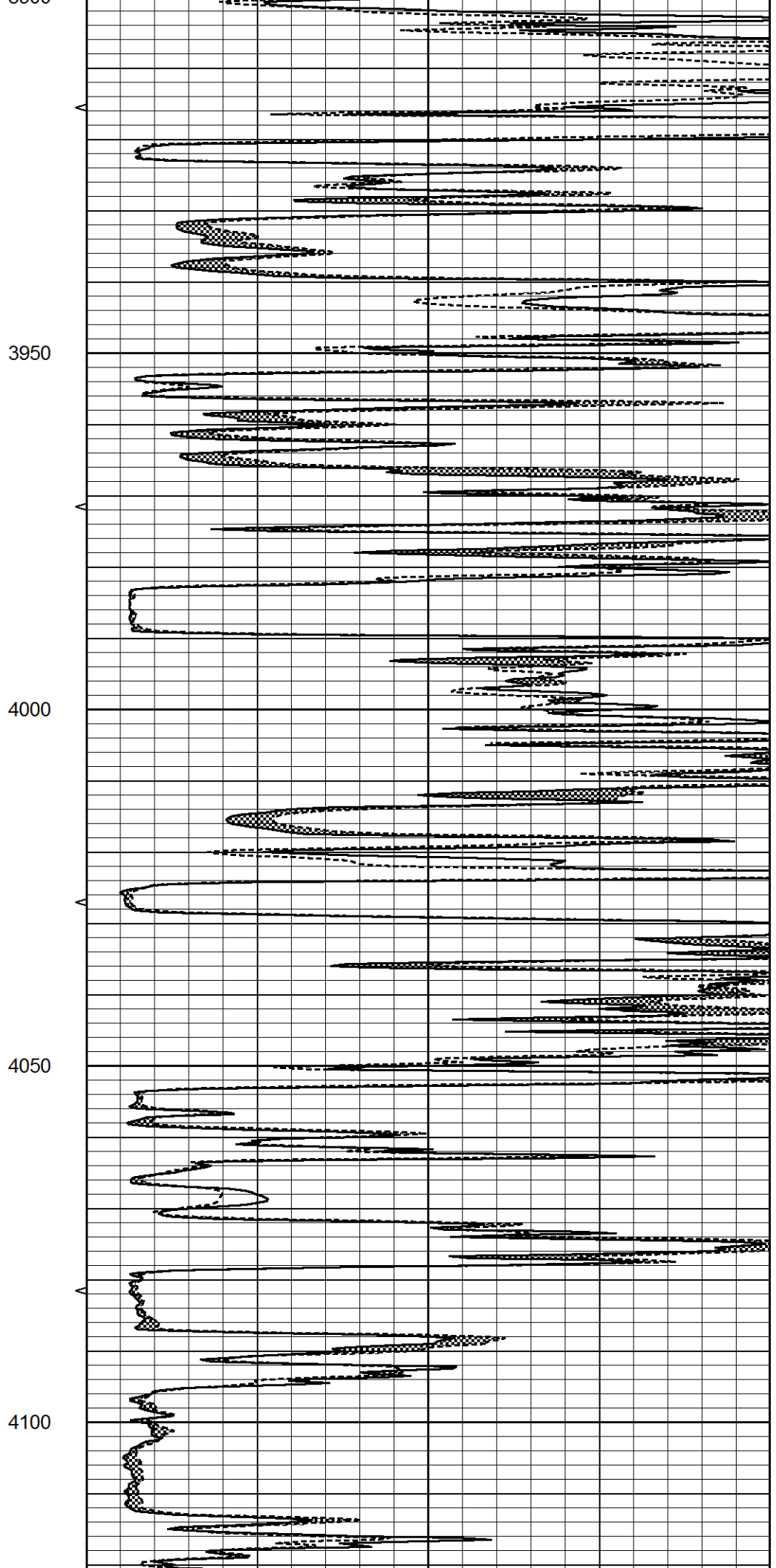
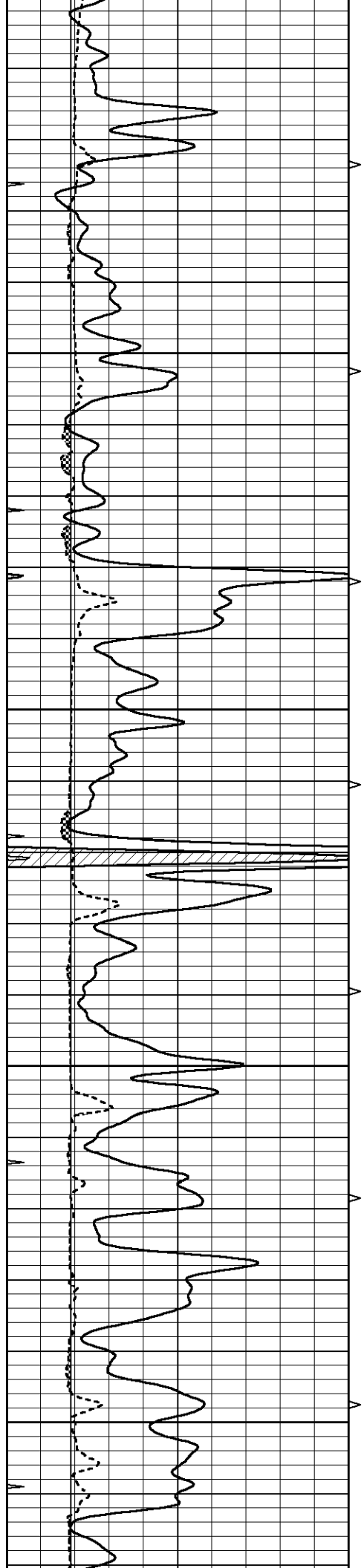
MAIN PASS

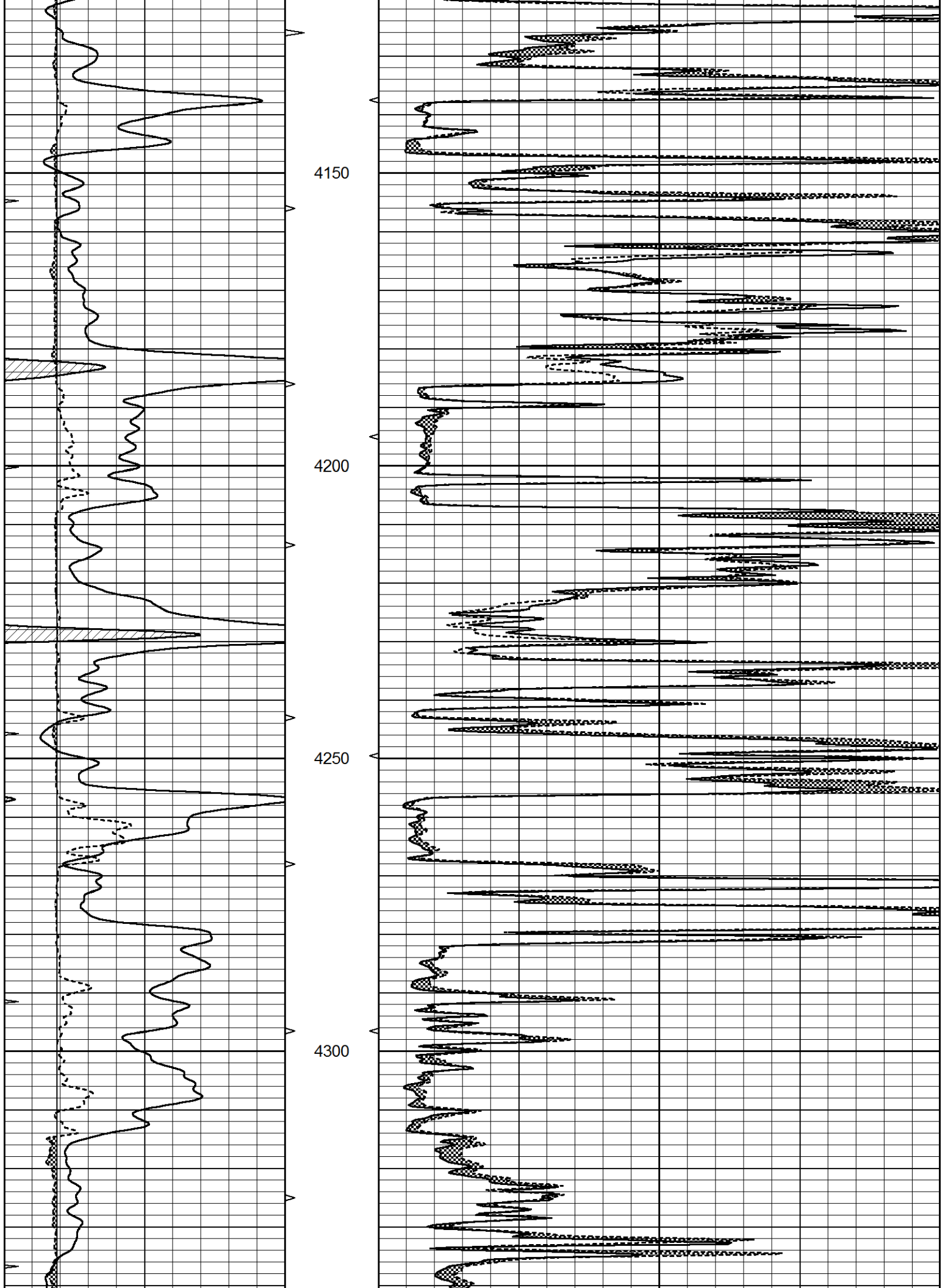
Database File 5611pe.db  
 Dataset Pathname pass6.1  
 Presentation Format \_micro  
 Dataset Creation Thu Aug 05 13:27:36 2021  
 Charted by Depth in Feet scaled 1:240

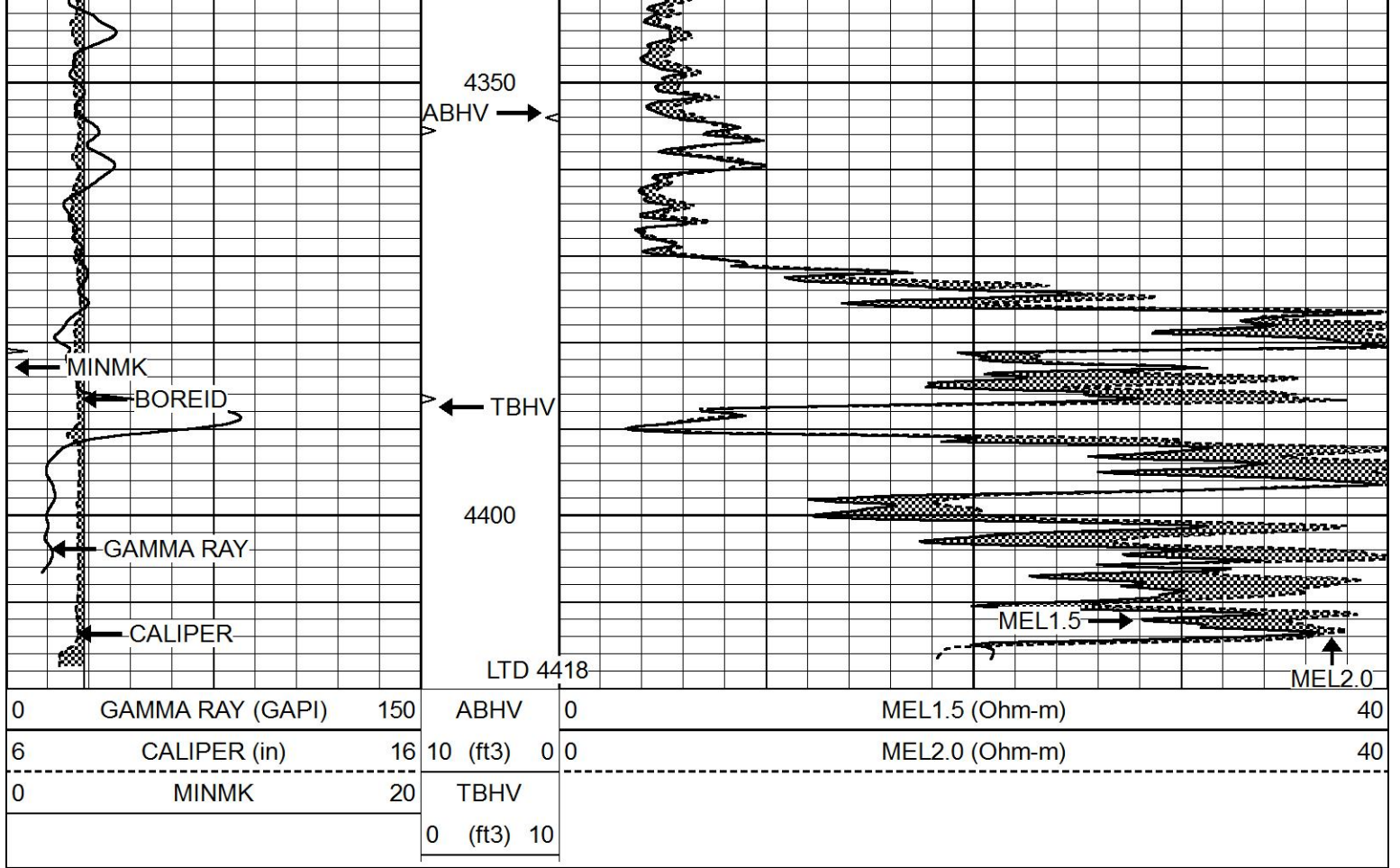
0	GAMMA RAY (GAPI)	150	ABHV	0	MEL1.5 (Ohm-m)	40
6	CALIPER (in)	16	10 (ft3)	0	MEL2.0 (Ohm-m)	40
0	MINMK	20	TBHV			
			0 (ft3)	10		







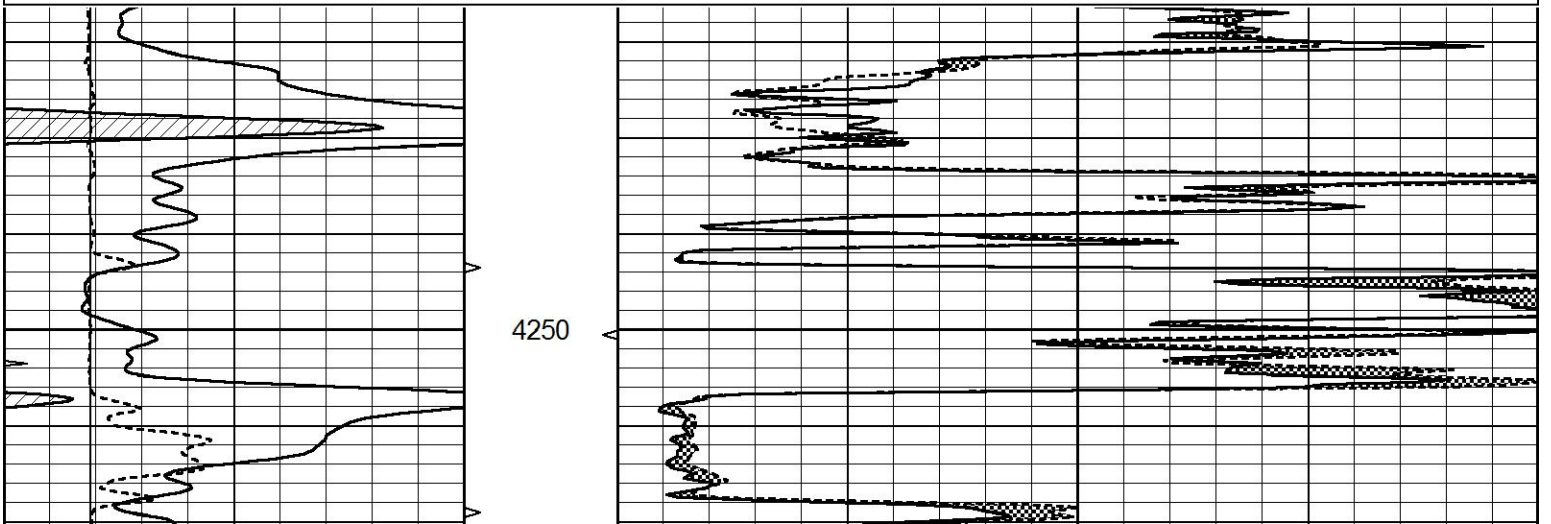


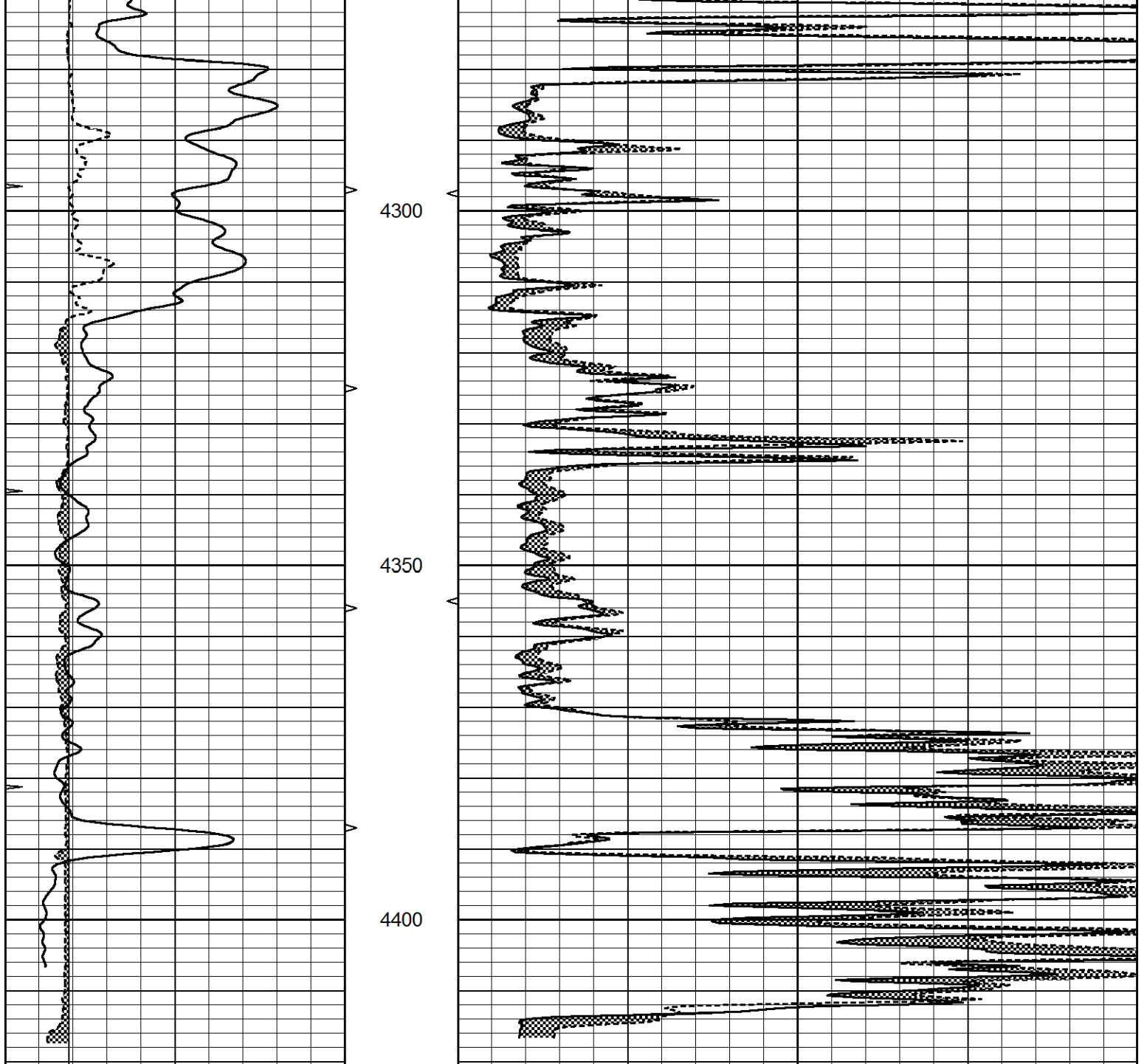


# REPEAT SECTION

Database File 5611pe.db  
 Dataset Pathname pass5.1  
 Presentation Format \_micro  
 Dataset Creation Thu Aug 05 13:10:30 2021  
 Charted by Depth in Feet scaled 1:240

0	GAMMA RAY (GAPI)	150	ABHV	0	MEL1.5 (Ohm-m)	40
6	CALIPER (in)	16	10 (ft3)	0	MEL2.0 (Ohm-m)	40
0	MINMK	20	TBHV			
			0 (ft3)	10		





0	GAMMA RAY (GAPI)	150	ABHV	0	MEL1.5 (Ohm-m)	40
6	CALIPER (in)	16	10 (ft3)	0	MEL2.0 (Ohm-m)	40
0	MINMK	20	TBHV			
			0 (ft3)	10		

Calibration Report

Database File 5611pe.db  
 Dataset Pathname pass5.1  
 Dataset Creation Thu Aug 05 13:10:30 2021

MICRO Calibration Report

Serial Number: Micro1  
 Tool Model: Probel  
 Performed: Mon Jun 28 04:02:18 2021

Caliper Calibration: Gain=2.815 Offset=4.552

References	Low Cal 8.500	High Cal 13.500
Readings	0.887	2.663
1.5" Calibration:	Gain=36.134	Offset=1.000
References	Low Cal 0.000	High Cal 20.000
Readings	0.004	0.832
2" Calibration:	Gain=38.000	Offset=1.200
References	Low Cal 0.000	High Cal 20.000
Readings	0.022	0.793
Gamma Ray Calibration Report		
Serial Number:	GR5	
Tool Model:	OPEN	
Performed:	Thu Jul 30 23:16:16 2020	
Calibrator Value:	1.0	GAPI
Background Reading:	0.0	cps
Calibrator Reading:	1.0	cps
Sensitivity:	0.6000	GAPI/cps