

LEETH EVALUATION

Company	TRIPLE CROWN OPERATING, LLC					
Well	HARTING #1-9					
Field	WILDCAT					
County	HODGEMAN State KANSAS					
Location	SEC 9	TWP 21S	RGE	21W		
Spot	3351FNL 20541FWL					
API Well Number	15-083-21991					
Permanent Datum	GROUND LEVEL			Elevation		
Log Measured From	K.B.			K.B.		
Drilling Measured From	KELLY BUSHING			D.F. G.L.		
Description	Zone 1	Zone 2	Zone 3	Zone 4	Zone 5	Zone 6
Date	09/15/21					
Top Parameter Depth	4300					
Bottom Parameter Depth	4375					
Bit Size	7.875					
BHT	120					
Rmf @ FT	0.16					
Rw @ FT	0.10					
Location	WICHITA					
Evaluation By	R. LEETH					
Recommended Perf / SPF						
Recommended Perf / SPF						

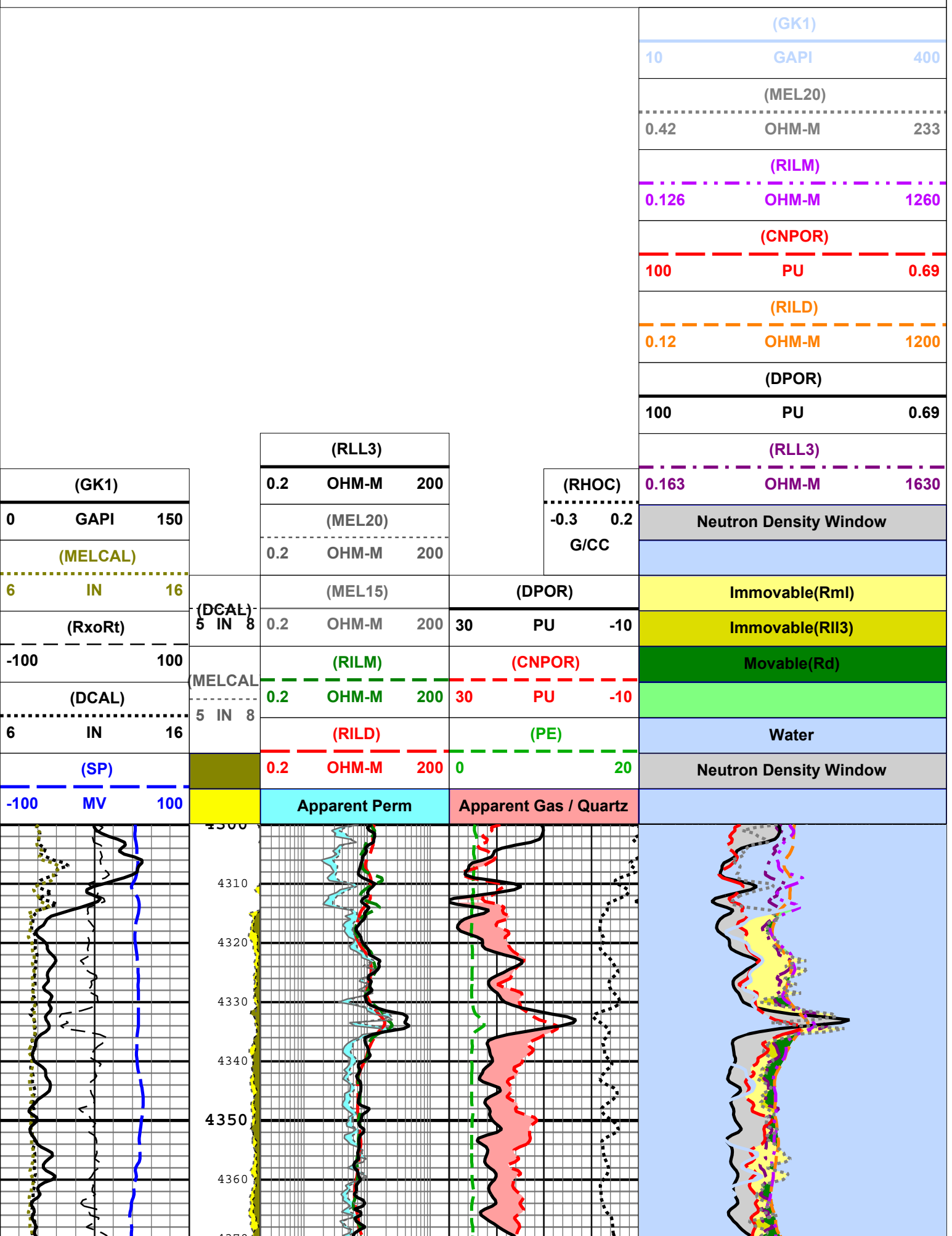
We do not guarantee results, nor make warranties either expressly or implied. Under no circumstances shall we be liable for damages relative to this evaluation.

LOG DATA

Name	Description
DEPTH.FT	depth
CNPOR.PU	Compensated Neutron porosity
DCAL.IN	Compensated Density caliper
DPOR.PU	Compensated Density porosity
GR.API	gamma ray
MEL15.OHM-M	1.5 inch Microinverse resistivity
MEL20.OHM-M	2 inch Micronormal resistivity
MELCAL.IN	Microlog caliper
PE.	Photoelectric Pffect
RHCC.G/CC	Compensated Density correction
RILD.OHM-M	Deep Induction resistivity
RILM.OHM-M	Medium Induction resistivity
RL3.OHM-M	Short Guard resistivity
RxoRt.	ratio of shallow resistivity to deep resistivity
SP.MV	spontaneous potential
SPOR.PU	Sonic porosity

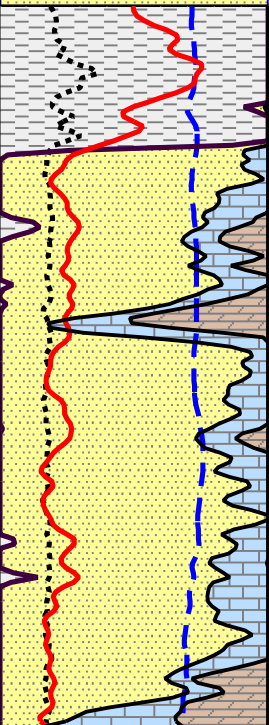
EVALUATION DATA

Name	Description
DEPTH.FT	depth
BIT.IN	bit size
BVWb.V/V	bulk volume water in matrix porosity system
BVWs.V/V	bulk volume water in secondary porosity system
BVWsgxo.V/V	bulk volume water in the flushed zone system
CALI.IN	caliper
Dh.G/CC	hydrocarbon density
DMAA.G/CC	apparent matrix density
DSRGIP.MMCFG	delta sum recoverable gas in place
DSROIP.BO	delta sum recoverable oil in place
DSUMQg.MCFGPD	delta sum of productive gas
DSUMQo.BOPD	delta sum of productive oil
DSUMQw.BWPD	delta sum of productive water
GR.API	gamma ray
Khb.MD	permeability to hydrocarbon from matrix porosity system
Khs.MD	permeability to hydrocarbon from secondary porosity system
ms.DEC	cementation exponent for secondary porosity system
OOM.DEC	ooidic flag
PSGC.V/V	gas corrected sonic porosity
PX.V/V	crossplot porosity
Rds.CHMM	calculated deep resistivity
SP.MV	spontaneous potential
SUMQg.MCFGPD	sum of productive gas
SUMQo.BOPD	sum of productive oil
SUMQw.BWPD	sum of productive water
SUMRGIP.MMCFG	sum of recoverable gas in place
SUMROIP.BO	sum of recoverable oil in place
Swb.V/V	water saturation in matrix porosity system
Sws.V/V	water saturation in secondary porosity system
Sxo.V/V	water saturation of the flushed zone
VSH.V/V	shale volume

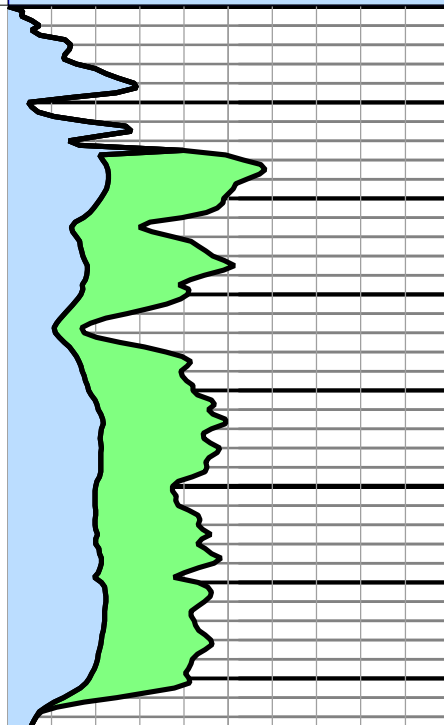


DEP	POR, %	Rt	Rw	m	SW, %
4316-19	24.00	6.50	0.12	1.85	51
4320-22	20.50	8.00	0.12	1.85	53
4326-28	21.00	10.00	0.12	1.85	46
4366	19.00	5.50	0.12	1.85	69

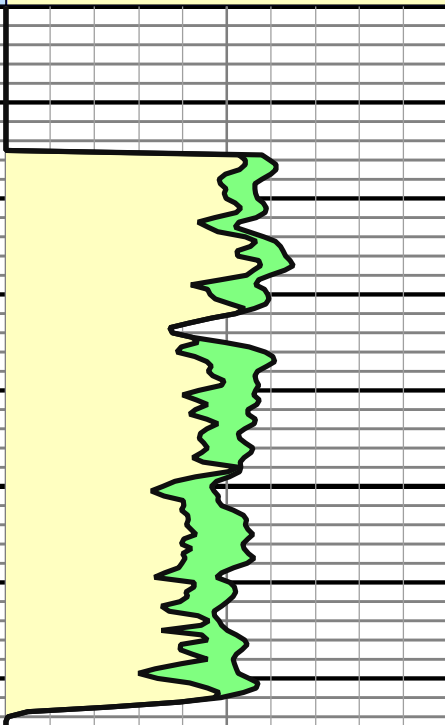
(QUARTZp)		
0	V/V	1
(DOLOp)		
0	V/V	1
(CALCp)		
0	V/V	1
(ANHYp)		
0	V/V	1
(GR)		
0	API	150
(VSH)		
0	V/V	1
(SP)		
-100	MV	100
(CALI)		
6	IN	16



(BVWsgxo)		
0	V/V	0.4
(BVWs)		
0	V/V	0.4
(PX)		
1	V/V	0
(Sws)		
0	V/V	0.4



(Sxo)		
(PX)		
1	V/V	0
(Sws)		
0	V/V	0



(Khb)		
0.1	MD	100

