



**GAMMA RAY
NEUTRON
COMPLETION LOG**

Company LAYMON OIL II, LLC
Well CARL #1-21
Field VERNON
County WOODSON
State KS

Location: 165° FSU, 3135' FEL
S.W. 5 SE 5 SW
AP# #: 15-207-28906-00-00

Permanent Datum SEC 5 TWP 24 RGE 16
Log Measured From GL
Drilling Measured From GL
Elevation 1151
K.B. Elevation
D.F. 1151

Date 10-5-21
Run Number 1 NW
Depth Diller 1141.8

Top Log Interval 0
Bottom Logged Interval 1141.8
Fluid Level FULL

Type Fluid WATER
Production Casing 2 7/8" @ TD
Max. Recorded Temp. SURF
Estimated Cement Top
Calculated Cement Top

Amount & Type Annuit.
Drilling Contractor
Equipment Number 109
Location THAO TRAHANI

Recorded By DEREK SHAW
Witnessed By

<<< Fold Here >>>

All interpretations are opinions based on inferences from electrical or other measurements and we cannot and do not guarantee the accuracy or correctness of any interpretation, and we shall not, except in the case of gross or willful negligence on our part, be liable or responsible for any loss, costs, damages, or expenses incurred or sustained by anyone resulting from any interpretation made by any of our officers, agents or employees. These interpretations are also subject to our general terms and conditions set out in our current Price Schedule.

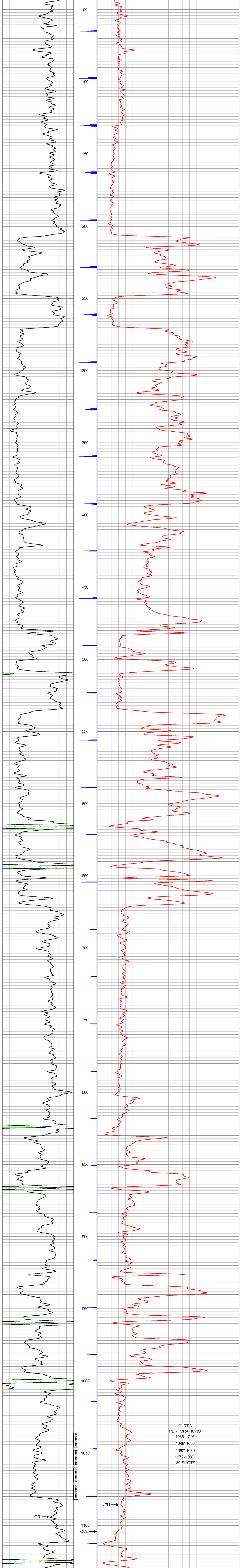
Comments

Sensor	Offset (ft)	Schematic	Description	Len (ft)	OD (in)	Wt (lb)
GR	7.59		GR-TITAN 169 (TIT169_001) Titan 1 11/16" Gamma Ray	4.75	1.69	20.00
CCL	5.05		CCL-TITAN 169 (TIT169) Titan 1 11/16" Logging CCL	1.83	1.69	7.50
NEU	0.63		NEU-TITAN (TIT801) TITAN 1 11/16" Neutron	4.33	1.69	25.00

Dataset: carl #1-21.db: field/well/run1/pass1
Total Length: 10.92 ft
Total Weight: 52.50 lb
O.D.: 1.69 in

Database File: carl #1-21.db
Dataset Pathname: pass1
Presentation Format: gr-n-ccl
Dataset Creation: Tue Oct 05 09:21:33 2021 by Log Std Casedhole 09061
Charted by: Depth in Feet scaled 1.240

150 gr 300 3 CCL.05 200 NEU (cps) 2000
0 GR 150



150 gr 300 3 CCL.05 200 NEU (cps) 2000
0 GR 150

