



MIDWEST WIRELINE

# MICRORESISTIVITY LOG

Company Arcadian Resources LLC  
 Well Liam #3  
 Field Unnamed  
 County Thomas  
 State Kansas

Company Arcadian Resources LLC  
 Well Liam #3  
 Field Unnamed  
 County Thomas State Kansas

Location: API #: 15-193-21098-00-00  
 750 FSL & 1260 FWL  
 SEC 20 TWP 8S RGE 32W  
 Permanent Datum Ground Level Elevation 3111  
 Log Measured From Kelly Bushing  
 Drilling Measured From Kelly Bushing  
 Other Services  
 CNL/CDL  
 DIL  
 Elevation  
 K.B. 3116  
 D.F.  
 G.L. 3111

Date	11/15/2021	11/17/2021	
Run Number	One	One	
Depth Driller	4153	4724	
Depth Logger	4154	4726	
Bottom Logged Interval	4153	4725	
Top Log Interval	3400	4150	
Casing Driller	8.625 @ 253		
Casing Logger			
Bit Size	7.875		
Type Fluid in Hole	Chemical		
Salinity, ppm CL	600		
Density / Viscosity	9.1 48		
pH / Fluid Loss	10.0 8.0		
Source of Sample	FLOWLINE		
Rm @ Meas. Temp	1.1 @ 68		
Rmt @ Meas. Temp	.83 @ 68		
Rmc @ Meas. Temp	1.49 @ 68		
Source of Rmf / Rmc	CHARTS		
Rm @ BHT	.64 @ 118		
Operating Rig Time	2 Hours	3 Hours	
Max Rec. Temp. F	118		
Equipment Number	P-108		
Location	HAYS		
Recorded By	J. Henrickson		
Witnessed By	Sean Deenihan	Jim Deverman	

<<< Fold Here >>>

All interpretations are opinions based on inferences from electrical or other measurements and Midwest Wireline LLC cannot and does not guarantee the accuracy or correctness of any interpretation, and Midwest Wireline LLC will not be liable or responsible for any loss, costs, damages, or expenses incurred or sustained by anyone resulting from any interpretation made by any of our officers, agents or employees.

### Comments

N/A DENOTES NOT AVAILABLE OR NON-APPLICABLE.

Mingo Exit I70  
 1 East, 4 1/4 North, East Into

Log Measured From: Kelly Bushing 5 Ft. Above Permanent Datum

THANK YOU FOR USING MIDWEST WIRELINE LLC  
 785-625-3858

### Your Midwest Wireline Crew

Engineer: J. Henrickson  
 Operator:  
 Operator:  
 Operator:

### This Log Record Was Witnessed By

Primary Witness: Sean Deenihan  
 Secondary Witness: Jim Deverman  
 Secondary Witness:  
 Secondary Witness:

# Log Variables


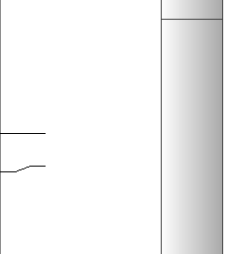
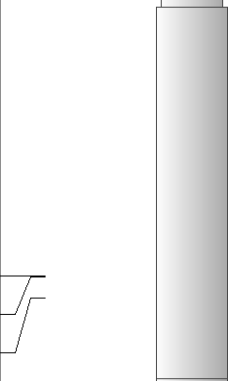
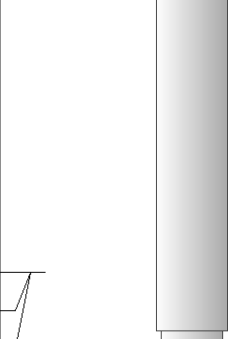

DatabaseC:\ProgramData\Warrior\Data\arcadian\_liam\_3.db  
Dataset field/well/stackml/pass5.1/\_vars\_

## Top - 4110.00 ft

A	BOREID in	BOTTEMP degF	CASEOD in	CASETHCK in	FLUIDDEN g/cc	M	MATRXDEN g/cc
1	7.875	118	5.5	0	1	2	2.71
NPORSEL	PERFS	SNDERR mmho/m	SNDERRM mmho/m	SPSHIFT mV	SRFTEMP degF	SZCOR	TDEPTH ft
Limestone	0	0	0	360	51	Off	4154

## 4110.00 ft - Bottom

A	BOREID in	BOTTEMP degF	CASEOD in	CASETHCK in	FLUIDDEN g/cc	M	MATRXDEN g/cc
1	7.875	118	5.5	0	1	2	2.71
NPORSEL	PERFS	SNDERR mmho/m	SNDERRM mmho/m	SPSHIFT mV	SRFTEMP degF	SZCOR	TDEPTH ft
Limestone	0	0	0	360	51	Off	4154

Sensor	Offset (ft)	Schematic	Description	Length (ft)	O.D. (in)	Weight (lb)
GR	40.58		GR-M&W (89-M&W)	3.00	3.50	50.00
CNLSC CNSSC	37.48 36.73		CNT-M&W (10-PSI)	5.50	3.50	100.00
LSD DCAL SSD	28.43 28.42 27.93		CDL-M&W (915-956)	8.50	4.00	250.00
MCAL MI MN	19.83 19.83 19.83		ML-PSI STKBL ML (PSI-02) Stackable Microlog Tools	7.58	4.00	65.00
RLL3F RLL3	15.80 15.80					

CILD 8.00

CILM 4.70

SP 0.20

DIL-PSI HIGH TEMP (959-1032)

18.50

3.50

220.00

Dataset: arcadian\_liam\_3.db: field/well/stackml/pass5.1  
 Total length: 43.08 ft  
 Total weight: 685.00 lb  
 O.D.: 4.00 in



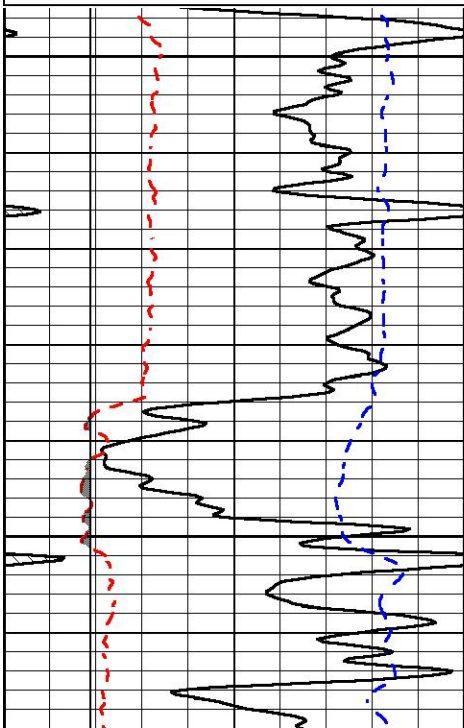
# DETAIL SECTION

## MAIN PASS

Database File arcadian\_liam\_3.db  
 Dataset Pathname stackml/pass4.1  
 Presentation Format \_micro  
 Dataset Creation Mon Nov 15 03:10:23 2021  
 Charted by Depth in Feet scaled 1:240

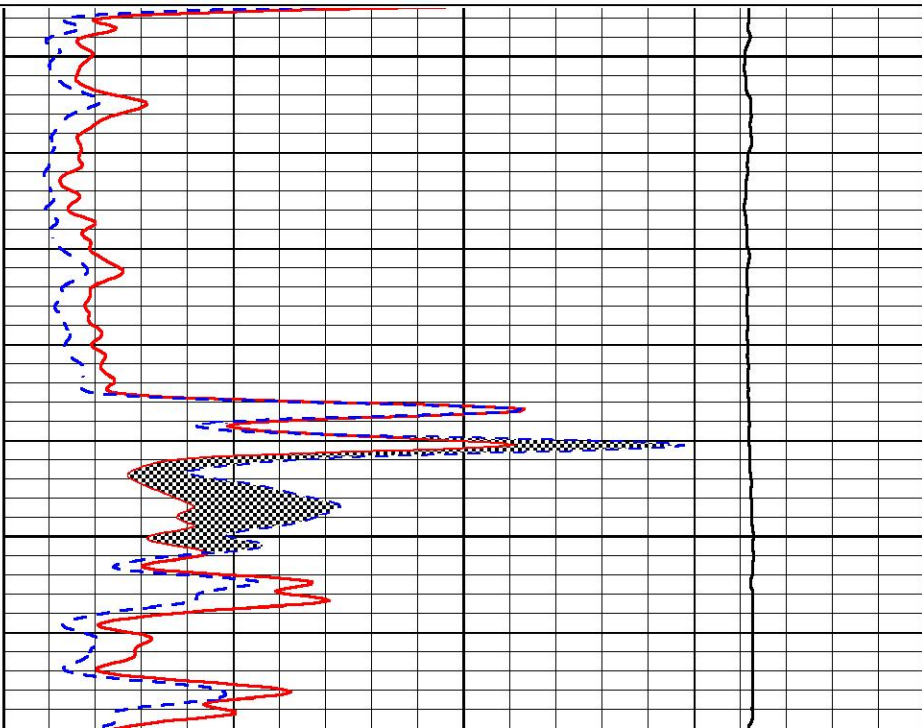
0	Gamma Ray (GAPI)	150
6	Caliper (in)	16
-200	SP (mV)	0

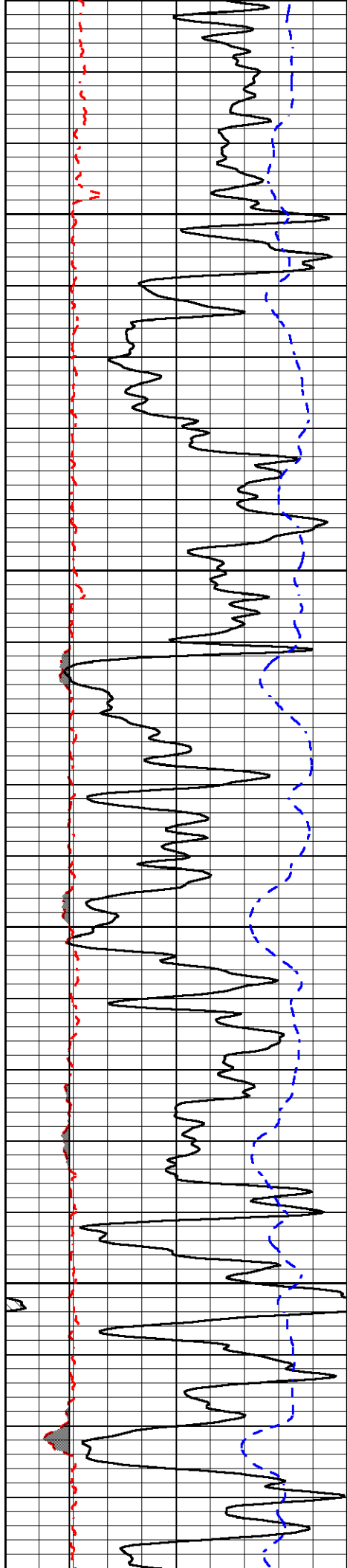
0	Micro Inverse 1 X 1 (Ohm-m)	40
0	Micro Normal 2" (Ohm-m)	40
10000	Line Weight (lb)	0



3400

3450



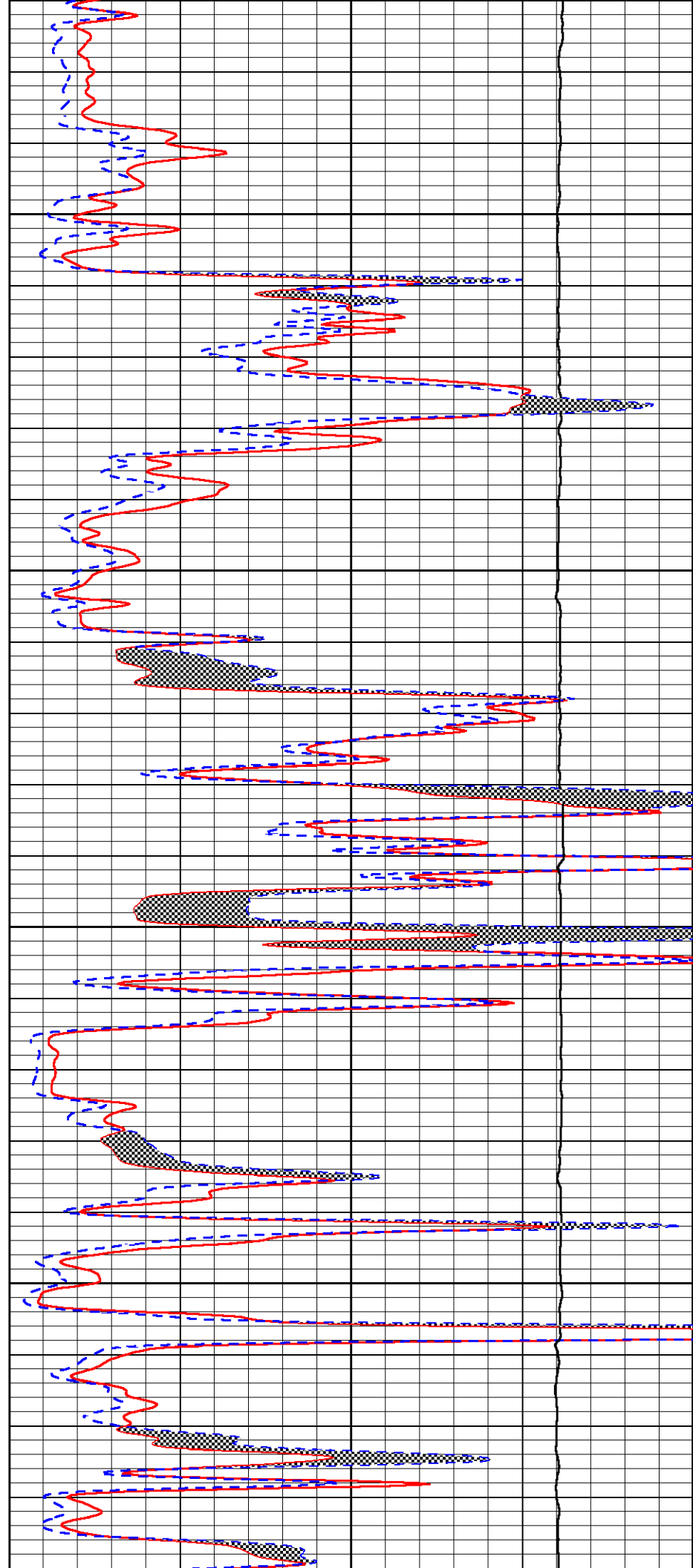


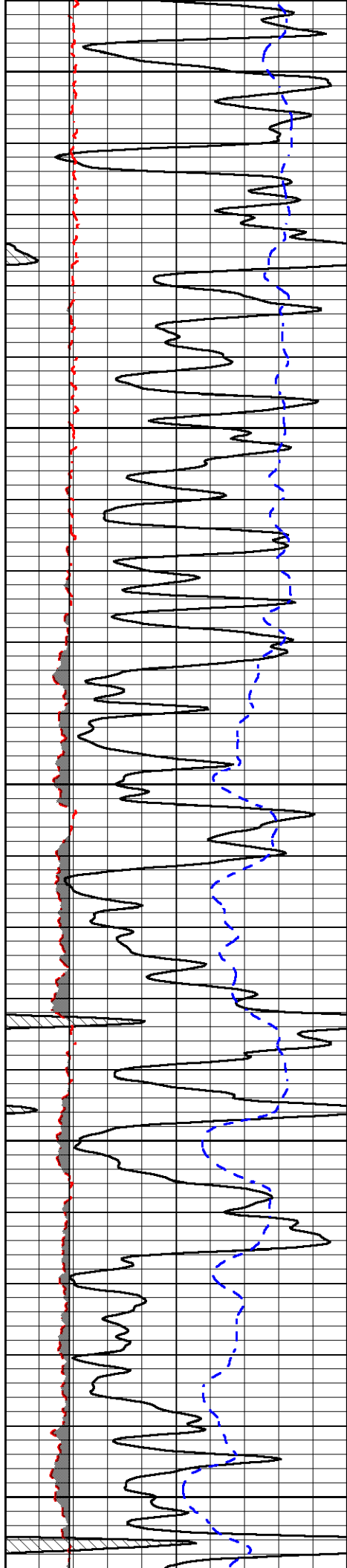
3500

3550

3600

3650





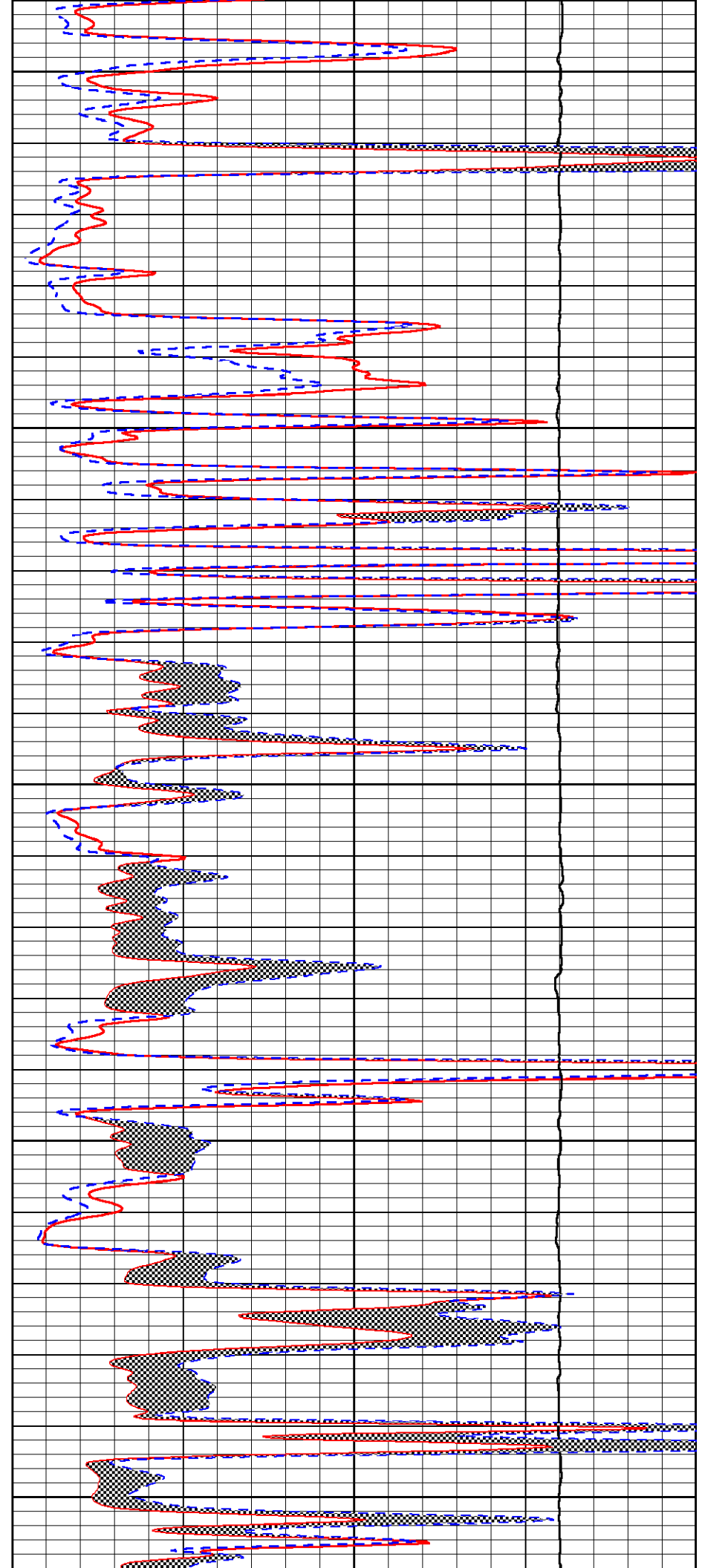
3700

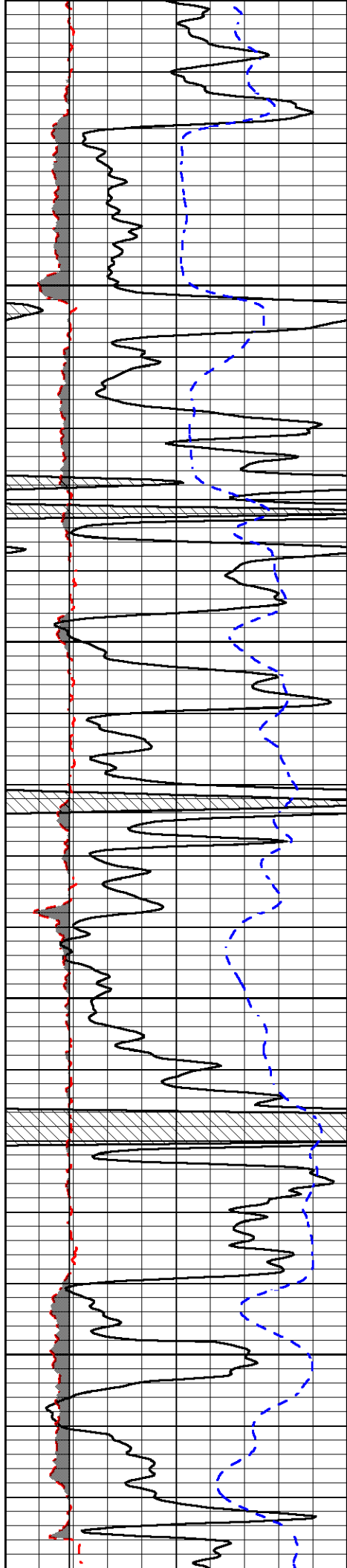
3750

3800

3850

3900



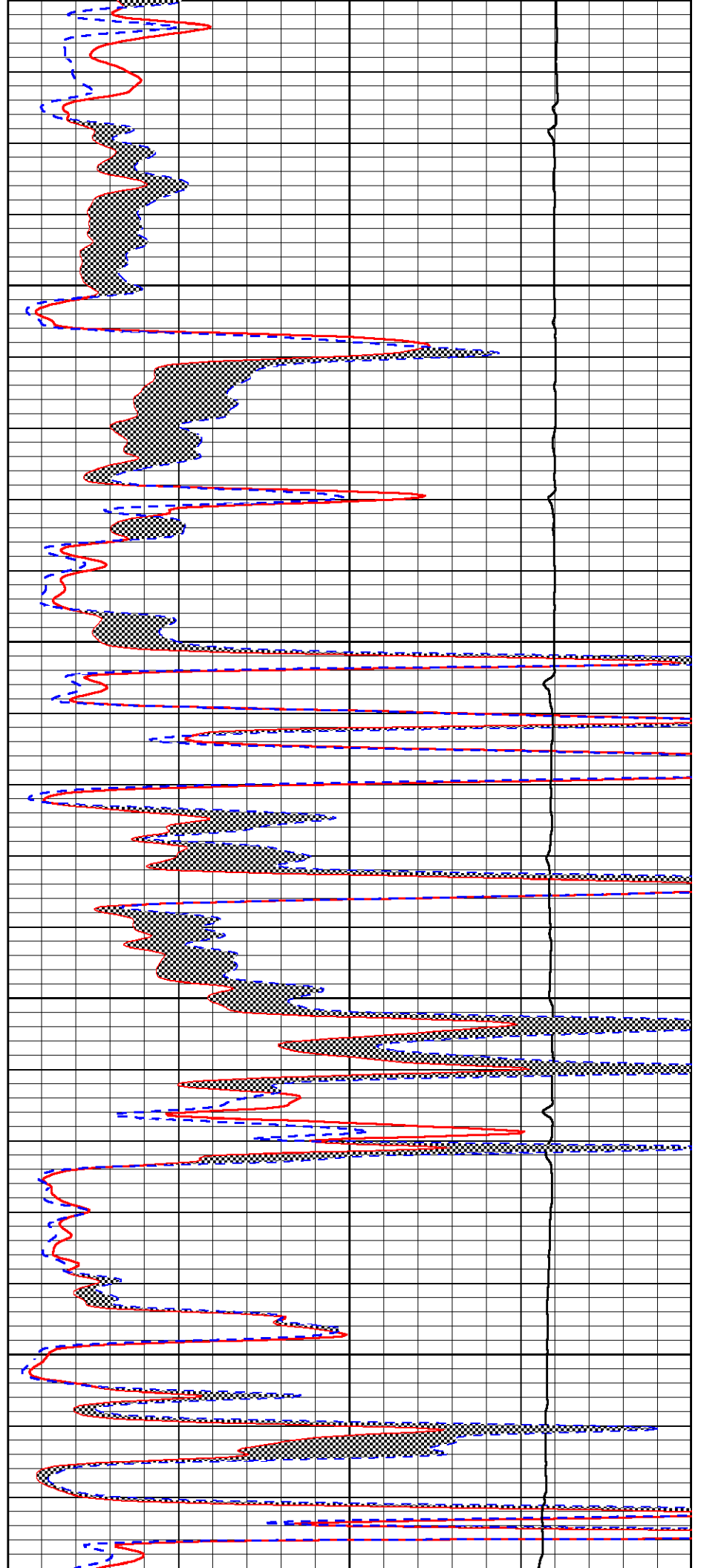


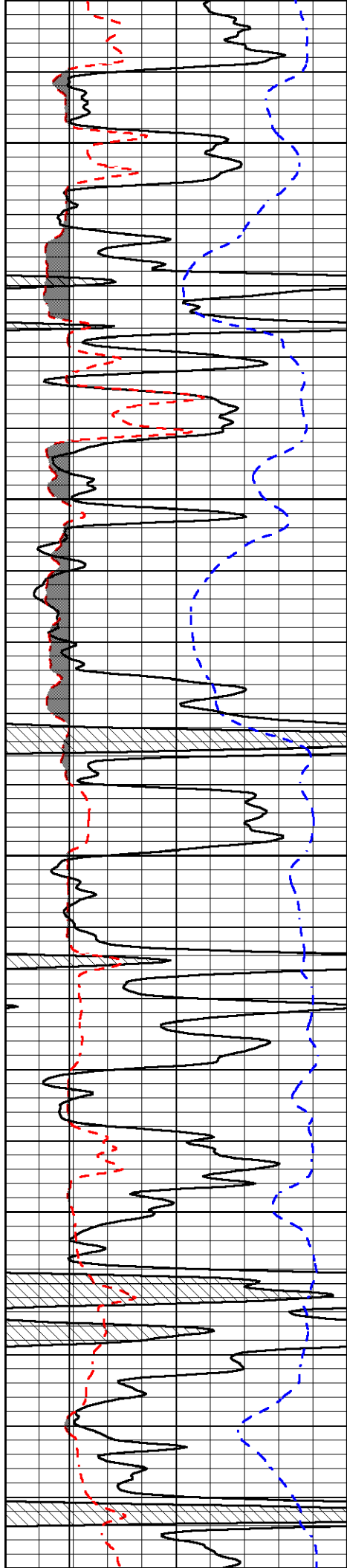
3950

4000

4050

4100





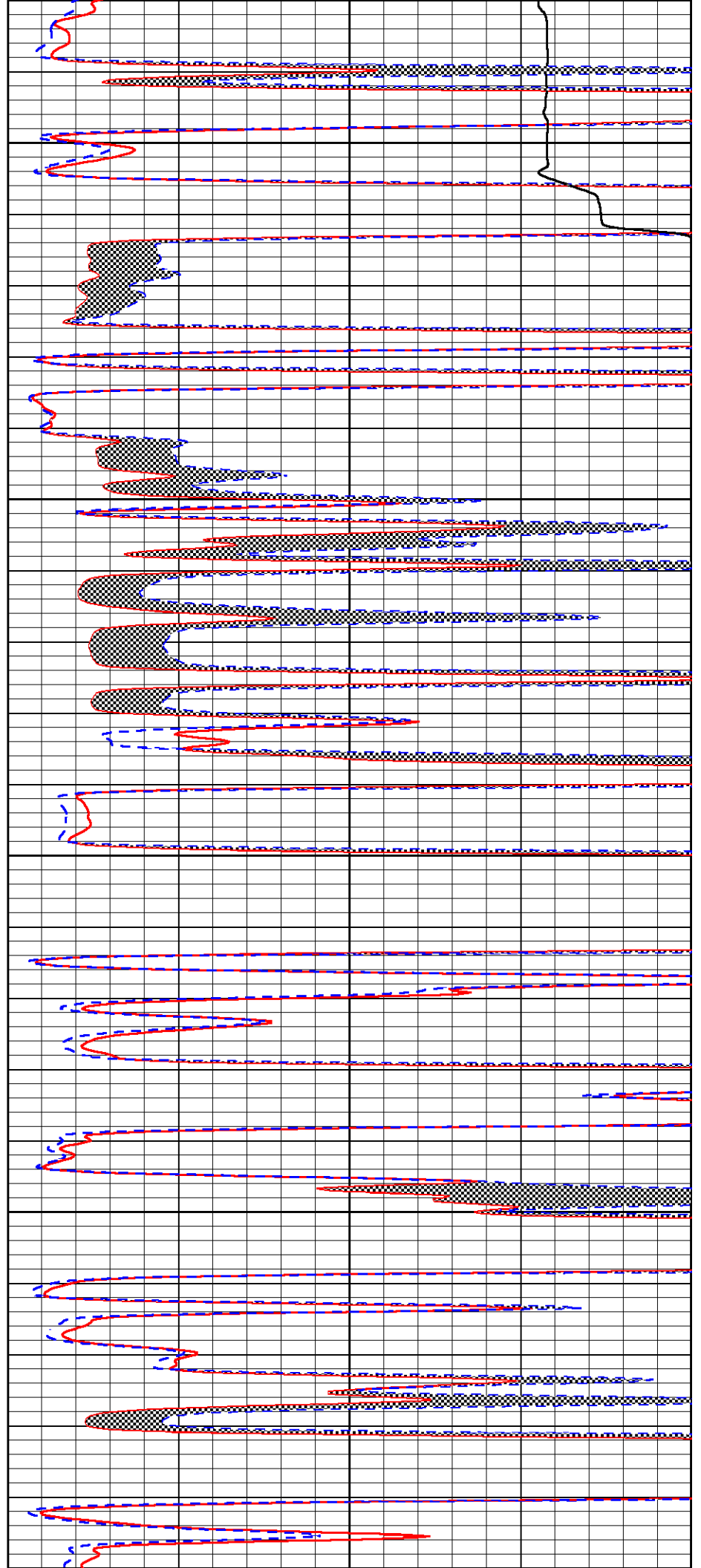
4150

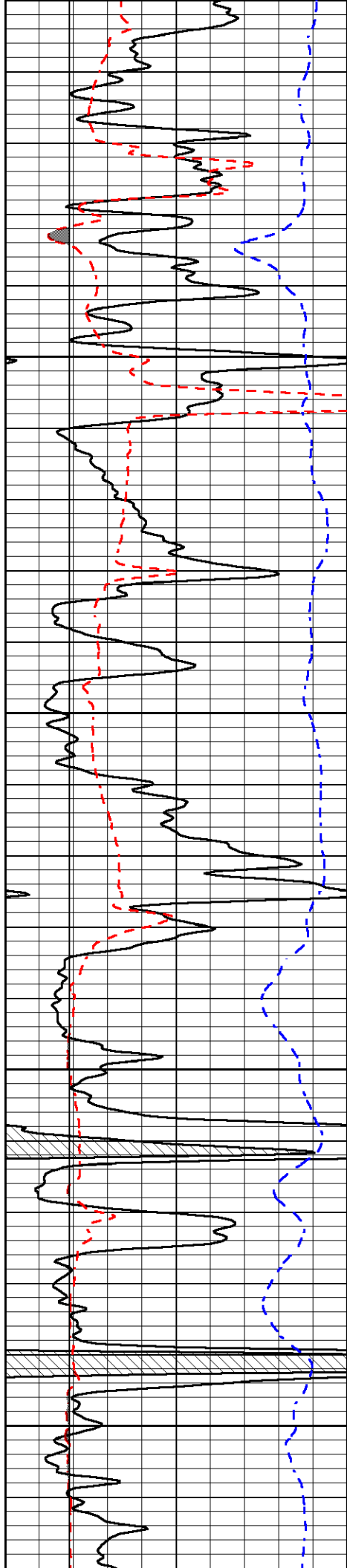
4200

4250

4300

4350





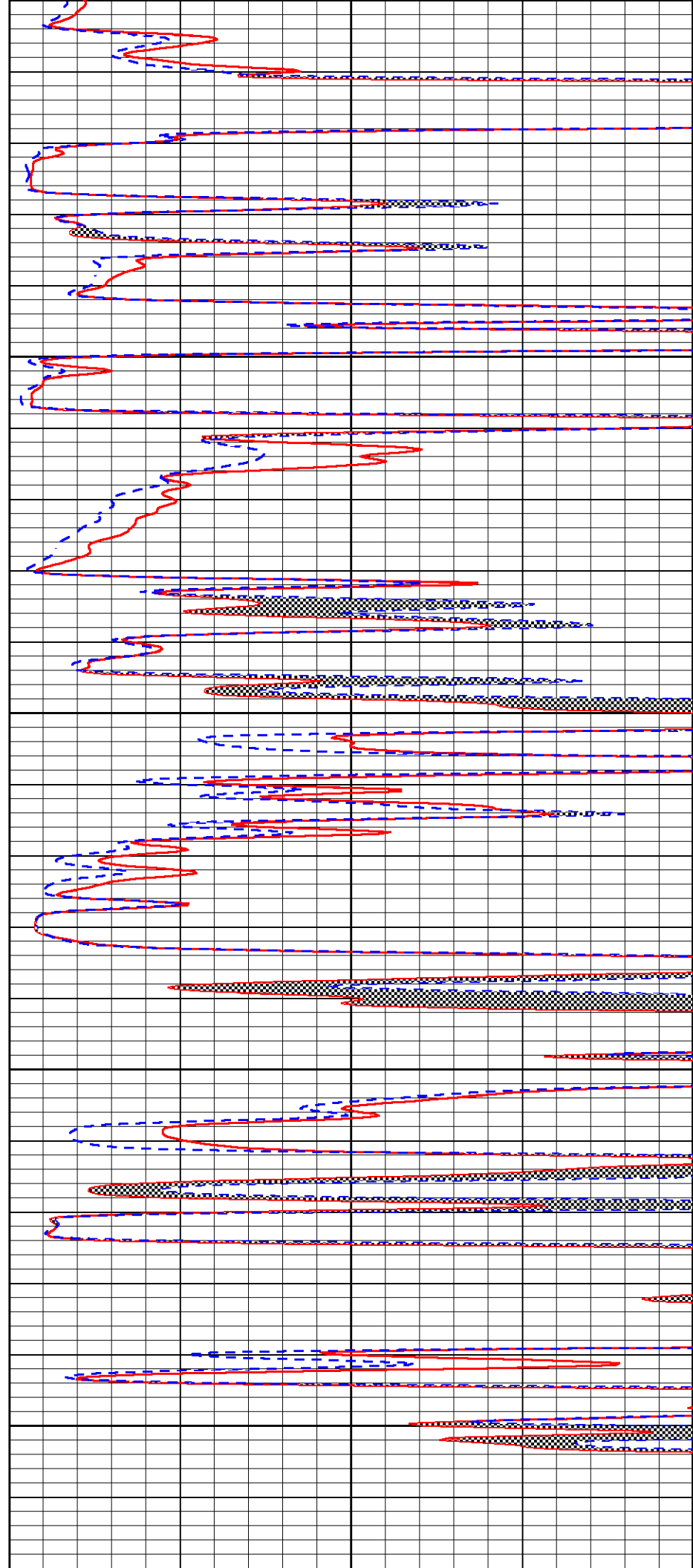
4500

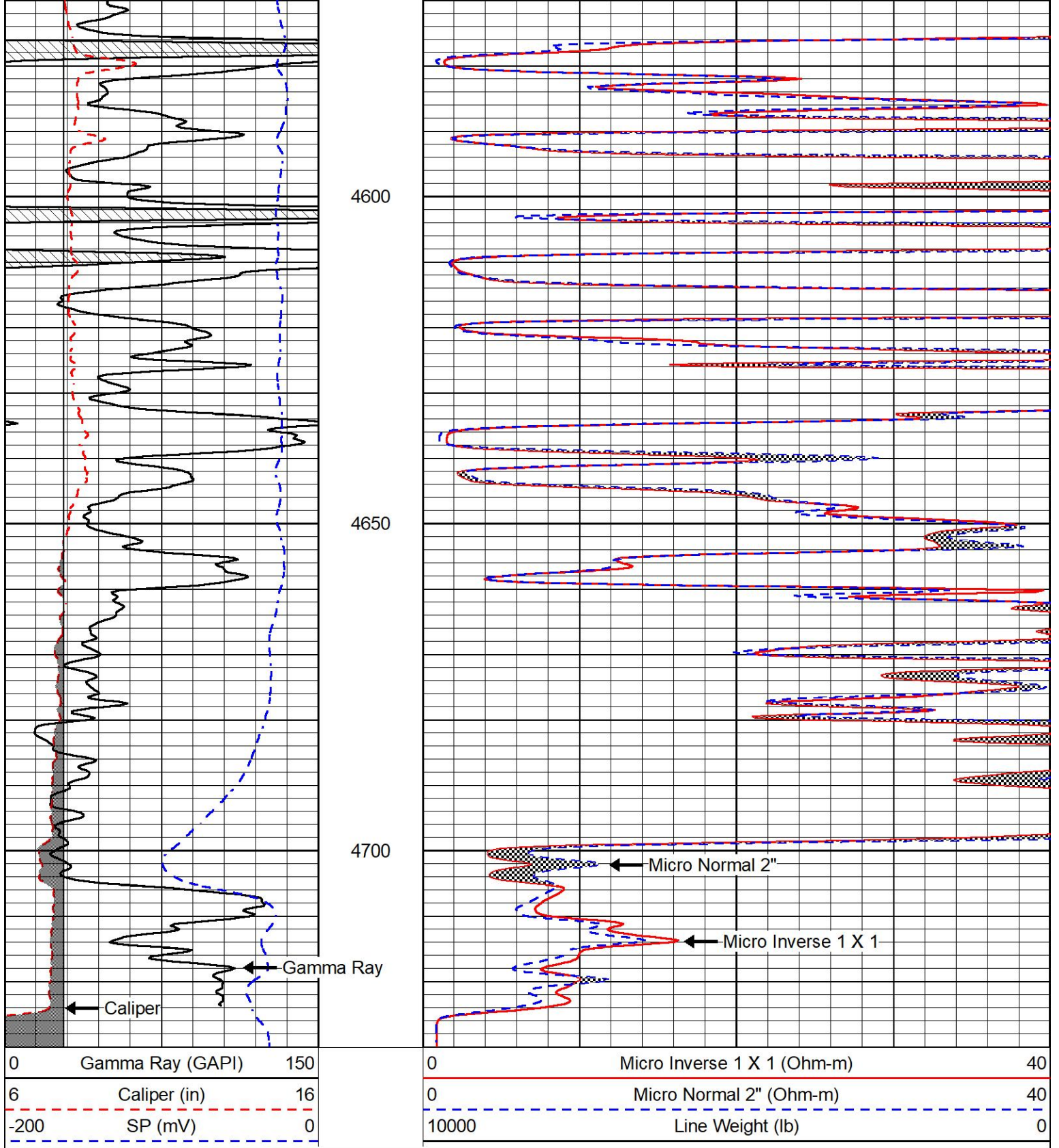
4400

450

4500

4550





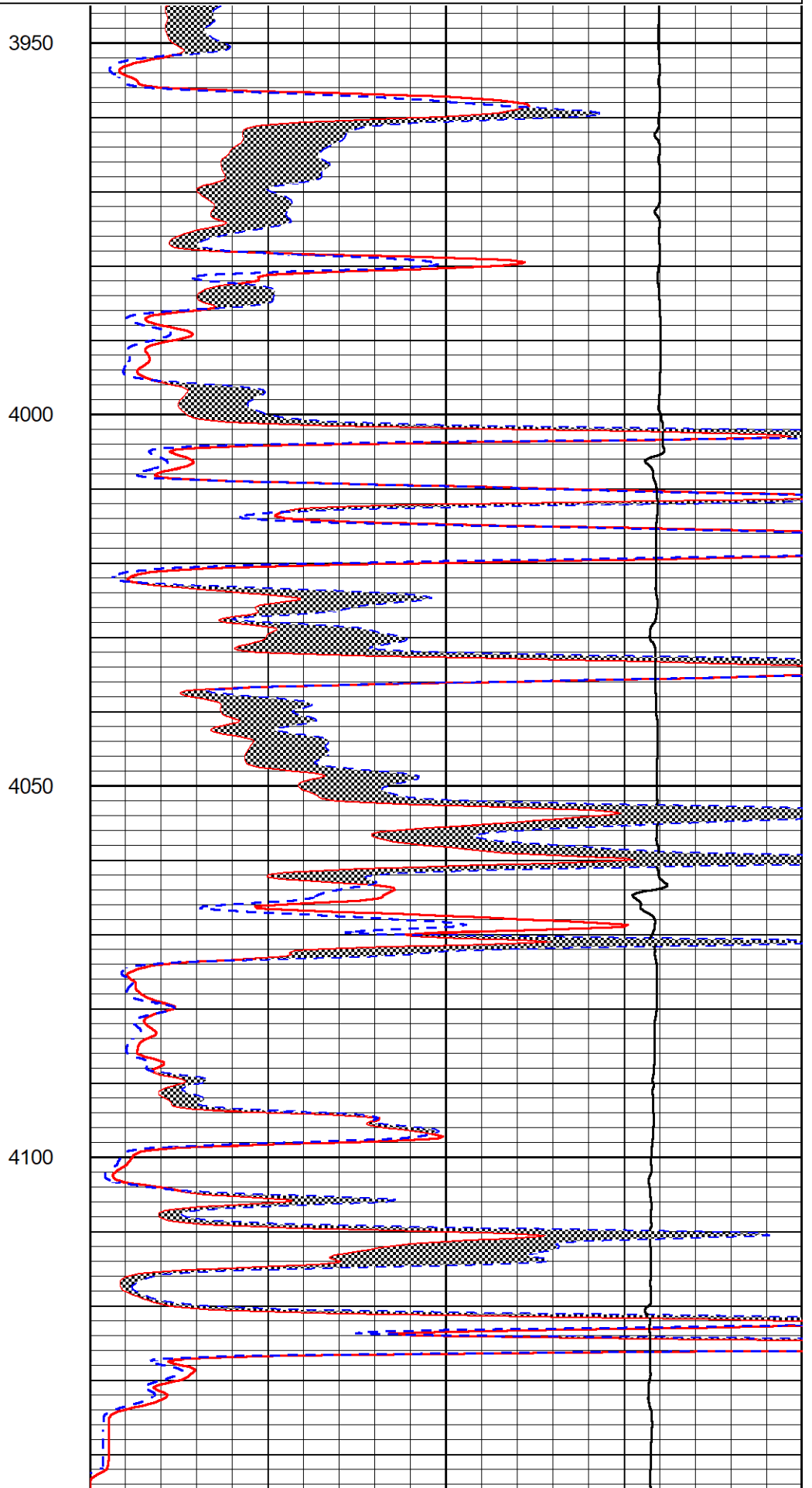
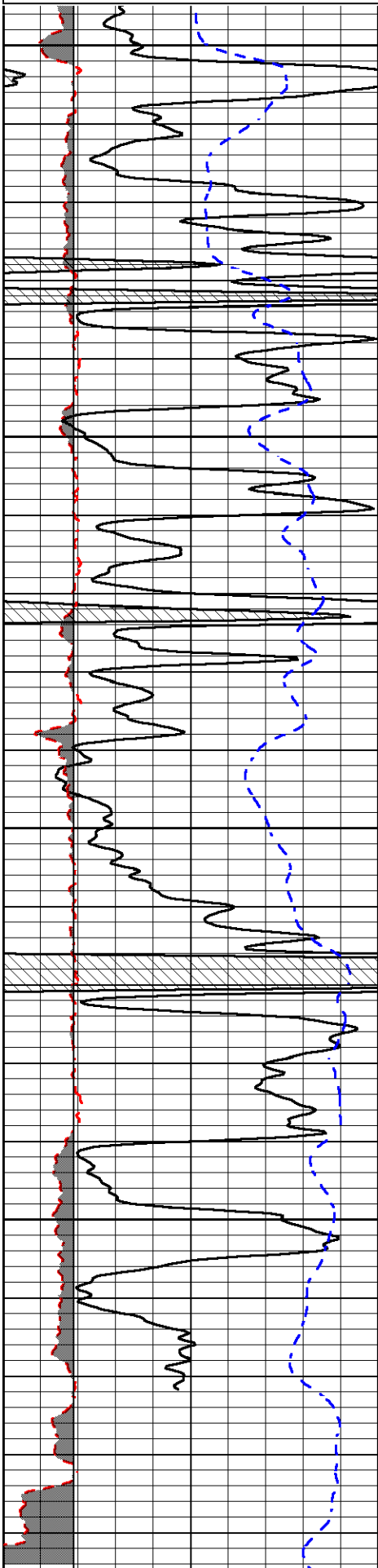
## REPEAT SECTION

REPEAT PASS

Database File arcadian\_liam\_3.db  
 Dataset Pathname stackml/pass2.1  
 Presentation Format \_micro  
 Dataset Creation Mon Nov 15 03:09:05 2021  
 Charted by Depth in Feet scaled 1:240

0	Gamma Ray (GAPI)	150
6	Caliper (in)	16
-200	SP (mV)	0

0	Micro Inverse 1 X 1 (Ohm-m)	40
0	Micro Normal 2" (Ohm-m)	40
10000	Line Weight (lb)	0



3950

4000

4050

4100

