



MIDWEST WIRELINE

# DUAL INDUCTION LOG

Company Arcadian Resources LLC  
 Well Liam #3  
 Field Unnamed  
 County Thomas  
 State Kansas

Company Arcadian Resources LLC  
 Well Liam #3  
 Field Unnamed  
 County Thomas State Kansas

Location: API #: 15-193-21098-00-00  
 750 FSL & 1260 FWL  
 SEC 20 TWP 8S RGE 32W  
 Permanent Datum Ground Level Elevation 3111  
 Log Measured From Kelly Bushing  
 Drilling Measured From Kelly Bushing  
 Other Services  
 CNL/CDL  
 MEL  
 Elevation  
 K.B. 3116  
 D.F.  
 G.L. 3111

Date	11/15/2021	11/17/2021
Run Number	One	Two
Depth Driller	4153	4724
Depth Logger	4154	4726
Bottom Logged Interval	4153	4725
Top Log Interval	250	4150
Casing Driller	8.625 @ 253	
Casing Logger	26'	
Bit Size	7.875	
Type Fluid in Hole	Chemical	
Salinity, ppm CL	600	
Density / Viscosity	9.1 48	
pH / Fluid Loss	10.0 8.0	
Source of Sample	FLOWLINE	
Rm @ Meas. Temp	1.1 @ 68	
Rmt @ Meas. Temp	.83 @ 68	
Rmc @ Meas. Temp	1.49 @ 68	
Source of Rmf / Rmc	CHARTS	
Rm @ BHT	.64 @ 118	
Operating Rig Time	2 Hours	3 Hours
Max Rec. Temp. F	118	
Equipment Number	P-108	
Location	HAYS	
Recorded By	J. Henrickson	
Witnessed By	Sean Deenihan	Jim Deverman

<<< Fold Here >>>

All interpretations are opinions based on inferences from electrical or other measurements and Midwest Wireline LLC cannot and does not guarantee the accuracy or correctness of any interpretation, and Midwest Wireline LLC will not be liable or responsible for any loss, costs, damages, or expenses incurred or sustained by anyone resulting from any interpretation made by any of our officers, agents or employees.

### Comments

N/A DENOTES NOT AVAILABLE OR NON-APPLICABLE.

Mingo Exit I70  
 1 East, 4 1/4 North, East Into

Log Measured From: Kelly Bushing 5 Ft. Above Permanent Datum

THANK YOU FOR USING MIDWEST WIRELINE LLC  
 785-625-3858

### Your Midwest Wireline Crew

Engineer: J. Henrickson  
 Operator:  
 Operator:  
 Operator:

### This Log Record Was Witnessed By

Primary Witness: Sean Deenihan  
 Secondary Witness: Jim Deverman  
 Secondary Witness:  
 Secondary Witness:

# Log Variables


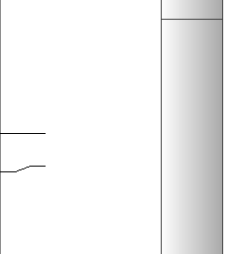
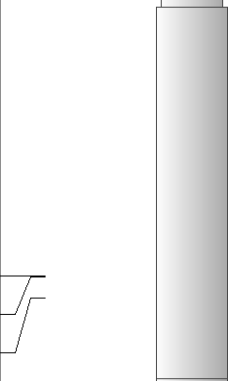
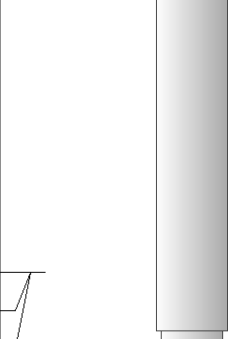

DatabaseC:\ProgramData\Warrior\Data\arcadian\_liam\_3.db  
Dataset field/well/stackml/pass5.1/\_vars\_

## Top - 4110.00 ft

A	BOREID in	BOTTEMP degF	CASEOD in	CASETHCK in	FLUIDDEN g/cc	M	MATRXDEN g/cc
1	7.875	118	5.5	0	1	2	2.71
NPORSEL	PERFS	SNDERR mmho/m	SNDERRM mmho/m	SPSHIFT mV	SRFTEMP degF	SZCOR	TDEPTH ft
Limestone	0	0	0	360	51	Off	4154

## 4110.00 ft - Bottom

A	BOREID in	BOTTEMP degF	CASEOD in	CASETHCK in	FLUIDDEN g/cc	M	MATRXDEN g/cc
1	7.875	118	5.5	0	1	2	2.71
NPORSEL	PERFS	SNDERR mmho/m	SNDERRM mmho/m	SPSHIFT mV	SRFTEMP degF	SZCOR	TDEPTH ft
Limestone	0	0	0	360	51	Off	4154

Sensor	Offset (ft)	Schematic	Description	Length (ft)	O.D. (in)	Weight (lb)
GR	40.58		GR-M&W (89-M&W)	3.00	3.50	50.00
CNLSC CNSSC	37.48 36.73		CNT-M&W (10-PSI)	5.50	3.50	100.00
LSD DCAL SSD	28.43 28.42 27.93		CDL-M&W (915-956)	8.50	4.00	250.00
MCAL MI MN	19.83 19.83 19.83		ML-PSI STKBL ML (PSI-02) Stackable Microlog Tools	7.58	4.00	65.00
RLL3F RLL3	15.80 15.80					

CILD 8.00

CILM 4.70

SP 0.20

DIL-PSI HIGH TEMP (959-1032)

18.50

3.50

220.00

Dataset: arcadian\_liam\_3.db: field/well/stackml/pass5.1  
 Total length: 43.08 ft  
 Total weight: 685.00 lb  
 O.D.: 4.00 in

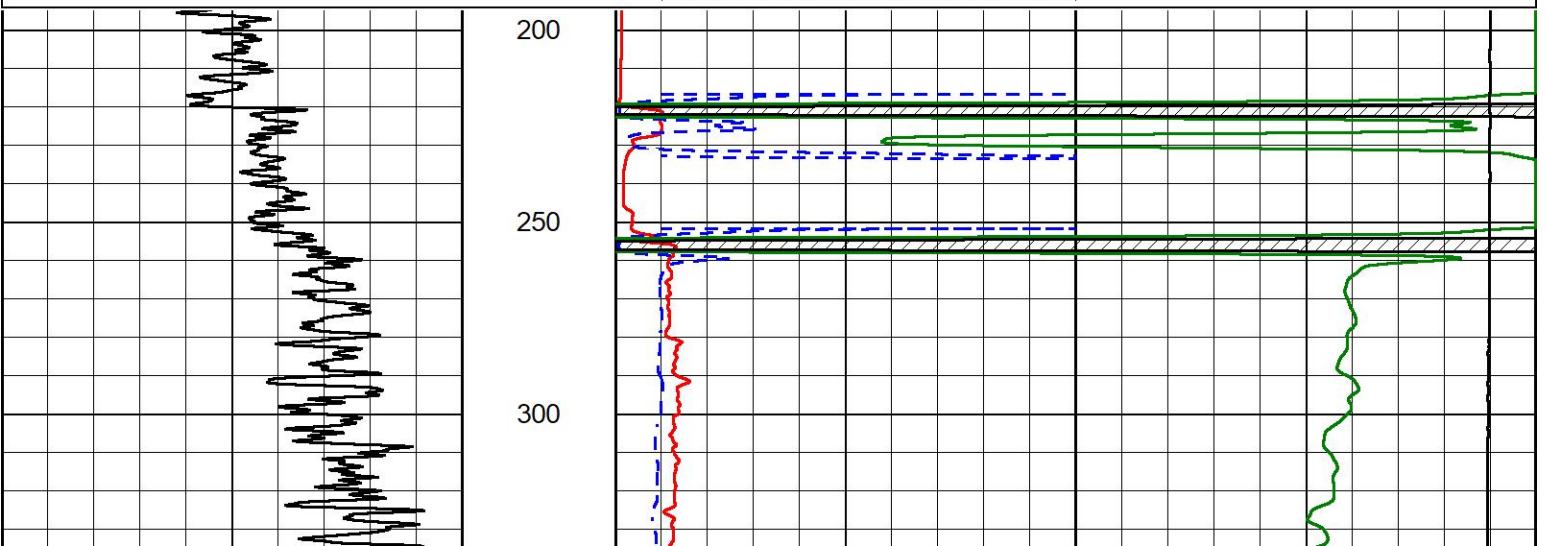


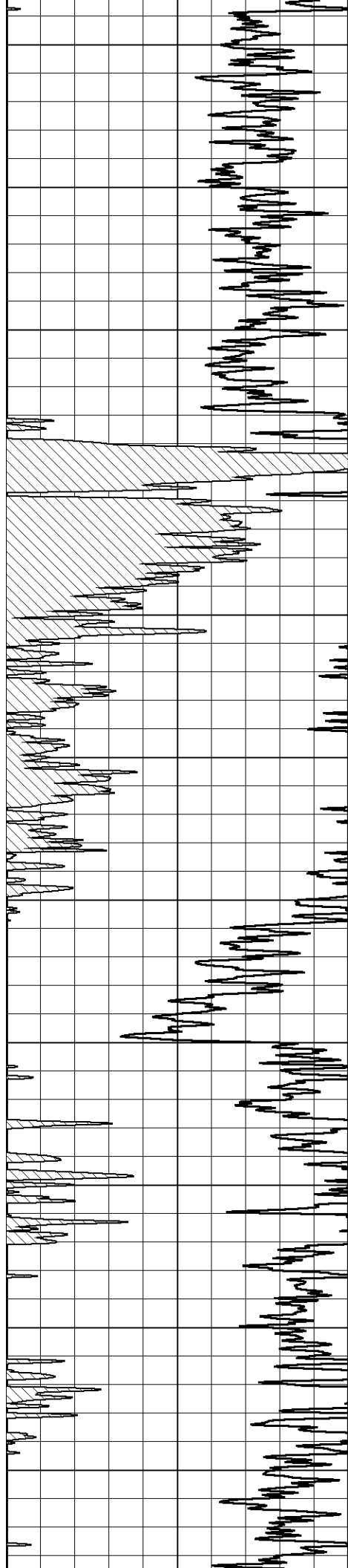
## 2" SCALE RESISTIVITY

### MAIN PASS

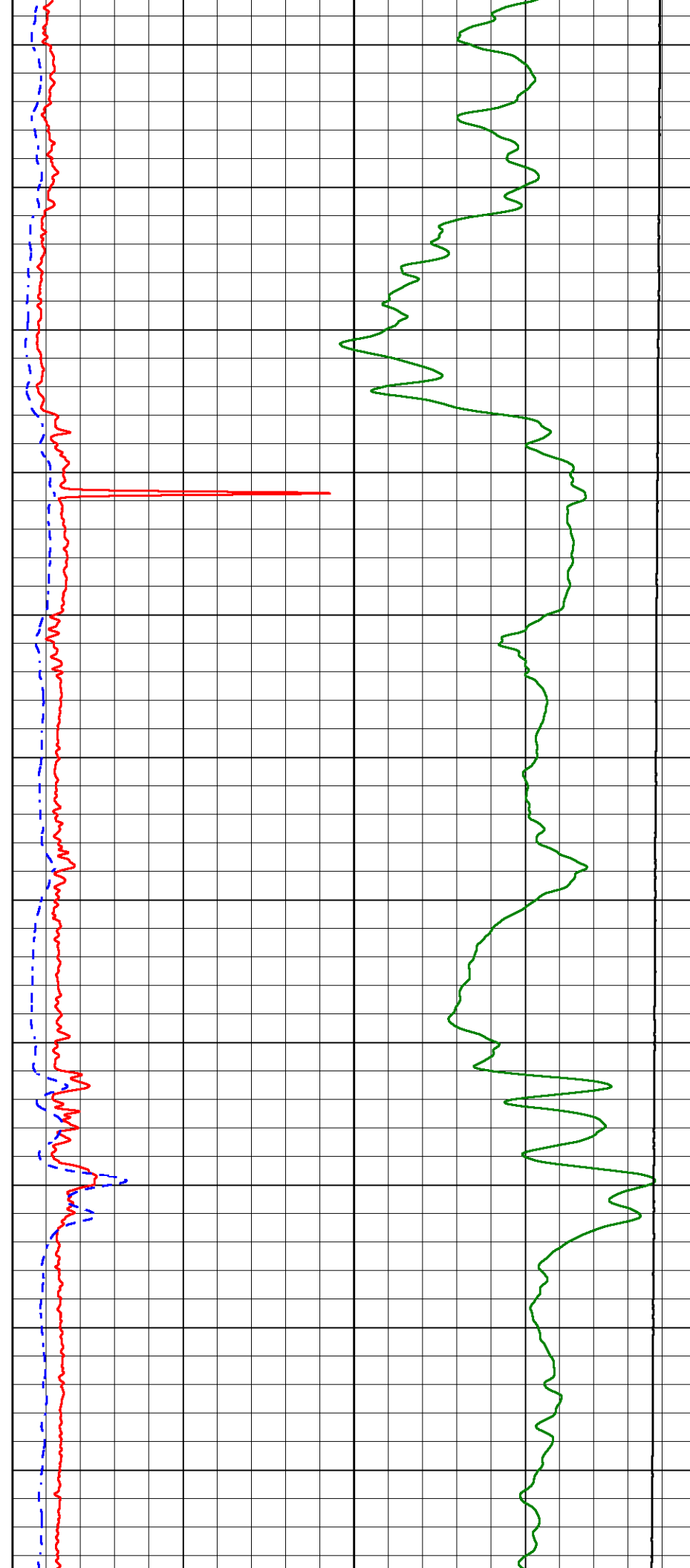
Database File arcadian\_liam\_3.db  
 Dataset Pathname stackml/pass6.1  
 Presentation Format \_dil2in  
 Dataset Creation Mon Nov 15 03:45:24 2021  
 Charted by Depth in Feet scaled 1:600

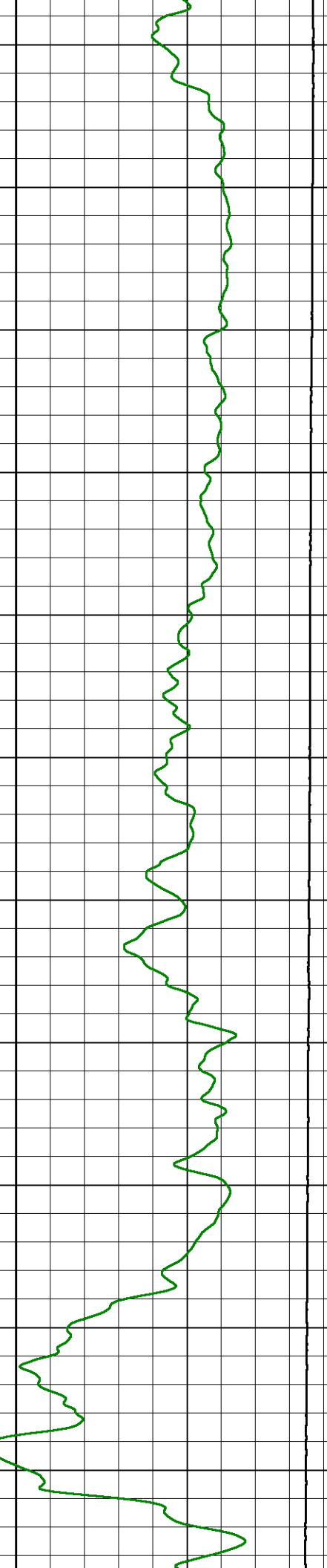
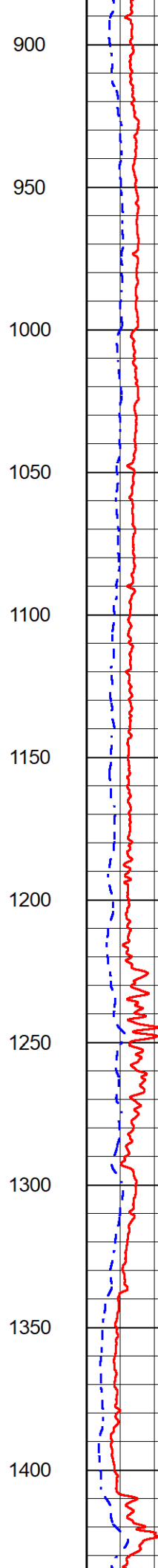
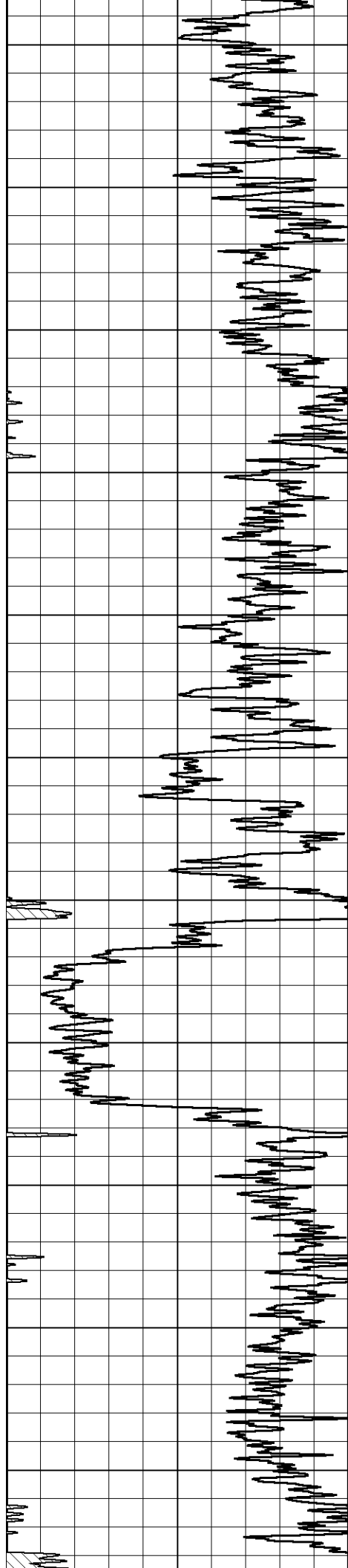
0	Gamma Ray (GAPI)	150	1000	Conductivity (mmho/m)	0
			15000	Line Tension (lb)	0
			0	Shallow Resistivity (Ohm-m)	50
			0	Deep Resistivity (Ohm-m)	50
				Shallow Resistivity	
			50	(Ohm-m)	200
			50	Deep Resistivity (Ohm-m)	200

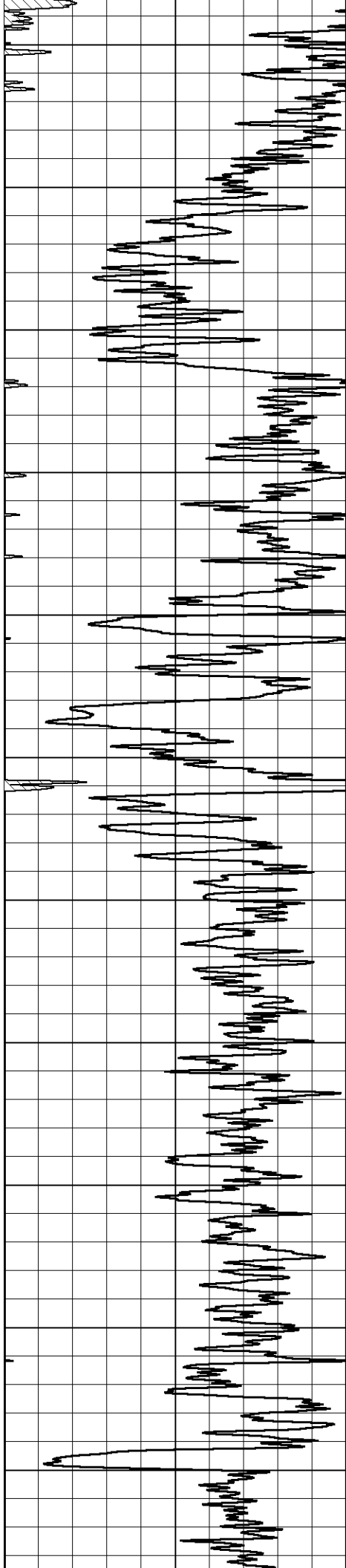




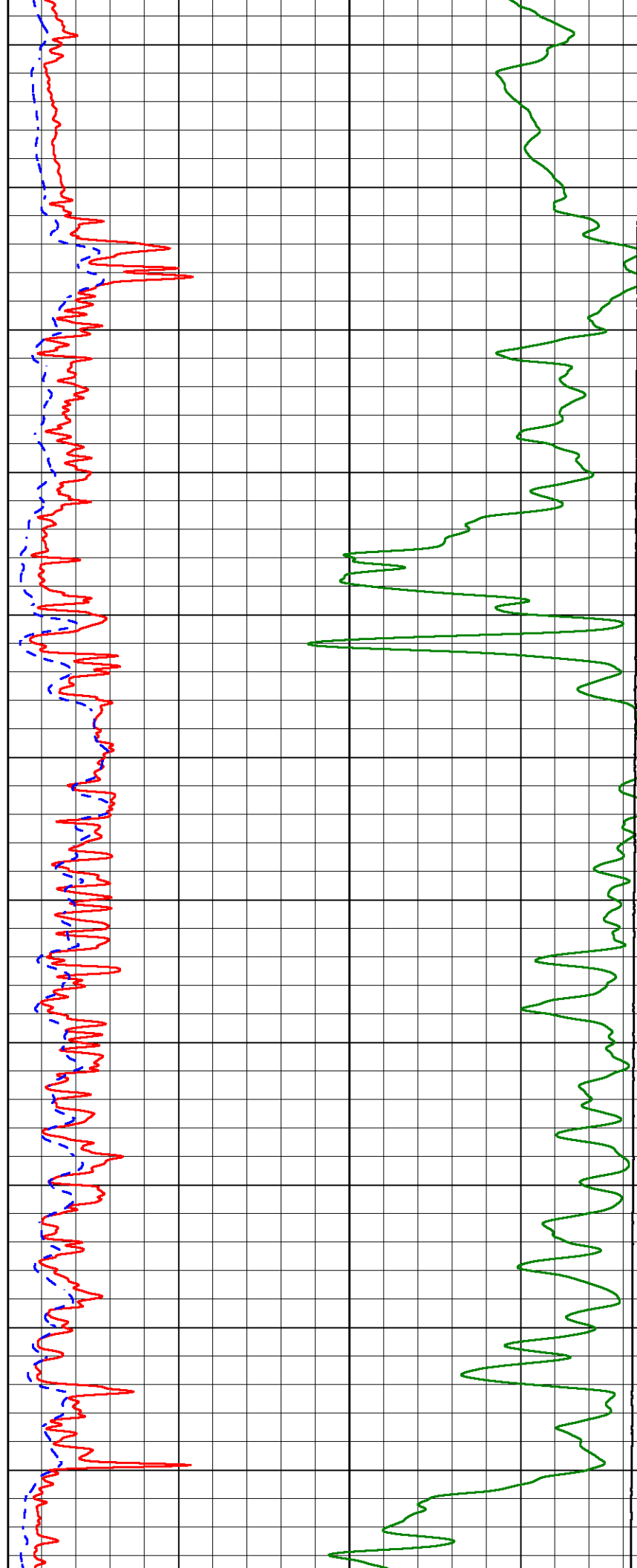
350  
400  
450  
500  
550  
600  
650  
700  
750  
800  
850

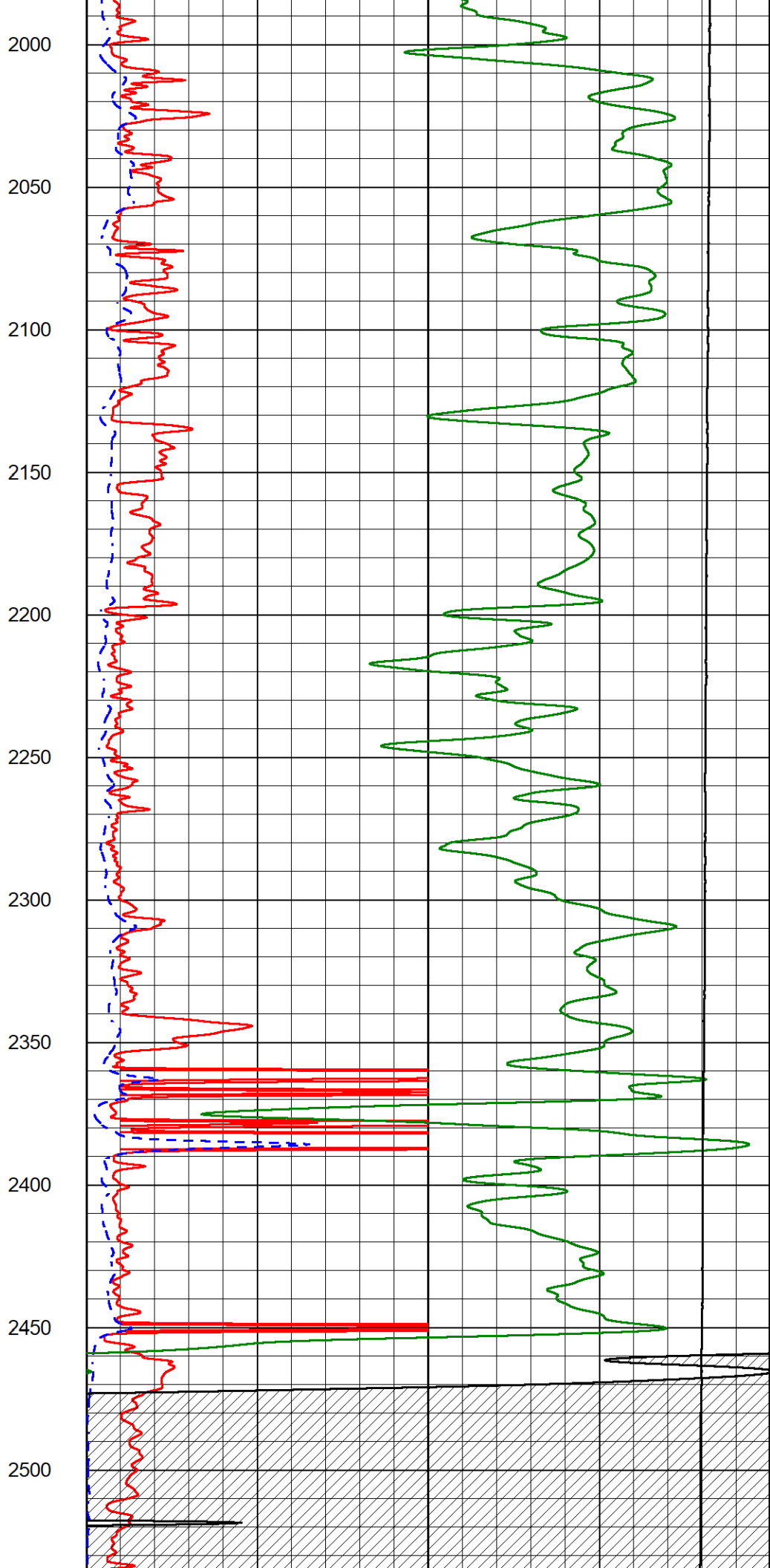
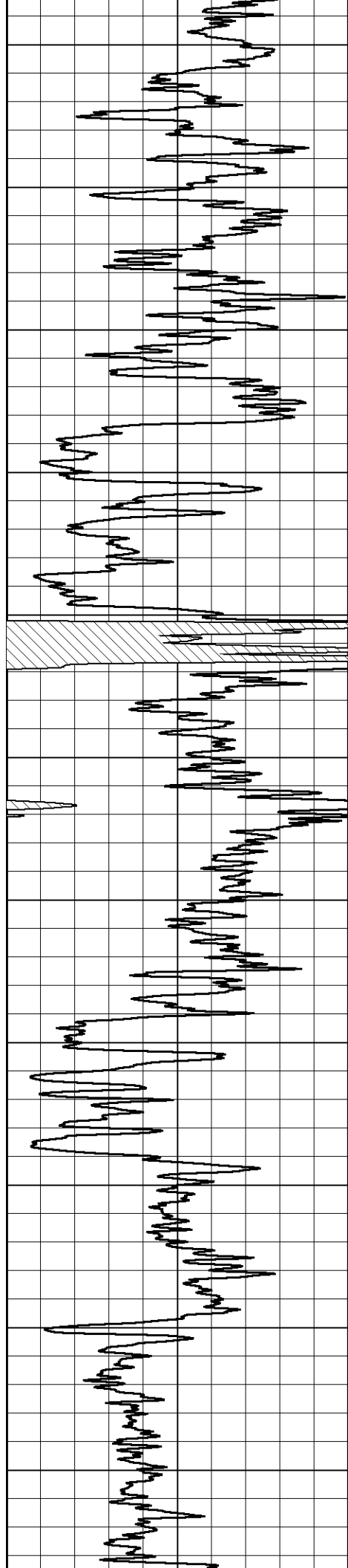


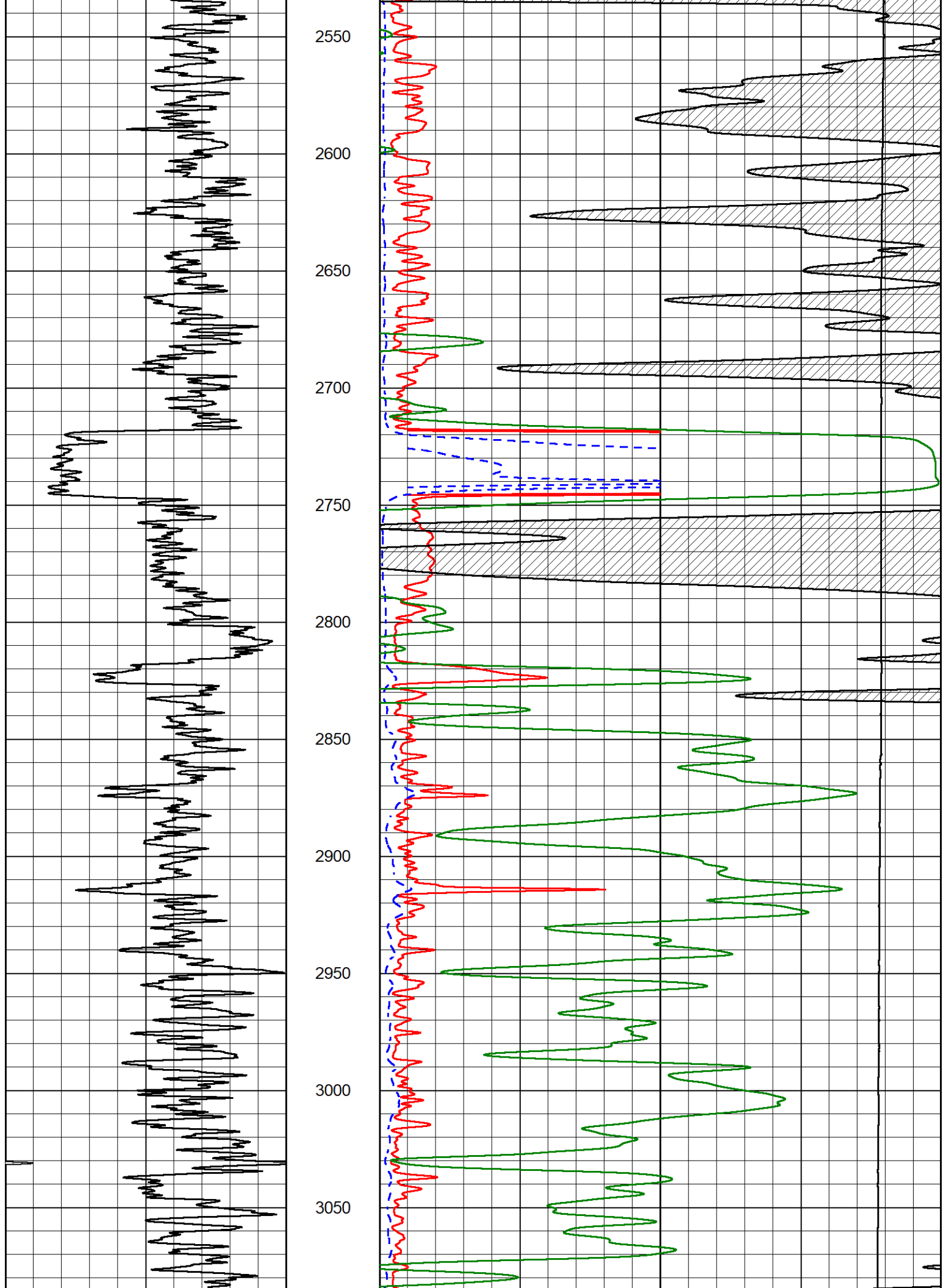


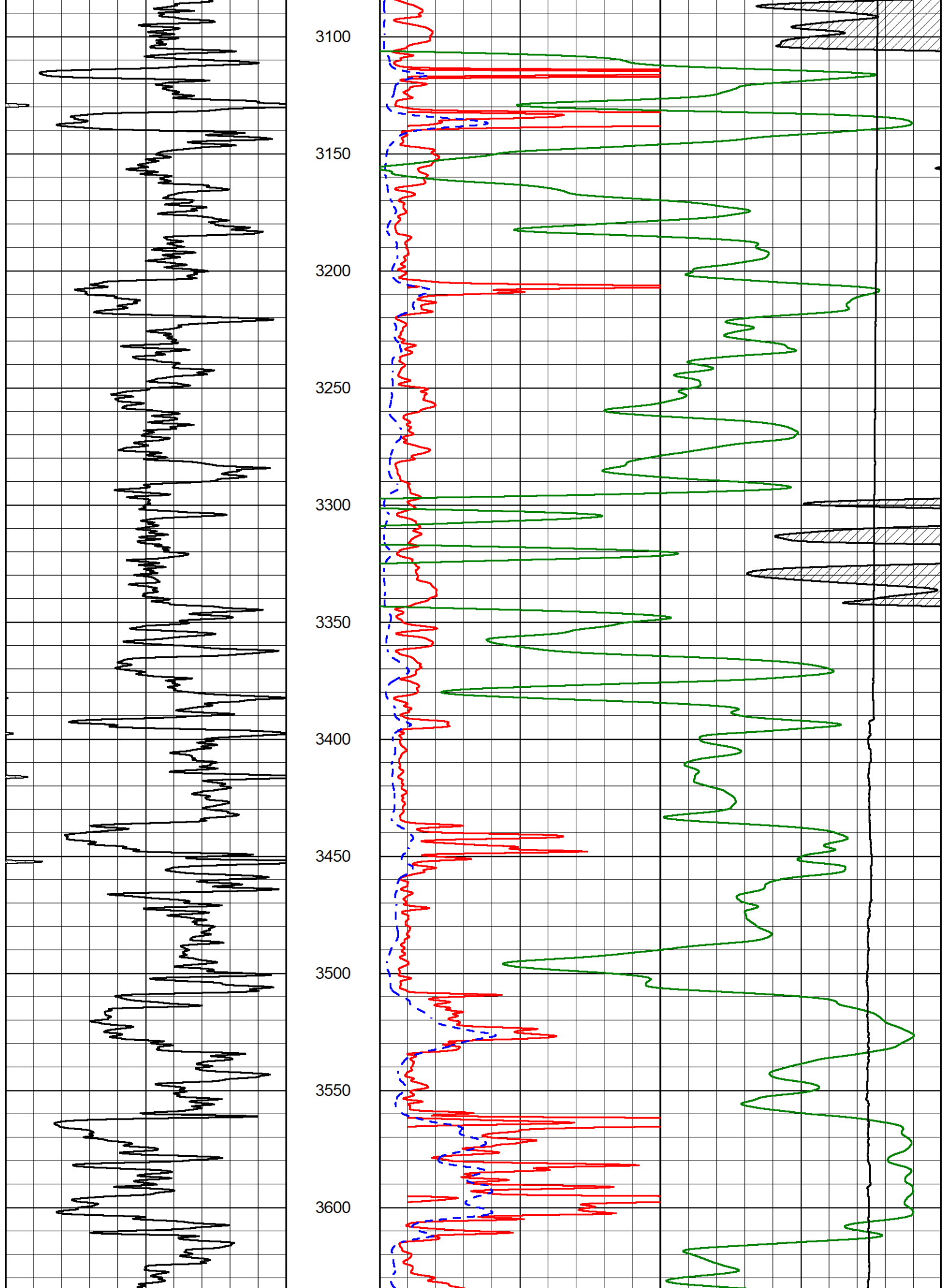


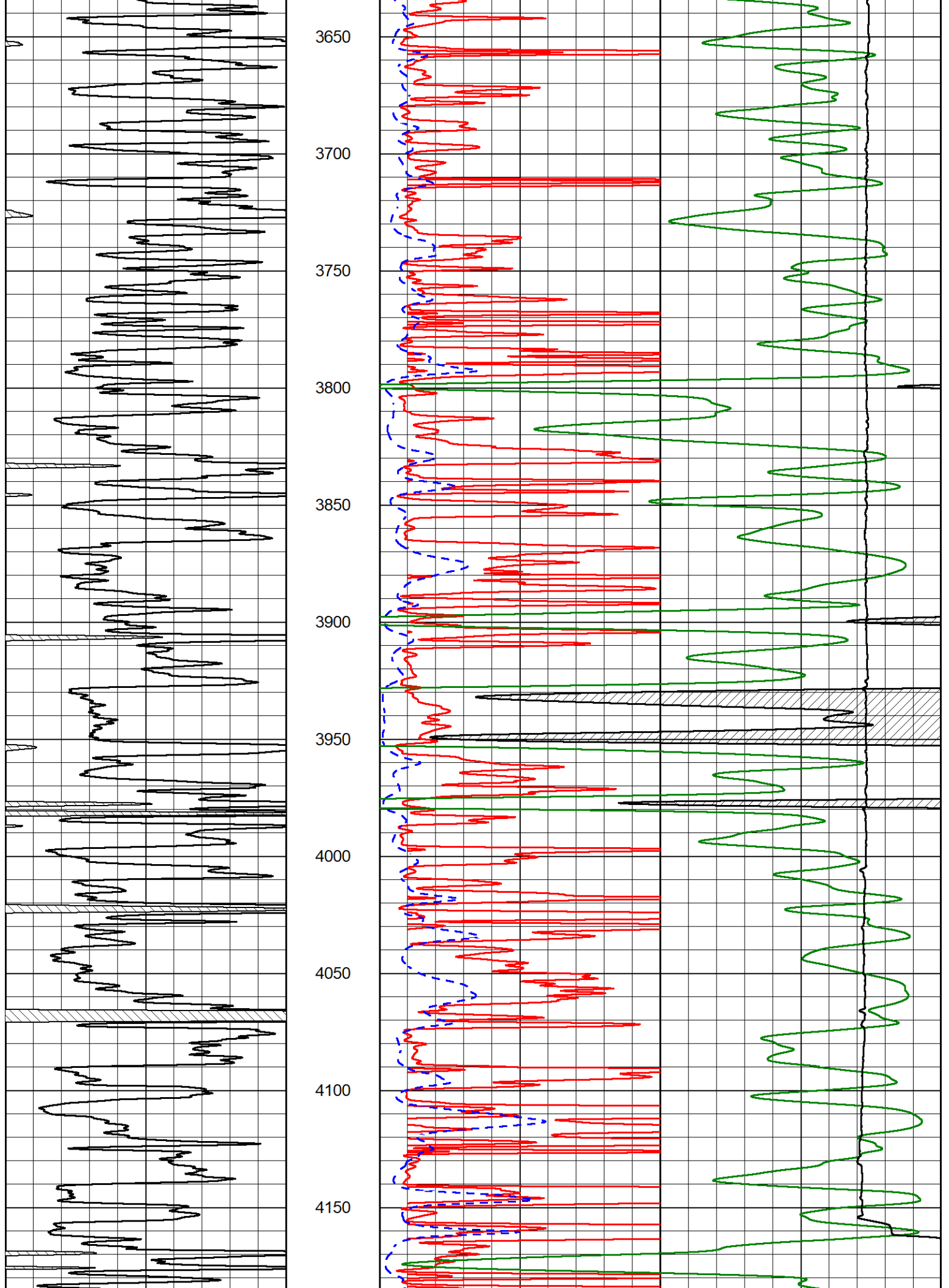
1450  
1500  
1550  
1600  
1650  
1700  
1750  
1800  
1850  
1900  
1950

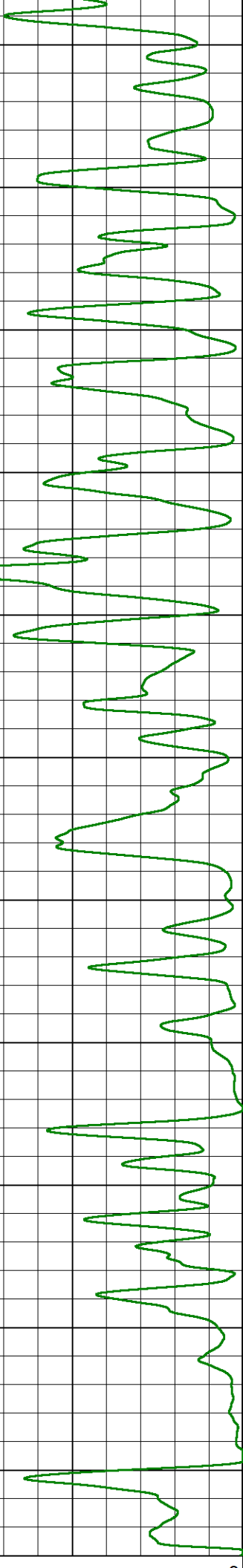
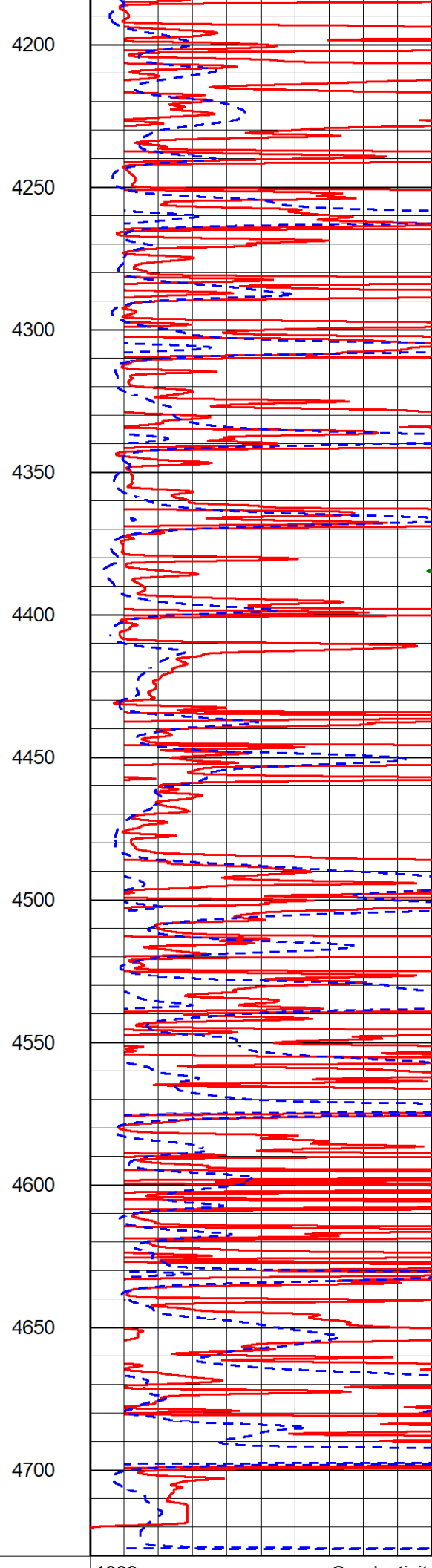
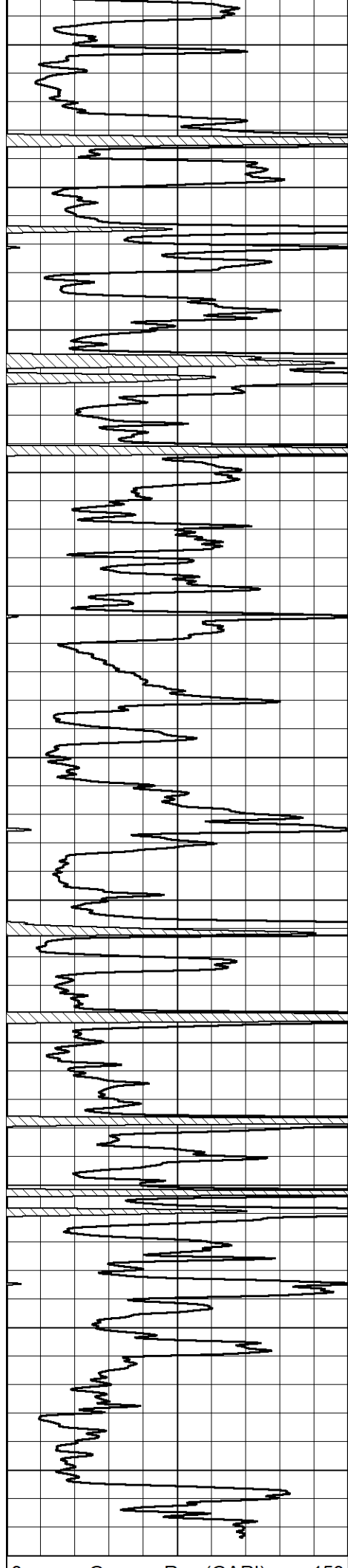












0	Gamma Ray (GAPI)	150
0	Shallow Resistivity (Ohm-m)	50
0	Deep Resistivity (Ohm-m)	50

1000	Conductivity (mmho/m)	0
15000	Line Tension (lb)	0
0	Shallow Resistivity (Ohm-m)	50
0	Deep Resistivity (Ohm-m)	50
50	Shallow Resistivity (Ohm-m)	200
50	Deep Resistivity (Ohm-m)	200



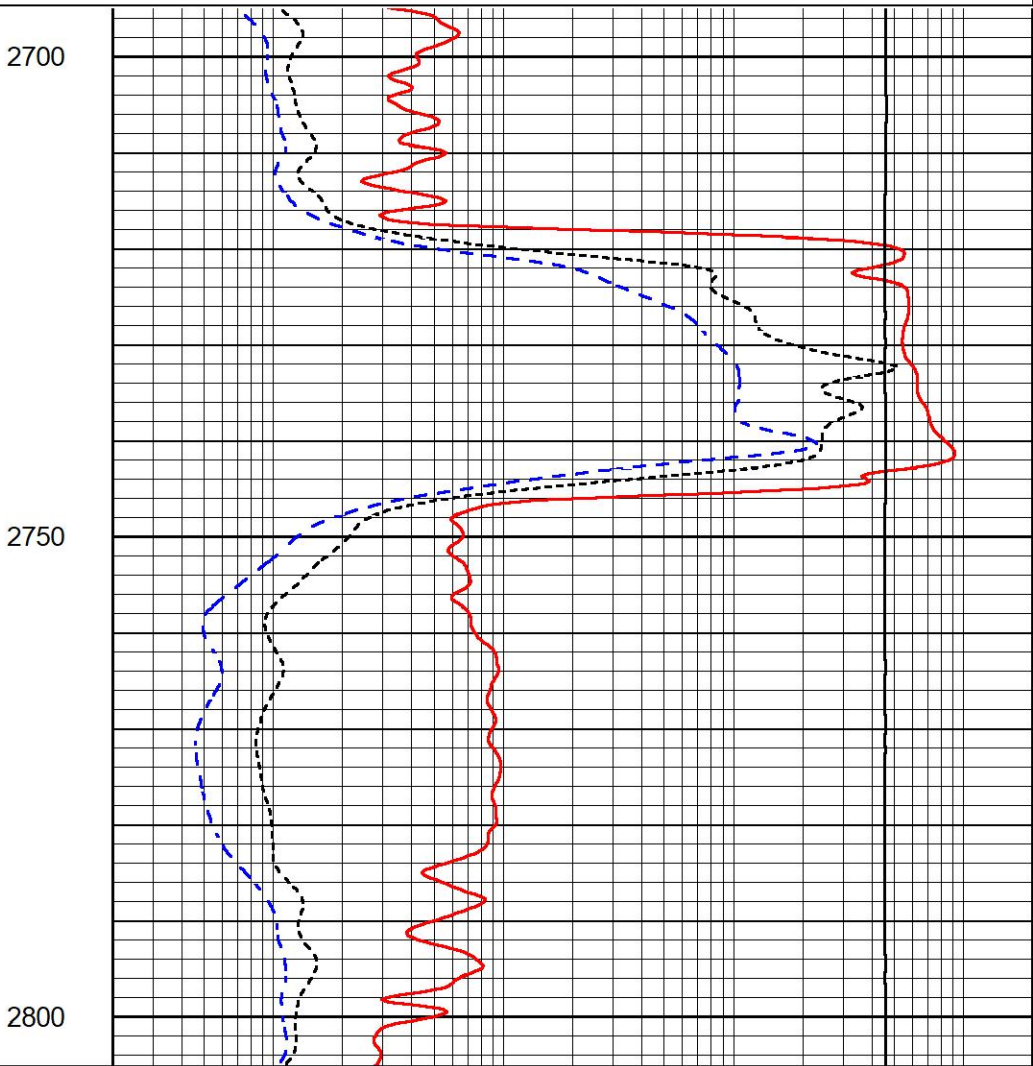
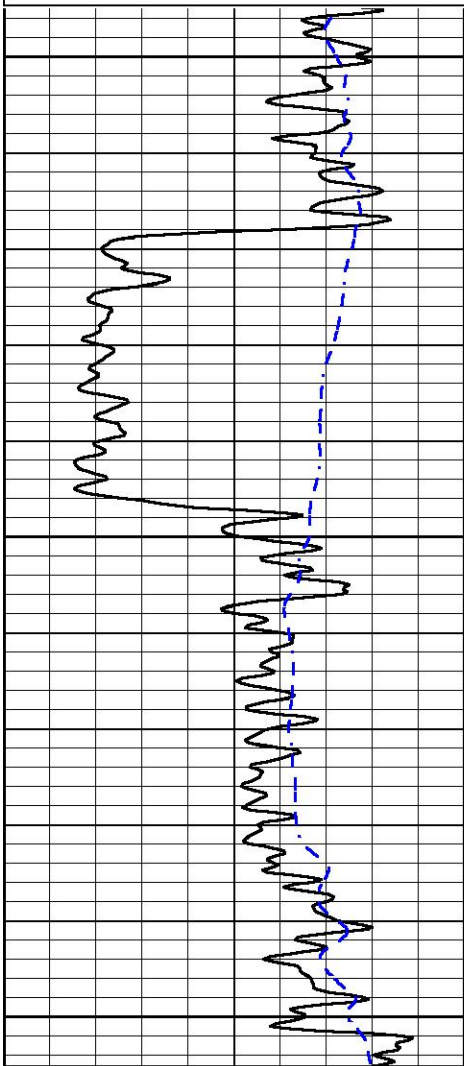
# ANHYDRITE SECTION

## MAIN PASS

Database File arcadian\_liam\_3.db  
 Dataset Pathname stackml/pass5.1  
 Presentation Format \_dil  
 Dataset Creation Mon Nov 15 03:17:16 2021  
 Charted by Depth in Feet scaled 1:240

0	Gamma Ray (GAPI)	150
-200	SP (mV)	0

0.2	Deep Resistivity (Ohm-m)	2000
0.2	Medium Resistivity (Ohm-m)	2000
0.2	Shallow Resistivity (Ohm-m)	2000
10000	Line Tension (lb)	0



0	Gamma Ray (GAPI)	150
-200	SP (mV)	0

0.2	Deep Resistivity (Ohm-m)	2000
0.2	Medium Resistivity (Ohm-m)	2000

0.2	Shallow Resistivity (Ohm-m)	2000
10000	Line Tension (lb)	0



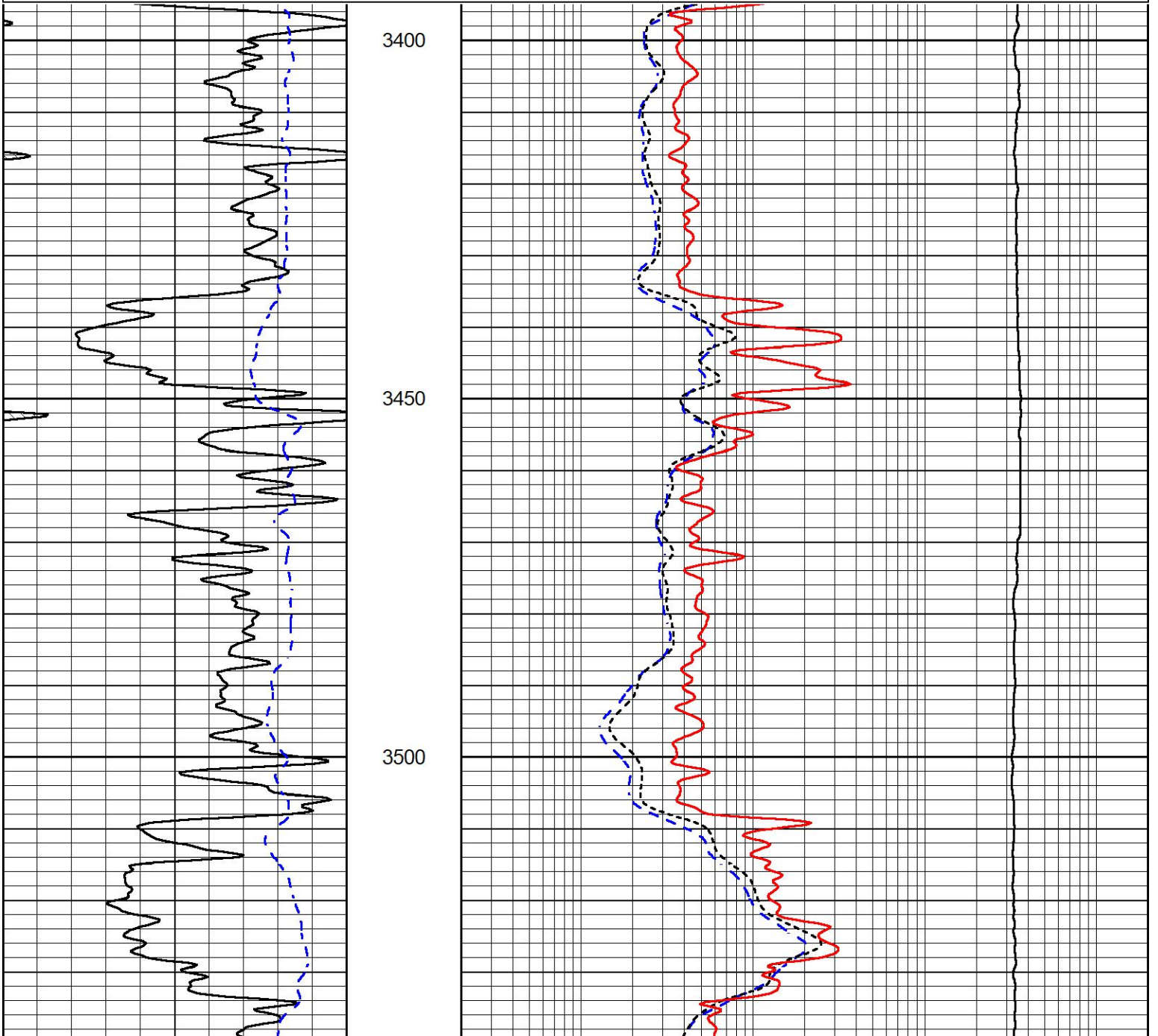
# DETAIL SECTION

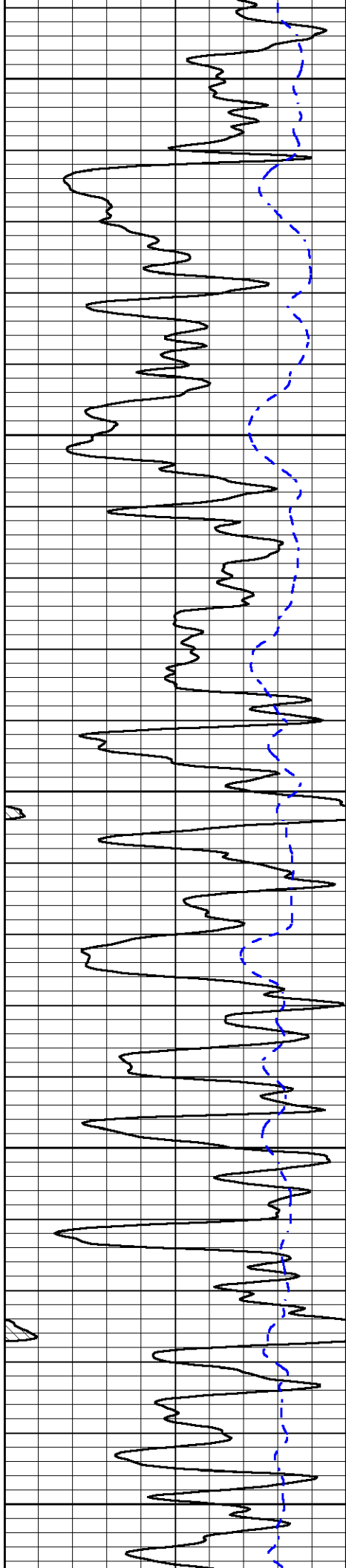
## MAIN PASS

Database File      arcadian\_liam\_3.db  
 Dataset Pathname   stackml/pass4.1  
 Presentation Format   \_dil  
 Dataset Creation    Mon Nov 15 03:10:23 2021  
 Charted by          Depth in Feet scaled 1:240

0	Gamma Ray (GAPI)	150
-200	SP (mV)	0

0.2	Deep Resistivity (Ohm-m)	2000
0.2	Medium Resistivity (Ohm-m)	2000
0.2	Shallow Resistivity (Ohm-m)	2000
10000	Line Tension (lb)	0





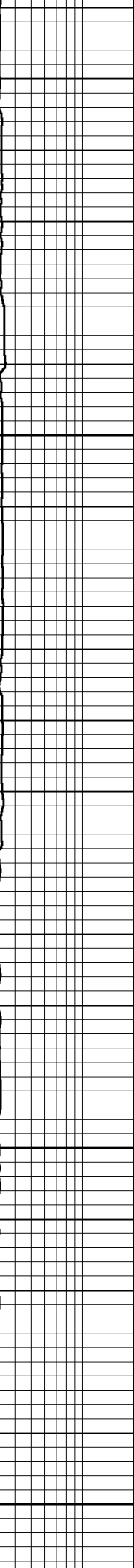
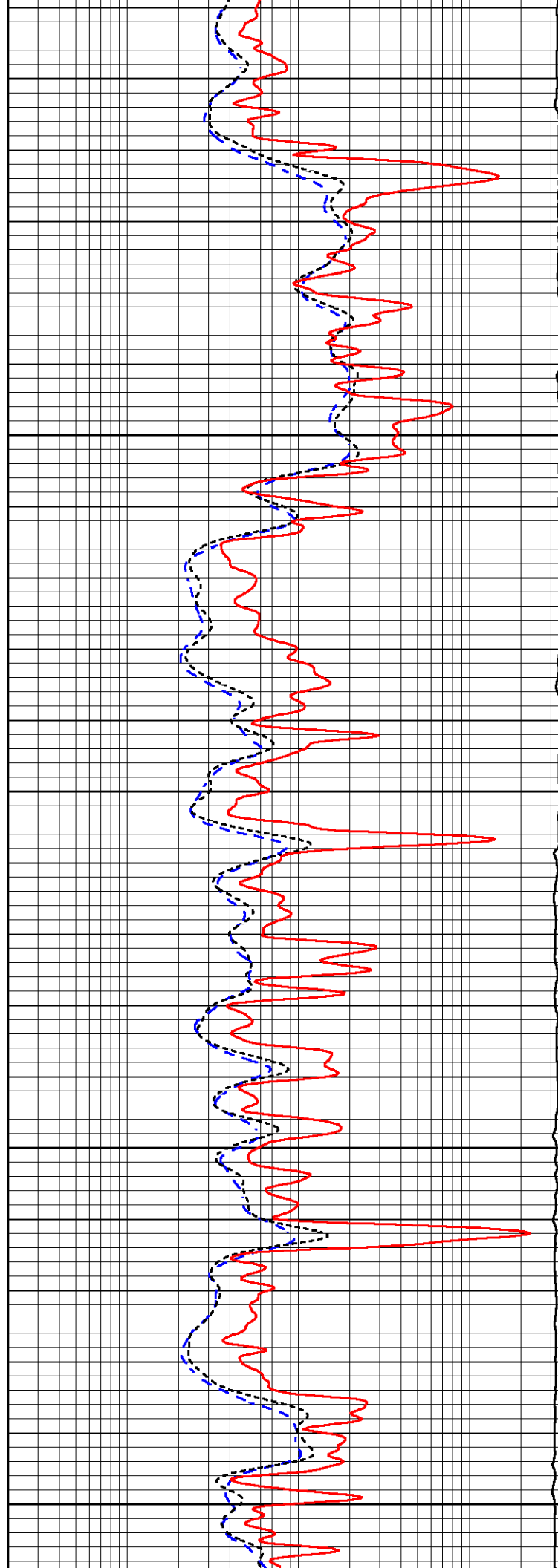
3550

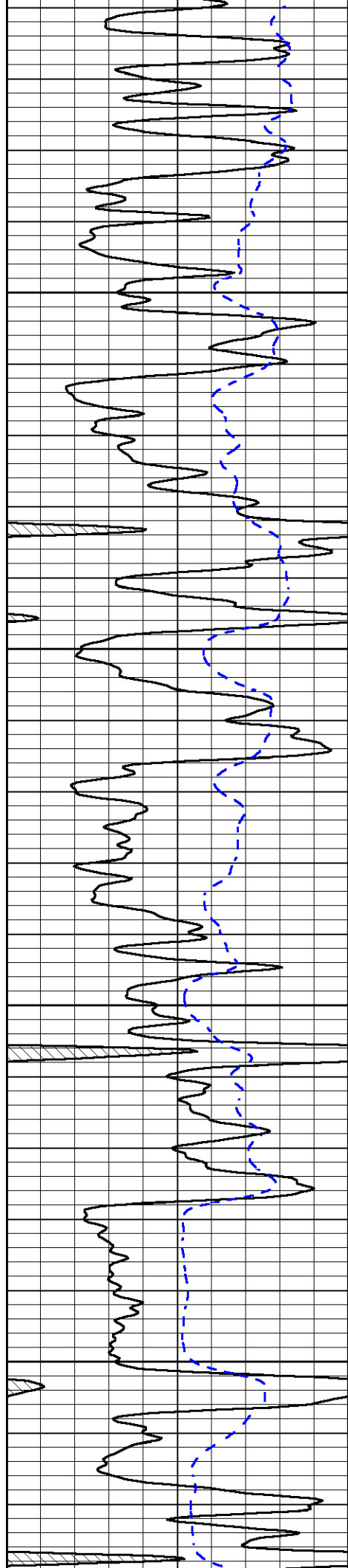
3600

3650

3700

3750



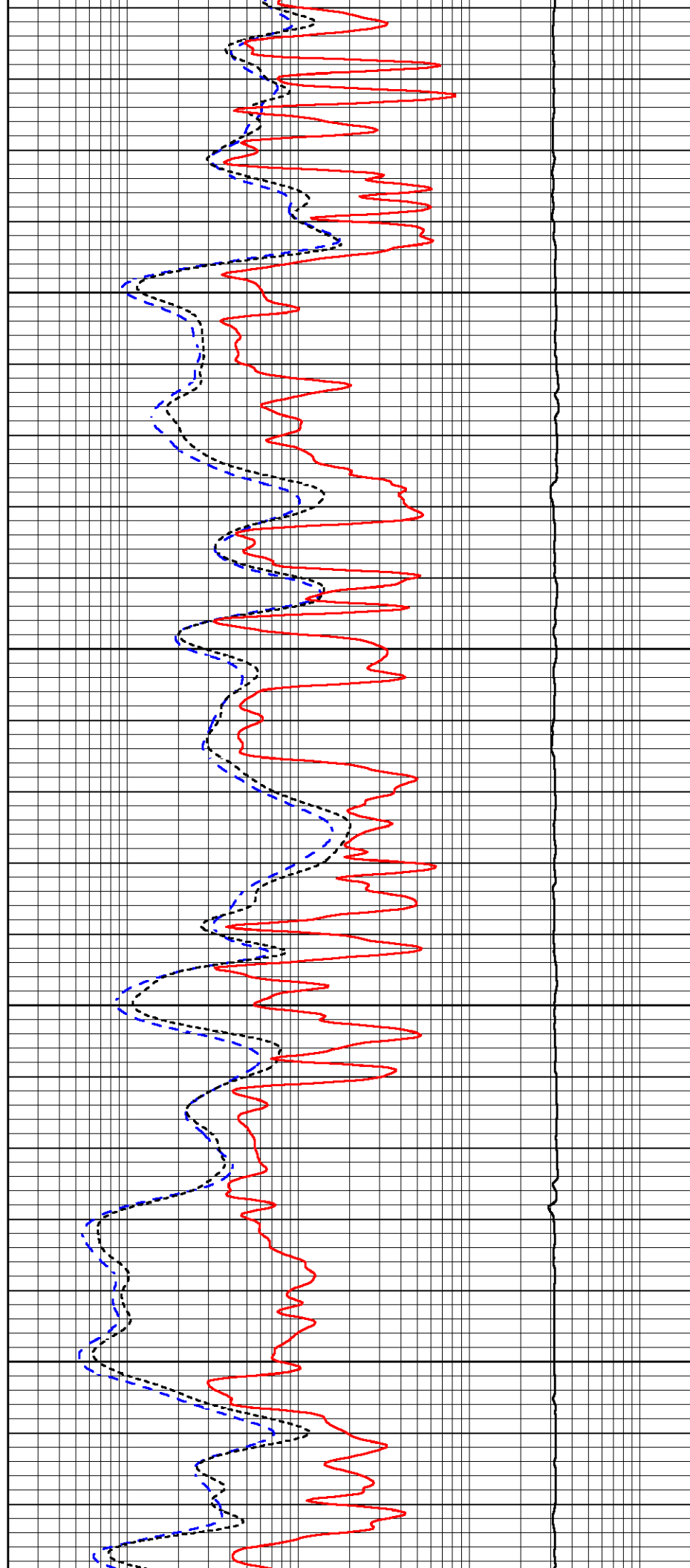


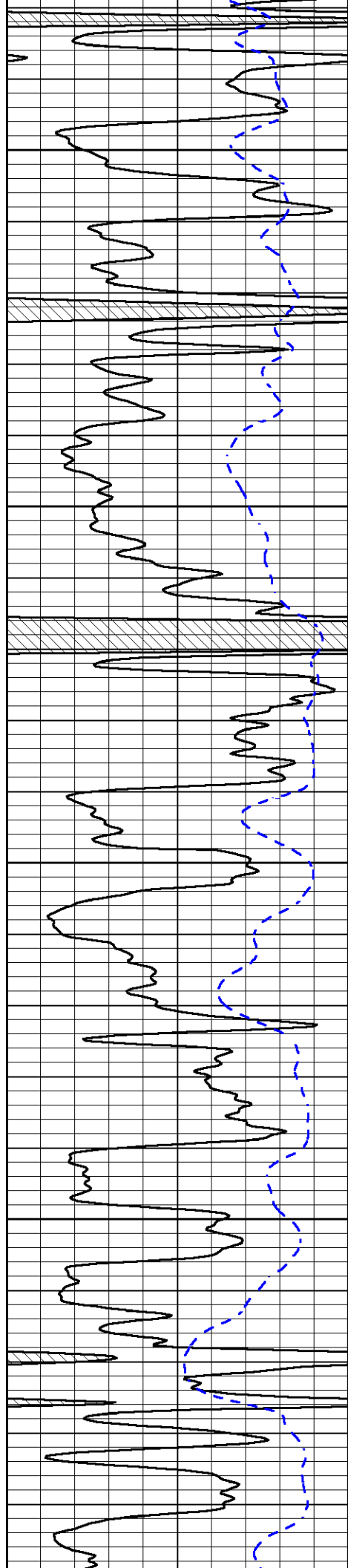
3800

3850

3900

3950



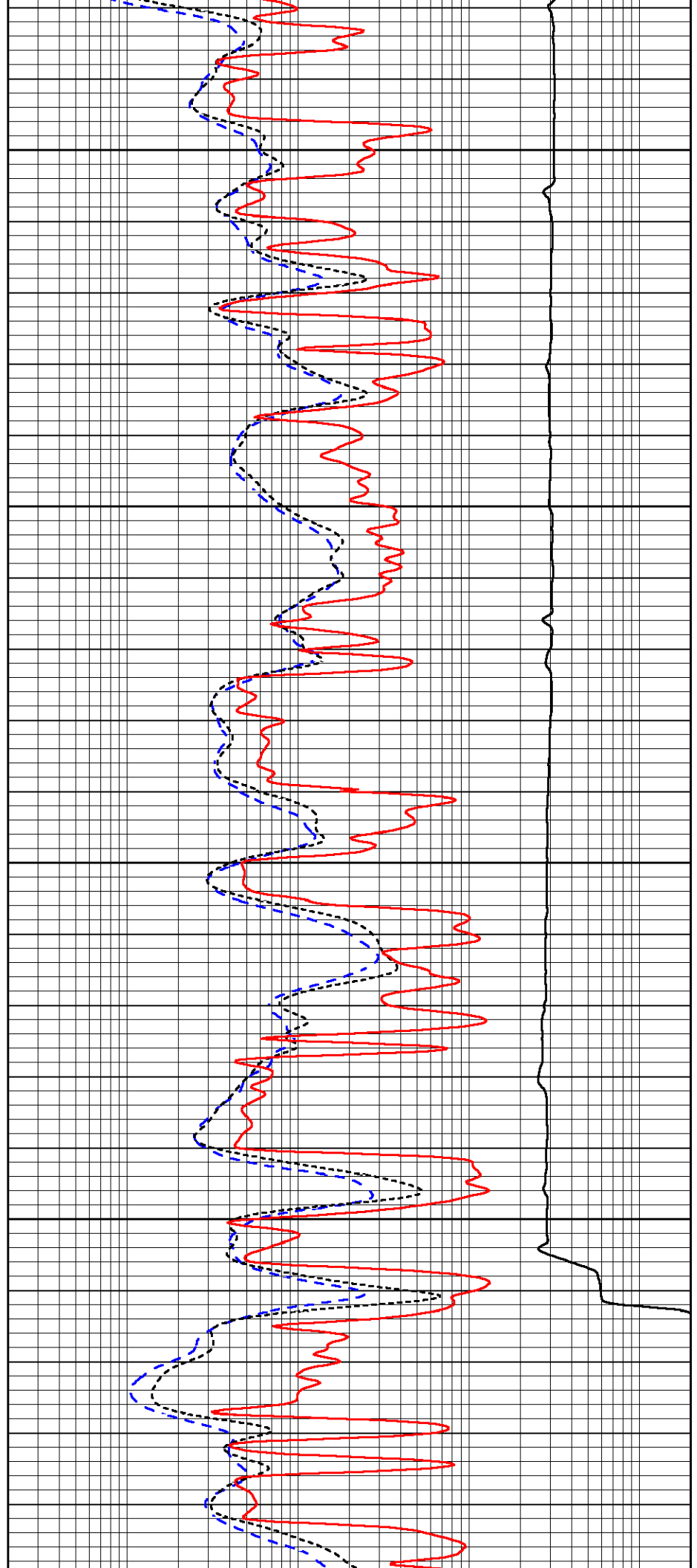


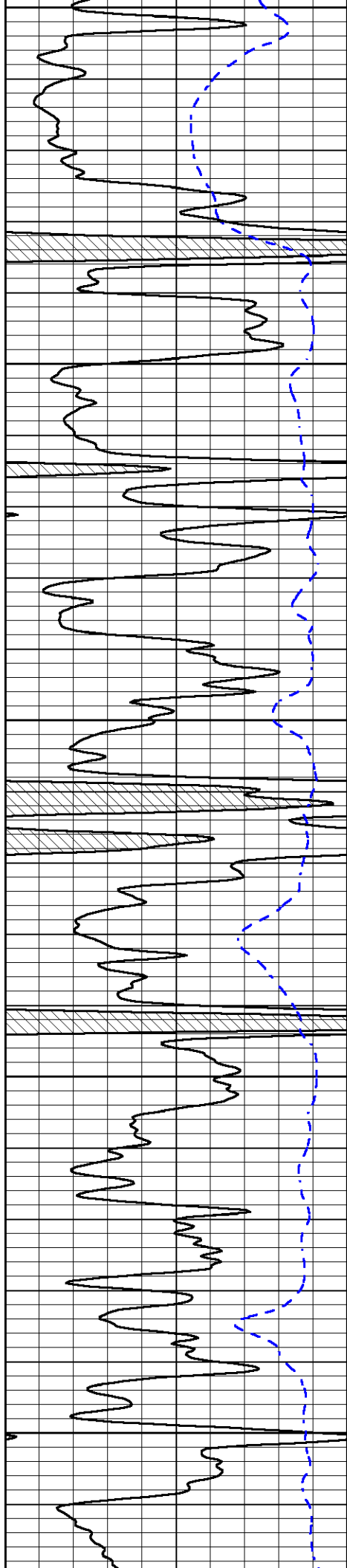
4000

4050

4100

4150





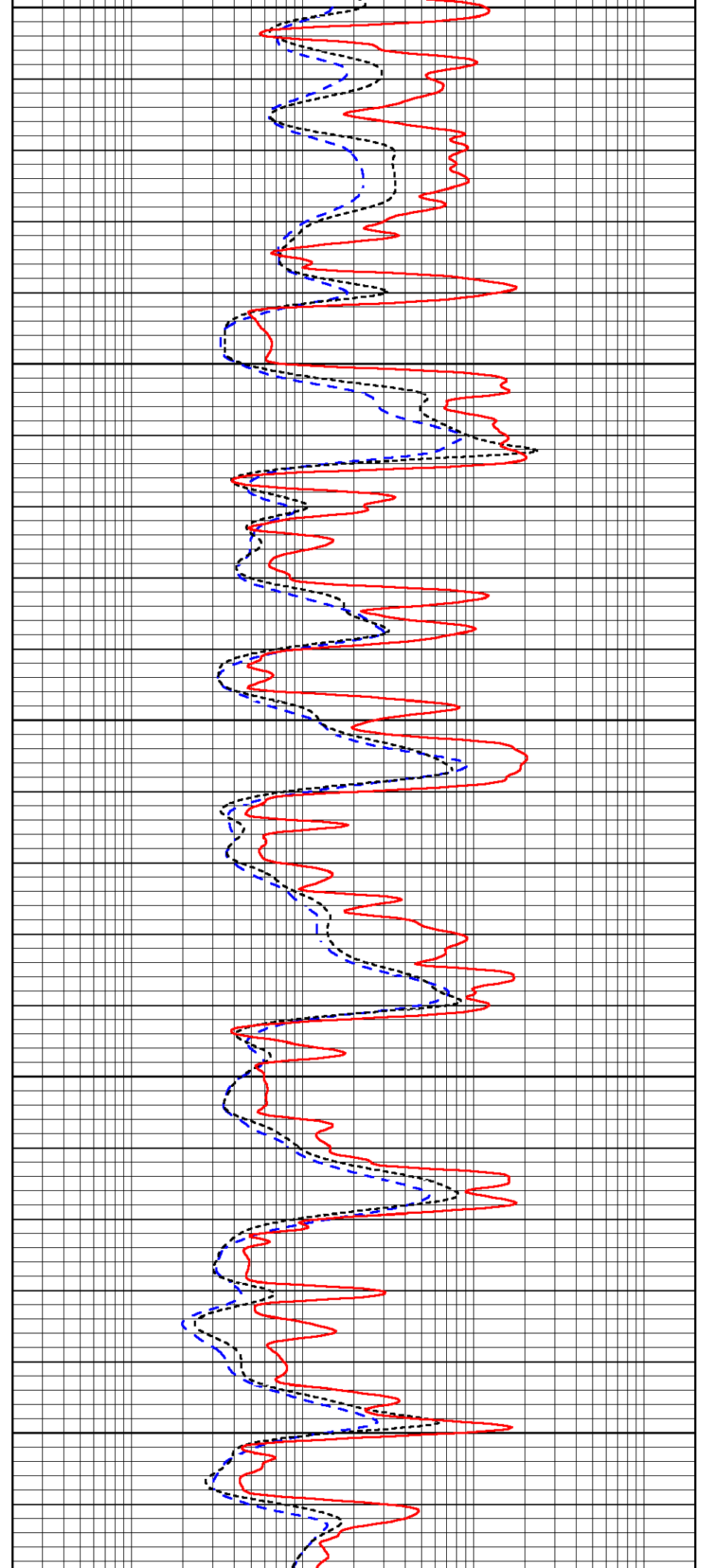
4200

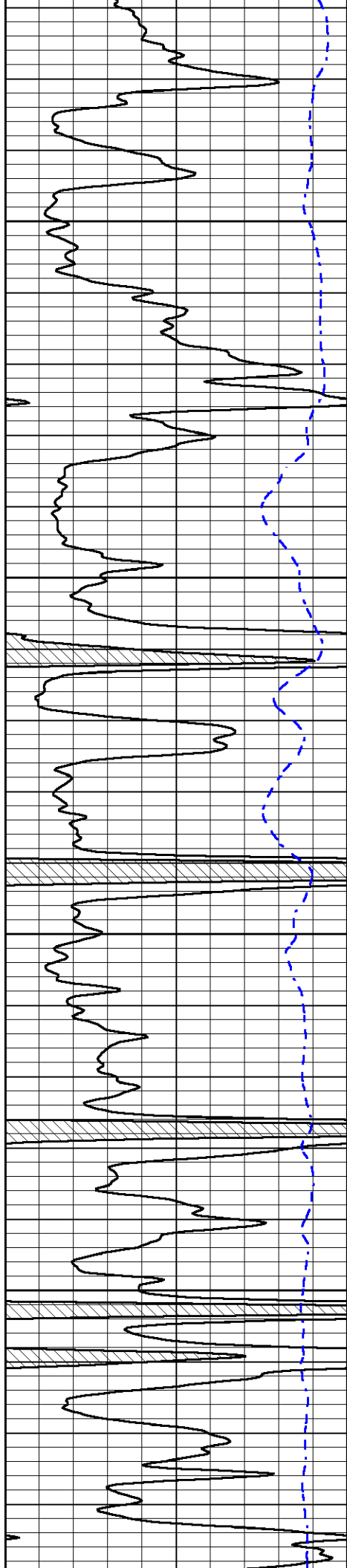
4250

4300

4350

4400



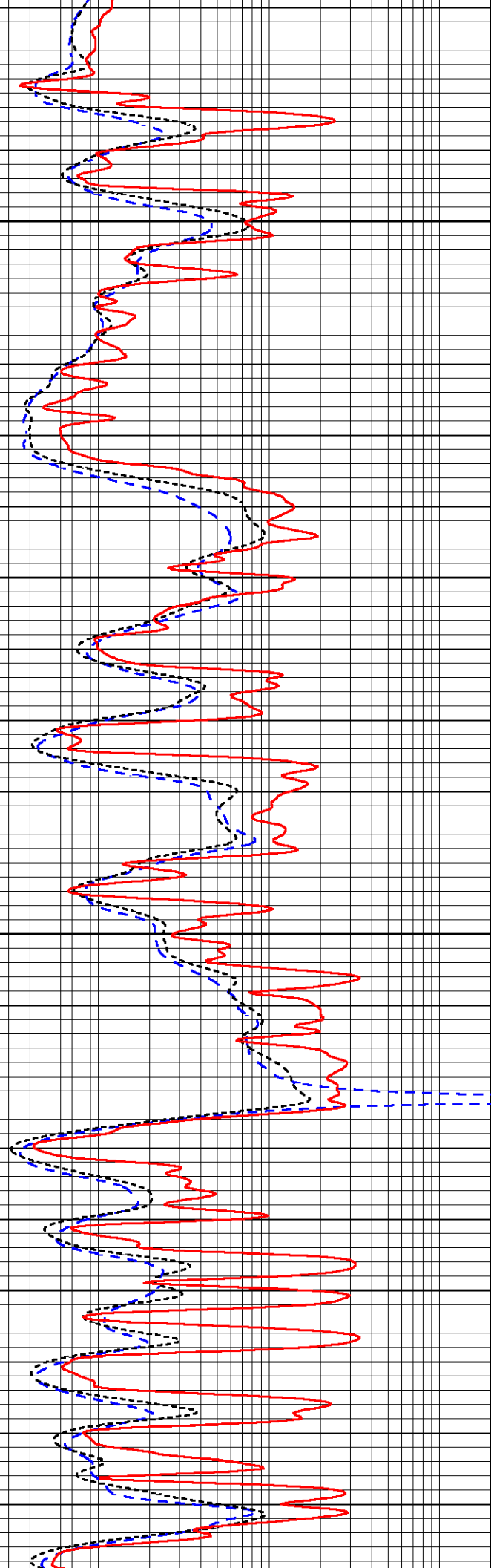


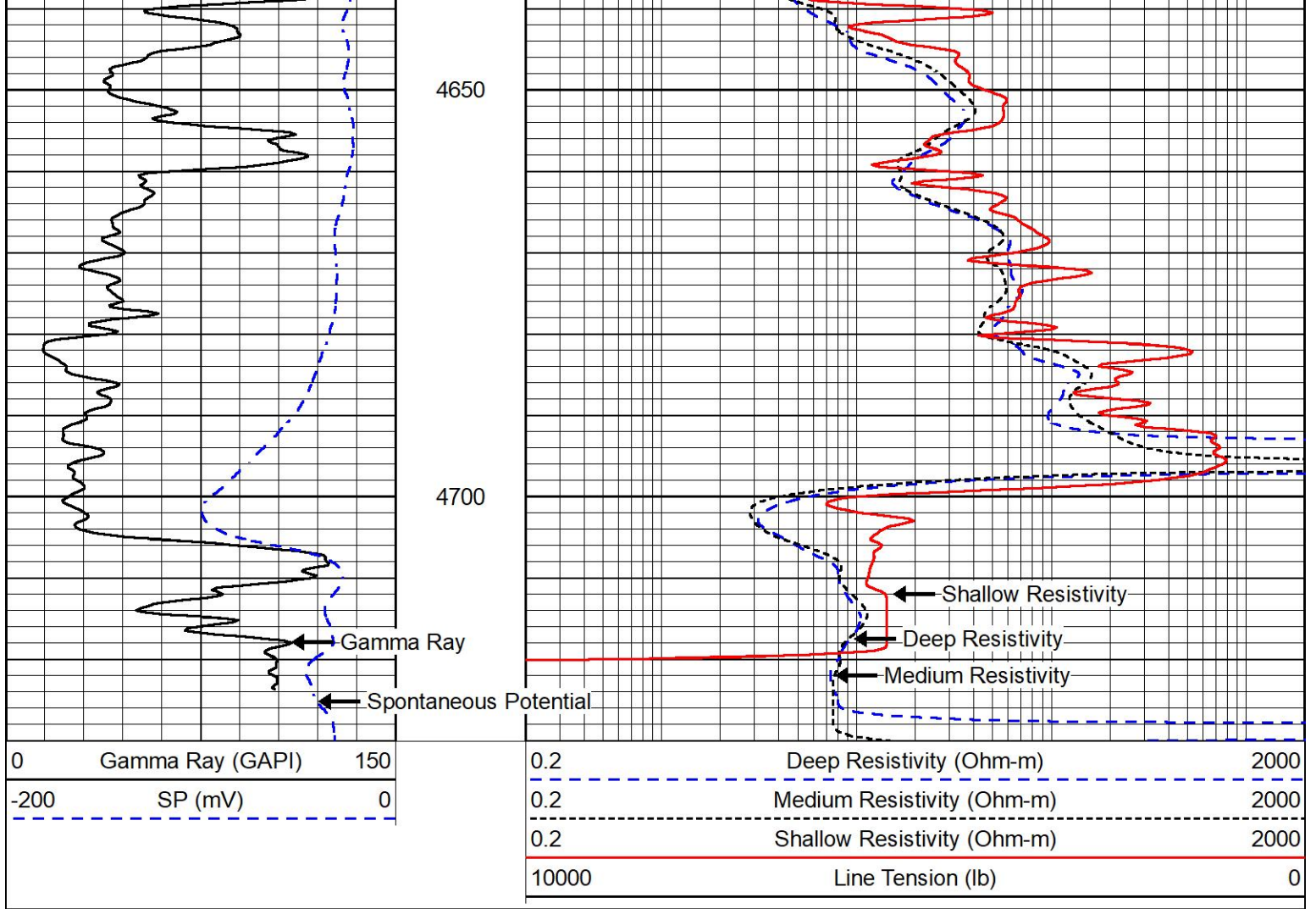
4450

4500

4550

4600





MIDWEST WIRELINE

## REPEAT SECTION

### REPEAT PASS

Database File arcadian\_liam\_3.db  
 Dataset Pathname stackml/pass2.1  
 Presentation Format \_dil  
 Dataset Creation Mon Nov 15 03:09:05 2021  
 Charted by Depth in Feet scaled 1:240

