



MIDWEST WIRELINE

DUAL COMP POROSITY LOG

Company Arcadian Resources LLC
 Well Liam #3
 Field Unnamed
 County Thomas
 State Kansas

Company Arcadian Resources LLC
 Well Liam #3
 Field Unnamed
 County Thomas
 State Kansas

Location: API #: 15-193-21098-00-00
 750 FSL & 1260 FWL
 SEC 20 TWP 8S RGE 32W
 Permanent Datum Ground Level Elevation 3111
 Log Measured From Kelly Bushing
 Drilling Measured From Kelly Bushing
 Other Services
 DIL
 MEL
 Elevation
 K.B. 3116
 D.F.
 G.L. 3111

Date	11/15/2021	11/17/2021
Run Number	One	Two
Type Log	CNL/CDL	
Depth Driller	4153	4734
Depth Logger	4154	4736
Bottom Logged Interval	4125	4714
Top Logged Interval	3400	4150
Type Fluid In Hole	Chemical	
Salinity, PPM CL	600	
Density	9.1	
Level	Full	
Max. Rec. Temp. F	118	
Operating Rig Time	2 Hours	3 Hours
Equipment -- Location	P-108 HAYS	
Recorded By	J. Henrickson	
Witnessed By	Sean Deenihan	Jim Deverman

Borehole Record				Casing Record			
Run No.	Bit	From	To	Size	Wgt.	From	To
One	12.25	0	253	8.625	24	0	253
Two	7.875	253	TD				

<<< Fold Here >>>

All interpretations are opinions based on inferences from electrical or other measurements and Midwest Wireline LLC cannot and does not guarantee the accuracy or correctness of any interpretation, and Midwest Wireline LLC will not be liable or responsible for any loss, costs, damages, or expenses incurred or sustained by anyone resulting from any interpretation made by any of our officers, agents or employees.

Comments

N/A DENOTES NOT AVAILABLE OR NON-APPLICABLE.

Mingo Exit I70
 1 East, 4 1/4 North, East Into

Log Measured From: Kelly Bushing 5 Ft. Above Permanent Datum

THANK YOU FOR USING MIDWEST WIRELINE LLC
 785-625-3858

Your Midwest Wireline Crew		This Log Record Was Witnessed By	
Engineer: J. Henrickson	Operator:	Primary Witness: Sean Deenihan	Secondary Witness: Jim Deverman
Operator:	Operator:	Secondary Witness:	Secondary Witness:
Operator:			

Log Variables


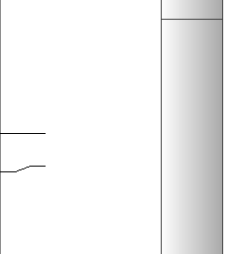
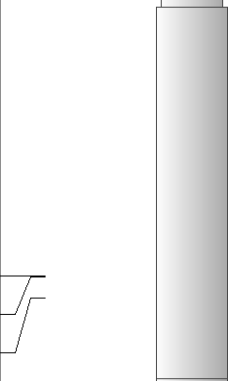
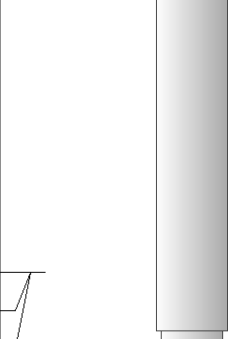

DatabaseC:\ProgramData\Warrior\Data\arcadian_liam_3.db
 Dataset field/well/stackml/pass5.1/_vars_

Top - 4110.00 ft

A	BOREID in	BOTTEMP degF	CASEOD in	CASETHCK in	FLUIDDEN g/cc	M	MATRXDEN g/cc
1	7.875	118	5.5	0	1	2	2.71
NPORSEL	PERFS	SNDERR mmho/m	SNDERRM mmho/m	SPSHIFT mV	SRFTEMP degF	SZCOR	TDEPTH ft
Limestone	0	0	0	360	51	Off	4154

4110.00 ft - Bottom

A	BOREID in	BOTTEMP degF	CASEOD in	CASETHCK in	FLUIDDEN g/cc	M	MATRXDEN g/cc
1	7.875	118	5.5	0	1	2	2.71
NPORSEL	PERFS	SNDERR mmho/m	SNDERRM mmho/m	SPSHIFT mV	SRFTEMP degF	SZCOR	TDEPTH ft
Limestone	0	0	0	360	51	Off	4154

Sensor	Offset (ft)	Schematic	Description	Length (ft)	O.D. (in)	Weight (lb)
GR	40.58		GR-M&W (89-M&W)	3.00	3.50	50.00
CNLSC CNSSC	37.48 36.73		CNT-M&W (10-PSI)	5.50	3.50	100.00
LSD DCAL SSD	28.43 28.42 27.93		CDL-M&W (915-956)	8.50	4.00	250.00
MCAL MI MN	19.83 19.83 19.83		ML-PSI STKBL ML (PSI-02) Stackable Microlog Tools	7.58	4.00	65.00
RLL3F RLL3	15.80 15.80					

CILD	8.00
CILM	4.70
SP	0.20

DIL-PSI HIGH TEMP (959-1032)

18.50

3.50

220.00

Dataset: arcadian_liam_3.db: field/well/stackml/pass5.1
 Total length: 43.08 ft
 Total weight: 685.00 lb
 O.D.: 4.00 in



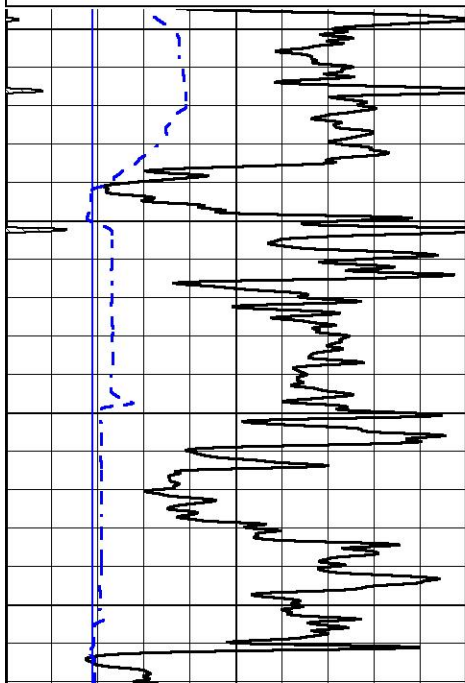
2" SCALE BULK DENSITY

MAIN PASS

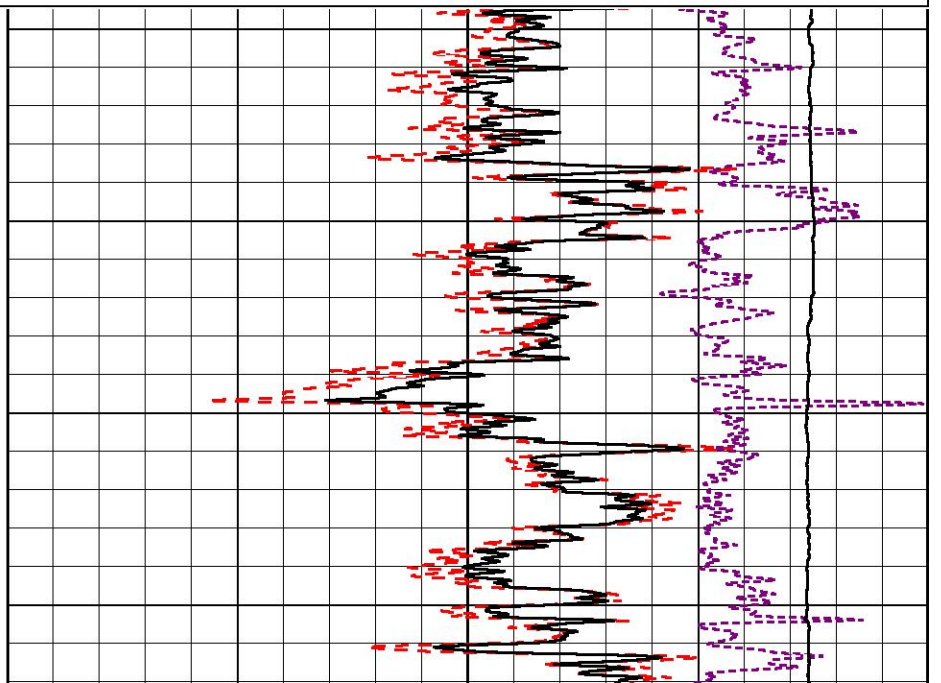
Database File arcadian_liam_3.db
 Dataset Pathname stackml/pass3.1
 Presentation Format _cdl
 Dataset Creation Mon Nov 15 03:08:48 2021
 Charted by Depth in Feet scaled 1:600

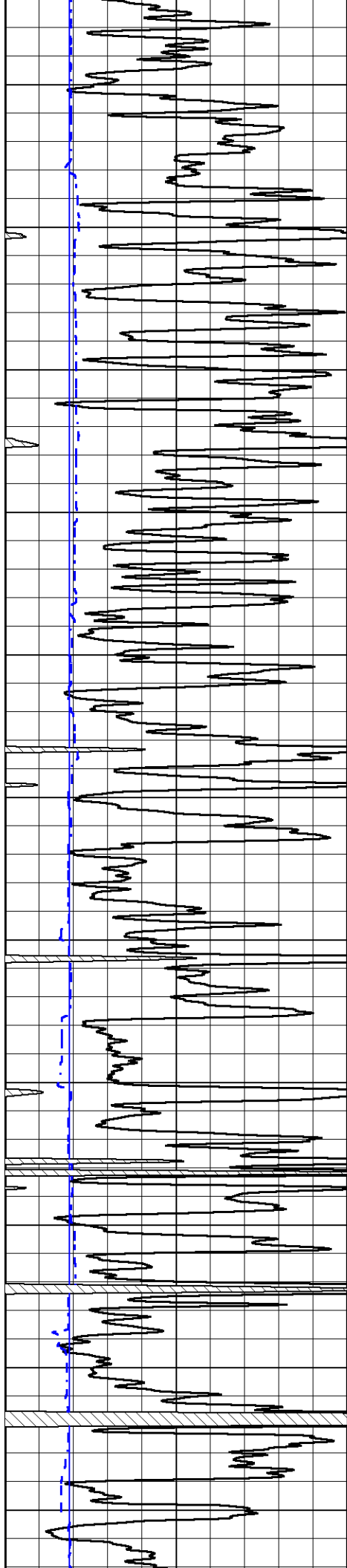
0	Gamma Ray (GAPI)	150
6	Caliper (in)	16

30	Compensated Density (pu)	-10
2	Bulk Density (g/cc)	3
15000	Line Tension (lb)	0
-0.25	Correction (g/cc)	0.25



3400
3450
3500
3550





3600

3650

3700

3750

3800

3850

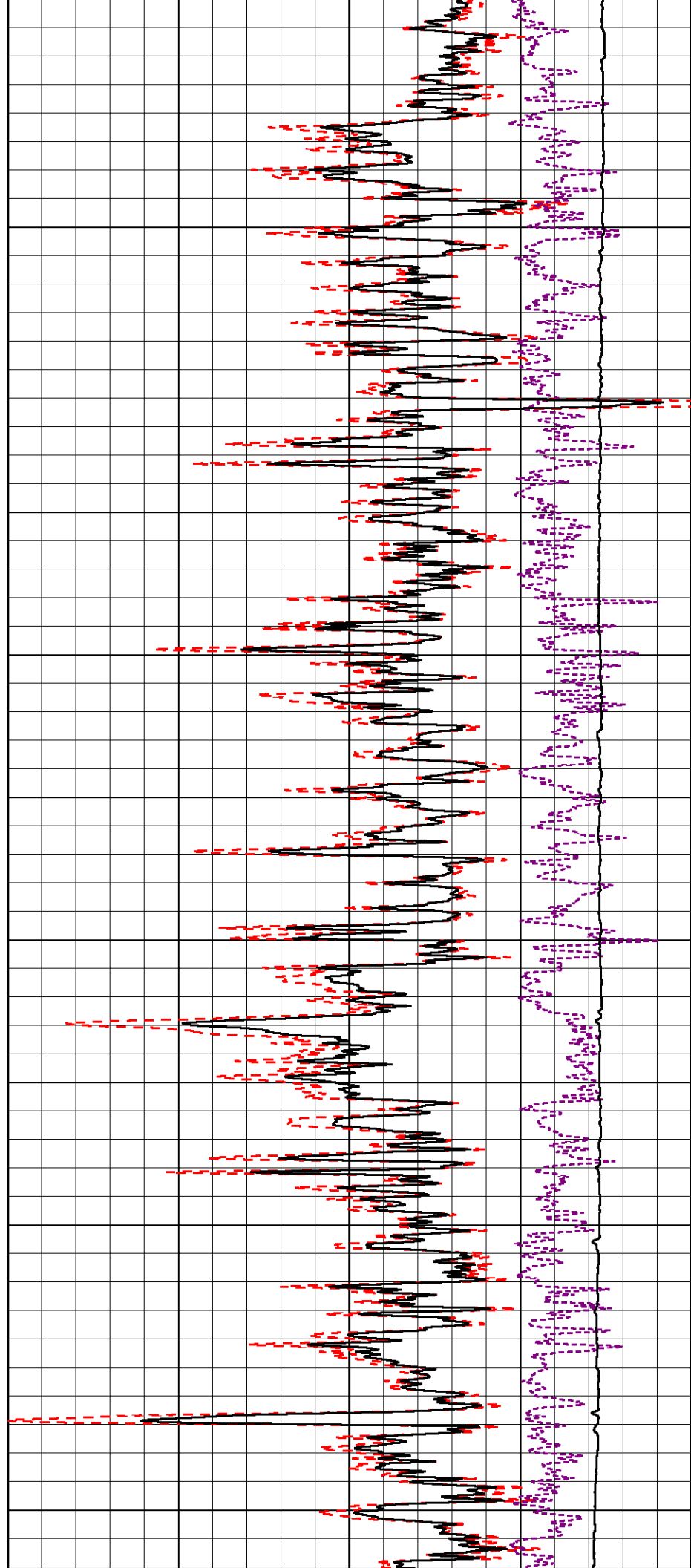
3900

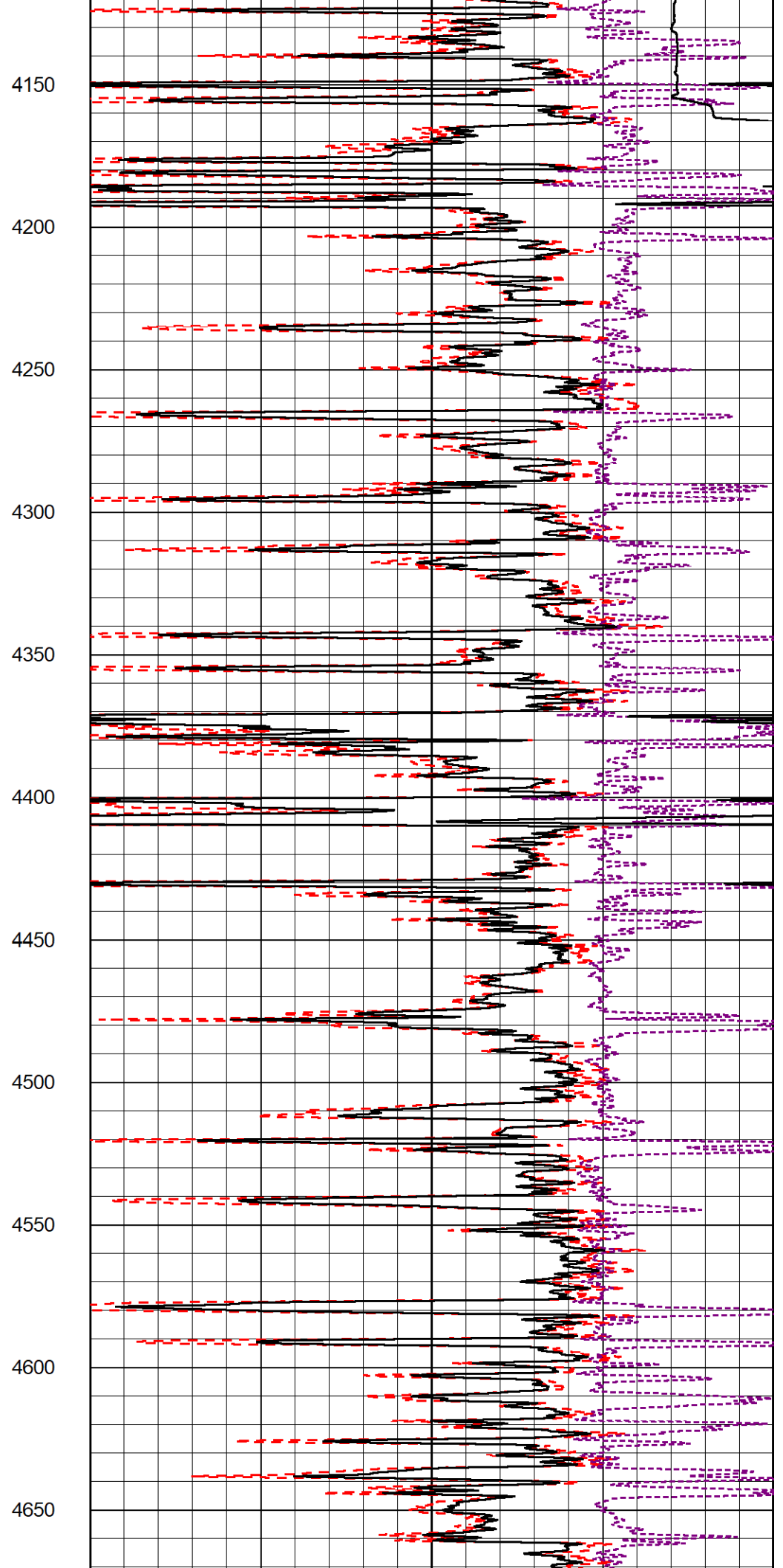
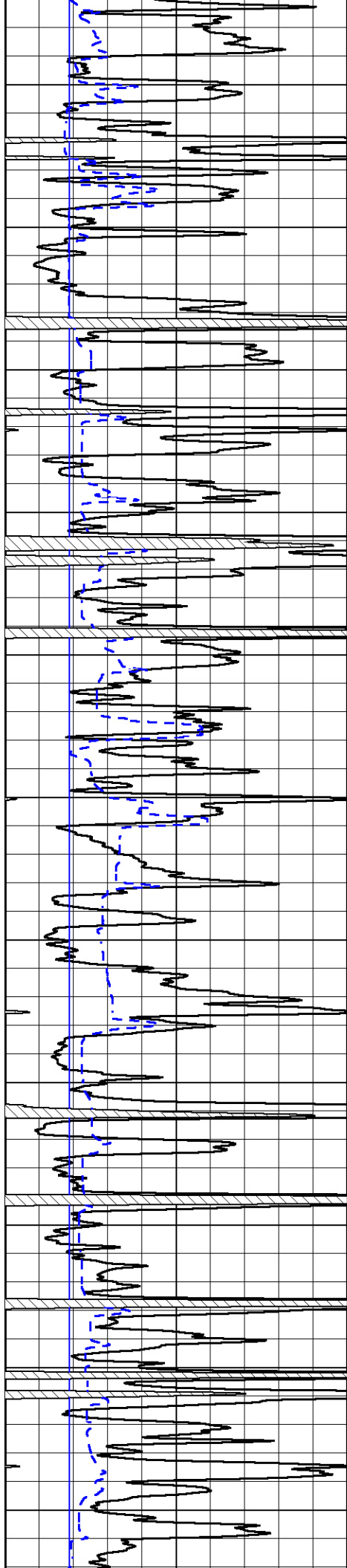
3950

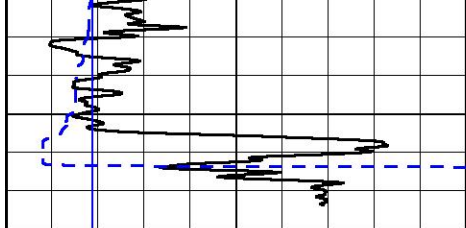
4000

4050

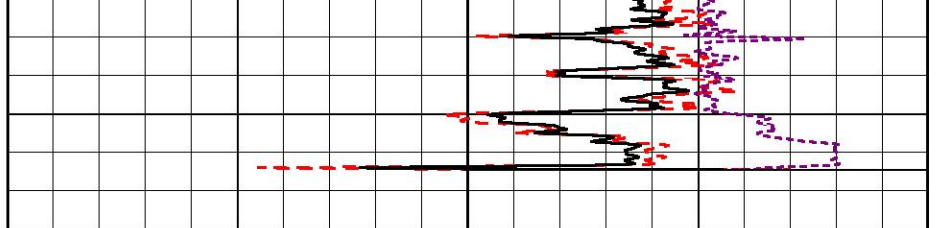
4100







4700



0	Gamma Ray (GAPI)	150
6	Caliper (in)	16

30	Compensated Density (pu)	-10
2	Bulk Density (g/cc)	3
15000	Line Tension (lb)	0
-0.25	Correction (g/cc)	0.25



MIDWEST WIRELINE

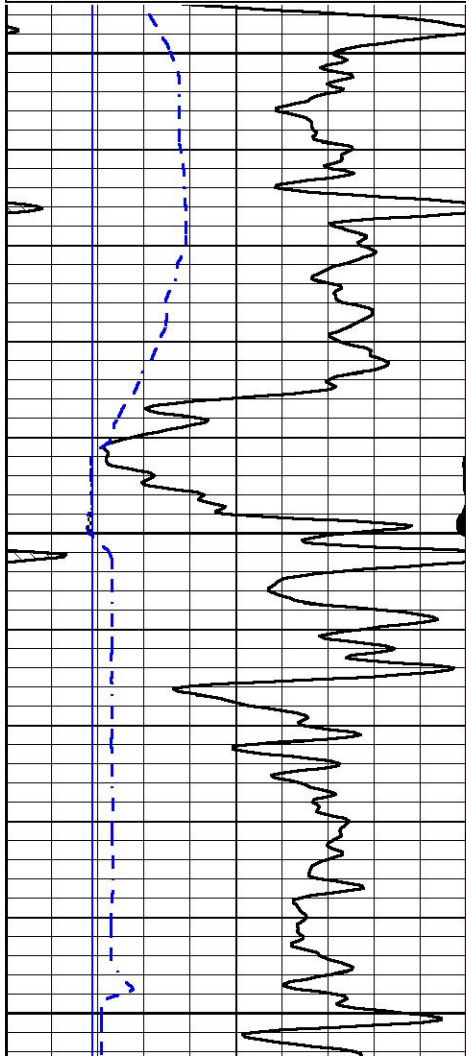
DETAIL SECTION

MAIN PASS

Database File arcadian_liam_3.db
 Dataset Pathname stackml/pass4.1
 Presentation Format _CNDLS~1
 Dataset Creation Mon Nov 15 03:10:23 2021
 Charted by Depth in Feet scaled 1:240

0	GR (GAPI)	150
6	DCAL (in)	16

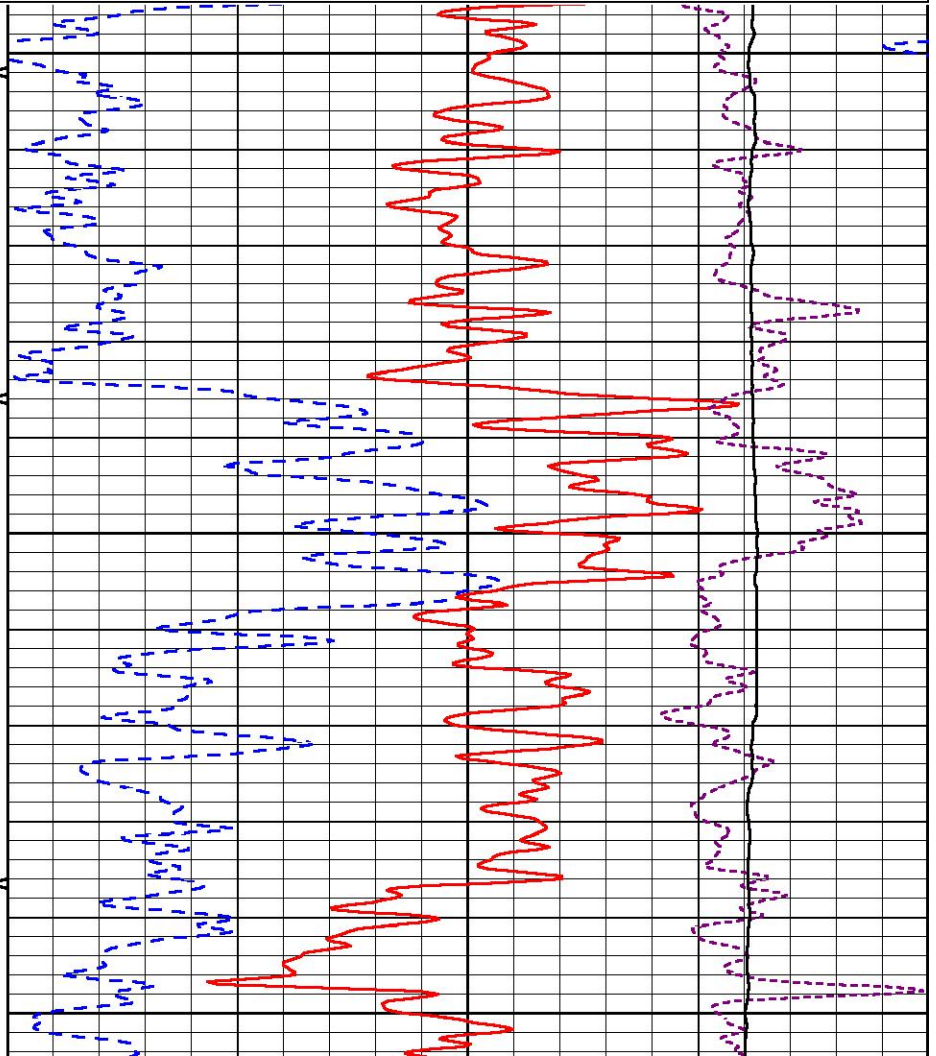
30	Compensated Neutron (pu)	-10
30	Compensated Density (pu)	-10
10000	Line Tension (lb)	0
-0.25	Correction (g/cc)	0.25

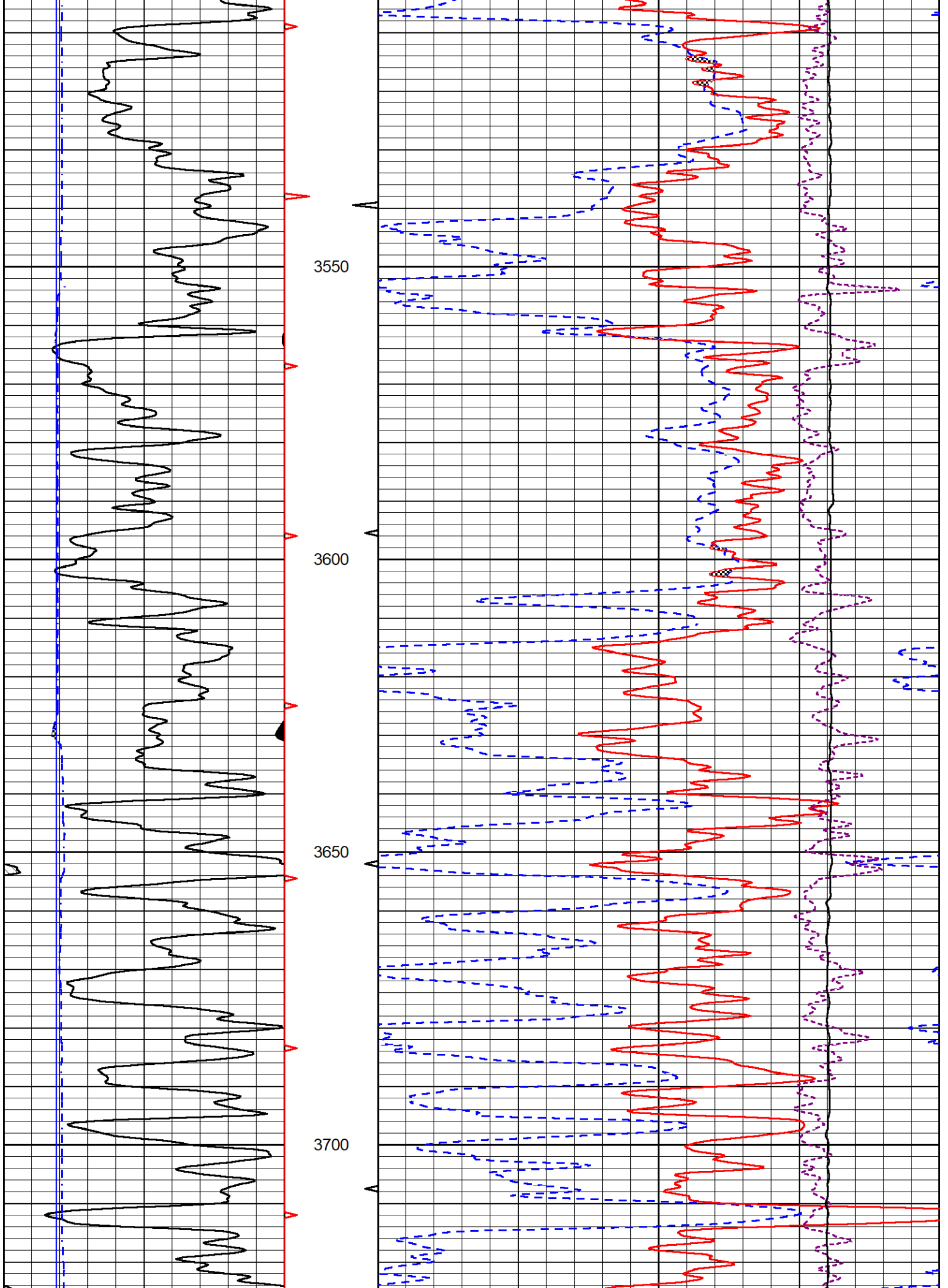


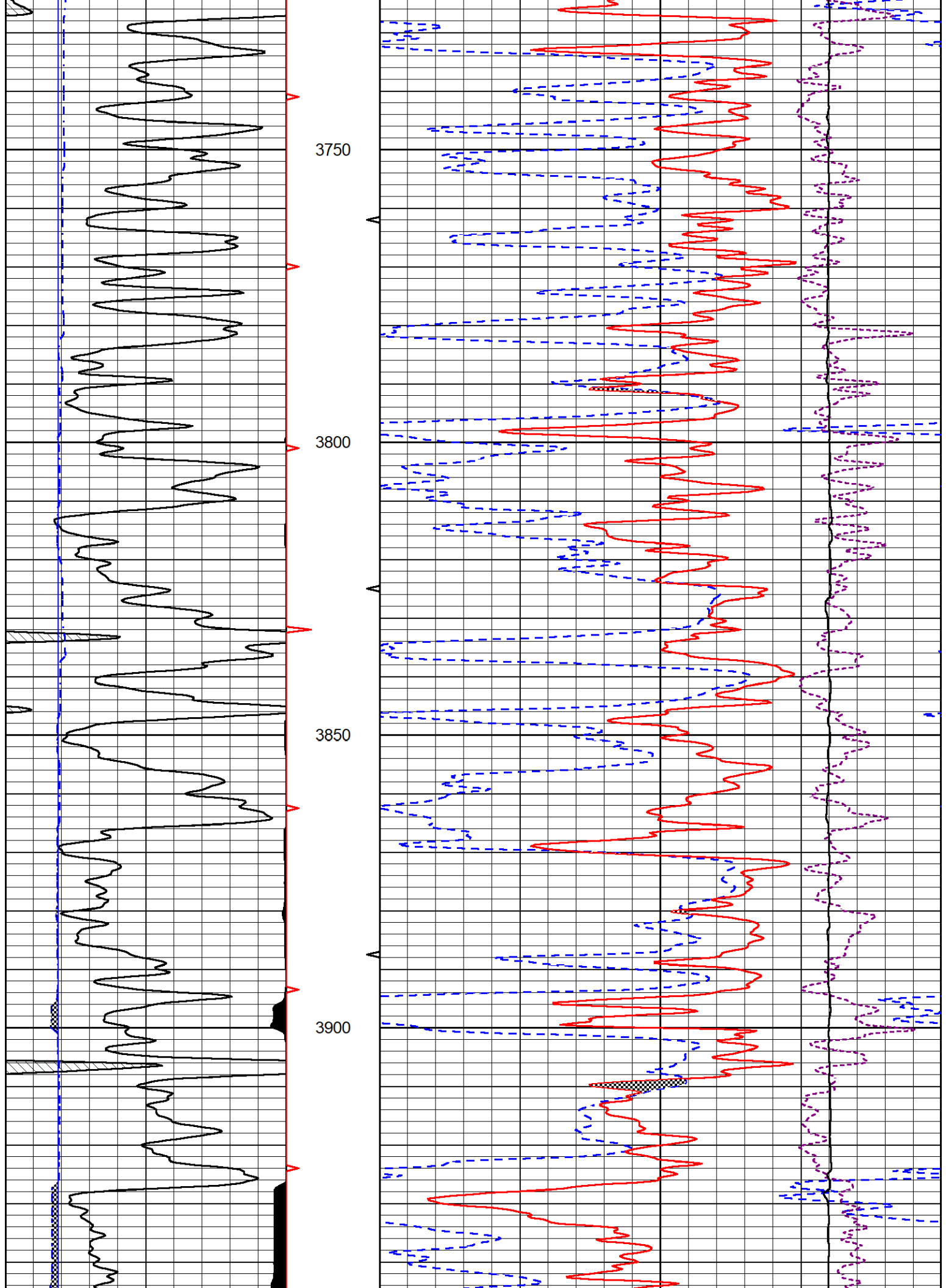
3400

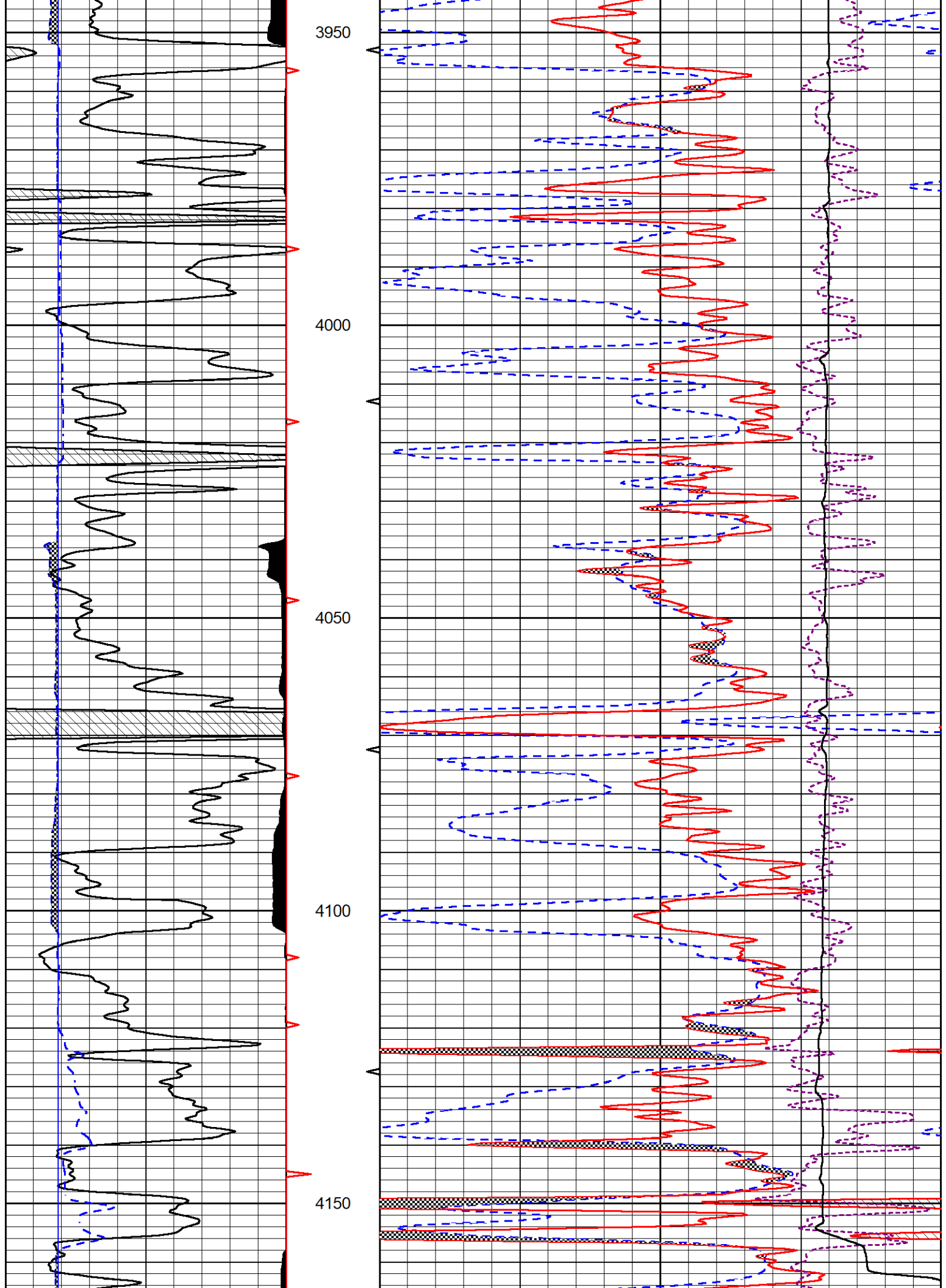
3450

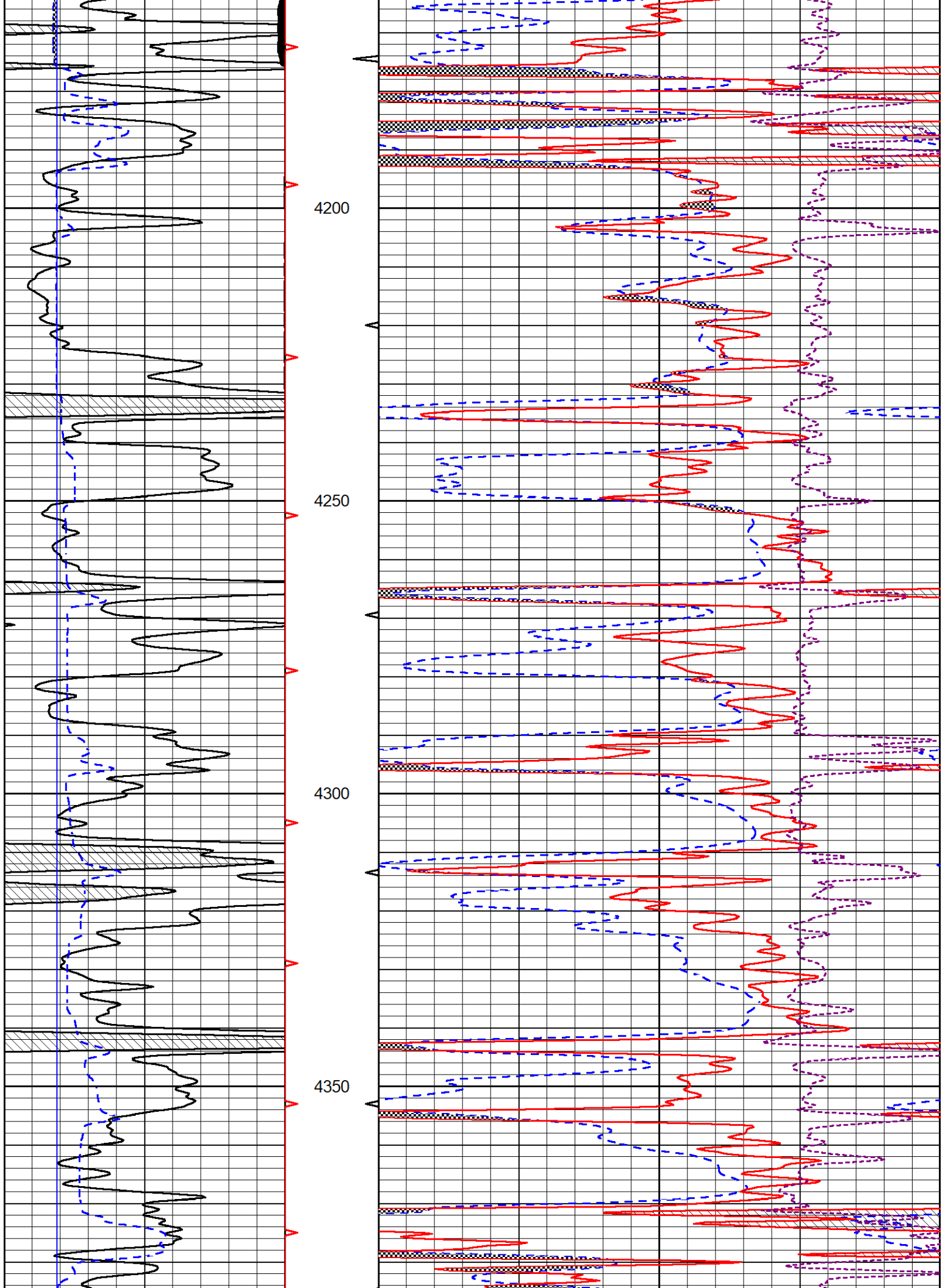
3500

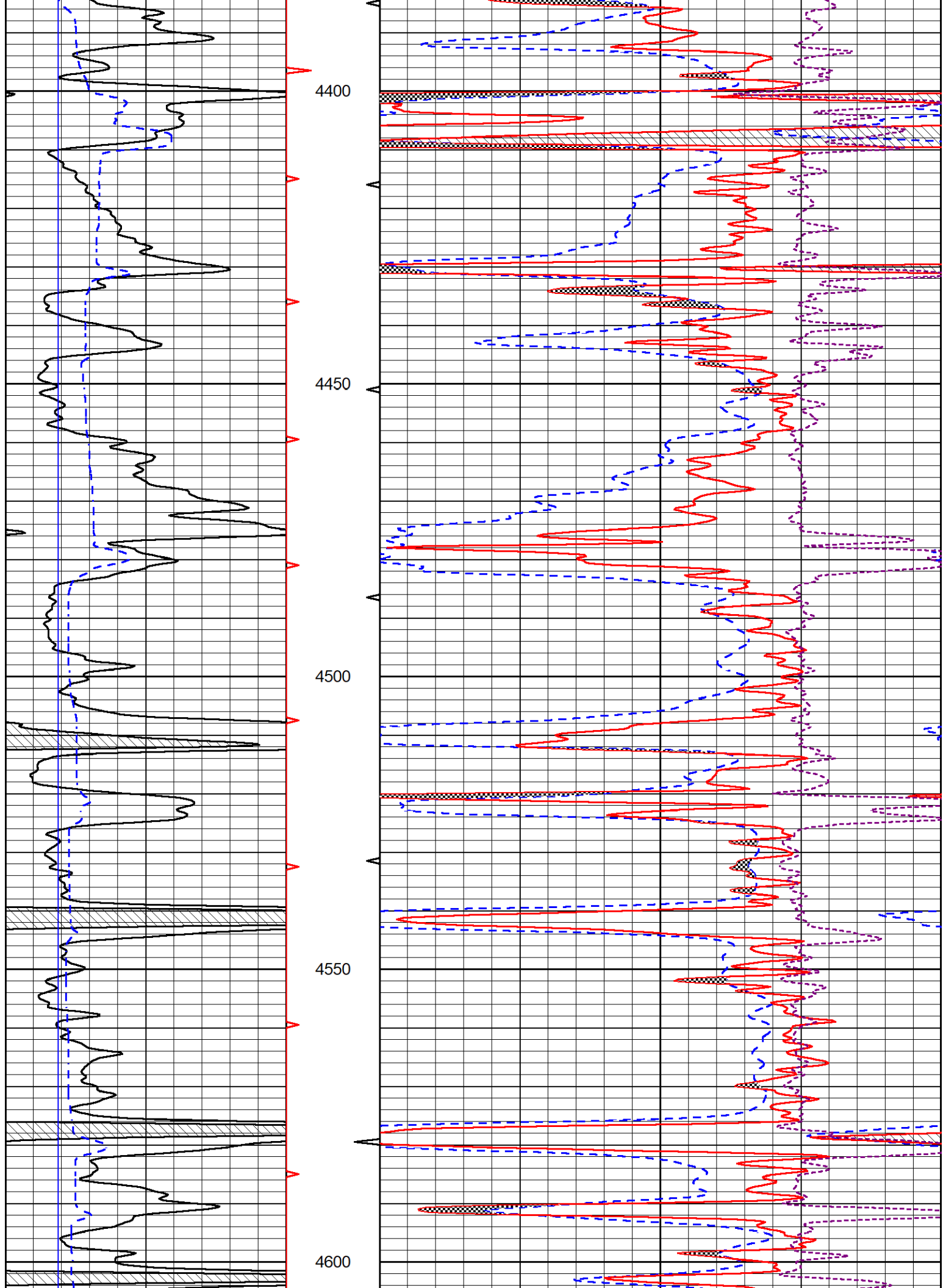


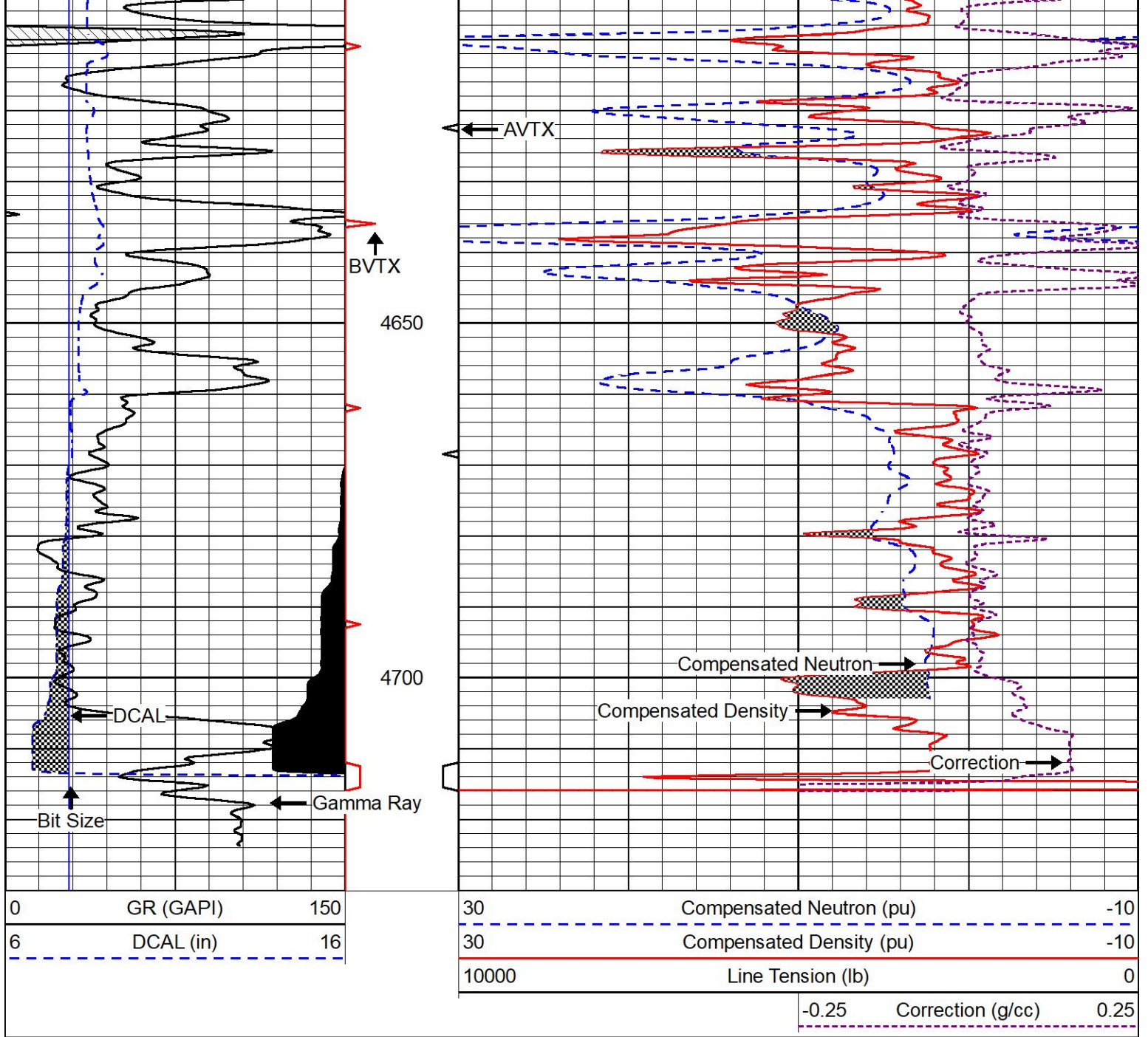








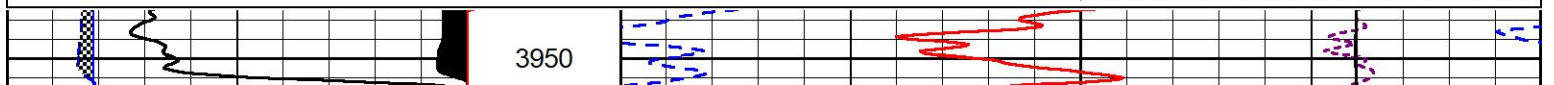
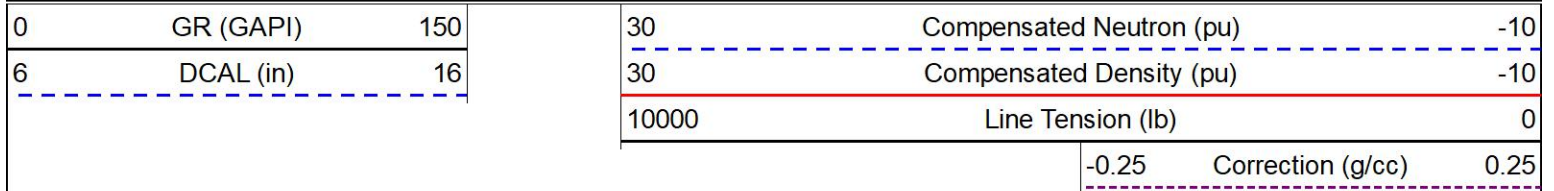


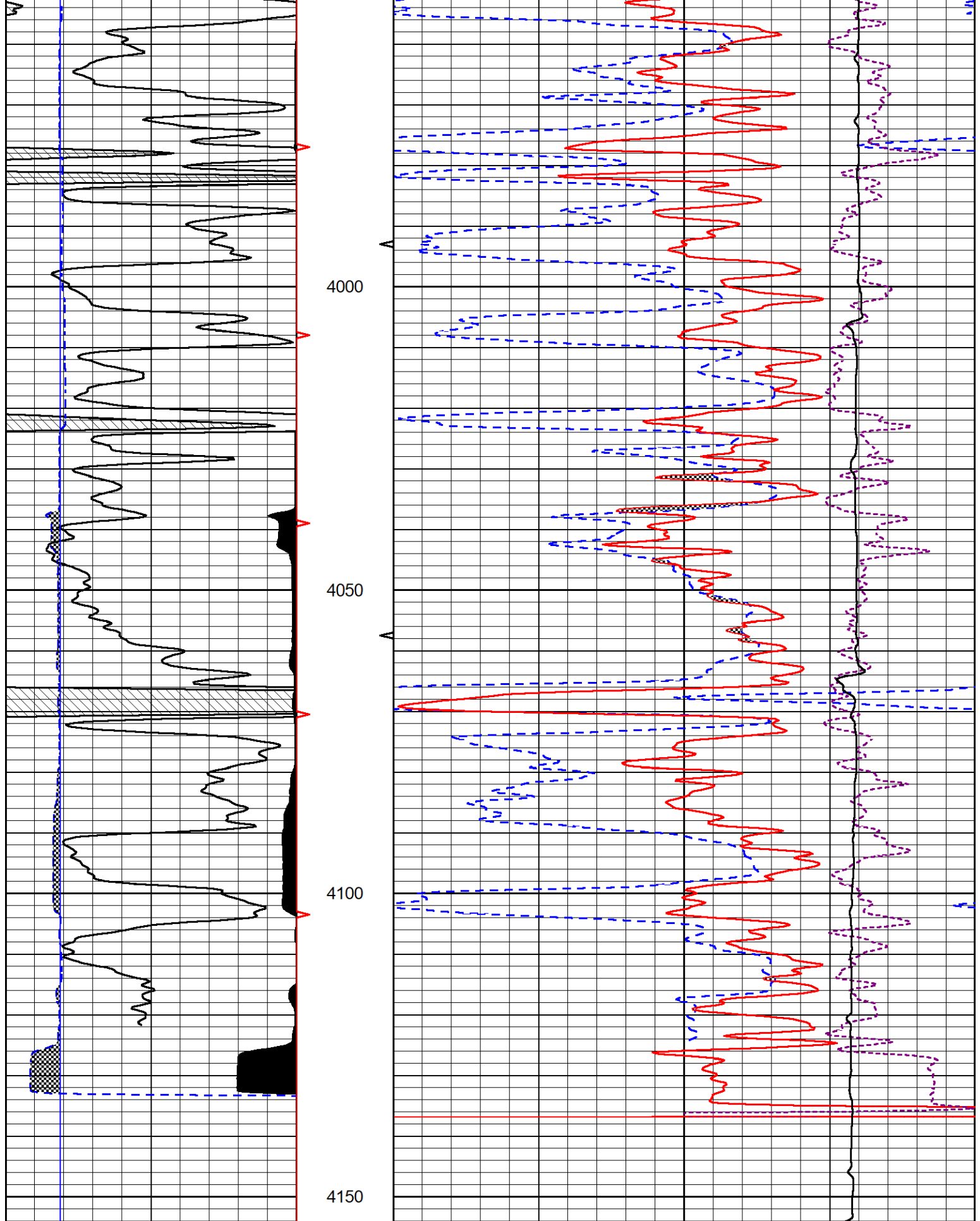


REPEAT SECTION

REPEAT PASS

Database File arcadian_liam_3.db
 Dataset Pathname stackml/pass2.1
 Presentation Format _CNDLS~1
 Dataset Creation Mon Nov 15 03:09:05 2021
 Charted by Depth in Feet scaled 1:240





0	GR (GAPI)	150
6	DCAL (in)	16

30	Compensated Neutron (pu)	-10
30	Compensated Density (pu)	-10
10000	Line Tension (lb)	0

-0.25	Correction (g/cc)	0.25
-------	-------------------	------

