

# MICRO LOG



**Company** SIROKY OIL MANAGEMENT  
**Well** FINCHAM #1-25  
**Field** BARNES  
**County** PRATT **State** KANSAS

**Location:** API #: 15-151-22529-0000  
 335' FSL & 335' FEL  
 NW - SE - SE - SE  
 SEC 25 TWP 27S RGE 12W  
**Permanent Datum** GROUND LEVEL **Elevation** 1728  
**Log Measured From** KELLY BUSHING **12' A.G.L.**  
**Drilling Measured From** KELLY BUSHING  
**Other Services** CDL/CNL/PE  
**DIL/SONIC**  
**Elevation** K.B. 1740  
 D.F. 1738  
 G.L. 1728

<b>Company</b>	SIROKY OIL MANAGEMENT
<b>Well</b>	FINCHAM #1-25
<b>Field</b>	BARNES
<b>County</b>	PRATT
<b>State</b>	KANSAS
<b>Date</b>	6/10/21
<b>Run Number</b>	TWO
<b>Depth Driller</b>	4496
<b>Depth Logger</b>	4494
<b>Bottom Logged Interval</b>	4492
<b>Top Log Interval</b>	3300
<b>Casing Driller</b>	10 3/4"@341'
<b>Casing Logger</b>	341
<b>Bit Size</b>	7 7/8"
<b>Type Fluid in Hole</b>	CHEMICAL MUD
<b>Density / Viscosity</b>	9.3/55
<b>pH / Fluid Loss</b>	10.5/12.4
<b>Source of Sample</b>	FLOWLINE
<b>Rm @ Meas. Temp</b>	.420@103F
<b>Rmf @ Meas. Temp</b>	.315@103F
<b>Rmc @ Meas. Temp</b>	.504@103F
<b>Source of Rmf / Rmc</b>	MEASUREMENT
<b>Rm @ BHT</b>	.358@121F
<b>Time Circulation Stopped</b>	4 HOURS
<b>Time Logger on Bottom</b>	10:30 P.M.
<b>Maximum Recorded Temperature</b>	121F
<b>Equipment Number</b>	922339
<b>Location</b>	HAYS, KANSAS
<b>Recorded By</b>	JEFF LUEBBERS
<b>Witnessed By</b>	RYAN DAVIS
	BRIAN SIROKY
	SPENCER SIROKY

<<< Fold Here >>>

All interpretations are opinions based on inferences from electrical or other measurements and we cannot and do not guarantee the accuracy or correctness of any interpretation, and we shall not, except in the case of gross or willful negligence on our part, be liable or responsible for any loss, costs, damages, or expenses incurred or sustained by anyone resulting from any interpretation made by any of our officers, agents or employees. These interpretations are also subject to our general terms and conditions set out in our current Price Schedule.

15-151-22529-0000 Comments

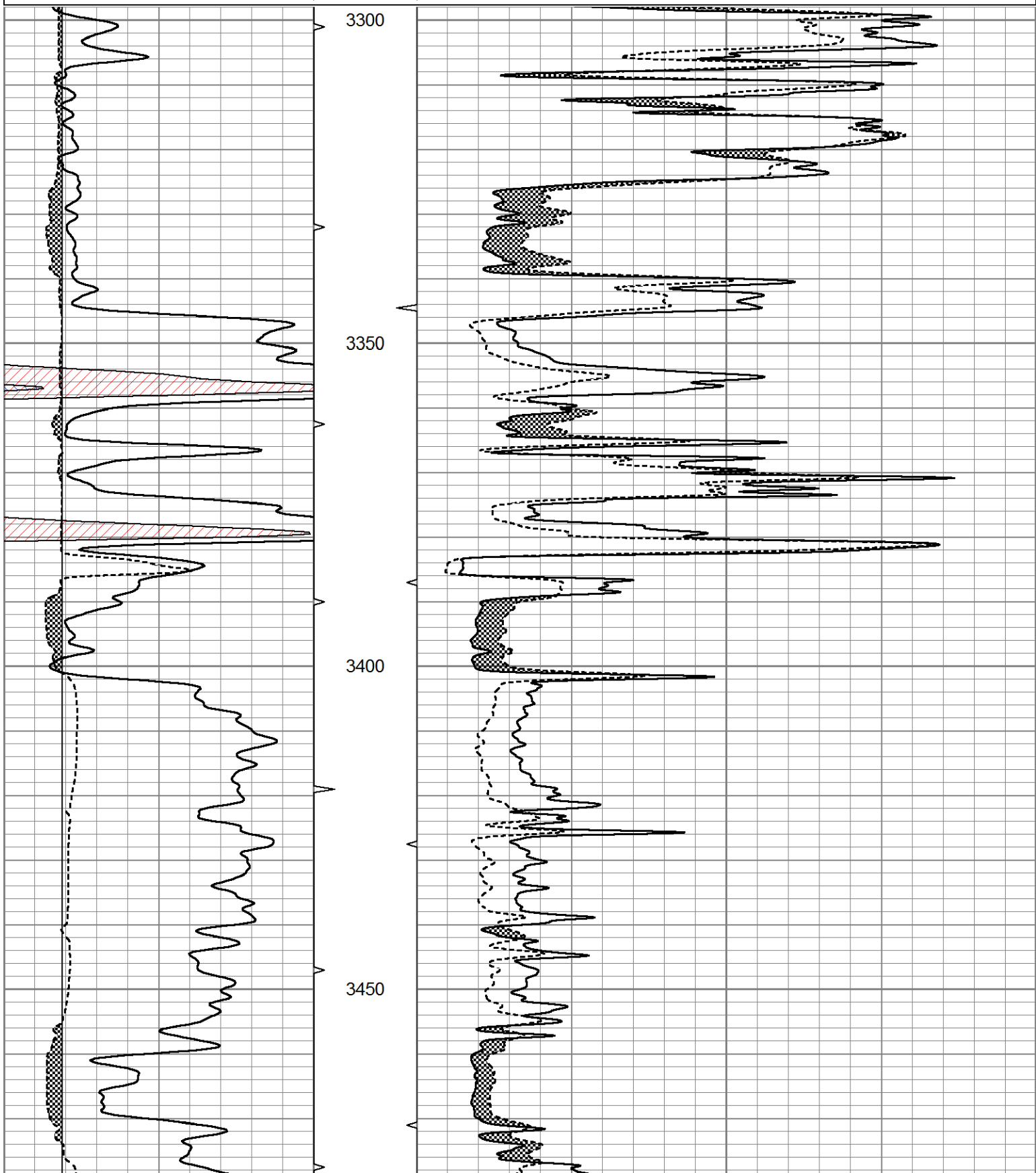
THANK YOU FOR USING ELI WIRELINE HAYS, KANSAS (785) 628-6395  
 DIRECTIONS  
 PRATT, KS. (HWY 400 & 281) 9E. TO "100TH AVE., N. ACROSS 400 THEN 1W. ON DIRT TO "90TH AVE.", 1N., W. INTO

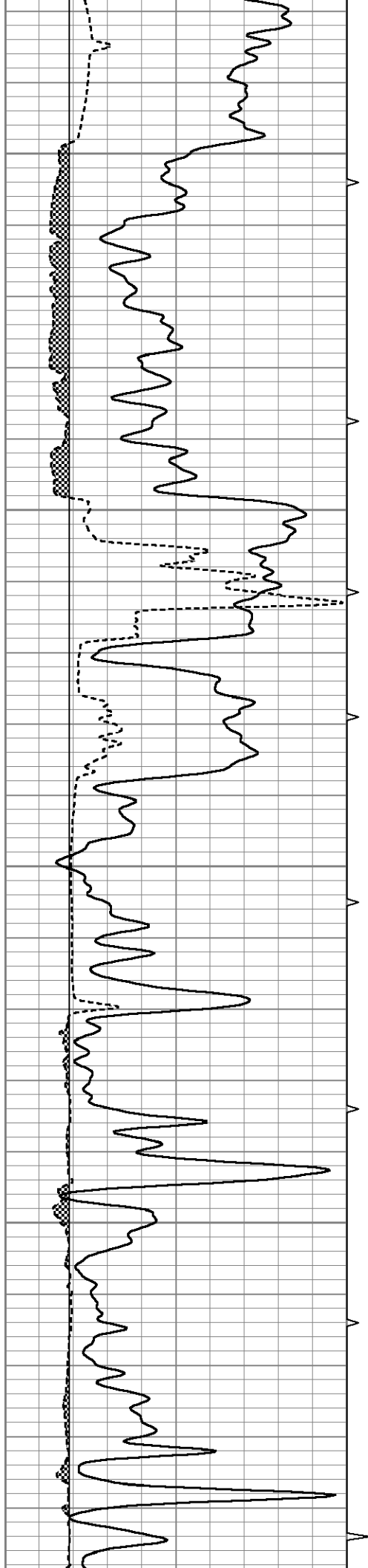


# MAIN SECTION

Database File 5275pe.db  
 Dataset Pathname pass6.1  
 Presentation Format micro  
 Dataset Creation Thu Jun 10 23:44:01 2021  
 Charted by Depth in Feet scaled 1:240

0	GR (GAPI)	150	ABHV	0	MEL20 (Ohm-m)	40
6	MELCAL (in)	16	10 (ft3)	0	MEL15 (Ohm-m)	40
			ABHV			
			0 (ft3)	10		



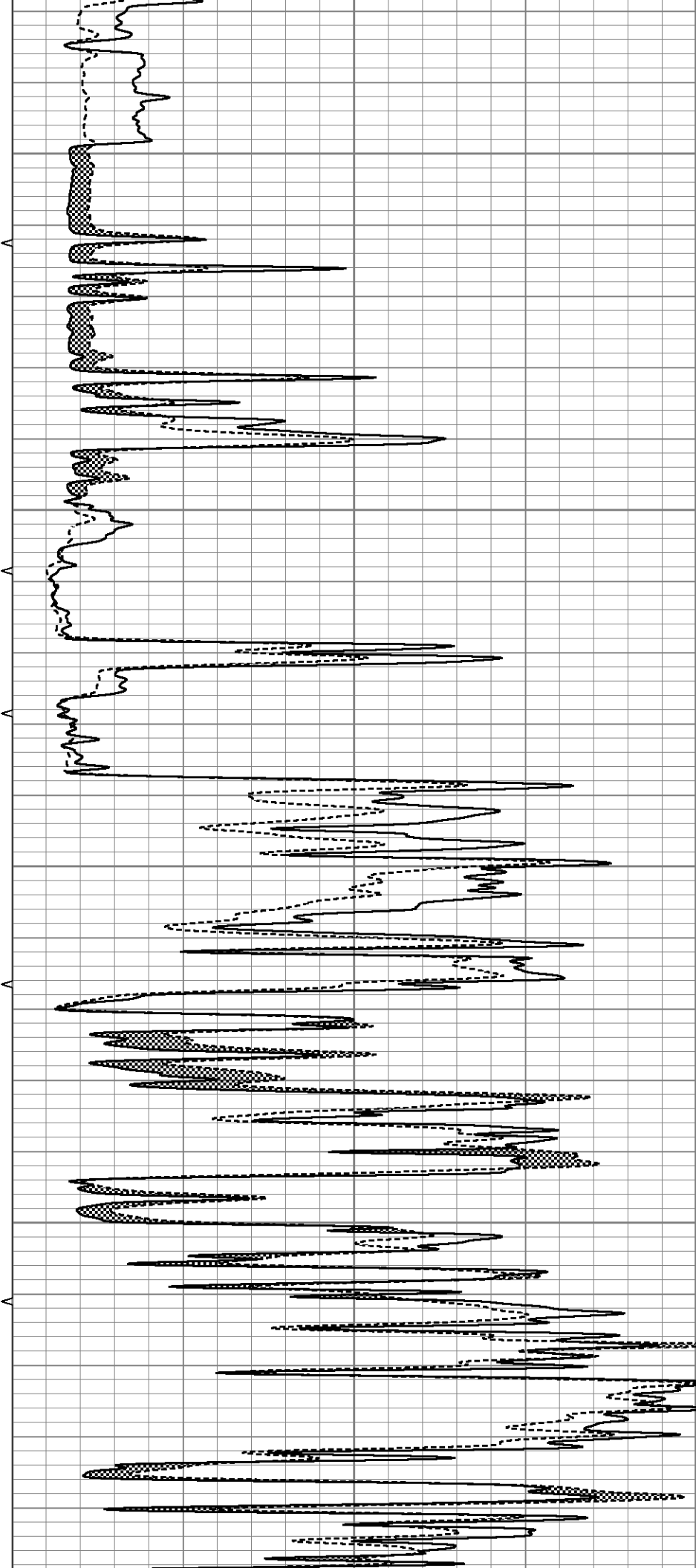


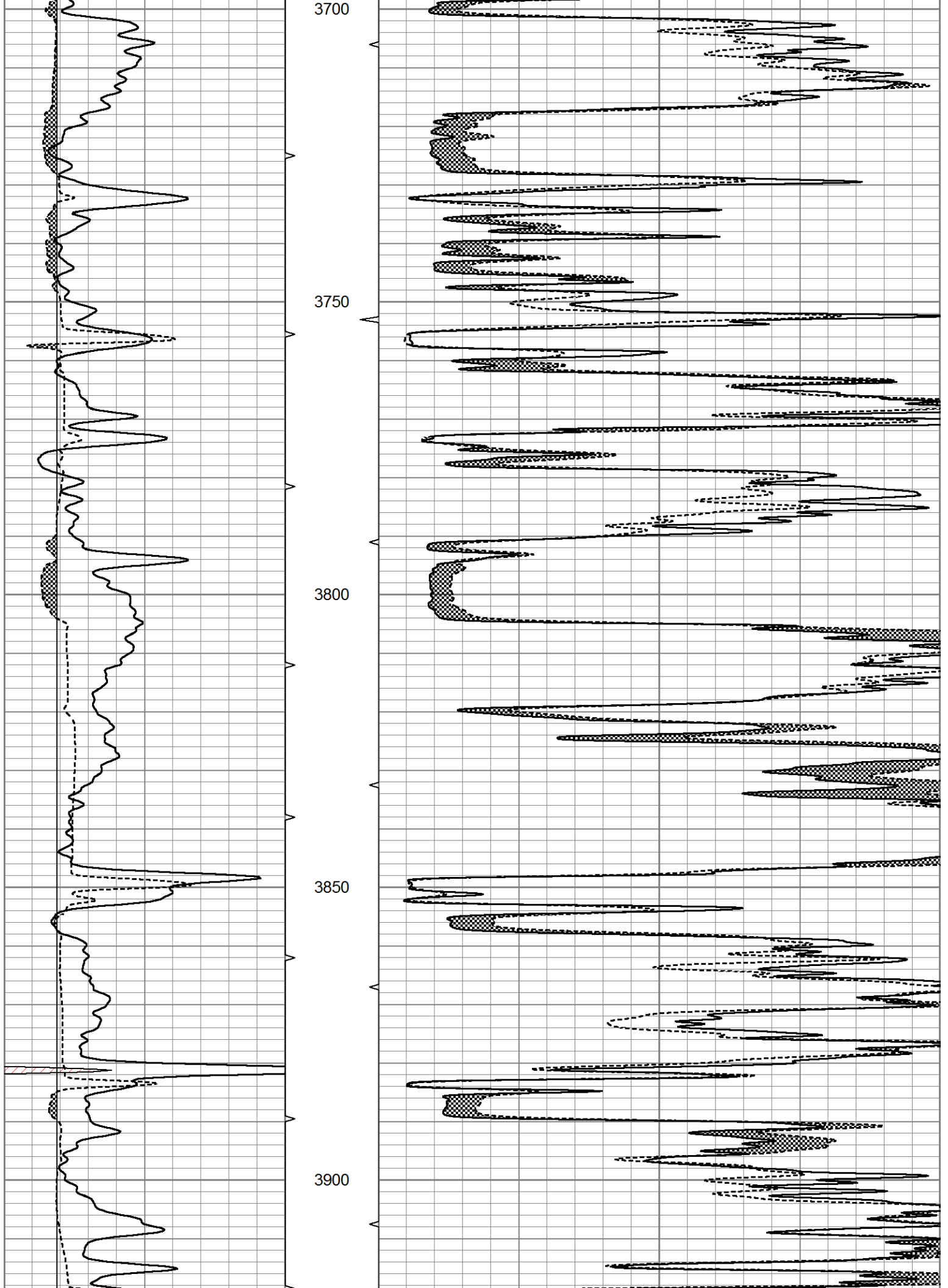
3500

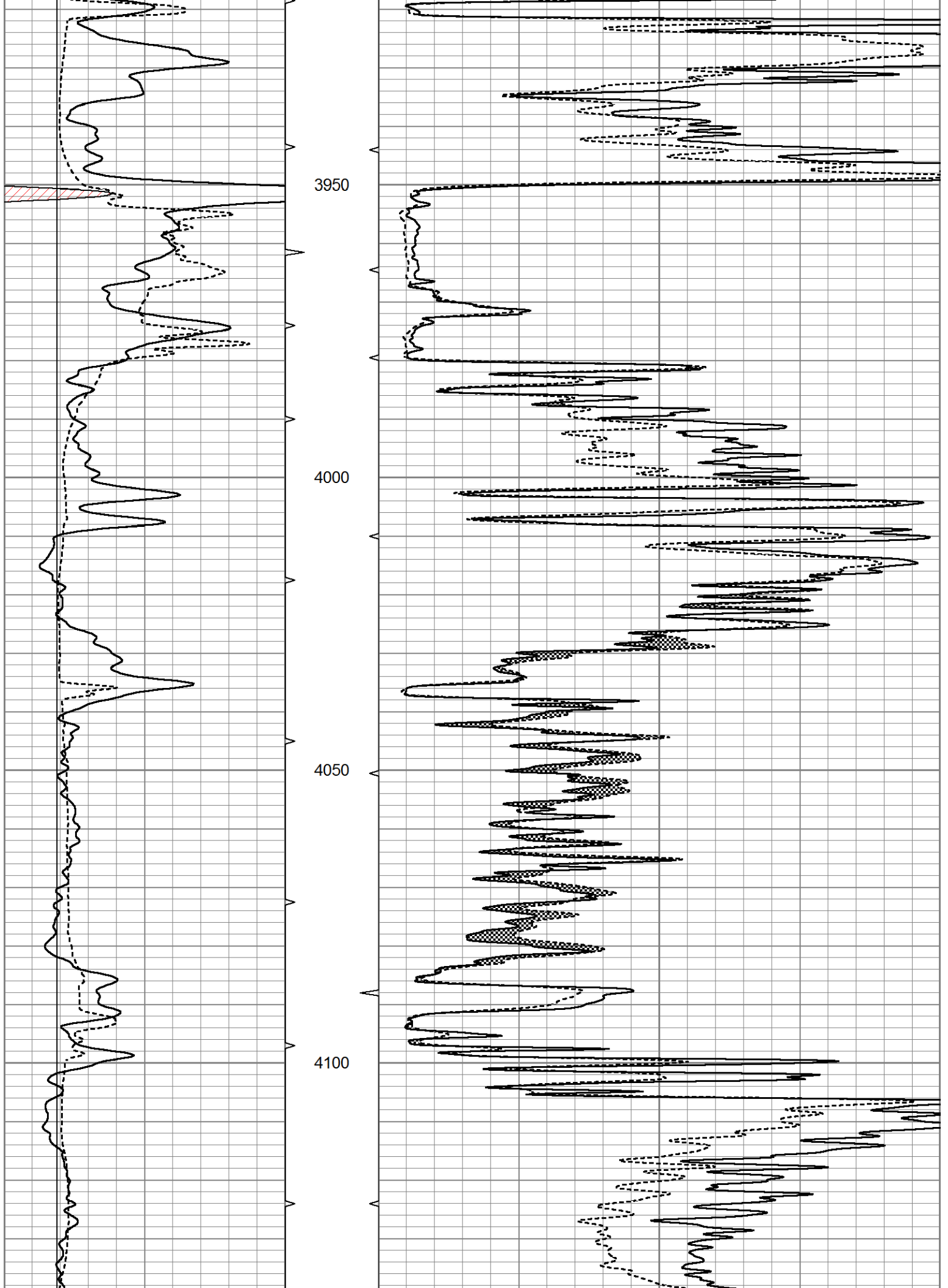
3550

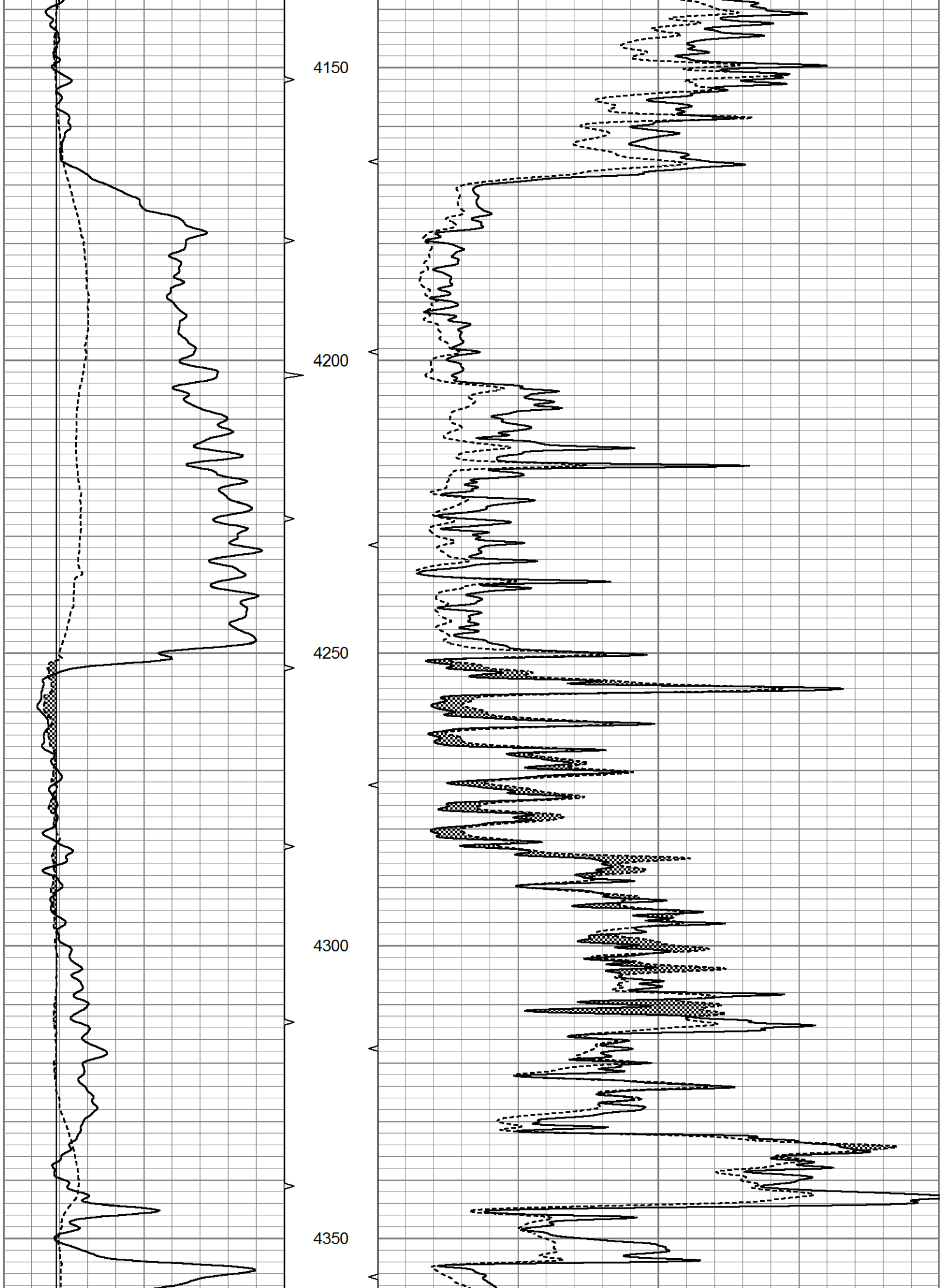
3600

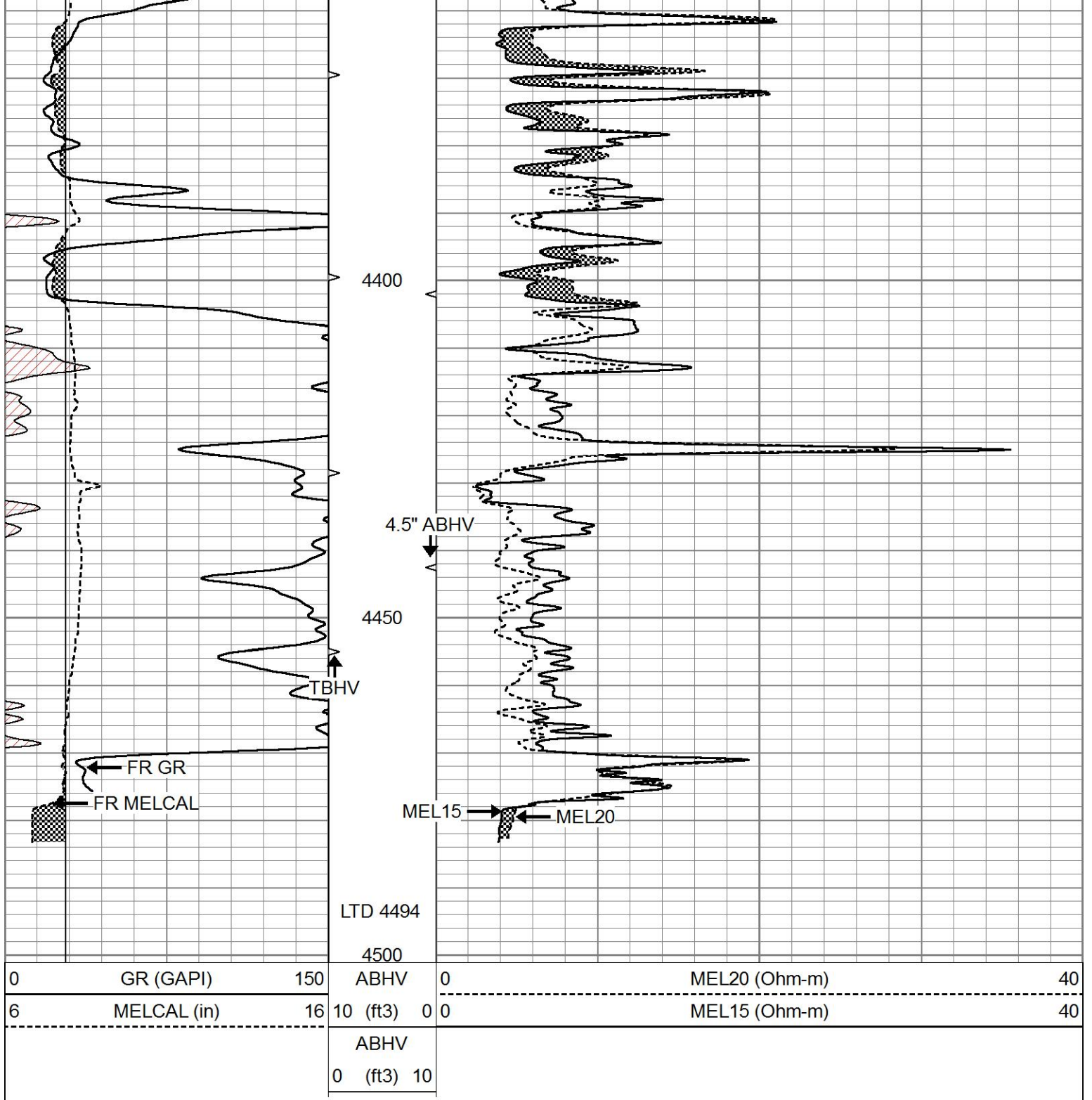
3650









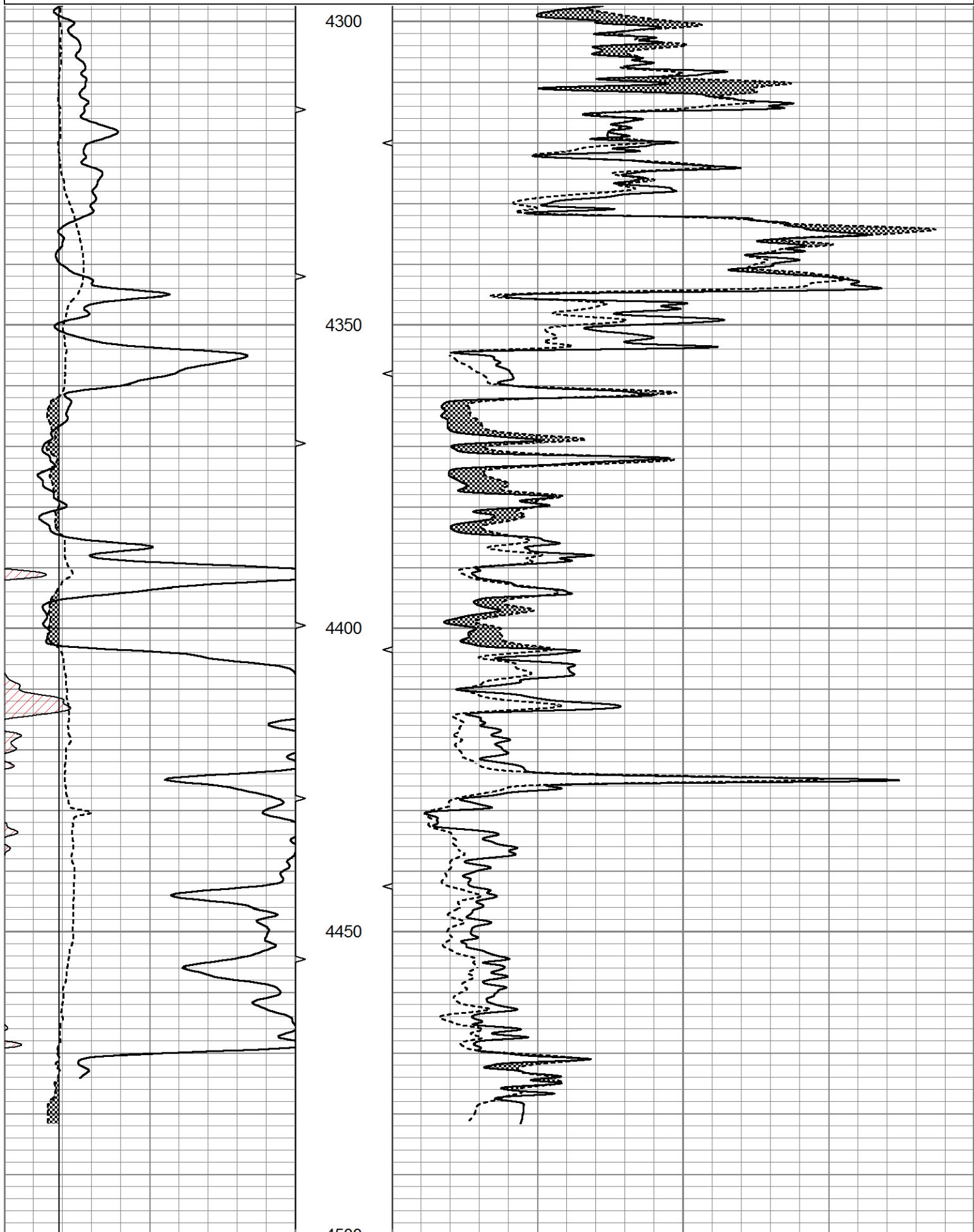


# REPEAT SECTION

Database File 5275pe.db  
 Dataset Pathname pass5.1  
 Presentation Format micro  
 Dataset Creation Thu Jun 10 23:19:53 2021  
 Charted by Depth in Feet scaled 1:240

0	GR (GAPI)	150	ABHV	0	MEL20 (Ohm-m)	40
6	MELCAL (in)	16	10 (ft3)	0 0	MEL15 (Ohm-m)	40

ABHV  
0 (ft3) 10



4300

4350

4400

4450

4500

0 GR (GAPI) 150

6 MELCAL (in) 16

ABHV

10 (ft3) 0 0

0 MEL20 (Ohm-m)

MEL15 (Ohm-m)

40

40

ABHV
0 (ft3) 10

### Calibration Report

Database File 5275pe.db  
Dataset Pathname pass6.1  
Dataset Creation Thu Jun 10 23:44:01 2021

#### MICRO Calibration Report

Serial Number: 070912  
Tool Model: ProbeN  
Performed: Thu Jun 10 23:36:23 2021

Caliper Calibration: Gain=3.509 Offset=0.561

	Low Cal	High Cal
References	8.000	16.000
Readings	2.120	4.400

1.5" Calibration: Gain=30.000 Offset=0.500

	Low Cal	High Cal
References	0.000	20.000
Readings	0.002	1.239

2" Calibration: Gain=48.000 Offset=0.000

	Low Cal	High Cal
References	0.000	20.000
Readings	0.003	1.075

#### Gamma Ray Calibration Report

Serial Number: 070559  
Tool Model: OPEN\_GR  
Performed: Wed Apr 21 02:21:11 2021

Calibrator Value: 1.0 GAPI

Background Reading: 0.0 cps  
Calibrator Reading: 1.0 cps

Sensitivity: 0.3600 GAPI/cps