



**COMPENSATED  
DENSITY / NEUTRON  
PE LOG**

**Company** SIROKY OIL MANAGEMENT  
**Well** FINCHAM #1-25  
**Field** BARNES  
**County** PRATT **State** KANSAS

**Location:** API #: 15-151-22529-0000  
 335' FSL & 335' FEL  
 NW - SE - SE - SE  
 SEC 25 TWP 27S RGE 12W  
**Permanent Datum** GROUND LEVEL **Elevation** 1728  
**Log Measured From** KELLY BUSHING **12' A.G.L.**  
**Drilling Measured From** KELLY BUSHING  
**Other Services**  
 DILMEL  
 SONIC  
**Elevation**  
 K.B. 1740  
 D.F. 1738  
 G.L. 1728

Date	6/10/21
Run Number	ONE
Depth Driller	4496
Depth Logger	4494
Bottom Logged Interval	4470
Top Log Interval	1600
Casing Driller	10 3/4"@341'
Casing Logger	341
Bit Size	7 7/8"
Type Fluid in Hole	CHEMICAL MUD
Density / Viscosity	9.3/55
pH / Fluid Loss	10.5/12.4
Source of Sample	FLOWLINE
Rm @ Meas. Temp	.420@103F
Rmf @ Meas. Temp	.315@103F
Rmc @ Meas. Temp	.504@103F
Source of Rmf / Rmc	MEASUREMENT
Rm @ BHT	.358@121F
Time Circulation Stopped	2.5 HOURS
Time Logger on Bottom	8.45 P.M.
Maximum Recorded Temperature	121F
Equipment Number	922339
Location	HAYS, KANSAS
Recorded By	JEFF LUEBBERS
Witnessed By	RYAN DAVIS
	BRIAN SIROKY
	SPENCER SIROKY

<<< Fold Here >>>

All interpretations are opinions based on inferences from electrical or other measurements and we cannot and do not guarantee the accuracy or correctness of any interpretation, and we shall not, except in the case of gross or willful negligence on our part, be liable or responsible for any loss, costs, damages, or expenses incurred or sustained by anyone resulting from any interpretation made by any of our officers, agents or employees. These interpretations are also subject to our general terms and conditions set out in our current Price Schedule.

15-151-22529-0000 Comments

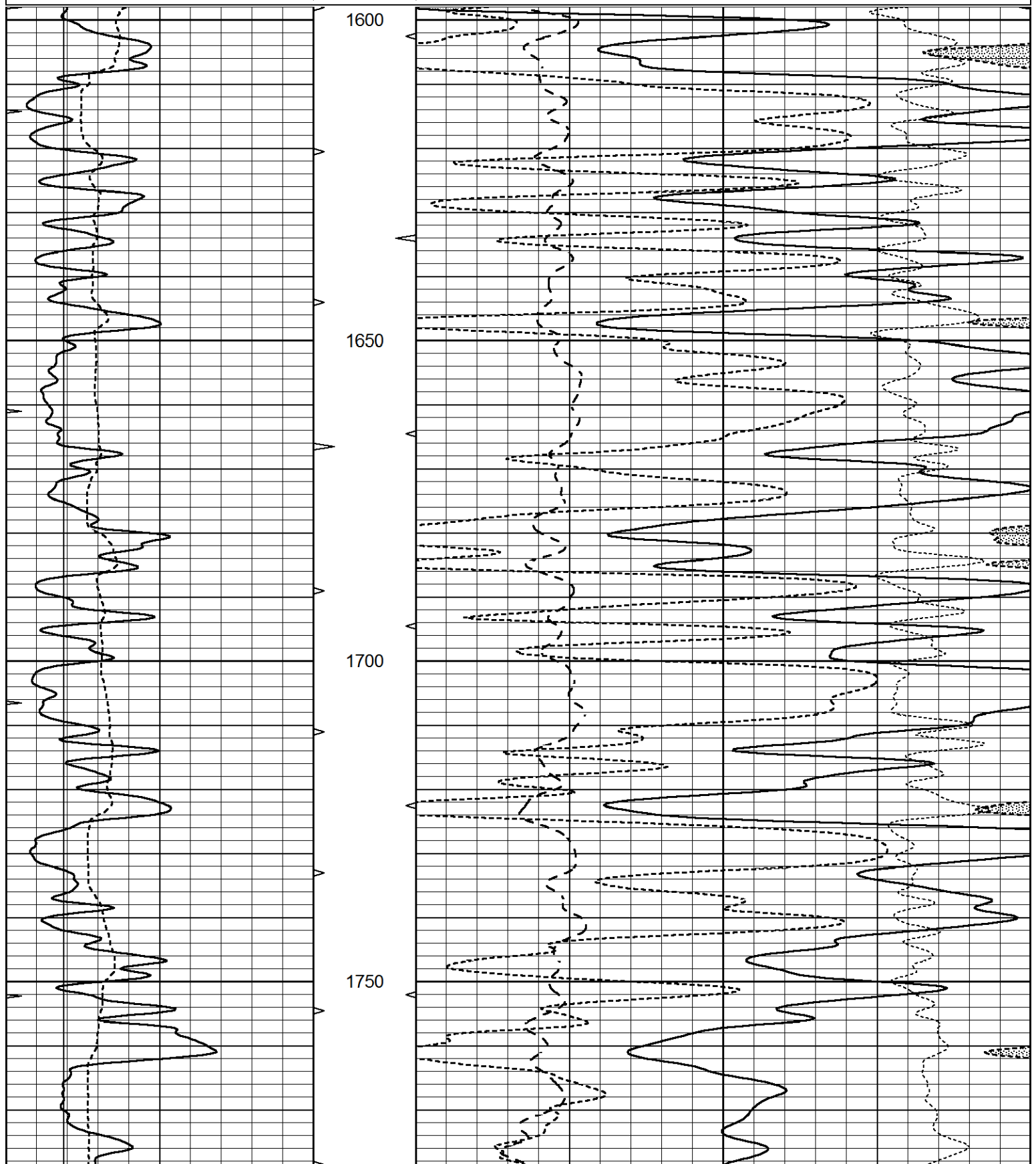
THANK YOU FOR USING ELI WIRELINE HAYS, KANSAS (785) 628-6395  
 DIRECTIONS  
 PRATT, KS. (HWY 400 & 281) 9E. TO "100TH AVE., N. ACROSS 400 THEN 1W. ON DIRT TO "90TH AVE.", 1N., W. INTO

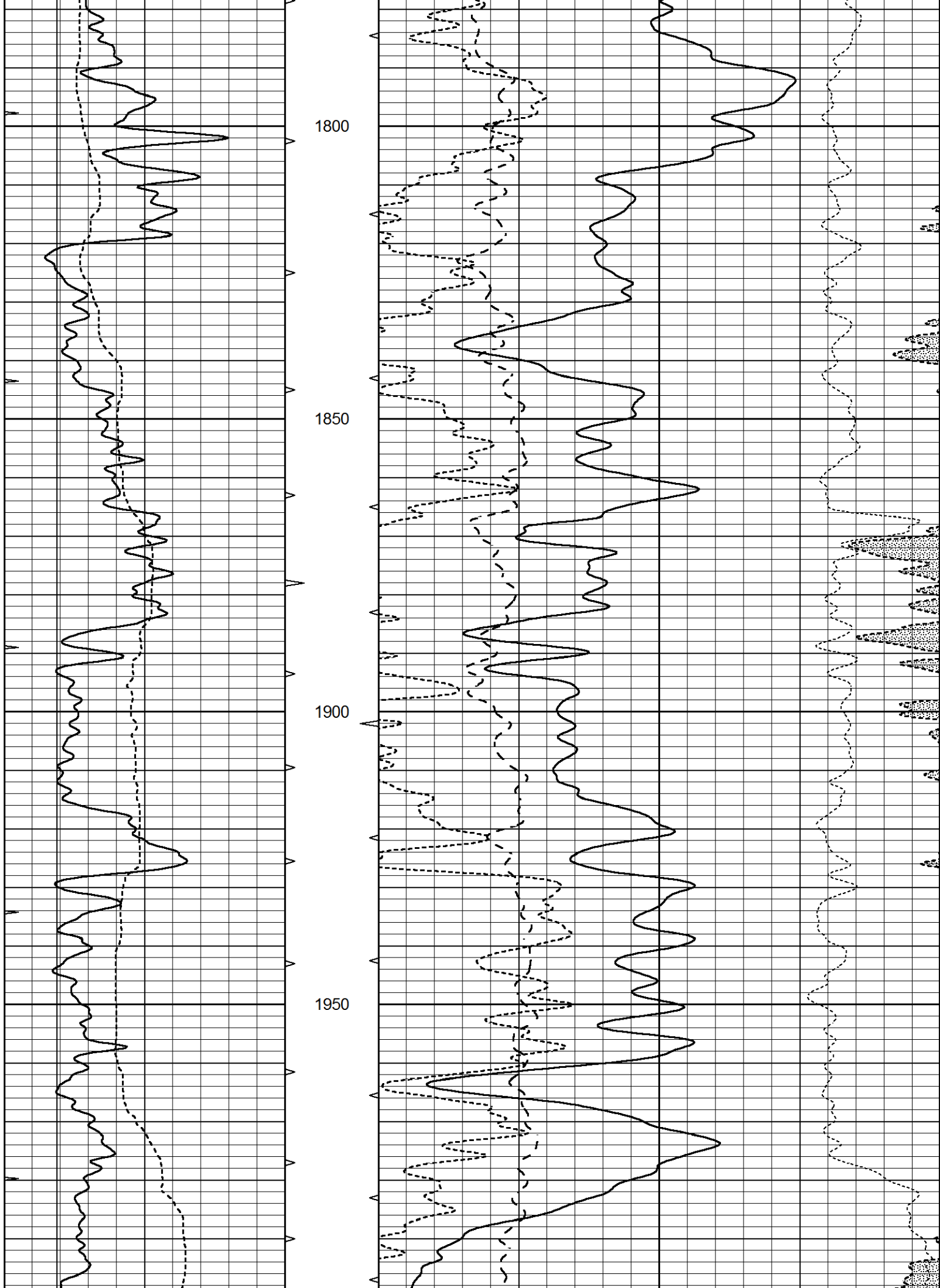


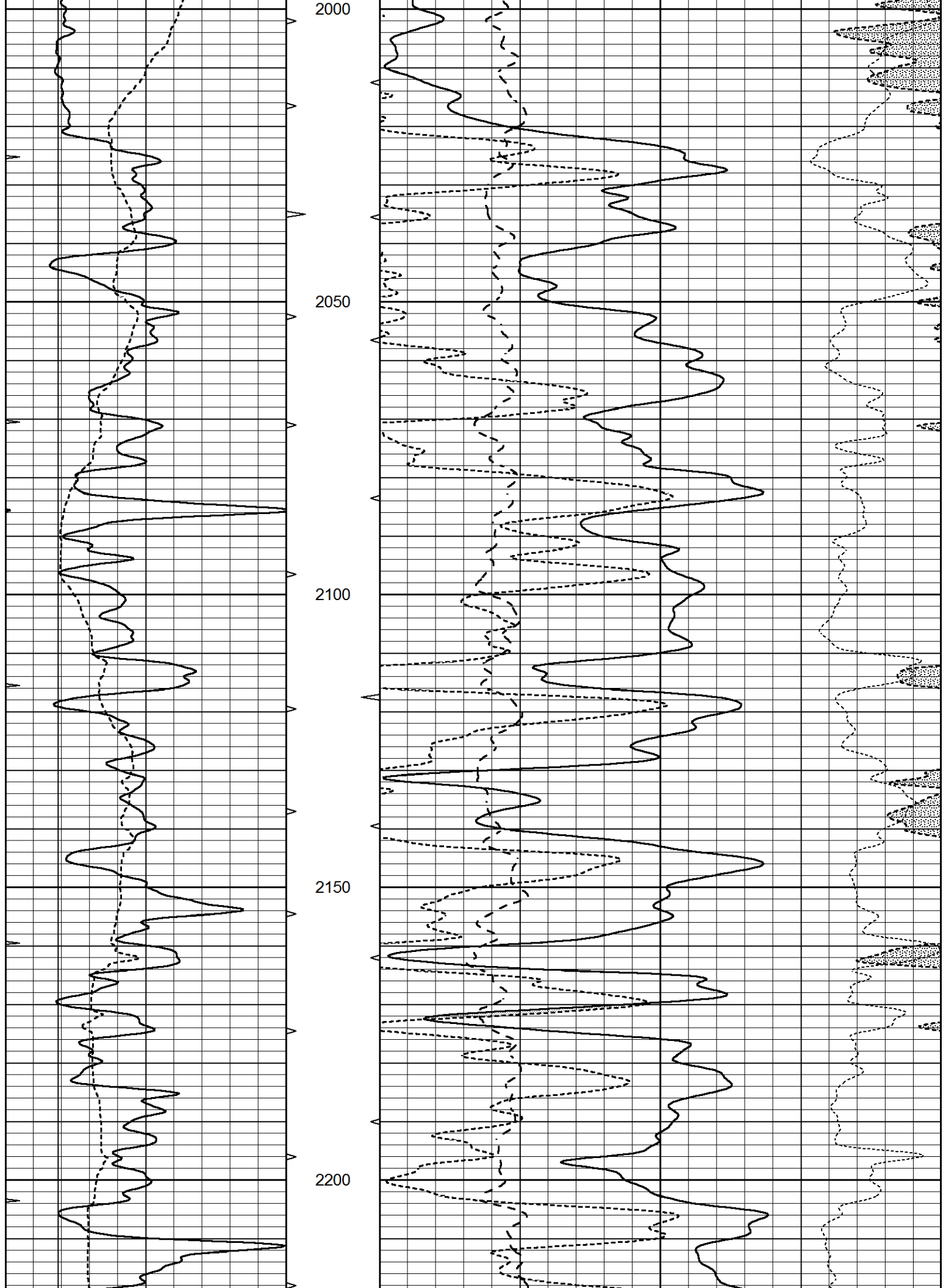
# MAIN SECTION

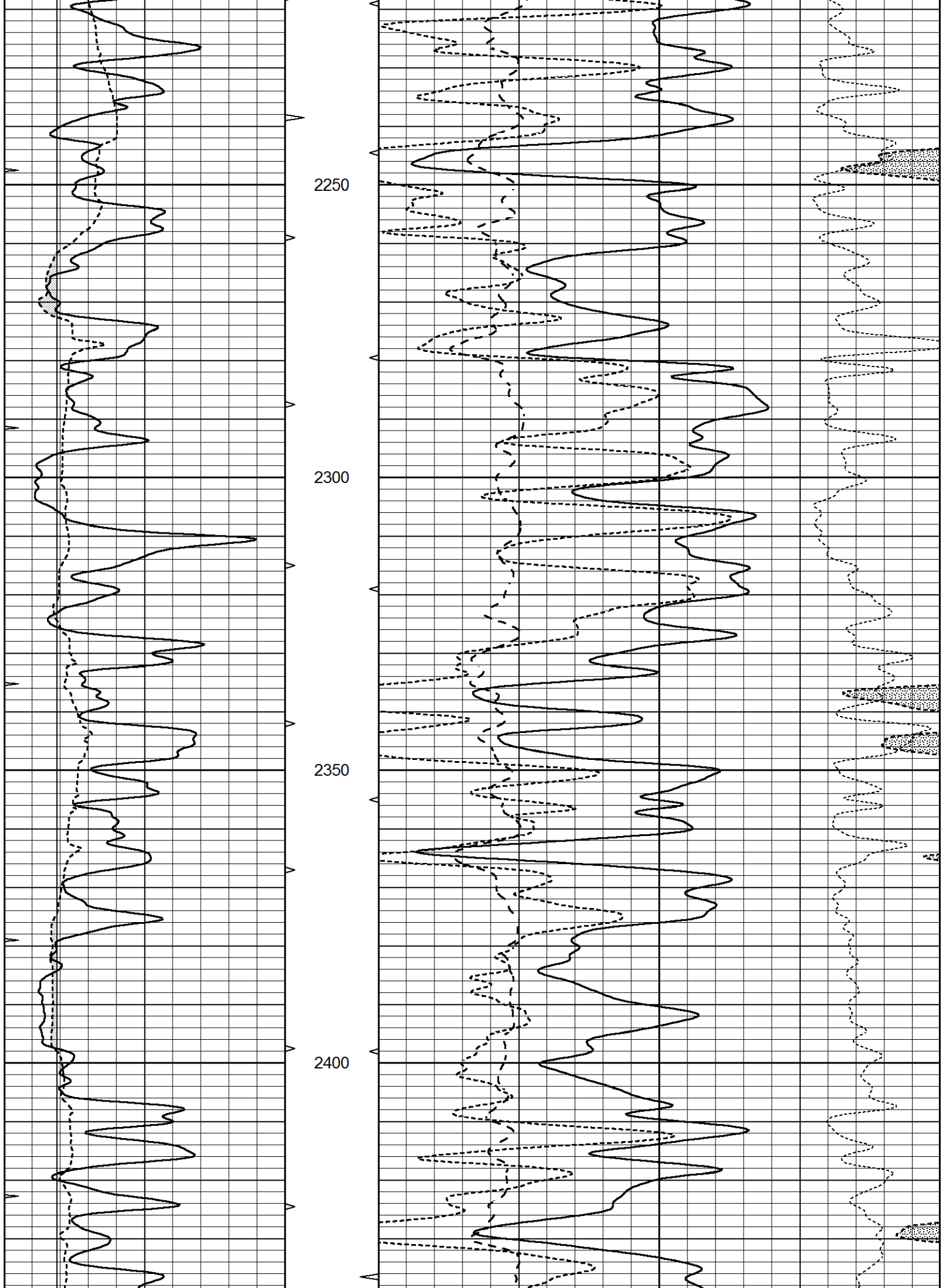
Database File 5275pe.db  
 Dataset Pathname pass3.1M  
 Presentation Format ldt\_neu  
 Dataset Creation Thu Jun 10 22:22:17 2021  
 Charted by Depth in Feet scaled 1:240

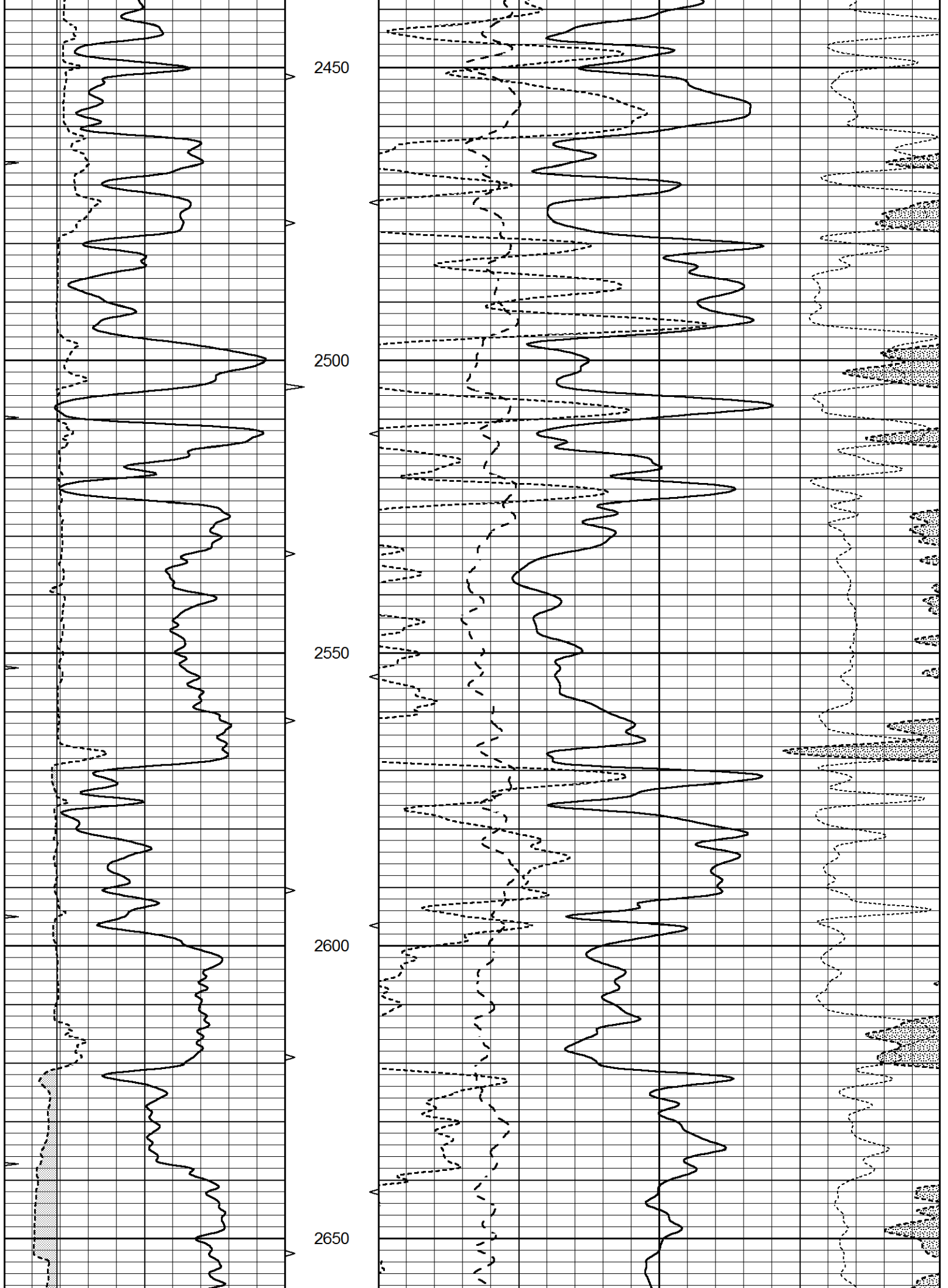
0	GAMMA RAY (GAPI)	150	ABHV	30	COMPENSATED DENSITY (pu)			-10	
6	CALIPER (in)	16	10 (ft3)	0	COMPENSATED NEUTRON (pu)			-10	
0	MINMK	20	TBHV	0	PE	10	-0.25	CORRECTION (g/cc)	0.25
			0 (ft3)	10					

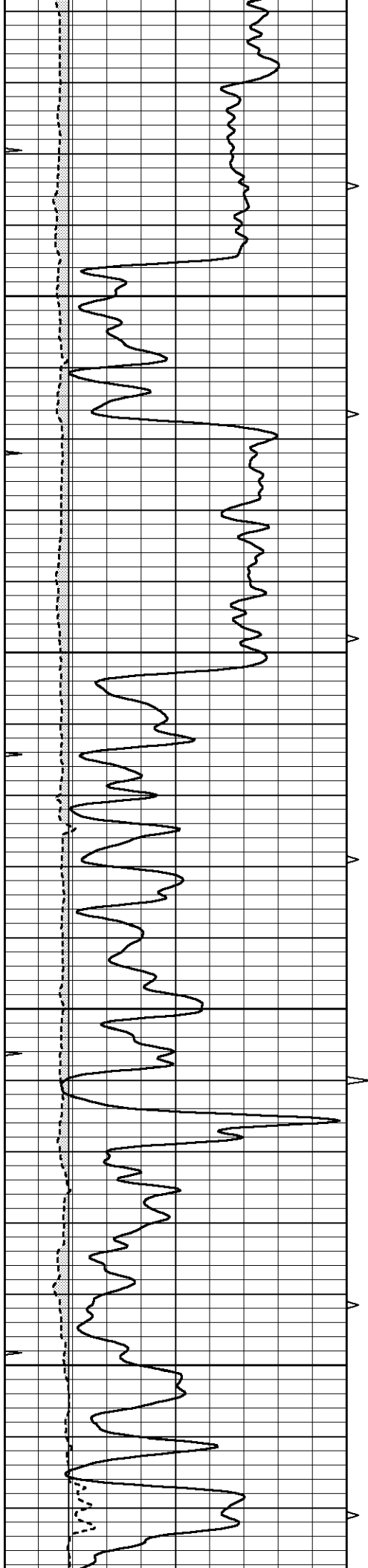










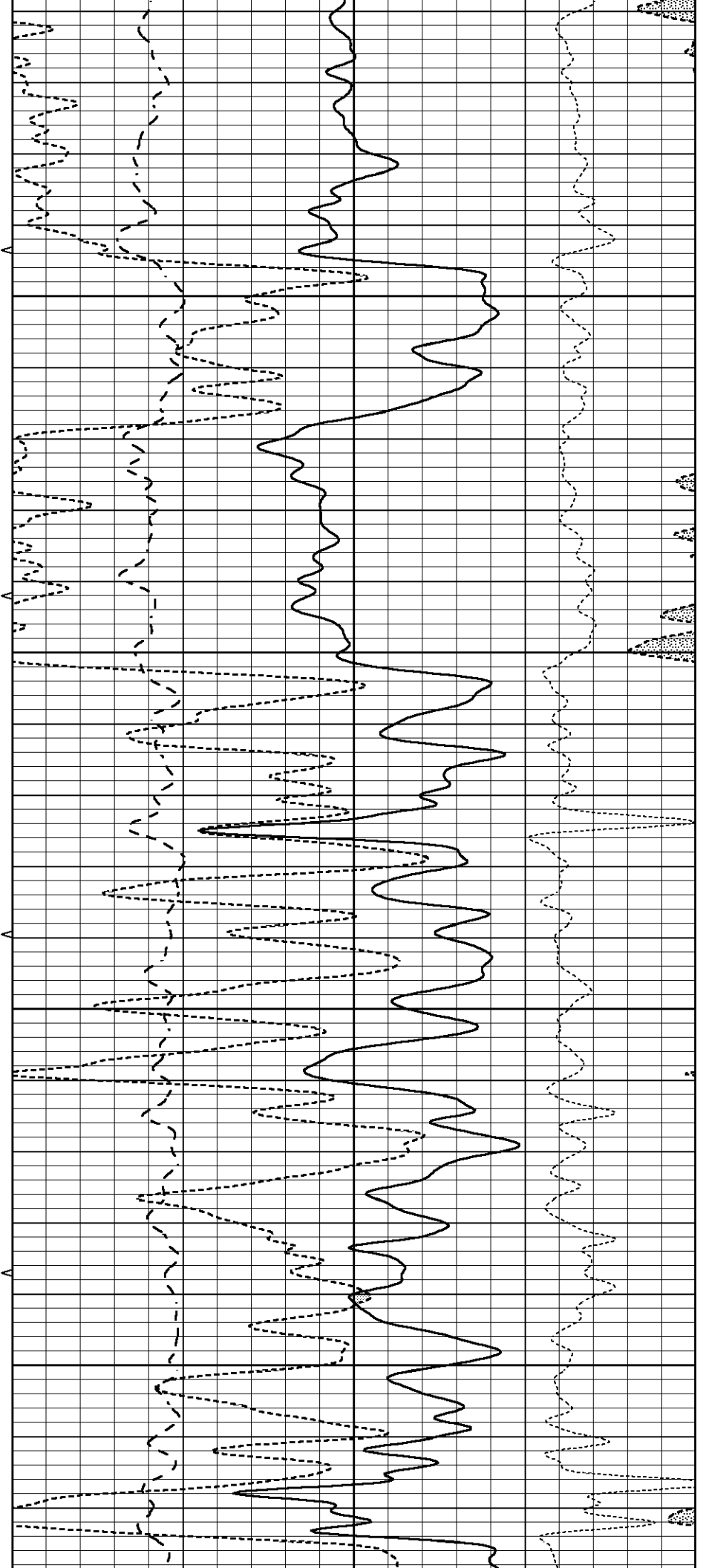


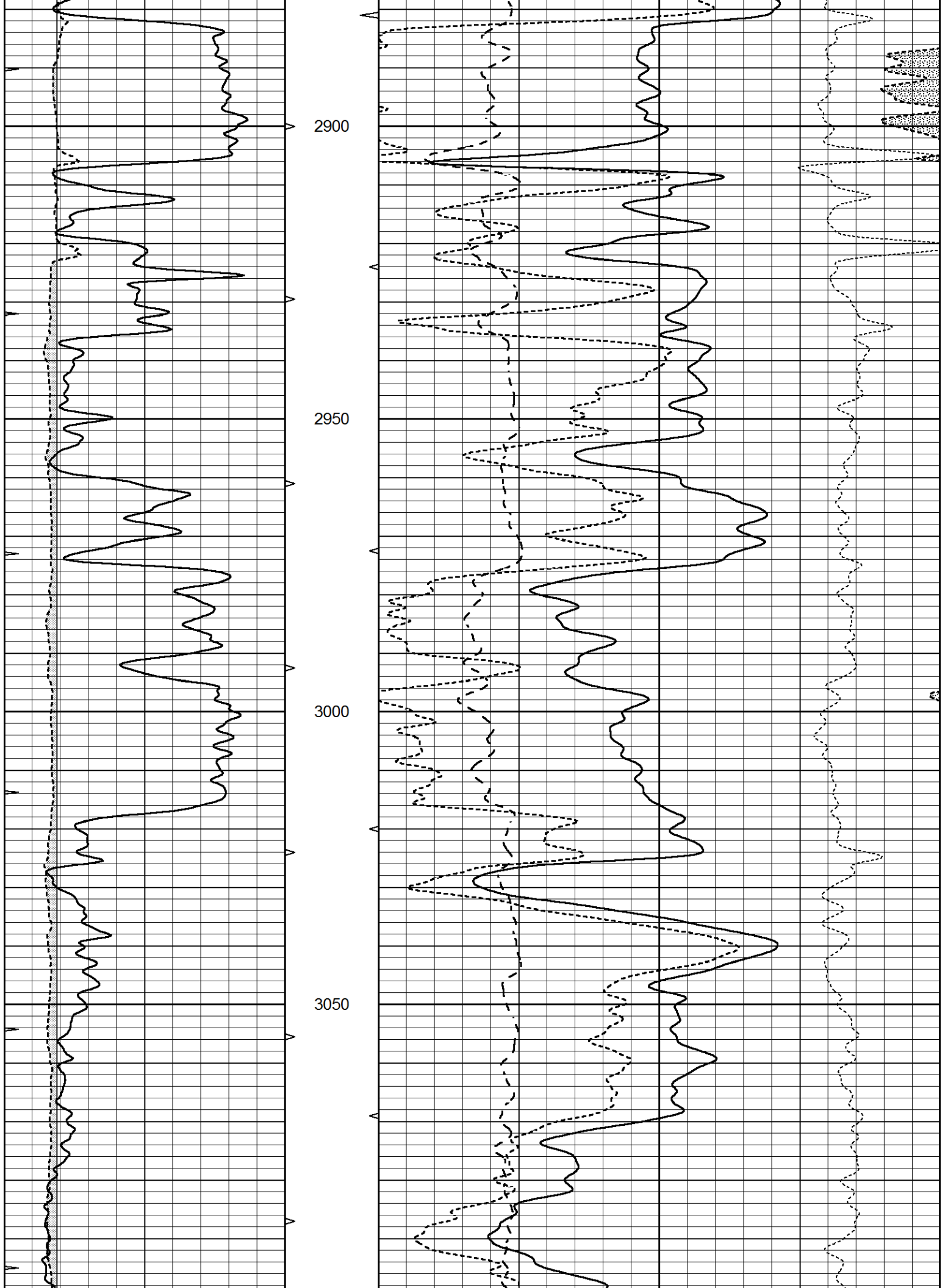
2700

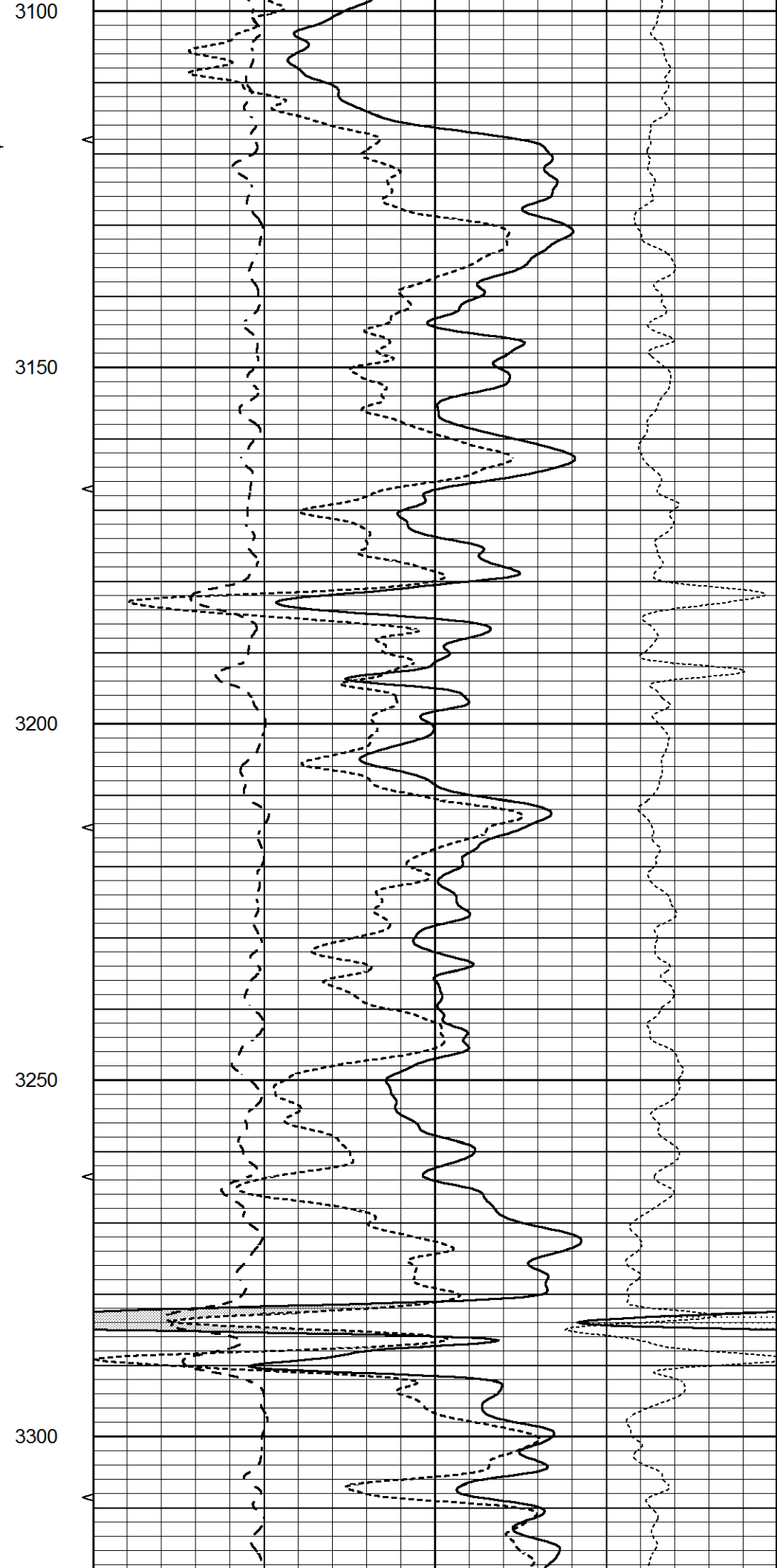
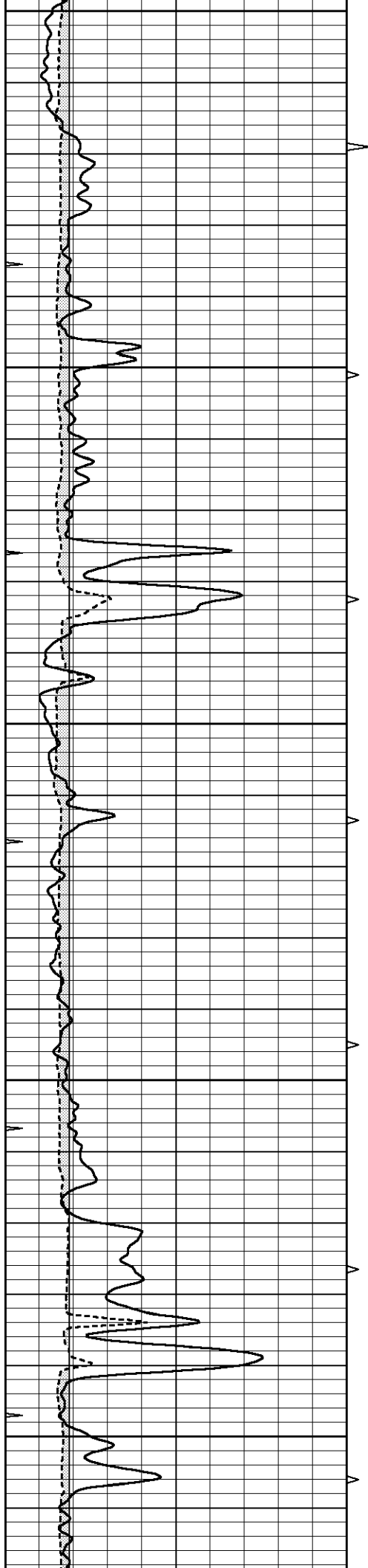
2750

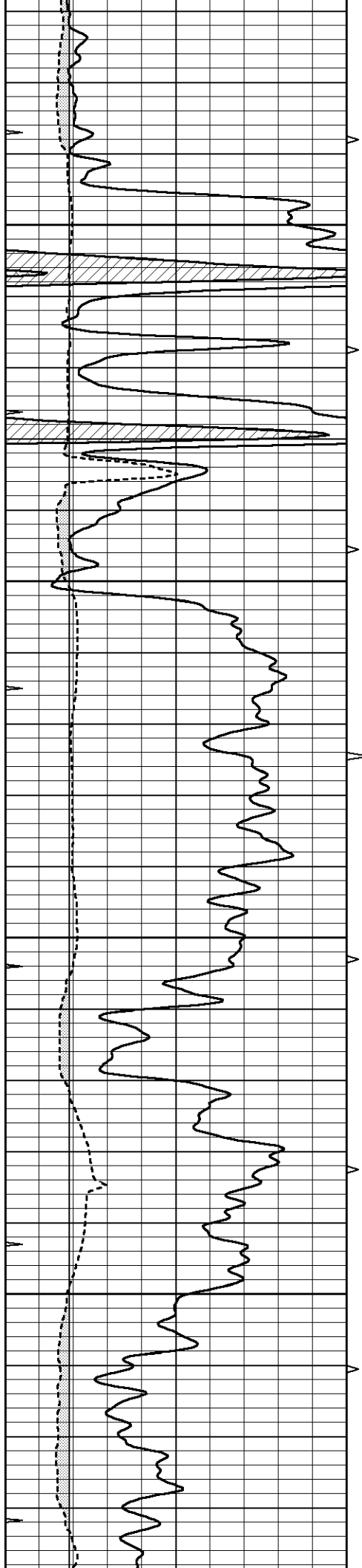
2800

2850







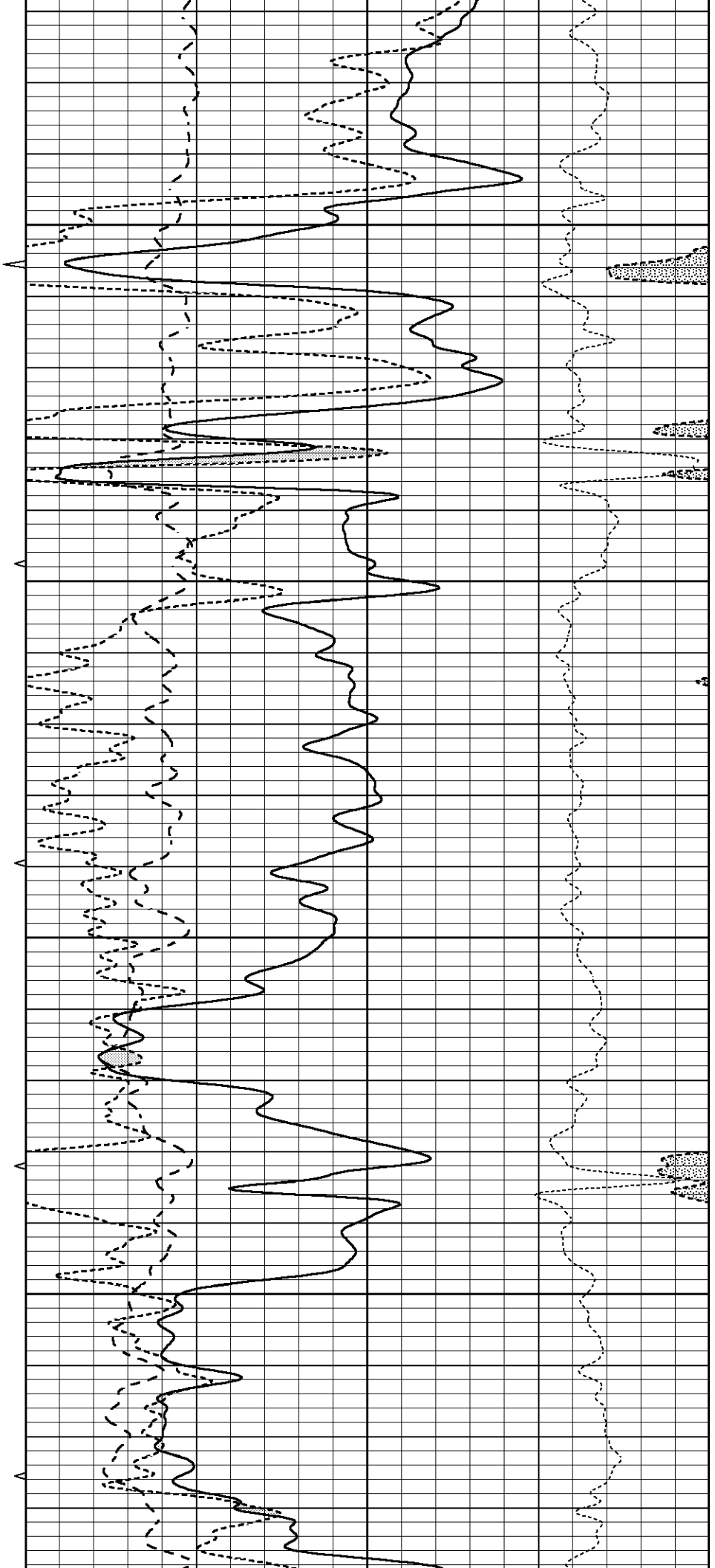


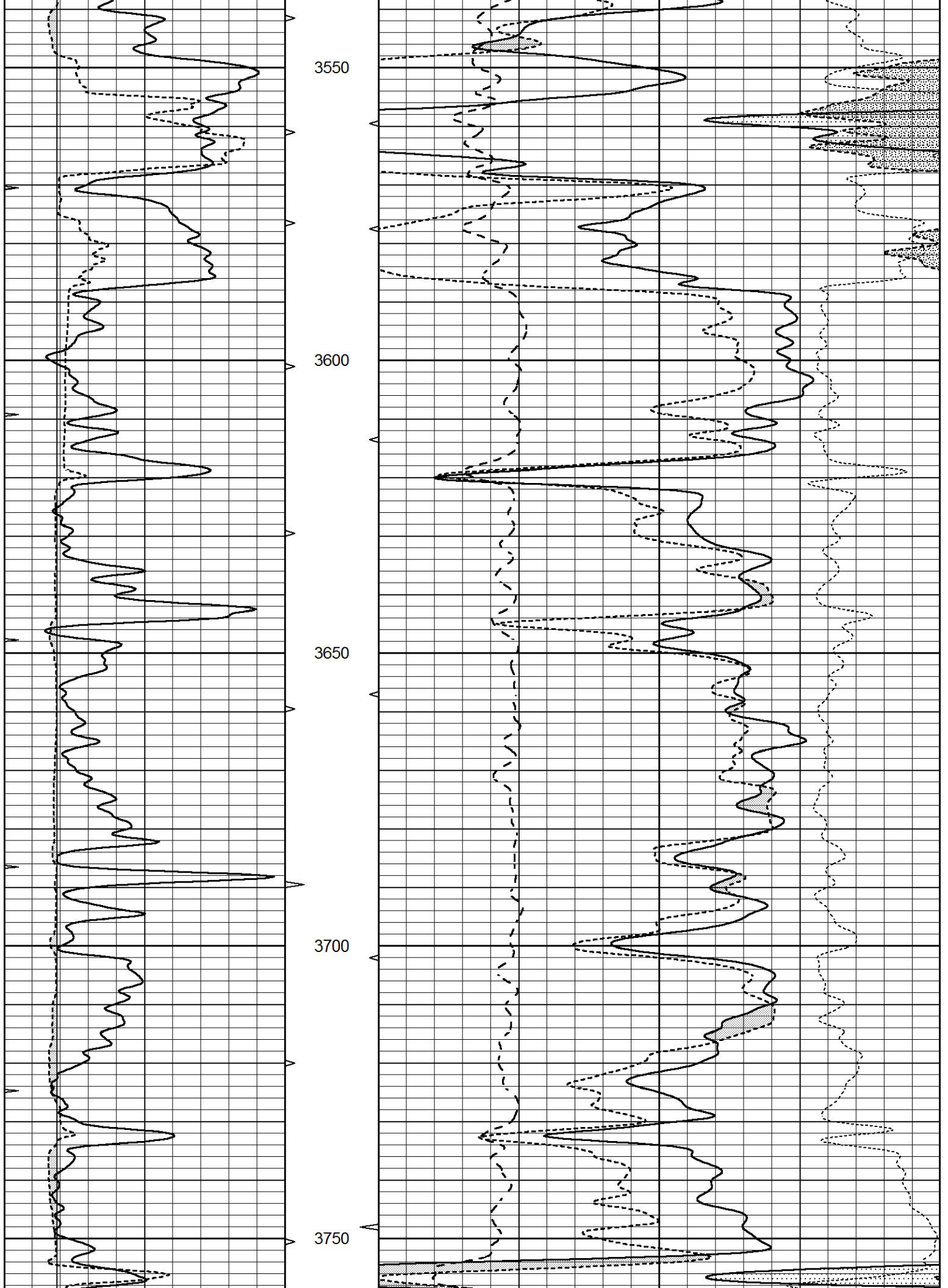
3350

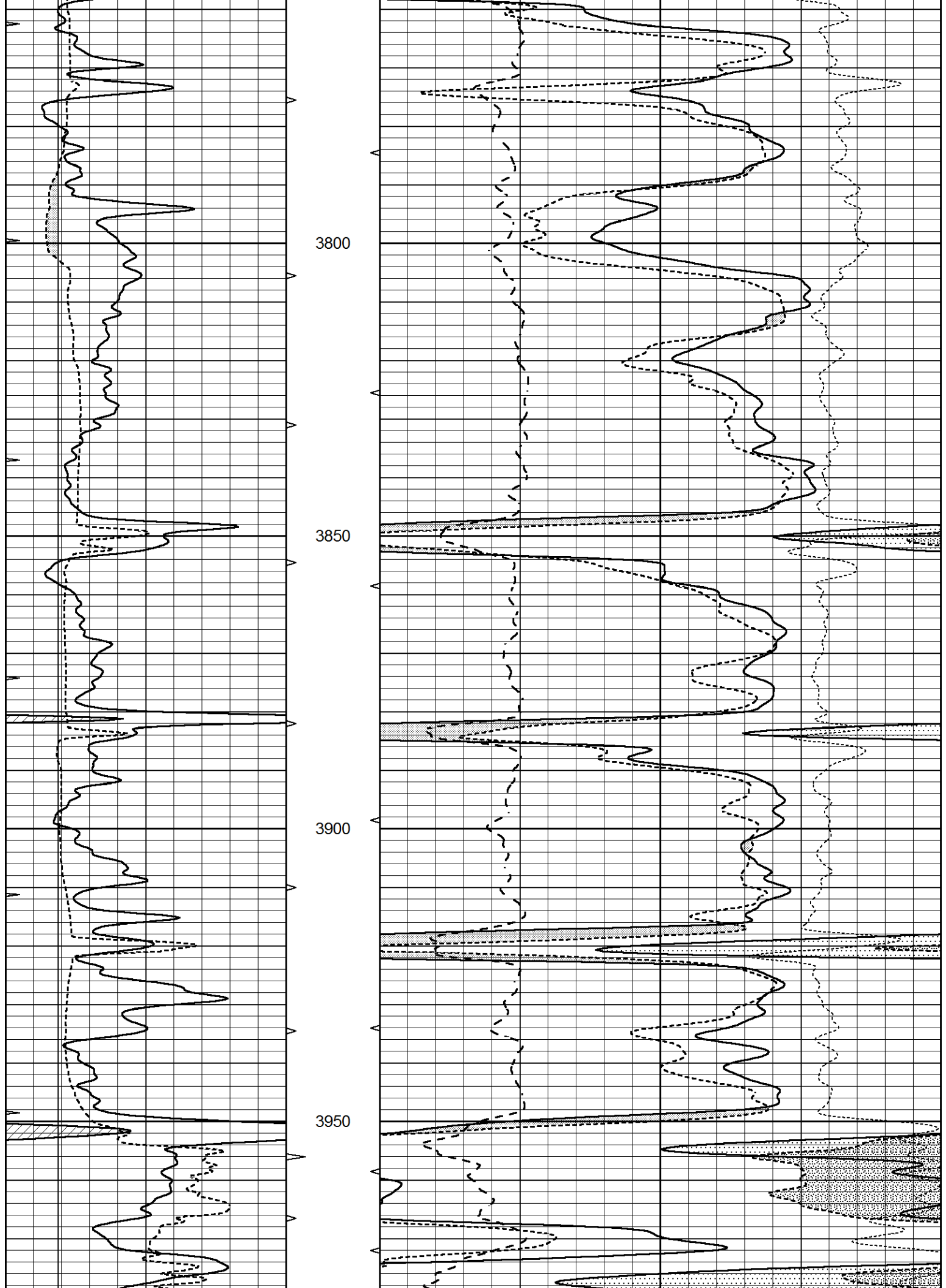
3400

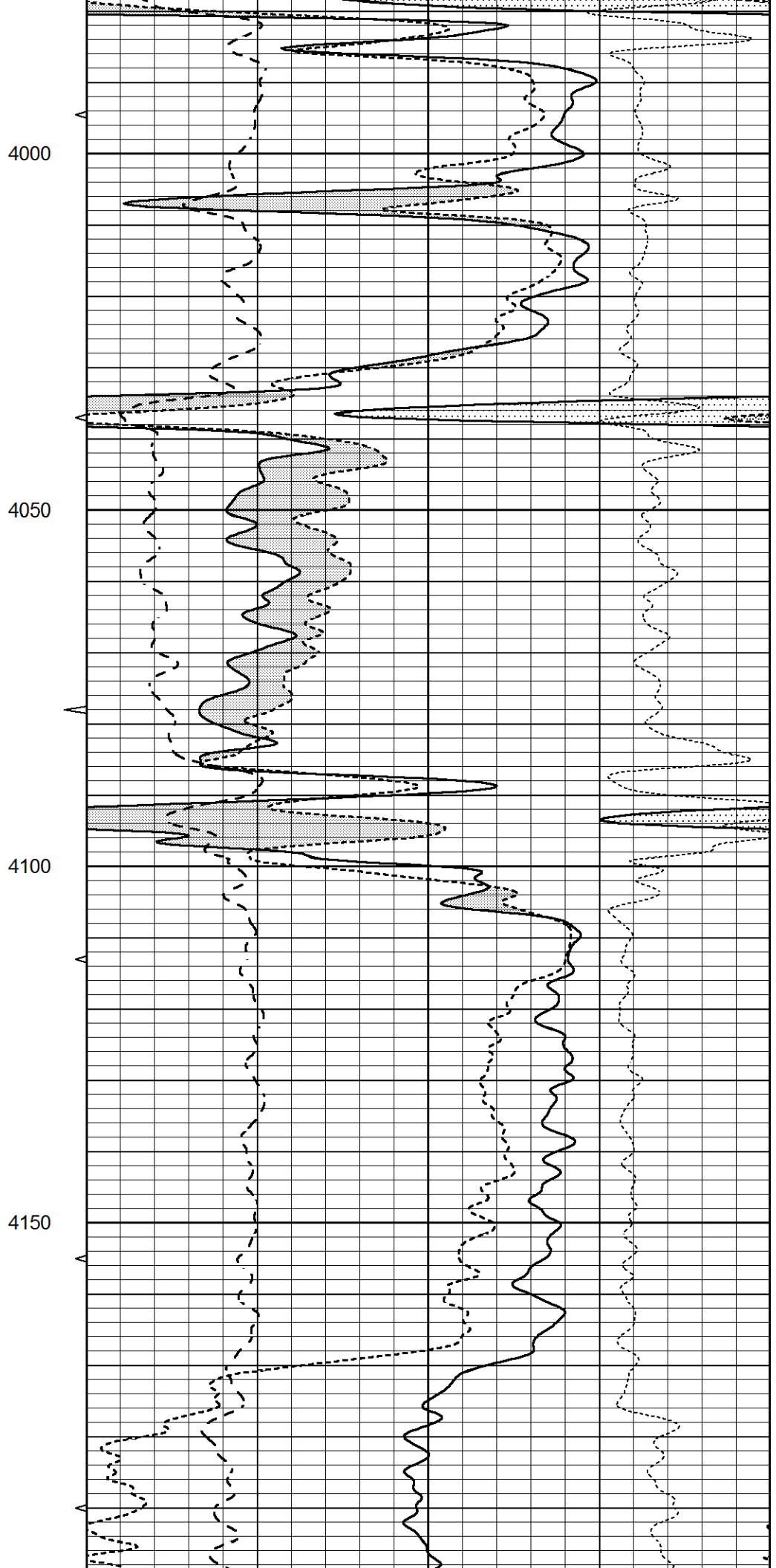
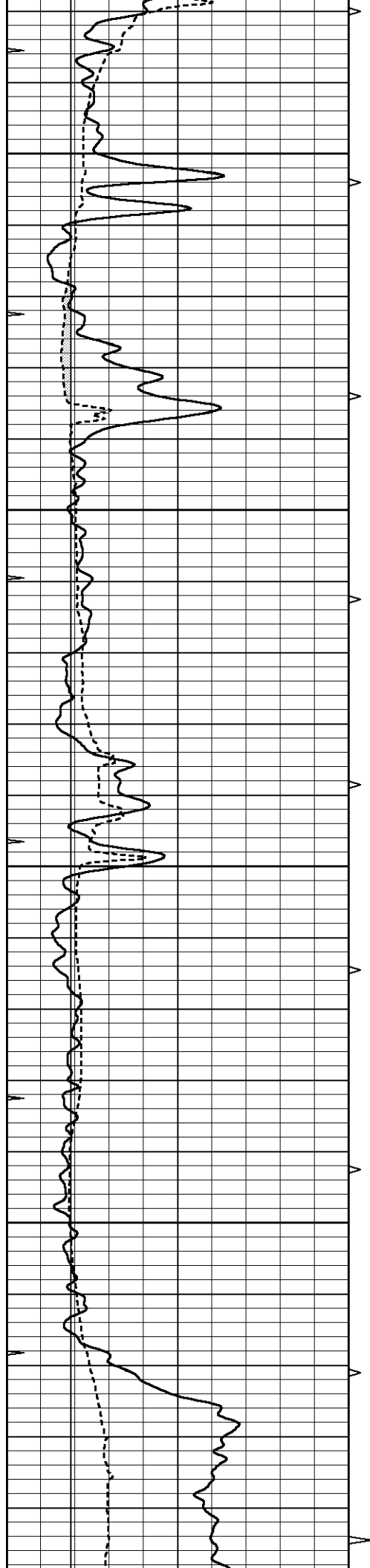
3450

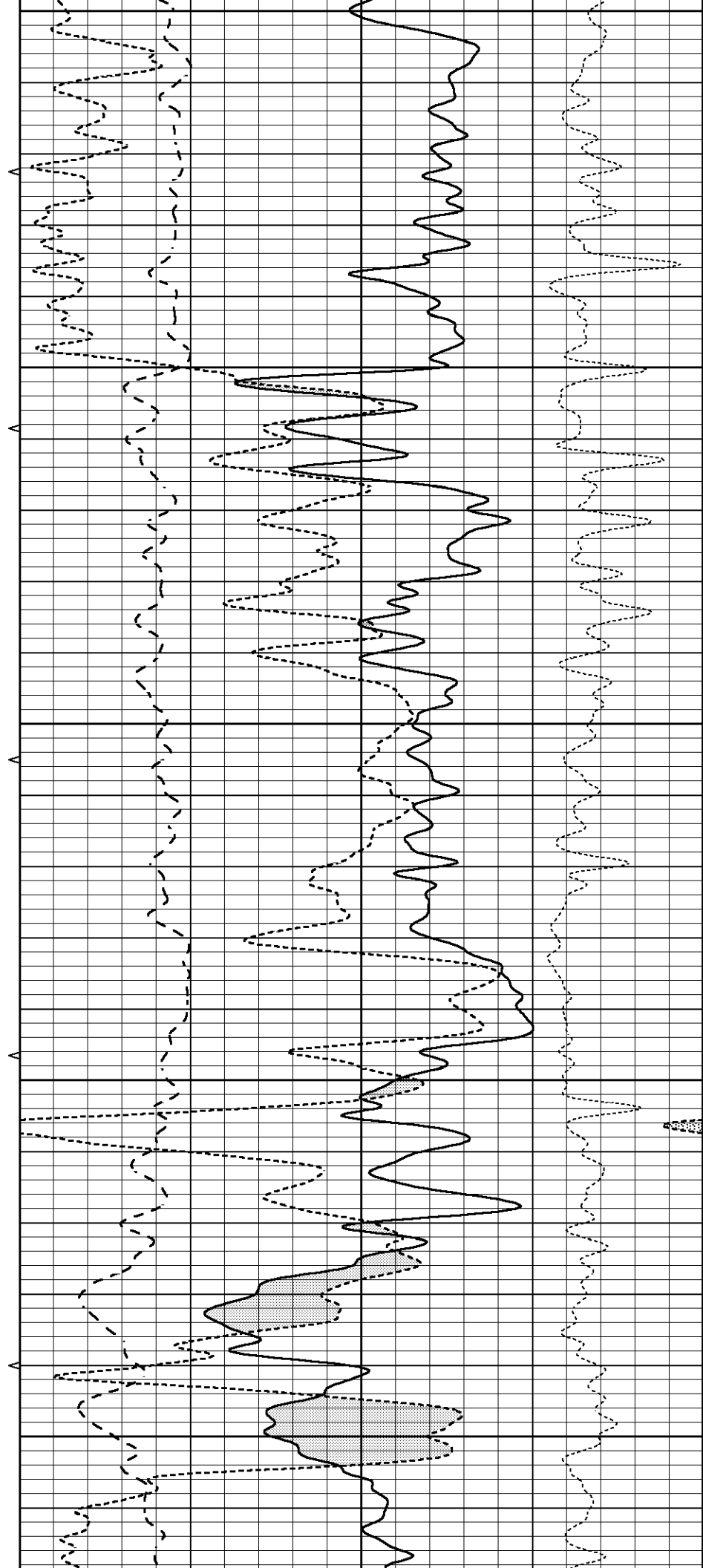
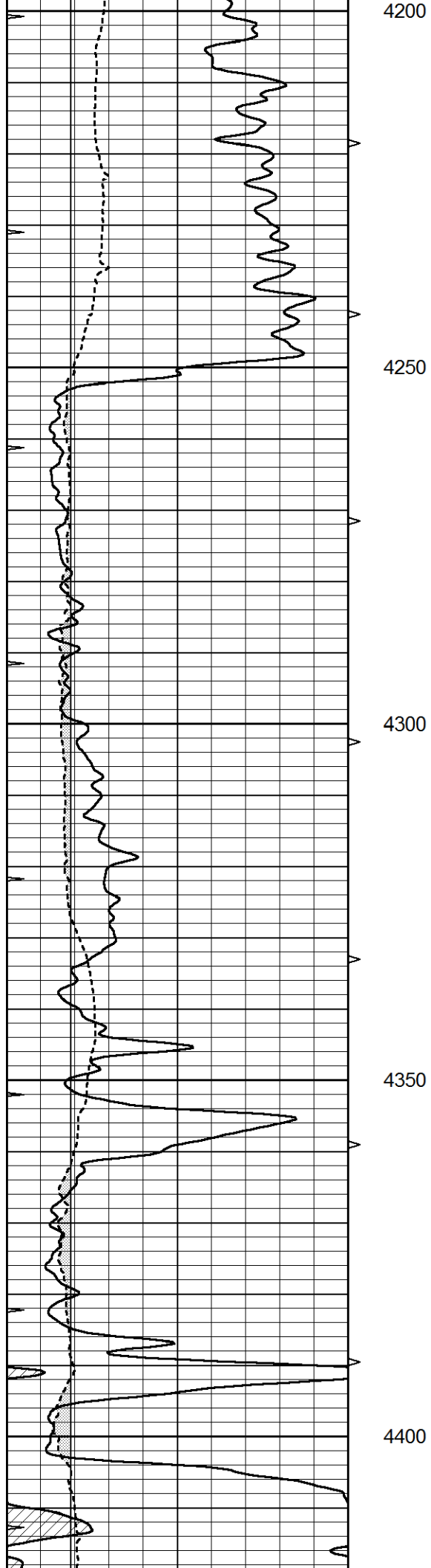
3500

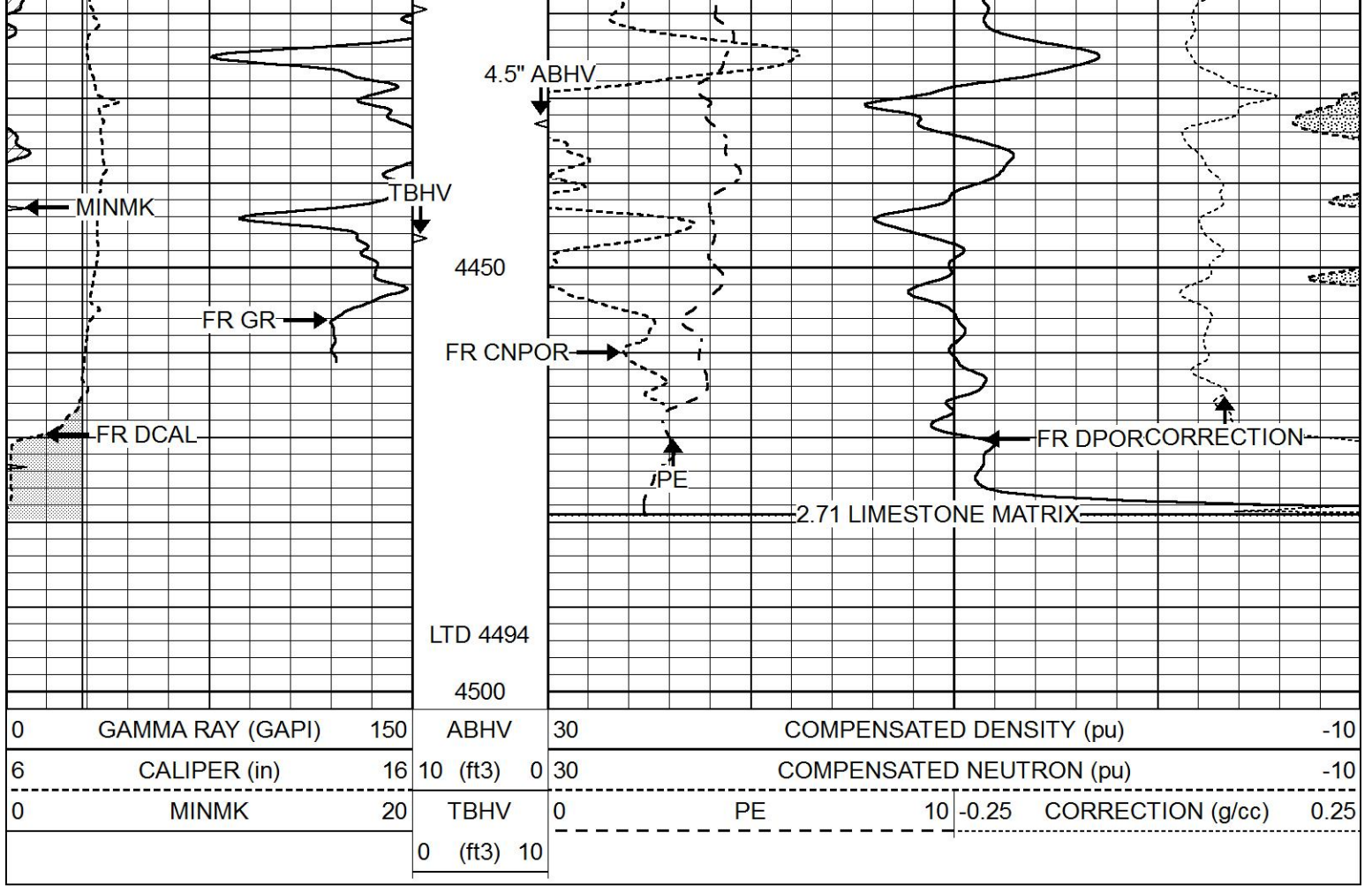








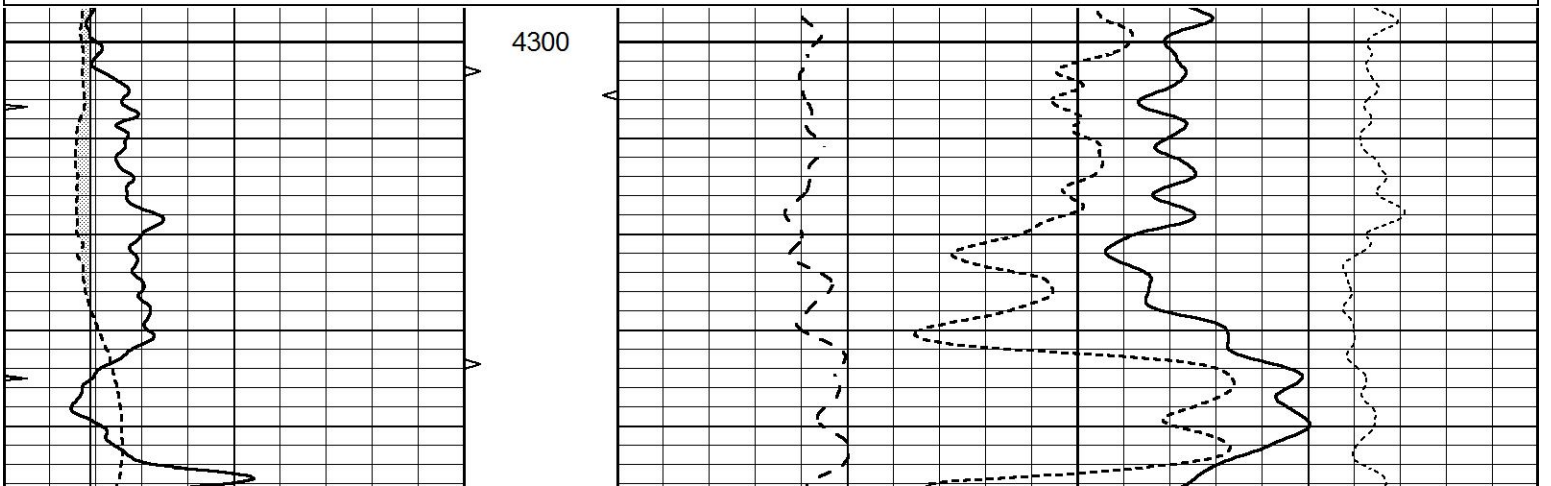


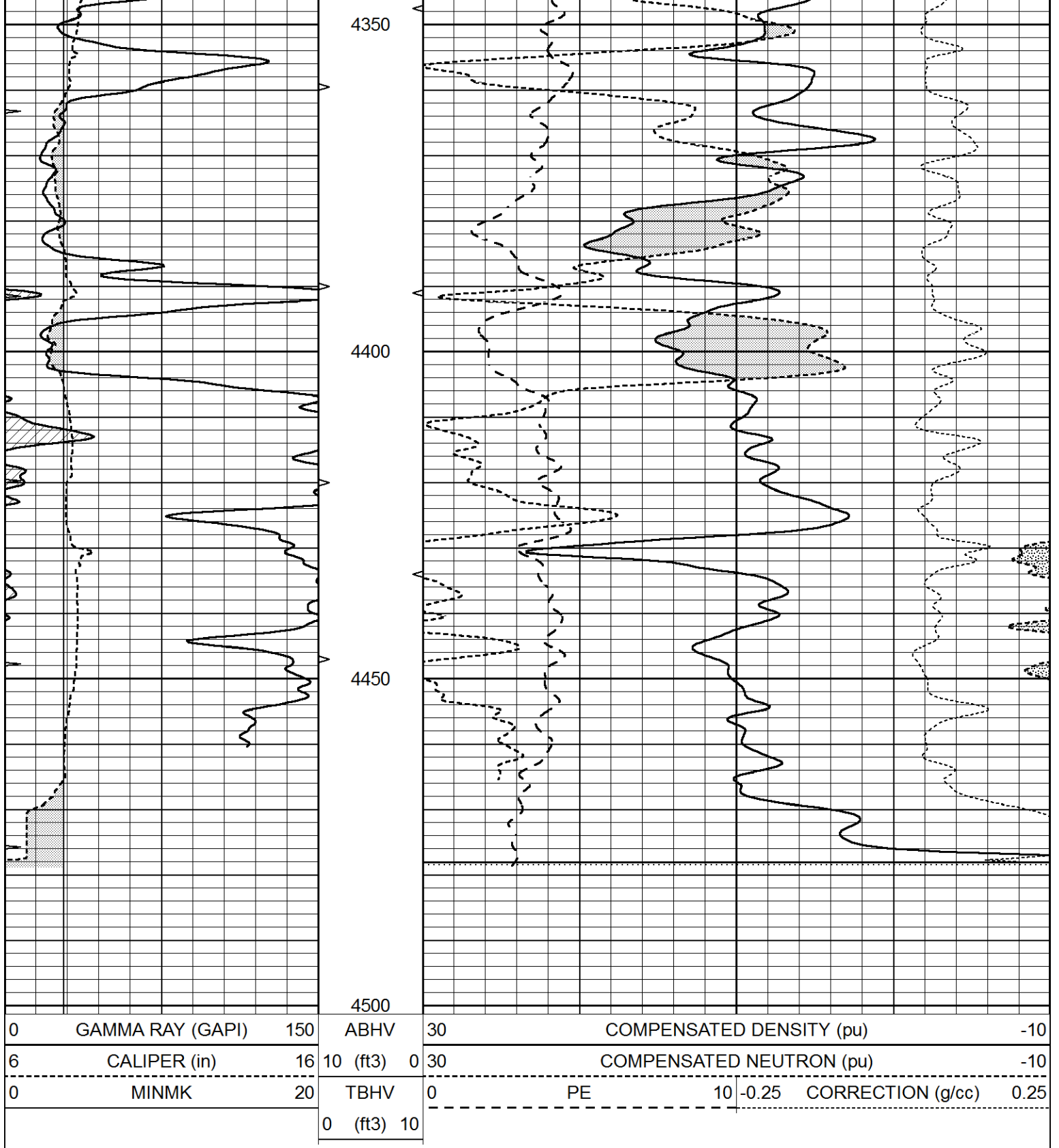


# REPEAT SECTION

Database File 5275pe.db  
 Dataset Pathname pass2.1R  
 Presentation Format ldt\_neu  
 Dataset Creation Thu Jun 10 22:25:10 2021  
 Charted by Depth in Feet scaled 1:240

0	GAMMA RAY (GAPI)	150	ABHV	30	COMPENSATED DENSITY (pu)	-10			
6	CALIPER (in)	16	10 (ft3)	0	30	COMPENSATED NEUTRON (pu)	-10		
0	MINMK	20	TBHV	0	PE	10	-0.25	CORRECTION (g/cc)	0.25
			0 (ft3)	10					





### Calibration Report

Database File 5275pe.db  
 Dataset Pathname pass3.1M  
 Dataset Creation Thu Jun 10 22:22:17 2021

### Dual Induction Calibration Report

Serial-Model:	PROBE9-DILG
Surface Cal Performed:	Thu Jun 10 20:35:18 2021
Downhole Cal Performed:	Wed Mar 11 11:31:19 2020
After Survey Verification Performed:	Wed Mar 11 11:31:22 2020

Surface Calibration								
Loop:	Readings			References			Results	
	Air	Loop		Air	Loop		m	b
Deep	-0.014	0.629	V	0.000	400.000	mmho/m	720.000	-12.000
Medium	0.039	0.728	V	0.000	464.000	mmho/m	720.000	-24.000
Internal:	Zero	Cal		Zero	Cal		m	b
Deep	0.011	0.610	V	0.000	400.000	mmho/m	667.135	-7.256
Medium	0.005	0.712	V	0.000	464.000	mmho/m	655.677	-3.102

Downhole Calibration								
	Readings			References			Results	
	Zero	Cal		Zero	Cal		m'	b'
Deep	0.000	0.000	mmho/m	14.508	388.384	mmho/m	1.000	0.000
Medium	0.000	0.000	mmho/m	166.367	504.400	mmho/m	1.000	0.000
LL3		7.500	V		1400.000	Ohm-m		
		0.000	V		20.000	Ohm-m		
		-7.200	V		4000.000	mmho-m		

After Survey Verification								
	Readings			Targets			Results	
	Zero	Cal		Zero	Cal		m'	b'
Deep	0.000	0.000	mmho/m	0.000	0.000	mmho/m	0.000	0.000
Medium	0.000	0.000	mmho/m	0.000	0.000	mmho/m	0.000	0.000
LL3		1.000	Ohm-m		1.000	Ohm-m		
		0.000	Ohm-m		0.000	Ohm-m		
		1.000	mmho-m		1.000	mmho-m		

Litho Density Calibration Report  
Serial: 003      Model: PRB

Master Calibration					Performed Fri Mar 05 10:51:07 2021			
	Background	Magnesium	Aluminum	Aluminum+Fe				
Window 1	1570.6	10682.1	3457.0	3096.9				cps
Window 2	1451.7	9432.7	3101.4	2816.5				cps
Window 3	1334.0	7160.6	2532.0	2369.3				cps
Window 4	370.4	373.1	366.4	370.9				cps
Long Space	0.0	7981.0	1649.7	1364.8				cps
Short Space	2.8	3522.0	2211.0	1823.6				cps
Rho		1.7100	2.5900	0.0000				g/cc
Pe		2.0000	2.7500	5.7900				
Rib Angle	: 43.5	Rib Slope	: 0.951	Density/Spine Ratio			: 0.535	
Spine Angle	: 73.5	Spine Slope	: 3.386	Spine Intercept			: -18.7	

Before Survey Verification					Performed Wed Dec 31 18:00:00 1969			
	Background	Magnesium	Aluminum	Aluminum+Fe				
Window 1	0.0	0.0	0.0	0.0				cps
Window 2	0.0	0.0	0.0	0.0				cps
Window 3	0.0	0.0	0.0	0.0				cps
Window 4	0.0	0.0	0.0	0.0				cps
Long Space	0.0	0.0	0.0	0.0				cps
Short Space	0.0	0.0	0.0	0.0				cps
Measured Rho		0.0000	0.0000	0.0000				g/cc
Measured Correction		0.0000	0.0000	0.0000				g/cc
Measured Pe			0.0000	0.0000				

After Survey Verification

Performed Wed Dec 31 18:00:00 1969

Window 1	0.0	0.0	0.0	0.0	cps
Window 2	0.0	0.0	0.0	0.0	cps
Window 3	0.0	0.0	0.0	0.0	cps
Window 4	0.0	0.0	0.0	0.0	cps
Long Space	0.0	0.0	0.0	0.0	cps
Short Space	0.0	0.0	0.0	0.0	cps
Measured Rho		0.0000	0.0000	0.0000	g/cc
Measured Correction		0.0000	0.0000	0.0000	g/cc
Measured Pe			0.0000	0.0000	

Compensated Neutron Calibration Report

Serial Number: 070808PMC  
Tool Model: NABORS

PRE-SURVEY VERIFICATION

Detector	Readings	Measured	Target
Short Space	cps		
Long Space	cps	pu	pu

POST-SURVEY VERIFICATION

Detector	Readings	Measured	Target
Short Space	cps		
Long Space	cps	pu	pu

Gamma Ray Calibration Report

Serial Number: 070558  
Tool Model: OPEN\_GR  
Performed: Fri Apr 16 13:57:16 2021

Calibrator Value: 1.0 GAPI

Background Reading: 0.0 cps  
Calibrator Reading: 1.0 cps

Sensitivity: 0.3000 GAPI/cps