



DUAL INDUCTION LOG

Company SIROKY OIL MANAGEMENT
 Well FINCHAM #1-25
 Field BARNES
 County PRATT State KANSAS

Location: API #: 15-151-22529-0000
 335' FSL & 335' FEL
 NW - SE - SE - SE
 Permanent Datum GROUND LEVEL Elevation 1728
 Log Measured From KELLY BUSHING 12' A.G.L.
 Drilling Measured From KELLY BUSHING
 SEC 25 TWP 27S RGE 12W
 Other Services CDL/CNL/PE DIL/MEL
 Elevation K.B. 1740 D.F. 1738 G.L. 1728

Date	6/10/21
Run Number	ONE
Depth Driller	4496
Depth Logger	4494
Bottom Logged Interval	4492
Top Log Interval	00
Casing Driller	10 3/4"@341'
Casing Logger	341
Bit Size	7 7/8"
Type Fluid in Hole	CHEMICAL MUD
Density / Viscosity	9.3/55
pH / Fluid Loss	10.5/12.4
Source of Sample	FLOWLINE
Rm @ Meas. Temp	.420@103F
Rmf @ Meas. Temp	.315@103F
Rmc @ Meas. Temp	.504@103F
Source of Rmf / Rmc	MEASUREMENT
Rm @ BHT	.358@121F
Time Circulation Stopped	2.5 HOURS
Time Logger on Bottom	8.45 P.M.
Maximum Recorded Temperature	121F
Equipment Number	922339
Location	HAYS, KANSAS
Recorded By	JEFF LUEBBERS
Witnessed By	RYAN DAVIS
	BRIAN SIROKY
	SPENCER SIROKY

<<< Fold Here >>>

All interpretations are opinions based on inferences from electrical or other measurements and we cannot and do not guarantee the accuracy or correctness of any interpretation, and we shall not, except in the case of gross or willful negligence on our part, be liable or responsible for any loss, costs, damages, or expenses incurred or sustained by anyone resulting from any interpretation made by any of our officers, agents or employees. These interpretations are also subject to our general terms and conditions set out in our current Price Schedule.

15-151-22529-0000 Comments

THANK YOU FOR USING ELI WIRELINE HAYS, KANSAS (785) 628-6395
 DIRECTIONS
 PRATT, KS. (HWY 400 & 281) 9E. TO "100TH AVE., N. ACROSS 400 THEN 1W. ON DIRT TO "90TH AVE.", 1N., W. INTO

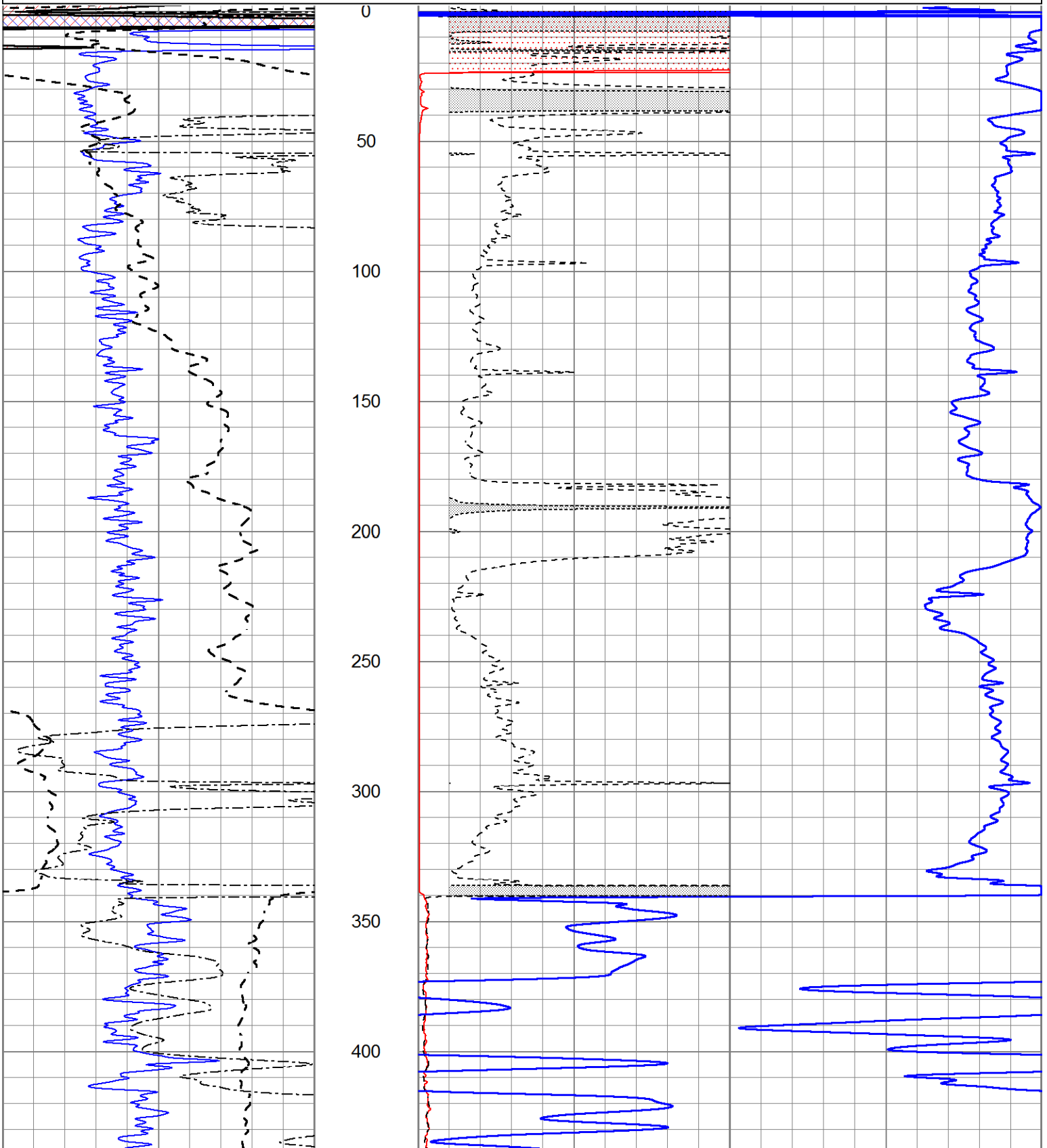


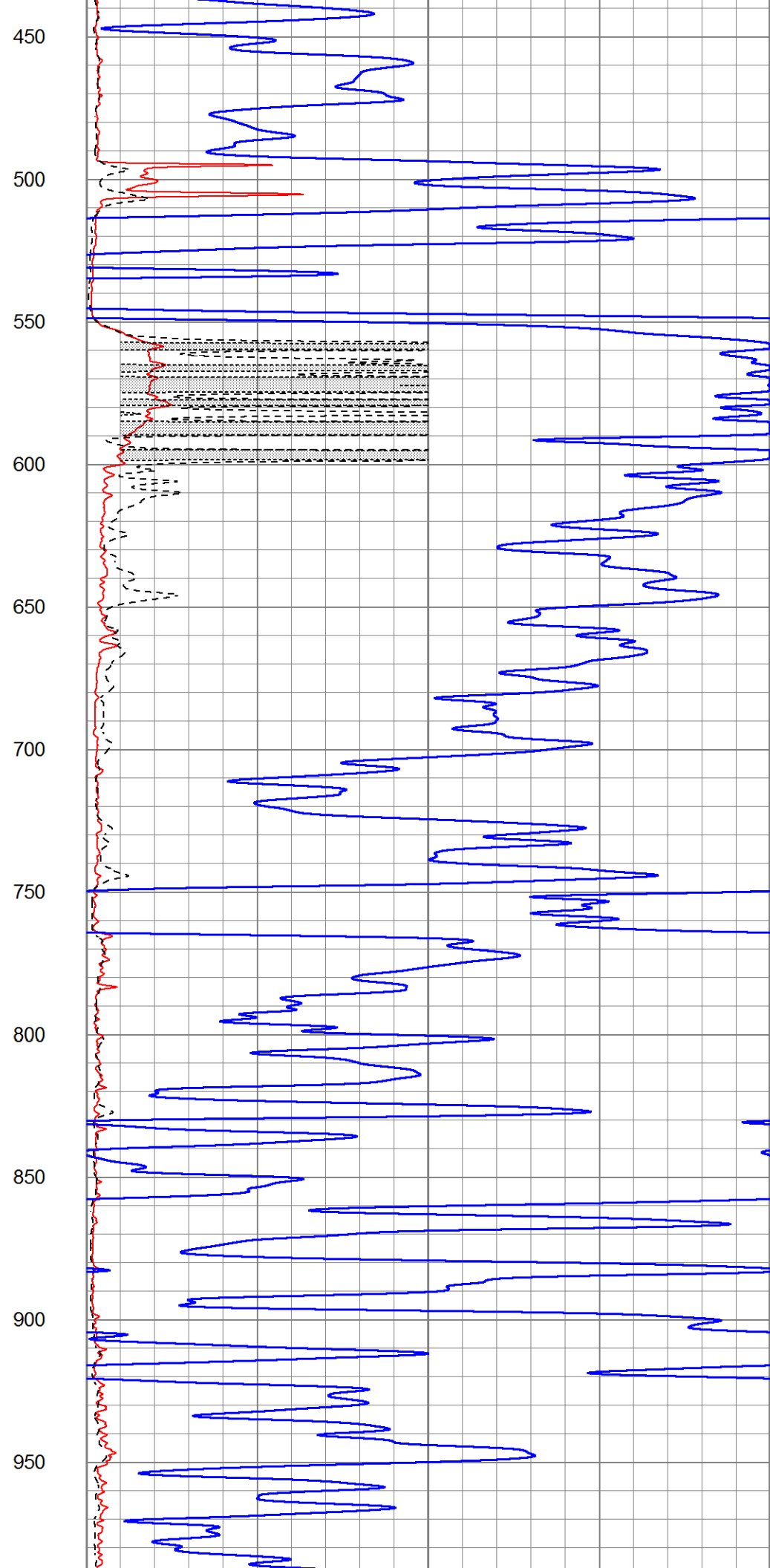
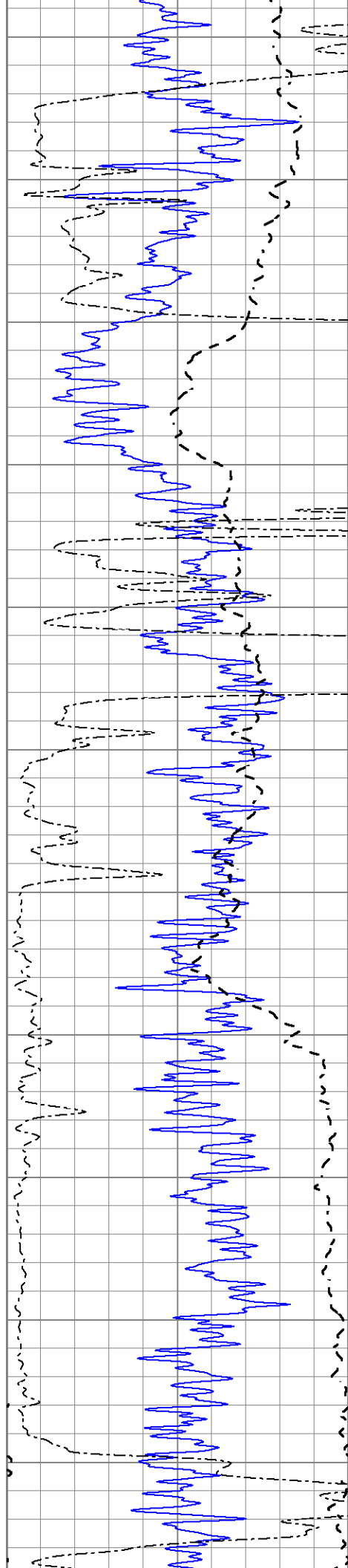
MAIN SECTION

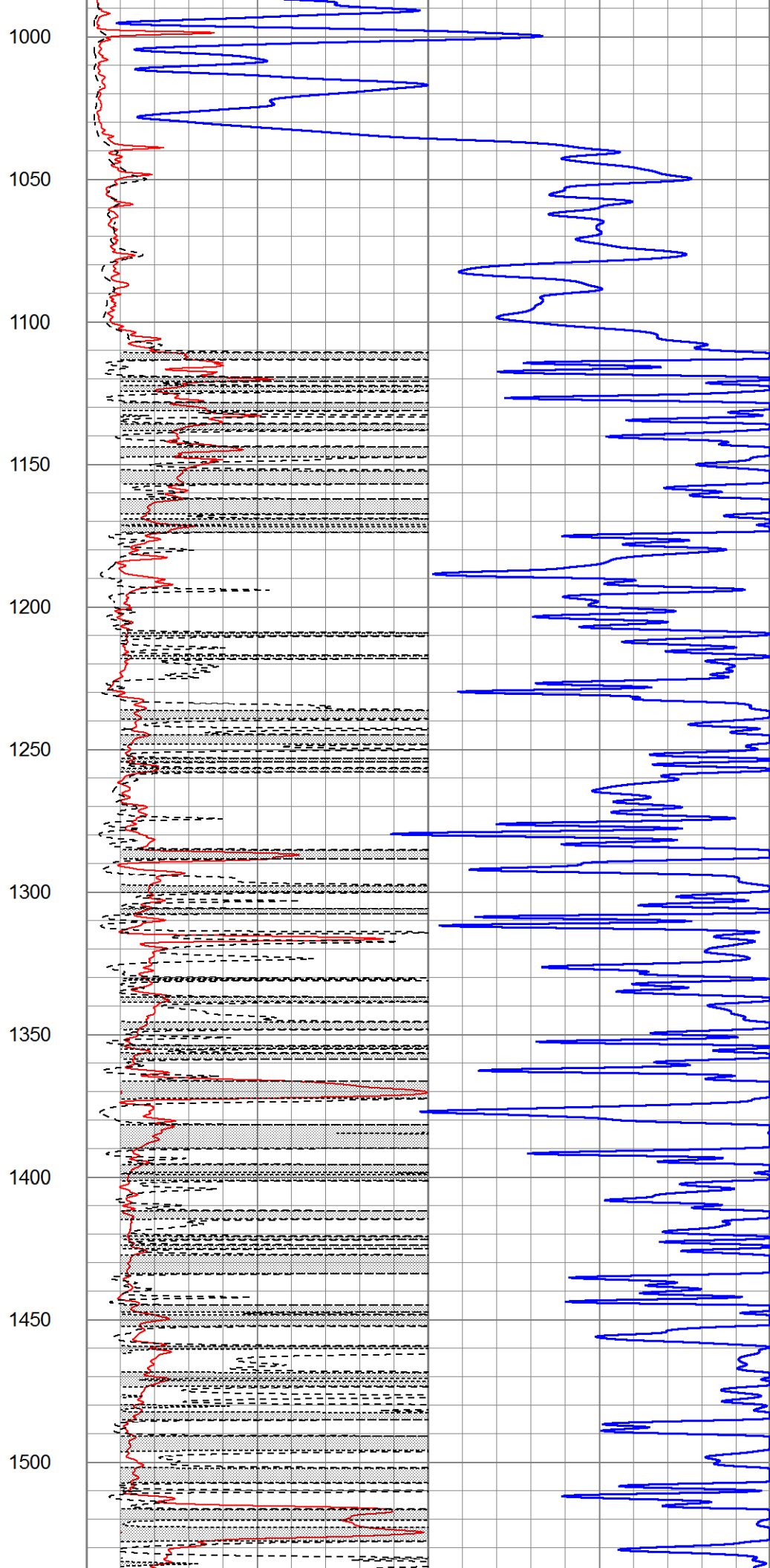
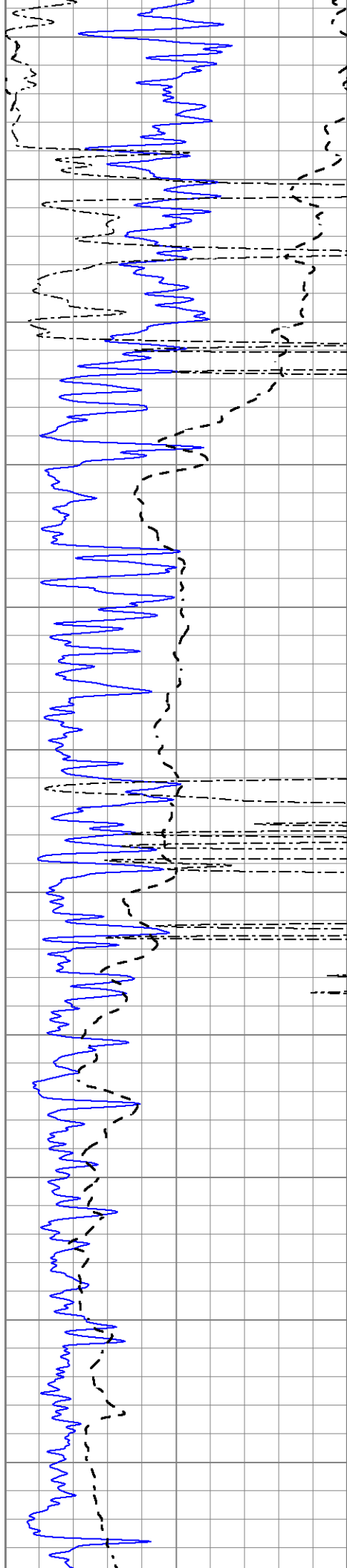
Database File 5275pe.db
 Dataset Pathname pass3.1M
 Presentation Format dil2
 Dataset Creation Thu Jun 10 22:22:17 2021
 Charted by Depth in Feet scaled 1:600

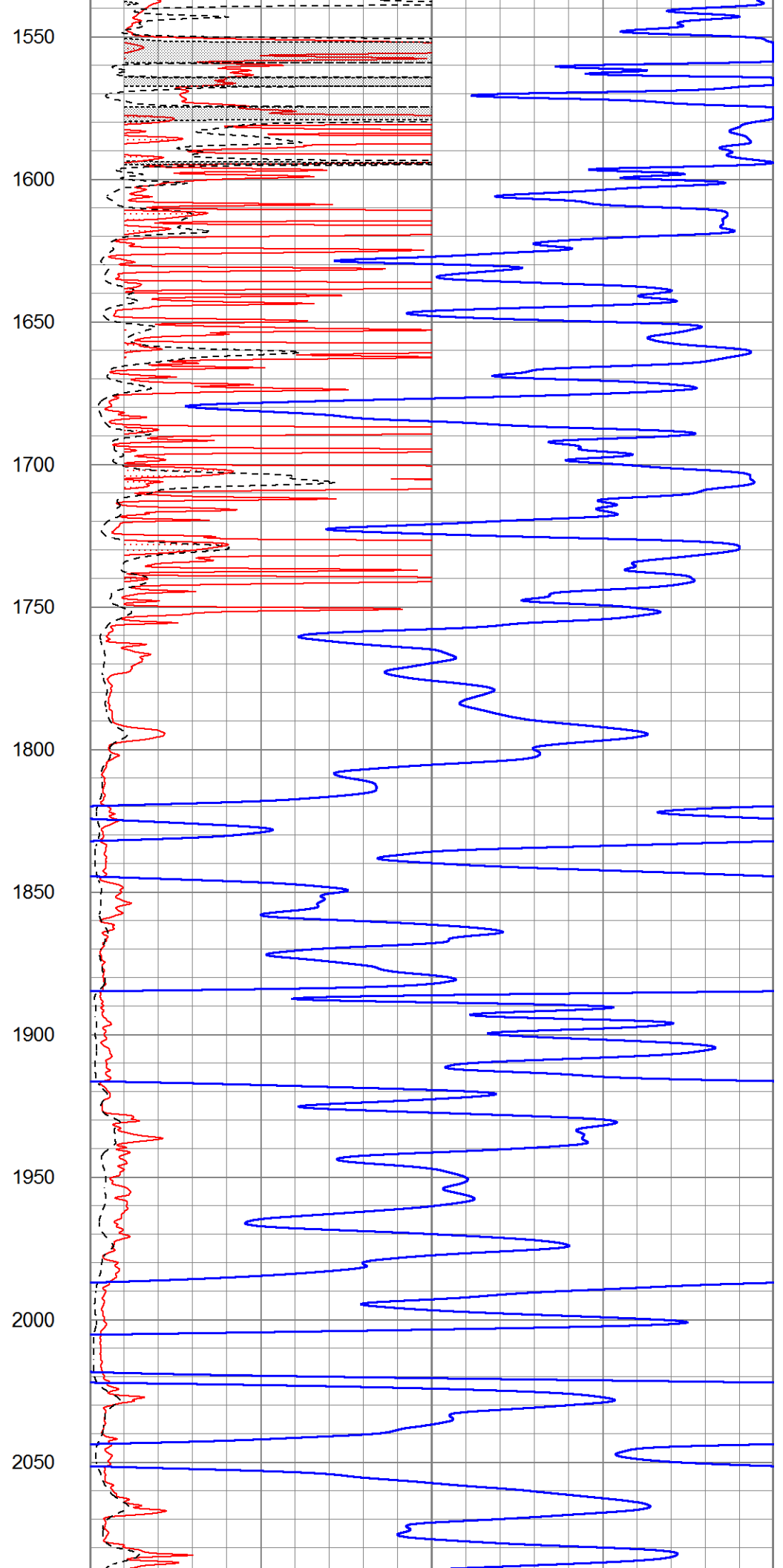
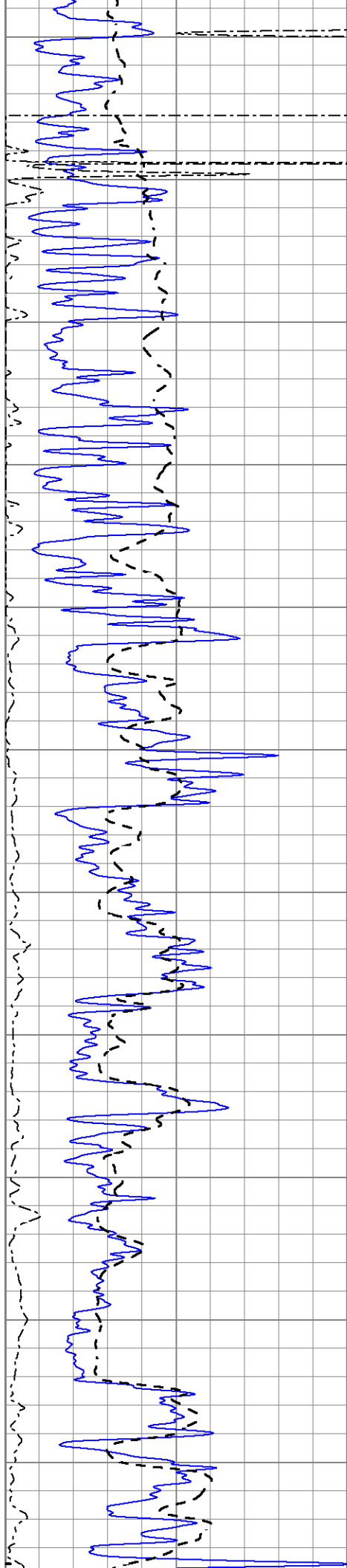
0	Gamma Ray (GAPI)	150
-100	SP (mV)	100
0	RWA (Ohm-m)	1

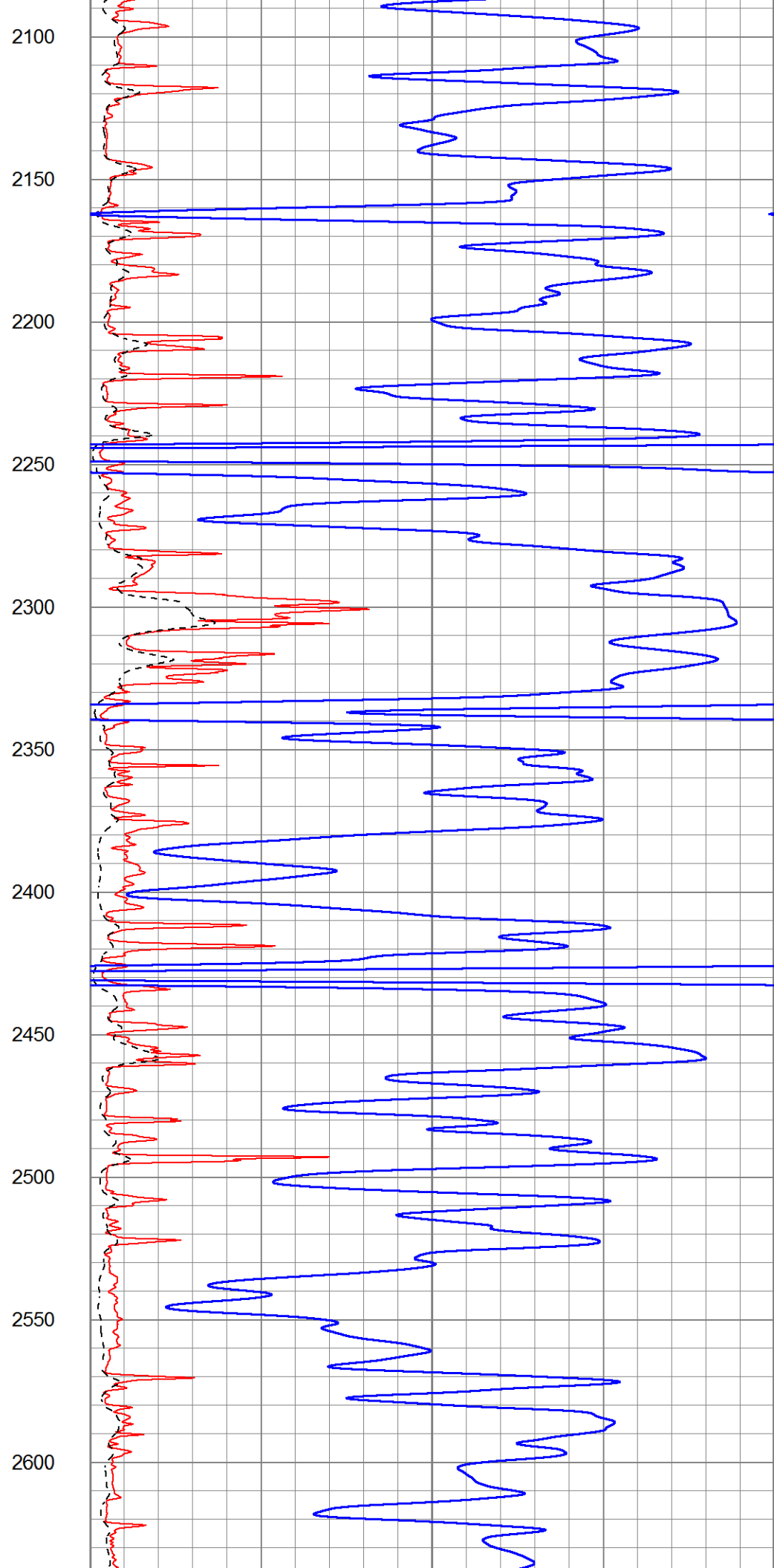
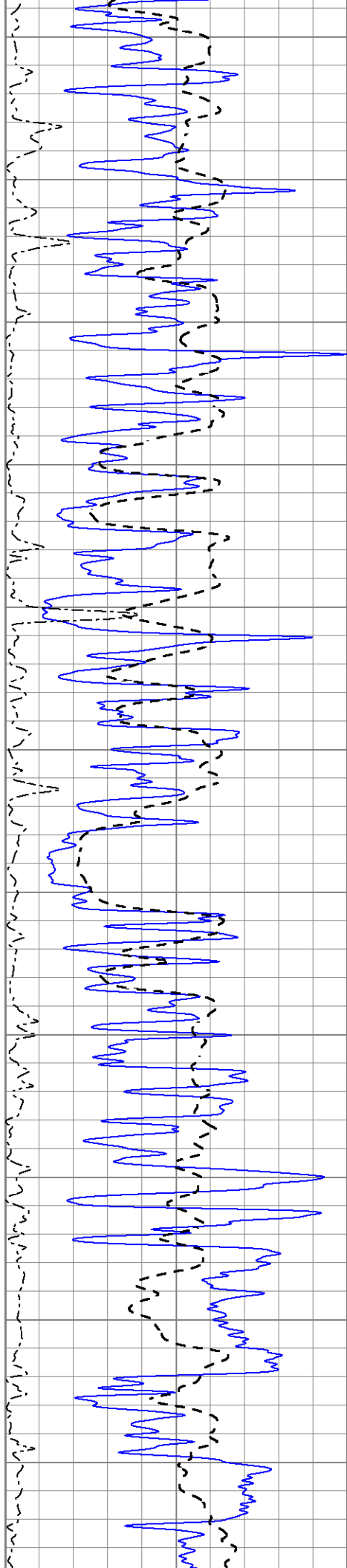
1000	CILD (mmho/m)	0
0	RLL3 (Ohm-m)	50
0	RILD (Ohm-m)	50
50	RILD X10 (Ohm-m)	500
50	RLL3 X10 (Ohm-m)	500

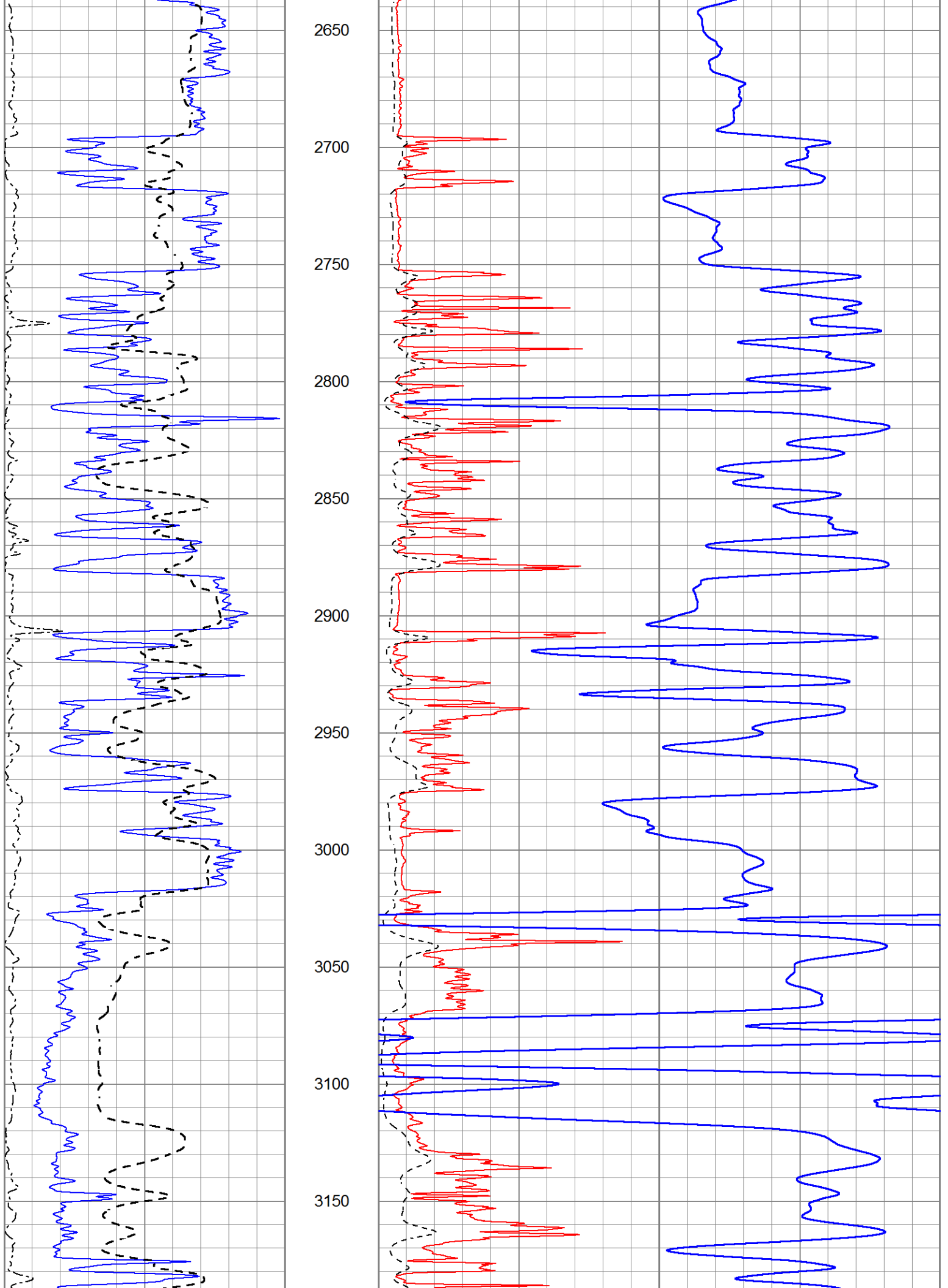


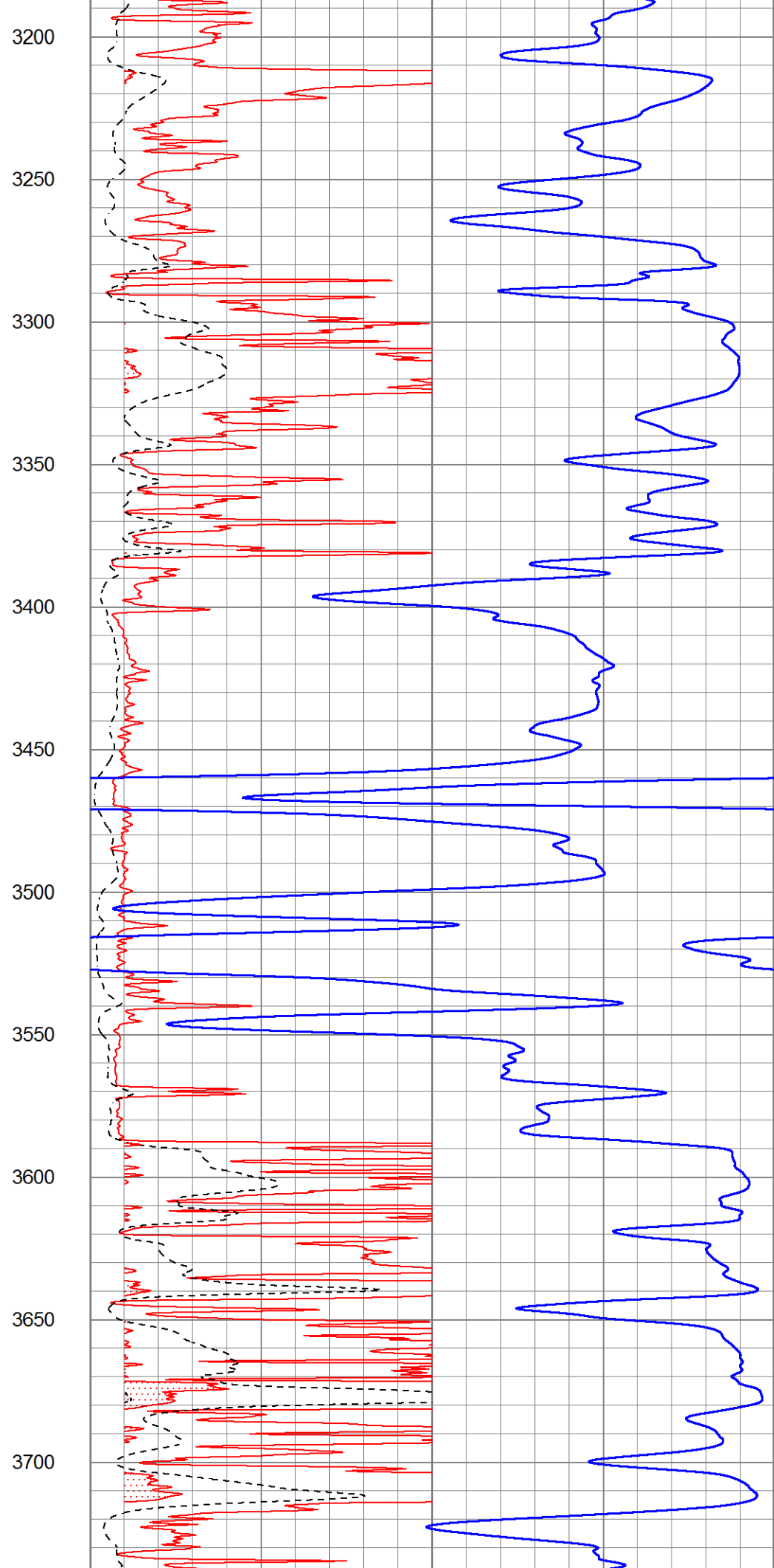
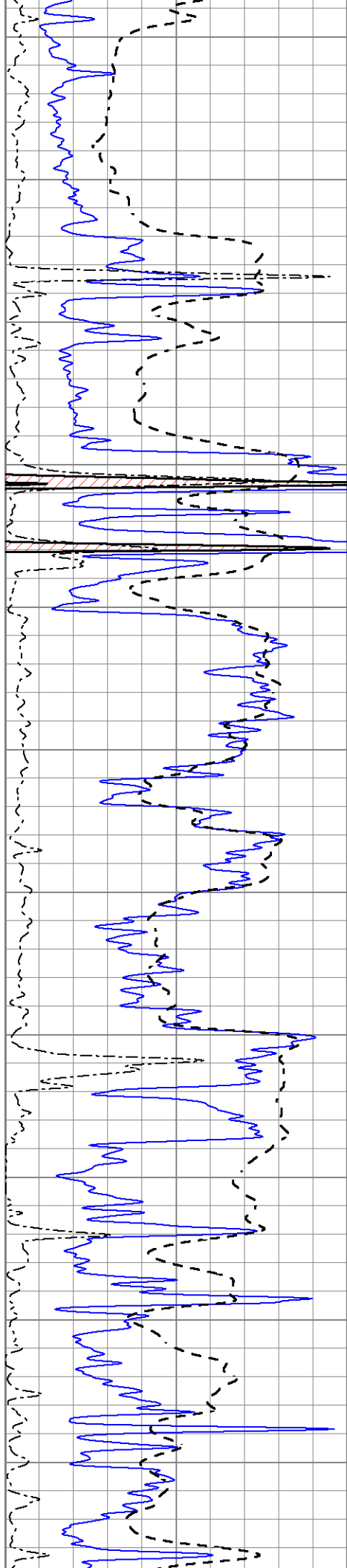


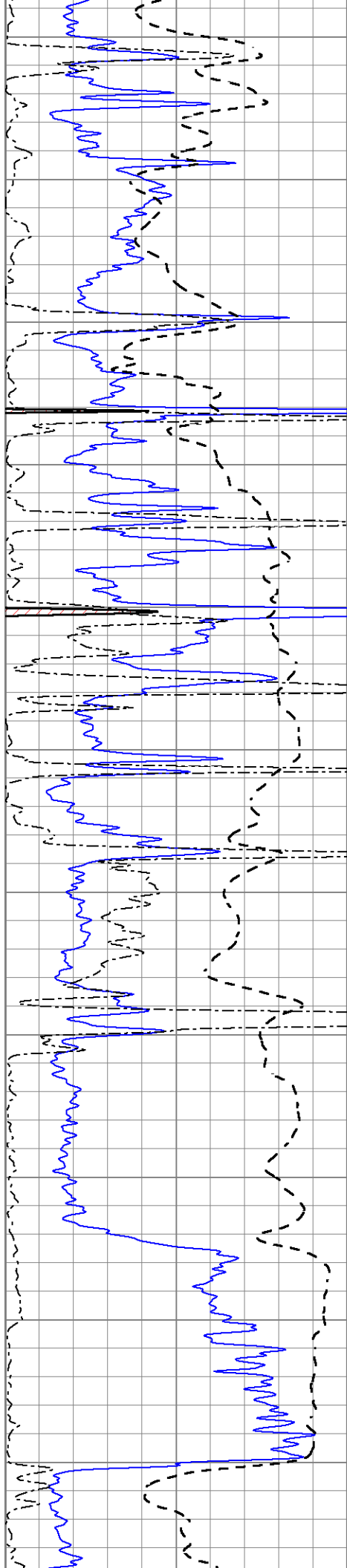












3750

3800

3850

3900

3950

4000

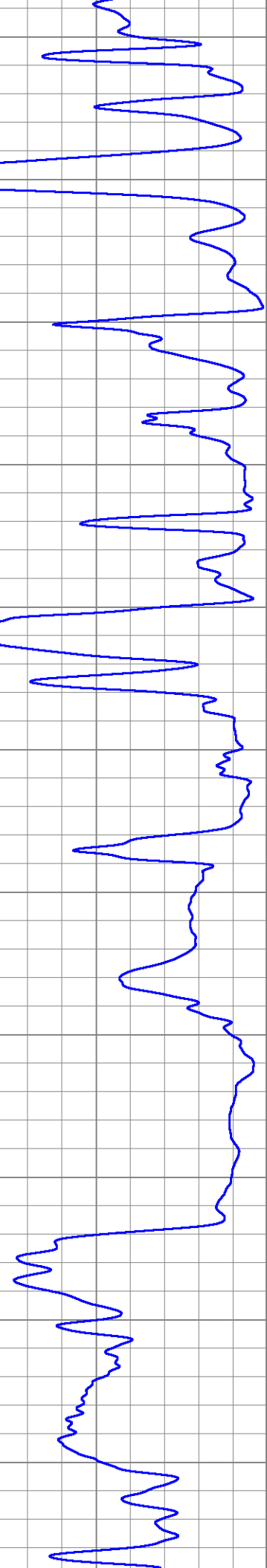
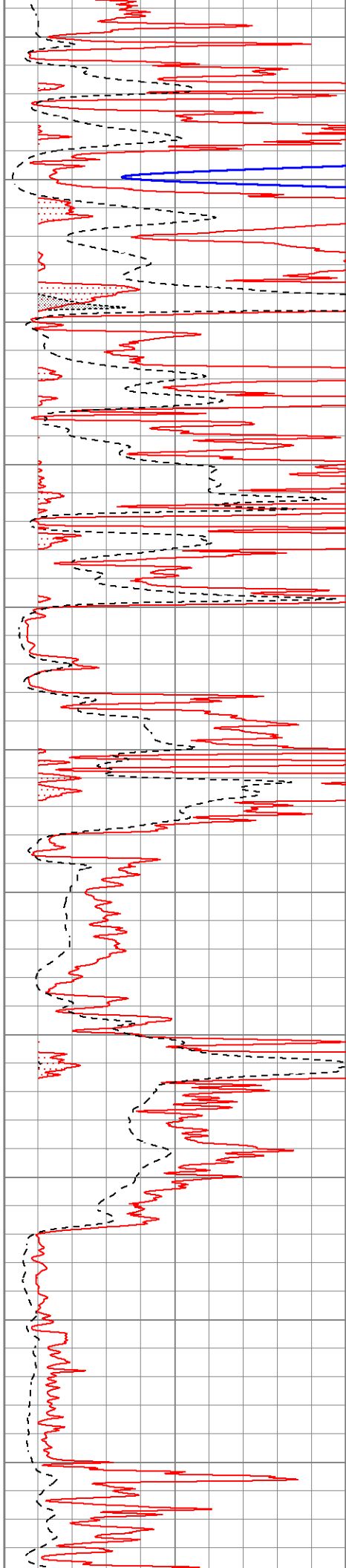
4050

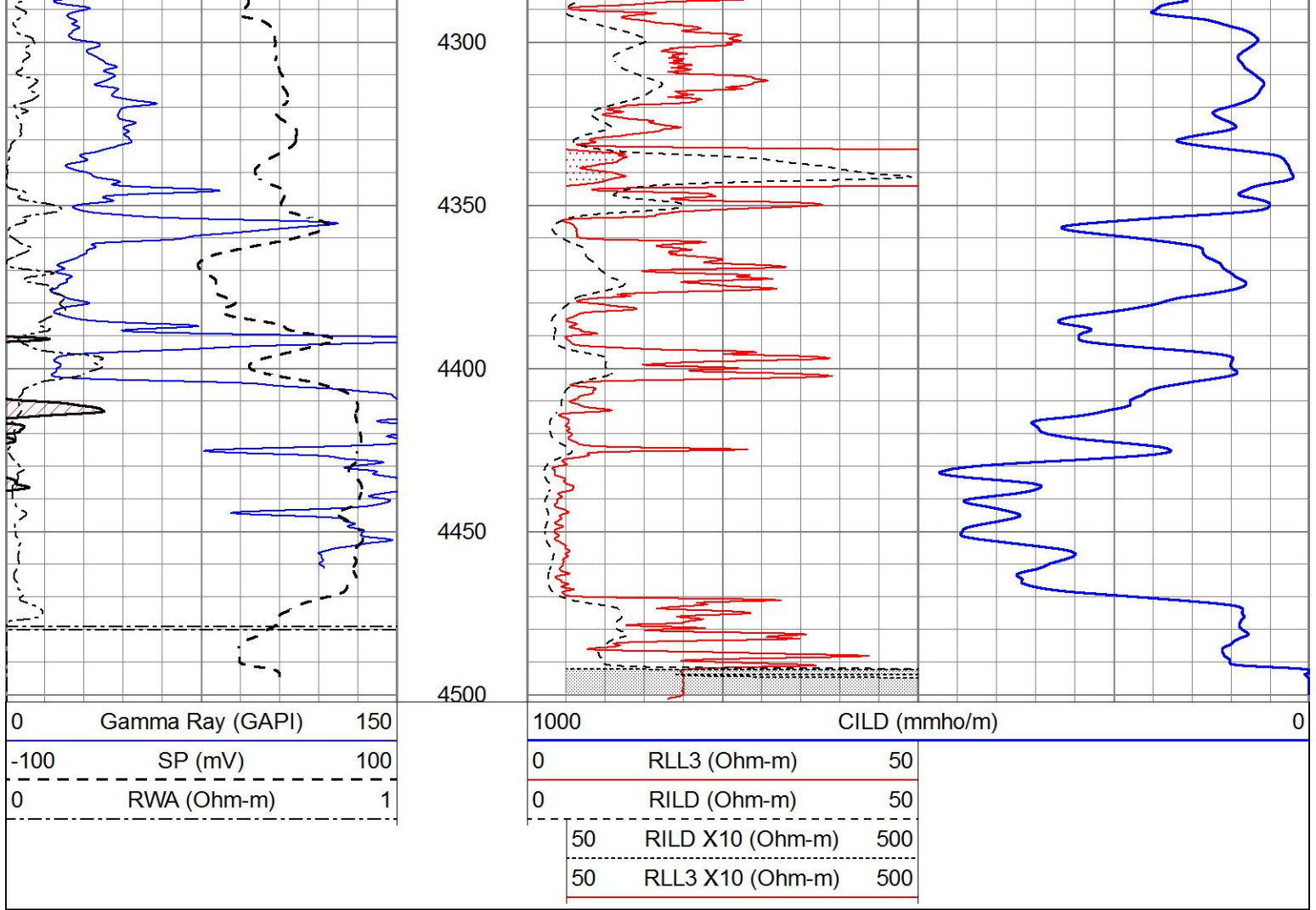
4100

4150

4200

4250



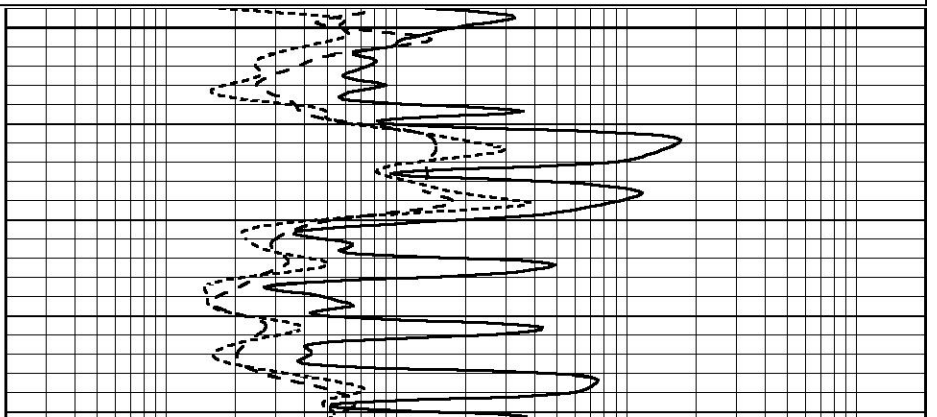
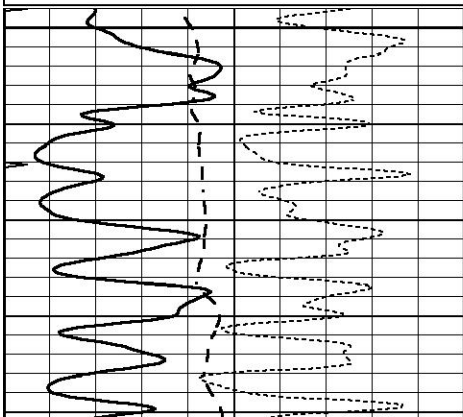


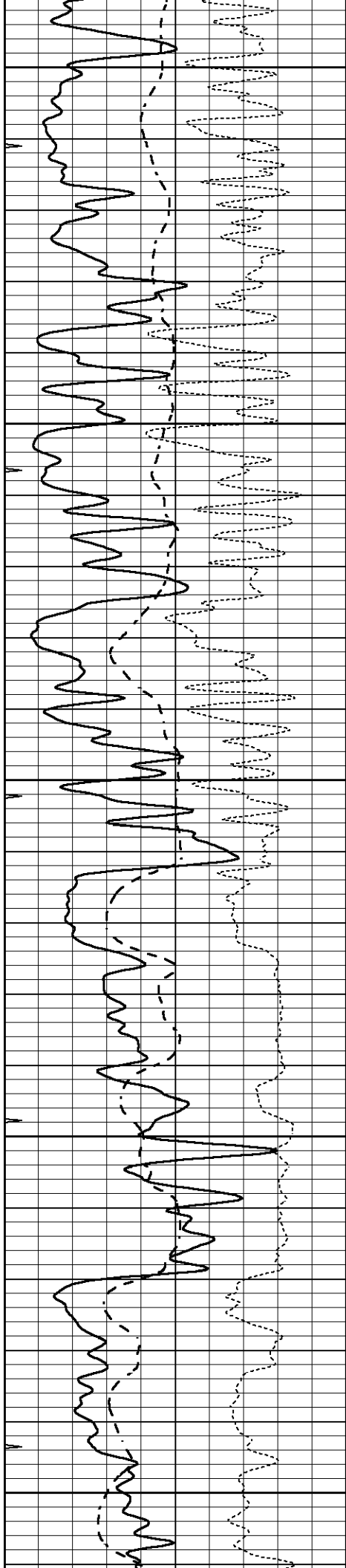
MAIN SECTION

Database File 5275pe.db
 Dataset Pathname pass3.1M
 Presentation Format _dil
 Dataset Creation Thu Jun 10 22:22:17 2021
 Charted by Depth in Feet scaled 1:240

0	GAMMA RAY (GAPI)	150
-100	SP (mV)	100
-250	Rxo/Rt	50
0	MINMK	20

0.2	SHALLOW GUARD (Ohm-m)	2000
0.2	DEEP INDUCTION (Ohm-m)	2000
0.2	MEDIUM INDUCTION (Ohm-m)	2000





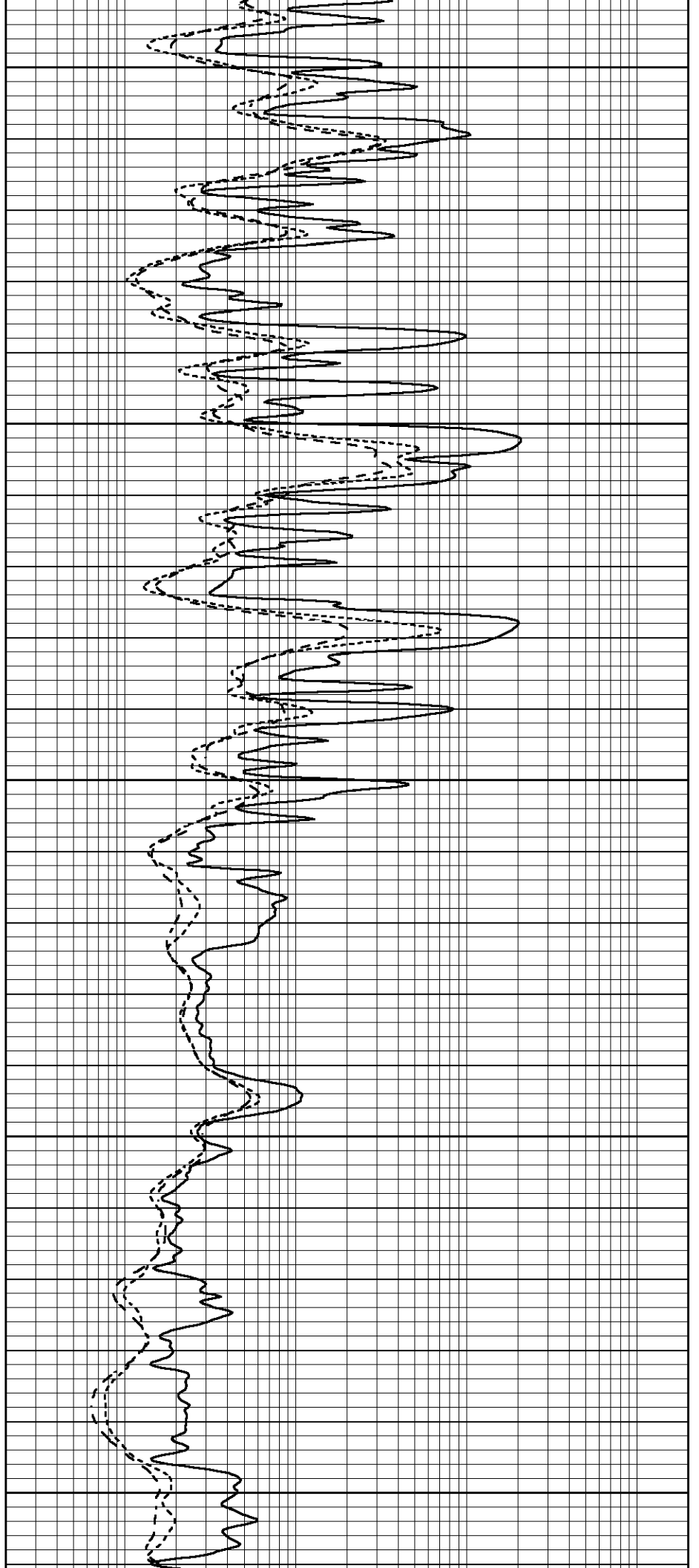
1650

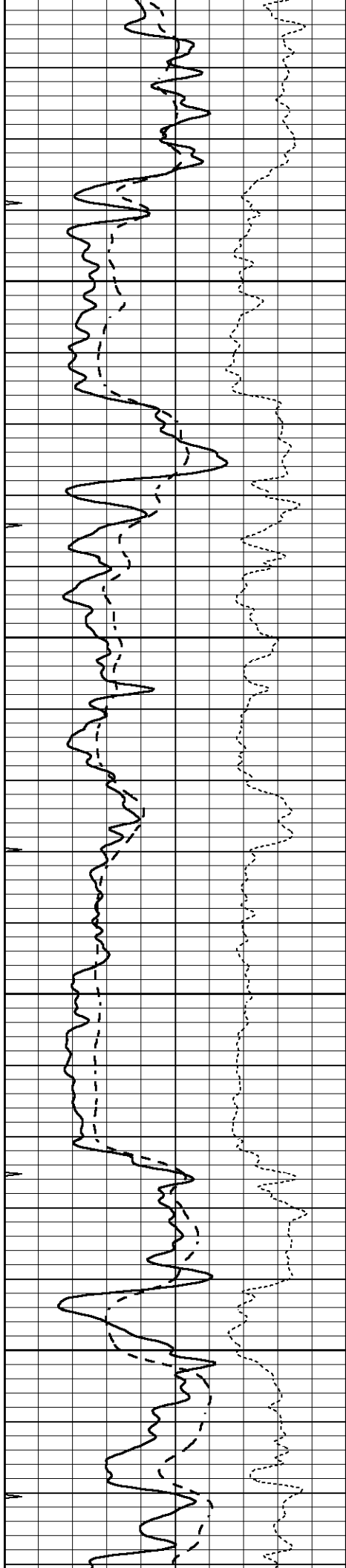
1700

1750

1800

1850



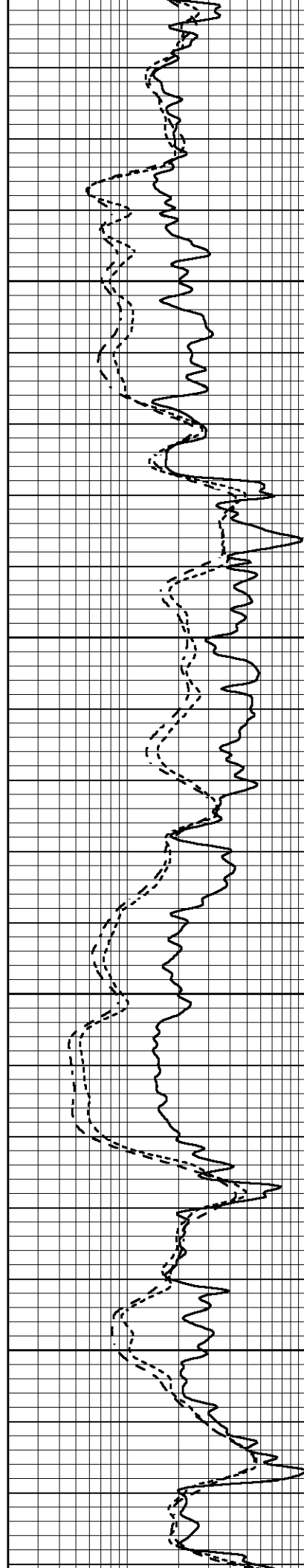


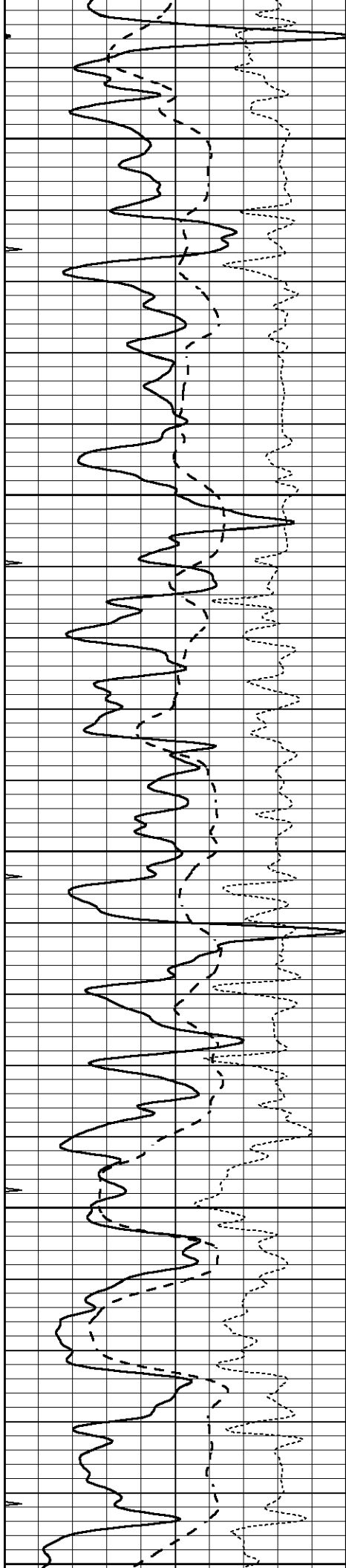
1900

1950

2000

2050





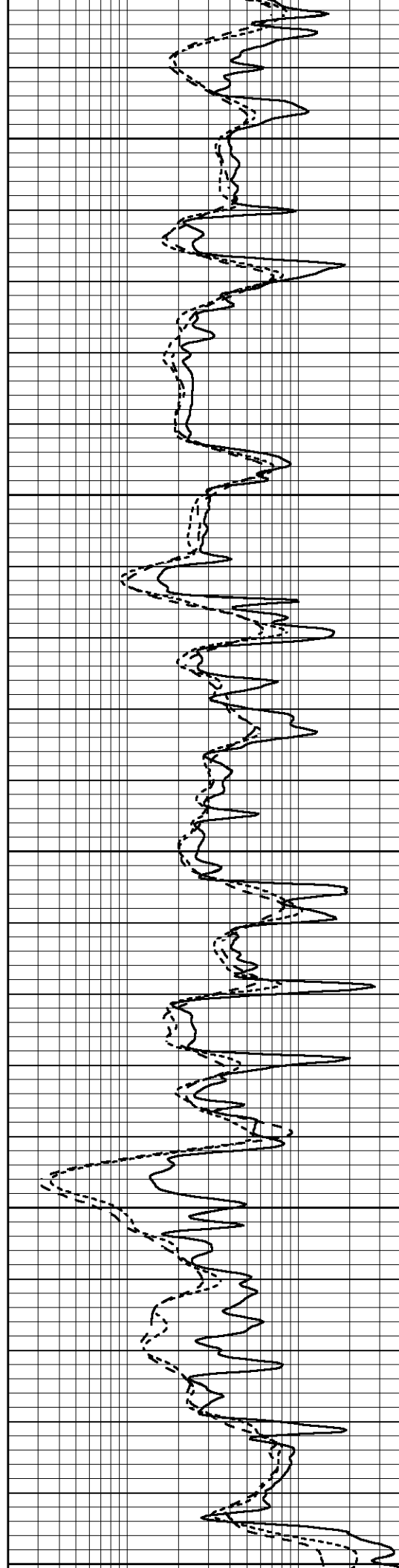
2100

2150

2200

2250

2300



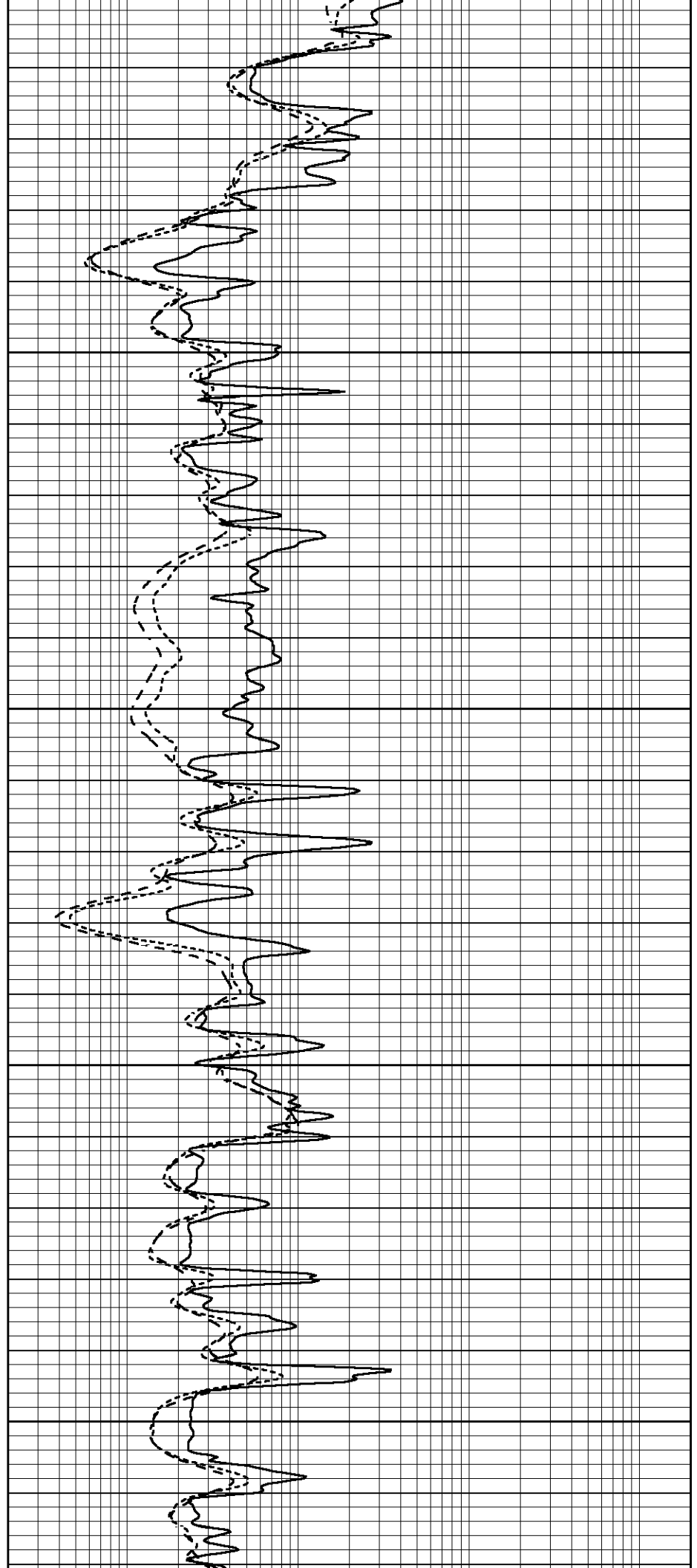
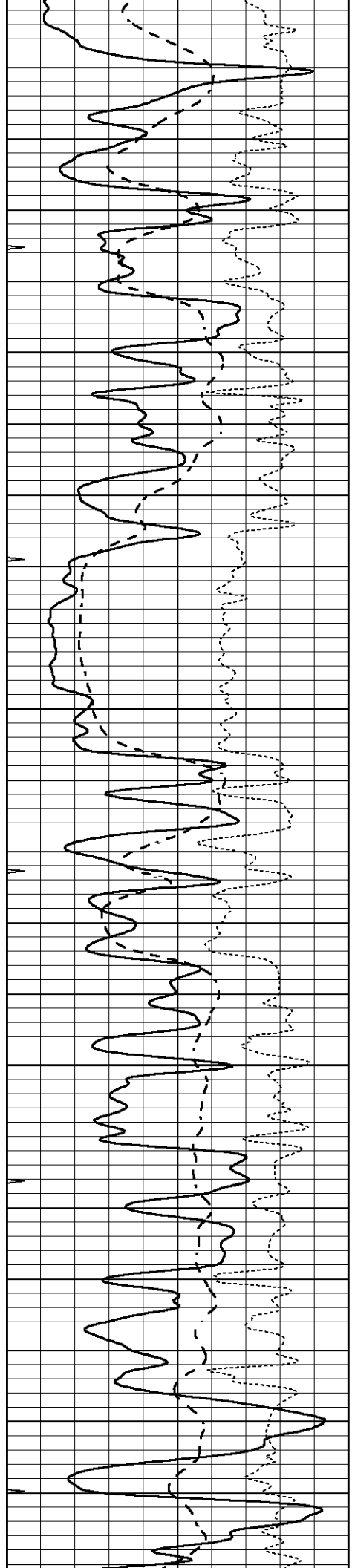
2300

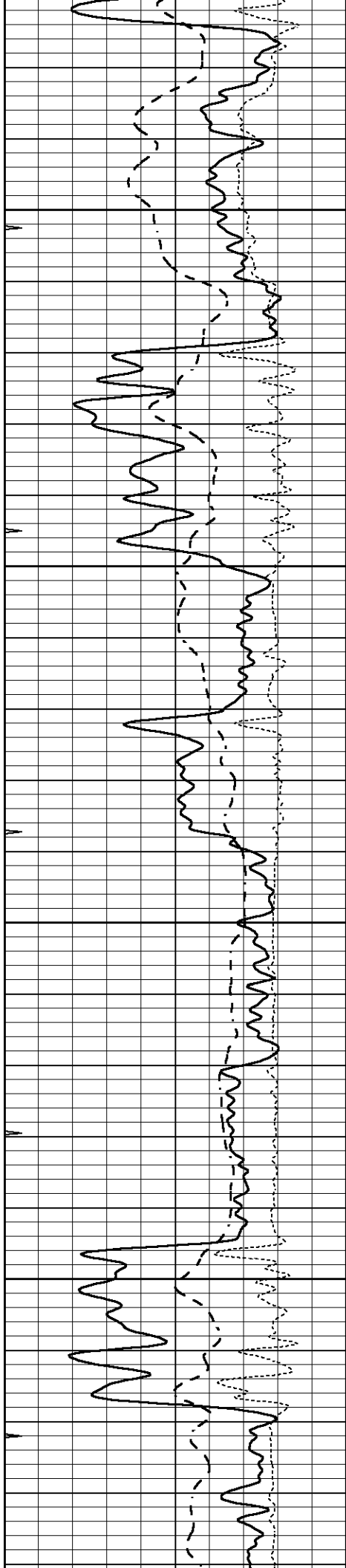
2350

2400

2450

2500



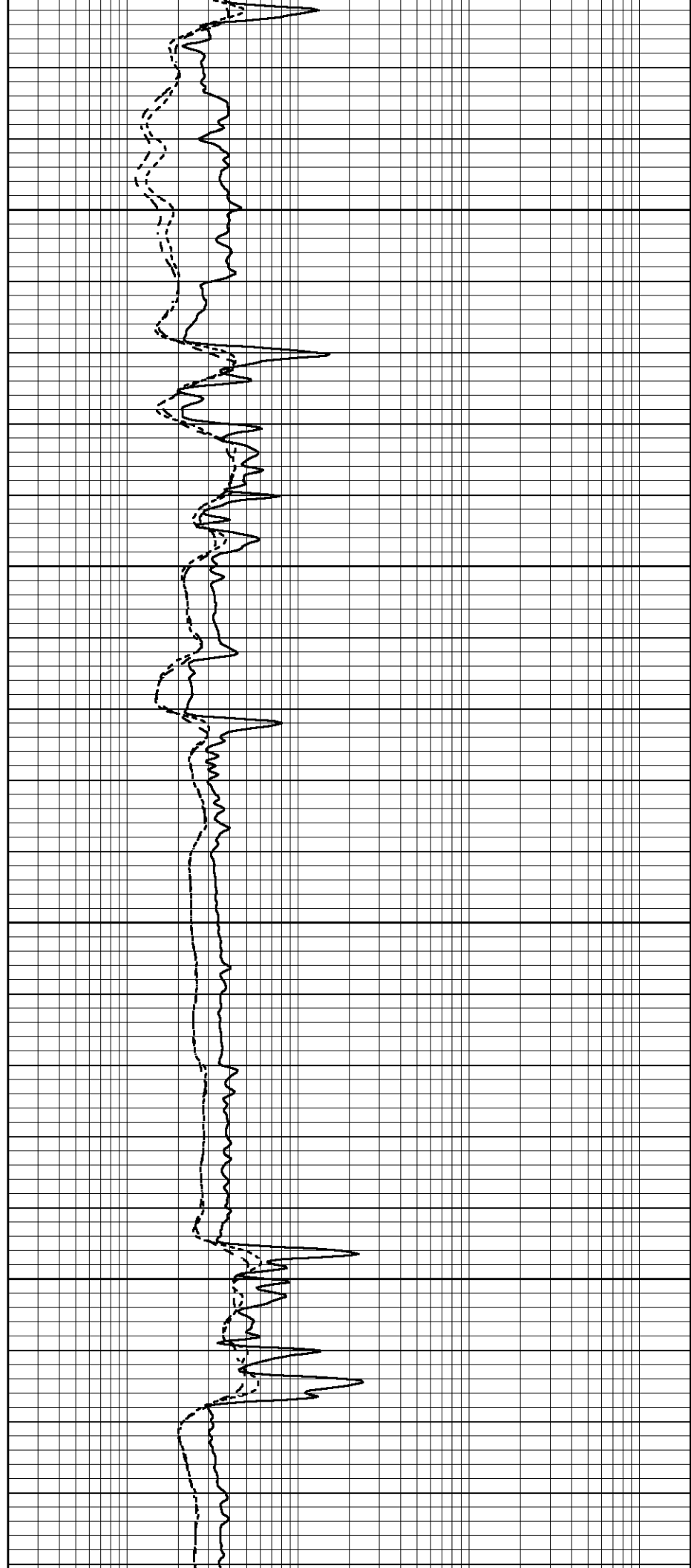


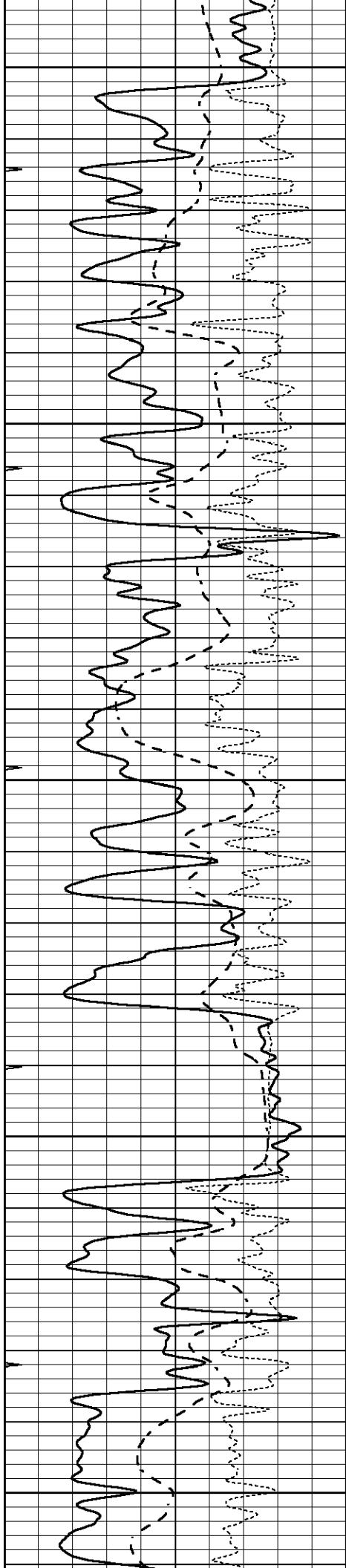
2550

2600

2650

2700





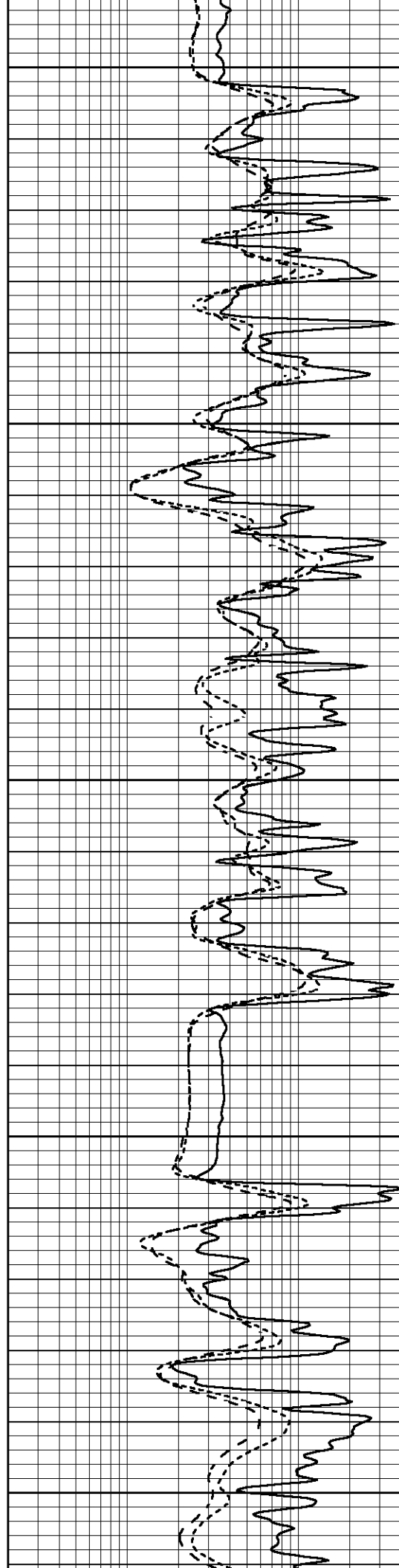
2750

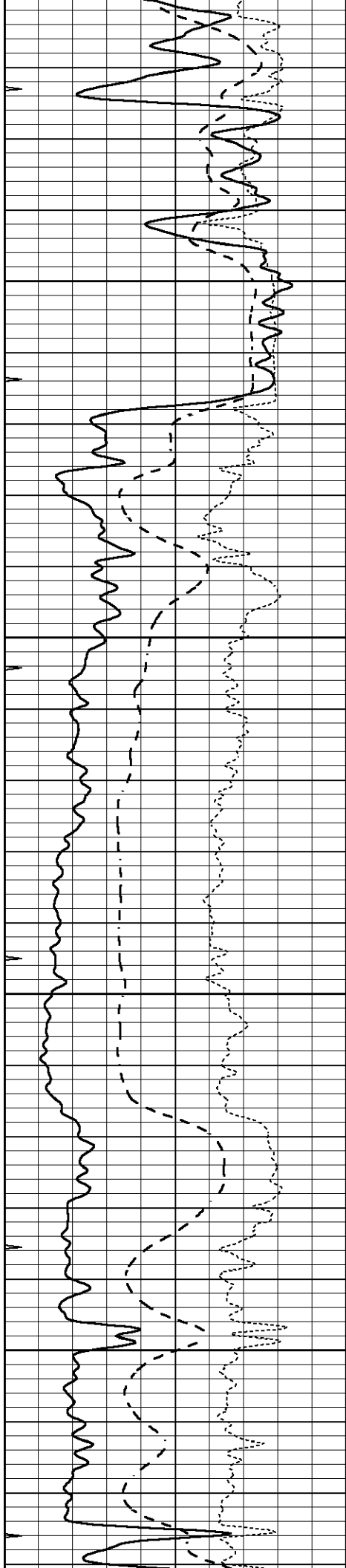
2800

2850

2900

2950



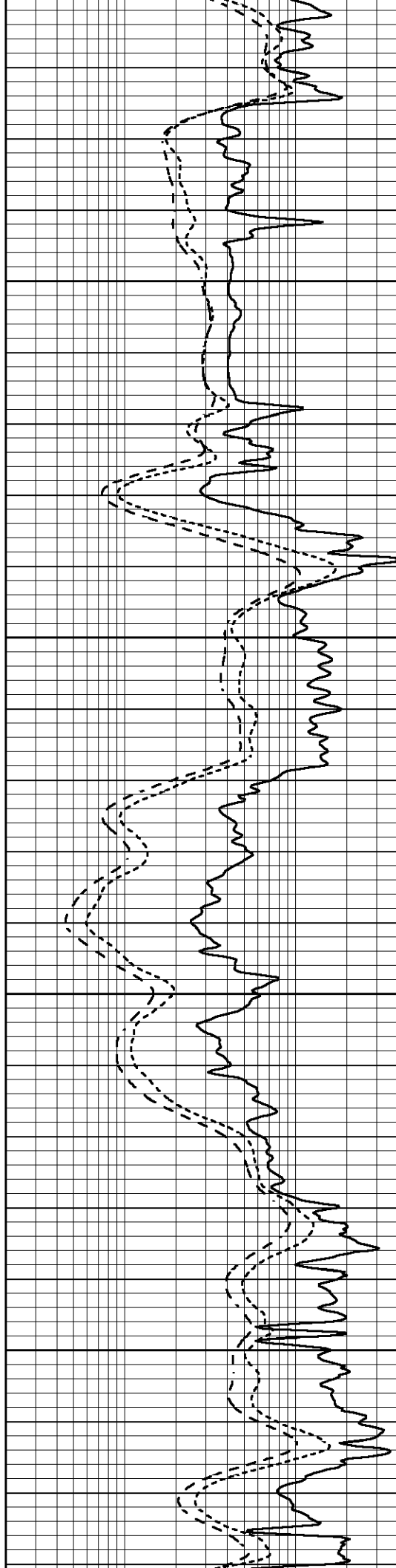


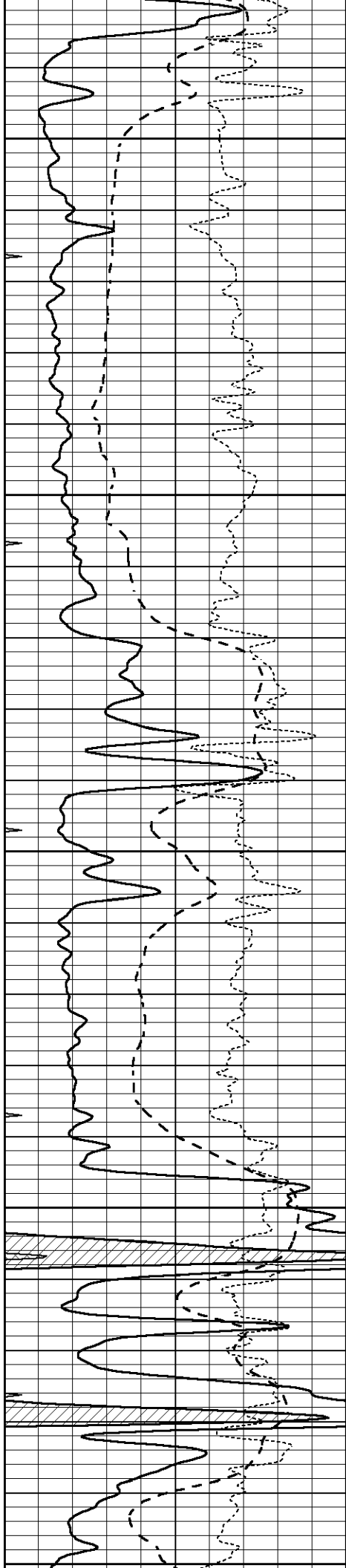
3000

3050

3100

3150





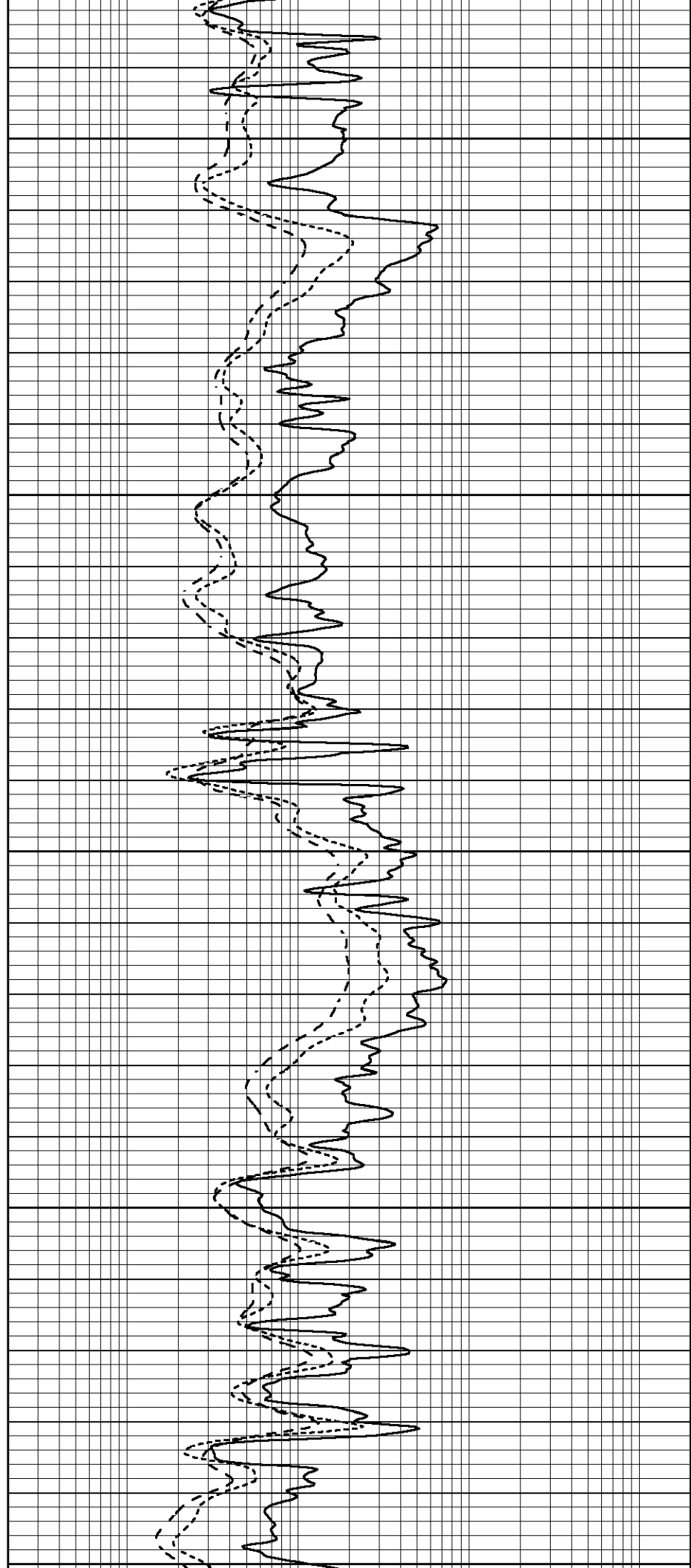
3200

3250

3300

3350

3400



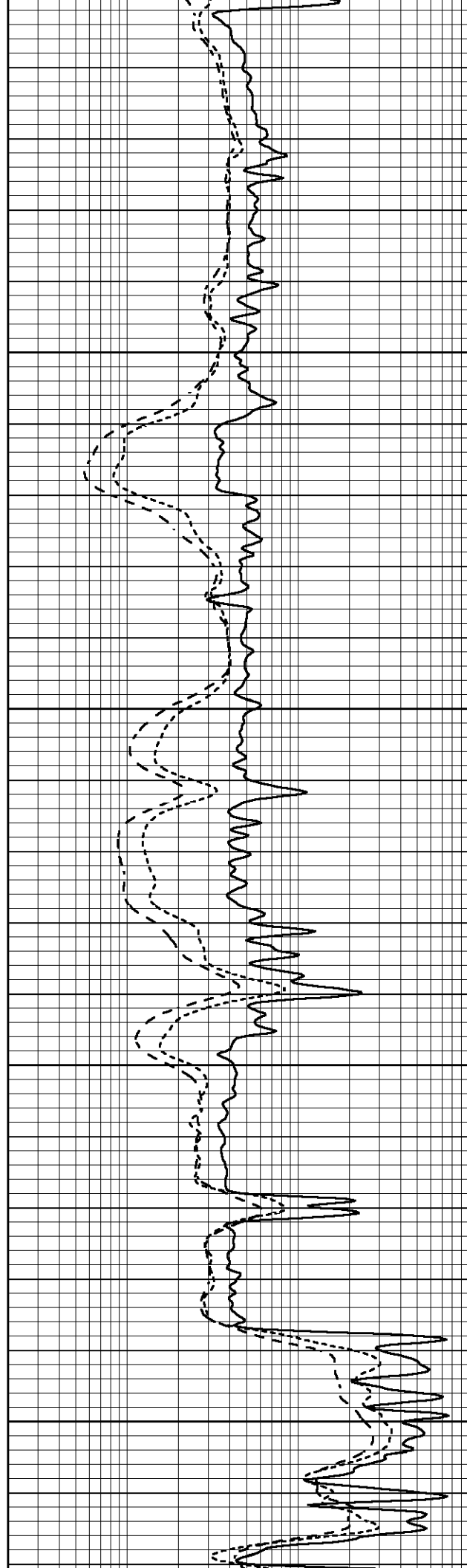
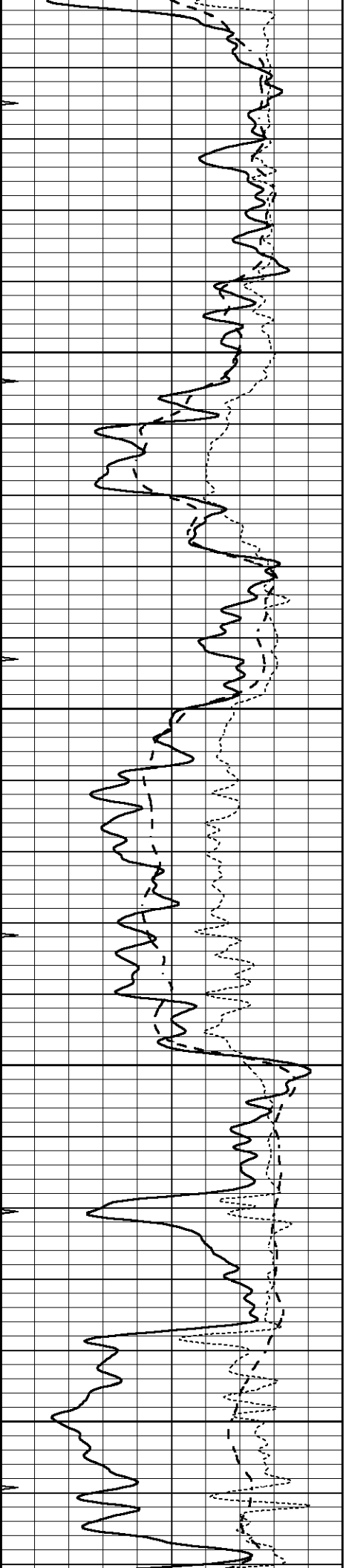
3430

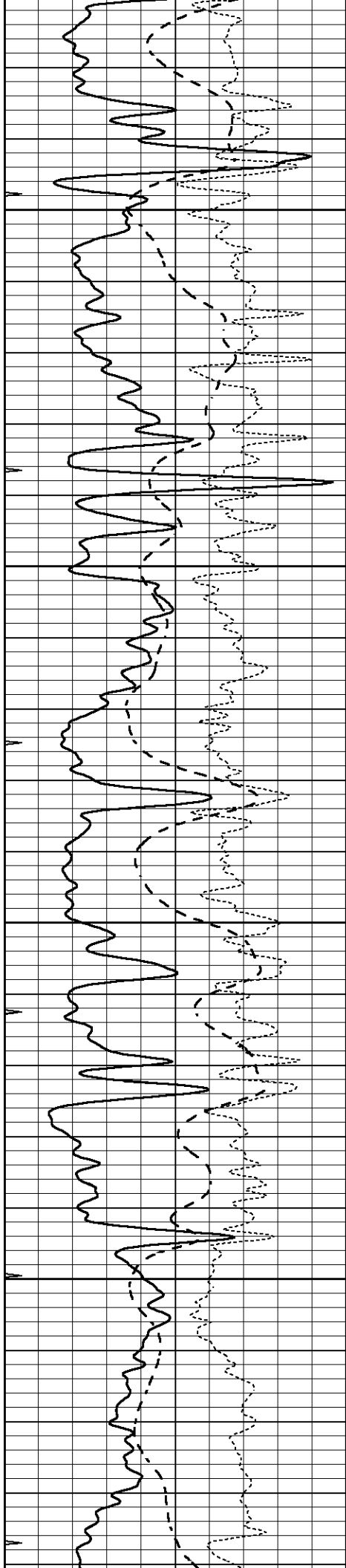
3450

3500

3550

3600



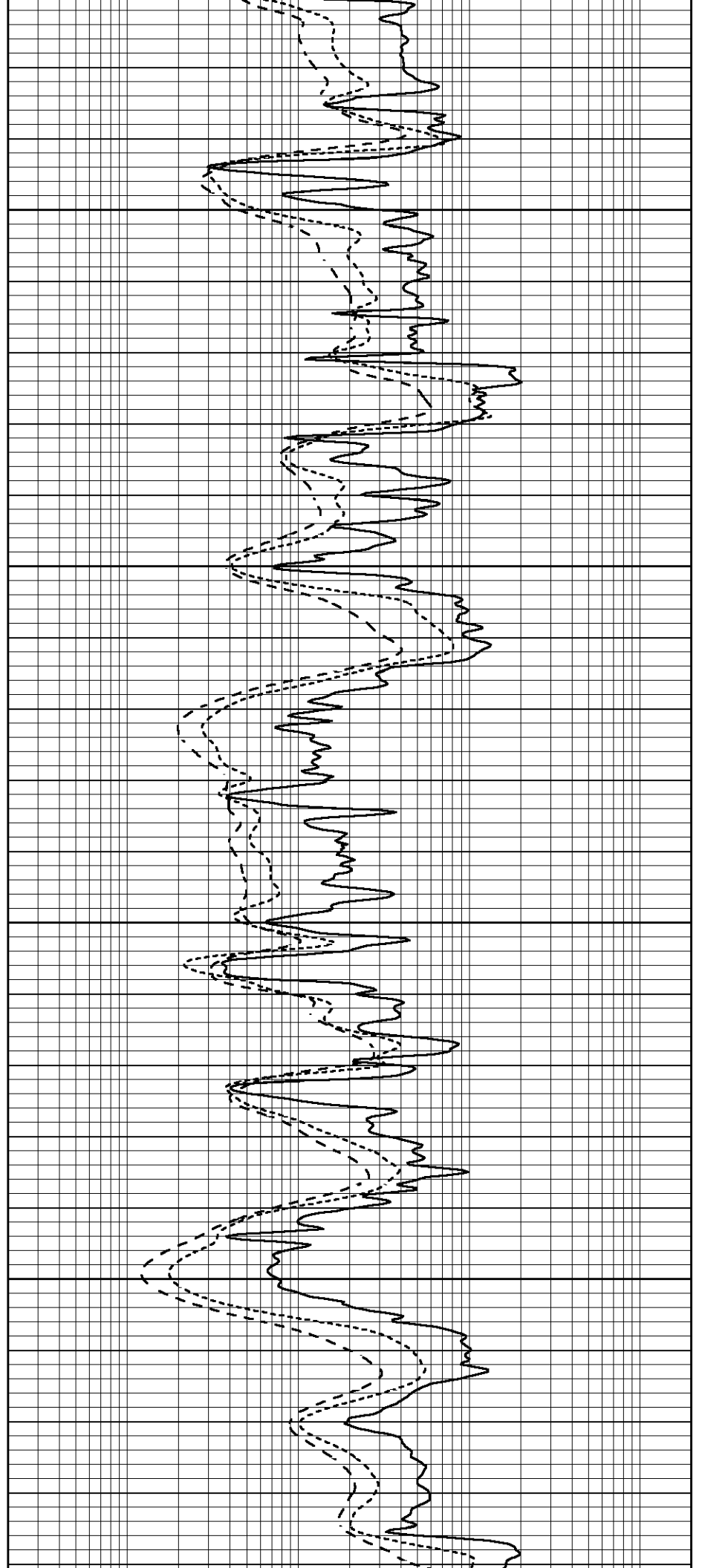


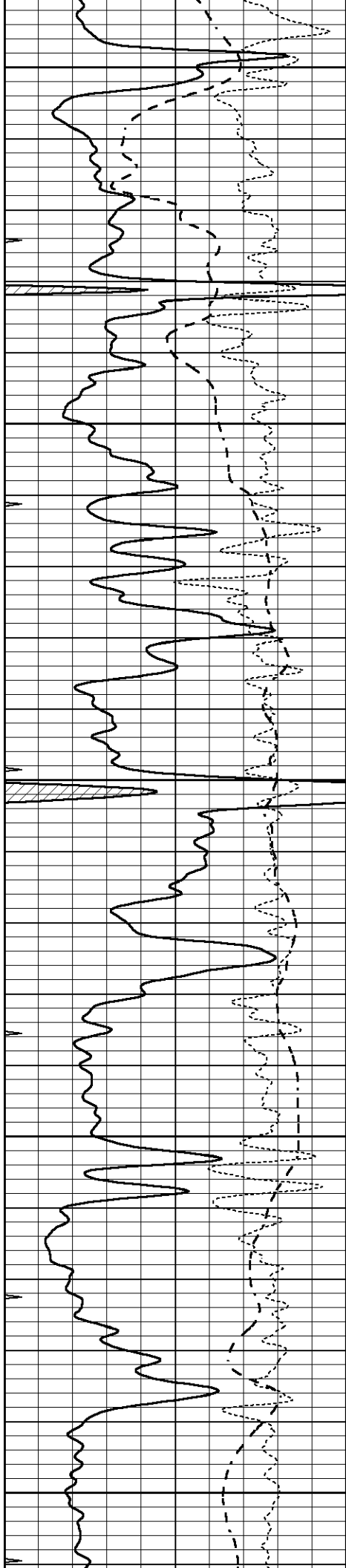
3650

3700

3750

3800





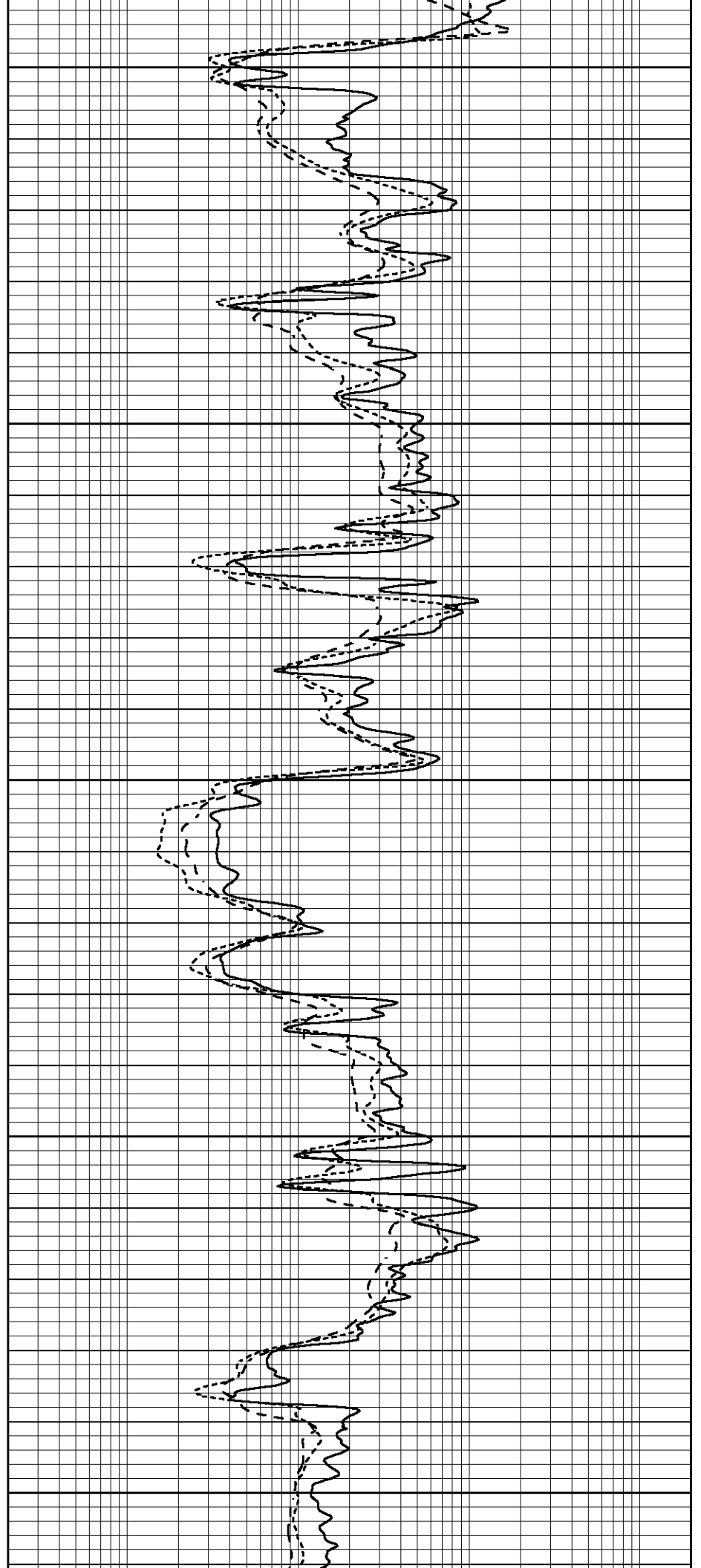
3850

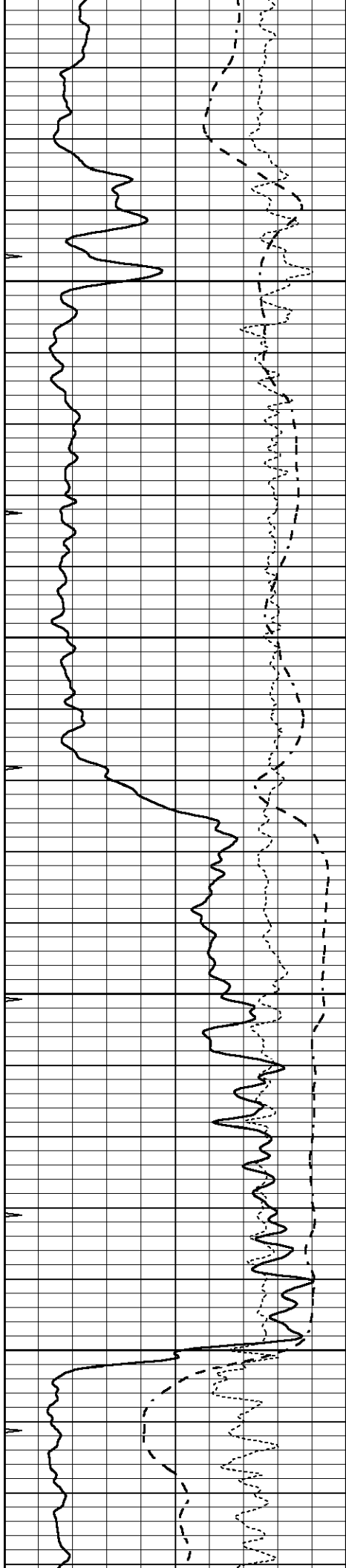
3900

3950

4000

4050



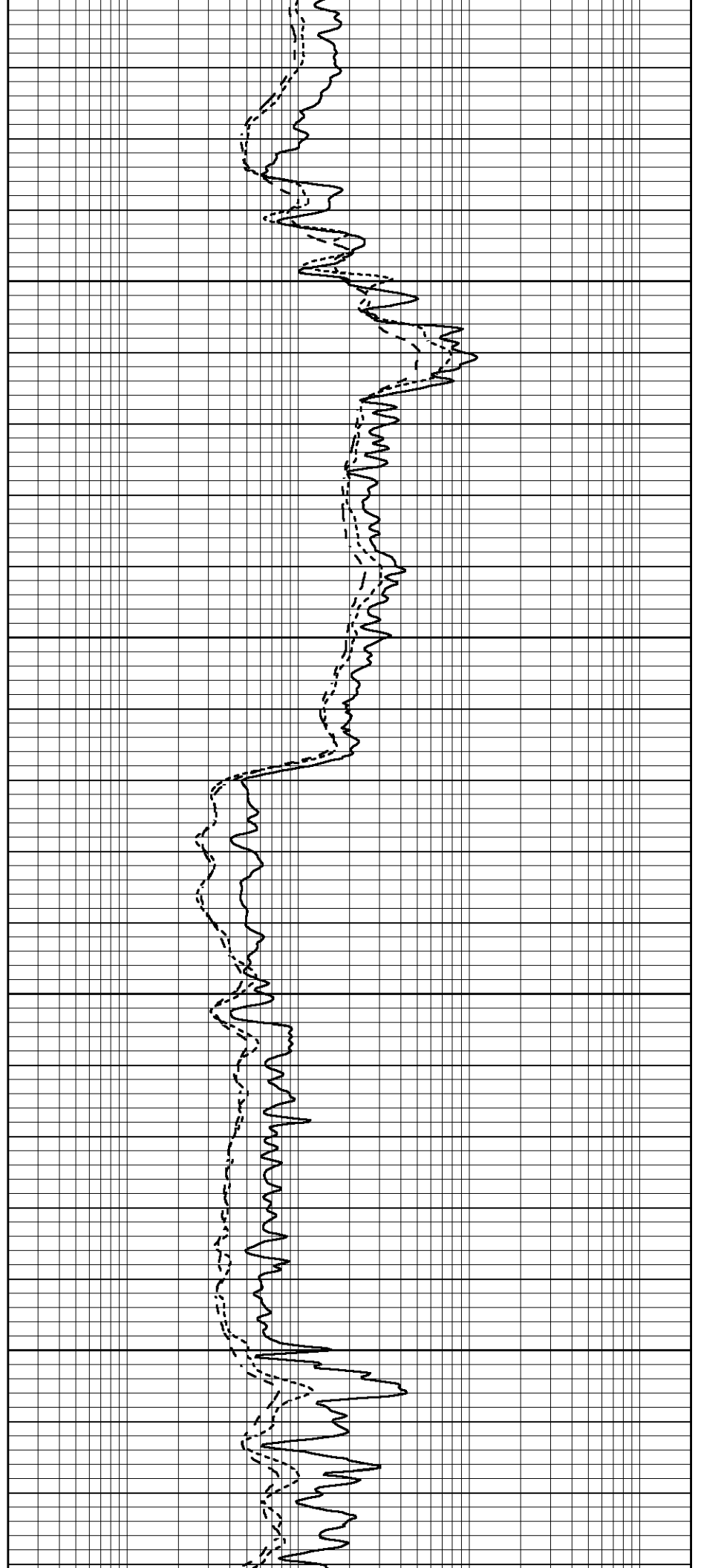


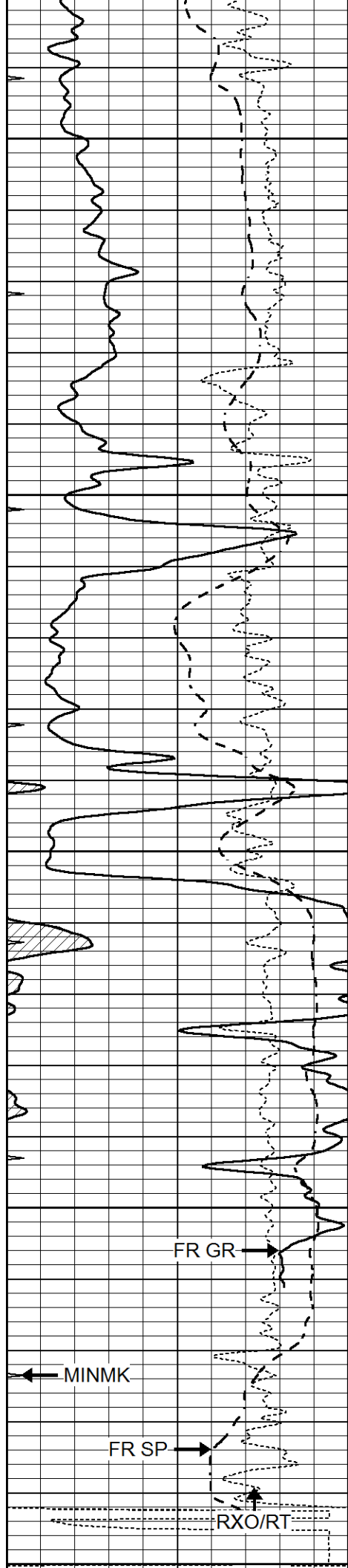
4100

4150

4200

4250





4300

4350

4400

4450

LTD 4494

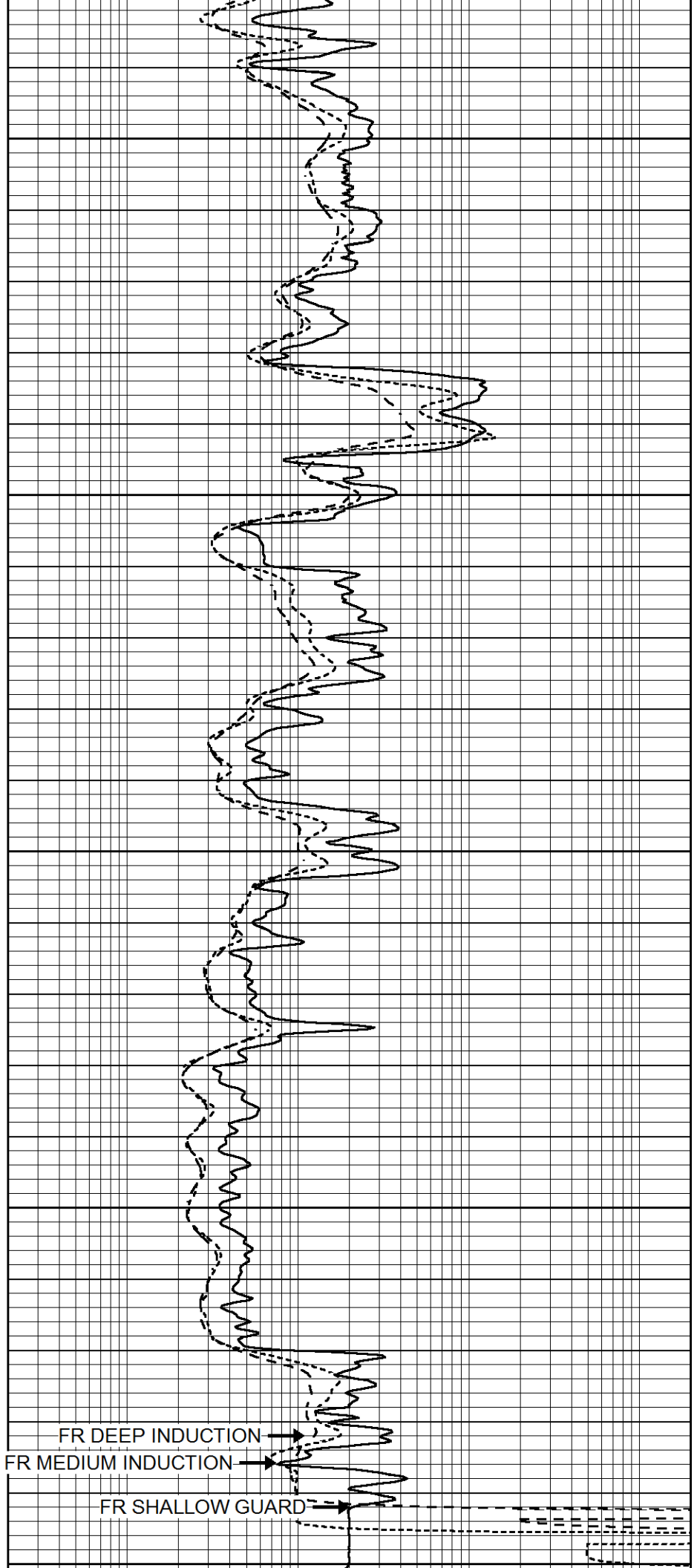
4500

FR GR

MINMK

FR SP

RXO/RT



FR DEEP INDUCTION

FR MEDIUM INDUCTION

FR SHALLOW GUARD

0	GAMMA RAY (GAPI)	150
-100	SP (mV)	100
-250	Rxo/Rt	50
0	MINMK	20

0.2	SHALLOW GUARD (Ohm-m)	2000
0.2	DEEP INDUCTION (Ohm-m)	2000
0.2	MEDIUM INDUCTION (Ohm-m)	2000

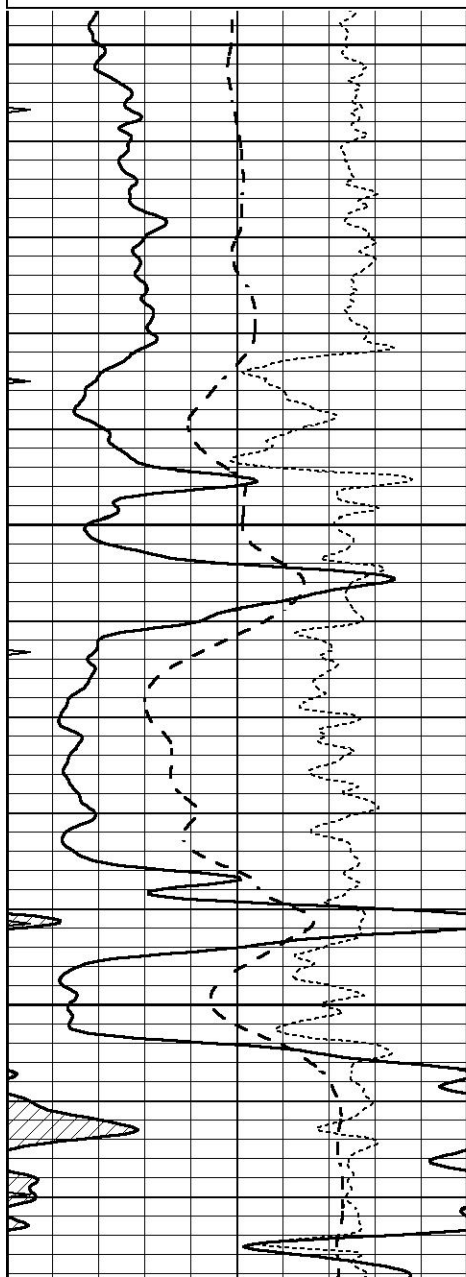


REPEAT SECTION

Database File 5275pe.db
 Dataset Pathname pass2.1R
 Presentation Format _dil
 Dataset Creation Thu Jun 10 22:25:10 2021
 Charted by Depth in Feet scaled 1:240

0	GAMMA RAY (GAPI)	150
-100	SP (mV)	100
-250	Rxo/Rt	50
0	MINMK	20

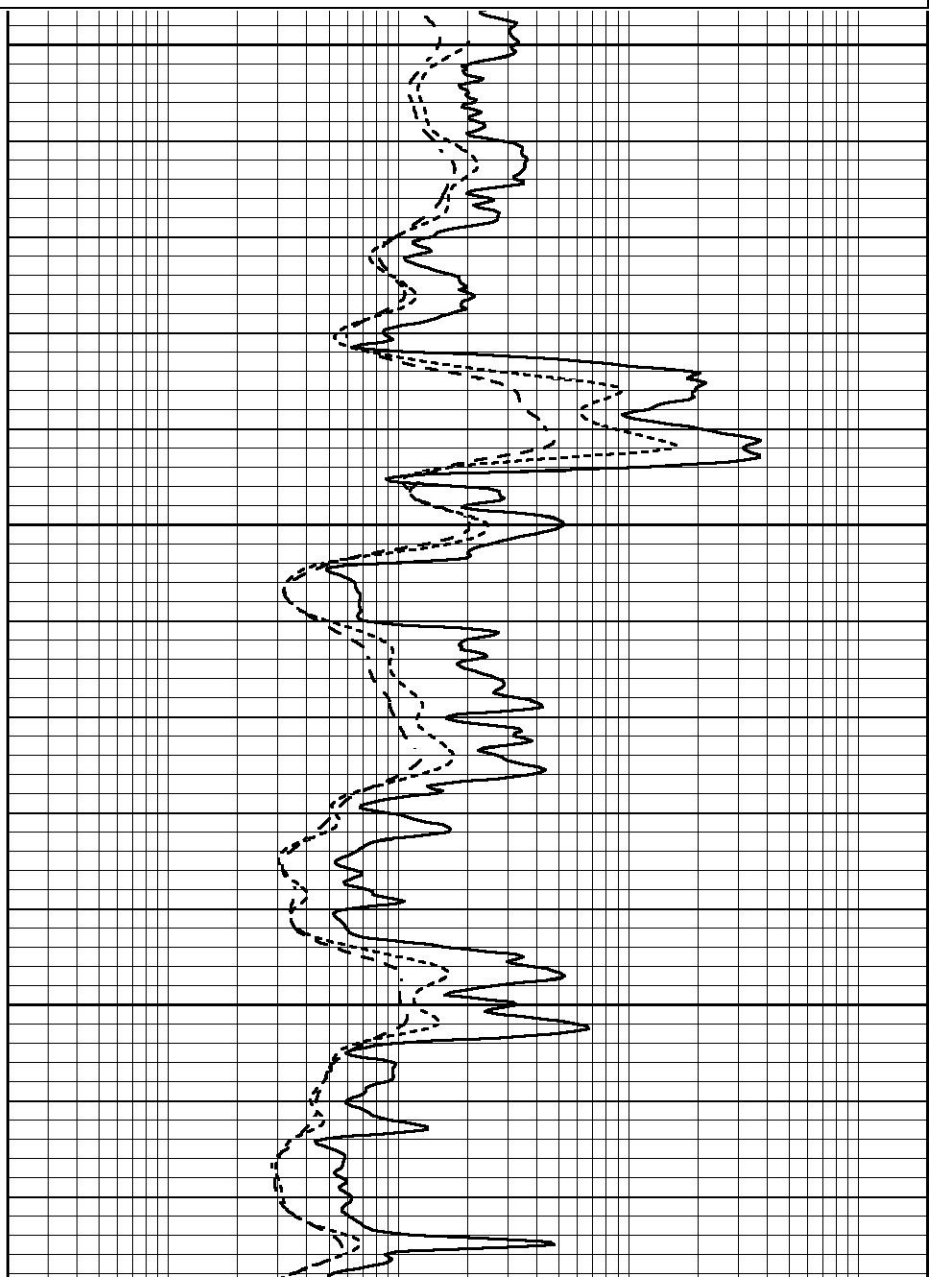
0.2	SHALLOW GUARD (Ohm-m)	2000
0.2	DEEP INDUCTION (Ohm-m)	2000
0.2	MEDIUM INDUCTION (Ohm-m)	2000

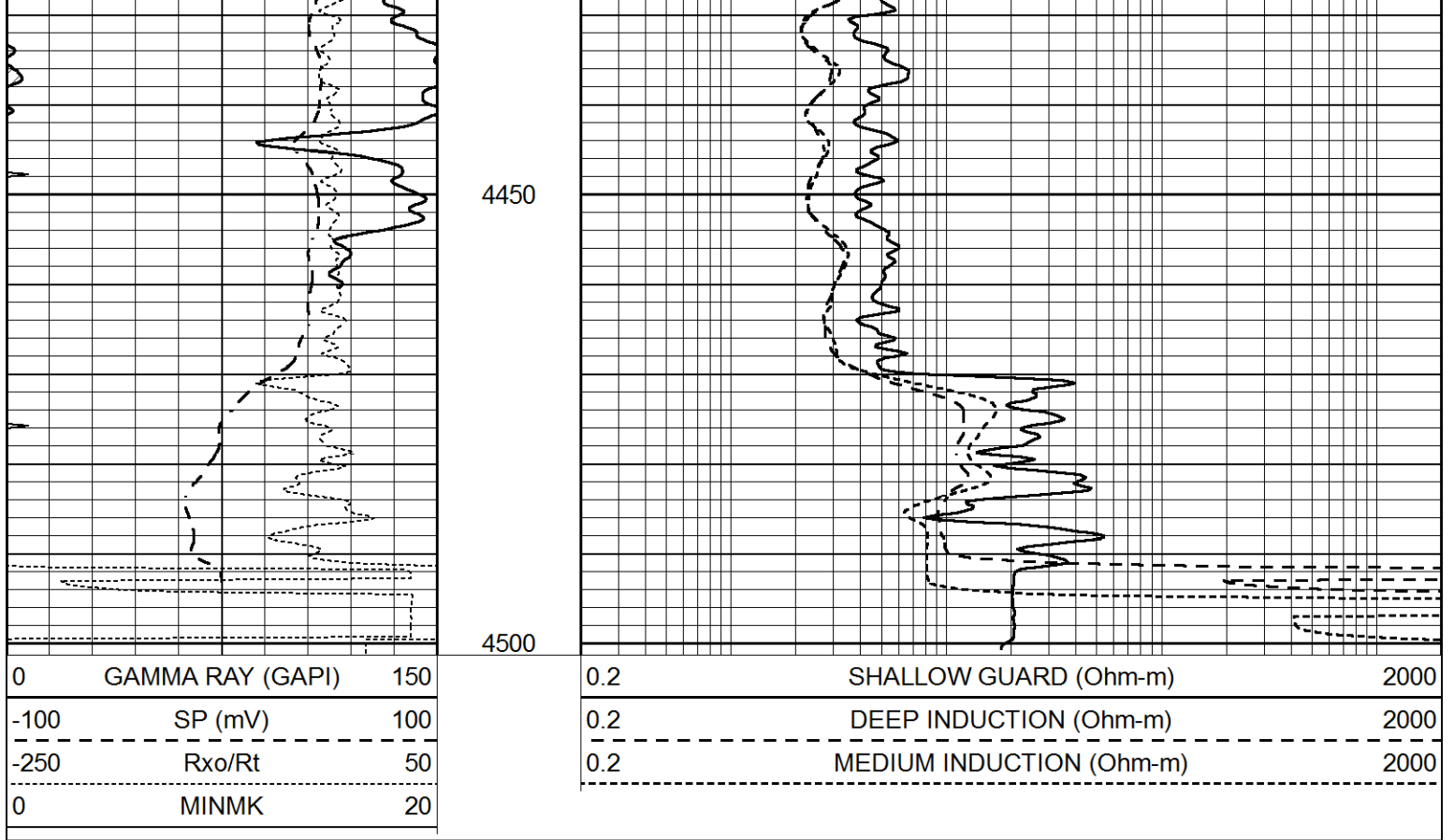


4300

4350

4400





Calibration Report

Database File 5275pe.db
 Dataset Pathname pass3.1M
 Dataset Creation Thu Jun 10 22:22:17 2021

Dual Induction Calibration Report

Serial-Model: PROBE9-DILG
 Surface Cal Performed: Thu Jun 10 20:35:18 2021
 Downhole Cal Performed: Wed Mar 11 11:31:19 2020
 After Survey Verification Performed: Wed Mar 11 11:31:22 2020

Surface Calibration

Loop:	Readings				References			Results	
	Air	Loop	V		Air	Loop	mmho/m	m	b
Deep	-0.014	0.629	V	0.000	400.000	mmho/m	720.000	-12.000	
Medium	0.039	0.728	V	0.000	464.000	mmho/m	720.000	-24.000	
Internal:	Zero	Cal		Zero	Cal		m	b	
Deep	0.011	0.610	V	0.000	400.000	mmho/m	667.135	-7.256	
Medium	0.005	0.712	V	0.000	464.000	mmho/m	655.677	-3.102	

Downhole Calibration

	Readings				References			Results	
	Zero	Cal	V		Zero	Cal	mmho/m	m'	b'
Deep	0.000	0.000	mmho/m	14.508	388.384	mmho/m	1.000	0.000	
Medium	0.000	0.000	mmho/m	166.367	504.400	mmho/m	1.000	0.000	
LL3		7.500	V		1400.000	Ohm-m			
		0.000	V		20.000	Ohm-m			
		-7.200	V		4000.000	mmho-m			

After Survey Verification

	Readings			Targets			Results	
	Zero	Cal		Zero	Cal		m'	b'
Deep	0.000	0.000	mmho/m	0.000	0.000	mmho/m	0.000	0.000
Medium	0.000	0.000	mmho/m	0.000	0.000	mmho/m	0.000	0.000
LL3		1.000	Ohm-m		1.000	Ohm-m		
		0.000	Ohm-m		0.000	Ohm-m		
		1.000	mmho-m		1.000	mmho-m		

Litho Density Calibration Report
Serial: 003 Model: PRB

Master Calibration

Performed Fri Mar 05 10:51:07 2021

	Background	Magnesium	Aluminum	Aluminum+Fe	
Window 1	1570.6	10682.1	3457.0	3096.9	cps
Window 2	1451.7	9432.7	3101.4	2816.5	cps
Window 3	1334.0	7160.6	2532.0	2369.3	cps
Window 4	370.4	373.1	366.4	370.9	cps
Long Space	0.0	7981.0	1649.7	1364.8	cps
Short Space	2.8	3522.0	2211.0	1823.6	cps
Rho		1.7100	2.5900	0.0000	g/cc
Pe		2.0000	2.7500	5.7900	
Rib Angle	: 43.5	Rib Slope	: 0.951	Density/Spine Ratio	: 0.535
Spine Angle	: 73.5	Spine Slope	: 3.386	Spine Intercept	: -18.7

Before Survey Verification

Performed Wed Dec 31 18:00:00 1969

Window 1	0.0	0.0	0.0	0.0	cps
Window 2	0.0	0.0	0.0	0.0	cps
Window 3	0.0	0.0	0.0	0.0	cps
Window 4	0.0	0.0	0.0	0.0	cps
Long Space	0.0	0.0	0.0	0.0	cps
Short Space	0.0	0.0	0.0	0.0	cps
Measured Rho		0.0000	0.0000	0.0000	g/cc
Measured Correction		0.0000	0.0000	0.0000	g/cc
Measured Pe			0.0000	0.0000	

After Survey Verification

Performed Wed Dec 31 18:00:00 1969

Window 1	0.0	0.0	0.0	0.0	cps
Window 2	0.0	0.0	0.0	0.0	cps
Window 3	0.0	0.0	0.0	0.0	cps
Window 4	0.0	0.0	0.0	0.0	cps
Long Space	0.0	0.0	0.0	0.0	cps
Short Space	0.0	0.0	0.0	0.0	cps
Measured Rho		0.0000	0.0000	0.0000	g/cc
Measured Correction		0.0000	0.0000	0.0000	g/cc
Measured Pe			0.0000	0.0000	

Compensated Neutron Calibration Report

Serial Number: 070808PMC
Tool Model: NABORS

PRE-SURVEY VERIFICATION

Detector	Readings	Measured	Target
----------	----------	----------	--------

Short Space
Long Space

cps
cps

pu

pu

POST-SURVEY VERIFICATION

Detector

Readings

Measured

Target

Short Space
Long Space

cps
cps

pu

pu

Gamma Ray Calibration Report

Serial Number: 070558
Tool Model: OPEN_GR
Performed: Fri Apr 16 13:57:16 2021

Calibrator Value: 1.0 GAPI

Background Reading: 0.0 cps
Calibrator Reading: 1.0 cps

Sensitivity: 0.3000 GAPI/cps