

LEETH EVALUATION

Company	SIROKY OIL MANAGEMENT					
Well	FINCHAM #1-25					
Field	BARNES					
County	PRATT					
State	KANSAS					
Location	SEC 25	TWP 27S	RGE 12W			
Spot	335' FSL & 335' FEL					
API Well Number	15-151-22529-0000					
Permanent Datum	GROUND LEVEL			Elevation		
Log Measured From	K.B.			K.B.		
Drilling Measured From	KELLY BUSHING			D.F. G.L.		
Description	Zone 1	Zone 2	Zone 3	Zone 4	Zone 5	Zone 6
Date	06/15/21					
Top Parameter Depth	3700	4036				
Bottom Parameter Depth	4036	4450				
Bit Size	7.875					
BHT	121					
Rmf @ FT	0.58	0.58				
Rw @ FT	0.043	0.06				
Location	WICHITA					
Evaluation By	R. LEETH					
Recommended Perf / SPF						
Recommended Perf / SPF						

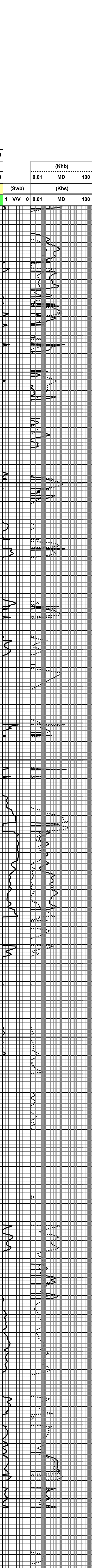
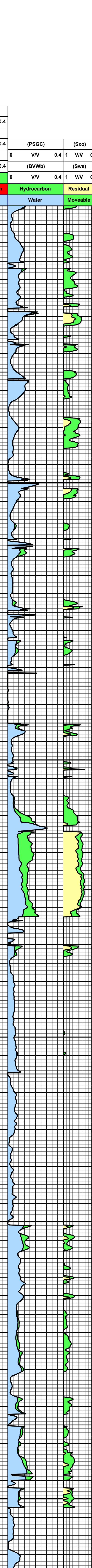
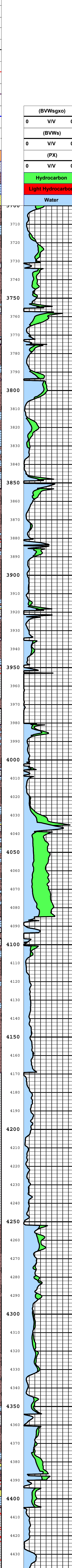
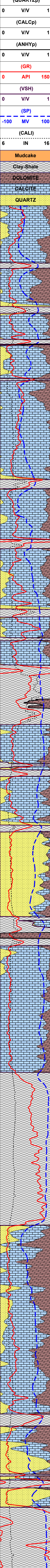
We do not guarantee results, nor make warranties either expressly or implied. Under no circumstances shall we be liable for damages relative to this evaluation.

LOG DATA

Name	Description
DEPTH.FT	depth
CNPOR.PU	Compensated Neutron porosity
DCAL.IN	Compensated Density caliper
DPOR.PU	Compensated Density porosity
GR.API	gamma ray
MEL15.OHM-M	1.5 inch Microinverse resistivity
MEL20.OHM-M	2 inch Micronormal resistivity
MELCAL.IN	Microlog caliper
PE.	Photoelectric Pffect
RHCC.G/CC	Compensated Density correction
RILD.OHM-M	Deep Induction resistivity
RILM.OHM-M	Medium Induction resistivity
RL3.OHM-M	Short Guard resistivity
RxoRt.	ratio of shallow resistivity to deep resistivity
SP.MV	spontaneous potential
SPOR.PU	Sonic porosity

EVALUATION DATA

Name	Description
DEPTH.FT	depth
BIT.IN	bit size
BVWb.V/V	bulk volume water in matrix porosity system
BVWs.V/V	bulk volume water in secondary porosity system
BVWsgxo.V/V	bulk volume water in the flushed zone system
CALI.IN	caliper
Dh.G/CC	hydrocarbon density
DMAA.G/CC	apparent matrix density
DSRGIP.MMCFG	delta sum recoverable gas in place
DSROIP.BO	delta sum recoverable oil in place
DSUMQg.MCFGPD	delta sum of productive gas
DSUMQo.BOPD	delta sum of productive oil
DSUMQw.BWPD	delta sum of productive water
GR.API	gamma ray
Khb.MD	permeability to hydrocarbon from matrix porosity system
Khs.MD	permeability to hydrocarbon from secondary porosity system
ms.DEC	cementation exponent for secondary porosity system
OOM.DEC	ooidic flag
PSGC.V/V	gas corrected sonic porosity
PX.V/V	crossplot porosity
Rds.CHMM	calculated deep resistivity
SP.MV	spontaneous potential
SUMQg.MCFGPD	sum of productive gas
SUMQo.BOPD	sum of productive oil
SUMQw.BWPD	sum of productive water
SUMRGIP.MMCFG	sum of recoverable gas in place
SUMROIP.BO	sum of recoverable oil in place
Swb.V/V	water saturation in matrix porosity system
Sws.V/V	water saturation in secondary porosity system
Sxo.V/V	water saturation of the flushed zone
VSH.V/V	shale volume



Hydrocarbon Light Hydrocarbon Water Hydrocarbon Water Residual Moveable (Swb) (Khs)