



MIDWEST WIRELINE

# MICRORESISTIVITY LOG

Company Val Energy, Inc.  
 Well Johnson #2-25 OWWO SWD  
 Field Dexter  
 County Cowley  
 State Kansas

Company Val Energy, Inc.  
 Well Johnson #2-25 OWWO SWD  
 Field Dexter  
 County Cowley  
 State Kansas

Location: API #: 15-035-00553-00-01  
 1650 FSL & 2310 FEL  
 SEC 25 TWP 33S RGE 6E  
 Other Services  
 CNL/CDL  
 DIL

Date	11/3/2021
Run Number	One
Depth Driller	3275
Depth Logger	3269
Bottom Logged Interval	3268
Top Log Interval	800
Casing Driller	8.625 @ 111
Casing Logger	119
Bit Size	7.875
Type Fluid in Hole	Chemical
Salinity, ppm CL	15000
Density / Viscosity	8.6 53
pH / Fluid Loss	7.0
Source of Sample	FLOWLINE
Rm @ Meas. Temp	.2 @ 68
Rmt @ Meas. Temp	.15 @ 68
Rmc @ Meas. Temp	.27 @ 68
Source of Rmf / Rmc	CHARTS
Rm @ BHT	.13 @ 109
Operating Rig Time	2 Hours
Max Rec. Temp. F	109
Equipment Number	P-108
Location	HAYS
Recorded By	J. Henrickson
Witnessed By	Brandon Wolfe

<<< Fold Here >>>

All interpretations are opinions based on inferences from electrical or other measurements and Midwest Wireline LLC cannot and does not guarantee the accuracy or correctness of any interpretation, and Midwest Wireline LLC will not be liable or responsible for any loss, costs, damages, or expenses incurred or sustained by anyone resulting from any interpretation made by any of our officers, agents or employees.

### Comments

N/A DENOTES NOT AVAILABLE OR NON-APPLICABLE.

Dexter Kansas  
 South to 231, East/South Into

No Repeat Due to Hole Conditions

Log Measured From: Kelly Bushing 9 Ft. Above Permanent Datum

THANK YOU FOR USING MIDWEST WIRELINE LLC  
 785-625-3858

### Your Midwest Wireline Crew

Engineer: J. Henrickson  
 Operator:  
 Operator:  
 Operator:

### This Log Record Was Witnessed By

Primary Witness: Brandon Wolfe  
 Secondary Witness:  
 Secondary Witness:  
 Secondary Witness:

# Log Variables

DatabaseC:\ProgramData\Warrior\Data\val\_johnson\_2\_25\_owwo\_swd.db  
Dataset field/well/stackml/pass3.1/\_vars\_

## Top - Bottom

A	BOREID in	BOTTEMP degF	CASEOD in	CASETHCK in	FLUIDDEN g/cc	M	MATRXDEN g/cc
1	7.875	109	5.5	0	1	2	2.71
NPORSEL	PERFS	SNDERR mmho/m	SNDERRM mmho/m	SPSHIFT mV	SRFTEMP degF	SZCOR	TDEPTH ft
Limestone	0	0	0	-180	64	Off	3269

Sensor	Offset (ft)	Schematic	Description	Length (ft)	O.D. (in)	Weight (lb)
GR	40.58		GR-M&W (89-M&W)	3.00	3.50	50.00
CNLSC CNSSC	37.48 36.73		CNT-PSI (43)	5.50	3.50	100.00
LSD DCAL SSD	28.43 28.42 27.93		CDL-M&W (915-956)	8.50	4.00	250.00
MCAL MI MN	19.83 19.83 19.83		ML-PSI STKBL ML (PSI-02) Stackable Microlog Tools	7.58	4.00	65.00
RLL3F RLL3	15.80 15.80					
CILD	8.00		DIL-PSI HIGH TEMP (959-1032)	18.50	3.50	220.00

CILM 4.70

SP 0.20

Dataset: val\_johnson\_2\_25\_owwo\_swd.db: field/well/stackml/pass3.1  
 Total length: 43.08 ft  
 Total weight: 685.00 lb  
 O.D.: 4.00 in



MIDWEST WIRELINE

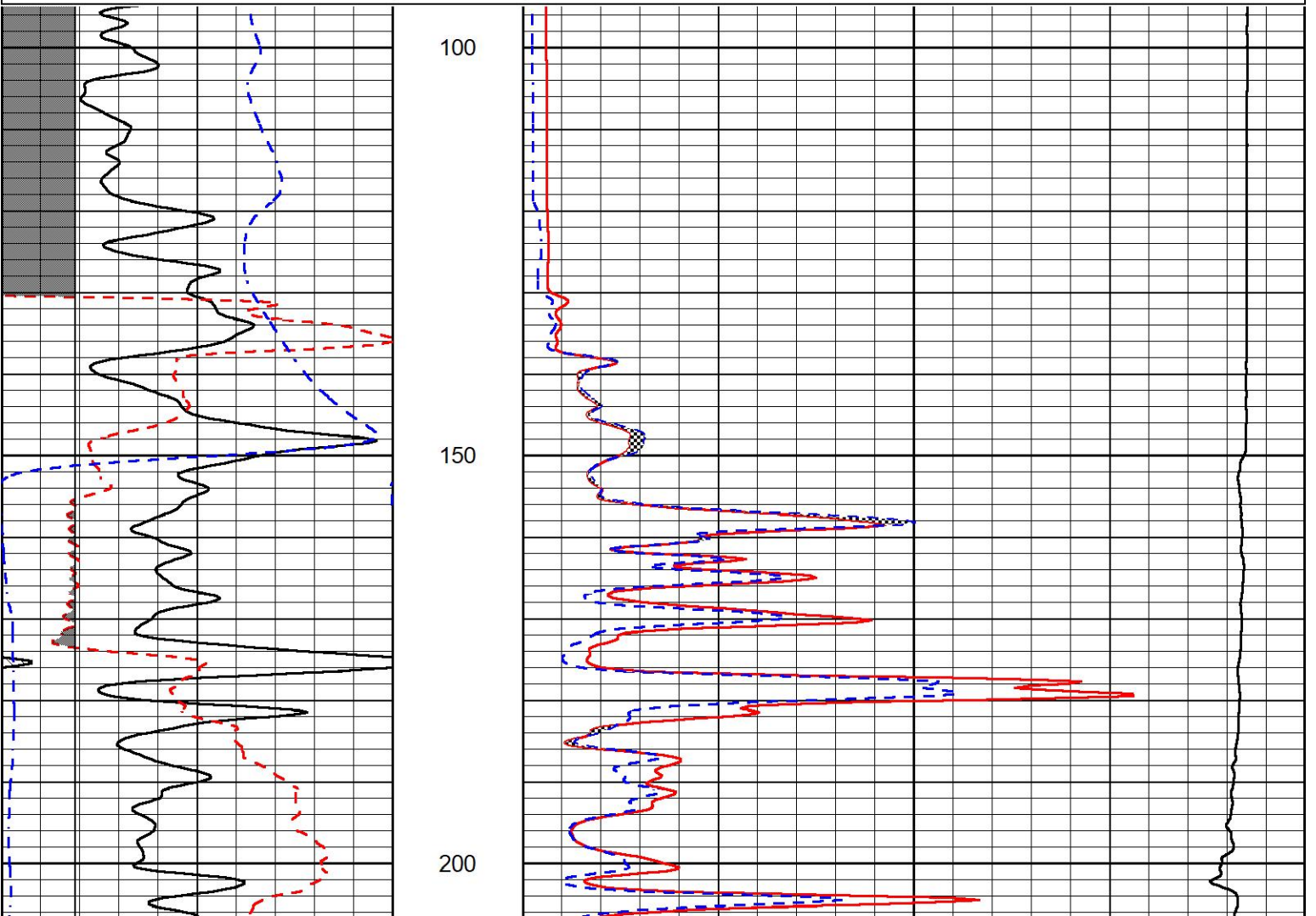
# DETAIL SECTION

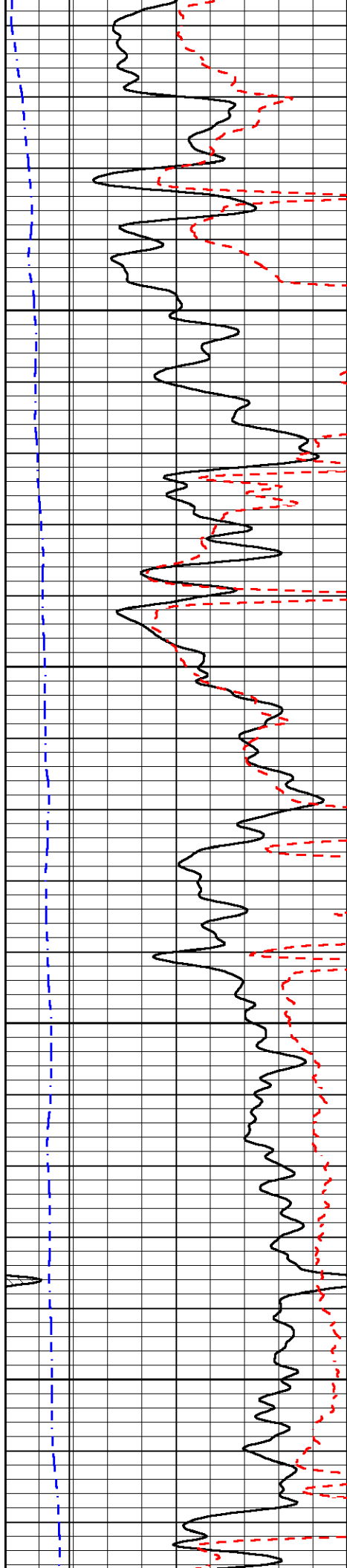
## MAIN PASS

Database File val\_johnson\_2\_25\_owwo\_swd.db  
 Dataset Pathname stackml/pass4.1  
 Presentation Format \_micro  
 Dataset Creation Wed Nov 03 14:35:24 2021  
 Charted by Depth in Feet scaled 1:240

0	Gamma Ray (GAPI)	150
6	Caliper (in)	16
-200	SP (mV)	0

0	Micro Inverse 1 X 1 (Ohm-m)	40
0	Micro Normal 2" (Ohm-m)	40
10000	Line Weight (lb)	0



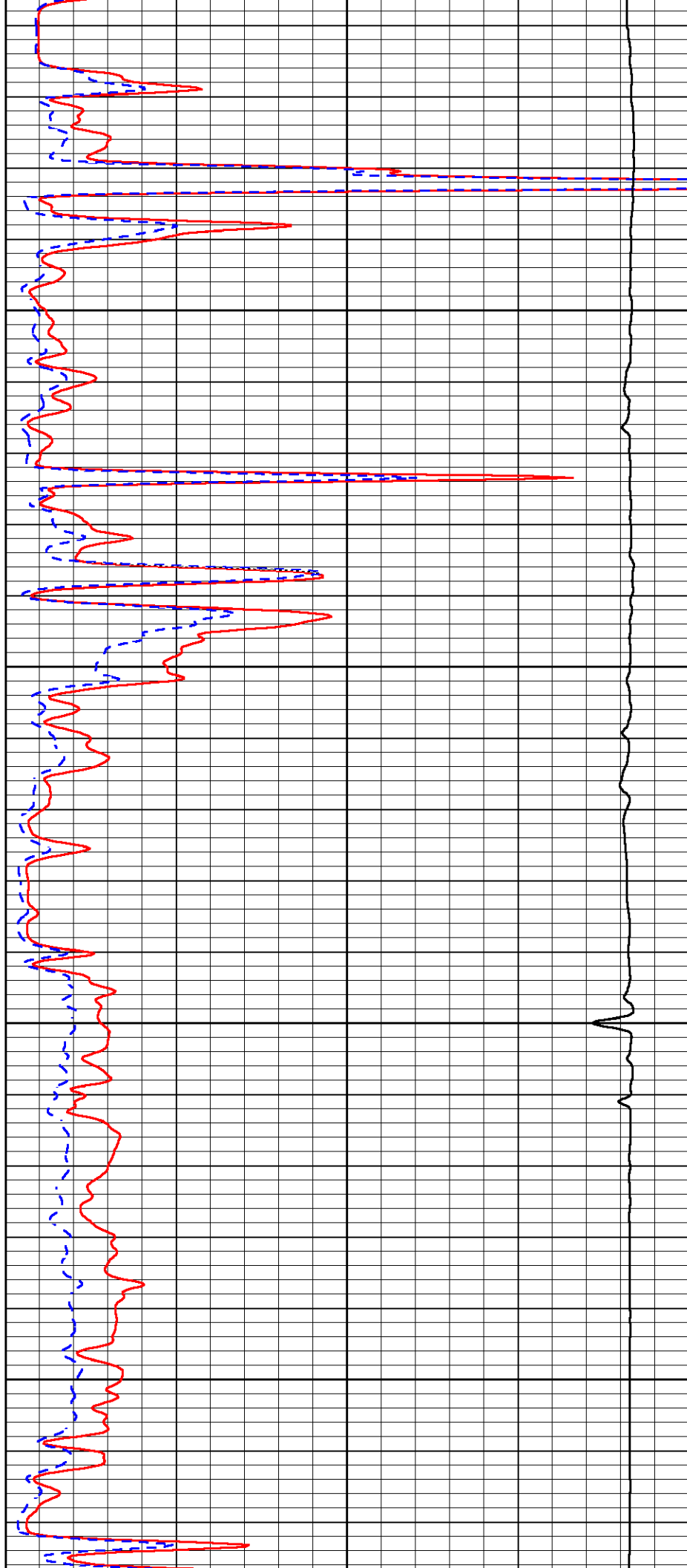


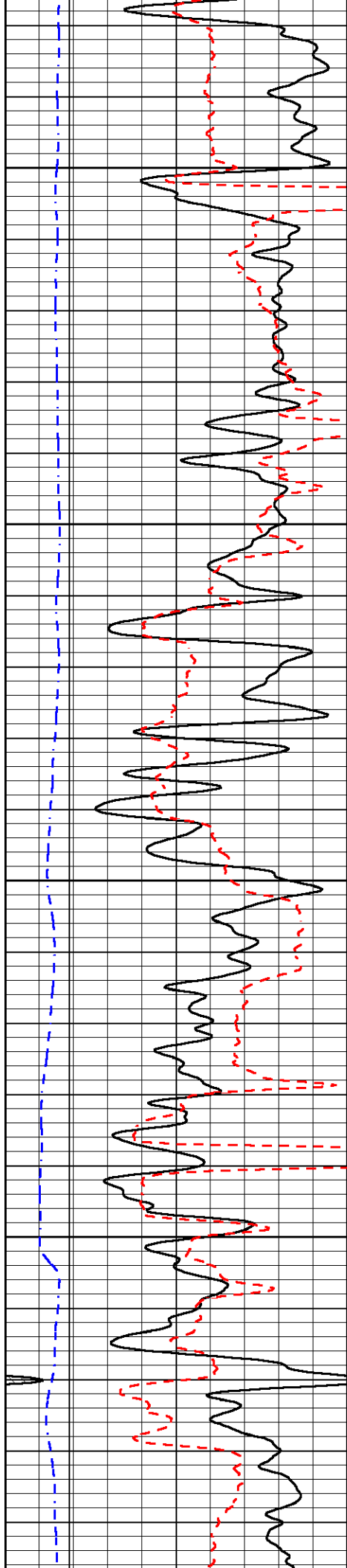
250

300

350

400



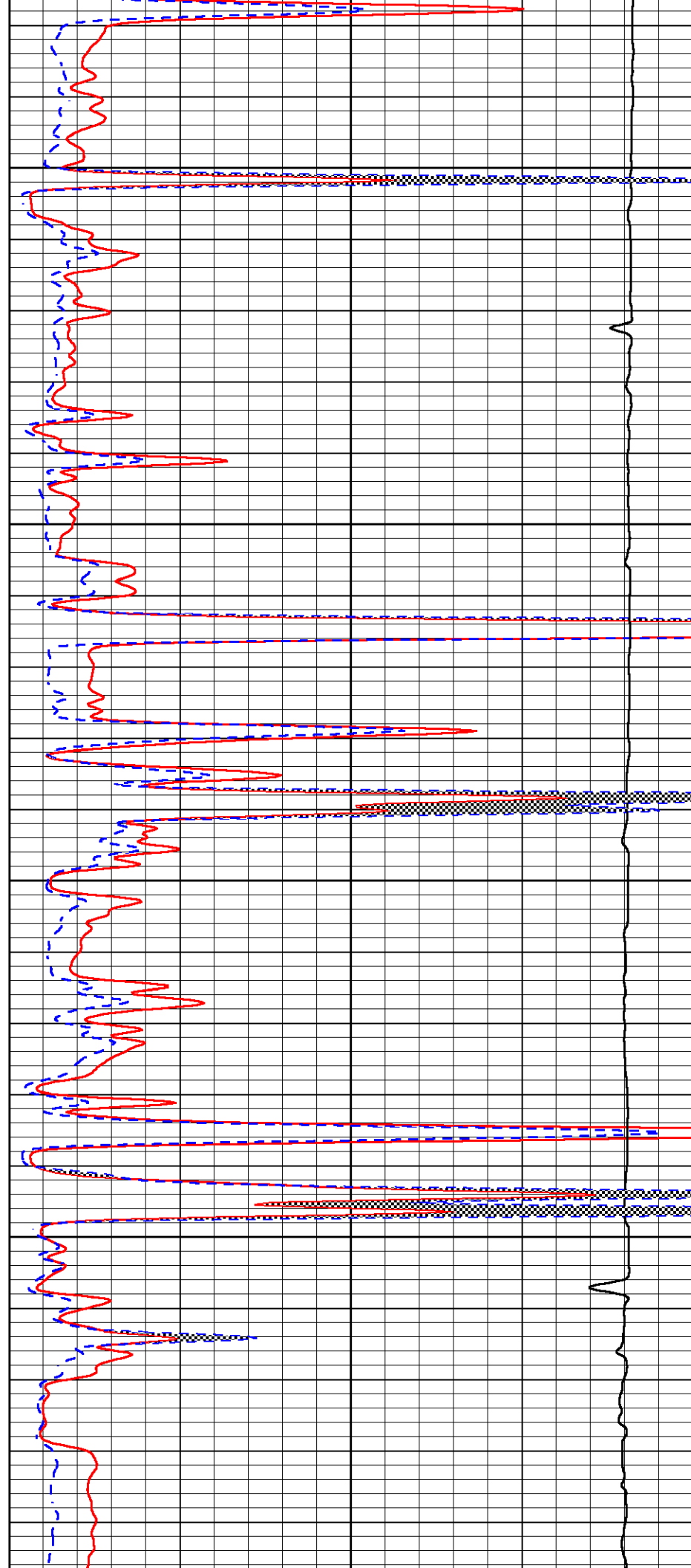


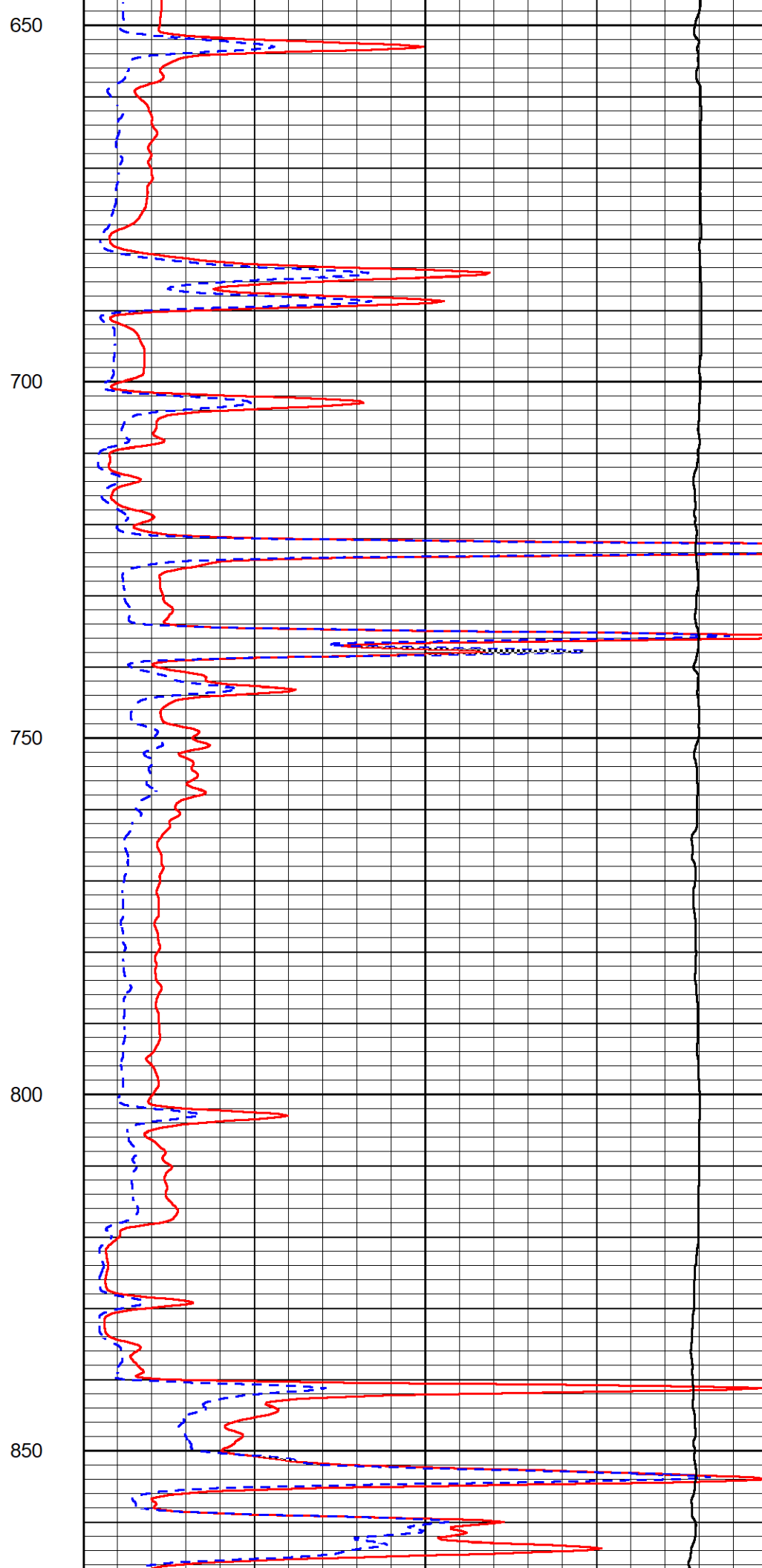
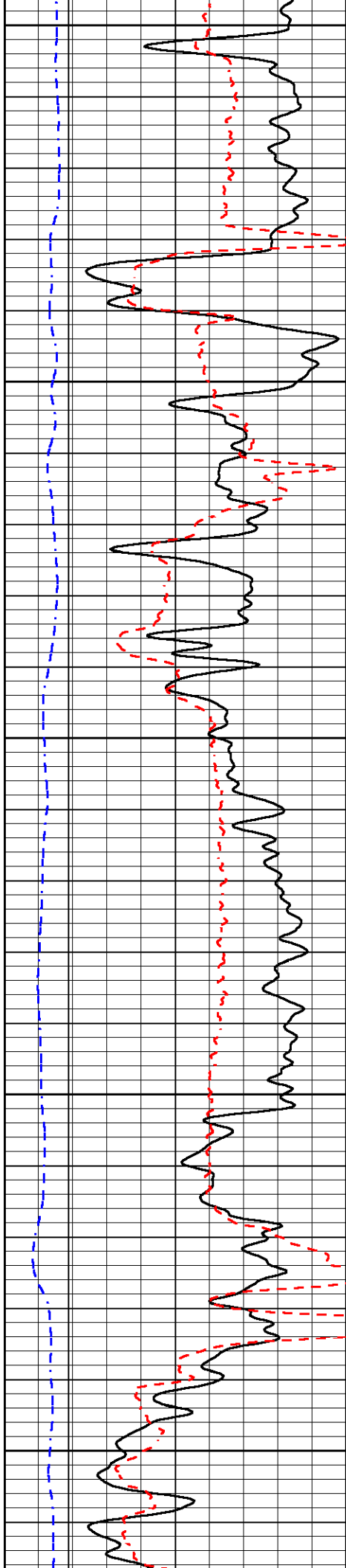
450

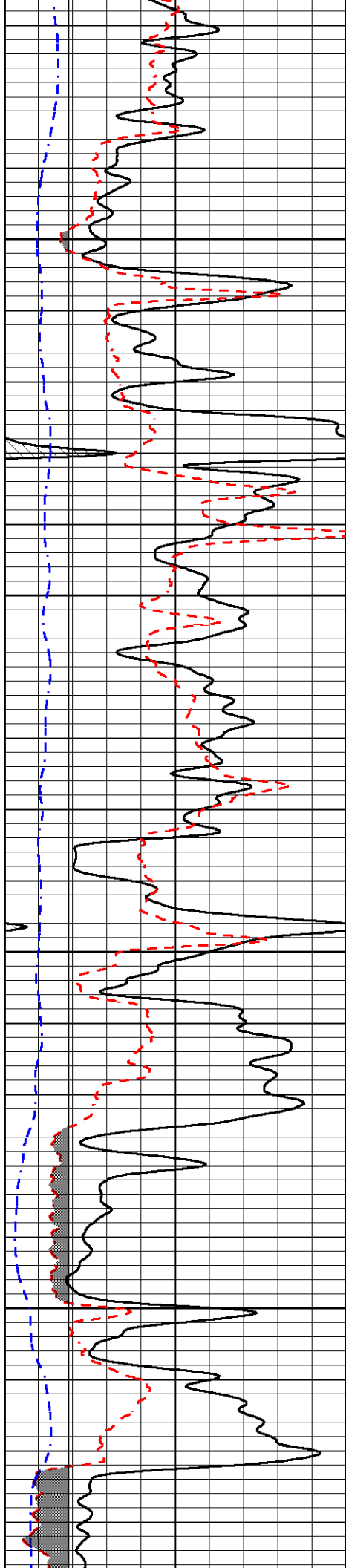
500

550

600





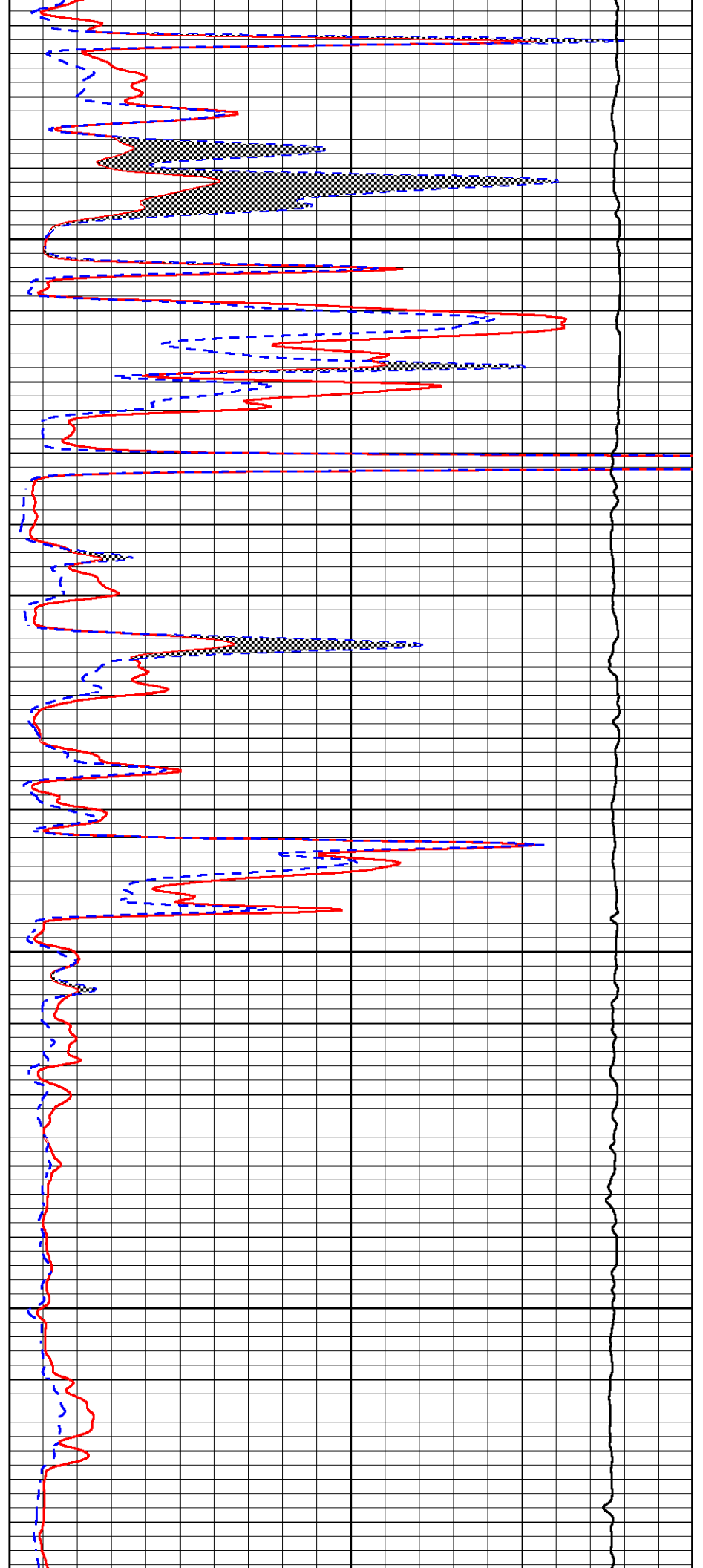


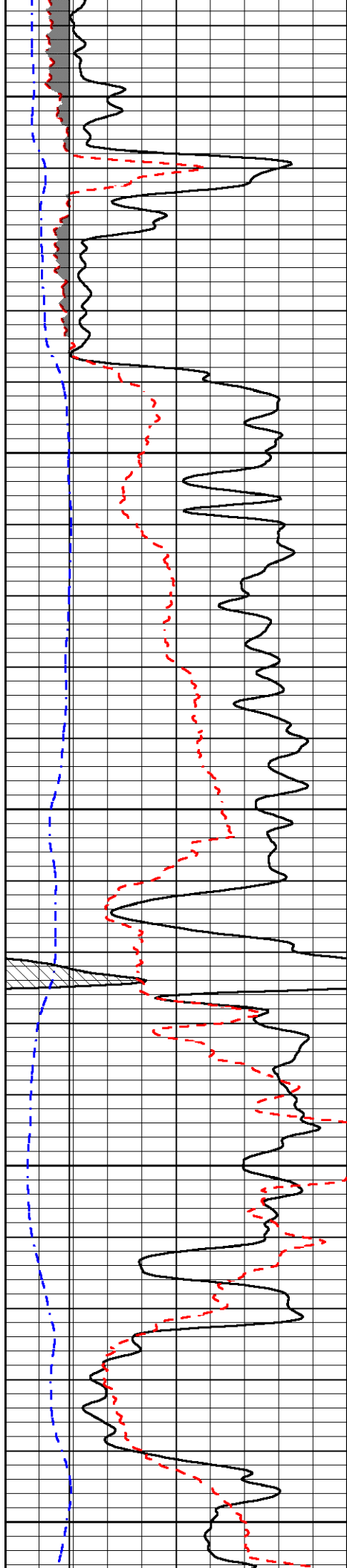
900

950

1000

1050





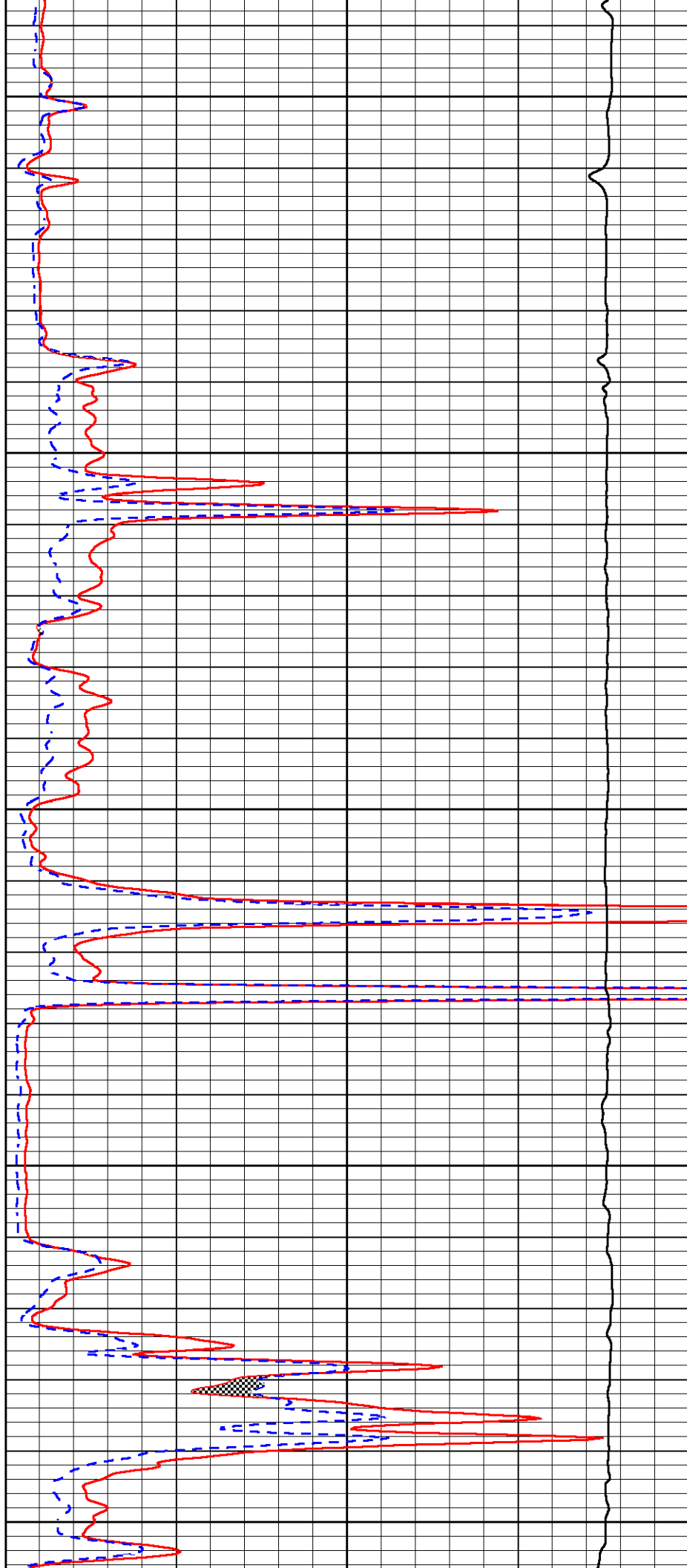
1100

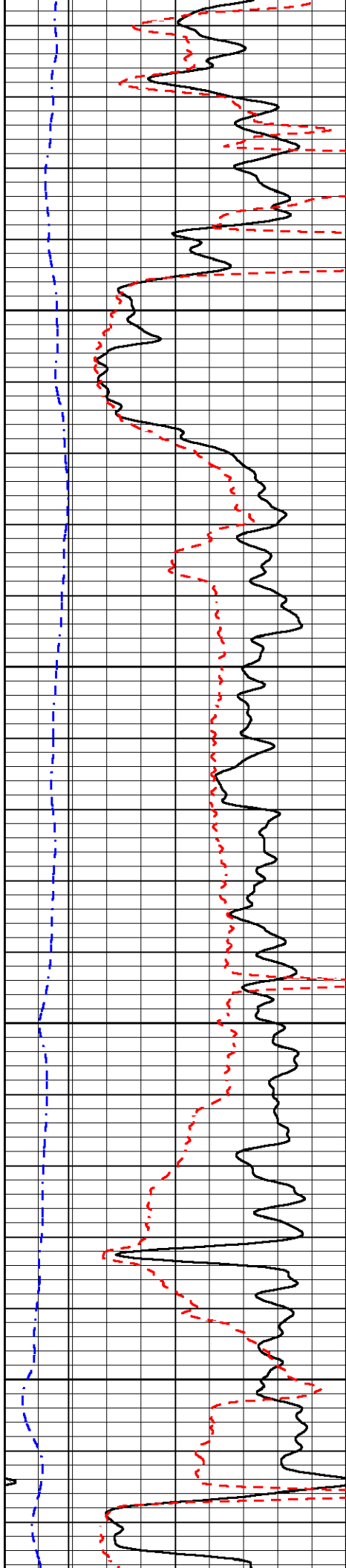
1150

1200

1250

1300



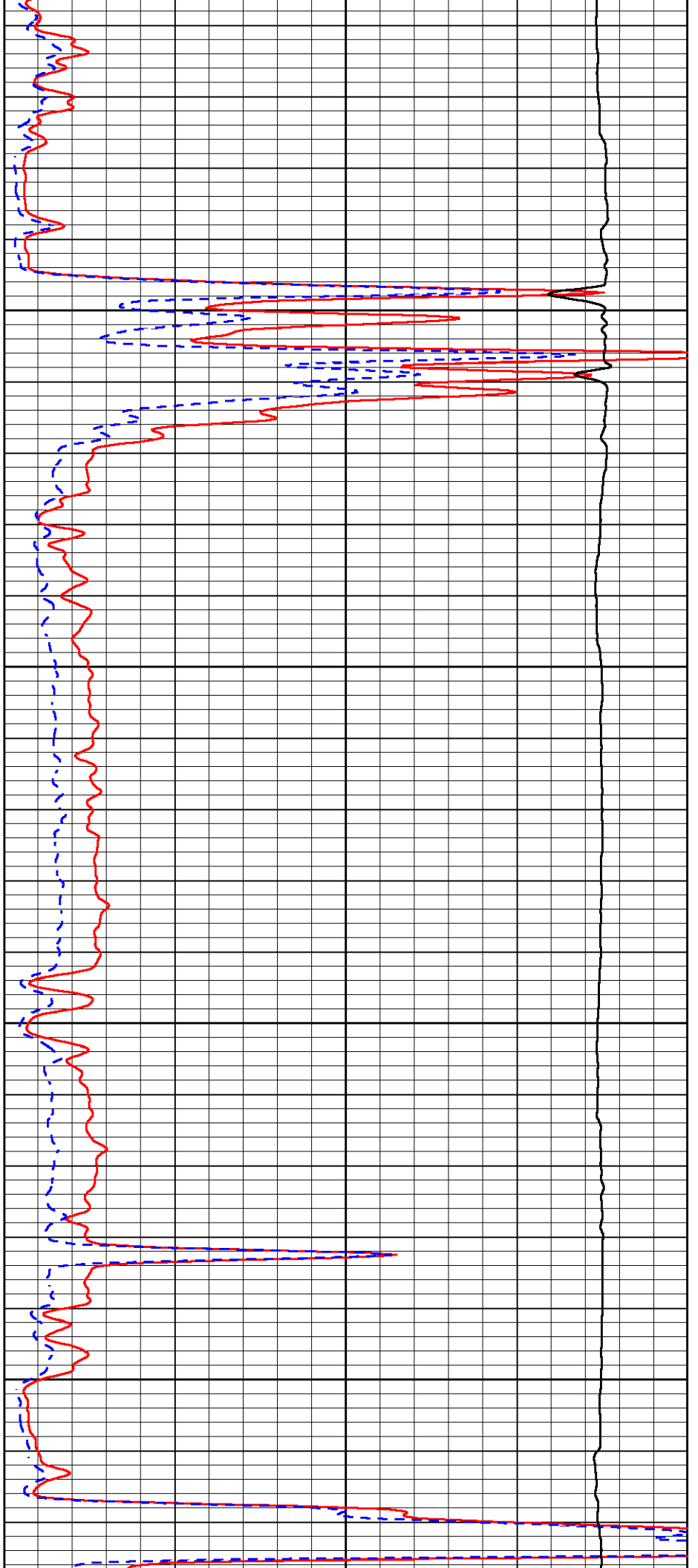


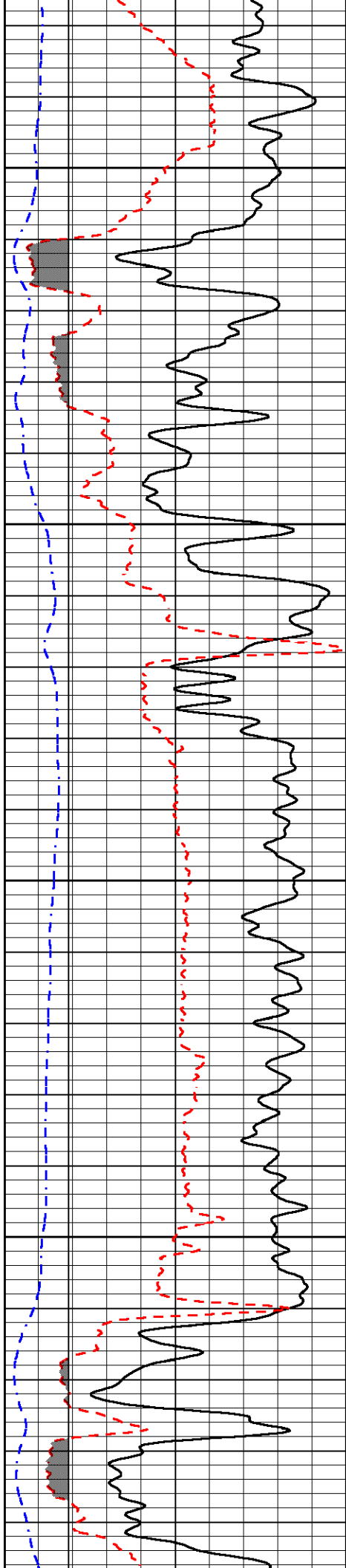
1350

1400

1450

1500



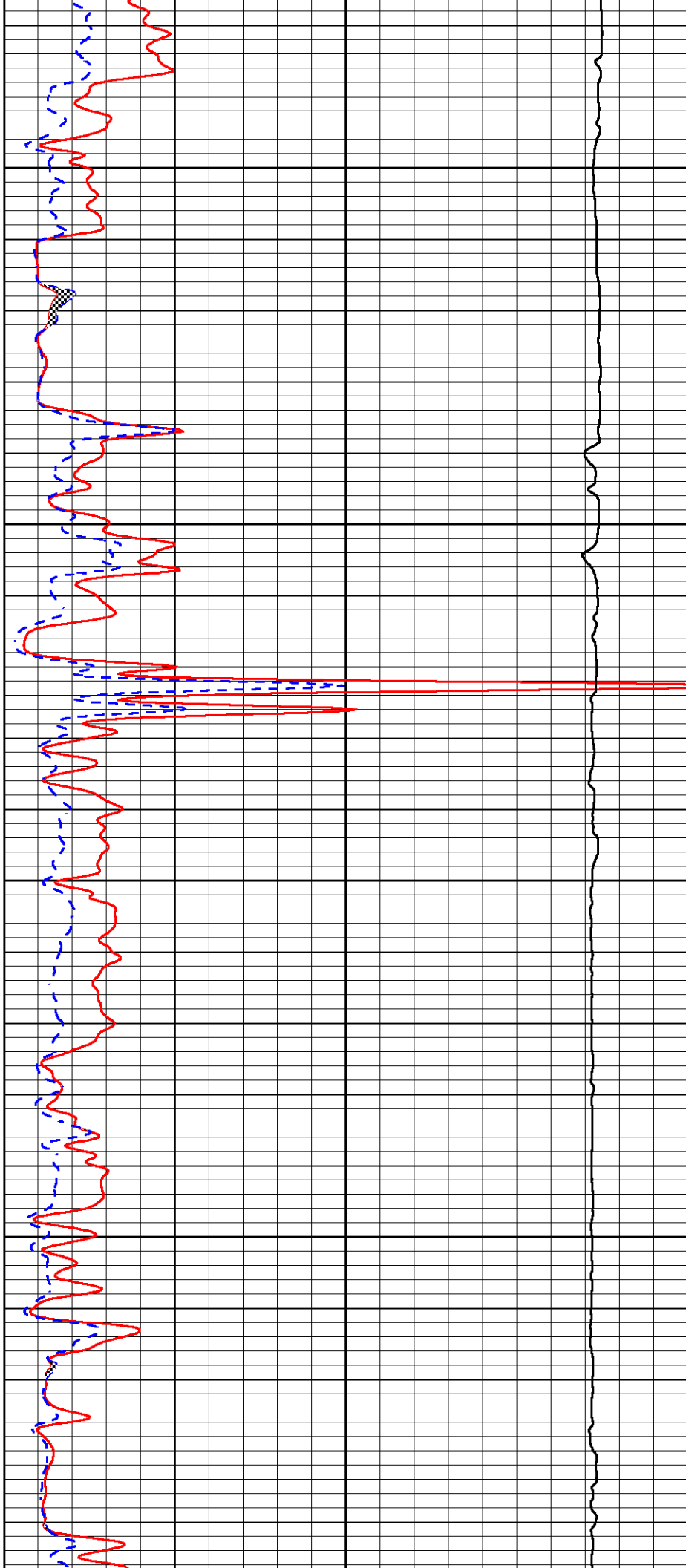


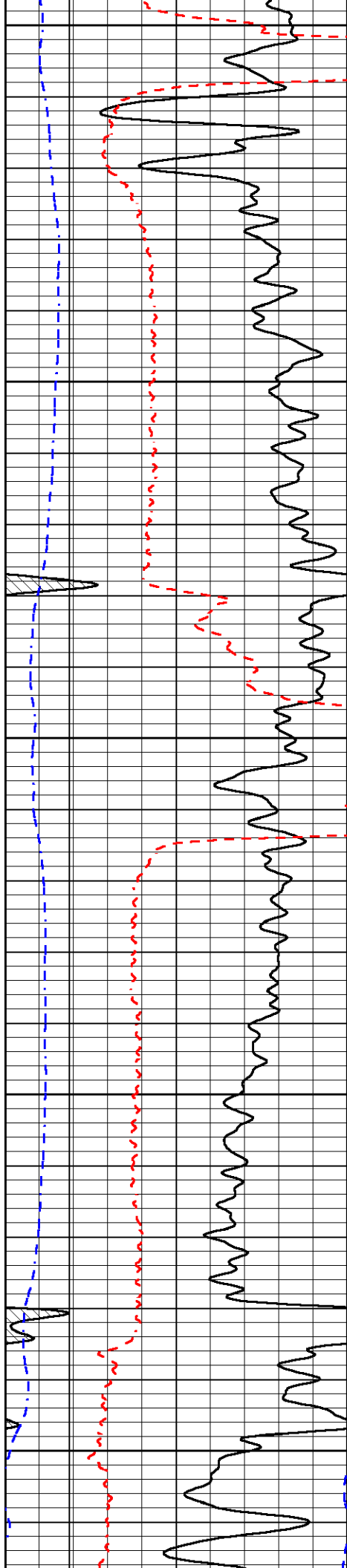
1550

1600

1650

1700





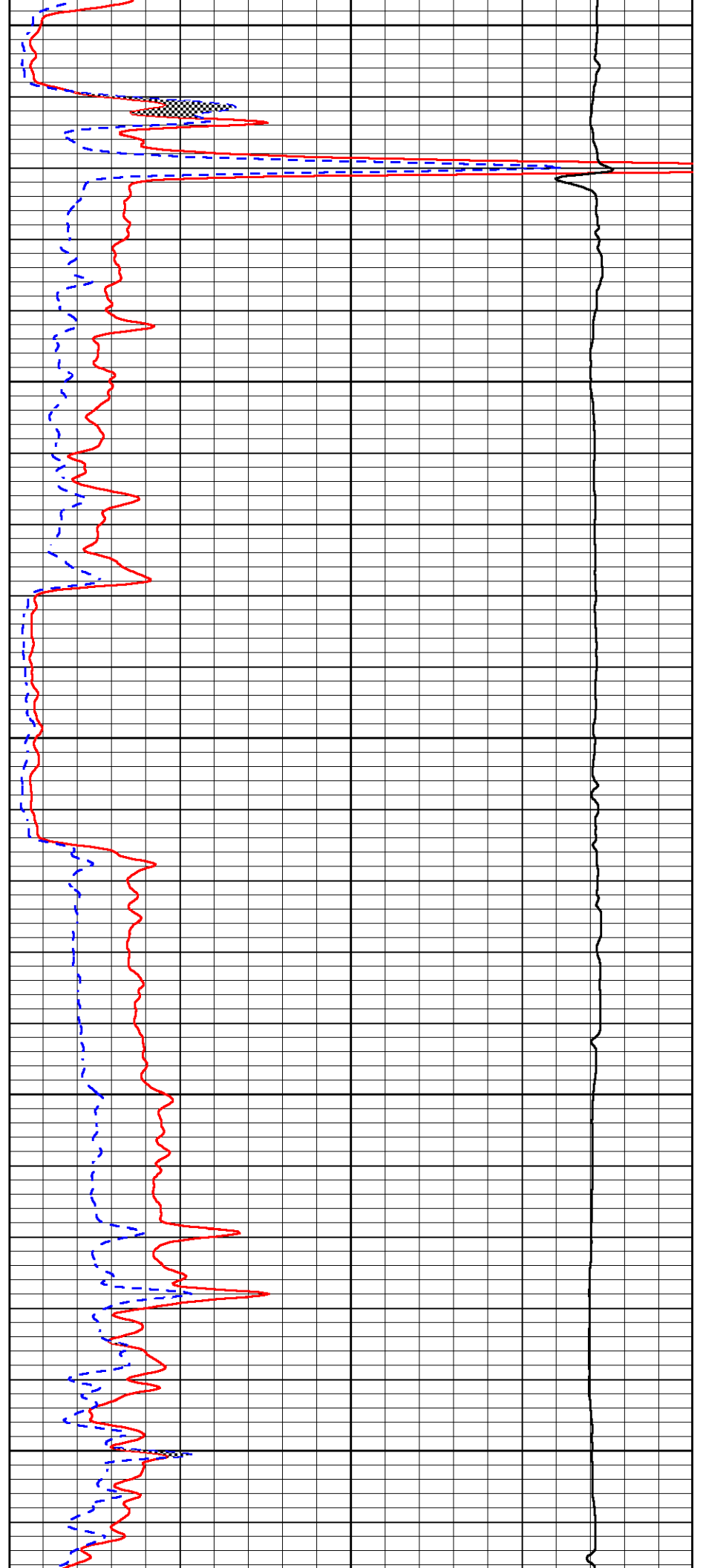
1750

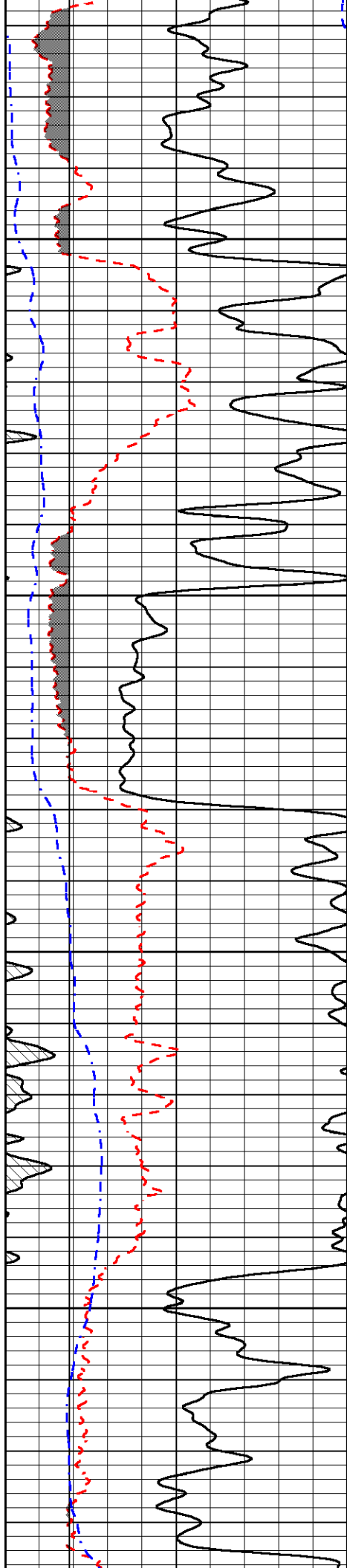
1800

1850

1900

1950



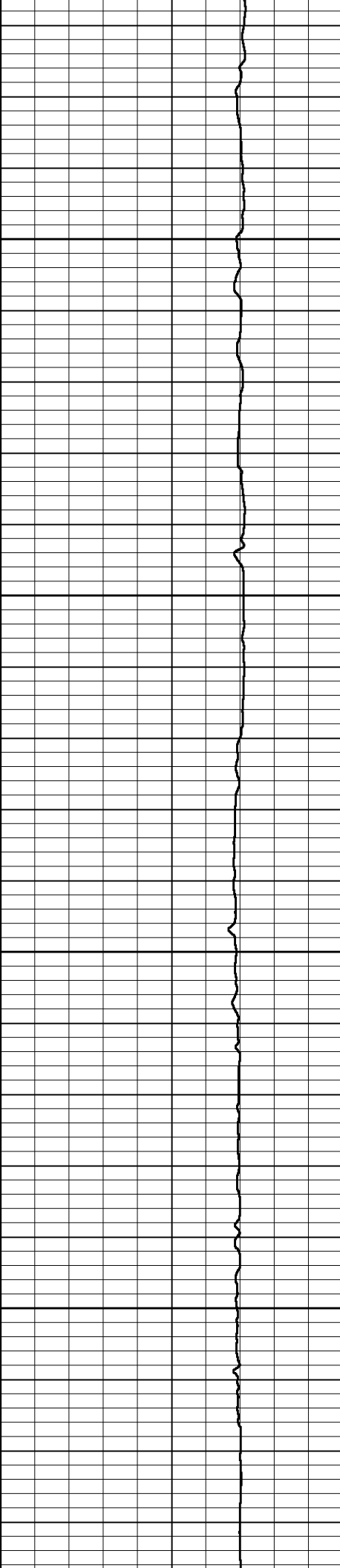
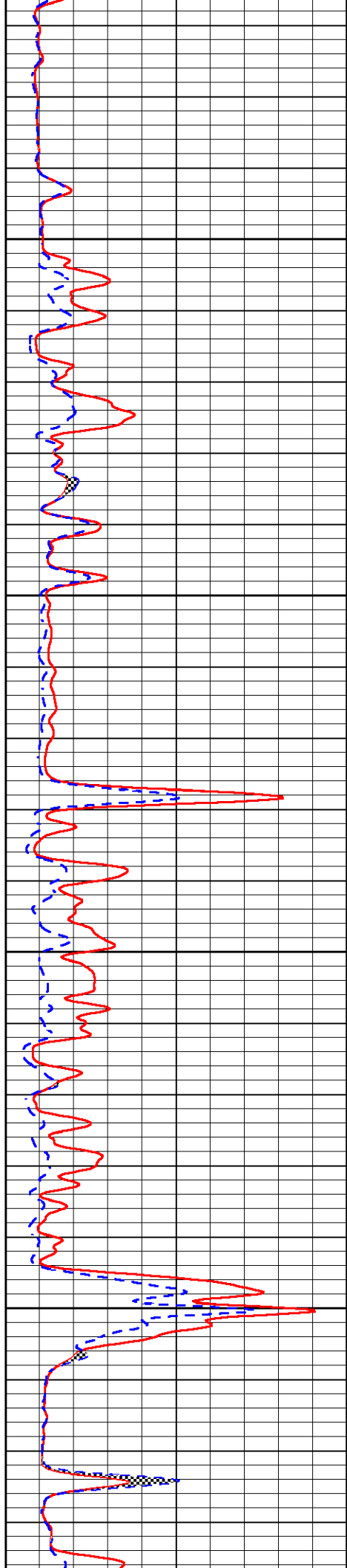


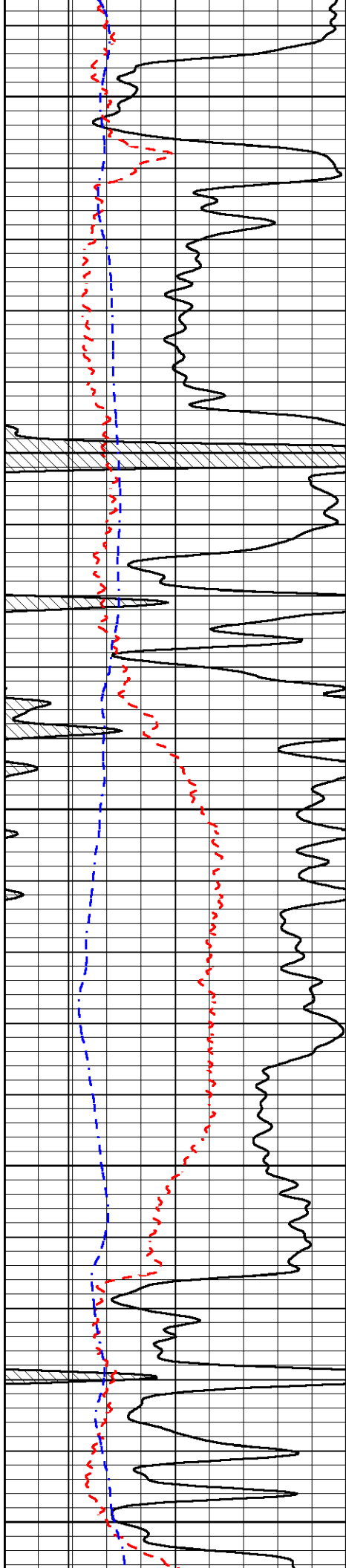
2000

2050

2100

2150





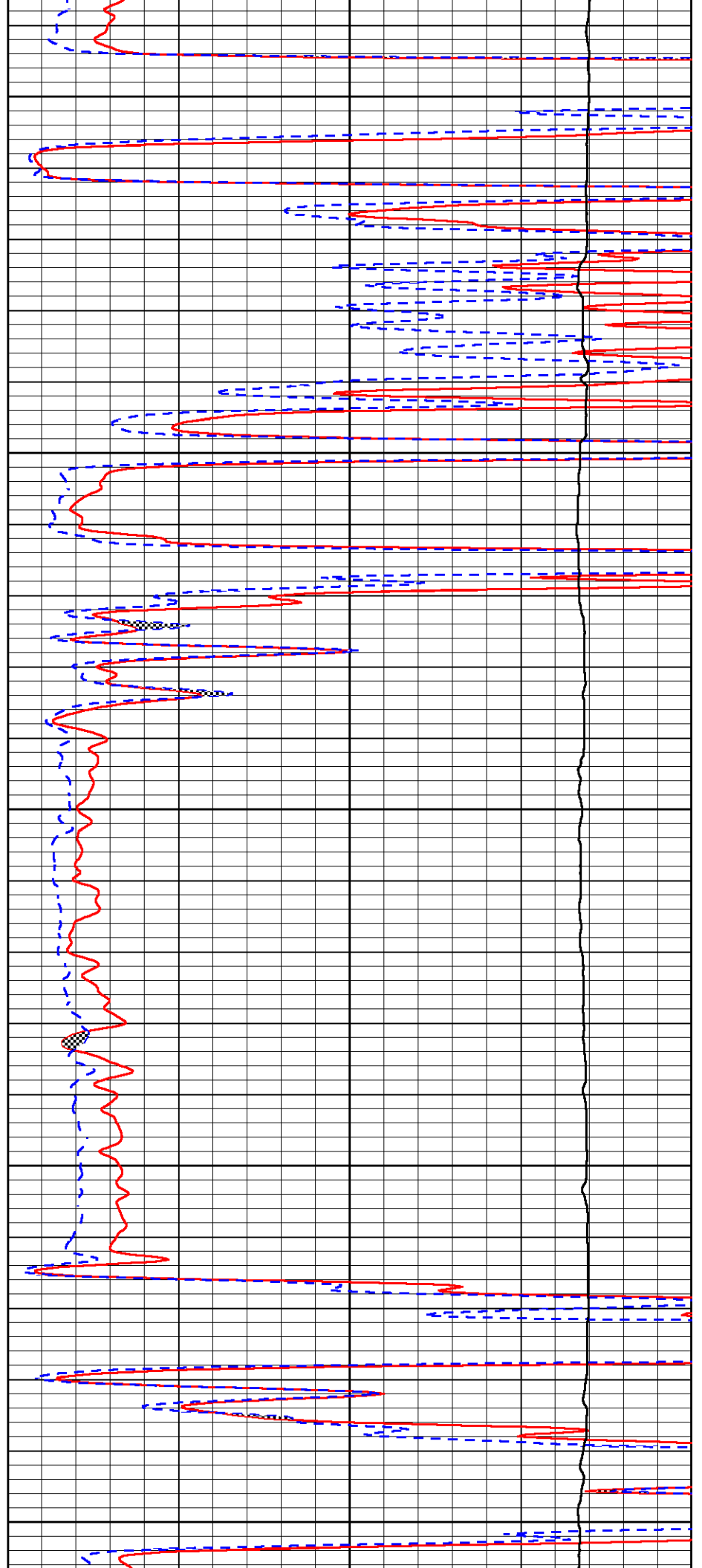
2200

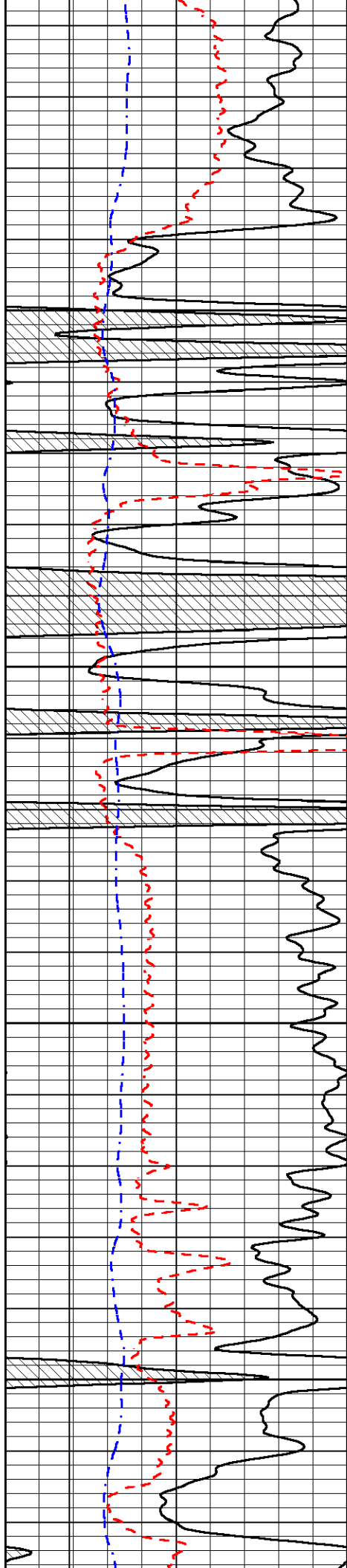
2250

2300

2350

2400



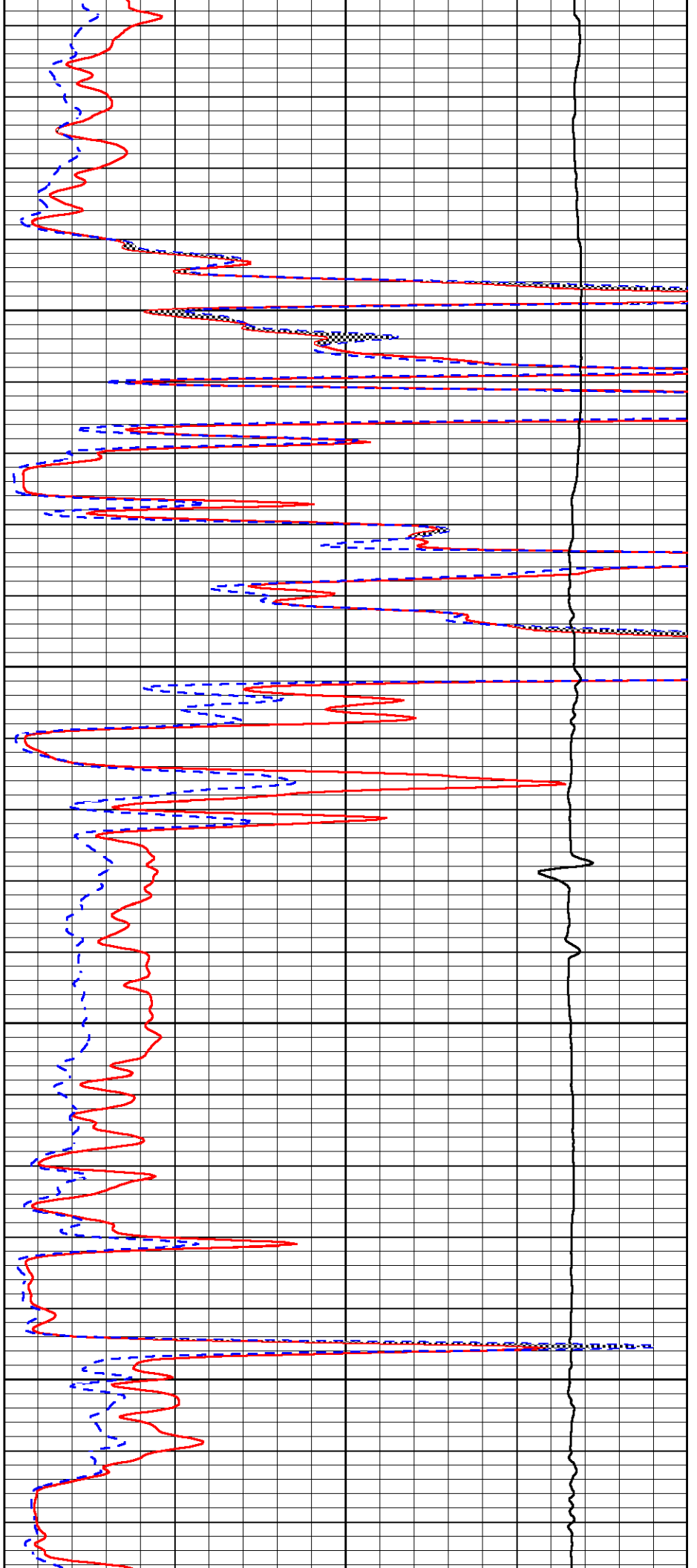


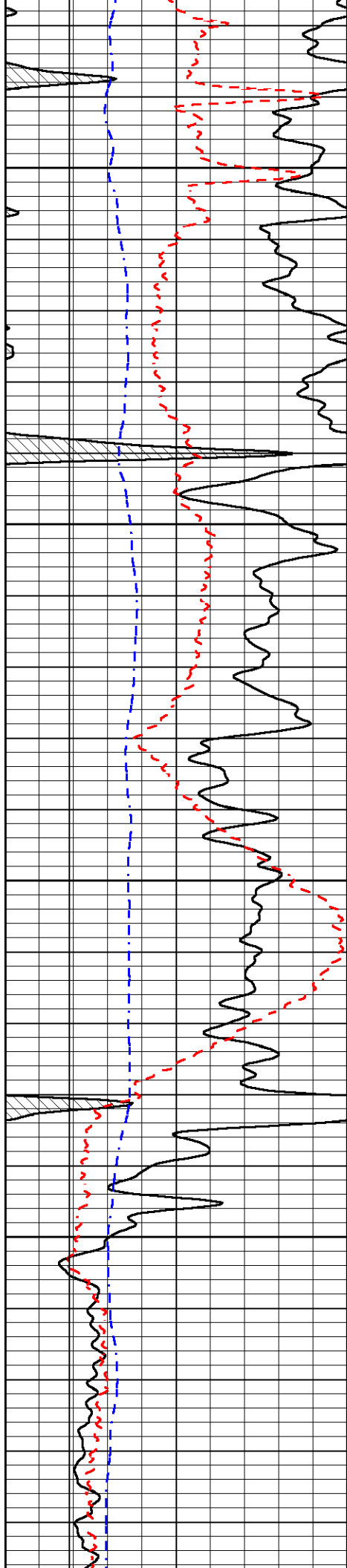
2450

2500

2550

2600



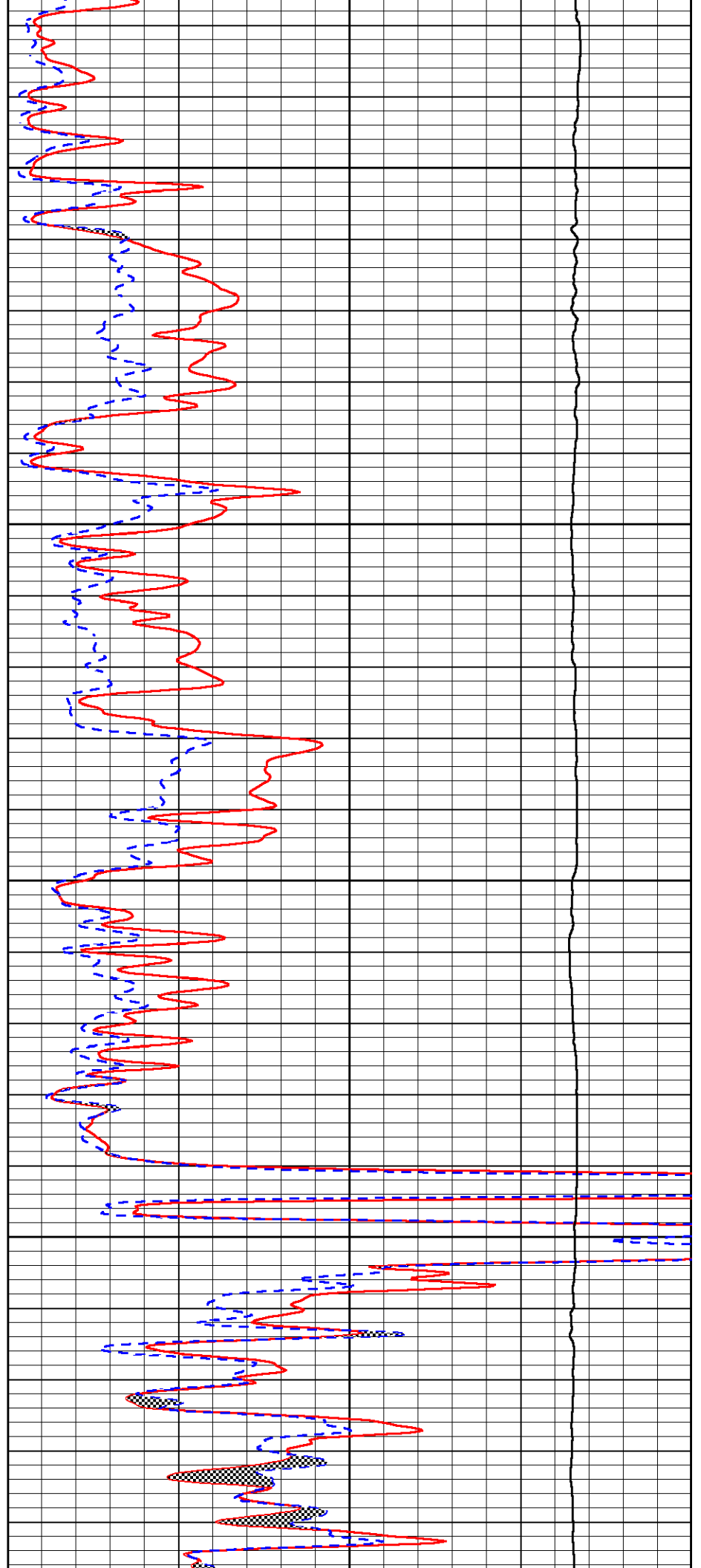


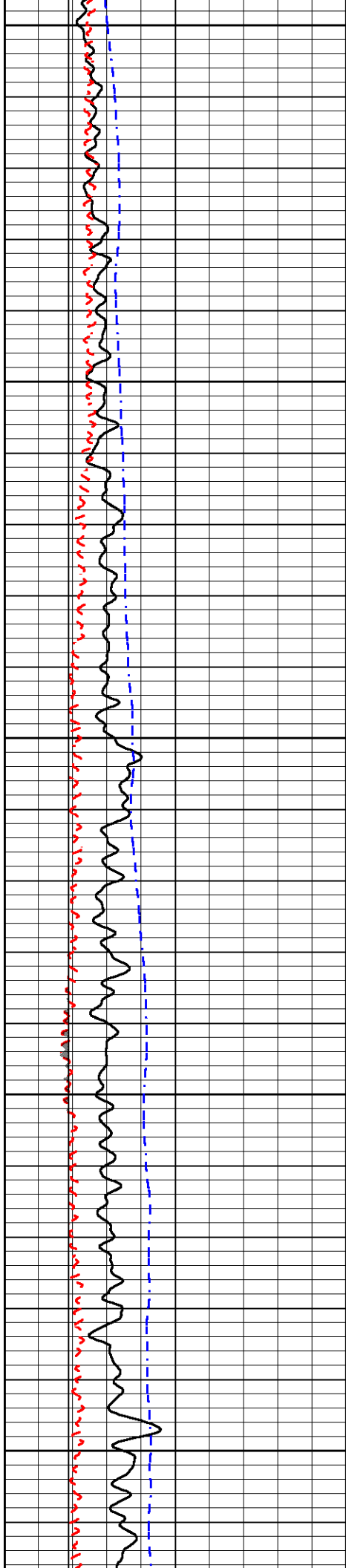
2650

2700

2750

2800





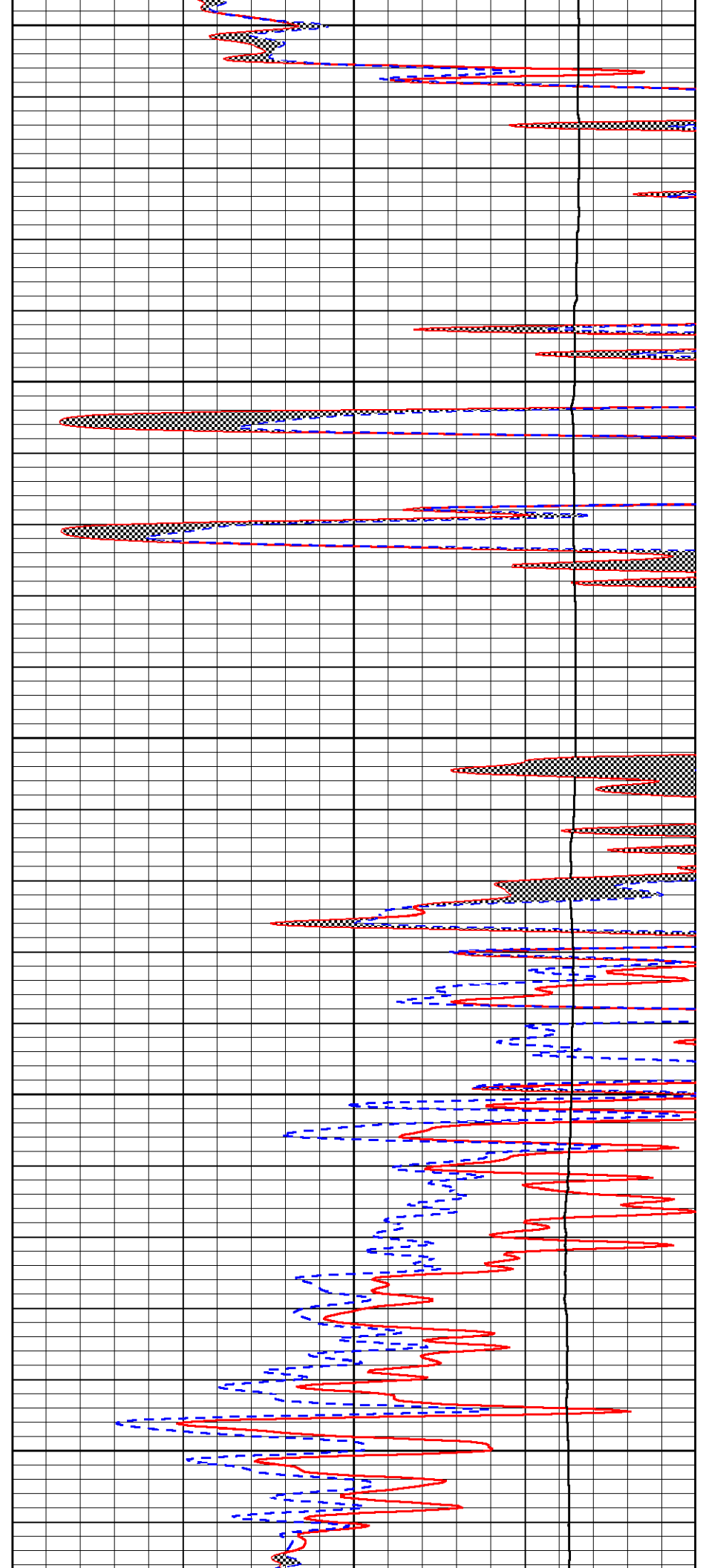
2850

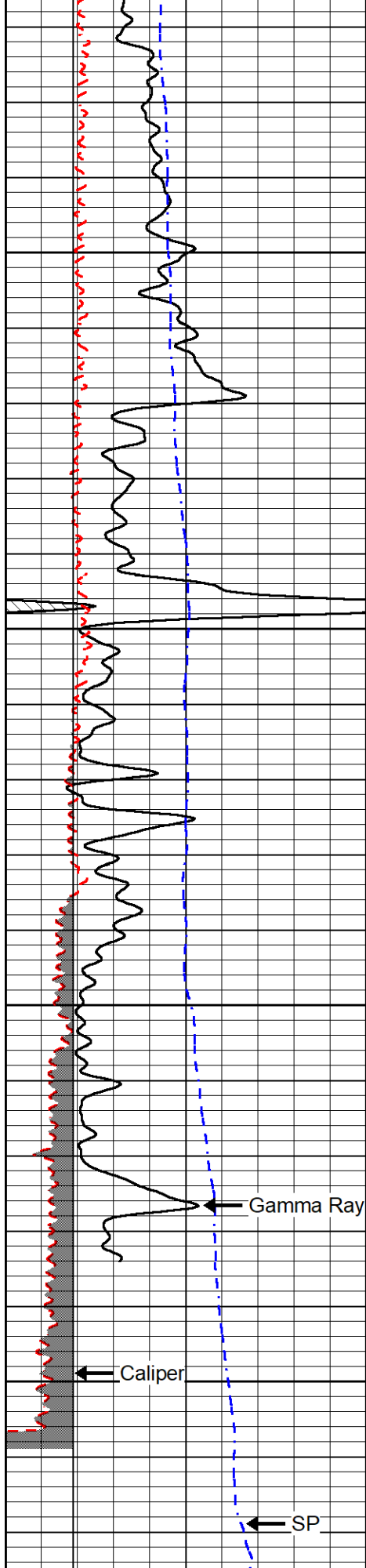
2900

2950

3000

3050





0 Gamma Ray (GAPI) 150

6 Caliper (in) 16

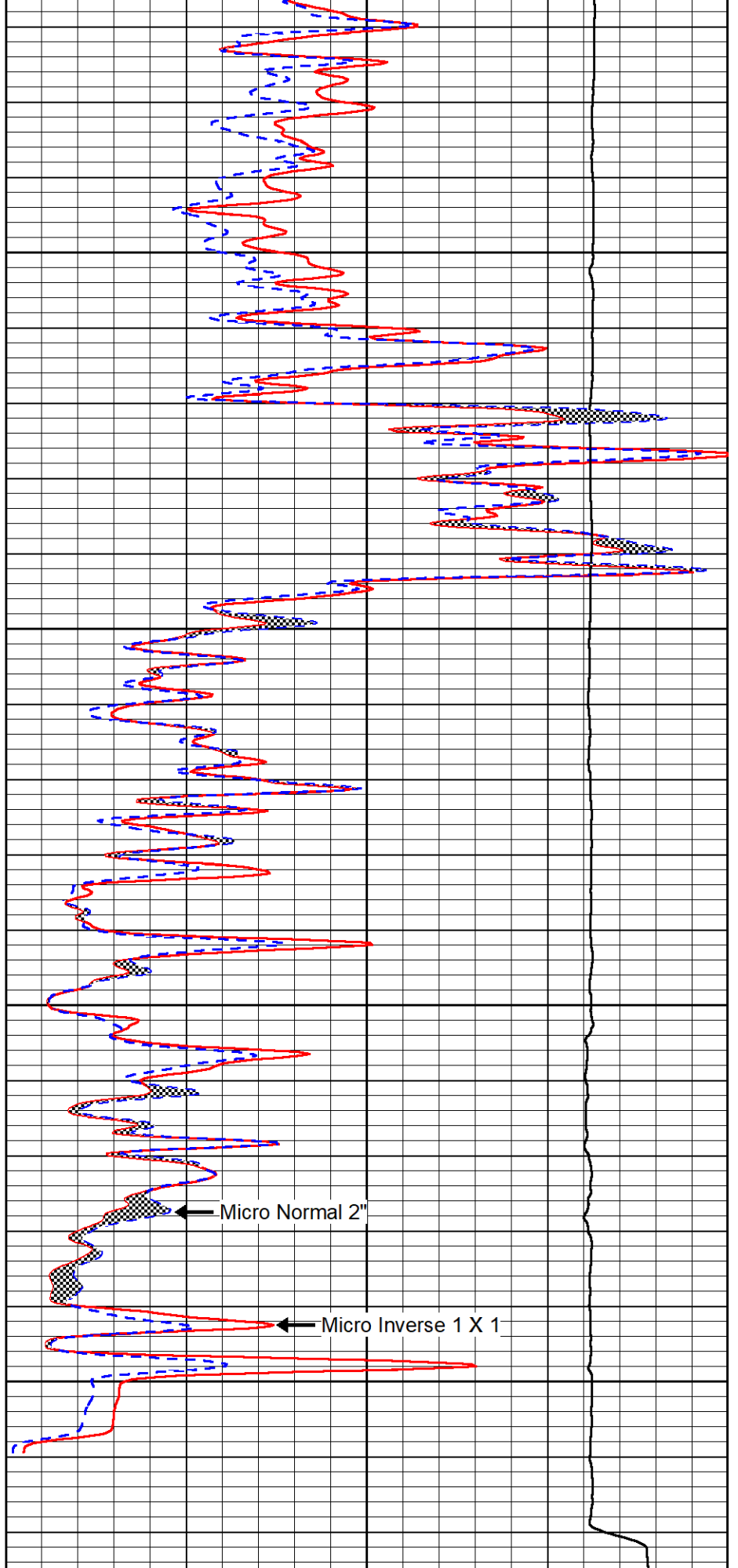
0 SP (mV) 0

3100

3150

3200

3250



0 Micro Inverse 1 X 1 (Ohm-m) 40

0 Micro Normal 2" (Ohm-m) 40

0 Micro Normal 1" (Ohm-m) 40

200	SP (mV)	10000	Line Weight (lb)	0
-----	---------	-------	------------------	---