



MIDWEST WIRELINE

# DUAL COMP POROSITY LOG

Company Val Energy, Inc.  
 Well Johnson #2-25 OWWO SWD  
 Field Dexter  
 County Cowley  
 State Kansas

Company Val Energy, Inc.  
 Well Johnson #2-25 OWWO SWD  
 Field Dexter  
 County Cowley  
 State Kansas

Location: 1650 FSL & 2310 FEL  
 SEC 25 TWP 33S RGE 6E  
 Permanent Datum Ground Level Elevation 1208  
 Log Measured From Kelly Bushing  
 Drilling Measured From Kelly Bushing  
 Other Services  
 DIL  
 MEL  
 Elevation  
 K.B. 1217  
 D.F.  
 G.L. 1208

Date	11/3/2021						
Run Number	One						
Type Log	CNL/CDL						
Depth Driller	3275						
Depth Logger	3269						
Bottom Logged Interval	3240						
Top Logged Interval	800						
Type Fluid In Hole	Chemical						
Salinity, PPM CL	15000						
Density	8.6						
Level	Full						
Max. Rec. Temp. F	109						
Operating Rig Time	2 Hours						
Equipment -- Location	P-108 HAYS						
Recorded By	J. Henrickson						
Witnessed By	Brandon Wolfe						
Borehole Record							
Run No.	Bit	From	To	Size	Wgt.	From	To
One	12.25	0	111	8.625	24	0	111
Two	7.875	111					
Casing Record							

<<< Fold Here >>>

All interpretations are opinions based on inferences from electrical or other measurements and Midwest Wireline LLC cannot and does not guarantee the accuracy or correctness of any interpretation, and Midwest Wireline LLC will not be liable or responsible for any loss, costs, damages, or expenses incurred or sustained by anyone resulting from any interpretation made by any of our officers, agents or employees.

Comments

N/A DENOTES NOT AVAILABLE OR NON-APPLICABLE.

Dexter Kansas  
 South to 231, East/South Into

No Repeat Due to Hole Conditions

Log Measured From: Kelly Bushing 9 Ft. Above Permanent Datum

THANK YOU FOR USING MIDWEST WIRELINE LLC  
 785-625-3858

Your Midwest Wireline Crew

Engineer: J. Henrickson  
 Operator:  
 Operator:  
 Operator:

This Log Record Was Witnessed By

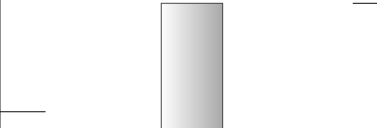
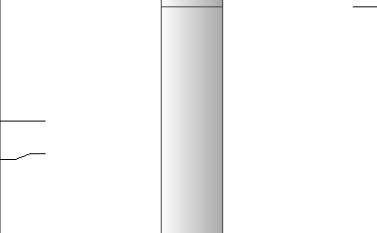
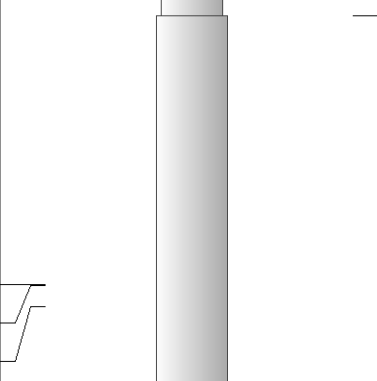
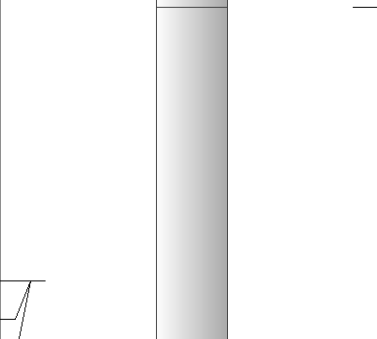
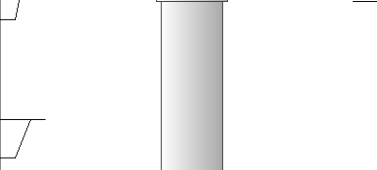
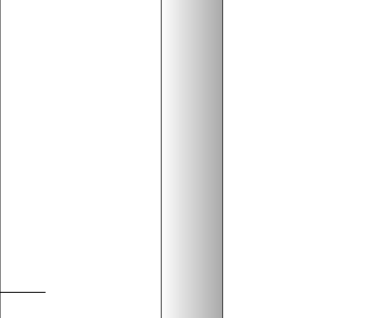
Primary Witness: Brandon Wolfe  
 Secondary Witness:  
 Secondary Witness:  
 Secondary Witness:

# Log Variables

DatabaseC:\ProgramData\Warrior\Data\val\_johnson\_2\_25\_owwo\_swd.db  
 Dataset field/well/stackml/pass3.1/\_vars\_

## Top - Bottom

A	BOREID in	BOTTEMP degF	CASEOD in	CASETHCK in	FLUIDDEN g/cc	M	MATRXDEN g/cc
1	7.875	109	5.5	0	1	2	2.71
NPORSEL	PERFS	SNDERR mmho/m	SNDERRM mmho/m	SPSHIFT mV	SRFTEMP degF	SZCOR	TDEPTH ft
Limestone	0	0	0	-180	64	Off	3269

Sensor	Offset (ft)	Schematic	Description	Length (ft)	O.D. (in)	Weight (lb)
GR	40.58		GR-M&W (89-M&W)	3.00	3.50	50.00
CNLSC CNSSC	37.48 36.73		CNT-PSI (43)	5.50	3.50	100.00
LSD DCAL SSD	28.43 28.42 27.93		CDL-M&W (915-956)	8.50	4.00	250.00
MCAL MI MN	19.83 19.83 19.83		ML-PSI STKBL ML (PSI-02) Stackable Microlog Tools	7.58	4.00	65.00
RLL3F RLL3	15.80 15.80					
CILD	8.00		DIL-PSI HIGH TEMP (959-1032)	18.50	3.50	220.00

CILM 4.70

SP 0.20

Dataset: val\_johnson\_2\_25\_owwo\_swd.db: field/well/stackml/pass3.1  
 Total length: 43.08 ft  
 Total weight: 685.00 lb  
 O.D.: 4.00 in



MIDWEST WIRELINE

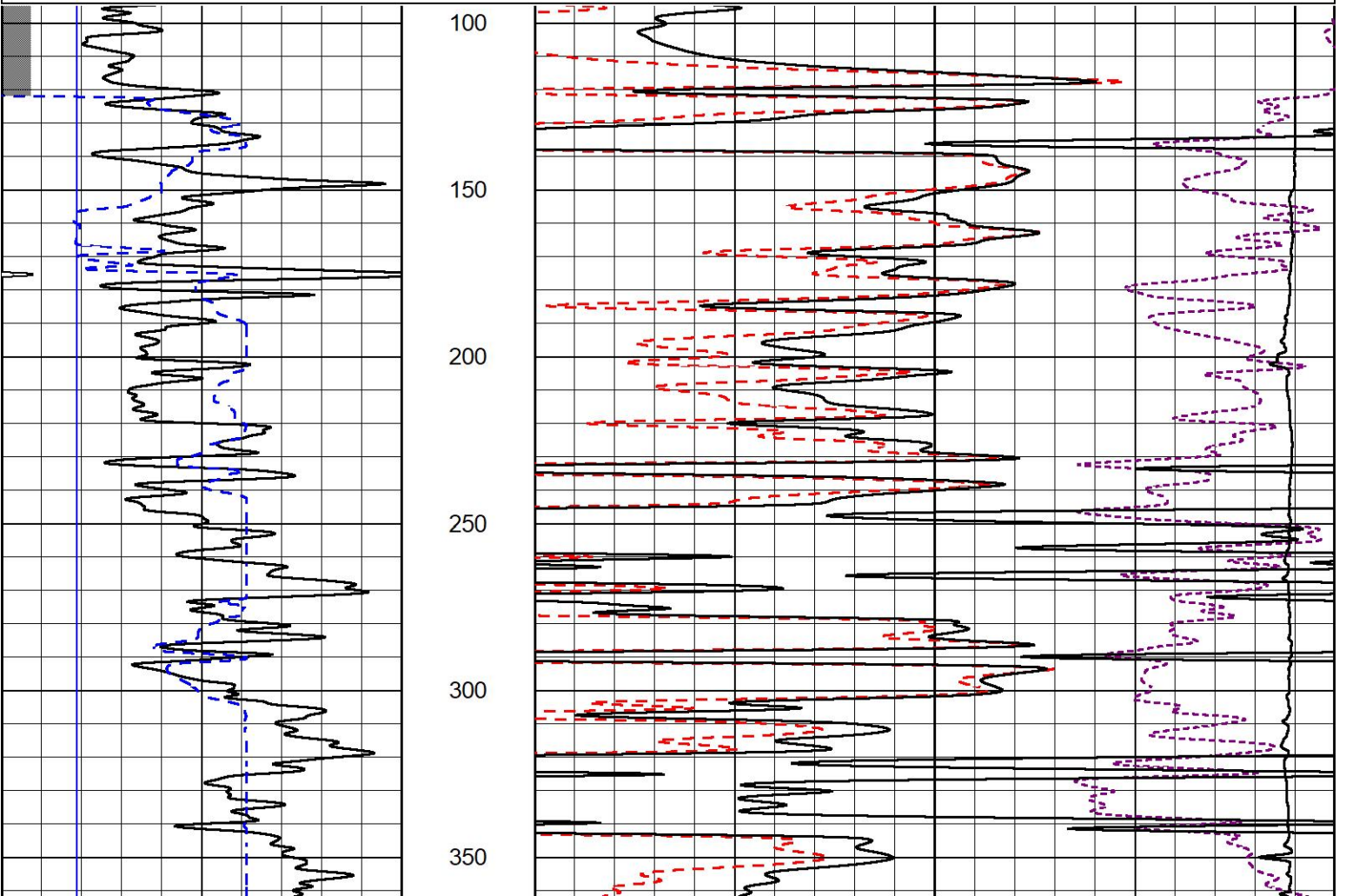
# 2" SCALE BULK DENSITY

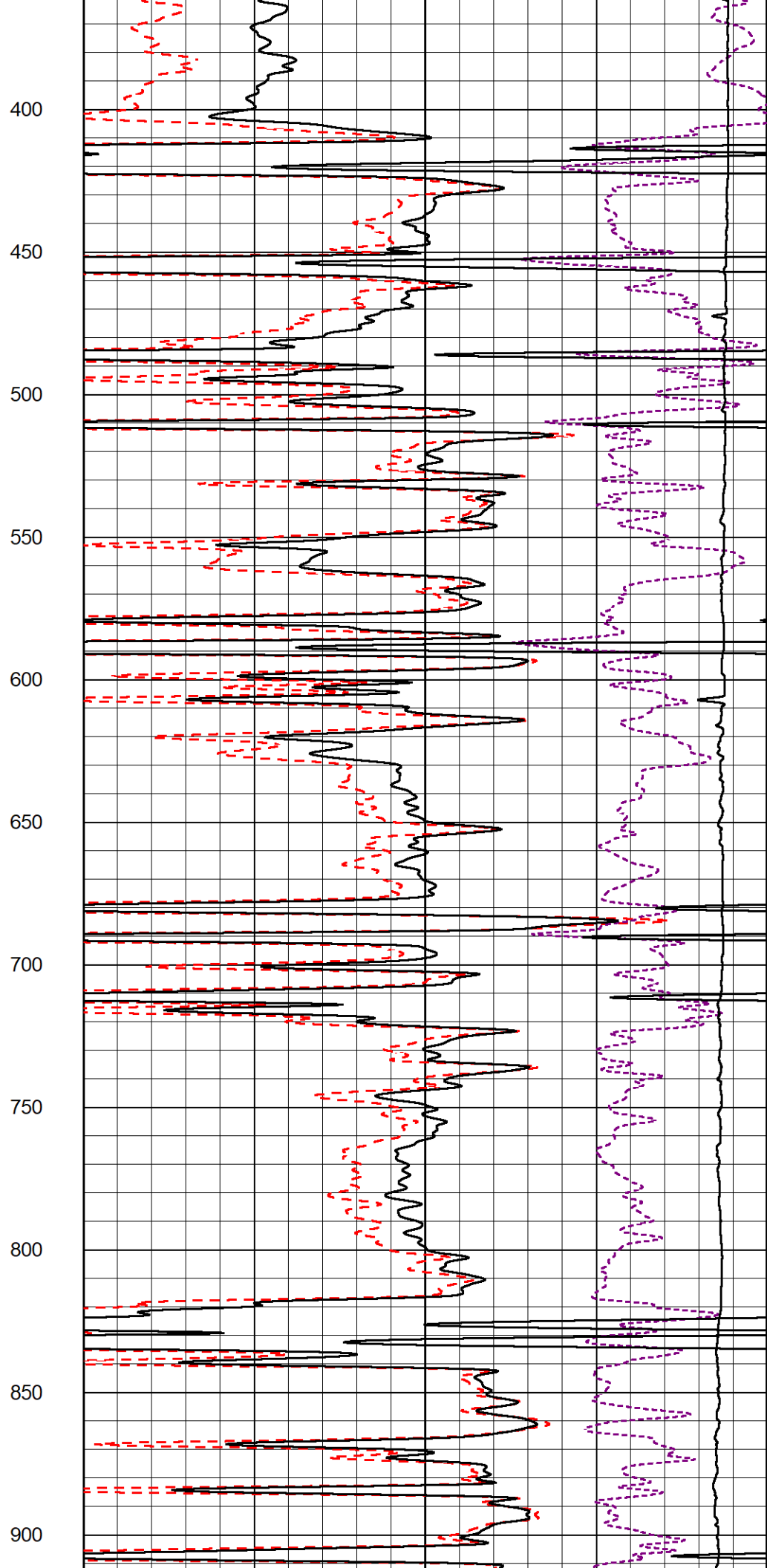
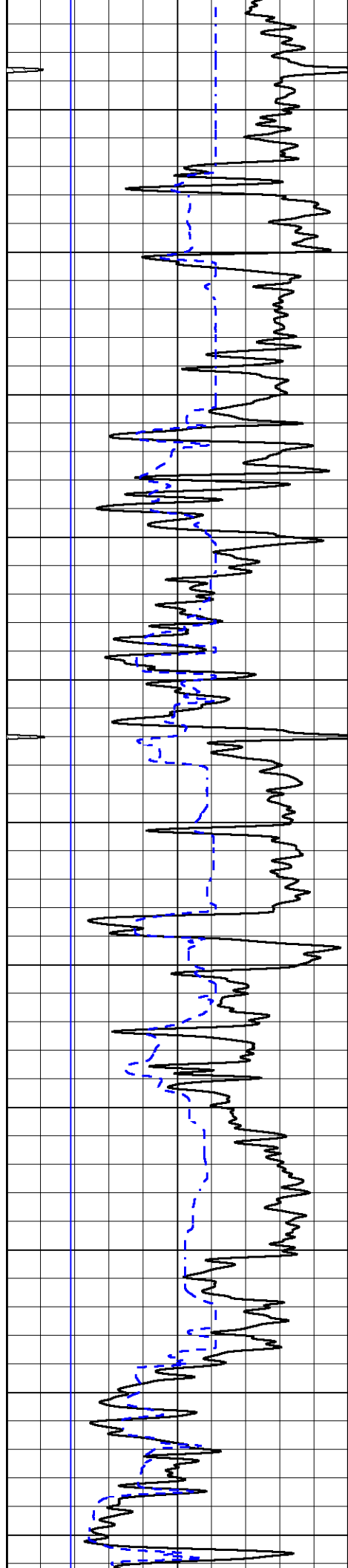
## MAIN PASS

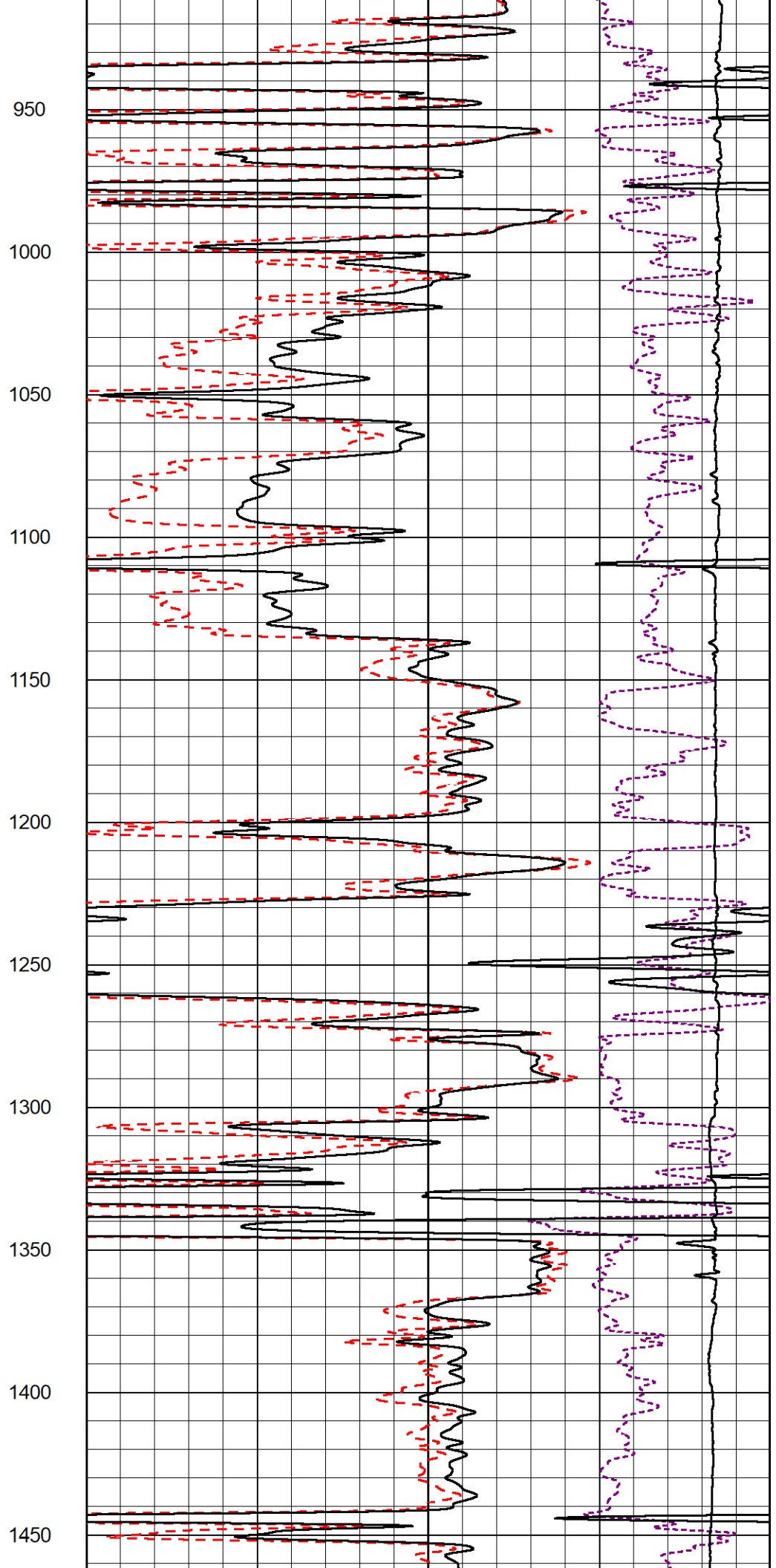
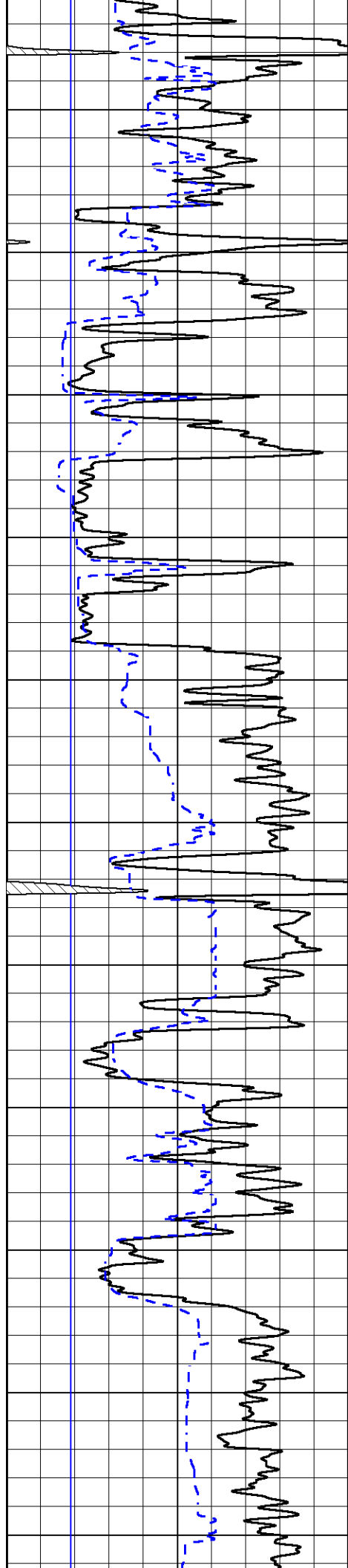
Database File val\_johnson\_2\_25\_owwo\_swd.db  
 Dataset Pathname stackml/pass3.1  
 Presentation Format \_cdl  
 Dataset Creation Wed Nov 03 14:35:08 2021  
 Charted by Depth in Feet scaled 1:600

0	Gamma Ray (GAPI)	150
6	Caliper (in)	16

30	Compensated Density (pu)	-10
2	Bulk Density (g/cc)	3
15000	Line Tension (lb)	0
-0.25	Correction (g/cc)	0.25







950

1000

1050

1100

1150

1200

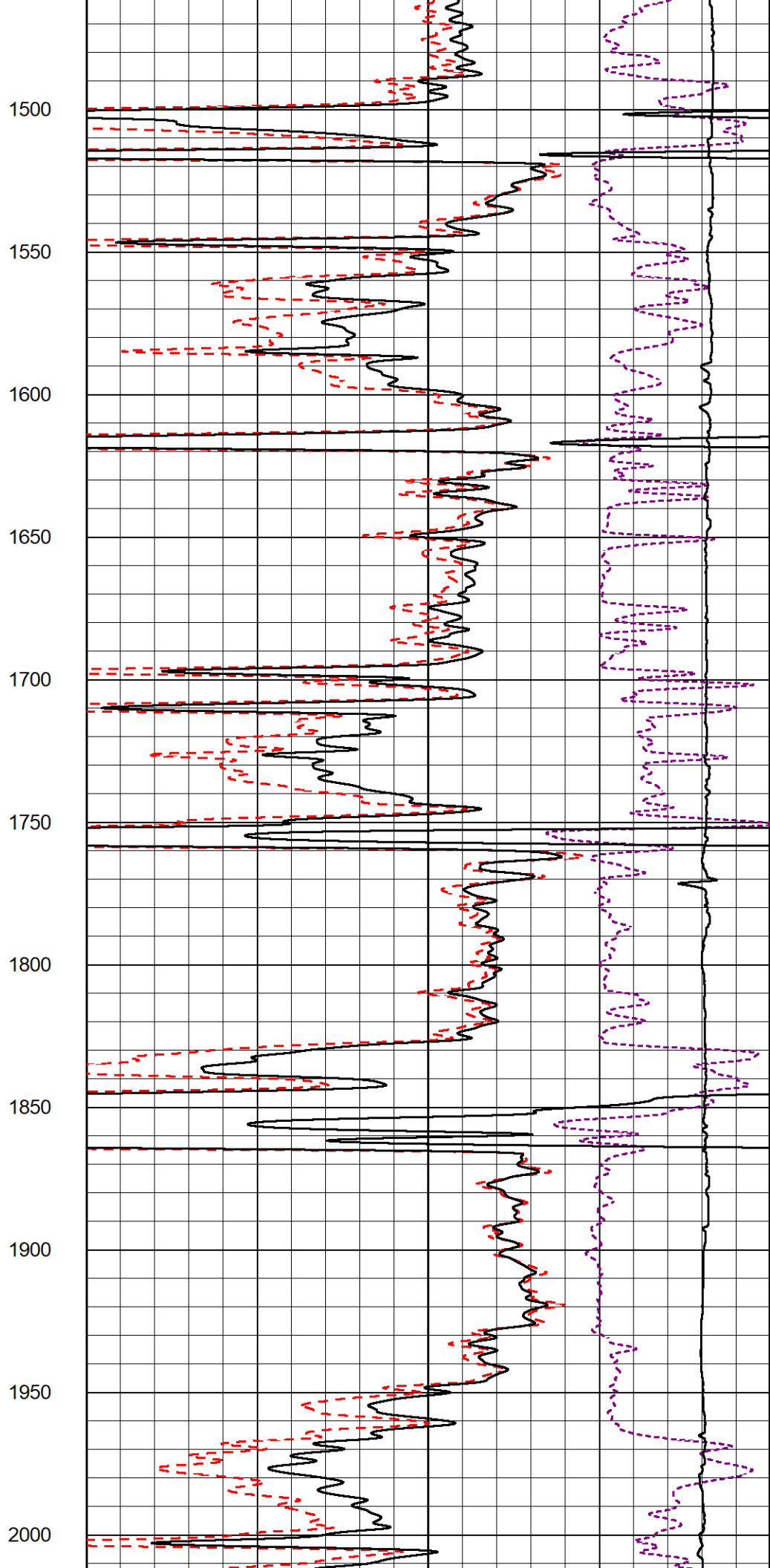
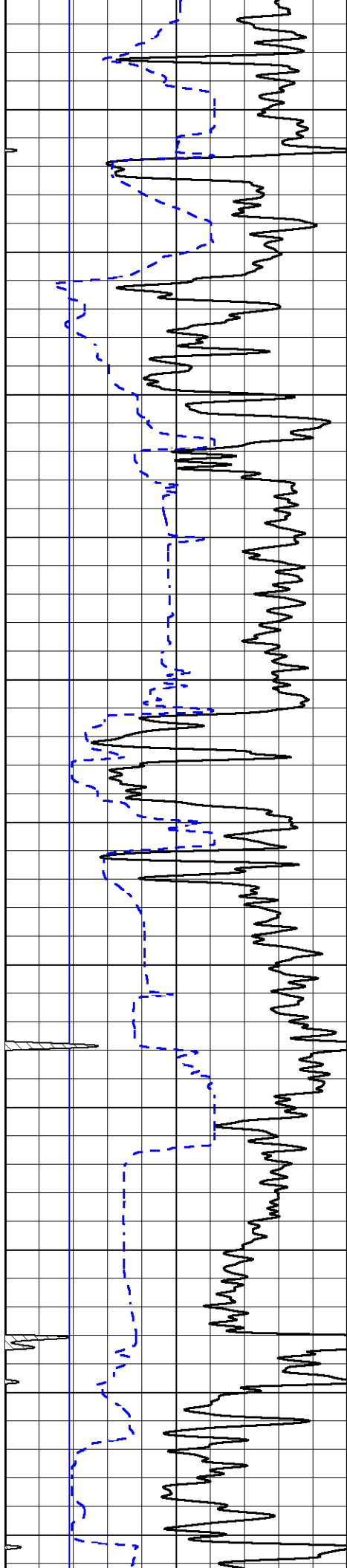
1250

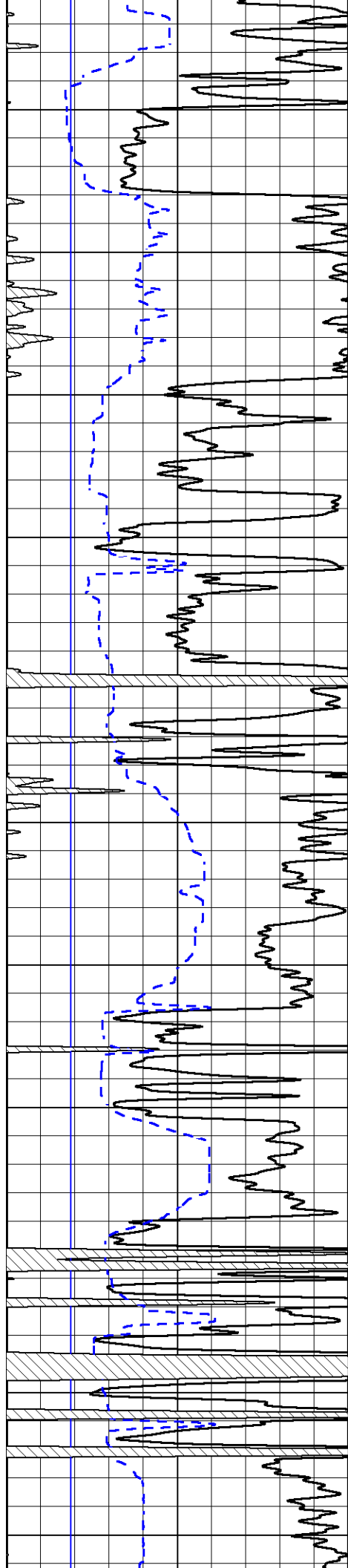
1300

1350

1400

1450





2050

2100

2150

2200

2250

2300

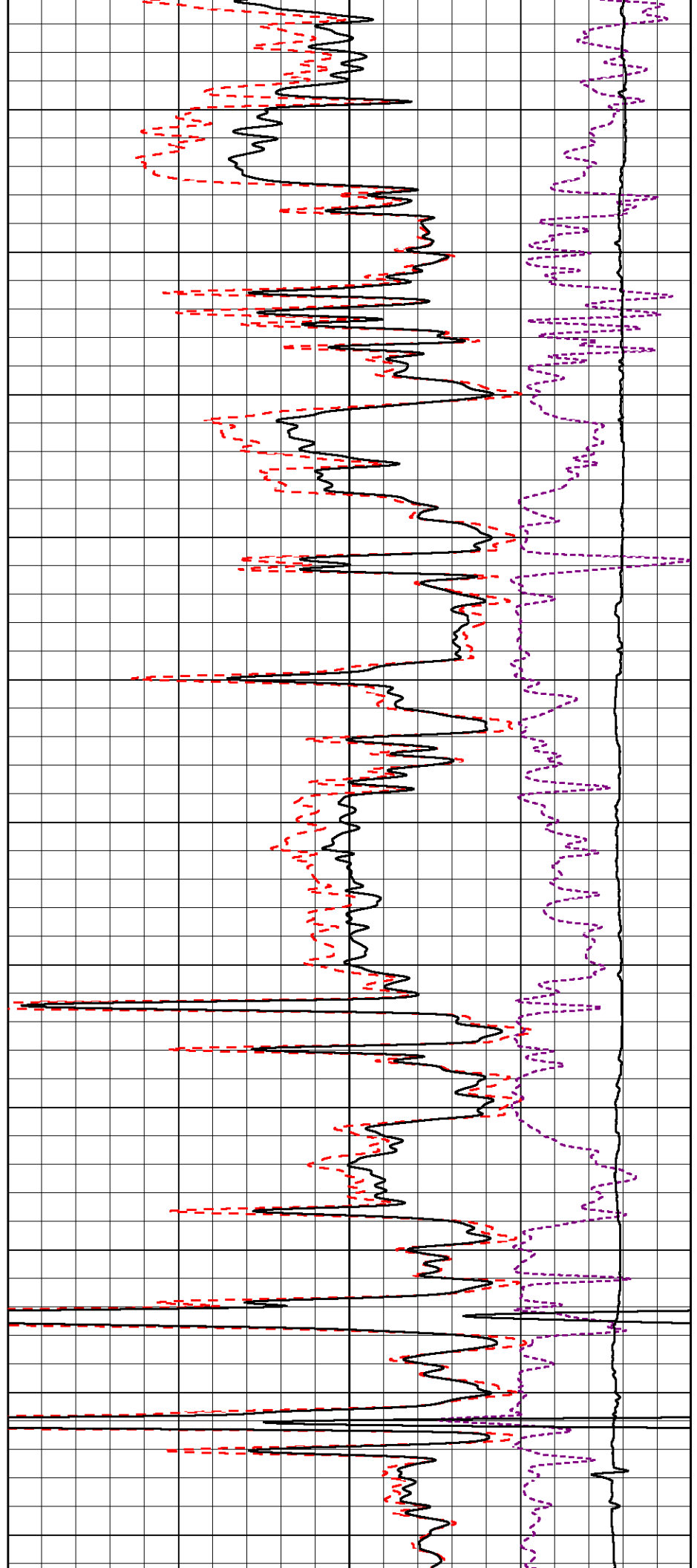
2350

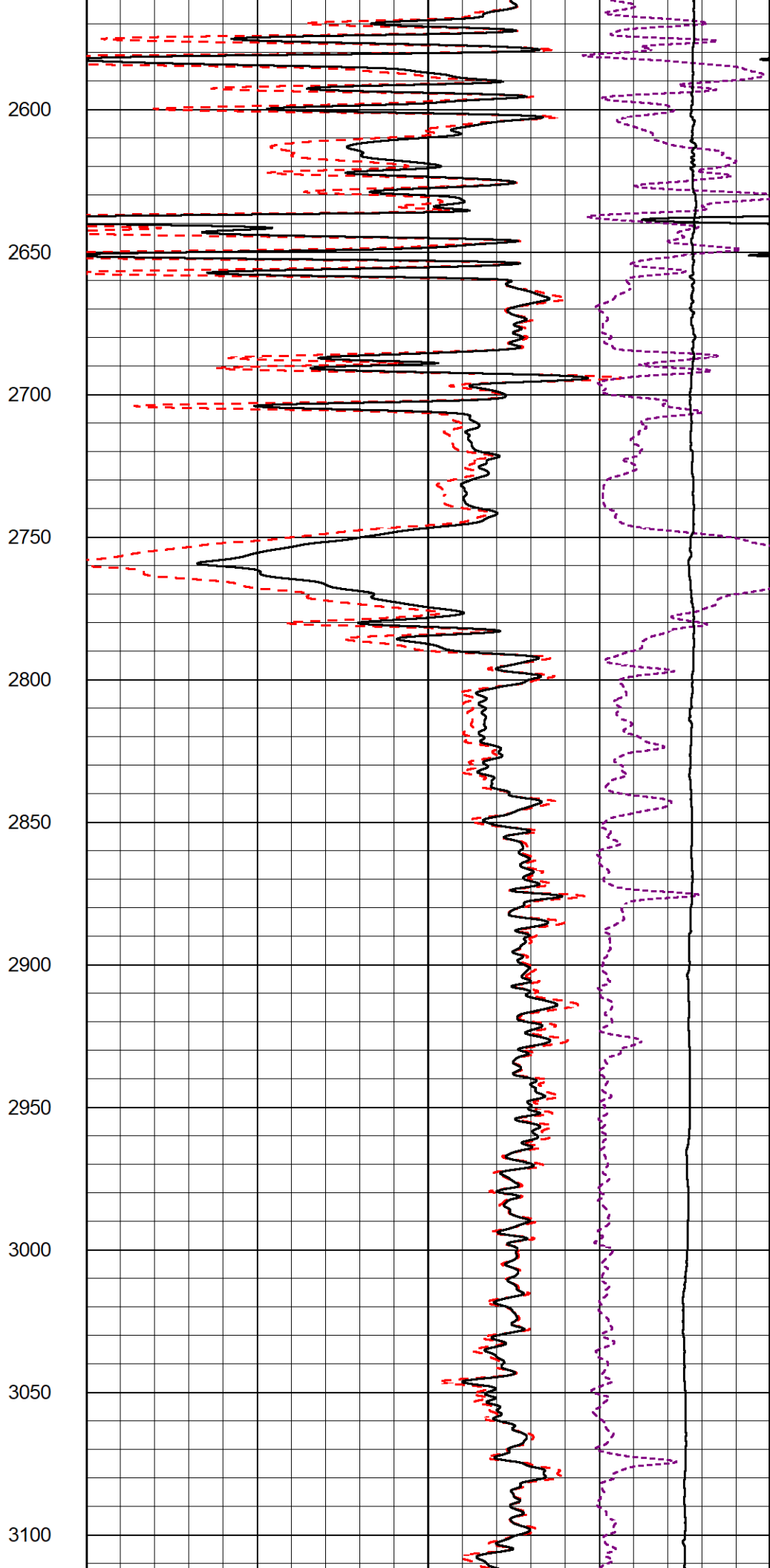
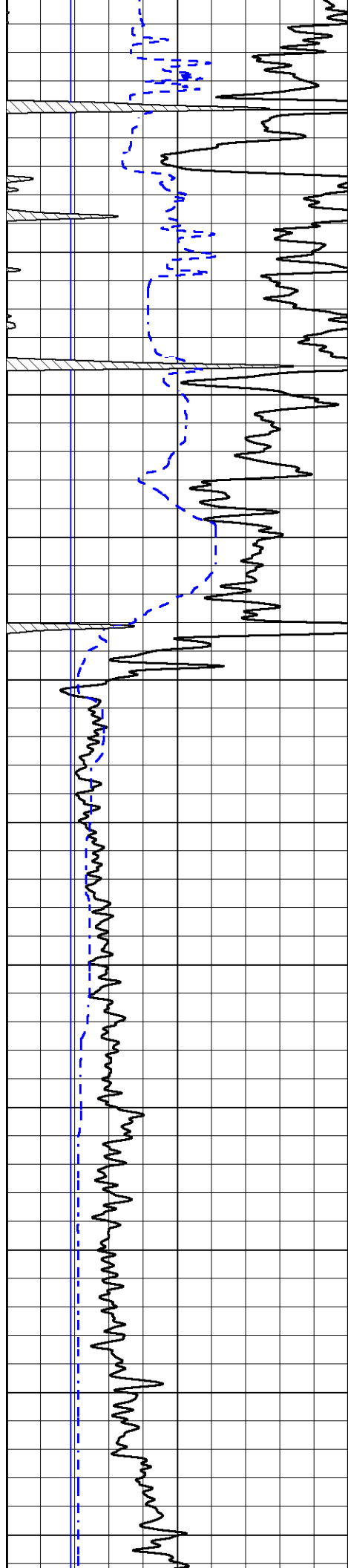
2400

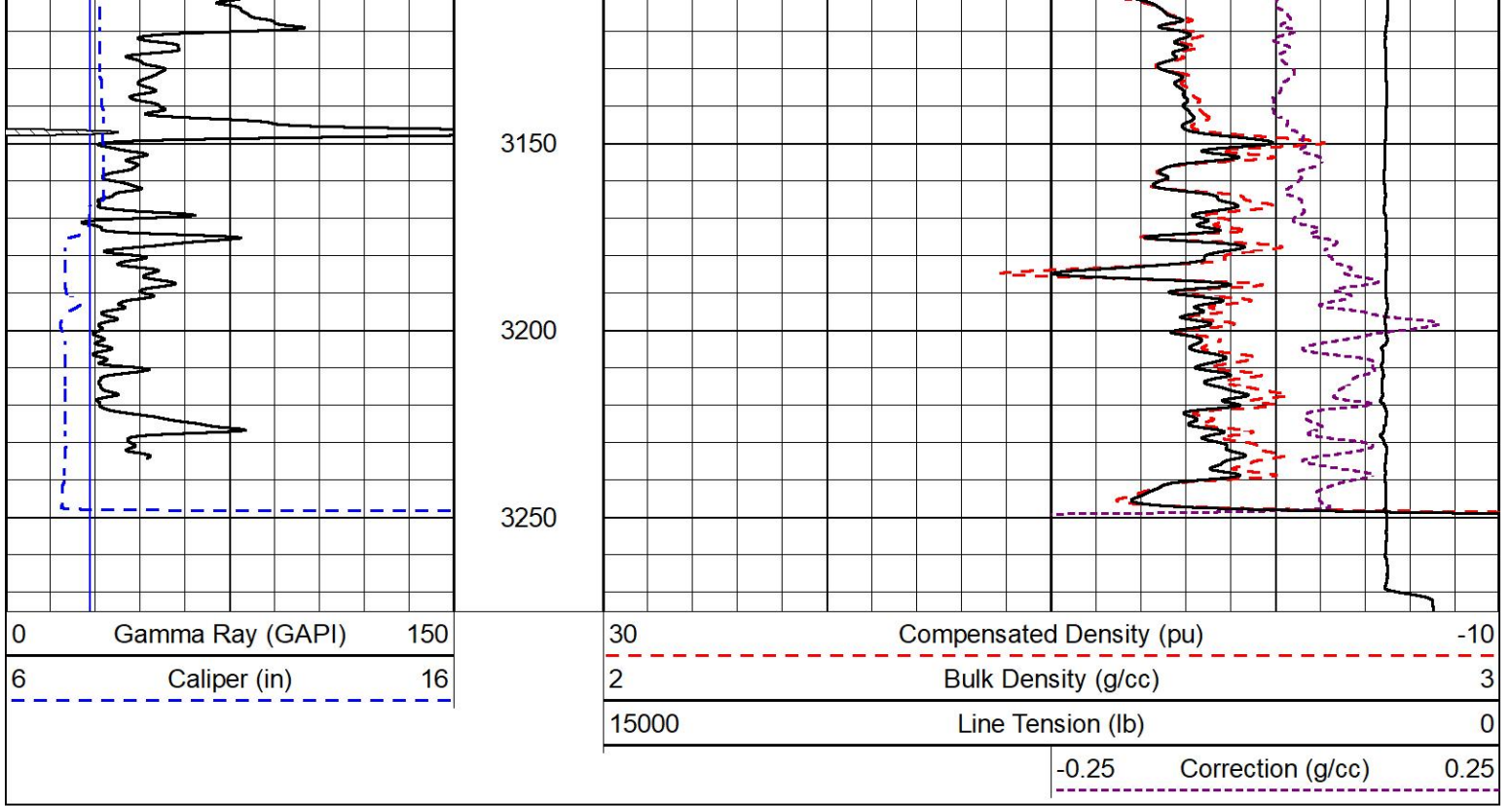
2450

2500

2550







## 2" SCALE BULK DENSITY

MAIN PASS

Database File val\_johnson\_2\_25\_owwo\_swd.db  
 Dataset Pathname stackml/pass3.1  
 Presentation Format \_CNDLS~1  
 Dataset Creation Wed Nov 03 14:35:08 2021  
 Charted by Depth in Feet scaled 1:240

