



**COMPENSATED  
DENSITY / NEUTRON  
LOG**

Company C & G DRILLING, INC.  
Well JOSEPH "A" #1  
Field WILDCAT  
County BUTLER State KANSAS

Location: API #: 15-015-24152-0000  
1827' FSL & 3003' FEL  
NW - SE - NE - SW  
Permanent Datum GROUND LEVEL Elevation 1411  
Log Measured From KELLY BUSHING 9' A.G.L.  
Drilling Measured From KELLY BUSHING  
Other Services DILMEL  
Elevation  
SEC 14 TWP 24S RGE 4E  
K.B. 1420  
D.F. 1418  
G.L. 1411

Date	8/26/21		
Run Number	ONE		
Depth Driller	2590		
Depth Logger	2588		
Bottom Logged Interval	2564		
Top Log Interval	2000		
Casing Driller	8 5/8"@212'		
Casing Logger	212		
Bit Size	7 7/8"		
Type Fluid in Hole	CHEMICAL MUD	CHLORIDES 1.300 PPM	
Density / Viscosity	9.6/77		
pH / Fluid Loss	10.0/8.4		
Source of Sample	FLOWLINE		
Rm @ Meas. Temp	1.30@80F		
Rmf @ Meas. Temp	.975@80F		
Rmc @ Meas. Temp	1.56@80F		
Source of Rmf / Rmc	MEASUREMENT		
Rm @ BHT	1.00@103F		
Time Circulation Stopped	8 HOURS		
Time Logger on Bottom	3.45 A.M.		
Maximum Recorded Temperature	103F		
Equipment Number	922339		
Location	HAYS, KANSAS		
Recorded By	JEFF LUEBBERS		
Witnessed By	BRANDON WOLFE		

<<< Fold Here >>>

All interpretations are opinions based on inferences from electrical or other measurements and we cannot and do not guarantee the accuracy or correctness of any interpretation, and we shall not, except in the case of gross or willful negligence on our part, be liable or responsible for any loss, costs, damages, or expenses incurred or sustained by anyone resulting from any interpretation made by any of our officers, agents or employees. These interpretations are also subject to our general terms and conditions set out in our current Price Schedule.

15-015-24152-0000 Comments

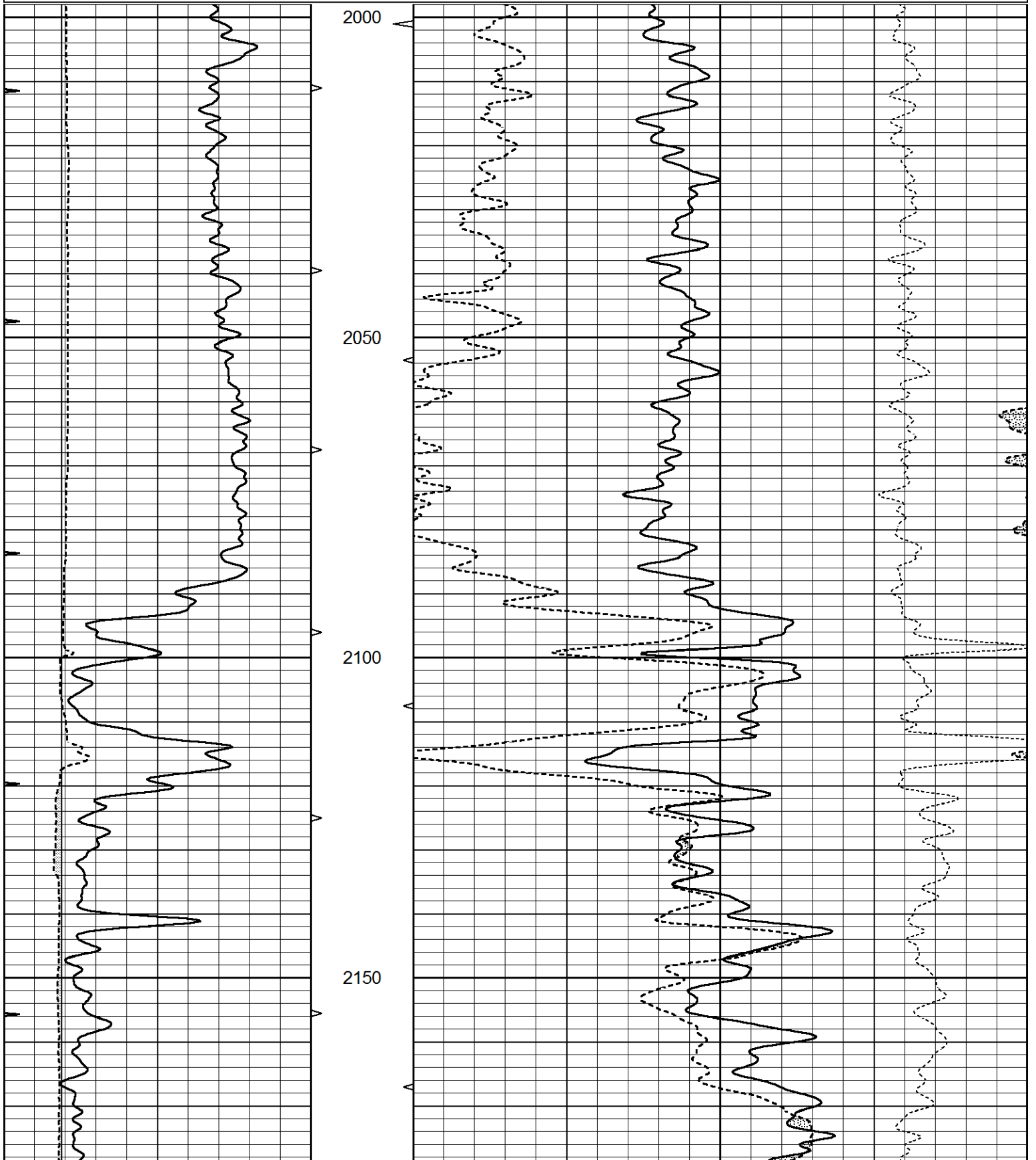
THANK YOU FOR USING ELI WIRELINE HAYS, KANSAS (785) 628-6395  
DIRECTIONS  
NEWTON, KS., 17E. ON 1ST. ST. TO "RIVER VALLEY RD.", 4S. TO "110TH", 2E. TO "OHIO ST.", 1S.,  
1/2E., 1/2S. INTO

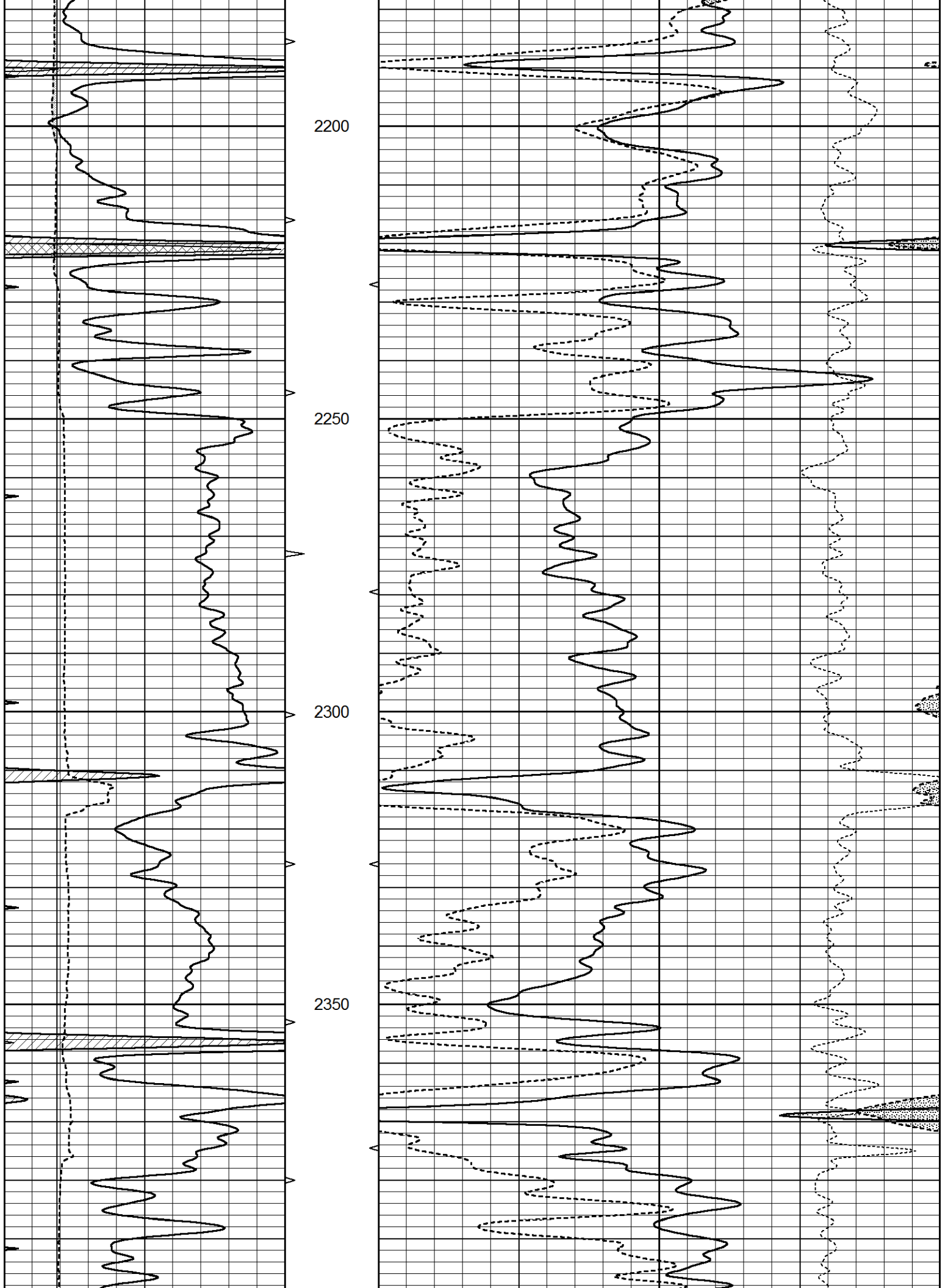


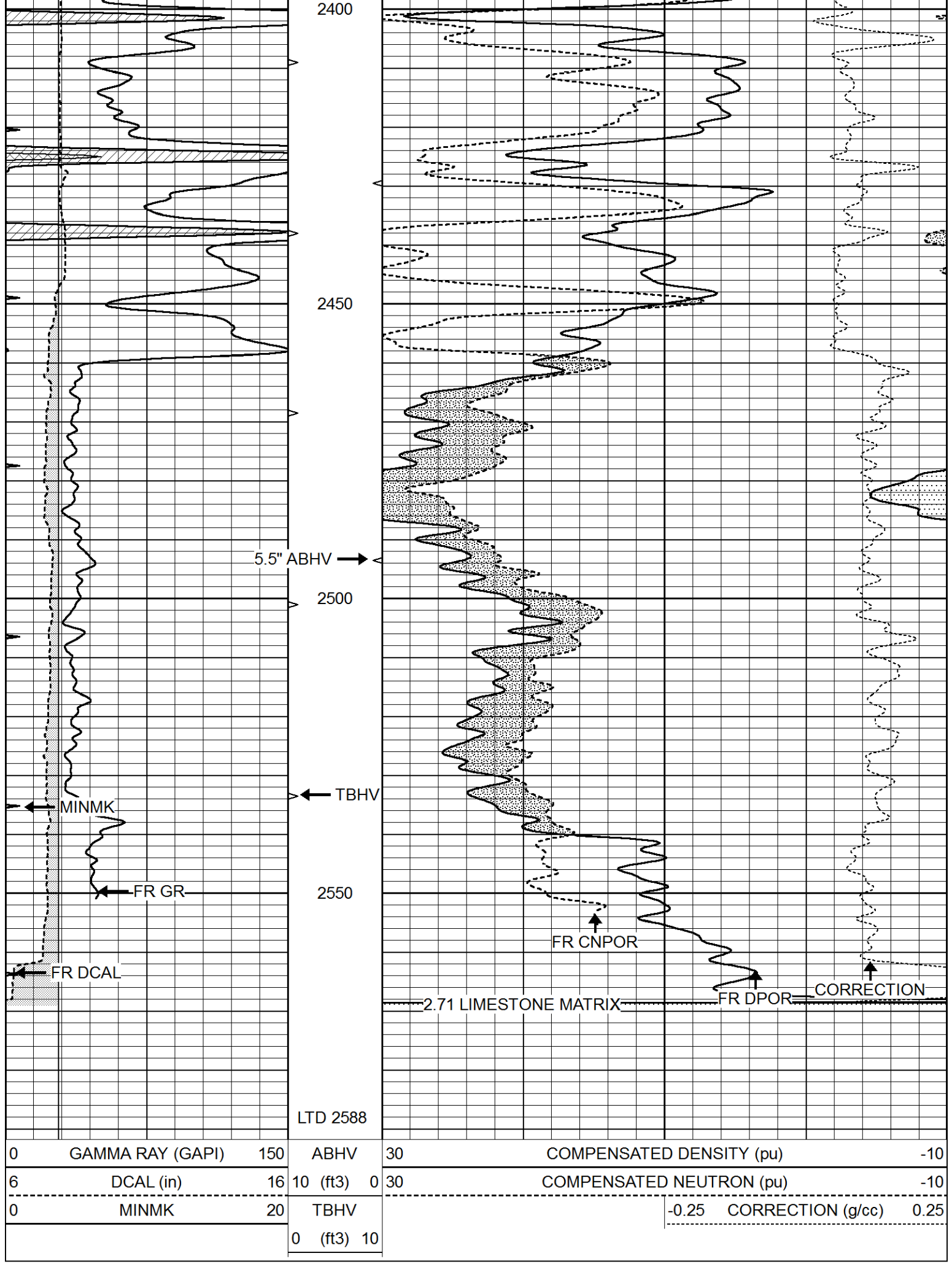
# MAIN SECTION

Database File 5652ddn.db  
 Dataset Pathname pass3.1P  
 Presentation Format den\_neu  
 Dataset Creation Thu Aug 26 04:53:14 2021  
 Charted by Depth in Feet scaled 1:240

0	GAMMA RAY (GAPI)	150	ABHV	30	COMPENSATED DENSITY (pu)	-10
6	DCAL (in)	16	10 (ft3)	0 30	COMPENSATED NEUTRON (pu)	-10
0	MINMK	20	TBHV		-0.25 CORRECTION (g/cc)	0.25
			0 (ft3)	10		





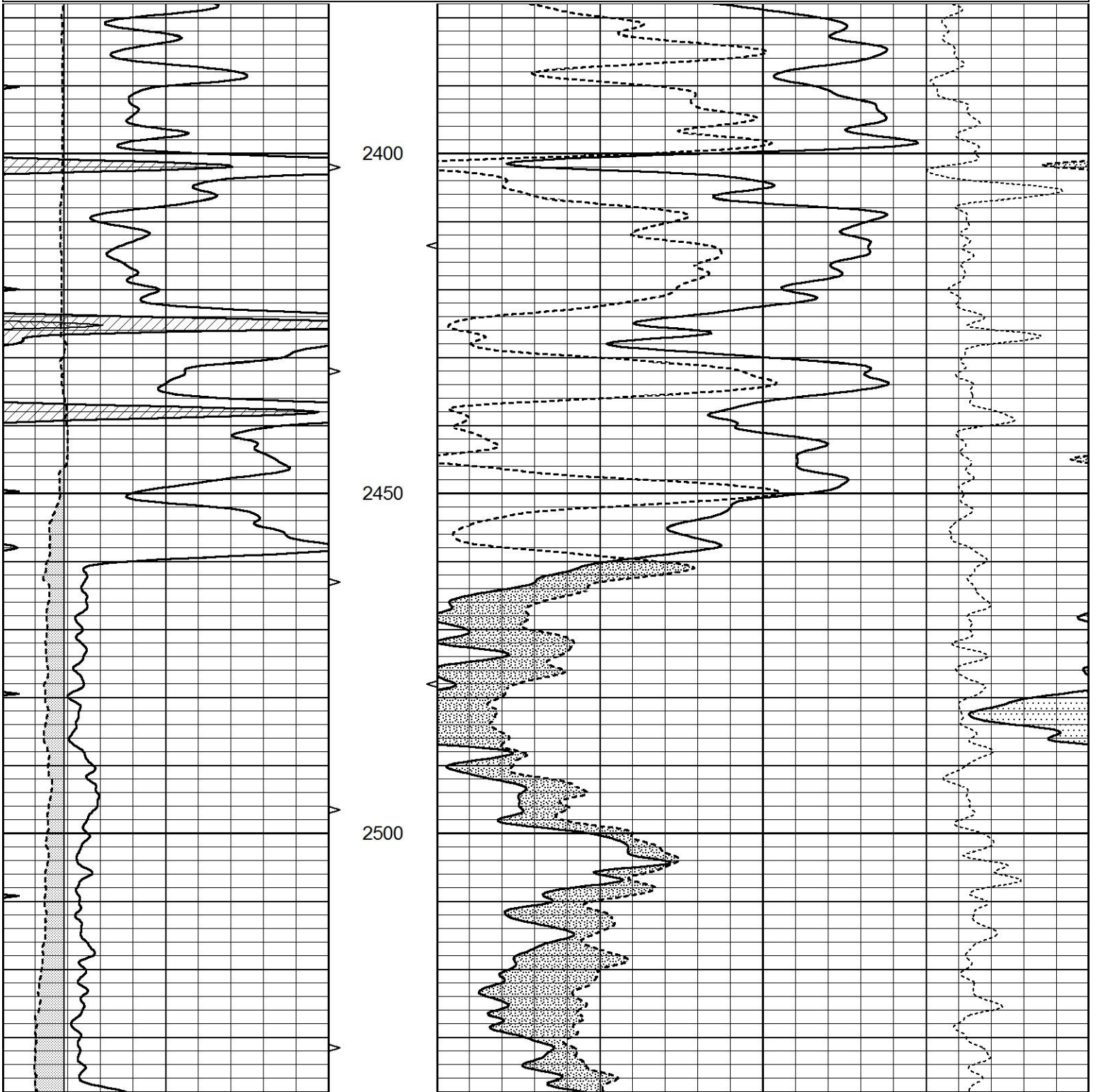


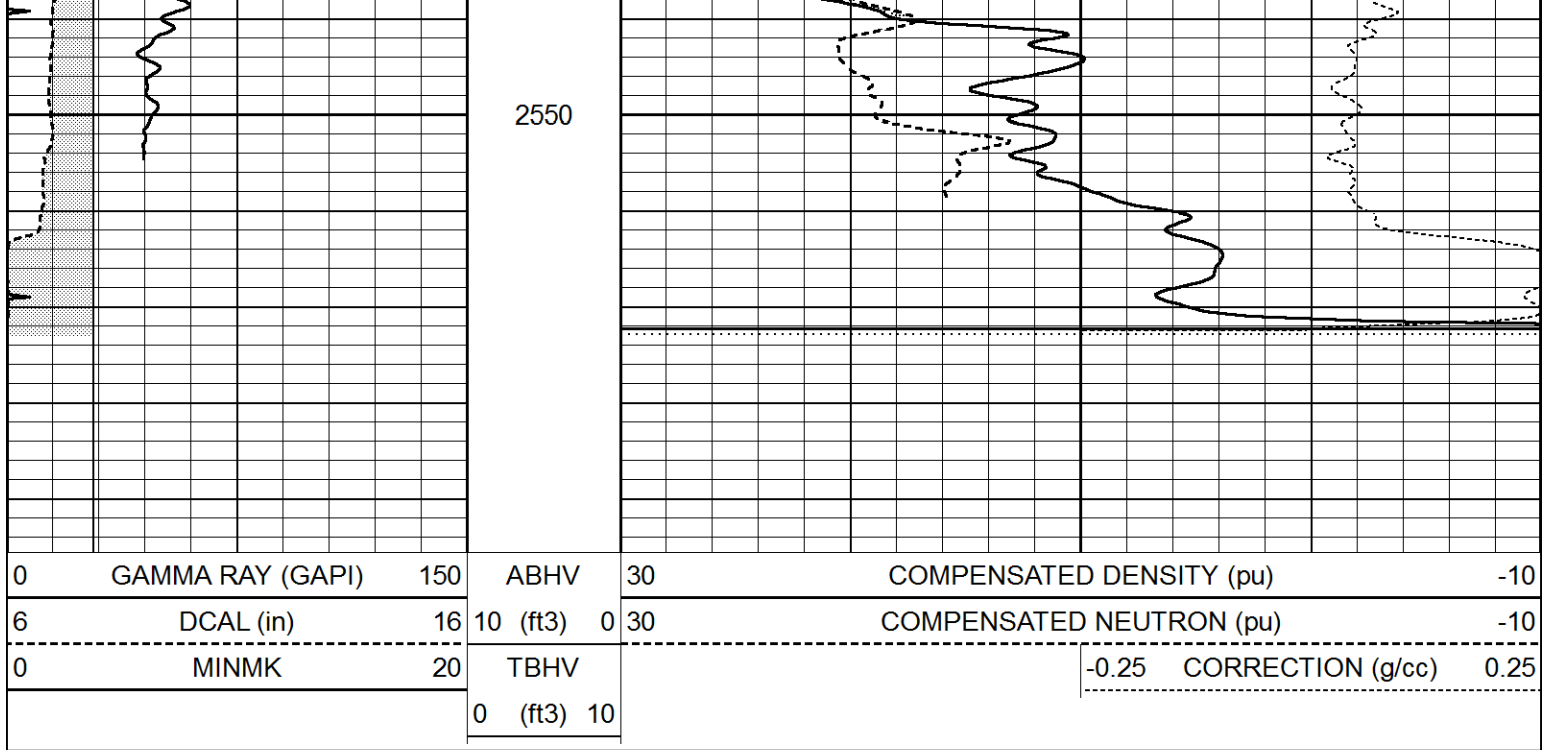


# REPEAT SECTION

Database File 5652ddn.db  
 Dataset Pathname pass2.1R  
 Presentation Format den\_neu  
 Dataset Creation Thu Aug 26 04:49:21 2021  
 Charted by Depth in Feet scaled 1:240

0	GAMMA RAY (GAPI)	150	ABHV	30	COMPENSATED DENSITY (pu)	-10
6	DCAL (in)	16	10 (ft3)	0 30	COMPENSATED NEUTRON (pu)	-10
0	MINMK	20	TBHV		-0.25 CORRECTION (g/cc)	0.25
			0 (ft3)	10		





### Calibration Report

Database File 5652ddn.db  
 Dataset Pathname pass3.1P  
 Dataset Creation Thu Aug 26 04:53:14 2021

### Dual Induction Calibration Report

Serial-Model: PROBE7-DILG  
 Surface Cal Performed: Thu Aug 26 04:11:57 2021  
 Downhole Cal Performed: Thu Mar 12 11:45:10 2020  
 After Survey Verification Performed: Thu Mar 12 11:45:00 2020

#### Surface Calibration

Loop:	Readings			References			Results	
	Air	Loop		Air	Loop		m	b
Deep	-0.014	0.629	V	0.000	400.000	mmho/m	650.000	-8.000
Medium	0.039	0.728	V	0.000	464.000	mmho/m	680.000	-52.000
Internal:	Zero	Cal		Zero	Cal		m	b
Deep	0.011	0.610	V	0.000	400.000	mmho/m	667.135	-7.256
Medium	0.005	0.712	V	0.000	464.000	mmho/m	655.677	-3.102

#### Downhole Calibration

	Readings			References			Results	
	Zero	Cal		Zero	Cal		m'	b'
Deep	0.000	0.000	mmho/m	14.508	388.384	mmho/m	1.000	0.000
Medium	0.000	0.000	mmho/m	166.367	504.400	mmho/m	1.000	0.000
LL3		7.500	V		1400.000	Ohm-m		
		0.000	V		20.000	Ohm-m		
		-7.200	V		4000.000	mmho-m		

#### After Survey Verification

	Readings			Targets			Results	
	Zero	Cal		Zero	Cal		m'	b'
Deep	0.000	0.000	mmho/m	0.000	0.000	mmho/m	0.000	0.000

Medium	0.000	0.000	mmho/m	0.000	0.000	mmho/m	0.000	0.000
LL3		1.000	Ohm-m		1.000	Ohm-m		
		0.000	Ohm-m		0.000	Ohm-m		
		0.000	mmho-m		4000.000	mmho-m		

Litho Density Calibration Report  
Serial: 004      Model: PRB

Master Calibration

Performed Tue May 18 11:02:48 2021

	Background	Magnesium	Aluminum	Aluminum+Fe	
Window 1	1187.1	10004.0	3142.5	2810.8	cps
Window 2	1084.9	8556.6	2749.3	2502.4	cps
Window 3	923.1	5129.8	1819.8	1719.3	cps
Window 4	263.5	263.6	259.7	262.8	cps
Long Space	0.0	7471.7	1664.4	1417.5	cps
Short Space	1.5	984.9	645.6	561.2	cps
Rho		1.7100	2.5900	0.0000	g/cc
Pe		2.0000	2.7500	5.7900	
Rib Angle	: 44.3	Rib Slope	: 0.976	Density/Spine Ratio	: 0.564
Spine Angle	: 74.3	Spine Slope	: 3.555	Spine Intercept	: -15.6

Before Survey Verification

Performed Wed Dec 31 18:00:00 1969

Window 1	0.0	0.0	0.0	0.0	cps
Window 2	0.0	0.0	0.0	0.0	cps
Window 3	0.0	0.0	0.0	0.0	cps
Window 4	0.0	0.0	0.0	0.0	cps
Long Space	0.0	0.0	0.0	0.0	cps
Short Space	0.0	0.0	0.0	0.0	cps
Measured Rho		0.0000	0.0000	0.0000	g/cc
Measured Correction		0.0000	0.0000	0.0000	g/cc
Measured Pe			0.0000	0.0000	

After Survey Verification

Performed Wed Dec 31 18:00:00 1969

Window 1	0.0	0.0	0.0	0.0	cps
Window 2	0.0	0.0	0.0	0.0	cps
Window 3	0.0	0.0	0.0	0.0	cps
Window 4	0.0	0.0	0.0	0.0	cps
Long Space	0.0	0.0	0.0	0.0	cps
Short Space	0.0	0.0	0.0	0.0	cps
Measured Rho		0.0000	0.0000	0.0000	g/cc
Measured Correction		0.0000	0.0000	0.0000	g/cc
Measured Pe			0.0000	0.0000	

Compensated Neutron Calibration Report

Serial Number:      070808PMC  
Tool Model:          NABORS

PRE-SURVEY VERIFICATION

Detector	Readings	Measured	Target
Short Space	cps		
Long Space	cps	pu	pu

POST-SURVEY VERIFICATION

Detector	Readings	Measured	Target
Short Space	cps		
Long Space	cps	pu	pu

Gamma Ray Calibration Report

Serial Number:	070558		
Tool Model:	OPEN_GR		
Performed:	Wed Aug 25 05:44:31 2021		
Calibrator Value:	1.0	GAPI	
Background Reading:	0.0	cps	
Calibrator Reading:	1.0	cps	
Sensitivity:	0.2800	GAPI/cps	