

MICRO LOG



Company C & G DRILLING, INC.
 Well JOSEPH "A" #1
 Field WILDCAT
 County BUTLER
 State KANSAS

Company C & G DRILLING, INC.
 Well JOSEPH "A" #1
 Field WILDCAT
 County BUTLER State KANSAS

Location: API #: 15-015-24152-0000
 1827' FSL & 3003' FEL
 NW - SE - NE - SW
 Permanent Datum GROUND LEVEL Elevation 1411
 Log Measured From KELLY BUSHING 9' A.G.L.
 Drilling Measured From KELLY BUSHING
 Other Services CDL/CNL DIL
 Elevation
 K.B. 1420
 D.F. 1418
 G.L. 1411

Date	8/26/21		
Run Number	TWO		
Depth Driller	2590		
Depth Logger	2588		
Bottom Logged Interval	2586		
Top Log Interval	2000		
Casing Driller	8 5/8"@212'		
Casing Logger	212		
Bit Size	7 7/8"		
Type Fluid in Hole	CHEMICAL MUD	CHLORIDES 1.300 PPM	
Density / Viscosity	9.6/77		
pH / Fluid Loss	10.0/8.4		
Source of Sample	FLOWLINE		
Rm @ Meas. Temp	1.30@80F		
Rmf @ Meas. Temp	.975@80F		
Rmc @ Meas. Temp	1.56@80F		
Source of Rmf / Rmc	MEASUREMENT		
Rm @ BHT	1.00@103F		
Time Circulation Stopped	8 HOURS		
Time Logger on Bottom	5.45 A.M.		
Maximum Recorded Temperature	103F		
Equipment Number	922339		
Location	HAYS, KANSAS		
Recorded By	JEFF LUEBBERS		
Witnessed By	BRANDON WOLFE		

<<< Fold Here >>>

All interpretations are opinions based on inferences from electrical or other measurements and we cannot and do not guarantee the accuracy or correctness of any interpretation, and we shall not, except in the case of gross or willful negligence on our part, be liable or responsible for any loss, costs, damages, or expenses incurred or sustained by anyone resulting from any interpretation made by any of our officers, agents or employees. These interpretations are also subject to our general terms and conditions set out in our current Price Schedule.

15-015-24152-0000 Comments

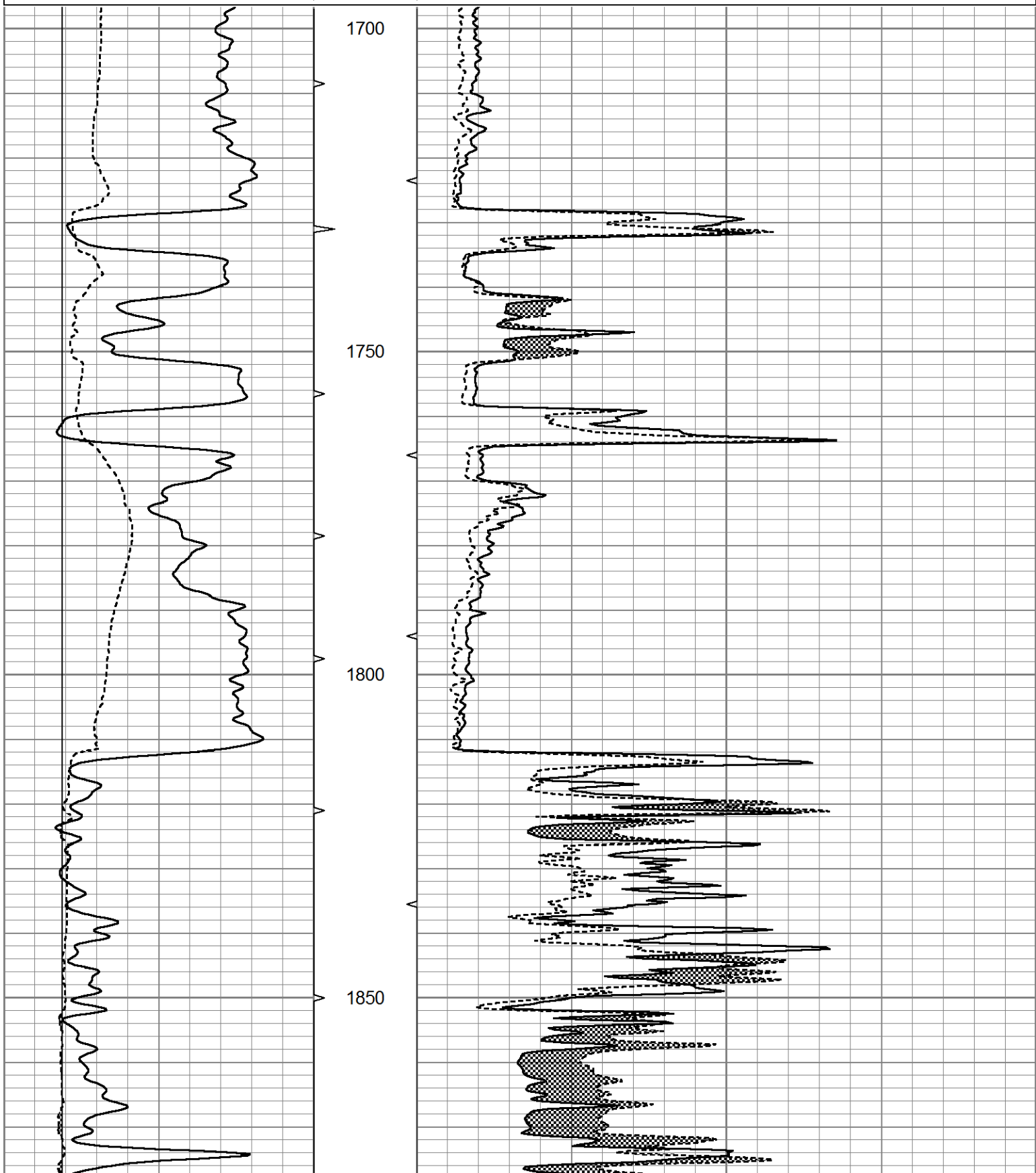
THANK YOU FOR USING ELI WIRELINE HAYS, KANSAS (785) 628-6395
 DIRECTIONS
 NEWTON, KS., 17E. ON 1ST. ST. TO "RIVER VALLEY RD.", 4S. TO "110TH", 2E. TO "OHIO ST.", 1S.,
 1/2E., 1/2S. INTO

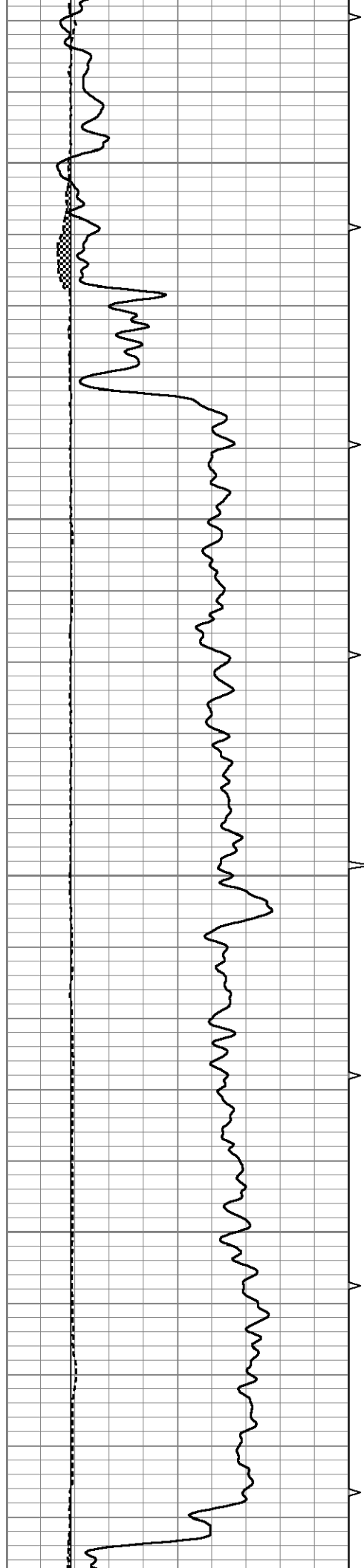


MAIN SECTION

Database File 5652ddn.db
 Dataset Pathname pass6.1
 Presentation Format micro
 Dataset Creation Thu Aug 26 06:17:15 2021
 Charted by Depth in Feet scaled 1:240

0	GR (GAPI)	150	ABHV	0	MEL20 (Ohm-m)	40
6	MELCAL (in)	16	10 (ft3)	0	MEL15 (Ohm-m)	40
			ABHV			
			0 (ft3)	10		



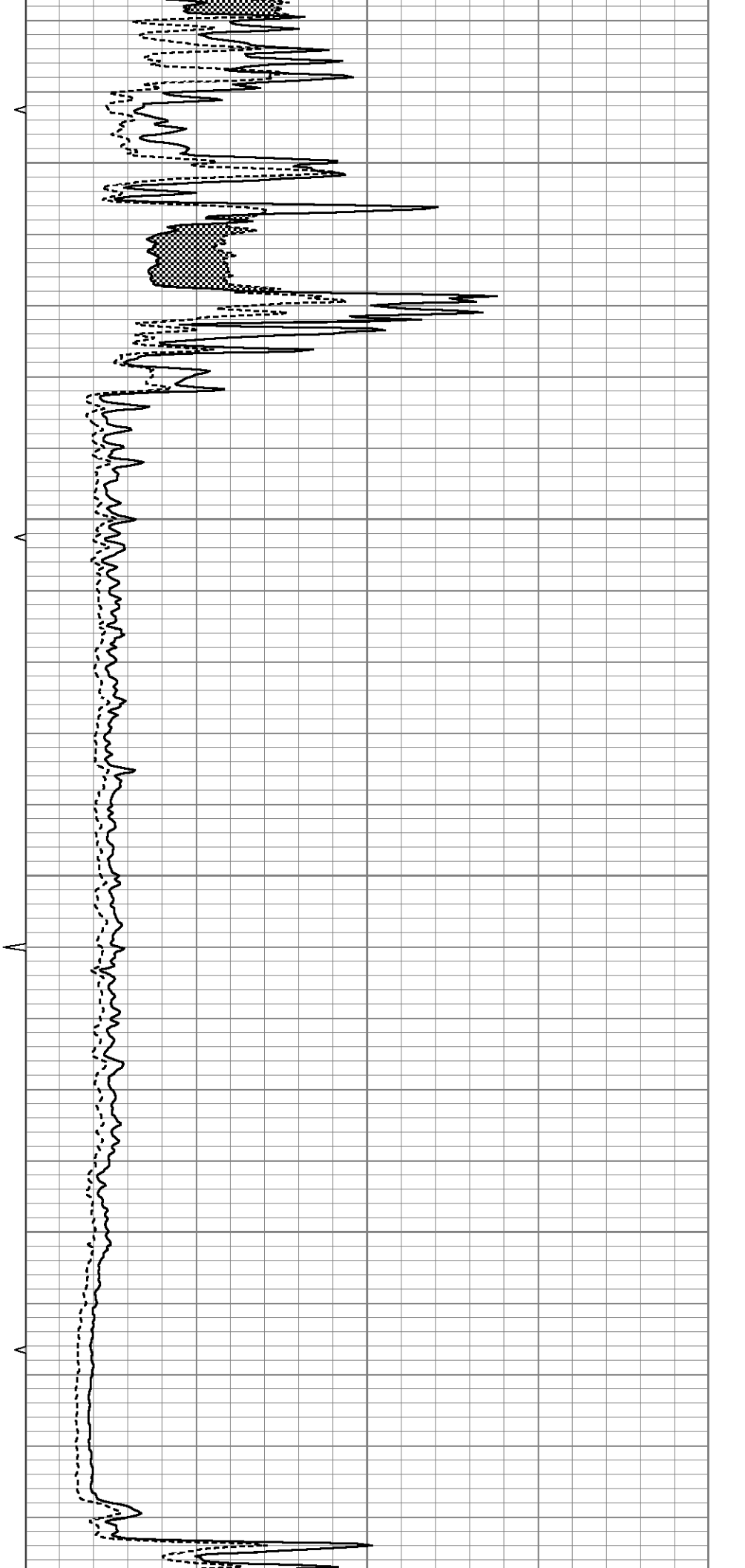


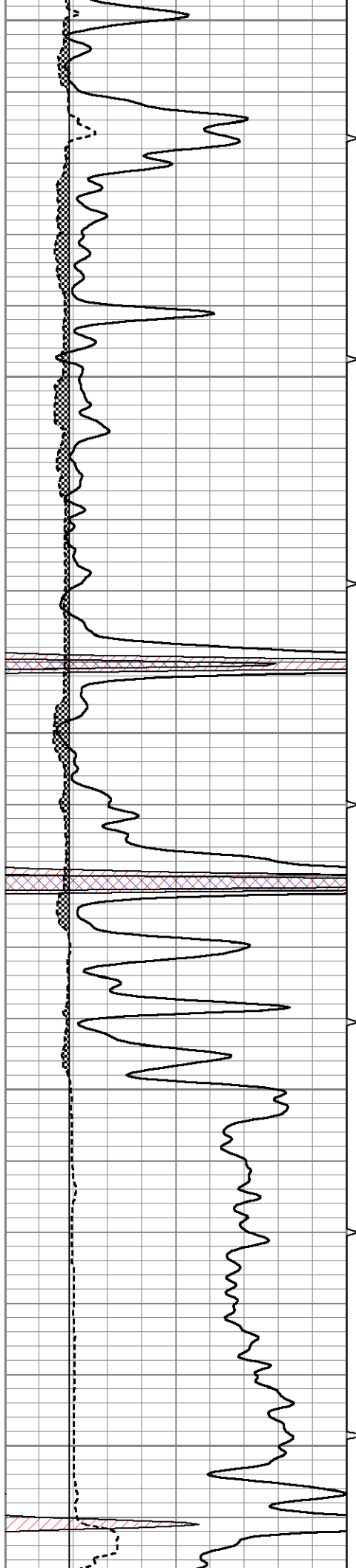
1900

1950

2000

2050





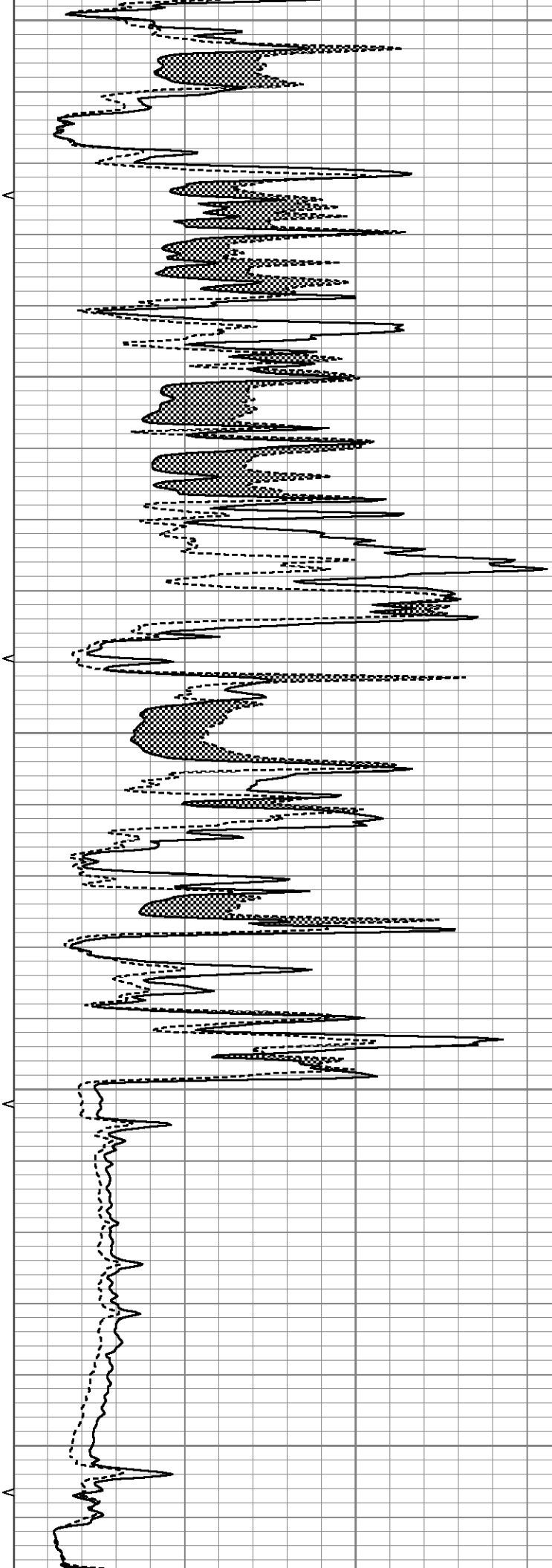
2100

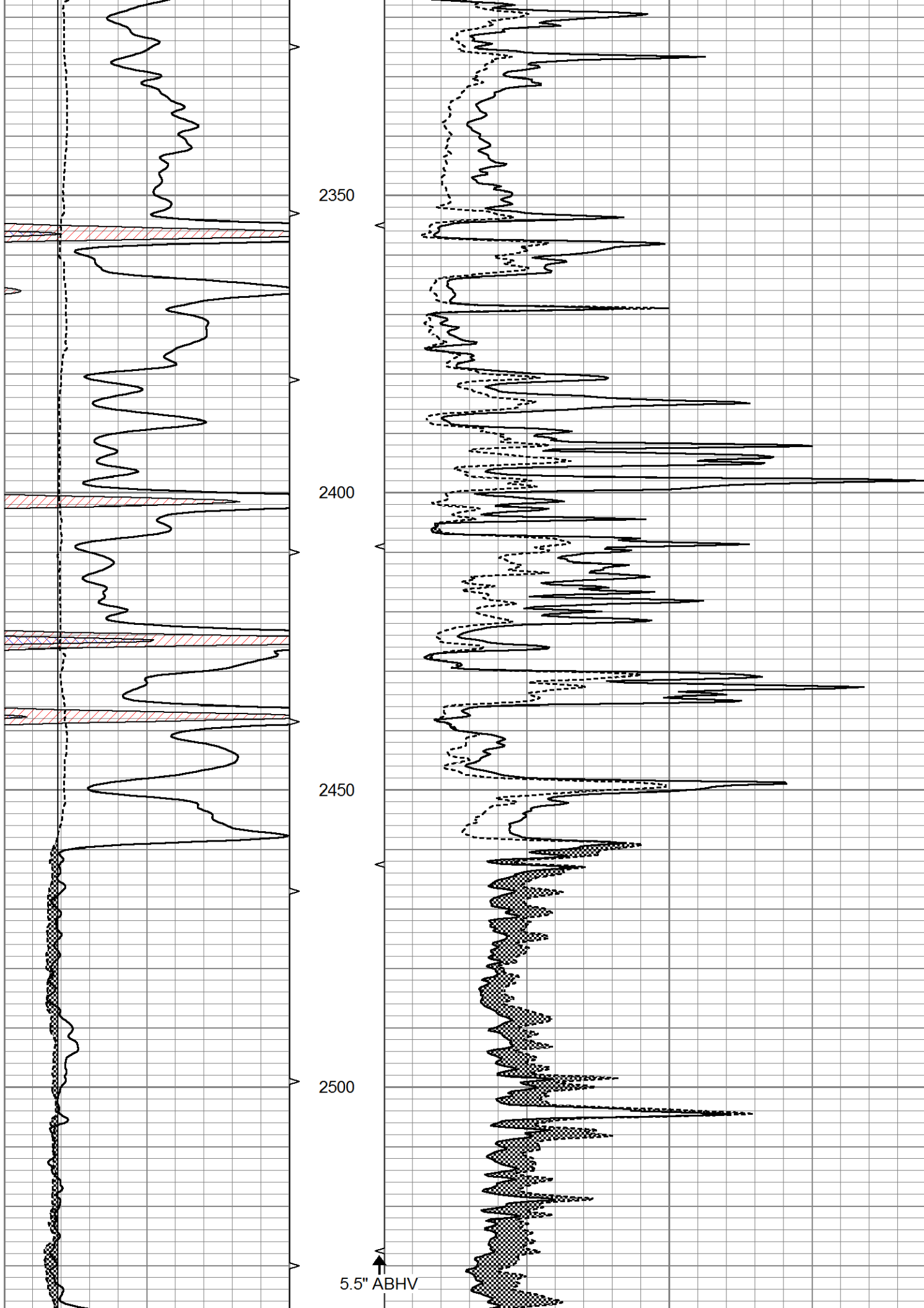
2150

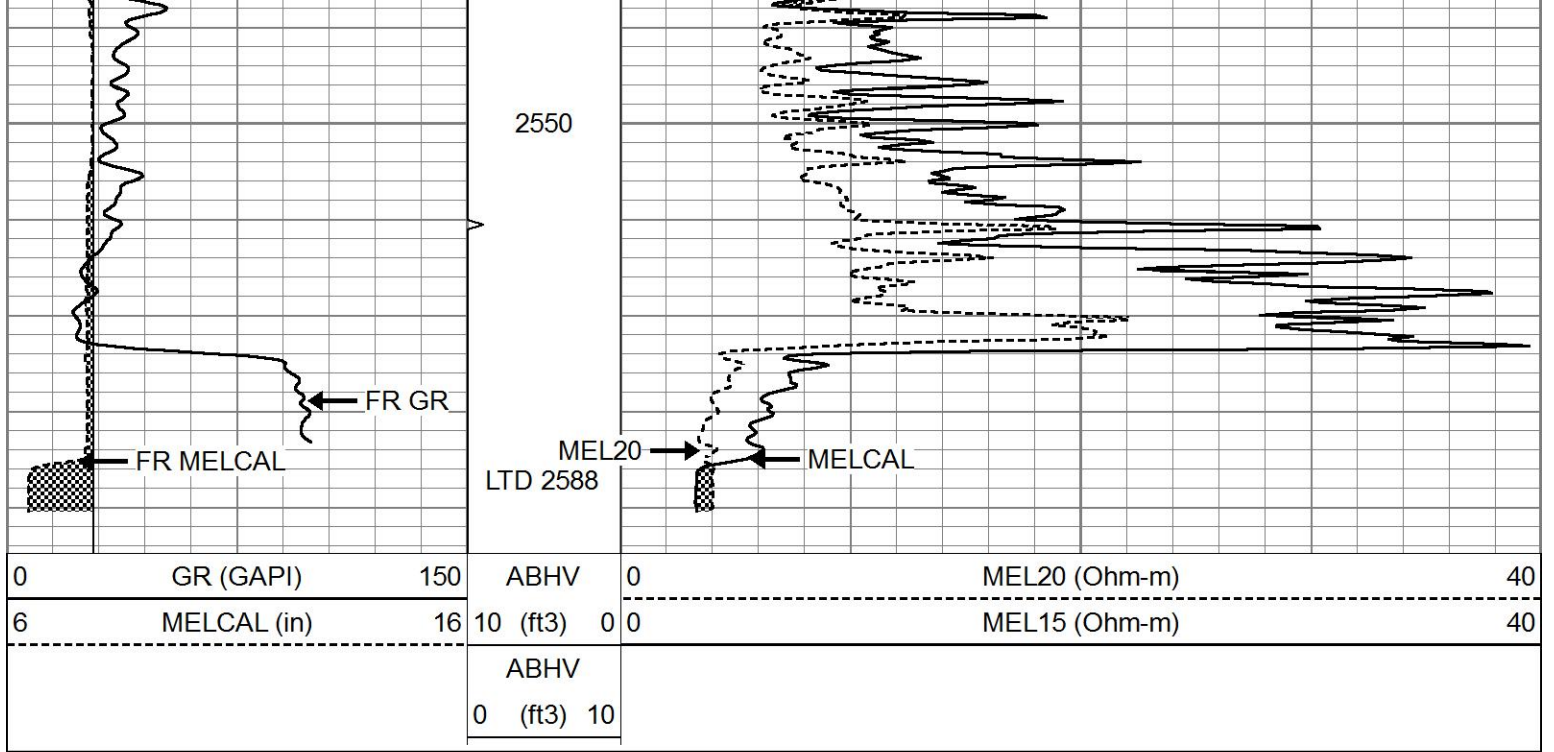
2200

2250

2300



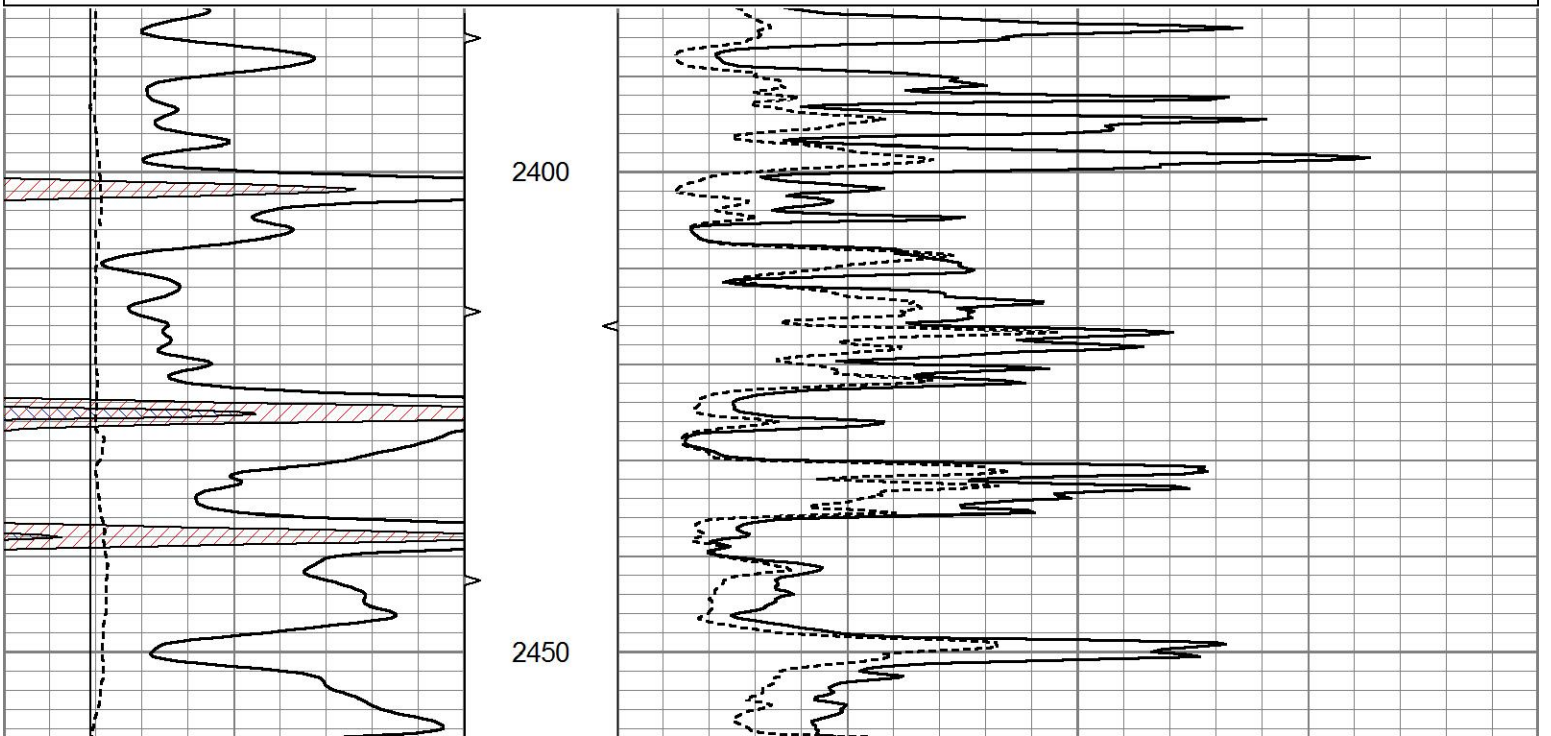


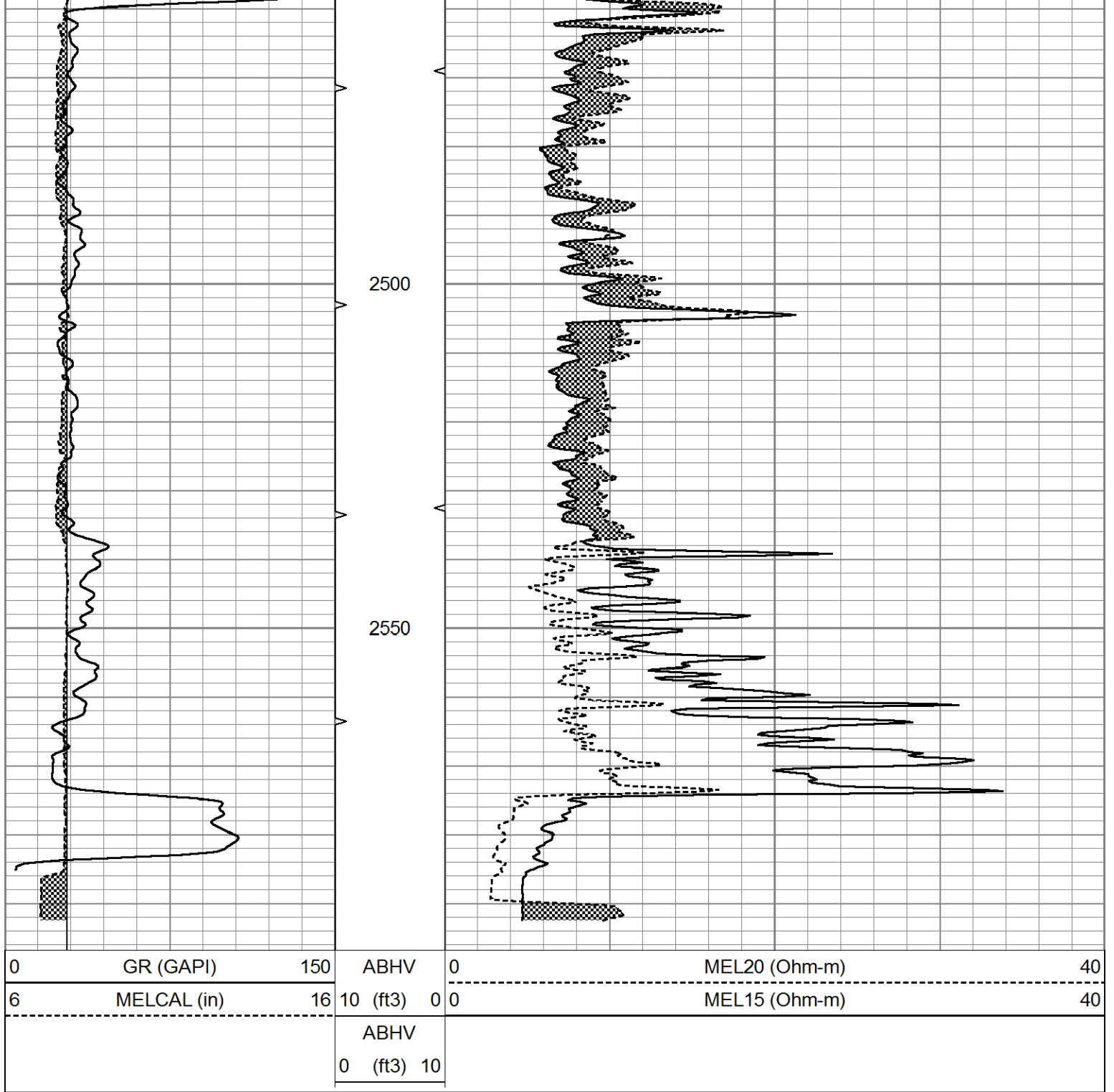


REPEAT SECTION

Database File 5652ddn.db
 Dataset Pathname pass5.2
 Presentation Format micro
 Dataset Creation Thu Aug 26 05:48:32 2021
 Charted by Depth in Feet scaled 1:240

0	GR (GAPI)	150	ABHV	0	MEL20 (Ohm-m)	40
6	MELCAL (in)	16	10 (ft3)	0	MEL15 (Ohm-m)	40
			ABHV			
			0 (ft3)	10		





Calibration Report

Database File 5652ddn.db
 Dataset Pathname pass6.1
 Dataset Creation Thu Aug 26 06:17:15 2021

MICRO Calibration Report

Serial Number: 070911
 Tool Model: ProbeN
 Performed: Thu Aug 26 06:05:53 2021

Caliper Calibration: Gain=3.535 Offset=2.521

References	Low Cal	High Cal
Readings	8.000	14.000
	1.550	3.247

1.5" Calibration: Gain=18.000 Offset=1.000

References	Low Cal	High Cal
Readings	0.000	20.000
	0.001	1.291

2" Calibration: Gain=30.000 Offset=0.500

References	Low Cal	High Cal
Readings	0.000	20.000
	0.003	1.103

Gamma Ray Calibration Report

Serial Number: 070559
Tool Model: OPEN_GR
Performed: Wed Aug 25 08:27:06 2021

Calibrator Value: 1.0 GAPI

Background Reading: 0.0 cps
Calibrator Reading: 1.0 cps

Sensitivity: 0.3600 GAPI/cps