



**DUAL RECEIVER  
CEMENT BOND LOG**

Company C & G DRILLING, INC.  
 Well JOSEPH "A" #1  
 Field WILDCAT  
 County BUTLER  
 State KANSAS  
 Country U.S.A.

Company C & G DRILLING, INC.  
 Well JOSEPH "A" #1  
 Field WILDCAT  
 County BUTLER  
 State KANSAS  
 Country U.S.A.

Location: API # : 15-015-24152-0000  
 1827' FSL & 3003' FEL  
 NW - SE - NE - SW  
 SEC 14 TWP 24S RGE 4E  
 Permanent Datum GROUND LEVEL Elevation 1411  
 Log Measured From KELLY BUSHING 9' A.G.L.  
 Drilling Measured From KELLY BUSHING  
 Other Services  
 PERF  
 2462-88  
 2 S.P.F.  
 Elevation  
 K.B. 1420  
 D.F. 1418  
 G.L. 1411

Date	9/17/21
Run Number	ONE
Depth Driller	2590
Depth Logger	2564
Bottom Logged Interval	2563
Top Log Interval	1650
Open Hole Size	7 7/8"
Type Fluid	WATER
Density / Viscosity	N/A
Max. Recorded Temp.	N/A
Estimated Cement Top	N/A
Time Well Ready	9:00 A.M.
Time Logger on Bottom	9:15 A.M.
Equipment Number	921063
Location	HAYS, KANSAS
Recorded By	JEFF LUEBBERS
Witnessed By	TIM GULLICK

Borehole Record		Tubing Record	
Run Number	Bit From To	Size	Weight From To
1	12 1/4" 0 212		
2	7 7/8" 212 2590		

Casing Record	Size	Wgt/Ft	Top	Bottom
Surface String	8 5/8"	20#	0	212
Prot. String	5.5"	15#	0	2589
Production String				
Liner				

<<< Fold Here >>>

All interpretations are opinions based on inferences from electrical or other measurements and we cannot and do not guarantee the accuracy or correctness of any interpretation, and we shall not, except in the case of gross or willful negligence on our part, be liable or responsible for any loss, costs, damages, or expenses incurred or sustained by anyone resulting from any interpretation made by any of our officers, agents or employees. These interpretations are also subject to our general terms and conditions set out in our current Price Schedule.

**Comments**

THANK YOU FOR USING E.L.I. WIRELINE SERVICES HAYS, KANSAS (785) 628-6395  
 DIRECTIONS  
 NEWTON, KS.(135&1ST. ST. EXIT) 17E. ON 1ST ST. TO "RIVER VALLEY RD.", 4 S. TO "110TH", 2E. TO  
 "OHIO ST.", 1S, 1/2E., S. INTO

Database File: 5412bgr.db  
 Dataset Pathname: pass2.4  
 Presentation Format: dcbl02  
 Dataset Creation: Sun Sep 12 10:13:26 2021  
 Charted by: Depth in Feet scaled 1:240

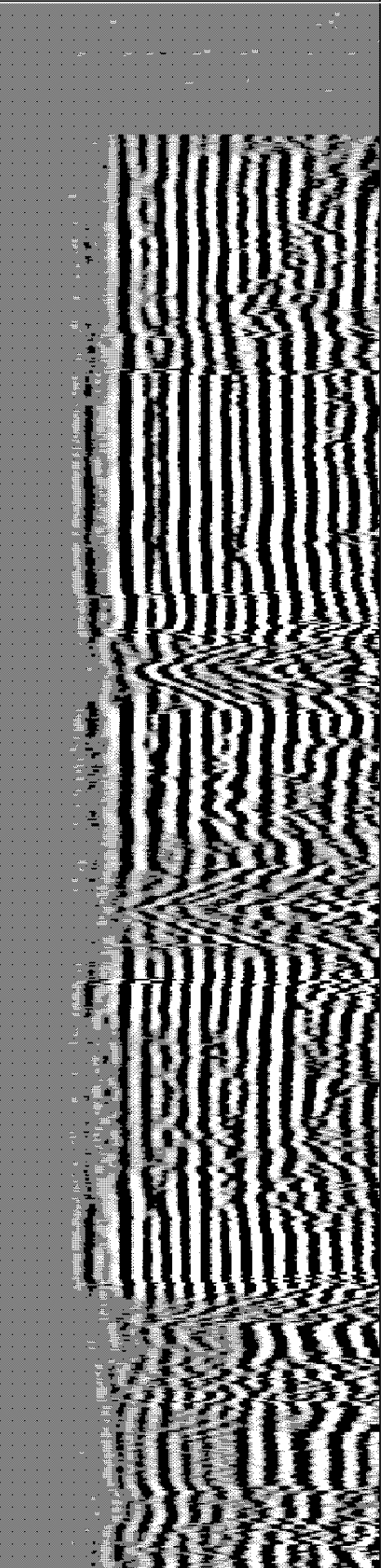
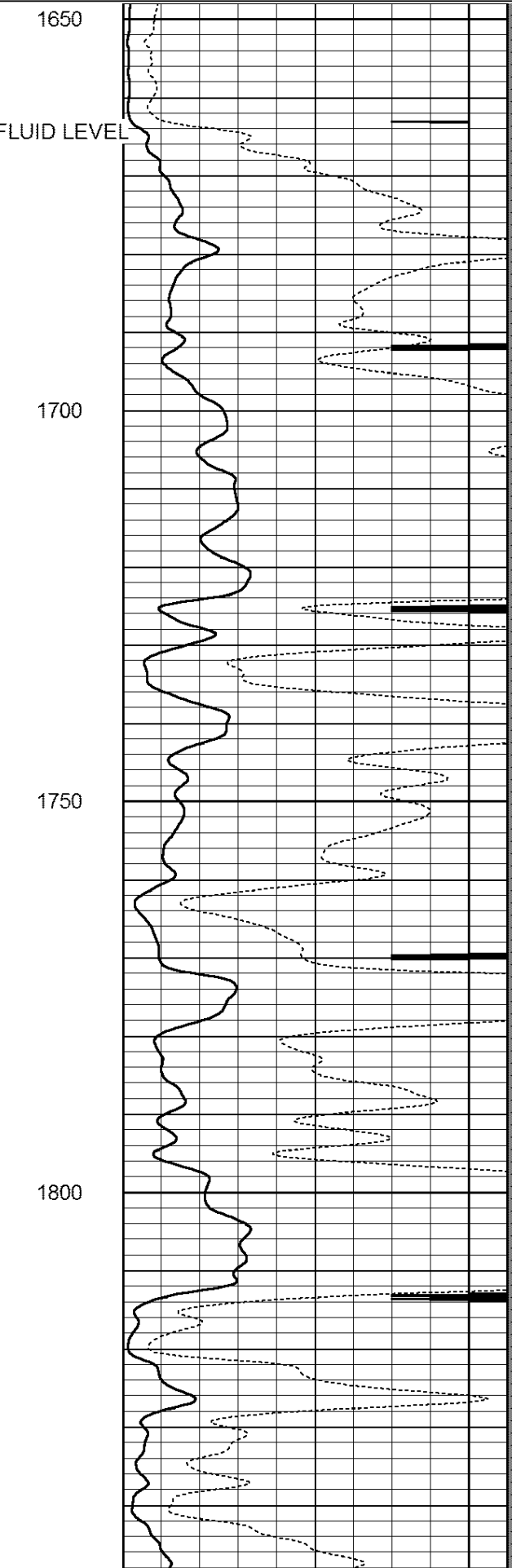
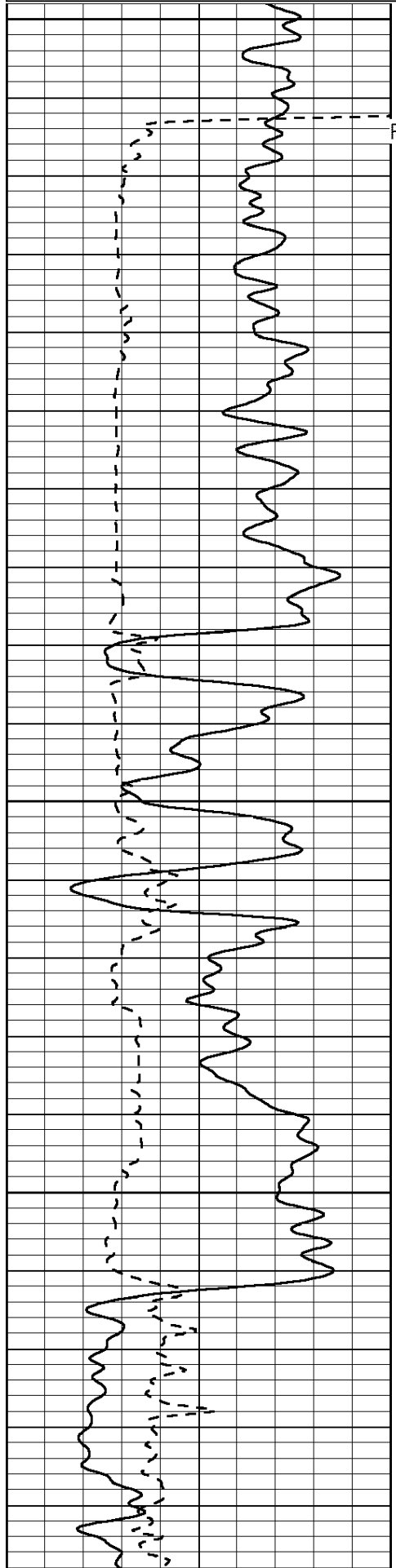
Charted by:

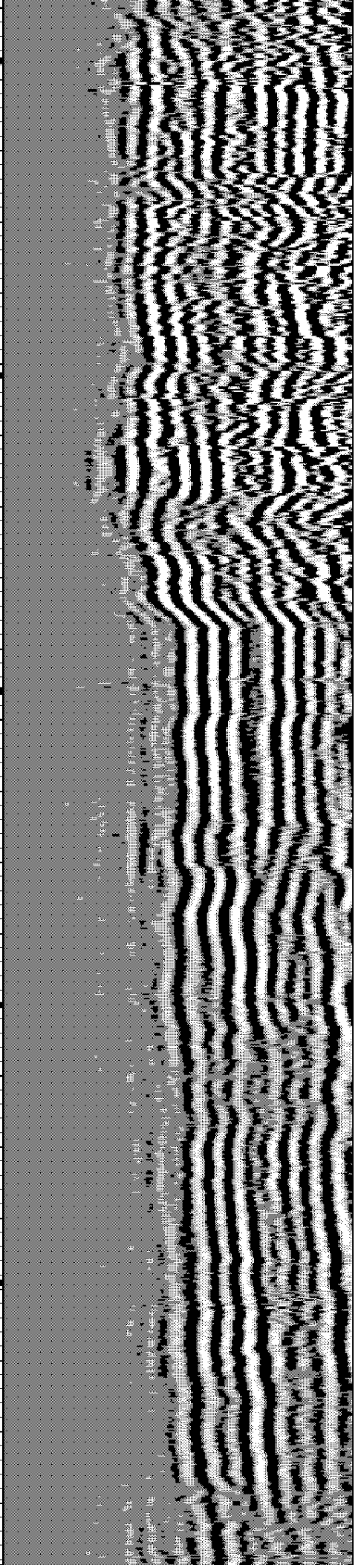
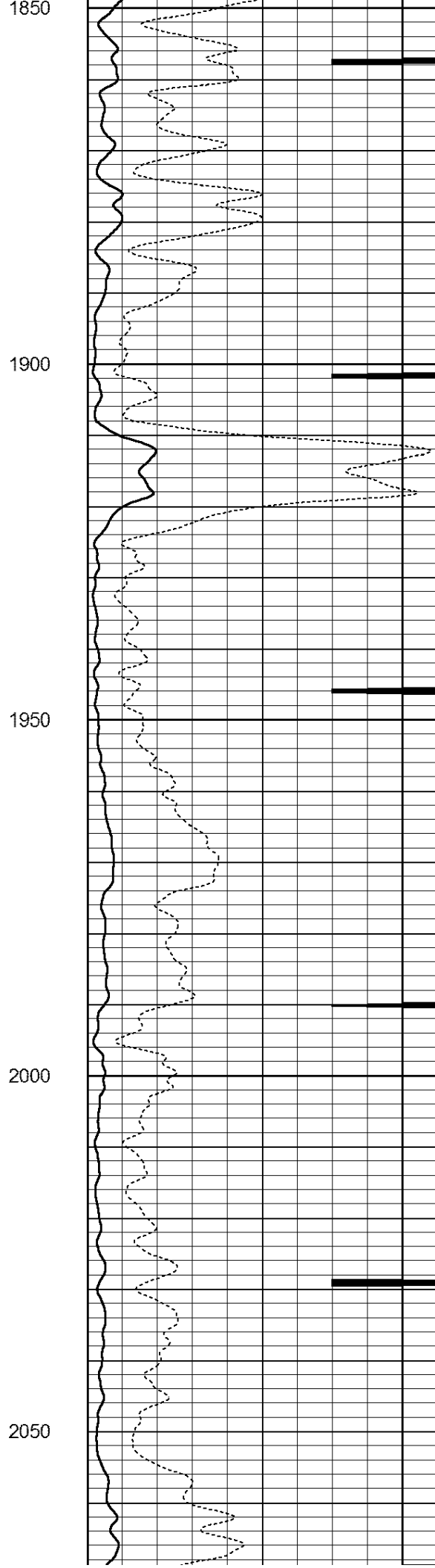
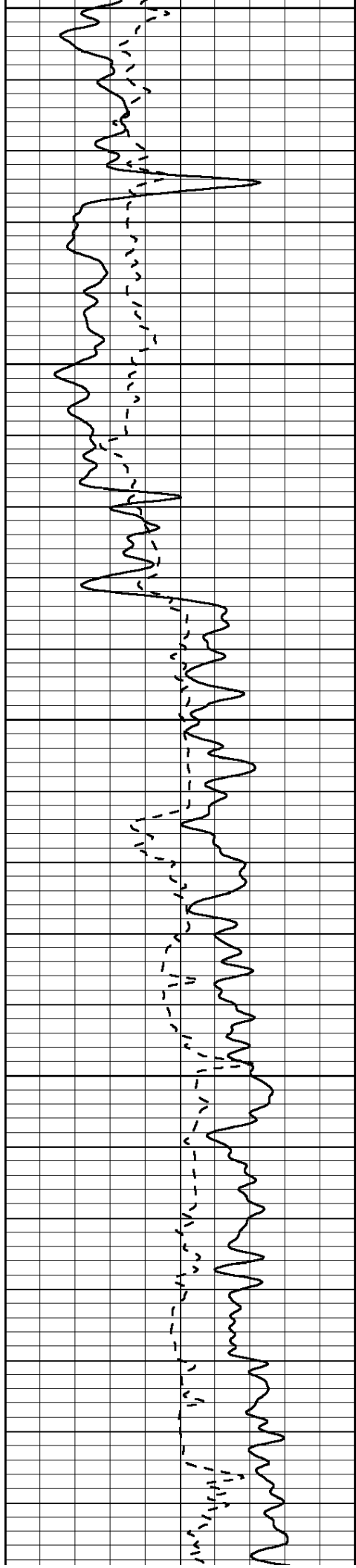
Depth in Feet scaled 1:2.10

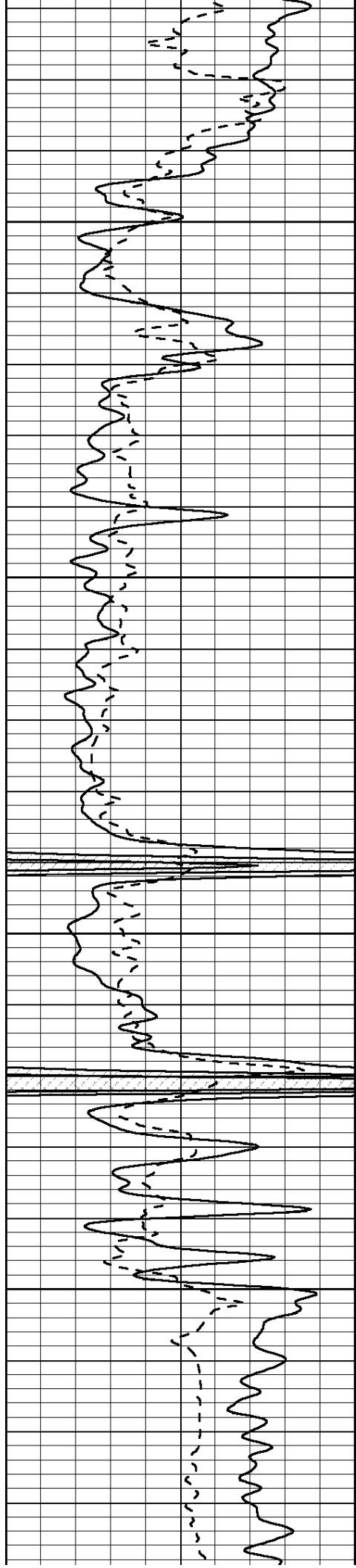
0	Gamma Ray (GAPI)	150
200	5' Travel Time (usec)	1000
-----		

0	3' Amplitude (mV)	100
9	CCL	-1
0	Amplified Amplitude (mV)	20
-----		

200	5FT VDL	1000
-----	---------	------





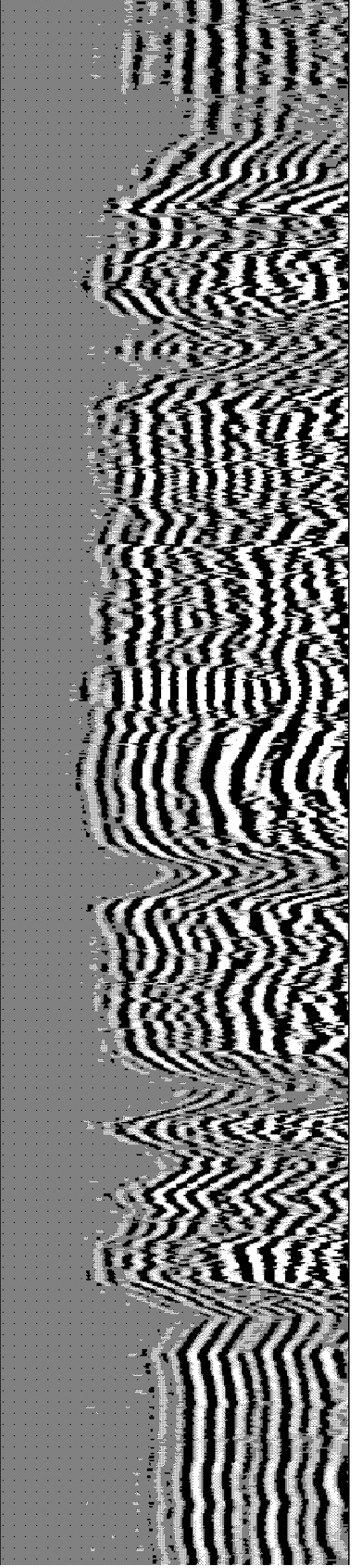
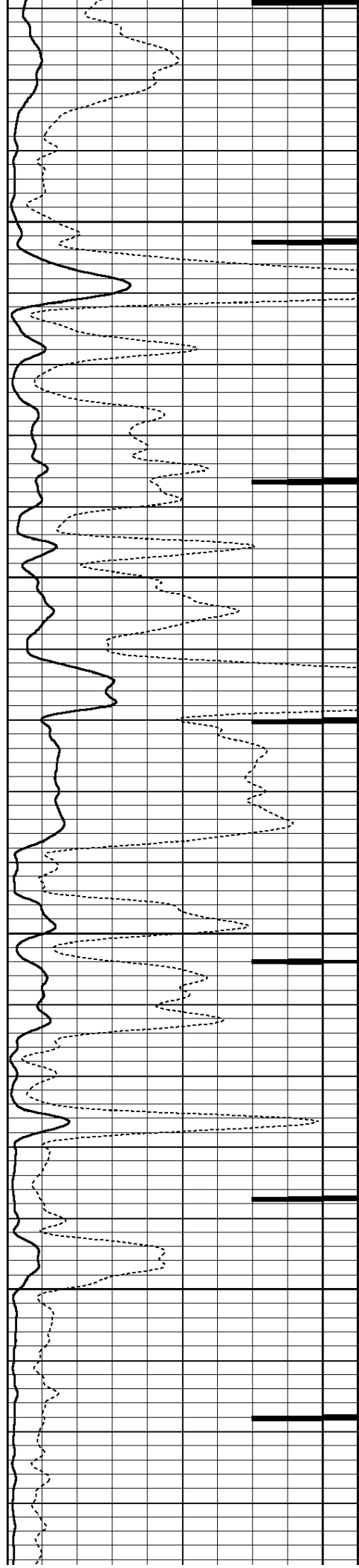


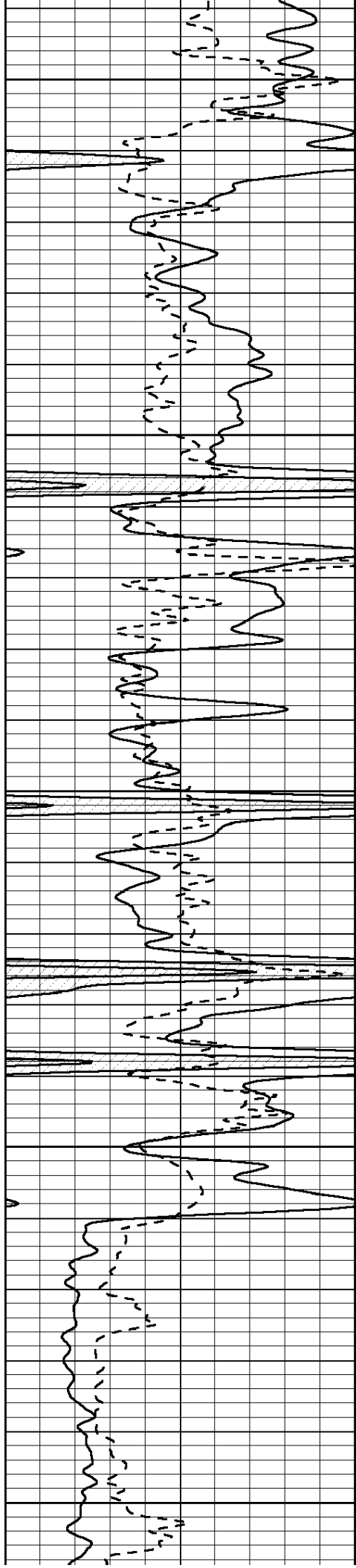
2100

2150

2200

2250





2300

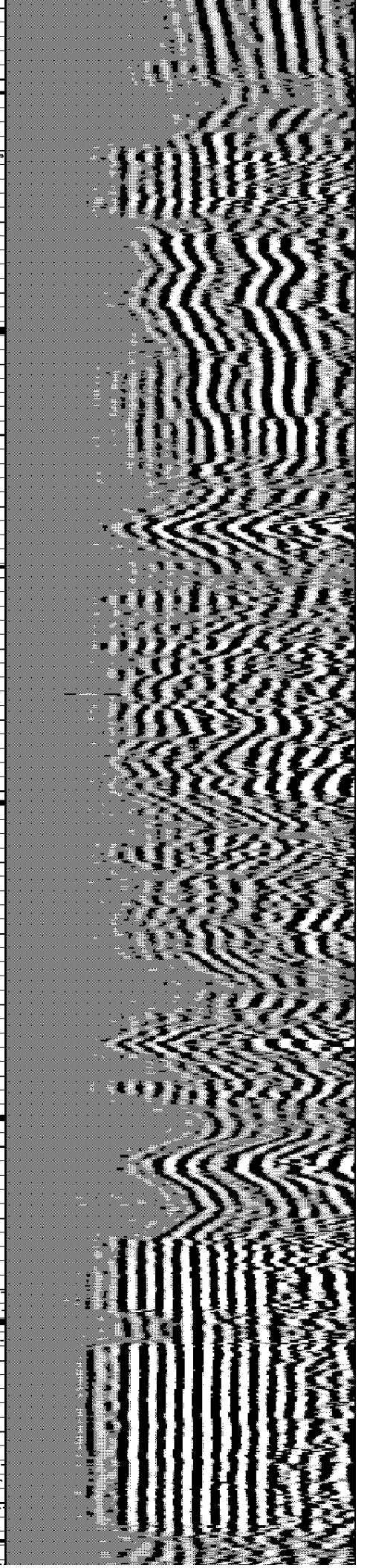
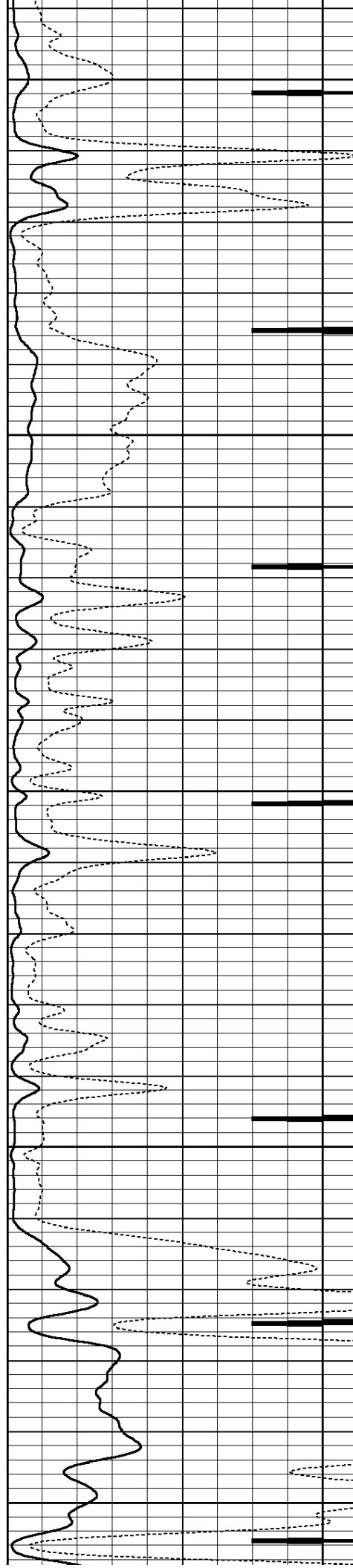
2350

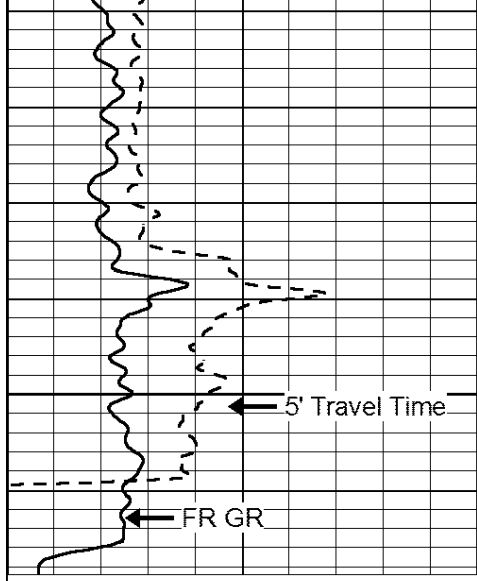
2400

2450

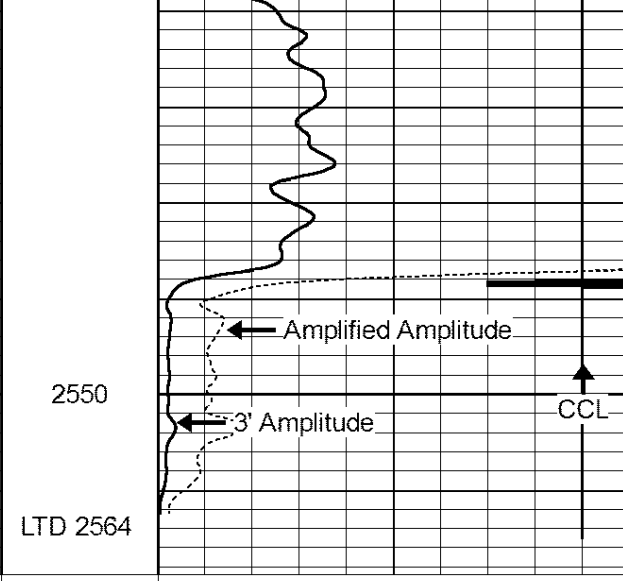
PERF  
2462-88  
2 S.P.F.

2500

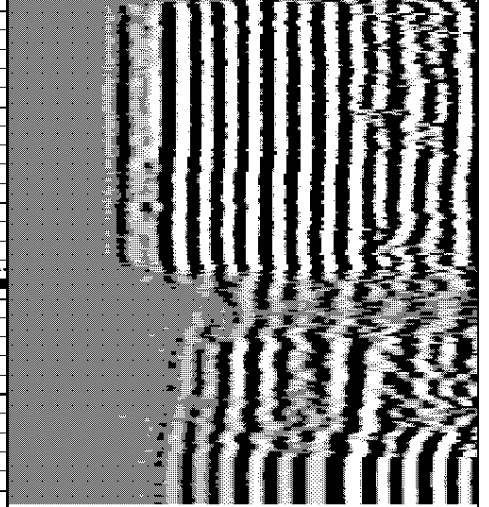




0	Gamma Ray (GAPI)	150
200	5' Travel Time (usec)	1000



0	3' Amplitude (mV)	100
9	CCL	-1
0	Amplified Amplitude (mV)	20



200	5FT VDL	1000
-----	---------	------