



DUAL INDUCTION LOG

Company GORE OIL COMPANY
 Well PRAIRIE HOMESTEAD #1-18
 Field WILDCAT
 County ROOKS State KANSAS

Location: API #: 15-163-24426-0000
 1550' FNL & 1800' FWL
 NE - NW - SE - NW
 Permanent Datum GROUND LEVEL Elevation 2015
 Log Measured From KELLY BUSHING 8' A.G.L.
 Drilling Measured From KELLY BUSHING
 SEC 18 TWP 9S RGE 17W
 Other Services CDL/CNL/PE MEL
 Elevation K.B. 2023 D.F. 2021 G.L. 2015

Date	6/21/21
Run Number	ONE
Depth Driller	3573
Depth Logger	3570
Bottom Logged Interval	3568
Top Log Interval	00
Casing Driller	8 5/8"@267'
Casing Logger	267
Bit Size	7 7/8"
Type Fluid in Hole	CHEMICAL MUD
Density / Viscosity	8.9/52
pH / Fluid Loss	10.5/5.8
Source of Sample	FLOWLINE
Rm @ Meas. Temp	.600@90F
Rmf @ Meas. Temp	.450@90F
Rmc @ Meas. Temp	.720@90F
Source of Rmf / Rmc	MEASUREMENT
Rm @ BHT	.482@112F
Time Circulation Stopped	2 HOURS
Time Logger on Bottom	8:00 P.M.
Maximum Recorded Temperature	112F
Equipment Number	922339
Location	HAYS, KANSAS
Recorded By	JEFF LUEBBERS
Witnessed By	CHUCK SCHMALTZ

<<< Fold Here >>>

All interpretations are opinions based on inferences from electrical or other measurements and we cannot and do not guarantee the accuracy or correctness of any interpretation, and we shall not, except in the case of gross or willful negligence on our part, be liable or responsible for any loss, costs, damages, or expenses incurred or sustained by anyone resulting from any interpretation made by any of our officers, agents or employees. These interpretations are also subject to our general terms and conditions set out in our current Price Schedule.

15-163-24426-0000 Comments

THANK YOU FOR USING ELI WIRELINE HAYS, KANSAS (785) 628-6395
 DIRECTIONS
 PLAINVILLE, KS. (4 WAY STOP) 3N. ON HWY 183, TO "U RD.", 1 1/2 E., S. INTO

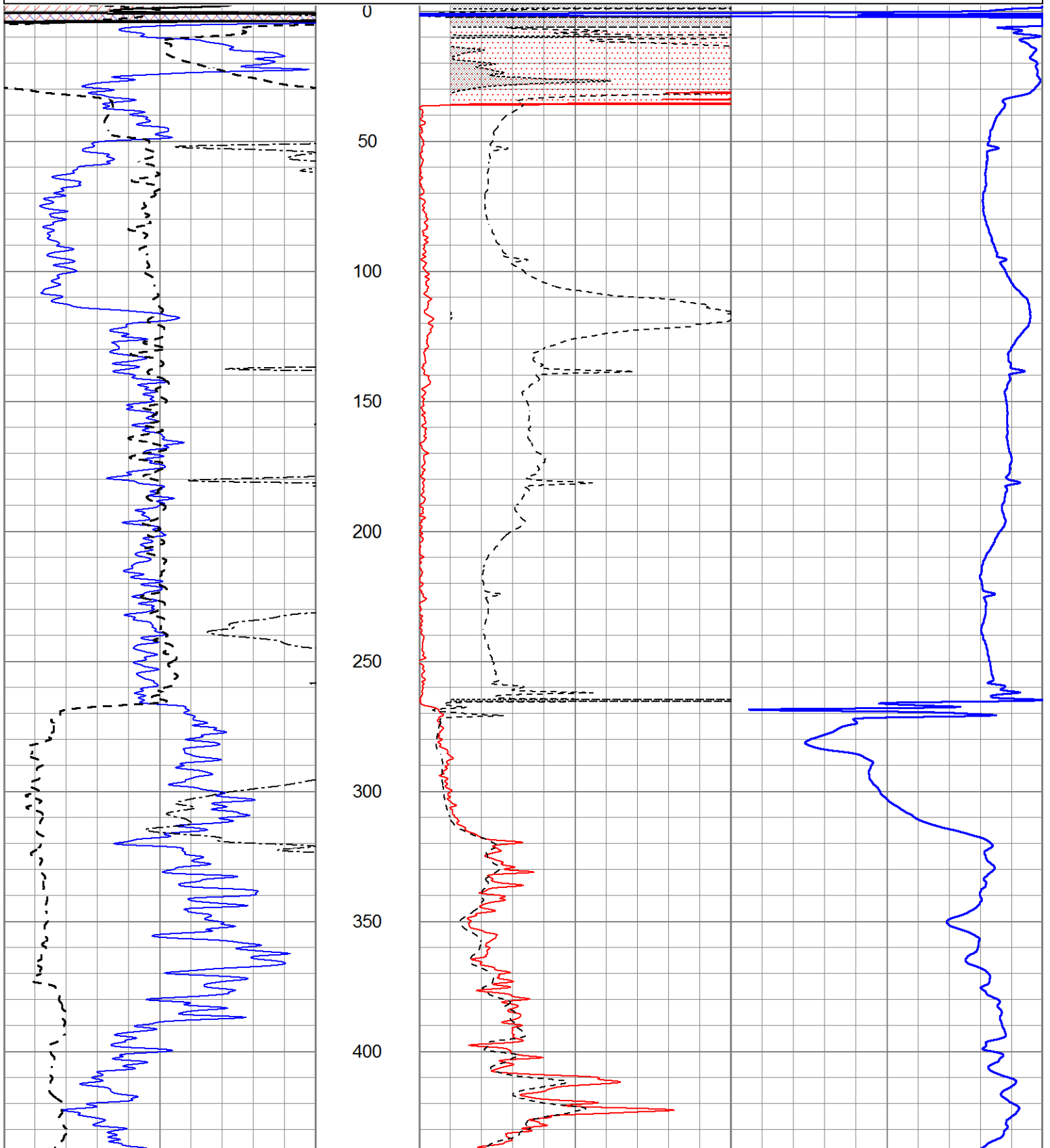


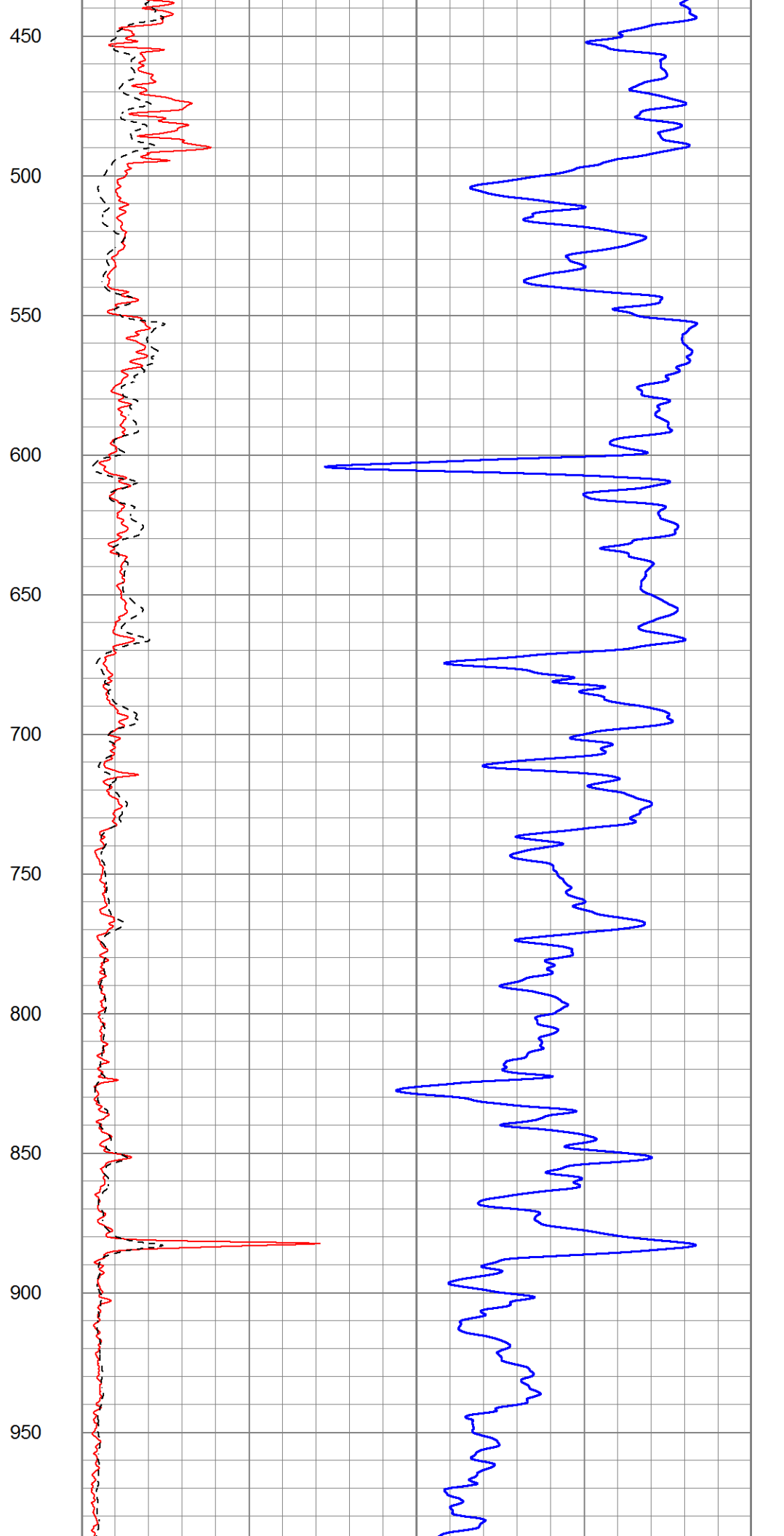
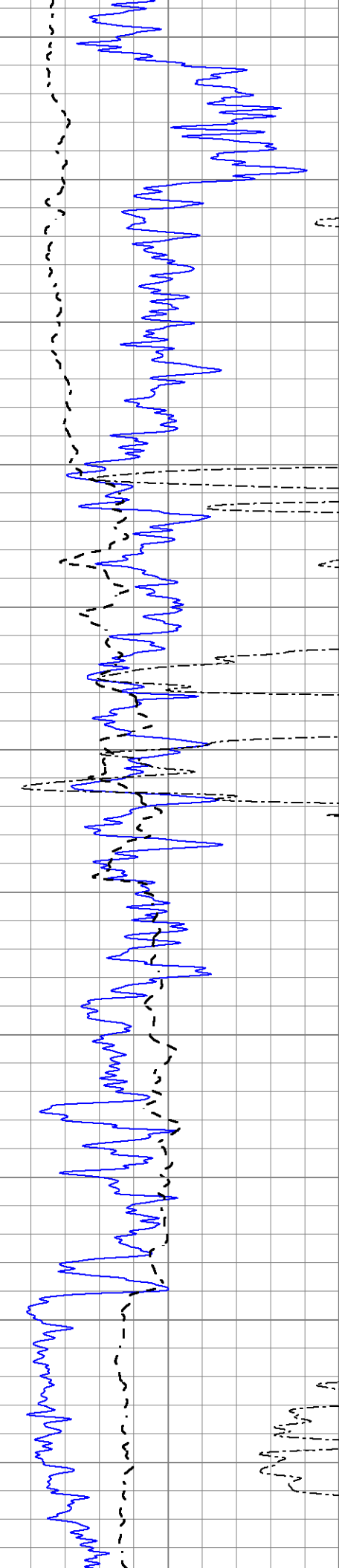
MAIN SECTION

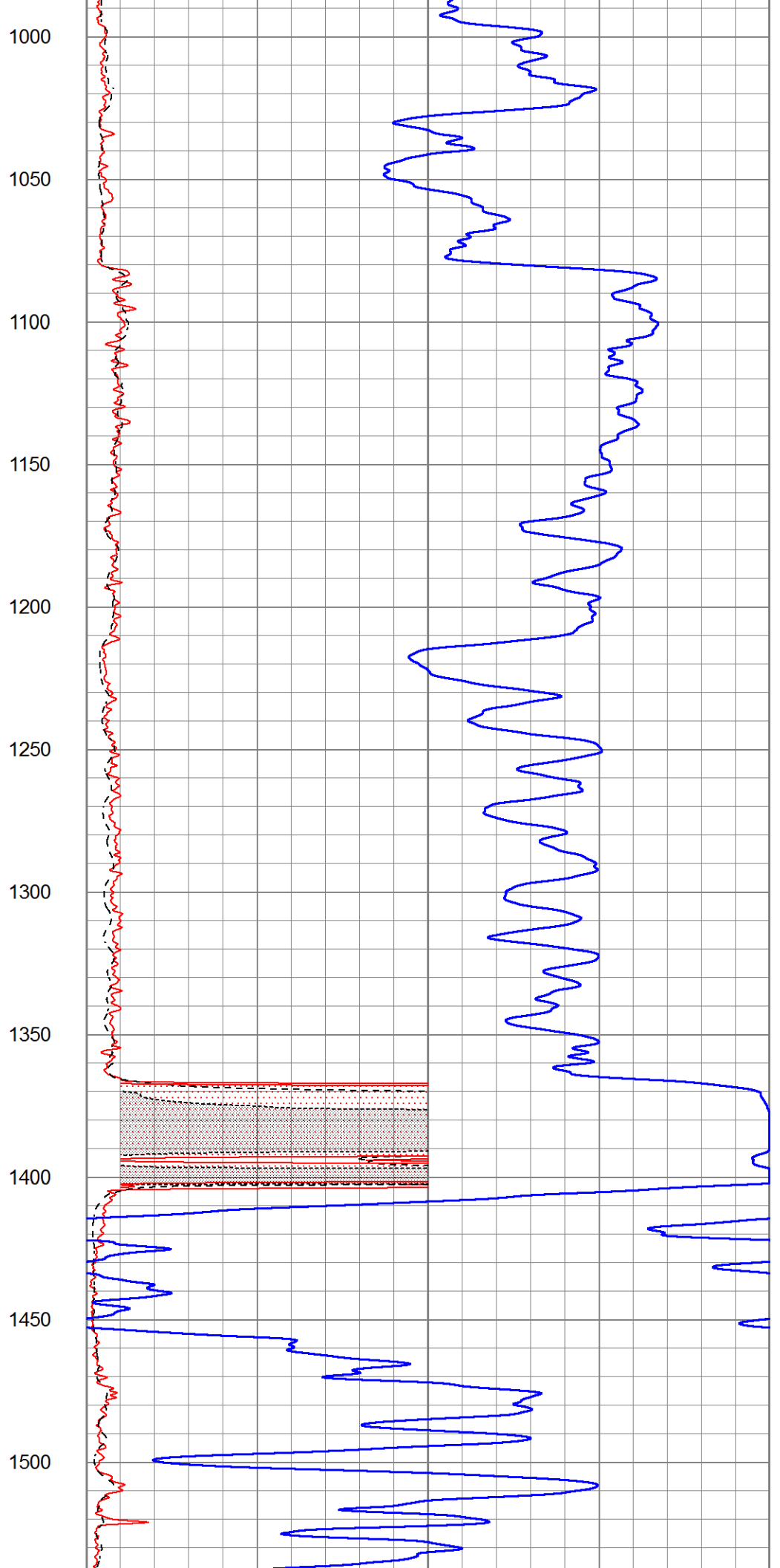
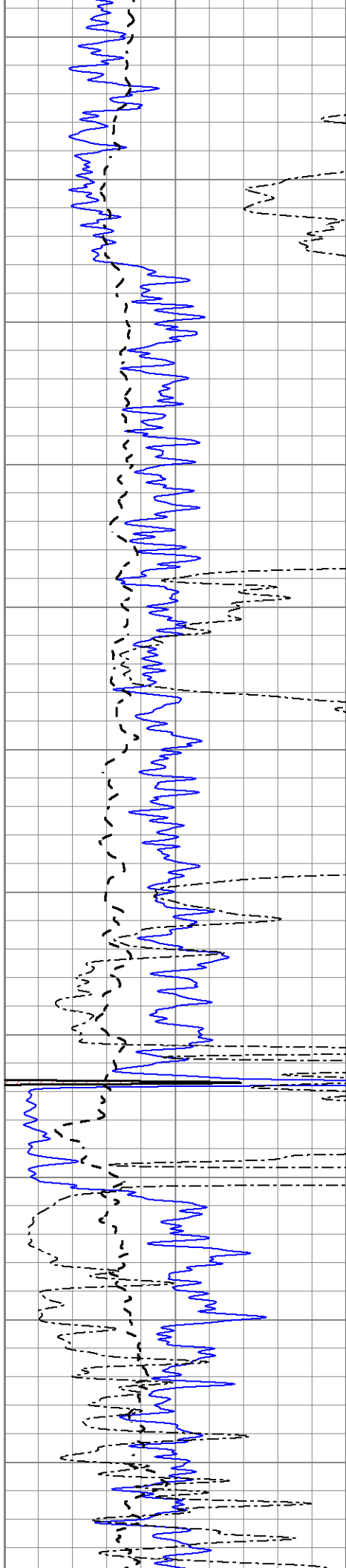
Database File 5578ddn.db
 Dataset Pathname pass3.4M
 Presentation Format dil2
 Dataset Creation Mon Jun 21 21:50:45 2021
 Charted by Depth in Feet scaled 1:600

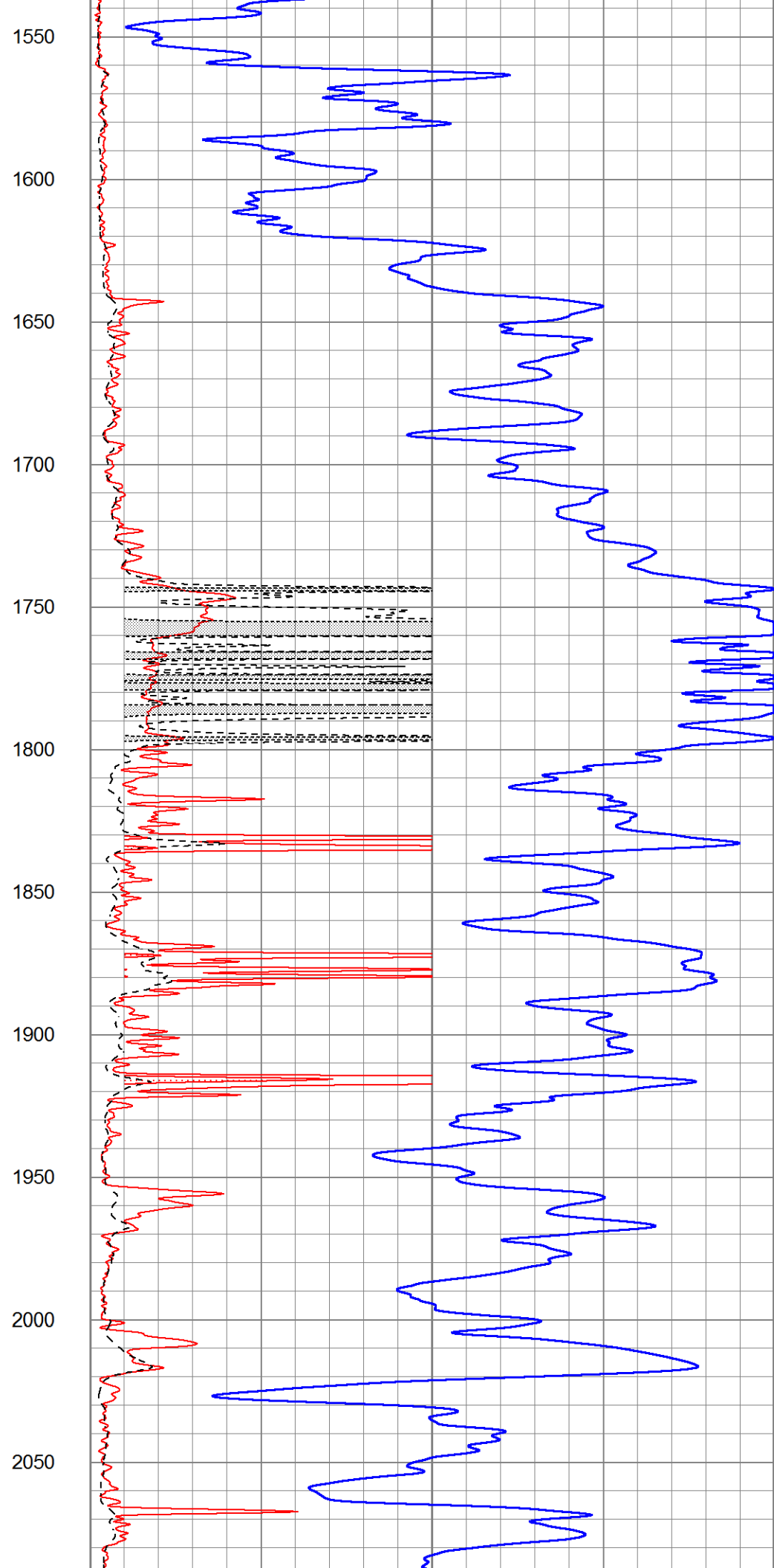
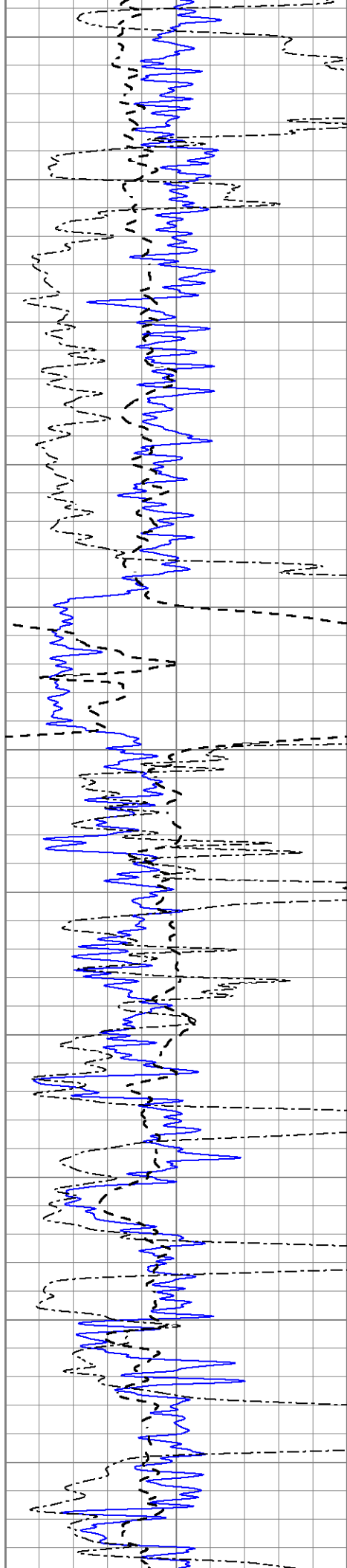
0	Gamma Ray (GAPI)	150
-100	SP (mV)	100
0	RWA (Ohm-m)	1

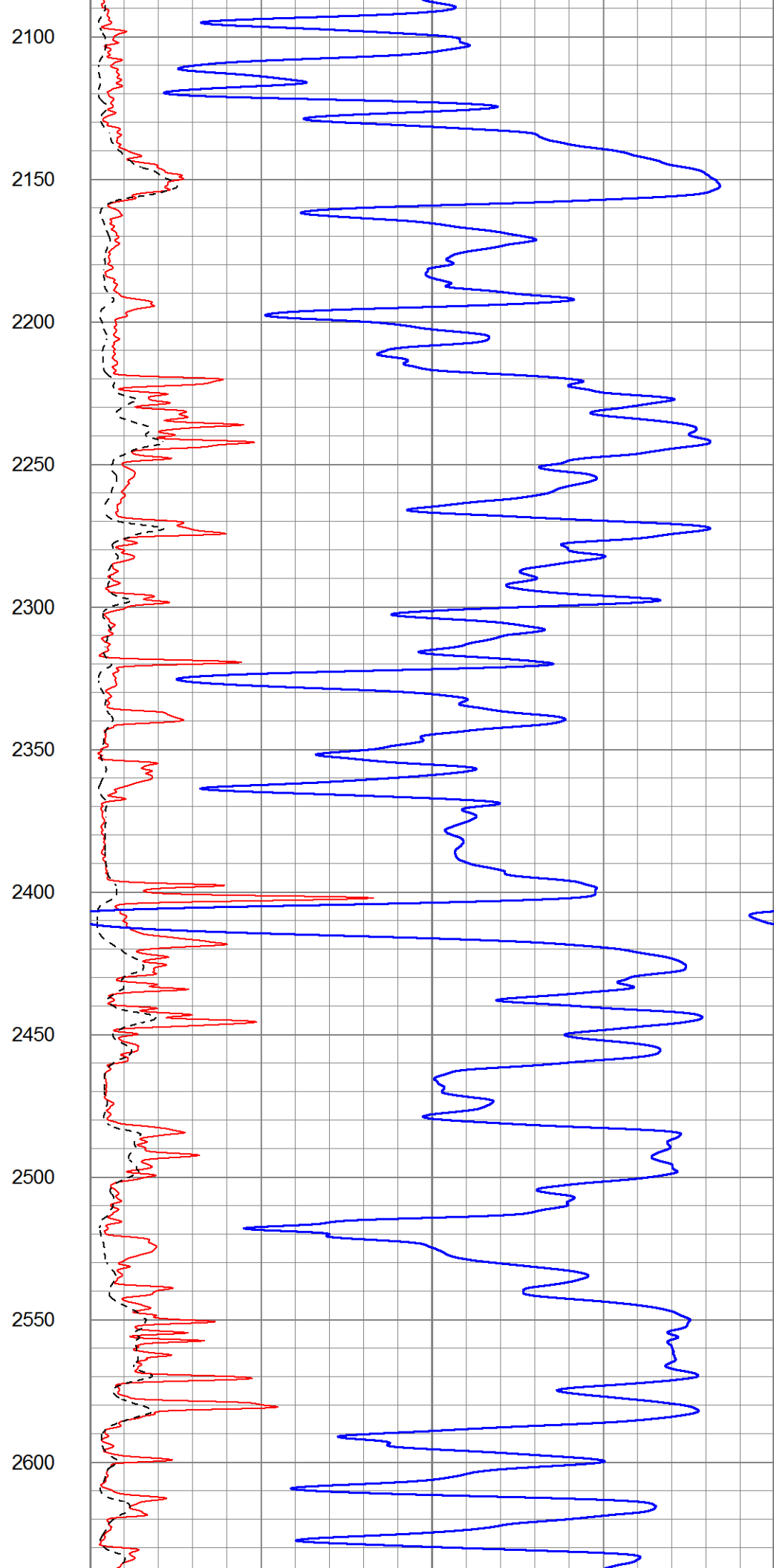
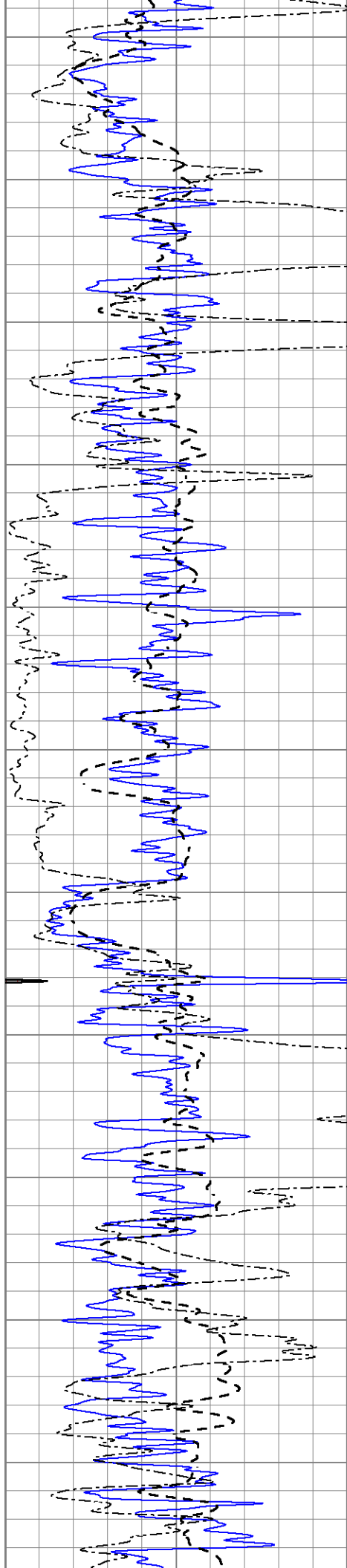
1000	CILD (mmho/m)	0
0	RLL3 (Ohm-m)	50
0	RILD (Ohm-m)	50
50	RILD X10 (Ohm-m)	500
50	RLL3 X10 (Ohm-m)	500

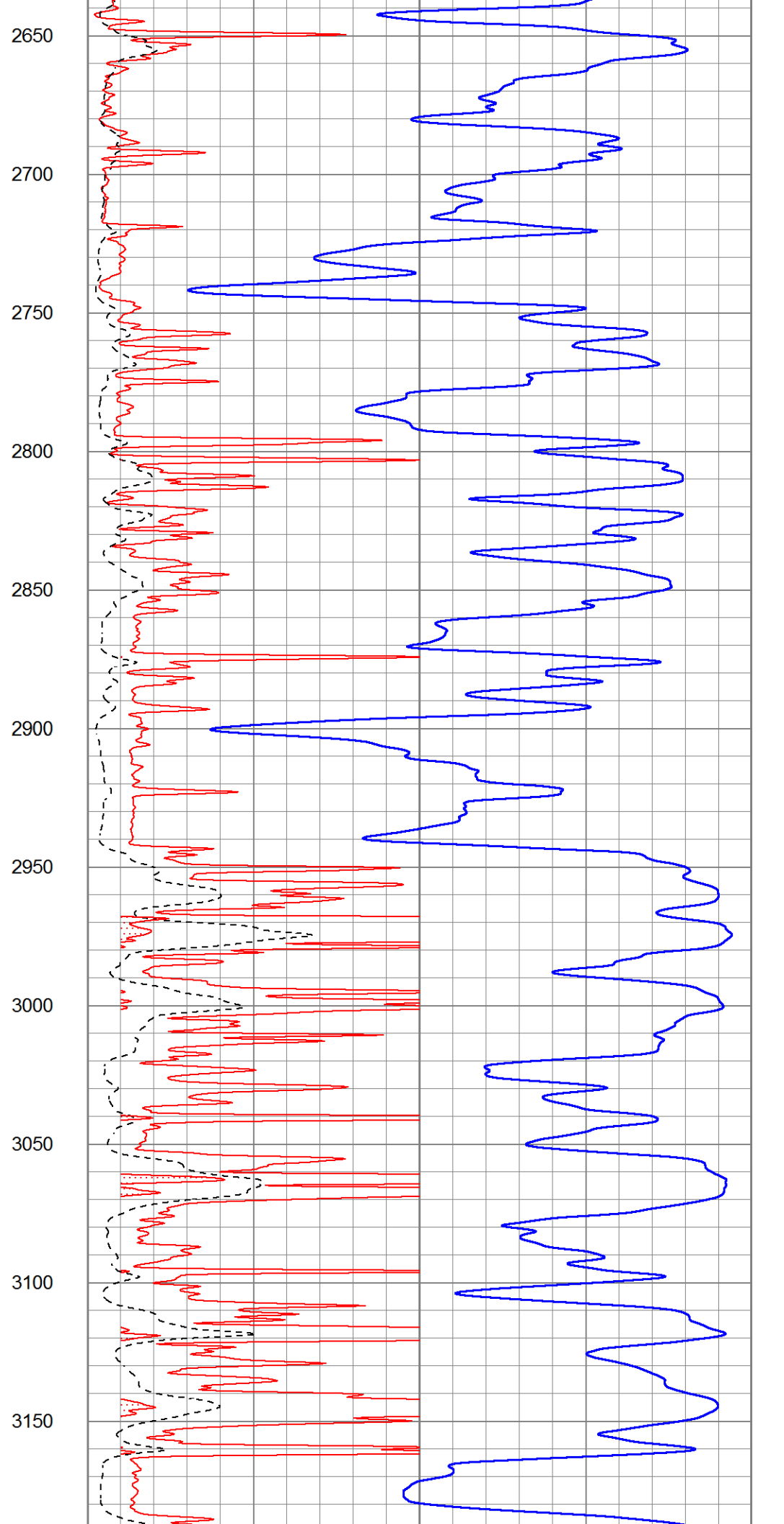
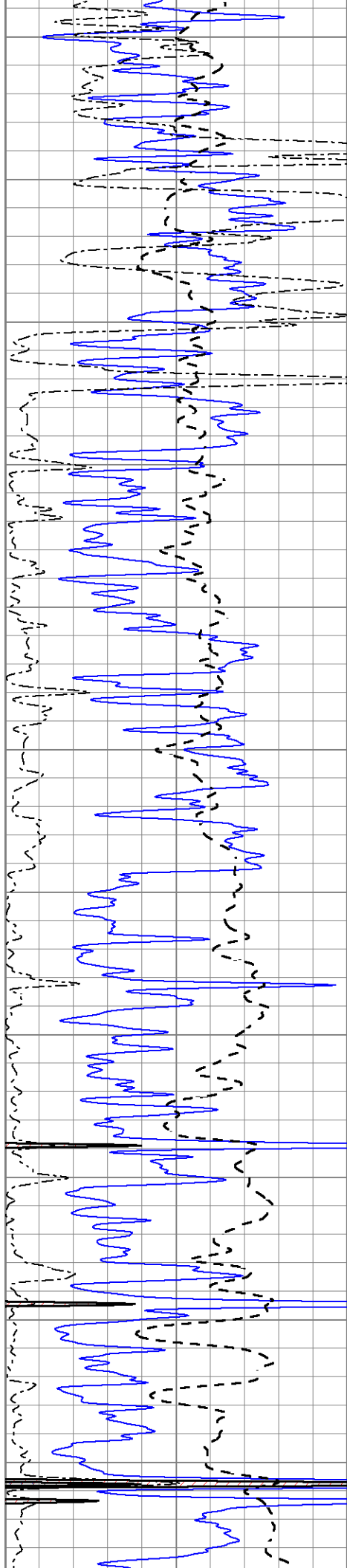


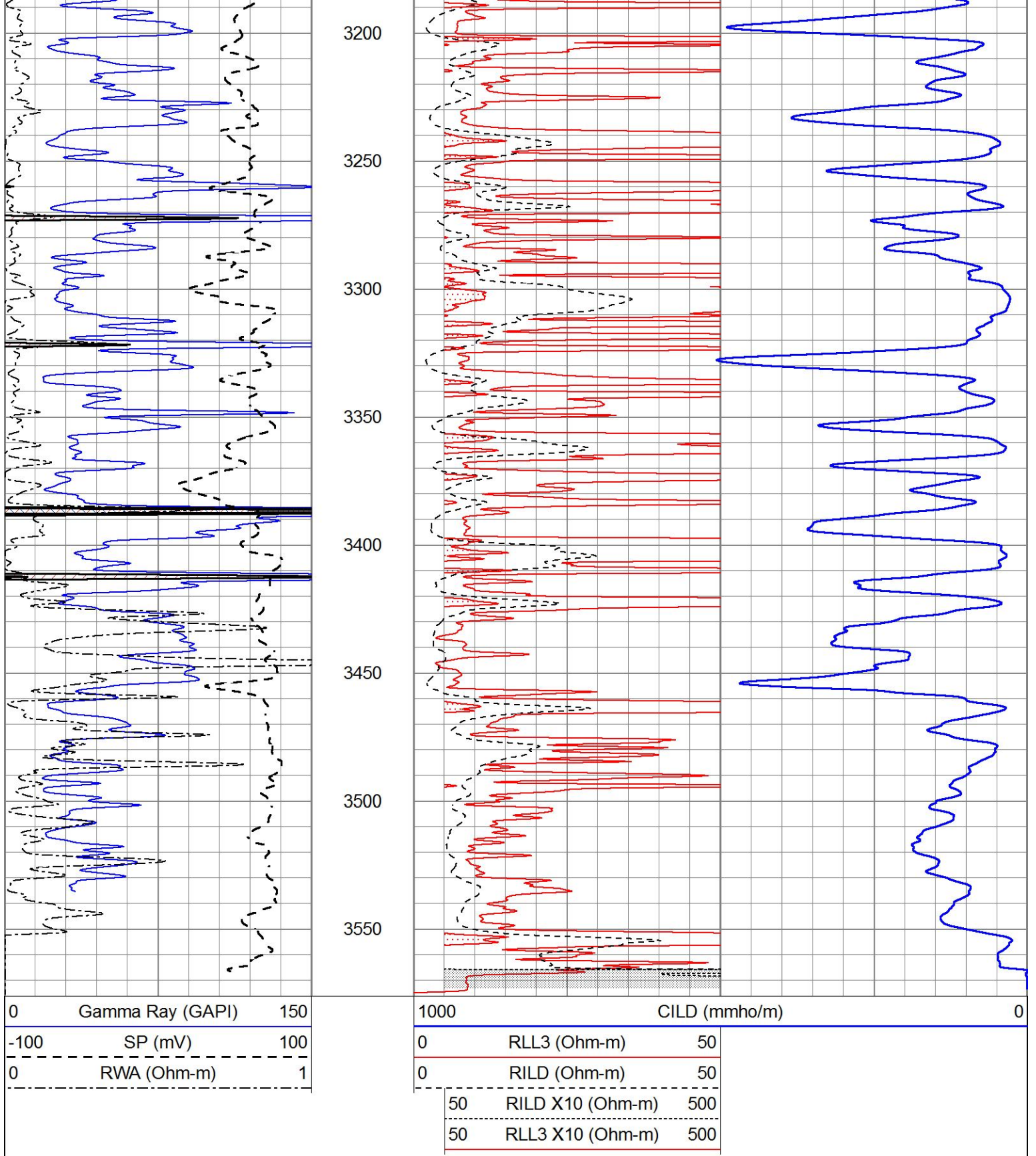










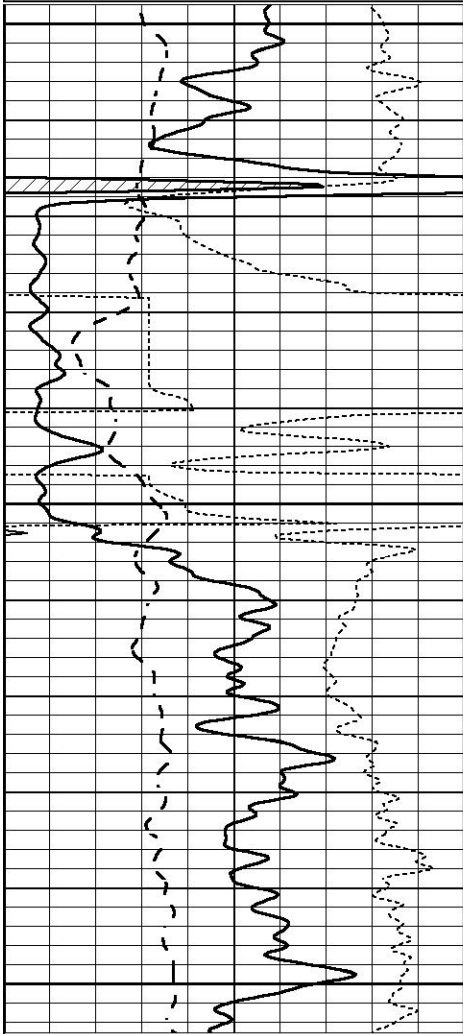


ANHYDRITE

Database File 5578ddn.db
 Dataset Pathname pass3.3A
 Presentation Format _dil
 Dataset Creation Mon Jun 21 21:24:12 2021

0	GAMMA RAY (GAPI)	150
-100	SP (mV)	100
-250	Rxo/Rt	50
0	MINMK	20

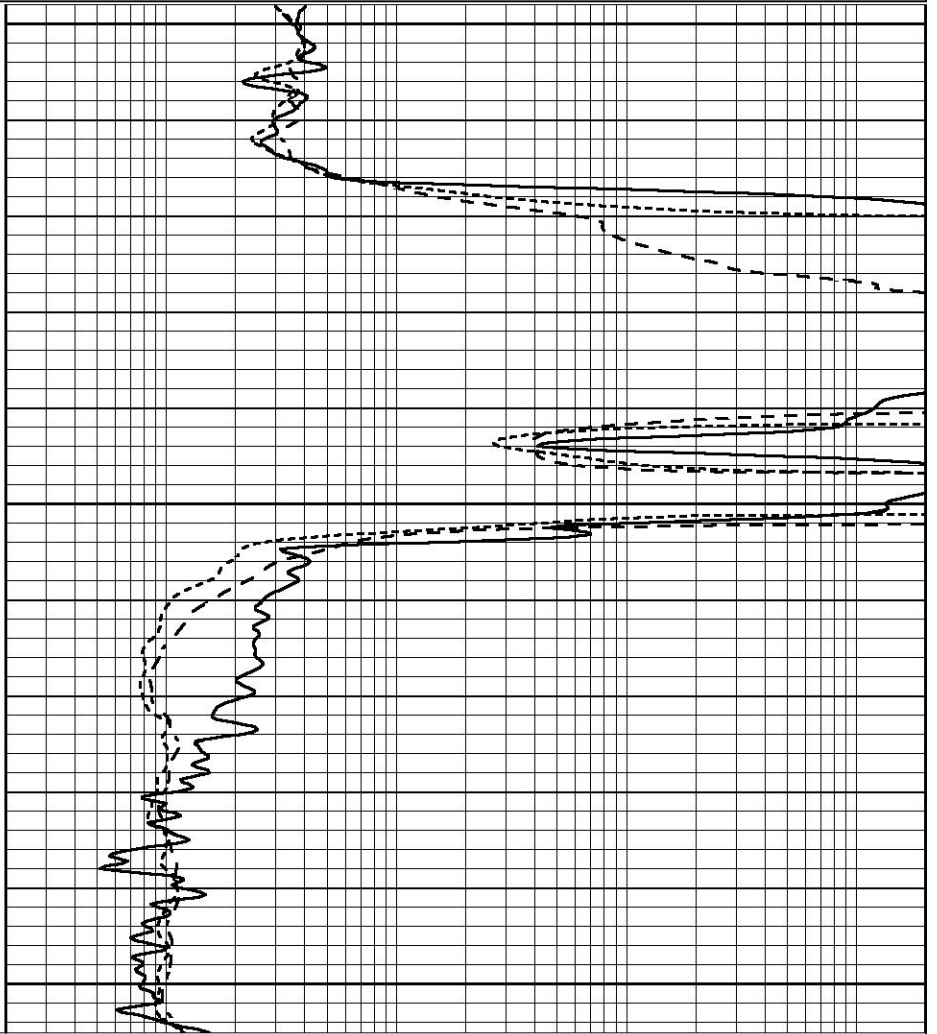
0.2	SHALLOW GUARD (Ohm-m)	2000
0.2	DEEP INDUCTION (Ohm-m)	2000
0.2	MEDIUM INDUCTION (Ohm-m)	2000



1350

1400

1450



0	GAMMA RAY (GAPI)	150
-100	SP (mV)	100
-250	Rxo/Rt	50
0	MINMK	20

0.2	SHALLOW GUARD (Ohm-m)	2000
0.2	DEEP INDUCTION (Ohm-m)	2000
0.2	MEDIUM INDUCTION (Ohm-m)	2000

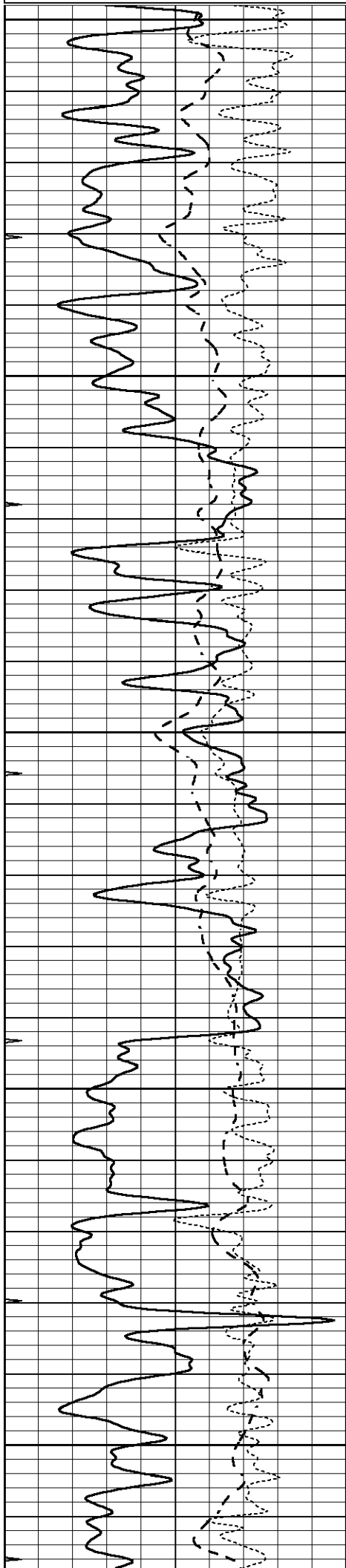


MAIN SECTION

Database File 5578ddn.db
 Dataset Pathname pass3.4M
 Presentation Format _dil
 Dataset Creation Mon Jun 21 21:50:45 2021
 Charted by Depth in Feet scaled 1:240

0	GAMMA RAY (GAPI)	150
-100	SP (mV)	100
-250	Rxo/Rt	50
0	MINMK	20

0.2	SHALLOW GUARD (Ohm-m)	2000
0.2	DEEP INDUCTION (Ohm-m)	2000
0.2	MEDIUM INDUCTION (Ohm-m)	2000



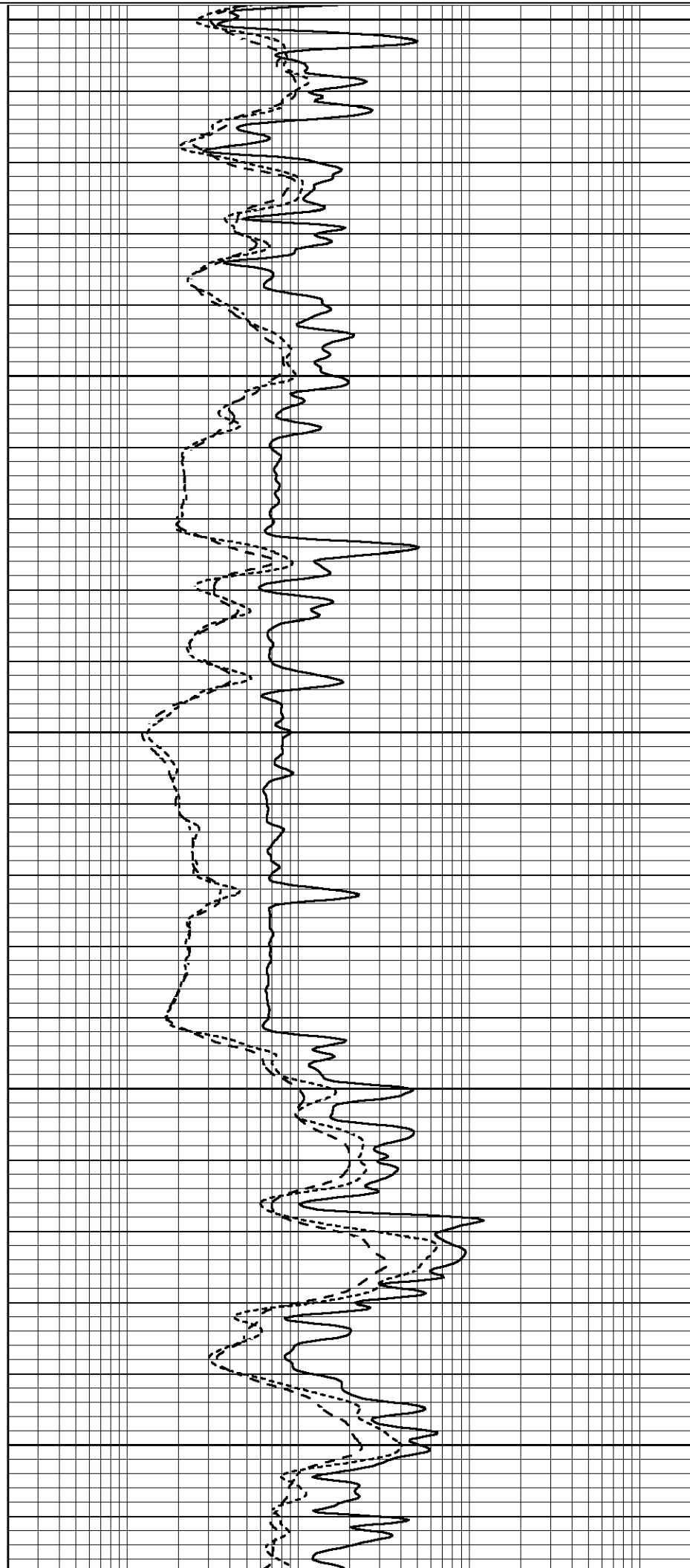
2800

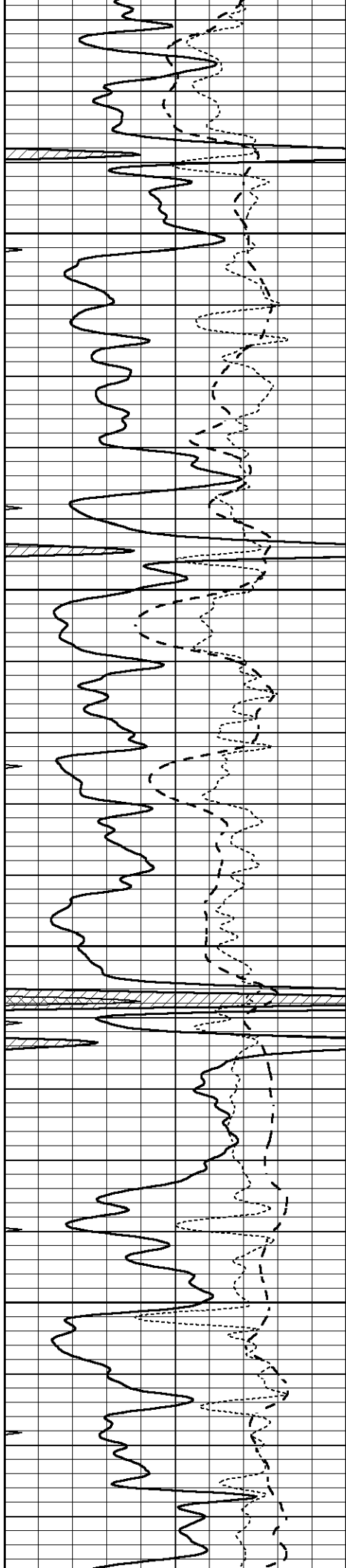
2850

2900

2950

3000



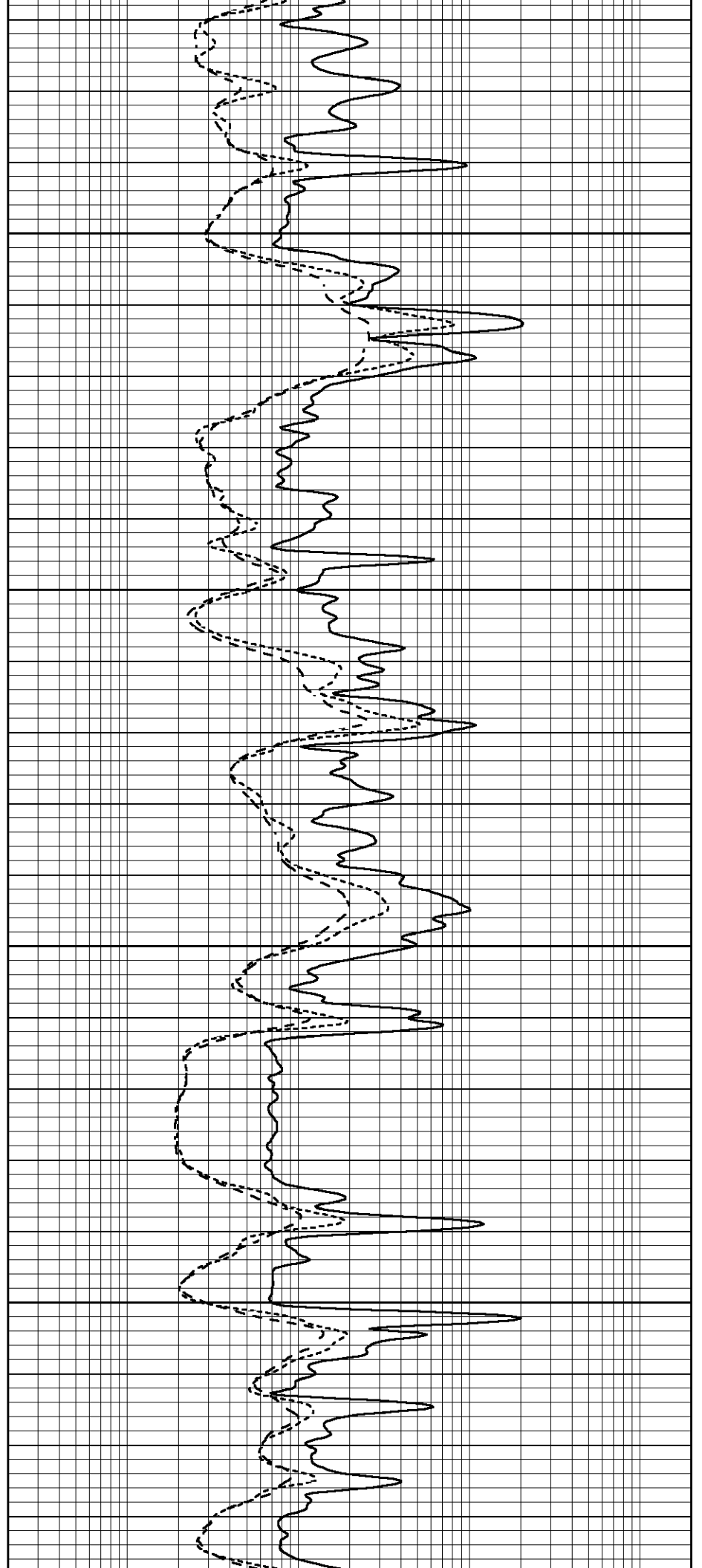


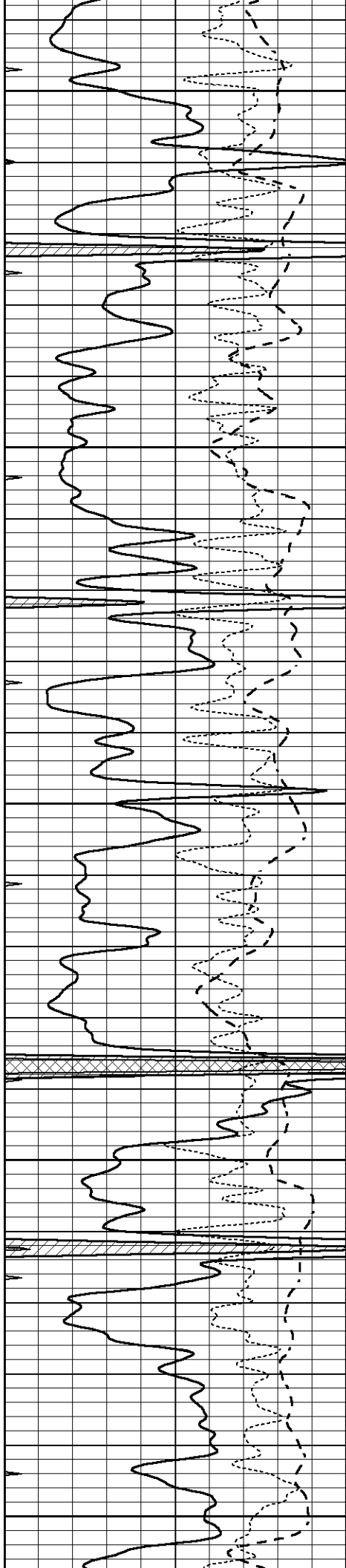
3050

3100

3150

3200





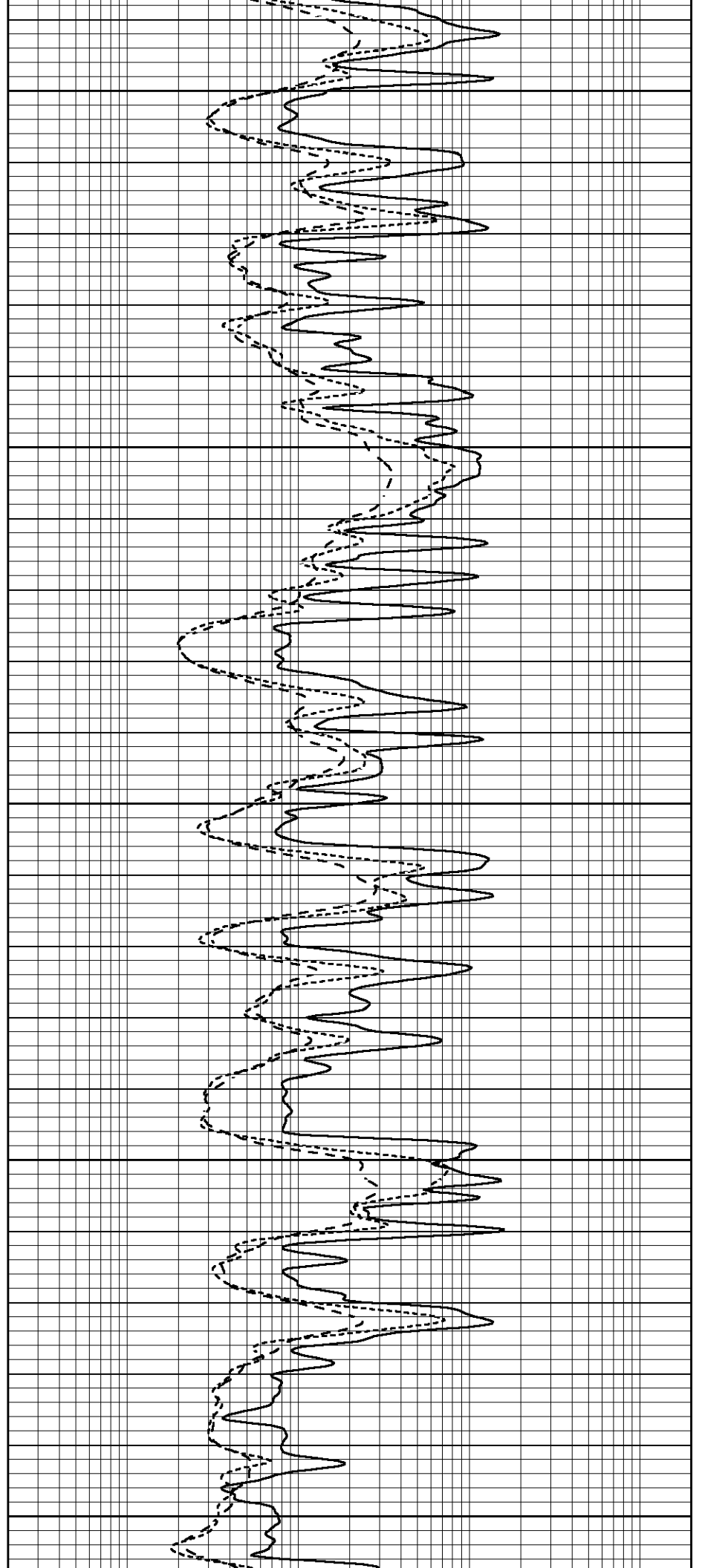
3250

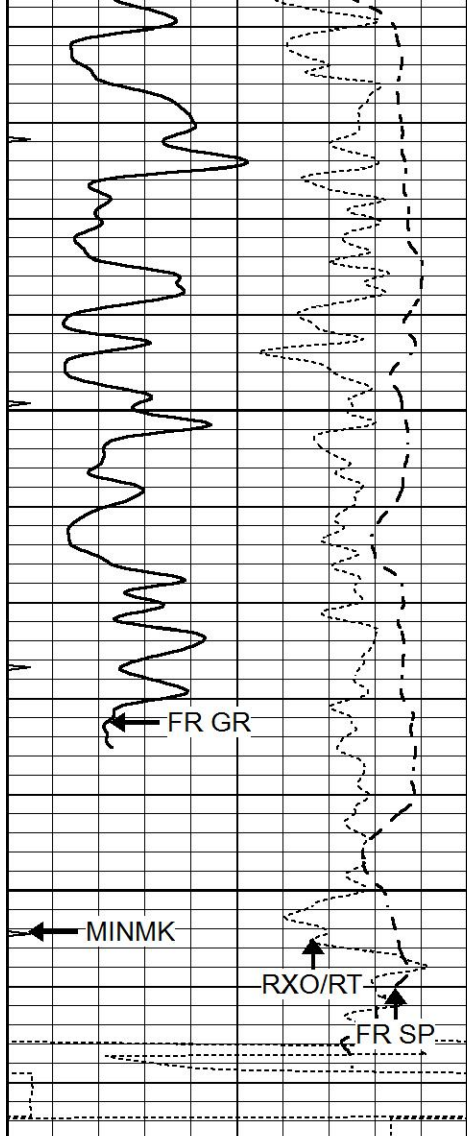
3300

3350

3400

3450

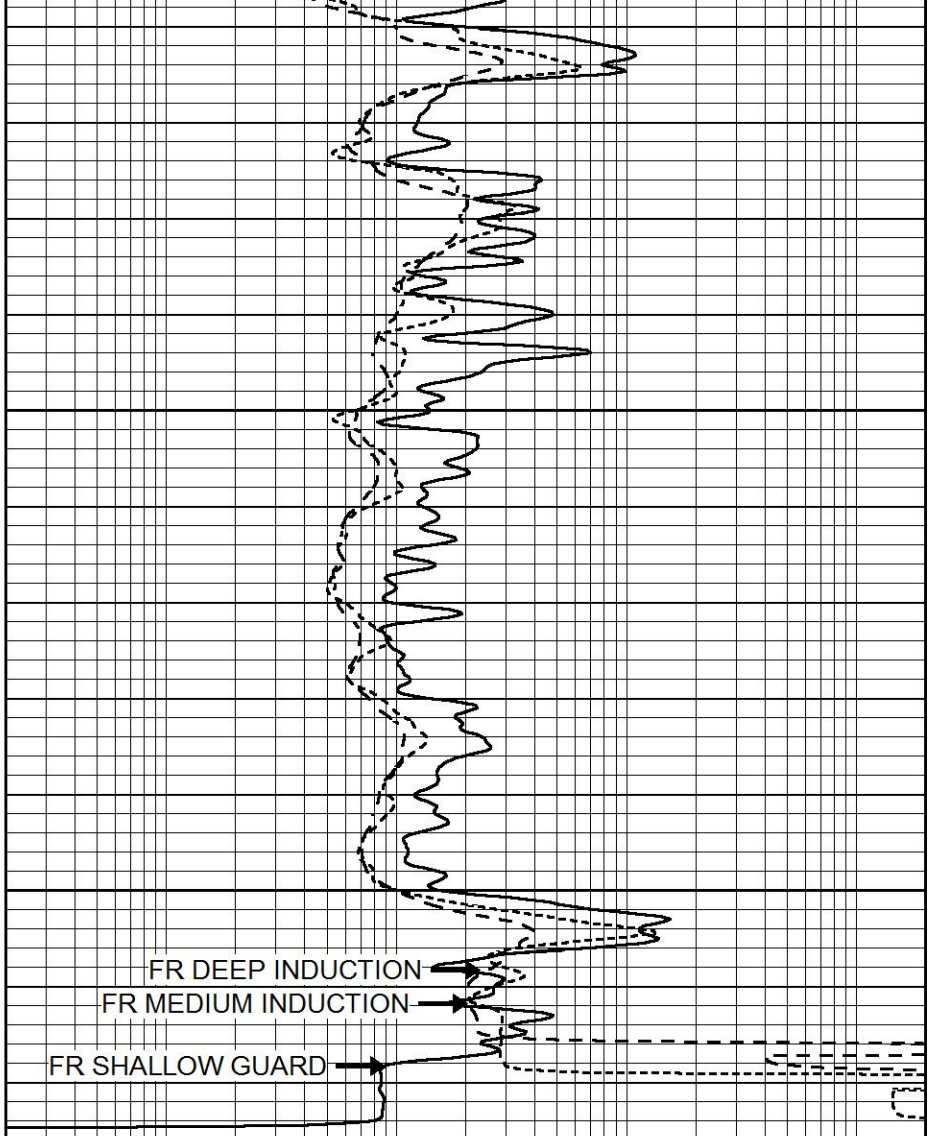




0	GAMMA RAY (GAPI)	150
-100	SP (mV)	100
-250	Rxo/Rt	50
0	MINMK	20

3500

3550



0.2	SHALLOW GUARD (Ohm-m)	2000
0.2	DEEP INDUCTION (Ohm-m)	2000
0.2	MEDIUM INDUCTION (Ohm-m)	2000

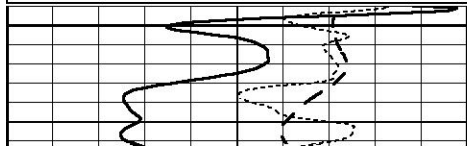


REPEAT SECTION

Database File 5578ddn.db
 Dataset Pathname pass2.1R
 Presentation Format _dil
 Dataset Creation Mon Jun 21 20:31:23 2021
 Charted by Depth in Feet scaled 1:240

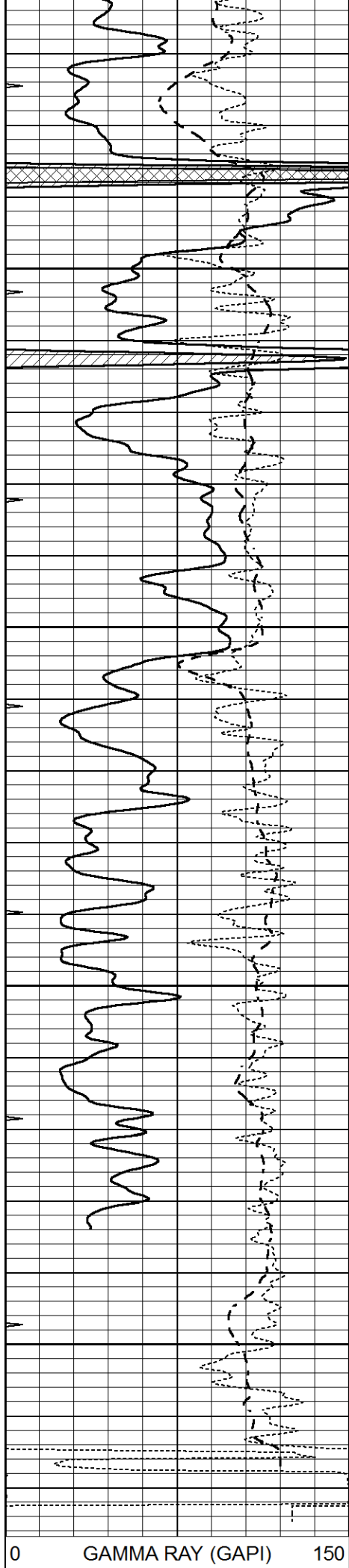
0	GAMMA RAY (GAPI)	150
-100	SP (mV)	100
-250	Rxo/Rt	50
0	MINMK	20

0.2	SHALLOW GUARD (Ohm-m)	2000
0.2	DEEP INDUCTION (Ohm-m)	2000
0.2	MEDIUM INDUCTION (Ohm-m)	2000



3350





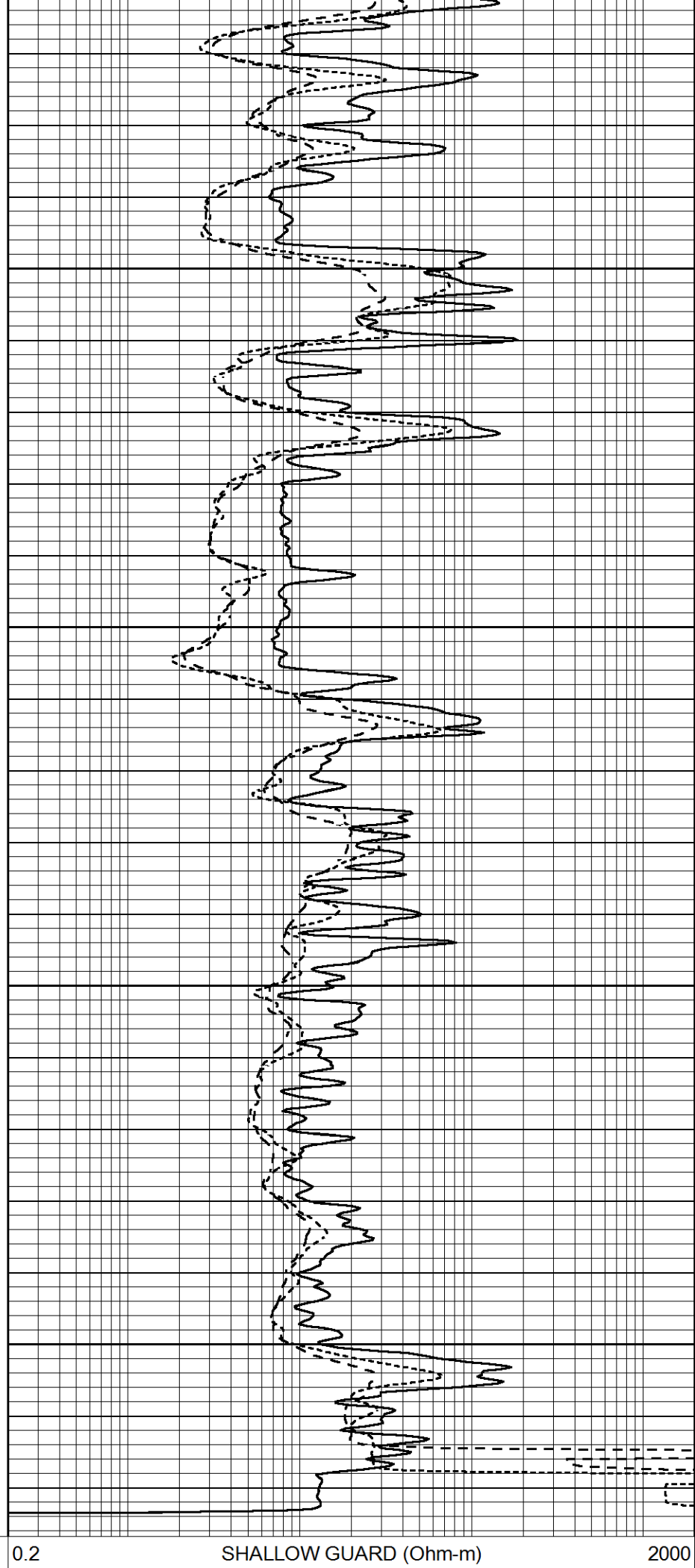
3400

3450

3500

3550

0 GAMMA RAY (GAPI) 150



0.2 SHALLOW GUARD (Ohm-m) 2000

-100	SP (mV)	100
-250	Rxo/Rt	50
0	MINMK	20

0.2	DEEP INDUCTION (Ohm-m)	2000
0.2	MEDIUM INDUCTION (Ohm-m)	2000

Calibration Report

Database File 5578ddn.db
 Dataset Pathname pass3.4M
 Dataset Creation Mon Jun 21 21:50:45 2021

Dual Induction Calibration Report

Serial-Model: DIL4-GEAR
 Surface Cal Performed: Mon Jun 21 19:54:04 2021
 Downhole Cal Performed: Tue Sep 25 17:01:29 2001
 After Survey Verification Performed: Sat Jun 11 16:07:12 2005

Surface Calibration

Loop:	Readings			References			Results	
	Air	Loop		Air	Loop		m	b
Deep	0.008	0.666	V	0.000	400.000	mmho/m	570.000	-10.000
Medium	-0.003	0.769	V	0.000	462.500	mmho/m	560.000	-20.000
Internal:	Zero	Cal		Zero	Cal		m	b
Deep	0.013	0.651	V	0.000	400.000	mmho/m	627.541	-8.365
Medium	0.020	0.754	V	0.000	462.500	mmho/m	630.311	-12.549

Downhole Calibration

Internal:	Readings			References			Results	
	Zero	Cal		Zero	Cal		m	b
Deep	0.000	1.000	mmho/m	0.000	1.000	mmho/m	1.000	0.000
Medium	0.000	1.000	mmho/m	0.000	1.000	mmho/m	1.000	0.000
Shallow	2.525	0.026	V	500.000	2.000	Ohm-m	250.000	-4.000

After Survey Verification

Internal:	Readings			Targets			Results	
	Zero	Cal		Zero	Cal		m'	b'
Deep	0.000	1.000	mmho/m	0.000	1.000	mmho/m	1.000	0.000
Medium	0.000	1.000	mmho/m	0.000	1.000	mmho/m	1.000	0.000
Shallow	0.000	0.000	Ohm-m	500.000	2.000	Ohm-m	1.000	0.000

Litho Density Calibration Report

Serial: 004 Model: PRB

Master Calibration

Performed Tue May 18 11:02:48 2021

	Background	Magnesium	Aluminum	Aluminum+Fe	
Window 1	1187.1	10004.0	3142.5	2810.8	cps
Window 2	1084.9	8556.6	2749.3	2502.4	cps
Window 3	923.1	5129.8	1819.8	1719.3	cps
Window 4	263.5	263.6	259.7	262.8	cps
Long Space	0.0	7471.7	1664.4	1417.5	cps
Short Space	1.5	984.9	645.6	561.2	cps
Rho		1.7100	2.5900	0.0000	g/cc
Pe		2.0000	2.7500	5.7900	

Rib Angle	: 44.3	Rib Slope	: 0.976	Density/Spine Ratio	: 0.564
Spine Angle	: 74.3	Spine Slope	: 3.555	Spine Intercept	: -15.6

Before Survey Verification

Performed Wed Dec 31 18:00:00 1969

Window 1	0.0	0.0	0.0	0.0	cps
Window 2	0.0	0.0	0.0	0.0	cps
Window 3	0.0	0.0	0.0	0.0	cps
Window 4	0.0	0.0	0.0	0.0	cps
Long Space	0.0	0.0	0.0	0.0	cps
Short Space	0.0	0.0	0.0	0.0	cps
Measured Rho		0.0000	0.0000	0.0000	g/cc
Measured Correction		0.0000	0.0000	0.0000	g/cc
Measured Pe			0.0000	0.0000	

After Survey Verification

Performed Wed Dec 31 18:00:00 1969

Window 1	0.0	0.0	0.0	0.0	cps
Window 2	0.0	0.0	0.0	0.0	cps
Window 3	0.0	0.0	0.0	0.0	cps
Window 4	0.0	0.0	0.0	0.0	cps
Long Space	0.0	0.0	0.0	0.0	cps
Short Space	0.0	0.0	0.0	0.0	cps
Measured Rho		0.0000	0.0000	0.0000	g/cc
Measured Correction		0.0000	0.0000	0.0000	g/cc
Measured Pe			0.0000	0.0000	

Compensated Neutron Calibration Report

Serial Number: 070808PMC
 Tool Model: NABORS

PRE-SURVEY VERIFICATION

Detector	Readings	Measured	Target
Short Space	cps		
Long Space	cps	pu	pu

POST-SURVEY VERIFICATION

Detector	Readings	Measured	Target
Short Space	cps		
Long Space	cps	pu	pu

Gamma Ray Calibration Report

Serial Number: 070558
 Tool Model: OPEN_GR
 Performed: Fri Apr 16 13:57:16 2021

Calibrator Value: 1.0 GAPI

Background Reading: 0.0 cps
 Calibrator Reading: 1.0 cps

Sensitivity: 0.3000 GAPI/cps